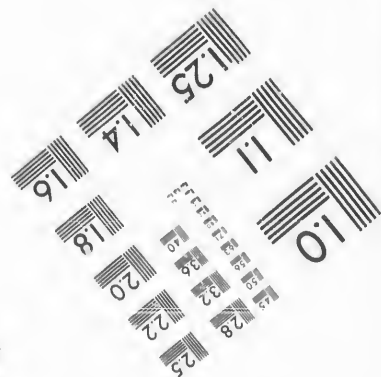
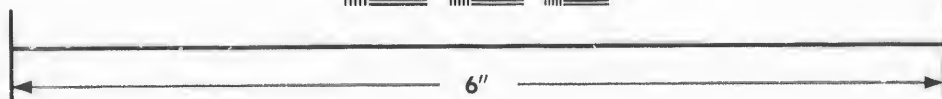
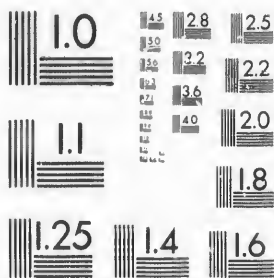


**IMAGE EVALUATION
TEST TARGET (MT-3)**



**Photographic
Sciences
Corporation**

23 WEST MAIN STREET
WEBSTER, N.Y. 14580
(716) 872-4503

**CIHM/ICMH
Microfiche
Series.**

**CIHM/ICMH
Collection de
microfiches.**



Canadian Institute for Historical Microreproductions / Institut canadien de microreproductions historiques

© 1987

Technical and Bibliographic Notes/Notes techniques et bibliographiques

The Institute has attempted to obtain the best original copy available for filming. Features of this copy which may be bibliographically unique, which may alter any of the images in the reproduction, or which may significantly change the usual method of filming, are checked below.

L'Institut a microfilmé le meilleur exemplaire qu'il lui a été possible de se procurer. Les détails de cet exemplaire qui sont peut-être uniques du point de vue bibliographique, qui peuvent modifier une image reproduite, ou qui peuvent exiger une modification dans la méthode normale de filmage sont indiqués ci-dessous.

Coloured covers/
Couverture de couleur

Covers damaged/
Couverture endommagée

Covers restored and/or laminated/
Couverture restaurée et/ou pelliculée

Cover title missing/
Le titre de couverture manque

Coloured maps/
Cartes géographiques en couleur

Coloured ink (i.e. other than blue or black)/
Encre de couleur (i.e. autre que bleue ou noire)

Coloured plates and/or illustrations/
Planches et/ou illustrations en couleur

Bound with other material/
Relié avec d'autres documents

Tight binding may cause shadows or distortion along interior margin/
La reliure serrée peut causer de l'ombre ou de la distorsion le long de la marge intérieure

Blank leaves added during restoration may appear within the text. Whenever possible, these have been omitted from filming/
Il se peut que certaines pages blanches ajoutées lors d'une restauration apparaissent dans le texte, mais, lorsque cela était possible, ces pages n'ont pas été filmées.

Additional comments:/
Commentaires supplémentaires:

Coloured pages/
Pages de couleur

Pages damaged/
Pages endommagées

Pages restored and/or laminated/
Pages restaurées et/ou pelliculées

Pages discoloured, stained or foxed/
Pages décolorées, tachetées ou piquées

Pages detached/
Pages détachées

Showthrough/
Transparence

Quality of print varies/
Qualité inégale de l'impression

Includes supplementary material/
Comprend du matériel supplémentaire

Only edition available/
Seule édition disponible

Pages wholly or partially obscured by errata slips, tissues, etc., have been refilmed to ensure the best possible image/
Les pages totalement ou partiellement obscurcies par un feuillet d'errata, une pelure, etc., ont été filmées à nouveau de façon à obtenir la meilleure image possible.

This item is filmed at the reduction ratio checked below/
Ce document est filmé au taux de réduction indiqué ci-dessous.

10X	14X	18X	22X	26X	30X
<input type="checkbox"/>	<input type="checkbox"/>	<input type="checkbox"/>	<input checked="" type="checkbox"/>	<input type="checkbox"/>	<input type="checkbox"/>
12X	16X	20X	24X	28X	32X

The copy filmed here has been reproduced thanks to the generosity of:

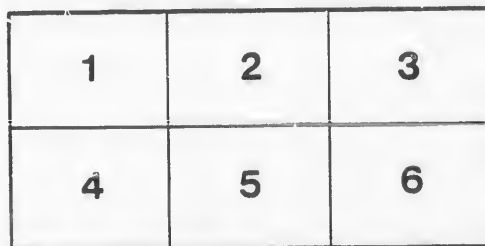
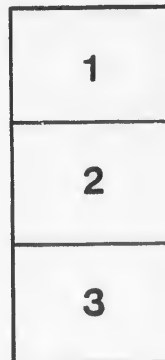
D. B. Weldon Library
University of Western Ontario
(Regional History Room)

The images appearing here are the best quality possible considering the condition and legibility of the original copy and in keeping with the filming contract specifications.

Original copies in printed paper covers are filmed beginning with the front cover and ending on the last page with a printed or illustrated impression, or the back cover when appropriate. All other original copies are filmed beginning on the first page with a printed or illustrated impression, and ending on the last page with a printed or illustrated impression.

The last recorded frame on each microfiche shall contain the symbol \rightarrow (meaning "CONTINUED"), or the symbol ∇ (meaning "END"), whichever applies.

Maps, plates, charts, etc., may be filmed at different reduction ratios. Those too large to be entirely included in one exposure are filmed beginning in the upper left hand corner, left to right and top to bottom, as many frames as required. The following diagrams illustrate the method:



L'exemplaire filmé fut reproduit grâce à la générosité de:

D. B. Weldon Library
University of Western Ontario
(Regional History Room)

Les images suivantes ont été reproduites avec le plus grand soin, compte tenu de la condition et de la netteté de l'exemplaire filmé, et en conformité avec les conditions du contrat de filimage.

Les exemplaires originaux dont la couverture en papier est imprimée sont filmés en commençant par le premier plat et en terminant soit par la dernière page qui comporte une empreinte d'impression ou d'illustration, soit par le second plat, selon le cas. Tous les autres exemplaires originaux sont filmés en commençant par la première page qui comporte une empreinte d'impression ou d'illustration et en terminant par la dernière page qui comporte une telle empreinte.

Un des symboles suivants apparaîtra sur la dernière image de chaque microfiche, selon le cas: le symbole \rightarrow signifie "A SUIVRE", le symbole ∇ signifie "FIN".

Les cartes, planches, tableaux, etc., peuvent être filmés à des taux de réduction différents. Lorsque le document est trop grand pour être reproduit en un seul cliché, il est filmé à partir de l'angle supérieur gauche, de gauche à droite, et de haut en bas, en prenant le nombre d'images nécessaire. Les diagrammes suivants illustrent la méthode.

VOTERS LIST

FOR THE VILLAGE OF

L U G A N,

For

THE YEAR 1883.

JOHN H. McCONNELL,
C L E R K .

The Sheriff shall, immediately upon receipt of his copies, cause one of them to be posted up in a conspicuous place in the Court House. The Clerk of the Peace, upon receipt of his copies, shall cause one of them to be posted up in a conspicuous place in his office. Every Public or Separate School Head Master or Mistress shall in like manner post up one of his or her copies on the door of the School House, and every Postmaster shall post up one of his copies in his Post Office.

39 Vic. chap. 11 sec. 2,

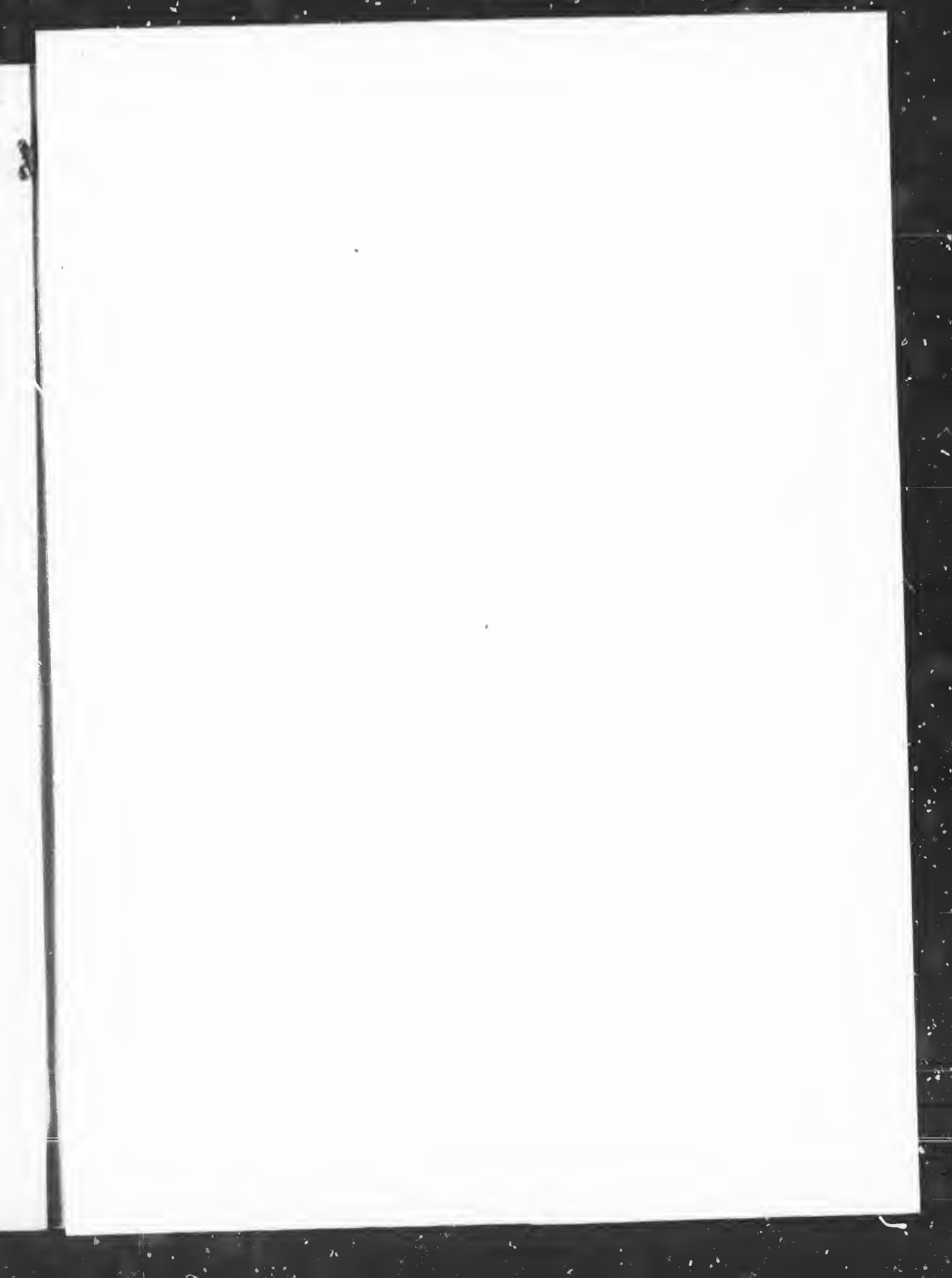
Printed at the Office of the "Lucan Enterprise."

.... 1883.

Division No. 1,--Part 1.

Parties entitled to Vote at both Municipal and Legislative
Assembly Elections.

No on Roll.	NAME	Con or Street.	Lot or part of lot.	Class
j 18	Armitage, James	Main,	256	h
j 33	Armitage, J. R.	Main,	pt 190	f
j 76	Atkinson, Joseph	Main,	pt 749	h
87	Abbott, J. B.	Alice,	14	f
j136	Alway, James	Alice,	pt 7	h
180	Atkins, John W.	William,	3	t
196	Alexander, John	Frank,	21	h
197	Atkinson, William	Frank,	pt 22	f
210	Atkinson, James P.	Water,	50	h
57	Atkinson, David	Main,	pt 5	f
57	Atkinson, Thomas T.	Main,	pt 5	t
	Armitage, William	Main, 103 & 104,	Butler, 126	t
17	Boyd, John	Main,	257 & 258	f
31	Ball, F. W.	Main,	pt 6	h
51	Butler, Ephriam	Main,	58 & 59	f
72	Bell, J. W. Rev.	Main,	pt 85	t
76	Bowey, William	Main,	pt 149	f
146	Bice, A.	Alice,	174 & 5, 6, 7,	f
j165	Blackwell, Edward	Market,	136	f
j195	Bawden, John	Frank,	20	h
206	Bowland, James	Water	54	h
229	Brand, Frederick	G. rge	pt 5	h
231	Butler, Peter	s. l. r.	pt 5	f
j232	Briegel, William	G. T. R. Co.		h
234	Butler, Peter E.	s. l. r.	pt 5	h
72	Bothwick, James	Main,	pt 85	h
1	Casey, Thomas	4th con.	pt 12	f
4	Casey, John	4th con.	pt 61	f
2	Carty, Con.	4th con.	pt 11	f
j 29	Cathcart, George	Princess	42	f
j 36	Collins, Henry	Main,	pt 187	t
j 44	Collins, William	Main,	pt 28 & 29	h
49	Cain, John F.	Water	31, 32, 33	t





No. on Roll,	NAME,	Con. or Street,	Lot or part of lot,	Class
51	Cook, Henry	Main	58, 59	h
j 83	Cann, Lewis	Main	pt 161	f
j133	Carey, Timothy	Alice	10	f
j141	Cathcart, Henry	Alice	168	f
153	Cooper, James	Market	101	f
j162	Clatterham, Charles	Market	130-1-2	h
215	Creighton, John	Water	44	f
j218	Cubbins, Thomas	William	pt 8	h
j220	Caves Robert	Water	40	f
233	Cosins, James	G. T. R. Co		h
236	Casey, Thomas	Butler	152, 153	f
j 48	Creighton, Thomas	Main	30	f
45	Drought, Richard	Main	pt 29	f
58	Dagg, Francis	Main	pt 5	f
j 78	Diamond, William	Main	pt 158	f
j140	Dight, Thomas	Alice	167	f
173	Davis, James	Maple	62	h
j174	Davis, William	Beech	61	f
j201	Dagg, John H.	Frank	25	f
223	Daub, John	George	74, 75	h
j224	Donoyan, William	George	72, 73	f
228	Davidson, John	George	60	f
192	Dight, Norris	Water	pt 18	f
j 50	Ellwood, William	Main	55, 56, 57	f
j 91	Ellis, G. A.	Main	pt 7	h
j163	Endicott, William,	Market	133, Beech 146	f
j204	Edwards, E.	Frank	6	h
225	Evans, John	George	71	h
171	Edwards, John	Beech	pt 4	f
j 42	Farrell, John	Main	pt 2	f
j 74	Fox, Leonard	Main	87	f
j 84	Fox, John	Main	pt 161	f
134	Fife, John	Alice	pt 8	h
j135	Frank, J. C.	Alice	pt 8	h
j166	Fulton, Samuel	4th Con.	162	f

No on Roll.	NAME	Con or Street.	Lot or part of lot	Class
j179	Fox, Robert	William	pt 4	f
j211	Fitzgerald, Gerald	Water	48, 49	f
191	Fisher, William	William	17	f
63	Guest, Robert	Main	101, 102, 103-4	f
j 73	Goodacre, Albert	Main	pt 86	t
j 82	Guest, William	Main	pt 160	h
j 87	Guilfoyle, John	Main	pt 163	h
j144	Gillis, James	Alice	170, 171, 172	f
164	Gormally, Patrick	Market	134, 135	h
212	Gibson, Herbert	Water	47	h
j213	Gibson, Sylvanus	William	76, 77	f
114	Gillespie, James	Wellington	233	f
27	Grundy, William	Princess	pt 200, 201	f
11	Haskett, Thomas W.	Main	265	f
38	Hodgins, W. B.	Main	pt 187	f
54	Harding, John	Main	pt 5	h
57	Hindson, William	Main	pt 5	h
j 59	Hall, Thomas	Main	pt 4	f
j 60	Hall, Joseph	Main	pt 4	t
j 79	Hodgins, James B.	Main	pt 159	h
j 90	Hodgins, Thomas	Main	pt 164	h
j 93	Hossack, Thomas	Main	239, 241, 242	f
97	Hodgins John B.	Main	pt 250	t
111	Howard, William,	4th con,	226, 227, 228,	f
129	Haskett, Mitchell	Alice	15, 16, 17	f
142	Hodgins, William	Alice	pt 169	h
j155	Hodgins, Jonathan	Market	pt 99	t
j156	Haskett, William	Market	97, 93	f
154	Hodgins, John	Market	pt 100	r
j158	Hooper, William E.	Market,	94, 95, 63, 64	f
159	Hooper, William E. jun,	n. l. r.	pt 5	t
j161	Haskett, Charles	Market 89,	Butler 134	t
j168	Hogg, William	4th con.	pt 3	h
j178	Haskett, Robert	William	pt 5	f
j181	Husband, Thomas	William	3	h
j187	Hodgins, J. A.	s. l. r.	pt 5	t

No. on Roll.

j189
j193
194
200
j200
j240

121
j146
j183
231

j 6
14
17

j
j
1

t Class
 f
 f
 f
 f
 t
 h
 h
 f
 h
 h
 f
 f
 f
 h
 h
 f
 f
 f
 h
 t
 f
 f
 t
 t
 h
 f
 h
 f

No. on Roll,	NAME,	Con. or Street,	Lot or part of lot,	Class
j189	Hodgins, Isaac	s. l. r.	pt 5	t
j193	Hodgins, George	William	pt 18	t
194	Hodgins, John H.	Frank	19	t
200	Hodgins, John	Frank	24	t
j200	Hodgins, Edward R.	Frank	24	h
j240	Hutchins, W. H.	G. T. R	grain store	f
121	Jackson, Rev. George	Princess	206-7	h
j146	Jackson, John	Alice	174-5-6-7	h
j183	Judge, John	William	7-13	t
237	Judd, Isaac	Butler	pt 149	h
j 9	Kitt, Thomas	Main	267	f
61	Kent, William	do.	115, 116, 117	f
149	Kenney, John	Alice	184	f
172	Kenney, John S.	Maple	62	t
66	Lewis, Joseph	Main	93, 94	t
j 68	Lynch, Joseph	do.	pt 91	h
j 68	Lynch, F. J.	do	pt 91	t
118	Langlois, Joseph	Princess	35, 36	f
154	Lewis, William	Market	pt 100	h

No on Roll.	NAME	Con or Street.	Lot or part of lot	Class
184	Lowery, Robert	William	8	f
90	Lusk, James	Main	pt 164	f
	2 McKinnon, D.	4th con.	11	h
j 13	Mayo, James	Main	261, 262,	t
j 25	McRoberts, Charles	Princess	203, 204	f
j 27	McRoberts, J. W.	do.	pt 200, 201	h
j 28	Mara, E.	do.	pt 199, 200	f
j 34	McLean, Robert	Main	188, 189	t
32	McMehen, John	do.	191, pt 192	t
35	McLean, Samuel	Beech	5, 6	h
j 37	McDiarmid, William,	Main	pt 187	t
41	Moncton, Richard	do.	pt 1	h
j 46	McConnell, John H.	do.	pt 29, 84, 85	t
47	Murphy, Hugh	do.	30	t
53	Magahy, Rev. T. W.	do.	pt 5	h
j 64	McCosh, J. D.	do.	95, 96	f

No. on Roll,	Name,	Con. or Street,	Lot or part of lot,	Class
69	Murdoch, Thompson	Main	pt 90	h
70	Murdy, John	do.	81	f
71	McLeod, William	do.	82	f
75	Matheson, William	do.	88	f
77	McFalls, Alexander	do.	pt 157, 158	h
80	McCosh, Daniel	do.	pt 159	h
81	Monro, Frank	do.	pt 160	h
89	McIlhargey, John, M. D.	do.	pt 163	h
95	Marshall, James	do.	246, 247, 248	f
j119	McLean, William J.	Princess	37	f
j120	McLean, Isaac	do.	38	f
123	McRoberts, David	do.	210, 211	f
131	McDonald, W. A.	Alice	12	f
j132	Maguire, John	do.	9, 11	f
j139	McRoberts, J. H.	do.	165	f
j223	Morrow, Thomas	George	74, 75,	f
218	McKizes, M.	William	pt 8	f
j208	McFalls, William	Water	52	f
j 80	McIlhargey, Benjamin	Main	pt 159	f
j 79	McIlhargey, John	do.	pt 159	f
54	McIlhargey, Patrick	do.	pt 3	f
j114	Nation, Arthur	Wellington	233	h
192	Norton, Thomas	Water	pt 18	h
j198	Neil, Richard	Frank	pt 23	f
136	Neil, Albert	Alice	pt 7	f
j 67	Nevils, John	Main	92	f
86	Neil, D.	do.	pt 163	f
j 22	O'Neil, R. H.	Main	253	f
23	O'Neil, Daniel	Park lot	64	f
28	O'Donohue, John	Main	pt 158	f
j 42	Orme, J. W.	do.	pt 28	h
43	Orme, Thomas	co.	26	f
j 88	Oldham, Fred	do.	pt 163	h
150	Otterson, James	Market	105,-6,-7,-8,	f

No on Roll.	NAME	Con or Street.	Lot or part of lot	Class
j 32	Porte, William	Main	pt 191, 192	h
98	Patrick, William	Main 251, 4th con.	229, 230	f
138	Pratt, William	Alice	pt 165	f
j160	Purley, Daniel	Market	84, 85	f
191	Porte, George	William	17	h
j 62	Quigley, William jun.	Main	105, 106	h
151	Quigley, William sen.	Market	104	f
203	Quarry, H. B.	Frank	5	f
134	Quarry, W. B.	Alice	pt 8	f
26	Rigney, John	Princess	202	f
j137	Rollins, William	Alice	pt 165	f
152	Robinson, Thomas	Market	103	f
222	Robinson, Henry	Water	34	f
3	Sheridan, James	4th con.	pt 10	f
j 6	Shaver, William	Main	270	f
12	Scott, Adam	Main	263, 264	f
j 17	Stanley, William	Main	257, 258	h
j 52	Stanley, Bernard	Main	part farm 5	f
j 65	Stanley, W. E.	Main	95, 96	f
j 62	Stanley, W. R.	Main	105, 106	f
j 92	Saunders, C. W.	Main	236, 7, 8	f
115	Sadler, John	Francis	31	f
116	Sadler, Francis	Princess	214-15-16	f
157	Stewartson, James	Market	95, 96	f
177	Sproat, James	William	5	f
j184	Shoebottom, G. M.	William	8	f
j199	Sproul, Charles	Frank	pt 23	f
209	Stanley, Thomas	Water	51	f
j230	Stanley, Albert	George	61, 62	f
j229	Stanley, Charles	George	pt 5	f
239	Stewartson, James jun.	n. l. r.	pt 5	h
81	Smith, Kon. Frank	Main	pt 160	f
186	Smyth, Montgomery	Main	pt 163	h
j 55	Shaw, Thomas	Main	pt 5	f

No. o
Roll
14
j 91
j176
175
181
214
238
j 24
39
112
148
205
227
I
Vill
by
con
pea
nici
the
tute
by
in s
nur
fied
and
list
in,
cor
I

No. on Roll,	NAME,	Con, or Street,	Lot or part of lot,	Class
14	Travitt, Samuel	Elm,	pt 69	f
j 91	Thoms, J. S.	Main,	pt 7	f
j 176	Tennent, E.	William,	pt 6	h
175	Thurman, Green	Beech,	189, 60	f
181	Thompson, Joshua	William,	2	f
214	Thompson, John	Water,	45, 46	f
238	Turner, Elijah	Walnut,	154, 155, 164	f
j 24	Wilson, James	Princess,	205	h
39	Watt, J. C.	Main,	pt 187	f
112	Whelan, Daniel	4th con,	224, 225	f
148	Woods, Alexander	Alice,	179 80, 81,	f
205	Walker, William	Frank	7	h
227	Whelan, John	George,	63	h

I, J. H. McCONNELL, Clerk of the Municipality of the Village of LUCAN, in the County of Middlesex, do hereby certify that parts one and three of the within Voters List, constitute a correct list, for the year 1883, of all persons appearing, by the last revised Assessment Roll of the said Municipality, to be entitled to vote at Elections for members of the Legislative Assembly, and that parts one and two constitute a correct list, for the said year, of all persons appearing by the said Roll to be entitled to vote at Municipal Elections in said Municipality; and I do also certify that the aggregate number of names of persons upon the said list, who are qualified to serve on juries is One Hundred and Eight, (108) and I hereby call upon all Electors to examine the said list, and if any omissions or other errors are perceived therein, to take immediate proceedings to have the said errors corrected according to law.

Dated this 30th day of July, 1883.

J. H. McCONNELL,
Clerk of the aforesaid Municipality.
Lucan Post Office.

