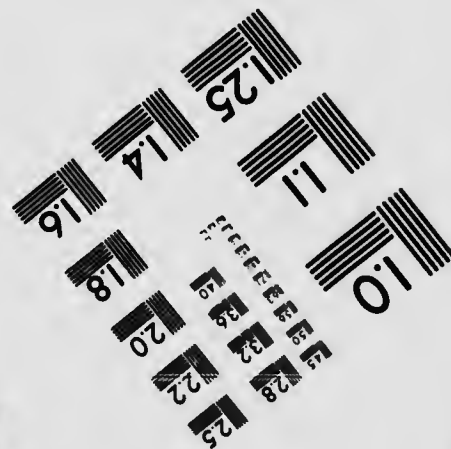
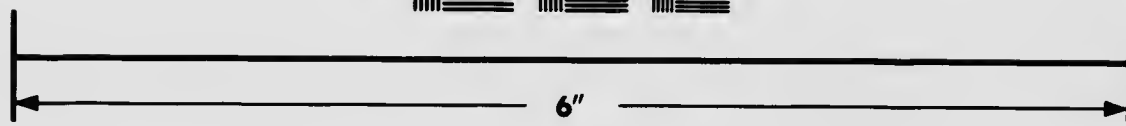
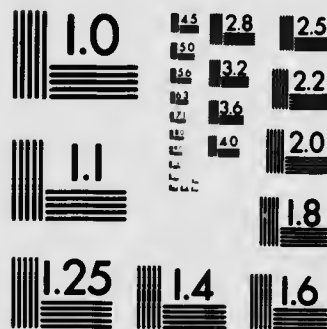


**IMAGE EVALUATION
TEST TARGET (MT-3)**



**Photographic
Sciences
Corporation**

23 WEST MAIN STREET
WEBSTER, N.Y. 14580
(716) 872-4503

**CIHM
Microfiche
Series
(Monographs)**

**ICMH
Collection de
microfiches
(monographies)**



Canadian Institute for Historical Microreproductions / Institut canadien de microreproductions historiques

© 1992

Technical and Bibliographic Notes / Notes techniques et bibliographiques

The Institute has attempted to obtain the best original copy available for filming. Features of this copy which may be bibliographically unique, which may alter any of the images in the reproduction, or which may significantly change the usual method of filming, are checked below.

L'Institut a microfilmé le meilleur exemplaire qu'il lui a été possible de se procurer. Les détails de cet exemplaire qui sont peut-être uniques du point de vue bibliographique, qui peuvent modifier une image reproduite, ou qui peuvent exiger une modification dans la méthode normale de filmage sont indiqués ci-dessous.

Coloured covers/
Couverture de couleur

Coloured pages/
Pages de couleur

Covers damaged/
Couverture endommagée

Pages damaged/
Pages endommagées

Covers restored and/or laminated/
Couverture restaurée et/ou pelliculée

Pages restored and/or laminated/
Pages restaurées et/ou pelliculées

Cover title missing/
Le titre de couverture manque

Pages discoloured, stained or foxed/
Pages décolorées, tachetées ou piquées

Coloured maps/
Cartes géographiques en couleur

Pages detached/
Pages détachées

Coloured ink (i.e. other than blue or black)/
Encre de couleur (i.e. autre que bleue ou noire)

Showthrough/
Transparence

Coloured plates and/or illustrations/
Planches et/ou illustrations en couleur

Quality of print varies/
Qualité inégale de l'impression

Bound with other material/
Relié avec d'autres documents

Continuous pagination/
Pagination continue

Tight binding may cause shadows or distortion along interior margin/
La reliure serrée peut causer de l'ombre ou de la distorsion le long de la marge intérieure

Includes index(es)/
Comprend un (des) index

Title on header taken from: /
Le titre de l'en-tête provient:

Blank leaves added during restoration may appear within the text. Whenever possible, these have been omitted from filming/
Il se peut que certaines pages blanches ajoutées lors d'une restauration apparaissent dans le texte, mais, lorsque cela était possible, ces pages n'ont pas été filmées.

Title page of issue/
Page de titre de la livraison

Caption of issue/
Titre de départ de la livraison

Masthead/
Générique (périodiques) de la livraison

Additional comments: /
Commentaires supplémentaires:

This item is filmed at the reduction ratio checked below/
Ce document est filmé au taux de réduction indiqué ci-dessous.

10X	12X	14X	16X	18X	20X	22X	24X	26X	28X	30X	32X
					✓						

The copy filmed here has been reproduced thanks to the generosity of:

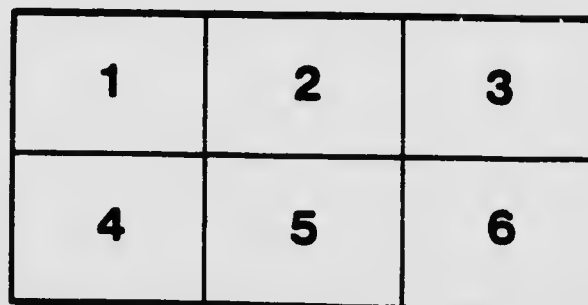
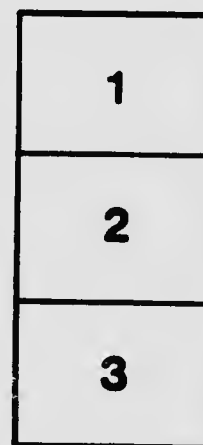
Library of the National
Archives of Canada

The images appearing here are the best quality possible considering the condition and legibility of the original copy and in keeping with the filming contract specifications.

Original copies in printed paper covers are filmed beginning with the front cover and ending on the last page with a printed or illustrated impression, or the back cover when appropriate. All other original copies are filmed beginning on the first page with a printed or illustrated impression, and ending on the last page with a printed or illustrated impression.

The last recorded frame on each microfiche shall contain the symbol \rightarrow (meaning "CONTINUED"), or the symbol ∇ (meaning "END"), whichever applies.

Maps, plates, charts, etc., may be filmed at different reduction ratios. Those too large to be entirely included in one exposure are filmed beginning in the upper left hand corner, left to right and top to bottom, as many frames as required. The following diagrams illustrate the method:



L'exemplaire filmé fut reproduit grâce à la générosité de:

La bibliothèque des Archives
nationales du Canada

Les images suivantes ont été reproduites avec le plus grand soin, compte tenu de la condition et de la netteté de l'exemplaire filmé, et en conformité avec les conditions du contrat de filmage.

Les exemplaires originaux dont la couverture en papier est imprimée sont filmés en commençant par le premier plat et en terminant soit par la dernière page qui comporte une empreinte d'impression ou d'illustration, soit par le second plat, selon le cas. Tous les autres exemplaires originaux sont filmés en commençant par la première page qui comporte une empreinte d'impression ou d'illustration et en terminant par la dernière page qui comporte une telle empreinte.

Un des symboles suivants apparaîtra sur la dernière image de chaque microfiche, selon le cas: le symbole \rightarrow signifie "A SUIVRE", le symbole ∇ signifie "FIN".

Les cartes, planches, tableaux, etc., peuvent être filmés à des taux de réduction différents. Lorsque le document est trop grand pour être reproduit en un seul cliché, il est filmé à partir de l'angle supérieur gauche, de gauche à droite, et de haut en bas, en prenant le nombre d'images nécessaire. Les diagrammes suivants illustrent la méthode.



National Archives
of Canada

Archives nationales
du Canada

BARNETT

MG 30 B86 Vol 464 Cat 9

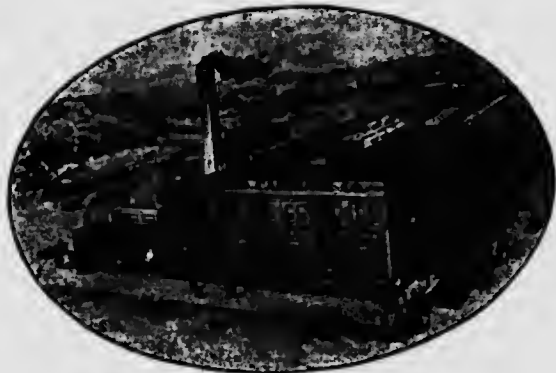
Established 1

T

Established 1870

Incorporated 1904.

THE BORLAND CARRIAGE COMPANY, LIMITED



Manufacturers of High Grade Carriages and Sporting Vehicles

Stratford, - Canada

..INTRODUCTORY..

WE beg to call the attention of horsemen to our New Century and 20th Century Improved Sulkies which for this season have many new features, consisting of new shaped shafts, new pattern of truss axle and wheel forks, tubing braces, etc. Also wish to call special attention to our line of Training Carts, cuts of which are shown herein. The latter are so constructed as to prevent a rearing horse from going over backwards, thereby ensuring safety of the driver.

Our Long Shaft Sulky is not unlike our other lines and is a marvel for strength and durability. It also serves the purpose of a training cart and is used for speeding and matinee purposes. The Long Shaft Sulky is so constructed as to pass through any space that the horse can go through and without striking the wheels.

These vehicles are the product of many years of careful study and experiment and we believe are as near perfection as any similar work built in the world.

We put the best skilled labor that can possibly be procured in these vehicles and as for stock consisting of second growth ash and hickory, seamless steel tubing, Swede's iron, etc., it is the best that money can buy.

We use nothing but the highest grade wire wheels, having hubs of our own design; cups and cones of the best tool steel; best piano wire spokes, swagged and double butted; best laminated or wood rims. In tires we give you a choice of Hartford or Dunlop (double tube), the latter being our preference and are made especially for our sulkies.

We submit the following for your careful inspection and respectfully solicit your valued patronage.

THE BORLAND CARRIAGE COMPANY, Limited.

BARNETT MG 3086 V-464 5.19

We hitch the Dollar with the biggest load it ever pulled.

New Century

Price, \$90.00

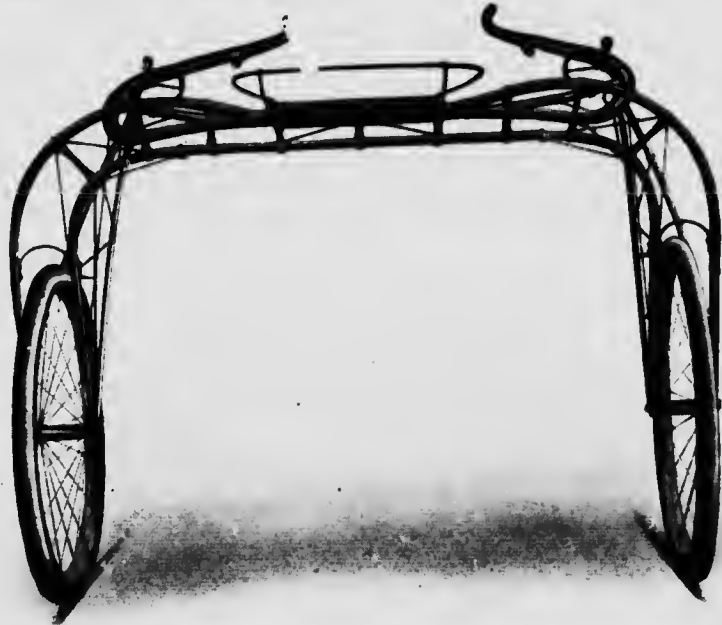
Cushion with weight pocket,
\$3.00 extra.

...ty inches.

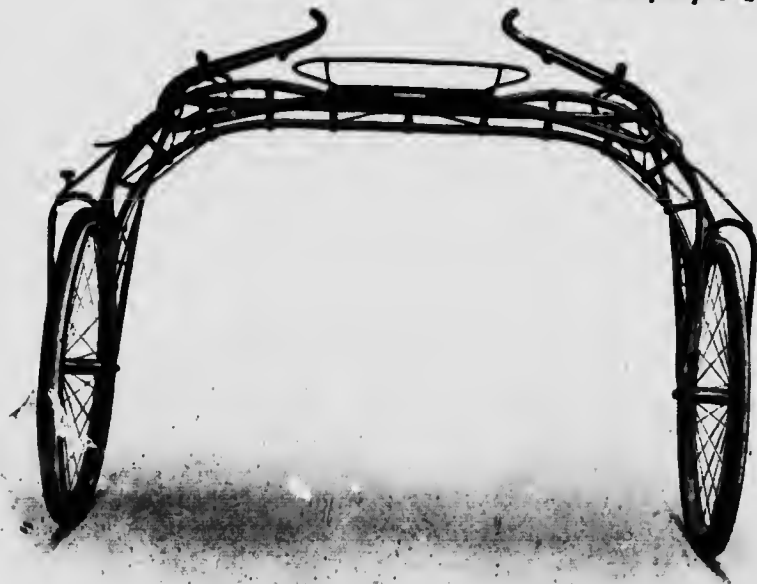
**THE BORLAND CARRIAGE
COMPANY, Limited**

Stratford, - Canada

*Largest Manufacturers in Can-
ada of Sporting Vehicles.*



We save you money. It costs some people a lot to find that out.



**20th Century
Improved**

Price, - \$85.00

Cushion with weight pocket,
\$3.00 extra.

**THE BORLAND GARRIAGE
COMPANY, Limited**

Stratford, - Canada

*Largest Manufacturers in Can-
ada of Sporting Vehicles.*

Our vehicles cost no more money, and, like a hornet, "are all right in the end."

20th Century

Price, \$80.00

Cushion with weight pocket,
\$3.00 extra.

**THE BORLAND CARRIAGE
COMPANY, Limited**

Stratford, - Canada

*Largest Manufacturers in Can-
ada of Sporting Vehicles.*



Sincerity is our silent partner, but not a sleeping one.



**THE BORLAND CARRIAGE
COMPANY, Limited**

Stratford, - Canada

*Largest Manufacturers in Can-
ada of Sporting Vehicles.*

***Truss Axle and
Truss Bar Sulky***

Price, \$70.00

Cushion with weight pocket,
\$3.00 extra.

Fitted with wire instead of
wood wheels.

Our vehicles are second to none.



Long Shaft Sulky

NOTHING EQUALS A LONG SHAFT SULKY FOR
TRAINING OR MATINEE PURPOSES.

Price, including screen, \$80.00

Cushion with weight pocket, \$3.00 extra.

THE BORLAND CARRIAGE COMPANY, Limited
Stratford, - Canada

Largest Manufacturers in Canada of Sporting Vehicles.

After you have tried all others, try ours. They are good ones.

Truss Axle Bike Jogging Cart

DESIGNED FOR MATINEES OR LIGHT DRIVING.

Price, \$60.00

Cushion with weight pocket, \$3.00 extra.

THE BORLAND CARRIAGE COMPANY, Limited

Stratford, - Canada

Largest Manufacturers in Canada of Sporting Vehicles.



Raised in Stratford—sold everywhere.

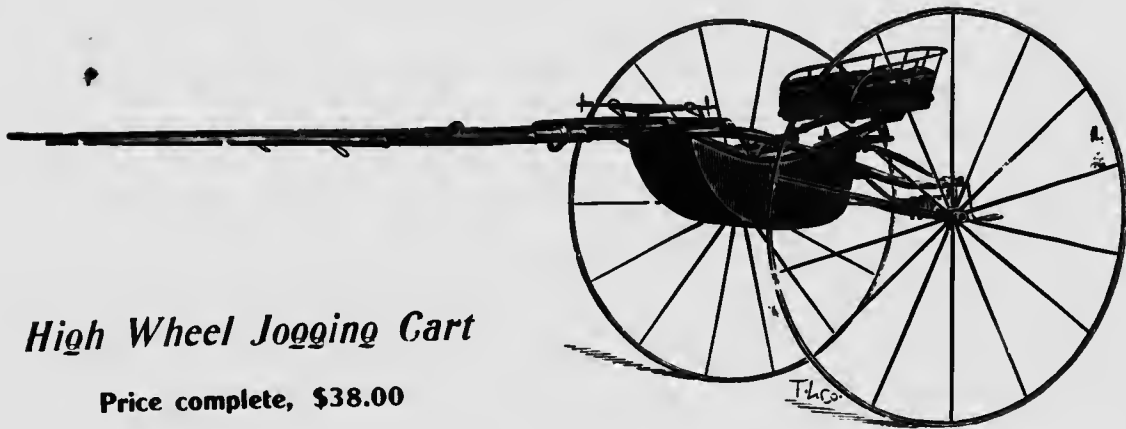


Training Cart

Price, \$60.00

THE BORLAND CARRIAGE COMPANY, Limited, - - - **Stratford, Canada**
Largest Manufacturers in Canada of Sporting Vehicles.

A favorite for all light driving purposes.



High Wheel Jogging Cart

Price complete, \$38.00

THE BORLAND CARRIAGE COMPANY, Limited, - - Stratford, Canada

Largest Manufacturers in Canada of Sporting Vehicles.

Rigid, roomy, and no spreading of runners.

*Hercules
Speeder*

**Price complete,
\$50.00**



... TERMS ...

ALL WORK thoroughly warranted as represented (with the exception of Pneumatic Tires, which guaranteed only so far as they are guaranteed by the makers to us).

We pay no repair bills.

When any repairs are claimed under the guarantee, the defective parts must be returned, carriage prepaid, for inspection.

No goods will be sent out on commission under any circumstances.

Terms Strictly Cash, except to dealers who have a satisfactory rating or furnish references as to credit.

All work crated and delivered F. O. B. cars here free of charge, when our responsibility ceases.

Any damages occurring in transit at risk of consignee, whose redress is against the R. R. Co. or Express Co.

All goods should be examined before acceptance from carriers.

All telegrams must be prepaid. We pay ours. Customers must do the same.

