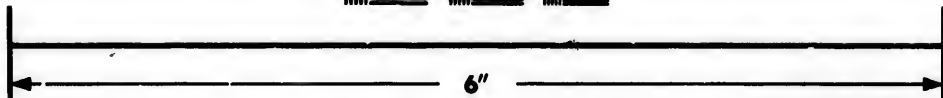
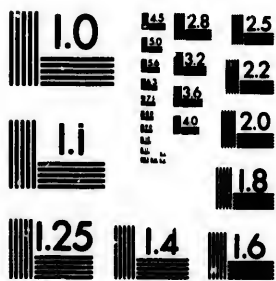


**IMAGE EVALUATION
TEST TARGET (MT-3)**



**Photographic
Sciences
Corporation**

23 WEST MAIN STREET
WEBSTER, N.Y. 14580
(716) 873-4503



**CIHM/ICMH
Microfiche
Series.**

**CIHM/ICMH
Collection de
microfiches.**



Canadian Institute for Historical Microreproductions / Institut canadien de microreproductions historiques



© 1984

Technical and Bibliographic Notes/Notes techniques et bibliographiques

The Institute has attempted to obtain the best original copy available for filming. Features of this copy which may be bibliographically unique, which may alter any of the images in the reproduction, or which may significantly change the usual method of filming, are checked below.

L'Institut a microfilmé le meilleur exemplaire qu'il lui a été possible de se procurer. Les détails de cet exemplaire qui sont peut-être uniques du point de vue bibliographique, qui peuvent modifier une image reproduite, ou qui peuvent exiger une modification dans la méthode normale de filmage sont indiqués ci-dessous.

- | | |
|---------------------------------------------------------------------------------------------------------------------------------------------------------------------------------------------------------------------------------------------------------------------------------------------------------------------------------|-----------------------------------------------------------------------------------------------------------------------------------------------------------------------------------------------------------------------------------------------------------------------------------------------------------------------------|
| <input type="checkbox"/> Coloured covers/
Couverture de couleur | <input type="checkbox"/> Coloured pages/
Pages de couleur |
| <input type="checkbox"/> Covers damaged/
Couverture endommagée | <input type="checkbox"/> Pages damaged/
Pages endommagées |
| <input type="checkbox"/> Covers restored and/or laminated/
Couverture restaurée et/ou pelliculée | <input type="checkbox"/> Pages restored and/or laminated/
Pages restaurées et/ou pelliculées |
| <input type="checkbox"/> Cover title missing/
Le titre de couverture manque | <input checked="" type="checkbox"/> Pages discoloured, stained or foxed/
Pages décolorées, tachetées ou piquées |
| <input type="checkbox"/> Coloured maps/
Cartes géographiques en couleur | <input type="checkbox"/> Pages detached/
Pages détachées |
| <input type="checkbox"/> Coloured ink (i.e. other than blue or black)/
Encre de couleur (i.e. autre que bleue ou noire) | <input checked="" type="checkbox"/> Showthrough/
Transparence |
| <input type="checkbox"/> Coloured plates and/or illustrations/
Planches et/ou illustrations en couleur | <input type="checkbox"/> Quality of print varies/
Qualité inégale de l'impression |
| <input type="checkbox"/> Bound with other material/
Relié avec d'autres documents | <input type="checkbox"/> Includes supplementary material/
Comprend du matériel supplémentaire |
| <input type="checkbox"/> Tight binding may cause shadows or distortion along interior margin/
La reliure serrée peut causer de l'ombre ou de la distortion le long de la marge intérieure | <input type="checkbox"/> Only edition available/
Seule édition disponible |
| <input type="checkbox"/> Blank leaves added during restoration may appear within the text. Whenever possible, these have been omitted from filming/
Il se peut que certaines pages blanches ajoutées lors d'une restauration apparaissent dans le texte, mais, lorsque cela était possible, ces pages n'ont pas été filmées. | <input type="checkbox"/> Pages wholly or partially obscured by errata slips, tissues, etc., have been refilmed to ensure the best possible image/
Les pages totalement ou partiellement obscurcies par un feuillet d'errata, une pelure, etc., ont été filmées à nouveau de façon à obtenir la meilleure image possible. |
| <input type="checkbox"/> Additional comments:
Commentaires supplémentaires: | |

This item is filmed at the reduction ratio checked below/
Ce document est filmé au taux de réduction indiqué ci-dessous.

10X	14X	18X	22X	26X	30X
<input type="checkbox"/>	<input type="checkbox"/>	<input type="checkbox"/>	<input checked="" type="checkbox"/>	<input type="checkbox"/>	<input type="checkbox"/>
12X	16X	20X	24X	28X	32X

The co
to the

The im
possib
of the
filming

Origin
beginn
the las
sion, o
other p
sion, a
or illus

The la
shall c
TINUE
which

Maps,
differ
entire
beginn
right a
requir
metho

The copy filmed here has been reproduced thanks to the generosity of:

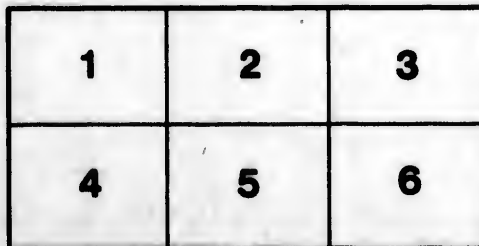
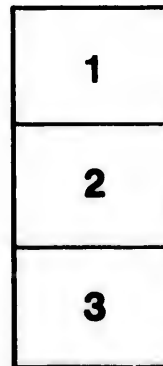
National Library of Canada

The images appearing here are the best quality possible considering the condition and legibility of the original copy and in keeping with the filming contract specifications.

Original copies in printed paper covers are filmed beginning with the front cover and ending on the last page with a printed or illustrated impression, or the back cover when appropriate. All other original copies are filmed beginning on the first page with a printed or illustrated impression, and ending on the last page with a printed or illustrated impression.

The last recorded frame on each microfiche shall contain the symbol \rightarrow (meaning "CONTINUED"), or the symbol ∇ (meaning "END"), whichever applies.

Maps, plates, charts, etc., may be filmed at different reduction ratios. Those too large to be entirely included in one exposure are filmed beginning in the upper left hand corner, left to right and top to bottom, as many frames as required. The following diagrams illustrate the method:



L'exemplaire filmé fut reproduit grâce à la générosité de:

Bibliothèque nationale du Canada

Les images suivantes ont été reproduites avec le plus grand soin, compte tenu de la condition et de la netteté de l'exemplaire filmé, et en conformité avec les conditions du contrat de filmage.

Les exemplaires originaux dont la couverture en papier est imprimée sont filmés en commençant par le premier plat et en terminant soit par la dernière page qui comporte une empreinte d'impression ou d'illustration, soit par le second plat, selon le cas. Tous les autres exemplaires originaux sont filmés en commençant par la première page qui comporte une empreinte d'impression ou d'illustration et en terminant par la dernière page qui comporte une telle empreinte.

Un des symboles suivants apparaîtra sur la dernière image de chaque microfiche, selon le cas: le symbole \rightarrow signifie "A SUIVRE", le symbole ∇ signifie "FIN".

Les cartes, planches, tableaux, etc., peuvent être filmés à des taux de réduction différents. Lorsque le document est trop grand pour être reproduit en un seul cliché, il est filmé à partir de l'angle supérieur gauche, de gauche à droite, et de haut en bas, en prenant le nombre d'images nécessaire. Les diagrammes suivants illustrent la méthode.

ire
détails
des du
modifier
per une
filmage

és

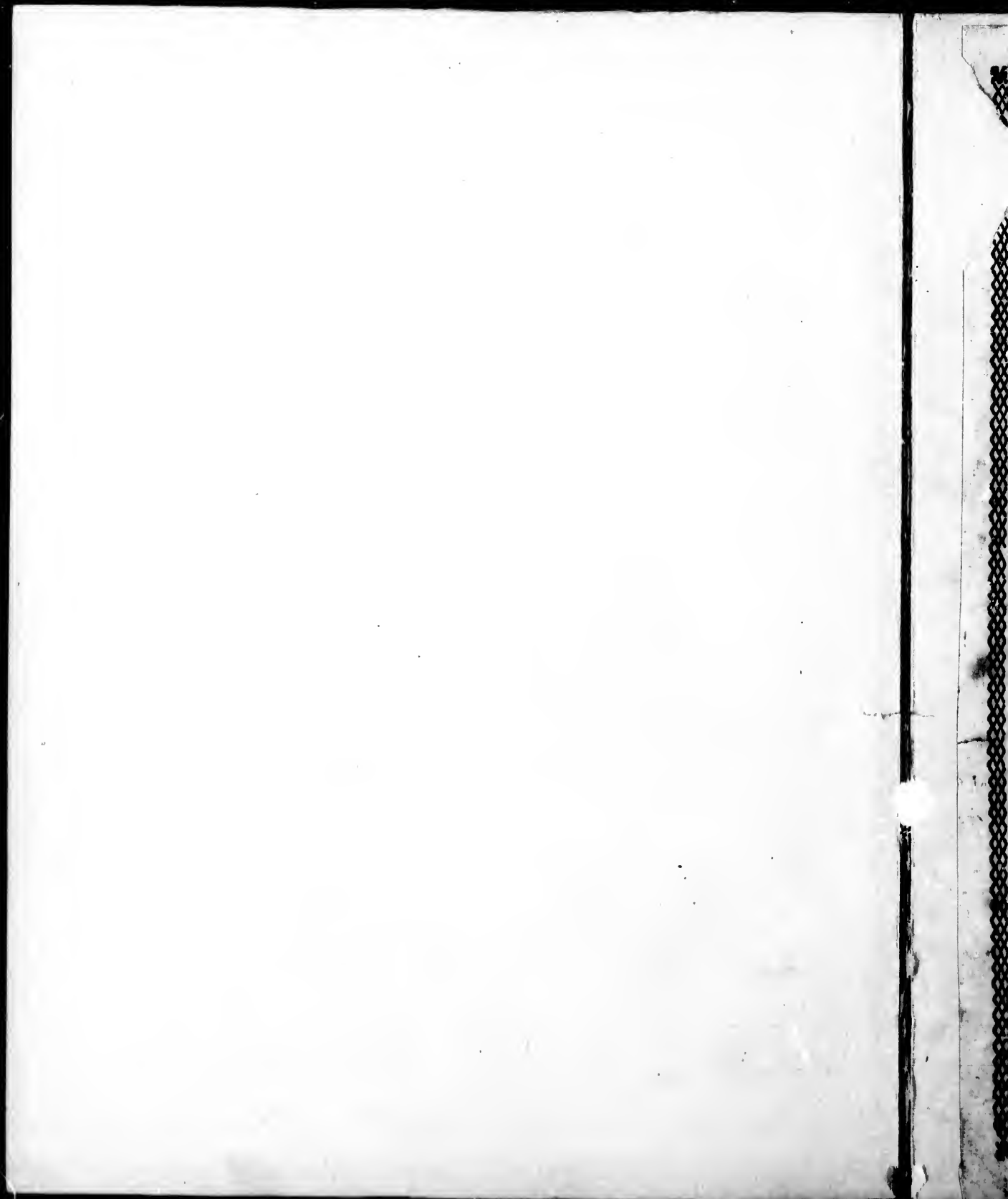
re

y errata
ed to

nt
ne pelure,
çon à



32X



NEW YEAR'S VERSES

OF THE PRINTER'S BOY THAT CARRIES

THE QUEBEC MERCURY,

Most respectfully addressed to the Subscribers.

QUEBEC, 1st January, 1811.

Hail, Janus, with the double face,
Thy backward view help me to trace,
From past events, that I may chuse
Fit subjects for an humble Muse,
Whose duty 'tis news to expand
'Mongst such as read and understand;
Who true from false know to distinguish,
And doctrines vicious to relinquish:
Who, if the demagogue hold out
His tinsel to the assembled rout,
Howe'er his country's love he boast,
See clearly, self is uppermost:
Who keep, whate'er party may say,
The even tenor of their way;
And faction's sophistry eschew,
To king and country ever true.
Such fitted are to learn Fate's turns,
Their own, and the wide world's concerns;

Does it hence follow that the blind,
Unletter'd, uninform'd of mind,
Have faculties for catoptics,
Or what far worse is, politics?
Can their blank intellects be bent
Lectures to learn on government?
Would it not more with sense agree,
To learn them first their A, B, C,
Than to begin at the wrong end,
And make to cakes, order bend?
Is this not nature to distort,
And with mere matter mind assort?
Of things their fitness to confound,
Giving to blocks reason profound;
And thus, by one fatal mistake,
The demon Anarchy awake?

Thus late philosophers of France,
Too early led round Holbein's dance;
And the dire circle heedless drew in,
Myriads to follow their undoing,
And why? because they wildly hit
On any thing but systems fit—
Not for the many what would do
They chose—but what would please the few,

A grand monarch to love and fear,
His very errors to repeat;
By habit, custom, taste, fashion,
Deep-rooted prejudice and passion;
By every bias that could bend,
And make man's nature one way tend;
By all of these, a Frenchman's soul
Was moulded to the crown's controul,

Yet this, philosophers suppos'd
Was of that ductile stuff compos'd,
To take of any cast the shape,
Bear, badger, mastiff, cur or ape;
Or if they must retain the man,
To take the form republican.

True 'tis that force may sometimes bend
The stiffest bow, and make it tend
From one strait line to a small curve,
And from its nature somewhat swerve;
But let that force its pow'r decline,
The bow resumes its pristing line:
So man, by an impulsive thrust,
May ev'ry tie of nature burst;
But take th' impelling pow'r away,
Habit recovers its full sway.
Thus Frenchmen's lips, by force might squeak,]
Like parrots, *Vive la Republique*;
But then the heart—what says it? hark!
Its cry is *Vive le grand monarque*.

Had Revolutionists been wise,
And the heart's bias known to prize,
And taken, when for charge full ripe,
Great Britain for a prototype;
What crimes, which Frenchmen now disgrace,
Might thus have never taken place:
Nay more, of happiness what store
On France might providence then show'r;
For arts renown'd and liberty,
The suffering world she might set free;
Such an example could not fail,
O'er sway tyrannic, to prevail.

Now, sad reverse! power's iron reign
Europe has link'd in one vast chain;
Whilst, with Astrea, Freedom flies
To seek a shelter in the skies.

But, heav'n be prais'd, Napoleon's sway,
Britannia's thunders keep at bay;
Hence, security is ours,
Where-ever else the tempest lowers.

Enough—except one short word more
From him who, weekly, to your door,
In sleet, in snow, in rain, in hail,
Has never yet been known to fail
To bring the news, be't good or bad,
Pleas'd when the best is to be had.
Need I add more?—a word to the wise
And generous, will here suffice;
'Twere sin to doubt such can be civil,
When in rhyme tempted by—*THE DEVIL*.

