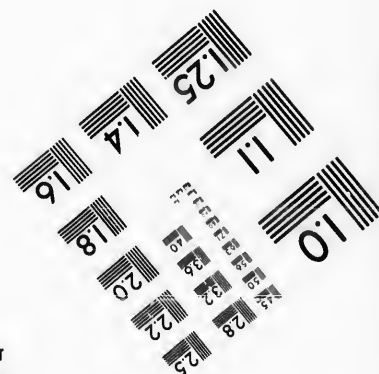
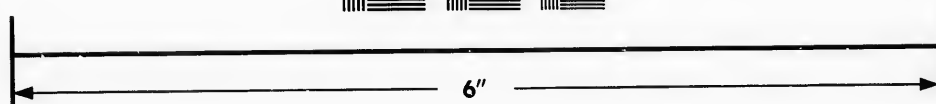
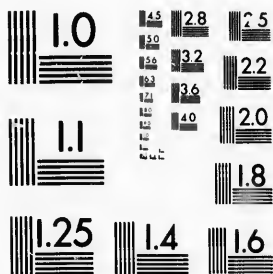


**IMAGE EVALUATION
TEST TARGET (MT-3)**



**Photographic
Sciences
Corporation**

23 WEST MAIN STREET
WEBSTER, N.Y. 14580
(716) 872-4503

14
18
22
25
28
32
36
40
44
48

**CIHM/ICMH
Microfiche
Series.**

**CIHM/ICMH
Collection de
microfiches.**



Canadian Institute for Historical Microreproductions / Institut canadien de microreproductions historiques

10
14
18
22
26
30
34
38
42
46
50

© 1987

Technical and Bibliographic Notes/Notes techniques et bibliographiques

The Institute has attempted to obtain the best original copy available for filming. Features of this copy which may be bibliographically unique, which may alter any of the images in the reproduction, or which may significantly change the usual method of filming, are checked below.

L'Institut a microfilmé le meilleur exemplaire qu'il lui a été possible de se procurer. Les détails de cet exemplaire qui sont peut-être uniques du point de vue bibliographique, qui peuvent modifier une image reproduite, ou qui peuvent exiger une modification dans la méthode normale de filmage sont indiqués ci-dessous.

- | | |
|--|--|
| <input checked="" type="checkbox"/> Coloured covers/
Couverture de couleur | <input type="checkbox"/> Coloured pages/
Pages de couleur |
| <input type="checkbox"/> Covers damaged/
Couverture endommagée | <input type="checkbox"/> Pages damaged/
Pages endommagées |
| <input type="checkbox"/> Covers restored and/or laminated/
Couverture restaurée et/ou pelliculée | <input type="checkbox"/> Pages restored and/or laminated/
Pages restaurées et/ou pelliculées |
| <input type="checkbox"/> Cover title missing/
Le titre de couverture manque | <input checked="" type="checkbox"/> Pages discoloured, stained or foxed/
Pages décolorées, tachetées ou piquées |
| <input type="checkbox"/> Coloured maps/
Cartes géographiques en couleur | <input type="checkbox"/> Pages detached/
Pages détachées |
| <input type="checkbox"/> Coloured ink (i.e. other than blue or black)/
Encre de couleur (i.e. autre que bleue ou noire) | <input checked="" type="checkbox"/> Showthrough/
Transparence |
| <input type="checkbox"/> Coloured plates and/or illustrations/
Planches et/ou illustrations en couleur | <input type="checkbox"/> Quality of print varies/
Qualité inégale de l'impression |
| <input type="checkbox"/> Bound with other material/
Relié avec d'autres documents | <input type="checkbox"/> Includes supplementary material/
Comprend du matériel supplémentaire |
| <input type="checkbox"/> Tight binding may cause shadows or distortion
along interior margin/
La reliure serrée peut causer de l'ombre ou de la
distorsion le long de la marge intérieure | <input type="checkbox"/> Only edition available/
Seule édition disponible |
| <input type="checkbox"/> Blank leaves added during restoration may
appear within the text. Whenever possible, these
have been omitted from filming/
Il se peut que certaines pages blanches ajoutées
lors d'une restauration apparaissent dans le texte,
mais, lorsque cela était possible, ces pages n'ont
pas été filmées. | <input type="checkbox"/> Pages wholly or partially obscured by errata
slips, tissues, etc., have been refilmed to
ensure the best possible image/
Les pages totalement ou partiellement
obscurcies par un feuillet d'errata, une pelure,
etc., ont été filmées à nouveau de façon à
obtenir la meilleure image possible. |
| <input checked="" type="checkbox"/> Additional comments:/
Commentaires supplémentaires: | Pagination is as follows : {153} - 172 p. |

This item is filmed at the reduction ratio checked below/
Ce document est filmé au taux de réduction indiqué ci-dessous.

10X	14X	18X	22X	26X	30X
<input type="checkbox"/>	<input type="checkbox"/>	<input type="checkbox"/>	<input checked="" type="checkbox"/>	<input type="checkbox"/>	<input type="checkbox"/>
12X	16X	20X	24X	28X	32X

The copy filmed here has been reproduced thanks to the generosity of:

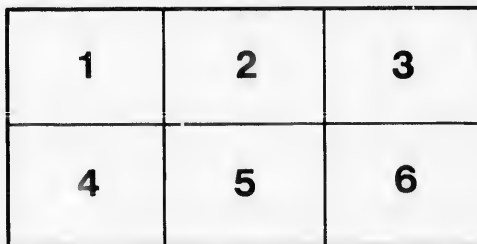
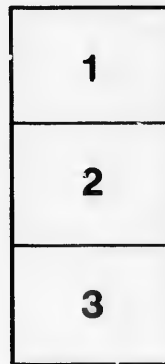
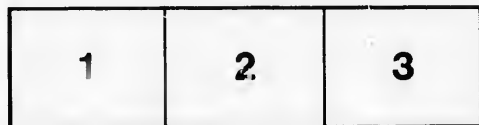
Library,
Geological Survey of Canada

The images appearing here are the best quality possible considering the condition and legibility of the original copy and in keeping with the filming contract specifications.

Original copies in printed paper covers are filmed beginning with the front cover and ending on the last page with a printed or illustrated impression, or the back cover when appropriate. All other original copies are filmed beginning on the first page with a printed or illustrated impression, and ending on the last page with a printed or illustrated impression.

The last recorded frame on each microfiche shall contain the symbol \rightarrow (meaning "CONTINUED"), or the symbol ∇ (meaning "END"), whichever applies.

Maps, plates, charts, etc., may be filmed at different reduction ratios. Those too large to be entirely included in one exposure are filmed beginning in the upper left hand corner, left to right and top to bottom, as many frames as required. The following diagrams illustrate the method:



L'exemplaire filmé fut reproduit grâce à la générosité de:

Bibliothèque,
Commission Géologique du Canada

Les images suivantes ont été reproduites avec le plus grand soin, compte tenu de la condition et de la netteté de l'exemplaire filmé, et en conformité avec les conditions du contrat de filmage.

Les exemplaires originaux dont la couverture en papier est imprimée sont filmés en commençant par le premier plat et en terminant soit par la dernière page qui comporte une empreinte d'impression ou d'illustration, soit par le second plat, selon le cas. Tous les autres exemplaires originaux sont filmés en commençant par la première page qui comporte une empreinte d'impression ou d'illustration et en terminant par la dernière page qui comporte une telle empreinte.

Un des symboles suivants apparaîtra sur la dernière image de chaque microfiche, selon le cas: le symbole \rightarrow signifie "A SUIVRE", le symbole ∇ signifie "FIN".

Les cartes, planches, tableaux, etc., peuvent être filmés à des taux de réduction différents. Lorsque le document est trop grand pour être reproduit en un seul cliché, il est filmé à partir de l'angle supérieur gauche, de gauche à droite, et de haut en bas, en prenant le nombre d'images nécessaire. Les diagrammes suivants illustrent la méthode.

Lambe, L. M.

UCH
.LRR

Reprinted from THE OTTAWA NATURALIST, Vol. XIV, No. 9,
pp. 153-172, December, 1900. Ottawa, Canada.

CATALOGUE
OF THE
RECENT MARINE SPONGES
OF
CANADA AND ALASKA

BY
LAWRENCE M. LAMBE, F.G.S.



Ex. THE OTTAWA NATURALIST, Vol. XIV, No. 9, pp. 153-172,
December, 1900, Ottawa, Canada.

CATALOGUE OF THE RECENT MARINE SPONGES OF CANADA AND ALASKA.

By LAWRENCE M. LAMBE, F.G.S.

For convenience of reference, the names of the species of recent marine sponges referred to or described in a number of papers by the writer, published in the Transactions of the Royal Society of Canada, at various dates since 1892, are here brought together in the form of a catalogue. Although the species enumerated are for the most part to be found in Canadian waters, a number are mentioned that occur outside of this limit. In the west, localities are given as far south as California, and some of the more northern forms are recorded from the Alaskan Arctic, with frequent reference to Behring Sea and North Pacific species. In the east, species from off the western coast of Greenland are considered to be from Canadian waters. The Canadian and foreign distribution of each species is given, although in the latter case a complete statement of the geographical range outside of Canada is not always attempted. It is thought desirable to state where the type, or specimens used in the description, of species that have been described as new, were collected and where they are now to be found.

A bibliographical index is appended as well as the names of a number of species, recorded by different authors as occurring off the coast of Greenland and in Behring Sea and Strait.

An asterisk placed before the name of a species denotes that that species is not represented in the collection of the Geological Survey.

The numbers in heavy type refer to the Bibliographical Index.

I. MONAXONIDA.

1. HALICHONDRIA PANICEA, Johnston. 1842. (14)
Distribution—River and Gulf of St. Lawrence (37); coast of New England (33); Vancouver Island; Queen Charlotte Islands and Behring Sea. (15, 16, 17, 18)
Foreign distribution—Coasts of Great Britain (Johnston, Bowerbank); Basse Rocks, off southeast coast of Ceylon (Carter); Kerguelen Island (Carter, Challenger); Torres Strait (Ridley "Alert"); Japan (Challenger); coasts of Norway, Sweden, Novaya Zemlya and western Greenland (Fristedt).
2. HALICHONDRIA DISPARILIS, Lambe. 1893.
 Described in Transactions, Royal Society of Canada, vol. XI, p. 25, pl. ii, figs. 1, 1a; type in the museum of the Geological Survey of Canada.
Type locality—Gulf of Georgia, near Comox, Vancouver Island, B.C.
3. EUMASTIA SITIENS, O. Schmidt. 1870. (26)
Distribution—River and Gulf of St. Lawrence and coast of Nova Scotia; Greenland; North Pacific Ocean and Behring Sea. (17, 18)
Foreign distribution—Pitlekai, eastern Siberia (Fristedt).
 Schmidt's specimens are from Greenland.
4. PETROSIA HISPIDA, Ridley and Dendy. 1886. (23)
Locality—Middleton Island, Gulf of Alaska (17).
Foreign locality—Royal Sound, Kerguelen Island (Challenger).
5. RENIERA CINEREA, Grant. 1827.
Locality—Blunden Harbour, B.C. (16).
Foreign distribution—Coasts of Great Britain (Grant, Bowerbank); Philippine Islands (Challenger); Spitzbergen (Fristedt).
6. RENIERA RUFESCENS, Lambe. 1892.
 Described in Transactions, Royal Society of Canada, vol. X, p. 75, pl. iv, fig. 6, and pl. v, figs. 12, 12a; type in the museum of the Geological Survey of Canada.
Type locality—Petropaulowski, Kamtschatka.
Distribution—Arctic Ocean (Kotzebue Sound), Behring Sea and North Pacific Ocean; Gaspé coast and Orphan Bank, off the entrance to the Baie des Chaleurs, Gulf of St. Lawrence. (15, 17, 18)

7. *RENIERA MOLLIS*, Lambe. 1893.

Described in Transactions, Royal Society of Canada, vol. XI, p. 26, pl. ii, figs. 3, 3a; type specimen in the museum of the Geological Survey of Canada.

Type locality—Elk Bay, Discovery Passage, Vancouver Island, B.C.

Distribution—Vancouver Island; coast of Labrador, Orphan Bank, off the entrance to the Baie des Chaleurs, and Hudson Bay. (16, 18, 20, 21).

8. *CHALINA OCOLATA*, Pallas. 1766.

Distribution—River and Gulf of St. Lawrence (37), coast of Nova Scotia (18); New England coast (Verrill, 33).

Foreign distribution—Between England and Belgium (Pallas); Northumberland coast and Firth of Forth (Johnston); coast of England (Bowerbank).

9. *GELLIUS ARCOFERUS*, Vosmaer. 1885. (35)

Distribution—Gulf of St. Lawrence (18); Greenland (Fristedt, 12).

Foreign distribution—Barents Sea (Vosmaer); Siberian Arctic Ocean (Fristedt).

10. *GELLIUS FLAGELLIFER*, Ridley and Dendy. 1886. (23)

Distribution—Gulf of St. Lawrence (18).

Foreign locality—Off Marion Island (Challenger).

11. *GELLIUS LAURENTINUS*, Lambe. 1900.

Described in Transactions, Royal Society of Canada, second series, vol. VI, p. 20, pl. i, figs. 1, 1a; type material in the museums of University College, Dundee, Scotland, and of the Geological Survey of Canada.

Distribution—Gulf of St. Lawrence; Davis Strait.

12. *TOXOCHALINA BOREALIS*, Lambe. 1894.

Described in Transactions, Royal Society of Canada, vol. XII, p. 115, pl. ii, figs. 2, 2a-e; type material in U. S. National Museum at Washington, D.C., and in the museum of the Geological Survey of Canada.

Type locality—Kyska Harbour, Kyska Island, Aleutian Islands.

13. *TEDANIA FRAGILIS*, Lambe. 1894.

Described in Transactions, Royal Society of Canada, vol. XII, p. 116, pl. ii, figs. 3, 3a-c; type specimen in U. S. National Museum at Washington, D.C., and authentically named examples in the museum of the Geological Survey of Canada.

- Distribution*—Amakrak Island (type locality), Aleutian Islands; Sooke, Vancouver Island, B.C.
14. **DESMACELLA PEACHII**, var. **GRÆNLANDICA**, Fristedt, 1887. (12)
Locality—Between Anticosti and the Gaspé Peninsula, Gulf of St. Lawrence (18).
Foreign locality—East coast of Greenland (Fristedt).
15. **DESMACELLA PENNATA**, Lambe 1894.
 Described in Transactions, Royal Society of Canada, vol. XII, p. 129, pl. iv, figs. 6, 6a—d; type specimen in the museum of the Geological Survey of Canada.
Type locality—Sooke, Vancouver Island, B.C.
16. **ESPERELLA LINGUA**, Bowerbank. (Sp.) 1866. (1)
Distribution—Gulf of St. Lawrence (18); northeast coast of the United States (Verrill, 33); Greenland (Fristedt); Adak Island, Aleutian Islands (17).
Foreign distribution—Western Islands, Outer Skerries and Unst, Scotland (Bowerbank); off northern coast of Norway (Vosmaer).
17. **ESPERELLA SERRATOHAMATA**, Carter. (Sp.) 1880.
Locality—Sooke, Vancouver Island, B.C. (17).
Foreign locality—Gulf of Manaar, India, (Carter, 7) and (?) Korea Strait (*Esperella macrosigma*, Lindgren, 39).
18. **ESPERELLA HELIOS**, Fristedt. (Sp.) 1887.
Distribution—Alaskan Arctic Ocean; Behring Strait and Behring Sea.
Type locality—Pitlikai (Fristedt).
19. **ESPERELLA HISPIDA**, Lambe. 1893.
 Described in Transactions, Royal Society of Canada, vol. XI, p. 27, pl. ii, figs. 4, 4a—c; type specimen in the museum of the Geological Survey of Canada.
Type locality—Near Suquash, off Pulteney Point, Queen Charlotte Sound, Vancouver Island, B.C.
20. **ESPERELLA ADHÆRENS**, Lambe. 1893.
 Described in Transactions, Royal Society of Canada, vol. XI, p. 27, pl. ii, figs. 5, 5a—d; type in the museum of the Geological Survey of Canada.
Type locality—Elk Bay, Discovery Passage, Vancouver Island, B.C.
Distribution—Vancouver Island, North Pacific Ocean and Behring Sea (16, 17).

21. *ESPERELLA OCCIDENTALIS*, Lambe. 1893.
 Described in Transactions, Royal Society of Canada, vol. XI, p. 28, pl. ii, figs. 6, 6a-e; type in museum of the Geological Survey of Canada.
Type locality—Gulf of Georgia, near Comox, Vancouver Island, B.C.
22. *ESPERELLA MODESTA*, Lambe. 1894.
 Described in Transactions, Royal Society of Canada, vol. XII, p. 118, pl. iii, figs. 1, 1a-d; type material in the U. S. National Museum at Washington, D.C., and in the museum of the Geological Survey of Canada.
Localities from which material was first examined—Chika Island, Akutan Pass; Simeonof Island, Shumagin Islands.
Distribution—Behring Sea and North Pacific Ocean; Gaspé coast, Gulf of St. Lawrence (18).
23. *ESPERELLA FRISTEDTII*, Lambe, 1900.
 Described in Transactions, Royal Society of Canada, second series, vol. VI, p. 21, pl. i, figs. 2, 2a-h; specimens in the U. S. National Museum at Washington, D.C. and in the museum of the Geological Survey of Canada.
Distribution—Davis Strait.
Foreign locality—West from ? (Fristedt); the specimen from this locality was referred to as species *Esperia cupressiformis* (12, p. 457).
24. *ESPERELLA MINUTA*, Lambe. 1900.
 Described in Transactions, Royal Society of Canada, second series, vol. VI, p. 23, pl. i, figs. 3, 3a-c; type in the U. S. National Museum at Washington, D.C.
Type locality—Davis Strait, off Cape Wild.
25. *ESPERIOPSIS RIGIDA*, Lambe. 1892.
 Described in Transactions, Royal Society of Canada, vol. X, p. 68, pl. iii, fig. 4, and pl. v, figs. 3, 3a-g; type in museum of the Geological Survey of Canada.
Type locality—Entrance to Malaspina Inlet, B.C.
26. *ESPERIOPSIS VANCOUVERENSIS*, Lambe. 1892.
 Described in Transactions, Royal Society of Canada, vol. X, p. 68, pl. iii, fig. 5, and pl. v, figs. 4, 4a-d; type specimen in museum of the Geological Survey of Canada.
Type locality—West coast of Vancouver Island, B.C., north of Quatsino Sound.

27. *ESPERIOPSIS QUATSINOENSIS*, Lambe. 1892.
 Described in Transactions, Royal Society of Canada, vol. X, p. 69, pl. iii, figs. 8, 9, and pl. v, figs. 8, 8a, 8b, 8c; types in museum of the Geological Survey of Canada.
Type localities—West coast of Vancouver Island, B.C., north of Quatsino Sound, and near Lasqueti Island, Strait of Georgia.
Distribution—Behring Sea and North Pacific Ocean as far south as the State of Washington.
28. *ESPERIOPSIS LAXA*, Lambe. 1892.
 Described in Transactions, Royal Society of Canada, vol. X, p. 70, pl. iii, fig. 10, and pl. v, figs. 13, 13', 13'', 13c; type in museum of the Geological Survey of Canada.
Type locality—Oyster Bay, Vancouver Island, B.C.
29. *CLADORHIZA ABYSSICOLA*, M. Sars. 1872.
Distribution—Between Anticosti and the Gaspé Peninsula, Gulf of St. Lawrence (Whiteaves, 37); coast of New England (Verrill, 33); Baffin Bay (Fristedt, 12).
Foreign distribution—Coast of Norway (Sars, 25); between the north coast of Scotland and the Faroe Islands (Carter).
30. *CLADORHIZA GRANDIS*, Verrill. 1879. (? syn. *C. NOBILIS*, Fristedt. 1887.)
Distribution—Off the coast of Nova Scotia (Verrill, 32); eastern coast of Greenland (Fristedt).
31. *CLADORHIZA NORDENSKIOLDII*, Fristedt. 1887.
Locality—Between Anticosti and the Gaspé Peninsula, Gulf of St. Lawrence (18).
 Fristedt's type specimen is from the east coast of Greenland.
32. *CHONDROCLADIA ALASKENSIS*, Lambe. 1894.
 Described in Transactions, Royal Society of Canada, vol. XII, p. 119, pl. ii, figs. 7, 7a-c; type material in the U. S. National Museum at Washington, D.C., and in the museum of the Geological Survey of Canada.
Distribution—Behring Sea and North Pacific Ocean.
33. *CHONDROCLADIA PULCHRA*, Lambe. 1894.
 Described in Transactions, Royal Society of Canada, vol. XII, p. 119, pl. ii, figs. 8, 8a-d; type material in the U. S. National Museum at Washington, D.C. and in the museum of the Geological Survey of Canada.

Distribution—Aleutian Islands.

34. **DESMACIDON (HOMEOIDICTYA) PALMATA**, Johnston. 1842.
Distribution—Nova Scotia and northeast coast of the United States (18, 33).
Foreign distribution—Coasts of England and Scotland (Johnston and Bowerbank).
35. **IOPHON CHELIFER**, Ridley and Dendy. 1886.
Distribution—Vancouver Island, B.C., (16); Gulf of St. Lawrence (18); Davis Strait (21).
Foreign distribution—Off the Cape of Good Hope, off Prince Edward Island (lat. 46° 41' S., long. 38° 10' E.) and off Crozet Island (Challenger).
36. ***IOTROCHOTA MAGNA**, Lambe. 1894.
Described in Transactions, Royal Society of Canada, vol. XII, p. 120, pl. iii, figs. 2, 2a—d; type in the U. S. National Museum at Washington, D.C.
Localities from which material was examined—Kyska Island and Nagai Island, North Pacific Ocean.
37. **MYXILLA INCRUSTANS**, Johnston. 1842.
Distribution—Gaspé coast, Gulf of St. Lawrence (18).
Foreign distribution—Coast of Great Britain (Johnston, Bowerbank).
38. **MYXILLA BARENTSI**, Vosmaer. 1885.
Distribution—Alaskan Arctic Ocean, Behring Sea, and North Pacific Ocean as far south as Vancouver Island (17).
Foreign distribution—Arctic Sea (Vosmaer, 35).
39. **MYXILLA LACUNOSA**, Lambe. 1892.
Described in Transactions, Royal Society of Canada, vol. X, p. 70, pl. iii, fig. 3, and pl. v, figs. 5, 5a—g; type specimen in the museum of the Geological Survey of Canada.
Type locality—West coast of Vancouver Island, B.C., north of Quatsino Sound.
40. **MYXILLA ROSACEA**, Lieberkühn, var. 1892.
Described in Transactions, Royal Society of Canada, vol. X, p. 71, pl. iii, fig. 6, and pl. v, figs. 6, 6a, 6b—f; specimen in the museum of the Geological Survey of Canada.
Locality—Oyster Bay, Vancouver Island, B.C.

41. *MYXILLA PARASITICA*, Lambe. 1893.
Described in Transactions, Royal Society of Canada, vol. XI, p. 31, pl. ii, figs. 8, 8a-f; specimens in the museum of the Geological Survey of Canada.
Distribution—Vancouver Island, B.C.
42. *MYXILLA BEHRINGENSIS*, Lambe. 1894.
Described in Transactions, Royal Society of Canada, vol. XII, p. 121, pl. iii, figs. 3, 3a-f; type material in the U. S. National Museum at Washington, D.C., and in the museum of the Geological Survey of Canada.
Distribution—Behring Sea and North Pacific Ocean.
43. *MYXILLA AMAKNAKENSIS*, Lambe, 1894.
Described in Transactions, Royal Society of Canada, vol. XII, p. 122, pl. ii, figs. 10, 10a-e; type material in the U. S. National Museum at Washington, D.C., and in the museum of the Geological Survey of Canada.
Distribution—Behring Sea and North Pacific Ocean as far south as Vancouver Island, B.C.
44. *MYXILLA FIRMA*, Lambe. 1894.
Described in Transactions, Royal Society of Canada, vol. XII, p. 122, pl. iii, figs. 4, 4a-f; type material in the U. S. National Museum at Washington, D.C., and in the museum of the Geological Survey of Canada.
Distribution—Kyska Island (North Pacific Ocean) and Vancouver Island, B.C.
45. *CLATHRIA LOVENI*, Fristedt. 1887.
Localities—Chika Island, Akutan Pass; Unalaska Island (17).
Type locality—Cape Yakan (Fristedt).
46. *CLATHRIA LÆVIGATA*, Lambe. 1893.
Described in Transactions, Royal Society of Canada, vol. XI, p. 31, pl. ii, figs. 9, 9a-f; type specimen in the museum of the Geological Survey of Canada.
Type locality—Near Comox, Vancouver Island, B.C.
47. *CLATHRIA DELICATA*, Lambe. 1896.
Described in Transactions, Royal Society of Canada, second series, vol. II, p. 192, pl. ii, figs. 2, 2a-l; type specimen in the museum of the Geological Survey of Canada.

Distribution—Coast of Nova Scotia.

There are two specimens from Portland, Maine, in the Peter Redpath Museum, McGill University, Montreal.

48. *PLOCAMIA MANAARENSIS, Carter. 1880.

One specimen, from coast of California, in the U. S. National Museum at Washington, D.C (17).

Carter's type is from the Gulf of Manaar (7).

49. PHAKELLIA VENTILABRUM, Johnston. 1842.

Distribution—River and Gulf of St. Lawrence (37), Hudson Bay (20), Davis Strait and the northeast coast of the United States (33); North Pacific Ocean, Behring Sea and the Alaskan Arctic Ocean.

Foreign distribution—British Seas (Bowerbank, Johnston, &c.); Ireland, (Johnston); Shetlands (Bowerbank); between Scotland and Faroe Islands (Carter); southwest coast of Norway (Schmidt); Arctic Ocean, off Norway (Vosmaer); Baltic Sea (Fristedt); Florida, Gulf of Mexico, and Barbadoes (Schmidt); off Brazil and northeast coast of Falkland Islands (Challenger).

50. *PHAKELLIA DALLI, Lambe. 1894.

Described in Transactions, Royal Society of Canada, vol. XII, p. 125, pl. iii, figs. 5, 5a—d; type specimen in the U.S. National Museum at Washington, D.C.

Type locality—Chika Island, Alaska.

51. AXINELLA RUGOSA, Bowerbank. (Sp.) 1866.

Distribution.—Chika Island and Unalaska Island, Alaska (17); Greenland (Fristedt 12).

Foreign distribution.—Orkney and Shetland Islands (Bowerbank).

52. SUBERITES SUBEREA, Johnston, 1842.

Distribution—Vancouver Island, North Pacific Ocean, and Behring Sea (17); New England coast (Verrill, 33).

Foreign distribution.—Coasts of British Isles (Bowerbank).

53. SUBERITES FICUS, Johnston. 1842.

Locality—Sable Island, off the coast of Nova Scotia (specimens in the Peter Redpath Museum, McGill University, Montreal, 18).

Foreign distribution.—Coasts of Great Britain (Johnston and Bowerbank).

54. SUBERITES HISPIDUS, Bowerbank. 1864.

Described in Canadian Naturalist, second series, vol. I, p. 304; type

specimen in the Peter Redpath Museum, McGill University, Montreal; one specimen in the museum of the Geological Survey of Canada.

Localities—Portland, Maine (type locality), and off the coast of Anticosti, Gulf of St. Lawrence (18); New England coast (Verrill, 33).

55. SUBERITES MONTALBIDUS, Carter. 1880. (8)

Localities—Unalaska Island, Alaska, 17 (one specimen in the U. S. National Museum at Washington, D.C.) and Richmond Gulf, Hudson Bay, 20 (one specimen in the museum of the Geological Survey of Canada).

Distribution—Behring Sea and Strait, Beaufort Sea, the Siberian Arctic Ocean, the Kara Sea, the European Arctic Ocean, Barents Sea (type specimen from near the southwest end of Novaya Zemlya) and the west and east coasts of Greenland.

56. *SUBERITES MONTINIGER, Carter. 1880, (8)

Locality—Granite Cove, Port Althrop, Cross Sound, Alaska (one specimen in the U. S. National Museum at Washington, D.C.).

Type locality—Barents Sea from the southwest end of Novaya Zemlya, in lat. 71° 6' N., long. 50° E.

57. SUBERITES SIMPLEX, Lambe. 1893.

Described in Transactions, Royal Society of Canada, vol. XI, p. 32, pl. iv, figs. 4, 4a; type specimen in the museum of the Geological Survey of Canada.

Type locality—Gulf of Georgia, near Comox, Vancouver Island, B.C.

58. SUBERITES PACIFICA, Lambe. 1893.

Described in Transactions, Royal Society of Canada, vol. XI, p. 32, pl. ii, figs. 10, 10a—d; type specimen in the museum of the Geological Survey of Canada.

Type locality—Gulf of Georgia, near Comox, Vancouver Island, B.C.

59. SUBERITES CONCINNUS, Lambe. 1894.

Described in Transactions, Royal Society of Canada, vol. XII, p. 128, pl. ii, figs. 12, 12a; type material in the U. S. National Museum at Washington, D.C., and in the museum of the Geological Survey of Canada.

Distribution—North Pacific Ocean, Behring Sea and Alaskan Arctic Ocean.

60. POLYMASTIA MAMMILLARIS, Johnston. (Sp.) 1842.

Distribution—Gulf of St. Lawrence (37, 18) and off the coast of Nova Scotia (24); northeast coast of United States.

This species has a wide geographical range. According to Topsent (38, p. 135) it is found, outside of Canadian waters, in the Arctic Ocean (Kara Sea, White Sea, Spitzbergen, Greenland, &c.); in the North Atlantic (coasts of Norway, Belgium, British Isles, France, Spain); in the Mediterranean (coast of France, Naples, Adriatic); Pacific Ocean (Amboina Island, Japan).

61. *POLYMASTIA ROBUSTA*, Bowerbank. 1860.

Distribution—Gulf of St. Lawrence (18); off the coast of Nova Scotia (24); northeast coast of United States (Verrill, 33).

Foreign distribution—British Isles (Bowerbank, Norman, Hanitsch); North Sea, Shetland Islands (Norman); entrance to the Baltic (Levisen); French coast of the English Channel and of the Atlantic (Topsent).

62. *POLYMASTIA LAGANOIDES*, Lambe. 1894.

Described in Transactions, Royal Society of Canada, vol. XI, p. 129, pl. iv, figs. 5, 5a—c; type in the U. S. National Museum at Washington, D.C.; part of the type specimen in the museum of the Geological Survey of Canada.

Type locality—Behring Island, Behring Sea.

63. *TRICHOSTEMMA HEMISPHERICUM*, M. Sars. 1872.

Distribution—Gulf of St. Lawrence (Whiteaves, 37) 18; northeast coast of the United States (Verrill, 33).

Foreign distribution—Lofoten, Norway (Sars); Arctic Ocean, off the coast of Norway (Vosmaer).

64. *TENTORIUM SEMISUBERITES*, Schmidt. (Sp.) 1870. (26)

Distribution—Gulf of St. Lawrence (Whiteaves, 37); off Nova Scotia (Challenger); Baffin Bay, Omenak Bay, west and east coast of Greenland (Fristedt); Davis Strait and East Greenland (Lambe, 21); Greenland (Schmidt); northeast coast of United States (Verrill, 33).

Foreign distribution—Off the Shetland Islands (Wyville Thompson); Arctic Ocean off the coast of Norway (Vosmaer); Inaccessible Island, South Atlantic Ocean (Challenger).

65. *STYLOCORDYLA BOREALIS*, Lovén. (Sp.) 1868. (22)

Distribution—Gulf of St. Lawrence (Whiteaves, 37); south of Halifax, Nova Scotia (Challenger); northeast coast of the United States (Verrill, 33).

Foreign distribution—North Sea and coast of Finmark (Lovén); off the coast of Finmark (Vosmaer); Lofoten, Norway (Sars); between the north of Scotland and the Faroe Islands (Wyville Thompson, Carter);

off Bahia, Brazil, and between Marion and Crozet islands, South Indian Ocean (Challenger).

66. *CLIONA CELATA*, Grant. 1826.

Locality—North shore of Prince Edward Island, Gulf of St. Lawrence (18); New England coast (Verrill, 33).

Foreign distribution—Coasts of Great Britain (Bowerbank); Norway, Denmark, Belgium, France; Mediterranean—France, Naples, Adriatic (Topsent); Florida; South of Australia (Carter, Dendy); New Guinea (Ridley and Dendy).

II. TETRACTINELLIDA.

67. *CRANIELLA CRANIUM*, Müller. (Sp.) 1798.

Distribution—Richmond Gulf, Hudson Bay (20); Greenland (Fristedt).

Foreign distribution—The Island of Arran, Galway, Ireland (Bowerbank); The Minch, Scotland (Norman); between the Faroe Isles and the North of Scotland (Carter); Shetland Islands (Bowerbank); Kors Fjord, Norway (Norman, Sollas); lat. 61° 0' N., long. 4° 49' E. and lat. 72° 53' N., long. 21° 51' E. (Hansen); near last mentioned locality (Vosmaer).

68. *CRANIELLA VILLOSA*, Lambe. 1893.

Described in Transactions, Royal Society of Canada, vol. XI, p. 34, pl. iii, figs. 1, 1a-f; type specimen in the museum of the Geological Survey of Canada.

Type locality—Houston Stewart Channel, Queen Charlotte Islands, B.C.

69. *CRANIELLA SPINOSA*, Lambe. 1893.

Described in Transactions, Royal Society of Canada, vol. XI, p. 35, pl. iv, figs. 1, 1a-j; type specimen in the museum of the Geological Survey of Canada.

Localities from which material was examined—Elk Bay, Discovery Passage and Gulf of Georgia, near Comox, Vancouver Island, B.C.

70. *THENEA MURICATA*, Bowerbank. (Sp.) 1858.

Distribution—Gulf of St. Lawrence (Whiteaves, 37); northeast coast of the United States (Verrill, 33); Baffin Bay, Davis Strait and east coast of Greenland (Fristedt); east coast of Greenland (Lambe, 21).

This species is known to range through the Arctic and North Atlantic oceans, from about lat. 42° to 75° N., and from long. 60° W. to 32° E.

71. *CYDONIUM MULLERI*, Fleming. 1828.

Distribution—Vancouver Island and Queen Charlotte Islands.

Type locality—Island of Fulañ and Unst (Shetland Islands).

According to Vosmaer (35, p. 6) the geographical distribution of this species is "Atlantic (Shetland, Iceland, Florida) and Arctic Oceans."

III. HEXACTINELLIDA.

72. RHABDOCALYPTUS DAWSONI, Lambe. (Sp.) 1892.

Described in Transactions, Royal Society of Canada, vol. X, p. 73, pl. iv, fig. 2, and pl. vi, figs. 2, 2', 2a, 2a', 2b, 2b', 2c, 2d--i, 2k; type in the museum of the Geological Survey of Canada.

Localities—Off mouth of Qualicum River (type specimen) and Strait of Georgia near Comox, Vancouver Island, B.C.

This species referred to 13, p. 54.

73. APHROCALLISTES WHITEAVESIANUS, Lambe. 1892.

Described in Transactions, Royal Society of Canada, vol. X, p. 74, pl. iii, fig. 2, and pl. vi, figs. 3, 3a--n, 3p; type specimen in the museum of the Geological Survey of Canada.

Type locality—Strait of Georgia near Comox, Vancouver Island, B.C.

74. STAUROCALYPTUS DOWLINGII, Lambe. (Sp.) 1893.

Described in Transactions, Royal Society of Canada, vol. xi, p. 37, pl. iii, figs. 2, 2a--h; type in the museum of the Geological Survey of Canada.

Type locality—Strait of Georgia, near Comox, Vancouver Island.

Foreign locality—Sagami Sea, Japan (Ijima, 13).

IV. CALCAREA.

75. LEUCOSOLENIA CANCELLATA, Verrill. 1874 (13).

Distribution—Gulf of St. Lawrence (Whiteaves); Strait of Belle Isle (Lambe); northeast coast of the United States (Verrill, 33); Davis Strait (Lambe).

76. SYCON COMPACTUM, Lambe. 1893.

Described in Transactions, Royal Society of Canada, vol. XI, p. 38, pl. iv, figs. 3, 3a--f; type in the museum of the Geological Survey of Canada.

Type locality—Elk Bay, Discovery Passage, Vancouver Island, B.C.

77. SYCON PROTECTUM, Lambe. 1896.

Described in Transactions, Royal Society of Canada, second series, vol. II, p. 204, pl. iii, figs. 6, 6a--g; type in the museum of the Geological Survey of Canada.

Distribution—Off Bonaventure Island, Baie des Chaleurs (type locality); Strait of Belle Isle, and Upernavik, Baffin Bay (Lambe); near Nanaimo, Vancouver Island (Lambe).

78. SYCON ASPERUM, Lambe. 1896.

Described in Transactions, Royal Society of Canada, second series, vol. II, p. 205, pl. ii, figs. 8, 8a-c; type in the museum of the Geological Survey of Canada.

Type locality—Off Bonaventure Island, Baie des Chaleurs, Gulf of St. Lawrence.

79. SYCON MUNDULUM, Lambe. 1900.

Described in Transactions, Royal Society of Canada, second series, vol. VI, p. 28, pl. iii, figs. 7, 7a-e; of two specimens, one (the type) is in the museum of University College, Dundee, Scotland, the other in the museum of the Geological Survey of Canada.

Distribution—Exeter Harbour (type locality) and off Cape Raper. Davis Strait.

80. *SYCON EGLINTONENSIS, Lambe. 1900.

Described in Transactions, Royal Society of Canada, second series, vol. VI, p. 29, pl. ii, figs. 6, 6a-e; type in the museum of University College, Dundee, Scotland.

Type locality—Eglinton Harbour, Davis Strait.

81. GRANTIA COMOXENSIS, Lambe. 1893.

Described in Transactions, Royal Society of Canada, vol. XI, p. 39, pl. iii, figs. 3, 3a-c; type in museum of the Geological Survey of Canada.

Type locality—Strait of Georgia, near Comox, Vancouver Island, B.C.

82. GRANTIA CANADENSIS, Lambe. 1896.

Described in Transactions, Royal Society of Canada, second series, vol. II, p. 206, pl. iii, figs. 7, 7a-c; two specimens, one (the type) in the museum of the Geological Survey of Canada, a third in the Peter Redpath Museum, McGill University, Montreal.

Distribution—Between Pictou Island and Cape Bear (type locality); off Bonaventure Island; Little Metis. Gulf of St. Lawrence.

83. GRANTIA MONSTRUOSA, Breitfuss. 1898.

Described in Memoires de l'Académie des Sciences de St. Pétersbourg, eighth series, vol. VI, No. 2, p. 24, pl. ii, fig. 16, and pl. iii, fig. 19; type specimen from the North Polar Sea off the coast of Russia.

Specimens in the U. S. National Museum at Washington, D.C., and one in the museum of the Geological Survey of Canada, from Copper Island, Commander Islands, Behring Sea.

84. *GRANTIA PHILLIPSII, Lambe. 1900.

Described in Transactions, Royal Society of Canada, second series, vol. VI, p. 30, pl. iv, figs. 9, 9a-i; type in museum of University College, Dundee, Scotland.

Type locality—Cape Aston, Davis Strait.

85. *GRANTIA INVENUSTA, Lambe. 1900.

Described in Transactions, Royal Society of Canada, second series, vol. VI, p. 32, pl. vi, figs. 14, 14a-f; type in the museum of University College, Dundee, Scotland.

Type locality—Off Cape Raper, Davis Strait.

86. LEUCONIA PYRIFORMIS, Lambe. 1893.

Described in Transactions, Royal Society of Canada, vol. XI, p. 40, pl. iii, figs. 4, 4a-d; type in the museum of the Geological Survey of Canada.

Type locality—Strait of Georgia, near Comox, Vancouver Island, B.C.

87. LEUCANDRA VALIDA, Lambe. 1900.

Described in Transactions, Royal Society of Canada, second series, vol. VI, p. 32, pl. iv, figs. 10, 10a-e, and pl. v, figs. 11, 11a-e; of two specimens, one (the type) in the museum of University College, Dundee, Scotland, the other in the museum of the Geological Survey of Canada.

Type locality—Exeter Harbour, Davis Strait.

88. LEUCANDRA CUMBERLANDENSIS, Lambe. 1900.

Described in Transactions, Royal Society of Canada, second series, vol. VI, p. 34, pl. v, figs. 12, 12a-j; type specimen in the museum of University College, Dundee, Scotland, one specimen (co-type) in the museum of the Geological Survey of Canada.

Localities—Cumberland Sound, Kingawa Fjord; off Cape Raper, Davis Strait.

89. LEUCANDRA TAYLORI, Lambe. 1900.

Described in Transactions, Ottawa Naturalist, vol. XIII, p. 261, pl. vi, figs. a-i; type in the collection of the Rev. George W. Taylor, Nanaimo, B.C.; one specimen (co-type) in the museum of the Geological Survey of Canada.

Type locality—Boat Harbour, near Nanaimo, Vancouver Island, B.C.

90. HETEROPIA RODGERI, Lambe, 1900.

Described in Transactions, Royal Society of Canada, second series, vol. VI, p. 35, pl. vi, figs. 13, 13a-g; type specimen in the museum of University College, Dundee, Scotland, one specimen (co-type) in the museum of the Geological Survey of Canada.

Type locality—Off Norman's Light, Strait of Belle Isle, Gulf of St. Lawrence.

91. AMPHORISCUS THOMPSONI, Lambe. 1900.

Described in Transactions, Royal Society of Canada, second series, vol. VI, p. 36, pl. iii, figs. 8, 8a-j; type specimen in the museum of University College, Dundee, Scotland, co-type in the museum of the Geological Survey of Canada.

Type locality—Off Norman's Light, Strait of Belle Isle, Gulf of St. Lawrence.

BIBLIOGRAPHICAL INDEX.

1. BOWERBANK, J. S. List of sponges in McAndrew's "List of British Marine Invertebrate Fauna." Report of British Association for 1860, p. 217. 1861.
2. ——— Description of two American Sponges. Canadian Naturalist, second series, vol. I, p. 304. 1864.
3. ——— A monograph of the British Spongiadæ, vol. I—IV, Ray Society, London, 1864, 1866, 1874, 1882.
4. BREITFUSS, L. L. Kalkschwammfauna des Weissen Meers und der Eis-meerküsten des Europäischen Russlands. Mémoires de l'Académie Impériale des Sciences de St. Pétersbourg, serie VIII, vol. VI. 1898.
5. CARTER, H. J. Descriptions and Figures of Deep-sea Sponges and their Spicules from the Atlantic Ocean, dredged up on board H.M.S. "Porcupine," chiefly in 1869; with Figures and Descriptions of some remarkable Spicules from the Agulhas Shoal and Colon, Panama. Annals and Magazine of Natural History, fourth series, vol. XIV, pp. 207—221, 245—257. 1874.
6. ——— Descriptions and Figures of Deep-sea Sponges and their Spicules from the Atlantic Ocean, dredged up on board H.M.S. "Porcupine," chiefly in 1869. Annals and Magazine of Natural History, fourth series, vol. XVIII, pp. 226—240, 307—324, 388—410, 458—479. 1876.
7. ——— Report on specimens dredged up from the Gulf of Manar and presented to the Liverpool Free Museum by Capt. W. H. Cawne Warren. Annals and Magazine of Natural History, fifth series, vol. V, pp. 437—457, and vol. VI, pp. 36—61, 129—156. 1880.

8. ——— Descriptions of two new sponges in "The Zoology of Barents Sea," by W. S. M. D'Urban. *Annals and Magazine of Natural History*, fifth series, vol. VI., p. 253. 1880.
9. ——— Supplementary Report on Specimens dredged up from the Gulf of Manaar, together with others from the sea in the vicinity of the Basse Rocks and from Bass's Straits respectively, presented to the Liverpool Free Museum by Capt. W. H. Cawne Warren. *Annals and Magazine of Natural History*, fifth series, vol. VII, pp. 361—385. 1881.
10. ——— Some sponges from the West Indies and Acapulco in the Liverpool Free Museum described, with general and classificatory Remarks. *Annals and Magazine of Natural History*, fifth series, vol. IX, pp. 266—301, 346—368. 1882.
11. ——— New Sponges, Observations on old ones, and a proposed New Group. *Annals and Magazine of Natural History*, fifth series, vol. X, pp. 106—125. 1882.
12. FRISTEDT, K. Sponges from the Atlantic and Arctic oceans, and the Behring Sea (translation). *Vega—expeditionens vetenskapliga arbeten*, bd. iv. 1887.
13. IJIMA, I. The genera and species of Rossellidæ. *Annotationens Zoologicæ Japonenses*, vol. II, pars. ii. 1898.
14. JOHNSTON, G. A history of British Sponges and Lithophytes. 1842.
15. LAMBE, L. M. Sponges from the Pacific coast of Canada and Behring Sea. *Transactions, Royal Society of Canada*, vol. X. 1892.
16. ——— Sponges from the Pacific coast of Canada. *Transactions, Royal Society of Canada*, vol. XI. 1893.
17. ——— Sponges from the Western coast of North America. *Transactions, Royal Society of Canada*, vol. XII. 1894.
18. ——— Sponges from the Atlantic coast of Canada. *Transactions, Royal Society of Canada*, second series, vol. II. 1896.
19. ——— Description of a new species of Calcareous Sponge from Vancouver Island, B.C. *Ottawa Naturalist*, vol. XIII, p. 261. 1900.
20. ——— Notes on Hudson Bay sponges. *Ottawa Naturalist*, vol. XIII, p. 277. 1900.
21. ——— Sponges from the coasts of Northeastern Canada and Greenland. *Transactions, Royal Society of Canada*, second series, vol. VI. 1900.
22. LOVÉN, S. Öfersigt af K. Vetenskaps Akademiens Förhandlingar, Stockholm, 1868, and translated, *Annals and Magazine of Natural History*, fourth series, vol. II. 1868.

23. RIDLEY, S. O. and DENDY, A. Preliminary Report on the Monaxonida collected by H.M.S. "Challenger." *Annals and Magazine of Natural History*, fifth series, vol. XVIII, pp. 325--351, 470-493-1886.
24. ——— Report on the Monaxonida collected by H. M. S. "Challenger" during the years 1873 to 1876: The Voyage of H.M.S. "Challenger," *Zoology*, vol. XX. 1887.
25. SARS, M. On some remarkable forms of animal life from the great deeps off the Norwegian coast (G. O. Sars). 1872.
26. SCHMIDT, O. Grundzüge einer Spongien-Fauna des Atlantischen Gebietes. 1870.
27. SOLLAS, W. J. The Sponge-fauna of Norway; a Report on the Rev. A. M. Norman's Collection of Sponges from the Norwegian Coast. *Annals and Magazine of Natural History*, fifth series, vol. V, pp. 130-144, 241-259 396-409, 1880, and vol. IX, pp. 141-165, 426-453. 1882.
28. ——— Report on the Tetractinellidæ collected by H.M.S. "Challenger" during the years 1873-76: The Voyage of H.M.S. "Challenger," *Zoology*, vol. XXV. 1888.
29. THOMPSON, W. The depths of the Sea. 1873.
30. VERRILL, A. E. Brief Contributions to Zoology, from the Museum of Yale College. Results of recent Dredging Expedition on the coast of New England. *American Journal of Science and Arts*, third series, vol. VI, pp. 435-441, 1873, and vol. VII, pp. 38-46, 131-138, 405-414, 498-505, 1874.
31. ——— Explorations of Casco Bay. *Proceedings of the American Association for the advancement of science*. 1874.
32. ——— Notice of recent additions to the marine invertebrata of the northeastern coast of America, with descriptions of new genera and species, and critical remarks on others. *Proceedings of the United States National Museum*, vol. II, p. 165. 1879.
33. ——— Preliminary check-list of the Marine Invertebrata of the Atlantic Coast, from Cape Cod to the Gulf of St. Lawrence. (Prepared for the U.S. Commission of Fish and Fisheries). 1879.
34. VOSMAER, G. C. J. Report on the sponges dredged up in the Arctic Sea by the "Willem Barents" in the years 1878 and 1879. *Nederland Arch. für Zool.*, supp., bd. I. 1882.
35. ——— The Sponges of the "Willem Barents" expedition, 1880 and 1881. *Bijdragen tot de Lande Natura Artis Magistra*, XII, Amsterdam, 1885.

36. — — Porifera. Bronn's Klassen und Ordnungen des Thierreichs, bd. II. 1887.
37. WHITEAVES, J. F. Report on deep-sea dredging operations in the Gulf of St. Lawrence, in Report of Department of Marine and Fisheries for 1873, Ottawa, 1874, and American Journal of Science and Arts, third series, vol. VII, p. 210. 1874.
38. TOPSENT, E. Étude monographique des Spongiaires de France. III. Monaxonidi (Hadromerina). Arch. de Zool. exp. et gén, 3e série, t. VIII. 1900.
39. LINDGREN, N. G. Beitrag zur Kenntniss der Spongienfauna des Malayischen Archipels und der chinesischen Meere. Zoologischen Jahrbüchern, elfter band. 1898.

The following species according to L. L. Breitfuss (in "Kalkschwamm fauna des Weissens Meeres, &c.") occur in the waters of East Greenland :—

- Leucosolenia coriacea*, Montagu.
 „ *lamarcki*, Hæckel.
Ascandra corallorrhiza, Hæckel.
 „ *fabricii*, O. Schmidt.
 „ *mirabilis*, Fristedt.
 „ *reticulum*, Hæckel.
Sycon ciliatum, Aut. Hæckel).
 „ *raphanus*, O. Schmidt.
Grantia arctica, Hæckel.
 „ *utriculus*, O. Schmidt.
 „ *compressa*, Aut. (Hæckel).
 „ *clavigera*, O. Schmidt.
Amphoriscus glacialis, Hæckel.
Leuconia ananas, Montagu.
 „ *stiiigera*, O. Schmidt.
 „ *egedi*, O. Schmidt.

In his "Catalog der Calcareæ, der Zoologischen Sammlung des Koniglichen Museums für Naturkunde zu Berlin," the same author cites the occurrence of the following species from Greenland :—

- Leucosolenia lamarcki*, (Hæckel). East Greenland.
Ascandra fabricii, (O. Schmidt). West Greenland.
 „ *reticulum*, (O. Schmidt). „ „
Sycon karajakense, Breitfuss. „ „
Grantia arctica, (Hæckel). „ „
 „ *pennigera*, (Hæckel) Breitfuss. Greenland.
 „ *utriculus*, (O. Schmidt). West Greenland.

- Amphoriscus glacialis*, (Hæckel). East Greenland.
Leuconia ananas, (Montagu). West Greenland.
 „ *egedi*, (O. Schmidt). Greenland.

Fristedt in "Sponges from the Atlantic and Arctic Oceans and the Behring Sea," mentions the following sponges from the "Sea west from Greenland"—

- Hyalonema foliata*, Fristedt.
Amorphina panicea, Pallas (O.S.).
Isodictya Dicksonii, Fristedt.
Suberites montalbidus, Carter.
Thecophora semisuberites, O. Schmidt.
Tethya muricata, Bowerbank.
 „ *cranium*, Lamarek.
Desmacella porosa, Fristedt.
Cornulum ascidioides, Fristedt.
 „ *textile*, Carver.
 „ *enteromorphoides*, Fristedt.
Experia lingua, Bowerbank (O.S.).
Cladorhiza abyssicola, Sars.
Clathria corallorhizoides, Fristedt.
Axinella vermiculata, Bow. (Fristedt) var. *erecta*, Carter.

And a number as below from Behring Strait and Sea :—

- Halisarca Dujardinii*, Johnston.
Amorphina renieroides, Fristedt.
 „ *fibrosa*, Fristedt.
Suberites montalbidus, Carter.
Hastatus Robertsoni, Bow. (Fristedt).
Myxilla septentrionalis, Fristedt.
Esperia lingua, Bow. (O.S.) var. *arctica*, Fristedt.

Also the following from Beaufort's Sea :—

- Ascandra complicata*, Montagu (Hæckel).
Leucandra cylindrica, Fristedt.
Cribrochalina variabilis, Vosmaer.
Amorphina grisea, Fristedt.
Eumastia sitiens, O. Schmidt.
Suberites montalbidus, Carter.
Tethya Sibirica, Fristedt.
Esperia helios, Fristedt.

ber

the
om

