



**CIHM/ICMH
Microfiche
Series.**

**CIHM/ICMH
Collection de
microfiches.**



Canadian Institute for Historical Microreproductions / Institut canadien de microreproductions historiques



© 1986

Technical and Bibliographic Notes/Notes techniques et bibliographiques

The Institute has attempted to obtain the best original copy available for filming. Features of this copy which may be bibliographically unique, which may alter any of the images in the reproduction, or which may significantly change the usual method of filming, are checked below.

L'Institut a microfilmé le meilleur exemplaire qu'il lui a été possible de se procurer. Les détails de cet exemplaire qui sont peut-être uniques du point de vue bibliographique, qui peuvent modifier une image reproduite, ou qui peuvent exiger une modification dans la méthode normale de filmage sont indiqués ci-dessous.

- Coloured covers/
Couverture de couleur
- Covers damaged/
Couverture endommagée
- Covers restored and/or laminated/
Couverture restaurée et/ou pelliculée
- Cover title missing/
Le titre de couverture manque
- Coloured maps/
Cartes géographiques en couleur
- Coloured ink (i.e. other than blue or black)/
Encre de couleur (i.e. autre que bleue ou noire)
- Coloured plates and/or illustrations/
Planches et/ou illustrations en couleur
- Bound with other material/
Relié avec d'autres documents
- Tight binding may cause shadows or distortion along interior margin/
La reliure serrée peut causer de l'ombre ou de la distortion le long de la marge intérieure
- Blank leaves added during restoration may appear within the text. Whenever possible, these have been omitted from filming/
Il se peut que certaines pages blanches ajoutées lors d'une restauration apparaissent dans le texte, mais, lorsque cela était possible, ces pages n'ont pas été filmées.
- Additional comments:/
Commentaires supplémentaires:

- Coloured pages/
Pages de couleur
- Pages damaged/
Pages endommagées
- Pages restored and/or laminated/
Pages restaurées et/ou pelliculées
- Pages discoloured, stained or foxed/
Pages décolorées, tachetées ou piquées
- Pages detached/
Pages détachées
- Showthrough/
Transparence
- Quality of print varies/
Qualité inégale de l'impression
- Includes supplementary material/
Comprend du matériel supplémentaire
- Only edition available/
Seule édition disponible
- Pages wholly or partially obscured by errata slips, tissues, etc., have been refilmed to ensure the best possible image/
Les pages totalement ou partiellement obscurcies par un feuillet d'errata, une pelure, etc., ont été filmées à nouveau de façon à obtenir la meilleure image possible.

This item is filmed at the reduction ratio checked below/
Ce document est filmé au taux de réduction indiqué ci-dessous.

10X	14X	18X	22X	26X	30X
<input type="checkbox"/>	<input type="checkbox"/>	<input checked="" type="checkbox"/>	<input type="checkbox"/>	<input type="checkbox"/>	<input type="checkbox"/>
12X	16X	20X	24X	28X	32X

The copy filmed here has been reproduced thanks to the generosity of:

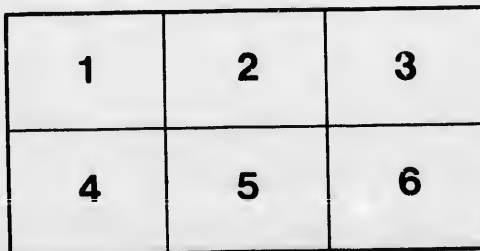
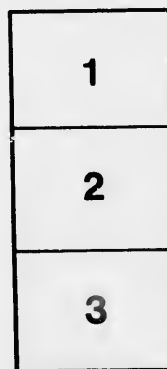
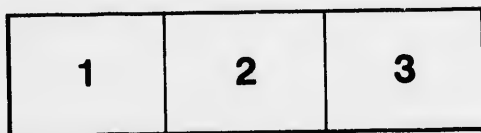
Archives of Ontario Library

The images appearing here are the best quality possible considering the condition and legibility of the original copy and in keeping with the filming contract specifications.

Original copies in printed paper covers are filmed beginning with the front cover and ending on the last page with a printed or illustrated impression, or the back cover when appropriate. All other original copies are filmed beginning on the first page with a printed or illustrated impression, and ending on the last page with a printed or illustrated impression.

The last recorded frame on each microfiche shall contain the symbol \rightarrow (meaning "CONTINUED"), or the symbol ∇ (meaning "END"), whichever applies.

Maps, plates, charts, etc., may be filmed at different reduction ratios. Those too large to be entirely included in one exposure are filmed beginning in the upper left hand corner, left to right and top to bottom, as many frames as required. The following diagrams illustrate the method:



L'exemplaire filmé fut reproduit grâce à la générosité de:

Archives of Ontario Library

Les images suivantes ont été reproduites avec le plus grand soin, compte tenu de la condition et de la netteté de l'exemplaire filmé, et en conformité avec les conditions du contrat de filmage.

Les exemplaires originaux dont la couverture en papier est imprimée sont filmés en commençant par le premier plat et en terminant soit par la dernière page qui comporte une empreinte d'impression ou d'illustration, soit par le second plat, selon le cas. Tous les autres exemplaires originaux sont filmés en commençant par la première page qui comporte une empreinte d'impression ou d'illustration et en terminant par la dernière page qui comporte une telle empreinte.

Un des symboles suivants apparaîtra sur la dernière image de chaque microfiche, selon le cas: le symbole \rightarrow signifie "A SUIVRE", le symbole ∇ signifie "FIN".

Les cartes, planches, tableaux, etc., peuvent être filmés à des taux de réduction différents. Lorsque le document est trop grand pour être reproduit en un seul cliché, il est filmé à partir de l'angle supérieur gauche, de gauche à droite, et de haut en bas, en prenant le nombre d'images nécessaire. Les diagrammes suivants illustrent la méthode.

rrata
to

pelure,
n à



Grand Trunk Railway

TIME-TABLES

AND

INTERNATIONAL



RAILWAY GUIDE

1865.

SEPTEMBER,

1865.

[SECOND EDITION.]

CONTENTS.

	* Pages.		Pages
Time and Distance Indicator	4		
Steamers to Milwaukee and Chicago ...	11	Montreal and Boston	32
Officers of the Grand Trunk Railway ...	13	Montreal and New York	32
Railway and Steamboat Connections ...	15	Portland, Boston and New York	33
Stage Connections	16	Toronto and Collingwood	33
Portland and Montreal	13, 19	Portland and Bangor	33
Montreal and Toronto	20, 21	Rouse's Point and Ogdensburgh	33
Toronto, Detroit and Chicago	22, 23	Suspension Bridge and Windsor	34, 35
Montreal, Lachine and Province Line	23, 23	Toronto and Hamilton	35
New York, Buffalo, Detroit and Chicago	24, 25	Port Dalhousie and Buffalo	35
Arthabaska and Three Rivers	24	Sumner and Mechanic's Falls	35
Montreal and Rouse's Point	25	Port Hope and Lindsay	36
Buffalo and Goderich	25, 27	Port Hope and Peterboro	36
Buffalo & New York (N. Y. Central R'y)	26, 27	Detroit and Milwaukee	36
Riviere du Loup, Quebec and Montreal	28	London and Port Stanley	37
Ottawa and Prescott	29	St. John's and Waterloo	37
Detroit and Chicago (Mich. Central) ...	29	Buffalo and Niagara Falls	37
Detroit and Chicago (Mich. Southern) ..	29	Brockville and Ottawa	38
Condensed Time-Tables	30, 31	Stonington Line for New York	38
New York and Buffalo (Eric Railway) ..	30, 31	Skowhegan and Portland	39

43 +
56 Sec
page 8

MONTREAL:

PUBLISHED BY M. LONGMOORE & CO.,

PRINTING HOUSE, 31 GREAT ST. JAMES STREET.

ROYAL INSURANCE COMPANY.

FIRE AND LIFE.

CAPITAL - - - - - TWO MILLIONS STERLING

FIRE DEPARTMENT.

Nearly the Largest Insurance Company in the World.

Annual Income £500,000.

Invested Funds in hand to meet Claims, over £800,000.

Advantages to Fire Insurers.

The Company is enabled to direct the attention of the Public to the advantages afforded in this branch.

- 1st. Security unquestionable.
- 2nd. Revenue of almost unexampled magnitude.
- 3rd. Every description of property insured at moderate rates.
- 4th. Promptitude and Liberality of Settlement.

LIFE DEPARTMENT.

LARGE LIFE BONUSES DECLARED IN 1855 AND 1860.

Two per cent. per Annum on Sum Assured.

Being *THE LARGEST BONUS* ever continuously declared by any Office.

Boons to Life Assurers:

The Directors invite attention to a few of the advantages the "Royal" offers to its Life Assurers:—

- 1st. The Guarantee of an ample Capital, and Exemption of the Assured from Liability of Partnership.
- 2nd. Moderate Premiums.
- 3rd. Small charge for Management.
- 4th. Prompt Settlement of Claims.
- 5th. Days of Grace allowed with the most liberal interpretation.
- 6th. Large Participation of Profits by the Assured, amounting to **TWO-THIRDS** of their net amount, every five years, to Policies then two entire years in existence.

H. L. ROUTH, Agent, Montreal.

MESSRS. FORSYTH, BELL & CO., Agents, Quebec.

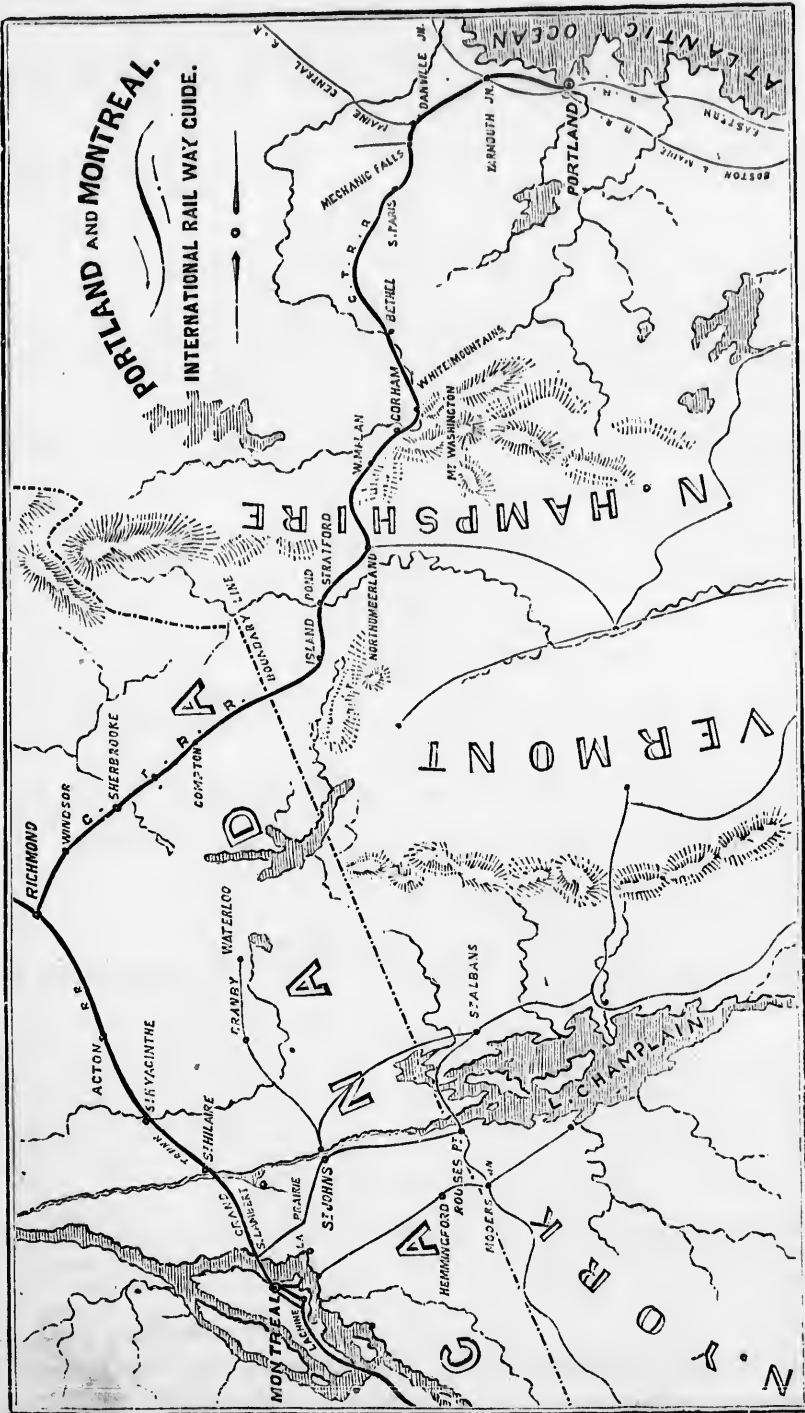
MR. GEO. B. HOULISTON.....	<i>Three Rivers</i>
MR. JAMES MORGAN.....	<i>Sorel.</i>
MR. W. COOTE.....	<i>St. Johns</i>
MR. R. J. LONSDALE.....	<i>Lennoxville.</i>
MR. ANDREW THOMSON.....	<i>Belleville.</i>
MR. HENRY J. FREIL.....	<i>Ottawa.</i>
MR. R. A. YOUNG.....	<i>Aylmer.</i>
MR. JOHN DOWSLEY.....	<i>Prescott.</i>
MR. GEO. EASTON.....	<i>Brockville</i>
MESSRS. DEACON & MORRIS.....	<i>Perth.</i>
MR. M. W. STRANGE.....	<i>Kingston.</i>

F. H. HEWARD, Agent, Toronto

MR. WM. BELLHOUSE.....	<i>Hamilton.</i>
MR. F. B. BEDDOME.....	<i>London.</i>
MR. G. M. GOODEVE	<i>Cobourg.</i>



eight hundred
of Canada.



FIG

The

NOS

D. I

Hon. L
Hon. J
Hon. T

N. B.
and claim

This C
Protecting
offered by
NINE
of profits

Have been
obtained

Montr

**NORTH BRITISH & MERCANTILE
FIRE AND LIFE INSURANCE COMPANY**

OF EDINBURGH AND LONDON.

ESTABLISHED IN 1809.

Incorporated by Royal Charter and Acts of Parliament.

CAPITAL, £2,000,000 STERLING.

Invested Funds, £2,304,512 7s 10d Sterling :

The Revenue for 1863, £565,458 16s 2d Sterling.

CANADA BRANCH.

HEAD OFFICES.

NOS. 2, 4, & 5 MERCHANTS' EXCHANGE, ST. SACRAMENT STREET,
MONTREAL.

MANAGING DIRECTORS.

D. LORN MACDOUGALL, Esq. THOMAS DAVIDSON, Esq.

ORDINARY DIRECTORS.

Hon. LOUIS RENAUD, M.L.C. JAMES LAW, Esq., Merchant,
Hon. JOHN ROSE, M. P. P. C. J. BRYDGES, Esq., Managing
Hon. THOMAS RYAN, M.L.C. Director, Grand Trunk Railway.

Inspector.—WM. EWING,

Secretary.

Medical Officer.

H. J. JOHNSTON.

WM. SUTHERLAND, M.D.

FIRE DEPARTMENT.

Insurances effected at the lowest current rates of Premium.

N.B.—The full power of settling all losses is vested in the Montreal Board of Directors, and claims are payable immediately on being satisfactorily adjusted.

LIFE DEPARTMENT.

This Company combines the system of Mutual Assurance with the safety of a Large Protecting Capital, and thus affords all the facilities and advantages which can be prudently offered by any Life Assurance Company.

NINE-TENTHS of the Profits divided amongst those insured under the participation of profits class.

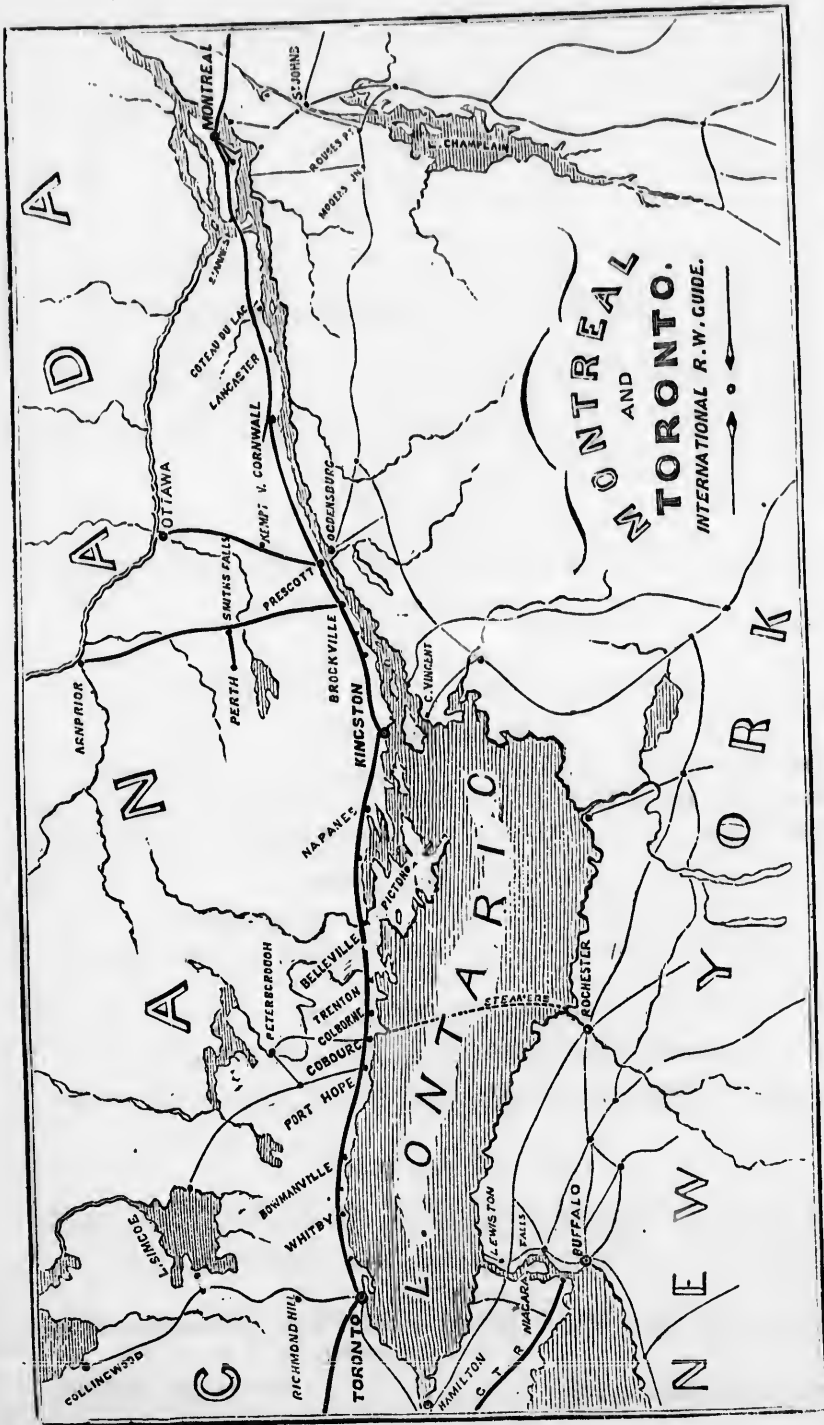
AGENCIES

Have been established throughout the Province, at any of which full information can be obtained as to rates, &c.

MACDOUGALL & DAVIDSON,

General Agents for Canada.

Montreal, 1st November, 1864.



L I F

The Ass
tunity of J

ANNUAL 1
5th
POLICY H
RATES OF
equ
CREDIT FO
INDISPUTA

OMISSION
pay
No REST
No EXTR
The Assu
Credit for
war
PROFITS
Pol

Place

C

SUMS A
ANNUA

JOHN GR
ANDREW

Manag
A.

Perfect S

The Co
pendent
to the ass
Tables
Agencies

LIFE ASSOCIATION OF SCOTLAND.

FOUNDED 1838,

Annual Income, £220,873 Sterling. Accumulated Fund, £853,766 Sterling.

LEADING FEATURES.

The Association has two distinct Schemes of Assurance, which Assurers have the opportunity of joining.

CLASS A.—ORDINARY ASSURANCES.

ANNUAL DISTRIBUTION OF PROFITS IN CASH.—The Lists of Policies close annually on the 5th April.

POLICY HOLDERS free from Risks of Partnership, and sums assured guaranteed.

RATES OF PREMIUM moderate, and calculated so as to place all entrants on a footing of equality.

CREDIT FOR ONE-HALF of the first six years' premiums for policies of £500 Stg. or upwards. INDISPUTABILITY OF POLICIES after Five years.

CLASS B.—UNCONDITIONAL ASSURANCES.

OMISSION to pay a Premium by oversight does not affect the Assurance, and, after a time, payment may be intentionally Postponed for a Year.

NO RESTRICTION is imposed as to Occupation or Residence.

NO EXTRA PREMIUMS can be payable after the Policy has been issued.

The Assurance is virtually Non-Forfeitable and Unquestionable.

Credit for one-half of the Premiums for the first Six years for Policies of £300 Stg. or upwards.

PROFITS ALLOCATED to Policies will be BONUS ADDITIONS to Sums assured. The Lists of Policies close annually on 5th December.

P. WARDLAW,
Secretary.

Place d'Armes, Montreal, 1st November, 1864.

CANADA LIFE ASSURANCE COMPANY.

ESTABLISHED 1847.

CAPITAL	\$1,000,000
SUMS ASSURED..... over.....	\$4,000,000
ANNUAL INCOME..... over.....	\$150,000
ASSETS..... over.....	\$600,000.

Office:—23 GREAT ST. JAMES STREET.

Honorary Directors:

JOHN GREENSHIELDS, Esq., Merchant. C. J. BRYDGES, Esq., Grand Trunk Railway.
ANDREW ALLAN, Esq., of Messrs. H. & A. Allan JOHN OGILVY, Esq., Merchant.

Medical Advisers:—DR. HALL AND DR. REDDY.

Manager:

A. G. RAMSAY

General Agent:

T. W. MEDLEY.

LIBERAL CONDITIONS AND PRIVILEGES.

Perfect Security, and Rates Lower than those offered by English or Foreign Companies.

POLICIES CAN BE EFFECTED WITHOUT TROUBLE OR DELAY.

The Company has Agents in all the principal towns throughout Canada, and a correspondent in London, (England,) authorized to accept premiums when that may be convenient to the assured.

Tables of Rates, Forms, and all information may be obtained from the Head Office and Agencies of the Company.

H. ABBOTT, Agent.

THE
E U R O P E A N



(LIFE AND

GUARANTEE)

ASSURANCE SOCIETY,
OF LONDON AND EDINBURGH.

(Empowered by Special Acts of British and Canadian Parliaments,)

FOR

LIFE ASSURANCE, ANNUITIES,

AND THE

GUARANTEE OF FIDELITY

IN SITUATIONS OF TRUST.

Subscribed Capital	- - - - -	£700,000 Stg.,
	With power to increase to One Million Stg.	
Annual Revenue	- - - - -	£300,000 Stg.

HEAD OFFICE IN CANADA,
71 GREAT ST. JAMES STREET, MONTREAL, C. E

DIRECTORS IN CANADA.

HENRY THOMAS, Esq., (Messrs. Thomas, Thibaudeau & Co.,) Director, Bank of Montreal,
Chairman.

HON. CHAS. ALLEYN, Q.C., M.P.P. Quebec
C. J. BRYDGES, Esq., Managing Director
of the Grand Trunk Railway, Montreal.
HUGH ALLAN, Esq., Montreal.

THOS. CRAMP, Esq., (D. TORRANCE & Co.)
Montreal.
ROBERT CASSELS, Esq., Cashier, Bank of
Upper Canada, Toronto.

In addition to Life Assurance, this Society issues BONDS OF SECURITY for persons holding *Government* or other situations of trust.

LIFE DEPARTMENT.

Persons for whom this Society is Surety can Assure their lives at considerably reduced rates.

Life Policyholders in this Society can avail themselves of the Society's Suretyship to a proportionate amount at any time—*free of expense.*

EDWARD RAWLINGS,

Secretary.

AN
 U R O N
 CODENICH
 TORONTO, BUFFALO AND DETROIT

THE COLONIAL LIFE ASSURANCE COMPANY.

HEAD OFFICE—EDINBURGH and MONTREAL,

19 Great St. James Street.

MANAGER FOR CANADA - - - - - W. M. RAMSAY
INSPECTOR OF AGENCIES - - - - - RICHARD BULL

Agencies in all the Towns in Canada, where information as to the different modes of Life Assurance may be obtained.

W. M. RAMSAY, Manager.

CHEAP ENGLISH PAPER WAREHOUSE.

ROBT. WEIR & CO.,

PAPER MAKERS, WHOLESALE STATIONERS

And Manufacturers of

ACCOUNT BOOKS, ENVELOPES, AND GENERAL STATIONERY,

15 Great St. James Street, Montreal.

Importers of the best English Hand-made Papers; Bookbinders' Cloths & Leathers

A large Stock always kept on hand.

PRINTERS AND BOOKBINDERS.

CABINET-MAKER AND UNDERTAKER.

The undersigned, having re-built and re-opened his premises at the corner of Craig Street Haymarket Square, is prepared to offer increased facilities for carrying on his business of and CABINETMAKER and UNDERTAKER.

He has made particularly very extensive additions to the FURNITURE BRANCH, and is prepared to supply or make to order all kinds of Household or Office Furniture on reasonable terms. He will guarantee all articles purchased from him to be of the nature and quality represented.

He would call the particular attention of those furnishing to the large and varied stock of Furniture now in his Ware-rooms, consisting in part of handsome PARLOUR and DINING-ROOM SETS in Mahogany and Black Walnut; elegant Marble-top COTTAGE FURNITURE, in Mahogany, Black Walnut, Oak and Chestnut; and Ornamented Sets of BEDROOM FURNITURE; all of which he will dispose of at the lowest prices. His assortment of Spring Beds, Cots, Invalid Beds, Camp Chairs, Camp Stools, Mattresses, Feather Beds, &c., &c., is also large.

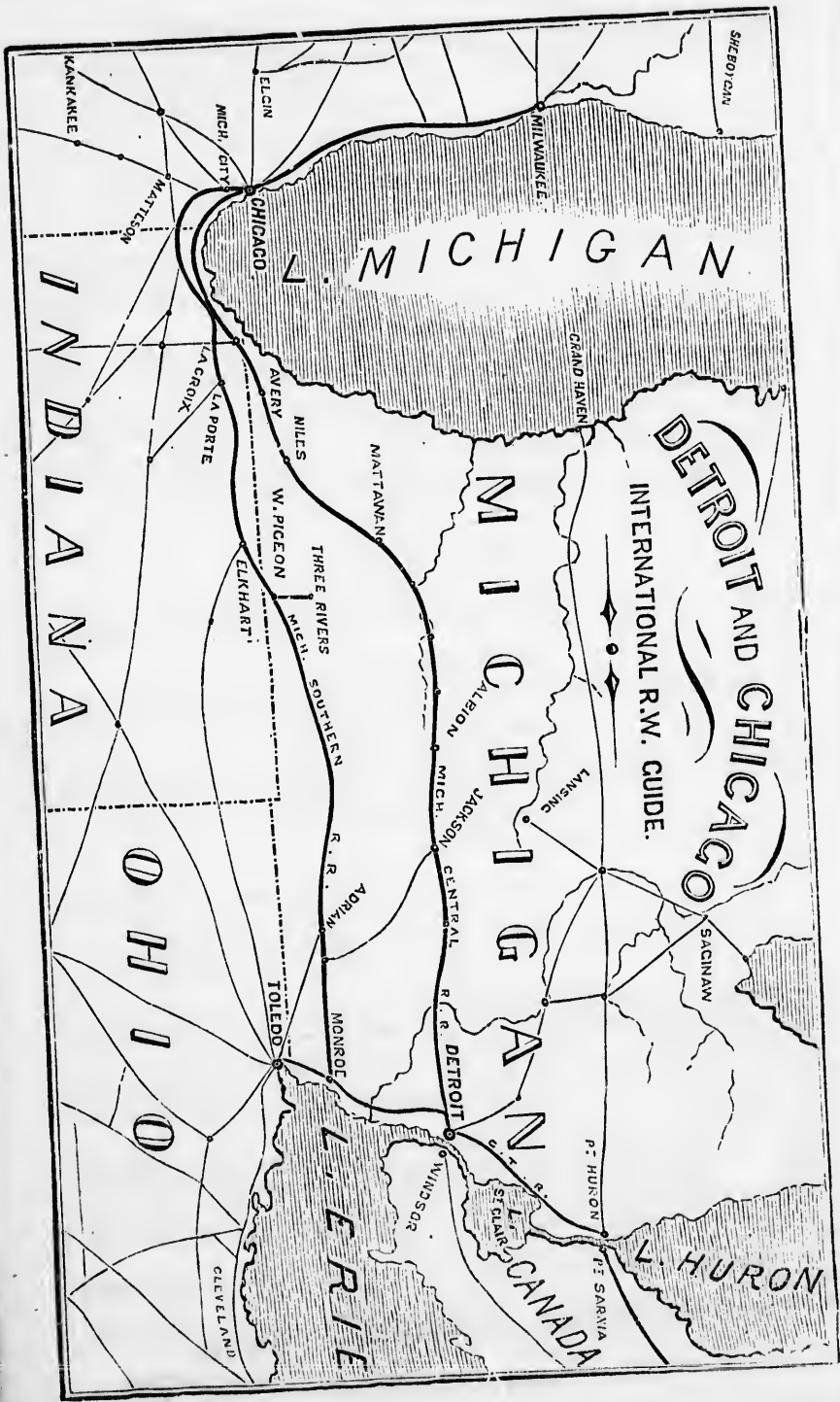
As heretofore, he will devote his careful and personal attention to the furnishing of FUNERALS.

He is the sole Agent in Canada for the sale of FISK'S IMPROVED PATENT METALLIC BURIAL CASKET, the CITY DEPOT for which has been opened on his premises.

GEORGE ARMSTRONG,

Corner of Craig Street and Victoria Square, MONTREAL.

COMPTON



DETROIT AND CHICAGO
 INTERNATIONAL R.W. GUIDE.

SC
 Inves
 He
 Hon
 Hu
 R.
 Hon
 Wil
 The
 assur
 Un
 LAR
 All
 in Cap
 Cases
 the
 ben
 In
 effect
 ling, a
 died f
 1862.
 Comp
 In J
 effect
 sterlin
 He di
 mium
 In J
 effect
 sterlin
 amou
 havin

INSURANCE.

SCOTTISH PROVINCIAL
ASSURANCE COMPANY.

(Established, 1825.)

Incorporated by Act of Parliament.

Capital—One Million Sterling.

Invested in Canada, &c. \$500,000.

CANADA.

Head Office,—Place d'Armes, Montreal.

BOARD OF DIRECTORS.

Honourable John Young, Chairman.
Hugh Taylor, Esq., Advocate.
R. D. Collis, Esq., Merchant.
Hon. Charles Wilson, M. L. C.
William Sache, Esq., Banker.

SECRETARY.

A Davidson Parkor.

The Special Advantages to be derived from
assuring in this office are:—

Unusually moderate rate of Premiums!

LARGE BONUSES

LIBERAL CONDITIONS!

All business transactions finally concluded
in Canada.*Cases occurring in Canada, and selected from
the Books of the Company, as shewing the
benefits of Life Assurance:—*In January, 1861, F. C., aged 41 years,
effected an Assurance on his life for £500 ster-
ling, at an annual Premium of £8 17s 6d. He
died from effects of an accident in December,
1862. Only two premiums were paid to the
Company.In January, 1862, J. F. F., aged 56 years,
effected an Assurance on his life for £1000
sterling, at an annual Premium of £41 15s 10d.
He died in February, 1863. Only two pre-
miums were paid to the Company.In January, 1863, J. A. P., aged 33 years,
effected an Assurance on his life for £500
sterling. He died in July of same year. The
amount assured was paid, only one Premium
having been received by the Company.A. DAVIDSON PARKER,
Secretary.

INSURANCE.

PHENIX FIRE INSUR-
ANCE COMPANY, OF LONDON.

Established in 1782.

This Company having invested, in con-
formity with the Provincial Act,

ONE HUNDRED THOUSAND DOLLARS,

for the special security of Policyholders in
Canada, is prepared to accept Risks on Dwell-
ing Houses, Household Goods and Furniture,
and General Merchandise, at the lowest cur-
rent rates.

GILLESPIE, MOFFATT & CO.,

Agents for Canada.

JAMES DAVISON,

Manager.

ADVOCATES.

J. G. K. HOUGHTON,

Advocate & Attorney-at-Law
In all the Courts of Lower Canada,
Little St. James Street,
Montreal.

PAINTS, &c.

E. ATWATER & CO.,

Oil, Lead and Colour Merchants,
Varnish Manufacturers. Importers of German
Sheet Window Glass, &c., &c.,E. Atwater. St. Nicholas Street,
H. W. Atwater. Montreal.
C. S. Blackman.

OPTICIAN.

C. HEARN,

Manufacturing Optician,
160 Notre Dame Street, Montreal.Every description of Mathematical and Op-
tical instruments constantly on hand or
made to order.

MERCHANT TAILORS.

ALBION CLOTH HALL,

J. D. ANDERSON, Merchant Tailor,
64 Great St. James Street, Montreal,
[opposite the Bank of Upper Canada.]

JAMES MUIR,

Merchant Tailor,
79 Great St. James Street, Montreal,
[opposite the Ottawa Hotel.]

ROBERT SEATH,

Wholesale Clothier and Importer,
No. 59 McGill Street, Montreal.

SHEBO CAN

V

MONTREAL AND CHICAGO

MONTREAL

GRAND TRUNK RAILWAY.

1865. SUMMER ARRANGEMENTS. 1865.

EXPRESS LINE TO THE WEST

VIA THE

GRAND TRUNK RAILWAY TO PORT SARNIA,

And the following First-Class Steamers for

CHICAGO, MILWAUKEE, AND OTHER LAKE MICHIGAN PORTS,

And for all points in the West and Northwest.

The splendid low-pressure Passenger Steamers B. F. WADE, ANTELOPE, MONTGOMERY, and SUN, will form the line between Sarnia and Chicago and Milwaukee during the season of 1865.

One of the above Steamers will leave PORT SARNIA on the Arrival of the Grand Trunk Railway Train from the East every TUESDAY, THURSDAY and SATURDAY, to connect at Chicago and Milwaukee with all Lines for the West, South, and Northwest.

The following Time-Table will be strictly adhered to:

	WILL LEAVE SARNIA.	RETURNING from CHICAGO (Foot of South La Salle St.) at 7 P.M.
B. F. WADE, Cpt. L. B. Goldsmith	May 6, 16, 25.....	August 8, 17, 26....
	June 3, 13, 22.....	Sept. 5, 14, 23.....
	July 1, 11, 20, 29...	Oct. 3, 12, 21, 31..
ANTELOPE, Capt. T. G. Butlin.	May 9, 18, 27.....	August 1, 10, 19, 29
	June 6, 15, 24.....	Sept. 7, 16, 25.....
	July 4, 13, 22.....	October 5, 14, 24..
MONTGOMERY, Capt. A. Gillies.	May 11, 20, 30.....	August 3, 12, 22, 31
	June 8, 17, 27.....	Sept. 9, 19, 28.....
	July 6, 15, 25.....	October 7, 17, 26..
SUN, Capt. R. A. Jones.	May 13, 23, June 1, 10, 20, 29..	August 5, 15, 24.... Sept. 2, 12, 21, 30..
	July 8, 18, 27.....	October 10, 19, 28..

These boats can be relied on to leave as advertised, thus making the only Passenger and Freight Line around the Great Lakes having regular days and hours of sailing.

FOR LAKE SUPERIOR.

Portage Lake, Sault Ste. Marie, Marquette, Copper Harbor, Eagle Harbor, Eagle River, Lapointe, Ontonagon, and Superior,

A Steamer will leave SARNIA every evening (Sundays excepted.)

Passengers desiring to travel through all Rail can obtain Tickets via the Grand Trunk Railway cheaper than by other Rail Routes, whilst the accommodation afforded to Passengers is second to none.

Close connection is made at Detroit with Michigan Central, Michigan Southern, and Detroit and Milwaukee Railways.

SUPERB SLEEPING CARS RUN ON ALL NIGHT TRAINS.

At Refreshment Rooms American Money is received at par from Passengers holding Through Tickets.

For Fares, Rates of Freight, and all other particulars, apply to the Agents of the Grand Trunk Railway Company.

C. J. BRYDGES,
Managing Director.

Montreal, May 1, 1865.

JOSE
RICH
HEN
H. S.
F. C.
P. S.

W. J.
J. F.
H. B.
A. S.

NEW
BOST

BAN
OGD
BUF
CINC

CHIC

MIL
ST. L
DET.

GR
Notic

Arr
Mont
conve
Freig
are p
ding
prime
The
reduc
all go
Imp
pany
Thro
place
Good
be for
tent
sent t
arriv
Full
on ap
at M
Stati

F. C.
C
P. S.

Grand Trunk Railway Company of Canada.

PRESIDENT:

EDWARD W. WATKIN Esq., M. P., London.

CHAIRMAN OF CANADIAN BOARD:

Hon. JAMES FERRIER, M. L. C., Montreal.

MANAGING DIRECTOR:

CHARLES JOHN BRYDGES, Esq., Montreal,

OFFICERS:

JOSEPH HICKSON,	Secretary and Treasurer.
RICHARD EATON,	Locomotive Superintendent.
HENRY YATES,	Engineer.
H. SHACKELL,	Auditor.
F. C. STRATTON,	General Eastern Freight Agent, Montreal.
P. S. STEVENSON,	General Western Freight Agent, Toronto.

LOCAL SUPERINTENDENTS:

W. J. SPICER,	{ Montreal to Detroit.
J. F. BARNARD,	{ Montreal to Province Line.
H. BAILEY,	{ Buffalo to Goderich.
A. S. MACBEAN,	{ Montreal to Portland.
	{ Montreal to Rouse's Point.
	{ Richmond to Quebec and Riviere du Loup.

AGENCIES IN THE UNITED STATES:

NEW YORK	E. P. BEACH, General Agent, 279 Broadway.
BOSTON	{ GEO. PHIPPEN,
	{ C. SHUTTER &
	{ W. J. OSBORN.
BANGOR, ME.	WM. FLOWERS.
OGDENSBURGH.	C. J. BALDWIN.
BUFFALO	GEORGE H. TRYON.
CINCINNATI	TAYLOR & BROTHER.
CHICAGO	{ JAMES WALSH
	{ &
	{ J. H. WHITMAN.
MILWAUKEE	L. H. KELLOGG.
ST. LOUIS	JAMES SMITH.
DETROIT	E. REIDY.

GRAND TRUNK RAILWAY COMPANY OF CANADA.

Notice to Importers and Shippers of Produce.

Arrangements having been made with the Montreal Ocean Steamship Company for the conveyance of Butter, Provisions, and other Freight, the Grand Trunk Railway Company are prepared to issue Through Bills of Lading to Liverpool and Glasgow at all their principal Stations and Agencies.

The rates of Freight have been considerably reduced, and every dispatch will be given to all goods shipped by this route.

Importers are also notified that the Company has arranged with Messrs Allan to issue Through Bills of Lading in England to all places in Canada and the Western States. Goods shipped on Through Bills of Lading will be forwarded to destination without any detention, provided the invoices of value are sent to the Company's Agent at Montreal, on arrival of the Steamships.

Full particulars, rates, &c., can be obtained on application to the General Freight Agents at Montreal and Toronto, and at the principal Stations.

C. J. BRYDGES,
Managing Director.

F. C. STRATTON,
Gen. Eastern Freight Agt.,
Montreal.

P. S. STEVENSON,
Gen. Western Freight Agt.,
Toronto.

5,65

GRAND TRUNK RAILWAY OF CANADA,

NOTICE.—In order to prevent delays to Freight, and facilitate the transit of Traffic to and from the United States, the Company now undertake to do the necessary Customs business at the undermentioned Frontier Stations on the Railway, viz:

- Island Pond,
- Coaticooke,
- Rouse's Point,
- Lemmingford,
- Prescott,
- Sarnia,
- Port Huron.
- Buffalo,
- Fort Erie,

Merchants desirous of availing themselves of this arrangement should forward Powers of Attorney, for the Company to act on their behalf in making Declarations of goods, and transmit the necessary Invoices of value and Consular Certificates to the Company's Agents at these Stations.

C. J. BRYDGES,
Managing Director.

WADDELL & PEARCE,
GENERAL HARDWARE MERCHANTS,
 IRON, STEEL, METALS, AND RAILROAD SUPPLIES,
 OFFICE, No. 27 St. John Street,
 MONTREAL, C. E.

Sole Agents in Canada and British Provinces of North America for

The Patent Shaft and Axle Tree Company, (Limited.) Tyres, Railway Axles, and Wheels
 Charles Cammell & Co., (Limited.) Cast Steel, "Cyclops" Files, Bessemer Steel Rails.
 Homogeneous Steel Plates, and "double faggotted" Engine and Car Springs.
 Taylor, Bros. & Co., Clarence Iron Works, Leeds, Yorkshire.
 Thos. Dunn & Co., (unlimited) Windsor Bridge Iron Works, Manchester.
 Joseph Tarratt, Sons & Co., Wolverhampton and Birmingham.
 Fallows, Stitt & Co., Iron, Tin, and Metal Merchants, Liverpool.
 Walker & Hall, Electro Plate Works, Sheffield.
 Hargreaves, Smith & Co., Manufacturers of Cutlery and Tools, Files, Saws and Skates.
 Lloyd & Lloyd, Albion Tube Works, Birmingham.
 S. Moulton & Co., Kingston India Rubber Mills, Bradford-on-Avon, Wiltshire.
 Bliven, Mead & Co., Manufacturers of and Wholesale Dealers in American Hardware,
 New York.
 E. Wilmot & Co., Victoria Iron Works, Kingston, C. W.
 N.B.—A stock of Chas. Cammell & Co.'s Warranted "Cyclops" Steel and Files constantly
 on hand.

WM. RODDEN & CO.,
 Manufacturers of the best description of
COOKING AND OTHER STOVES,
 Iron Furniture, Bedsteads & Railings,
BUILDERS', MACHINISTS', AND ORNAMENTAL CASTINGS,
 All in great variety at the
 WORKS, 91 to 99 WILLIAM STREET,
 Sample and Sale Rooms, 62 Great St. James Street,
 MONTREAL, C. E.

A. RAMSAY & SON,
 IMPORTERS OF OILS, PAINTS, VARNISHES, BRUSHES, &c.,
 Rolled, Rough and Polished Plate Glass, English & German Sheet Glass,
 GLAZIERS' DIAMONDS, GOLD & SILVER LEAF BRONZES, &c.,
 37, 39 & 41, Recollet Street, MONTREAL.

LITHOGRAPHERS, &c.

BURLAND, LAFRICAÏN & Co.,

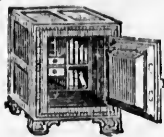
(Successors to George Matthews.)
 ENGRAVERS, LITHOGRAPHERS AND
 PRINTERS,
 66 St. Francois Xavier Street,
 (Opposite the Post Office.)
 Montreal.

WOODEN WARE, &c.

NELSON & WOOD,

(Successors to Nelson & Butters.)
 Importers and Wholesale Dealers in European
 and American Fancy Goods, Paper Hangings,
 Clocks, Looking Glasses, and Looking Glass
 Plates, Manufacturers of Brooms, Wooden
 Ware and Matches,
 19 St. Peter Street, Montreal.
 H. A. Nelson. A. S. Wood.

FIRE-PROOF SAFES.



KERSHAW & EDWARDS

Manufacturers of

SALAMANDER SAFES,

Secured with Powder Proof Locks,

Also,

Combined Iron and Steel Specie Chests and

Doors, Combination Bank Locks, &c.

Warerooms:

82 and 84 St. Francois Xavier Street,

Montreal.

ALFRED RIMMER,

(Under Waddell & Pearce.)

27 JOHN STREET.

MONTREAL.

Seltzer Water,

Rhenish Wines,

Light French Wines,

Pemartin's Sherry,

Sandeman's Port,

All from the places of growth.

SINCLAIR, JACK & CO.,

(Successors to John Sinclair & Son.)

WHOLESALE GROCERS,

AND

COMMISSION MERCHANTS.

St. Andrew's Buildings,

St. Peter Street, 2

Montreal.

DAVID SINCLAIR.
JAMES JACK.

6,65

COMMISSION MERCHANTS.

C. A. STARK & CO.,

Produce and General Commission Merchants,

10 St. Nicholas Street,

(Corner of St Paul Street.)

Montreal.

Consignments of Flour, Grain, Pork, Butter, Ashes, &c., carefully realized, and returns promptly made.

Two thirds Montreal market price advanced against Railway Receipt or Bill of Lading.

ROBERTSON & BEATTIE

(Successors to Robertson, Hutchins & Co.,)

Commission Merchants,

Importers and Wholesale Grocers,

Corner McGill and College Streets,

Montreal.

JOHN RHYNAS,

General Commission and Shipping Merchant,
No. 5 St. Helen Street, Montreal.

Advances made on Consignments for sale, in Montreal, or for shipment to my friends in Europe. 6,65

PORTLAND KEROSENE

COAL OIL CO'Y.—The Oil manufactured by this Company is the *only* genuine *Coal Oil* in America. It is not Petroleum of Pennsylvania, nor the earth-oil of Canada, but the produce of the jet coal of Albert Mines, New Brunswick, and is unequalled for the following qualities, *Brilliance of light and economy*. Does not smoke the glass or crust the wick. Perfect safety. An entire absence of offensive odor.

J. RHYNAS,

Sole Agent for Canada.

No. 5 St. Helen Street, Montreal.

HOWARD SMITH & CO.,

Brokers,

Produce and General Commission Merchants,

14 St. Sacramento Street,

(Near Merchants' Exchange.)

6.65

Montreal.

F. W. HENSHAW,

COMMISSION MERCHANT,

Dealer in

POT AND PEARL ASHES,

And Canadian Produce generally.

Particular attention paid to purchases in Canada, on American orders.

No. 7 St. Sacramento Street,

Montreal.

MONTREAL OCEAN STEAMSHIP COMPANY



Under Contract with the Government of Canada for the conveyance of the
CANADIAN AND UNITED STATES MAILS.

1865. SUMMER ARRANGEMENTS. 1865.

PASSENGERS BOOKED TO LONDONDERRY, AND LIVERPOOL.
RETURN TICKETS GRANTED AT REDUCED RATES.

This Company's MAIL LINE is composed of the undernoted First-Class, Full-Powered,
Clyde-Built, Double Engine Iron Steamships:

HIBERNIAN.....	2434 Tons.....	Capt. DUTTON, R.N.R.
NOVA-SCOTIAN.....	2300 ".....	Capt. WYLIE.
NORTH-AMERICAN.....	1784 ".....	Capt. KERR.
DAMASCUS.....	1300 ".....	Capt. WATT
BELGIAN.....	2434 ".....	Capt. BROWN.
PERUVIAN.....	2600 ".....	Capt. BALLANTINE.
MORAVIAN.....	2650 ".....	Capt. AITON.

SAILING FROM LIVERPOOL EVERY THURSDAY,

AND

FROM QUEBEC EVERY SATURDAY,

Calling at LOUGH FOYLE to receive on board and land Mails and Passengers to and
from Londonderry.

AND THEIR

GLASGOW LINE OF STEAMSHIPS

ST. GEORGE.....	1468 Tons.....	Capt. SMITH, R.N.R.
ST. ANDREW.....	1432 ".....	Capt. SCOTT.
ST. PATRICK.....	1207 ".....	Capt. TROCKS.
ST. DAVID.....	1600 ".....	Capt. AIRD.

SAILING BETWEEN THE CLYDE AND QUEBEC.

At intervals throughout the season of summer navigation, the Steamers of the MAIL LINE
are intended to be despatched from Quebec as undernoted:

BELGIAN.....2nd September, 1865	PERUVIAN.....16th September, 1865
N. AMERICAN.....9th " 1865	HIBERNIAN.....23rd " 1865

Rates of Through Passage from Quebec to Londonderry, or Liverpool:

CABIN...\$66 to 80 } According to accommodation. } STEERAGE.....\$25

AN EXPERIENCED SURGEON CARRIED ON BOARD EACH VESSEL.

Bertás not secured until paid for. For Freight or other particulars, apply to

H. & A. ALLAN,

Corner of Youville and Common Streets, MONTREAL.

August, 1865.

GRAND TRUNK RAILWAY.

1865.

SEA BATHING EXCURSION TICKETS.

TADOUSAC, RIVIERE DU LOUP, CACOUNA AND
PORTLAND.

RETURN TICKETS, valid until Nov. 1st, can now be obtained at the following rates, viz. :

FROM.	TO TADOUSAC AND RETURN.	TO RIV. DU LOUP AND RETURN.	TO PORTLAND AND RETURN.
SARNIA	\$25.00	\$23.00	\$24.00
LONDON	25.00	23.00	24.00
ST. MARY'S	24.00	22.00	23.00
STRATFORD	24.00	22.00	23.00
TORONTO	20.00	18.00	20.00
WHITBY	20.00	18.00	20.00
PORT HOPE	18.50	16.00	18.00
COBOURG	18.50	16.00	18.00
BELLEVILLE	17.50	15.00	16.00
KINGSTON	14.50	12.00	16.00
BROCKVILLE	12.50	10.00	14.00
PRESCOTT	12.50	10.00	14.00
MONTREAL	10.00	7.50	10.50
QUEBEC	5.50	3.00	13.50

TADOUSAC—Situate at the mouth of the Sagueny River, is justly considered one of the most beautiful and salubrious places on the St. Lawrence.

The Hotel accommodation is excellent and the charges moderate.

A Steamer runs between Tadousac and Riviere du Loup and up the Saguenay River to Ha! Ha! Bay.

CACOUNA—The Hotels are such as will afford visitors the greatest possible comfort.

A regular line of Stages will run between Riviere du Loup and Cacouna.

The Boat for TADOUSAC is semi-weekly, leaving Riviere du Loup every TUESDAY and FRIDAY AFTERNOON, at about 5 o'clock. Passengers with Tadousac tickets have the privilege of stopping over at Riviere du Loup as long as they desire during the season.

For further information and Tickets, apply to the Agents of the Grand Trunk Railway Company.

C. J. BRYDGES,

Managing Director.

Montreal, 9th June, 1865.

FORESTER, MOIR & CO.,

Importers and Wholesale Dealers in

TEAS, TOBACCO, AND GENERAL GROCERIES,

St. Helen and Recollet Streets,

MONTREAL.

Sole Agents for the sale of Messrs. McDonald, Bros. & Co's Manufactures of Tobacco.
6,56

GROCERS.

GROCERIES, LIQUORS,

WINES, &c.,

Wholesale and Retail

ALEX. MCGIBBON

ITALIAN WAREHOUSE

69 Great St. James Street,

AND

Corner Notre Dame and St. Gabriel Streets,

Montreal.

KINGAN & KINLOCH,

St. Peter Street, Montreal,

Importers of Teas and General Groceries,
Liquors and Wines.

We keep constantly on hand Refined, Cuba,
and Porto Rico Sugars; Syrups, Molasses,
Coffees, Spices, Raisins, Currants, Nuts, Vin-
egar, Oils, Candles, Soaps, Starch, Blacking,
Drysalters, Dye-Stuffs, Pickles, Brooms,
Pails, Cordage, Fish, &c., &c.

AND

Tobaccos, various brands and qualities.
Pipes, plain and fancy.

GROCERS.

WM. D. McLAREN,

Dealer in

TEAS, COFFEES, SPICES

AND

All the best descriptions of
Family Groceries,

No. 153 St. Lawrence Main Street,

Montreal.

N.B.—Genuine Portland Kerosene Oil con-
stantly on hand.

A. & D. SHANNON,

Wholesale and Retail

GROCERS, WINE AND LIQUOR

Merchants,

38 and 40 McGill Street,

Montreal.

WINE MERCHANTS.

BACON, CLARKE & CO.,

Importers of

WINES, SPIRITS, CIGARS, &c.,

St. Peter Street,

Opposite St. Sacramento Street,

Montreal.

5,65

H I N T S

TO

R A I L W A Y T R A V E L L E R S .

You will save money by purchasing your Tickets before entering the cars.

CHECK YOUR BAGGAGE and the Company will then be responsible for it. Baggage in Passenger Cars is a source of anxiety to the owner: causes inconvenience to others; and is unsightly and altogether out of place.

Baggage can be checked *through* from places in Canada to the United States and vice versa; but in such cases the law requires each Passenger to point out his Baggage to the Customs' Officer at the Frontier Station, in order that it may be examined.

The following is a list of Custom House Stations:—

	<i>American.</i>	<i>Canadian.</i>
Between PORTLAND and MONTREAL	ISLAND POND...	COATICOOK
“ NEW YORK or BOSTON and MONTREAL.....	ROUSE'S POINT & ST. ALBANS.....	ROUSE'S POINT & ST. ARMAND
“ MONTREAL and PLATTSBURGH,	MGOER'S JUNC.....	HEMINGFORD
“ UNITED STATES and CANADA <i>via</i> OGDENSBURGH	OGDENSBURGH.....	PRESCOTT
“ NEW YORK or BUFFALO and DETROIT or CHICAGO.....	BUFFALO	FORT ERIE
“ TORONTO and DETROIT.....	PORT HURON	SARNIA
	PORT HURON	SARNIA

Avoid altercations with Conductors or other Employés of the Company. If you have a grievance make it known by letter to the Managing Director at Montreal and you will obtain redress. Conductors have very responsible and arduous duties to perform on the journey, which require the utmost diligence on their part, and they have not time to enter into long discussions.

IT IS DANGEROUS to stand on the platform of cars or move from one car to another, or attempt to get on or off whilst the Train is in motion. Heads and arms are safest when they are *inside* the car windows.

R A I L W A Y & S T E A M B O A T C O N N E C T I O N S .

THE GRAND TRUNK RAILWAY COMPANY runs its Trains in direct connection with the following Railways and Lines of Steamers, viz:—

- At BUFFALO.....New York Central and New York & Erie Railways.
- “ DETROIT.....Michigan Central, Michigan Southern, and Detroit & Milwaukee Railways.
- “ SARNIA.....During season of navigation a Daily Line of first-class Steamers to Milwaukee and Chicago; also Regular Lines of Steamers to Green Bay and all Ports on Lakes Huron, Michigan, and Superior.
- “ GODERICH.....During season of navigation Regular Lines of Steamers to Milwaukee and Chicago and other Lake Ports.
- “ LONDON.....London and Port Stanley Railway.
- “ TORONTO.....Northern and Great Western Railways.
- “ PORT HOPE.....Port Hope, Lindsay and Beverton Railway.
- “ KINGSTON.....Rome, Watertown and Ogdensburgh Railway.
- “ BROCKVILLE.....Brockville and Ottawa Railway.
- “ PRESCOTT.....Ottawa and Prescott Railway, and Northern Railroad of New York.
- “ PROVINCE LINE.....Plattsburgh Railway.
- “ LACHINE.....During navigation a Daily Line of Steamers to Ottawa.
- “ MONTREAL.....During season of navigation a Weekly Line of Steamers to Liverpool and a Regular Line to Glasgow.
- “ ST. JOHNS.....Stanstead, Shefford and Chambly Railway.
- “ ROUSE'S POINT.....Vermont Central Railway for New York and Boston.
- “ QUEBEC.....During season of navigation a Weekly Line of Steamers to Liverpool and Regular Line to Glasgow.
- “ MECHANIC FALLS.....Oxford Central Railway.
- “ DANVILLE JUNCTION.....Maine Central Railway.
- “ PORTLAND.....Boston and Maine and Eastern Railroads. Regular Line of Steamers to Eastport and St. John, N. B., also to Boston and New York. During Winter, whilst the navigation of the St. Lawrence is closed, a Weekly Line of Steamers to Liverpool.

STAGES, NEAREST TOWNS, &c.

QUEBEC DISTRICT.

RIVIERE DU LOUP	Tri-weekly Stages to Grand Falls and Woodstock, connecting at the latter place with the Railway to St. John and all places in New Brunswick and Nova Scotia.
CRAIG'S ROAD	St. Sylvester, 23 miles; Leeds, 40 miles.
ELACK RIVER	St. Appollinaire, 6 miles; St. Antoine, 9 miles.
METHOT'S MILLS	St. Agathe, 9 miles; Leeds and Inverness, 15 miles; Harvey Hill Copper Mines, 21 miles; St. Croix, 15 miles; Lotbiniere, 27 miles,
BECANCOUR	Stages daily to St. Jules Village, 2 miles; Inverness, 10 miles; Leeds, 20 miles.
SOMERSET	Tri-weekly stage to Halifax, 13 miles, and Maple Grove, 16 miles.
STANFOLD	St. Norbert, 6 miles; St. Sophie, 6 miles; Nicolet, 4 miles.
WARWICK	St. Patrick of Tingwick, 5 miles; Kingsey Falls, 7 miles; St. Albert of Warwick, 6 miles.
DANVILLE	Tingwick, Windsor, and Kingsey.
RICHMOND	Melbourne.

EASTERN DISTRICT.

RICHMOND	Daily Stages to Trenholville, Kingsey, Durham, L'Avenir, and Drummondville. Tri-weekly Stages to Stukeley, Lawrenceville and Waterloo.
SHERBROOKE	Daily Stages to Magog Outlet (Lake Memphremagog) Bury, and Eaton, and Tri-weekly to Weedon.
LENNOXVILLE	Daily Stages to Eaton, Bury, Tingwick, and Winslow Townships, running through, or connecting with other stages for, Villages of Burchton, Eaton Corners, Sawyerville, Robinson, Gould and Stormaway. Also Tri-weekly to Westbury and Dudswell.
WATERVILLE	Stages twice-a-week to North Hatley.
COMPTON	Daily to Hatley, East and West, and Stanstead.
COATICOOKE	Daily to Barnston and Stanstead.
ISLAND POND	Daily to East and West Charleston, Derby Centre, Derby Line and Stanstead.
NORTH STRATFORD	Daily to Colebrook, West Stewartston, N. H., and Canaan, Vt.
NORTHUMBERLAND	Daily to Lancaster, Littleton, and St. Johnsbury.
GORHAM	Stages to Bartlet, Jackson, Randolph, Lancaster and Jefferson. In Summer to Glen House and summit of Mount Washington, connecting at Glen House with stages for Jackson, Conway, Bartlet, and Crawford House.
SOUTH PARIS	Tri-Weekly to Frifeburg, Lovel and Waterford. Daily to Bridgeton and Harrison, going through to Frifeburg Monday, Wednesday, and Friday.

CENTRAL DISTRICT.

ST. ANNE'S	Boat daily to Ottawa.
VAUDREUIL	Stage connects with all Express Trains for Rigaud, Point Fortune and Carillon.
COTEAU LANDING	Mail daily for St. Polycarpe, Peverel, Stackhouse's Mills, and Mongeas.
LANCASTER	Daily for Alexandria, Vankleek's Hill, West Hawkesbury and L'Original.
CORNWALL	Ferry daily at 8 A. M. for Baker's Wharf, Summerstown, St. Regis, Dundee, C. E., Hogansburg, and Fort Covington, during navigation.
DICKINSON'S LANDING	Monday, Wednesday, and Friday for Lanenburg, Newington, Berwick, and Crysler's.
AULTSVILLE	A Ferry connects with every Passenger Train for Massena Springs; distance from Aultsville 7 miles; Stage at Louisville Landing connects with Trains and Ferry.

CENTRAL DISTRICT.—(Continued.)

WILLIAMSBURG	Monday, Wednesday and Friday, for Bell's Corners and Winechester.
MATILDA	Mail Monday, Wednesday, and Friday, 6 A.M., for South Mountain, Dixon's Corners, and Inkermann.
BROCKVILLE	Daily to Farmersville and Westport. Stages connect with B. & O. Trains at Perth for Merrickville; at Almonte for Packingham; at Arnprior for Renfrow.
KINGSTON	Daily to Bath, Picton, Odessa, Clark's Mills, Centreville, Tamworth, Elginburg, Railtown, and Sydenham: Tuesday, Thursday, and Saturday to Grenvale and Harrowsmith; Wednesday and Saturday to Batevsea. Centreville.
NAPANEE	One horse wagon daily to Newburgh, Camden East, and Centreville.
BELLEVILLE	Daily for Sterling, Tweed, Bridgewater, Marmora and Madoo.
TRENTON	Daily for Frankford.
BRIGHTON	Daily to Picton, Wellington, Consecon, and District of Princeo Edward; Mondays, Wednesdays, and Fridays to Campbellford. Steamers "Empress" and "Rochester," 6 A.M., for Rochester daily.
COLBORNE	Daily to Castleton, Warkworth, Porey, Hastings, and Norwood.
COBOURG	Stage Tuesday, Thursday and Saturday, for Cold Springs and Gore's Landing, (Rice Lake.)
PORT HOPE	Steamers to Rochester, connecting therewith with N. Y. C. R. R.
BOWMANVILLE	Daily for Hampton, Enniskillen, Tyrone, Charlesville, Williamsburg and Seugog Lake.
OSHAWA	Daily for Columbus, Raglan, Princeo Albert, Manchester, Borelia, Port Perry, Sonya, Manilla, Cannington, Beaverton, Simcoe, Argyle, Oakwood, and Lindsay.
PORT WHITBY	Daily for Manchester, Port Perry, Princeo Edward, Manilla, Lindsay, Beaverton, Ashburn, Utica, Epsou and Uxbridge.
SCARBORO	Daily to Markham and Stouffville.

WESTERN DISTRICT.

WESTON	Daily for Thistletown, Woodbridge, Pine Grove, and Kleinburg. Stage connection at Thistletown for Clairville, Cohain and Bolton Village.
MALTON	Daily to Grahamsville, Stanley Mills, Tullamore, Sand Hill, Munsie's Corners, and Mono Mills.
BRAMPTON	Daily to Cheltenham, Charlestown, Sligo, Campbell's Cross, Alton, and Orangeville.
GEORGETOWN	Stage daily to Stewarton. Ashgrove, Hornby, Milton, and to Silver Creek, Bullinfaad, Erin, and Hillsburg.
GUELPH	Daily to Elora, Fergus, Mount Forest, Durham, and Owen Sound. To Dundas and Hamilton.
BERLIN	Daily for Glen Allen and Preston.
BADEN	Daily to Wellesley Village, Lisbon and Phillipsburg.
STRATFORD	Stage to Millbank, Monday, Wednesday and Friday.
LONDON	Stage for Exeter, Belmont, and Clinton.
LUCAN	Daily for Adare, Devon, Exeter, Francistown, Rogerville and Clinton, Elginfield, St. Johns, and London.
WIDDER	Daily to Pine Hill, Sylvan, and Arkane.
FORREST	Tuesday, Thursday, and Saturday, Stage for Hillsboro.
PORT HURON	Daily to Lakeport, Lexington, Forrestville, and Forrester, and from Port Huron to Clyde, Fairfield, Kenockel and Brockway.
RIDGWAY	Stages twice daily to Romeo, Raydomada, Burke Corners, Richmond and Memphis; daily to Almonte. On closing of navigation, daily to St. Clair City and Columbus.
NEW BALTIMORE	Stage twice daily to Baltimore. On close of navigation daily to Algonac and Newport.

BUFFALO AND GODERICH DISTRICT.

CANFIELD	Stages to Cayuga.
CALEDONIA	Daily to Hamilton, Port Dovor and Simcoe.
BRANTFORD	Stages to Simcoe.
TAVISTOCK	Woodstock.
SEAFORTH	" Brucefield, Varna, Bayfield, Ainleyville, Wroxeter &c.
CLINTON	Stages to Bruceville, Rogersville, Francistown, Exeter, and St. Johns.
GODERICH	Stages to Kincardine, Lucknow, &c.

PORTLAND TO MONTREAL.

[June 27.

TOTAL MILES.	STATIONS.	Express.	Local Trains.	Local Trains.
	BOSTON.....Depart	3.00 P. M.	7.30 A. M.	
	PORTLAND.....Arrive	8.00 P. M.	12.30 P. M.	
	PORTLAND.....Depart	7.00 A. M.	1.25 P. M.	
5	Falmouth.....	7.20 "	1.45 "	
9	Cumberland.....	7.32 "	2.00 "	
11	Yarmouth.....	7.40 "	2.04 "	
12	Yarmouth Junc.....	7.44 "	2.15 "	
15	North Yarmouth.....	7.52 "	2.25 "	
18	Pownal.....	8.00 "	2.37 "	
22	New Gloucester.....	8.10 "	2.55 P. M.	
27	DANVILLE Junc.....Arrive	8.30 A. M.	7.48 P. M.	
	BANGOR.....	8.45 A. M.	3.15 P. M.	
33	Empire Road.....	8.55 "	3.28 "	
36	Meehan Falls.....	9.10 "	3.45 "	
41	Oxford.....	9.30 "	4.05 "	
47	South Paris.....	9.50 "	4.25 "	
55	West Paris.....	10.10 "	4.45 "	
62	Bryant's Pond.....	10.20 "	5.00 "	
65	Locke's Mills.....	10.35 "	5.15 "	
70	Bethel.....	10.45 "	5.27 "	
74	West Bethel.....	11.05 "	5.45 "	
80	Gilead.....	11.20 "	6.00 "	
86	Shelburne.....	11.40 "	6.20 "	
91	Gorham.....	11.55 "	6.40 "	
98	Berlin Falls.....	12.10 P. M.	6.55 "	
103	Milan.....	12.25 "	7.12 "	
109	West Milan.....	12.42 "	7.30 "	
116	Stark.....	1.00 "	7.50 "	
122	Northumberland.....	1.10 "	8.00 "	
126	Stratford Hollow.....	1.20 "	8.10 "	
130	Stratford.....	1.30 "	8.20 "	
134	North Stratford.....	1.55 "	8.40 "	
141	Wenlock.....	2.15 "	9.00 "	
149	ISLAND POND }.....Arrive	2.30 "	10.00 "	6.00 A. M.
	ISLAND POND }.....Depart	2.30 "	10.00 "	6.30 "
160	Norton.....	3.00 "	11.00 "	6.45 "
166	Boundary Line.....	*3.10 "	11.35 "	7.15 "
175	Coaticooke.....	3.30 "	*12.00 MID'T	7.35 "
183	Compton.....	4.00 "	*12.10 A. M.	7.40 "
186	Waterville.....	4.15 "	12.30 "	8.00 "
193	Lennoxville.....	4.25 "	12.40 "	8.10 "
196	Sherbrooke.....	4.40 "	*12.55 "	8.30 "
203	Brompton Falls.....	*5.00 "	*1.20 "	8.50 "
211	Windsor.....	5.25 "	1.50 "	9.20 "
221	RICHMOND .. }.....Arrive	5.25 "	2.20 "	9.35 "
	RICHMOND .. }.....Depart	5.40 "	2.40 "	10.00 "
231	New Durham.....	*6.05 "	*2.45 "	10.19 "
235	Old Durham.....	*6.15 "	*3.00 "	10.35 "
243	Acton.....	6.35 "	3.25 "	10.55 "
249	Upton.....	*6.50 "	3.45 "	11.10 "
252	St. Liboire.....	*6.59 "	*3.55 "	11.20 "
255	Britannia Mills.....	*7.05 "	*4.05 "	11.40 "
262	St. Hyacinthe.....	7.20 "	4.25 "	12.00 Noon
269	Soixante.....	7.45 "	*4.45 "	12.20 P. M.
275	St. Hilaire.....	*7.53 "	5.00 "	12.30 "
276	Belœil.....	*8.08 "	5.30 "	12.45 "
282	Bou. Mountain.....	*8.18 "	5.50 "	12.55 "
287	St. Hubert.....	8.27 "	6.10 "	1.05 "
290	St. Lambert.....	8.50 P. M.	6.35 A. M.	1.30 P. M.
297	MONTREAL.....			

* Trains do not stop unless Signalled.

TOTAL MILES.
7
10
15
21
22
28
35
42
44
48
54
62
66
76
86
94
101
104
111
114
122
131
137
148
156
163
167
171
175
181
188
194
200
206
212
217
223
227
232
236
242
249
256
261
265
270
275
279
282
285
286
288
292
297

MONTREAL TO PORTLAND.

[June 27.

[June 28.

Local
Trains.

TOTAL MILES.	STATIONS.	Express.	Express.	Local Trains.
	MONTREALDepart	2.00 P. M.	10.10 P. M.	9.00 A. M.
7	St. Lambert.....	2.23 " "	10.50 " "	9.30 " "
10	St. Hubert.....	2.30 " "	10.58 " "	9.45 " "
15	Bou. Mountain.....	2.40 " "	11.10 " "	10.10 " "
21	Belœil.....	2.52 " "	11.30 " "	10.35 " "
22	St. Hilaire.....	3.00 " "	11.40 " "	10.45 " "
23	Soixante.....	3.15 " "	11.55 " "	11.10 " "
35	St. Hyacinthe.....	3.40 " "	12.15 A. M.	11.40 " "
42	Britannia Mills.....	4.00 " "	12.30 " "	12.10 P. M.
44	St. Liboire.....	4.08 " "	12.25 " "
48	Upton.....	4.15 " "	12.45 " "	12.40 " "
54	Acton.....	4.30 " "	1.00 " "	1.00 " "
62	Old Durham.....	4.50 " "	1.20 " "	1.30 " "
66	New Durham.....	5.05 " "	1.35 " "	1.50 " "
76	RICHMONDArrive	5.30 " "	2.00 " "	2.25 " "
80	Windsor.....	5.45 " "	2.15 " "	2.45 " "
84	Brompton Falls.....	6.10 " "	2.45 " "	3.25 " "
94	Sherbrooke.....	6.30 " "	3.05 " "	3.55 " "
101Arrive	6.45 " "	3.25 " "	4.20 " "
104	Lennoxville.....	6.55 " "	3.35 " "	4.30 " "
111	Waterville.....	7.10 " "	3.55 " "	4.45 " "
114	Compton.....	7.18 " "	4.05 " "	5.10 " "
122	Coaticooke.....	7.45 " "	4.35 " "	5.30 " "
131	Boundary Line.....	8. 0 " "	5.05 " "	6.15 " "
137	Norton.....	8.20 " "	5.20 " "	7.00 " "
148	ISLAND PONDArrive	8.45 " "	5.45 " "	8.00 P. M.
156	Wenlock.....	9.30 " "	6.30 " "
163	North Stratford.....	9.47 " "	6.47 " "
167	Stratford.....	10.05 " "	7.10 " "
171	Stratford Hollow.....	10.15 " "	7.20 " "
175	Northumberland.....	10.25 " "	7.30 " "
181	Stark.....	10.37 " "	7.40 " "
188	West Milan.....	10.53 " "	8.00 " "
194	Milan.....	11.10 " "	8.18 " "
200	Berlin Falls.....	11.25 " "	8.35 " "
206	Gorham.....	11.40 " "	8.47 " "
212Arrive	12.00 MDN'T	9.05 " "
212	Shelburne.....	3.30 A. M.	9.23 " "
217	Gilead.....	3.45 " "	9.37 " "
223	West Bethel.....	4.00 " "	9.55 " "
227	Bethel.....	4.15 " "	10.05 " "
232	Locke's Mills.....	4.25 " "	10.20 " "
236	Bryant's Pond.....	4.40 " "	10.30 " "
242	West Paris.....	4.50 " "	10.47 " "
249	SOUTH PARISArrive	5.30 " "	11.10 " "
256	Oxford.....	5.45 " "	11.20 " "
261	Mechanic Falls.....	6.05 " "	11.45 " "
265	Empire Road.....	6.20 " "	12.00 NOON
Depart	6.35 " "	12.13 P. M.
	BANGORDepart	7.30 A. M.
270	Danville Junction.....	6.50 A. M.	12.30 P. M.
275	New Gloucester.....	7.08 " "	12.50 " "
279	Pownal.....	7.29 " "	1.03 " "
282	North Yarmouth.....	7.30 " "	1.15 " "
285	Yarmouth Junction.....	7.38 " "	1.22 " "
286	Yarmouth.....	7.40 " "	1.26 " "
288	Cumberland.....
292	Falmouth.....	7.59 " "	1.45 " "
297	PORTLANDArrive	8.17 A. M.	2.05 P. M.
	PORTLANDDepart	2.50 P. M.
	BOSTONArrive	8.00 P. M.

6.00 A. M.
6.30 " "
6.45 " "
7.15 " "
7.35 " "
7.40 " "
8.00 " "
8.10 " "
8.30 " "
8.50 " "
9.20 " "
9.35 " "
10.00 " "
10.10 " "
10.35 " "
10.55 " "
11.10 " "
11.20 " "
11.40 " "
12.00 NOON
12.20 P. M.
12.30 " "
12.45 " "
12.55 " "
1.05 " "
1.30 P. M.

* Trains do not stop unless Signalled.

MONTREAL TO TORONTO.

[May 21.]

TOTAL MILES.	STATIONS.	Express.	Express.	Local Trains.	Local Trains.
	MONTREAL Depart	9.10 A.M.	9.00 P. M.	6.45 A. M.	5.15 P. M.
	2 Tanneries Junction.....	9.20 "	9.10 "	6.55 "	5.25 "
14	Pointe Claire.....		9.40 "	7.40 "	6.20 "
21	St. Anne's.....			8.05 "	6.50 "
24	Vaudreuil.....			8.20 "	7.10 "
29	Cedars.....			*8.40 "	*7.42 "
34	River Rouge.....			*9.05 "	*8.17 "
37	Coteau Landing.....			9.20 "	8.40 "
43	Riv. Beaudette.....			*9.46 "	*9.10 "
53	Lancaster.....	*11.30 "	*11.16 "	10.37 "	10.10 "
67	CORNWALL } Arrive	12.00 NOON.	11.50 "	11.45 "	11.30 "
	} Depart	12.15 P. M.	12.00 Midn't	12.25 P. M.	12.10 A. M.
72	Moulinette.....	12.40 "		1.30 "	1.10 "
77	Dickinson's Landing.....			*2.00 "	*1.40 "
81	Farran's Point.....		12.40 A. M.	2.07 "	1.45 "
83	Aultsville.....	12.55 "		3.00 "	2.40 "
92	Williamsburg.....	1.17 "		3.37 "	3.20 "
99	Matilda.....	1.32 "		4.10 "	4.30 "
104	Edwardsburgh.....	*1.45 "	1.30 "	4.53 "	5.00 "
112	Prescott Junction.....	2.05 "	1.50 "	5.05 "	
113	Prescott.....	*2.25 "		5.36 "	<u>6.00 A. M.</u>
120	Maitland.....	2.37 "	2.26 "	6.00 "	
125	Brockville.....	2.47 "		6.20 "	
129	Lyn.....	*3.11 "	3.00 "	7.05 "	
137	Mallorytown.....	3.35 "		7.45 "	
146	Lansdowne.....	4.02 "		8.30 "	
155	Gananoque.....				
168	Kingston Mills.....			10.00 P. M.	
172	KINGSTON... } Arrive	4.50 "	4.30 "	6.45 A. M.	
	} Depart	5.10 "		7.55 "	
187	Ernestown.....	6.22 "	5.42 "	8.47 "	
198	Napanee.....	*6.45 "		9.25 "	
206	Tyendinaga.....	7.02 "		9.53 "	
213	Shannonville.....	7.23 "	6.44 "	10.25 "	
220	Belleville.....	7.56 "	7.15 "	11.18 "	
231	Trenton.....	8.22 "	*7.40 "	12.02 P. M.	
241	Brighton.....	*8.42 "	*8.00 "	12.38 "	
248	Colborne.....	*9.00 "	*8.18 "	1.11 "	
256	Grafton.....	9.20 "	8.40 "	1.50 "	
263	COBOURG. } Arrive	9.35 "	9.00 "	2.05 "	
	} Depart	9.53 "	9.17 "	2.40 "	
270	Port Hope.....		*9.45 "	3.30 "	
280	Newtonville.....		10.01 "	3.58 "	
285	Newcastle.....	10.35 "	10.13 "	4.15 "	
290	Bowmanville.....	10.48 "	10.40 "	5.02 "	
290	Oshawa.....	11.14 "	10.51 "	5.23 "	
303	Port Whitby.....	11.25 "	11.09 "	5.53 "	
310	Duffin's Creek.....		11.15 "	6.04 "	
312	Frenchman's Bay.....		11.27 "	6.25 "	
316	Port Union.....	12.00 Midn't	11.43 "	6.50 "	
322	Scarboro'.....	12.40 A. M.	12.10 P. M.	7.25 "	
331	Don.....	12.50 A. M.	12.20 P. M.	7.35 P. M.	
333	TORONTO Arrive				

The Train from Montreal on Saturday night lays over at Belleville till Monday morning.

Refreshment Rooms at Cornwall, Kingston, Cobourg and Toronto.

TORONTO to DETROIT and CHICAGO. [May 8.

TOTAL MILES.	STATIONS.	Ex. ress.	Express.	Buffalo Express.	Buffalo Express.	Mail.
	TORONTO...Dep	1.00 A. M.	7.30 A. M.			3.15 P. M.
5	Carlton.....		7.50 "			3.26 "
8	Weston.....		8.10 "			3.35 "
15	Malton.....		8.28 "			4.07 "
21	Brampton.....	2.00 "	8.45 "			4.20 "
26	Norval.....		8.50 "			4.26 "
29	Georgetown.....					*4.34 "
32	Lime House.....		9.10 "			4.42 "
35	Acton West.....		9.26 "			4.56 "
41	Rockwood.....	3.00 "	9.26 "			5.15 "
48	Guelph.....	3.17 "	9.47 "			5.40 "
58	Breslau.....		10.15 "			5.52 P. M.
62	Berlin.....	3.52 "	10.27 "			5.55 P. M.
	Berlin..... Dep		10.35 A. M.			6.25 "
	Doon..... Ar		11.05 "			6.09 P. M.
68	Petersburgh.....		10.55 A. M.			6.17 "
72	Baden.....		11.03 "			6.25 "
75	Hamburgh.....	4.25 "	*11.23 "			6.43 "
82	Shakespeare.....		11.40 "			7.00 "
83	STRATFORD } Ar	5.00 "	12.00 NOON	5.15 A. M.	7.10 P. M.	7.00 "
	} De	5.00 "	12.25 P. M.	5.40 "	7.32 "	7.25 P. M.
98	St. Marys.....	5.25 "	12.30 P. M.			7.32 P. M.
	St. Mary's... De	7.45 A. M.	1.00 "			8.05 "
110	Thorndale.....	8.20 "	1.30 P. M.			8.30 P. M.
120	London..... Arr	8.55 "				
	St. Mary's.....	5.25 A. M.	12.25 P. M.	5.40 A. M.	7.32 P. M.	
98	St. Mary's.....					
108	Granton.....		1.04 "			
113	Lucan.....		1.20 "		8.20 "	
120	Craigs.....	6.18 "	1.40 "			
128	Park Hill.....		1.58 "			
136	Widder.....		2.20 "		9.15 "	
145	Forrest.....	7.20 "		7.55 "	9.30 "	
154	Camlachie.....	7.42 "		8.30 "	10.00 "	
168	SARNIA.....	8.15 "	3.15 "	8.30 "	0.00 "	6.30 A. M.
	PORT HURON.....	8.30 "	3.15 "	8.30 "		7.07 "
10	Smith's Creek.....		4.07 "	9.17 "		7.45 "
21	Ridgeway.....	9.17 "	4.20 "			8.10 "
27	New Baltimore.....		4.45 "	9.54 "		8.50 "
37	Mount Clemens.....	9.54 "				9.11 "
42	Utica Plank.....					10.00 "
54	Milwaukee Junc.....	10.30 "		10.30 "		10.20 "
59	Detroit Junction.....	10.45 "	5.40 "	10.45 "	11.45 "	11.00 "
62	DETROIT..... Arr	11.00 A. M.	5.55 P. M.	11.00 A. M.	12.00 Night	11.00 A. M.
	DETROIT Jun.D	11.00 A. M.	5.40 P. M.	11.00 A. M.		11.00 A. M.
	CHICAGO...Ar	11.00 P. M.	6.00 A. M.	11.00 P. M.		11.00 P. M.

Between Toronto and Sarnia, Toronto Time. Port Huron and Chicago, Chicago Time.
Refreshment Rooms at Toronto, Stratford, Sarnia, and Detroit Junction.

MONTREAL to LACHINE and PROVINCE LINE. [June 12.

Miles.	STATIONS.	A. M.	A. M.	NOON.	Plattsburgh Mail.	P. M.	P. M.
	MONTREAL..... Dep	7.00	9.00		3.00	5.00	6.30
8	Lachine.....	7.30	9.30	12.30 P. M.	3.30	5.30	7.00
10	Caughnawaga.....				4.00		
15	St. Isidore.....				4.20		
21	St. Remi.....				4.45		
25	Lapigeoniere.....				5.00		
32	Johnsons.....				5.30		
36	Hemmingford.....				5.45		
40	PROVINCE LINE...Ar				6.00		

NOTE.—The train leaving Montreal at 3.00 P. M. arrives at Plattsburgh at 7.15 P. M.
* Flag Stations.

CHICAGO and DETROIT to TORONTO. [May 8.

Mail.
3.15 P.M.
3.26 "
3.35 "
3.50 "
4.07 "
4.20 "
4.26 "
4.34 "
4.42 "
4.56 "
5.15 "
5.40 "
5.52 P.M.
5.55 P.M.
6.25 "
6.09 P.M.
6.17 "
6.25 "
6.43 "
7.00 "
7.00 "
7.25 P.M.
7.32 P.M.
8.05 "
8.30 P.M.
6.30 A.M.
7.07 "
7.45 "
8.10 "
8.50 "
9.11 "
10.00 "
10.20 "
11.00 A.M.
11.00 A.M.
11.00 P.M.

TOTAL MILES.	STATIONS.	Express.	Express.	Buffalo Express.	Buffalo Express.	Mail.
	CHICAGOD	5.30 P. M.	6.00 A. M.	10.00 P. M.		
	DETROIT J.....A	5.55 A. M.	5.30 P. M.	9.45 A. M.		
	DETROITD	6.15 A. M.	5.15 P. M.	10.05 A. M.		
3	Detroit Junction.....	6.30 "	5.40 "	10.20 "		
8	Milwaukee Junc.....			10.30 "		
19	Utica Plank.....	7.05 "	6.20 "			
25	Mount Clemens.....	7.15 "	6.32 "			
35	New Baltimore.....	7.36 "	6.58 "			
41	Ridgeway.....	7.45 "	7.11 "	11.35 "		
51	Smith's Creek.....	8.09 "	7.36 "			
62	PORT HURON.....	8.30 "	8.00 "			
76	SARNIA.....	9.30 "	9.00 "	12.15 P. M.		
63	Camlachie.....	*10.04 "	9.40 "	1.15 "	8.50 P. M.	
85	Forrest.....	10.27 "	10.05 "	2.20 "	9.30 "	
94	Widder.....	10.50 "	10.33 "			
103	Park Hill.....	11.11 "			10.09 "	
110	Craigs.....	11.30 "	11.18 "			
117	Lucan.....	11.47 "				
123	Granton.....	*12.00 "				
132	St. Marys.....Arr	12.25 P. M.	12.22 A. M.	3.55 P. M.	11.28 P. M.	
	LONDON...De	11.25 A. M.		2.45 P. M.		6.45 A. M.
10	Thorndale.....	11.50 P. M.		3.25 "		7.10 "
22	St. Marys...Arr	12.20 "		3.50 P. M.		7.45 "
132	St. Marys.....De	12.25 P. M.	12.22 A. M.	3.55 P. M.	11.28 P. M.	7.45 A. M.
143	STRATFORD } Ar	12.50 "	12.50 "	4.20 "	11.50 "	8.08 "
	} De	1.10 "	12.50 "			8.08 "
149	Shakespeare.....					8.24 "
156	Hamburgh.....	1.45 "				8.40 "
159	Baden.....					8.47 "
162	Petersburgh.....					8.55 "
	Doon.....De		5.00 P. M.			8.30 A. M.
	Berlin.....Ar		5.30 "			9.00 "
168	Berlin.....	2.18 P. M.	1.58 A. M.			9.11 A. M.
173	Breslau.....		2.10 "			9.22 "
183	Guelph.....	2.55 "	2.37 "			9.47 "
190	Roekwood.....		3.00 "			10.05 "
196	Aeton.....	3.30 "				10.20 "
202	Georgetown.....	3.45 "	3.35 "			10.35 "
204	Norval.....					10.41 "
210	Brampton.....	4.07 "	4.00 "			10.55 "
216	Malton.....	4.22 "				11.10 "
223	Weston.....	4.38 "				11.25 "
226	Carlton.....					11.34 "
231	TORONTO.....Arr	5.00 P. M.	5.00 A. M.			11.46 A. M.

* Flag Stations.
Refreshment Rooms at Detroit Junction, Sarnia, Stratford and Toronto.

PROVINCE LINE to LACHINE and MONTREAL.

ICE LINE.
[June 12.

P. M.	P. M.
5.00	6.30
5.30	7.00

Miles.	STATIONS.	Plattsburgh Mail.				
	PROVINCE LINE ...D	A. M.				
3	Hemmingford.....	7.30				
7	Johnsons.....	7.45				
14	Lapigeoniere.....	8.00				
18	St. Remi.....	8.30				
24	St. Isidore.....	8.46				
29	Caughnawaga.....	9.10				
31	Lachine.....	A. M.	9.30	P. M.	P. M.	P. M.
		8.00	10.00	1.00	4.30	6.00
40	MONTREAL.....Arr	8.30	10.30	1.30	5.00	6.30
		A. M.	A. M.	P. M.	P. M.	P. M.

NOTE.—The train arriving at Montreal at 10.30 A.M. leaves Plattsburgh at 6.00 A.M.

NEW YORK AND BUFFALO TO DETROIT AND CHICAGO.

TOTAL MILES.	STATIONS.	Express.	Express.	Express.
	NEW YORKDepart	7.30 A. M.		6.00 P. M.
	BUFFALOArrive	12.00 Night		1.45 "
	BUFFALODepart	12.30 A. M.	7.00 A. M.	2.15 P. M.
2	FORT ERIE }Arrive	12.30 "	7.00 "	2.15 "
9	Bertie.....Depart	12.35 "	7.05 "	2.20 "
13	Shirk's.....Depart		*7.21 "	
19	PT. COLBORN }Arrive	1.14 "	*7.30 "	
24	Wainfleet.....Depart	1.15 "	7.45 "	2.57 "
30	Boulton Ditch.....Depart		7.47 "	2.58 "
32	Feeder.....Depart		*8.00 "	
38	DUNNVILLE }Arrive	1.43 "	8.20 "	3.27 "
46	Canfield.....Depart	1.55 "	8.35 "	3.40 "
51	Cook's.....Depart	2.03 "	8.43 "	3.45 "
59	Caledonia.....Depart	2.21 "	9.02 "	4.03 "
65	Middleport.....Depart			
68	Onondaga.....Depart			
72	Cainsville.....Depart		*9.52 "	
75	BRANTFORD }Arrive	3.26 "	10.10 "	5.07 "
83	PARIS }Depart	3.36 "	10.18 "	5.12 "
89	Richwood.....Arrive	3.56 "	10.38 "	5.32 "
92	Drumbo.....Depart	4.00 "	10.43 "	5.37 "
97	Plattsville.....Depart		*10.57 "	
100	Ratho.....Depart		11.04 "	
107	Tavistock.....Depart		11.17 "	6.11 "
115	STRATFORD }Arrive	5.15 "	*11.24 "	
125	St. Marys.....Depart	5.15 "	11.41 "	
155	Granton.....Depart	5.40 "	12.00 NOON	7.00 "
140	Lucan.....Depart		12.00 "	7.10 "
147	Craigs.....Depart			7.32 "
155	Park Hill.....Depart			8.20 "
164	Widder.....Depart		1	
173	Forrest.....Depart		1.58 "	
182	Camlachie.....Depart		2.20 "	9.15 "
195	SARNIADepart	7.55 "		9.30 "
196	PORT HURONDepart	8.30 "	3.15 "	10.00 "
217	Ridgeway.....Depart	8.30 "	3.15 "	10.00 "
223	New Baltimore.....Depart	9.17 "	4.07 "	
233	Mt. Clemens.....Depart		4.20 "	
255	Detroit Junction.....Depart	9.54 "	4.45 "	
258	DETROITArrive	10.45 "	5.40 "	11.45 "
	DETROIT JUNCTIONDepart	11.00 A. M.	5.55 P. M.	12.00 Mdngr
	CHICAGOArrive	10.45 A. M.	5.40 P. M.	
		11.00 P. M.	6.00 A. M.	

* Flag Stations.

Arthabaska to Three Rivers.

MILES.	STATIONS.	Mixed.
	ARTHABASKA Ju'n...De	7.00 AM
4	Walker's Cutting.....	7.20 "
11	Bulstrode.....	7.44 "
18	Aston.....	8.12 "
25	St. Celestin.....	8.40 "
31	St. Gregoire.....	9.04 "
35	DOUCET'S LANDING, (opposite Three Rivers)..Ar	9.24 AM

Three Rivers to Arthabaska. [June 26.]

MILES.	STATIONS.	Mixed.
	DOUCET'S LANDING, (opposite Three Rivers)..De	4.30 P.M
4	St. Gregoire.....	4.50 "
10	St. Celestin.....	5.14 "
17	Aston.....	5.42 "
24	Bulstrode.....	6.10 "
30	Walker's Cutting.....	6.34 "
35	ARTHABASKA Ju'n...Ar	6.54 PM

Miles	STATIONS.
6	MON St. La
11	Brosse
19	Lacad
26	ST. JO
32	Grand
38	Stottsv
42	Lacolle
49	ROUS

AGO.

CHICAGO AND DETROIT TO BUFFALO AND NEW YORK.

Express.

6.00	P. M.
1.45	"
2.15	P. M.
2.15	"
2.20	"
2.57	"
2.58	"
3.27	"
3.40	"
3.45	"
4.03	"
5.07	"
5.12	"
5.32	"
5.37	"
6.11	"
7.00	"
7.10	"
7.32	"
8.20	"
9.15	"
9.30	"
0.00	"
0.00	"
1.45	"
2.00	Mdngt

TOTAL MILES.	STATIONS.	Express.		
		Express.	Express.	Express.
	CHICAGO	Dep		
	DETROIT	Arrive	5.30 P. M.	
	DETROIT JUNCTION	Depart	5.55 A. M.	
3	Detroit Junction.....	Depart	6.15 A. M.	10.00 P. M.
25	Mount Clemens.....		6.30 "	9.45 A. M.
35	New Baltimore.....		7.15 "	10.05 A. M.
41	Ridgeway.....		7.36 "	10.20 "
62	PORT HURON		7.45 "	
63	SARNIA.....		8.30 "	11.35 "
76	Camlachie.....		9.30 "	12.15 P. M.
85	Forrest.....		*10.04 "	1.15 "
94	Widder.....		10.27 "	2.20 "
103	Park Hill.....		10.50 "	
110	Craigs.....		11.11 "	
117	Lucan.....		11.30 "	
123	Granton.....		11.47 "	
132	St. Marys.....		12.00 "	
143	STRATFORD	Arrive	12.25 P. M.	
151	Tavistock.....	Depart	12.50 "	3.55 "
159	Ratho.....		1.10 "	4.20 "
161	Plattsville.....		*1.27 "	4.15 "
166	Drumbo.....		1.35 "	
169	Richwood.....		1.48 "	
175	PARIS	Arrive	*1.55 "	
183	BRANTFORD	Depart	2.10 "	5.32 "
186	Cainsville.....	Arrive	2.15 "	5.37 "
191	Onondaga.....	Depart	2.35 "	5.57 "
193	Middleport.....		2.45 "	6.07 "
200	Caledonia.....		*3.05 "	
207	Cook's.....		*3.11 "	6.30 "
212	Canfield.....		3.27 "	
220	DUNNVILLE	Arrive	4.03 "	
226	Feeder.....	Depart	4.23 "	7.12 "
228	Boulton Ditch.....		4.28 "	7.30 "
234	Wainfleet.....		4.42 "	7.45 "
239	PORT COLBORNE	Arrive	*5.00 "	8.00 "
245	Shirk's.....	Depart	5.13 "	8.32 "
249	Bertie.....		5.15 "	8.35 "
257	PORT ERIE	Arrive	*5.40 "	
259	BUFFALO	Depart	5.58 "	9.13 "
	BUFFALO	Arrive	6.00 "	9.15 "
	NEW YORK	Arrive	6.45 P. M.	10.00 P. M.
				10.40 P. M.
				4.30 P. M.
				10.25 P. M.

* Flag Stations.

Montreal to Rouse's Point.

Miles.	STATIONS.	Exp.	Exp.	Exp'r's
	MONTREAL	De	A. M.	P. M.
6	St. Lambert.....		5.45	8.30
11	Brosseaus.....		6.08	8.55
19	Lacadie.....		9.15	4.10
26	ST. JOHNS	Arri	9.35	4.30
Dep	6.55	9.50
32	Grande Ligne.....		A. M.	4.50
38	Stottsville.....		7.15	5.05
42	Lacolle.....			5.20
49	ROUSE'S P'T.	Ar	7.40	5.30
			A. M.	5.45
				P. M.

Rouse's Point to Montreal.

Miles.	STATIONS.	Exp	Exp.	Exp'r's
	ROUSE'S P'T.	De	A. M.	P. M.
6	Lacolle.....		6.45	9.00
10	Stottsville.....		7.05	
16	Grande Ligne.....		7.15	
23	ST. JOHNS	Ar	7.35	
De	8.00	P. M.
29	Lacadie.....		8.05	8.05
38	Brosseaus.....		8.20	8.20
43	St. Lambert.....		8.40	8.40
49	MONTREAL	Ar	9.05	8.55
			9.30	9.20
			A. M.	P. M.
				10.32
				10.55
				P. M.

June 26.

Mixed.
4.30
4.50
5.14
5.42
6.10
6.34
6.54

June 26.

BUFFALO TO GODERICH.

[May 8.

TOTAL MILES.	STATIONS.	Express.	Express.	Express.	Local.	Local
	BUFFALO Dep	12.30 A. M.	7.00 A. M.	2.15 P. M.	1.30 P. M.	
2	FORT ERIE { Ar	12.30 "	7.00 "	2.15 "	1.30 "	
	De	12.35 "	7.05 "	2.20 "	1.45 "	
9	Bertie		*7.21 "		2.15 "	
13	Shirk's		*7.30 "		*2.30 "	
19	PT. COLB'RN { Ar	1.14 "	7.45 "	2.57 "	2.55 "	
	De	1.15 "	7.47 "	2.58 "	3.00 "	
24	Wainfleet		*8.00 "		*3.20 "	
30	Boulton Ditch					
32	Feeder	1.43 "	8.20 "	3.27 "	3.50 "	
38	DUNNVILLE { Ar	1.55 "	8.35 "	3.40 "	4.15 "	
	De	2.03 "	8.43 "	3.45 "	4.30 "	
46	Canfield	2.21 "	9.02 "	4.03 "	5.00 "	
51	Cook's				5.25 "	
59	Caledonia		9.31 "		6.00 "	
65	Middleport				6.30 "	
68	Onondaga		*9.52 "		*6.43 "	
72	Cainsville				*7.00 "	
75	BRANTFORD { Ar	3.26 "	10.10 "	5.07 "	7.15 P. M.	
	De	3.36 "	10.18 "	5.12 "	7.30 A. M.	
83	PARIS { Ar	3.56 "	10.38 "	5.32 "	8.10 "	
	De	4.00 "	10.43 "	5.37 "	8.30 "	
89	Richwood		*10.57 "		9.00 "	
92	Drumbo		11.04 "		9.18 "	
97	Plattsville		11.17 "	6.11 "	9.50 "	
100	Ratho		*11.24 "		10.00 "	
107	Tavistock		11.41 "		10.30 "	
115	STRATFORD { Ar	5.15 A. M.	12.00 Noon.	7.00 "	11.00 A. M.	
	De		1.30 P. M.		3.30 P. M.	8.30 A. M.
128	Mitchell		2.30 "		4.30 "	9.30 "
133	Carron Brook		2.55 "		5.10 "	9.55 "
139	Seaforth		3.30 "		5.50 "	10.25 "
141	Harpurhey					
147	Clinton		4.00 "		6.30 "	11.00 "
160	GODERICH Ar		5.00 P. M.		7.30 P. M.	12.00 Noon

* Flag Stations.

Refreshment Rooms at Buffalo, Stratford, and Goderich.

HUDSON RIVER and NEW YORK CENTRAL RAILWAYS.

Hudson River Railway Trains are run by Poughkeepsie Time. [June 5.

BUFFALO TO NEW YORK.

Miles	STATIONS.	Express.	Express.	Express.	Express.	Express.
	BUFFALO Depart	5.00 A. M.	8.00 A. M.	3.00 P. M.	6.00 P. M.	10.40 P. M.
37	Batavia	6.10 "	9.10 "	4.30 "	7.25 "	11.55 "
52	Bergen		9.42 "	5.07 "		
69	Rochester {	7.20 "	10.25 "	6.00 "	8.40 "	
	Arrive	7.55 "	10.35 "	6.00 "	9.00 "	1.05 A. M.
	Leave			11.00 "		
150	Syracuse {		1.35 P. M.	11.00 "	12.10 A. M.	2.55 "
	Arrive	10.20 "	2.00 "		2.15 "	5.45 "
	Leave	12.15 P. M.	4.10 "	1.15 A. M.	5.25 "	8.50 "
281	Schenectady	3.20 "	6.50 "	4.20 "		
	Troy {	4.15 P. M.	7.40 P. M.		6.10 A. M.	9.25 A. M.
	Arrive	4.30 "	10.00 "		6.20 A. M.	10.30 "
	Leave			5.00 A. M.	6.15 A. M.	9.10 A. M.
298	West Albany..... Arrive	4.00 P. M.	7.30 P. M.	5.15 "	6.45 "	11.00 "
325	East Albany..... Leave	4.55 "	10.45 "	6.18 "	7.45 "	12.05 P. M.
325	Hudson.....	6.00 "	12.07 A. M.	7.55 "	9.20 "	1.40 "
337	Poughkeepsie.....	7.45 "	2.15 "	9.15 "	10.38 "	2.50 "
399	Peekskill.....	8.53 "	3.55 "	11.00 A. M.	12.30 P. M.	5.00 P. M.
442	CHAMBER St. N. Y. Ar	10.55 P. M.	6.30 A. M.			

GODERICH TO BUFFALO.

[May 8.]

TOTAL MILES.	STATIONS.	Express.	Express.	Express.	Local.	Local.
	GODERICH...De	9.00 A. M.			12.00 Noon	3.00 P. M
12	Clinton.....	9.50 " "			1.00 P. M.	4.00 " "
17	Harpurhey.....					
21	Seaforth.....	10.25 " "			1.50 " "	4.40 " "
27	Carron Brook.....	10.50 " "			2.10 " "	5.10 " "
32	Mitchell.....	11.15 " "			2.30 " "	5.45 " "
45	STRATFORD } Ar	12.00 NOON.			3.30 " "	6.45 P. M.
	De	12.50 P. M.	4.15 P. M.	11.50 P. M.	4.45 P. M.	
53	Tavistock.....	1.10 " "			5.25 " "	
60	Ratho.....	*1.27 " "			5.50 " "	
63	Plattsville.....	1.35 " "			6.11 " "	
68	Drumbo.....	1.48 " "			6.37 " "	
71	Richwood.....	*1.55 " "			6.47 " "	
77	PARIS..... } Ar	2.10 " "	5.32 " "	12.56 A. M.	7.10 " "	
	De	2.15 " "	5.37 " "	12.58 " "	7.20 " "	
85	BRANTFORD } Ar	2.35 " "	5.57 " "	1.16 " "	8.00 P. M.	
	De	2.45 " "	6.07 " "	1.22 " "	6.00 A. M.	
88	Caiusville.....				*6.15 " "	
92	Onondaga.....	*3.05 " "			*6.35 " "	
95	Middleport.....	*3.11 " "	6.30 " "		*6.43 " "	
101	Caledonia.....	3.27 " "			7.15 " "	
109	Cook's.....	*3.46 " "			7.45 " "	
114	Canfield.....	4.03 " "	7.12 " "	2.21 " "	8.10 " "	
122	DUNNVILLE } Ar	4.23 " "	7.30 " "	2.36 " "	8.35 " "	
	De	4.28 " "	7.45 " "	2.41 " "	8.45 " "	
128	Feeder.....	4.42 " "	8.00 " "	2.53 " "	9.10 " "	
130	Boulton Ditch.....					
135	Wainfleet.....	*5.00 " "			*9.40 " "	
141	P'T COLBO'NE } A	5.13 " "	8.32 " "	3.20 " "	10.00 " "	
	D	5.15 " "	8.35 " "	3.22 " "	10.10 " "	
147	Shirk's.....				*10.30 " "	
151	Bertie.....	*5.40 " "			*10.45 " "	
158	FORT ERIE.. } Ar	5.58 " "	9.13 " "	3.56 " "	11.15 " "	
	De	6.00 " "	9.15 " "	4.00 " "	11.20 " "	
160	BUFFALO... Arr	6.45 P. M.	10.00 P. M.	4.45 A. M.	12.15 P. M.	

* Flag Stations.

TRAL

[June 5.]

Express.
8.30 A. M.
9.30 " "
9.55 " "
10.25 " "
11.00 " "
12.00 Noon

HUDSON RIVER and NEW YORK CENTRAL RAILWAYS.

New York Central Railway Trains are run by Albany Time.

[June 5.]

NEW YORK TO BUFFALO.

Miles	STATIONS.	Express.	Express.	Express.	Express.
	CHAMBER ST, New York.....Dep	7.00 A. M.	1.30 P. M.	5.30 P. M.	10.00 P. M.
43	Peekskill.....	8.53 " "	3.31 " "	7.33 " "	12.51 A. M.
75	Poughkeepsie.....	10.06 " "	4.50 " "	9.00 " "	2.30 " "
116	Hudson.....	11.32 " "	6.25 " "	10.31 " "	4.46 " "
144	East Albany.....Ar	12.35 P. M.	7.30 " "	11.25 " "	6.15 " "
	West ".....Leave	1.00 " "	11.15 " "		8.45 " "
150	Troy }.....Arrive	12.55 P. M.	7.50 P. M.	12.00 night	6.40 A. M.
	Leave			12.10 A. M.	
161	Schenectady.....	1.50 P. M.	12.00 mid't	1.10 A. M.	9.30 A. M.
239	Utica.....	4.45 " "	3.40 A. M.	4.40 " "	12.20 P. M.
292	Syracuse. }.....Arrive	6.40 " "	6.10 " "	7.50 " "	2.20 " "
	Leave	6.40 " "	6.10 " "	7.00 " "	2.45 " "
373	Rochester }.....Ar	9.35 " "	10.00 A. M.	10.30 " "	6.00 " "
	Leave	9.35 " "		10.30 " "	6.00 " "
390	Bergen.....				6.53 " "
405	Batavia.....				7.35 " "
442	Buffalo.....Ar	10.40 " "	12.00 mid't	12.15 P. M.	9.00 P. M.

OTTAWA AND PRESCOTT RAILWAY.

Trains are run by Montreal Time.

OTTAWA TO PRESCOTT.

PRESCOTT TO OTTAWA.

MILES.	STATIONS.	Mail.	Accommodation.
	OTTAWA.....Dep	7.00 AM	1.30 P M
5	Billings	7.15	1.50
10	Glooucester	7.30	2.10
16	Rossiters	7.46	2.33
19	Kelly's	7.54	2.45
22	Osgoode..... { ..Arri		
	{ ..Dep	8.02	2.57
31	Kemptville.. { ..Arri		
	{ ..Dep	8.25	3.30
27	Oxford	8.43	3.54
41	Doyle's	8.55	4.10
44	Spencerville	9.05	4.24
52	Prescott Junction...	9.25	4 52
54	PRESCOTT.....Ar	9.35 AM	5.00 P M

MILES.	STATIONS.	Mail.	Accommodation.
	PRESCOTT...Dep	2.15 P M	6.45 A M
2	Prescott Junction....	2 25	6.55
9	Spencerville	2.55	7.23
12	Doyle's	3.04	7.47
16	Oxford	3.13	8.02
22	Kemptville.. { ..Arri	3.30	
	{ ..Dep	3.30	8.25
31	Osgoode..... { ..Arri		
	{ ..Dep	3.54	8.58
34	Kelly's.....	4.02	9 10
37	Rossiters.....	4.10	9.22
42	Glooucester	4.26	9.46
48	Billings	4.40	10.06
54	OTTAWA.....Ar	5.00 P M	10.30 AM

MICHIGAN CENTRAL RAILWAY.

Trains are run by Chicago Time.

DETROIT to CHICAGO.

CHICAGO to DETROIT.

Miles	STATIONS.	Day Expre's	Ev'ng Expre's	Night Expre's
	DETROIT...dep	10.30 AM	5.25 PM	11.00 PM
3	G. Trunk Junc.	10.45 "	5.40 "	11.15 "
37	Ann Arbor.....	12.15 PM	7 10 "	1.05AM
76	Jackson	1.50 "	8.55 "	2.55 "
107	Marshall	3.30 "	10.20 "	4.15 "
143	Kalamazoo....arr	5.05 "	11.50 "	5.50 "
143	" ..dep	5.05 "	11.50 "	5.50 "
218	New Buffalo....	8.15 "	3.05 AM	9.20 "
228	Michigan City arr	8.40 "	3.40 "	9.45 "
228	" ..dep	8.40 "	3.40 "	9.45 "
248	Lake Station ...	9.30 "	4.30 "	10.35 "
269	Calumet.....	10.20 "	5.20 "	11.45 "
284	CHICAGO...arr	11.00 PM	6.00 AM	12.30 PM

Miles	STATIONS.	Day Expre's	Ev'ng Expre's	Night Expre's
	CHICAGO...dep	6.00 AM	5.30 PM	10.00 PM
15	Calumet	6.40 "	6.10 "	10.40 "
36	Lake Station ...	7.25 "	6.55 "	11.30 "
56	Michigan City arr	8.15 "	7.45 "	12.25 AM
56	" ..dep	8.15 "	7.45 "	12.25 "
66	New Buffalo....	8.40 "	8.15 "	12.50 "
141	Kalamazoo....arr	11.40 "	11.50 "	3.55 "
141	" ..dep	11.40 "	11.50 "	3.55 "
177	Marshall	1.25 PM	1.30 AM	5.20 "
208	Jackson	2.40 "	2.55 "	6.45 "
247	Ann Arbor.....	4.05 "	4.30 "	8.20 "
281	G. Trunk Junc...	5.30 "	5.55 "	9.45 "
284	DETROIT...arr	5.45 PM	6.10 AM	10.00 AM

MICHIGAN SOUTHERN RAILWAY.

Trains are run by Chicago Time.

DETROIT TO CHICAGO.

CHICAGO TO DETROIT.

Miles	STATIONS.	Express.	Express.
	DETROIT.....Dep	10.45 A M.	11.15 P. M.
8	Grand Trunk Junc.	11.14 "	11.43 "
40	Monroe Junction...	12.37 P. M.	1.05 A. M.
73	Adrian.....	2.05 "	3.57 "
107	Hillsdale.....	3.20 "	5.14 "
165	White Pigeon.....	5.52 "	7.30 "
183	Elkhart.....	6.53 "	8.25 "
225	Laporte.....	8.37 "	9.59 "
284	CHICAGO.....Arr	11.00 P. M.	12.30 P. M.

Miles	STATIONS.	Express.	Express.
	CHICAGO.....Dep	6.00 A. M.	5.30 P. M.
58	Laporte.....	8.25 "	8.00 "
101	Elkhart	10.20 "	9.51 "
119	White Pigeon.....	11.05 "	10.44 "
177	Hillsdale.....	1.15 P. M.	1.09 A. M.
211	Adrian.....	2.40 "	3.10 "
244	Monroe Junction...	4.02 "	4.25 "
276	Grand Trunk Junc.	5.18 "	5.45 "
284	DETROIT.....Arr	5.45 P. M.	6.15 A. M.

EAL.

[June 26,

Mixed

A. M. 9.00

9.30

9.45

10.10

10.35

10.45

11.10

11.40

12.10

12.25

12.40

1.00

1.30

1.50

2.25

P. M.

A. M.

10.00

11.00

11.55

12.35

1.20

1.55

2.35

2.50

3.10

3.50

4.35

4.55

5.20

5.25

6.05

6.15

P. M.

P. M.

1.00

1.00

1.10

1.30

1.43

2.00

2.26

2.45

2.58

3.18

3.30

3.48

4.10

4.35

4.50

5.03

5.20

5.46

6.09

6.29

6.46

7.03

7.23

7.45

8.23

P. M.

days & Sat'days

ing at Riviere

A. M., arriving

CONDENSED

New York and Buffalo to Detroit and Chicago.

NEW YORK	Leave	7.30 A. M.	6.00 P. M.
BUFFALO	Arrive	12.00 Night	1.45 "
BUFFALO	Leave	12.30 A. M.	2.15 "
DETROIT JUNCTION	Arrive	10.45 A. M.	11.45 P. M.
DETROIT JUNCTION	Leave	10.45 "	
CHICAGO	Arrive	11.00 P. M.	

Montreal and Toronto to Detroit and Chicago.

MONTREAL	Leave	9.10 A. M.	9.00 P. M.
TORONTO	Leave	1.00 A. M.	3.15 "
DETROIT JUNCTION	Arrive	10.45 A. M.	11.45 P. M.
CHICAGO	Arrive	11.00 P. M.	

Quebec and Portland to Detroit and Chicago.

BOSTON	Leave	7.30 A. M.	3.00 P. M.
PORTLAND	Arrive	12.30 P. M.	8.00 "
PORTLAND	Leave	1.25 P. M.	7.00 A. M.
ISLAND POND	Leave	10.00 P. M.	2.30 P. M.
RICHMOND	Arrive	1.50 A. M.	5.25 "
RIVIERE DU LOUP	Leave	3.00 P. M.	5.00 A. M.
QUEBEC	Arrive		
QUEBEC	Leave	8.00 "	1.30 P. M.
RICHMOND	Arrive	1.30 A. M.	5.25 P. M.
RICHMOND	Leave	2.20 A. M.	5.40 P. M.
MONTREAL	Arrive	6.35 "	8.50 "
MONTREAL	Leave	9.10 "	9.00 "
KINGSTON	Leave	5.10 P. M.	4.30 A. M.
TORONTO	Leave	1.00 A. M.	3.15 P. M.
STRATFORD	Leave	5.00 "	7.10 "
SARNIA	Leave	8.15 "	10.00 "
DETROIT JUNCTION	Arrive	10.45 A. M.	11.45 P. M.
DETROIT JUNCTION	Leave	10.45 A. M.	
CHICAGO	Arrive	11.00 P. M.	

ERIE RAILWAY.

NEW YORK TO BUFFALO.

[May 15.]

Miles	STATIONS.	Express.	Express.	Express.	Express.
	NEW YORK, Foot Chamber St. Dep	7.00 A. M.	10.00 A. M.	5.00 P. M.	6.00 P. M.
1	Jersey City	7.15 "	10.17 "	5.22 "	6.25 "
17	Peterson	7.59 "	11.03 "	6.08 "	
32	Suffern	8.32 "	11.47 "	6.48 "	
48	Turners	9.17 "	12.43 P. M.	7.47 "	8.43 "
67	Middletown	10.06 "	1.42 "	8.42 "	
88	Port Jervis	10.53 "	2.28 "	9.40 "	10.30 "
123	Narrowsburg		4.07 "		12.01 A. M.
177	Deposit	2.04 P. M.	6.31 "	1.44 A. M.	
201	Great Bend	3.26 "	7.49 "	3.00 "	
215	Binghampton	3.59 "	8.26 "	3.40 "	4.09 "
237	Owego	4.45 "	9.24 "	4.38 "	5.06 "
274	Elmira	6.05 "	11.35 "	6.30 "	6.50 "
291	Corning				7.45 "
311	Bath				8.42 "
337	Wayland				9.52 "
356	Livonia				10.45 "
367	Avon	Arrive			11.13 "
391	Batavia	Depart			11.35 "
402	Attica				12.38 P. M.
433	BUFFALO	Arr	10.45	4.38 A. M.	12.30 P. M.
			11.58 P. M.	6.10 A. M.	1.45 P. M.

CHIC
DET
BUFF
NEW

CHIC
TOR
MONT

DETR
SARN
STRAT

TORO
KING
MONT
RICH

RICH
ISLAN
PORT

Miles

31
42
66
77
96
122
142
159
196
218
232
256
310
345
366
385
401
416
432
433

B
At
Ba
Av
Liv
W
Ba
Co
El
Ow
Bin
Gre
Dep
Na
Por
Mid
Tur
Suff
Pat
Jers
N.Y.

TIME TABLES.

Chicago and Detroit to Buffalo and New York.

CHICAGO	Leave	6.00 A. M.	10.00 P. M.	5.30 P. M.
DETROIT JUNCTION {	Arrive	5.30 P. M.	9.45 A. M.	5.55 A. M.
	Leave	5.40 " "	10.20 " "	6.30 " "
BUFFALO {	Arrive	4.45 A. M.	10.00 P. M.	6.45 P. M.
	Leave	5.00 " "	10.40 " "
NEW YORK	Arrive	10.25 P. M.	4.30 P. M.

Chicago and Detroit to Toronto and Montreal.

CHICAGO	Leave	6.00 A. M.	5.30 P. M.
DETROIT JUNCTION	Leave	5.40 P. M.	6.30 A. M.
TORONTO {	Arrive	5.00 A. M.	5.00 P. M.
	Leave	6.30 A. M.	5.30 P. M.
MONTREAL	Leave	10.30 P. M.	9.30 A. M.

Chicago and Detroit to Portland and Quebec.

CHICAGO	Leave	6.00 A. M.	5.30 P. M.
DETROIT JUNCTION	Arrive	5.30 P. M.	5.55 A. M.
DETROIT JUNCTION	Leave	5.40 P. M.	6.30 A. M.
SARNIA	Leave	9.00 " "	9.30 " "
STRATFORD	Leave	12.50 A. M.	1.10 P. M.
TORONTO {	Arrive	5.00 " "	5.00 " "
KINGSTON {	Leave	6.30 " "	5.30 " "
	Leave	2.20 P. M.	1.25 A. M.
MONTREAL (Tanneries Junction) {	Arrive	10.15 " "	9.20 " "
	Leave	10.20 " "	2.10 P. M.
RICHMOND	Arrive	2.00 A. M.	5.30 " "
RICHMOND	Leave	2.15 A. M.	5.45 P. M.
QUEBEC {	Arrive	7.30 " "	10.00 " "
	Leave	8.00 A. M.
RIVIERE DU LOUP	Arrive	2.05 P. M.
RICHMOND	Leave	2.15 A. M.	5.45 P. M.
ISLAND POND	Arrive	6.30 " "	9.30 " "
PORTLAND	Arrive	2.05 P. M.	8.17 A. M.
PORTLAND	Leave	2.50 P. M.	8.40 A. M.
BOSTON	Arrive	8.00 P. M.	1.45 P. M.

ERIE RAILWAY.

BUFFALO TO NEW YORK.

[May 15.]

Miles	STATIONS.	Express.	Express.	Express.	Express.	Express.
	BUFFALO	5.00 A. M.	8.35 A. M.	4.00 P. M.	6.05 P. M.	10.45 P. M.
31	Attica	6.10 " "	9.54 " "	5.22 " "	7.13 " "	11.56 " "
42	Batavia	10.23 " "	5.50 " "
66	Avon	11.45 " "	7.32 " "
77	Livonia	12.17 P. M.	8.06 " "
96	Wayland	1.12 " "	9.11 " "
122	Bath	2.24 " "	10.24 " "
142	Corning	3.40 " "	11.20 " "
150	Elmira {	10.56 A. M.	4.18 " "	12.17 A. M.	12.17 A. M.	4.17 A. M.
196	Owego	11.06 " "	4.35 " "	12.27 " "	12.27 " "	4.24 " "
218	Binghampton	12.25 P. M.	6.23 " "	1.50 " "	1.50 " "	5.48 " "
232	Great Bend	1.11 " "	7.27 " "	2.42 " "	2.42 " "	6.37 " "
256	Deposit	1.42 " "	8.03 " "	7.10 " "
310	Narrowsburg	3.00 " "	9.50 " "	8.26 " "
345	Port Jervis	12.01 A. M.	6.27 " "	6.27 " "	10.48 " "
366	Middletown	6.28 " "	1.35 " "	8.10 " "	8.10 " "	12.17 P. M.
385	Turners	7.16 " "	9.00 " "	9.00 " "	1.04 " "
401	Suffern	8.20 " "	3.51 " "	2.05 " "
416	Paterson	8.55 " "	4.45 " "	10.24 " "	10.24 " "	2.40 " "
432	Jersey City	9.28 " "	5.32 " "	3.17 " "
433	N. York, foot Chamber St. a	10.07 " "	6.20 " "	11.36 " "	11.36 " "	3.54 " "
		10.30 P. M.	6.40 A. M.	12.00 Noon	12.00 Noon	4.10 P. M.

00 P. M.
15 " "
5 " "
15 P. M.

00 P. M.
00 " "
00 A. M.
30 P. M.
25 " "
00 A. M.
30 P. M.
25 P. M.
40 P. M.
50 " "
00 " "
30 A. M.
15 P. M.
10 " "
00 " "
45 P. M.

[May 15.]

Express.

6.00 P. M.
6.25 " "
8.43 " "
10.30 " "
12.01 A. M.
4.09 " "
5.06 " "
6.50 " "
7.45 " "
8.42 " "
9.52 " "
10.45 " "
11.13 " "
11.35 " "
12.33 P. M.
1.07 " "
2.30 P. M.

MONTREAL AND BOSTON.

Via Grand Trunk, Vermont Central, Northern (N. H.), Concord Manchester & Lawrence, and Boston & Lowell Railways.

MONTREAL TO BOSTON.				BOSTON TO MONTREAL.			
Miles	STATIONS.	Express.	Express.	Miles	STATIONS.	Express.	Express.
	MONTREAL... Dep	8.30 A. M.	3.30 P. M.		BOSTON..... Dep	7.00 A. M.	5.30 P. M.
27	St. Johns... } Arrive	9.50 "	4.50 "	25	Lowell.....	8.09 "	6.32 "
	} Leave	10.00 "	4.40 "	38	Nashua.....	8.45 "	7.05 "
67	St. Albans.....	12.00 Noon	7.25 "	55	Manchester.....	9.32 "	7.47 "
91	Essex Junction.....	1.05 P. M.	8.40 "	73	Concord.....	10.30 "	8.35 "
124	Montpelier Junction	2.42 "	10.12 "	142	White R'r Junc } Ar	1.08 P. M.	11.45 "
187	White R'r Junc } Ar	5.00 "	1.03 A. M.	} Le	1.15 "	11.45 "	
	} Le	5.15 "	1.20 "	265	Montpelier Junction	3.32 "	2.52 A. M.
256	Concord.....	7.45 "	5.30 "	238	Essex Junction....	5.00 "	4.38 "
274	Manchester.....	8.28 "	6.15 "	262	St. Albans.....	6.00 "	6.00 "
291	Nashua.....	9.00 "	7.00 "	302	St. Johns..... } Ar	8.00 "	8.00 "
304	Lowell.....	9.30 "	7.35 "	} Le	8.05 "	8.05 "	
329	BOSTON..... Arr	10.30 P. M.	8.30 A. M.	329	MONTREAL... Arr	9.20 P. M.	9.30 A. M.

MONTREAL AND NEW YORK.

Via Grand Trunk, Vermont Central, Rutland and Burlington, Troy and Boston and Western Vermont, and Hudson River Railways.

MONTREAL TO NEW YORK.				NEW YORK TO MONTREAL.			
Miles	STATIONS.	Express.	Express.	Miles	STATIONS.	Express.	Express.
	MONTREAL... De	8.30 A. M.	3.30 P. M.		Chamber St., N.Y D	7.00 A. M.	3.30 P. M.
21	St. Johns..... } Ar	9.50 "	4.50 "	3	Thirtieth Street....	7.30 "	4.00 "
	} De	10.00 "	4.40 "	17	Yonkers.....	8.03 "	4.34 "
67	St. Albans..... } Ar	11.45 "	6.40 "	43	Peckskill.....	8.53 "	5.27 "
	} De	12.00 Noon	7.25 "	75	Poughkeepsie....	10.06 "	6.50 "
92	Essex Junction.....	1.05 P. M.	8.40 "	116	Hudson.....	11.32 "	8.26 "
100	Burlington.... } Ar	1.28 "	9.05 "	144	East Albany.....	12.35 P. M.	9.30 "
	} De	1.28 "	9.45 "	150	Troy.....	12.55 "	9.50 "
167	Rutland..... } Ar	4.15 "	12.25 A. M.	} De	1.00 "	9.50 "	
	} De	4.15 "	1.20 "	234	Rutland..... } Ar	3.45 "	12.40 A. M.
251	Troy..... } Ar	7.30 "	4.40 "	} De	5.20 "	12.40 "	
	} De	10.00 "	4.50 "	301	Burlington..... } Ar	7.55 P. M.	3.15 "
157	East Albany.....	10.45 "	5.15 "	} De		4.00 "	
285	Hudson.....	12.07 A. M.	6.18 "	306	Essex Junction....		4.38 "
326	Poughkeepsie....	2.25 "	7.55 "	334	St. Albans..... } Ar		5.40 "
358	Peckskill.....	3.55 "	9.05 "	} De		6.00 "	
384	Yonkers.....	5.17 "	9.59 "	380	St. Johns..... } Ar		8.00 "
398	Thirtieth Street....	6.00 "	10.30 "	} De		8.05 "	
401	Chamber St., N.Y Ar	6.30 A. M.	11.00 A. M.	401	MONTREAL... Arr		9.30 A. M.

PORTLAND, BOSTON AND NEW YORK.

Via P. Saco and P., Eastern (Mass.), Boston and Worcester, Western (Mass.), New Haven Hartford and Springfield, and New York and New Haven Railways.

Portland to Boston and New York.				New York to Boston and Portland.			
Miles	STATIONS.	Pass'nger	Pass'nger	Miles	STATIONS.	Pass'nger	Pass'nger
	PORTLAND... Dep	8.40 A. M.	2.50 P. M.		N.YORK, 27th St. De	8.00 P. M.	
13	Saco.....	9.20 "	3.35 "	1	" 42d Street	8.08 "	
52	Portsmouth.....	11.15 "	5.30 "	57	Bridgeport.....	10.33 "	
108	Boston..... } Ar	1.45 P. M.	8.00 "	74	New Haven.....	11.15 "	
	} De	2.30 "	8.30 "	116	Hartford.....	12.40 A. M.	
152	Worcester.....	4.00 "	10.00 "	136	Springfield.... } Ar	1.44 "	
206	Springfield.... } Ar	5.45 "	12.00 "	} De	2.10 "		
	} De	6.00 "	12.00 "	190	Worcester.....	4.15 "	
232	Hartford.....	6.50 "	12.55 A. M.	234	Boston..... } Ar	6.00 "	
238	New Haven.....	8.00 "	2.15 "	} De	7.30 "	3.00 P. M.	
285	Bridgeport.....	8.35 "	2.50 "	290	Portsmouth.....	10.00 "	5.30 "
341	New York, 42d St.	10.39 "	4.54 "	329	Saco.....	11.56 "	7.26 "
342	" 27th St. Ar	10.45 P. M.	5.00 A. M.	342	PORTLAND... Arr	12.30 P. M.	8.00 P. M.

Miles	STATIONS.
14	T
18	R
22	K
30	A
34	N
38	H
41	B
49	G
52	L
63	Ba
73	An
80	Sur
85	Sta
94	CO
	PO
	S
	PORT
28	Danvi
34	Anbu
35	Lewis
42	Greene
45	Leeds
53	Water
92	Clinton
104	Pitsfie
119	Etna ..
138	BANG
	ROUSE'S
	STA
	ROUSE'S
4	Champlai
11	Mooors ..
14	Centorvil
27	Ellenbur
42	Chateaug
54	Malone ..
66	Brush's M
74	Lawrence
80	Brasher F
90	Potsdam ..
101	Madrid ..
118	OGDENSB

NORTHERN RAILWAY OF CANADA.

Trains are run by Toronto Time.

[July, 13]

TORONTO to COLLINGWOOD.

Miles	STATIONS.	Mail.	Exp's	Mix'd
	TORONTO.....Dep	A.M. 7.00	P.M. 4.05	
	14 Thornhill.....	7.43	4.48	
	18 Richmond Hill.....	7.55	5.01	
	22 King.....	8.10	5.16	
	30 Aurora.....	8.32	5.39	
	34 Newmarket.....	8.44	5.51	
	38 Holland Landing.....	8.57	6.04	
	41 Bradford.....	9.08	6.15	
	49 Gilford.....	9.31	6.38	
	52 Lefroy.....	9.40	6.47	
	63 Barrie.....	10.25	7.27	
	73 Angus.....	11.22	8.14	
	80 Sunnidale.....	11.43	8.35	
	85 Stayner.....	12.01	8.53	
	94 COLLINGWOOD. Arr	P.M. 12.25	P.M. 9.20	

COLLINGWOOD to TORONTO.

Miles	STATIONS.	Mail.	Exp's	Mix'd
	COLLINGWOOD..De	P.M. 3.30	A.M. 5.30	
	9 Stayner.....	3.58	5.55	
	14 Sunnidale.....	4.20	6.15	
	21 Angus.....	4.42	6.35	
	31 Barrie.....			
	42 Lefroy.....	5.20	7.10	
	45 Gilford.....	6.10	7.49	
	53 Bradford.....	6.38	7.57	
	56 Holland Landing.....	6.59	8.19	
	60 Newmarket.....	7.10	8.32	
	64 Aurora.....	7.23	8.44	
		7.35	8.59	
	72 King.....	7.53	9.24	
	76 Richmond Hill.....	8.04	9.37	
	80 Thornhill.....	8.15	9.49	
	94 TORONTO..... Arr	P.M. 8.55	A.M. 10.30	

MAINE CENTRAL RAILWAY.

Trains are run by Portland Time

PORTLAND to BANGOR.

Miles	STATIONS.	Express.	Local.
	PORTLAND.....De	1.25 P.M.	7.40 A.M.
	28 Danville Junction...	2.55	9.13
	34 Auburn.....	3.10	9.28
	35 Lowiston.....	3.20	9.38 A.M.
	42 Greene.....	3.38	
	45 Leeds.....	3.47	
	83 Waterville.....	Ar 5.22	De 6.20 A.M.
	92 Clinton.....	5.22	7.00
	104 Pittsfield.....	6.20	7.50
	119 Etna.....	7.02	9.20
	138 BANGOR..... Ar	7.48 P.M.	10.35 A.M.

BANGOR to PORTLAND.

Miles	STATIONS.	Express.	Local.
	BANGOR.....	7.30 A.M.	
	19 Etna.....	8.16	1.30 P.M.
	34 Pittsfield.....	9.01	2.31
	46 Clinton.....	9.32	3.47
	55 Waterville.....	Ar 9.58	De 4.43
		9.58	5.50 P.M.
	93 Leeds.....	11.37	
	96 Greene.....	11.46	
	103 Lewiston.....	12.05 P.M.	6.20 A.M.
	104 Auburn.....	12.14	6.30
	110 Danville Junction...	12.30	6.50
	138 PORTLAND..... Arr	2.05 P.M.	8.17 A.M.

OGDENSBURG RAILWAY.

Trains are run by Boston Time.

ROUSE'S POINT to OGDENSB'GH.

Miles	STATIONS	Express.	Mail.
	ROUSE'S POINT de	7.15 P.M.	7.15 A.M.
	4 Champlain.....	7.28	7.28
	11 Mooers.....	7.48	7.48
	14 Centerville.....	7.58	7.58
	27 Ellenburgh.....	8.40	8.40
	42 Chateaugay.....	9.23	9.23
	54 Malone.....	10.05	10.08
	66 Brush's Mills.....	10.37	10.39
	74 Lawrence.....	11.02	11.02
	80 Brasher Falls.....	11.18	11.18
	90 Potsdam.....	11.50	11.52
	101 Madrid.....	12.10 A.M.	12.15 P.M.
	118 OGDENSBURGH ar	12.50	1.00

OGDENSB'GH to ROUSE'S POINT.

Miles	STATIONS.	Express.	Mail.
	OGDENSBURGH de	5.30 A.M.	11.30 A.M.
	17 Madrid.....	6.10	12.15 P.M.
	28 Potsdam.....	6.30	12.37
	38 Brasher Falls.....	6.57	1.10
	44 Lawrence.....	7.12	1.25
	52 Brush's Mills.....	7.34	1.54
	64 Malone.....	8.15	2.44
	76 Chateaugay.....	8.43	3.22
	91 Ellenburgh.....	9.20	4.00
	104 Centerville.....	9.56	4.53
	107 Mooers.....	10.06	5.08
	114 Champlain.....	10.24	5.21
	118 ROUSE'S POINT ar	10.35 A.M.	5.33 P.M.

GREAT WESTERN RAILWAY.

Trains are run by Hamilton Time.

[August.

SUSPENSION BRIDGE TO WINDSOR.

Miles	STATIONS.	Mixed.	Morn'g Expr'ss	Day Expr'ss	Accom.	Night Mail.
	SUSPENSION BRIDGE.....Dep		6.30 AM	2.00 PM	3.35 PM	12.15 AM
9 1/2	Thorold.....		7.00 "	2.18 "	3.58 "	
11 1/2	St. Catherine.....		7.23 "	2.24 "	4.05 "	12.40 "
17	Jordan.....		7.28 "		4.23 "	
22 1/2	Beamsville.....		7.42 "		4.35 "	
26 1/2	Grimsby.....		7.55 "		4.45 "	
31 1/2	Ontario.....		8.05 "		4.55 "	
43 1/2	HAMILTON } Arrive		8.30 "	3.30 "	5.25 "	1.55 "
	} Depart		8.45 "	3.40 "	5.25 "	2.05 "
49 1/2	Dundas.....		9.23 "	3.58 "	5.58 "	
54 1/2	Copetown.....		9.40 "		6.15 "	
59	Lynden.....		9.55 "		6.28 "	
62 1/2	Harrisburg.....		10.05 "		6.38 "	
72	PARIS.....		10.35 "	4.52 "	7.05 "	3.22 "
79	Princeton.....		10.53 "		7.25 "	
81 1/2	Arnolds.....		11.00 "		7.33 "	
86 1/2	Eastwood.....		11.09 "		7.45 "	
90 1/2	Woodstock.....		11.20 "	5.37 "	7.57 "	4.06 "
95 1/2	Beachville.....		11.30 "		8.10 "	
100	Ingersoll.....		11.40 "	5.58 "	8.24 "	4.30 "
109 1/2	Dorchester.....		12.02 PM		8.50 "	
119 1/2	LONDON } Arrive	7.10 AM	12.20 "	6.45 "	9.15 "	5.15 "
	} Depart		12.40 "	7.00 "		5.25 "
129 1/2	Komoka.....		7.47 "	1.05 "		
134	Mt. Brydges.....		8.05 "	1.15 "	7.35 "	
140	Longwood.....		8.27 "	1.30 "	7.50 "	
145	Appin.....		8.45 "			
149 1/2	Glence.....		9.00 "	1.54 "	8.08 "	
155 1/2	Newbury.....		9.25 "	2.07 "	8.25 "	6.50 "
161	Bothwell.....		9.45 "	2.20 "	8.37 "	
168 1/2	Thamesville.....		10.25 "	2.35 "		
174 1/2	Lewisville.....		10.45 "			
183 1/2	CHATHAM.....		11.17 "	3.15 "	9.30 "	7.55 "
198	Baptiste Creek.....		12.08 PM	3.50 "		8.30 "
203	Stoney.....		12.37 "	4.00 "		
211 1/2	Belle River.....		1.10 "	4.22 "		9.07 "
229	WINDSOR..... Arrive	2.15 PM	5.00 PM	11.15 PM		9.45 AM

TORONTO BRANCH.—TORONTO TO HAMILTON.

Miles	STATIONS.	Accom.	Expr'ss	Accom.	Accom.
	TORONTO.....Depart	7.00 AM	1.00 PM	3.50 PM	7.45 PM
7	Mimico.....	7.20 "		4.10 "	8.10 "
13 1/2	Port Credit.....	7.38 "	1.35 "	4.25 "	8.35 "
21 1/2	Oakville.....	8.00 "	1.55 "	4.46 "	9.05 "
25 1/2	Bronte.....	8.11 "	2.05 "	4.56 "	9.17 "
32	Wellington Square.....	8.30 "	2.22 "	5.10 "	9.37 "
35	Waterdown.....	8.38 "		5.17 "	9.47 "
37 1/2	Burlington Junction.....				
39	HAMILTON.....Arrive	8.50 AM	2.40 PM	5.30 PM	10.00 PM

SARNIA BRANCH.—Trains leave London for Sarnia at 7.00 A.M. and 4.00 P.M. Returning leave Sarnia at 8.05 A.M. and 2.50 P.M.

WELLAND RAILWAY

Trains are run by Hamilton Time.

[Aug. 18.

Port Dalhousie to Buffalo.			Buffalo to Port Dalhousie.				
Miles	STATIONS.	Passeng'r	Passeng'r	Miles	STATIONS.	Passeng'r	Passeng'r
	Port Dalhousie...Dep	8.00 A.M.	3.00 P.M.		Buffalo.....Dep	7.00 A.M.	2.15 P.M.
	St. Catharines.....	8.20 "	3.20 "		Port Colborne.....	11.15 "	3.25 "
	Thorold.....	8.45 "	3.45 "		Welland.....	11.25 "	3.55 "
	Allanburgh.....	8.55 "	3.55 "		Port Robinson.....	11.47 "	6.07 "
	Port Robinson.....	9.03 "	4.03 "		Allanburgh.....	11.55 "	6.15 "
	Welland.....	9.15 "	4.15 "		Thorold.....	12.05 P.M.	2.25 "
	Port Colborne.....	9.45 "	4.45 "		St. Catharines.....	12.25 "	6.45 "
	Buffalo.....Arr	12.15 P.M.	6.45 P.M.		Port Dalhousie...Arr	12.45 P.M.	7.10 P.M.

A special train running in connection with the steamer "Silver Spray" leaves Port Dalhousie at 6.30 P.M., arrives at Buffalo at 10.00 P.M. Returning, leaves Buffalo at 2.15 P.M., arrives at Port Dalhousie at 7.10 P.M.

Miles	STATIONS.
17	
26	
31	
45 1/2	
54 1/2	
60 1/2	
68	
73 1/2	
79 1/2	
84	
89	
95	
99 1/2	
109 1/2	
119 1/2	
129 1/2	
133 1/2	
138 1/2	
142 1/2	
147 1/2	
150 1/2	
157 1/2	
166 1/2	
170 1/2	
174 1/2	
179 1/2	
185 1/2	
197 1/2	
202 1/2	
206 1/2	
212 1/2	
217 1/2	
219 1/2	
229	SUS.

Miles	STATIONS.
13	HAMILTON
4	Burlington
7	Waterloo
13 1/2	Wellington
17 1/2	Bronte
25 1/2	Oakville
32	Port Credit
35	Mimico
39	TORONTO

GUELPH BRANCH
Returning, leave

PORTLAND

Miles	STATIONS.
	SUMNER
	Buckfield
	Hebron
	Minot
	MECHANIC

GREAT WESTERN RAILWAY.

Trains are run by Hamilton Time.

WINDSOR TO SUSPENSION BRIDGE.

Miles	STATIONS.	Accom.	Morn'g Expr'ss	Day Expr'ss	Mixed.	Night Mail.
	WINDSOR Depart					
17 1/2	Belle River.....		7.30 AM		12.10 PM	
26	Stoney Point.....		8.07 "	11.00 AM	1.10 "	6.45 PM
31	Baptiste Creek.....					
45 1/2	CHATHAM					
54 1/2	Lewisville.....		8.35 "	12.19 PM	2.04 "	
60 1/2	Thamesville.....		9.07 "		3.05 "	8.25 "
68	Bothwell.....					
73 1/2	Newbury.....		9.41 "	1.33 "	3.45 "	
79	Glencoe.....		9.58 "	1.52 "	4.05 "	
84	Appin.....		10.10 "	2.07 "	4.20 "	
89	Longwood.....		10.24 "	2.21 "	5.10 "	
95	Mount Brydges.....				5.25 "	
99 1/2	Komoka.....		10.45 "	2.55 "	5.42 "	
109 1/2	LONDON }..... Arrive		11.00 "	3.10 "	6.00 "	
119 1/2	Dorchester }..... Depart	6.20 AM	11.35 "	3.35 "	6.15 "	
129	Ingersoll.....	6.45 "		3.50 "	6.50 "	10.50 "
133	Beachville.....	7.09 "	12.36 PM	4.15 "		
138	Woodstock.....	7.20 "		4.40 "		
142 1/2	Eastwood.....	7.32 "	12.55 "	4.50 "		11.42 "
147 1/2	Arnolds.....	7.45 "		5.04 "		
150	Princeton.....	7.57 "		5.15 "		
157	PARIS	8.03 "		5.29 "		
166 1/2	HARRISBURG	8.23 "	1.42 "	5.35 "		
170	Lynden.....	8.48 "		5.55 "		
174 1/2	Copetown.....	8.55 "		6.20 "	12.46 AM	
179 1/2	Dundas.....	9.05 "		6.28 "		
185 1/2	HAMILTON }..... Arrive	9.20 "	2.34 "	6.40 "		
197 1/2	Ontario..... Depart	9.40 "	2.50 "	6.55 "		
202	Grimsby.....	9.50 "	3.00 "	7.15 "		1.55 "
206 1/2	Beamsville.....	10.29 "		7.25 "		2.05 "
212	Jordon.....	10.53 "	3.37 "	7.55 "		
217 1/2	St. Catharines.....	10.49 "		8.08 "		
219 1/2	Thorold.....	11.04 "		8.18 "		
229	SUSPENSION BRIDGE Arrive	11.20 "	4.10 "	8.33 "		
		11.27 "	4.15 "	8.50 "		3.17 "
		11.55 AM	4.35 PM	9.20 PM		3.45 AM

TORONTO BRANCH.—HAMILTON TO TORONTO.

Miles	STATIONS.	Accom.	Accom.	Expr'ss	Accom.
	HAMILTON Depart				
1 1/2	Burlington Junction.....	7.20 AM	9.25 AM	3.35 PM	7.25 PM
4	Waterdown.....				
7	Wellington Square.....	7.33 "	9.42 "		
13 1/2	Bronte.....	7.43 "	9.51 "	3.51 "	7.37 "
17 1/2	Oakville.....	8.07 "	10.10 "	4.05 "	7.45 "
25 1/2	Port Credit.....	8.20 "	10.20 "	4.14 "	8.05 "
32	Mimico.....	8.43 "	10.40 "	4.30 "	8.17 "
39	TORONTO Arrive	9.03 "	10.57 "		8.40 "
		9.25 AM	11.15 AM	5.07 PM	9.20 PM

GUELPH BRANCH.—Trains leave Harrisburg for Guelph at 10.10 A. M. and 6.50 P. M.; Returning, leave Guelph at 7.05 A. M. and 4.20 P. M.

PORTLAND and OXFORD CENTRAL RAILWAY.

Trains are run by Portland Time.

Sumner to Mechanic Falls.

Miles	STATIONS.	Mail.
	SUMNER Depart	9.15 A.M.
	Buckfield.....	9.45 "
	Hebron.....	10.03 "
	Minot.....	10.30 "
	MECHANIC FALLS Arrive	11.00 A.M.

Mechanic Falls to Sumner.

Miles	STATIONS	Mail.
	MECHANIC FALLS Depart	3.40 P.M.
	Minot.....	4.00 "
	Hebron.....	4.10 "
	Buckfield.....	4.30 "
	SUMNER Arrive	4.50 P.M.

PORT HOPE, LINDSAY and BEAVERTON R'Y.

Trains are run by Port Hope Time, which is 20 minutes slower than Montreal Time.

PORT HOPE to LINDSAY.

Miles	STATIONS.	Mail.
	PORT HOPE	Depart 3.00 P.M.
	18 Millbrook	4.40
	24 Manvers	5.10
	33 Onemee	5.55
	43 LINDSAY	Arrive 6.40 P.M.

LINDSAY to PORT HOPE.

Miles	STATIONS.	Mail.
	LINDSAY	Depart 9.25 A.M.
	10 Onemee	10.10
	19 Manvers	10.50
	25 Millbrook	11.50
	43 PORT HOPE	Arrive 12.50 P.M.

PORT HOPE to PETERBORO.

Miles	STATIONS.	Mail.
	PORT HOPE	Depart 9.55 A.M.
	8 Perrytown	10.25
	15 Summit	10.55
	19 Millbrook	11.25
	23 Fraserville	11.50
	31 PETERBORO	Arrive 12.15 P.M.

PETERBORO to PORT HOPE.

Miles	STATIONS.	Mail.
	PETERBORO	Depart 3.30 P.M.
	9 Fraserville	3.55
	13 Millbrook	4.30
	16 Summit	4.50
	23 Perrytown	5.20
	31 PORT HOPE	Arrive 5.55 P.M.

DETROIT and MILWAUKEE RAILWAY.

Trains are run by Detroit Time.

DETROIT TO MILWAUKEE.

Miles	STATIONS.	Mail.	Mixed.
	DETROIT	Dep 10.30 A.M.	8.30 P.M.
	26 Pontiac	12.00 noon	11.00 "
	78 Owosso	Dep 2.50 P.M.	4.00 A.M.
		3.10 "	4.10 "
	98 St. John's	Dep 4.10 "	5.45 "
		4.10 "	6.00 "
	157 Grand Rapids	Dep 6.48 "	11.30 "
		6.40 "	11.40 "
	189 Grand Haven	Dep 8.15 P.M.	2.00 P.M.
	MILWAUKEE	Arr 4.00 A.M.	4.00 A.M.

MILWAUKEE TO DETROIT.

Miles	STATIONS.	Mail.	Mixed.
	MILWAUKEE	Dep 8.00 P.M.	
	Grand Haven	Dep 7.45 A.M.	4.00 P.M.
		9.12 "	6.30 "
	31 Grand Rapids	Dep 9.15 "	7.00 "
		9.15 "	7.00 "
	91 St. John's	Dep 11.50 "	12.15 A.M.
		11.50 "	12.30 "
	110 Owosso	Dep 12.50 P.M.	2.20 "
		1.10 "	2.30 "
	163 Pontiac	4.10 "	7.30 "
	189 DETROIT	Arr 5.35 P.M.	10.00 A.M.

LONDON and PORT STANLEY RAILWAY.

Trains are run by London Time.

London to Port Stanley.

Miles	STATIONS.	Passeng'r	Passeng'r
	LONDON	Dep 7.00 A.M.	3.10 P.M.
	5 Pond Mills	7.08 "	3.18 "
	5 Westminster North	7.15 "	3.25 "
	8 Westminster South	7.25 "	3.35 "
	11 Yarmouth	7.35 "	3.45 "
	15 St. Thomas	Dep 7.45 "	3.55 "
		7.50 "	4.00 "
	20 White's	8.00 "	4.10 "
	24 P'T STANLEY	Arr 8.10 A.M.	4.20 P.M.

Port Stanley to London.

Miles	STATIONS.	Passeng'r	Passeng'r
	P'T STANLEY	Dep 8.50 A.M.	5.20 P.M.
	4 White's	9.00 "	5.30 "
	9 St. Thomas	Dep 9.10 "	5.40 "
		9.15 "	5.45 "
	13 Yarmouth	9.25 "	5.55 "
	16 Westminster South	9.35 "	6.05 "
	19 Westminster North	9.45 "	6.15 "
	21 Pond Mills	9.52 "	6.22 "
	24 LONDON	Arr 10.00 A.M.	6.30 P.M.

Miles

AR

Miles

San

0 Arn

8 Pak

13 *Sn

17 Alm

23 Carl

28 *Bec

32 Fran

35 *Fer

41 Smith

44 *St

48 Irish

53 *Wolf

55 *Bell's

57 *Jelly

59 Bellam

62 *Clark

63 *Fairh

68 G. T. J.

69 Brockvi

0 Smith's F

6 *Pike Fa

12 Perth.....

N

Buffalo

Miles

STATION

BUFFALO

Ferry

4 Black Rock ..

11 Tonawanda ..

17 La Salle

22 NIAGARA F

STANSTEAD, SHEFFORD & CHAMBLY RAILWAY.

Trains are run by St. Albans Time, which is 10 minutes faster than Montreal Time.

Waterloo to St. Johns.

Miles	STATIONS.	Mail.	
	WATERLOO...Dep	6.00 A.M.	12.30 P.M.
6	West Shefford	6.15 "	12.47 "
14	Holland's	6.20 "	12.49 "
23	Granby	6.40 "	3.05 "
29	St. George	7.05 "	3.20 "
33	West Farnham	7.20 "	3.40 "
36	St. Brigide	7.30 "	3.50 "
36	Soixante	7.40 "	3.58 "
43	ST. JOHNS...Arr	7.55 A.M.	4.20 P.M.

St. Johns to Waterloo.

Miles	STATIONS.	Mail.	
	ST. JOHNS...Dep	9.55 A.M.	4.50 P.M.
7	Soixante	10.15 "	5.10 "
10	St. Brigide	10.20 "	5.15 "
14	Farnham	10.30 "	5.25 "
21	St. George	10.45 "	5.45 "
29	Granby	11.00 "	6.05 "
36	Holland's	11.20 "	6.20 "
37	West Shefford	11.25 "	6.25 "
43	WATERLOO...Arr	11.40 A.M.	6.40 P.M.

BROCKVILLE AND OTTAWA RAILWAY.

Trains are run by Montreal Time

(September 11th)

ARNPRIOR TO BROCKVILLE.

Miles.	STATIONS.	No. 2.	No. 4.
	Sand Point...Depart		8.40 A.M.
0	Arnprior		9.10
8	Pakenham		9.45
13 1/2	*Snedden's		10.12
17	Almonte		10.30
23	Carleton Place		10.50
28	*Beckwith		11.07
32	Franktown		11.23
35 3/4	*Ferguson's		11.35
41	Smith's Falls	8.30 P.M.	11.55
44	*Story's	8.40	12.05 P.M.
48	Irish Creek	8.54	12.17
53	*Wolford	9.14	12.34
55 3/4	*Bell's	9.24	12.41
57	*Jelly's	9.30	12.46
59	Bellamy's	9.38	12.52
62	*Clark's	9.50	1.02
63 1/2	*Fairfield	9.58	1.08
68 1/2	G. T. Junction	10.21	1.25
69	Brockville...arrive	10.28 P.M.	1.30 P.M.

BROCKVILLE TO ARNPRIOR.

Miles.	STATIONS.	No. 1.	No. 3.
	Brockville...Depart	8.00 A.M.	4.50 P.M.
0 1/2	G. T. Junction	8.07	4.57
5 1/2	*Fairfield	8.24	5.20
7	*Clark's	8.30	5.28
10	Bellamy's	8.40	5.42
12	*Jelly's	8.47	5.50
13 1/2	*Bell's	8.52	5.56
16	*Wolford	9.00	6.06
21	Irish Creek	9.16	6.26
25	*Story's	9.30	6.40
28	Smith's Falls	9.40 A.M.	6.50 P.M.
33	*Ferguson's		7.07
37	Franktown		7.20
41	*Beckwith		7.34
46	Carleton Place		7.50
52	Almonte		8.10
55	*Snedden's		8.28
61	Pakenham		8.55
69	Arnprior		9.30
	Sand Point...Arrive		10.00 P.M.

PERTH BRANCH.

0	Smith's Falls...Dep	A.M.	A.M.	P.M.	0	Perth	A.M.	P.M.	P.M.
6	*Pike Falls	9.40	11.55	6.50	6	*Pike Falls...Dep	11.05	6.00	7.50
12	Perth...Arr	10.20	12.15	7.10	12	Smith's Falls...Arr	11.25	6.20	8.10
		A.M.	P.M.	P.M.			A.M.	P.M.	P.M.
								6.40	8.30

*Flag Stations.

NEW YORK CENTRAL RAILWAY.

Trains are run by Albany Time.

Buffalo to Niagara Falls.

Miles	STATIONS.	Exps.	Exps.	Exps.
	BUFFALO	A.M.	P.M.	P.M.
	Ferry	9.00	12.20	6.35
4	Black Rock	9.08	12.30	6.44
11	Tonawanda	9.13	12.35	6.48
17	La Salle	9.30	12.50	7.05
22	NIAGARA FALLS a	9.46	1.05	7.20
		10.00	1.20	7.35
		A.M.	P.M.	P.M.

Niagara Falls to Buffalo.

Miles	STATIONS.	Exps.	Exps.	Exps.
	NIAGARA FALLS d	A.M.	P.M.	P.M.
5	La Salle	9.00	12.50	6.00
11	Tonawanda	9.12	1.05	6.14
18	Black Rock	9.20	1.10	6.30
	Ferry	9.47	1.35	6.48
22	BUFFALO	9.52	1.40	6.52
		10.00	1.50	7.00
		A.M.	P.M.	P.M.

MONTREAL and NEW YORK.

Via Grand Trunk, Vermont Central, Connecticut River, New Haven H. and Springfield, and New York and New Haven Railways.

MONTREAL TO NEW YORK.

NEW YORK TO MONTREAL.

Miles	STATIONS.	Express.	Miles	STATIONS.	Express.
	MONTREAL.....	Depart		NEW YORK.....	Depart
67	St. Albans.....	3.30 P.M.	57	Bridgeport.....	12.15 P.M.
91	Essex Junction.....	4.25	74	New Haven.....	2.00
124	Montpelier Junction.....	8.40	110	Hartford.....	3.15
187	White River Junction.....	10.12	136	Springfield.....	4.47
227	Bellows Falls.....	1.15 A.M.	158	Northampton.....	6.30
251	Brattleboro.....	2.57	172	Greenfield.....	7.20
261	South Vernon.....	3.55	188	South Vernon.....	8.74
273	Greenfield.....	4.25	196	Brattleboro.....	8.22
294	Northampton.....	4.56	230	Bellows Falls.....	8.57
311	Springfield.....	5.41	260	White River Junction.....	10.00
337	Hartford.....	7.00	322	Montpelier Junction.....	11.55
378	New Haven.....	8.10	340	Essex Junction.....	2.52 A.M.
390	Bridgeport.....	9.45	380	St. Albans.....	4.38
447	NEW YORK.....	Arrive	447	MONTREAL.....	Arrive
		12.45 P.M.			9.30 A.M.

MONTREAL and NEW YORK.

Via Grand Trunk Railway, Lake Champlain Steamers, Rensselaer and Saratoga Railway, and from Troy or Albany by either Hudson River Railway or Hudson River Boats.

MONTREAL to NEW YORK.

NEW YORK to MONTREAL.

Miles	STATIONS.	Day Line	Ni't Line	Miles	STATIONS.	Day Line	Ni't Line
	MONTREAL...Dep	5.45 A.M.	3.30 P.M.		NEW YORK (Troy		
49	Rouse's Pt. (by St'r'd)		5.45 "		" or People's Line		
	Rouse's Pt. (by Rail to				Steamers)...Dep	6.00 P.M.	
	Burlington, thence				" (Hudson R. R.) de	10.30 "	
	by Steamer)...dep	7.45 "			" (Day Boat)...dep		7.00 A. M.
74	Plattsburg.....		7.30 "		" (Hudson R. R.) de		7.30 "
89	Port Kent.....		8.30 "	144	Albany.....	7.30 A. M.	5.00 P. M.
99	Burlington.....	10.30	9.45 "	159	Troy (Union Depot)...	7.50 "	5.20 "
135	Port Henry.....	12.30 P. M.	12.30 A. M.	156	Albany Junction.....	8.15	5.43 "
144	Crown Point.....	1.10 "	1.20 "	182	Saratoga.....	9.25	6.55 "
155	Ticonderoga*.....	2.00 "	2.00 "	198	Moreau.....	10.01	7.36 "
179	Whitehall... } Arr	4.15 "	6.00 "	199	Fort Edward.....	10.06	7.41 "
187	Fort Ann..... } Dep	4.50 "	6.00 "	211	Fort Ann.....	10.32	8.10 "
195	Fort Edward.....	5.38 "	6.18 "	219	Whitehall... } Arr	11.00	8.49 "
206	Moreau.....	6.08 "	6.49 "		Whitehall... } Dep	11.00	8.45 "
216	Saratoga.....	6.13 "	6.54 "	243	Ticonderoga.....	12.45 P. M.	
242	Albany Junction....	7.00 "	7.40 "	254	Crown Point.....	1.20 "	
248	Troy (Union Dp't) Arr	8.15 "	8.45 "	263	Port Henry.....	2.00 "	
254	Albany..... Arr	8.40 "	9.10 "	299	Burlington.....	4.45 "	3.00 A. M.
308	NEW YORK, (Night	8.50 "	9.20 "	349	Port Kent.....	5.30 "	
	Boat)..... Arr	6.00 A. M.		324	Plattsburg.....	6.30 "	5.30 "
	" (Hudson R.R.) Arr	6.00 A. M.		349	Rouse's Point } Arr	8.45 "	7.15 "
	" (Day Boat)... Arr		6.00 P. M.		Rouse's Point } Dep	9.00 "	
	" (Hudson R.R.) Arr		4.30 "	398	MONTREAL... Arr	10.55 P. M.	
					(by rail from Bur-		
					lington or Plattsburg)		9.30 A. M.

* Connects with Boat on Lake George by Stages, 3 miles to foot of Lake.
 † Connections with Stages for Glen's Falls and Lake George.

STONINGTON LINE FOR NEW YORK.

Cars leave the depot of the Boston and Providence Railroad, Pleasant Street, daily, Sundays excepted, at 5.30 o'clock P. M., arriving at Groton, Ct., at 9.30 o'clock P. M., for the Steamer COMMONWEALTH, CAPT. J. W. WILLIAMS, on Monday, Wednesday and Friday, and the PLYMOUTH ROCK, CAPT. J. C. GEEB, on Tuesday, Thursday and Saturday.

J. W. RICHARDSON, Agent, 76 Washington Street, Boston.

OTT

By S.

ALB

The Albany by the Mer...
 nada as the...
 easy of acc...
 is situated a...
 contiguous t...
 the City, ar...
 Post Office...
 under the ch...
 Decker, for...
 time large ad...
 have been m...
 Hotel save on...
 encouraged b...
 their patrona...
 Wing, some 1...
 Dining Room...
 The Beds are...
 trasses, and t...
 throughout.

The price per of an ordinary accommodation per night.

Omnibuses and attendance at the and Steamboat...
 Meal Hours:—
 Seven to Nine; I...
 two; Tea from Si...
 Sundays:—Bre...
 Half-past One; T

PORTLAND and KENNEBEC RAILWAY.

Trains are run by Portland Time.

SKOWHEGAN to PORTLAND.

PORTLAND to SKOWHEGAN.

Miles	STATIONS.	Passeng'r	Passeng'r	Miles	STATIONS.	Passeng'r	Passeng'r
	SKOWHEGAN . . . Dep	9.00 A.M.			PORTLAND . . . Dop	1.00 P.M.	
	8 Pishon Ferry . . .	9.24 " "	Monday mornings only		5 Westbrook . . .	1.24 " "	8.15 P.M.
	13 Somerset Mills . . .	9.30 " "			12 Cumberland . . .	1.45 " "	8.35 " "
	17 Kendall's Mills . . .	9.48 " "			16 Yarmouth . . .	1.57 " "	8.56 " "
	19 Waterville . . .	9.58 " "			22 Freeport . . .	2.15 " "	9.08 " "
	29 Winslow . . .	10.01 " "			30 Brunswick . . .	2.38 " "	9.26 " "
	25 Vassalboro' . . .	10.20 " "			38 Bowdoinham . . .	3.02 " "	9.50 " "
	37 Augusta . . . } . . . Arr	10.55 " "			46 Richmond . . .	3.25 " "	10.14 " "
	39 Hallowell . . . } . . . Dep	11.00 " "		5.00 A.M.	48 Gardiner . . .	3.55 " "	10.38 " "
	44 Gardiner . . .	11.06 " "		5.06 " "	50 Hallowell . . .	4.10 " "	11.08 " "
	54 Richmond . . .	11.22 " "		5.23 " "	61 Hallowell . . .	4.16 " "	11.23 " "
	62 Bowdoinham . . .	11.54 " "	5.56 " "	63 Augusta . . . } . . . Arr	4.26 " "	11.29 P.M.	
	70 Brunswick . . .	12.19 P.M.	6.21 " "	75 Vassalboro' . . . } . . . Dep	4.50 " "		
	78 Freeport . . .	12.49 " "	6.43 " "	80 Winslow . . .	4.56 " "		
	84 Yarmouth . . .	1.13 " "	7.13 " "	81 Waterville . . .	5.05 " "		
	88 Cumberland . . .	1.31 " "	7.31 " "	83 Kendall's Mills . . .	5.10 " "		
	95 Westbrook . . .	1.45 " "	7.44 " "	87 Somerset Mills . . .	5.29 " "		
	100 PORTLAND . . . Arr	2.20 P.M.	8.05 " "	92 Pishon Ferry . . .	5.45 " "		
			8.24 A.M.	100 SKOWHEGAN . . . Ar	6.10 P.M.		

HOTELS.

OTTAWA HOTEL,
Great St. James Street,
By S. BROWNING. Montreal.

ALBION HOTEL,
311, 313, 315 St. Paul Street,
Montreal.

The Albion Hotel has long been regarded by the Merchants of Upper and Lower Canada as the most convenient, comfortable and easy of access of any Hotel in Montreal. It is situated at the West end of St. Paul Street, contiguous to the largest wholesale Houses in the City, and near the Telegraph Offices, Post Office, Banks, &c., &c. It has been under the charge of its present Manager, Mr. Decker, for over seven years. During that time large additions and extensive alterations have been made, so that it is now the largest Hotel save one in Montreal. The proprietors, encouraged by the very rapid increase in their patronage, have built a second new Wing, some 160 feet in length, with a new Dining Room capable of seating 300 Guests. The Beds are all furnished with Spring Mattresses, and the House is nowly furnished throughout.

The price per day is \$1.50, being that only of an ordinary second class House, whilst the accommodations are first class in every respect.

Omnibuses and Porters of the House are in attendance at the various Railroad Depots and Steamboat Landings.

Meal Hours:—Breakfast from Half-past Seven to Nine; Dinner from One to Half-past two; Tea from Six to Eight o'clock.

Sundays:—Breakfast at Eight; Dinner at Half-past One; Tea at Six.

DECKER & CO.

CONFECTIONER.

KERR & FINDLAY,
[successors to Hally & McWilliam]
Wholesale Confectioners,
No. 300 St. Paul Street, Montreal.

SADDLERY.

JOHN C. McLAREN,
SADDLERY EMPORIUM,
149 Great St. James Street, Montreal.
Importer of London made Saddlery, Bridles, Bits, Whips, Spurs, &c.

All goods in the line kept and supplied monthly per Canadian Royal Mail Steamships.

Orders executed with promptness.

TOBACCO, &c.

STARKE, SMITH & CO.,
TOBACCO MANUFACTURERS

KING STREET,

MONTREAL.

6.65

Springfield,

REAL.

Express,
12.15 P.M.
2.33
3.15
4.47
6.30
7.29
8.64
8.32
8.57
10.00
11.55
2.52 A.M.
4.38
6.00
9.30 A.M.

Railway,
Boats.

REAL.

N't Line

7.00 A.M.
7.30
5.00 P.M.
5.20
5.43
6.55
7.36
7.41
8.10
8.43
8.45

3.00 A.M.

3.30

7.15

9.30 A.M.

t, daily,

for the

Friday,

7.

Boston.

S T . L A W R E N C E H A L L ,

Great St. James Street,

MONTREAL.

H. HOGAN,..... PROPRIETOR.

T HIS First-class Hotel, which has been under the management of its proprietor since its opening in eighteen hundred and fifty-one, and is the largest in Montreal, is situated on Great St. James Street, opposite the Post Office, and adjacent to the French Cathedral, or Church Ville Marie, the Grey and Black Nunneries, Court House, Champ de Mars, Banks, Mechanics' Institute, Nelson's Monument, Canadian Institute, City Hall, and Fashionable Stores, thus rendering it desirable for both

BUSINESS AND PLEASURE TRAVELLERS.

The **THEATRE ROYAL** is immediately in the rear of the Hotel, and one of the best Boxes is

Regularly reserved for the Guests of St. Lawrence Hall.

5.65

R U S S E L L ' S H O T E L ,

PALACE STREET,

Q U E B E C , C . E .

T HE above Hotel, known all over the Province, is still open for the accommodation of Guests, and every attention continues to be paid to those who favor it with their patronage.

THE ST. LOUIS HOTEL, ST. LOUIS STREET,

Is also open. Extensive alterations have been made, and it is now equal to any Hotel in the Province. There is house commodation for a much larger number of guests than formerly.

Carriages in summer, and Sleighs in Winter

Always at hand to convey Visitors to the various places of interest, such as the

Montmorency Falls,

Plains of Abraham,

Chaudiere Falls,

The Indian Village of Lorette, &c., &c.

TERMS MODERATE.

5.65

LOV
S
R. G
Manufac
No. 3
(
Dea
Account
Bill Head
Files, Copy
Card Case
Cups, Env
Gun Ticks
Letter We
Knives, Pe
Portmonnai
Writing Des
T. RID
British
22 Great S
5.65
E. PICK
Newspaper a
Next d
St.
5.65

BOOKSELLERS, &c.

ROBERT MILLER,

(Late R. & A. Miller.)

PAPER MAKER,

WHOLESALE STATIONER,

BOOKBINDER,

Account Book Manufacturer,

and Importer of

Window Shades and Wall Papers.

—
Agent for

LOVELL'S SERIES OF SCHOOL BOOKS.

—
Works :

Sherbrooke Paper Mills, Sherbrooke ;

Office and Saleroom :

60 St. Francois Xavier Street,
Montreal.

R. GRAHAM & CO.,

Importers of
English, French and German

STATIONERY,

Manufacturers of **BLANK WORK** of every
description,

No. 30 St. Francois Xavier Street,
(Opposite St. Sacrament St.)

Montreal.

Dealers in the following articles :
Account Books, Guard Books, Letter Books,
Bill Head Cases, Cash Boxes, Cowel Paper
Files, Copying Presses, Cards, Colored Paper
Card Cases, Damping Brushes, Damping
Cups, Envelopes, Envelope Cases, Folders,
Gum Tickets, Ink, Ink Stands, Letter Clips,
Letter Weights, Letter Seals, Paper, Pen
Knives, Pens, Penholders, Pocket Books,
Portmonnaies, Portfolios, Rulers, Slates,
Writing Desks, &c., &c.

T. RIDDELL,

Importer of

British and Foreign Stationery,

Wholesale and Retail,

22 Great St. James Street,
5,65

Montreal.

E. PICKUP'S

Newspaper and Postage Stamp Office,
Next door to the Post Office,

St. Francois Xavier Street,

5,65

Montreal.

6,65

PRINTERS & PUBLISHERS.

BOOK & JOB PRINTING

AND

BLANK ACCOUNT BOOKS.

Having made extensive additions to his
Premises in St. Nicholas Street, the under-
signed is enabled to undertake the execution
at the shortest notice and with utmost des-
patch, of

Every description of Printing,

From the largest Volumes to the briefest
Pamphlets, and from Mammoth Posters to
the smallest Jobs.

Particular attention given to the manufac-
ture of

All kinds of Blank Books,

for Banks, Merchants, Assurance Companies,
&c.

JOHN LOVELL,

Printer and Blank Book Manufacturer.
18, 20 and 22 St. Nicholas Street,
Montreal, November, 1864.

J. C. BECKET'S

Steam

BOOK AND JOB PRINTING

Establishment,

No. 84 GREAT ST. JAMES STREET,
Montreal.

TYPE FOUNDRY.

C. T. PALSGRAVE,

Manufacturer and Importer of

SCOTCH FACES BOOK & NEWS TYPE,

FANCY TYPE, BORDERS,

PRESSES, WOOD TYPE, PRINTING INK,

Printers' Requisites generally.

Lemoine Street, Montreal. ■

COMMISSION MERCHANTS.

FOLINGSBY & WILLIAMSON,

Commission Merchants

and Shipping Agents,

13 and 15 William Street,

Montreal.

HARDWARE.**ALFRED BROWN,**

Importer of all kinds of

METALS

and

HEAVY HARDWARE,

20 & 22

St. SACRAMENT STREET,

MONTREAL.

MULHOLLAND & BAKER

Importers of all kinds of

IRON AND STEEL,

Heavy Hardware and Shelf Goods,

Montreal.

243 St. Paul Street.

Yard Entrance, St. Francois Xavier St.

FERRIER & CO.,**HARDWARE MERCHANTS,**

Wholesale Ware Rooms,

Entrance

No. 15, St. Francois Xavier Street,

5,65

Montreal.

FROTHINGHAM & WORKMAN,

(Established 1800,

Importers, Manufacturers and Wholesale

Dealers in

IRON, STEEL, TIN, ANCHORS, CHAINS,

AND

GENERAL HARDWARE.

Warehouse and Offices:

St. Paul Street, Montreal.

Manufactories: Cote St. Paul, near Montreal.
5,65**WATCHES, JEWELLERY, &c.**

Established 1818.

SAVAGE & LYMAN

Have constantly on hand a large and well-selected Stock of

GOLD AND SILVER WATCHES,

Jewellery of all kinds,

English, French, and American Clocks.

BEST ELECTRO-PLATED WARE,

In all its varieties of manufacture;

Bronze and Parian Ware,

Table Cutlery,

Penknives,

Scissors,

Razors,

Dressing Cases in Leather and Wood,

Bronze Urns and Kettles.

Electro-plated Spoons, Forks, Ladles, &c.

**THERMOMETERS, BAROMETERS,
MICROSCOPES,**

Telescopes, Opera and Field Glasses,

Spectacles, Eye Glasses, &c.

S. & L. are constantly manufacturing
SILVER TEA AND COFFEE SETS,
Jugs, Cups, Salvers, Trays, Inkstands, Forks,

Spoons, Ladles, Napkin Rings,

Butter Knives, &c., &c.

Regulation Swords, Belts, Sashes. &c., &c.

RIFLES,

Of various celebrated Makers.

S. & L. respectfully invite Travellers and Strangers to visit their establishment,

CATHEDRAL BLOCK.

Notre Dame Street,

Montreal.

St
7
D
rea
F
and
stea
Mon
secu
com
app
"Cit
betw
depa
For
prop
plain
Steam
emplo
For

Age

Or to the

SOAP**JOHN****SHOE &****AMES**

Manufact

No. 15 St

CAMPB

Nos. 9 & 11

Liberal advan

J. M. JO

Leather

Liberal advances

FORWARDING.

**DICKINSON'S
OTTAWA, RIDEAU, AND LAKE
CHAMPLAIN FORWARDING LINE.**

Stock composed of 11 Steamers & 45 Barges.

This old and well established Line is prepared to receive Freight as formerly, at reasonable rates.

For local freight between Montreal, Ottawa and Rideau Canal, four first-class freight steamers will afford a daily departure from Montreal and Ottawa, Sunday excepted, thus securing greater despatch than formerly, and connecting at Ottawa with the first-class upper-cabin passage and freight steamers "City of Ottawa" and "Bytown" running between Ottawa and Kingston, affording four departures per week from each place.

For transport of sawed lumber and other property to and from all ports on Lake Champlain and Quebec, an efficient Line of Tug Steamers, with Barges, will as formerly be employed.

For particulars apply to

GEORGE HEUBACH,
Acting-Agent, Montreal.

JAS. SWIFT,

Agent, St. Lawrence Wharf, Kingston;

JAS. RATH,

Agent, Smith's Falls;

W. D. WADDELL,

Agent, St. Peter Street, Quebec;

Or to the proprietor.

M. K. DICKINSON,
Canal Basin, Ottawa.

SOAP MANUFACTURERS, &c.

JOHN MATHEWSON & SON,
Soap, Candle and Oil
Manufacturers,
Montreal.

SHOE & LEATHER DEALERS.

AMES, MILLARD & CO.,
Manufacturers of and Wholesale Dealers
in
Boots and Shoes,
No. 15 Saint Peter Street, Montreal.

CAMPBELL BRYSON,
Leather Merchant,

Nos. 9 & 11 Lemoine Street, Montreal.

Liberal advances made on Consignments.

J. M. JONES & CO.,

Leather Commission Merchants,
Montreal.

Liberal advances made on all consignments.

MONTREAL TO OTTAWA.

1865

**THE OTTAWA RIVER
NAVIGATION COMPANY'S MAIL
STEAMERS.**

Office (new No.) 153 Great Saint
James Street,

opposite Ottawa Hotel, first door east of the
American Church.

Train leaves Bonaventure Street Depot every morning (Sundays excepted) at seven o'clock, connecting at Lachine with Steamer *Prince of Wales* for Carillon; then by Railway to Grenville, connecting with Steamer *Queen Victoria* for Ottawa City at 6 P.M.

Tourists will find this a delightful trip.

Parcel Express daily.

Further information and tickets can be had at the Railway Depot; Office, Great St. James Street; or on board the Steamers.

R. W. SHEPHERD, President.

LENNOXVILLE, C. E.

ALBION HOTEL—Ample accommodation for travellers. Attention given to visitors to *Bishop's College*, and to the Copper Works. Charges moderate.

PROSPER OLIVIER, Proprietor.

QUEBEC.

CANADA TRUSS FACTORY.
F. CROSS, Surgical Machinist and Inventor and Manufacturer of all kinds of Instruments for Physical Deformities,
22 St. John Street, within, Quebec, C. E.
For sale by all Druggists in Canada.

COATICOOK, C. E.

COATICOOK HOUSE,
by Harty & Harnden.
Free carriage to and from all Passenger Trains

PRESCOTT.

INTERNATIONAL HOTEL.
L. H. DANIELS - Prescott, C. W. - Proprietor.
A new first class House, with new Furniture throughout. Omnibuses to and from the cars and boats free. A first class Billiard Room attached.

THE CANADIAN EXPRESS COMPANY

Forward Merchandise, Money, and Packages of every description, collect Bills with Goods, Notes and Drafts, throughout the

CANADAS AND THE UNITED STATES,

Running daily (Sundays excepted) over the entire line of the

GRAND TRUNK RAILWAY,

THE GREAT WESTERN (Toronto and Hamilton),

PRESCOTT & OTTAWA, BROCKVILLE & OTTAWA, and PORT HOPE & PETERBOROUGH RAILROADS,

In charge of Special Messengers.

Packages and Freights forwarded by the Montreal Ocean Steamship Company to and from all parts of Europe,

Debenture Goods or Goods in Bond will be promptly attended to and forwarded with despatch. Invoices should be sent with all Goods going to the United States.

Montreal—D. T. IRISH, Agent.

Portland—J. G. PRENDLE, “

Toronto—M. H. IRISH, “

Hamilton—J. D. IRWIN, “

Kingston—J. C. CLARK, Agent.

Ottawa—W. H. SAWYER, “

Quebec—W. C. SCOTT, “

Liverpool, England—No. 22 Tower Buildings, Water Street, ALEX. BLACKWOOD, Agent.

G. CHENEY, Supt.

KINGSTON.

CANADIAN ENGINE AND MACHINERY COMPANY.

—
Authorized Capital, \$800,000. Paid up, \$200,000.
—

Works, KINGSTON, Canada West,

June, 1865.

This Company's Works, situated on Lake Ontario, and connected by a siding with the Grand Trunk Railway of Canada, are now in full operation, and the Company is prepared to build LOCOMOTIVE, MARINE, and FIRE ENGINES, and Machinery generally, IRON STEAM VESSELS, &c., &c.

There has lately been constructed at this Company's Works one of the fastest Iron Steamers now on the lakes, the property of C. F. Gildersleeve, Esq.

The Works are under the charge of a practical Superintendent.

Estimates (on specifications) or any other information, can be obtained on application to the undersigned.

ROBERT WRIGHT,

Secretary and Treasurer.

Hamilton,

HAMILTON.

R. M. WANZER & CO.,

MANUFACTURERS, DEALERS AND EXPORTERS

OF

A VERY SUPERIOR QUALITY

OF

SEWING MACHINES,

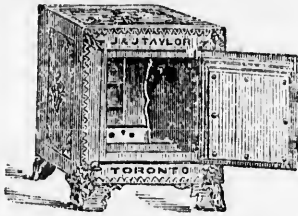
For Harness and Boot and Shoe Manufacturers, and for
the manufacturing of all kinds of Wearing Apparel,
from the finest fabric to the coarsest of Beaver Cloth,
in the best workman-like manner.

—
All Machines make the Double-Lock Stitch alike on
both sides.

—
Prices from \$20.00 to \$40.00.

—
P. S.—A liberal discount to dealers.

Hamilton, 1st April, 1865.

TORONTO.**TORONTO SAFE WORKS.****J. & J. TAYLOR,**

TORONTO,

Manufacturers of

Fire- & Burglar-Proof Safes,

the only Safes for sale in Canada that
never fail to preserve their contents even in
the hottest fires.

-AGENTS:

JAMES HUTTON & CO.,
15 St. Helen Street, Montreal.

H. S. SCOTT & CO.,
22 Buade Street, Quebec.

 Manufactory - Palace Street, Toronto.

Send for a Price List.

TORONTO.**DREDGE & WILSON,**

Wholesale Stationers,

53 Yongo Street, Toronto.

WHITBY.**HAM & JONES.**SOLICITORS IN CHANCERY,
WHITBY, C.W.

J. V. HAM.

C. A. JONES

PORT HOPE, C. W.**HASTINGS HOUSE,**John Street, Port Hope,
by Thomas Warren Hastings.**HAMILTON.****ESTABLISHED 1846.****"THE SPECTATOR,"**

Published at Hamilton, C.W.

	TERMS:	
Daily, per mail	- - - - -	\$5.00
Weekly, " "	- - - - -	\$1.00

T. & R. WHITE,
Publishers & Proprietors.
Hamilton, C.W., April, 1865.

SARATOGA SPRINGS.**CONGRESS HALL,**

SARATOGA SPRINGS.

This favorite Hotel will be open for the reception of guests on the

FIRST DAY OF JUNE.

Its advantageous location, adjoining the celebrated Congress Spring, and
the beautiful Park by which it is surrounded, make it a most desirable
resort for those in search of health or recreation.

Greatly enlarged, improved, refitted and refurnished, it has no superior,
and few equals, as a first-class Hotel.

HATHORN & McOMBER,*Proprietors.*

THE LIVERPOOL & LONDON AND GLOBE

INSURANCE COMPANY.

CAPITAL - - - - -	\$10,000,000
INVESTED FUNDS - - - - -	16,061,215
THE ANNUAL REVENUE FOR 1865 - - - - -	5,000,000
FUNDS INVESTED IN CANADA - - - - -	300,000

HEAD OFFICES:

1 DALE STREET, LIVERPOOL.

20 AND 21 POULTRY, AND 28 REGENT STREET, LONDON.

CORNER OF PLACE D'ARMES AND GREAT ST. JAMES STREET, MONTREAL.

CANADA BOARD OF DIRECTORS.

T. B. ANDERSON, Esq., Chairman, (President Bank of Montreal.)

ALEX. SIMPSON, Esq., Deputy Chairman, (Chairman Ontario Bank.)

HENRY STARNES, Esq., (Manager
Ontario Bank.)

E. H. KING, Esq., (General Manager
Bank of Montreal.)

HENRY CHAPMAN, Esq., Merchant.

G. F. C. SMITH, *Resident Secretary.*

F. A. BALL, Hamilton, C. W. } *Inspectors.*
JAMES SPIER, Montreal, }

FIRE and LIFE INSURANCE Business transacted on the most favorable terms.
Short period GRAIN and other risks, taken on advantageous terms and at moderate rates.

The Directors having received instructions from the Home Office to introduce the Life Branch of this Company in Canada, have much pleasure in stating that they are now prepared to grant Life Policies and Annuities, and to secure to their clients all the benefits derivable from the system of Life Assurance.

The high position and large patronage hitherto enjoyed by the Company in the Fire Department will, it is hoped, aid in securing for it a share of Life risks.

"TABLES OF RATES"

adapted to the circumstances of all classes may be obtained at the Montreal Offices and of the Company's Agents generally throughout the Provinces.

Canada Business under the sole control of the Montreal Board.

AGENCIES established throughout Canada.

G. F. C. SMITH,
Resident Secretary Canada Branch,
Montreal.

IMPORTANT TO FARMERS.

CANADIAN SUPER-PHOSPHATE.—A Standard Manure for all Field and Garden crops. It matures crops from ten to twenty days earlier, and greatly increases the yield. Price \$50 per ton, in barrels of about 200 lbs. each. It is also put up in \$1 packages for retail. For further information, please address letter to

E. L. SNOW,
Montreal.

