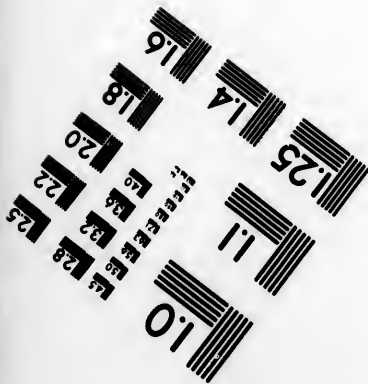
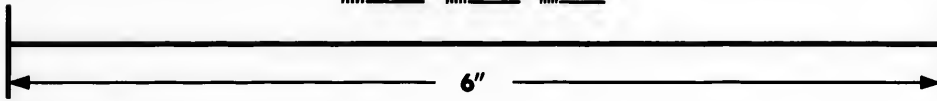
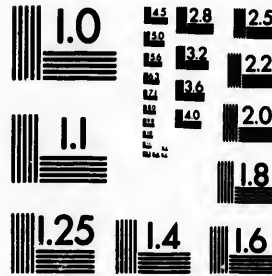


**IMAGE EVALUATION
TEST TARGET (MT-3)**



**Photographic
Sciences
Corporation**

23 WEST MAIN STREET
WEBSTER, N.Y. 14590
(716) 872-4503

Can

**CIHM/ICMH
Microfiche
Series.**

**CIHM/ICMH
Collection de
microfiches.**



Canadian Institute for Historical Microreproductions. / Institut canadien de microreproductions historiques

© 1987

Technical and Bibliographic Notes/Notes techniques et bibliographiques

The Institute has attempted to obtain the best original copy available for filming. Features of this copy which may be bibliographically unique, which may alter any of the images in the reproduction, or which may significantly change the usual method of filming, are checked below.

L'institut a microfilmé le meilleur exemplaire qu'il lui a été possible de se procurer. Les détails de cet exemplaire qui sont peut-être uniques du point de vue bibliographique, qui peuvent modifier une image reproduite, ou qui peuvent exiger une modification dans la méthode normale de filmage sont indiqués ci-dessous.

- | | |
|------------------------------------------------------------------------------------------------------------------------------------------------------------------------------------------------------------------------------------------------------------------------------------------------------------------------------------------------|--------------------------------------------------------------------------------------------------------------------------------------------------------------------------------------------------------------------------------------------------------------------------------------------------------------------------------------------|
| <input type="checkbox"/> Coloured covers/
Couverture de couleur | <input type="checkbox"/> Coloured pages/
Pages de couleur |
| <input type="checkbox"/> Covers damaged/
Couverture endommagée | <input type="checkbox"/> Pages damaged/
Pages endommagées |
| <input type="checkbox"/> Covers restored and/or laminated/
Couverture restaurée et/ou pelliculée | <input type="checkbox"/> Pages restored and/or laminated/
Pages restaurées et/ou pelliculées |
| <input type="checkbox"/> Cover title missing/
Le titre de couverture manque | <input checked="" type="checkbox"/> Pages discoloured, stained or foxed/
Pages décolorées, tachetées ou piquées |
| <input type="checkbox"/> Coloured maps/
Cartes géographiques en couleur | <input type="checkbox"/> Pages detached/
Pages détachées |
| <input type="checkbox"/> Coloured ink (i.e. other than blue or black)/
Encre de couleur (i.e. autre que bleue ou noire) | <input checked="" type="checkbox"/> Showthrough/
Transparence |
| <input type="checkbox"/> Coloured plates and/or illustrations/
Planches et/ou illustrations en couleur | <input type="checkbox"/> Quality of print varies/
Qualité inégale de l'impression |
| <input type="checkbox"/> Bound with other material/
Relié avec d'autres documents | <input type="checkbox"/> Includes supplementary material/
Comprend du matériel supplémentaire |
| <input type="checkbox"/> Tight binding may cause shadows or distortion
along interior margin/
La reliure serrée peut causer de l'ombre ou de la
distorsion le long de la marge intérieure | <input type="checkbox"/> Only edition available/
Seule édition disponible |
| <input type="checkbox"/> Blank leaves added during restoration may
appear within the text. Whenever possible, these
have been omitted from filming/
Il se peut que certaines pages blanches ajoutées
lors d'une restauration apparaissent dans le texte,
mais, lorsque cela était possible, ces pages n'ont
pas été filmées. | <input type="checkbox"/> Pages wholly or partially obscured by errata
slips, tissues, etc., have been refilmed to
ensure the best possible image/
Les pages totalement ou partiellement
obscurcies par un feuillet d'errata, une pelure,
etc., ont été filmées à nouveau de façon à
obtenir la meilleure image possible. |
| <input checked="" type="checkbox"/> Additional comments:/
Commentaires supplémentaires:
[Printed ephemera] 1 sheet, [2] p. | |

This item is filmed at the reduction ratio checked below/
Ce document est filmé au taux de réduction indiqué ci-dessous.

10X	14X	18X	22X	26X	30X
<input type="checkbox"/>	<input type="checkbox"/>	<input type="checkbox"/>	<input type="checkbox"/>	<input checked="" type="checkbox"/>	<input type="checkbox"/>
12X	16X	20X	24X	28X	32X

The copy filmed here has been reproduced thanks to the generosity of:

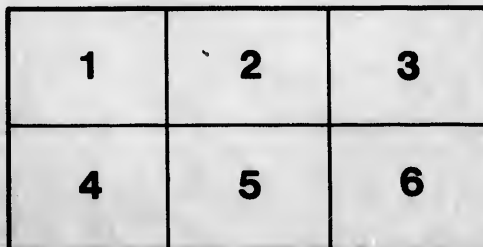
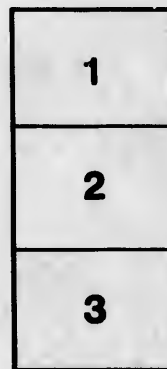
Metropolitan Toronto Library
Canadian History Department

The images appearing here are the best quality possible considering the condition and legibility of the original copy and in keeping with the filming contract specifications.

Original copies in printed paper covers are filmed beginning with the front cover and ending on the last page with a printed or illustrated impression, or the back cover when appropriate. All other original copies are filmed beginning on the first page with a printed or illustrated impression, and ending on the last page with a printed or illustrated impression.

The last recorded frame on each microfiche shall contain the symbol \rightarrow (meaning "CONTINUED"), or the symbol ∇ (meaning "END"), whichever applies.

Maps, plates, charts, etc., may be filmed at different reduction ratios. Those too large to be entirely included in one exposure are filmed beginning in the upper left hand corner, left to right and top to bottom, as many frames as required. The following diagrams illustrate the method:



L'exemplaire filmé fut reproduit grâce à la générosité de:

Metropolitan Toronto Library
Canadian History Department

Les images suivantes ont été reproduites avec le plus grand soin, compte tenu de la condition et de la netteté de l'exemplaire filmé, et en conformité avec les conditions du contrat de filmage.

Les exemplaires originaux dont la couverture en papier est imprimée sont filmés en commençant par le premier plat et en terminant soit par la dernière page qui comporte une empreinte d'impression ou d'illustration, soit par le second plat, selon le cas. Tous les autres exemplaires originaux sont filmés en commençant par la première page qui comporte une empreinte d'impression ou d'illustration et en terminant par la dernière page qui comporte une telle empreinte.

Un des symboles suivants apparaîtra sur la dernière image de chaque microfiche, selon le cas: le symbole \rightarrow signifie "A SUIVRE", le symbole ∇ signifie "FIN".

Les cartes, planches, tableaux, etc., peuvent être filmés à des taux de réduction différents. Lorsque le document est trop grand pour être reproduit en un seul cliché, il est filmé à partir de l'angle supérieur gauche, de gauche à droite, et de haut en bas, en prenant le nombre d'images nécessaire. Les diagrammes suivants illustrent la méthode.

varieties of wheat!

The P. Master

SUPPLEMENT TO THE FARMER'S ADVOCATE.

LONDON, AUG. 17, 1888.

FALL WHEAT SEED TEST.

The land on which we have tested the following grain, has been good, strong clay land. The field contains ten acres well cultivated summer fallow. The largest portion is

TREDWELL which wheat this season appears to answer the best. It stands the winter well—the straw is stiff and stands well for the reaper, except a very few spots. The grain is good, well filled, and of a dull white color, the heads are long but half bald and half bearded. They both ripen and grow alike, and the grains can not be detected. We mentioned this peculiarity when first we introduced this wheat. There is a dispute regarding its being impossible to separate it. Two parties inform us they have the varieties now distinct—other parties have selected the heads and sown separately, and they inform us that the bald has produced some bearded heads and the bearded has produced bald heads. This peculiarity was mentioned to us of its inseparability, and we did not test that question, but were quite satisfied about the superiority of the grain. We leave this point for further remarks, perhaps some other farmer will solve this question. We believe this wheat on good clay land has given better general satisfaction than any other that is procurable in any quantity. This wheat is about eight days later in ripening than the American Amber. It is slightly attacked in some instances by the midge, but even by losing a few grains by the midge, the length of the head and number of kernels, the superiority of color and the standing quality of the straw make it sought after much more than any other variety that is generally known.

Many condemned us for our laudatory remarks of it, and called it a humbug and a swindle when we disseminated it by small packages or at \$3 per bushel. This season, many regret they had not procured it, as it has stood the winter well, is strong in the straw, of superior quality to the Mediterranean or Midge Proof, yielding a large crop and will sell at a higher price, besides costing from \$1 to \$2 less per acre to harvest. Our fields on which it is grown have never had a wild oat or Canada thistle in them. Perhaps the weather may have dimmed the color slightly, but we can safely recommend this as seed, and can supply the crop from twenty acres. We can command much more from others to whom we have supplied the seed, but will not vouch for the purity of other person's raising if we have not seen it. In procuring seed it is of great importance to be sure and not introduce Canada thistles or wild oats.

MEDITERRANEAN WHEATS.—We have four distinct varieties of this wheat; they are all bearded, the principal difference being in the color of the chaff and straw. This is an old and well tried variety, and is to be found on the farms of those farmers that are behind the times, and never take up any new thing unless it has been well tested by their more enterprising neighbors. It has large coarse grain, although it is now much improved. It yields a tolerably good crop, and perhaps for inferior farming and on low, wet land it may answer better than finer varieties. Until superior wheats were introduced, it answered a good purpose and should not yet be totally dis-

carded. It is rather apt to crinkle and lodge more than some varieties.

THE AMERICAN AMBER WHEAT or what is generally known as the midge proof, is yielding well. It is not entirely midge proof; we know of no wheat that is. We have seen midge in it but have never seen a crop of it much injured by the midge. Most persons in our vicinity having good, well cultivated clay lands, are rather dissatisfied with it, because it has been so badly lodged, preventing the full maturity of the berry and causing a very great additional expense in harvesting. Tredwell in the same field, sown at the same time, was all taken off with the reaping machine, but the machine had to be abandoned in taking off the midge proof. Many pieces we know of have been cut with the scythes, the cradles, even, having been abandoned; still on light, sandy soils, there is not such reason to dread the lodging, and on such lands we think it may often be preferred to the Tredwell. We believe there will be a larger breadth of American Amber and Tredwell wheats sown than of any other kinds. Tredwell is most suitable for clay soils, and American Amber for sandy soils.

DAIRY'S WHEAT, known in many sections under the name of White Midge Proof, is short in the head and closely set; it is round, short and plump in the grain. The straw is moderately stiff, and with us it has done well this year, much better than last. We deem it rather more liable to the attacks of the midge, than the fore-named wheats. There are many that prefer it. This wheat requires early or quick growing land, and if it matures early it will yield a large crop of fine wheat; on late, cold lands it is apt to rust and to suffer much from attacks of the midge. This wheat deserves a trial in each section. In some sections it is now preferred to the Tredwell. We have, at a very great expense, proceeded with our testing, importing, and disseminating of grain. The results of this year's harvest have crowned us with success.

WEEKS' WHEAT is bearded; appears much like the Mediterranean, but stands well in the ground. The grain is white, plump, and large. This wheat deserves extended trial. If anyone in Canada has any to spare, please inform us at once.

CALIFORNIA WHEAT is very long in the head, bald, much of it winter killed; badly attacked by midge, rust, and condemned.

BOUTON WHITE short in the head, short, plump, white grain. Straw stands well. Eight days earlier than any other variety tested. Deserves further trial.

SADONICA.—Good mottled grain, very fine and stiff in straw. Stands well, rather long in head, and bald. Deserves further trial.

LANCASTER RED GRAIN.—Dark in color, stands winter well. Might be tried again.

SARONKA.—Badly winter killed. Grain most inferior. Condemned.

BERDENCA from Russia.

AMBER WHEAT, bald, long in head. Good grain. Deserves further trial.

SALA RED from SARONKA, has long, bald head, but very downy grain—Inferior. Condemned.

BORSMEAN BALD WHEAT badly rusted.—Condemned.

AUSTRALIAN WINTER KILLED.—Condemned.

Four kinds of English White Wheat, the finest samples sown, winter killed. Two kinds of Red Wheat, very fine samples, both winter killed.

The Kentucky Midge Proof—Moderate, but open head. Good grain. Deserves further trial, although it has not stood the weather as well as some other varieties.

The wheats for this fall's sowing will be the Tredwell, Deftis, the American Amber, and the Mediterranean.

Each of these kinds are answering well. Some of them are preferred in some sections, and condemned in others, and neither should be totally depended on as being the most suitable, as the seasons and localities, and attacks of the midge, vary very much. We commend the trial of new kinds only in small quantities. Should any new kind answer well, it will soon increase, and the cost or loss cannot be much; and if you are careful in procuring a small quantity, you can easily take away any impure seed or weed, which cannot be done so easily in a large field; and the small quantities disseminated by us, will be the purest and most carefully selected. It is much to be regretted that we are unable to find in Canada or the States, as clean and pure varieties as we should have, nor are our own as good as we wish to have them. We can but supply the best we have, and when we can find any better, we disseminate it. We have spared neither time or money to endeavor to procure the best.

See the paper for fuller accounts.

TO ADVERTISERS.

We intend issuing a supplement of many thousand extra copies at the time of the Provincial Exhibition. It will afford Agricultural advertisers such an opportunity of letting manufacturers and stock men know where they can be supplied as is obtained in no other way than at our ware-room, seeds and implements of the best kinds are sold and shipped to all parts. Stock is also kept and sold. If you wish to advertise in our supplement, which will be read by farmers, you can send in your orders immediately, as it will be published early, and will be sent to every Post Office in Ontario, and to our subscribers, who are leading agriculturists of the different sections, and the other farmers are led by them. A large posting bill will also be published, and it will also be very widely circulated. Terms of advertisement in either, the same as in the "Farmer's Advocate," 10 cts per line, agate space.

PROVINCIAL EXHIBITION OF THE AGRICULTURAL AND ARTS ASSOCIATION OF ONTARIO. TO BE HELD AT LONDON, ON THE

21st TO THE 24th SEPT., 1889.

Persons intending to exhibit will please take notice that the entries of articles in the respective classes must be made with the Secretary, at Toronto, on or before the undermentioned dates, viz.:

Horses, Cattle, Sheep, Swine, Poultry, on or before Saturday, August 14th.

Grain, Field Roots and other Farm Products, Agricultural Implements, Machinery, and Manufactures generally, on or before Saturday, August 23d.

Horicultural Products, Ladies' Work, the Fine Arts, &c., on or before Saturday, September 11th.

Price Lists and Blank Forms for making the entries upon, can be obtained from the Secretaries of all Agricultural Societies and Mechanics' Institutes throughout the Province.

HUGH C. THOMPSON, Secretary.

Richard Hill

Prices!—turn over

AGRICULTURAL EMPORIUM PRICE LIST FOR AUGUST.

GRAIN.

	Per 4 oz. Packet post paid	Per Peck bag - included.	Per two bush. bag included.	Per 10 bush.
TREDWELL,	35c	\$1	\$5	\$1.75 per bush.
DEIHLS,	35c	\$1	\$5	\$1.75 per bush.
AMERICAN AMBER	25c	75c	\$4	\$1.50 per bush.
MEDITERRANEAN,	25c	75c	\$4	\$1.50 per bush.
WEEKS' WHITE	50c			
BOULTON WHITE	50c			

Fenton, Taunton Dean, Walghast and Hunters, imported and untried varieties 25c per packet; \$1.25 per peck, bag included.
EARLY ROSE POTATOES 2 lb., 25c

IMPLEMENTS.

THE EMPIRE SEED DRILL, the 1st Prize Machine, giving entire satisfaction; without Grass Sower.....	\$65
With Grass Sowing Attachment.....	\$70
THE CELEBRATED LITTLE GIANT THRESHER AND SEPARATOR, highly approved of; price in Cash.....	\$100
On Credit, with seven per cent. interest.....	\$105
With Horse Power, Tumbling Rod, Band Wheel and 60 feet of belting.....	\$180
On Credit, at seven per cent. interest.....	\$185
SELLS' Patent CIDER PRESS, 1st prize.....	\$30
Double Geared.....	\$35
ABELL'S Patent GRAIN CRUSHER.....	\$30, \$35 & \$40
GARDENER'S PATENT ROOT CUTTER.....	\$28
STRAW CUTTERS with reversed feed, 12 inches.....	\$50
do. do. without reversed feed.....	\$45
do. do. do. do. do. 10½ inches.....	\$40
do. do. do. do. do. 9½ do.....	\$36
do. do. do. do. do. 9 do.....	\$30
For Hand Use.....	\$30

THE MONTHLY FARMERS' ADVOCATE FOR 1870.

NOW IS THE TIME TO SUBSCRIBE.

The Remainder of this Year's Numbers FREE.

SIXTEEN MONTHS FOR \$1,

TO NEW SUBSCRIBERS IF THE CASH IS SENT IN AT ONCE.

This paper is Edited by a practical Farmer, and it furnishes accounts of the

AGRICULTURAL EMPORIUM

Where Seeds are Imported, Tested and disseminated, and where information is given in regard to Stock and implements. It is commended by Agricultural Societies and County Councils. No farmer should be without it.

Agents wanted in each township and county where they are not yet established, to take subscriptions for the paper and solicit orders for Seeds and implements. Terms of the paper \$1 per annum in advance. Advertisements ten cents per Line.

Address.

W. WELD,

LONDON, ONT., D.C.

Please Post up.

