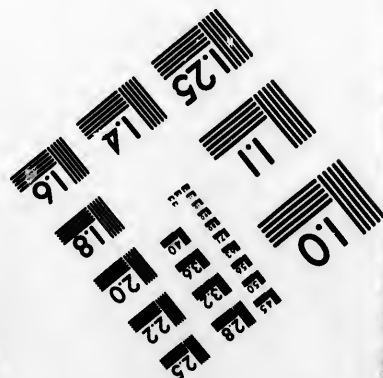
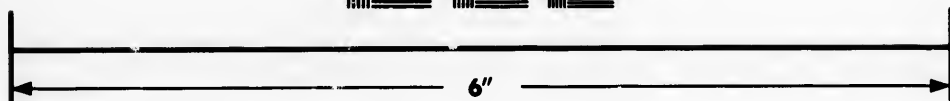
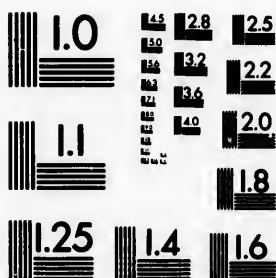


**IMAGE EVALUATION  
TEST TARGET (MT-3)**



**Photographic  
Sciences  
Corporation**

23 WEST MAIN STREET  
WEBSTER, N.Y. 14580  
(716) 872-4503

**CIHM/ICMH  
Microfiche  
Series.**

**CIHM/ICMH  
Collection de  
microfiches.**



**Canadian Institute for Historical Microreproductions / Institut canadien de microreproductions historiques**

**© 1983**



The copy filmed here has been reproduced thanks to the generosity of:

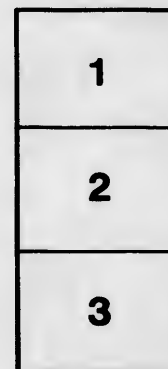
Metropolitan Toronto Library  
Canadian History Department

The images appearing here are the best quality possible considering the condition and legibility of the original copy and in keeping with the filming contract specifications.

Original copies in printed paper covers are filmed beginning with the front cover and ending on the last page with a printed or illustrated impression, or the back cover when appropriate. All other original copies are filmed beginning on the first page with a printed or illustrated impression, and ending on the last page with a printed or illustrated impression.

The last recorded frame on each microfiche shall contain the symbol  $\rightarrow$  (meaning "CONTINUED"), or the symbol  $\nabla$  (meaning "END"), whichever applies.

Maps, plates, charts, etc., may be filmed at different reduction ratios. Those too large to be entirely included in one exposure are filmed beginning in the upper left hand corner, left to right and top to bottom, as many frames as required. The following diagrams illustrate the method:



L'exemplaire filmé fut reproduit grâce à la générosité de:

Metropolitan Toronto Library  
Canadian History Department

Les images suivantes ont été reproduites avec le plus grand soin, compte tenu de la condition et de la netteté de l'exemplaire filmé, et en conformité avec les conditions du contrat de filmage.

Les exemplaires originaux dont la couverture en papier est imprimée sont filmés en commençant par le premier plat et en terminant soit par la dernière page qui comporte une empreinte d'impression ou d'illustration, soit par le second plat, selon le cas. Tous les autres exemplaires originaux sont filmés en commençant par la première page qui comporte une empreinte d'impression ou d'illustration et en terminant par la dernière page qui comporte une telle empreinte.

Un des symboles suivants apparaîtra sur la dernière image de chaque microfiche, selon le cas: le symbole  $\rightarrow$  signifie "A SUIVRE", le symbole  $\nabla$  signifie "FIN".

Les cartes, planches, tableaux, etc., peuvent être filmés à des taux de réduction différents. Lorsque le document est trop grand pour être reproduit en un seul cliché, il est filmé à partir de l'angle supérieur gauche, de gauche à droite, et de haut en bas, en prenant le nombre d'images nécessaire. Les diagrammes suivants illustrent la méthode.

aire  
détails  
ues du  
modifier  
ger une  
filmage

ées

re

y errata  
nd to

nt  
ne pelure,  
çon à



32X

P 529.34

25

SEASON 1899

1899. Brotherhood...



REMINISCENCE OF 1898

**BROTHERHOOD OF ST. ANDREW**

**SUMMER HOUSE**

**KEW BEACH,**

- -

**TORONTO**



**T**HE Summer House Committee of the Brotherhood of St. Andrew announce that the residence No. 2 Waverley Road, Kew Beach (known as the Brotherhood House),

has again been leased for the season of 1899.

The object of securing a summer house conducted under the auspices of the Brotherhood was to provide comfortable accommodation for members and friends of the Church, and give opportunity to those whose business prevents an extended vacation of enjoying the benefits of such a healthful resort at a minimum cost.

This is the third season for the house, and in order that it may be an entire success we must have not only the sympathy but hearty support of all Churchmen in the city.

The residence is situated upon the shores of Lake Ontario about four miles from the centre of the City, two minutes walk from street cars and at convenient wheeling distance.

A spacious balcony commands a magnificent view of the Lake, Toronto Island and the City to the West, while to the East appear the Scarborough Heights.

In front of it stretches one of the most pleasant beaches for bathing in the district, while the building is equipped with dressing rooms and a large and commodious boat-house.

The dining room is large and airy and the sitting and music room cosy and neat.

The house opens under new management on the 15th of May ready for receiving guests on the 20th.

The rate for board (breakfast and six o'clock dinner, three meals on Sunday), and sleeping accommodation is \$3.50 per week. This year the catering will be in the hands of a very experienced person and will be excellent in quality and variety.

As the accommodation is limited to about thirty, application for rooms should be made at once.

For further particulars and information apply to any of the Committee.

[OVER]

W East 25 - Uncle J 50  
 V Jones 25 - Vera 25  
 Auntie H 50  
 " J 50

**SUMMER HOUSE COMMITTEE.**

- C. H. CLARK, - - - 25 Avenue Road.
- E. M. CARLTON, - - 40 McGill St.
- G. H. GOWAN, - - - 33 Adelaide St. E.
- CHAS. EVANS-LEWIS. - 43 Adelaide St. E.
- E. A. V. MITCHELL, - 248 Jarvis St.



1000  
 225  
 10  
 3.90  
 7.75



