

ANNUAL REPORT

OF THE

INSPECTOR

OF THE

PUBLIC SCHOOLS

OF THE

CITY OF TORONTO,

FOR THE

YEAR ENDING, DECEMBER 31ST, 1884.

TORONTO:

MODEL PRINTING Co., 18 ADELAIDE STREET EAST.

1885.



7.

ANNUAL REPORT

OF THE

INSPECTOR

OF THE

PUBLIC SCHOOLS

OF THE

CITY OF TORONTO,

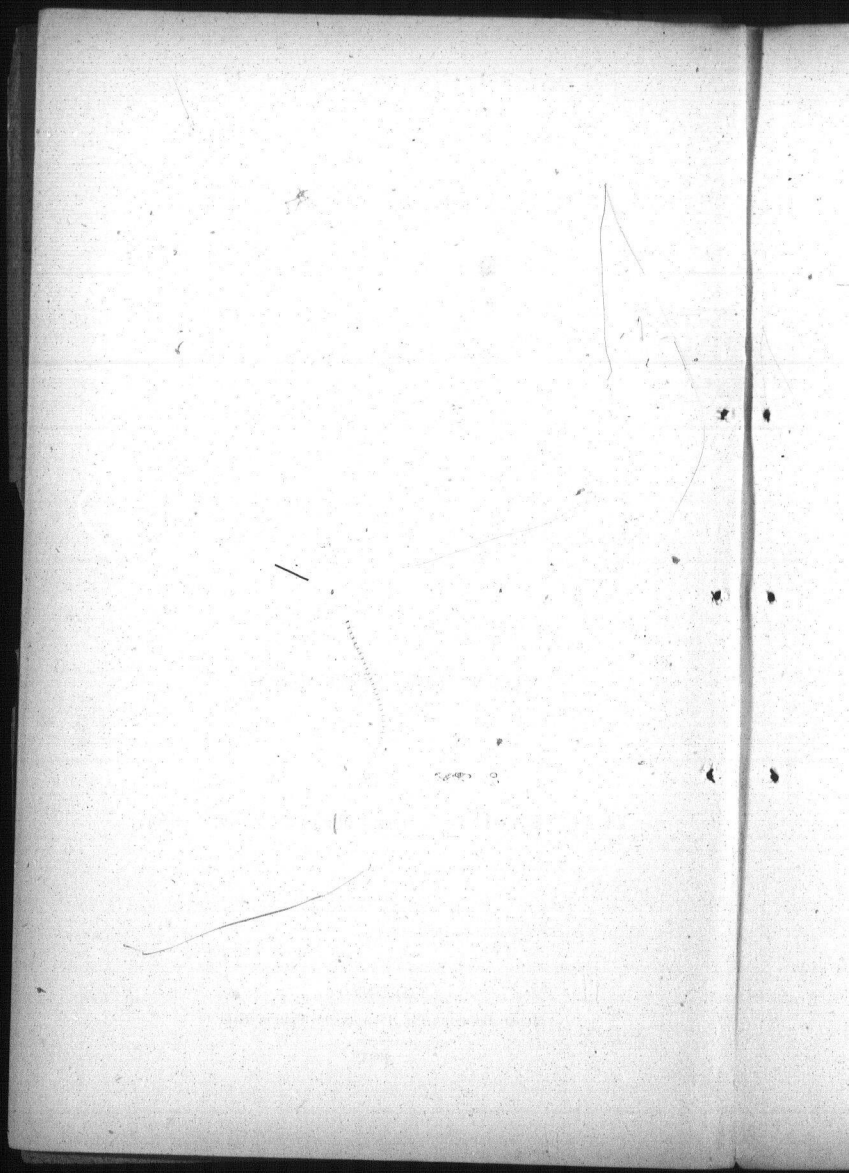
FOR THE

YEAR ENDING, DECEMBER 31ST, 1884.

TORONTO:

MODEL PRINTING Co., 18 ADELAIDE STREET EAST.

1885.



INDEX.

	Page.
Organization of the Board	5
List of Trustees	6
Inspector's Annual Report	9
Attendance	9
Certificates of Honor	13
Teachers	15
Kindergarten	15
School Accommodation	17
Promotion of Teachers	18
Night Schools	19
The City Model School	21
Toronto Teachers' Association	22
Progress of the Public School	26
Table A, Registered Numbers	29
" B, Average Attendance	31
" C, Absenteeism	33
" D, Lateness	35
" E, No. of Pupils to each Teacher	37
" F, Statistics Relating to Teachers	38
Report of Examiners	49
Examination Papers	61

APPENDIX.

Secretary-Treasurer's Financial Statements	1
--	---



Organization of the Board.

Chairman.

FOLLIS JOHNSTON, Esq.

Standing Committees.

I.—On Finance, Assessment and Salaries.

MESSRS. MARA (*Chairman*.) BROWN, HAMILTON, HILL

II.—On School Management.

MR. McMURRICH (*Chairman*.) DRS. OGDEN AND KENNEDY; AND
MESSRS. LEE, RODEN, CROMBIE AND BELL.

III.—On Sites and Buildings.

MESSRS. SOMERS (*Chairman*.) GALLEY, DONOVAN, LYON,
MEDCALF, WHITESIDE AND MACDONALD.

IV.—On Printing and Supplies.

MESSRS. BOXALL (*Chairman*.) JAMES; WESTMAN, MEREDITH
AND POTTER.

V.—On Night Schools.

MESSRS. JAMES (*Chairman*.) RODEN, BOXALL, LYON, DONOVAN,
CROMBIE AND DR. KENNEDY.

Officers of the Board.

SCHOOL INSPECTOR,	JAMES L. HUGHES.
SECRETARY,	W. C. WILKINSON.
INSPECTOR'S ASSISTANT,	HENRY BROWNE.
SOLICITOR,	W. B. McMURRICH, M.A.
TRUANT OFFICER,	JOHN T. THOMPSON.
AUDITOR,	R. C. FITZGERALD.

Public School Board.

1884.

Ward of St. Lawrence.

	TERM EXPIRES
ALFRED MEDCALF,	Dec. 1884
ELIJAH WESTMAN,	Dec. 1885

Ward of St. David.

EDWARD GALLEY,	Dec. 1884
E. P. RODEN,	Dec. 1885

Ward of St. Thomas.

THOMAS WHITESIDE,	Dec. 1884
R. B. HAMILTON,	Dec. 1885

Ward of St. James.

W. A. LYON,	Dec. 1884
WALTER S. LEE,	Dec. 1885

Ward of St. John.

F. SOMERS,	Dec. 1884
GEORGE BOXALL,	Dec. 1885

Ward of St. Andrew.

J. E. KENNEDY, M.D.	Dec. 1884
MARCELLUS CROMBIE, M.A., LL.B.,	Dec. 1885

Ward of St. George.

GEORGE McMURRICH,	Dec. 1884
CHARLES BROWN,	Dec. 1885

Ward of St. Patrick.

W. MARA,	Dec. 1884
W. W. OGDEN, M.D.	Dec. 1885

Ward of St. Stephen.

FOLLIS JOHNSTON,	Dec. 1884
FREDERICK DONOVAN,	Dec. 1885

Ward of St. Paul.

JOHN JAMES,	Dec. 1884
WM. J. HILL,	Dec. 1885

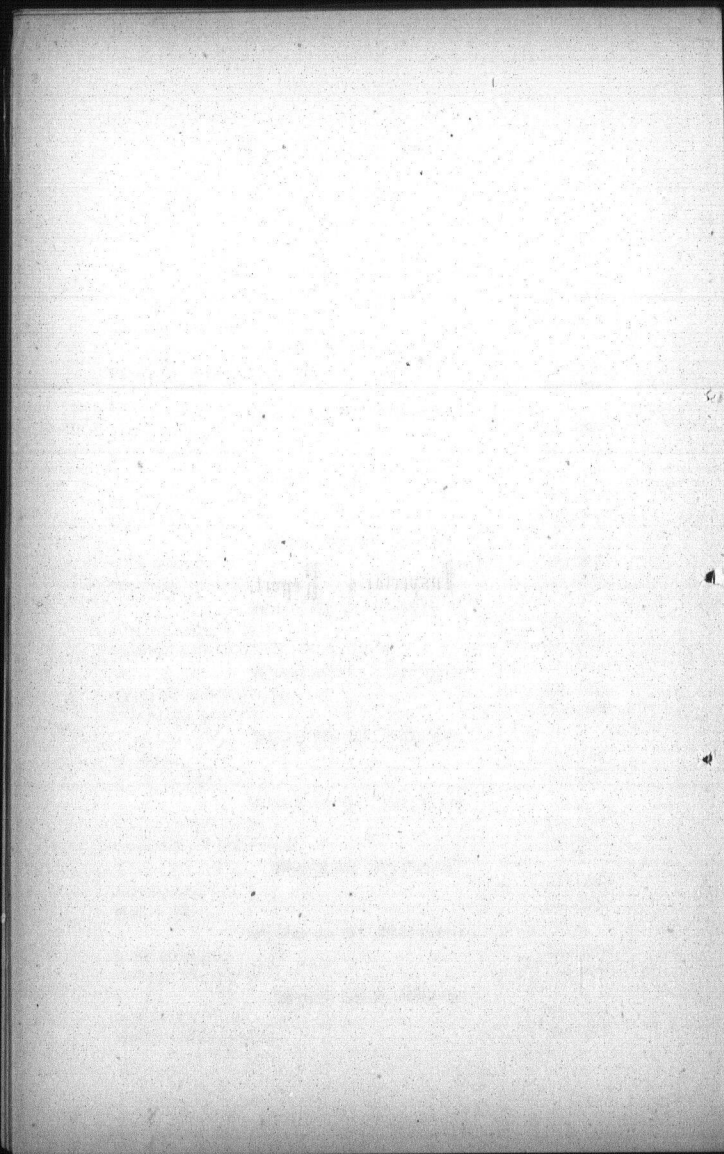
Ward of St. Matthew.

J. W. POTTER,	Dec. 1884
PETER MacDONALD,	Dec. 1885

Ward of St. Mark.

WM. BELL,	Dec. 1884
HENRY MEREDITH,	Dec. 1885

Inspector's Report.



INSPECTOR'S ANNUAL REPORT.

To the Board of Public School Trustees of the City of Toronto :

GENTLEMEN,

In accordance with a Resolution of your honorable Board, I respectfully submit the twenty-fifth Annual Report of the Schools under your charge.

Appended to the Report will be found Statistical Tables which give in detail all important particulars relating to teachers, pupils, attendance, absenteeism, tardiness, studies pursued, cost of maintenance, &c.

ATTENDANCE.

The total number of pupils registered during the year was 17,579. Last year it was 15,807.

The average daily attendance was 11,758. Last year it was 10,111.

699 pupils attend school less than 20 days.

1569	"	"	"	"	between 20 and 50 days.
3706	"	"	"	"	50 " 100 "
3066	"	"	"	"	100 " 150 "
8539	"	"	"	"	150 " 200 "

The number who attended school for over 100 days is 10,050, or more than 66 per cent. of the total registered number.

The most correct idea of the relation of the average to the Registered Attendance is obtained by comparing the average of Monthly Averages with the average of Monthly Registered Numbers.

The average of Monthly Registered Numbers was 13,281. This shows an increase compared with last year of 2,090, (See Table A.)

The average of Monthly Average Numbers was 11,681. This shows an increase of 1,681 when compared with the corresponding number of last year. (See Table B..)

The average of Monthly Averages was 88 per cent. of the average of Monthly Registered Numbers.

The best average for any month in the year was 91.8 the average for December.

The largest number was registered in October, 14,124, and the smallest number in February, 12,067.

The comparatively large number who attend school for less than 100 days can be easily accounted for, when it is remembered that most of the scholars who leave school, do so at the close of the first term. The report would appear more favorable if the year closed in July instead of December.

The following statement shows the Average Registered Number in each School during the year :—

SCHOOLS.	Average Registered No.	No. of Teachers.	Average per Teacher.
Dufferin.....	708	12	59
Wellesley	989	16	62
Ryerson	621	12	52
Phoebe Street	778	12	64
Hope "	756	12	63
Jesse Ketchum	677	12	56
John Street	554	10	55
Park	528	8	66
Winchester Street.....	519	8	65
Victoria "	555	11	55*
Niagara "	520	9	58*
Louisa "	466	9	52
Parliament "	425	6	71
George "	378	6	63
Church "	565	9	63
Elizabeth "	409	9	50*
Brant "	400	6	67
Bolton "	452	6	75
Bathurst "	560	8	70
Borden "	371	8	58*
Givins "	550	8	69
Palace "	263	4	66
York "	189	4	47
Rose Avenue.....	225	4	56
Eastern "	121	2	60
Mabel Street.....	128	2	64
Leslie "	74	2	37
Howard "	36	1	36
Dewson "	76	1	76
Boys' Home	78	1	78
Girls' "	76	1	76
Orphans' Home.....	115	1	115
Chestnut Street.....	78	1	78
Cottingham Street.....	127	2	63

* This is the attendance since the enlargement of these schools.

ATTENDANCE IN THE VARIOUS CLASSES.

The registered number in attendance during the year in the different grades was as follows :—

First Book.....	7,859
Second “	4,272
Third “	3,571
Fourth “	1,686
Fifth “	741

Of course, it should be remembered that large numbers of those who began the year, or who entered during the year in the First Book, were afterwards promoted to the Second Book. The same remark is true concerning the other classes.

I am glad to have to report that the number of pupils in the Third and Fourth Book classes has increased during the year very considerably. This increase will no doubt continue and a larger number of Third and Fourth Book classes will be required in the future. Two causes lead to this desirable result. The pupils, especially the girls remain longer at School than formerly, and the work of the lower classes is now accomplished in a shorter time.

LATENESS.

The high standard in the punctuality of the pupils has continued during 1884. The total number of cases of lateness in the whole year amounts to less than one-half of the registered number of pupils,

The following table shows the number of cases during the past eleven years :

Date.	Average Attendance.	Cases of Lateness.
1874	4,814	69,456
1875	6,386	65,364
1876	5,976	81,486
1877	6,860	15,272
1878	7,467	7,474
1879	8,144	6,615
1880	8,215	5,967
1881	8,409	5,980
1882	8,845	6,735
1883	10,111	7,681
1884	11,758	10,181

(See Table D.)

CERTIFICATES OF HONOR.

Certificates of Honor are awarded at the Christmas Vacation to such pupils only as have not been once absent or late, and whose conduct has been uniformly good, unless the absence or lateness shall have been occasioned by sickness of not more than three weeks' continuance, to be certified in writing by the pupils' parents or guardians.

These certificates are of two grades, and named respectively First Honor Certificates, and, Second Honor Certificates.

The First Honor Certificates are awarded to such pupils as have fulfilled the above-named conditions for two consecutive sessions.

The Second Honor Certificates are awarded to such pupils as have conformed to the said rules for one session during the year.

The following statement shows the number of Certificates given in the various schools at the close of 1884.

SCHOOLS.	First Honor.	Second Honor.	Total.
Dufferin.....	181	256	437
Wellesley.....	210	349	559
Rye son.....	118	174	292
Phœbe.....	126	156	282
John.....	110	142	252
Park.....	90	131	221
Winchester.....	85	173	258
Victoria.....	97	107	204
Niagara.....	60	121	181
Louisa.....	49	76	125
Parliament.....	85	112	197
George.....	40	65	105
Church.....	78	165	243
Elizabeth.....	53	109	162
Brant.....	45	103	148
Bathurst.....	63	117	180
Hope.....	110	177	287
Palace.....	36	64	100
York.....	12	24	36
Borden.....	53	98	151
Givins'.....	66	119	185
Eastern Avenue.....	12	31	43
Chestnut.....	0	5	5
Jesse Ketchum.....	78	192	270
Cottingham.....	13	29	42
Rose Avenue.....	19	51	70
Bolton.....	14	61	75
Leslie.....	3	12	15
Mabel.....	7	31	38
Howard.....	0	17	17
Total.....	1,918	3,267	5,180

TEACHERS.

There were 227 Teachers in the employ of the Board at the close of the year, exclusive of the special Teachers in Music, Drawing and Drill and Calisthenics.

There are 29 Male and 176 Female Teachers employed.

They hold Certificates as follows :—

First Class Provincial.....	52
First Class County Board.....	13
Second Class Provincial.....	155
Third Class.....	2
Kindergarten.....	5

THE KINDERGARTEN.

An additional Kindergarten was opened in September in Niagara St. School. Owing to the fact that the young ladies who were available for the position of Kindergartner had only been one year in training, it was decided to place two of them in each Kindergarten, with Miss Marean as Superintendent of both Kindergartens. Miss Louisa Currie and Miss Bruce Nudel were placed in charge in Victoria St., and Miss Carrie Lawson and Miss Edith Dawkins in Niagara St. The arrangement has given good satisfaction. There were seven volunteer assistants in addition to the above staff, who were engaged in studying the system, and who gave their services free in return for the training they received. In addition to the practice obtained in the Kindergartens all the young ladies engaged in them, both paid assistants and volunteers attended lectures during three afternoons each week, to receive instruction from Miss Marean in the philosophical principles on which the Kindergarten is founded and the methods by which these principles are practically developed and applied in the Kindergarten.

Miss Marean also gave lessons every Wednesday afternoon during the first half of the year to the teachers in the Primary Classes from all the schools. These lessons continue to be given to the young ladies in our City Model School who are being trained to be our teachers in the near future.

It is much too soon to begin to count the results of the establishment of the Kindergarten in our schools. The Kindergarten is not, as many people still imagine it to be, a magic plan for teaching reading, spelling, writing, &c. There is no attempt made in the Kindergarten to teach the ordinary subjects of the school programme, with the exception of drawing, which is one of the Kindergarten occupations, introduced with the double aim of training the hand, and cultivating the intellect. The chief aim of the Kindergarten so far as it relates to the mind, is to qualify the children for the ready and accurate acquisition of knowledge, instead of merely communicating a certain amount of information. It must be borne in mind, however, that the Kindergarten development is not confined to the mind. It includes the training of the whole being, and devotes specific attention to moral, physical, social and industrial education in addition to intellectual culture.

In estimating the influence of the Kindergarten it must fairly be borne in mind :—

1. That immediate educational effects are not of such importance as the ultimate results upon character.
2. That to test the influence of Kindergarten training even on the career of pupils in school, it will be necessary to wait until those who have had a Kindergarten training have passed through all the classes in the school course.
3. That in establishing the system at first the assistants are not thoroughly trained.

Where the system has been in existence for a sufficient period, the results have been most satisfactory. Kindergarten pupils when promoted to the higher classes are found to make the most rapid advancement in their studies, to have the best trained powers of observation, to be most fully qualified to deal with new subjects, and to be most easily controlled.

In our own city the few pupils who have passed from the Kindergarten to the Public School classes are doing exceedingly well. One primary teacher reports that she "would be willing to teach for less salary, if all her pupils had been previously trained in a Kindergarten." It is too soon, however, to form definite conclusions based upon our own experience in Toronto. Personally I do not regard the Kindergarten as an experiment. I have perfect faith in the soundness of its underlying philosophy and in the practical means devised for the exposition of its principles in the proper training of young children.

SCHOOL ACCOMMODATION.

The following additional accommodation was provided in 1884:

1. Two new wards, St. Mathew's and St. Mark's were added to the City. In the former there were two school buildings, one on Bolton Street containing four rooms, and the other on Leslie Street containing one room. In St. Mark's ward there were two school buildings, one on Mabel Street containing two rooms, and the other on Howard Street containing one room. The school on Leslie Street was divided by a partition during the mid-summer vacation so as to make it accommodate two classes.

2. A new school containing four rooms was erected in St. Stephen's ward, on Dewson Street, at a cost of \$7,106.50, exclusive of the site.

3. Victoria Street was re-modelled and enlarged by the addition of four rooms at a cost of \$9,476.30. It now contains twelve rooms.

4. Borden Street School was enlarged from a four to an eight room school, at a cost of \$6,662.25.

5. The three rooms in the third flat of the Elizabeth Street School were completed and prepared for occupation, at a cost of \$1,648.62.

6. The Niagara Street School was enlarged by the addition of two rooms, at a cost of \$3,781.94.

PROMOTION OF TEACHERS.

During the year the Board took action in accordance with the recommendation contained in my last report, and rescinded the rule preventing the promotion of teachers holding Second Class Certificates.

I strongly recommend that the system of payment of salaries, in accordance with the grades taught, be given up, and payment by length of service adopted in its stead. My reasons for suggesting this change are:

1. It will prevent unnecessary changes in the staff. In September 1884 there were over seventy promotions and transfers made, although the real number of vacancies on the staff was comparatively small. Nearly one-third of the teachers were removed from one School to another during the year, and more than one-third changed their classes. The evil effects of so many changes will at once be apparent to all. It is especially to be deplored in the case of head teachers.

2. It will enable the Board to classify the teachers according to their special talents. Undoubtedly the most difficult classes to teach and train are the primary classes. Some teachers who are well adapted for work in higher classes never attain to superior excellence in primary work. By requiring all teachers to begin with the lowest classes, we often place those who know least about teaching in the most important positions. It has frequently occurred during the last few years, that teachers who have shown great aptitude for success in junior classes, and who have become proficient in the best methods of teaching little children, have been promoted just when they were really qualified for performing their duties in the most effective manner; and novices appointed in their places.

3. It will enable the trustees to arrange the salaries of the teachers on a more simple and more satisfactory basis. I believe that the Board should adopt as a guiding principle the payment of slightly reduced salaries at first, and that the amount thus saved should be paid to the teachers who have been longer in the service.

NIGHT SCHOOLS.

The total number registered during the term in each School was as follows:

SCHOOLS.	Males.	Females.	Total.
Parliament Street	282	142	424
Elizabeth "	195	70	265
Niagara "	183	68	251
Bathurst "	206	75	281
Jesse Ketchum	136	19	155
Mabel Street	48		48
Total.....	1,050	374	1,424

The average attendance for the entire term was .

SCHOOLS.	Males.	Females.	Total.
Parliament Street.....	86	69	155
Elizabeth "	66	27	93
Niagara "	40	25	65
Bathurst "	88	33	121
Jesse Ketchum	50	10	60
Mabel Street	18		18
Total	348	164	512

The average attendance for each month for the term was :

SCHOOLS.	November.		December.		January.		February.	
	Males.	Females.	Males.	Females.	Males.	Females.	Males.	Females.
Parliament St. 118	61	98	72	72	59	56	50	
Elizabeth St. 73	35	94	29	54	22	42	22	
Niagara St. 82	25	55	26	38	26	24	21	
Bathurst St. 123	49	105	40	68	24	53	20	
Jesse Ketchum. 84	13	52	10	29	9	37	8	
Mabel St.				23		13		
	480	183	404	177	284	140	225	121

Many pupils, both male and female, petitioned to have the Schools kept open during March. This the Committee granted.

The attendance was :

SCHOOLS.	Males.	Females.
Parliament Street.....	88	26
Elizabeth "	24	19
Niagara "		19
Bathurst "	28	18
Mabel "	6	
Total	91	82

THE CITY MODEL SCHOOL.

For the session 1884-85 the attendance at the City Model School has been larger than at any previous time. The class includes twenty young ladies. They practise for a year in the following Schools: Victoria Street, Wellesley, Church Street, Phoebe Street, Bathurst Street, Winchester Street, Hope Street, George Street, Parliament Street, Rose Avenue, and Dewson Street Schools.

They attend lectures on Methods of Teaching, Discipline, School Management, Kindergarten Work, &c., on Monday, Tuesday, Wednesday, and Thursday afternoons. They receive in addition to the above professional training, special instruction in Elocution, Chemistry, and Mental Arithmetic.

After leaving our City Model School the students have to pass through the Normal School, in order to complete their professional training for Second Class Certificates.

I recommend the Board to give the graduates of our own training institution a preference over other ladies, whatever may be the Grade of their Certificates. I do so because:

1. Those who graduate from our own class are residents of the City. Most, if not all of them, are the daughters of ratepayers, and in most cases they have received their education in our own Public Schools, and afterwards in the Toronto Collegiate Institute to which many of them were sent as "scholarship" pupils.

2. Their observation and practice in our Schools during a whole year qualify them in the best possible way for successful teaching in accordance with the methods pursued in our Schools.

DRAWING.

Owing to the facts that no drawing books were adopted by the Board and that Mr. O'Brien, Superintendent of Drawing, believed it to be impracticable to introduce Drawing satisfactorily in the upper classes without having Drawing Books in the hands of the pupils, little has been done during the year in this subject,

except in the lower classes, where the teachers continue to use designing as one of the best means for developing the intellectual powers, as well as for training the eye and hand to work in harmony. I hope for better results in the higher classes in the near future, but I have no faith in any plan for teaching this subject, in which the greater part of the work of teaching is not done by the regular teachers.

MUSIC.

The progress in this subject is on the whole not so satisfactory as I could wish it to be. In many of the primary classes the work is as well done as could reasonably be expected, and even in the first book classes whose teachers have been trained in Toronto, the pupils can not only sing music at sight, written in the natural scale and in a limited register, but they can write music as dictated or sung, within the limit prescribed for their grade, and can sing individually (as they read individually) what they have written, from their slates. Very much of the success in the lower classes in teaching this subject is due to the able training of Miss Agnes McIntyre of Phœbe Street School. This lady has freely rendered very great service by proving to our primary teachers and the students in our Model School that music can be taught simply and progressively as any other subject can.

The Children's Concert in connection with the Centennial Celebration was the greatest musical event in connection with the history of the schools. A chorus of over six hundred children from the Public and Separate Schools sang under the direction of Mr. E. W. Schuch. The Concert was a most satisfactory one in every respect, and I trust that a similar Concert may in future be one of the annual events in connection with the closing exercises in our schools.

TORONTO TEACHERS' ASSOCIATION.

The First Semi-Annual Meeting of this Association, for 1884, will be held on Friday and Saturday, February 29th, and March 1st, in the S. S. Building of Carlton Street Methodist Church (near Yonge Street).

PROGRAMME.—*Friday, February 29th.*

- 9.00— 9.15...Calling Roll of Teachers.
 9.15— 9.30...Reading Minutes and Communications.
 9.30—10.15...Mental Arithmetic. Mr. J. L. HUGHES.
 10.15—11.00...Teaching Writing to Senior Classes. Mr. J. T. SLATER.
 11.00—11.05...Quartette, "How Fair'the Maiden," by Members of the Association. A
 11.05—11.10...Recess.
 11.10—12.00...How to direct the Private Reading of Scholars. MISS A. FREEMAN.
 2.00— 2.45...Object Lessons. Mr. J. L. HUGHES,
 2.45— 3.45...Teaching of Hygiene. Mr. J. A. WISMER.
 3.45— 3.50...Quartette, "Evening Bells," by Members of the Association.
 3.50— 4.00...Recess.
 4.00— 5.00...Monthly Report to Inspector. Mr. J. BODDY.

SATURDAY, MARCH 1ST.

- 9.00— 9.15...Calling Roll of Teachers.
 9.15—10.00...Proposed change in the manner of conducting the business of the Association. Mr. J. L. HUGHES
 10.00—10.30...Election of Officers.
 10.30—10.40...Treasurer's Report.
 10.40—11.40...Reports of Committees.
 11.40—12.30...General Business.

It was agreed at this meeting that it would be much better for the Association to meet by grades once a year than to hold united Conventions during each half year. The reasons for adopting this course were:

1. When all the teachers of the city are present it is quite impossible for more than a very small percentage of them to take any part in the discussion of the subjects laid before the association. As individual development depends chiefly on individual participation and effort the best results are not attained by meeting in full convention.

2. That all the teachers in each grade could meet in a school to be named by the Executive Committee to witness the regular teaching of the class. It was felt that more benefit would result from this course than from theoretical discussions.

3. By witnessing a practical illustration of the specific work of their own grade the teachers would be able to obtain an insight into the best methods of teaching the subjects which they have to teach themselves.

4. The same methods should not be followed in teaching the same subjects to pupils of different ages, hence it is a decided advantage for teachers to direct their attention not only to the work of their own classes, but to the consideration of the best methods of awakening and training the minds of pupils of the same age as those with which they have to deal.

In accordance with the plan adopted Meetings were held during the month of October as follows :

Meetings	Grade.	Class.	School.	Date.
1st.	1 and 2.	Mr. McAllister's.	Ryerson.	Mon. Oct. 6th, 1884
2d.	4.	Mr. Clark's.	Phoebe St.	Fri. " 10th, "
3d.	6.	Miss Sim's.	Wellesley.	Mon. " 13th, "
4th.	5.	Mr. Cassidy's.	Louisa St.	Tue. " 14th, "
5th.	8.	Mrs. Warburton's	Bathurst St.	Fri. " 17th, "
6th.	7.	Miss Martin's.	Winch'r St.	Mon. " 20th, "
7th.	9.	Miss Niven's.	Bathurst St.	Tue. " 21st, "
8th.	9.	Miss Tomlinson's.	Parlm't St.	Fri. " 24th, "
9th.	3.	Miss Kennedy's.	Dufferin St.	Mon. " 27th, "
10th.	10.	Miss Berney's.	Palace St.	Tue. " 28th, "
11th.	10.	Miss Fortune's.	Phoebe St.	Thur. " 29th, "
12th.	10.	Miss Jones'.	Hope St.	Fri. " 31st, "

The forenoon in each case was spent in observing the work of teaching by the regular teacher of the class. In the afternoon the section organized under the leadership of the Inspector, and proceeded to a critical consideration of the work of the morning. The details of organization, management, discipline, and methods of teaching as practised in the class visited were considered; the teachers present reported their own plans and methods for doing similar work; and resolutions were passed embodying the opinions of the section regarding the various subjects brought before them.

The numbers in attendance being comparatively small, the teachers had very little hesitation in joining freely in the discussions.

It was unanimously agreed that the new plan of meeting in Sectional Conventions by grades was much superior to the ordinary meetings of the Association. More work was done; it was of a more practical kind than could possibly be done at a Convention of the whole Association; and all the teachers took part individually in the work. Another benefit was the opportunity afforded to the teachers of becoming acquainted with those associated with them in teaching corresponding classes. This cannot fail to aid in producing a decided improvement in the professional spirit among the teachers as a class.

On November 1st., the full Association met in the Sunday School Building of the Carlton Street Methodist Church, to receive reports from the various sections. The reports having been read, they were referred to the Executive Committee with instructions to consolidate the suggestions into one report to be presented for consideration at the first meeting in 1885.

Many very valuable recommendations were made which will undoubtedly prove of great service to the teachers, and will be of decided advantage to the schools.

The officers of the Association for 1884, were:

President—Mr. S. McAllister.

Vice-President—Mr. R. W. Doan.

Secretary-Treasurer—Mr. R. McCausland.

MANAGING COMMITTEE.

Mr. W. J. Hendry.

Mr. W. Cassidy.

Mr. N. McEachren, (Col. Instructor.)

Miss E. A. Williams.

Mrs. J. S. Arthurs.

Mr. J. L. HUGHES, Ex-Officio.

PROGRESS OF THE PUBLIC SCHOOLS.

Table E gives a comparative statement of various items relating to the Schools since 1844. It will be seen by reference to it, that the increase in the attendance at our schools has been very rapid.

In 1864	the average registered No. was	3,121,	the daily attendance,	2,400
" 1874	" " " "	5,924,	" "	4,814
" 1884	" " " "	13,281,	" "	11,758

The Average Attendance has thus been considerably more than doubled during the past ten years.

Respectfully submitted,

JAMES HUGHES,

Public School Inspector.

Statistical and Reference Tables.

Jesse Ketchum.....	641	657	666	658	635	713	729	721	705	677
Cottingham.....	114	120	126	128	117	141	135	141	136	127
Rose Avenue.....	195	206	223	219	210	246	268	249	237	225
Holton.....	460	460	448	474	464	439	420	452
Lealie.....	84	68	62	74	73	80	78	74
Mabel.....	128	128	132	133	129	129	119	128
Howard.....	32	32	48	46	46	48	36
Dewson.....	76	76
Total.....	12198	12204	12231	13076	12563	14095	14124	13813	13374	13357

Jesse Ketchum	560	564	581	578	593	590	635	664	657	643
Cotttingham	94	82	103	102	102	100	112	119	126	117
Rose Ave.	167	186	186	191	200	195	222	231	234	217
Polen	343	374	333	387	402	386	368
Louis	55	50	39	60	61	64	69
Mabel	114	117	116	115	116	110	114
Howard	26	29	37	39	40	44
Dewson	70
Total	10889	10875	10987	11562	11589	11359	12326	12686	12471	12208

TABLE C.
Showing the Number of Days Lost through Absence during the Year.

SCHOOLS.	Average Reg's 'td Numbers	JAN.	FEB.	MAR.	APRIL.	MAY.	JUNE.	SEPT.	OCT.	NOV.	DEC.
Dufferin.....	708	1042	1064	1296	1285	1214	1088	1102	1187	1206	1009
Wallerby.....	682	1024	1024	1341	1461	1448	1355	1436	1321	1300	1287
Eyreson.....	621	1217	1025	1321	1470	1482	1399	1462	1498	1373	793
Phoebe Street.....	773	1476	1592	1579	1870	1815	1834	1824	1848	1507	790
John ".....	544	904	925	1026	1123	1014	893	1211	892	937	608
Park.....	528	1080	1022	1090	991	1223	990	1085	1114	917	602
Winchester Street.....	519	742	834	1353	1188	1207	1175	804	1071	917	800
Victoria ".....	555	1380	1142	1099	1213	1530	1224	1215	1252	1170	866
Niagara ".....	520	932	1267	1224	1379	1592	1085	1320	1903	1102	801
Louisa ".....	466	975	988	1056	1362	1220	1041	1253	1188	1270	733
Parliament ".....	425	941	860	798	933	1220	692	955	1043	976	726
George ".....	378	736	1025	916	1146	1040	987	966	831	776	514
Church ".....	565	1103	1339	1104	1170	1137	946	1244	1109	985	961
Elizabeth ".....	409	565	633	619	648	803	630	527	718	638	511
Brant ".....	400	798	801	905	1143	1308	855	861	1052	1159	623
Bathurst ".....	560	1043	1139	1112	1103	1347	995	1521	1283	1033	647
Hope ".....	756	930	1226	1320	1540	1630	1506	1728	1824	1751	1075
Palace ".....	263	649	695	716	772	752	495	503	512	595	358
York ".....	189	487	445	466	525	718	360	526	663	645	375
Borden ".....	371	423	572	803	786	743	683	380	964	816	556
Givins' ".....	550	1241	1056	1208	1018	1138	946	1538	1112	1108	607
Eastern Ave.....	121	286	286	253	195	255	173	187	143	148	159
Boys' Home.....	78	91	95	..	68	107	116	110	143	99	67
Girls' ".....	76	6	..	34	87	44	90	..	30	77	..
Orphans' ".....	115	101	84	66	49	73	15	80	52	76	..

Chestnut Street.....	78	866	336	852	322	412	490	325	396	430	263
Jesse Keichum.....	677	1160	1008	1419	1297	1368	1047	1338	1363	1252	988
Cottingham Street.....	197	569	449	845	419	566	457	580	368	381	330
Rose Ave.....	227	199	373	562	624	381	313	562	525	483	326
Bolton Street.....	452	2353	1754	1126	1700	1222	933	634
Leslie ..	74	290	437	297	263	280	87
Mabel ..	128	292	233	289	418	296	359	75
Howard ..	36	66	56	161	135	109	47
Dewson ..	76	106
Total.....	13357	22997	23902	25576	20726	30553	24615	28820	27637	26205	18681

TABLE D.
Showing the Number of Cases of Lateness during the Year.

SCHOOLS.	Average Number Reg'd	JAN.	FEB.	MAR.	APRIL.	MAY.	JUNE.	SEPT.	OCT.	NOV.	DEC.	TOTAL.
Dufferin.....	703	26	25	28	8	16	9	14	17	22	6	171
Wellesley.....	989	52	23	17	14	8	22	27	17	29	30	289
Ryerson.....	621	36	18	8	15	7	9	16	12	20	19	160
Phoebe Street.....	773	100	56	51	40	38	18	31	18	54	23	429
John.....	544	23	19	24	21	20	11	31	26	33	28	296
Park.....	538	121	86	47	27	6	13	17	10	24	4	355
Winchester Street.....	519	25	20	30	15	27	34	18	20	30	11	290
Victoria.....	555	100	51	48	38	71	41	38	75	120	61	643
Niagara.....	520	51	45	43	31	58	12	91	47	51	23	452
Louisa.....	466	91	49	60	53	50	50	55	29	36	23	496
Parliament.....	425	19	14	9	15	10	13	13	15	16	20	143
George.....	378	34	24	21	35	21	11	31	41	44	33	296
Church.....	565	64	43	38	31	22	17	29	28	19	15	306
Elizabeth.....	409	55	37	37	16	19	16	53	64	58	24	381
Brant.....	400	35	45	23	24	41	15	20	50	59	30	342
Bathurst.....	560	75	81	75	66	46	53	44	50	63	54	607
Hope.....	756	77	83	95	48	35	29	43	53	99	71	633
Palace.....	263	15	3	11	8	7	5	2	6	8	7	72
York.....	189	40	23	46	45	89	29	24	41	57	27	427
Borden.....	371	47	32	23	26	30	16	31	47	63	29	344
Givins.....	550	61	42	43	41	34	22	46	50	64	18	411
Eastern Ave.....	121	80	54	23	20	9	9	12	12	22	6	259
Boys' Home.....	78	9	19	12	12	23	2	14	6	94
Girls' Home.....	76
Orphans' Home.....	115
		2	4	3	4	2	..	4	3	2	..	23

Chestnut Street	78	87	70	90	92	86	54	111	109	130	79	906*
Jesse Ketchum	677	104	63	30	19	26	19	29	28	36	42	396
Cottingham Street	127	7	14	7	8	11	7	6	6	10	4	80
Rose Ave	225	46	32	32	10	44	20	12	21	11	8	236
Bolton Street	452	43	271	139	115	119	96	97	1275†
Leslie	74	59	50	46	31	35	11	214
Mabel	128	55	45	36	26	32	28	8	220
Howard	36	2	2
Dewson	76	21	21
Total	13357	1482	1063	960	1286	1231	787	1058	1060	1343	840	11110

*A special School for neglected children.

†Recently added to the City.

TABLE E.

Comparative Statement of the City Schools, under Specific Headings, from 1844 to 1882, both inclusive.

Year.	City Population.	Average Registered Attendance.	Average Daily Attendance.	No. of Teachers.	Average No. of Pupils to each Teacher.	Total Cost of Maintaining the Schools.		Cost per child per an. on basis of Registered attendance.	Cost per child per an. on basis of Daily attendance.	
						months,	\$			
1844	18500	1194	12	100	4 1/2	5508	\$ 5 00	
1845	19706	1108	12	92	12	7084	7 00	
1846	20565	1212	15	81	12	8044	6 80	
1847	21784	1255	13	97	12	7484	6 00	
1848	23503	1431	13	110	6	3668	5 20	
1849	24226	1325	13	102	6	3668	5 08	
1850	25766	1259	15	91	12	7992	6 30	
1851	30762	1843	1266	16	85	12	9624	\$ 5 80	7 20
1852	35000	1872	1346	16	84	12	10232	5 40	7 40
1853	40000	1886	1402	20	70	12	12860	7 00	9 00
1854	41500	1971	1459	21	69	12	16704	8 50	11 00
1855	42500	2066	1570	31	50	12	20872	10 00	13 00
1856	43250	2318	1747	32	55	12	22568	10 00	12 80
1857	45000	2480	1863	36	52	12	24216	10 00	13 00
1858	47500	2522	1987	36	55	12	26386	9 69	12 80
1859	45000	2742	2150	38	56	12	25312	9 20	11 73
1860	45000	2846	2260	38	59	12	26044	9 16	11 52
1861	44743	2800	2180	39	57	12	25640	9 16	11 75
1862	45000	2825	2183	38	57	12	25054	8 94	11 48
1863	47500	3000	2187	38	60	12	25636	8 54	11 21
1864	47500	3121	2400	39	61	12	26184	8 39	10 91
1865	47500	3348	2251	40	56	12	26448	8 11	11 75
1866	47500	3139	2399	41	58	12	27548	8 52	11 17
1867	47000	3364	2609	41	64	12	26900	7 90	10 31
1868	50000	3657	2810	45	62	12	29 44	7 94	10 33
1869	55000	3906	3132	46	68	12	30460	7 80	9 73
1870	56000	4106	3288	50	64	12	33348	8 02	10 02
1871	57500	4646	3638	52	70	12	35000	7 53	9 62
1872	58000	5100	4070	61	67	12	42500	8 33	10 44
1873	60 00	5536	4453	65	69	12	55500	10 02	12 46
1874	62000	5924	4814	75	85	12	52000	6 31	10 80
1875	64000	6447	5886	90	72	12	58772	6 08	10 91
1876	65000	6912	5976	94	73	12	60456	6 17	10 13
1877	67000	7606	6860	128	59	12	76006	6 90	11 07
1878	68000	7376	7467	140	59	12	83792	7 29	11 23
1879	70000	8910	8144	148	60	12	89713	7 44	11 02
1880	73000	8987	8215	150	60	12	92842	7 45	11 30
1881	92000	9321	8409	162	58	12	98632	7 91	11 75
1882	93000	9874	8802	176	56	12	110872	8 13	12 52
1883	95000	11191	10111	200	56	12	134317	8 77	12 28
1884	96000	13281	11758	227	59	12	147821	8 42	12 57

TABLE F.

List of Teachers, arranged with a view to secure Equitable Promotion, and showing the Division taught by each Teacher; their Certificates; Places of Training; and the dates at which they entered the service of the Board.

NAMES.	CERTIFICATES.	WHERE TRAINED.	ENTERED SERVICE OF BOARD. (Last Time).
HEAD TEACHERS.			
James Anderson	Provincial 2nd B.	Edinburgh, Scotland.	1858
Miss C. M. Churchill	do 1st B.	Prov. Normal School.	do
Martin Gill	County Bd. 1st A.	Dublin Ch. Ed. Society.	1859
Samuel McAllister	Provincial 1st A.	do	do
Miss Olivia Dunn	do do	Prov. Normal School.	1864
Richard Lewis	County Bd. 1st A.	Liverpool, England.	September, 1867
John Campbell	do do	Prov. Normal School.	November, 1868
Miss E. A. Williams	Provincial 1st B.	do	October, 1870
A. F. Macdonald	County Bd. 1st A.	do	May, 1871
Robert W. Doan	Provincial 1st B.	Prov. Normal School.	1872
W. J. Hendry	do 1st C.	do	January, 1873
Andrew Hendry	do do	do	September, 1874
Levi J. Clark	do do	do	November, do
Albert R. Pyne	do do	Prov. Normal School.	1875
Mrs. G. S. Riches	do 2nd A.	do	August, do
Mrs. J. S. Arthurs	do 1st A.	do	September, do
G. K. Powell	do do	do	February, 1876
Adam Morrison	do 2nd A.	do	January, 1877
			do

TABLE F.—CONTINUED.

NAMES	CERTIFICATE.	WHERE TRAINED.	ENTERED SERVICE OF BOARD. (Last Term.)
George Crane.....	Provincial 2nd B.	Prov. Normal School.	January, 1877
R. T. Martin.....	do 2nd B.	" "	do do
Wm. Cassidy.....	do 1st A.	" "	October, 1879
Thomas Parker.....	do 2nd A.	" "	September, 1881
James Boddy.....	do 2nd B.	" "	do do
Joseph Watson.....	do do	Prov. Normal School.	do do
Miss E. Gillin.....	do 1st C.	" "	January, 1882
J. T. Slater.....	do do	" "	September, 1883
J. E. Armstrong.....	do 2nd A.	" "	do do
Chas. S. McMain.....	do 2nd B.	Prov. Normal School.	do do
Harold Clark.....	do 1st C.	" "	January, 1884
Alex. Muir.....	County Bd. 1st A.	" "	May, do
ASSISTANT MASTERS			
John Phillips.....	County Bd. 1st C.	" "	June, 1868
E. A. Stevens.....	Provincial do	Prov. Normal School.	March, 1883
A. McMillan.....	do 1st A.	" "	November, 1884
E. Byfield.....	do 1st C.	Prov. Normal School.	do do

TABLE F. (CONTINUED.)
FEMALE ASSISTANT TEACHERS.

NAMES.	DIVISION.	CERTIFICATES.	WHERE TRAINED.	EXTENDED SERVICE. OF BOARD. (Last Time.)
Miss M. J. Keown	Senior 5th Bk.	County Bd. 1st A.	Prov. Normal School.	April, 1862
" Margaret Bulk	"	Provincial 1st A.	" " "	May, 1865
" Susan Hamilton	Junior 5th Bk.	County Bd. 1st C.	" " "	April, 1858
" Charlotte Spotton	"	Provincial 1st B.	" " "	do 1866
" Mary A. Worth	"	do 1st A.	" " "	September, 1870
" Elizabeth Kennedy	Senior 4th Bk.	do	" " "	November, 1855
" Rebecca Thompson	"	2nd A.	" " "	October, 1859
" Jesse Ruge	"	1st B.	" " "	October, 1865
" S. M. Hamilton	"	do	" " "	January, 1865
Mrs. E. A. Stevenson	"	1st C.	" " "	do 1868
Miss I. A. Cruise	"	do	" " "	September, 1869
" A. Killoch	"	do	" " "	do 1870
" S. McCraith	"	do	" " "	April, 1872
" C. Sykes	"	1st A.	" " "	April, do
" " "	"	2nd B.	" " "	August, 1876

TABLE F. (CONTINUED.)
FEMALE ASSISTANT TEACHERS.

NAMES.	DIVISION.	CERTIFICATES.	WHERE TRAINED.	EXTENDED SERVICE OF B. S. (Last Time).
Mrs. Annie Carey	Junior 4th Bk.	Provincial 2nd A. County Bd. 1st C.	Prov. Normal School.	September, 1870
Miss Jessie Campbell	"	Provincial do	"	October, do
Mrs. Lilly Leadly	"	do 1st B.	Prov. Normal School.	February, 1871
Miss Emma Kennedy	"	do 1st C.	"	March, 1872
" Maria Woods	"	do do	"	April, do
" Annie I. Cameron	"	do 1st A.	"	January, 1873
" Louise Bailey	"	do 2nd B.	"	August, 1875
" Annie L. Armstrong	Senior 3rd Bk.	do 2nd A.	"	January, 1863
" Kate A. Scarlett	"	do 2nd B.	"	January, 1863
Mrs. E. A. Green	"	do 1st A.	"	do do
Miss Jane Smyth	"	do 1st C.	Prov. Normal School.	March, 1873
" Mary Gunn	"	County Bd. 1st A.	"	do do
Mrs. M. A. McDonald	"	Provincial 1st B.	"	do do
Miss Isabella Mearns	"	County Bd. 1st C.	Prov. Normal School.	September, 1875
Mrs. J. N. Agnew	"	Provincial 1st B.	"	August, do
" J. S. Balmer	"	do 1st	"	September, do
Miss J. Gunn	"	do 1st	"	October, do
Mrs. C. Breckon	"	do 1st B.	"	April, 1876
Miss A. A. Gray	"	do 1st C.	"	October, do
" L. Cornor	"	do 1st A.	"	January, 1877
Mrs. E. A. Miller	"	do 2nd B.	"	do do
				do do
				1878
				1879

" Susan McKenzie.....	Junior 3rd Bk.	Provincial 2nd A.	Prov. Normal School.	April, 1872
" Amelia Sims.....	"	do	"	February, 1873
" Margaret Hunter.....	"	do	"	do
Mrs. M. A. Gregg.....	"	2nd B.	"	April, do
" J. A. McBrien.....	"	do	"	August, do
Miss Hoesie How.....	"	2nd B.	"	September, 1874
" Mary A. Westman.....	"	do	"	February, 1875
" Thomasina Carlyle.....	"	do	"	August, do
" Louise Lumsden.....	"	2nd B.	"	do
" Minnie Smith.....	"	do	"	do
Mrs. Emma Lilly.....	"	2nd A.	"	September, do
Miss Alice Freeman.....	"	do	"	do
" Carrie J. Watson.....	"	2nd B.	"	do
" Martha Sefton.....	"	do	"	October, do
" Kate M. Allen.....	"	do	"	do
" Charlotte F. Jackson.....	"	2nd A.	"	January, 1876
Mrs. McCuaig.....	"	do	"	October, do
Miss L. Keswick.....	"	2nd B.	"	do
" E. Y. Stans.....	"	do	"	January, 1877
" Florence Thompson.....	"	do	"	do
" Nellie Hodgson.....	"	do	"	do
"	"	do	"	do
"	"	do	"	August, 1878
<hr/>				
" Eliza M. Chadwick.....	Senior 2nd Bk.	do	"	January, do
" Elizabeth Foulds.....	"	do	"	do
" E. R. Gray.....	"	do	"	do
" L. Gallatly.....	"	do	"	do
" Sarah Hagartry.....	"	do	"	do
" L. Payne.....	"	do	"	do
" A. M. Sefton.....	"	do	"	do
" S. L. Taylor.....	"	2nd B.	"	do
" Lois Slater.....	"	do	"	do
"	"	County Hd. 1st C.	"	February, do

TABLE F. (CONTINUED.)
FEMALE ASSISTANT TEACHERS.

NAMES.	DIVISION.	CERTIFICATES.	WHERE TRAINED.	ENTERED SERVICE OF BOARD.	
				()
Mrs. M. Steward.....	Senior 2nd Bk.	Provincial 2nd A.	Prov. Normal School.	February,	1877
Miss M. Spence.....	"	do do	"	September,	do
" Agnes McIntyre.....	"	do do	"	do	do
" F. Martin.....	"	do do	"	do	do
" M. Milne.....	"	do do	"	do	do
" E. C. Starrcock.....	"	do do	"	do	do
" May F. Spence.....	"	do do	"	do	do
" F. Sims.....	"	do do	"	do	do
" I. B. Brown.....	"	do do	"	do	do
" M. J. McCally.....	"	do do	"	do	do
" M. Mullen.....	"	do do	"	do	do
" I. Nudel.....	"	do do	"	do	do
Mrs. J. E. Bell.....	"	do do	"	do	do
Miss Amy Sanderson.....	"	do do	"	do	do
Miss J. Carlyle.....	Junior 2nd Bk.	do do	"	September,	1878
" L. Dickinson.....	"	do do	"	do	do
" A. T. Waterson.....	"	do do	"	do	do
" J. Anderson.....	"	do do	"	do	do
" S. E. A. Scobie.....	"	do do	"	do	do
Mrs. L. Wynd.....	"	do do	"	do	do
Miss J. F. Brown.....	"	do do	"	do	do
" H. Clarkson.....	"	do do	"	do	do
" Jessie Mark.....	"	do do	"	do	do
		County Bd. 1st B.		July,	do
		Provincial 2nd B.	Prov. Normal School.	do	do

	Junior 2nd Bk.	Provincial 2nd B.	Prov. Normal School.	September, 1879
Miss A. S. Martin	do	do	"	do
" M. Smyth	"	do	"	do
" P. Black	"	do	"	October,
" F. McKee	"	do	"	do
" A. McKee	"	do	"	do
Mrs. Greer	"	do	"	December,
" L. Coad	"	do	"	do
Miss Carrie Cathcart	"	do	"	September, 1880
" E. N. Harney	"	do	"	do
Mrs. A. Thorold	"	do	"	December,
" G. C. Warburton	"	do	"	do
Miss A. V. Beattie	"	do	"	September, 1881
" Mand Featherstonhaugh	"	do	"	do
" Helen J. Lanskaal	"	do	"	do
" Jessie Semple	"	do	"	do
" M. Emery	"	do	"	January, 1882
	Senior 1st Bk.	2nd A.		September, 1881
" Ellen Dew	do	do	"	do
" H. B. Laidlaw	do	do	"	do
" Amy Fell	do	do	"	October,
" Jennie Milne	do	do	"	January, 1882
Mrs. Grace S. Monahan	do	1st A.	"	do
Miss Kate A. Hardy	do	2nd B.	"	do
" Lizzie McCreight	do	do	"	do
" S. Tomlinson	do	do	"	do
" Jessie Niven	do	do	"	do
" Rachel E. Purdie	do	do	"	do
Mrs. M. K. McGregor	do	1st A.	"	September,
Miss H. Johnston	do	1st C.	"	do
Mrs. J. Muir	do	do	"	do
Miss R. Church	do	2nd A.	"	do
" G. Langlois	do	do	"	do

TABLE F. (CONTINUED.)
FEMALE ASSISTANT TEACHERS.

NAMES.	DIVISION.	CERTIFICATES.	WHERE TRAINED.	ENTERED SERVICE OR BOARDING (Last Time).
Miss M. Sanders	Senior 1st Bk.	Provincial 2nd A.	Prov. Normal School.	September, 1883
" M. Shivers	"	do	"	do
" M. E. Clarendon	"	do	"	do
" M. B. Shier	"	2nd B.	"	do
" J. M. Wallace	"	do	"	do
" M. White	"	do	"	do
" L. F. McKim	"	do	"	do
" Emily Langton	"	2nd A.	"	do
" M. August	"	do	"	do
" E. Clarke	"	1st B.	"	October,
" Sarah Smith	"	do	"	November,
" E. Clarke	"	2nd B.	"	do
" Sarah Smith	"	do	"	do
" M. Tomlinson	"	do	"	do
" E. McAdam	"	2nd A.	"	do
" A. M. Cullen	"	2nd B.	"	January, 1883
" E. Sims	"	do	"	do
" H. Fraser	"	do	"	do
" A. Coupland	"	do	"	do
" J. Eadie	"	1st B.	"	do
" Nellie Woolley	"	2nd B.	"	do
" Nellie Woolley	"	2nd B.	"	January, 1884
" M. D. Young	Junior 1st Bk.	do	"	September
" Maggie Young	"	do	"	do
" E. Barney	"	do	"	do

TABLE F. (CONTINUED.)
FEMALE ASSISTANT TEACHERS.

NAMES.	DIVISION.	CERTIFICATES.	WHERE TRAINED.	ENTERED SERVICE OF BOARD. (Last Term.)
Miss C. Gray	Junior 1st Bk.	Provincial 2nd B.	Prov. Normal School.	September, 1884
" M. Martin	"	do	"	do
" A. Myers	"	do	"	do
" C. M. Holterman	"	do	"	do
" L. Young	"	do	"	do
" L. McFeal	"	do	"	do
" C. Eadie	"	do	"	do
" M. Sheppard	"	do	"	do
" J. Gray	"	do	"	do
" B. Dutton	"	2nd A.	"	December, "
" L. Tector	"	3rd.	"	January, 1884
" Annie Eadie	"	3rd.	"	do

Examiners' Report.

1870

REPORT OF EXAMINERS.

The Examiners have the honor to report that on the 17th and 18th of June they examined the pupils selected from the four highest divisions of the City Public Schools, numbering in all 280, being 18 in excess of the number sent up last year. The Examinations were conducted in the Ryerson and Dufferin Schools, and were throughout in writing, with of course the single exception of reading. The following is submitted as the result of a careful scrutiny and comparison of the papers handed in.

I. FOURTH DIVISION.

The pupils of this, the lowest Division, taking part in the Combined Examinations numbered 70. They were taken from the Fourth Divisions of the Dufferin, Wellesley and Ryerson Schools; five boys and five girls from each, and five pupils each from John St., Winchester St., Victoria St., Church St., Hope St., Phœbe St., Jesse Ketchum and Park Schools. They were examined in the following subjects:—Reading, Spelling and Derivations, Writing, Arithmetic, History, Geography, Hygiene and Music. Including all the subjects of examination, the boys department in the Wellesley School takes the first place; the boys of the Ryerson School, second; the girls of Wellesley School, third, and the pupils of Victoria Street School, fourth. In all the Divisions the highest prizes are given for general proficiency, and the recipients of these prizes are not permitted to take prizes, also for proficiency in the separate branches of study. The Examiners recommend that prizes for General Proficiency in this Division be presented to the following:

1. Minnie Newcombe, John Street School.
2. Thomas Kelly, Victoria " "
3. Joseph Meek, Ryerson " "
4. Emily Whiton, Wellesley " "
5. May Allison, Ryerson " "

Taking the subjects in separate groups, the Examiners find that in this Division the highest excellence in Arithmetic was shown by the pupils of Hope Street School followed very closely by the girls of the Wellesley School, the boys of Wellesley taking third place. In Grammar and Hygiene the pupils of Victoria Street School stand first, those of Phoebe Street, second, the girls of Wellesley School, third, and the boys of the same School, fourth. In History and Geography the boys of Wellesley stand first, the girls of Dufferin, second, and the girls of Wellesley third. In Reading, Spelling and Derivations the pupils of Victoria Street School took first place, the girls of Dufferin, second, and the boys of Wellesley third. In Writing and Music the Dufferin girls come first, the Wellesley girls, second, followed by the pupils of Phoebe Street and Victoria Street Schools.

The Examiners recommend that prizes for proficiency in the subjects specified be given to the following :

ARITHMETIC.

1st Prize.	Inez McPherson, Wellesley School
2nd "	Augustus Middleton, Ryerson School.
3rd "	Isidore McFarlane, Phoebe St. "
4th "	{ James Galloway, Ryerson " George Hunter, Hope St. "

GRAMMAR AND HYGIENE.

1st Prize.	William Eager, Phoebe Street School.
2nd "	Frank Cameron, Wellesley "
3rd "	Bertha Callaghan, Dufferin "
4th "	Emma Schilling, Ryerson "

HISTORY AND GEOGRAPHY.

1st Prize.	Ernest Langley, Wellesley School.
2nd "	Harry Wenborne, " "
3rd "	Oscar Wenborne, " "
4th "	Frank Wright, Ryerson "

READING, SPELLING AND DERIVATIONS.

1st Prize.	Bertha Callaghan, Dufferin School.
2nd "	Robert Conn, Phœbe St. "
3rd "	{ Frank Verrall, John St. "
	{ Alma James, Winchester St. "

WRITING AND MUSIC.

1st Prize.	Ellen Everett, Hope St. School.
2nd "	Louisa Barnes, Dufferin "
3rd "	Lillian Harvie, " "
4th "	{ Inez McPherson, Wellesley. "
	{ Alfred Rolls, Ryerson "

II. THIRD DIVISION.

Eighty pupils presented themselves for examination in this Division, ten boys and ten girls each from Dufferin, Wellesley and Ryerson Schools, and ten pupils each from John Street and Jesse Ketchum Schools. They were examined in the same subjects as the Fourth Division, with the addition of Algebra and Book-keeping. In this Division, taking all the subjects together, the girls of the Wellesley School were highest, John Street pupils next, and the boys of Ryerson third, followed closely by the boys of Wellesley. In Mathematics the first place was taken by the girls of Wellesley School, the second by the boys of Dufferin, and the third by the girls of Ryerson. In Grammar, Composition and Hygiene the Wellesley girls come first, the Dufferin boys second, the boys of John Street third, and the boys of Ryerson fourth. In History and Geography the girls of Wellesley take the lead, followed by John Street pupils, and Ryerson boys third. In Reading, Spelling and Derivations the girls of Wellesley again come first, followed in order by the pupils of John Street School and the girls of Dufferin. In the group, comprising Writing, Book-keeping and Music, John Street pupils come to the front, while the second and third positions are taken respectively by the girls of Wellesley and the girls of Ryerson.

The Examiners recommend prizes to be presented in this Division as follows :

GENERAL PROFICIENCY.

1st Prize.	Beatrice Grant, John Street School.
2nd "	Elvina Saunders, Wellesley "
3rd "	Theresa Palmer, " "
4th "	Lottie Martin, John Street "
5th "	Ella Ronan, Wellesley "

MATHEMATICS.

1st Prize.	J. Phillips, Dufferin School.
2nd "	Amanda Ferguson, Wellesley School.
3rd "	Robert Glover, Ryerson "
4th "	Edmund O'Dell, " "
	(J. Dudley, Dufferin " "

GRAMMAR, COMPOSITION AND HYGIENE.

1st Prize.	Ethel Dyke, Ryerson School.
2nd "	Agnes Cameron, Wellesley School.
3rd "	Helen Hughes, " "
4th "	J. Mahaffy, Dufferin " "

HISTORY AND GEOGRAPHY.

1st Prize.	A. Cameron, Wellesley School.
2nd "	Helen Hughes, " "
3rd "	E. McHolm, " "
4th "	Maggie McKinlay, " "

READING, SPELLING AND DERIVATIONS.

1st Prize.	Maggie McKinlay, Wellesley School.
2nd "	Ernest Hathaway, Ryerson "
3rd "	Lena Barton, Wellesley "
4th "	Bella Hilliar, John Street "

WRITING AND MUSIC.

1st Prize,	Robert Glover, Ryerson School.
2nd "	Bella Hilliar, John Street "
3rd "	Ethel Dyke, Ryerson "
4th "	{ Ellen Rose, " "
	{ Jane Burchall, John Street "

III. SECOND DIVISION.

Seventy pupils of this Division took part in the examination, Dufferin, Wellesley and Ryerson sending ten boys and ten girls each, and Jesse Ketchum School ten pupils. Euclid's Elements formed a subject of examination in addition to the branches embraced in the examination of the Third Division. The girls of the Wellesley School received the highest aggregate number of marks, the boys of Dufferin taking second place, and the girls of the same School third. In the separate branches the first place in Mathematics was allotted to the girls of Wellesley, second to the boys of Dufferin, and third to the pupils of Jesse Ketchum School. In Grammar, Composition and Hygiene the girls department of the Wellesley School takes the first place, the boys of Dufferin second, and the girls of the same School third. In History and Geography the foremost position was taken by the girls of the Wellesley, second by the boys of the Ryerson, and third by the boys of Dufferin. In Reading, Spelling and Derivations the Wellesley girls again take the lead, followed by the boys of the Dufferin and the girls of the Ryerson. In Writing, Book-keeping and Music once more the Wellesley girls head the list, the boys of Dufferin taking second place, and the girls of the same School third place.

The Examiners recommend that prizes be given to the following pupils in this Division.

GENERAL PROFICIENCY.

1st Prize.	Sophia Cooper, Wellesley School.
2nd "	Etta Jackes, " "
3rd "	Lottie Klinch, " "
4th "	Alice Wilson, Dufferin "
5th "	Mina Hamilton, Wellesley "

MATHEMATICS.

- 1st Prize. Henry Broom, Ryerson School.
 2nd " Annie Hook, " "
 3rd " Gertie Murphy, Wellesley "
 4th " Douglas Airth, " "

GRAMMAR, COMPOSITION AND HYGIENE.

- 1st Prize. Gertie Murphy, Wellesley School.
 2nd " Clara Kleiser, Dufferin "
 3rd " Alice Bray, Wellesley "
 4th " Katie Westman, " "

HISTORY AND GEOGRAPHY.

- 1st Prize. George Locke, Ryerson School,
 2nd " Clara Kluzer, Dufferin
 3rd " Jessie Allen, Wellesley "
 4th " Alice Bray, " "

READING, SPELLING AND DERIVATIONS.

- 1st Prize. Alice Bray, Wellesley School.
 2nd " Jessie Allen, " "
 3rd " Kate Westman, " "
 4th " Marian Tomlinson, Dufferin School.

WRITING, BOOK-KEEPING AND MUSIC.

- 1st Prize. Carrie Stevenson, Dufferin School.
 2nd " Jessie Allen, Wellesley "
 3rd " Marian Tomlinson, Dufferin "
 4th " Clara Kleiser, " "

IV. FIRST DIVISION,

In this Division ten pupils appeared for examination from each department of the Dufferin, Wellesley and Ryerson Schools, making a total of 60. The subjects were the same as in the

Second Division. The high standard of excellence attained indicates careful and judicious instruction by the teachers and no small amount of persevering industry on the part of the Scholars.

The highest aggregate marking including the entire range of subjects is taken this year by the Girls of the Wellesley School, next in order, come the Girls of the Ryerson, and third, the Boys of Wellesley School. The contest was very keen, and all did remarkably well.

Reviewing the separate branches of study the papers show the girls of the Wellesley School to stand first in Mathematics, the boys of the same School second, and the girls of the Ryerson School third. In Grammar, Composition and Hygiene the first place is taken by Wellesley girls, the second by the girls of Ryerson, and the third and fourth by the girls of Dufferin and the boys of Wellesley Schools. In History and Geography the Wellesley girls are again first, the Wellesley boys second, and the Dufferin girls third. The girls' department of Wellesley School takes first place in Reading, Spelling and Derivations, the girls of Ryerson coming second, and the girls of Dufferin third. In Writing, Book-keeping and Music the girls of Ryerson School stand first, the boys of Wellesley second, and the girls of Wellesley third.

A special examination in Canadian History and Geography for the purpose of awarding the medals kindly offered by Messrs. Kent Brothers for superior attainments in these subjects took place in the Wellesley School on June 23rd. Thirty-three pupils from the First Division of the Ryerson, Dufferin and Wellesley Schools took part in the contest. A careful examination of the papers handed in showed that Mabel Tennant of the Wellesley School had the highest number of marks, Ernest Rugg of the same School taking the second place.

A special examination was also held in Reading with a view of awarding the prizes offered by the Rev. Septimus Jones for the best Reading by pupils selected by the Teachers. Seventeen candidates presented themselves, eight Boys and nine Girls.

After a very careful and protracted examination, the first place was adjudged to Katie Stewart of the First Division, Wellesley School, the second, to Abbie Ecclestone of the same Division, and Nellie Bain of the corresponding Division in the Dufferin School, these two last being equal.

The medals presented by Mr. John McDonald to the two pupils taking the highest standing in this Division have been won by Annie Stalker and Louisa Devlyn of the Wellesley School. The contest was so close between these two girls that in an aggregate of 1551 marks the difference was only five.

The Examiners recommend that scholarships and prizes be presented to the following.

SCHOLARSHIPS. (GIRLS).

1. Annie Stalker, Wellesley School.
2. Louisa Devlyn, " "
3. Abbie Ecclestone, " "
4. Mabel Tennant, " "
5. Laura Sturrock, " "
6. Emma Smith, Ryerson "

SCHOLARSHIPS. (BOYS).

1. J. A. McDonald, Wellesley School.
2. Arthur Anderson, " "
3. S. G. Beckett, Ryerson "
4. James McCuaig, Wellesley "
5. Alex. McAllister, " "
6. John Robertson, " "

PRIZES. MATHEMATICS.

- 1st Prize. May Sanderson, Ryerson School.
- 2nd " Agnes Mullen, " "
- 3rd " Janet Telfer, Wellesley "
- 4th " Emily Brasier, Ryerson "

GRAMMAR, COMPOSITION AND HYGIENE.

- 1st Prize. Agnes Mullen, Ryerson School.
 2nd " Alice Turner, " "
 3rd " { Emily Brasier, " "
 { Katie Chamberlain Wellesley School.

HISTORY AND GEOGRAPHY.

- 1st Prize. Katie Stewart, Wellesley School.
 2nd " Florence Mills, " "
 3rd " { Annie Short, Ryerson " "
 { Janet Telfer, Wellesley " "

READING, SPELLING AND DERIVATIONS.

- 1st Prize. Katie Stewart, Wellesley School.
 2nd " Alice Turner, Ryerson " "
 3rd " Annie Duff, Wellesley " "
 4th " Helen Sheppard, Dufferin " "

WRITING, BOOK-KEEPING AND MUSIC.

- 1st Prize. Katie Stewart, Wellesley School.
 2nd " Edward Hackborn, " "
 3rd " Alice Turner, Ryerson " "
 4th " Emily Brasier, " "

SPECIAL PRIZE.

Frank Russell of the Wellesley School is entitled to the First Boys' Scholarship, but as he is about to remove from the city he will be unable to avail himself of its advantage, and will receive a special prize instead.

Agnes Mullen of the Ryerson School received a sufficient number of marks to entitle her to the fourth Scholarship, but was ruled out as ineligible on account of having competed for a Scholarship on two former occasions, there being a regulation in force prohibiting pupils from competing oftener than twice.

The Examiners desire in conclusion to express their high appreciation of the thorough training afforded by the City Public Schools in the subjects comprised in the Public School programme. This must be attributed chiefly to the high state of efficiency of the teaching staff, combined with the acknowledged ability and energy of the Inspector.

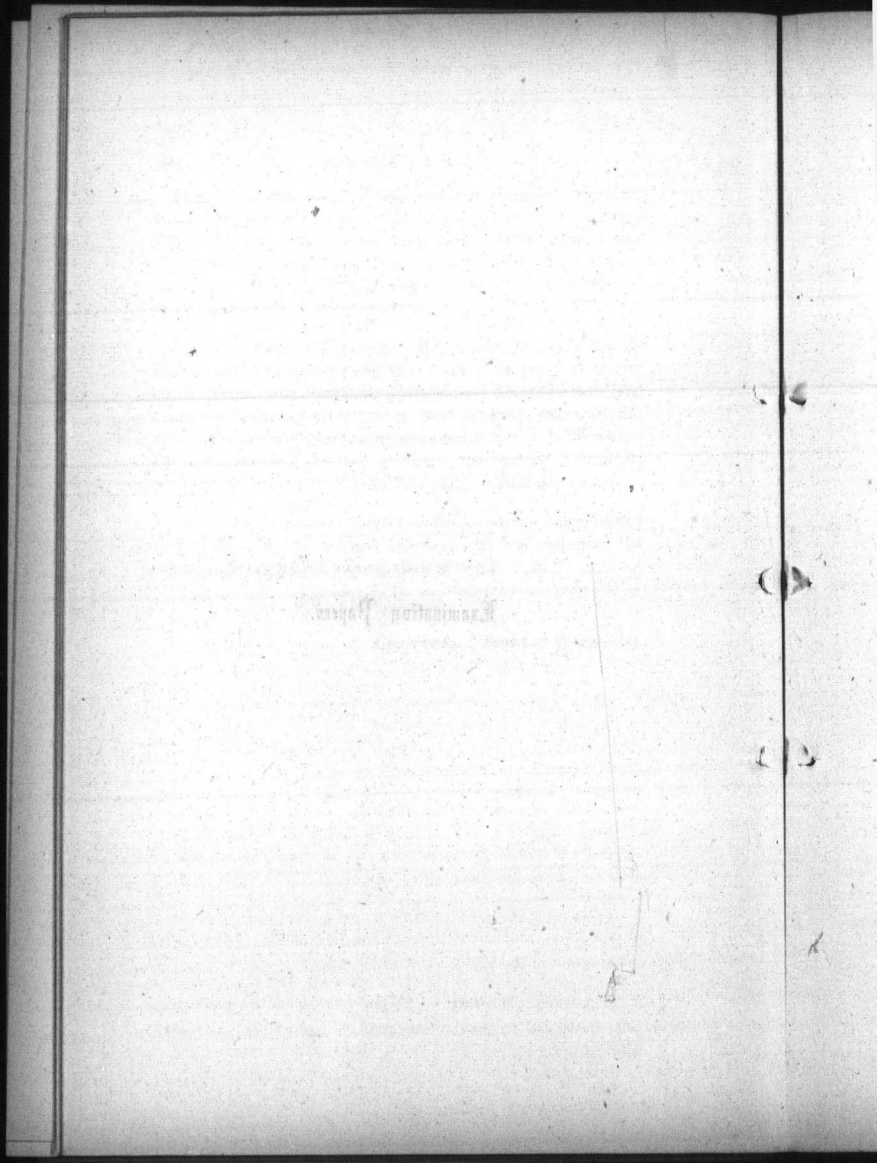
They also desire to suggest to parents and others who take an interest in the Public Schools, that while it is but just to give honor to those who deserve it, there is great danger of attaching undue importance to the results of the Combined Examinations, when estimating the diligence, success, and ability of the Teachers. For it is quite clear that the pupils of the different Schools do not stand on an equality in regard to age and local advantages.

During the examination much valuable assistance was rendered by the Inspector, and by those Teachers who had charge of the pupils while engaged in writing their answers.

WM. ANDERSON,

Chairman of Board of Examiners.

Examination Papers.



EXAMINATION PAPERS.

COMBINED EXAMINATION.

ARITHMETIC.

FIRST DIVISION.

(The work must be shown).

1. What capital, put out at $3\frac{1}{2}$ per cent. per annum, simple interest, would produce \$14 interest in $4\frac{3}{4}$ years?

2. The amount of sunshine recorded in Jersey last year in the month of April was 88 per cent. of the greatest possible amount; and the average length of the night in that Island in that month is 10 hours 30 minutes. Find how many hours of sunshine there were in the month.

3. Find the difference between the amount of \$1,205, put out for two years at 5 per cent. compound interest, and the present value of the same sum in two years' time at the same rate of interest. (Compound interest).

4. Find the cost, at \$20 per 100 sq. ft., of laying in cement the ground floor of a room, which measures 21 ft. by 18 ft., allowing for four fire-places, each 3 ft. by $2\frac{1}{2}$ ft., and for the well-hole of the stair-case a space 9 ft. square.

5. If the interest on a loan for 5 months, at the rate of $3\frac{3}{4}$ per cent. per annum, be equal to the square root of \$.167281, what is the amount of the loan?

6. A speculator investing in $3\frac{1}{4}$ per cents. obtains 4 per cent. for his money, after paying brokerage of $\frac{1}{2}$ per cent. At what rate does he buy in?

7. Supposing a tree, including branches, stem, and leaves, to be exactly equal to a cylinder, whose height is the height of the tree, and whose diameter is the diameter of the lowest part of the trunk, find the number of leaves on a tree 68 ft. high and 2 ft. in diameter at the base, having given that the trunk and branches make up $\frac{1}{10}$ of the cylinder, and that each leaf contains $\frac{1}{10}$ of a cubic inch of material.

8. A train is just 27 minutes in passing through the Mont Cenis tunnel, the length of which is eleven thousand two hundred and twenty metres; find the speed of the train in miles per hour. (Metre—39.39 inches).

9. (a) Explain the difference between proper and improper fractions.

(b) Show how the value of the these fractions is affected (1) by adding the same number to both numerator and denominator; (2) by subtracting the same number from both numerator and denominator.

10. Simplify 0.6 of $3.8 + \frac{1.75}{2.625}$ of $17 + 0.4$ of 5.75

$$\frac{1.714285}{2.095288}$$

ALGEBRA.

FIRST DIVISION.

(All the work must be shown).

1. Find the co-efficient of x^9 in the product of $x^3 - bx^2 - 8abx + a^2$, and $2x^2 - 3ax - a^2$.
2. Divide $x^4 + (2b^2 - a^2)x^2 + b^4$ by $x^2 + ax + b^2$.
3. Find H. C. F. of $7x^2 - 12x + 5$, and $2x^3 + x^2 - 8x + 5$.

4. Simplify (a) $\frac{a^2 + b^2 - c^2 + 2ab}{a^2 - b^2 - c^2 + 2bc}$

(b) $\frac{a}{a+b} + \frac{b}{a-b} - \frac{a^2 + b^2}{a^2 - b^2}$

5. Find the value of x in
 $\frac{1}{12}(2x-3) - \frac{1}{3}(3x-2) + 3\frac{5}{4} - \frac{1}{2}(4x-3) = 0.$

6. Divide 91 into two such parts that the quotient of the greater part, divided by the difference between the parts, may be 7.

GEOMETRY.

First Division will take 1, 2, 4, 5.

Second Division 1, 2, 3, 4.

1. What is meant by rectilineal figures?
2. Define a scalene triangle, a rhombus, an axiom, and a theorem.
3. Any two sides of a triangle are together greater than the third side.
4. Equal triangles on the same base and on the same side of it, are between the same parallels.
5. If a straight line be divided into two equal, and also into two unequal parts, the squares on the two unequal parts are together double of the square on half the line, and of the square on the line between the points of section.

ENGLISH GRAMMAR AND COMPOSITION.

FIRST DIVISION.

1. Name and illustrate each kind of subordinate sentence.

2. When must the pronoun *that* be used instead of *who* or *which*?

3. Explain the terms weak verb, emphatic form, verbal noun.

4. Give four of the principal combinations or relations of the parts of speech.

5. Analyze—

O fresh young year, to us be kind!
 What secrets do you hold in store?
 What pain or pleasure shall we find,
 That we have never found before?

6. Parse the italicized words in the following extract :

This is the *state* of man, *to-day* he puts forth
 The tender *leaves* of hope, to-morrow *blossoms*,
 And *bears* his blushing honors *thick* upon him.
 The third day *comes* a frost—a killing frost,
 And when he thinks, good *easy man*, full surely,
 His greatness is a ripening *nips* his root,
 And then he falls as I do.

7. Write, in the third person, the following speech of King Richard, taking care to make the meaning plain, and commencing with "King Richard said that"

I wish I may forget my brother John's injuries as soon as he will forget my pardon of them.

8. Correct whatever is faulty in the following sentences :

Of all other qualities of style, clearness is the most important.—*Dr. Johnson*.

Before six month's interest were due the debt was fully liquidated.

I wanted very much to have met him in the park.

Those two no matter who spoke or whom was addressed looked at each other.—*Dickens*.

No one but the doctor, the lady trustee, and the parents know the particulars of the dark transaction.

COMPOSITION.

Write—not more than twelve lines—on one of the following subjects :

Knowledge is power.

Order is heaven's first law.

Toronto's Semi-Centennial.

DICTATION AND DERIVATION.

FIRST DIVISION.

1. Write a passage, to be dictated in the class-room.
2. Give the derivation of the following words, with the meaning of their roots, and also of the prefixes and affixes :

Depredations,	Unapproachable,
Expunged,	Invisible,
Predestinated,	Impediment,
Reminiscences,	Philosophy,
Indissolubly.	Unquestionably.

3. Give English words from Senex and Cado.

HISTORY.

FIRST DIVISION.

1. Trace the line of royal descent from William I. to Victoria.
2. Name the Tudor Sovereigns, and show how each was related to his predecessor. Give dates.
3. Name the rulers of the Stuart Period, main events, chief men, and leading authors and their principal works in each reign.
4. Trace the progress of constitutional freedom during the Stuart Period.
5. Compare the social condition of England at the beginning and at the end of the Stuart Period.
6. Write full notes on Puritans, Titus Oates, Laud.
7. Mention in the order of time the English rulers, from Henry III to Elizabeth, who did most to promote the true welfare of the English nation, and state what was done by each. [Or, instead of the foregoing, write notes on Monmouth, Blake, Marlborough, Test Act, Petition of Right.]
8. Sketch the History of the struggle for responsible government in Canada.
9. Give a brief account of the principal wars from 1689 to 1754.
10. Compare the official power of the Queen of England with that of the President of the United States. How and for what period is the latter elected.

GEOGRAPHY.

FIRST DIVISION

	Val.
1. Mention all the countries included in the British Empire.....	10
2. Define Isothermal lines, the Ecliptic, the Zodiac, the Zenith, and Equinoxes.....	10
3. What are the principal industries of Canada?.....	10
4. Where are the following cities situated, and what are they noted for? Geneva, Naples, Sebastopol, Hamburg, Marseilles, Manchester, Belfast and Glasgow.....	10
5. Draw an outline map of the British Isles.....	80
6. Give a map, complete as possible, of Ontario Province, west of the Counties of York and Simcoe.....	80

BOOKKEEPING.

FIRST DIVISION.

1. Into how many classes are accounts divided?
2. Name some of each class.
3. How often is it usual to close the Ledger.

4. In closing the Ledger, on which side of the Merchandise Account is the Inventory placed ?

5. What is meant by a Trial Balance ?

6. Write out a note, dated June 10th, 1884, in favor of W. C. Anderson, payable at his office, Toronto, three months after date, for five hundred dollars, bearing interest at seven per cent. per annum.

HYGIENE.

FIRST DIVISION.

	Val.
1. Name the various parts of the eye-ball.....	5
2. Give the three main divisions in the construction of the ear. How is sound produced?	5
3. Describe the organs and the process through which food passes before it serves to build up the human system ...	5
4. Describe the heart. What are the uses of arteries and veins?	5
5. What natural provision is made for purifying the blood. Name some of the causes that produce impurities in the blood.....	5
6. Which is the purer atmosphere—the atmosphere of a large city or of an elevated country-place? What are the causes of the difference?.....	5

MUSIC.

ALL DIVISIONS.



1. Explain the signs and numbers at the beginning and end of this strain, the dots under the notes, the dot after a note, the second character in the second measure, the bar joining the tails of the next two notes, the mark over the last note, the p. and f. before the second note in the last measure, and the mark over it, the mark over the last note in the measure.

2. What do you mean by the key-note? How do you determine what is the key of a piece of music? What is the key-note of the strain printed above? Major or minor? How do you know?

3. Name, in order, the letters and syllables by which you would designate the above notes.

4. Name the intervals between the notes of the first two measures.

5. Explain *Andante*, *Largo*, *Presto*.

* 6. Transpose the above strain, setting it a major third higher.

* 7. Explain $\begin{array}{c} \text{C} \text{---} \text{B} \text{---} \text{A} \\ \text{---} \text{---} \text{---} \\ \text{---} \text{---} \text{---} \\ \text{---} \text{---} \text{---} \end{array}$ How do you beat these kinds of time? Where does the accent fall in each kind?

8. Write on a staff the air of the first strain of "God Save the Queen," or of "Sun of My Soul," in the key of B^b major.

* 9. What is meant by a modulation? Is there any modulation in the strain printed above? and, if so, what is the modulation?

* 10. Write on a staff the common chord in the keys of B, D, A^b and A natural (major), and A natural and B^b and B natural (minor).

* N.B.—First and Second Divisions omit Questions 6, 7, 9, and 10.

ARITHMETIC.

SECOND DIVISION.

(The work must be shown).

1. What capital, put out at $3\frac{1}{2}$ per cent. per annum, simple interest, would produce \$14 interest in $4\frac{1}{2}$ years?

2. The amount of sunshine recorded in Jersey last year in the month of April was 88 per cent. of the greatest possible amount; and the average length of the night in that Island in that month is 10 hours 30 minutes. Find how many hours of sunshine there were in the month.

3. Find the difference between the amount of \$1,205, put out for two years at 5 per cent. compound interest, and the present value of the same sum in two years' time at the same rate of interest. (Compound interest).

4. Find the cost, at \$20 per 100 sq. ft., of laying in cement the ground floor of a room, which measures 21 ft. by 18 ft., allowing for four fire-places, each 3 ft. by $2\frac{1}{2}$ ft., and for the well-hole of the stair-case a space 9 ft. square.

5. A watch gains 1 minute 15 seconds per day. It is set right at noon on the 12th of November. What will be the true time when it indicates noon on the following Christmas day?

6. If the interest on a loan for 5 months, at the rate of $8\frac{1}{2}$ per cent. per annum, be equal to the square root of \$.167281, what is the amount of the loan?

7. What is the value of one thousand four hundred ninety-one articles at £92, 11s. 1d. each ?

8. A speculator investing in $8\frac{1}{2}$ per cents. obtains 4 per cent. for his money, after paying brokerage of $\frac{1}{8}$ per cent. At what rate does he buy in ?

ALGEBRA.

SECOND DIVISION.

(All the work must be shown).

1. Find the product of $1 + x + x^4 + x^5$, and $1 - x + x^2 - x^3$.

2. Find the co-efficient of x^3 in the product of $x^3 - bx^2 - 8abx + a^2$, and $2x^2 - 3ax - b^2$.

3. Divide $1 - 6x^5 + 5x^6$ by $1 - 2x + x^2$.

4. Find the H. C. F. of $x^4 + 3x^3 - 6x - 4$, and $x^4 - 3x^3 + 6x - 4$.

5. Simplify $\frac{a-b}{b} + \frac{2a}{a-b} - \frac{a^3 + a^2b}{a^2b - b^3}$.

6. Find the value of x in :
 $\frac{1}{2}(x+1) + \frac{1}{3}(x+2) - 16 + \frac{1}{4}(x+3) = 0$.

GEOMETRY.

First Division will take 1, 2, 4, 5.

Second Division 1, 2, 3, 4.

1. What is meant by rectilineal figures ?

2. Define a scalene triangle, a rhombus, an axiom and a theorem.

3. Any two sides of a triangle are together greater than the third side.

4. Equal triangles on the same base and on the same side of it, are between the same parallels.

5. If a straight line be divided into two equal, and also into two unequal parts, the squares on the two unequal parts are together double of the square on half the line, and of the square on the line between the points of section.

ENGLISH GRAMMAR AND COMPOSITION

SECOND DIVISION.

1. How would you determine the number of verb? of a noun? of a relative pronoun?

2. Give the plurals of coach, variety, Mr., governor-general, 4, t; the past tense and perfect participle of do, go, see, run; positive of eldest, supreme, most.

3. Analyze—

Oh! there is a charm that morning has,
That gives the brow of age a smack of youth,
And makes the lip of youth breathe perfume exquisite

Give us this day our daily bread.

4. Parse the italicised words in the following—

Gives not the *hawthorn bush* a sweeter *shade*,
To shepherds *looking* on their silly sheep,
Than *doth* a rich embroidered *canopy*,
To kings *that* fear their subjects' *treachery*?

5. Correct whatever errors you discover in the following sentences:

Who did they refer it to? You or I? Let you and I go down to the beach and gather shells

Severe the doom that length of days impose,
To stand sad witness of unnumbered woes.

My friends approve my decision, especially them who are best acquainted with the circumstances

It was Joseph, him who Pharaoh promoted.

Seats were made for the pupils without backs.

COMPOSITION

Write half a dozen lines on one of the following subjects :

The atmosphere

Pleasures of boating.

Toronto Bay.

DICTATION AND DERIVATION

SECOND DIVISION.

1. Write a passage, to be dictated in the class-room.
2. Give the derivation of the following words, with the meaning of their roots, and also of the prefixes and affixes :

Administration,	Detraction,
Sincere,	Descendant,
Origin,	Assailant,
Igniting,	Transition,
Protection.	Benediction.

3. Give English words from Fero and Volo.

HISTORY.

SECOND DIVISION.

1. The Canadian Rebellion. Sketch causes, leading actors, chief events, the issue. Give dates.
2. Give an account of the Quebec Act; the British North American Act.
3. Give summaries and dates of the following Treaties as bearing upon Canadian interests; Utrecht, Paris, Ashburton.
4. Write short notes upon John Verrazani, Pontiac, Bishop Laval, Colonel Simcoe, Commodore Perry, Sir John Sherbrooke, Samuel Champlain, Annapolis. Fort Maurepas, Sackett's Harbour.
5. Sketch the chief wars of the Tudor Period.
6. Compare the forms of government in England, Canada, and United States.
7. Sketch the revival of learning during the reigns of Henry Eighth and Elizabeth.
8. Write short notes on Witenagemot, Ordeal, Gunpowder Habeas Corpus, Sturdy Beggars, Earl of Somerset, Ridley, Spenser.
9. Fix the geographical position of the following places, and connect some event of history with each; Flodden, Oxford, Smithfield, St. Andrews, Lamlithgow, Leipsic, Shoreham.
10. Give a list of eight of England's chief colonies. Describe their geographical position, and tell how and when they were acquired.

GEOGRAPHY.

SECOND DIVISION

	Val.
1. Name the principal rice, sugar, coffee, sago, and tea-producing countries.....	10
2. Give the countries of Europe and North America within the North Temperate Zone. What is the width of the Torrid Zone, and where is it situated?.....	20
3. What is the cause of the Trade Winds? What is the cause and give the course of the Gulf Stream?.....	20
4. Where are the following cities situated? Cairo, Canton, Tokio, Calcutta. Give the principal islands of the Eastern Archipelago.....	10
5. Draw a general map of North America, giving the countries, principal rivers, mountain ranges, gulfs, and boundaries.....	40

BOOKKEEPING

SECOND DIVISION.

1. How many sides has each account? Give a short name for each
2. What is meant by Resource and Liability?
3. What are Personal Accounts and with whom are the kept?
4. What are meant by days of grace, and as a rule how many do they number?
5. On what side of the Cash Account are the receipts of cash placed?

HYGIENE.

SECOND DIVISION.

	Val.
1. Name the various parts of the eye-ball.....	5
2. Give the three main divisions in the construction of the ear. How is sound produced?	5
3. Describe the organs and the process through which food passes before it serves to build up the human system ...	5
4. Describe the heart. What are the uses of arteries and veins?	5
5. What natural provision is made for purifying the blood. Name some of the causes that produce impurities in the blood.....	5
6. Which is the purer atmosphere—the atmosphere of a large city or of an elevated country-place? What are the causes of the difference?.....	5

ARITHMETIC.

THIRD DIVISION.

(The work must be shown).

1. The remainder is $\frac{2}{3}$ of the divisor, the divisor is $\frac{3}{4}$ of the quotient, and the sum of the divisor and remainder is 4 less than the quotient. Find the dividend.
2. A watch gains $1' 15''$ per day. It is set right at noon on the 12th of November. What will be the true time when it indicates noon on the following Christmas day?
3. If A can do a piece of work in 8 days, and A and B together can do it in 6 days, how long would B alone take to do it?

4. What capital, put out at $3\frac{1}{2}$ per cent. per annum simple interest, would produce \$14 interest in $3\frac{3}{4}$ years?

5. If $(2\frac{1}{2}$ of $\frac{3}{8}$) + $(\frac{3}{8}$ of $3\frac{1}{2}$ of an acre of land be worth \$178.50, what will 7 times $\frac{7\frac{3}{8} - 4\frac{1}{4}}{\frac{1}{2}}$ of $3\frac{3}{8}$ × $\frac{7\frac{3}{8}}{81\frac{3}{8}}$ of $2\frac{1}{2}$ acres be worth at the same price?

6. Find the value of $(a) \frac{4}{17}$ yd. + $\frac{42}{2047}$ pole + $\frac{1}{1452}$ rood + $\frac{2}{80855}$ acre. (b) 0.00008544921875 of a ton.

7. The distance between two towns is 20 miles 40 rods 44 yards. How many telegraph poles will be required between them, the poles being 8 rods apart?

ALGEBRA.

THIRD DIVISION.

(All the work must be shown),

1. Find the sum of $a^2 - ab + bc$, $b^2 - bc + ca$, $c^2 - ca + ab$: What is the value of your result, when $a = 2$, $b = 3$, $c = 4$.

2. Find the product of $1 + x + x^4 + x^5$, and $1 - x + x^2 - x$

3. Divide $a^2 + ab + 2ac - 2b^2 + 7bc - 8c^2$ by $a - b + 3c$.

ENGLISH GRAMMAR AND COMPOSITION.

THIRD DIVISION.

1. Define syntax, parsing, person, transitive verb.

2. Give the plural forms of country, loaf, her, t, 4; positive of sweeter, worst, best, perfect; the past tense and present participle of drink, am, spread, write.

8. How is the passive voice formed ?

In each of the following sentences change the construction in regard to voice :

I wrote two letters yesterday.

The pupils were highly commended by the visitors for their diligence and good conduct.

5. Parse the italicised words in the following sentence :

Pleasantly next *morning* *rose* the bright *sun* on the peaceful *village* *which* on the preceding day *had been* the *scene* of *this* frightful tragedy.

5. Analyse—

My mother, when I learned that thou wast dead,
Say, wast thou conscious of the tears I shed?
I heard the bells tolled on thy funeral day,
I saw the hearse that bore thee slow away.

6. Correct whatever you consider faulty in the following sentences :

Every one of the boys brought their books, done their work, and were then dismissed for the day.

Says I that's all right between you and I but I don't want no more of such compliments.

There was five of us in the boat and each of us done our best to keep Tom from setting in the bow.

There are several who could have done it as well as him or her.

 DICTATION AND DERIVATION.

THIRD DIVISION.

1. Write a passage, to be dictated in the class-room.

2. Give the derivation of the following words, with the meaning of their roots, and also of the prefixes and affixes :

Crescent,	Suspended,
Successfully,	Capitulate,
Accomplished,	Presiding,
Genealogy,	Invisible,
Conspicuous,	Symphonies.

3. Give English words derived from Crux and Duce.

ENGLISH HISTORY.

THIRD DIVISION.

1. Name, in the order of time, the various Periods or Royal Houses, from the Roman Period downwards. Give dates,

2. Name the Sovereigns of the Plantaganet Line, stating how each was related to the one who went before him. Give dates.

3. Sketch the reign of Edward First. Mention any important constitutional changes.

4. Give an account of the " Wars of the Roses."

5. Trace the causes which led to the beheading of Charles the First.

6. Who were the Lollards? the Knights Templars? the Lords Marchers? Jacobites? Chartists? In whose reigns do you read of them?

7. Who were the following personages? Lanfranc. Thomas Beckett, Saladin, Piers Gaveston, Sir Philip Sydney, Lord Clarendon,

8. Explain : Feudal Tenure, Constitutions of Clarendon, Magna Charta, Salic Law, Statute of Praemunire.

9. Name the most distinguished authors of the Tudor Period, and the title of one of the chief works of each.

10. Fix the exact geographical position of the following places, and mention some event or events of English history connected with each of them: Kenilworth, Colloden, Poitiers, Derry, Towton, Stoke-upon-Trent, Naseby, Glencoe, Magdala.

GEOGRAPHY.

THIRD DIVISION.

	Val.
1. Name the principal mountain ranges of Canada, and tell where they are to be found.....	10
2. Name the principal rivers of Canada. What is the length of the St. Lawrence and the Ottawa? What cities are built on them?	15
3. Compare the climates of Quebec, Ontario, Manitoba, and British Columbia. Where are the best wheat producing parts of the Dominion?	15
4. Name the countries of Asia bordering on the Indian Ocean	10
5. Give the principal islands of the Eastern Archipelago	10
6. Where are the following cities to be found? Cairo, Canton, Tokio, Calcutta, Alexandria	10
7. Where are the following islands? Madagascar, Ceylon, Formosa, Tasmania	10
8. What groups of islands are included in Oceanica?.....	10
9. What is latitude? What longitude? What are the latitude and longitude of Ontario?	10

HYGIENE.

THIRD AND FOURTH DIVISIONS.

	Val
1. Why is frequent bathing necessary in order to have health? When much heated, or after eating a hearty meal, why is it not good to bathe?	4
2. When a person habitually occupies a stooping position, what is the tendency of this upon the chest and lungs? What should be done to counteract this tendency?	4
3. What is the best kind of clothing to be worn in winter time. In regard to health, what is the tendency of wearing thin-soled boots in damp or cold weather?	4
4. Name some of the common and more wholesome articles of food. Many things eaten are injurious to health; name some of them?	4
5. What are the uses of the lungs, the stomach, and the heart?	4
6. Describe the circulation of the blood.....	10

 ARITHMETIC.

FOURTH DIVISION.

(The work must be shown.)

1. How much must be added to sixty millions two hundred four thousand two hundred to make two hundred fifty millions?
2. Divide four hundred thirty millions one hundred three thousand by five thousand eight hundred twenty-nine.
3. What is the value of one thousand four hundred ninety-one articles at £32, 11s. 1d. each?

4. Divide $2\frac{2}{3} + 3\frac{2}{3}$ of $1\frac{1}{3}$ by $5\frac{1}{2}$ of $1\frac{1}{3} - \frac{2\frac{1}{2}}{4\frac{1}{11}}$

5. Express as a decimal the difference of the two quotients of $\frac{2}{3}$ and $\frac{1}{10}$.

6. A ship sails 6 miles per hour ; how long will it take to sail round the world, a distance of 25,000 miles ?

7. If 20 men can move 20 cubic yards of rock in 20 minutes, how long will 8 men be in moving 8 cubic yards ?

ENGLISH GRAMMAR AND COMPOSITION.

FOURTH DIVISION.

1. What parts of speech undergo changes of form ? What are these changes called ?

2. Give the possessive singular and plural of pony, girl, fox, woman ; nominative singular of thieves, brethren, clothes ; past tense and past participle of begin, strike, sit ; positive degree of perfect, steadier, next.

3. Define predicate, relative pronoun, intransitive verb.

4. In *midst* of all *this* confusion the *master* of the ship with *calmness* and decision *gave* his orders and brought the *vessel uninjured* into the harbour.

James *Black*, *black* your boots and then put on your *black* suit. Can you spell *black* ?

Parse the words in italics in the above sentences.

5. Analyze the following—

The descendants of those heroes who sacrificed life and property for their country's honor will maintain the present connection with the mother land.

6. Correct anything faulty in the following sentences.

I never studied no grammar but I can speak just as good as them that has.

Which is the largest number, the subtrahend or the minuend?

Them that honor me I will honor, but them that despise me shall be lightly esteemed.

Every one of the boys brought their books and were questioned on the lesson.

He that receives no misdemeanor marks I shall consider worthy of honorable mention.

DICTIONATION AND DERIVATION.

FOURTH DIVISION.

1. Write a passage to be dictated in the class-room.
2. Give the derivations of the following words, with the meaning of their roots, and also of the prefixes and affixes:

Exaggerated,	Correspondence,
Distinguished,	Prosecution,
Independence,	Perpetuated,
Magnificent,	Chronicler,
Allurement,	Unfortunately.

CANADIAN HISTORY.

FOURTH DIVISION.

- I. Give the geographical boundaries of the Dominion of Canada. Name the provinces of which it consists, and the capital of each.

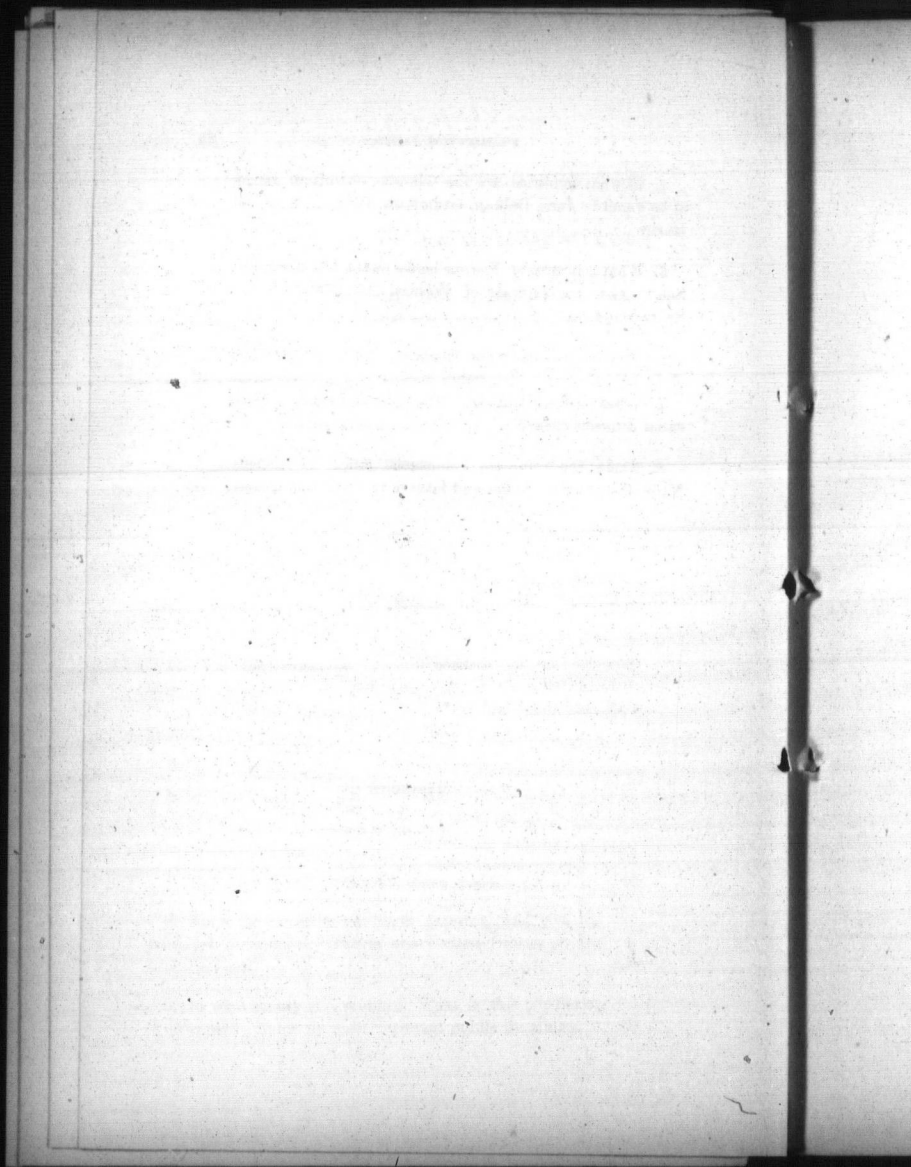
2. Describe the mode of government of the Dominion, and of each of the provinces.
3. Name the chief periods into which the history of Canada may be divided—giving dates.
4. Write an account of the chief Indian tribes. State particularly where they lived, and how they behaved towards the French and English colonists.
5. Name the French Governors-General of Canada in the order of their appointment. Give dates, and mention some historical fact connected with each Governor.
6. Who were the U. E. Loyalists?
7. Give an account of the Washington Treaty.
8. Sketch the history of the city of Toronto.
9. Give a brief account of each of the following persons : John Cabot, Jacques Cartier, Samuel Champlain, Montcalm, Sir Isaac Brock, The Earl of Elgin.
10. Fix the exact geographical position of the following places, and connect with each some fact of Canadian history : Dieppe, Cataraqui, Detriot, Three Rivers, La-Colle, Chrysler's Farm.

GEOGRAPHY.

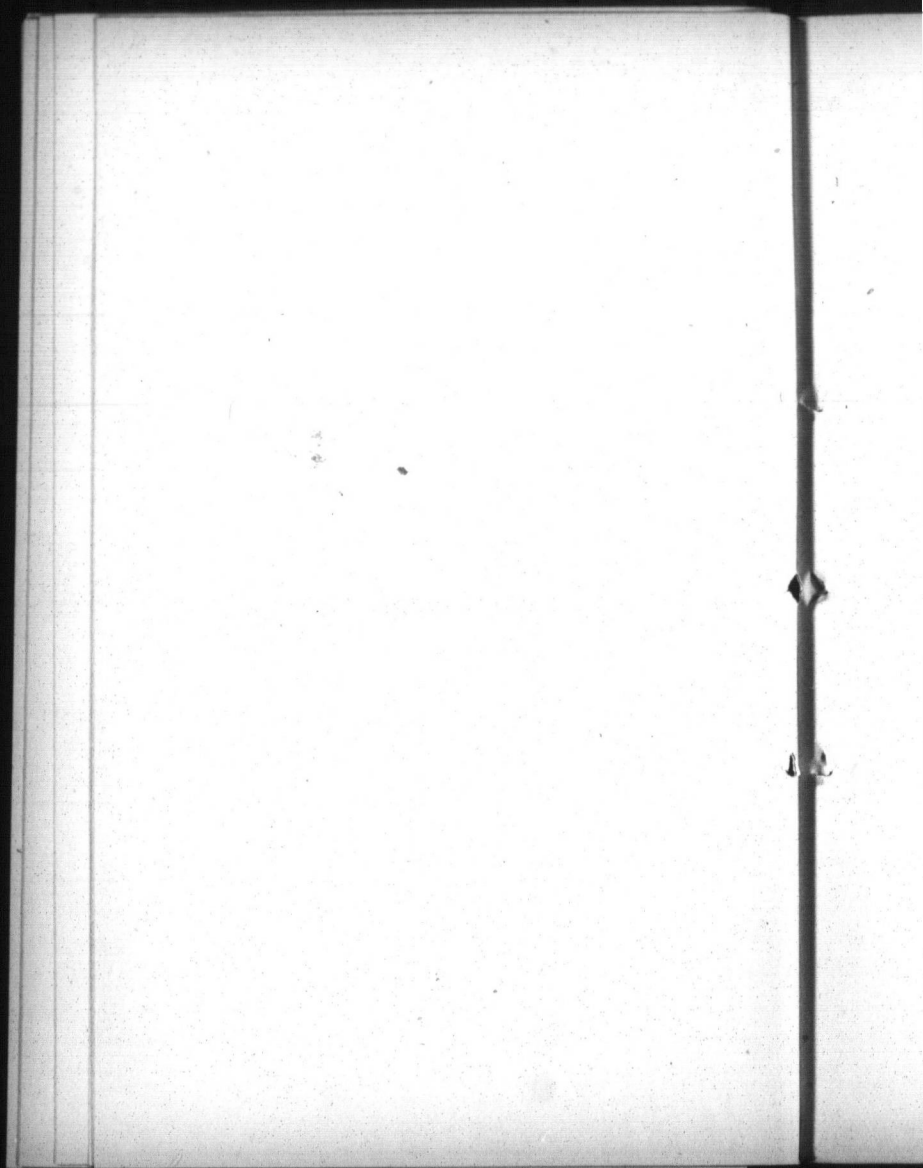
FOURTH DIVISION.

- | | Val |
|--|-----|
| 1. Define continent, peninsula, island, oasis | 10 |
| 2. Name the countries of North America, and give the principal commercial cities of the United States on the Atlantic Coast..... | 20 |
| 3. In what county is Toronto? What is the population of Toronto? Name its most important public buildings..... | 10 |

4. In what countries are the following mountain ranges to be found? Jura, Balkan, Grampians, Pennine, Alps and Rocky..... 10
5. What countries of Europe border on the Mediterranean Sea? Give the capitals of Portugal, Denmark, France, Switzerland..... 15
6. Give the boundaries of England. Name the Provinces of Ireland..... 10
7. Where is Loch Linnhe? Where Moray Firth? What canal connects them?..... 10
8. Name the principal commercial cities of Canada. Name the principal rivers and lakes of Ontario and Quebec. 15



Secretary-Treasurer's
Financial Statements.



SECRETARY-TREASURER'S.

Financial Statements.

*Annual General Statement of Receipts and Expenditure for
Public School Purposes, City of Toronto, for the Year
ending December 31st, 1884.*

RECEIPTS FOR 1884.

Balance in City Treasury for 1883	\$14,990 27
Cash on hand	13 73
Legislative Appropriation for 1884	10,578 00
" " " for Brockton	60 00
Municipal Assessment for General School Pur- poses	139,437 00
Municipal Assessment for Building Purposes	29,277 87
Fees from Non-Resident Pupils	98 00
From Riverside School Board	1,392 76
Insurance Losses by Fire, Hope Street School	1,242 62
Sale of Cottage adjoining Bathurst St. School	25 00
Rent of Vacant Lot rear of J. Ketchum School	20 00
Total	\$197,135 25

EXPENDITURE FOR 1884.

1. New School Buildings, Sites, Furniture, &c., as per statement in detail. (See Appen- dix A)	\$37,225 92
2. Repairs, Alterations, and Improvements at the several Schools, as per statement in detail. (See Appendix B)	10,065 42
3. Salaries of Officers, Teachers and Caretakers, as per statement in detail. (See Appen- dix C)	121,394 73
4. New School Furniture. (See Appendix D).. .. .	2,724 13

Carried Forward, \$171,410 20

<i>Brought Forward</i>	\$171,410 20
5. Fuel for Schools, Offices &c. (See Appendix E)	9,624 28
6. Insurance Premiums. (See Appendix F)	776 91
7. Printing, Stationery, School Supplies, Apparatus, Prize Books, &c. (See Appendix G)	3,326 30
8. Expenditure on Night Schools. (See Appendix H)	1,703 67
9. Miscellaneous Expenditure. (See Appendix I)	2,611 71
10. Heating Apparatus, Stoves, and Tinsmith work, &c. (See Appendix J)	2,108 73
11. Water Rates for all the Schools	2,363 85
12. W. Taylor, Note made by Trustees of late Brockton School Board	641 05
13. Cash on hand	62 57
Total Expenditure	194,629 27
Balance to 1885	2,505 98
Total	\$197,135 25

Certified,

Audited and approved,

W. C. WILKINSON,	WM. ANDERSON,	} <i>Municipal Audit'rs.</i> <i>of School Accounts.</i>
<i>Sec'y Treas.</i>	W. R. HUGHES	

Audited and approved,

R. R. FITZGERALD,

School Board Auditor.

Toronto, January, 1885.

APPENDIX A.

Statement in detail of Expenditure on Account of New School Buildings, Sites, &c., during 1884, given as one sum in Item No. 1, General Statement.

ROSE AVENUE SCHOOL.

G. Hardy, Balance of Masonry Contract	\$988 80
T. V. Gearing, Balance of Carpenter's Contract ..	723 74
W. H. Tozar, Balance of Plasterer's Contract ..	224 00
Henderson, Mullen & Co., Balance of Painter's Contract	194 00
McCurdy Bros., Balance of Galvanized Iron Contract	74 00
John Ritchie, Plumber's Contract	512 00
R. Rennie, Balance of Slater's Contract	40 00
D. B. Dick, Architect's Commission	432 77
	<hr/>
	\$3,189 31

VICTORIA STREET SCHOOL.

Vokes Bros., Masonry Contract	\$3,866 00
Wilson & Howard, Carpenter's Contract	3,856 00
C. R. Rundle & Co., on Account of Plasterer's Contract	713 50
Faircloth Bros., Painter's and Glazier's Work ..	402 30
Geo. Ringham, Galvanized Iron Work	234 20
D. W. Kinghorn, Plumber's Work	74 00
R. Rennie, Slater's Work	130 00
N. B. Dick, on Account of Architect's Commission ..	200 00
	<hr/>
	9,476 30

BORDEN STREET SCHOOL.

Page & Harris, Masonry Work	\$2,900 00
Scott & Cross, Carpenter's Work	2,702 10
C. R. Rundle & Co., Plasterer's Work	498 00
A. M. Browne, Painter's and Glazier's Work ..	172 00
Douglas Bros., Galvanized Iron Work	74 50
W. G. Storm, Architect's Commission	315 65
	<hr/>
	6,662 25

Carried forward \$19,927 86

FINANCIAL STATEMENTS.

Brought forward \$19,827 86

NIAGARA STREET SCHOOL.

Page & Harris, Masonry Work	\$1,347 00
G. Burry, Carpenter's Work	1,788 10
C. R. Rundle & Co., Plasterer's Work	266 00
Douglas Bros., Galvanized Iron work	40 00
Faircloth Bros., Painter's and Glazier's Work	123 00
W. J. Burroughs, Plumber's Work	47 19
A. R. Denison, Architect's Commission	180 65
	<hr/>
	3,781 94

DEWSON STREET SCHOOL.

John Jones, Masonry Work	\$3,465 50
F. Thorpe, on Account of Carpenter's Work	2,625 00
J. Ferguson, on Account of Plasterer's Work	328 00
A. M. Browne, Painter's and Glazier's Work	303 00
Douglas Bros., on Account of Galvanized Iron Work	100 00
J. S. Champ & Co., Felt Roofers' Work	35 00
W. R. Strickland, on Account of Architect's Com- mission	250 00
	<hr/>
	7,106 50

ELIZABETH STREET SCHOOL.

Wilson & Howard, Carpenter's Work	\$1,034 00
John Little, Plasterer's Work,	462 50
Faircloth Bros., Painter's and Glazier's Work,	66 00
E. J. Lennox, Architect's Commission	86 12
	<hr/>
	1,648 62

SCHOOL SITES.

Morrison & Taylor, Site on Morse Street, St. Law- rence Ward.	\$1,600 00
Thos. Gray, Lot adjoining Wellesley School	2,600 00
Mrs. Flood, Lot adjoining Bathurst St. School	1,000 00
	<hr/>
	5,200 00

HOPE STREET SCHOOL.

John Little, Balance of Account for Plasterer's Work	\$ 48 85
A. R. Denison, Balance of Architect's Com- mission	112 15
	<hr/>
	161 00
 Total of Item No. 1	 \$37,225 92

APPENDIX B.

Statement in detail of Expenditure for Repairs, Alterations, and Improvements at the Several Schools during 1884, given in one sum in Item No. 2, in General Statement.

BATHURST STREET SCHOOL.

John Sloan, Constructing Closets, Urinals, Drains, Removing Sheds, Planking, &c.	\$1,520 01	
R. C. Windeyer, Architect's Commission	71 15	
John Mansfield, Re-glazing	23 75	
City Treasurer's Department, connecting with Sewer	17 50	
Unwin, Brown & Sankey, Surveying Lot	6 00	
F. B. Hawkes, Plumber's Work	0 70	
		<hr/> \$1,639 11

BORDEN STREET SCHOOL.

W. Berry, Removing Night Soil	\$90 07	
Scott & Cross, Carpenter's and Plumber's Work	32 63	
F. B. Hawkes, Plumber's Work	3 55	
Mrs. Goldsmith, Extra Work Cleaning New Rooms	8 00	
		<hr/> 134 25

BOLTON STREET SCHOOL.

James McKerrow, Carpenter's Work	\$72 35	
James Dawson, Carpenter's Work	9 40	
W. Baillie, Carpenter's Work	2 00	
W. B. Poulton, Re-Glazing	3 00	
J. Snook, Removing Night-Soil	8 00	
		<hr/> 94 75

BRANT STREET SCHOOL.

John Sloan, Carpenter's Work	\$34 90	
W. Baillie, Carpenter's Work	7 69	
J. Mansfield, Re-Glazing	21 75	
W. J. Guy, Plumber's Work	5 15	
F. B. Hawkes, Plumber's Work	2 43	
		<hr/> 71 92

Carried forward		<hr/> \$1,940 03
---------------------------	--	------------------

FINANCIAL STATEMENTS.

Brought forward \$1,940 03

CHURCH STREET SCHOOL.

E. W. Powers, Constructing Additional Stair-way	\$308 00	
D. Roberts, Architect's Commission	15 00	
Dudley & Scott, Carpenter's Work	90 96	
W. Baillie, " "	17-20	
J. Fraser, Painting, Kalsomining, and Re-Glazing	53 40	
Gilmour & Johnston, Frosting Windows	5 50	
W. J. Gibson, Plumber's Work	1 80	
		491 86

COTTINGHAM STREET SCHOOL

W. Berry, Removing Night-Soil 113 30

DUFFERIN SCHOOL.

Dudley & Scott, Carpenter's Work, &c.	\$96 26	
E. Stephenson & Co., Lumber & Material	27 36	
Jas. Greer, Plasterer's Work	42 00	
W. Menary, " "	15 00	
Chas. Reed, Re-Glazing	67 75	
W. J. Gibson, Plumber's Work	7 70	
W. Berry, Removing Night-Soil	137 05	
		393 12

EASTERN AVENUE SCHOOL.

W. Williamson, Repairs 9 00

ELIZABETH STREET SCHOOL.

A. Hunter, Allowance for Cleaning New Rooms	\$12 00	
W. Baillie, Carpenter's Work	5 25	
J. Fraser, Kalsomining and Re-glazing	16 50	
C. H. Page, Whitewashing Closets	8 00	
John Little, Plasterer's Work	4 50	
H. Murphy, Cleaning Snow off Roof	5 00	
A. Hunter, Repairs	0 25	
		51 48

Carried forward \$2,998 79

FINANCIAL STATEMENTS.

7

Brought forward \$2,998 79

GEORGE STREET SCHOOL.

Faircloth Bros., Kalsomining, Re-glazing, &c.	\$169 45
Dudley & Scott, Carpenter's Work	53 43
W. Baillie, " "	16 70
Wilson & Howard, " "	2 25
E. H. Boddy, Re-glazing	6 85
G. H. Beavis, Plumber's Work	5 75

 254 43

GIVENS' STREET SCHOOL.

E. W. Powers, Planking Yard	\$175 00
F. Thorpe, Carpenter's Work	108 60
J. Sloan, " "	24 72
J. Mansfield, Painting Fence, &c.	15 15
F. B. Hawkes, Plumber's Work	3 86
W. Baillie, Repairs	1 00
P. Anderson, Repairs to Lock	0 45

 328 78

HOPE STREET SCHOOL.

Rikard & Reid, Contract for making good the damage caused by fire	\$503 48
Thos. Croft, Services as Watchman during Repairs	22 40
H. Fox, for Services Adjusting Insurance	10 00
Stewart & Denison, Architect's Fees	23 00
John Sloan, Carpenter's Work	186 60
A. Cahoon, Kalsomining	68 00
Geo. Burry, Carpenter's Work	63 72
E. W. Powers, Slate Black Boards	32 00
J. Hatch & Son, Plumber's Work	16 95
M. Vokes, Brick Work	2 30
J. Mansfield, Re-glazing	16 65
W. Baillie, Repairs.. .. .	75

 945 85

HOWARD STREET SCHOOL.

F. Thorpe, Carpenter's Work	\$49 29
J. Parker, " "	13 93
A. Cahoon, Painting and Re-glazing	25 00
A. Edwards, Plastering and Whitewashing	9 85
D. Plews, Pump, Platform, and Cleaning Well	30 05

 127 62

Carried forward \$4,655 47

FINANCIAL STATEMENTS.

Brought forward \$4,655 47

JESSIE KETCHUM SCHOOL.

Martin & Harniaman, Carpenter's Work ..	\$472 92	
M. Wilmont, Architect's Commission	40 00	
H. Clayton, Kalsomining and Re-glazing ..	25 55	
W. L. Huddart, Repairs	7 50	
	<hr/>	545 97

JOHN STREET SCHOOL.

W. H. Fergusson, Carpenter's Bricklayer's and Plumber's Work	\$185 15	
W. Baillie, Repairs.. .. .	7 76	
	<hr/>	192 91

LESLIE STREET SCHOOL.

Willson & Howard, Re-modelling and Improving Building	\$339 30	
R. C. Windeyer, Architect's Commission ..	16 29	
	<hr/>	355 59

LOUSIA STREET SCHOOL.

Thomas Hammet, Overhauling and Construct- ing Drains	\$178 00	
W. Baillie, Carpenter's Work	111 91	
R. A. Townley, Plumber's Work.. .. .	42 42	
J. Frazer, Re-glazing	9 46	
C. H. Page, Whitewashing Closets, &c. . . .	8 00	
W. Berry, Removing Night-Soil	49 80	
	<hr/>	399 09

MABEL STREET SCHOOL.

Jas. Nelson, Building Sheds and Carpenter Work	\$197 65	
H. Weatherden, Repairs	3 50	
J. Mansfield, Re-glazing	7 05	
	<hr/>	208 20

NIAGARA STREET SCHOOL.

City Treasurer's Department, Constructing Private Drain	\$22 00	
J. Mansfield, Re-glazing	10 65	
S. Phillip, Repairs	3 00	
W. Berry, Removing Night-Soil	69 75	
	<hr/>	105 40

Carried forward \$6,462 68

FINANCIAL STATEMENTS.

9

Brought forward \$6,462 63

PALACE STREET SCHOOL.

W. Williamson, Carpenter's Work, &c.	\$55 95	
W. Baillie " "	1 85	
E. H. Boddy, Re-glazing	4 25	
W. J. Gibson, Plumber's Work	3 10	
C. H. Page, Whitewashing Closets	5 00	
		<u>70 15</u>

PARK SCHOOL.

Wilson & Howard, Carpenter's Work, &c.	\$152 07	
E. H. Boddy, Painting and Re-glazing	52 10	
W. J. Gibson, Plumber's Work	12 00	
G. H. Beavis " "	5 00	
W. Baillie, Repairs	5 29	
W. Virgin, Cutting Grass	5 00	
		<u>231 46</u>

PARLIAMENT STREET SCHOOL.

Wilson & Howard, Carpenter's Work, &c.	\$267 00	
W. Baillie " "	6 75	
E. H. Boddy, Re-glazing	20 75	
W. J. Gibson, Plumber's Work	13 70	
J. W. Atkinson, Repairing Lock	0 40	
		<u>308 60</u>

PHEBE STREET SCHOOL.

J. Nelson, Carpenter's Work, &c.	\$144 55	
W. Baillie " "	7 90	
G. H. Beavis, Plumber's Work	3 00	
C. H. Page, Whitewashing Closets	8 00	
J. Mansfield, Re-glazing	49 75	
		<u>213 20</u>

ROSE AVENUE SCHOOL.

T. M. Bryer, Carpenter's Work	\$16 60	
W. Baillie, " "	1 50	
Mrs. Winters, Extra Work as Caretaker	8 75	
		<u>21 85</u>
Carried forward		\$7,307 89

<i>Brought forward</i>		\$7,307 89
RYERSON SCHOOL.		
J. Nelson, Carpenter's work, &c.	\$126 19	
F. W. Hawkes, Plumber's Work	13 35	
J. Marsfield, Re-glazing	13 80	
M. Martin, Re-glazing	15 00	
		168 34
VICTORIA STREET SCHOOL.		
W. Berry, Removing Night-Soil	\$115 60	
City Treasurer's Department, Constructing Private Drains	24 00	
W. Jones, Connecting Private Drains with Closets.	15 00	
W. Baillie, Repairs	4 45	
		159 05
WELLESLEY SCHOOL.		
Wilson & Howard, Constructing Closets, Urinals, Drains, Removing Sheds, Planking, &c. ..	\$1,740 75	
R. C. Windeyer, Architect's Commission ..	87 05	
W. Berry, Removing Night-Soil	64 00	
R. Rennie, Slater's Work	19 25	
W. Wanty, Levelling Yard	7 00	
J. Fraser, Kalsomining & Re-glazing	42 30	
Unwin, Brown & Sankey, Surveying Lot ..	6 00	
W. Henley, Repairing Window Frames ..	4 60	
Richard Bros., Repairing Eavetroughs ..	4 40	
		1,975 35
WINCHESTER STREET SCHOOL.		
T. M. Bryer, Carpenter's Work	\$41 67	
W. Baillie, "	23 75	
W. J. Gibson, Plumber's Work	11 05	
E. H. Boddy, Re-glazing	16 30	
		92 77
YORK STREET SCHOOL.		
W. Baillie, Carpenter's work	\$42 17	
Wilson & Howard, "	26 80	
A. M. Browne, Kalsomining and Re-glazing ..	30 65	
W. J. Gibson, Plumber's Work	5 20	
F. Hyde, Water Tap	3 25	
J. Roberts, Locks	2 75	
		110 82
<i>Carried forward</i>		\$9,814 22

FINANCIAL STATEMENTS.

11

Brought forward \$9,814 22

MISCELLANEOUS.

E. H. Boddy, Re-facing Blackboards at Sundry Schools	\$100 00
Sweeping Chimnies at all the Schools	31 40
John Gray, Shade Trees for Sundry Schools	30 00
Wm. Baillie, Tree Boxes " " " "	25 40
Expenses of Annual Inspection of School Property	28 10
Unwin, Brown & Sankey, Surveying Site, Morse Street	6 00
Unwin, Brown & Sankey, Surveying Site, Dewson Street	6 00
Wm. Newell, Cab Hire for Committee	10 30
J. Fraser, Re-glazing at Sundry Schools	7 75
J. Roberts, Repairing Locks, &c.	6 25
	251 20
Total of Item No. 2	\$10,065 42

APPENDIX C.

Statement in Detail of Salaries of Officers, Teachers, Caretakers, &c., paid during 1884, as given in one sum in Item No. 3, General Statement.

OFFICERS, ETC.

Browne, Mr. H., Inspector's Assistant	\$ 700 00
Examiners (Combined Ex.)	190 00
Fitzgerald, Mr. R. C., Auditor	60 00
Hughes, Mr. J. L., Inspector	2,000 00
Thompson, Mr. J. T., Drill Instructor	800 00
Wilkinson, Mr. W. C., Secretary	1,500 00
Woodland, Mr. C. R., Messenger, &c.	675 00
Caretakers	6,982 94
	\$12,857 94
Carried forward.. .. .	\$12,857 94

Brought forward \$12,857 94

TEACHERS.

Agnew, Mrs. J. N.	\$495 23
Allan, Miss K. M.	474 11
Alexander, Miss J.	240 56
Anderson, Mr. Jas.	950 00
Anderson, Miss J.	425 00
Anderson, Miss L.	283 28
Anderson, Miss M.	365 00
Armstrong, Miss A. L.	550 00
Armstrong, Mr. J. E.	525 00
Arthurs, Mrs. J. S.	550 00
August, Miss M.	369 29
Assistant Kindergarteners	200 00
Bailey, Miss L.	525 00
Balmer, Mrs. J. S.	499 00
Beattie, Miss A. V.	395 30
Bell, Mrs. J. E.	423 58
Berney, Miss E.	365 00
Black, Miss A.	35 41
Black, Miss P.	415 98
Boddy, Mr. Jas.	900 00
Bradshaw, Miss J.	365 00
Breckon, Mrs. K.	498 07
Brown, Miss B.	430 88
Brown, Miss J. F.	425 00
Brown, Miss S. G.	303 06
Brown, Miss A.	121 66
Briant, Miss L. E.	251 63
Buik, Miss M.	551 20
Cameron, Miss A.	523 01
Campbell, Mr. John	1,100 00
Campbell, Miss J.	523 01
Carey, Mrs. A.	525 00
Carlyle, Miss T.	475 00
Carlyle, Miss J.	425 00
Carroll, Miss B.	121 72
Cassidy, Mr. W.	913 52
Cathcart, Miss C.	398 36
Chadwick, Miss E. M.	444 90
Chambers, Miss A. C.	118 74
		<hr/>
		\$30,359 44
Carried forward		\$30,359 44

FINANCIAL STATEMENTS.

13

<i>Brought forward</i>	\$30,359 44
Cheney, Miss E.	385 00
Chown, Miss A.	121 66
Christie, Miss C.	365 00
Church, Miss R.	381 66
Churchill, Miss C. M.	700 00
Clark, Mr. L. J.	1,100 00
Clark, Mr. H.	450 00
Clarke, Miss E.	371 64
Clarkson, Miss H.	389 51
Coad, Mrs. L.	397 56
Cornor, Miss L.	483 36
Coupland, Miss A.	358 64
Coyne, Miss O.	524 01
Coyne, Mr. S. (Superannuation Allowance)	250 00
Crane, Mr. George	1,000 00
Cranfield, Mrs. R. A.	365 00
Cruise, Miss J. H.	531 28
Cullen, Miss A. M.	311 86
Cullen, Miss A. E.	121 66
Daw, Miss E.	385 00
Dickenson, Miss L.	425 00
Doan, Mr. R. W.	1,100 00
Dunn, Miss O.	702 27
Eadie, Miss A.	187 49
Eadie, Miss C.	60 13
Eadie, Miss J.	365 00
Emery, Miss M.	398 36
Featherstonhangh, Miss. M.	375 96
Fell, Miss A.	385 00
Fortune, Miss M.	365 00
Foulds, Miss L.	450 00
Fraser, Miss H.	364 08
Fraser, Miss J.	365 00
Freeman, Miss A.	475 00
Gellatley, Miss L.	447 46
Gill, Mr. M.	1,100 00
Gillin, Miss E.	600 00
Gladish, Miss L. G.	121 66
Glassford, Miss M. E.	371 64
Gray, Miss A. A.	483 36
Gray, Miss C. M.	500 00
				<hr/>
				\$48,994 69
<i>Carried forward</i>	\$48,994 69

FINANCIAL STATEMENT.

<i>Brought forward</i>	\$48,994 69
Gray, Miss E. R.	450 00
Gray, Mrs. C.	121 66
Gray, Mrs. J.	319 38
Green, Mrs. E. A.	500 00
Greer, Mrs. J.	423 40
Gunn, Miss J.	496 22
Gunn, Miss M.	496 22
Gregg, Mrs. M.	478 21
Hagarty, Miss S.	450 00
Hamilton, Miss S.	578 91
Hamilton, Miss S. M.	560 00
Hardy, Miss K. A.	385 00
Hardy, Miss E. J.	320 80
Harney, Miss E. N.	398 36
Hendry, Mr. W. J.	1,100 00
Hendry, Mr. A.	1,000 00
Hodgson, Miss N.	475 00
Hodgson, Miss A.	365 00
Holterman, Miss C. M.	101 61
How, Miss H.	550 00
Hunter, Miss M. J.	475 00
Hutchinson, Miss M. M.	363 62
Iles, Miss I.	121 66
Jackson, Miss C.	357 01
Johnston, Miss H.	377 63
Johnston, Miss N.	365 00
Johnston, Miss M. L.	121 66
Jones, Miss H. M.	365 00
Kennedy, Miss E.	550 00
Kennedy, Miss Emma	568 28
Keown, Miss M. J.	600 00
Kessack, Miss E.	458 36
Kettles, Miss M. E.	365 00
Killoch, Miss A.	553 83
Laidlaw, Miss H. B.	385 00
Lanskail, Miss H. J.	365 56
Langlois, Miss G.	370 18
Langton, Miss Emily	371 64
Leadley, Mrs. L.	525 00
Lewis, Mr. R.	1,200 00
Lewis, Miss K.	75 00
				<hr/>
				\$67,417 89
<i>Carried forward</i>	\$67,417 89

FINANCIAL STATEMENT.

15

<i>Brought forward</i>	\$67,417 89
Lilly, Mrs. E.	475 00
Lumsden Miss L.	458 89
Llwyd, Mrs. E.	418 60
McAdam, Miss E.	365 23
McAllister, Mr. S.	1,200 00
McBrien, Mrs. J. A.	475 00
McCally, Miss M. J.	433 28
McCausland, Mr. R.	950 00
McCreight, Miss S.	550 00
McCreight, Miss E.	385 00
McCusag, Mrs. M.	466 68
Macdonald, Mr. A. F.	1,197 72
McGregor, Mrs. K.	371 64
McDonald, Mrs. M. A.	500 00
McFarlane, Mrs. B.	120 97
McPaul, Miss L.	60 83
McIntyre, Miss A.	446 60
McKenzie, Miss S.	475 00
McKee, Miss A.	411 68
McKee, Miss F.	390 36
McKim, Miss I. F.	371 64
McMain, Mr. C.	525 01
Marean, Miss A.	300 00
Mark, Miss J.	425 00
Martin, Mr. R. T.	927 11
Martin, Miss F.	450 00
Martin, Miss A. T.	425 00
Martin, Miss M.	121 66
Mearns, Miss B.	499 01
Miller, Mrs. E. A.	500 00
Milne, Miss M.	450 00
Milne, Miss J.	385 00
Monahan, Mrs. G.	385 00
Morrison, Mr. A.	1,000 00
Mullen, Miss M.	483 28
Muir, Mrs. J.	371 64
Muir, Mr. Alex.	387 50
Myers, Miss A.	121 66
Nivin, Miss J.	385 00
Niven, Miss C.	121 66
Nudel, Miss I.	433 28
O'Brien, Mr. L. R.	700 00
		<hr/>
		\$87,288 82
<i>Carried forward</i>	\$87,288 82

<i>Brought forward</i>	\$87,288 32
Pidgeon, Miss M.	303 49
Parker, Mr. T.	900 00
Payne, Miss L.	450 00
Palmer, Miss L.	365 00
Perrin, Mr. A. P.	800 00
Phillips, Mr. John	750 00
Phillips, Miss I.	256 64
Powell, Mr. G. K.	963 51
Purdie, Miss R. E.	385 00
Pyne, Mr. A. R.	1,000 00
Polley, Mrs. A.	326 99
Riches, Mrs. G. S.	700 00
Robertson, Miss M.	365 00
Rogers, Miss J.	548 96
Ross, Miss H.	121 66
Ross, Miss I.	121 66
Sams, Miss E. Y.	458 36
Sanders, Miss M.	371 64
Sanders, Miss H. V.	256 64
Sanderson, Miss A.	450 00
Sanderson, Miss C. E.	121 66
Scarlett, Miss K.	537 52
Scobie, Miss S. E. A.	412 20
Sefton, Miss M. E.	475 00
Sefton, Miss A. M.	448 30
Semple, Miss J.	398 36
Shier, Miss M. B.	371 64
Sims, Miss A.	475 00
Sims, Miss F.	420 21
Sims, Miss E.	370 39
Slater, Miss L.	450 00
Slater, Mr. J. T.	750 00
Smith, Miss M. B.	474 11
Smith, Miss S.	371 64
Smyth, Miss J.	481 10
Smyth, Miss M.	425 00
Sheppard, Miss M. G.	370 95
Sheppard, Miss M.	60 85
Spence, Miss M. F.	450 00
Spence, Miss Maggie	450 00
Spotton, Miss C. E.	575 00
				<hr/>
				\$106,072 28
<i>Carried forward</i>	\$106,072 28

FINANCIAL STATEMENTS.

17

<i>Brought forward</i>	\$106,072 28
Spotton, Mr. W. (Superannuation Allowance)..	250 00
Stevens, Mr. E. A.	750 00
Stevenson, Mrs. K.	537 52
Steward, Mrs M.	449 15
Straubel, Miss I. V.	280 08
Sturrock, Miss C. E.	450 00
Sturrock, Miss M.	365 00
Sykes, Miss C.	504 17
Taylor, Miss S. L.	449 15
Tector, Miss L.	187 47
Thompson, Miss R.	550 00
Thompson, Miss F.	458 36
Thorold, Mrs. A.	397 53
Tomlinson, Miss T.	383 54
Tomlinson, Miss M.	370 95
Tracey, Miss F.	225 00
Wallace, Miss M. J.	371 64
Walker, Miss M. L.	101 61
Warburton, Mrs. G. C.	398 36
Warren, Miss M. J.	121 66
Waterson, Miss A. T.	425 00
Watson, Miss C. J.	473 22
Watson, Mr. J.	861 81
Westman, Miss M. A.	475 00
White, Miss M.	356 31
Williams, Miss E. A.	650 00
Williams, Miss E. C.	66 93
Wilson, Miss M.	252 26
Wilson, Miss A.	363 62
Woods, Miss M.	508 28
Wooley, Miss N.	205 72
Worth, Miss M.	575 00
Young, Miss M.	365 00
Young, Miss M. L.	363 12
Young, Miss L.	101 61
Occasional Teachers	1,678 88

Total of Item No. 3

\$121,394 78

APPENDIX D.

*Statement in detail of Expenditure for New Furniture for
Schools, from Messrs. R. Hay & Co., as given in Item
No. 4.*

Borden Street School—New York Grammar Desks	\$137 60
“ “ Toronto Junior “	185 60
“ “ St. Louis Primary “	140 60
“ “ Teachers' Desk, Tables, &c.	34 61
Victoria Street School—New York Grammar Desks	151 20
“ “ Toronto Junior “	87 00
“ “ St. Louis Primary “	133 20
“ “ Teachers' Desk, Tables, &c.	35 11
“ “ Tables for Kindergarten	82 50
“ “ Chairs “ “	51 00
“ “ Book Case “ “	23 00
Niagara Street School—Toronto Junior Desks	92 80
“ “ Tables and Chairs	11 43
Bathurst Street School—Toronto Junior Desks	104 40
George Street School—New York Grammar Desks	137 60
“ “ Toronto Junior Desks	11 60
Elizabeth Street School—New York Grammar Desks	120 40
“ “ Toronto Junior Desks	185 60
“ “ Teachers' Table and Chairs	22 77
Phoebe Street School—St. Louis Primary Desks	133 20
Hope Street School—Toronto Junior	104 40
Howard Street School—New York Grammar Desks	43 00
“ “ Toronto Junior Desks	23 20
“ “ St. Louis Primary Desks	22 20
“ “ Teacher's Table and Chairs	7 60
Dewson Street School—Junior and Primary Desks	61 18
“ “ Teachers' Desk	10 25
Mabel Street School—Desks (1883)	25 20
Palace Street School—Teacher's Desk	10 25
Orphans' Home—St. Louis Primary Desks	46 25
“ “ Toronto Junior Desks	72 50
Boys' Home—St. Louis Primary Desks	44 40
“ “ Toronto Junior Desks	72 50
Rose Avenue School—Chairs	16 94
Board Room—Chairs and Tables	41 00
Winchester Street School—Ink Wells	7 75
Louisa Street School—Chairs	9 00
<i>Carried forward</i>	\$2,498 84

FINANCIAL STATEMENTS.

19

<i>Brought forward</i>	\$2,498 84
Ryerson School—Washstand and Crockery	11 00
Models for Schools	36 00
Pointers for Schools	25 00
Repairing and Moving School Furniture, Supplies, &c. ..	153 29
	<hr/>
Total of Item No. 4	\$2,724 13

APPENDIX E.

Statement of Expenditure for Fuel for all the Schools, Board Room and Offices, during 1884, as given in Item No. 5, in General Statement.

Wm. McGill & Co., Wood and Coal	\$6,806 51
C. J. Smith, Wood	1,048 20
P. D. Conger, Coal	513 45
Wm. Bell, Wood	74 13
H. Woodrow, Coal	23 65
W. McGowan, Removing Wood	15 00
Sundry Persons, Cutting Wood at all the Schools	1,154 34
	<hr/>
Total of Item No. 5	\$9,624 28

APPENDIX F.

Statement of Expenditure for Premiums on Insurance paid during 1884, as given in Item No. 6, in General Statement.

Citizens' Insurance Company	\$277 94
Phoenix	181 50
Western	153 87
British America	99 00
Norwich Union	86 00
Northern	18 40
Queen City	12 20
Imperial	4 00
	<hr/>
Total of Item No. 6	\$776 91

APPENDIX G.

Statement in detail for Printing, Advertising, Stationery, School Supplies, Prize Books, Apparatus, &c., as given in one sum in Item No. 7, in General Statement.

Chas. Roddy, Printing Minutes, Reports, Posters, Circulars, Examination Papers, &c.....	\$532 15
James Bain & Son, Prize Books	413 50
" " Kindergarten Supplies	110 00
" " General Supplies, Stationery, &c.....	809 49
Rice Lewis & Son, Bell for Rose Avenue School and Hardware Supplies	78 56
J. M. Mande, Ink for Schools.....	92 51
E. B. Shuttleworth, Ink for Schools, 1883	193 10
Thos. Pells, Wood Boxes, &c.....	88 71
Alexander, Clare & Cable, Certificates of Honor	130 00
Globe, Advertising.....	54 50
Mail, "	54 50
Telegram, "	34 00
News, "	19 00
World, "	16 00
Sentinel, "	4 00
Canadian Window Shade Co., Blinds for Schools	171 73
H. A. Nelson & Son, Pails	27 10
Muckle Bros., Tin Cups	18 75
S. R. Windrum, Repairing and Regulating Clocks	30 50
C. R. Woodland, Printograms and Electric Pen Supplies	30 10
Jas. Campbell & Co., School Supplies	73 95
H. L. Fairbrother & Co., Hose	33 50
R. Gutthrey, Flowers and Shrubs	27 00
J. W. Oram, Supplies	42 39
Martin & Harniman, Cupboard, Repairing Furniture, &c.....	18 64
Mason & Rich, Rent for Piano	16 50
Map and School Supply Co., Compasses	17 00
Gutta Percha & Rubber Manufacturing Co., Hose, &c.....	10 10
Brown Bros., Blotting Pads	10 80
J. Young, Bibles.....	7 20
T. L. Hicks, Gong for Wellesley School	12 50
F. W. Unit, School Hat Hooks and Supplies....	24 94
P. Paterson & Son, Supplies	9 49
W. Baillie, Cupboards	11 41
W. Briscoe, Wheelbarrows, Pokers, &c.....	13 00
R. Robinson, Oxalic Acid.....	13 50
J. Goodwin, Paper Files	18 25
<i>Carried forward</i>	\$3,263 37

FINANCIAL STATEMENTS.

21

<i>Brought Forward</i>	\$3,263 37
Wheeler & Bain, Grate	6 00
J. Foster, Repairing Globes	4 50
Inspecting and Measuring Wood	15 25
J. Dobson, Blank Books, \$4.40; Lyon & Co., Pens, \$2.....	6 40
Rose Publishing Co., Memorial Volume, \$6; M. Maher, Reference Work, \$2	7 00
J. Roberts, Locks, etc., \$4 85; J. Belton, Shoe Pegs, \$2.25	7 10
E. Thompson, Stationery, \$4; J. H. Holmes, Stationery, \$3..	7 00
American Express Co., \$3.50; J. R. Barron, Supplies, \$1.43 ..	4 93
R. Simpson, Cover for Banner, \$1.75; Repairs to Lawn Mowers, \$3	4 75
Total of Item No. 7.....	\$3,326 30

APPENDIX H.

Statement of Expenditure on Night Schools paid during 1884, as given in one sum in Item No. 8, in General Statement.

Salaries of Teachers	\$1,417 25
Salaries of Caretakers	172 00
Gas Account	46 08
James Bain & Son, Prize Books	51 95
John Sloan, Night School Supplies	7 89
H. Jackman & Co., Bill Posting	9 00
Total of Item No. 8	\$1,703 67

APPENDIX I.

Statement in detail of Miscellaneous Expenditure, as given in one sum in Item No. 9, in Annual General Statement.

Trustees' Election—Returning Officers' Fees, Polling Booths, &c., 1884	\$305 00
Trustee's Election—Returning Officers' Fees, Polling Booths, &c., 1885	334 00
W. B. McMurrich, Solicitor's Fees	485 82
Carried forward	\$1,124 82

Brought forward	\$1,124 82
J. L. Hughes, Fees as Examiner, Collegiate Institute	100 00
Expenses of Semi-Centennial Celebration—Hack Hire, &c....	66 75
E. W. Schuch, Services as Musical Instructor	150 00
R. J. Hovenden Banner	87 50
W. C. Morrison, Badges	12 40
Rice Lewis, Flags	14 76
Mrs. Woods, Rent of House for School Purposes on Hamilton st.	93 25
R. Rattledge " " Bolton St..	25 00
Bell Telephone Company	50 00
J. G. Owen, Engrossing Resolution to Mr. E. Galley	25 00
Miss Shaw, " Ald. Piper	20 00
H. Pellatt, Rent of Horticultural Pavilion	25 00
Mason, Risch & Co., Rent of Piano for Kindergarten	35 00
J. Newell, Cab Hire for Jesse Ketchum Prize Distribution..	21 00
Cab Hire for Committees, &c.	44 75
Expressage	33 60
R. McCausland, Bonus on Retiring from the Service	237 50
W. C. Wilkinson, Bonus for Extra Service	100 00
Bonuses to Teachers in Wards of St. Matthew and St. Mark	225 00
Bonus to Caretaker of Mabel Street School	18 00
Gas Account for Board Room and Offices	8 80
Inspector's and Secretary's P. O. Boxes	8 00
Inspector's Postage, \$18.33; Secretary's Postage, \$27.25.....	45 58
Street Car Tickets for Drill Instructor and Messenger	15 00
T. McMullen, Oilcloth, \$6.00; City Directory, \$3.00	9 00
H. Keeley, Sundry Supplies, Mabel Street School	6 50
A. Muir, Preparing Report of late Brockton School Board	5 00
H. Jackman & Co., Bill Posting	4 50
Total of Item No. 9	\$2,611 71

APPENDIX J.

Statement of Expenditure for Heating Apparatus, Stoves, Pipes, Tin Screens, Zinc, and General Tinsmith Work at all the Schools during 1884, as given in one sum in Item No. 10, in General Statement.

J. Hatch & Son, Ruttan Stoves for New School Rooms, and Stove Pipes, Zinc, &c.; also Re-placing old Pipes, Stoves and General Tinsmith and Stove Work at all the Schools.	\$1,257 12
G. H. Brown, Furnaces for Hope Street School	415 00
F. W. Unit, General Tinsmith Work at Sundry Schools.....	189 13
J. F. Ross & Co., New Stoves, Pipes, &c., Hope Street School	170 22
H. J. Wood, Stoves, Pipes, &c., at Sundry Schools	50 76
Muckle Bros., Tinsmith Work " "	26 50
Total of Item No. 10	\$2,108 72

SECRETARY-TREASURER'S VALUATION OF SCHOOL PROPERTY.

Secretary-Treasurer's Statement of the Estimated Value of the School Premises, Sites, Buildings, Furniture, &c., belonging to the Public School Board of the City of Toronto, on the 31st December, 1884.

SCHOOLS.	SITES.	BUILDINGS,	TOTAL.
Park	\$3,000	\$ 9,000	\$12,000
Parliament Street	5,700	10,500	16,200
Winchester "	6,000	13,000	19,000
Rose Avenue	6,500	9,000	15,500
Dufferin	8,000	21,000	29,000
George Street	3,500	10,500	14,000
Palace "	1,500	6,000	7,500
Eastern Avenue	1,000	3,000	4,000
Victoria Street	6,000	19,000	25,000
Church "	5,000	14,000	19,000
John "	4,000	15,000	19,000
York "	5,500	14,500	20,000
Niagara "	5,000	17,000	22,000
Brant "	3,000	8,500	11,500
Lonsia "	3,500	12,500	16,000
Elizabeth "	3,000	10,000	13,000
Wellesley "	10,000	33,000	43,000
Phoebe Street	4,000	16,000	20,000
Ryerson	7,000	23,000	30,000
Bathurst Street	4,000	12,500	16,500
Borden "	2,000	13,000	15,000
Givins' "	2,200	14,000	16,200
Hope "	2,500	16,000	18,500
Jesse Ketchum	6,300	21,500	27,800
Cottingham Street	2,000	5,000	7,000
Dewson Street	2,500	8,000	10,500
Mabel "	2,000	3,000	5,000
Howard "	500	900	1,400
Bolton "	2,000	3,000	5,000
Leslie "	200	1,200	1,400
Morse "	1,600	1,600
	\$119,000	\$362,600	\$481,600
Furniture, School, Apparatus, &c., say			30,000
Total Estimated Value of School Property			\$511,600

Certified,

W. C. WILKINSON,

Secretary-Treasurer, P. S. B.

Toronto, Jan. 31st, 1885.