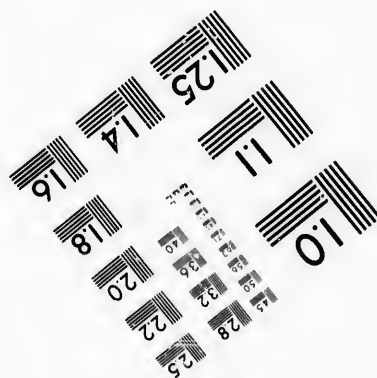
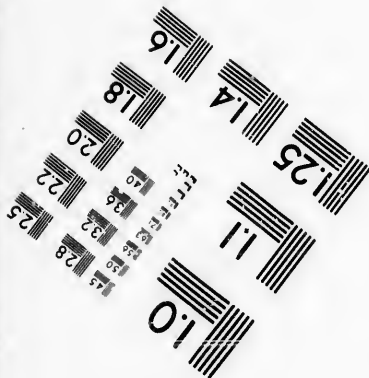
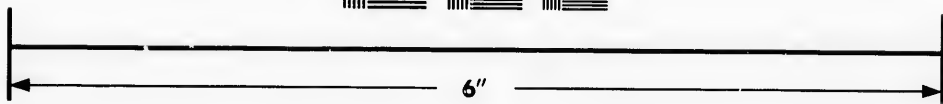
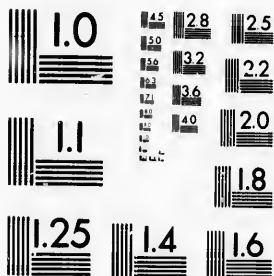


**IMAGE EVALUATION  
TEST TARGET (MT-3)**



**Photographic  
Sciences  
Corporation**

23 WEST MAIN STREET  
WEBSTER, N.Y. 14580  
(716) 872-4503



**CIHM/ICMH  
Microfiche  
Series.**

**CIHM/ICMH  
Collection de  
microfiches.**



**Canadian Institute for Historical Microreproductions / Institut canadien de microreproductions historiques**



**© 1986**

Technical and Bibliographic Notes/ Notes techniques et bibliographiques

The Institute has attempted to obtain the best original copy available for filming. Features of this copy which may be bibliographically unique, which may alter any of the images in the reproduction, or which may significantly change the usual method of filming, are checked below.

L'Institut a microfilmé le meilleur exemplaire qu'il lui a été possible de se procurer. Les détails de cet exemplaire qui sont peut-être uniques du point de vue bibliographique, qui peuvent modifier une image reproduite, ou qui peuvent exiger une modification dans la méthode normale de filmage sont indiqués ci-dessous.

- Coloured covers/  
Couverture de couleur
- Covers damaged/  
Couverture endommagée
- Covers restored and/or laminated/  
Couverture restaurée et/ou pelliculée
- Cover title missing/  
Le titre de couverture manque
- Coloured maps/  
Cartes géographiques en couleur
- Coloured ink (i.e. other than blue or black)/  
Encre de couleur (i.e. autre que bleue ou noire)
- Coloured plates and/or illustrations/  
Planches et/ou illustrations en couleur
- Bound with other material/  
Relié avec d'autres documents
- Tight binding may cause shadows or distortion along interior margin/  
La reliure serrée peut causer de l'ombre ou de la distorsion le long de la marge intérieure
- Blank leaves added during restoration may appear within the text. Whenever possible, these have been omitted from filming/  
Il se peut que certaines pages blanches ajoutées lors d'une restauration apparaissent dans le texte, mais, lorsque cela était possible, ces pages n'ont pas été filmées.
- Additional comments: [Printed ephemera] [4] p.  
Commentaires supplémentaires:

- Coloured pages/  
Pages de couleur
- Pages damaged/  
Pages endommagées
- Pages restored and/or laminated/  
Pages restaurées et/ou pelliculées
- Pages discoloured, stained or foxed/  
Pages décolorées, tachetées ou piquées
- Pages detached/  
Pages détachées
- Showthrough/  
Transparence
- Quality of print varies/  
Qualité inégale de l'impression
- Includes supplementary material/  
Comprend du matériel supplémentaire
- Only edition available/  
Seule édition disponible
- Pages wholly or partially obscured by errata slips, tissues, etc., have been refilmed to ensure the best possible image/  
Les pages totalement ou partiellement obscurcies par un feuillet d'errata, une pelure, etc., ont été filmées à nouveau de façon à obtenir la meilleure image possible.

This item is filmed at the reduction ratio checked below/  
Ce document est filmé au taux de réduction indiqué ci-dessous.

10X	12X	14X	16X	18X	20X	22X	24X	26X	28X	30X	32X
								✓			

The copy filmed here has been reproduced thanks to the generosity of:

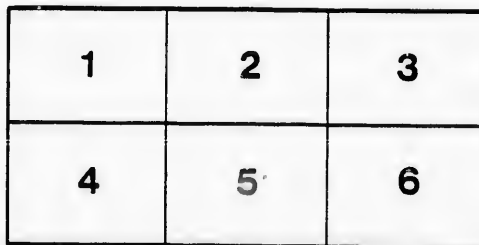
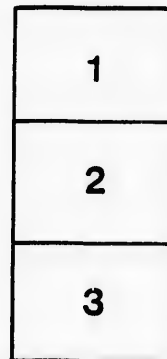
D. B. Weldon Library  
University of Western Ontario  
(Regional History Room)

The images appearing here are the best quality possible considering the condition and legibility of the original copy and in keeping with the filming contract specifications.

Original copies in printed paper covers are filmed beginning with the front cover and ending on the last page with a printed or illustrated impression, or the back cover when appropriate. All other original copies are filmed beginning on the first page with a printed or illustrated impression, and ending on the last page with a printed or illustrated impression.

The last recorded frame on each microfiche shall contain the symbol  $\rightarrow$  (meaning "CONTINUED"), or the symbol  $\nabla$  (meaning "END"), whichever applies.

Maps, plates, charts, etc., may be filmed at different reduction ratios. Those too large to be entirely included in one exposure are filmed beginning in the upper left hand corner, left to right and top to bottom, as many frames as required. The following diagrams illustrate the method:



L'exemplaire filmé fut reproduit grâce à la générosité de:

D. B. Weldon Library  
University of Western Ontario  
(Regional History Room)

Les images suivantes ont été reproduites avec le plus grand soin, compte tenu de la condition et de la netteté de l'exemplaire filmé, et en conformité avec les conditions du contrat de filmage.

Les exemplaires originaux dont la couverture en papier est imprimée sont filmés en commençant par le premier plat et en terminant soit par la dernière page qui comporte une empreinte d'impression ou d'illustration, soit par le second plat, selon le cas. Tous les autres exemplaires originaux sont filmés en commençant par la première page qui comporte une empreinte d'impression ou d'illustration et en terminant par la dernière page qui comporte une telle empreinte.

Un des symboles suivants apparaîtra sur la dernière image de chaque microfiche, selon le cas: le symbole  $\rightarrow$  signifie "A SUIVRE", le symbole  $\nabla$  signifie "FIN".

Les cartes, planches, tableaux, etc., peuvent être filmés à des taux de réduction différents. Lorsque le document est trop grand pour être reproduit en un seul cliché, il est filmé à partir de l'angle supérieur gauche, de gauche à droite, et de haut en bas, en prenant la nombre d'images nécessaire. Les diagrammes suivants illustrent la méthode.

LONDON P.R. & LITHO CO.

MICHIGAN, OHIO  
CANADIAN CIRCUIT

EIGHTEEN  
THEATRES

CLEVELAND, CINCINNATI, BUFFALO,  
DETROIT, TORONTO,  
TOLEDO, LONDON, HAMILTON,  
WOODSTOCK, SAGINAW,  
GRAND RAPIDS, BAY CITY AND  
JACKSON.



C. J. WHITNEY. A. E. ROOTE. ONTARIO.  
LESSEE. MANAGER.



W. SMITH.

E. HOLLAND.

W. S. PARTRIDGE.

**SMITH & BROS.**

THE  
LEADING  
SANITARY  
PLUMBERS  
AND  
HEATING  
ENGINEERS  
OF  
WESTERN  
ONTARIO.

376  
RICHMOND STREET,

**LONDON.**

OPPOSITE GRAND OPERA HOUSE BUILDING.

A full stock of Supplies always on hand.

TELEPHONE 638.

LADIES! THE ONLY WAY TO GET HELP IS THROUGH THE "FREE PRESS" WANT COLUMN.



**Parisian  
Steam  
Laundry**

73 & 75 DUNDAS STREET.

BRANCH OFFICES:

226 Dundas St. 752 Waterloo. 410 Hamilton Rd.  
280 " " 572 Pall Mall. 241 Wellington.  
310 " " 389 Richmond. 338 Ridout.  
322 " " " " " "

J. K. SPRY, Manager.

**HUESTON'S  
LIVERY,  
Goupe & Cab Stables**  
WELLINGTON STREET.

Finest Horses and Carriages in the City.  
OPEN DAY AND NIGHT. TELEPHONE 441.

**ROBT. HUESTON,**  
Proprietor.

**H. McKENNA,**  
—FOR—  
**Choice Cigars, Tobaccos**  
AND PIPES.

ALWAYS OPEN .....  
..... AFTER THE OPERA.

225 DUNDAS STREET.

**FURS!**  
**FURSI + FURSI**  
TRY  
**RIVARD**  
For Ladies' and Gents'  
: FINE :- FURS :  
Best Assortment in the City.



London's Fashionable Hatter  
and Furrier,  
400 RICHMOND-ST.

**WILLIAMS' Pianos** CANADA'S FAVORITE

Cannot be excelled for touch, singing quality, delicacy and great power of tone, with highest excellence of workmanship.

ALL THE LATEST VOCAL AND INSTRUMENTAL MUSIC RECEIVED AS PUBLISHED.

Musical Instruments of all kinds, Strings and Fittings  
AT LOWEST PRICES.

**R. S. WILLIAMS & SON,** 171 DUNDAS STREET,  
LONDON, ONT.  
J. A. CRODEN, Manager.

.. Play and Players ..

« PROGRAMME »

**Thursday, Oct. 19th.**  
1893

THE PERFORMANCE WILL COMMENCE WITH A COMEDIETTA,  
IN ONE ACT, ENTITLED

**CHUMS**

By THOMAS FROST,  
One of the New York Herald Prize Plays selected  
by Messrs. A. M. Palmer, Daniel Frohman,  
Augustus Thomas and William Seymour.

(The title of the play is used by the kind permission of Dr. Frank A. Harris, of Boston.)

CAST - OF - CHARACTERS

Lieut. Jack Bandle, U.S.N. ... Mr. Emette C. King  
Mr. Patterby, a stock-broker. ... Mr. Seymour G. Hess  
Mrs. Patterby ..... Miss Maud White  
Lelia Sterling ..... Miss Lizetta LeBaron  
Scene—Patterby's House



(Programme continued on next page.)

**FITZGERALD, SCANDRETT & CO.**

169 Dundas Street.

—IMPORTERS OF—

English Biscuits, Fine Sardines,  
Olives, Pickies,

—AND ALL LINES OF—

Staple and Fancy Groceries.

ESTABLISHED 1831.

**H. DAVIS & SON,  
WATCHMAKERS  
AND  
JEWELLERS**

DEALERS IN

Watches, Clocks, Jewellery, Spectacles,  
Silver Plated Ware, &c.

170 DUNDAS ST., LONDON, ONT.

**W. T. STRONG**

Dispensing  
Chemist,

184 Dundas Street,  
LONDON, - ONTARIO.

**BROWN'S**

**Central Shoe Store,**

145 DUNDAS ST.

Our fall stock of 1893 surpasses in style, finish and material anything heretofore attempted in the shoe line in London. We handle all the popular and standard styles; are noted for keeping the most satisfactory goods known to the modern buyer, and have superior advantages in procuring the latest American novelties in shoes. We buy no inferior goods; all our stock is of the highest grade and quality, and we guarantee the best results. We carry a complete assortment from the leading manufacturers in the United States and Canada. We can and will sell first-class Fine Footwear cheaper than any other house in the west; and we have a very large new stock of Men's, Youths' and Children's shoes in lines in which we cannot be undersold. We have just received a large assortment of the most handsome and artistic designs in Ladies' and Gents' Dress Shoes, and a beautiful selection of Overgaiters in all the leading colors. Our speciality in Ladies' Evening Shoes of the latest New York shades is certainly charming, and must be seen to be appreciated. Our new lines of Baby Moccasins are really elegant. Mothers should not fail to see them.



See our Windows . .  
Inspect our Goods . .  
Ascertain our Prices

And we are sure you will be agreeably surprised.

**John S. Brown,**  
TELEPHONE 881.

IF YOU WANT THE BEST, TAKE THE "FREE PRESS." ALL THE NEWS!

—GO TO—  
**SOUTHCOTT'S**

—FOR YOUR—  
**Overcoating**  
—OR—  
**FALL & SUITING**  
AND GET SATISFACTION AT  
CLOSE PRICES.  
**361 RICHMOND STREET.**

**GRAHAM BROS**


FOR  
**Fall and Winter Underclothing**  
ALL SIZES AND WEIGHTS.  
CHEAPEST STOCK IN THE CITY.  
**169 DUNDAS STREET**

**Wm. Stevely & Son,**

—THE LEADING DEALERS IN—  
**STOVES, RANGES,**  
.. AND ..  
**HOUSE FURNISHING GOODS.**  
OUR STOCK IS THE LARGEST.  
OUR PRICES THE LOWEST.  
**362 RICHMOND STREET.**  
PHONE 452.

I-I-I-I-I-I-I-I-I-I

THE LONDON PRINTING AND LITHOGRAPHING COMPANY,  
SPECIALISTS IN FREE PRESS PRINTING & LITHO. DEPARTMENTS.



OFFICE:  
"THE PRESS"  
BUILDING,  
LONDON,  
ONTARIO.

BEST WORK AT MODERATE PRICES.

**Printers**  
LITHOGRAPHERS  
and ENGRAVERS

I-I-I-I-I-I-I-I-I-I

**TEGUMSEH HOUSE**

LONDON.



Directly opposite G.T.R. depot;  
street railway past the doors;  
convenient to all the wholesale  
and retail business houses of  
city, making it the most desir-  
able hotel in the city; elevator,  
and heated throughout with  
steam.

Porter in attendance on  
arrival of all trains.

**RATES, \$2.00 AND \$2.50  
PER DAY,**

ACCORDING TO LOCATION.

No Extra Charge For Baggage.

C. W. DAVIS, PROP.

Oct. 19/193  
«Programme Continued.»

To be followed by

“**JANE**”

“QUEEN OF COMEDIES.”

A FARCICAL COMEDY IN THREE ACTS  
By HARRY NICHOLS AND W. LESTOCQ.

CAST - OF - CHARACTERS

Charles Shackleton..... Mr. Seymour G. Hess  
Mr. Kershaw..... Mr. Fer'd Hight  
William..... Mr. Robert Cotton  
Claude..... Master Haines  
Mr. Pixton..... Mr. William Henderson  
Lucy Norton..... Miss Maud White  
Mrs. Chadwick..... Miss Lizette Le Baron  
Mrs. Pixton..... Miss Alexandrienne Ramsey

— AND —

JANE..... MISS KITTY CHEATHAM

SYNOPSIS

ACT I.—Morning.  
ACT II.—Noon.  
ACT III.—Evening.

Representing Mr. Charles Frohman :

Manager..... Mr. A. L. Levi  
Stage Manager..... Mr. F. W. Strong  
Advance Agent..... Mr. Harold Cox

(Programme continued on last page.)

**McLEAN'S HARDWARE**

— FOR —

**Bissell's Carpet Sweepers.**

WE CAN SHOW YOU TWELVE DIFFERENT STYLES SAME  
AS ARE NOW DISPLAYED BY THE BISSELL COM-  
PANY AT THE WORLD'S FAIR.

CALL AND SEE THESE GOODS

— AT —

**McLEAN'S HARDWARE,**  
151 Dundas Street.

**W. T. STRONG,**

Dispensing  
Chemist,  
**184 DUNDAS ST.,**  
LONDON, ONT.

.. FOR ..

Fine Etchings....

— AND —

Engravings

— TRY —

**O. B. GRAVES,**  
222 DUNDAS STREET.

**A WORD**

TO the gentlemen patrons of  
the GRAND. You can  
have your full dress suit pressed  
and cleared up on short notice  
by sending it to the LONDON  
CLEANING AND REPAIRING  
WORKS.

We do not wash your clothes,  
but have them renovated by  
first-class tailors who repair  
them as well.

Parcels called for and deli-  
vered Office of works in the  
Arcade Barber Shop, Richmond  
Street. PHONE 981.

## Dress Patterns

We are showing select and exclusive

... DESIGNS ...

NO TWO ALIKE.

Fine Dressmaking.

TELEPHONE 611.

## Fine Dry Goods - Mantles, &c.

*A. Rolfe*

## LADIES!

Do not fail to see our  
Mantles.

in the latest cut in  
Childrens and Ladies.

A PLEASURE TO SHOW GOODS.

202 DUNDAS STREET.

## EDY BROS.

The Artistic Photographers,

—RECEIVED—

Three First Prizes

—AND—

DIPLOMA

For Finest Display of Photography

AT WESTERN FAIR, 1893.

Cabinet Photos, \$3 per doz.

**EDY BROS.,**

214 DUNDAS STREET.

The HUB 

Restaurant,

203 & 205 DUNDAS STREET.

For a NICE LUNCH after the

Opera, go to the

Hub Restaurant.

Steaks, Chops, Chicken,  
Oysters, Etc.

OPEN TILL 12.00 P.M.

J. W. MARTIN, Prop.

(Late of the Martin House)

### «Programme Concluded.»

During the evening, incidental to the stage performance, the ORCHESTRA of the Grand Opera House, under the direction of MR. FRED. L. EVANS, will perform the following selections:

OVERTURE—"Golden Harp," ..... Schaefer  
MARCH—"Berkshire," ..... Koch  
SELECTION—"Poor Jonathan," ..... Millocker  
WALTZ—"Message," ..... Csibulka  
GAVOTTE—"Sans Souci," ..... Csibulka

The above programme subject to transposition.

N. B.—The Orchestra of the Grand Opera House may be secured for engagements outside the theatre, by applying at or addressing the Box Office.

The Furniture used on stage is supplied by JOHN FERGOUSON & SON, Furniture Manufacturers.

## NEXT + ATTRACTION

SATURDAY, OCTOBER 21st.

ERIN'S NIGHTINGALE

**Clara  
Coleman**

IN THE PICTURESQUE IRISH DRAMA

**Nora Machree**

With her two genuine IRISH PONIES.

Diamonds of Irish Wit, Rubies of Song, Emeralds of Dance.

PRICES: 75c., 50c., 25c. SEATS NOW ON SALE.



"BETWEEN THE ACTS"

CONSIDER that the theatrical season and the coal-burning season start about the same time, and make a note of it that we fill all orders, large or small, in a prompt and satisfactory manner.

**CAMERON'S**

CITY OFFICE, - 421 Richmond St.  
YARD, - - Burwell St., at G. T. R.

WE call the attention of our business men to the PROGRAM as an advertising medium. It reaches the class of people whose trade you want, and the way to get that trade is to make yourself known.

**BELTON & ROOTE,**

BILL POSTING,

DISTRIBUTING

...AND...

GENERAL ADVERTISING AGENTS

Control all the Bill Boards and Dead Walls throughout the City. Population of City, 40,000.

All orders for Bill Posting, Distributing, Card Tacking, and General Advertising for Western Ontario will receive prompt attention.

OFFICE: BOX OFFICE, OPERA HOUSE.

Roses, Carnations,

Palms,

Ferns, Bulbs,

**J. GAMMAGE & SONS,**

218 Dundas Street.

INDIAN... **TEA IMPORTING HOUSE.**  
CEYLON

NEW BLENDS, DELICIOUS AND ECONOMICAL, AT MODERATE PRICES.

"English Breakfast," "Five o'clock Tea," & "Club House" Blends.  
60c. 50c. 45c.

These Blends are standard selections of choice Teas. Highly recommended to families for their fine quality and economical properties.

**S. FUGE,**

—IMPORTER OF—  
**CHOICE TEAS,** 436 Richmond St.  
TELEPHONE 858. LONDON.



