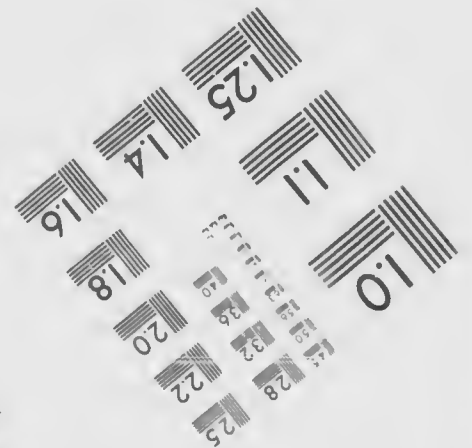
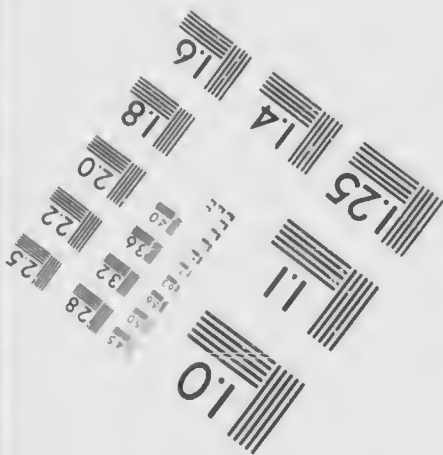
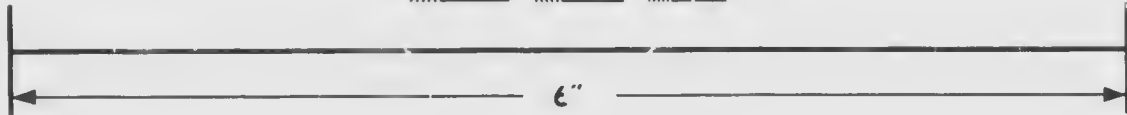
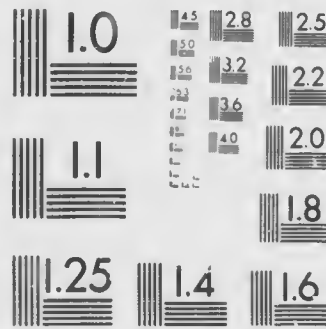


**IMAGE EVALUATION
TEST TARGET (MT-3)**



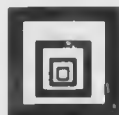
**Photographic
Sciences
Corporation**

23 WEST MAIN STREET
WEBSTER, N.Y. 14580
(716) 872-4503

25
22

**CIHM/ICMH
Microfiche
Series.**

**CIHM/ICMH
Collection de
microfiches.**



Canadian Institute for Historical Microreproductions / Institut canadien de microreproductions historiques

© 1987

Technical and Bibliographic Notes/Notes techniques et bibliographiques

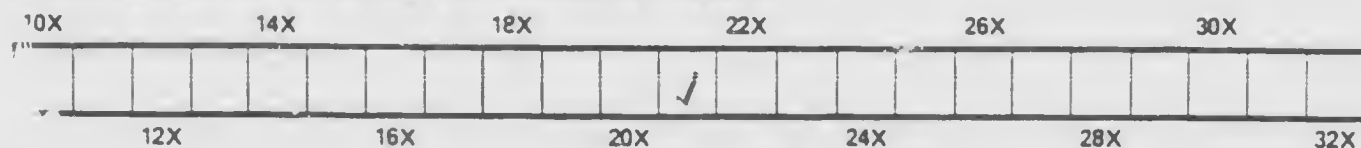
The Institute has attempted to obtain the best original copy available for filming. Features of this copy which may be bibliographically unique, which may alter any of the images in the reproduction, or which may significantly change the usual method of filming, are checked below.

L'Institut a microfilmé le meilleur exemplaire qu'il lui a été possible de se procurer. Les détails de cet exemplaire qui sont peut-être uniques du point de vue bibliographique, qui peuvent modifier une image reproduite, ou qui peuvent exiger une modification dans la méthode normale de filmage sont indiqués ci-dessous.

- Coloured covers/
Couverture de couleur
- Covers damaged/
Couverture endommagée
- Covers restored and/or laminated/
Couverture restaurée et/ou pelliculée
- Cover title missing/
Le titre de couverture manque
- Coloured maps/
Cartes géographiques en couleur
- Coloured ink (i.e. other than blue or black)/
Encre de couleur (i.e. autre que bleue ou noire)
- Coloured plates and/or illustrations/
Planches et/ou illustrations en couleur
- Bound with other material/
Relié avec d'autres documents
- Tight binding may cause shadows or distortion along interior margin/
La reliure serrée peut causer de l'ombre ou de la distorsion le long de la marge intérieure
- Blank leaves added during restoration may appear within the text. Whenever possible, these have been omitted from filming/
Il se peut que certaines pages blanches ajoutées lors d'une restauration apparaissent dans le texte, mais, lorsque cela était possible, ces pages n'ont pas été filmées.
- Additional comments: / Text in English and French.
Commentaires supplémentaires: Texte en anglais et en français.

- Coloured pages/
Pages de couleur
- Pages damaged/
Pages endommagées
- Pages restored and/or laminated/
Pages restaurées et/ou pelliculées
- Pages discoloured, stained or foxed/
Pages décolorées, tachetées ou piquées
- Pages detached/
Pages détachées
- Showthrough/
Transparence
- Quality of print varies/
Qualité inégale de l'impression
- Includes supplementary material/
Comprend du matériel supplémentaire
- Only edition available/
Seule édition disponible
- Pages wholly or partially obscured by errata slips, tissues, etc., have been refilmed to ensure the best possible image/
Les pages totalement ou partiellement obscurcies par un feuillet d'errata, une pelure, etc., ont été filmées à nouveau de façon à obtenir la meilleure image possible.

This item is filmed at the reduction ratio checked below/
Ce document est filmé au taux de réduction indiqué ci-dessous.



The copy filmed here has been reproduced thanks to the generosity of:

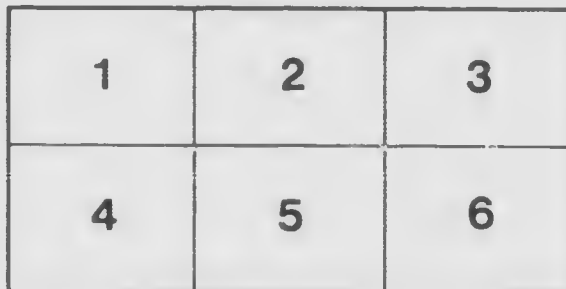
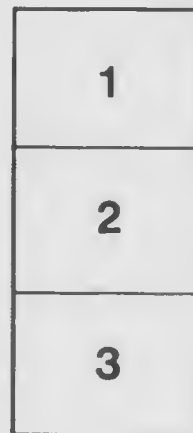
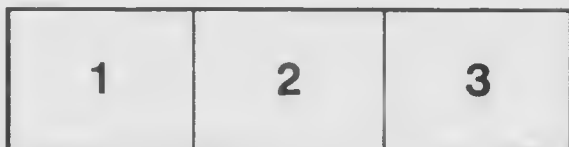
University of British Columbia Library

The images appearing here are the best quality possible considering the condition and legibility of the original copy and in keeping with the filming contract specifications.

Original copies in printed paper covers are filmed beginning with the front cover and ending on the last page with a printed or illustrated impression, or the back cover when appropriate. All other original copies are filmed beginning on the first page with a printed or illustrated impression, and ending on the last page with a printed or illustrated impression.

The last recorded frame on each microfiche shall contain the symbol \rightarrow (meaning "CONTINUED"), or the symbol ∇ (meaning "END"), whichever applies.

Maps, plates, charts, etc., may be filmed at different reduction ratios. Those too large to be entirely included in one exposure are filmed beginning in the upper left hand corner, left to right and top to bottom, as many frames as required. The following diagrams illustrate the method:



L'exemplaire filmé fut reproduit grâce à la générosité de:

University of British Columbia Library

Les images suivantes ont été reproduites avec le plus grand soin, compte tenu de la condition et de la netteté de l'exemplaire filmé, et en conformité avec les conditions du contrat de filmage.

Les exemplaires originaux dont la couverture en papier est imprimée sont filmés en commençant par le premier plat et en terminant soit par la dernière page qui comporte une empreinte d'impression ou d'illustration, soit par le second plat, selon le cas. Tous les autres exemplaires originaux sont filmés en commençant par la première page qui comporte une empreinte d'impression ou d'illustration et en terminant par la dernière page qui comporte une telle empreinte.

Un des symboles suivants apparaîtra sur la dernière image de chaque microfiche, selon le cas: le symbole \rightarrow signifie "A SUIVRE", le symbole ∇ signifie "FIN".

Les cartes, planches, tableaux, etc., peuvent être filmés à des taux de réduction différents. Lorsque le document est trop grand pour être reproduit en un seul cliché, il est filmé à partir de l'angle supérieur gauche, de gauche à droite, et de haut en bas, en prenant le nombre d'images nécessaire. Les diagrammes suivants illustrent la méthode.

Pam
21401
23

THIRD SUPPLEMENT
TO THE
ALPHABETICAL CATALOGUE
OF THE
LIBRARY
OF THE LEGISLATURE
PROVINCE OF QUEBEC

FIRST PART
COMPRISING MARINE CHARTS, BOOKS AND PAMPHLETS IN RELATION
TO NAVIGATION, ETC.



QUEBEC

1876

TROISIÈME SUPPLÉMENT

AU

CATALOGUE ALPHABÉTIQUE

DE LA

BIBLIOTHÈQUE

DE LA LÉGISLATURE

PROVINCE DE QUEBEC

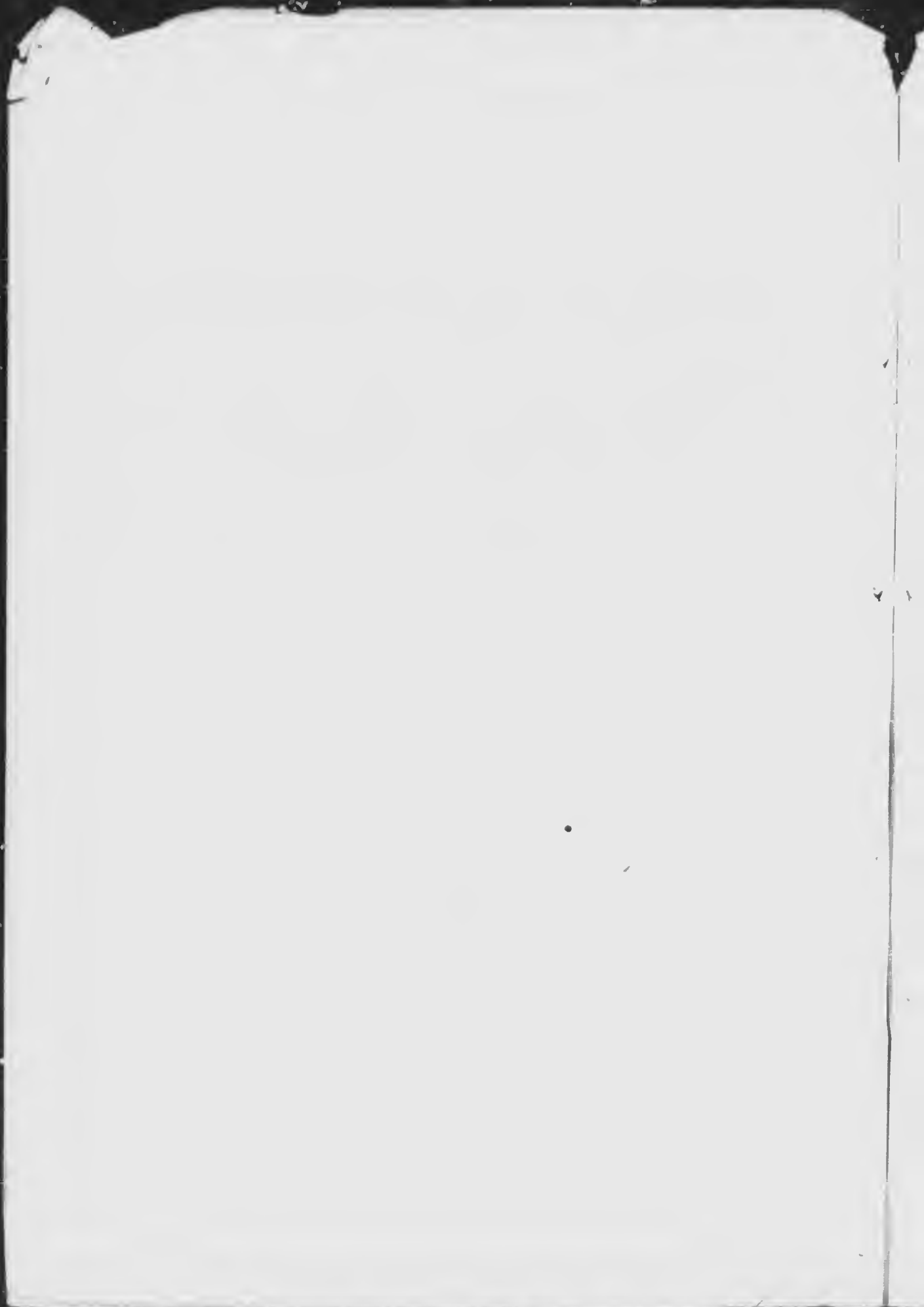
PREMIÈRE PARTIE

CONTENANT LES CARTES MARINES, LES LIVRES ET LES BROCHURES
CONCERNANT LA NAVIGATION, ETC.



QUÉBEC

1876



CARTES MARINES.—MARINE CHARTS

- Arctic Sea.** Sheet I. Baffin Bay. $\frac{D^E}{2} m=0.02$
 ———— " II. Melville Sound 1859. $\frac{D^E}{2} d=0.02$
 ———— " III. Behring Strait 1859, additions to 1855. $\frac{D^E}{2} d=0.11$
- Iceland and the Færoe Islands,** from the Danish survey, 1845
 Corrected to 1866. $D^E m=0.1$
- Labrador.** Compiled from various documents in the Hydrographic
 Office, 1871.
- Labrador and Greenland,** including the North-west passages of
 Hudson, Frobisher and Davis, with plan of Manvers
 Port, 1808-1863. $m=0.03$
- Labrador.** St. Charles Cape to Sandwich Bay. $D^E m=0.32$
 ———— Spear Point to Camp Islands, including St. Lewis sound
 and Inlet, surveyed by *Capt. Bayfield*, 1835. Additional
 soundings 1867. $\frac{D^E}{2} m=1.0$
 ———— Chateau Bay, Belle-Isle Strait. *Capt. Bayfield*, 1836. $\frac{D^E}{1} m=2.0$
 ———— Red Bay, Belle-Isle Strait. *Capt. Bayfield*, 1834. $\frac{D^E}{1} m=4.0$
- Newfoundland;** from the surveys of *Cook*, *Law* and *Bullock*, with
 additions from the surveys of *Capt. Ordebar*, etc.
 Sheet I. Northern portion. $D^E d=7.5$
 Sheet II. Southern portion. $D^E d=7.5$
- * **Carte des Bancs de Terre-Neuve**, dressée d'après les travaux de C.
 F. Lavand, de la Marine Française, par *Robiquet*. 1851,
 avec le plan de l'Île St. Pierre.
- Coast of North America,** between the Strait of Belle Island and
 Cape Cod. Compiled from the most recent surveys.
 London, 1874.

La seconde partie de ce supplément contenant les autres ouvrages ajoutés à la
 bibliothèque pendant l'année 1876, paraîtra dans le mois de septembre.

The second part of this supplement comprising the other works added to the library
 during the year 1876, will appear in the month of September.

Gulf and River St. Lawrence, between Newfoundland and Quebec.

Gulf of St. Lawrence, surveyed by Capt. Balfour and Com. DeLoraine, 1828-1857, viz:

St. Lewis sound to the Esquimaux Islands, including the

strait of Belle Isle, 1832-34. $\frac{D^1}{2} m = 0.25$

Bradore Bay and Harbour, 1834. $\frac{D^1}{8} m = 2.0$

Belles Amours Harbour, Middle Bay, &c., 1834. $\frac{D^1}{8} m = 2.0$

Roune Espérance Harbour, 1834. $\frac{D^1}{8} m = 1.0$

Esquimaux Island to Lake Island, 1834. $\frac{D^1}{2} m = 0.25$

Mistamouque Harbour, 1835. $\frac{D^E}{8} m = 2.0$

Little Meccatina Island with plans of Hope Harbour and

Nataganu River, 1834. $\frac{D^E}{2} m = 2.0$

Watagheistic Sound, Mary Island, &c., 1834. $\frac{D^1}{2} m = 1.7$

Wapitagan Harbour, 1835. $\frac{D^E}{1} m = 2.0$

Lake Island to Pashashechoo Point, 1832-34. $\frac{D^1}{2} m = 0.25$

Cacoacho Bay, 1834. $\frac{D^E}{8} m = 1.0$

Kegashka Bay, 1834. $\frac{D^E}{8} m = 2.0$

Little Natashquan Harbour, 1834. $\frac{D^1}{8} m = 1.0$

Pashashechoo Point to Magpie Bay, 1832-34. $\frac{D^1}{2} m = 0.25$

Magpie Bay to Point des Monts, 1832-33. $\frac{D^E}{2} m = 0.25$

Seven Islands Bay, with Manitou River, 1834. $\frac{D^1}{2} m = 1.0$

Cawee Islands and Egg Island, 1831. $\frac{D^E}{1} m = 1.5$

Mount Louis Bay and Magdalen River, 1830. $\frac{D^E}{8} m = 2.0$

Anticosti Island, East Cape and Bear Bay, 1830. $\frac{D^1}{8} m = \begin{cases} 0.5 \\ 1.0 \end{cases}$

“ “ Ellis Bay, 1828. $\frac{D^E}{8} m = 3.0$

“ “ S. W. Point and Salt Lake Bay, 1830.

$\frac{D^E}{8} m = 0.5$

Magdalen Island (Lieut. Collins), 1833.

—————Grand Entry Harbour, 1833. $\frac{D^E}{8} m = 3.0$

—————Amherst Harbour, 1833. $\frac{D^E}{8} m = 3.0$

Western part of Northumberland Strait, 1839. $\frac{D^E}{2} m = 0.25$

Eastern part of Northumberland Strait, 1837. $\frac{D^1}{2} m = 0.25$

Gaspé and Mal Bays, and Gaspé

Harbour and Basin, 1832. $\frac{D^E}{8} m = \begin{cases} 0.8 \\ 1.5 \end{cases}$

Carquette, Shippagan and Miscou Harbours, 1838

Chaleur Bay, with plan of Paspébiac, Dalhousie and Heron

Island, 1832. $\frac{D^1}{2} m = 0.25$

River St. Lawrence, below Quebec, surveyed by Capt. Bayfield and Com. Oshear, viz :

- Point des Monts to Bersimis River, 1827-34. $\frac{DE}{2} m = 0.5$
 St. Nicholas Harbour, 1830. $\frac{DE}{6} m = 6.0$
 Manicouagan River, 1834. $\frac{DE}{2} m = 1.0$
 Bersimis River, 1831. $\frac{DE}{6} m = 0.6$
 Bersimis River to Saguenay River, Bic and Green Islands, 1827-1834. $\frac{DE}{2} m = 0.5$
 Saguenay River, 1830. $\frac{DE}{2} m = 0.7$
 Green Island to the Pilgrims, 1827-1834. $\frac{DE}{2} m = 0.9$
 Pilgrims to Point Ouelle, 1827-1834. $\frac{DE}{2} m = 0.9$
 Point Ouelle to Seal Island including Goudre Island 1827-1834. $\frac{DE}{2} m = 1.0$
 Seal Islands to Orleans Island, 1834. $\frac{DE}{2} m = 1.0$
 North and Middle Traverse between Orleans and Crane Island enlarged plan, 1827-1834. $a m = 2.0$
 Quebec and Orleans Island, 1834. $\frac{DE}{2} m = 1.0$
 Quebec Harbour and Basin, 1859. $DE m = 3.0$

River St. Lawrence above Quebec, viz :

- Pizeau Point to Fréchet Island, 1859. $DE m = 3.0$
 Fréchet Island to Cape Santé, 1859. $DE m = 3.0$
 Cape Santé to Grondines, 1859. $DE m = 3.0$
 Grondines to Batiscan, 1859. $DE m = 3.0$
 Batiscan to Bécancour, 1859. $DE m = 3.0$
 Bécancour to Port St. Francis, 1859. $DE m = 3.0$
 Lake St. Peter, East part, 1859. $DE m = 3.0$
 ————— West part, 1859. $DE m = 3.0$
 Stone Island to Lanoraie, 1859. $DE m = 3.0$
 Lanoraie towards Contrecoeur, 1859. $DE m = 3.0$
 Contrecoeur to Repentigny, 1858. $DE m = 3.0$
 Repentigny to Long Point, 1858. $DE m = 3.0$
 Long Point to Lachine Rapids including Montreal, 1868. $DE m = 3.0$
 Montreal Harbour, 1858. $DE m = 6.0$
 Montreal to Farrens Point, 1856. $DE m = 0.55$
 Farrens Point to Kingston, 1856. $DE m = 0.55$

River St. Lawrence, Ontario Lake to the Gallop Rapids, 5 Sheets
Capt. Owen, 1818. $\frac{DE}{2} m = 1.5$

Lake Ontario and the back communication with Lake Huron,
Capt. Owen, 1817. Corrected to 1863. $DE m = 0.2$

- Toronto Harbour, *Capt. Owen*, 1817-1848. $\frac{DE}{3} m = 35$
- Lake Erie, with plans of Rondeau Harbour, Detroit River, *Lieut. Bayfield*, 1817, and United-States surveys, 1819. *o.c. m = 0.17*
- Lake and River St. Clair. *Lieut. Bayfield and Benay*, 1817. $\frac{DE}{3} m = 0.4$
- Lake Huron, from the United States coast survey, 1756-60. The Canadian coast from *Capt. Bayfield's* survey, 1822. *o.c. m = 0.18*
- Georgian Bay, *Capt. Bayfield*, 1822. $\frac{DE}{2} m = 0.2$
- Lake Superior, 3 sheets with Agate, Marquette, and Ontonagon harbours; also Pic and St. Louis Rivers. *Lieut. Bayfield*, 1823-1825. *a b c DE m = 0.21*
- Lake Michigan, from the United States Surveys. *See additions, p. 24*
- Nova Scotia. *Capt. Bayfield, Shortland, and Orlebar*, 1848-1867
- Cape Sable to Sambro Island. *Capt. Bayfield and Shortlands and Com. Orlebar*, 1867. *o.c. m = 0.20*
- Sambro Islands to Cape Canso. *Capt. Bayfield and Orlebar*, 1867. *o.c. m = 0.20*
- Baccaro Point to Ram Island, *Com. Shortland*, 1860-61. *o.c. m = 1.4*
- Ram Island to Port Metway, *Com. Shortland*, 1861-62. *o.c. m = 4.1*
- Port Metway to Lunenburg, *Capt. Shortland*, 1762-63. *a m = 4.1*
- Lunenburg to Mars Head, *Capt. Shortland*, 1864. *o.c. m = 4.1*
- Mars Head to Shut-in Island, *Capt. Bayfield*, 1853. *o.c. m = 1.2*
- Halifax Harbour, *Capt. Bayfield*, 1853. *o.c. m = 3.0*
- Shut-in Island to Pope Harbour, *Capt. Bayfield &c.*, 1854. *o.c. m = 1.2*
- Pope Head to Charles Island, *Capt. Bayfield*, 1854. *o.c. m = 4.0*
- Lope Harbour to Liscomb Harbour, *Capt. Bayfield and Orlebar*, 1855. *o.c. m = 1.2*
- Liscomb and Mary Joseph Harbours, *Capt. Bayfield*, 1855. *o.c. m = 3.0*
- Liscomb Island to Green Island, *Capt. Bayfield*, 1856. *o.c. m = 4.2*
- Green Island to Cape Canso, *Capt. Bayfield*, 1855. *o.c. m = 4.2*
- Cape Canso to Doyer Head, *Capt. Bayfield*, 1855. *o.c. m = 4.0*
- Doyle Head, with Chedabucton Bay and Madame Island. *Capt. Bayfield*, 1854. *o.c. m = 4.0*
- Cape Breton Island, 1847-57. $\frac{DE}{2} m = 0.2$
- Sydney Harbour, 1849. $\frac{DE}{2} m = 2.5$
- St. Paul Island, 1836. $\frac{DE}{4} m = 4.0$
- Sable Island. *Capt. Bayfield and Com. Shortland*, 1850. $\frac{DE}{2} m = 0.4$

- Fundy Bay, *Com. Shorthland and Capt. Owen*, 1850-1860, viz.,
 Fundy Bay, *Capt. Shorthland*, 1862. *oc. m.* 003. Sheet 1
 Piccolo Pt. to Pubnico Harbour, *Com. Shorthland*, 1855
oc. m. 14
 Yarmouth to Yarmouth, *Com. Shorthland*, 1850-53. *oc. m.* 14
 Yarmouth to Petit Passage, *Com. Shorthland*, 1855. *oc. m.* 14
 Beyer Island to Gulliver Hole, *Com. Shorthland*, 1855. *oc. m.* 14
 Gulliver Hole to St. Croix Bay, *Com. Shorthland*, 1856. *oc. m.* 14
 Quoddy Head to Lepreau Cape, *Capt. Owen*, 1848. *oc. m.* 005
 Fundy Bay—Digby Gut to the head of navigation, *Com. Shorthland*, 1860. *oc. m.* 003. Sheet 11
- North East coast of North America, Sheet 1, 2, 3. From the British Admiralty and U. S. Coast Surveys
- East coast of North America, Sheet 1, 5. From U. S. Coast survey and most recent authorities, 1870.
- Buzzard's Bay and Martha's Vineyard, from the U. S. coast surveys.
- Georges Shoal and Bank, surveyed by *Charles Wilkes*, etc., 1837.
- Portland Harbour, and Islands and Harbours adjacent, Drawn from the survey of Des Barres with addition and corrections by *L. Moody*, 1825.
- Portland Harbour, from the U. S. Coast survey, 1871.
- Boston Harbour, Massachusetts, from the U. S. Coast survey, 1861.
- Bay and Harbour of New York, from the U. S. Coast survey, 1874.
- Delaware Bay and River, from the U. S. Coast survey.
- Part of the Delaware River, continued from Frankford to Frenon
- Baltimore Harbour from the U. S. Coast Survey
- General Chart of the West India, coast of Columbia and Gulf of Mexico.
- Bahama Banks and Gulf of Florida. Sheets 1 & 2, from the most recent British and U. S. surveys.
- North Coast of the Gulf of Mexico, Sheets 1, 2. From the U. S. Coast survey and the most recent authorities, 1870.
- Gulf of Mexico, West Indies and Caribbean Sea, from the U. S. Coast Survey, Spanish and British Admiralty charts Sheets 1, 2, 3, 4, 5, 6.
- Atlantic Ocean, Magnetic Variation, *E. J. O. Evans*, 1859. *oc. d.* 001
- North Atlantic Ocean, by *A. G. Finlay*, 1868

- North Atlantic**, from Greenland to the Equator, showing currents, etc. Published by *James Inray and Son*, London, 1876.
- South Atlantic**, from Equator to 65° south latitude. Published by *James Inray and Son*, London, 1874.
- River Plate and Rivers** Parana and Uruguay, by *J. Inray and Son*, 1873-74.
- North Pacific Ocean**, (The Equator to latitude 60° N. and from longitude 60° W. to 100° E.) On three large sheets. The plans of islands and harbours are about forty in number.—*James Inray & son*.
- South Pacific Ocean**. On three large sheets. With about forty plans of islands and harbours.
- Coast of Oregon and Vancouver**, with many plans of harbours, including St. Juan de Fuca Strait, Port Victoria, etc.
- English Channel**, with plans of many harbours, from recent British and French surveys.
- St. George's Channel**, with the Bristol Channel, etc. Drawn from the Admiralty surveys by *L. Porphy*, 1867.
- Irish or St. George's and Bristol Channels**, from recent Admiralty surveys. Three sheets.
- Ireland**, West, South West and North Coasts, from recent Admiralty surveys. Three sheets.
- East Coast of England**, from Dungeness to Flamborough Head, on three sheets.
- East Coast of England and Scotland**, from Flamborough Head to Cape Wrath, on three sheets.
- North Coast of Scotland**, from Cape Wrath to Pentland Firth.
- West Coast and Islands of Scotland**, from the Mull of Cantyre to Cape Wrath and the Lewis Islands, three sheets.
- North Sea**, with a book of directions and addition showing the Coast of Norway as far as Dronthem.
- Coast of Norway and White Sea**, from recent Norwegian and Russian surveys. 2 sheets.
- Kattegat, Sound and Belts**, with plans on a large scale of the Sound and Grounds, part of the Great Belt, etc., etc.
- Baltic (the Sound) to the Gulf of Finland and Gulf of Bothnia**, with plans of harbours. Two sheets.

The Mediterranean Sea. Sheets 1, 2, 3. From British Admiralty Charts, latest surveys.

Indian and Pacific Oceans. The limits of this chart are latitudes 25° N. and 50° S., longitudes 15° E. and 178° E.

India (West coast of) from Cape Comorin to Bombay, (2 sheets.)

India (West coast of) from Bombay to Karachi, (2 sheets.)

Bay of Bengal, (West part of—, chart No. 1) from Cape Comorin to Cocanada, including Ceylon.

Bay of Bengal (North part of—, chart No. 2) between Pulicat and Bassein River.

Bay of Bengal (East coast of—, chart No. 3) between Bassein River and Penang.

East India Archipelago and China seas. 2 sheets.

North East Coast of Asia, from Islands of Japan to the Gulf and River Amur.

Australia, Tasmania and New Zealand 4 sheets.

* **Telegraph Chart of the World,** published by the Western Union Telegraph Company.

* **Telegraf Kart over Norge,** 1871.

* **Telegraph Chart of the Gulf** and lower River St. Lawrence, delineated under the direction of Hon. P. Fortin, by *L. N. Dufresne.*

Maury. Political, physical and Commercial map of the world, Mercator's projection, showing Ocean drainage and Inland Basins, prevailing winds and Ocean currents, routes for steam ships, &c.

** **Maury's Wind, Current and Thermal Charts,** viz:

Series A.

Track Chart, North Atlantic, Sheets 1, 2, 3, 4, 5, 6, 7, 8

" " South Atlantic, Sheets 1, 2, a, 4.

" " South Pacific, Sheets 5, 8, 9, 10.

" " North Pacific, Sheets 2, 3, 4, 5, 6, 7, 8, 9, 10, 11

" " Indian Ocean, Sheets 4, 5, 6, 7, 8, 9, 10, 11.

Series B.

Trade Wind Chart, Atlantic Ocean

" " Indian Ocean.

SERIES C.

- Pilot Chart North Atlantic, Sheets 1, 2
 " " South Atlantic, Sheets 1, 2
 " " Coast of Brazil, Sheet 1
 " " Cape Horn, Sheets 1, 2
 " " South Pacific, Sheets 1, 2, 3, 4, 5, 6
 " " North Pacific, Sheets 1, 3, 4, 5, 6
 " " North Indian Ocean, Sheets 1, 2 — both on one plate
 " " South Indian Ocean, Sheets 1, 2, 3.

SERIES D.

- Thermal Chart, North Atlantic, Sheets 1, 2, 3, 4, 5, 6, 7, 8
 " " South Atlantic, Sheets 1, 2, 3, 4

SERIES E.

- Storm and Rain, North Atlantic
 " " South Atlantic
 " " North Pacific

SERIES F.

- Whale Chart of the World, Sheets 1, 2, 3, 4.
 Programme Whale Chart.

LIVRES CONCERNANT LA NAVIGATION, LA MARINE
ET L'ARCHITECTURE NAVALE

• BOOKS IN RELATION TO NAVIGATION, SHIPPING
AND NAVAL ARCHITECTURE.

- Ainsley (Thomas L.) Examination guide containing full instructions for passing the Marine Board examination. 8vo. 1875.
- Examination guide, extra masters. 1 vol.
- Examiner in seamanship. 1 vol.
- Engineer's manual with supplement. 2 vol. 8vo, 1875.
- **Annuaire de la Marine** et des colonies pour 1854 et 1858. 2 vol. In-4to, *Paris*.
- Atlantic Directory.** A work on the physical geography and meteorology of the Atlantic, with sailing directions for the principal ports, and containing full particulars as to the wind and weather, currents and tides of all ports of the Atlantic, etc., by *Rosser and Murray*. 1 vol.
- Bayfield (Capt. H. W.). Sailing directions for the River and Gulf of St. Lawrence. 2nd edition. 2 vol. 8vo. *London*, 1843-1847.
- *Pilote du Golfe et du Fleuve Saint Laurent*. Traduit par A. Le Gras. 2 vol. in-8, 1863.
- Beauvalet (V.). *Navigation intérieure. Manuel à l'usage des pilotes, maritimes et agents.* In-18, *Paris*, 1846. (*Manuel Borel*.)
- Bonnefoux de Baron de) et *Paris* (Contre-Amiral). *Dictionnaire de marine à voiles et à vapeur.* 2e édition. 2 vol. gr. in-8, *Paris*.
- Bowditch (N.). *The American practical navigator, being an epitome of navigation.* 8vo, *Washington*, 1874.
- Bureau Veritas. *Repertoire général de la marine marchande; navires à voiles, navires à vapeur. General list of merchant shipping of all nations; sailing vessels, steamers.* 1875-76. 2 vol. Brussels.
- Burgh (N. P.). *Practical illustrations of modern land and marine engines.* Gr. folio, *London*, 1864.

- Burn** (Colonel). A naval and military technical dictionary, french english, and english french. 4th edition. 12mo, *London*, 1863.
- * **Caillet** (A.). Traité de navigation à l'usage des officiers de la marine militaire et de la marine du commerce. 2e édition. In-8, *Paris*, 1857.
- Callet** (François). Tables portatives de logarithmes contenant les logarithmes des nombres depuis 1 jusqu'à 108,000. In-8, *Paris*, 1871.
- Catalogue** of charts, plans, and views published by the United States Hydrographic office. 8vo, *Washington*, 1875.
- Admiralty catalogue of charts, plans, views and sailing directions. 8vo, *London*.
- Conore** (L.). De la machine à vapeur marine; mécanique pratique. In-8, *Brest*, 1853.
- Dana** (R. H.). Seaman's friend. 1 vol.
- Dassie**. L'architecture navale, contenant la manière de construire les navires, galères et chaloupes. In-4to, *Paris*, 1677.
- * **De Bon**. Les ports militaires de la France; Cherbourg. Avec un grand plan et des planches. In-8, *Paris*.
- * **Decret** sur le service à bord des bâtiments de la flotte, ministère de la marine. In-18, *Paris*, 1851.
- * **Diccionario** marítimo español, redactado por orden del Rey Nuestro Señor. 8vo, *Madrid*, 1834.
- Dupin** (le baron Charles). Essais sur l'organisation progressive de la marine et des colonies. In-8, *Paris*, 1831.
- Dupin** (Ch.). Developpements de géométrie avec des applications à la stabilité des vaisseaux, aux déblais et remblais, au défillement, à l'optique, etc. In-4to, *Paris*, 1813.
- Applications de géométrie et de mécanique à la marine, aux ponts et chaussées, etc. In-4to, *Paris*, 1822.
- Du Temple** (L.). Cours de machines à vapeur. Appareils employés pour la navigation. 2e édition. In-8, *Paris*, avec atlas in-4to.
- Engineer's** guide to the royal and mercantile navies. 18mo, 1869.
- Flags** of maritime nations. 3rd edition. 4to, *Washington*, 1873.

- **Fortin** (d'Hon. Pierre). Système de télégraphes et de sémaphores à l'usage de la marine dans le Golfe St. Laurent. Lettres, avec une carte. 24 pages in-8, *Québec*, 1876.
- System of telegraphs and semaphores for the use of the Shipping in the Gulf of St. Lawrence. Letters, with a map. 24 pages 8vo, *Quebec*, 1876.
- **Giacchetti** (Dal C. Gio.). Il pilota in Altura o sia la teorica e la pratica della navigazione. 2 vols. 8vo, *Roma*, 1855.
- Giquel** (E.). Nouveau manuel complet de navigation. In-18, *Paris*, 1861. (*Manuel Roret*.)
- Gordon** (James). Examination guide for the National marine boards. 8vo, *London*, 1857.
- Extra-examiner for the marine boards. 8vo, *London*, 1852.
- Griffin** (James). Catechism of navigation. 18mo, *London*, 1861.
- Griffiths** (J. W.). Marine and naval architecture. A treatise on the theory and practice of ship building. Illustrated with more than 50 engravings. 1 vol.
- Haveans** (the). A chart delineating the stars from 1st to the 4th magnitude, inclusive, constructed principally from the catalogue of the Royal Astronomical Society.
- **Iles de Saint-Pierre et Miquelon**. Bulletin administratif des actes du Gouvernement, 1816-1851. In-8, *Paris*, 1855.
- Imray**. Lights, tides, and magnetic variation of the world. 8vo, *London*.
- International** (Commercial) code of signals for the use of all nations. 8vo, *London*, 1875.
- Janvier**. Manuel du capitaine, du chauffeur, du constructeur de bâtimens, de machines à vapeur appliquées à la marine. In-18, *Paris*, 1846. (*Manuel Roret*.)
- Jenkins** (Com. T. A.). The barometer, thermometer, hygrometer, and atmospheric appearances at sea and on land as aid in foretelling weather. 8vo 62 pages, *Washington*, 1869.
- Jinman** (G.). Winds and their courses. 3rd edition. 8vo, *London*, 1865.
- Kerhallet** (Ch. P. de, of the French Navy). General examination of the Atlantic Ocean. Translated by R. W. Wynman. 8v, *Washington*, 1870.
- Kipping** (Robert). Mastng, m-r-making, and rigging of ships. 1 vol.
- Elements of sailmaking. 1 vol.

- La Landelle** (G. de). Le langage des marins, recherches historiques et critiques sur le vocabulaire maritime. 8vo. *Paris*, 1839.
- Labrousse** (P.). of the French Imperial Navy. Azimuth tables, for correcting compass courses and bearing; being the only true bearings corresponding to the time and place between the parallels of 61° N. and 61° S. &c. &c. The explanation of the Tables is in English, French, German and Spanish. 4 vol.
- Lambly** (John). Sailing directions for the River Saint Lawrence, from the Island of Anticosti to Quebec. 8vo. *Quebec*, 1818. With atlas 4to.
- Lescaulier** (C.). Vocabulaire des termes de marine anglais français et français anglais. In 8. *Paris*, 1800.
- Liste des phares** sur les côtes, rivières et lacs de la Confédération du Canada, le 31 décembre 1875. Département de la Marine et des Pêcheries. In-8. *Ottawa*.
- List of lights** on the coasts, rivers and lakes of the Dominion of Canada, on the 31st December, 1875. Department of Marine and Fisheries. 8vo. *Ottawa*.
- Liste des navires** inscrits sur les livres d'enregistrement de la confédération du Canada, 1873, 1874, 1875. Département de la Marine et des Pêcheries. 3 vol. in-8. *Ottawa*.
- List of vessels** on the registry books of the Dominion of Canada, 1873, 1874, 1875. Department of Marine and Fisheries. 3 vol. 8vo. *Ottawa*.
- List of lights** of North and South America, East and West Coasts. Corrected to January 1875. 8vo. *Washington*, 1875.
- List of Merchant Vessels** of the United States, with the official numbers and signal letters awarded them by the chief of the bureau of statistics. 2 vol. 8vo. *Washington*, 1875.
- McGregor's** almanac and tide tables. 1 vol.
- Magnetism of ships** (the), and the deviations of the compass. A series of papers by Poisson, G. B. Airy, A. Smith, F. J. Evans and Rumell. 8vo. *Washington*, 1867.
- Magnetism of ships**, and the deviations of the compass, comprising the three reports of the Liverpool Compass Commission, with additional papers by A. Smith and Capt. F. J. Evans. 8vo. *Washington*, 1869.
- Mam** (Thos. J.). The marine steam engine. 3th edition. 8vo. *London*, 1860.

- Main** (Thos. J.). Questions on subjects connected with the marine steam engine. 8vo, *London*, 1863.
- Manuel** universel et raisonné du canotier, par un *Loop d'eau douce*. In-18, *Paris*. (*Manuel Roret*.)
- Maury** (Lieut. F.). Explanations and sailing directions to accompany the Wind and Current Charts, approved by Commodore *C. Morris*. 7th edition. 4to, *Philadelphia*, 1855.
- The physical geography of the sea, and its meteorology. 8th edition. 8vo, *New-York*, 1871.
- Géographie physique de la mer. In 8. *Paris*.
- Mercantile navy list** and maritime directory for 1876 by A. Stoneham. 8vo, *London*, 1876.
- Merrifield** (John and Evers Henry). Navigation and Nautical Astronomy. Practical, Theoretical and Scientific.
- Missiessy** (E. Burgues). Installation des vaisseaux. In-4to, *Paris*, 1798.
- Missiessy Quies** (De). Arrimage des vaisseaux. In 4to, *Paris*, 1789.
- Nautical almanac** for 1876, published by the Admiralty. 8vo, 1876.
- Nesbitt** (Thomas F.). Direction de navigation pour l'île de Terre-Neuve et la côte du Labrador et pour le fleuve et le golfe St. Laurent. Traduit de l'anglais par *Thomas F. Nesbitt*. In-8, *Québec*, 1864.
- Newton**. Seamanship examiner. 10th ed. 18mo, *London*, 1875.
- Norie** (J. W.). Nautical tables (complete set of) containing all that is requisite, with the nautical almanach, for keeping a ship's reckoning at sea, and for ascertaining the latitude and longitude by celestial observations, &c. 4 vol.
- Nyström** (John W.). On technological education and the construction of ships and screw propellers for naval and marine engineers. 2nd edition. 12mo, *Philadelphia*, 1866.
- Pacific** (Short Notes and Sailing Directions, &c.) A pamphlet to accompany charts of the North and South Pacific. It contains a description of the winds, weather, storms, currents, &c., together with general remarks on making passages at all seasons, and a complete synopsis of the Ocean Routes, by *Bosser*.
- Papers** on the eastern and northern extensions of the Gulf Stream. From the German of Drs. Petermann, Von Fröden and Mabry. Translated by E. B. Knorr. 4to, *Washington*, 1871. Also Supplements 1, 2, 3, 4.

- Pilotage.** The charges for pilotage of the various ports of the United Kingdom. 1 vol.
- Ports, Arsenals and dockyards of France,** by *a Traveller.* 8vo, London, 1811.
- Port du Havre,** (France). Travaux d'entretien et de réparations à exécuter de 1867 à 1872. In-4to 90 pages, *Havre*, 1858.
- Portulan** des côtes de la Manche, du canal de Bristol et de la côte sud d'Irlande. Traduit des instructions anglaises du Capt. Martin White et de J. Purdy, extrait du Pilote français de Givry et complété par V. A. Monlae. In 8, *Paris*, 1855
- Reclus** (Elysée). The Ocean, atmosphere and life. Illustrated with 250 maps or figures, and 25 maps in colors. 8vo, New York, 1873.
- Reed.**—Engineer's hand book to the local marine board examination With supplement. 2 vol. 12mo, *Sunderland.*
- Seamanship. 10th edition. 12mo, *Sunderland.*
- Revue Maritime et Coloniale,** depuis sa fondation en 1861. 40 vol in 8, *Paris*
- Riddle** (Edward).—A treatise on navigation and nautical astronomy 5th edition. 8vo, *London*, 1849.
- Rosser.**—Hand-book to the ordinary and extra examinations. 1 vol.
- Nautical, logarithmic and astronomical tables. 8vo, *London* 1875.
- How to use the international code of signals. 8vo, *London*, 1871
- Stars. how to know them and how to use them. 1 vol.
- Short notes on the Winds, Weather and Currents together with general Sailing Directions, and remarks on making passages : with illustrative chart. 1 vol.
- Sailing Directions** for the East Coast of England and Scotland from Flamborough head to Pentland Firth, compiled from recent Admiralty Surveys. 8vo, *London*, 1871.
- ———— for the River Thames : the South-East Coasts of England to Beachy Head ; and the Strait of Dover. To which is added an Appendix containing the rules, regulations, and rates of pilotage, &c. 8vo, *London*, 1873.
- ———— for the West Coast and Islands of Scotland, from the Mull of Cantyre to Cape Wrath, by *James E. Ingray, F.R.G.S.* Fourth edition, revised from recent Admiralty Surveys. 8vo, *London*, 1875

- Sailing Directions** for the South, West and North Coast of Ireland, included between Carnsore point and Lough Foyle, compiled chiefly from recent surveys. 8vo, *London*, 1874.
- for the St. George's or Irish Channel Compiled from recent Admiralty Surveys. 8vo, *London*, 1873.
- for the English Channel. Part I. The South Coast of England, and general directions for the navigation of the Channel. Part II. The North Coast of France, compiled from recent surveys by James F. Murray, F. R. G. S. 8vo, *London*, 1874.
- to accompany a Chart of the North Sea. Compiled from the most recent surveys. 8vo, *London*, 1874.
- for the White Sea; Northern Coast of Norway, in the vicinity of Hammerfest; and for the Island of Spitzbergen. Compiled from Recent Surveys. 8vo, *London*, 1870.
- for the principal parts in the Bay of Bengal, with remarks upon the winds and currents; and special instructions for making passages up and down the Bay. By W. H. Rosser, and J. F. Murray, F. R. G. S. 8vo, *London*, 1874.
- Saxby** Steam and the steam engine. 8vo, *London*, 1874.
- Seaton** (W. C., late Nautical master to the Society of Merchant Venturers, Bristol, England) A manual of the examination of masters and mates. 1873. 1 vol.
- Second and enlarged edition of a manual of the examination of masters and mates. 1875. 1 vol.
- Shipbuilding**, theoretical and practical. Folio, *London*, 1866.
- Steam-Lanes** across the Atlantic, with map. 48 pages 8vo, *Washington*, 1872.
- Tide Tables** for the British and Irish ports for 1872. 8vo, *London*.
- Tredgold**. Marine engine and boilers; exemplified in numerous examples of British and American steam vessels. 3 vols. 4to, *London*.
- Turnbull** (W.). Trigonometrical surveying of a round try or a sea coast, 1 vol.
- Nautical examiner, or catechism of navigation. 18mo, 1850.
- United States Coast Survey** Report of the superintendent showing the progress of survey during the years 1852-53-54-55-56-57-58-59-60-61. 8 vols. 4to, *Washington*.

- ** **United States Coast Survey**, Catalogue of charts. 4to of 28 pages.
Washington, 1875.
- Urquhart**. The dues and charges on shipping in foreign ports. 8vo.
London, 1875.
- Vanderdecken**. The yacht sailor. A treatise on practical yachtmanship, cruising and racing. 3rd edition. 12mo, London, 1868.
- * **Vaughan** (Capt. D.). Meteorological journal and report relative to the currents, climate, and navigation of that portion of the Lower St. Lawrence forming the Strait of Belle Isle. 31 pages gr. 8vo, Quebec, 1869.
- Verdier**. Manuel de marine. 2 vol. in 18, Paris. (*Alphabet Rouge*.)
- Wilson** (F. D.)—An outline of ship building, theoretical and practical. 8vo, New York, 1873.

Les livres et les cartes marquées d'un astérisque (*) ont été données à la Bibliothèque par l'Hon. P. Fortin.

The books and charts marked with one asterisk (*) are one donation to the Library from Hon. P. Fortin.

Les cartes des vents et courants de Manby, au nombre de quatre-vingt-sept et sept volumes des rapports du lever hydrographique des côtes des États-Unis, marquées de deux astérisques (**), sont des dons à notre Bibliothèque de la part de J. E. Hilliard, ancien assistant directeur du bureau du lever hydrographique des côtes des États-Unis, Washington.

Manby's wind and current charts, eighty in number, with seven volumes of the reports of U. S. coast survey, marked with two asterisks (**), are donations to our library from J. E. Hilliard, former assistant in charge of United States coast survey office Washington.

ADDITIONS.—ADDITIONS.

N. B. Les cartes suivantes, au nombre de quarante-trois, ont été données à la Bibliothèque de la Législature, par C. B. Comstock, Maj. du génie, et Brig. genl. par brevet de l'armée des États-Unis, directeur du lever hydrographique des lacs du Nord, et du Nord Ouest. Bureau, Détroit, Michigan. Le catalogue était sous presse lorsqu'elles ont été reçues.

N. B. The following charts, forty three in number, are donations to the Library of the Legislature, from C. B. Comstock, Maj. of Engrs, and Brvt. Brig. Genl. U. S. A., in charge of the survey of the Northern and Northwestern lakes. Office, Detroit, Michigan. The catalogue had been sent to press when they were received.

Lake Michigan (North east coast of) including Grand and Little Traverse Bays and the Fox and Manitow Islands, 1863. Scale $\frac{1}{120,000}$

————— (North east end of) including Green Bay and the Straits of Mackinac, 1867. $\frac{1}{120,000}$

————— (North end of) including the Beaver Island group, 1855. $\frac{1}{120,000}$

————— (North end of) North end of Green Bay, the Islands of the entrance thereof and the N. W. shore of Lake Michigan, 1864. $\frac{1}{120,000}$

————— (South end of) Green Bay, the Islands at the entrance thereof and part of the west coast of Lake Michigan, 1864. $\frac{1}{120,000}$

Straits of Mackinac, with the approaches thereto, from Lakes Huron and Michigan and the entrance by the detour passage to St. Mary's River, 1854. $\frac{1}{120,000}$

Lake Superior.

Sheet 1. From St. Mary's River to Grand Island, 1872. $\frac{1}{400,000}$

" 2. From Grand Island to the West end of Ile Royale, 1870. $\frac{1}{400,000}$

" 3. From the West end of Ile Royale to Fond du Lac, 1873. $\frac{1}{400,000}$

————— Grand Island and its approaches, 1859. $\frac{1}{25,000}$

————— Marquette Harbour, 1859. $\frac{1}{5,000}$

————— Huron Bay and Huron Islands, 1869. $\frac{1}{30,000}$

- Lake Superior.** L'Anse, including Portage Entry and Keweenaw Bay, 1866. $\frac{1}{20,000}$
 ————— Portage lake and River with part of Keweenaw Bay, 1865. $\frac{1}{30,000}$
 ————— Ontonagan Harbour, 1859, $\frac{1}{100,000}$
 ————— Copper Harbour, 1865, $\frac{1}{10,000}$
 ————— Agathe Harbour, 1858, $\frac{1}{10,000}$
 ————— Eagle Harbour, 1855, $\frac{1}{5,000}$
 ————— Eagle River, 1859, $\frac{1}{15,000}$
 ————— Isle Royale, including north west coast of Lake Superior, 1871. $\frac{1}{120,000}$ with plans of Washington, Grace, Rock and Todd Harbours, $\frac{1}{30,000}$
 ————— West end of Fond du Lac, embracing St. Louis river to the head of navigation, 1865. $\frac{1}{32,000}$
- River St. Mary.**
 Sheet 1. From Point Iroquois to East Neebish, 1858. $\frac{1}{40,000}$
 " 2. From the entrance of the Mud Lake to the east Neebish, 1857. $\frac{1}{40,000}$
 ————— East Neebish Rapids, 1853. $\frac{1}{15,000}$
- Lake Huron** (general chart of), 1860. $\frac{1}{100,000}$
 ————— (South end of) and head of the Lake St. Clair River, $\frac{1}{120,000}$
 ————— Saginaw Bay and part of Lake Huron, 1860. $\frac{1}{120,000}$
 ————— Lower reach of Saginaw River and Bar in front, 1856. $\frac{1}{10,000}$
 ————— Thunder Bay, 1858. $\frac{1}{10,000}$
 ————— Harbours of refuge. False Presque Ile and Middle Island, 1858. $\frac{1}{10,000}$
 ————— Twas Harbour, 1856. $\frac{1}{16,000}$
- St. Clair River.** 1872. $\frac{1}{10,000}$
Lake St. Clair, 1872. $\frac{1}{50,000}$
- Detroit River** (preliminary chart of the mouth of), 1874. $\frac{1}{25,000}$
- Lake Erie** (general chart of) 1849. $\frac{1}{400,000}$
 ————— (West end of) and Detroit River, 1849. $\frac{1}{120,000}$
 ————— Maumee Bay, 1857. $\frac{1}{30,000}$
 ————— Sandusky, 1873. $\frac{1}{20,000}$
 ————— Kelley and Bass Islands, 1873. $\frac{1}{50,000}$
 ————— Buffalo Harbour and head of Niagara River, 1856. $\frac{1}{30,000}$

St. Lawrence River.

Sheet 1. From St. Regis to Chrysler Island, 1873, $\frac{1}{30,000}$

“ 2. From Strawberry Island to Isle au Galop, 1873,
 $\frac{1}{30,000}$

“ 3. From Ile au Galop to Maintland.

“ 4. From Maintland to Chippewa Point, 1876, $\frac{1}{25,000}$

Ces cartes ont été projetées d'après des levés trigonométriques, exécutés sur les ordres de divers officiers du corps des ingénieurs de l'armée des États-Unis.

All these charts have been projected from trigonometrical surveys, executed under the orders of several officers of the corps of engineers U. S. survey.

