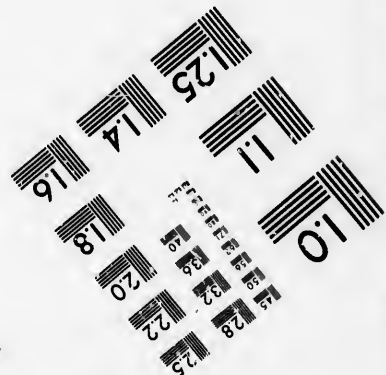
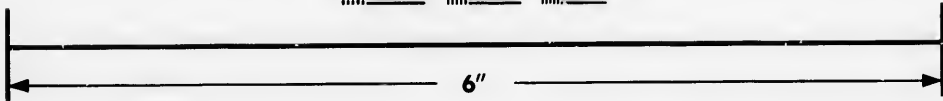
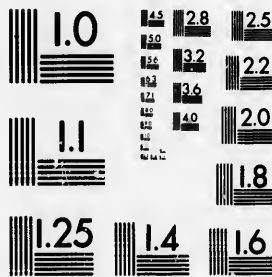


**IMAGE EVALUATION
TEST TARGET (MT-3)**



**Photographic
Sciences
Corporation**

23 WEST MAIN STREET
WEBSTER, N.Y. 14580
(716) 872-4503

2.5
2.8
3.2
3.6
4.0
4.5
5.0
5.6
6.3
7.1
8.0
9.0
10.0
11.2
12.5
14.0
16.0
18.0
20.0
22.5
25.0
28.0
32.0
36.0
40.0
45.0
50.0
56.0
63.0
71.0
80.0
90.0
100.0

**CIHM/ICMH
Microfiche
Series.**

**CIHM/ICMH
Collection de
microfiches.**



Canadian Institute for Historical Microreproductions / Institut canadien de microreproductions historiques

© 1985

11
01
05
57

Technical and Bibliographic Notes/Notes techniques et bibliographiques

The Institute has attempted to obtain the best original copy available for filming. Features of this copy which may be bibliographically unique, which may alter any of the images in the reproduction, or which may significantly change the usual method of filming, are checked below.

L'Institut a microfilmé le meilleur exemplaire qu'il lui a été possible de se procurer. Les détails de cet exemplaire qui sont peut-être uniques du point de vue bibliographique, qui peuvent modifier une image reproduite, ou qui peuvent exiger une modification dans la méthode normale de filmage sont indiqués ci-dessous.

- | | |
|---|---|
| <input type="checkbox"/> Coloured covers/
Couverture de couleur | <input type="checkbox"/> Coloured pages/
Pages de couleur |
| <input type="checkbox"/> Covers damaged/
Couverture endommagée | <input type="checkbox"/> Pages damaged/
Pages endommagées |
| <input type="checkbox"/> Covers restored and/or laminated/
Couverture restaurée et/ou pelliculée | <input type="checkbox"/> Pages restored and/or laminated/
Pages restaurées et/ou pelliculées |
| <input type="checkbox"/> Cover title missing/
Le titre de couverture manque | <input checked="" type="checkbox"/> Pages discoloured, stained or foxed/
Pages décolorées, tachetées ou piquées |
| <input type="checkbox"/> Coloured maps/
Cartes géographiques en couleur | <input type="checkbox"/> Pages detached/
Pages détachées |
| <input type="checkbox"/> Coloured ink (i.e. other than blue or black)/
Encre de couleur (i.e. autre que bleue ou noire) | <input checked="" type="checkbox"/> Showthrough/
Transparence |
| <input type="checkbox"/> Coloured plates and/or illustrations/
Planches et/ou illustrations en couleur | <input type="checkbox"/> Quality of print varies/
Qualité inégale de l'impression |
| <input type="checkbox"/> Bound with other material/
Relié avec d'autres documents | <input type="checkbox"/> Includes supplementary material/
Comprend du matériel supplémentaire |
| <input type="checkbox"/> Tight binding may cause shadows or distortion along interior margin/
La reliure serrée peut causer de l'ombre ou de la distorsion le long de la marge intérieure | <input type="checkbox"/> Only edition available/
Seule édition disponible |
| <input type="checkbox"/> Blank leaves added during restoration may appear within the text. Whenever possible, these have been omitted from filming/
Il se peut que certaines pages blanches ajoutées lors d'une restauration apparaissent dans le texte, mais, lorsque cela était possible, ces pages n'ont pas été filmées. | <input type="checkbox"/> Pages wholly or partially obscured by errata slips, tissues, etc., have been refilmed to ensure the best possible image/
Les pages totalement ou partiellement obscurcies par un feuillet d'errata, une pelure, etc., ont été filmées à nouveau de façon à obtenir la meilleure image possible. |
| <input checked="" type="checkbox"/> Additional comments: /
Commentaires supplémentaires: | [Printed ephemera] 1 sheet (verso blank) |

This item is filmed at the reduction ratio checked below/
Ce document est filmé au taux de réduction indiqué ci-dessous.

10X	14X	18X	22X	26X	30X
<input type="checkbox"/>	<input type="checkbox"/>	<input type="checkbox"/>	<input type="checkbox"/>	<input type="checkbox"/>	<input checked="" type="checkbox"/>
12X	16X	20X	24X	28X	32X

The copy filmed here has been reproduced thanks to the generosity of:

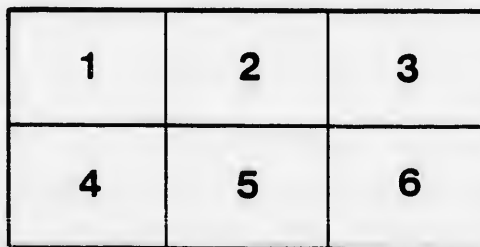
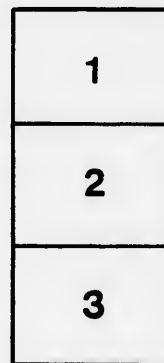
D. B. Weldon Library
University of Western Ontario
(Regional History Room)

The images appearing here are the best quality possible considering the condition and legibility of the original copy and in keeping with the filming contract specifications.

Original copies in printed paper covers are filmed beginning with the front cover and ending on the last page with a printed or illustrated impression, or the back cover when appropriate. All other original copies are filmed beginning on the first page with a printed or illustrated impression, and ending on the last page with a printed or illustrated impression.

The last recorded frame on each microfiche shall contain the symbol \rightarrow (meaning "CONTINUED"), or the symbol ∇ (meaning "END"), whichever applies.

Maps, plates, charts, etc., may be filmed at different reduction ratios. Those too large to be entirely included in one exposure are filmed beginning in the upper left hand corner, left to right and top to bottom, as many frames as required. The following diagrams illustrate the method:



L'exemplaire filmé fut reproduit grâce à la générosité de:

D. B. Weldon Library
University of Western Ontario
(Regional History Room)

Les images suivantes ont été reproduites avec le plus grand soin, compte tenu de la condition et de la netteté de l'exemplaire filmé, et en conformité avec les conditions du contrat de filmage.

Les exemplaires originaux dont la couverture en papier est imprimée sont filmés en commençant par le premier plat et en terminant soit par la dernière page qui comporte une empreinte d'impression ou d'illustration, soit par le second plat, selon le cas. Tous les autres exemplaires originaux sont filmés en commençant par la première page qui comporte une empreinte d'impression ou d'illustration et en terminant par la dernière page qui comporte une telle empreinte.

Un des symboles suivants apparaîtra sur la dernière image de chaque microfiche, selon le cas: le symbole \rightarrow signifie "A SUIVRE", le symbole ∇ signifie "FIN".

Les cartes, planches, tableaux, etc., peuvent être filmés à des taux de réduction différents. Lorsque le document est trop grand pour être reproduit en un seul cliché, il est filmé à partir de l'angle supérieur gauche, de gauche à droite, et de haut en bas, en prenant le nombre d'images nécessaire. Les diagrammes suivants illustrent la méthode.

errata
to

pelure,
on à



32X

COUNTY GRAVEL

CONTRACT

SEALED

Will be received by the undersigned, on the part of t

Until Thursday, the

At 2 o'clock. P. M., at his Office Ontario street, Stra
stant repair, the county gravel roads, of the County o

RAVEL ROADS!!

FACTORS!

TENDERS

the part of the Municipal Council of the County of Perth,

the 22nd July, inst.

street Stratford, for keeping in good, sufficient and con-
the County of Perth, excepting the portions of said roads

ON THURSDAY, THE

**At 2 o'clock. P. M., at his Office Ontario street. Stra-
stant repair, the county gravel roads, of the County of
which are in the corporations of Stratford, St. Mary's and Mitche
The roads will be laid out in sections as follows, viz:—**

HURON

*John
Huron
Council*

- Section 1. From the Wilmot line to the west limit of the allowance for road between lots 20 and 21 of
- Section 2. From west limit of the allowance for road between lots 20 and 21 of North Easthope, to th
- Section 3. From the westerly limit of the corporation of the town of Stratford to the easterly limit of th
- Section 4. From the westerly limit of the corporation of the village of Mitchell, to the east limit of the

ST. MARY'S

Section 1. From the south limit of the corporation of the town of Stratford to the easterly limit of the

ZORRA

Section 1 From the junction of the Zorra road with the St. Mary's road to the centre of the Ze

The gravel bed to be kept in repair by placing therein a sufficient quantity of good screened gravel, or broken stone, none to be large
repair, with good earth; the ruts to be kept filled up as soon as formed; thus establishing a good, even and uniform surface, on the whole width
culverts in the road, and those in concession and sideroad crossings to be also kept in good repair, and if any timbers are found in any of the
elm or black ash timber. The water tables and effluents drains are to be constantly kept open and clear. The whole of the above repairs, shal
be performed to his Satisfaction.

TENDERS must state the section tendered for, and the price per mile, per year, for the above work. Payments to be made quarterly
the work, until the expiration of each year. The Council do not bind themselves to accept the lowest tender.

2/24/58

Stratford, July 10, 1858.

EXAMINER JOB

THE 22ND JULY, 1881.

street Stratford, for keeping in good, sufficient and con-
the County of Perth, excepting the portions of said roads
's and Mitchell, for the term of Five Years from the date of Contract.

Z:

N R O A D

between lots 20 and 21 of North East Hope.
North Easthope, to the easterly limit of the corporation of the town of Stratford.
the easterly limit of the corporation of the village of Mitchell.
to the east limit of the allowance for road known as the townline between Hibbert and Tuckersmith.

MARY'S ROAD

the easterly limit of the corporation of the village of St. Mary's.

A R O A D

the centre of the Zorra Townline.
broken stone, none to be larger in either case than will pass through a three inch ring. The wings on each side of the gravel bed to be kept also in good
form surface, on the whole width of the road, preserving the original form:—See cross section annexed to contract, or at the county Engineers office. All
timbers are found in any of them to be rotten, and deemed not sufficient by the Engineer or person in charge, they are to be replaced by good sound rock
hole of the above repairs, during the aforesaid term to be under the superintendance of the county Engineer, or other person in charge, and the work to

Payments to be made quarterly on the certificate of the county Engineer or person in charge, retaining 20 per cent as security for the due fulfilment of

JOSEPH. G. KIRK,
County Engineer.

EXAMINER JOB PRESS, STRATFORD.

