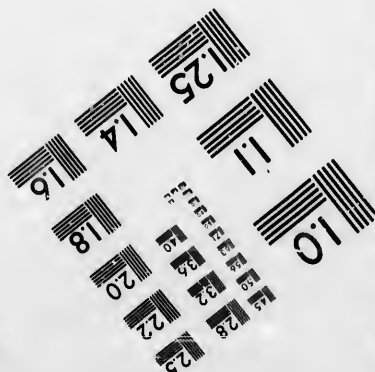
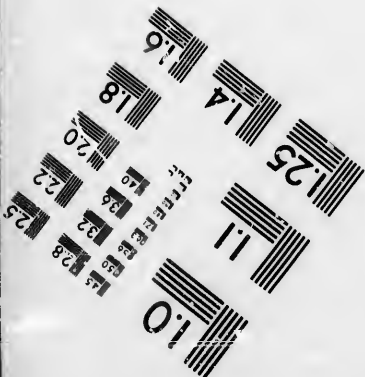
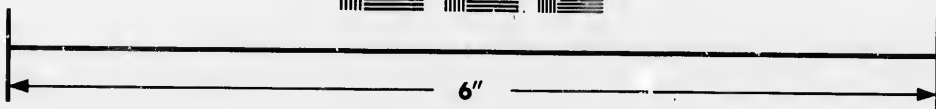
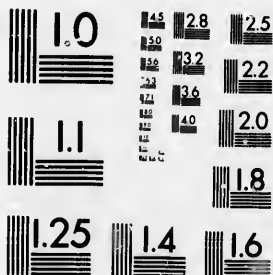


**IMAGE EVALUATION  
TEST TARGET (MT-3)**



**Photographic  
Sciences  
Corporation**

23 WEST MAIN STREET  
WEBSTER, N.Y. 14580  
(716) 872-4503

**CIHM/ICMH  
Microfiche  
Series.**

**CIHM/ICMH  
Collection de  
microfiches.**



**Canadian Institute for Historical Microreproductions / Institut canadien de microreproductions historiques**

**© 1986**

Technical and Bibliographic Notes/Notes techniques et bibliographiques

The Institute has attempted to obtain the best original copy available for filming. Features of this copy which may be bibliographically unique, which may alter any of the images in the reproduction, or which may significantly change the usual method of filming, are checked below.

L'Institut a microfilmé le meilleur exemplaire qu'il lui a été possible de se procurer. Les détails de cet exemplaire qui sont peut-être uniques du point de vue bibliographique, qui peuvent modifier une image reproduite, ou qui peuvent exiger une modification dans la méthode normale de filmage sont indiqués ci-dessous.

Coloured covers/  
Couverture de couleur

Covers damaged/  
Couverture endommagée

Covers restored and/or laminated/  
Couverture restaurée et/ou pelliculée

Cover title missing/  
Le titre de couverture manque

Coloured maps/  
Cartes géographiques en couleur

Coloured ink (i.e. other than blue or black)/  
Encre de couleur (i.e. autre que bleue ou noire)

Coloured plates and/or illustrations/  
Planches et/ou illustrations en couleur

Bound with other material/  
Relié avec d'autres documents

Tight binding may cause shadows or distortion along interior margin/  
La reliure serrée peut causer de l'ombre ou de la distorsion le long de la marge intérieure

Blank leaves added during restoration may appear within the text. Whenever possible, these have been omitted from filming/  
Il se peut que certaines pages blanches ajoutées lors d'une restauration apparaissent dans le texte, mais, lorsque cela était possible, ces pages n'ont pas été filmées.

Additional comments:/  
Commentaires supplémentaires:

Coloured pages/  
Pages de couleur

Pages damaged/  
Pages endommagées

Pages restored and/or laminated/  
Pages restaurées et/ou pelliculées

Pages discoloured, stained or foxed/  
Pages décolorées, tachetées ou piquées

Pages detached/  
Pages détachées

Showthrough/  
Transparence

Quality of print varies/  
Qualité inégale de l'impression

Includes supplementary material/  
Comprend du matériel supplémentaire

Only edition available/  
Seule édition disponible

Pages wholly or partially obscured by errata slips, tissues, etc., have been refilmed to ensure the best possible image/  
Les pages totalement ou partiellement obscurcies par un feuillet d'errata, une pelure, etc., ont été filmées à nouveau de façon à obtenir la meilleure image possible.

This item is filmed at the reduction ratio checked below/  
Ce document est filmé au taux de réduction indiqué ci-dessous.

10X	12X	14X	16X	18X	20X	22X	24X	26X	28X	30X	32X
				✓							

The copy filmed here has been reproduced thanks to the generosity of:

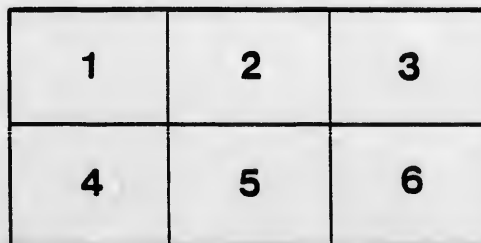
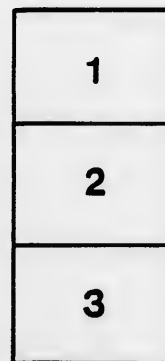
Archives of Ontario  
Toronto

The images appearing here are the best quality possible considering the condition and legibility of the original copy and in keeping with the filming contract specifications.

Original copies in printed paper covers are filmed beginning with the front cover and ending on the last page with a printed or illustrated impression, or the back cover when appropriate. All other original copies are filmed beginning on the first page with a printed or illustrated impression, and ending on the last page with a printed or illustrated impression.

The last recorded frame on each microfiche shell contains the symbol  $\rightarrow$  (meaning "CONTINUED"), or the symbol  $\nabla$  (meaning "END"), whichever applies.

Maps, plates, charts, etc., may be filmed at different reduction ratios. Those too large to be entirely included in one exposure are filmed beginning in the upper left hand corner, left to right and top to bottom, as many frames as required. The following diagrams illustrate the method:



L'exemplaire filmé fut reproduit grâce à la générosité de:

Archives of Ontario  
Toronto

Les images suivantes ont été reproduites avec le plus grand soin, compte tenu de la condition et de la netteté de l'exemplaire filmé, et en conformité avec les conditions du contrat de filmage.

Les exemplaires originaux dont la couverture en papier est imprimée sont filmés en commençant par le premier plat et en terminant soit par la dernière page qui comporte une empreinte d'impression ou d'illustration, soit par le second plat, selon le cas. Tous les autres exemplaires originaux sont filmés en commençant par la première page qui comporte une empreinte d'impression ou d'illustration et en terminant par la dernière page qui comporte une telle empreinte.

Un des symboles suivants apparaîtra sur la dernière image de chaque microfiche, selon le cas: le symbole  $\rightarrow$  signifie "A SUIVRE", le symbole  $\nabla$  signifie "FIN".

Les cartes, planches, tableaux, etc., peuvent être filmés à des taux de réduction différents. Lorsque le document est trop grand pour être reproduit en un seul cliché, il est filmé à partir de l'angle supérieur gauche, de gauche à droite, et de haut en bas, en prenant le nombre d'images nécessaire. Les diagrammes suivants illustrent la méthode.



VOTERS' LIST

FOR THE

TOWNSHIP OF WALPOLE

FOR

1877.

CALEDONIA.

PRINTED BY WM. T. SAWLE, "SACHEM" OFFICE.

V

Part

---

---

No. of  
Coll.

153  
189  
170  
171  
197  
222  
218  
219  
148  
154  
174  
21  
30  
216  
338  
494  
22  
173  
187  
212  
213  
214  
145  
176  
179  
177  
210  
241  
15  
136  
147  
134  
164  
167  
319  
337  
157  
160  
31  
32  
208  
215  
172  
200  
166  
138

---



# Voters' List 1877, Municipality of Walpole.

Part I. List of persons entitled to vote at both Municipal Elections, and Elections to the Legislative Assembly.

## POLLING SUB-DIVISION No. 1.

No. on Roll.	NAME.		Lot.	Con.	
153	Alderson, William M	16 Main Street	5	1	T
169	Banfield, John	S W part	5	2	O
170	Banfield, James	S E part	4	2	O
171	Banfield, George	S E part	4	2	O
197	Banfield, Daniel	S W quarter	3	3	O
222	Bates, William	S E quarter	8	3	O
218	Beam, Reuben W		12	3	O
219	Beam, Levi		12	3	O
148	Beaupre, Alexander	6, 7 and 8 Main st	5	5	O
154	Bourne, Charles E	V lots Erie st	5	1	O
174	Bowman, Jacob	N E part	4	1	O
21	Brown, Jacob	N E corner	12	1	O
30	Brown, Isaac	N half	12	1	O
216	Brown, John	N half	11	3	O
333	Corman, James	Central part	1	3	O
194	Deal, William	S W quarter	2	3	T
22	Delanis, Benjamin	S E part	10	4	T
173	Dils, George	S E quarter	4	2	O
187	Dosser, Robert	S E quarter	1	2	O
212	Doughty, Uriah		9	3	O
213	Doughty, John		9	3	T
214	Doughty, Richard	S three-quarters	10	3	T
145	Evans, William	N W part	7	2	O
176	Evans, Robert	N part	4	1	O
179	Evans, George	Central part	7	1	T
177	Evans, Cornelius	Central part	7	1	T
240	Evans, Edward	N half	11	3	O
241	Evans, Thomas	N half	11	3	T
15	Field, David	S W part	8	1	O
136	Field, Hiram	N W pt	8	1	O
147	Field, Colin	S E part	8	1	O
134	Fisette, Thomas	S E quarter	8	2	O
164	Fisette, Thomas	1, 2, 3 Wm st	5	1	O
167	Fisette, Isalah	Vil lot 4	5	2	O
319	Gibbs, David	N part	6	1	O
337	Gibbs, Freeman	part of N half	1	3	O
157	Hall, Geoffry B		5	5	O
160	Harris, William	4 and 5 Erie st	5	2	O
31	Hedges, William	S part	12	1	O
32	Hedges, Henry	S part	12	1	O
208	Henning, George	S W quarter	8	3	O
215	Henning, John	N half	10	2	O
172	Hewson, Alfred J	7 and 8 V lots	4	1	O
200	Hoover, Philip	N W quarter	4	2	O
163	Howey, James	9 Main street	5	1	O
185	Ivey, Thomas H	N W part	2	1	T

2] LIST OF VOTERS, FOR THE TOWNSHIP OF WALPOLE, FOR 1877.

No. on Roll.	NAME.		Lot.	Con.	
3	Jackson, Wilson	S W part	2	1	O
150	Jackson, John	Block H	5	1	O
184	Jackson, George	E half	2	2	O
186	Jackson, Henry	W half	2	2	O
202	Kindree, Asa	S three-quarters	6	3	O
203	Kindree, James	S three-quarters	6	3	T
28	Lamb, Charles		12	2	O
29	Lamb, Alfred	S E quarter	11	2	T
188	Lavigne, Joseph	N part	7	1	O
211	Lindsay, John		9	2	O
140	Livingstone, Hugh	S E corner	6	2	O
8	Low, Edward	S part	4	1	O
9	Low, Arthur	Central part	5	1	O
181	Low, Nathaniel E	N E part	3	1	O
183	McCready, James	N part	1	1	O
198	McCready, John	N W quarter	3	2	O
190	McGregor, James	N W quarter	1	2	O
10	McLane, John	S E part	3	1	O
11	McLane, George	S E part	3	1	T
143	Mead, Henry	N E corner	6	1	O
183	Mead, Edward	S W quarter	3	2	O
207	Mencke, John W	W half	4	3	O
149	Menzie, John	2, 3 Main street	5	1	O
205	Miller, Robert	E half	5	3	O
1	Moore, John	S part	1	1	O
2	Moore, Samuel	S part	1	1	O
330	Nelson, John	N part	1	3	O
73	O'Neil, Patrick	S E part	5	1	O
165	Owen, Charles	10 Main street	5	1	O
189	Porritt, William	S W quarter	1	2	O
142	Pratten, Isaac	S half	6	2	O
23	Pugsley, Samuel	W half	11	1	O
133	Pugsley, Edmund	S half	10	2	O
144	Pugsley, Sylvester	N E quarter	6	1	O
165	Pugsley, George	N E quarter	8	1	O
195	Richardson, William	S half	2	3	T
196	Richardson, John	N W quarter	2	3	T
20	Rumford, William	S W quarter	10	1	T
329	Saunders, Hugh	N W quarter	3	3	O
763	Sellers, Elias	Erie st V lots	5	1	O
199	Shreeve, James	S E quarter	3	3	O
189	Shreeve, David	S W quarter	7	2	O
193	Smith, William F	N E quarter	1	2	O
5	Snowden, William	S W part	3	1	O
6	Snowden, Thomas	N half	6	2	O
7	Snowden, John	N half	6	2	O
24	Snowden, John	N E quarter	10	1	T
25	Snowden, Robert	N E quarter	10	1	T
209	Stewart, James	N W quarter	8	2	T
156	Stone, Timothy		5	2	T
168	Thompson, Samuel	12 Main st	5	2	O
178	Thompson, Joseph	E half	3	2	O
179	Thompson, Jesse	E half	3	2	T
180	Thompson, George	E half	3	2	T
4	Townson, John	S E part	2	1	T
137	Voakes, David	S E quarter	7	2	O
138	Voakes, Miles	Central part	5	1	O
152	Wakeling, Thomas	17 Main st	5	2	O
141	Walker, Edwin	6 N D R	5	2	O
18	Walker, John		9	1	T





POLLING SUB-DIVISION No. 2.

No. on Roll.	NAME.		Lot.	Con.	
116	Armstrong, Cornelius	S W quarter	18	2	O
207	Armstrong, James	Village lot	18	2	O
250	Atkleson, Michael	S half	17	3	O
275	Awde, Francis	S W quarter	23	3	O
249	Bailey, William	Village lot 4	19	2	O
251	Baird, William	4 Main street	18	2	O
316	Bagley, John P	N half	13	3	O
125	Bartlett, Daniel		15	2	O
120	Bartlett, Thomas		15	2	O
47	Beck, John	S part	17	1	O
47	Beck, Calvin	S part	17	1	O
93	Boyer, Joseph	N part	17	1	O
237	Brctt, George	N W part	24	2	O
128	Brown, Charles	N part	20	3	O
62	Brown, William J	Centre part	14	1	O
237	Brunning, Thomas	Block C	18	1	O
45	Bryning, Edgar	Central part	16	3	O
109	Buckley, Francis	N W quarter	21	1	O
110	Buckley, Charles	N W quarter	21	2	O
237	Buckley, John	N half	21	2	O
268	Buckley, James	N half	18	2	O
269	Buckley, Robert	S half	19	2	O
238	Buckley, George	S half	19	3	O
42	Bush, Isaac	S E part	14	2	O
43	Bush, George	E E part	16	1	O
112	Butler, John	Central part	18	1	O
259	Cleveland, Cyrus	Block A	18	3	O
33	Cooper, Francis	Central part	15	1	O
66	Cooper, James	Central part	24	1	O
298	Davis, David P	N half	19	3	O
90	Deil, Levi	6, 7 Town line	24	2	O
120	Dennis, James	S part of N half	17	1	O
295	Dennis, Nelson	N E part	20	3	O
67	Dils, Adam	Central part	24	1	O
254	Dick, John Sr	4, 5 side line	18	2	O
235	Dick, John Jr	4, 5 side line	18	2	O
264	Dick, George	Vll lot 3	19	2	O
50	Doan, George	S E part	19	1	O
51	Doan, Abraham	S W part	19	1	O
121	Dochstader, John	N half	18	1	O
273	Donnelly, Brown	N half	22	2	O
39	EJsall, Charles	S part	16	1	O
40	Edsall, Edward	S E part	18	1	O
118	Edsall, Alexander	S half	17	2	O
101	Edsall, Peter	N W part	22	1	O
102	Edsall, Lyman	N W part	22	1	O
229	Edsall, Millan	N half	16	2	O
48	Evans, Ephraim	East half	18	1	O
53	Evans, James	S part	18	1	O
111	Evans, Robert	S part	18	1	O
221	Evans, George	N E quarter	13	2	O
239	Evans, Edward	S three-quarters	15	3	O
234	Evered, George	S part	18	3	O
130	Foreman, Christopher	S E quarter	13	2	O
308	Forsyth, Ezekiel	N W quarter	17	3	O
84	Gadsby, Amos	4, 5 Main Street	24	2	O
122	Gibbs, Phillip	S E quarter	16	2	O
123	Gibbs, Sylvester	S W quarter	16	2	O
245	Goodwin, Alfred	6 Main street	18	2	O
246	Goodwin, Herbert	Vll lot	18	2	O
262	Goodwin, Thomas	S W part	19	3	O



6] LIST OF VOTERS, FOR THE TOWNSHIP OF WALPOLE, FOR 1877.

No. on Roll.	NAME.		Lot.	Con.	
243	Sheldrick, James	VII lot 2	19		
224	Sherk, Jacob	W half	16	3	O
236	Sherk, George	Block D	18	3	O
258	Sherk, John	Block B	18	3	O
223	Shoup, Jacob	S three-quarters	14	3	O
224	Shoup, Oscar	S three-quarters	14	3	O
270	Silverthorn, George	N half	21	3	T
271	Silverthorn, Joseph	N half	21	3	T
274	Silverthorn, David	S E quarter	21	3	T
230	Silverthorn, Joseph	N half	22	3	O
291	Silverthorn, John	N half	22	3	O
106	Sloan, William	S quarter	22	3	T
87	Slade, George	6 Park st	19		T
104	Smelson, George	S W quarter	24	2	T
233	Smith, James	S E part	22	2	O
252	Smyth, James	2 Main st	18	2	O
253	Snider, Henry	2 Main st	18	2	O
97	Steel, John	N E part	23	3	O
98	Steel, Peter	N E part	23	1	O
113	Steel, Joseph Sr	N part	22	1	O
114	Steel, Joseph Jr	N part	18	1	O
263	Steel, Edward E	VII lot 3	19	1	O
54	Steen, Robert	S part	19	2	O
107	Stillwell, Thomas	N part	20	1	O
89	Stratton, George	N part	20	1	O
62	Swarts, Gideon	8, 9 Main st	24	2	O
103	Swarts, Darius	S E quarter	20	2	O
127	Swarts, John	N W part	20	1	O
272	Thompson, John	S half	21		O
82	Tolly, George	11, 12, 13 Main st	24	2	O
242	Urmy, George W	2 Main st	18		O
277	Urmy, John	S half	23	2	O
278	Urmy, Abraham	S half	23	3	O
96	Voakes, Robert	S W quarter	23	2	O
55	Wardell, Hiram	S E corner	20		O
124	Wardell, John	N W quarter	15	1	O
99	Waterbury, George S	S half	22	1	O
100	Waterbury, Walter R	S half	22	2	H
67	Webb, Richard	S E part	21	2	H
220	Wedrick, Michael	S half	21	1	H
265	Wedrick, John	S Church st	13	3	H
266	Wedrick, Benjamin	2 Church st	18	2	H
119	Wells, William W	N part	18	2	H
261	Wilcox, John	E Center	17	1	H
85	Winyard, Robert J	1 Main st	20	1	H
84	Wood, Robert	S E part	24	2	O
77	Zinkham, Jacob	12, 13 Main st	13	1	O
			24	2	O



8] LIST OF VOTERS, FOR THE TOWNSHIP OF WALPOLE, FOR 1877.

No. on Roll.	NAME.		Lot.	Con.	
585	Ivey, Eichard	N W quarter	5	7	O
1111	Ivey, William	2 Talbot st	4	7	O
1149	Ivey, John D	Block D	4	7	O
340	Jansen, Mark	N part	1	5	T
449	Jaques, Joseph	S E part	2	6	T
450	Jaques, Samuel	Central part	1	6	O
453	Jaques, Anthony	S W part	2	6	O
444	Jefferies, John	W part	4	5	O
443	Jefferies, George	N E part	4	5	O
444	Jefferies, Henry	N E part	4	5	O
339	Johnson, Jc an	Central part	1	4	T
1147	Jones, John		4	7	O
1148	Jones, James		4	7	C
445	Kinshalla, Martin	S part	3	6	T
341	Long, Rober	Part N half	1	5	O
451	Long, Francis	S quarter	1	6	O
557	Lynch, Terrence	E half	12	7	O
558	Lynch, James	E half	12	7	O
559	Lynch, Jonu	E half	12	7	C
439	McAlpin, John	S half	4	6	T
359	McCarthy, Charles D	S W quarter	10	5	O
452	McCawill, John	Central	1	6	T
328	McKenzie, Robert	E 1/4	4	5	O
436	McLevie, Patrick	N three-quarters	6	4	O
458	McMicken, John	S part	2	7	O
1107	McMicken, James	3, 4 V 1/4 lots	4	7	O
477	McSorley, James Sr	E half	9	6	O
478	McSorley, James Jr	E half	9	6	T
479	McSorley, Thomas	E half	9	6	T
480	McSorley, Win	E half	9	6	T
481	McSorley, Edward	E half	9	6	T
343	Marr, Jabez	S part N half	1	5	T
410	Mattice, John	S W part	4	5	O
480	Mattice, Jacob	N half	4	6	O
481	Mattice, Vernon	N half	4	6	O
348	Miller, George	E half	2	4	T
349	Muller, James	N W part	3	4	T
602	Mittler, Lewis	3, 9 Talbot st	3	7	O
336	Misner, James	S W quarter	5	4	T
357	Montague, Nicholas	S quarter	6	5	O
358	Montague, Bernard	S quarter	6	5	T
550	Nelson, Christopher	S W part	3	5	O
443	Nelson, Henry	N W part	3	5	O
583	Nicol, John	N E quarter	6	7	T
351	Parkinson, Thomas	E half	3	5	O
454	Parsons, Walter	S part	1	5	O
432	Phibbs, John	N half	9	5	O
383	Pond, Richard	S half	12	5	O
367	Pond, James	N half	12	5	O
323	Quinn, Michael	N E part	4	3	O
438	Robinson, Nathan	S half	5	6	O
604	Rodgers, William	Central part	1	7	O
605	Rodgers, Edward	N part	1	7	O
465	Ross, John O	E half	6	6	O
321	Saunders, Samuel	W half	8	4	O
325	Saunders, Joseph	S E part	5	4	O
353	Saunders, Alexander	N W part	5	4	O
354	Saunders, Thomas	N E part	5	4	O
439	Shannon, Walter O	S part N half	2	6	O
459	Shannon, Henry	N part	2	6	O
1125	Sill, Robert	2 Talbot st	4	7	O
1097	Silverthorn, Ellis	E half	8	4	O



**SUB-DIVISION ·No. 4.**

No. on Roll.	NAME.		Lot.	Con.	
296	Alward, Leonard	S W quarter	20	4	
420	Anderson, John	S half	19	6	O
384	Awde, Joseph	S half	13	6	O
385	Awde, John	S half	13	5	T
431	Bain, John	N half	14	5	O
403	Bagley, Cyrenus C	S E part	24	6	O
401	Bagley, James F	S E part	24	6	O
371	Bartlett, John	N half	14	4	T
373	Bartlett, Bryant	N E part	13	4	T
593	Best, John H	N half	20	6	O
517	Best, James A	E half	23	7	O
494	Bigger, James P		6	17	O
495	Bigger, Wellington J		6	17	O
496	Bigger, Murray C		6	17	T
402	Blackman, William	N part	24	5	T
489	Booth, James	S half	15	7	O
490	Booth, James Jr	S half	15	7	O
424	Booth, Robert	S E quarter	15	6	T
425	Booth, William	S W quarter	17	5	O
416	Boulter, Frank	N part	20	5	O
413	Boulter, John	N part	18	5	O
410	Brown, William	N W quarter	22	5	O
411	Brown, William	N half	23	5	T
307	Brown, John		17	4	O
376	Brunning, John	N E part	15	4	O
314	Bush, William	S W part	14	4	O
491	Caldwell, William	S W quarter	16	7	O
500	Caldwell, Andrew L	S half	18	7	O
369	Caldwell, James	S W quarter	14	5	O
487	Caldwell, Andrew	N half	14	6	O
401	Coulter, James	S half	24	5	T
538	Crawford, James	S W part	23	7	O
391	Daly, Charles	N E quarter	21	4	O
294	Dry, Edmund	S E quarter	20	4	O
523	Dean, George Sr	W half	21	7	O
524	Dean, George Jr	W half	21	7	O
399	Derby, George C	S half of N half	24	4	T
556	Dick, Thomas	N W corner	13	7	O
546	Dochstader, William	W half	14	7	T
486	Dougherty, Robert	N W part	13	6	O
511	Duff, John	S half	24	7	O
382	Dukestary, William	S E part	18	4	O
525	Duncan, Robert	E half	20	7	O
526	Duncan, John	E half	20	7	O
510	Easton, James	S half	24	7	T
408	Evans, John	N E quarter	23	5	O
288	Falls, William	S W part	22	4	O
502	Falls, Henry	S half	19	7	O
504	Falls, Andrew	N part	21	6	O
505	Falls, Thomas	N part	21	6	O
532	Falls, Thomas	N W quarter	19	7	O
375	Forest, Daniel	N center	15	4	T
421	Forest, James	S half	18	6	O
370	Forsyth, James	S E quarter	14	5	O
384	Forsyth, Jacob	N W quarter	20	4	O
389	Forsyth, John W	N W quarter	20	4	T
380	Forsyth, Robert	N E quarter	20	4	O
392	Forsyth, Daniel	S half	21	5	O
281	Gee, Jonathan	N quarter	24	4	O
435	Gracy, Alexander	E part	13	6	O



LIST OF VOTERS, FOR THE TOWNSHIP OF WALPOLE, FOR 1877. [11

Cbn.		No. on Roll.	NAME.		Lot.	Con.	
		233	Greenbury, John	S W quarter	21	4	O
		372	Haggerty, Daniel	N W quarter	13	4	O
		284	Hare, Solomon	N half of S half	24	2	O
4	O	414	Hemstreet, George	S E quarter	20	6	O
6	O	415	Hemstreet, Archibald	S E quarter	20	6	O
5	T	545	Histed, William	N W quarter	16	7	O
		534	Hotson, George	N W quarter	18	7	O
5	O	400	House, Alexander R	W part	23	6	O
6	O	391	Howden, Hopkinson	S half	22	5	O
6	O	506	Hyland, Daniel	S half	22	7	O
4	O	520	Hyland, Edward	N half	22	7	O
4	O	419	Jaques, Anthon v	N E quarter	20	5	O
6	O	501	Jennings, William	N quarter	18	6	O
7	O	301	Johnson, John	S half of N half	19	4	O
17	O	374	Johnson, James	S W part	15	5	O
17	T	412	Johnson, Matthew	S E part	21	6	O
5	T	413	Johnson, George	S half	22	6	O
7	O	422	Lofthouse, Christopher	N half	16	5	O
7	O	423	Lofthouse, William	S part	16	6	O
6	O	237	Long, Thomas	S E quarter	23	4	O
5	O	378	Long, David	N E quarter	16	4	O
5	O	17	McBurney, John	W half	13	7	O
5	O	426	McBurney, David	N part	15	5	O
5	T	427	McBurney, George	N part	15	5	O
4	O	497	McBurney, Thomas	S half	17	7	O
4	O	495	McBurney, David	S half	17	7	O
4	O	499	McBurney, David W	S half	17	7	O
		533	McBurney, Robert	N E part	17	7	O
7	O	559	McBurney, William	E half	13	7	O
5	O	551	McBurney, David	E half	13	7	O
5	O	552	McBurney, Thomas	E half	13	7	O
7	O	488	McCarthy, Charles	N half	15	6	O
5	O	289	McKune, James	S E quarter	21	4	O
7	O	366	McNeahy, Bernard	S half of N half	13	5	O
4	O	400	Maxwell, William	N W quarter	21	4	O
4	O	309	May, Thomas	S E quarter	16	4	O
7	O	310	May, John	S W quarter	16	4	O
4	T	280	Miller, Walter	S quarter	21	4	O
7	T	379	Mowat, John	S half	16	5	O
7	O	363	Nichol, Thomas	N W corner	13	4	O
7	O	512	Nichol, Walter	N half	24	7	O
6	O	429	Peacock, William G	S half	14	6	O
7	O	430	Peacock, Joseph	S half	14	6	O
4	O	396	Prentiss, Solomon	S W quarter	23	5	O
7	O	938	Richardson, John	S W part	20	7	O
5	T	232	Row, William	S half	23	4	O
7	O	233	Row, Dennis	S half	23	4	O
4	O	398	Schweyer, John	N half	23	4	O
7	O	397	Seeter, Jacob	S E quarter	23	5	O
6	O	494	Shuter, William	W part	16	6	O
6	O	315	Silverthorn, Wesley	S E quarter	13	4	O
7	O	545	Start, George	N W quarter	16	7	O
4	T	330	Stewart, Adam	S W part	14	5	O
6	O	333	Stewart, Benjamin	S W part	19	5	O
5	O	335	Stewart, Andrew	S E part	19	5	O
4	O	334	Stillwell, Robert	N E quarter	19	4	O
4	T	302	Swarts, Samuel	S half of N half	18	4	O
5	O	377	Thompson, John	N W quarter	10	4	O
4	O	336	Tyreil, William L	S W corner	20	5	O
		539	Ward, William	N W part	17	7	O
6	O	395	Weaver, John	N E part	22	4	O

12] LIST OF VOTERS, FOR THE TOWNSHIP OF WALPOLE, FOR 1877.

No. on Roll.	NAME.		Let.	Con.	
16	Webb, Daniel	W half	18	7	T
509	Webb, Henry	N W quarter	24	6	O
538	Weir, James	N E quarter	18	7	O
542	Widdis, William	Central part	16	7	O
493	Widdis, Richard	E half	16	7	O
423	Wiggins, Thomas	S W quarter	15	5	O
406	Wilkins, Thomas	S W quarter	24	6	O
407	Wilkins, Isaac	S W quarter	24	6	T
299	Woolman, Isaac	S half	19	4	T
300	Woolman, George	S half	19	4	T
417	Woolman, Charles	S W quarter	20	6	T



14] LIST OF VOTERS, FOR THE TOWNSHIP OF WALPOLE, FOR 1877.

No. on Roll.	NAME.	Lot	Con.		
1220	Hensman, Frederick T	23 Walpole st	4	8	O
1181	Herol, William	5, 17 E P R	4	8	O
1095	Hind, Daniel T	N half	6	10	C
1152	Hind, William	14, 15 W P R	4	8	C
1167	Hind, Joseph	W half	5	8	C
1164	Hoshal, John A	N part	4	8	T
1098	Howell, William A	7 E P R	4	8	T
1009	Howell, James B	7 E P R	4	8	T
1192	Huater, Hugh	7 W P R	4	8	T
1113	Hunter, William	12 E P R	4	8	C
990	Ionson, Anthony		7	9	O
991	Ionson, James		7	9	O
1033	Ionson, George	N W quarter	8	10	O
586	Ivey, Joseph	E half	6	8	T
587	Ivey, Thomas	E half	6	8	T
1173	Jackson, William	Y lot Monson st	4	8	O
1015	Johnson, Henry	N E quarter	2	10	O
1027	Johnson, William	S E part	2	10	O
1037	Johnson, Joseph	N half	8	9	O
1163	Kett, David	63 Church st	4	8	O
589	Lambert, William Sr	W half	6	8	O
590	Lambert, William Jr	W half	6	8	T
1204	Lambert, John	5 Talbot st	4	8	T
1206	Lambert, James	7 Talbot st	4	8	T
1129	Langrill John A.	2 W P R	4	8	C
1196	Lea, Edward	9 E P R	4	8	C
1214	Lea John C	6 W P R	4	8	C
611	Lemon, John	N part	1	8	C
1195	Love, John H	10 W P R	4	8	T
1039	McBrien, John	S quarter	6	10	O
1019	McCarter, John	N half	1	9	O
1020	McCarter, John	N half	1	9	T
1021	McCarter, Charles	N half	1	9	T
1004	McCarthy, John	N half	7	10	C
1119	McDonald, Alexander	3 Talbot st	4	8	O
1139	McDonald, John	6 W P R	4	8	O
1140	McDonald, George	6 W P R	4	8	O
1095	McDonnell, William	23 W P R	4	8	C
994	McFarland, James	Central part	4	8	T
1223	McGuire, Thomas	13, 14 E P R	8	10	C
600	McNelly, John	S E part	2	8	I <sub>n</sub>
1026	Marr, Charles	N W quarter	2	8	T
1143	Marshall, Thomas	10, 11 Peel st	3	8	C
1013	Meehan, James	N E quarter	4	8	T
1084	Meehan, William	N half of S half	6	10	C
1132	Mitchell, John M	3 W P R	6	10	C
1112	Mobio, Nelson	2 Talbot st	4	8	C
1187	Montgomery, William	19 Monson st	4	8	C
1161	Montgomery, Thomas	29 W P R	4	8	C
1144	Moore, Thomas	6 E P R	4	8	C
1145	Moore, John J	6 E P R	4	8	C
1131	Mcrow, Thomas E	3 W P R	4	8	C
1153	Niffin, William	13 W P R	4	8	C
1135	Noble, James	4 W P R	4	8	O
995	Park, Michael	N E quarter	8	10	O
1124	Park, Jacob	8 Talbot st	4	8	O
1134	Parker, William	3 W P R	4	8	O
1010	Parkinson, William	N half	4	10	O
1011	Parkinson, Joshua	N half	5	10	O
613	Pearson, William		2	9	T
614	Pearson, George		2	9	T
1150	Peterson, William	8, 9 W P R	4	8	T
1022	Phibbs, Matthew	E half	1	10	T
	Phibbs, John	E half	1	10	T

Con.		No. on Roll	NAME.		Lot.	Con.	
8	0			E half	1	10	T
8	0	1023	Phibbs, Thomas	18, 46 W P R	4	8	O
10	0	1116	Phibbs, William	7, 8 E P R	4	8	O
8	0	1179	Pollington, Henry	W half	8	10	O
8	0	1025	Pollington, William				
8	0	1165	Robinson, Charles	Central part	5	8	O
8	0	1186	Rodgers, John	4, 5 W P R	4	8	O
8	0	1187	Rodgers, Andrew	4, 5 W P R	4	8	O
8	0	1188	Rodgers, Robert	N half	8	8	O
8	0	993	Ross, James	4 E part	8	10	O
9	0	1188	Rush, Robert	21 Walpole st	4	8	O
9	0	1213	Ryser, George	6 W P R	4	8	O
10	0	1186	Secord, Osear F	8 Monson st	4	8	O
8	0	1121	Shannon, Thomas	1 W P R	4	8	O
8	0	1183	Smith, William	3 E P R	4	8	O
8	0	1184	Smith, Charles	3 E P R	4	8	O
8	0	454	Snyder, Gideon	S E part	1	8	O
10	0	455	Snyder, Silas	S E part	1	8	O
9	0	1182	Stadler, John	4, 18 W P R	4	8	O
8	0	619	Stallwood, Benjamin	S half	8	9	O
8	0	1029	Steel, Thomas	S W corner	4	10	O
8	0	1120	Steel, Daniel	6 Talbot st	4	8	O
8	0	1174	Taylor, John W	4 Monson st	4	8	O
8	0	1215	Tisdale, David	VII lots	4	8	O
8	0	992	Trimmer, Daniel	S half	7	10	O
8	0	584	Underhill, James	N E quarter	7	8	O
8	0	1191	Underhill, Sylvester	15 Peel st	4	8	O
8	0	1119	Whittaker, Robert	2 E P R	4	8	O
10	0	1031	Wilcock, Stephen	S half	5	10	O
8	0	584	Wilson, John	S E corner	4	8	O
8	0	1105	Yocom, Charles	4 Talbot st		8	O

POLLING SUB-DIVISION No. 6.

No. on Roll.	NAME.		Lot.	Con.	
1049	Addy, Hugh	S W quarter	14	10	O
1050	Addy, George	N half	14	9	O
543	Alken, John	E half	15	8	O
544	Alken, William	W half	15	8	O
1058	Alken, James	N half	18	9	O
1059	Alken, Oscar	N half	18	9	O
951	Arnot, David	N half	14	10	T
1072	Atkinson, William	S half	23	9	O
1062	Awde, Francis D	S three-quarters	21	10	O
	Awde, James W	S three-quarters	21	10	T
1045	Bain William J	S part	18	10	T
975	Brock, David	Vil lot 6	9	10	O
988	Buck, John W	S quarter	9	10	O
530	Caldwell, David, Sr	S half	19	8	O
531	Caldwell, David, Jr	S half	19	8	O
537	Caldwell, John	E half	17	8	O
514	Campbell, Hugh	E half	8	24	O
515	Campbell, Duncan	E half	8	24	O
1016	Carpenter, George	S half	12	10	T
1087	Catherwood Alexander	N half	16	8	O
959	Charter, Thomas	N half	12	10	O
1039	Christie, Alexander	S half	10	10	O
970	Collver, Warren S	1, E P R	9	10	O
971	Collver, Darius	1, E P R	9	10	O
983	Coulter, George		20	10	O
934	Coulter, John		20	10	O
987	Dell, Daniel	N half of S half	9	10	O
558	Devine, Cornelius	W half	13	8	O
554	Devine, Thomas	W half	13	8	O
555	Devine, William	W half	13	8	O
521	Dick, George	W half	22	8	O
997	Dougherty, Robert	N half	13	9	O
998	Dougherty, William	N half	13	9	O
1079	Downs, William	S E quarter	20	9	O
948	Duncan, James	N half	16	10	T
990	Elliott, Robert	N half	11	10	T
930	Eubank, Henry	N W part	21	10	O
582	Falls, Robert	E half	11	8	O
586	Falls, John	W half	11	8	O
778	Fawcett, James	Gore	12	14	O
1048	Fegan, Richard	S half	12	9	O
974	Ferguson, Joseph	1, 2, 3 E P R	9	10	O
1068	Ferraby, William	W half	22	9	O
1064	Ferraby, William	W half	22	9	O
510	Finch, Andrew	W half	17	8	O
541	Finch, William	W half	17	8	O
889	Firth, William	W half	10	10	O
1088	Fitzgerald, Richard	S half	14	9	O
1069	Fitzgerald, Patrick	W half	15	9	O
1047	Fitzgerald, Richard	N half	12	9	O
585	Fleming, Henry	S half	18	8	O
586	Fleming, Henry, Jr	S half	18	8	O
1081	Fleming, James	N half	18	8	O
1056	Ford, James	S half	18	10	O
1057	Ford, John J	S half	18	10	O
1044	Foster, John	S part	13	10	O
995	Garbut, William	E half	19	10	O
940	Garbut, William D	W half	19	10	O
548	Graham, John	W half	14	8	O
1055	Gray, William J	S E part	16	10	T
1069	Hall, Matthew	W part	23	10	O



18] LIST OF VOTERS, FOR THE TOWNSHIP OF WALPOLE, FOR 1877.

No. on Roll.	NAME.		Let.	Con.	
1007	Sullivan, Daniel	S H part	13	9	O
518	Vanderburg, John	S half	23	8	O
1051	Waldbrook, Robert	N half	15	10	O
1052	Williamson, Samuel	N half	16	9	O
1053	Williamson, Alexander	N half	16	9	O
1054	Williamson, James	N half	16	9	T
1085	Williamson, George	S half	16	9	T
1080	Williamson, James	S half	17	9	T



SUB-DIVISION No. 7.

om.  
9  
8  
0  
9  
9  
9  
9  
9  
9  
9  
T

No. on Roll.	NAME.		Lot.	Con.	
861	Abbott, Ambrose	S half	3	16	O
1008	Abbott, John	N half of S half	6	11	O
1009	Abbott, William	N half of S half	6	11	T
894	Addy, Anthony	S half	5	12	T
705.	Almas, Philip	N E quarter	2	14	T
714	Almas, William J	N W quarter	2	14	O
892	Andrews, John S	Gore	2	18	T
1007.	Andrews, Robert	S quarter	6	11	O
869	Balley, John	S half	3	13	O
855	Barber, Elisha	S W part	3	17	O
899	Barlow, James	E half	3	15	O
700	Barlow, George	E half	3	15	O
871	Barton, William	W half	3	12	O
878	Barton, Bryan	W half	2	13	O
756	Bowman, Richard	E half	5	13	O
757	Bowman, William	E half	5	13	T
765	Bowman, William H	N E quarter	7	13	T
898	Bowman, Richard E	S E quarter	4	13	T
702	Bradshaw, Seth	N half	3	14	T
624	Burke, William C	Central part	4	16	O
640	Burke, Joseph	Central part	1	17	O
628	Burke, John	N part	1	17	O
629	Burke, Richard	N part	1	17	T
1018	Carpenter, Charles	S part	1	11	O
664	Carrick, William	E part	7	16	O
896	Caughey, Samuel	S half	5	12	T
658	Churchill, James J	N part	1	10	O
713	Coutler, George H	S E quarter	4	14	T
623	Courtnage, Thomas	S W part	2	16	O
650	Courtnage, James	E half	2	16	O
892	Cowan, George	S W part	4	12	O
892	Cowan, George	S W part	4	12	T
892	Cowan, James	S W part	4	12	T
683	Craddock, John	N half	7	14	T
684	Craddock, Joseph	N half	7	14	T
685	Craddock, Thomas P	W half	5	15	T
647	Cross, William	N W part	6	16	O
721	Cundill, Matthew	N W quarter	3	13	O
1075	Dales, George	S half	7	11	O
881	Donnelly, Stewart	N half of S half	1	13	O
860	Elmore, Walter H	N W quarter	7	12	O
861	Elmore, William	N W quarter	7	12	T
695	Elmore, Roland	E half	4	15	C
701	Fewster, Christopher	W half	4	15	O
646	Finch, Andrew	N E quarter	3	16	T
890	Forrest, Samuel	S half	6	12	O
654	Foster, John	N part	1	17	O
646	Gilbert, Thomas	N E corner	4	16	O
662	Gilbert, John	S part	4	16	O
725	Gowan, Edward	N half	4	13	O
727	Gowan, William	N half	4	13	T
729	Gowan, Edward	W half	5	13	O
793	Gray, William F	N half	6	13	O
708	Haller, Andrew	E half	2	15	O
870	Halligan, Thomas	E half	3	12	O
	Halligan, James	E half	3	12	T
	Halligan, William	E half	3	12	T
	Halligan, Hugh	E half	3	12	T
872	Halligan, John	W half	3	12	T

20] LIST OF VOTERS, FOR THE TOWNSHIP OF WALPOLE, FOR 1877.

No. on Roll.	NAME.		Lot.	Con.	
874	Hammond, Thomas	E half	2	13	O
875	Hanor, William	N E quarter	2	12	O
901	Harris, William	S ha'f of N half	6	11	O
902	Harris, Thomas Sr	N quarter	6	11	O
903	Harris, Thomas Jr	N quarter	6	11	O
659	Hayes, John	N quarter	1	15	O
719	Healslip, Henry	N half	1	13	O
716	Heberly, Charles	S half	1	14	O
717	Heberly, Michael	S half	1	14	O
718	Heberly, Christian	S half	1	14	O
802	Hellyer, William H	S half	6	13	O
603	Holbrook, Jacob	S W part	7	16	O
688	Holbrook, John	E half	6	15	O
689	Holbrook, Charles	W half	6	15	O
(68)	Holbrook, Wesley	N part	7	15	O
657	Hogarth, William	N part	1	16	O
885	Irwin, William	S W quarter	1	12	O
888	Johnson, Jeremiah	S half of N half	1	11	O
889	Johnson, Daniel	S half of N half	1	11	O
644	Johnson, George	Central part	5	16	T
686	Kenner, John	N E corner	6	14	O
754	Kent, Thomas	S W quarter	5	14	O
755	Kent, Charles	S W quarter	5	14	O
722	Laram, Isaac	N E part	3	13	O
857	Leonard, Henry	N E quarter	7	12	O
858	Leonard, Henry Jr	N E quarter	7	12	T
611	Lewis, Levi	N quarter	6	15	T
612	Lewis, Charles	E half	5	16	O
876	McCarthy, Matthew	W half	2	12	O
1231	McCoy, John	S W quarter	2	14	O
882	McEwen, James	N W quarter	1	12	T
883	McEwen, Robert	N W quarter	1	12	T
694	McKeen, Robert	N E quarter	4	14	O
696	McKeen, James	N W quarter	4	14	O
697	McKeen, John	N W quarter	4	14	O
698	McKeen, William	S W quarter	4	14	O
710	Massecar, Aaron	East half	1	15	O
735	Matthews, Peter	Gore	2	18	O
712	Meally, George	W part	1	15	O
906	Meally, Patrick	N E corner	7	11	O
682	Merrill, Halsey P	S W part	7	15	T
886	Millenbacker, Benjamin	S W corner	1	12	T
643	Nicholson, Thomas	Gores	4 & 5	17	O
645	Park, John W	N W part	5	16	O
1016	Phillips, Joseph	S half	2	11	O
879	Piekel, David	N E quarter	1	12	O
715	Porritt, William	Centre part	1	15	O
893	Priest, Thomas	S half	4	11	O
652	Price, Jacob	W half	2	16	O
627	Renner, James	N W quarter	2	17	O
863	Robins, James	N half	6	12	O
864	Robins, Charles	N half	6	12	O
1006	Rodgers, David	S quarter	6	11	O
905	Ross, William	S E quarter	4	12	O
896	Roulston, James		5	11	T
897	Roulston, James E		5	11	T
898	Roulston, John W		5	11	T
900	Roulston, John	N half	5	11	T
890	Russell, James	S E quarter	2	12	O
891	Russell, Robert	S E part	2	12	O
656	Schram, Lawrence	S quarter	1	17	O
1012	Secord, John S	S quarter	1	17	O

## LIST OF VOTERS, FOR THE TOWNSHIP OF WALPOLE, FOR 1877. [2]

No. on Roll	NAME.		Lot.	Con.	
709	Secord, Ramsay	N W one-eighth	1	14	O
698	Sherk, George	N half	5	14	O
690	Stimington, James	N W quarter	2	15	O
723	Slack, John	N E quarter	3	14	O
724	Slack, Thomas	S E quarter	3	14	O
859	Slack, Henry	S part	7	13	O
865	Slack, Anthony	N E quarter	4	12	O
867	Slack, Thomas	N W quarter	4	12	O
651	Smith, Lewis S	S W quarter	2	17	O
762	Snider, Jesse	S half	6	14	O
625	Tackell, Thomas	Central part	4	17	O
711	Taltz, Albert	S W corner	1	15	O
878	Taylor, James H	N E quarter	1	12	O
1014	Thompson, David		3	11	O
691	Tomblin, John	E half	5	15	O
692	Tomblin, John G	E half	5	15	O
880	Upper, Francis G	S W part	1	13	O
622	Vanloon, John	Gore	1	18	O
630	Vanloon, Abraham	N part	1	17	O
633	Vanloon, James	Gore	2	18	O
634	Vanloon, Barzillia	Gore	2	18	O
637	Vanloon, Thomas	N E part	2	17	O
638	Vanloon, Solomon	Gore	3	17	O
649	Vanloon, Wellington	S part	2 & 3	17	O
707	Wardell, Jacob	N W quarter	2	14	O
653	Warner, Barzillia	E half	1	16	O
676	Watson, William	S E corner	6	15	O
703	Watson, William	W half	3	15	O
704	Watson, Thomas	W half	8	15	O
783	Wedrick, Martin	S W part	2	15	O
877	Wedrick, George	S E corner	1	13	O
636	Willcox, Lewis	E part	2	18	O
887	Wilson, David	N half	2	11	O
678	Winger, Christian	S E quarter	7	15	O
679	Winger, Peter	N W quarter	6	14	O
680	Winger, Elias	S W quarter	4	14	O
761	Winger, Abraham	S half	6	14	O
720	Winkworth, Charles	N W quarter	3	13	O
758	Winkworth, George H	S E quarter	5	14	O
631	Woltz, Henry	S part	2	18	O
759	Woltz, Jacob F	S W part	7	14	O
780	Woltz, George	S W part	7	14	O

## POLLING SUB-DIVISION No. 8.

No. on Roll.	NAME.	Lot.	Con.	
		9	11	O
1000	Abbott, William	12	12	T
847	Abercromble, Hugh	14	13	T
784	Agnew, William	38 King st	13	O
744	Almas, David	15, 18	13	O
745	Almas, Augustus A	Gores	15, 18	O
772	Anderson, William J	Gores	12	O
858	Anderson, Adam H	N W one third	8	O
		N part		
		S W part	8	O
675	Benn, Adam H	N E part	14	O
676	Benn, Marshall	S & W three-quarters	14	O
806	Bestwetherlok, William	S & W three-quarters	14	O
807	Bestwetherlok, Thomas	W half	12	O
914	Bliton, John	W half	12	O
915	Bliton, Thomas	S part	10	O
985	Bolce, Silas	N W quarter	8	O
784	Bowman, Samuel	S half	8	O
855	Bowman, Edward	N part	8	O
655	Brennan, John	S part	8	O
674	Brennan, John	Block P	15	O
746	Burke, John W	2 Main st	15	O
812	Byers, Henry			
		N W quarter	10	T
851	Carpenter, Charles	N W quarter	10	T
852	Carpenter, George	N E quarter	10	T
850	Carpenter, John	N half	9	T
1226	Carpenter, Joseph	N half	11	T
849	Catherwood, Thomas	N three-quarters	12	T
916	Catherwood, Thomas	N three-quarters	12	T
917	Catherwood, Robert J	S E quarter	12	T
956	Catherwood, Alexander	S E part	9	T
999	Cherry, Samuel	S E part	20	T
991	Clark, Thomas	N W part	20	T
932	Clark, William	S half	11	T
963	Codd, William H	S half	11	T
849	Cowan, James	20 King st	15	T
814	Crosbie, James	S half	10	T
853	Crozler, William	S half	10	T
854	Crozler, William	S half		
		E part	9	O
672	Daily, James	S half	14	O
952	Dixon, John	5 Main st	15	O
816	Dumble, Walter C	S part	15	O
813	Dumble, William	S part	15	O
819	Dumble, Francis G	8 King st	15	O
825	Egglestone, Perry	Elliott, John	12	O
844	Elliott, John			
		W part	12	O
777	Ferguson, John	S half	11	O
769	Fewster, John	S half	11	O
770	Fewster, William	4 Main street	15	O
811	Filmar, William			
		7 Main st	15	O
779	Giles, Joseph	N end	9	O
824	Giles, Thomas	N E quarter	8	O
907	Given, John	20 Church st	15	O
893	Gorman, Andrew	3 Main st	15	O
750	Griffith, John	3 Main st	15	O
751	Griffith, Benjamin Sr	3 Main st	15	O
752	Griffith, Benjamin Jr	S E quarter	8	O
980	Guthrie, John	S E quarter	8	O
981	Guthrie, James			
		9 King st	15	O
740	Hager, Erastus	Block A B C	15	O
820	Hager, Charles	Block A B C	15	O
821	Hager, John H	S part	14	O
822	Hager, William L			

No. Roll  
87  
78  
91  
88  
99  
83  
92  
90  
91  
99  
99  
7  
6  
6  
6  
8  
8  
1

LAST OF VOTERS, FOR THE TOWNSHIP OF WALPOLE, FOR 1877. 123

No. on Roll.	NAME.		Lot.	Con.	
671	Hall, George	N W quarter	9	14	O
737	Hammond, Henry	32 King st	11	13	O
913	Harris, William	S E quarter	11	12	O
834	Harrison, Thomas	12 John st	15	13	O
995	Harrison, William	N half	19	11	O
922	Harrop, Edward	S half	11	11	O
864	Hewitt, James	N half	18	12	O
905	Hewson, Andrew	S W quarter	10	11	O
986	Hewson, Francis	S W quarter	10	12	O
921	Hind, Ham	S half	16	12	O
688	Hopper, Daniel	Gore	13	14	O
778	Hopper, Samuel	Gore	18	14	O
686	Howard, James	Gore	10	15	O
669	Howard, George	W half	10	14	O
670	Howard, William J	E half	10	14	O
831	Howard, Robert	12 John st	15	13	O
832	Howard, Joshua	12 John st	15	18	O
984	Hull, John	S W part	10	11	O
919	Hunter, Simon	E half	12	12	O
801	Knisley, Benjamin	Block 4	15	13	O
1237	Knisley, Samuel	S central	10	14	O
910	Lemery, Alexander	S W quarter	11	12	O
911	Lemery, Benjamin	S W quarter	11	12	O
912	Lemery, Hamilton	S W quarter	11	12	O
810	Lewis, Thomas	5 Main st	15	13	O
816	Lindsay, William	N half	13	11	O
817	Lindsay, David	N half	14	11	O
857	Lindsay, John	S half	13	11	O
958	Lindsay, David J	S half	13	11	O
804	Lundy, Robert	Block 2	15	13	O
771	McFerran, John	S W quarter	12	14	O
936	McGill, Robert S Sr	S half	19	11	O
937	McGill, Robert S Jr	S half	19	11	O
920	McKee, William	N half	15	11	O
673	McMillian, William	W part	9	15	O
943	Martin, Hugh	N half	17	12	O
895	Martindale, Emerson	9 John st	15	13	O
818	Murray, James	3 James st	15	13	O
946	Nichol, William	S half	16	11	O
947	Nichol, Robert	N half	16	11	O
839	Norman, Henry	13, 14 Church st	15	13	O
801	Parkinson, Thomas	S W corner	9	11	O
808	Phillips, Robert	Block 2	15	13	O
736	Porter, John H	N part	14	13	O
747	Price, Henry	4 King st	15	13	O
842	Rae, Seaton	N half	16	12	O
853	Richardson, William	W half	13	12	O
829	Richardson, Samuel	W half	13	12	O
979	Risdale, George	W half	8	10	O
741	Robins, John	7 King st	15	13	O
982	Robinson, Thomas	S part	9	11	O
908	Roulston, Arthur	S half	9	12	O
809	Roulston, William J	S half	9	12	O
918	Rountree, John	S W quarter	13	12	O
988	Rushton, Francis	S part	19	11	O
924	Rutherford, William	S half	18	11	O
989	Secord, Robert A	VII lot EPR	10	11	O
745	Saymour, Joseph	2 Main street	15	13	O
731	Shoup, Elias	N part	14	13	O
766	Shoup, Levi	N half	9	13	O
773	Smith, Andrew	S half	12	13	O
774	Smith, Robert	N half	13	13	O
776	Smith, John	S half	12	13	O

24] LIST OF VOTERS, FOR THE TOWNSHIP OF WALPOLE, FOR 1877.

No. on Roll.	NAME.		Lot.	Com.	
967	Stadler, Joseph	S part	10	11	O
766	Swing, George	N E quarter	8	13	O
785	Thompson, William	33 King st	15	13	O
719	Trotter, John	2 Main st	15	13	O
923	Tuft, David	1/2 half of N half	18	11	O
944	Waldbrook, James		17	11	O
826	Walsh, Patrick	6 King st	15	13	O
730	Walters, Luther	6 Main st	15	13	O
823	Ward, Charles	6 King st	15	13	O
753	Wilkins, Charles	4 Main st	15	13	O
836	Wilkins, Thomas	19 Howard st	15	13	O
806	Williamson, William	S W corner	15	13	O
743	Wilson, Joseph	1 Main st	15	13	O
845	Wilson, Robert	E half	13	13	O
846	Wilson, John	E half	13	13	O
763	Winger, Simeon	N E quarter	13	10	O
887	Winger, Peter	10, 18 Howard st	15	13	O
738	Winkworth, Richard	N W corner	15	13	O
827	Young, William	7 King st	15	13	O

## Part II. List of Persons entitled to Vote at Municipal Elections only.

## POLLING SUB-DIVISION NO. 1.

No. on Roll.	NAME.		Lot.	Con.	
161	Coulter, David	2 Erie Street	5	1	O
13	Ross, James	E central	6	1	O
151	Smith, William	N part	6	1	O
153	Vaughan, Hiram	2 Erie Street	5	1	O

## POLLING SUB-DIVISION NO. 2.

No. on Roll.	NAME.		Lot.	Con.	
36	Deguire, Antoine	S W part	14	1	O
72	Strickler, Absalom	6, 7 Main Street	24	1	O

## POLLING SUB-DIVISION NO. 3.

No. on Roll.	NAME.		Lot.	Con.	
1143	Ivey, Thomas J	E P R VII Lot	3	7	
448	Rush, Joseph	S W Corner	1	6	

## POLLING SUB-DIVISION NO. 4.

No. on Roll.	NAME.		Lot.	Con.	
380	Stewart, Michael	S W part	17	5	T

## POLLING SUB-DIVISION NO. 5.

No. on Roll.	NAME.		Lot.	Con.	
1117	Barber, James	2 Talbot Street	4	8	T
1235	Bradshaw, J Leeming	8 E P R	4	8	T
1224	Burbidge, Hezekiah	23 W P R	4	8	O
1056	Davis, Hugh	6 James Street	4	8	O
1177	Hull, Joseph	17 Peel Street	4	8	T
1223	Pelley, James W	12 W P R	4	8	O
1222	Scott, James	45, 58 Church Street	4	8	O
1212	Waterhouse, William	22, Monson Street	4	8	T
1115	Winger, Jacob	N E part	5	8	O

## POLLING SUB-DIVISION NO. 6.

No. on Roll.	NAME.		Lot.	Con.	
886	Miall, Job	S part	9	10	O
889	Pattison, Jacob	29, 30 Bertha Street	9	10	O
1166	Watkins, William	10, 11 VII Lots	9	10	O

## POLLING SUB-DIVISION NO. 7.

No. on Roll.	NAME.		Lot.	Con.	
687	Giles, Anthony	N E part	6	14	O
681	Knisely, Abraham	VII Lot 2	6	14	O
639	Mitchell, Daniel	Gore	3	17	T
640	Sloat, George	S E part	3	17	T
884	Wann, William	N W Corner	1	12	T
725	Winkworth, Edward	N E Corner	3	13	O

## POLLING SUB-DIVISION NO. 8.

No. on Roll.	NAME.		Lot.	Con.	
732	Armstrong, John	33 King st	15	13	T
802	Carter, Michael	Block 3	15	13	O
803	Carter, Edward	Block 3	15	13	O
800	Giles, Robert	5 Block B	15	13	O
733	Kett, Nathan	3/ King st	15	13	T
838	Lawson, Enoch	16 Howard st	15	13	O
1230	McDonald, Alexander	12 John st	15	13	O
841	Mike, Henry	13, 16 Howard st	15	13	O
883	Pattison, Jesse	Village Lot	9	11	T
830	Spavin, Thomas	5, 6 King st	15	13	O

*Part III. List of Persons entitled to Vote at Elections to the Legislative Assembly only.*

No. on Roll.	NAME.		Lot.	Con.	
	None.				

I, JOHN HEASMAN, Clerk of the Township of Walpole, in the County of Haldimand, do hereby certify that parts one and three of the within list constitute a correct list for the year 1877, of all persons appearing by the last revised Assessment Roll of the said Municipality to be entitled to vote at elections for members of the Legislative Assembly, and that parts one and two constitute a correct list for said year of all persons appearing by the said Roll to be entitled to vote at Municipal Elections in said Municipality, and I hereby call upon all electors to examine the said list, and if any omissions or other errors are perceived therein to take immediate proceedings to have the said errors corrected according to law.

Dated this 16th day of July, A.D. 1877.

JOHN HEASMAN, Clerk.



# BY-LAW

To define the boundaries of Polling Sub-divisions for Parliamentary and Municipal Elections in the Township of Walpole:—

Be it enacted, and it is hereby enacted by the Municipal Council of the Township of Walpole, That for the purpose of holding Parliamentary and Municipal Elections in the Township of Walpole the Polling Sub-divisions shall be as follows:—

Polling Sub-division No. 1 shall be composed of Lots Nos. 1 to 12 inclusive, in the 1st, 2nd and 3rd Concessions.

Polling Sub-division No. 2 shall be composed of Lots Nos. 13 to 24 inclusive, in the 1st, 2nd and 3rd Concessions.

Polling Sub-division No. 3 shall be composed of Lots Nos. 1 to 12 inclusive, in the 4th, 5th, 6th and 7th Concessions.

Polling Sub-division No. 4 shall be composed of Lots Nos. 13 to 24 inclusive, in the 4th, 5th, 6th and 7th Concessions.

Polling Sub-division No. 5 shall be composed of Lots Nos. 1 to 8 inclusive, in the 8th, 9th and 10th Concessions.

Polling Sub-division No. 6 shall be composed of Lots Nos. 9 to 24 inclusive, in the 8th, 9th and 10th Concessions.

Polling Sub-division No. 7 shall be composed of Lots Nos. 1 to 7 inclusive, north of the 10th Concession.

Polling Sub-division No. 8 shall be composed of all the Lots east of Lot No. 7 and north of the 10th Concession.

**JOHN CALDWELL, Reeve.**

**JOHN HEASMAN, Clerk.**

Passed in Council, 4th June, 1877.

