

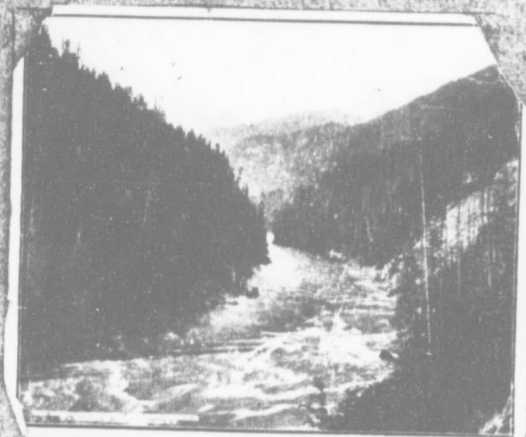
Map  
9711 Re  
K82



# Picturesque Revelstoke

*Price \$1.*

*Printed and Published by the  
Kootenay Mail Publishing Company,  
Revelstoke, B. C.*



# Revelstoke, B. C.

Outside Vancouver Revelstoke is the largest and most important city on the main line of the C. P. R. in British Columbia. The growth of the city has been steady. Every month sees additions to the buildings, and there is a steady rise in the value of real estate.

## TRANSPORTATION CENTRE.

As a transportation centre Revelstoke ranks next to Vancouver in importance so far as the railway traffic of British Columbia is concerned. At Revelstoke are located the C. P. R. machine shops for the Pacific division. These shops employ over 200 men. The large railway traffic of Revelstoke is shown by the fact that over twenty train crews run in and out of this city.

Revelstoke is headquarters for the office of the Superintendent Mountain and Shuswap Division. The Canadian Pacific Railway Company's payroll for Revelstoke is about \$60,000 a month, or between \$700,000 and \$800,000 a year.

Revelstoke is the junction for the Arrowhead and Kootenay branch line connecting with the main line. This branch covers an enormous field, serving Arrowhead, the Fish Creek country, the Lardeau, 180 miles on the Arrow Lakes, and connecting with the Crows Nest Railway via Nelson, Columbia and Western at Robson, and also the Rossland line. The traffic with these points shows a steady increase as the mining and lumbering industries are being developed.

Revelstoke has been well termed the "Gateway of Kootenay," but just as it is the gateway to the south so it is the gateway to the north, and with transportation facilities extended to the north, settlement will take place between here and the Yellowhead Pass, nearly two hundred miles north of this city. That is a country of great lumbering, mineral, fruit-growing and agricultural possibilities. The timber has nearly all been taken up for future operation, and the land suitable for agriculture or cattle ranges will be occupied within a few years. Revelstoke is the natural outlet for that vast territory.

Already steps have been taken to inaugurate transportation to the north. The steamer "Revelstoke" was built by local enterprise, and she is one of the best steamers plying on the inland waters of British Columbia. A plan is afoot to build a tramway past Death Rapids and place another steamer on the river above. By this means the territory adjacent and tributary to the Big Bend of the Columbia and Canoe Rivers will be brought into direct communication with Revelstoke, adding largely to the importance of this city as a distributing centre.

#### EDUCATION.

The educational facilities afforded in the city are now of the best. The city school ranks among the first in the province, and the high school affords advantages for education of quality for any walk in life.

#### BANKING.

Revelstoke has two banks, the Imperial and Molsons. The former has shown its faith in the city by erecting one of the best buildings here.

The fine brick store built nearly two years ago by C. B. Hume & Co. has been described by travellers as one of the best store buildings in the province. The Hume-Lawrence building is of stone and brick and another fine business block.

The residence area keeps continually growing. A well-known builder and contractor from Vancouver Island, who recently visited the city, declared that in all his travels he had never seen a finer lot of residences than those to be seen in a walk along McKenzie Avenue. The extension of the Smelter townsite has afforded those who wish to obtain larger areas for homes an opportunity of doing so, and the rapid manner in which this land has been purchased and handsome buildings erected shows the faith the buyers have in the city.

#### THE CITY

is in an unique position, owning its own franchises, water and light. These were purchased from the Revelstoke Water, Light and Power Company, the purchase money being about \$62,000. Since then the city has effected considerable additions and improvements, making the property worth \$100,000.

The following annual valuations of land and improvements in the city for the past five years show the steady progress of Revelstoke :

Year	Land	Improvements	Increase	Year	Land	Improvements	Increase
1900.....	\$273,346	\$288,446	.....	1903.....	\$342,255	\$369,760	\$52,359
1901.....	314,851	338,420	\$81,379	1904.....	349,478	403,760	41,223
1902.....	317,426	343,230	7,385	1905.....	358,073	475,900	72,140

\* This shows a total increase of valuation in the past five years of \$254,486 or an average increase of \$50,897 per annum. When the conservative basis of civic valuations is considered the steady and safe progress of the city from year to year is evident.

Owing to the contour of the mountain ranges and valleys Revelstoke is the only point at which a city of importance can be established within 100 miles east or west of it. Those who have studied the situation well claim that Revelstoke will be to British Columbia what Spokane is to the state of Washington south of the line, and there is every reason to believe that foresight will be realised.

#### MINERAL RESOURCES.

Revelstoke is the heart of the mineral belt of North Kootenay. At Camborne, to the south, are three stamp mills, which have proved the mineral wealth of that section by the gold bricks produced over a period of three years, and the extensive bodies of silver-lead ore on Fish Creek are practically untouched. The Beatrice, Silver Dollar and Mammoth have developed extensive bodies of ore. There are dozens of mineral properties of equal promise in this section.

Across the divide, in the Trout Lake section, on the south fork of the Lardeau River, is one of the best equipped groups of mines in Western Canada, the property of the Ferguson Mines Limited. The mines operated by the company are the Silver Cup and Nettie L. and they have produced large quantities of high-grade silver-lead ore. The Lucky Boy, near Trout Lake City, is another shipper of high-grade ore and there are many mineral properties being developed there with promise of success.

On the Arrow Lakes and along the main line of the C. P. R., both east and west, are extensive deposits of silver-lead and zinc ores, only waiting capital and mining skill to turn them to account and make wealth for their investors.

To the north the Big Bend has proven a rich placer gold field and the companies operating there have shown there is still a lot of gold to be found.

Then there are extensive mineral deposits there of various kinds, and English and American mine experts have reported most favorably on the mineral prospects of that country. For 150 miles pegmatite dykes have been traced carrying extensive deposits of high grade mica. The mica fields of the northern country are known to be among the most valuable in the world, and the owners of the large mica deposit at Tete Jaune Cache, of whose property the late Sir G. M. Dawson spoke in such eulogistic terms, have offered to put up a large portion of the capital required to open up the northern country. With this transportation these mines will be operated on a large scale.

The Big Bend is well worth investigating for lode minerals. Gold-bearing deposits have been found and developed to some extent on Laforme and Carnes Creek, and at Keystone Mountain, Ground Hog and Standard Basins. Large copper deposits are under development at Standard Basin and Downie Creek. Silver-lead and zinc ores have been located at several points, and there are some of the finest surface prospects to be seen in the country, but which are as yet undeveloped.

The Standard mine, owned by the Prince Mining and Development Company, has been developed to a depth of 550 ft. on the dip of the vein, and the ore-body has increased in volume with depth, while the value of the ore has also improved as it goes down. Arrangements are being made for installing an aerial tramway and smelter. The Standard mine occurs in a volcanic belt. The highest mountain in that section, Morris Peak, appears to be on the rim of an extinct volcano, whose crater became filled with glaciers subject to the cessation of activity.

#### TIMBER WEALTH.

Revelstoke lies in one of the wealthiest timber belts in Canada. The Columbia River, on which the city is built, drains something like 800 miles of heavily timbered valleys. That great area can be logged and the logs floated down the Columbia River to Revelstoke and the Arrow Lakes for manufacture. These timber investors have shown their great faith in the future of the lumbering industries that will be built up in and around this city by the keen way in which they have taken up these lands. Where the Fred Robinson Lumber company was three years ago the only lumbering concern operating in the district, we have now the Revelstoke Lumber Company, Bowman Lumber Company, with its mill here, and another large mill at Comaplix, Julian's mill at Greely Creek, the Arrowhead Lumber Company, the Big Bend Lumber Company, the Pingston Creek Lumber Company, the Yale-Columbia Lumber Company, the Mundy Lumber Company, all operating within a short distance of the city. Other mills are being promoted, and Revelstoke is the city through which passes the payrolls of these great industries.

## AGRICULTURE AND FRUIT GROWING.

A remarkable fact about British Columbia is that whenever water can be got on the land it will grow anything. The soil is exceptionally fertile, and much of the bench land is suitable for small farming and fruit growing. The valley of the Columbia, between Revelstoke and Arrowhead, on both sides of the river, will one day be densely peopled, when the lumberman has removed the timber and the farmer can take his place. The other valleys east, west and north will fill up with settlers.

## TOURIST ATTRACTIONS.

Revelstoke is destined to become the great tourist centre of the mountains of British Columbia—the Switzerland of America. The city possesses excellent hotel accommodation. The Canadian Pacific Railway Company's trains run twice daily east and west during the summer months and there is a daily service each way for the rest of the year. The C. P. R. also run a daily service from Revelstoke to South Kootenay points, with a first-class steamship service on the Arrow Lakes.

To the east are the aspiring summits of the Selkirk mountains, the Mecca of mountaineers. Many of these peaks have never yet been conquered by Alpine climbers. North and south of the railway line are great glaciers and ice-fields, Rogers Pass being the gateway through the maze of peaks.

In Cougar Basin, two miles north of the railway line, are the caves discovered last fall by C. Deuchman. The subterranean caverns are supposed to extend for miles, and are most interesting to the tourist who loves nature's wildest grandeur.

Apart from the caves there is no prettier spot in the mountains at which to spend a midsummer holiday than Cougar Basin. The view on all sides is magnificent, the ground is carpeted with lovely flowers of all shades and hues, several of the mountain peaks afford an easy climb, rewarded by a magnificent panorama of mountain and glacier which the eye can never forget.

At Albert Canyon, famous in itself, is a hot spring and a soda spring. The Waverley wagon road takes the tourist by an easy means of travel 28 miles into the heart of the mountains.

From Glacier and Rogers Pass branch out trails to the most interesting points.

At Rogers Pass C. D. Morris's private hotel affords first-class accommodation, and in Glacier House the C. P. R. have provided a first-class hotel capable of accommodating 200 guests. Swiss guides are also available for those wishing to climb the mountain peaks or traverse the glaciers.

To the west, Revelstoke is the gateway of the Eagle Pass, with its series of charming lakes. At Sicamous are the Shuswap Lakes where the tourist may spend weeks of enjoyable boating and fishing. From this point the Sicamous and

Okanagan branch railway, operated by the C. P. R., carries the traveller through the Okanagan Valley, the California of Canada, where fruits of almost all kinds are grown to perfection in abundance. A trip on the Okanagan Lake on the comfortable steamers of the C. P. R. is a treat and visitors to the pretty towns along the shores of the lake cannot fail to enjoy the beauties of the scenes and the hospitality of the people.

The railway and steamship services south from Revelstoke afford transportation to the Lardeau and the far-famed Slocan, with their silver-lead mines, to pretty mountain lakes and fastnesses, to Nelson, Rossland and the Boundary, with their great mining and smelting enterprises.

Within twelve miles of Arrowhead, on the south branch, are the famous Halcyon Hot Springs, with a well-equipped sanitarium and hotel. Six miles further on are St. Leon Hot Springs, a charming holiday resort. Splendid fishing and boating are to be had on the Arrow Lakes.

North from Revelstoke is a virgin field of intense interest to the tourist. Here is the Big Bend, made famous by the gold production of the sixties. The Bend is so named from the great return of the Columbia River 120 miles of Revelstoke, where it wheels south on its course. For over 40 miles north from Revelstoke the river is navigable by the fine river steamer of the Revelstoke Navigation Company. A party of tourists who had travelled the world over took in this trip during the last season, and stated it was the finest river trip they had ever experienced, and they would not have missed it on any account. No tourist should leave the mountains without taking in this trip. The scenery on the upper river above Revelstoke is of the grandest description—taking in the Columbia canyon with its rocky walls carved and hewn by a giant water power. At other points the steamer pushes her way over rapids and riffles that make the traveller wonder how the boat on which he travels glides so smoothly over them.

From the steamer some grand sights are to be had, notably at Five Mile, (35 miles up the river) the Frenchman's Cap and its neighbouring glaciers which, glinting in the sunlight, seem to approach almost to the water's edge.

From the river trails lead to the mountain basins, and there is no where the world over a prettier country to be met with than the parks on the summits of the mountains, with their great stretches of level or gently sloping country, swathed in grass and pea vines, carpeted in lovely flowers, and interspersed with the rich green of balsam and spruce trees.

No more entrancing holiday resorts could be found than these beautiful parks of nature's design, with their bracing atmosphere. This is a great game country too—bear, caribou and mountain goat being plentiful. Tourists might spend weeks of healthgiving recreation amid these mountains bright with sunshine and flowers, under the canopy of heaven and breathing the life-giving atmosphere. When the time comes to leave these wondrous scenes the tourist cannot but

feel they have become endeared to him as he feels the regret at having to say farewell to a land where each day's travel brings something new and delightful in the panorama that stretches around him.

Around the city of Revelstoke itself are several points of interest. Mt. Begbie is the principal landmark in sight of Revelstoke. Rising to a height of about 10,000 feet its sides are gored by glaciers. The glacier on the north side of the mountain has a thickness of 300 feet of ice. The Tourist Association will probably take steps to have a trail made to this scenic attraction and have a chalet built there for the accommodation of tourists.

Illecilliwaet Canyon, at Revelstoke, is a wonderful example of the power of water to cut its way through the hardest rocks. The Illecilliwaet River is confined to a narrow deep channel. It is within two miles of the city, and is well worth a visit.

Columbia Canyon is distant four miles from the city, from which a carriage road has been built to the further end of the canyon. This canyon is about three miles in length and visitors to the city should not miss a trip out there. Horses and vehicles may be ordered at the hotels and the Tourist Association has secured a schedule of reasonable rates.

A mile above the Columbia Canyon is Eight Mile Creek on which is one of the most beautiful waterfalls to be seen in a tour of the mountains. The falls are only a hundred yards from the Columbia River, and a trail has been made to the foot of them, so they are easy of access. The Tourist Association have arranged to extend the trail to a rock bluff overlooking the falls, and here rustic seats will be placed and a railing fixed to ensure the safety of visitors while taking in this magnificent sight.

Williamson's Lake, four miles south of the city, is a pretty spot much patronised by local picnic parties.

Mt. Victoria, immediately north of the city of Revelstoke, has on its summit, an altitude of 6000 ft. above sea level, a beautiful park of 1000 acres. The Tourist Association are arranging to construct a trail to the summit, which could then be reached in from two to three hours walk from the city. Saddle horses will also be available for the trip. The summit of this mountain commands one of the finest mountain views to be seen in the Canadian Alps.

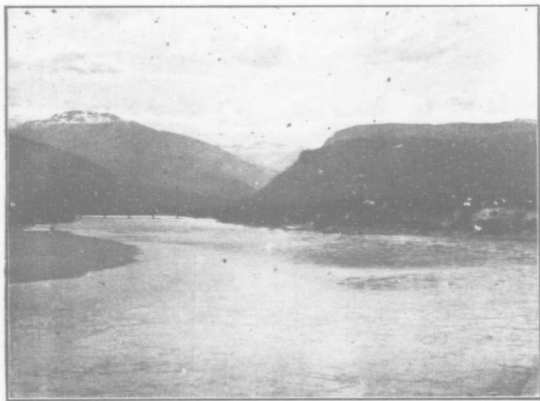
The Revelstoke Navigation Company have taken up a pretty island on the Columbia River, which they are improving, planting with trees and otherwise making attractive as a Coney Island to which steam-boat excursions can be run.

The people of British Columbia are a hospitable people occupying a wonderful domain, the enjoyments and attractions of which they seek to share with the visitors from the wide, wide world. The city of Revelstoke aims at making the marvellous scenic attractions around it widely known, easy of access, and that the thousands of tourists who now visit these mountains annually for pleasure, health and recreation shall enjoy the time spent here and store it in memory as among the happiest of life's incidents and experiences.





COLUMBIA CANYON, REVELSTOKE.



COLUMBIA RIVER, REVELSTOKE.



THE FLUME, COUGAR CREEK  
Between Natural Bridge and Big Cave.



CEDAR TREES, BOWMAN LUMBER CO'S. LIMITS, FISH CREEK.



BIG CEDARS, CAMBORNE.



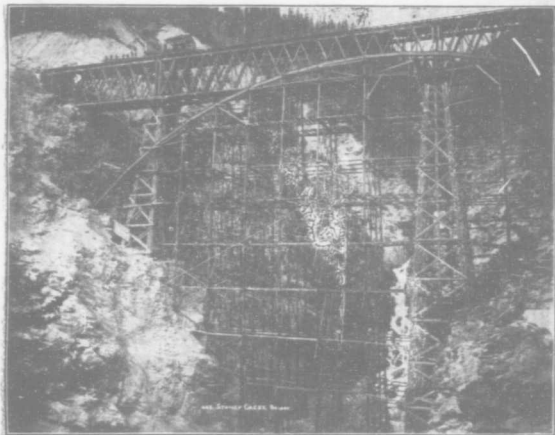
HOWSON BLOCK, REVELSTOKE



MOLSONS BANK, REVELTOKE.



REVELSTOKE AMATEUR DRAMATIC PERFORMERS.



STONEY CREEK BRIDGE UNDER CONSTRUCTION.



SPLASHING BOOM, THREE VALLEY.



THE LOOP.



LOGGING CAMP, ARROWHEAD LUMBER CO'S. LIMITS.



IMPERIAL BANK OF CANADA, REVELSTOKE

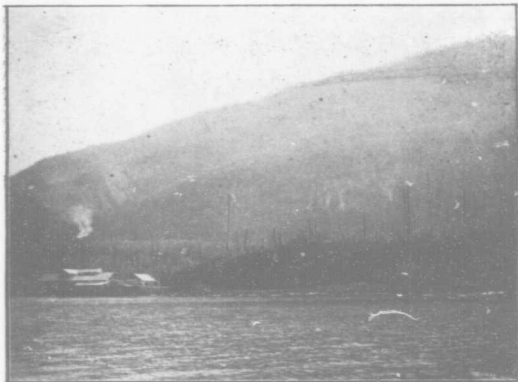


CANADA DRUG AND BOOK STORE, REVELSTOKE.





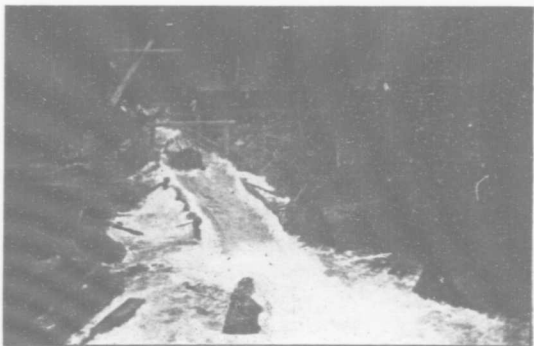
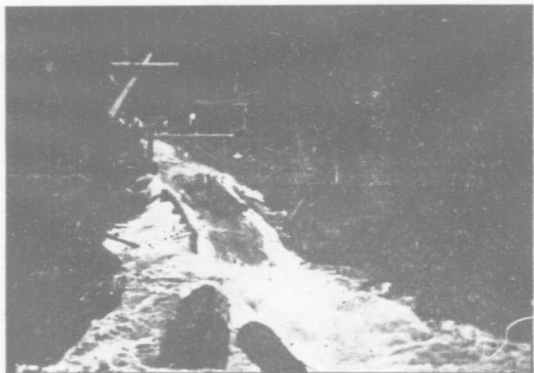
TEST OF STONEY CREEK BRIDGE, on completion of construction.



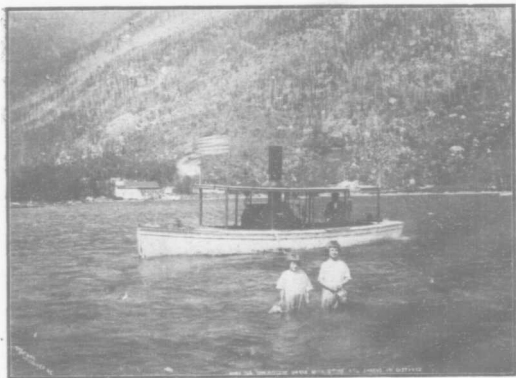
SITE OF MUNDY CO'S. MILL, THREE VALLEY.



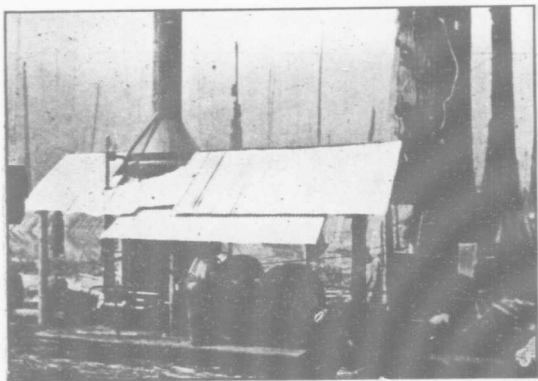
MUNDY LUMBER CO'S STORE AND OFFICES, THREE VALLEY.



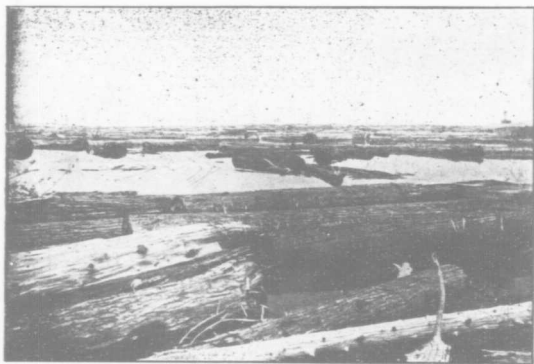
SPLASHING LOGS, EAGLE RIVER LUMBER CO'S. LIMITS,  
THREE VALLEY.



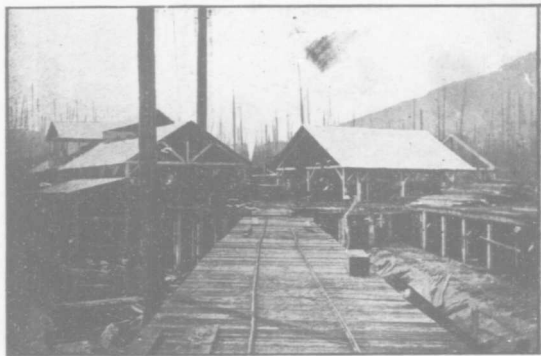
MUNDY LUMBER CO'S TUG, COMMODORE McRAE, THREE VALLEY.



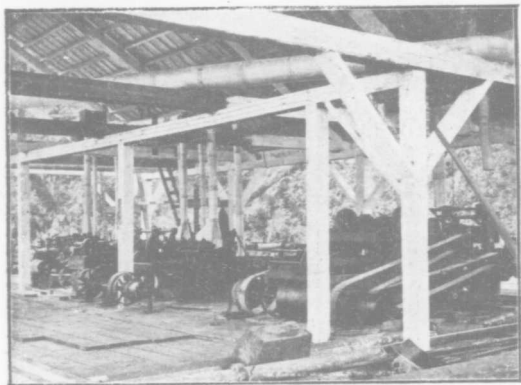
E. L. KINMAN'S STEAM LOGGER, THREE VALLEY.



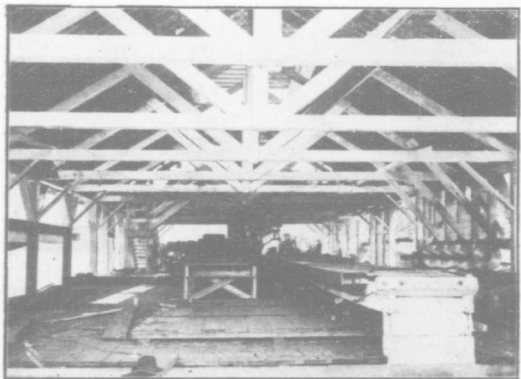
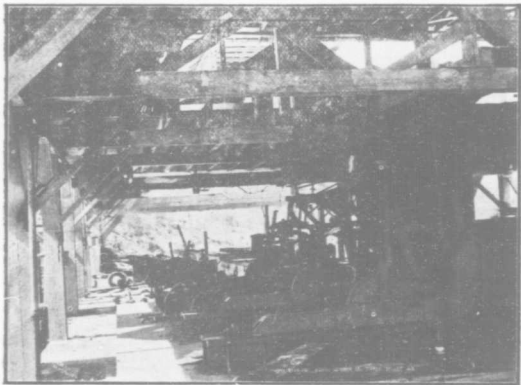
MUNDY LUMBER CO'S. LOGGING BOOMS, THREE VALLEY.



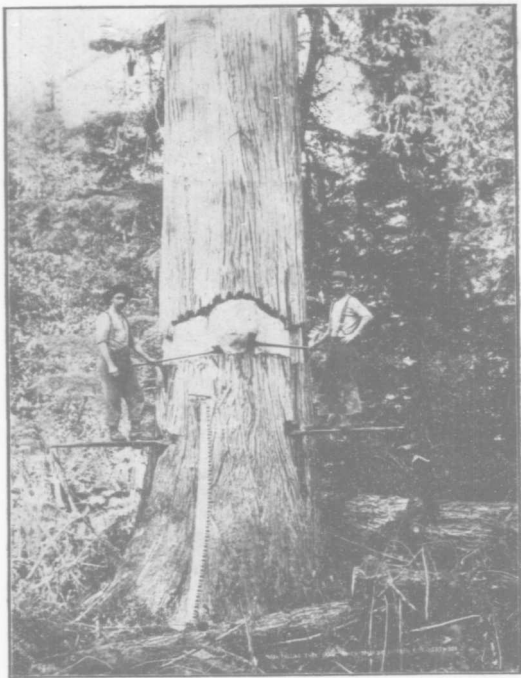
MUNDY LUMBER CO'S MILL, THREE VALLEY.



PLANER FLOOR, MUNDY LUMBER CO MILL.



INTERIOR VIEWS, MUNDY LUMBER CO'S. MILL, THREE VALLEY



FELLING TREES, EAGLE RIVER LUMBER CO'S. LIMITS,  
THREE VALLEY.

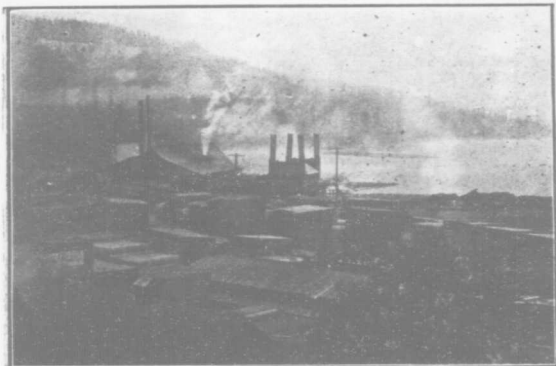




BOWMAN LUMBER CO'S. MILL, REVELSTOKE.



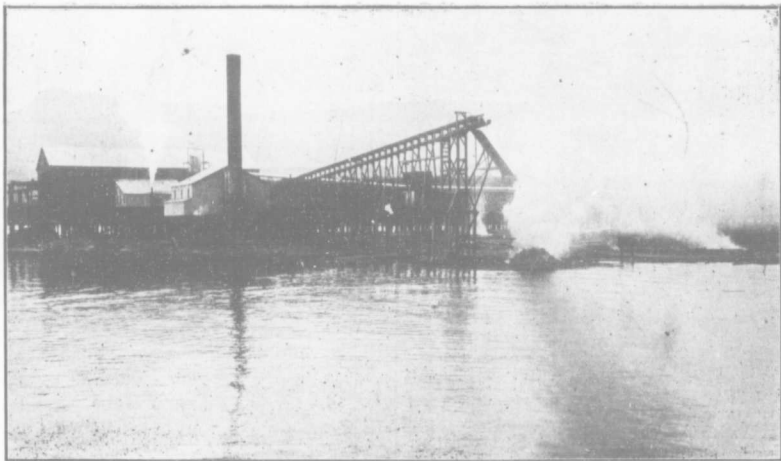
BOWMAN LUMBER CO'S LOGGING TEAMS.



YALE-COLUMBIA LUMBER CO'S. MILL, NAKUSP.



YALE-COLUMBIA CO'S. STEAM TUGS.



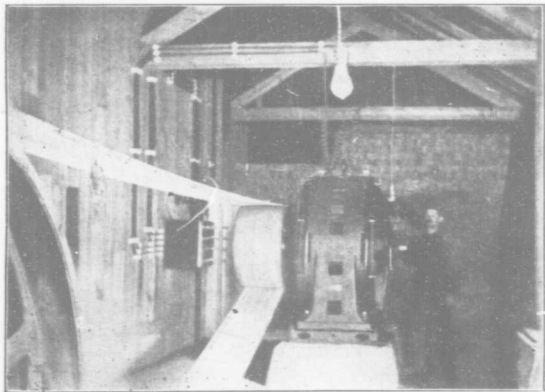
BIG BEND LUMBER CO'S MILL, ARROWHEAD.



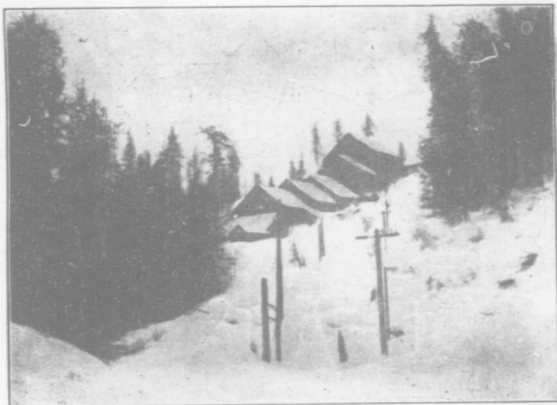
AERIAL TRAMWAY FROM FERGUSON MINES REDUCTION  
WORKS TO NETTIE L. MINE.



SOURCE OF WATER POWER, FERGUSON MINES MILL  
South Fork, Lardeau River.



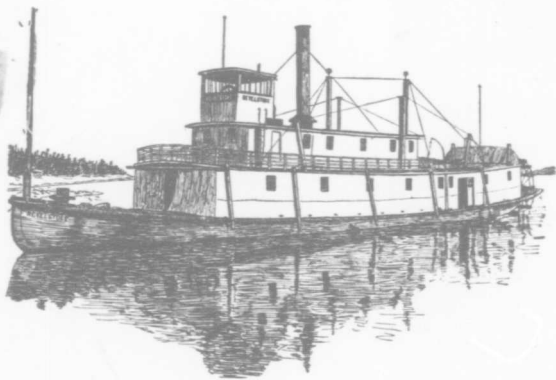
ELECTRIC MOTOR, REDUCTION WORKS, FERGUSON MINES.



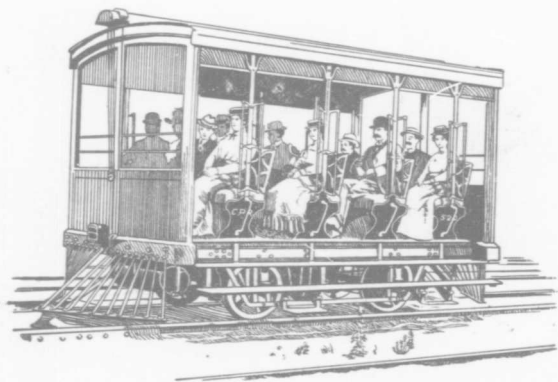
REDUCTION WORKS, FERGUSON MINES. FERGUSON.



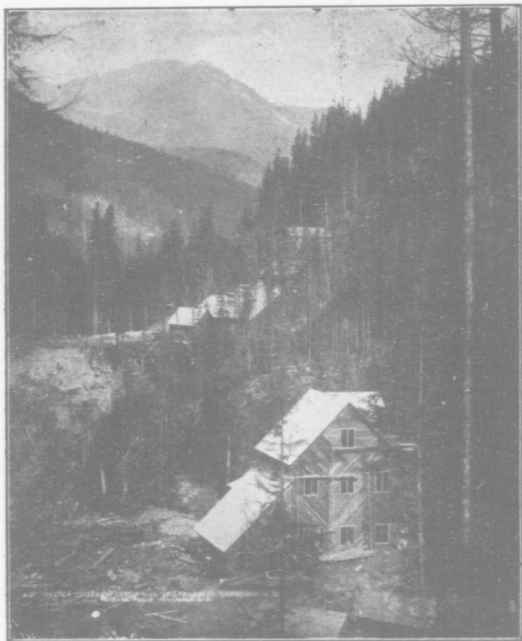
FLUME OF FERGUSON MINES.



STEAMER REVELSTOKE, plying between Revelstoke and Big Bend.



C. P. R. GASOLINE TOURIST CAR.

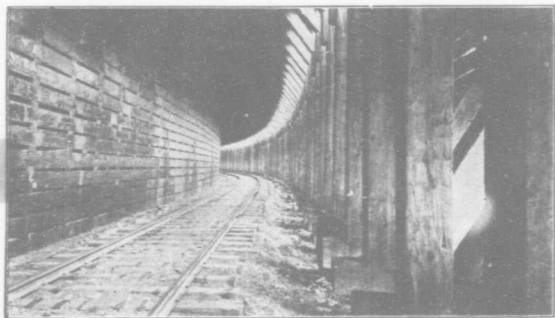


OYSTER CRITERION MILL, CAMBORNE.





POOL CREEK, CAMBORNE.



SNOWSHED, ROGERS PASS.



McKENZIE AVENUE, LOOKING NORTH.



McKENZIE AVENUE, LOOKING SOUTH.



VIEW OF REVELSTOKE, SHOWING MOUNT BEGBIE.



COLUMBIA RIVER AND MOUNT BEGBIE, REVELSTOKE.



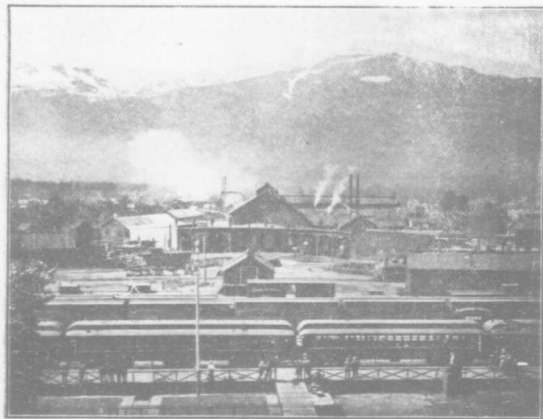
FIRST STREET, REVELSTOKE.



REVELSTOKE, 15 YEARS AGO.



MAIN BUSINESS STREET, REVELSTOKE, 15 YEARS AGO.



C. P. R. SHOPS REVELSTOKE.



A REVELSTOKE HOCKEY TEAM,



A REVELSTOKE LADIES HOCKEY TEAM.





**FIRST STREET, REVELSTOKE.**

This street is coming to the front, as the northern portion of McKenzie Avenue fills up there is a tendency to the continuation of the business buildings along this street.



**BOATING AT THE MOUTH OF THE TUMWATA, REVELSTOKE.**



REVELSTOKE SKI CLUB—An Awkward Position.



REVELSTOKE SKI CLUB—The Ascent.



ROGERS PASS.



ILLECILLIWAET VALLEY.



FALLS AT HALCYON HOT SPRINGS.



WEST END RESIDENCES, REVELSTOKE.



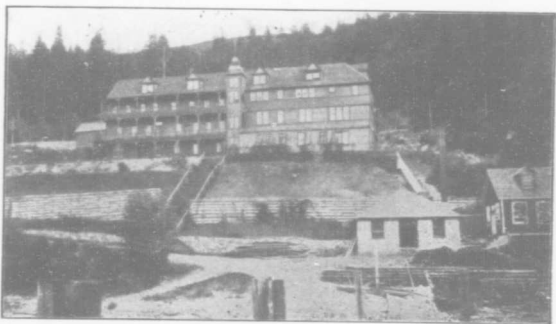
REVELSTOKE'S FIRST LAWN TENNIS CLUB.



REVELSTOKE SNOWSHOE PARTY.



FIRST RAILWAY BRIDGE ACROSS COLUMBIA RIVER, REVELSTOKE

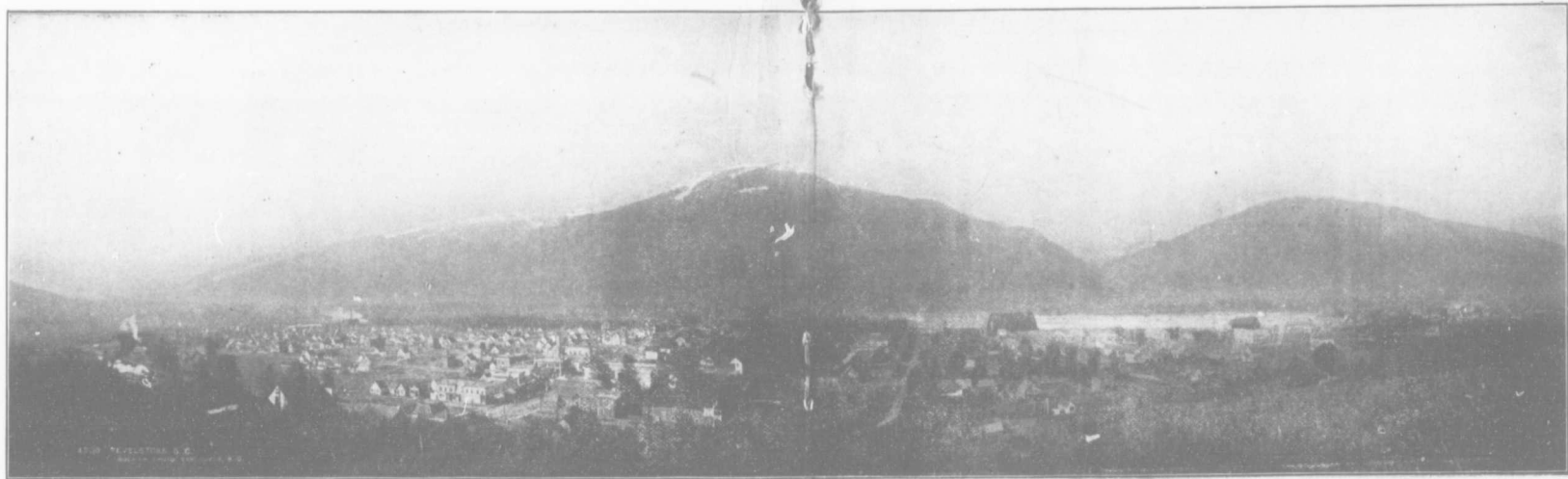


HALCYON HOT SPRINGS SANITARIUM.

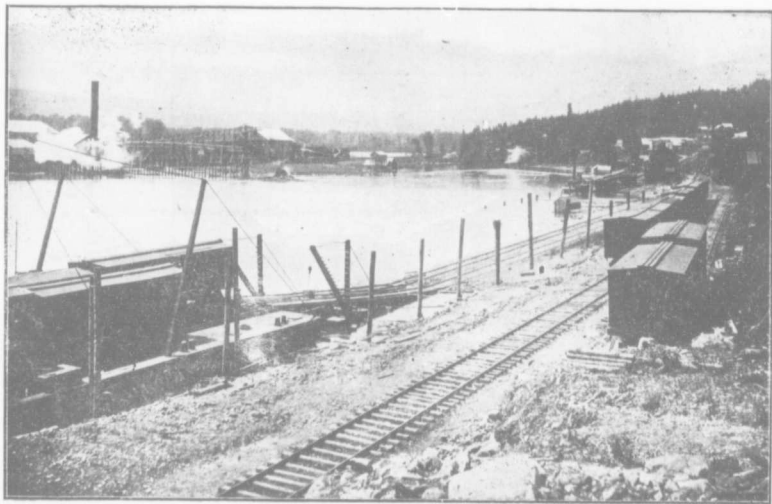


· DIOCESE OF KOOTENAY—MEETING AT REVELSTOKE.





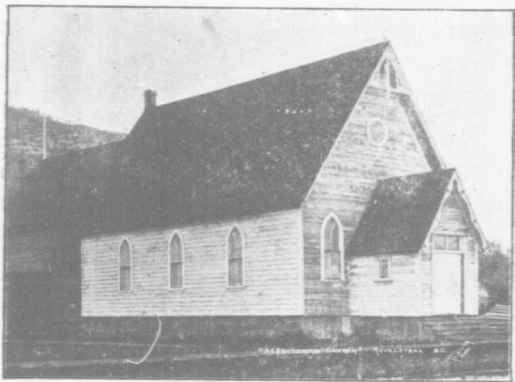
**CITY OF REVELSTOKE, B. C.**  
In the heart of the Switzerland of America, the Mountains of British Columbia.



ARROWHEAD.



METHODIST CHURCH, REVELSTOKE.



ST. ANDREW'S CHURCH, REVELSTOKE.



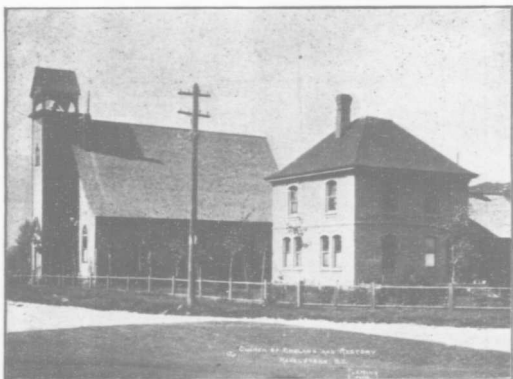
WEST END RESIDENCE, REVELSTOKE.



McKENZIE AVENUE RESIDENCE, REVELSTOKE



McKENZIE AVENUE RESIDENCES, REVELSTOKE.



ST. PETER'S CHURCH, REVELSTOKE.



ROMAN CATHOLIC CHURCH, REVELSTOKE.



C. D. MORRIS'S STORE AND HERMIT HOUSE, ROGERS PASS.



THE LOOP, WITH FOUR TRACKS IN SIGHT.



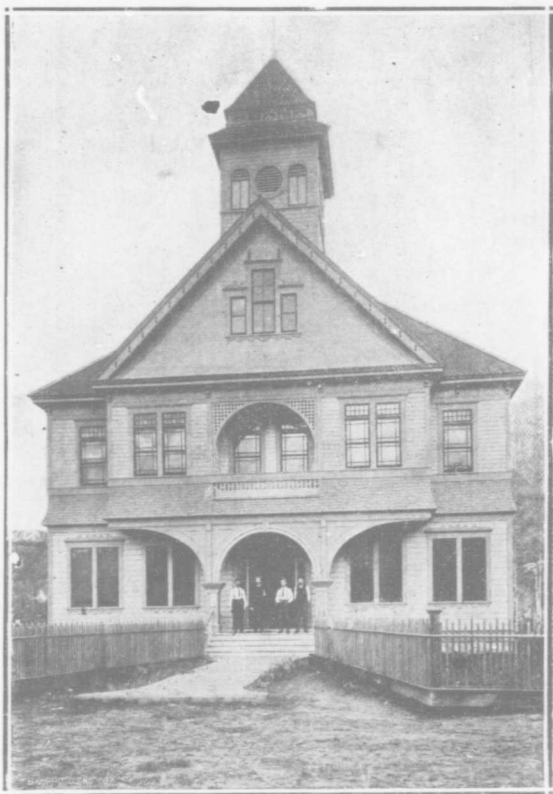
QUEEN VICTORIA COTTAGE HOSPITAL, REVELSTOKE, B. C.

This is one of the most successfully conducted hospitals in the West. The institution owes its existence largely to the interest taken in it by the Victorian Order of Nurses. The foundation stone was laid in 1914 by the founder of that institution, Lady Minto.



DRILL HALL, REVELSTOKE, B. C.





COURT HOUSE, REVELSTOKE.

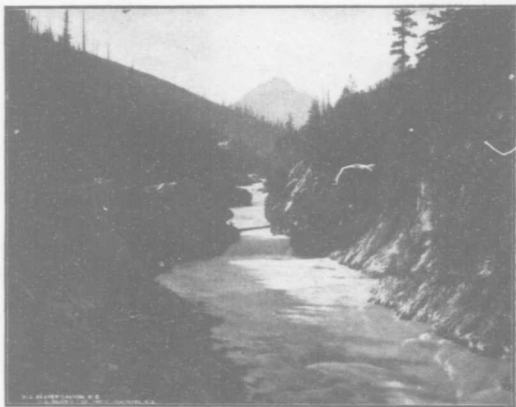
This is the headquarters for the Provincial Government Officials, including the Government Agent, Gold Commissioner, Mining Recorder and Stipendiary Magistrate.



BIG CEDAR TREE, THREE VALLEY.



E. L. KINMAN'S LUMBER CAMP, THREE VALLEY.



U.S. GEOLOGICAL SURVEY, W. B. GRAVES, PHOTOGRAPHER, CALIFORNIA



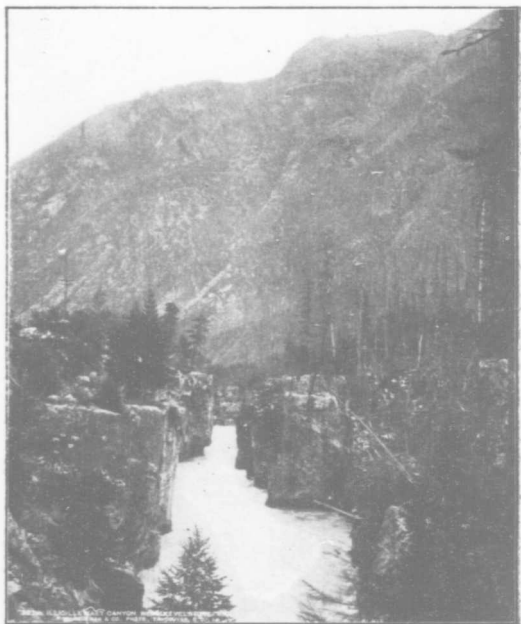
ILLECILLIWAET RIVER NEAR REVELSTOKE.



McKENZIE AVENUE RESIDENCES, REVELSTOKE.

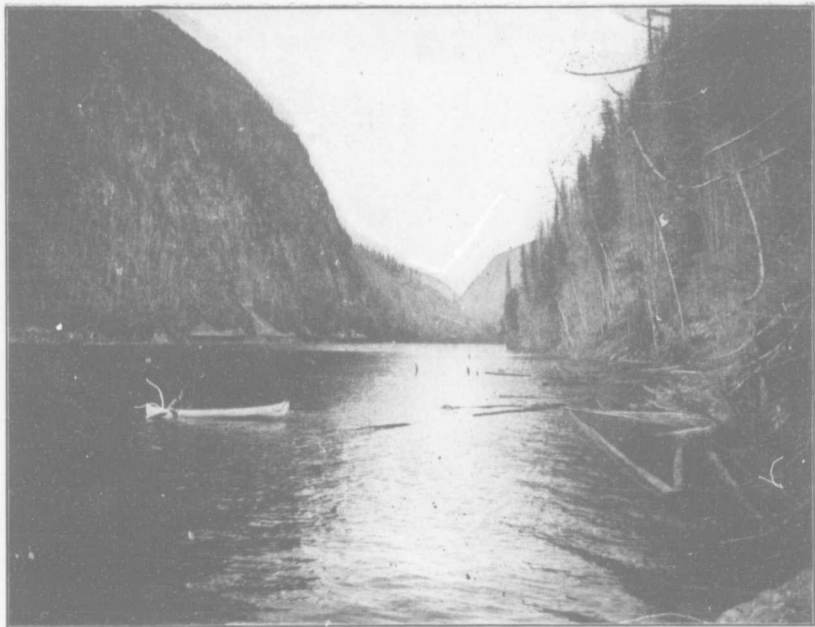


McKENZIE AVENUE RESIDENCES, REVELSTOKE.



ILLECILLIWAET CANYON, REVELSTOKE.





THREE VALLEY LAKE.



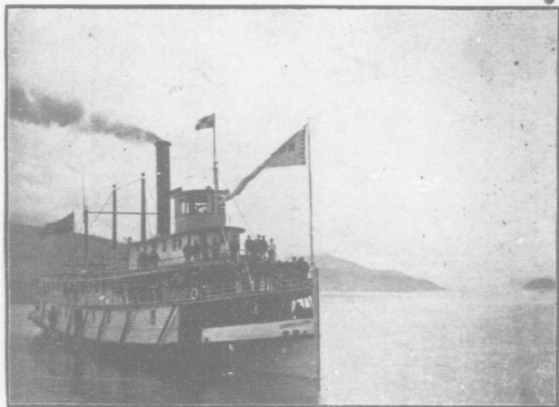
PUBLIC SCHOOL, REVELSTOKE, B. C.

This is a splendid structure of brick and stone, with eight large class rooms. It has been successfully conducted by the Board of Trustees, who have aimed at securing a capable staff.



CITY HALL AND No. 2 FIRE HALL.

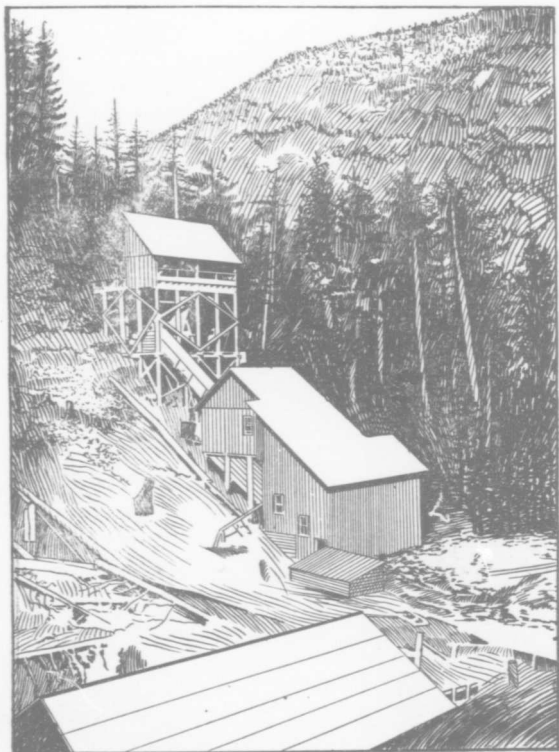




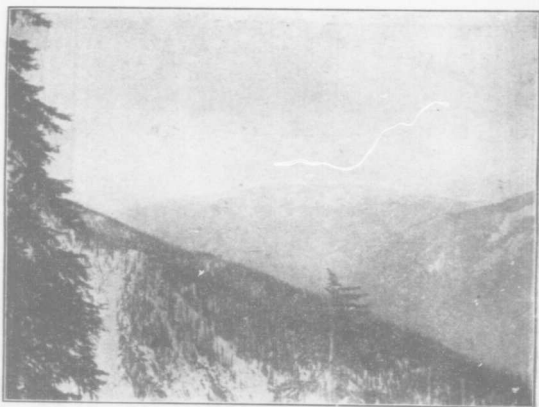
STEAMER ROSSLAND, plying between Arrowhead and Robson.



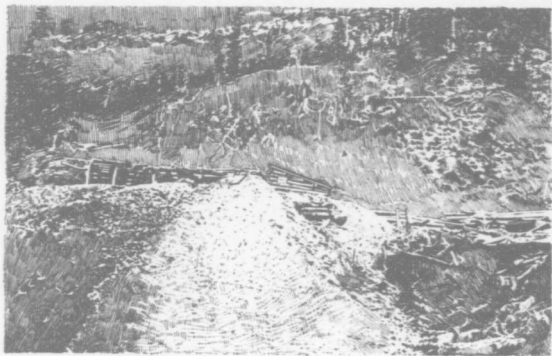
WEST END RESIDENCE, REVELSTOKE.



GOLD FINCH STAMP MILL, CAMBORNE.



SILVER CUP MOUNTAIN.



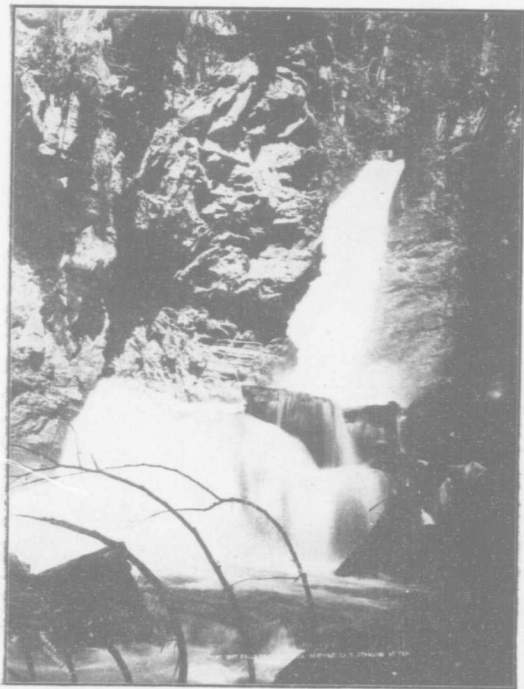
McNEILL CROSSCUT TUNNEL, SILVER CUP MINE.



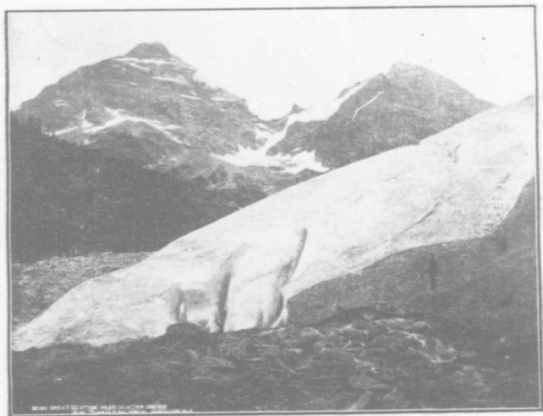
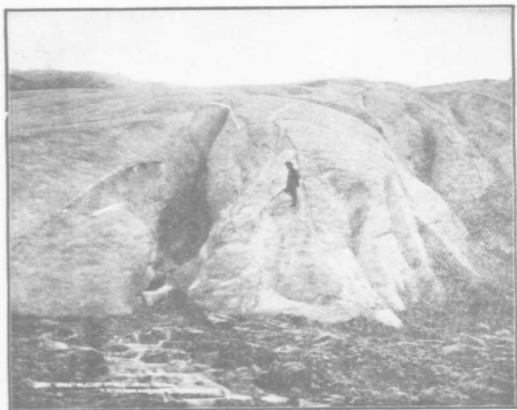
EVA STAMP MILL, CAMBORNE.



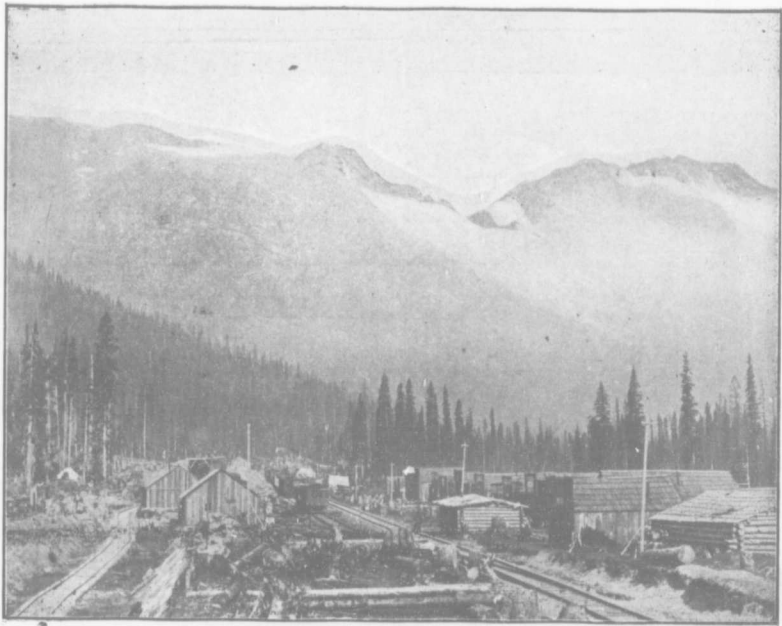
EVA FLUME, CAMBORNE.



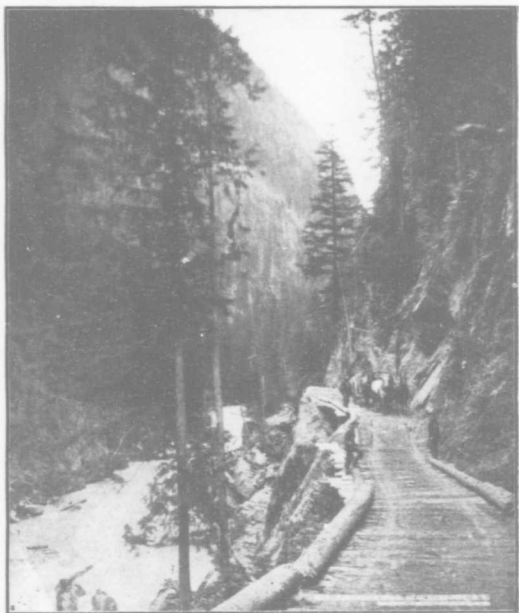
FROG CREEK FALLS, THREE VALLEY.



VIEWS OF THE GREAT GLACIER.



ROGER'S PASS DURING CONSTRUCTION DAYS.



FISH CREEK, CANYON, CAMBORNE.





GLACIER STATION, HOUSE AND HERMIT RANGE.



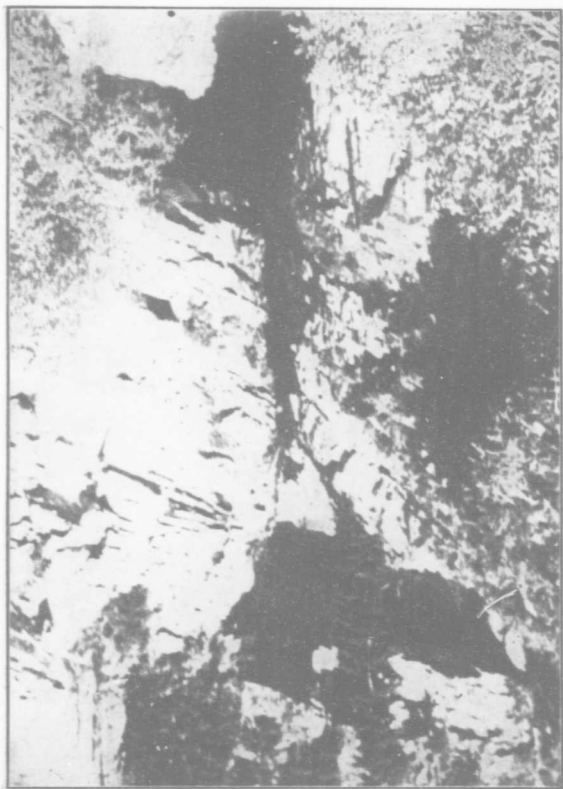
THE NATURAL BRIDGE, THE CAVES, showing inlet of Cougar  
Creek, underground.



MARION LAKE AND GLACIER.



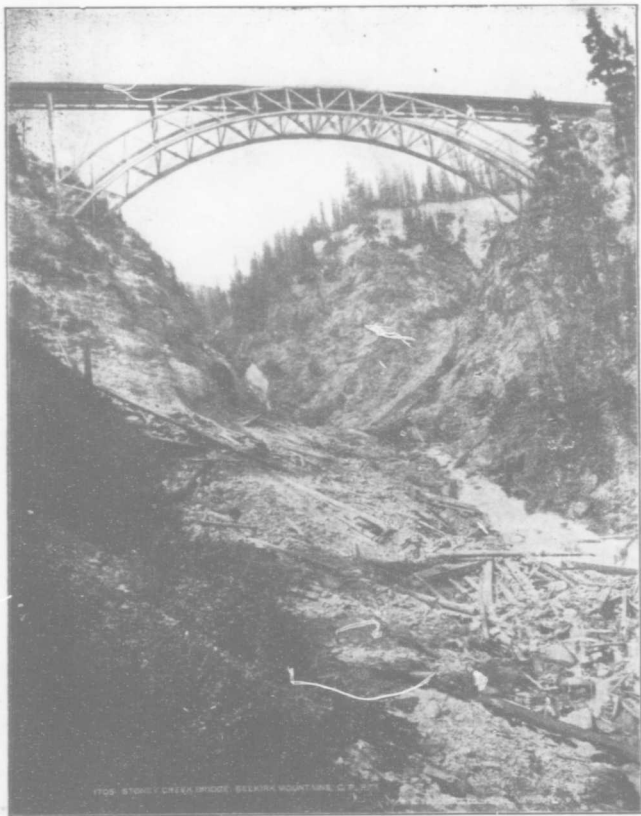
INTERIOR VIEW AT CAVES, COUGAR BASIN.



THE CANYON, THE CAVES, COUGAR BASIN.



COUGAR MOUNTAIN ABOVE CAVES, AND LAKE FORMING HEADWATERS OF COUGAR CREEK.



1708 STONEY CREEK BRIDGE, BELKIRK MOUNTAINS, C. P. R.

**STONEY CREEK BRIDGE**, one of the highest bridges in the world.



FALLS ON COUGAR CREEK, ABOVE CAVES.



VIEWS OF THE LOOP.



NEW MAGAZINE

---

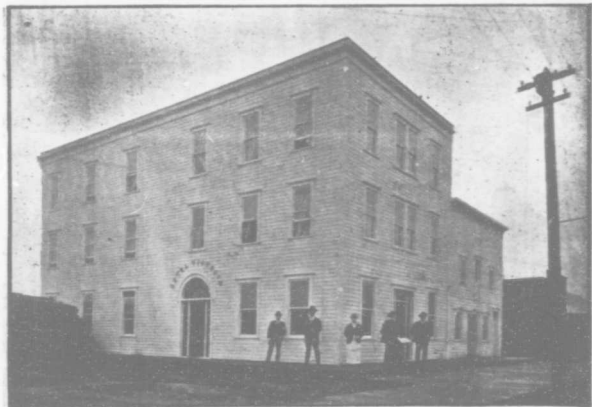
# WONDERLAND

We have arranged to begin the publication at an early date of an illustrated magazine entitled "WONDERLAND."

The Magazine will be devoted to the description and illustration of the scenic attractions, tourist routes, health resorts, and conveniences of travel on the Pacific Coast and over the Lakes, Rivers and among the Mountains of the North-West and British Columbia.

Special efforts are being made to secure a wide-spread circulation among travellers and tourists in Britain, Europe and the American States.

SUBSCRIPTION 25c. PER COPY, OR \$2.50 PER ANNUM.



VICTORIA HOTEL, REVELSTOKE.



TAYLOR BLOCK, REVELSTOKE.

# Cressman and Morrison

The Leading  
Merchant Tailors.

We carry the largest stock in the city. Fancy Fabrics in popular weaves and fashionable colorings, bright and snappy novelties, which are exceptionally attractive. Drop us a line and our traveller will call with a full range of samples.

UNION LABEL  
on all garments  
turned out by us.



CRESSMAN AND MORRISON

# J. GUY BARBER

Optician  
Watchmaker  
Jeweller

C. P. R. Watch Inspector.

---

## REVELSTOKE, B. C.

---

A first-class stock of Diamonds,  
Watches and Jewelry on hand.

# HOTEL REVELSTOKE

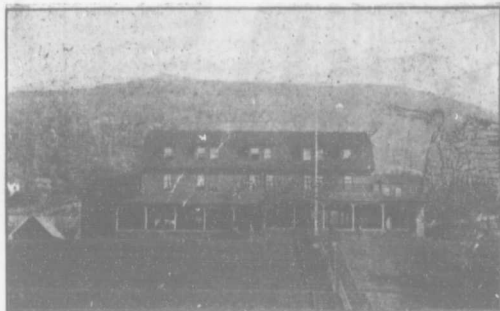
At the C. P. R. DEPOT.

---

FIRST CLASS SAMPLE ROOMS

---

A. J. McDONELL, Manager.



---

## HOBSON & BELL

---

### THE PIONEER BAKERY

Bread and Cakes of all kinds are our Speciality.

Flour and Feed.

Fresh Fruit in Season

Choice selection of Fresh Groceries always in stock.

HOBSON & BELL,

REVELSTOKE, B. C.

S. H. BOWMAN,  
President.

E. C. WARNER,  
Vice-Pres.

F. E. SINE,  
Secy-Treas.

---

# Bowman Lumber Co., Limited

Manufacturers of

Lumber, Lath, Mouldings, Shingles,  
Cedar, White Pine, Fir  
Products,

MILLS AT REVELSTOKE, B. C., COMAPLIX, B. C.

GENERAL OFFICE, - REVELSTOKE.

# BOURNE BROS.

---

---

**GENERAL  
MERCHANTS**

**Dealers in Groceries,  
Hardware, Paints,  
Oils and Miners  
Supplies.**

---

---

Stores at Revelstoke **L D**

# HOTEL LARDEAU

COMAPLIX, B. C.

---

Mr. Hamilton, the proprietor, takes great pleasure in acquainting the public with the fact that he has newly furnished and renovated the above mentioned house, making it the best and most accommodating hotel in the Lardeau Country. A full line of the Choicest Wines, Liquors and Cigars on hand. When in this section of British Columbia be sure and give him a call.

---

**RATES \$2.00 PER DAY.**

THE

# MEN'S HEADQUARTERS

---

The place you want to buy anything in Men's or Boys' Stuff is right here. The largest stock, the lowest prices, and the

**Fit-Reform  
Agency**

the only clothing sold.

---

**J. G. MACDONALD**

# TO INVESTORS

---

---

REVELSTOKE is today the Premier City of the West for conservative investors who demand absolute security and a good chance of increasing values.

With an ever increasing population of people who live in and help build up their own city ; with its natural resources of minerals, timber, and agricultural lands ; with its unrivalled geographical position, and the ultimate railway centre of British Columbia, Revelstoke undoubtedly is the "HUB" of the Interior and the Best City in the Province for the Investor or Home Seeker.

We have unexceptional facilities for assisting you if you desire information that will induce you to settle or invest in this enterprising city.

We are sole agents for the Revelstoke Land Company, who own the greater and choicest of the business and residential part of the city and have always a number of first-class industrial and real estate investments that will pay you to investigate.

## Revelstoke Insurance Agency, Ltd.

REAL ESTATE,

LOANS,

INSURANCE.



**SMOKE UNION**  
Cigar Factory  
**CIGARS**

**BRANDS :**

Our Special      The Union  
    Marca Vuelte  
La Corona      La Prima

**H. A. Brown,** Proprietor  
Revelstoke, B.C.

**Reid & Young**  
Revelstoke, - - B. C.

**DRY GOODS  
MERCHANTS**

**MILLINERS AND DRESSMAKERS  
GENTS FURNISHINGS  
BOOTS AND SHOES**

---

At our Arrowhead Store: Groceries,  
Dry Goods, Boots and Shoes.

# **C. B. HUME & CO., LTD.**

## **DEPARTMENT STORE,**

REVELSTOKE, B. C.

Mail Order Dept.

Write for Samples.

Our aim is quality rather than price. We endeavor to carry a complete stock of everything to be found in an up-to-the-times department store.

### ***Dress Goods Department***

Silk Dress Goods, Dress Accessories, Gloves, Hosiery, Neckwear, Ribbons, Laces. A complete stock of Staple Dry Goods.

Millinery and Dressmaking Departments Second Floor.

### ***Groceries***

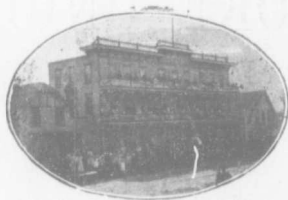
The largest and best assorted stock of Groceries and Fine Eelacatsenne in the interior.

### ***Crockery and Glassware***

Here we cater to the wants of all. Can show you everything from the ordinary Delft to the finest Limoges and from the ordinary Sand Glass to the finest Cut article.

### ***Boots and Shoes***

Ladies Fine Evening Shoes, House Shoes, Street Shoes. Headquarters for the Slater Shoes.



## **Central Hotel**

Revelstoke, B. C.

ABRAHAMSON BROS., Proprietors.

NEWLY BUILT. LARGE SAMPLE ROOM.  
FIRST-CLASS IN EVERY RESPECT.  
ALL MODERN CONVENIENCES.

Rates \$1.50 per Day.  
Special Weekly Rates.

---

---

QUEEN'S HOTEL, TROUT LAKE

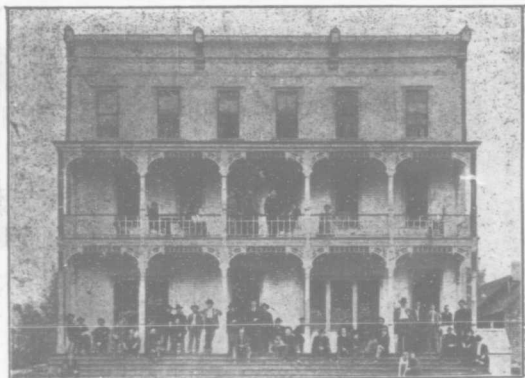
JULY 20, 1914



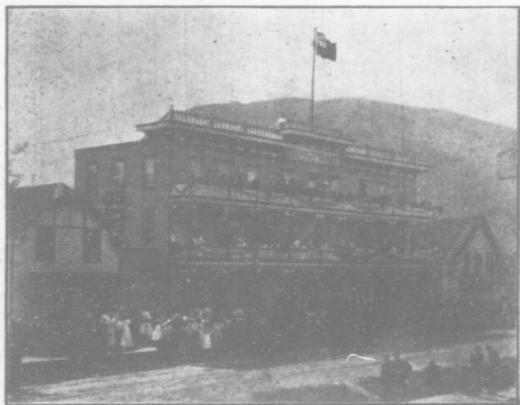
HUME BLOCK, REVELSTOKE.



GROUP OF C. P. R. ENGINEERS.



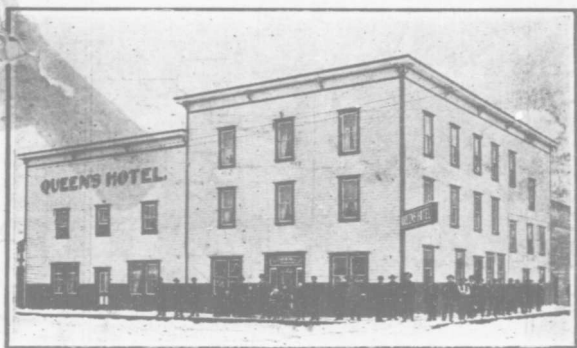
CITY HOTEL REVELSTOKE.



CENTRAL HOTEL, REVELSTOKE, ON RACE DAY.



UNION HOTEL, REVELSTOKE.



QUEEN'S HOTEL, REVELSTOKE.

# The Revelstoke Navigation Co., Ltd.

---

---

Steamer Revelstoke is operated during months of May, June, July, August and September, between Revelstoke and La Porte on Columbia River. Fifty-five miles of the finest scenery in the Province traversed by this route.

The round trip is made in one day. The Steamer has comfortable dining and sleeping accommodation.



---

---

**SAILINGS TUESDAYS AND FRIDAYS.**

ESTABLISHED 1894.

# THE KOOTENAY MAIL

ILLUSTRATED PAPER.

SUBSCRIPTION, \$2.00 PER YEAR.

The Oldest Established Paper in North Kootenay. Published Weekly on Saturdays by

THE KOOTENAY MAIL PUBLISHING COMPANY, LIMITED,

Dealers in Printing and Wrapping Papers and Paper Bags, Loose Leaf

Account and Duplicate Counter Check Systems. Agents for

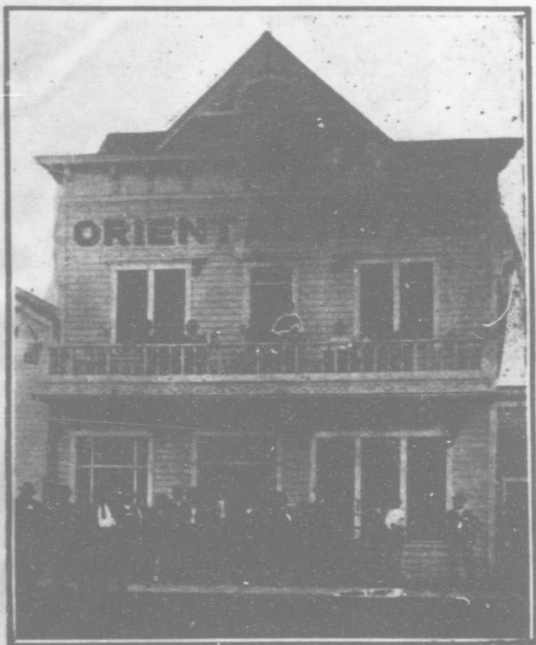
Tengwall and Opalla Patent Loose Leaf Files, Ledgers

and Billing Systems. Illustrated Work a Specialty.

PHONE NUMBER 13.

P. O. BOX NUMBER 70.

REVELSTOKE, B. C.



ORIENTAL HOTEL, REVELSTOKE.



## LAWRENCE HARDWARE Co.

Capital

Dealers in Hardware  
Stoves and Tinware  
Minors, Lumbermen's  
and Mill Supplies,  
etc.

Painting & Plastering, Paper  
Work, Blinds, Work and Re-  
pairs, Electric Wiring & Shades.

ESTIMATES GIVEN

Mail Orders receive Prompt and  
Careful Attention

Phone 21, P. O. Drawer 181, Greenville, S.C.

Homes Furnished on  
Monthly Payments.

## FURNITURE

Carpets, Linoleums, Wall  
Paper, Oilcloths, etc. Sewing  
Machines, Refectory Plans.

R. HOWSON & Co.,

Furniture Dealers & Builders.