

**CIHM
Microfiche
Series
(Monographs)**

**ICMH
Collection de
microfiches
(monographies)**



Canadian Institute for Historical Microreproductions / Institut canadien de microreproductions historiques

© 1994

Technical and Bibliographic Notes / Notes techniques et bibliographiques

The Institute has attempted to obtain the best original copy available for filming. Features of this copy which may be bibliographically unique, which may alter any of the images in the reproduction, or which may significantly change the usual method of filming, are checked below.

L'Institut a microfilmé le meilleur exemplaire qu'il lui a été possible de se procurer. Les détails de cet exemplaire qui sont peut-être uniques du point de vue bibliographique, qui peuvent modifier une image reproduite, ou qui peuvent exiger une modification dans la méthode normale de filmage sont indiqués ci-dessous.

- Coloured covers/
Couverture de couleur
- Covers damaged/
Couverture endommagée
- Covers restored and/or laminated/
Couverture restaurée et/ou pelliculée
- Cover title missing/
Le titre de couverture manque
- Coloured maps/
Cartes géographiques en couleur
- Coloured ink (i.e. other than blue or black)/
Encre de couleur (i.e. autre que bleue ou noire)
- Coloured plates and/or illustrations/
Planches et/ou illustrations en couleur
- Bound with other material/
Relié avec d'autres documents
- Tight binding may cause shadows or distortion
along interior margin/
La reliure serrée peut causer de l'ombre ou de la
distorsion le long de la marge intérieure
- Blank leaves added during restoration may appear
within the text. Whenever possible, these have
been omitted from filming/
Il se peut que certaines pages blanches ajoutées
lors d'une restauration apparaissent dans le texte,
mais, lorsque cela était possible, ces pages n'ont
pas été filmées.
- Additional comments: /
Commentaires supplémentaires:

- Coloured pages/
Pages de couleur
- Pages damaged/
Pages endommagées
- Pages restored and/or laminated/
Pages restaurées et/ou pelliculées
- Pages discoloured, stained or foxed/
Pages décolorées, tachetées ou piquées
- Pages detached/
Pages détachées
- Showthrough/
Transparence
- Quality of print varies/
Qualité inégale de l'impression
- Continuous pagination/
Pagination continue
- Includes index(es)/
Comprend un (des) index
- Title on header taken from: /
Le titre de l'en-tête provient:
- Title page of issue/
Page de titre de la livraison
- Caption of issue/
Titre de départ de la livraison
- Masthead/
Générique (périodiques) de la livraison

This item is filmed at the reduction ratio checked below/
Ce document est filmé au taux de réduction indiqué ci-dessous.

10X	12X	14X	16X	18X	20X	22X	24X	26X	28X	30X	32X
<input type="checkbox"/>	<input type="checkbox"/>	<input type="checkbox"/>	<input type="checkbox"/>	<input type="checkbox"/>	<input type="checkbox"/>	<input type="checkbox"/>	<input checked="" type="checkbox"/>	<input type="checkbox"/>	<input type="checkbox"/>	<input type="checkbox"/>	<input type="checkbox"/>

The copy filmed here has been reproduced thanks to the generosity of:

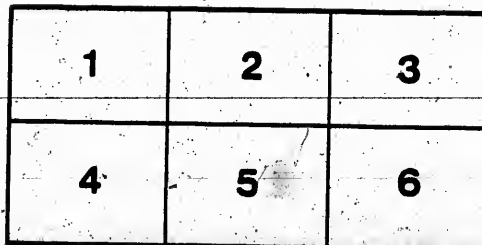
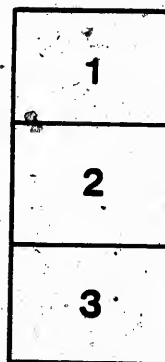
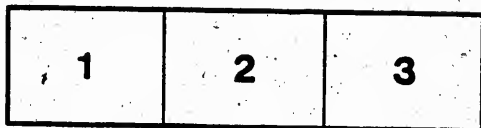
Archives of Ontario
Toronto

The images appearing here are the best quality possible considering the condition and legibility of the original copy and in keeping with the filming contract specifications.

Original copies in printed paper covers are filmed beginning with the front cover and ending on the last page with a printed or illustrated impression, or the back cover when appropriate. All other original copies are filmed beginning on the first page with a printed or illustrated impression, and ending on the last page with a printed or illustrated impression.

The last recorded frame on each microfiche shall contain the symbol \rightarrow (meaning "CONTINUED"), or the symbol ∇ (meaning "END"), whichever applies.

Maps, plates, charts, etc., may be filmed at different reduction ratios. Those too large to be entirely included in one exposure are filmed beginning in the upper left hand corner, left to right and top to bottom, as many frames as required. The following diagrams illustrate the method:



L'exemplaire filmé fut reproduit grâce à la générosité de:

Archives of Ontario
Toronto

Les images suivantes ont été reproduites avec le plus grand soin, compte tenu de la condition et de la netteté de l'exemplaire filmé, et en conformité avec les conditions du contrat de filmage.

Les exemplaires originaux dont la couverture en papier est imprimée sont filmés en commençant par le premier plat et en terminant soit par la dernière page qui comporte une empreinte d'impression ou d'illustration, soit par le second plat, selon le cas. Tous les autres exemplaires originaux sont filmés en commençant par la première page qui comporte une empreinte d'impression ou d'illustration et en terminant par la dernière page qui comporte une telle empreinte.

Un des symboles suivants apparaîtra sur la dernière image de chaque microfiche, selon le cas: le symbole \rightarrow signifie "A SUIVRE", le symbole ∇ signifie "FIN".

Les cartes, planches, tableaux, etc., peuvent être filmés à des taux de réduction différents. Lorsque le document est trop grand pour être reproduit en un seul cliché, il est filmé à partir de l'angle supérieur gauche, de gauche à droite, et de haut en bas; en prenant le nombre d'images nécessaire. Les diagrammes suivants illustrent la méthode.

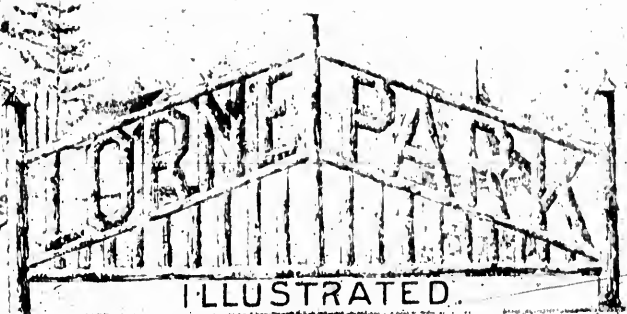
MICROCOPY RESOLUTION TEST CHART

(ANSI and ISO TEST CHART No. 2)



APPLIED IMAGE Inc

1653 East Main Street
Rochester, New York 14609 USA
(716) 482-0300 - Phone
(716) 288-5989 - Fax



Lorne

Sewing : Machines

◆
Three . .
. . Questions . .
. . to ladies . .

1st. Do you prefer
a Machine with
an Oscillating Shuttle?

2nd. Or with a
Vibrating Shuttle?

3rd. Or an Automatic
with Single Thread?



We make them all.



◆
Eight
Million
sold
attest
the
popularity
of our
Machines.

We guarantee
perfection.

Agencies
everywhere.



The Singer Manufacturing Company

No. : 66 King : Street : West, -- TORONTO, : ONTARIO

Toronto and Lorne Park Summer Resort Co.

:: INCORPORATED : 1886 ::

This Company was organized for the purpose of buying, improving and operating Lorne Park as a Summer Resort.

::: GENERAL FEATURES OF THE PARK :::

The superior advantages possessed by Lorne Park as a Summer Resort are year by year becoming more generally known and appreciated. It is most conveniently situated on the north shore of Lake Ontario, about 17 miles south west of Toronto, and may be reached by railway, steamboat or carriage. While specially adapted for those whose business in the city demands their daily attention, its healthfulness and picturesque surroundings render it a most desirable retreat for all who may wish to enjoy a restful and charming summer home.

The domain of the Company has recently been considerably extended toward the north east, and this delightful resort now embraces about 90 acres, more than half of which has been reserved for terraces, avenues, pleasure grounds and woodland rambles, the residue being laid out into cottage lots. The Park is thickly wooded, a large proportion of the trees being Norway pines, which are valuable for their health-giving properties.

The water approach to the Park is striking, the cliffs fronting the lake being at some points fully 40 feet in height. The ground rises gently higher and higher until the Lake Shore Road is reached. Most of the intervening area is table land, but there are two ravines almost encircling the Park, and in these are being laid out pretty drives and walks. The soil, consisting of a sandy loam, is porous and dries quickly after the heaviest fall of rain.

From the first exploration and survey of the Park by the promoters, the enthusiasm has steadily increased, and those who visit it from time to time, or sojourn there for the summer, express their highest admiration of the place, both for its healthfulness and beauty.

Nowhere in this vicinity can there be found a more delightful combination of forest and lawn, lake scenery and landscape. There are secluded groves and beautiful walks in all directions throughout the Park, and nearly everywhere an enchanting glimpse of the blue waters of Ontario opens upon the vision, including a distant view of our "Queen City," with its numerous church spires and stately buildings. On a moonlight night, when the silvery waters are illumined, the tranquil beauty of the scene is entrancing.

OUR advancing knowledge of the actual food-needs of the body, and corresponding advance in our food preparations, are giving to dietetics in the treatment of disease an importance second only to medicinal treatment."—*Dr. J. Milner Footehill, on the 'Dietetic Treatment of Disease.'*

Maltine

The Most Important Constructive Agent Known to the Medical Profession

A DIGESTANT, and at the same time a food. While, therefore, it assists in carrying out the ultimate digestion of starchy foods, itself also contributes largely to the nourishment of the tissues.

MALTINE contains, unimpaired and in highly concentrated form, the whole of the valuable materials which it is possible to extract from Malted Wheat, Malted Oats and Malted Barley.

"A most excellent nutritive tonic, and will be found most valuable in the treatment of nervous prostration, general debility and exhaustion, as also in lingering convalescence from fevers and other depressing affections. The combination with Pepsin and Pancreatine is invaluable in the treatment of Dyspepsia."—*Canada Lancet.*

FOR SALE BY ALL DRUGGISTS **Maltine Manufacturing Co., LONDON AND NEW YORK**

Canada Branch, R. L. GIBSON, 30 WELLINGTON ST. EAST, TORONTO



: : LAKE : SHORE : ROAD : ENTRANCE : :
(G. T. R. Station 300 yards distant)



© © © AUTOMATIC © © ©

Swing and Hammock Chair

IT IS THE BEST AND CHEAPEST EVER OFFERED TO
THE PUBLIC FOR SOLID COMFORT AND REST,
AND DIFFERS FROM ALL OTHERS, BEING

A Chair, Swing and Hammock Combined

It is adapted to the House, Lawn, Porch, Camp, etc., and is
far superior to the ordinary Hammock in every way.

..... COMBINATION

Picket Wire Fence

Cheapest, Strongest, Best for Farms, Gardens,
Orchards, Fruit Farms, Town
and City Lots.

Drop us a Card for Price List



MANUFACTURED
ONLY BY

G. J. DANIELS & CO'Y.

151 RIVER STREET
TORONTO

: : **SUMMER : RESIDENCES** : :

The **PARK** Lots which have been laid out for residential purposes are considerably larger than those in most Summer Resorts, the area of many of our lots being more than half an acre. Quite an addition has been made this year to the list of beautiful cottages, with their broad verandas and spacious balconies—a feature of Lorne Park; and other building contracts are now being arranged. The lake water and drainage systems in connection with the cottages and other buildings are complete and efficient. The residents of the Park are abundantly supplied with fresh meat, bread, milk, fruit and vegetables in great variety at reasonable prices. Ice is delivered at the cottages every morning.

: : **THE : HOTEL** : :

This **SEASON** a special attraction of this pleasure resort is its hotel, which is leased to Mr. Thomas Anderton, for several years past the popular lessee and manager of the far famed Bodegas Restaurant, who has no superior as a caterer in the city of Toronto. Mr. Anderton keeps a first-class house, and the table is supplied with every delicacy of the season. The sleeping apartments are well furnished, and the comfort and enjoyment of the guests constantly served. The Hotel has lately been connected with the system of the Bell Telephone Company, and a Post Office is established with three mails daily in each direction. Letters should be addressed: "Lorne Park, Ont., via Toronto." The Globe Fast Train passes the Park about 4 a.m., and the newspaper train an hour later, enabling the guests to con the papers at the breakfast-table. A magnificent terrace, wooded with maple, oak, birch and pine, stretches between the Hotel and the precipice, affording a delightful opportunity for hammocking and promenading in full view of the beautiful lake.

: : **BOATING : BATHING : AND : FISHING** : :

Excellent BOATING and exhilarating bathing may be indulged in with safety, every facility therefor having been provided; while a short distance up the River Credit, less than a couple of miles from the Park, there is capital fishing.

: : : **AMUSEMENTS** : : :

The **BALL-GROUND** has been considerably enlarged so as to give ample space for Lacrosse and Base ball. Lawn Bowls, Quoits, Lawn Tennis, Croquet, Swings, etc., have been provided; while frequent Evening Entertainments and other amusements and attractions are in contemplation.



LADIES

THE ONLY APPLIANCES

Having Absorbent Qualities.



GENTS

A NEW LEASE OF LIFE.

A CURE WITHOUT MEDICINE

All Diseases are Cured by our Medicated Electric Belt and Appliances. On the principle that Electricity is Life, our appliances are brought directly into contact with the diseased part. They act as perfect absorbents, by destroying the germs of disease and removing all impurities from the body. Diseases are successfully treated by correspondence, as our goods can be applied at home.

--- READ OUR HOME REFERENCES ---

HENRY CONWAY, 44 Centre Street, cured of intermittent fever in ten days, one year's standing; used Actina and Belt. **MRS. S. M. WHITEHEAD**, 678 Jarvis Street, a sufferer for years, could not be induced to part with our Electric Belt. **WM. J. FULLER**, 444 Centre Street, coughed eighteen months, cured in two treatments by Actina. **J. McQUAIG**, grain merchant, cured of rheumatism in the shoulders, after all others failed. **JAS. WEEKS**, Parkdale, sciatica and lame back, cured in fifteen days. **WM. NELLES**, Thessalon, cured of lame back, pain in breast and dyspepsia, after being laid up all winter. **MRS. J. SWIFT**, 87 Agnes Street, cured of sciatica in six weeks. **D. K. BELL**, 135 Simcoe Street, cured of one year's sleeplessness, in three days, by wearing Lung Shield and using Actina. **L. B. McKay**, Queen Street, tobacconist, cured of headache, after years of suffering. **MISS ANNIE WRAY**, Manning Avenue, music teacher, finds Actina invaluable. **MR. GREEN**, Thessalon, cured of pain in the back and kidneys, said to be Bright's disease. **E. RIGGS**, 220 Adelaide Street West, cured of catarrh, by Actina. **G. S. PARDEE**, 51 Beverley Street, cured of lame back, after all medicines had failed. **MISS DELLA CLAYTON**, Toronto, cured of paralysis, after being in the hospital nine months. **MRS. ANDREWS**, Thessalon, cured of rheumatism and hip disease; could not walk without a cane. **JOHN THOMPSON**, 100 Adelaide Street West, cured of a tumor in the eye, in two weeks, by Actina. **MISS E. M. FORSYTH**, 15 Brant Street, reports a lump drawn from her hand 12 years' standing. **MRS. HATT**, 342 St. Clarence Avenue, Toronto, cured of BLOOD POISON.



"Your Belt and Suspensory have cured me of impotency," writes G. A. "I would not be without your Belt and Suspensory for \$50," writes J. McG. "For general debility your Belt and Suspensory are cheap at any price," says Mr. S. M. C. [These letters are on file.]

Mr. McCLINCHY, Thessalon, cured of rheumatism in back and legs, very bad case; laid up a long time. [Many more such testimonials on file.]

Catarrh impossible under the influence of Actina. Actina will cure all diseases of the eye.

Send for Illustrated Book and Journal, giving full list, Free.

No Fancy Prices.

Combined Belt and Suspensory, only \$5.00—Certain Cure

... NO VINEGAR OR ACID USED ...

Mention this Book.

W. T. BAER & CO, 155 Queen St. West, Toronto





:: LAKE : VIEW : ARBOR ::



1114 PHOTO 476 G.

::: SUNDAY SERVICES :::

Every SUNDAY Afternoon during the season one of the city pastors conducts a service in the large pavilion, in which our friends from the vicinity are cordially welcomed to join with the residents of the Park. In the morning a Sunday School is held in the hotel, and in the evening a Service of Song. With the exception of the hour for the afternoon service, the gates of the Park are kept strictly closed, thus ensuring to the residents the enjoyment of a quiet and restful Sabbath day, which is one of the greatest charms of Lorne Park.

::: PICNIC GROUNDS :::

The condition of the picnic grounds (about 25 acres in extent) has been much improved since last season, and every opportunity is afforded Societies and Schools for enjoying their annual outings. Rustic pavilions and dining-halls, with kitchens attached, are provided; and obliging attendants, with an abundant supply of hot and cold water, are at the service of picnic parties. A stable and driving stand may be found on entering the Park by those visitors who drive from the city or neighborhood.

One of the cardinal principles of the Company is that **No Intoxicating Liquors** are allowed, under any circumstances, to be sold at the hotel or refreshment booths, or on board the steamer running to the Park.

::: RAILWAY AND STEAMBOAT COMMUNICATION :::

The Trains of the Grand Trunk Railway, stopping at the Park, leave the Union Station daily (Sundays excepted) at 6.55 a.m., 12.20 and 4.55 p.m., and arrive in the city from the Park at 8.45 a.m., 5.30 p.m. Commutation fare, 15 cents each way. On the Queen's Birthday, Dominion Day and the Civic Holiday the return fare is 45 cents. Other days during the season, the fare is 55 cents; tickets sold on Saturday being good to return on the following Monday.

An Omnibus is run in connection with all trains between the Hotel and the Railway Station, at city street car rates. The Steamer "MERRITT," Captain Hudgin, leaves Milloy's Wharf, Yonge Street, at 10 a.m., 2 p.m. and 5.30 p.m., returning from the Park at 12.00 noon, 4.00 p.m. and 8.00 p.m. Fare for the round trip, 25 cents for adults and 15 cents for children. Books of 20 tickets for \$4.00. Liberal arrangements are made with Societies and Schools.

::: MANAGEMENT :::

FREDERIC ROPER, President
JOHN EARLS, Vice-President
PH. JACOBI, Treasurer

J. W. STOCKWELL
W. R. HENDERSON
JAS. B. BOUSTEAD
GEO. L. HILLMAN
EDMUND BURKE

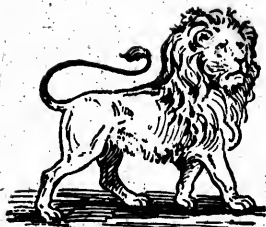
Directors.

GEORGE D. PERRY, Secretary
NEVILLE McWHINNEY & RIDLEY, Solicitors
LANGLEY & BURKE, Architects
THE TRADERS BANK, Bankers

Excursion and Ticket Agent's Office : : : Milloy's Wharf, Yonge St.

OFFICE HOURS { 9:00 a.m. to 12:00 noon.
1:00 p.m. to 2:00 p.m.
5:00 p.m. to 6:00 p.m.

TELEPHONE 669



R. WALKER & SONS, TORONTO

:: THE GOLDEN LION ::

Staple : Dry : Goods : and : Holiday : Novelties

FLANNEL DRESS GOODS—For the Seaside, marked down to 15 cts. a yard. Fresh, New Goods. This season's importation.

CEYLON FLANNEL—Fashionable and Dressy, at 25 cts. a yard.

Boating Shawls, in great variety

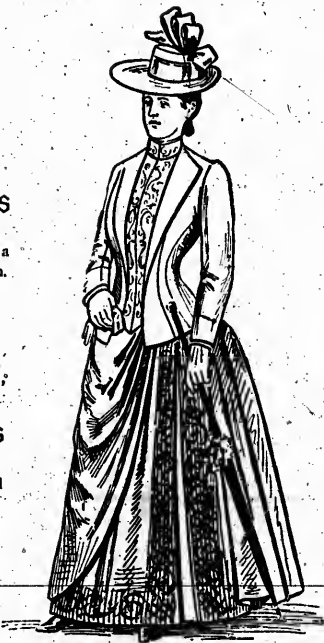
All Sizes and Shades. Extra sizes in the following Colors:—Apricot, Coral, Cream and White—prices, 75c. and \$1.00.

Large Assortment Dressing and Tea Gowns

Dressing Gowns, in Pale Pinks, Blues, Terra Cotta, etc., \$3.50 upwards.
Tea Gowns, every new shade, with Plush Reversible Collars, Cuffs and Belts, \$6.50 up.

Water-Proof Goods of every description.

R. WALKER & SONS, King Street East





:: LORNE PARK HOTEL ::

EDGAR'S CRYSTAL HALL

ESTABLISHED 1857

John Edgar & Son

IMPORTERS OF

: CROCKERY, : CHINA :
: GLASS, : FANCY : GOODS :
: PLATED : WARE :
: LAMPS :

Table Cutlery, etc., etc.

No. 97 King Street East

Toronto

Wm. Beatty & Son

IMPORTERS : : :
WHOLESALE : AND : RETAIL : DEALERS :
: : : IN : :

CARPETS : : OILCLOTHS

LINOLEUMS

: CURTAIN MATERIALS :

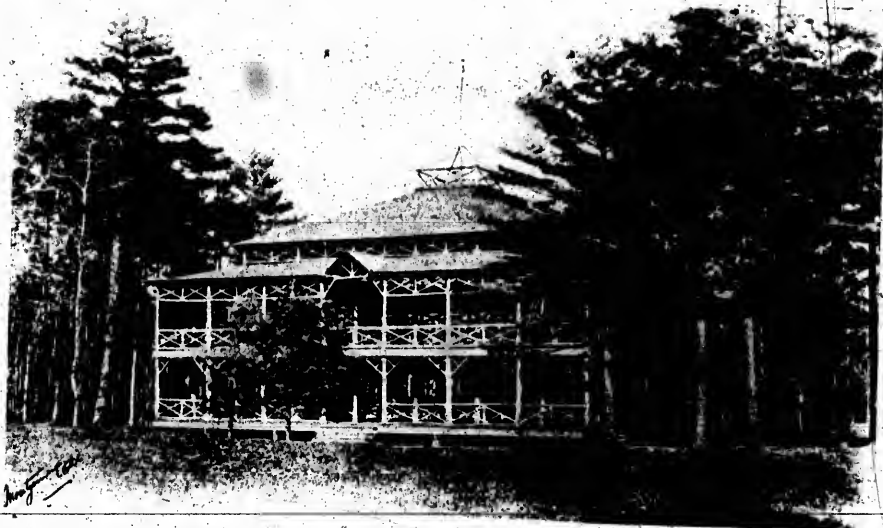
WINDOW BLINDS

: : : Etc., Etc. : : :

CHINA MATTINGS, in all the newest
designs, from 25c. per yard up.

3 : King : Street : East

: : TORONTO : :



:: PICNIC : PAVILION ::

CHARLES WILSON'S



AROMATIC

Ginger + Ale

Charles Wilson's Ginger Ale is not fermented, consequently is not alcoholic, is eminently warming and invigorating, yet perfectly free from any intoxicating quality.

AWARDS FOR SPECIAL EXCELLENCE:

International Exhibition, Philadelphia, U. S., 1876. :: International Exhibition, Sydney, New South Wales, 1877

GINGER ALE

LEMON SODA

GINGER ALE, in Quarts

POTASSA WATER

DOUBLE SODA WATER

SARSAPARILLA

SELTZER WATER

VICHY WATER

TO BE HAD OF ALL FIRST-CLASS GROCERS

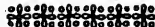
KEEP IN A COOL PLACE—CORKS DOWN

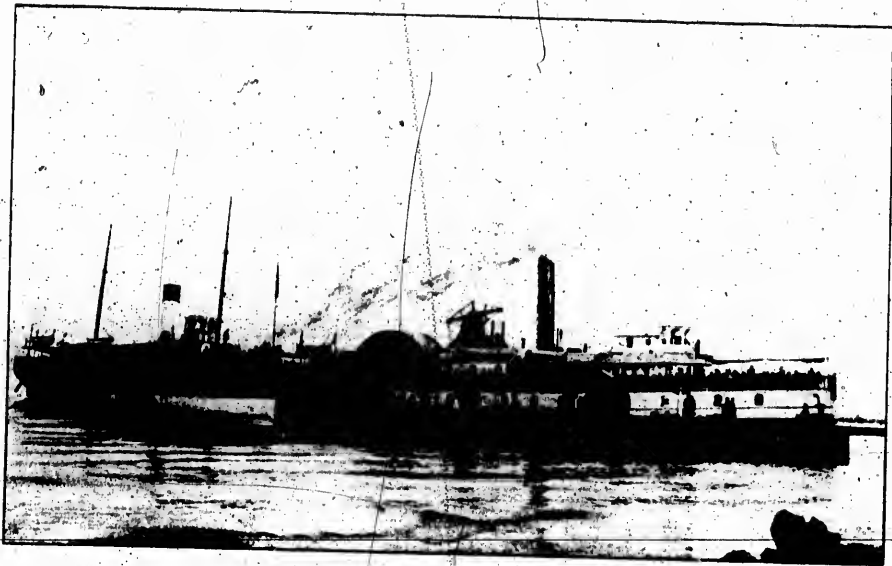
No Steamer, Passenger Ship or Yacht should be without a supply of Charles Wilson's Aromatic Ginger Ale, Seltzer and Potassa Water.

519 Sherbourne Street

TORONTO, ONT.

TELEPHONE No. 3004





: PIER AT LORNE PARK :

The Chas. Rogers & Sons Co. (LTD.)

... LATE OF R. HAY & CO. ...

95 AND 97 YONGE STREET, TORONTO

... MANUFACTURERS ...

*Fine
Artistic
Furniture*



*Tasteful
Cottage
Furniture*

... FIRST-CLASS : WORKMANSHIP ...

... PRICES : REASONABLE ...



：“BUENAVISTA,” (SIDE VIEW) : RESIDENCE : OF : MR. : E. : ROPER. :

THE
Temperance and General
Life
Assurance Company

The Only Canadian Life Company which gives

TOTAL ABSTAINERS

The Benefit of Their Greater Longevity.

BEAR THIS IN MIND

HEAD OFFICE, MANNING ARCADE
22 to 28 King St. W., Toronto

HON. GEO. W. ROSS,
President

H. O'HARA,
Man. Director

GOING TO AND FROM
LORNE PARK
EITHER BY TRAIN OR BOAT IS NOT
ALWAYS FREE FROM DANGER

THE
Canada Accident
Assurance Company

Provides a remedy, if serious accidents occur,
by its Liberal Policy covering indemnity
for injuries received in travel, etc.

GET A POLICY WITHOUT DELAY

HEAD OFFICE
22 to 28 King St. Toronto

HON. GEO. W. ROSS,
President

H. O'HARA,
Man. Director



:: "EARLSCOURT," : RESIDENCE : OF : MR. : JOHN : EARLS : :

This Book is from the Press of Bingham & Webber

J. A. Whatmough

DEALER AND
MANUFACTURER OF

REFRIGERATORS, WATER FILTERS
GALVANIZED ROOFING, :::: TINWARE
EAVE CONDUCTORS, ETC.

HEADQUARTERS FOR

STOVES --- RANGES
FURNACES

Iron Bedsteads, :: Mangles, :: Cutlery, :: Lamps and
Oils, :: and General Furnishings.

--- Baby : Carriages ---

126 King Street East

--- TORONTO ---

--- NOTICE ---

TO : WHOM : IT : MAY : CONCERN

We to-day carry the largest and best assorted
stock of

BUILDERS'
HARDWARE

Kept by any house in Canada.

Kindly call and consult us before placing your orders in
this line.

IF NOT LIVING IN TORONTO, WRITE US.

Aikenhead - & - Crombie

HARDWARE MERCHANTS

Cor. King and Yonge Sts., --- Toronto



：“MYRTLE : COTTAGE,” : RESIDENCE : OF : MR. : JOHN : W. : STOCKWELL. : :

* BINGHAM

& * WEBBER ©

The Superior Catalogues lately issued
by several leading Manufacturers
of Canada are from our Press.



C. D. BINGHAM
R. C. WEBBER

ARE THE
PREMIER CATALOGUE PRINTERS,
AND PIONEERS OF
ART PRINTING IN CANADA.
"THEIR WORK SPEAKS THEIR WORTH."
THEIR TELEPHONE NUMBER IS 50.
THEIR OFFICE IS IN LAKESIDE COURT

251 2 ADELAIDE STREET EAST - - - TORONTO



“MASSAWIPPI,” RESIDENCE OF MR. W. R. HENDERSON

-- D. PIKE --

MANUFACTURER OF

TENTS ---

--- AWNINGS

FLAGS ---

--- AND SAILS

Horse and Waggon Covers, Life Preservers

TENTS TO RENT

157 King Street East

TORONTO, ONT.

Different : Grades : of : Canvas : always : on : hand

:: Lear's :

--- NOTED ---

Gas Fixture
EMPORIUM

For all the Latest Designs
and Novelties in

DRAWING, : DINING-ROOM, : CHURCH, : HALL,
AND : STORE

:: Gas Fixtures and Globes ::



19 AND 21

RICHMOND ST. WEST, TORONTO

... Endless Variety to choose from ...

... A Pleasure to Show Goods ... Come and See Us



：“LINSTOCK VILLA,” RESIDENCE OF MR. JAS. B. BOUSTEAD :

91 Yonge St.

THE E. & C. GURNEY CO. (Ltd.)

91 Yonge St.

.. RANGES ..

.. HEATING ..

.. STOVES ..

... COOKING ...

.. STOVES ..

Largest Variety
in the City



.. KITCHEN ..

- FURNISHING -

.. GOODS ..

.. Splendid ..

- Assortment -

Prices

- Reasonable -

The E. & C. Gurney Co. (Ltd.) 91 Yonge St. Toronto, Ont.



“BRIGHTSIDE,” RESIDENCE OF MR. W. H. ORR.

ELIAS ROGERS & CO.

-- BEST QUALITY --
✿

COAL AND WOOD

::: LOWEST : PRICES :::

BRANCH OFFICES :

409 Yonge Street 793 Yonge Street
578 Queen Street West
 274 Queen Street East

YARDS AND BRANCH OFFICES :

Scranton Dock, Foot of Church Street . . .
 . . . Esplanade Street, near Berkeley Street
Bathurst Street, nearly opposite Front Street . . .



Head Office: 20 King Street West

TORONTO, ONT.



：“ARGYLE : COTTAGE,” : RESIDENCE : OF : MR. : PAUL : CAMPBELL .



For : Beautifying : and : Preserving : the :
Complexion :

REMOVING TAN, SUNBURN, FRECKLES AND ALL
ROUGHNESS OF THE SKIN.

NOW to be beautiful, and consequently powerful, is a question that has engrossed the female mind in all ages. Beautiful women have controlled the fate of dynasties and the lives of men from the earliest days to the present time.

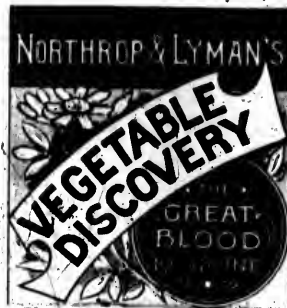
It has been said that beauty is only skin deep. If that is a fact, we can easily make our skin beautiful. Ladies who leave the city for the summer need not carry immense sunshades with them to protect their complexion. Let them take and use a bottle of the **PERSIAN BEAUTIFIER**.

Ladies who remain much indoors during the winter months find that the skin becomes rough, by the slightest exposure to the air. This can be avoided by the use of the **Persian Beautifier**.

A young lady from Nevada writes:—"Send me two bottles of the Persian Beautifier at once, per express, as I must have it at any cost. I used a bottle while in Canada, on a visit last summer, and I don't think there is anything equal to it."

--- PRICE, 50 CENTS ---

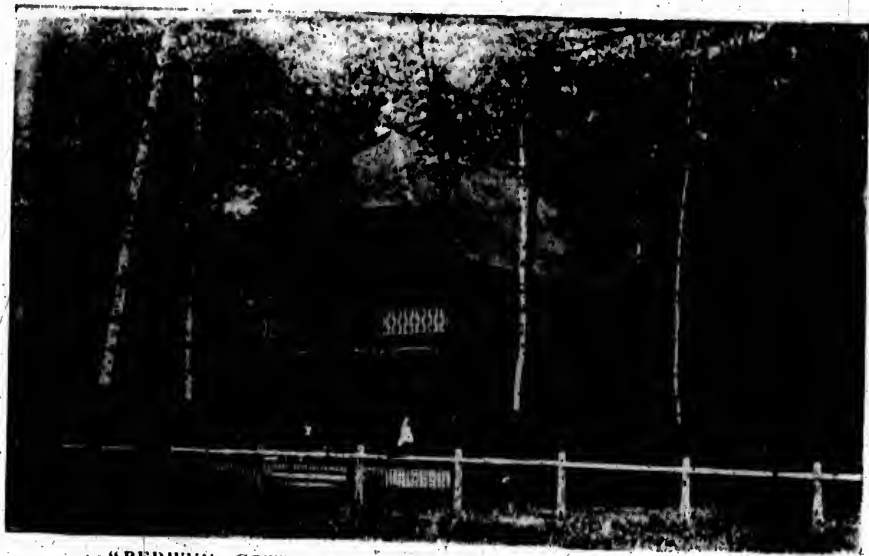
--- NORTHROP & LYMAN CO., Proprietors, Toronto ---



A Purely Vegetable Compound that cures every kind of unhealthy Humor, and every disease that depends on Impurity of the Blood, where the Lungs, Liver and Kidneys, and other vital organs, are not wasted beyond the hope of repair. For the cure of Scrofula, Erysipelas, Salt Rheum, Eczema, Scald-Head, Scaly Eruption of the Skin, Ulcers and Fever Sores of all kinds; Boils, Humor in the Mouth and Stomach or Eyes, Sore Ears, Eruption on the Head, and Pimples or Blisters on the Face, it stands pre-eminently at the head of other remedies.

In the cure of Rheumatism, Dyspepsia, Liver Complaint, and diseases of the Kidneys and Bladder, its effects are surprising to all. For regulating the Bowels, and Curing Biliousness, Headache, Sick Headache, Neuralgia, Female Weakness, Nervousness, Pains in the Side, Loins and Back, and general Weakness and Debility, its curative powers are remarkable.

People who Read, and Reflect, after reading, upon the many published testimonials regarding Northrop & Lyman's Vegetable Discovery and Dyspeptic Cure, can scarcely fail to perceive that evidence so positive and concurrent could not be adduced in behalf of a remedy of doubtful efficacy.



：“BERWYN COTTAGE,” RESIDENCE OF MR. W. J. DAVIS.：

WONDERFUL GAS

The Crystal Carbon Light

Constitutes a scientific method of producing
a dazzling white
and perfectly steady light from
ordinary gas.



To users these fixtures actually
cost no money after a few months' use

WHY?

Because Crystal Carbon under
actual test enriches ordinary gas over
400 per cent.

It is the future light for Churches, Halls, Stores and Private Houses

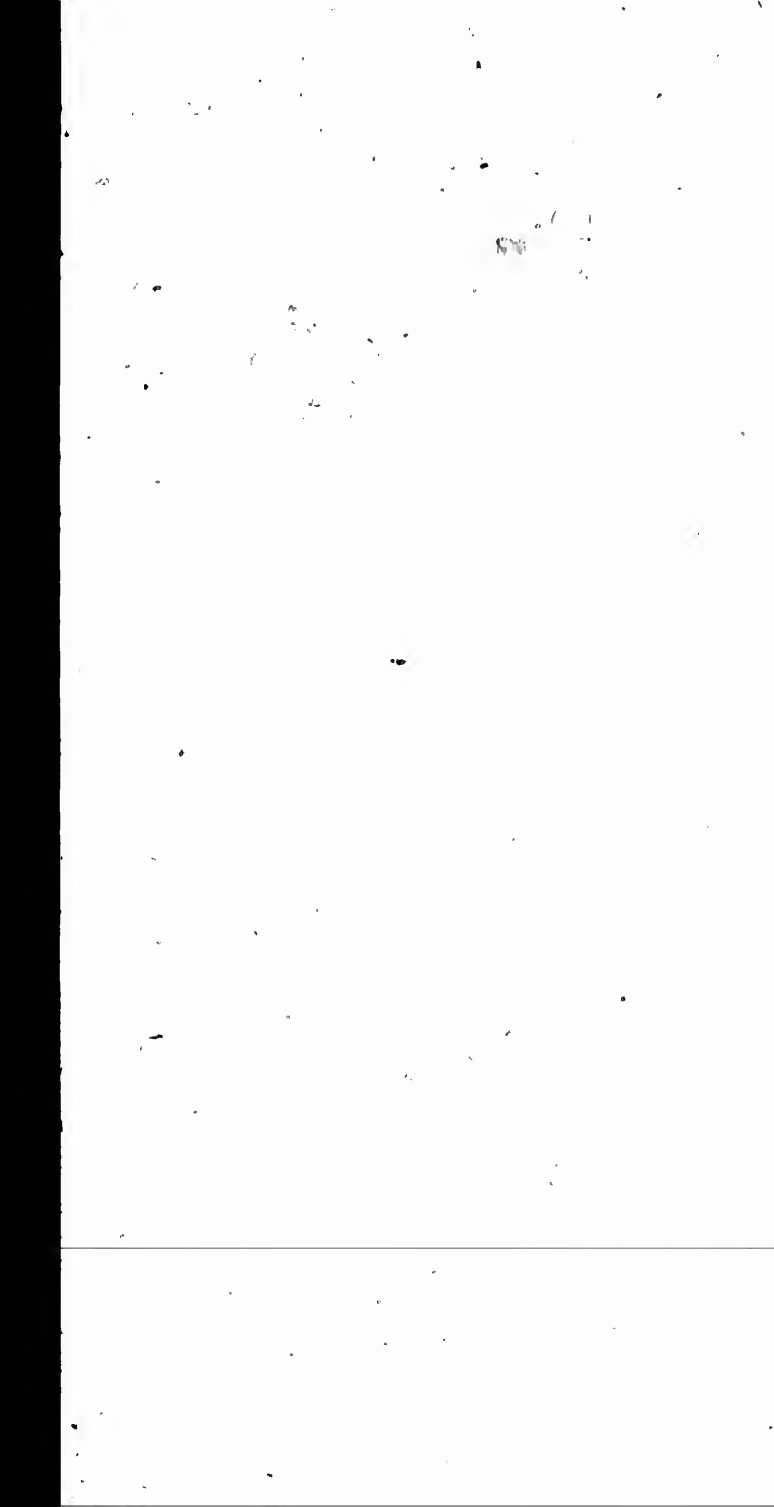
KEITH - & - FITZSIMONS

SOLE AGENTS FOR CANADA

109 King St. West, Toronto



:"GLENVIEW," RESIDENCE OF MR. GEORGE D. PERRY :



- : *Jos. McCausland & Son* : -



Interior Decorators

... AND ...

Art Stained Glass Manufacturers



SEE OUR WALL PAPERS, THEY ARE MODERATE IN PRICE AND SUPERIOR IN DESIGN

All Grades of

--- *House Decorating* ---

... ..

JOS. : McCAUSLAND : & : SON

72 to 76 King Street West



Toronto, Ontario

— 31 —



：“ EHERENFELS,” RESIDENCE OF MR. ROBERT McCAUSLAND ?

:: The Polson Iron Works Co. ::

--- OF TORONTO, (LIMITED) ---

CONSTRUCTORS OF EVERY
DESCRIPTION OF

Steel, Iron, Composite and Wooden Ships

--- MANUFACTURERS OF ---

Steam and Fore-and-Aft Compound and Triple Expansion Marine Engines. :: $\frac{3}{8}$ | The Brown Automatic Engines, from 20 to 1,000 h.p. for stationary purposes. ::

The best equipped plant in Canada, including the latest improved hydraulic machinery for the manufacture of modern boilers of all kinds.

Steam : Pumps, : Windlasses, : Winches : and : Marine : Appliances

--- OF EVERY DESCRIPTION ---

Shipbuilding - Works, - Dry - Dock, - and
- Repair - Yard -

● ● Engine - and - Boiler - Works

OWEN SOUND, ONT.

TORONTO : : ONTARIO



.. "PIONNIER VILLA," RESIDENCE OF MR. LOUIS RICHEY ..

C. J. McCUAIG

R. A. MAINWARING

McCuaig & Mainwaring

Real Estate, Financial and Insurance Agents

• •
: 18 : VICTORIA : STREET :

TELEPHONE No. 1284



PURCHASE, SELL AND RENT ALL KINDS OF REAL ESTATE

COLLECT RENTS AND MANAGE ESTATES

NEGOTIATE LOANS ON FARM AND CITY PROPERTY WITHOUT EXPENSE TO THE BORROWER

PURCHASE AND SELL MORTGAGES, DEBENTURES, ETC.

--- MONEY TO LOAN ---

: : 200 : Acres, : subdivided : into : Lots : and : Market : Gardens, : for : Sale : Cheap : :



：“RUSTICO,” RESIDENCE OF MR. THOMAS AIKENHEAD ； ；

This Book is from the Press of Bingham & Welber

JOHN GRAYDON = = = =

--- STREETSVILLE, ONT. ---

⊙ Manufacturer and Builder, Contractor, Etc. ⊙

::: Building Material of all kinds kept constantly on hand :::

--- SAW MILLS ---
SASH AND DOOR FACTORIES --- ● ● At Streetsville, Ont.
--- AND BRICK YARDS --- ● ●

::: Summer Cottages a Specialty :::

--- Nearly all the Cottages illustrated in this book were built by the above firm ---

ALWAYS SATISFACTORY

THE CELEBRATED
COOK'S FRIEND
BAKING POWDER

THE UNIVERSAL
FAVOURITE

INDISPENSABLE

FOR
CAMPS, SUMMER RESORTS,
TRAVELLERS, BACHELORS
AND GENERAL FAMILY USE

SYMINGTON'S
EDINBURGH

COFFEE

PURE COFFEE
COFFEE AND CHICORY



ESSENCE

COFFEE AND MILK
COCOA AND MILK

FOR SALE BY ALL GROCERS

Wholesale Agents—STANWAY & BAYLEY

44 Front St. East, TORONTO

MAKES

Most Delicious Coffee or Cocoa in One Minute



Edwards' Desiccated Soup



FOR

Summer Resorts, : Camping Parties, : Tourists, : Hotel, : Steamboat : and General : Family : Use

--- Makes Delicious Soup in Five Minutes, and as a Seasoning for Gravies, Rissoles, etc., etc., is unrivalled ---

--- RECENT TESTIMONY ---

(From PROF. JOHN BAKER EDWARDS, Public Analyst, Montreal):

I hereby-certify that I have chemically, microscopically and practically tested and tasted several samples of "Edwards' Desiccated Soup," and I find these of excellent quality, and have used them in my own family with entire satisfaction for the past two years.

Wholesome, Nutritive, Antiscurbic and highly Digestive, it will commend itself to *Citizens*, and *Travellers and Campers*, as an excellent food of good quality and of multifarious applications.

I have much pleasure in recommending it upon my own experience.

(Signed) JOHN BAKER EDWARDS, D.C.L. F.C.S.

(From ARTHUR BROWN, M.D., formerly Professor of Obstetrics, in McGill College, and Physician to the Maternity Hospital):

MONTREAL, 27th February, 1880.

I have tried the sample of "Edwards' Desiccated Soup," which has proved itself a very palatable and apparently nutritious article. It makes a *strong, rich soup*, which is *very sustaining and satisfying*.

(Signed) ARTHUR A. BROWN, M.D.

(From T. SIMPSON, M.D., Consulting Physician to the Montreal General Hospital, and to the Western Hospital):

Your sample of "Edwards' Desiccated Soup" has proved the most satisfactory preparation of the sort I have seen. It furnishes a nutritious, tasteful and digestible dish, suitable for certain invalids and convalescents. It is also well adapted for ordinary *household use*, being rich in flavor and pleasant to the palate, and it has the additional valuable qualities of being in a convenient and concentrated form, and requiring only a few minutes to prepare.

(Signed) T. SIMPSON, M.D.

FREDK. K. KING & CO., LIMITED, SOLE MANUFACTURERS,
BELFAST : AND : LONDON

FOR SALE BY ALL GROCERS

Wholesale Depot, 39 St. Sacramento St., Montreal

S. H. WARD, AGENT

