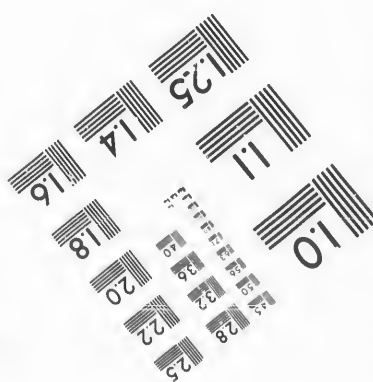
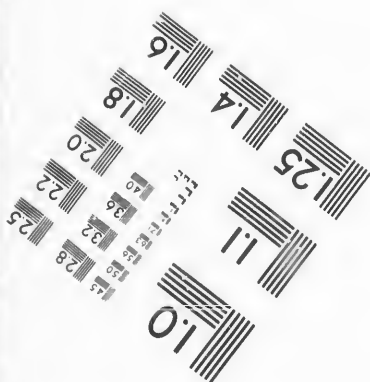
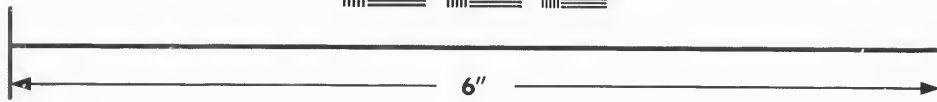
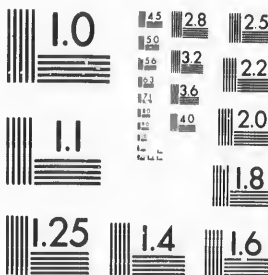


**IMAGE EVALUATION  
TEST TARGET (MT-3)**



**Photographic  
Sciences  
Corporation**

23 WEST MAIN STREET  
WEBSTER, N.Y. 14580  
(716) 872-4503

15 28  
14 32  
13 22  
12 20  
11 18

**CIHM/ICMH  
Microfiche  
Series.**

**CIHM/ICMH  
Collection de  
microfiches.**



Canadian Institute for Historical Microreproductions / Institut canadien de microreproductions historiques

10

**© 1987**

Technical and Bibliographic Notes/Notes techniques et bibliographiques

The Institute has attempted to obtain the best original copy available for filming. Features of this copy which may be bibliographically unique, which may alter any of the images in the reproduction, or which may significantly change the usual method of filming, are checked below.

L'Institut a microfilmé le meilleur exemplaire qu'il lui a été possible de se procurer. Les détails de cet exemplaire qui sont peut-être uniques du point de vue bibliographique, qui peuvent modifier une image reproduite, ou qui peuvent exiger une modification dans la méthode normale de filmage sont indiqués ci-dessous.

- Coloured covers/  
Couverture de couleur
- Covers damaged/  
Couverture endommagée
- Covers restored and/or laminated/  
Couverture restaurée et/ou pelliculée
- Cover title missing/  
Le titre de couverture manque
- Coloured maps/  
Cartes géographiques en couleur
- Coloured ink (i.e. other than blue or black)/  
Encre de couleur (i.e. autre que bleue ou noire)
- Coloured plates and/or illustrations/  
Planches et/ou illustrations en couleur
- Bound with other material/  
Relié avec d'autres documents
- Tight binding may cause shadows or distortion along interior margin/  
La reliure serrée peut causer de l'ombre ou de la distorsion le long de la marge intérieure
- Blank leaves added during restoration may appear within the text. Whenever possible, these have been omitted from filming/  
Il se peut que certaines pages blanches ajoutées lors d'une restauration apparaissent dans le texte, mais, lorsque cela était possible, ces pages n'ont pas été filmées.
- Additional comments:  
Commentaires supplémentaires:

- Coloured pages/  
Pages de couleur
- Pages damaged/  
Pages endommagées
- Pages restored and/or laminated/  
Pages restaurées et/ou pelliculées
- Pages discoloured, stained or foxed/  
Pages décolorées, tachetées ou piquées
- Pages detached/  
Pages détachées
- Showthrough/  
Transparence
- Quality of print varies/  
Qualité inégale de l'impression
- Includes supplementary material/  
Comprend du matériel supplémentaire
- Only edition available/  
Seule édition disponible
- Pages wholly or partially obscured by errata slips, tissues, etc., have been refilmed to ensure the best possible image/  
Les pages totalement ou partiellement obscurcies par un feuillet d'errata, une pelure, etc., ont été filmées à nouveau de façon à obtenir la meilleure image possible.

This item is filmed at the reduction ratio checked below/  
Ce document est filmé au taux de réduction indiqué ci-dessous.

10X	12X	14X	16X	18X	20X	22X	24X	26X	28X	30X	32X
					✓						

The copy filmed here has been reproduced thanks to the generosity of:

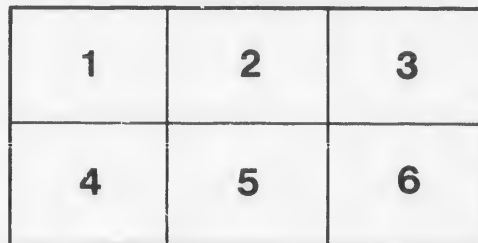
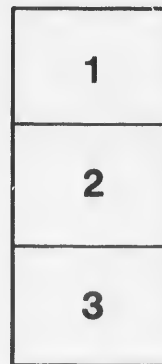
The Nova Scotia  
Legislative Library

The images appearing here are the best quality possible considering the condition and legibility of the original copy and in keeping with the filming contract specifications.

Original copies in printed paper covers are filmed beginning with the front cover and ending on the last page with a printed or illustrated impression, or the back cover when appropriate. All other original copies are filmed beginning on the first page with a printed or illustrated impression, and ending on the last page with a printed or illustrated impression.

The last recorded frame on each microfiche shall contain the symbol  $\rightarrow$  (meaning "CONTINUED"), or the symbol  $\nabla$  (meaning "END"), whichever applies.

Maps, plates, charts, etc., may be filmed at different reduction ratios. Those too large to be entirely included in one exposure are filmed beginning in the upper left hand corner, left to right and top to bottom, as many frames as required. The following diagrams illustrate the method:



L'exemplaire filmé fut reproduit grâce à la générosité de:

The Nova Scotia  
Legislative Library

Les images suivantes ont été reproduites avec le plus grand soin, compte tenu de la condition et de la netteté de l'exemplaire filmé, et en conformité avec les conditions du contrat de filmage.

Les exemplaires originaux dont la couverture en papier est imprimée sont filmés en commençant par le premier plat et en terminant soit par la dernière page qui comporte une empreinte d'impression ou d'illustration, soit par le second plat, selon le cas. Tous les autres exemplaires originaux sont filmés en commençant par la première page qui comporte une empreinte d'impression ou d'illustration et en terminant par la dernière page qui comporte une telle empreinte.

Un des symboles suivants apparaîtra sur la dernière image de chaque microfiche, selon le cas: le symbole  $\rightarrow$  signifie "A SUIVRE", le symbole  $\nabla$  signifie "FIN".

Les cartes, planches, tableaux, etc., peuvent être filmés à des taux de réduction différents. Lorsque le document est trop grand pour être reproduit en un seul cliché, il est filmé à partir de l'angle supérieur gauche, de gauche à droite, et de haut en bas, en prenant le nombre d'images nécessaire. Les diagrammes suivants illustrent la méthode.

crata  
o

elure,  
à

32X

**ROYAL**  
**NOVA SCOTIA YACHT SQUADRON**

STATION: HALIFAX.

**OFFICERS, 1882.**

**Commodore.**

HIS EXCELLENCY THE MARQUIS OF LORNE, K. T., G. C.  
M. G., &C., &C., GOVERNOR-GENERAL OF CANADA.

**Vice-Commodore.**

W. A. CHAUNCY, ESQ., Lieut. Princess of Wales' Regt.

**Rear-Commodore.**

CAPT. S. TROTT.

**Secretary.**

F. C. SUMICHRAST, ESQ.

**Honorary Treasurer.**

W. HEDLEY, ESQ.

**Committee of Management.**

J. E. BUTLER, ESQ. A. E. JONES, ESQ. S. A. WHITE, ESQ.  
A. C. EDWARDS, ESQ. H. E. TYLER, ESQ., Lt. R. E.

**Sailing Committee.**

G. C. S. HANDCOCK, ESQ., Lt. P. W. O. R.  
A. ALLISON, ESQ. D. G. PRINSEP, ESQ., Lt. R. A. F. S. WEST, ESQ.  
W. H. TROOP, ESQ. J. FRASER, ESQ.

**Measurers.**

J. E. BUTLER, ESQ. G. H. LUKE, ESQ.

**Deputy Measurers.**

F. W. HINDMAN, ESQ., Charlottetown, P. E. I.  
E. DOWLING, ESQ., Lunenburg. J. YORSTON, ESQ., Pictou.

**Hon. Agent.**

T. MANNING, New York.

HALIFAX PUBLIC LIBRARY

5932

# MEMBERS OF THE SQUADRON.

*Members who have held or hold Flag Rank are distinguished by a †*

## HONORARY MEMBERS.

No.	DATE OF ADMISSION.	NAME.	RESIDENCE.	YACHT'S NAME.
o-1	1876—January 6.	The Lt.-Governor of N. S.	Government House, Halifax.	
o-2	1876—“	The Admiral Commanding	Admiralty House, Halifax.	
o-3	1876—“	The General Commanding	Maplewood, Halifax.	Mayflower.
o-4	1876—“	The Mayor of Halifax	Halifax.	
o-5	1876—“	The Minister of Marine	Ottawa.	
o-6	1878—March 19	Gifford, Chas., Lieut.-Col.	Coburg, Ontario	
o-7 †	1878—November 6	Dufferrin, Earl of	Clandeboye, Co. Down, I.	
o-8	1878—November 9	Inglesfield, Adm'l Sir E. A.	London.	
o-9 †	1878—December 26	Lorne, Marquis of, <i>Com.</i>	Rideau Hall, Ottawa.	
o-10 †	1879—June 4	Hussey, E. R., Capt. R. E.	Chatham.	
o-11	1879—June 30	Kunhardt, C. F.	40 Park Row, New York	Teal.
o-12	1881—January 21	Vermilye, W. R., <i>Com.</i> A.Y.C.	Englewood, New Jersey.	Atlanta.
o-13	1882—January 19	Tobin, Stephen	Halifax.	

And the Flag-Officers and Secretary of all Royal, Recognized, and Foreign Yacht Clubs, extending the same courtesy to the Flag-Officers and Secretary of the Squadron.

## ORDINARY MEMBERS.

No.	DATE OF ADMISSION.	NAME.	RESIDENCE.	YACHT'S NAME
42	1880—July 10	Allison, A.	Halifax	
39	" " "	Almon, M. B.	"	
31	1879—April 17.	Barker, J. C., Capt. R. E.	"	
16	January 15	Bell, R.	Bay of Quinte V. C., Ontario	Pastime.
9	1877—April 19	Briand, Leon.	Halifax	
	Original Member	Brookfield, W. H.	"	
26	" April 17.	Browne, D. M., Lt. R. N.	"	Nymphæa
8	1879—January 15	Brown, C. E.	Halifax and Chester	Esme.
	Original Member	Butler, J. E.	"	
21†	1876—October 18	Capel Cure, G. E.	Abroad	
15	"—June 5	Carter, C. C., Lt. R. E.	Halifax	
52†	1876—" 21	Chalmers, D. C.	"	
49	1881—April 21	Chauncy, W. A., <i>Vice-Com.</i>	"	Oi-Kaze.
13	" " "	Clarke, Lardner, Lt. R. A.	"	
7	Original Member	Clerke, H. W., Lt.-Col.	"	Albatross.
63	" " "	Cronan, D.	"	
	1881—June 3	Cunard, E. H.	"	
68	1881—October 20	Dawson, Edwin.	Charlottetown, P. E. I.	Wavelet.
5	Original Member	Edwards, A. C.	Halifax	

14 1876—June 21

Fraser, James

Halifax



14	1876—June 21	Fraser, James	Halifax	Petrel.
57	1881—“ 3	Fearon, J. A., Lt. 19th Regt.	“	
72	1882—April 20.	Greer, T., M. D.	“	
	1886—“ 15.	Guildford, Capt.	“	
33	1879—June 26.	Gates, H. E.	Hamilton, Ontario	
69	1882—April 20	Hamilton, P. F., Capt. P. A.	Halifax	Ina
71	“ “	Hamilton, F.	“	
10	Original Member.	Hedley, W.	“	
17	1877—April 19	Henry, H. McD., Q. C.	“	
50	1881—“ 21	Handcock G C S, Lt 19th Regt	“	Petrel.
66	“—June 17	Hadow, A. DeS., Lt. 19th Regt.	“	“
	1879—April 17	Johnstone, H. W.	“	Daphne.
28	“ “	Jones, A. E.	“	
54	1881—“ 21	King, James W.	Launenburg	Lorne.
67	“—June 17	Lawson, A., M. D.	Halifax	
59	“ “ 3	Lord, A.	Charlottetown, P. E. I.	Claribel.
32	1879—April 17	Loke, G. H.	Halifax	
3	Original Member.	MacDonald, Rook.	“	Mayflower.
27	1879—April 17	MacDougall, Genl. Sir P. L.	“	
43	1881—January 21	Mackinlay, Charles	“	
70	1882—April 20	MacMahon, J. J., Lt. R. A.	“	
19	1878—April 28	Macnab, W.	“	
69	1882—	Matheson G H F, Lt 19th Regt	“	Isabel.
45	1877—March 11	McLoughlin, C. H.	“	

ORDINARY MEMBERS. — (Continued.)

No.	DATE OF ADMISSION.	NAME.	RESIDENCE.	YACHT'S NAME.
70	1882—	Merser, W. L., Lt. 19th Regt.	Halifax	Mary.
18	1877—May 25	Mitchell, W. F.	"	
24	1878—July 17	Morrison, Rev. R.	"	
62	1879—April 17	O'Bryan, Capt. E.	"	
	1881—June 3	Oliver, Lt., R. A.	"	
	1878—Oct. 18	Ord, W. St. G., Lt. R. E.	Abroad	Mary.
71	1882—	Orr, M. H., Lt. 19th Regt.	Halifax	
12†	Ordinary Member.	Passow, F. M.	Dartmouth	{ Bertha. Lita. Emma
61	1881—June 3	Palmer, —	Charlottetown, P. E. I.	
53	" —April 21	Pearson, Lt., 19th Regt.	Halifax	
36	1879—July 28	Phelan, F. J.	"	Minnehaha.
44	1881—Jan. 21	Playfair, G. V., Capt. R. A.	"	
40	1880—July 10	Prinsep, D. G., Lt. R. A.	"	
58	1881—June 3	Quirk, R. F.	Charlottetown, P. E. I.	Claribel.
	1879—Jan. 15	Robertson, D. B.	Bay of Quinte V. C., Ont.	
60	1881—June 3	Robins, T. C.	Charlottetown, P. E. I.	Emma.
38	1880—April 15	Ronne, G.	Halifax	
34	1879—June 30	Rudolf, F.	"	Saucy Ella.
48	1881—April 21	Rudolf, J., Jr.	Laurenburg	Circe.

48	1881—April 21	Rudolf, J., Jr.	Lauenburg	Circe.
29	1879—April 17	Scater, W. S.	Halifax	Muta.
41	" " "	Scott, P. A., Capt. R. N.	"	Petrel.
51	1880—July 10	Shaw, T. B., Lt. R. E.	"	Phantom.
47	1881—April 21	Spottiswoode, C. J., Lt. 19th.	"	
47	" " "	Stairs, F.	"	
47	Original Member.	Stairs, J. W.	"	
17	Original Member.	Sumichrast, F. C.	"	
56	1881—June 3	Symons, J. H.	"	
37	1880—April 15	Tatham, Major, R. A.	"	Marie.
11	Original Member.	Troop, W. H.	"	Psyche.
64†	1881—June 17	Trott, Capt. S., <i>Rear-Com.</i>	Dartmouth	
27	Original Member.	Twining, H. St. G.	Halifax	
55	1881—June 3	Tyler, H. E., Lt. R. E.	"	
65	1881—June 17	Vanbuskirk, G. E.	"	Mariquita.
68	1882—April 20	Wallace, W.	"	Lily.
23	1878—July 17	Weeks, W. H., M. D.	Dartmouth	Kestrel.
35†	1879— " 28	West, F. S.	Halifax	
67	Original Member.	White, S. A.	"	
20	1878—June 5	Wickwire, W. N., M. D.	"	
30	1879—April 17	Wrottesley, E., Lt. R. E.	"	
25	1878—August 22	Yorston, J.	Pictou	Slip.
45	1881—April 21	Zwicker, A. H.	Lunenburg	Hebe.

# LIST OF YACHTS.

Squad No.	Name of Yacht	Reg.	Tonnage	Stg. Letters showing other Squad No.	OWNER.	Distinishing Flag.	Port.	Builder.
1	Albatross.	Schr.	8	12	P. B. C. Cronan, Daniel.	White pendant, two vertical [red bars.	Halifax.	1
24 105389	Atalanta.	"	86	109	P. C. M. Vermilye, W. R.	White swallow-tail burgee, [blue V.	New York.	44
2	Bertha. Carita.	Cutter Slp.	3		P. B. F. Passow, F. M.	Red, white, black, horiz.	Halifax.	
18	Circe.	"	2	3	P. B. G. Rudolf, J., jr.	White, blue star.	Lunenburg.	18
83,167	Charibel.	"			P. B. R. Quirk, R. F.		Ch'town, P. E. I.	
6	Daphne.	"	4	4	P. C. T. Jones, A. E.	Red, white, red horizontal, [blue star.	Halifax.	6
83,115	Emma.	"			P. C. H. Robins, T. C.		Ch'town, P. E. I.	
16	Esmé.	"	5	7	P. D. K. Butler, J. E.	Red and white burgee.	Halifax.	16
19	Habe.	"	3	5	P. B. K. Zwicker, A. H.	White burgee, blue ball.	Lunenburg.	19
83,165		"						
12	Ina.	"	3	2	P. B. N. Hamilton, P. F., Capt. R. A.		Halifax.	12
21	Isabel.	"	4	4	P. B. O. Matheson, G. H. F.		"	21
83,117		"						
3	Kestrel.	Ywl.	8	10	P. D. B. White, S. A.	Blue, white, blue, horiz.	"	E. Moseley. 3
83,111		"						
10	Lily.	Slp.	3	3	P. C. O. Weeks, W. H., M. D.	White pennant, blue fleur [de lis.	"	10
13	Lita.	Cat.			P. D. B. Passow, F. M.	Red, white, black, horiz.	"	Williams. 13

23 Lorne. Slp. 3 4 P. B. T. King, James W. White. Lunenburg. 23  
83,106  
26

23	Lorne.	Slp.	3	4	P. B. T.	King, James W.	White.	Lauenburg.	23
83,166	Mariposa.	Ywl.		2	P. C. W.	Wallace, W.		Halifax.	26
7	Marie.	Slp.	2	2	P. C. R.	Troop, W. H.	White and blue vertical.	"	E. Moseley 7.
83,169	Mary.	"			P. D. M.	Orr and Mercer, Ltd.		"	27
11	Mayflower.	"	3		P. C. D.	MacDougall, Gen. Sir P. L.		"	11
83,110	Mimichaha.	"	7	7	P. B. M.	Playfair, Capt. R. A.	Blue, yellow cross.	"	E. Moseley. 17
17	Molly Bawn	"		4	P. C. G.	Shaw, T. B.		"	
83,116	Mura.	"	3	3	P. C. J.	Brown C. E.	Red, white and red.	"	Butler. 20
20	Nymphsea.	Ywl.	6	7	P. B. S.	Chauncy, W. A.	Black, yellow star.	Lauenburg.	E. Moseley. 5
5	Oi-Kaza.	Cutter	9	16	T. J. S. K.	Brookfield, W. H.	Red, white Maltese cross.	Port Medway.	Hurt. * 8
8	Pastime.	Sehr.	14	22	P. B. H.	Spottiswoode, C. J., <i>et al.</i>	Red, blue triangles, white Maltese cross.	"	" * 9
9	Petrel.	Slp.	8	14	P. B. V.	Stairs, F.	Blue and white horizontal.	Halifax.	Hinch. 15
77,784	Phantom.	Slp.	4	4	P. b. W.	Trott, Capt. S.	Red.	"	H. Moseley. 14
15	Psyche.	"	4	4	P. C. F.	Rudolf, F.	Red and white horizontal, blue diamond.	"	Butler. 22
89,859	Saucy Ella (c.b.-slp).	"	7	12	P. D. G.	Yorston, J.	Red, with white Y.	"	McLean. 25
22	Teal.	Slp.		4	P. D. S.	Kunhardt, C. F.		Pictou.	Yorston. 4
25	Wardlet.	"		4	P. C. K.	Dawson, E.		New York.	28

6. \* Designed by Butler.

9. \* Designed by J. D. Lawlor, Chelsea, Mass.

28. \* Designed by Kunhardt.

# YACHTS' SIGNAL LETTERS.

ALPHABETICALLY ARRANGED.

P. B. C. ....	Albatross.	P. C. L. ....	Saucy Ella.
P. B. D. ....	Lita.	P. C. M. ....	Atalanta.
P. D. F. ....	Bertha.	P. C. N. ....	
P. B. G. ....	Circe.	P. C. Q. ....	Lily.
P. B. H. ....	Pastime.	P. C. R. ....	Marie.
P. B. K. ....	Hebe.	P. C. S. ....	
P. B. L. ....		P. C. T. ....	Daphne.
P. B. M. ....	Minnehaha.	P. C. V. ....	
P. B. N. ....	Ina.	P. C. W. ....	Mariquita.
P. B. Q. ....	Isabel.	P. D. B. ....	Kestrel.
P. B. R. ....	Claribel.	P. D. C. ....	Slip.
P. B. S. ....	Nymphœa.	P. D. F. ....	
P. B. T. ....	Lorne.	P. D. G. ....	
P. B. V. ....	Petrel.	P. D. H. ....	
P. B. W. ....	Phantom.	P. D. J. ....	
P. C. B. ....		P. D. K. ....	Esme.
P. C. D. ....	Mayflower.	P. D. L. ....	
P. C. F. ....	Psyche.	P. D. M. ....	Mary.
P. C. G. ....	Molly Bawn.	P. D. N. ....	
P. C. H. ....	Emma.	P. D. Q. ....	
P. C. J. ....	Muta.	P. D. R. ....	
P. C. K. ....	Wavelet	P. D. S. ....	Teal.
T. J. S. K. ....			Oi-Kaze.

SIXTIETHS FOR 1882

RS.

Saucy Ella.  
 Atalanta.  
 . . . . . Lily.  
 . . . . . Marie.  
 . . . . . Daphne.  
 . . . . . Mariquita.  
 . . . . . Kestrel.  
 . . . . . Slip.  
 . . . . .  
 . . . . . Esme.  
 . . . . . Mary.  
 . . . . . Teal.

## FIXTURES FOR 1882.

DATE.	FIXTURES.	PRIZES.	COURSE.	START.	OFFICER OF THE DAY.
June 17.	Opening Cruise.	One	No. 2.	2.30 p. m.	The Vice-Commodore.
June 24.	Race open to Yachts of first class.	One	No. 3.	1.30 p. m.	F. C. Sumichrast, Esq.
" "	Race open to Yachts of second class.	One	No. 4.	2 p. m.	W. H. Troop, Esq.
July 1.	Race open to Yachts of third class.	14-Gov'nor's Challenge Cup, & 3 class prizes.	No. 1.	2 p. m.	A. Allison, Esq.
" 15.	Race open to all Yachts of the Squadron.	The Commodore's Cup and a second prize	No. 1.	2 p. m.	
" 29.	Race open to Yachts of first class.	The Vice-Com's. prize.	No. 2.	1.30 p. m.	W. Hedley, Esq.
" "	Race open to Yachts of second class.	The Rear-Com's. prize.	No. 3.	1.30 p. m.	
" "	Race open to Yachts of third class.	The Secretary's prize.	No. 4.	2 p. m.	
August 14.	Race open to all Yachts of the Squadron.	One	No. 5.	10 a. m.	The Rear-Commodore.
" 16.	Race open to all Yachts of the Squadron.	The Chester Town Cup and a second prize.	No. 6.		
" 18.	Race open to all Yachts of the Squadron.	One	No. 7.	3 a. m.	C. E. Brown, Esq.
Sept. 2.	Race open to all Yachts of the Squadron.	The Mayor's Cup and 3 class Prizes.	No. 1.	2 p. m.	A. C. Edwards, Esq.
" 16.	Race open to Yachts of first class.	One	No. 2.	1.30 p. m.	
" "	Race open to Yachts of second class.	One	No. 3.	1.30 p. m.	
" "	Race open to Yachts of third class.	One	No. 4.	2 p. m.	
Not fixed.	Race open to Yachts' Dinghies (sailing)	The Vice-Com's. prize.			
" "	Race open to all Yachts of the Squadron.	One			The Rear-Commodore.
					AT CHARLOTTETOWN, P. E. I.

NOTE.—In Races of July 1, July 15 and September 2, the winner of the Cup will be debared from taking the Class Prize.

NOTE.—The name of Officer of the Day and the time of start for race of August 16, at Chester, will be announced in notice of race.

## CLASSES.

During the Season of 1882, Yachts will be divided into Classes as follows:—

FIRST CLASS—	Yachts of 7 tons, and exceeding 7 tons, R. N. S. Y. S. measurement.
SECOND “	“ —Yachts of less than 7 and exceeding 3 tons, “
THIRD “	“ —Yachts of 3 tons and under, “

## COURSES.

- No. 1.—Starting from H. M. Lumber Yard, to Dartmouth Ferry Buoy; thence to flag-boat off Fort Clarence; thence to Mar's Rock Buoy; leaving all marks on starboard hand, and finish off H. M. Lumber Yard. 11 miles, 3 cables.
- No. 2.—Starting from H. M. Lumber Yard, to Litchfield Buoy; thence to Inner Automatic Buoy (Red); thence to Rock-head Shoal Buoy; leaving these marks on port hand; thence to Litchfield Buoy, leaving it on starboard hand, and finish off H. M. Lumber Yard. 16 miles, 5 cables.
- No. 3.—Starting from H. M. Lumber Yard, to Mars' Rock Buoy; thence to flag-boat off Fort Clarence; thence to Dartmouth Ferry Buoy, leaving all marks on port hand, and finish off H. M. Lumber Yard. 11 miles, 3 cables.
- No. 4.—Starting from H. M. Lumber Yard, to Dartmouth Ferry Buoy; thence to flag-boat off Fort Clarence; thence to Point Pleasant Buoy, leaving all marks on starboard hand, and finish off H. M. Lumber Yard. 5 miles, 1 cable.
- No. 5.—Starting from H. M. Lumber Yard, to Robinson's Wharf, Chester. 45 miles.
- No. 6.—Starting from Robinson's Wharf, Chester, to flag-boat off Deep Cove; thence round Little Tancook Island, leaving boat and Island on starboard hand; thence round western point of Quaker's Island, and finish off Robinson's Wharf. 16 miles.
- No. 7.—Starting from Robinson's Wharf, Chester, to H. M. Lumber Yard, Halifax. 45 miles.



No. 7.—Starting from Robinson's Wharf, Chester, to H. M. Lumber Yard, Halifax. 45 miles.  
Wharf. 10 miles.

