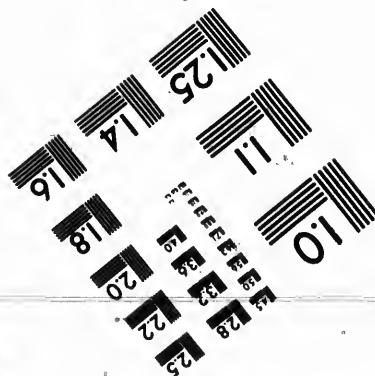
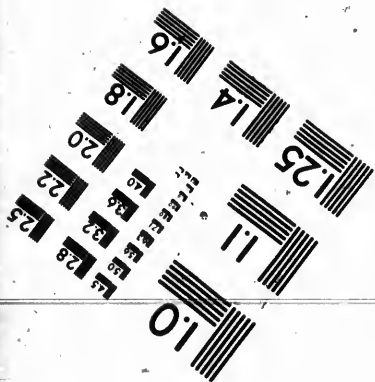
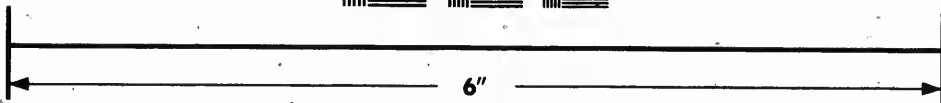
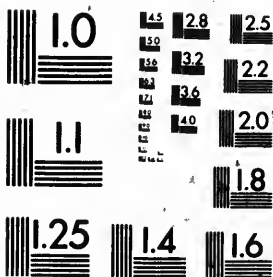


**IMAGE EVALUATION
TEST TARGET (MT-3)**



**Photographic
Sciences
Corporation**

23 WEST MAIN STREET
WEBSTER, N.Y. 14580
(716) 872-4503

**CIHM
Microfiche
Series
(Monographs)**

**ICMH
Collection de
microfiches
(monographies)**



Canadian Institute for Historical Microreproductions / Institut canadien de microreproductions historiques

© 1992

The Institute has attempted to obtain the best original copy available for filming. Features of this copy which may be bibliographically unique, which may alter any of the images in the reproduction, or which may significantly change the usual method of filming, are checked below.

- Coloured covers/
Couverture de couleur
- Covers damaged/
Couverture endommagée
- Covers restored and/or laminated/
Couverture restaurée et/ou pelliculée
- Cover title missing/
Le titre de couverture manque
- Coloured maps/
Cartes géographiques en couleur
- Coloured ink (i.e. other than blue or black)/
Encre de couleur (i.e. autre que bleue ou noire)
- Coloured plates and/or illustrations/
Planches et/ou illustrations en couleur
- Bound with other material/
Relié avec d'autres documents
- Tight binding may cause shadows or distortion
along interior margin/
La reliure serrée peut causer de l'ombre ou de la
distorsion le long de la marge intérieure
- Blank leaves added during restoration may appear
within the text. Whenever possible, these have
been omitted from filming/
Il se peut que certaines pages blanches ajoutées
lors d'une restauration apparaissent dans le texte,
mais, lorsque cela était possible, ces pages n'ont
pas été filmées.
- Additional comments: /
Commentaires supplémentaires:

This item is filmed at the reduction ratio checked below/
Ce document est filmé au taux de réduction indiqué ci-dessous.

10X		14X		18X		22X	
12X		16X		20X			

nd Bibliographic Notes / Notes techniques et bibliographiques

best original
copy which
alter any
may
ming, are

L'Institut a microfilmé le meilleur exemplaire qu'il lui a été possible de se procurer. Les détails de cet exemplaire qui sont peut-être uniques du point de vue bibliographique, qui peuvent modifier une image reproduite, ou qui peuvent exiger une modification dans la méthode normale de filmage sont indiqués ci-dessous.

- Coloured pages/
Pages de couleur
 - Pages damaged/
Pages endommagées
 - #19 Pages restored and/or laminated/
Pages restaurées et/ou pelliculées
 - Pages discoloured, stained or foxed/
Pages décolorées, tachetées ou piquées
 - Pages detached/
Pages détachées
 - Showthrough/
Transparence
 - Quality of print varies/
Qualité inégale de l'impression
 - Continuous pagination/
Pagination continue
 - Includes index(es)/
Comprend un (des) index
- Title on header taken from: /
Le titre de l'en-tête provient:
- Title page of issue/
Page de titre de la livraison
 - Caption of issue/
Titre de départ de la livraison
 - Masthead/
Générique (périodiques) de la livraison

checked below/
on indiqué ci-dessous.

18X			22X			26X			30X		
20X			24X			28X			32X		

The copy filmed here has been reproduced thanks to the generosity of:

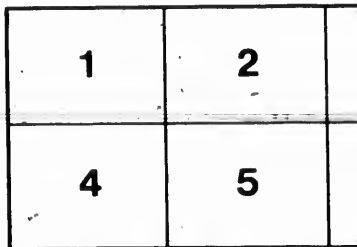
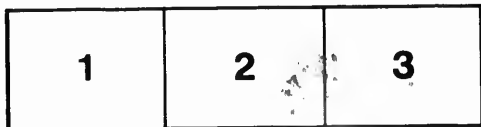
National Library of Canada

The images appearing here are the best quality possible considering the condition and legibility of the original copy and in keeping with the filming contract specifications.

Original copies in printed paper covers are filmed beginning with the front cover and ending on the last page with a printed or illustrated impression, or the back cover when appropriate. All other original copies are filmed beginning on the first page with a printed or illustrated impression, and ending on the last page with a printed or illustrated impression.

The last recorded frame on each microfiche shall contain the symbol \rightarrow (meaning "CONTINUED"), or the symbol ∇ (meaning "END"), whichever applies.

Maps, plates, charts, etc., may be filmed at different reduction ratios. Those too large to be entirely included in one exposure are filmed beginning in the upper left hand corner, left to right and top to bottom, as many frames as required. The following diagrams illustrate the method:



L'exer
géné

Les im
plus g
de la
confo
filma

Les ex
papier
par le
derni
d'imp
plat, s
origin
premi
d'imp
la der
empr

Un de
derni
cas: l
symp

Les c
filmé
Lorsq
repro
de l'a
et de
d'ima
illust

ed thanks

L'exemplaire filmé fut reproduit grâce à la
générosité de:

la

Bibliothèque nationale du Canada

quality
ingibility
the

Les images suivantes ont été reproduites avec le
plus grand soin, compte tenu de la condition et
de la netteté de l'exemplaire filmé, et en
conformité avec les conditions du contrat de
filmage.

re filmed
ng on
l impres-
e. All
g on the
pres-
printed

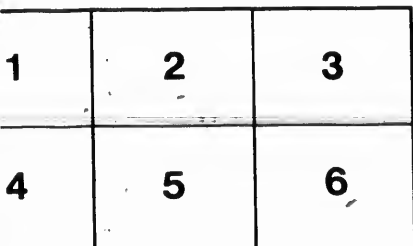
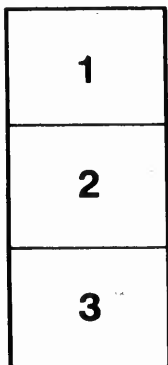
Les exemplaires originaux dont la couverture en
papier est imprimée sont filmés en commençant
par le premier plat et en terminant soit par la
dernière page qui comporte une empreinte
d'impression ou d'illustration, soit par le second
plat, selon le cas. Tous les autres exemplaires
originaux sont filmés en commençant par la
première page qui comporte une empreinte
d'impression ou d'illustration et en terminant par
la dernière page qui comporte une telle
empreinte.

che
"CON-
END"),

Un des symboles suivants apparaîtra sur la
dernière image de chaque microfiche, selon le
cas: le symbole → signifie "A SUIVRE", le
symbole ▽ signifie "FIN".

d at
ge to be
ned
left to
s as
ate the

Les cartes, planches, tableaux, etc., peuvent être
filmés à des taux de réduction différents.
Lorsque le document est trop grand pour être
reproduit en un seul cliché, il est filmé à partir
de l'angle supérieur gauche, de gauche à droite,
et de haut en bas, en prenant le nombre
d'images nécessaire. Les diagrammes suivants
illustrent la méthode.



French Protestant Church, JOLIETTE.

The Town of Joliette was occupied by the French Canadian Missionary Society as one of its stations, about thirty years ago. The attempt was met by violent opposition, but the Divine Seed has brought forth fruit. An Evangelical Church has been organized, and regular religious worship is conducted.

Joliette is the centre of a large agricultural district, with a Weekly Market, Mills, Railway, and a growing population. It contains a large College, Nunnery, Seminary, and other Roman Catholic Institutions. The maintenance and efficient working of the French Protestant Church is, therefore, of great importance. For this end, a suitable building is required.

A few years since, a favorable site was purchased and paid for by the members of the Church, and a building commenced, to serve as a place of worship, school-room and residence for the Missionary.

The necessary funds, however, were not forthcoming, and the work on it has been suspended during two years. This delay is not only injurious to the efficiency of the Mission, but a source of pain to the friends, and of triumph to the enemies of the Gospel.

It is, therefore, of great consequence that these Mission premises should be at once completed. This will require about six hundred dollars, to furnish all of which the members of the Church, few in number, are quite unable. They have already given \$300, and are prepared to make a new effort.

Compelled thus to appeal to the friends of the cause outside, contributions are respectfully solicited, and will be gratefully received by the undersigned on behalf of the Church.

J. VESSOT, *Ministère.*

S. CLEMENTS, *Treasurer.*

JOLIETTE, OCTOBER 15TH, 1874.

BV2815

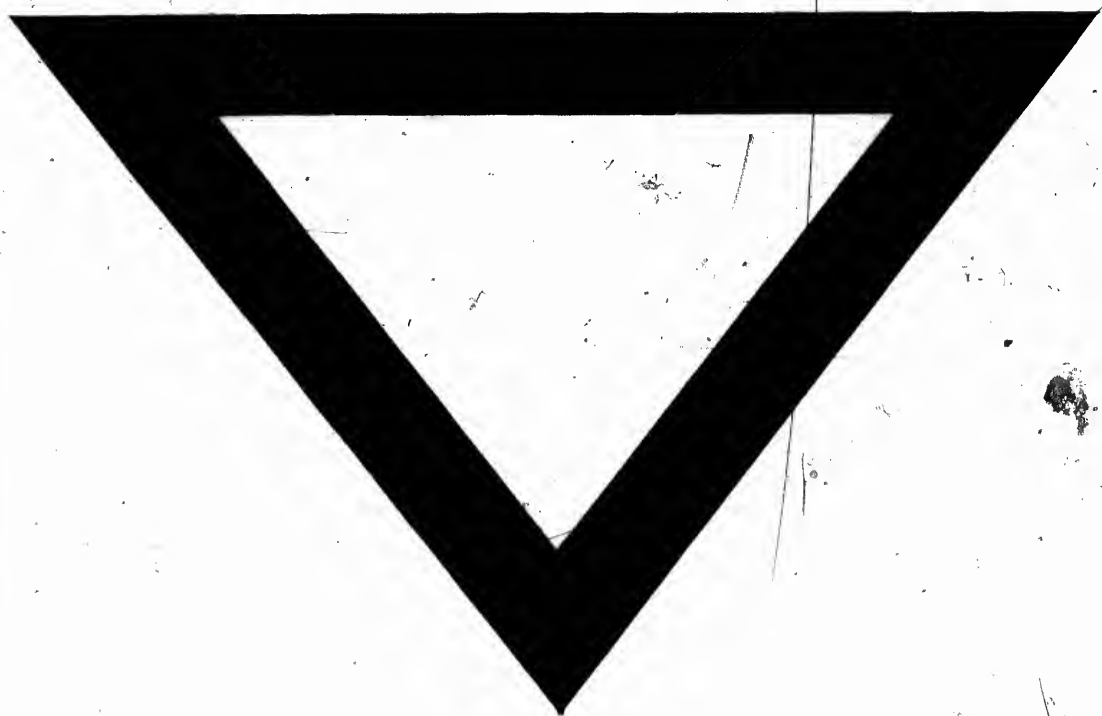
Q3

F74

1874

We earnestly recommend the object of this appeal as fully
deserving of a liberal response.

WM. TAYLOR, D.D.
JAMES COURT,
R. F. BURNS, D.D.
J. T. PITCHER,
D. COUSSIRAT,
CHARLES CHAPMAN, M.A.
D. H. MacVICAR, LL. D.



Handwritten mark or signature at the bottom left corner.