



**CIHM  
Microfiche  
Series  
(Monographs)**

**ICMH  
Collection de  
microfiches  
(monographies)**



**Canadian Institute for Historical Microreproductions / Institut canadien de microreproductions historiques**

**© 1994**

Technical and Bibliographic Notes / Notes techniques et bibliographiques

The Institute has attempted to obtain the best original copy available for filming. Features of this copy which may be bibliographically unique, which may alter any of the images in the reproduction, or which may significantly change the usual method of filming, are checked below.

L'Institut a microfilmé le meilleur exemplaire qu'il lui a été possible de se procurer. Les détails de cet exemplaire qui sont peut-être uniques du point de vue bibliographique, qui peuvent modifier une image reproduite, ou qui peuvent exiger une modification dans la méthode normale de filmage sont indiqués ci-dessous.

- Coloured covers/  
Couverture de couleur
- Covers damaged/  
Couverture endommagée
- Covers restored and/or laminated/  
Couverture restaurée et/ou pelliculée
- Cover title missing/  
Le titre de couverture manque
- Coloured maps/  
Cartes géographiques en couleur
- Coloured ink (i.e. other than blue or black)/  
Encre de couleur (i.e. autre que bleue ou noire)
- Coloured plates and/or illustrations/  
Planches et/ou illustrations en couleur
- Bound with other material/  
Relié avec d'autres documents
- Tight binding may cause shadows or distortion  
along interior margin/  
La reliure serrée peut causer de l'ombre ou de la  
distorsion le long de la marge intérieure
- Blank leaves added during restoration may appear  
within the text. Whenever possible, these have  
been omitted from filming/  
Il se peut que certaines pages blanches ajoutées  
lors d'une restauration apparaissent dans le texte,  
mais, lorsque cela était possible, ces pages n'ont  
pas été filmées.

- Coloured pages/  
Pages de couleur
- Pages damaged/  
Pages endommagées
- Pages restored and/or laminated/  
Pages restaurées et/ou pelliculées
- Pages discoloured, stained or foxed/  
Pages décolorées, tachetées ou piquées
- Pages detached/  
Pages détachées
- Showthrough/  
Transparence
- Quality of print varies/  
Qualité inégale de l'impression
- Continuous pagination/  
Pagination continue
- Includes index(es)/  
Comprend un (des) index

Title on header taken from: /  
Le titre de l'en-tête provient:

- Title page of issue/  
Page de titre de la livraison
- Caption of issue/  
Titre de départ de la livraison
- Masthead/  
Générique (périodiques) de la livraison

- Additional comments: /  
Commentaires supplémentaires:

This item is filmed at the reduction ratio checked below /  
Ce document est filmé au taux de réduction indiqué ci-dessous.

10X	14X	18X	22X	26X	30X
<input type="checkbox"/>	<input type="checkbox"/>	<input checked="" type="checkbox"/>	<input type="checkbox"/>	<input type="checkbox"/>	<input type="checkbox"/>
12X	16X	20X	24X	28X	32X

The copy filmed here has been reproduced thanks to the generosity of:

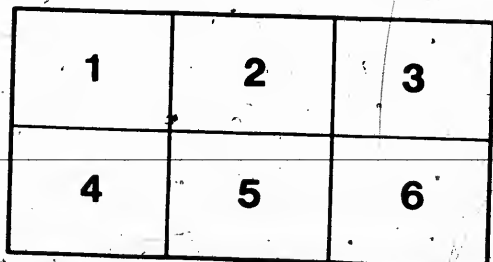
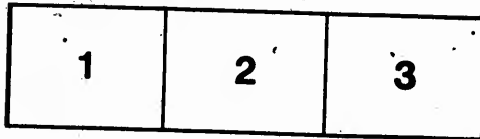
Thomas Fisher Rare Book Library,  
University of Toronto Library

The images appearing here are the best quality possible considering the condition and legibility of the original copy and in keeping with the filming contract specifications.

Original copies in printed paper covers are filmed beginning with the front cover and ending on the last page with a printed or illustrated impression, or the back cover when appropriate. All other original copies are filmed beginning on the first page with a printed or illustrated impression, and ending on the last page with a printed or illustrated impression.

The last recorded frame on each microfiche shall contain the symbol  $\rightarrow$  (meaning "CONTINUED"), or the symbol  $\nabla$  (meaning "END"), whichever applies:

Maps, plates, charts, etc., may be filmed at different reduction ratios. Those too large to be entirely included in one exposure are filmed beginning in the upper left hand corner, left to right and top to bottom, as many frames as required. The following diagrams illustrate the method:



L'exemplaire filmé fut reproduit grâce à la générosité de:

Thomas Fisher Rare Book Library,  
University of Toronto Library

Les images suivantes ont été reproduites de la meilleure qualité possible compte tenu de l'état de la netteté de l'exemplaire original et en conformité avec les conditions du contrat de filmage.

Les exemplaires originaux en papier imprimé sont filmés à partir du premier plat et en terminant sur la dernière page qui comporte une impression ou une illustration, selon le cas. Tous les autres exemplaires originaux sont filmés en commençant par le premier plat qui comporte une impression ou une illustration et en terminant sur la dernière page qui comporte une impression ou une illustration.

Un des symboles suivants sera inscrit sur la dernière image de chaque microfiche: le symbole  $\rightarrow$  signifie "CONTINUED" et le symbole  $\nabla$  signifie "FIN".

Les cartes, planches, tableaux, etc., peuvent être filmés à des taux de réduction différents. Lorsque le document est trop grand pour être reproduit en un seul cliché, il est filmé en commençant par l'angle supérieur gauche et en continuant de haut en bas, en prenant le nombre d'images nécessaire. Les diagrammes suivants illustrent la méthode.



L'exemplaire filmé fut reproduit grâce à la générosité de:

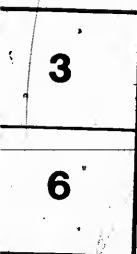
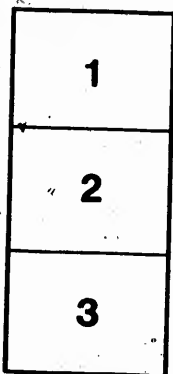
Thomas Fisher Rare Book Library,  
University of Toronto Library

Les images suivantes ont été reproduites avec le plus grand soin, compte tenu de la condition et de la netteté de l'exemplaire filmé, et en conformité avec les conditions du contrat de filmage.

Les exemplaires originaux dont la couverture en papier est imprimée sont filmés en commençant par le premier plat et en terminant soit par la dernière page qui comporte une empreinte d'impression ou d'illustration, soit par le second plat, selon le cas. Tous les autres exemplaires originaux sont filmés en commençant par la première page qui comporte une empreinte d'impression ou d'illustration et en terminant par la dernière page qui comporte une telle empreinte.

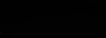
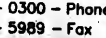
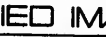
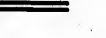
Un des symboles suivants apparaîtra sur la dernière image de chaque microfiche, selon le cas: le symbole  $\rightarrow$  signifie "A SUIVRE", le symbole  $\nabla$  signifie "FIN".

Les cartes, planches, tableaux, etc., peuvent être filmés à des taux de réduction différents. Lorsque le document est trop grand pour être produit en un seul cliché, il est filmé à partir de l'angle supérieur gauche, de gauche à droite, de haut en bas, en prenant le nombre d'images nécessaire. Les diagrammes suivants illustrent la méthode.



# MICROCOPY RESOLUTION TEST CHART

(ANSI and ISO TEST CHART No. 2)



**APPLIED IMAGE Inc**

1653 East Main Street  
Rochester, New York 14609 USA  
(716) 482 - 0300 - Phone  
(716) 288 - 5989 - Fax

1883

PRICE LIST.

HAROLD SMITH

MANUFACTURING CO.

BEER BREWERY

STOVES

SAMPLE ROOMS  
91 FRONT ST. EAST.  
TORONTO  
ONT.

MAIL PRINTING CO., TORONTO.

1948  
1949  
1950  
1951  
1952  
1953  
1954  
1955  
1956  
1957  
1958  
1959  
1960  
1961  
1962  
1963  
1964  
1965  
1966  
1967  
1968  
1969  
1970  
1971  
1972  
1973  
1974  
1975  
1976  
1977  
1978  
1979  
1980  
1981  
1982  
1983  
1984  
1985  
1986  
1987  
1988  
1989  
1990  
1991  
1992  
1993  
1994  
1995  
1996  
1997  
1998  
1999  
2000  
2001  
2002  
2003  
2004  
2005  
2006  
2007  
2008  
2009  
2010  
2011  
2012  
2013  
2014  
2015  
2016  
2017  
2018  
2019  
2020  
2021  
2022  
2023  
2024  
2025

4408  
-bie

880  
11/1/21

BELLEVILLE

AND TORONTO



# PRICE LIST

## The Harte & Smith Manf. Co.

(LIMITED)

### BELLEVILLE AND TORONTO



MANUFACTURERS OF

*Ranges, Stoves, Furnaces,  
Parlor Coal Grates,  
Hollow-ware, etc.*



Foundry and Office, Belleville

Warehouse and Sample Rooms, 91 Front St. East,  
Toronto.

MAY 1st, 1883.

4572

RANGES



FURNACES

...to ...  
...burning  
...ended

HARTE & SMITH

MANUF'G CO'Y

PRINTED BY  
THE MAIL PRINTING COMPANY  
TORONTO

STOVES

GRATES

1889

BELLEVILLE



AND TORONTO

## Terms

**FOUR MONTHS** from end of current month.

Monthly accounts to be settled by note if required, and overdue accounts to be subject to sight draft.

If paid within thirty days from end of current month, 6% to be allowed; within sixty days, 4½%; within ninety days, 2%.

Goods shipped in July and August may be treated as if shipped in September.

Freight allowed on stoves and hollow ware.

Shipments are at owner's risk.

3

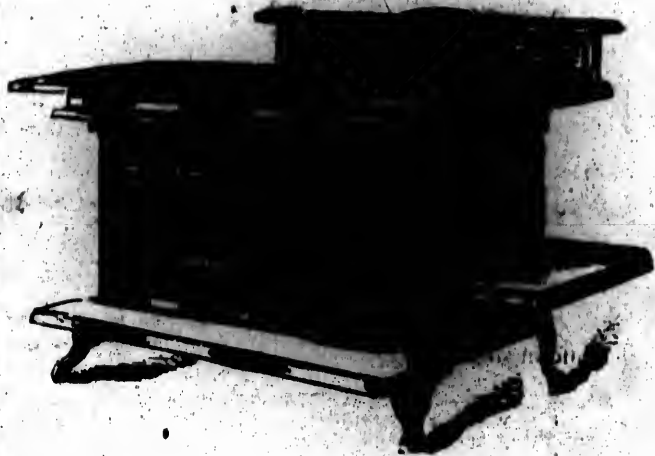
RANGES



FURNACES

HARTE & SMITH

MANUF'G CO'Y



*Dufferin Range*

STOVES

GRATES



# Dufferin Range

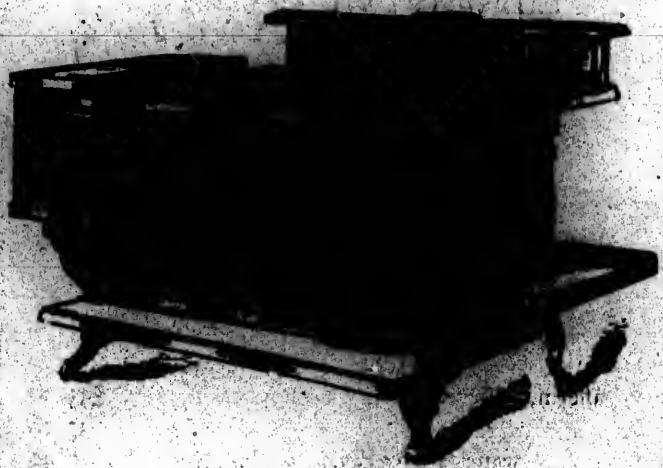
FOR HARD OR SOFT COAL, COKE OR WOOD

With dock ash grate, full nickel-plated, ground edges, back drop and fixed oven shelves.

NO.		
8	Dufferin single oven	\$27 00
9	" "	31 00
8	" water-front-tapped	2 40
9	" " "	2 88

HARTE & SMITH

MANUF'G CO'Y



*Dufferin Range*

STOVES

GRATES

# Dufferin Range

FOR HARD OR SOFT COAL, COKE OR WOOD

With dock ash grate, full nickel-plated, ground edges,  
ack drop and fixed oven shelves.

NO.			
8	Dufferin, with reservoir	.....	\$33 00
9	" "	.....	37 00
8	" water-front tapped	.....	2 40
"	" " "	.....	2 88

HARTE & SMITH

MANUFG COY



*Duffier Range*

STOVES

GRATES



# Duffin Range

FOR BURNING OF BEST COAL, COOK OR WOOD

With steel and brass, hot water pipes, enamel sides, and fire doors.

8	with warming sheet	\$23 00
9	"	27 00
8	" with door tapped	24 00
9	" " "	28 00

HARTE & SMITH

MANUF'G CO'Y



*Duffin Range*

10

STOVES

GRATES

# Dufferin Range

FOR HARD OR SOFT COAL, COKE OR WOOD

With dock ash grate, full nickel-plated, ground edges,  
back door, and oven shelves.

no.		
8	Dufferin, with warming closet and reservoir	\$39 00
9	" " " " " "	43 00
8	" water-front tapped	2 40
9	" " " " " "	2 88

HARTE & SMITH

MANUF'G CO'Y



*Signet Range*

12

STOVES

GRATES



# Signet Range

FOR WOOD OR COAL

With nickel-plated medallions, knobs and hinge pins, drop and fixed outer covers, etc., and all the latest improvements.

NO.		
8	Signet, single oven	\$18 00
8	" " with warming closet	23 00
	Extra for fringed base	0 48

HARTE & SMITH

MANUF'G CO'Y



*Signet Range*

16

STOVES

GRATES

# Signet Range

FOR WOOD OR COAL

With nickel-plated finish, brass hinge pins, drop, and fixed outside oven, contains all the latest improvements.

NO.		
8	Signet with reservoir . . . . .	\$22 00
9	" with warming closet and reservoir . . . . .	28 00
	Extra for fringed base . . . . .	0 48

HARTE & SMITH

MANUF'G CO'Y



*Mechanic*

STOVES

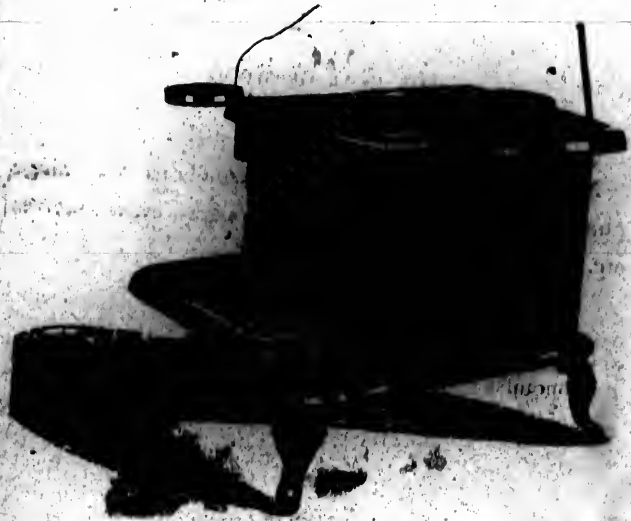
GRATES





HARTE & SMITH

MANUF'G CO'Y



*Economist*

18

STOVES

GRATES

# Economist

FOR COAL OR WOOD

New pattern. Nickel-plated medallions and hinge pins, tin-lined oven doors, ground edges, extra shelves, etc.

NO.		
7	Economist . . . . .	\$15 60
8	" . . . . .	18 90
9	" . . . . .	21 90

### EXTRAS

Nickel-plated towel rack . . . . .	0 30
" tea-pot shelf . . . . .	0 24

HARTE & SMITH

MANUF'G COY

Patented 1882



Iron Crown

20

STOVES

GRATES



# Iron Crown

## FOR WOOD

With nickel-plated hinges, hinge pins, and hinge covers, ground glass, oven doors, etc.

NO.		
9	Iron Crown, 4 holes.	\$27 30
10	"	27 30
9	" 5 holes.	27 30

## EXTRAS

Nickel-plated towel rack	0 30
" tea-pot shelf	0 24

HARTE & SMITH

MANUF'G CO'Y



Iron Crown

STOVES

GRATES

# Iron Crown

FOR WOOD

With *hinge pins, and hinge covers, covered oven doors, etc.*

- NO. 9 Iron Crown, 4 holes, hot closet, and *copper tank* . . . . . \$38 28
- 10 Iron Crown, 4 holes, hot closet, and *copper tank* . . . . . 38 40

### EXTRAS

- Nickel-plated towel rack . . . . . 0 30
- " tea-pot shelf . . . . . 0 24

HARTE & SMITH

MANUF'G COY



STOVES

GRATES





# Goldfinder

## FOR WOOD

Ground edges, tin-lined oven doors, and nickel-plated knobs, hinge pins, medallions, etc.

NO.			
8	Goldfinder		\$19 00
8-9	"		20 00
9	"		23 20
8	"	with hot closet and tank	29 40
8-9	"	" " "	30 40
"	"	" " "	32 60

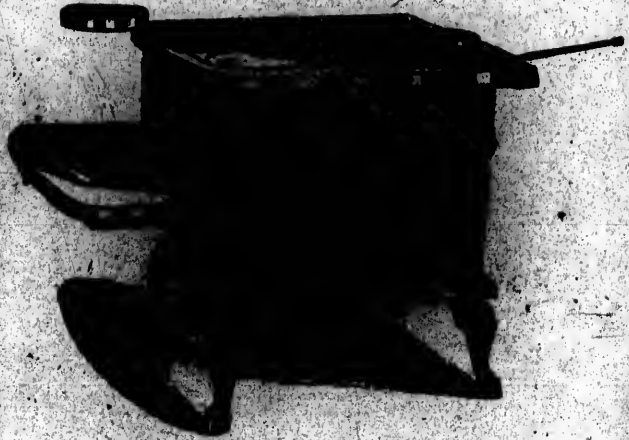
## EXTRAS

Nickel-plated towel rack	o 30
" tea-pot shelf	o 24



HARTE & SMITH

MANUF'G CO'Y



*Iron Cross*

STOVES

GRATES

2600  
11

# Iron Cross

FOR WOOD

With ground edges, nickel-plated panels and hinge pins, tin-lined oven doors, fixed oven shelf and flush hearth.

NO.			
8	Iron Cross . . . . .		\$15 00
9	" . . . . .		18 00
8	" with hot closet . . . . .		18 80
9	" " and iron-clad tank . . . . .		27 60

### EXTRAS

Nickel-plated towel rack . . . . .	0 30
" tea-pot shelf . . . . .	0 24
Planished copper tank for No. 8 Iron Cross . . . . .	6 00

HARTE & SMITH

MANUF'G CO'Y



*Victoria*

28

STOVES

GRATES





# Queen City

FOR WOOD

Well mounted and finished.

NO.		
8	Queen City	\$11 20
9	"	13 60

# Metropolitan

FOR WOOD

Well mounted and finished. A large, heavy stove.

NO.		
8	Metropolitan	\$16 80
9	"	20 60
10	"	21 80

CO'Y

BELLEVILLE

AND TORONTO



*Farmer's Friend*

ELEVATED OVEN, FOR WOOD

Latest style. Ground edges, nickel pins, patent fire bottom, with shelf under oven not shown in cut.

NO			
9	Farmer's Friend, direct	.....	\$24 00
9	" " cut off	.....	24 60

RANGES

FURNACES

11 20  
13 60

ve.

16 80  
20 60  
21 80

3

7

HARTE & SMITH

MANUF'G CO'Y



*Forester*

32

STOVES

GRATES

# Forester

ELEVATED OVEN, FOR WOOD.

Patent ventilating oven. The largest and heaviest stove in the market.

NO.					
9	Forester,	5	cover holes,	direct	\$25 20
9	"	5	"	cut-off	25 20
10	"	4	"	direct	24 00
10	"	4	"	cut-off	24 00



HARTE & SMITH

MANUF'G CO'Y



Rob Roy

34

STOVES

GRATES



# Rob Roy

ELEVATED OVEN, FOR WOOD

A first class cheap stove.

NO.		
8	Rob Roy . . . . .	\$15 40
9	" . . . . .	18 60

HARTE & SMITH

MANUF'G CO'Y



*Crown Jewel*

36

STOVES

GRATES

# Crown Jewel

BASE BURNER, SELF FEEDER

Full nickel-plated, latest style.

NO.			
41	Crown Jewel		\$21 00
42	"		24 60
43	"		25 60
44	"		28 80
45	"		29 60
46	"		32 00
47	"		32 80
48	"		35 00
49	"		36 00
42	"	with oven	29 00
43	"	"	30 00
44	"	"	33 60
45	"	"	34 40
46	"	double heater	36 00
47	"	"	37 00

HARTE & SMITH

MANUF'G CO'Y



*Derby*

STOVES

GRATES

CO'Y

BELLEVILLE

AND TORONTO

# Derby

BASE BURNING SELF FEEDER.

With nickel-plated medallions, hinge pins, urn, etc.,  
ground edges and plated foot-rail included.

NO.

13 Derby.

\$13 50

14 "

16 20

RANGES

FURNACES



HARTE & SMITH

MANUF'G CO'Y



*Dorby*

40

STOVES

GRATES

# Derby

BASE BURNING SELF FEEDER, WITH OVEN

Nickel-plated medallions, hinge pins, urn, etc., ground edges, and plated foot-tail included.

NO.		
13	Derby, with oven . . . . .	\$16 20
14	" " . . . . .	19 20

HARTE & SMITH

MANUF'G CO'Y



*Banner*

STOVES

GRATES

# Banner

## BASE BURNING, SELF FEEDERS

Nickel-plated medallions, hinge-pins, etc. Ground edges, etc., etc.

NO.		
5	Banner	\$16 00
15	"	19 20
15	" oven	24 40





G CO'Y

BELLEVILLE

AND TORONTO

# Nickel-plated Foot Rails

NO.		
41	Crown Jewel	\$1 50
42	"	1 68
43	"	1 74
44	"	1 86
45	"	1 58
46	"	2 10
47	"	2 28
48	"	2 40
49	"	2 76
5	Banner	1 50
15	"	2 20
21	Premier	1 50
23	"	1 68
	Nickel-plated bases for Crown Jewels	1 20

14 00  
17 00  
19 00

0 00  
4 00  
7 00

RANGES

FURNACES

HARTE & SMITH

MANUF'G CO'Y



*Tropic*

43

STOVES

GRATES

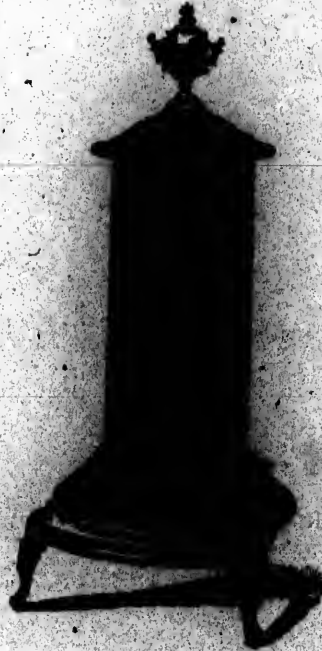
# Tropic

GLOBE STOVE—FOR COAL, PLAIN

NO.					
10	Tropic	.	.	.	\$ 5 56
12	"	.	.	.	7 56
14	"	.	.	.	10 08
10	"	with extra top castings	.	.	5 88
12	"	" "	.	.	8 08
14	"	" "	.	.	10 92
10	"	" Russia iron top	.	.	7 80
12	"	" " "	.	.	10 08
14	"	" " "	.	.	12 24

HARTE & SMITH

MANUFACTURING CO. Y



*Electric*

STOVES

GRATES

# Electric

## CYLINDER FIOVE--FOR COAL, PLAIN

NO.			
10	Electric, castings and brick		\$ 4 40
12	" "		5 60
14	" "		8 80
10	" Russia iron mountings		8 52
12	" "		10 56
14	" "		13 96



HARTE & SMITH

MANUF'G CO'Y



Bright Light

STOVES

GRATES

COY

BELLEVILLE

AND TORONTO

# Bright Light

NEW FRANKLIN FOR BURNING ON SOFT COAL

Ground edges, enamel plated racks, hinges pins, medallions, etc. Patent hot air flues, etc.

NO.		
15	Bright Light	\$12 60
18	"	14 70

MADE

FURNACES

HARTE & SMITH

MANUFACTURING COY



*Premier Base Burner*

STOVES

GRATES

BELLEVILLE

AND TORONTO

# Premier Base Burner

UPRIGHT STOVE, FOR WOOD

Plated, urn, medals, etc. same plates and hinge pins.  
Patent base flue, etc.

NO.

21 Premier

\$15 30

23

17 40

RANGES

FURNACES



HARTE & SMITH

MANUF'G CO'Y



*Crown Diamond*

STOVES

GRATES



# Crown Diamond

## PARLOR RANGE—BOX WOOD

Ground edges, nickel-plated brass knobs and foot-rail—  
highest class of finish

NO.			
22	Crown Diamond,	parlor	\$10 24
25	"	"	12 40
22	"	cook	12 60
25	"	"	14 68

HARTE & SMITH

MANUF'G CO'Y



*Jewel*

STOVES

GRATES

# Jewel

PARLOR STOVE, FOR WOOD

Plain mountings

NO.					
22	Jewel, parlor, castings for Russia top				\$5 68
24	"	"	"	"	6 72
22	"	with Russia top mounted			7 12
24	"	"	"	"	8 40
22	"	cook			8 40
24	"	"	"		10 08

HARTE & SMITH

MANUF'G CO'Y



*Empire Franklin*

STOVES

GRATES

NO  
2  
3

BELLEVILLE

AND TORONTO

# Empire Franklin

PARLOR STOVE—FOR COAL.

NO.

2	Empire Franklin	\$6 68
3	"	8 44

RANGES

FURNACES



HARTE & SMITH

MANUF'G CO'Y



Brandon

STOVES

GRATES

an  
NO  
22  
25  
28  
30

Y

BELLEVILLE

AND TORONTO

# Brandon

## BOX STOVE

Newest style. Ground edges, etc., with two covers and centre piece for wash boiler.

NO.		
22	Brandon . . . . .	\$4 32
25	" . . . . .	5 52
28	" . . . . .	6 72
36	" . . . . .	10 20

RANGES

FURNACES

HARTE & SMITH

MANUF'G COY



*Medallion*

STOVES

GRATES

NO  
1  
2  
2  
3  
3  
3

BELLEVILLE

AND TORONTO

# Medallion

BOX STOVE

Plain finish.

NO.			
18	Medallion		\$3 92
21	"		5 04
28	"		7 76
36	"		11 76
28	"	hinged top	8 28
36	"	"	12 36

RANGES

FURNACES

HARTE & SMITH

MANUF'G CO'Y



*Farmer's Boilers*

STOVES

GRATES



# Farmer's Boilers

R.R.C.		
1	No cover	\$16 50
1 1/2	"	21 40
1	With cover	19 12
1 1/2	"	24 56
1	Cauldron	5 56
1 1/2	"	7 36

We do not keep any of the following stoves in stock,  
but can make them to order.

NO.		
21	Saratoga . . . . .	\$12 00
7	Firefly, for wood . . . . .	5 04
8	" " . . . . .	6 28
7	" for coal . . . . .	6 20
8	" " . . . . .	8 56
22	Lady Lorne, for coal . . . . .	8 68
25	" " . . . . .	10 96
22	" for wood . . . . .	7 56
25	" " . . . . .	9 38
8	Jewel Range, single oven . . . . .	20 10
9	Contentment . . . . .	22 60
8	" . . . . .	15 60

## Miscellaneous

---

Castings for Sunday School seats, fitted and japanned, per set . . . . .	\$1 75
Castings for writing desks, with seats . . . . .	1 75
Bolster plates, 3 x 11, per pair . . . . .	0 36
" 3 1/2 x 14, " . . . . .	0 75
Tuyere Irons, two sizes, per lb. . . . .	0 04

Castings of all kinds made to order.

*Bellows-ware*

7	Straight, per set	\$1 10
8	Bellied, "	1 44
9	" "	1 68
10	" "	1 86
8	Cast Tea-kettles, each	0 72
9	" "	0 84
10	" "	0 96
7	Spider, per doz.	2 75
8	" "	3 00
9	" "	3 60
10	" "	4 32
8	Long Pans, per doz.	5 34
9	" "	6 62
2	Scotch Bowls, each	0 36
3	" "	0 42
4	" "	0 48
5	" "	0 54
6	" "	0 63

BELLEVILLE

AND TORONTO

~~TRADE~~  
New York Boynton Furnace

We have secured the patterns of the above well-known  
furnace, and will furnish prices on application.

RANGES

FURNACES



## Small Wares

No. 8 Pearl Sad Iron Heaters, each . . . . .	\$0 96
" 9 " " " " . . . . .	1 06
Cast Iron Shovels, small, per doz. . . . .	1 32
" " large " . . . . .	1 60
Cover Lifters, new pattern " . . . . .	0 68
Economist Shakers " . . . . .	1 20
Match Safes, nickel-plated . . . . .	2 00
Biscuit Bake Pans " . . . . .	2 40
Muffin " " " . . . . .	2 40
French Roll Bake Pans " . . . . .	2 40
Vienna " " " . . . . .	2 40

## TIN AND COPPER STOVE FURNITURE

7-inch Tinware, per set . . . . .	3 25
8 " " " " . . . . .	3 50
9 " " " " . . . . .	4 00
10 " " " " . . . . .	4 25
Planished Copper Tank for 8 Iron line . . . . .	4

BELLEVILLE

AND TORONTO



FOR CLEANING

Silver-plate, High silver, Zinc,  
Brass, Copper, Tin, or  
Plate Glass.

Warranted Superior to Anything in or  
on the Market.

GUARANTEED FREE FROM ALL ACIDS.

Put up in one-dozen boxes with handsome advertising  
card in each box.

PER GROSS, - \$21.00

LIBERAL DISCOUNT TO THE TRADE.

7

RANGES

FRIGIDERS

HARTE & SMITH

MANUFACTORY



STOVES

GRATES

