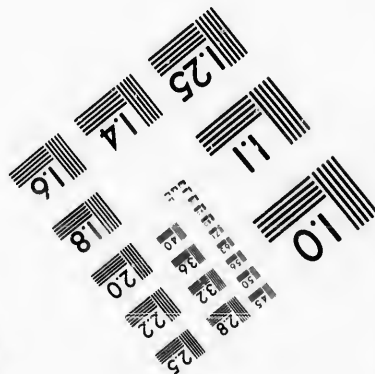
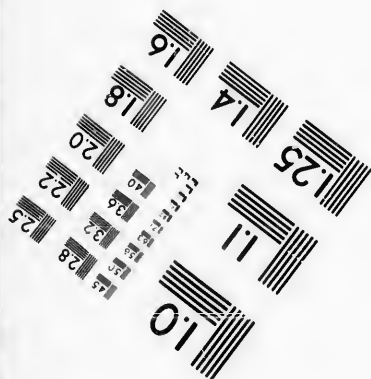
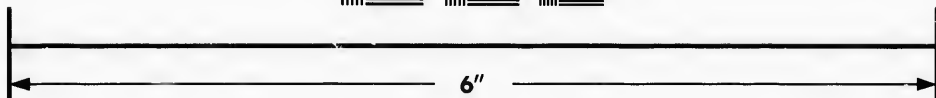
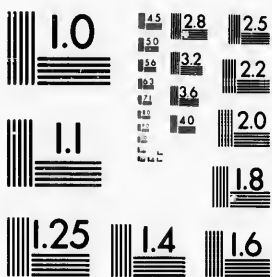


**IMAGE EVALUATION  
TEST TARGET (MT-3)**



**Photographic  
Sciences  
Corporation**

23 WEST MAIN STREET  
WEBSTER, N.Y. 14580  
(716) 872-4503

**CIHM/ICMH  
Microfiche  
Series.**

**CIHM/ICMH  
Collection de  
microfiches.**



**Canadian Institute for Historical Microreproductions / Institut canadien de microreproductions historiques**

**© 1987**

Technical and Bibliographic Notes/Notes techniques et bibliographiques

The Institute has attempted to obtain the best original copy available for filming. Features of this copy which may be bibliographically unique, which may alter any of the images in the reproduction, or which may significantly change the usual method of filming, are checked below.

L'Institut a microfilmé le meilleur exemplaire qu'il lui a été possible de se procurer. Les détails de cet exemplaire qui sont peut-être uniques du point de vue bibliographique, qui peuvent modifier une image reproduite, ou qui peuvent exiger une modification dans la méthode normale de filmage sont indiqués ci-dessous.

- Coloured covers/  
Couverture de couleur
- Covers damaged/  
Couvertures endommagées
- Covers restored and/or laminated/  
Couvertures restaurées et/ou pelliculées
- Cover title missing/  
Le titre de couverture manque
- Coloured maps/  
Cartes géographiques en couleur
- Coloured ink (i.e. other than blue or black)/  
Encre de couleur (i.e. autre que bleue ou noire)
- Coloured plates and/or illustrations/  
Planches et/ou illustrations en couleur
- Bound with other material/  
Relié avec d'autres documents
- Tight binding may cause shadows or distortion along interior margin/  
La reliure serrée peut causer de l'ombre ou de la distorsion le long de la marge intérieure
- Blank leaves added during restoration may appear within the text. Whenever possible, these have been omitted from filming/  
Il se peut que certaines pages blanches ajoutées lors d'une restauration apparaissent dans le texte, mais, lorsque cela était possible, ces pages n'ont pas été filmées.
- Additional comments: [Printed ephemera] [4] p.  
Commentaires supplémentaires:

- Coloured pages/  
Pages de couleur
- Pages damaged/  
Pages endommagées
- Pages restored and/or laminated/  
Pages restaurées et/ou pelliculées
- Pages discoloured, stained or foxed/  
Pages décolorées, tachetées ou piquées
- Pages detached/  
Pages détachées
- Showthrough/  
Transparence
- Quality of print varies/  
Qualité inégale de l'impression
- Includes supplementary material/  
Comprend du matériel supplémentaire
- Only edition available/  
Seule édition disponible
- Pages wholly or partially obscured by errata slips, tissues, etc., have been refilmed to ensure the best possible image/  
Les pages totalement ou partiellement obscurcies par un feuillet d'errata, une pelure, etc., ont été filmées à nouveau de façon à obtenir la meilleure image possible.

This item is filmed at the reduction ratio checked below/  
Ce document est filmé au taux de réduction indiqué ci-dessous.

10X	14X	18X	22X	26X	30X
<input type="checkbox"/>	<input type="checkbox"/>	<input type="checkbox"/>	<input checked="" type="checkbox"/>	<input type="checkbox"/>	<input type="checkbox"/>
12X	16X	20X	24X	28X	32X

The copy filmed here has been reproduced thanks to the generosity of:

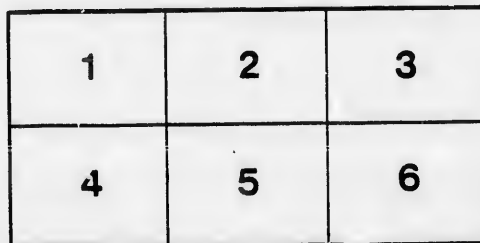
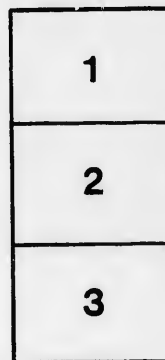
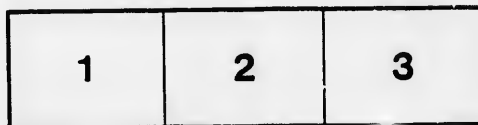
D. B. Weldon Library  
University of Western Ontario  
(Regional History Room)

The images appearing here are the best quality possible considering the condition and legibility of the original copy and in keeping with the filming contract specifications.

Original copies in printed paper covers are filmed beginning with the front cover and ending on the last page with a printed or illustrated impression, or the back cover when appropriate. All other original copies are filmed beginning on the first page with a printed or illustrated impression, and ending on the last page with a printed or illustrated impression.

The last recorded frame on each microfiche shall contain the symbol  $\rightarrow$  (meaning "CONTINUED"), or the symbol  $\nabla$  (meaning "END"), whichever applies.

Maps, plates, charts, etc., may be filmed at different reduction ratios. Those too large to be entirely included in one exposure are filmed beginning in the upper left hand corner, left to right and top to bottom, as many frames as required. The following diagrams illustrate the method:



L'exemplaire filmé fut reproduit grâce à la générosité de:

D. B. Weldon Library  
University of Western Ontario  
(Regional History Room)

Les images suivantes ont été reproduites avec le plus grand soin, compte tenu de la condition et de la netteté de l'exemplaire filmé, et en conformité avec les conditions du contrat de filmage.

Les exemplaires originaux dont la couverture en papier est imprimée sont filmés en commençant par le premier plat et en terminant soit par la dernière page qui comporte une empreinte d'impression ou d'illustration, soit par le second plat, selon le cas. Tous les autres exemplaires originaux sont filmés en commençant par la première page qui comporte une empreinte d'impression ou d'illustration et en terminant par la dernière page qui comporte une telle empreinte.

Un des symboles suivants apparaîtra sur la dernière image de chaque microfiche, selon le cas: le symbole  $\rightarrow$  signifie "A SUIVRE", le symbole  $\nabla$  signifie "FIN".

Les cartes, planches, tableaux, etc., peuvent être filmés à des taux de réduction différents. Lorsque le document est trop grand pour être reproduit en un seul cliché, il est filmé à partir de l'angle supérieur gauche, de gauche à droite, et de haut en bas, en prenant le nombre d'images nécessaire. Les diagrammes suivants illustrent la méthode.

*London J. Fallows.  
Only*

OPEN WINDOW WITHOUT SCREENS.



*J. Fallows  
London  
Only*

**MISERY!**

OPEN WINDOW WITH SCREENS:



**COMFORT!**

Secured by using Crown Adjustable Window and Door Screens, made by Otter Sweeper Co., Limited, Otterville, Ont., Canada.

# CROWN WINDOW SCREEN.

ADJUSTABLE (PATENTED.)

COMPLETE WITH WIRE CLOTH.



The above cut represents our Adjustable Window Screen, which can be readily fitted to different sized windows. It is a model of simplicity, strength, durability and convenience. The frames are constructed entirely of hardwood, and finished in oil. To put it in place raise the window and adjust the screen, being careful to have the screw in the slot of frame on the inside and top, then let the window rest on top of frame.

No. 1.	22 inches high,	26 to 32 inches wide.	Per dozen, \$12.00
" 2.	24 " "	28 to 34 " "	" \$14.00
" 3.	26 " "	32 to 38 " "	" \$16.00
" 4.	28 " "	28 to 34 " "	" \$16.00
" 5.	30 " "	32 to 38 " "	" \$18.00

They are suited to the finest residences.

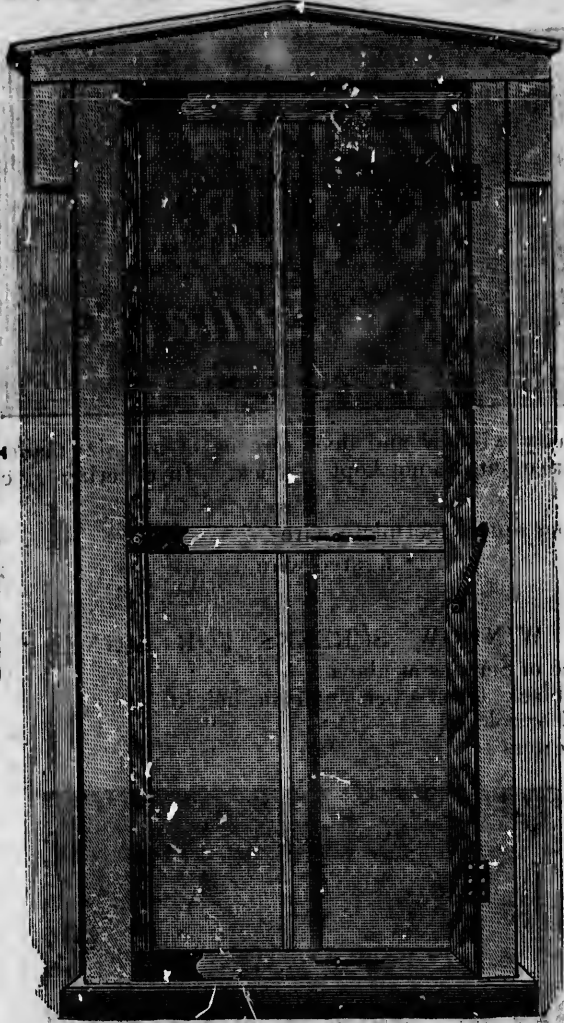
They are cheaper in price than a common window screen made of soft wood.

You save the expense of fitting by a carpenter.

They will fit any window.

**CROWN DOOR SCREEN**  
**PATENTED.**

Prices if required.



Spring and Hinges at Wholesale

**SIZES.**

No. 1.	2ft. 5in. to 2ft. 10in. wide,	6ft. 6in. to 6ft. 8 high.	Per dozen, \$35 00.
No. 2.	2ft. 6in. " 2ft. 10in. do	6ft. 8in. to 6ft. 10 do	" 33 00.
No. 3.	2ft. 6in. " 3ft. do	6ft. 10in. to 7ft. do	" 36 00.

People buy them because they are the most convenient to use, because they are elegant and cheap. Farmers buy them because they do not require a carpenter to hang them. Everybody wants them because they add to the comfort and appearance of the house.

**OTTER SWEEPER CO., OTTERVILLE, ONT.**

# STATIONARY SCREENS.



Stationary window and door screens of any size made to order on short notice but are not kept in stock. In ordering give outside measures.

Price per square foot plain wire	15c.
“ “ “ figured wire	20c.

## WINDOW SCREENS FOR SIGNS.

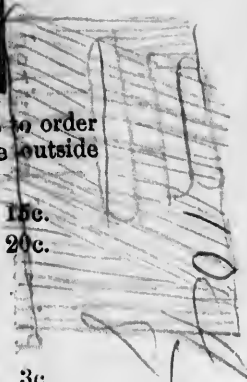
Add to price of Screens as above :—

Plain black letter—per inch in height	3c.
Shaded or colored “ “	4c.
Gold letters “ “	6c.



## FIGURED WIRE CLOTH.

OTTER SWEEPER CO., Otterville, Ont.



Handwritten notes and measurements on the left side of the page, including a vertical line with tick marks and numbers like 1/2, 3/4, 1, 1 1/4, 1 1/2, 1 3/4, 2, 2 1/4, 2 1/2, 2 3/4, 3, 3 1/4, 3 1/2, 3 3/4, 4, 4 1/4, 4 1/2, 4 3/4, 5, 5 1/4, 5 1/2, 5 3/4, 6, 6 1/4, 6 1/2, 6 3/4, 7, 7 1/4, 7 1/2, 7 3/4, 8, 8 1/4, 8 1/2, 8 3/4, 9, 9 1/4, 9 1/2, 9 3/4, 10.

Handwritten notes and measurements at the bottom of the page, including a series of numbers and fractions: 1/2, 3/4, 1, 1 1/4, 1 1/2, 1 3/4, 2, 2 1/4, 2 1/2, 2 3/4, 3, 3 1/4, 3 1/2, 3 3/4, 4, 4 1/4, 4 1/2, 4 3/4, 5, 5 1/4, 5 1/2, 5 3/4, 6, 6 1/4, 6 1/2, 6 3/4, 7, 7 1/4, 7 1/2, 7 3/4, 8, 8 1/4, 8 1/2, 8 3/4, 9, 9 1/4, 9 1/2, 9 3/4, 10.



