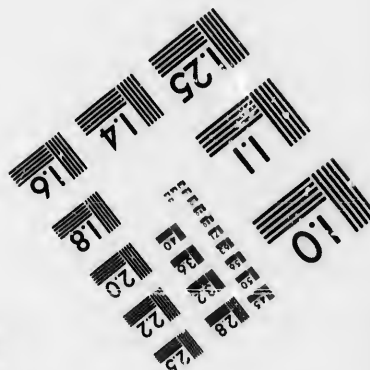
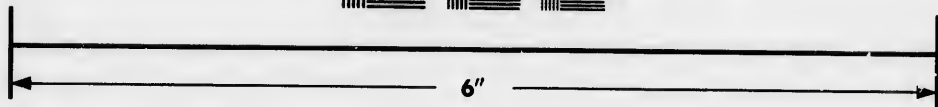
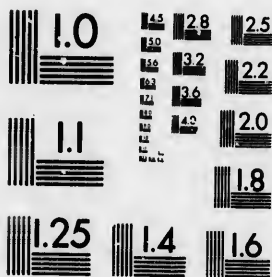


**IMAGE EVALUATION
TEST TARGET (MT-3)**



**Photographic
Sciences
Corporation**

23 WEST MAIN STREET
WEBSTER, N.Y. 14580
(716) 872-4503

**CIHM/ICMH
Microfiche
Series.**

**CIHM/ICMH
Collection de
microfiches.**



Canadian Institute for Historical Microreproductions / Institut canadien de microreproductions historiques

© 1987

Technical and Bibliographic Notes/Notes techniques et bibliographiques

The institute has attempted to obtain the best original copy available for filming. Features of this copy which may be bibliographically unique, which may alter any of the images in the reproduction, or which may significantly change the usual method of filming, are checked below.

L'Institut a microfilmé le meilleur exemplaire qu'il lui a été possible de se procurer. Les détails de cet exemplaire qui sont peut-être uniques du point de vue bibliographique, qui peuvent modifier une image reproduite, ou qui peuvent exiger une modification dans la méthode normale de filmage sont indiqués ci-dessous.

- | | |
|--|--|
| <input checked="" type="checkbox"/> Coloured covers/
Couverture de couleur | <input type="checkbox"/> Coloured pages/
Pages de couleur |
| <input type="checkbox"/> Covers damaged/
Couverture endommagée | <input type="checkbox"/> Pages damaged/
Pages endommagées |
| <input type="checkbox"/> Covers restored and/or laminated/
Couverture restaurée et/ou pelliculée | <input type="checkbox"/> Pages restored and/or laminated/
Pages restaurées et/ou pelliculées |
| <input type="checkbox"/> Cover title missing/
Le titre de couverture manque | <input checked="" type="checkbox"/> Pages discoloured, stained or foxed/
Pages décolorées, tachetées ou piquées |
| <input type="checkbox"/> Coloured maps/
Cartes géographiques en couleur | <input type="checkbox"/> Pages detached/
Pages détachées |
| <input type="checkbox"/> Coloured ink (i.e. other than blue or black)/
Encre de couleur (i.e. autre que bleue ou noire) | <input checked="" type="checkbox"/> Showthrough/
Transparence |
| <input type="checkbox"/> Coloured plates and/or illustrations/
Planches et/ou illustrations en couleur | <input type="checkbox"/> Quality of print varies/
Qualité inégale de l'impression |
| <input type="checkbox"/> Bound with other material/
Relié avec d'autres documents | <input type="checkbox"/> Includes supplementary material/
Comprend du matériel supplémentaire |
| <input type="checkbox"/> Tight binding may cause shadows or distortion
along interior margin/
La reliure serrée peut causer de l'ombre ou de la
distorsion le long de la marge intérieure | <input type="checkbox"/> Only edition available/
Seule édition disponible |
| <input type="checkbox"/> Blank leaves added during restoration may
appear within the text. Whenever possible, these
have been omitted from filming/
il se peut que certaines pages blanches ajoutées
lors d'une restauration apparaissent dans le texte,
mais, lorsque cela était possible, ces pages n'ont
pas été filmées. | <input type="checkbox"/> Pages wholly or partially obscured by errata
slips, tissues, etc., have been refilmed to
ensure the best possible image/
Les pages totalement ou partiellement
obscurcies par un feuillet d'errata, une pelure,
etc., ont été filmées à nouveau de façon à
obtenir la meilleure image possible. |
| <input type="checkbox"/> Additional comments:
Commentaires supplémentaires: | |

This item is filmed at the reduction ratio checked below/
Ce document est filmé au taux de réduction indiqué ci-dessous.

10X	14X	18X	22X	26X	30X
<input type="checkbox"/>	<input type="checkbox"/>	<input checked="" type="checkbox"/>	<input type="checkbox"/>	<input type="checkbox"/>	<input type="checkbox"/>
12X	16X	20X	24X	28X	32X

ails
du
odifier
une
image

The copy filmed here has been reproduced thanks to the generosity of:

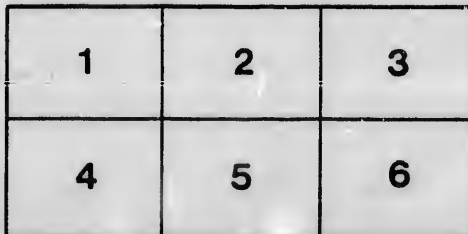
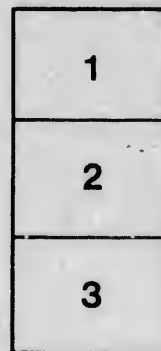
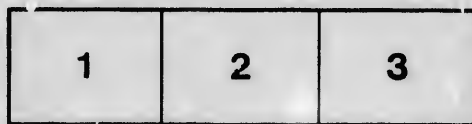
Seminary of Quebec
Library

The images appearing here are the best quality possible considering the condition and legibility of the original copy and in keeping with the filming contract specifications.

Original copies in printed paper covers are filmed beginning with the front cover and ending on the last page with a printed or illustrated impression, or the back cover when appropriate. All other original copies are filmed beginning on the first page with a printed or illustrated impression, and ending on the last page with a printed or illustrated impression.

The last recorded frame on each microfiche shall contain the symbol \rightarrow (meaning "CONTINUED"), or the symbol ∇ (meaning "END"), whichever applies.

Maps, plates, charts, etc., may be filmed at different reduction ratios. Those too large to be entirely included in one exposure are filmed beginning in the upper left hand corner, left to right and top to bottom, as many frames as required. The following diagrams illustrate the method:



L'exemplaire filmé fut reproduit grâce à la générosité de:

Séminaire de Québec
Bibliothèque

Les images suivantes ont été reproduites avec le plus grand soin, compte tenu de la condition et de la netteté de l'exemplaire filmé, et en conformité avec les conditions du contrat de filmage.

Les exemplaires originaux dont la couverture en papier est imprimée sont filmés en commençant par le premier plat et en terminant soit par la dernière page qui comporte une empreinte d'impression ou d'illustration, soit par le second plat, selon le cas. Tous les autres exemplaires originaux sont filmés en commençant par la première page qui comporte une empreinte d'impression ou d'illustration et en terminant par la dernière page qui comporte une telle empreinte.

Un des symboles suivants apparaîtra sur la dernière image de chaque microfiche, selon le cas: le symbole \rightarrow signifie "A SUIVRE", le symbole ∇ signifie "FIN".

Les cartes, planches, tableaux, etc., peuvent être filmés à des taux de réduction différents. Lorsque le document est trop grand pour être reproduit en un seul cliché, il est filmé à partir de l'angle supérieur gauche, de gauche à droite, et de haut en bas, en prenant le nombre d'images nécessaire. Les diagrammes suivants illustrent la méthode.

rata
D

elure,
à

2X

219

FREE ISSUE.

Guide Can. & U. No. 10

MONTREAL ICE CARRYING

SPECIAL ISSUE



Dominion Railway Pocket Guide

FOR FEBRUARY, 1884.



Carnival Sports Commencing Monday, Feb. 4,
Ending Saturday, Feb. 9.

CONTENTS:

Carnival Programme; Railway Time Tables; Cab Fares;
Arrival and Departure of Mails; Banks and Places
of Interest. This issue of Guide to be had
on all lines of leading Railways
and at all Ticket Offices
in Montreal.

ENTERPRISE PUBLISHING CO.,
Montreal and Toronto.

DOMINION LINE,

**Running in Connection with the Grand
Trunk Railway.**



Composed of the following Full powered Double Engine'd
Clyde built Iron Steamships:—

	Tons.			Tons.
Brooklyn	4,600		*Oregon	3,850
*Sarnia	3,850		Toronto	3,300
Montreal	3,300		Dominion	3,200
Ontario	3,200		Mississippi	2,700
Texas	2,700		Quebec	2,700
			*Vancouver, 5,700 tons.	

Sailing from PORTLAND, Me., every THURSDAY in the
Winter, and QUEBEC every SATURDAY in the Summer
for

LIVERPOOL.

Have first class accommodation for Cabin, Intermediate
and Steerage passengers, carrying Stewards, Stewardesses
and Surgeon, for the comfort and convenience of passengers.
*These Steamers have Saloon, Music Room, State Rooms,
Smoking Room and Bath Rooms amidships—where but
little motion is felt, and are luxuriously fitted.

Cabin rates from Portland, \$50, \$60 and \$70. Cabin
rates from Quebec, \$50, \$60, \$65 and \$80. Intermediate,
\$40. Steerage at lowest rates.

The voyage from Quebec in Summer, is the most desir-
able one for passengers, being nearly 500 miles shorter
than from New York, and three days of it in the compara-
tively smooth waters of the Gulf and River St. Lawrence,
famed for its beautiful and picturesque scenery.

For further information apply to

DAVID TORRANCE & CO.,
Gen'l. Agents, Montreal.

Or to
FLINN, MAIN & MONTGOMERY,
24 James St., Liverpool.

CANADA PAPER CO.

374, 376 & 378 St. PAUL STREET.

MONTREAL.

WESTERN BRANCH,

FRONT STREET WEST,

TORONTO.



ESTABLISHED 1850.

J. H. WALKER,
WOOD ENGRAVER AND DESIGNER,

126 ST. JAMES STREET,

MONTREAL.

(OPPOSITE THE POST OFFICE.)



Awarded to **R. BLACKWOOD & Co.**, of Montreal,
by the United States Centennial Commission for
superiority of Ginger Ale, Soda Water,
Lemonade and Mineral Waters.

Medal Awarded, Paris 1878.

Diploma Awarded Provincial Exhibition, 1877

The only firm in the Dominion awarded Medals for

GINGER ALE

at the Centennial and Paris Exhibitions.

Our *Æ*rated Waters this season, 1884, will be found
superior to the Imported. Orders from all parts of the
Dominion promptly executed.

R. BLACKWOOD & CO.,

OFFICE: 350 NOTRE DAME STREET

MONTREAL, P.Q.

MONTREAL

Ice Carnival.

SPECIAL ISSUE

Dominion Railway Pocket Guide

FOR FEBRUARY, 1884.

Under the distinguished patronage of

His Excellency the Governor-General of
Canada and Lady Lansdowne
and Suite.

Carnival Sports Commencing Monday, February 4th,
Ending Saturday, February 9th.

CHAS. D. EDWARDS,

MANUFACTURER OF

FIRE PROOF AND BURGLAR PROOF



SAFES

NO. 39 ST. JAMES STREET WEST,

MONTREAL.

Call and see the safe from S. Davis & Sons great
fire ; **62** hours exposed ; all contents saved.

INDEX TO RAILWAYS AND ADVERTISEMENTS.

Dominion Steamship Co., from Portland to Liverpool (inside front wrapper).....	1
Macdonald, J. & Co., Toronto Importers of Dry Goods (outside back wrapper).....	2
Hall, James & Co., Brockville Glove Manufacturers [inside back wrapper].....	6
Canada Paper Co., and J. H. Walker, Engraver....	4
Blackwood, R. & Co., Montreal Mineral Waters.....	8
Holden, Ames & Co., Montreal Boot & Shoe Manufac- turers.....	4
Edwards, C. D., Montreal Fire Proof Safes.....	8
Nelson, H. A. & Sons, Montreal Wholesale Fancy Goods, Woodenware, &c. &c.....	10
Samuel W. Furrier and Chas. Alexander, Confect- ioners, Montreal.....	30
Bell, J. & T., Montreal, Wholesale and Retail Boots and Shoes.....	11
Walker, W. S., Jeweller, and A. T. Hollander, Jewel- ler, Montreal.....	14
Victoria Square Laundry, Montreal, Scotland.....	32
Don Brewing & Malting Co., Toronto, T. & S. & Co.....	17
Canada Pacific Railway West & East.....	19
Canada Pacific arrival and departure of all Trains....	21
Central Vermont.....	23
Grand Trunk Montreal to Boston and Boston to Mon- treal.....	25
Grand Trunk Montreal, Toronto, Detroit and Chicago. Grand Trunk Chicago to Detroit, Toronto and Mon- treal.....	27
Grand Trunk arrival and departure of all Trains via G. T. R., to and from Montreal.....	26
Intercolonial Railway, Toronto to Halifax and St. John, N.B., Halifax to Montreal and Toronto, Delaware and Hudson and South Eastern.....	24
North Shore Canada Atlantic.....	20
Erie Railway Advertisement.....	22
G. T. R. Advertisement.....	16
C. P. R. Advertisement.....	18
Intercolonial Advertisement.....	

AMES, HOLDEN & CO.,

VICTORIA SQUARE,

MONTREAL.

ESTABLISHED 1853.

MANUFACTURERS AND WHOLESALE DEALERS IN ALL KINDS OF

Men's Women's, Boy's, Misses & Children's

BOOTS & SHOES.

—:0:—

WE beg to notify the Trade through the Dominion that we have now the best equipped and most complete Factory in Canada, and, with the advantage of our long experience, we are enabled to manufacture goods of a very superior quality and finish, and to maintain the leading position in the trade which we have held the past quarter of a century. Merchants unacquainted with our Goods are invited to correspond with us, and we are ready to send them samples when desired.

AMES, HOLDEN & Co.

PROGRAMME

Of the Montreal Grand Ice Carnival under the distinguished Patronage of His Excellency the Governor General of Canada, Lord Lansdowne, Lady Lansdowne, and suite.

MONDAY, FEBRUARY 4th.

Morning and afternoon—Commencement of Curling Bonspiel, if practicable. Grand Hockey Tournament on outdoor skating rink. Evening—Inauguration of Ice Palace on Dominion Square, illuminated by electric light with pyrotechnic displays every evening during the week. Special illumination of the grounds of the Montreal Tobogganning Club, Sherbrooke street west. Hockey match at Victoria Skating Rink.

TUESDAY FEBRUARY 5th.

Morning—Curling Bonspiel continued. Hockey Tournament continued. Contractors' drive and banquet. Afternoon—Snowshoe races, Montreal Lacrosse Grounds. Evening—Fifteen miles race, Victoria Rink. Fancy dress carnival, Crystal Skating Rink. Grand opening and illumination of the Tuque Blue Toboggan Club grounds.

WEDNESDAY, FEBRUARY 6th.

Civic holiday and grand gala day of Carnival. Morning—Skating and promenade concert, Victoria Skating Rink. Trotting races at Driving Park. Curling Bonspiel continued. Hockey Tournament continued. Afternoon—Grand sleighing parade, marshalled on Dominion Square. Lacrosse, the national game of Canada, on skates. Evening—Grand torchlight procession of snowshoe clubs of the city and vicinity, and impromptu concert on return. Attack on and defence of Ice Palace, with special display of fireworks.

THURSDAY, FEBRUARY 7th.

Morning—Curling Bonspiel continued. Hockey Tournament continued. Afternoon—Trotting races at Driving Park continued. Snowshoe steeplechase over Mount Royal. Evening—Grand fancy dress carnival at Victoria Skating Rink—ice temple, grotto and fountains. Groups of skaters will illustrate the chief historical celebrities of Canada, the leading pursuits and the principal sports of the Dominion. Grand opening and illumination of the Park Toboggan Club, Mount Royal.

H. A. NELSON & SONS,
 IMPORTERS AND WHOLESALE DEALERS IN
EUROPEAN AND AMERICAN
FANCY GOODS,

AND MANUFACTURERS OF

Brooms, Brushes, Woodenware & Matches,

59, 61 & 63 St. PETER STREET,

MONTREAL.

—AND—

56 & 58 FRONT STREET WEST,

TORONTO.

FRIDAY, FEBRUARY 8th.

Morning—Hockey tournament continued. Curling Bonspiel continued. Skating and promenade concert at Victoria Rink. Afternoon—Trotting races continued. Races and games on the out-door skating rink. Evening—Grand ball at the Windsor Hotel. Skating competition, ten mile race, Crystal Rink. Races and games, Victoria Skating Rink.

SATURDAY, FEBRUARY 9th.

Termination of Hockey Tournament and Curling Bonspiel. Afternoon—Montreal Snowshoe Club annual games on Lacrosse grounds. Tandem Club meet, Dominion Square. Evening—Hockey match, Victoria Rink. Grand pyrotechnic display at Ice Palace. Special illumination of Toboggan Hills.

The toboggan hills of the Montreal, Tuque Blue and Park Clubs will be at the disposal of visitors during Carnival week, and members of these clubs will welcome strangers to their grounds. Special tickets for Carnival week, admitting holders to all the privileges of membership, will be issued by the Victoria Skating Club, whose rink is the largest and most commodious in America. Special Carnival excursion trains have been arranged for by the railways entering Montreal. Full particulars as to reduced fares, etc., may be obtained at railroad ticket offices in Canada and United States. Extensive accommodation for strangers has been secured.

CONTENTS.

	Page.
Montreal Ice Carnival Programme.....	7-9
Arrival and departure of Mails—to and from Montreal.	11
Banks and Hotels in Montreal and other Cities.....	13
Places of Interest in and around Montreal.....	31
Places of Amusement—Athletic Clubs, &c.....	29
Cab Rates and principal Railway Ticket Offices.....	15

HIGHEST AWARDS FOR FINE FURS,

Dominion Exhibition, Montreal, 1880.

WILLIAM SAMUEL,

IMPORTER AND MANUFACTURER OF

Hats, Caps and Fine Furs,

367 NOTRE DAME STREET,

MONTREAL.

14 FIRST PRIZES and GOLD MEDAL, Provincial Exhibition, 1881.

Confectionery, Luncheon and Dining Room,

CHAS. ALEXANDER,

219 St. James Street,

MONTREAL.

Visitors to the WINTER CARNIVAL are respectfully invited to call at the above well-known establishment, where will be found a large and choice assortment of Confectionery, Candies, Chocolates, Bon-Bons, etc., put up in 1 lb., 2 lb. and 4 lb. boxes, fresh daily and warranted pure.

DINING HALL,

Breakfast, Dinner and Tea,

OYSTERS SERVED IN EVERY STYLE.

219 ST. JAMES STREET.

MONTREAL POST OFFICE.

DESPATCH OF MAILS.	Closed.	
	A.M.	P.M.
St. Johns, Stanbridge and St. Armand St'n..	6.00
Beauharnois, Huntingdon, etc.	6.00
Eastern Townships, Three Rivers, Arthabaska and Riviere du Loup. R.R.	7.00
C. P. Railway, St. Jerome & St. Janvier....	7.00
St. Laurent, St. Martin, &c.....	7.00
Acton & Sorel Railway.....		8.00
New Brunswick, Nova Scotia & P.E.I.....		8.00
Newfoundland from Halifax.		8.00
Portland & N.E. States, except Boston.....		8.00
Boucherville, Contrecoeur, Varennes & Vercheres.....		1.45
Lachine.....	6.00	2.00
Tanneries West [St. Henri de M.] & St. Cunegende.....	6.00	2.00
Toronto, West of Toronto, Manitoba & B. C.	9.45	8.00
Western and Pacific States.....	9.45	8.00
Province of Ontario east of Toronto.....	6.30	8.00
Canada Atlantic Railway.....	7.45
Quebec, Berthier, Sorel, Three Rivers, and North Shore, postal car.....	8.00
Berthier, St. Leon Springs & Three Rivers, through bag.....		8.00
do Bordeaux, St. Jerome & St. Lin branch.....		4.45
St. Remi, Hemmingford & Laprairie Ry....		4.00
St. Hyacinthe, Sherbrooke, Coaticook, &c ..	6.00	2.15
St. Johns, Vermont Junc. & Shefford Rys ..		2.15&8
South-Eastern Railway.....		4.30
VaHeyfield, Valois, Dorval, P. Claire, St. Ann's.....		4.30
Cote St. Antoine & Notre Dame de Grace...	9.00	12.45
Hochelaga.....	8.00	2.00&5
Laprairie.....	11.00	3.00
Longueuil.....	6.00	1.45&4
Longue Pointe, P.-aux-Trem. & Charlemange.....		3.00
Point St. Charles.....	7.45	12½ 5½
St. Lambert.....		2.15
St. Eustache.....	7.00	4.45
Mile End and Cote St. Louis [morning only]	7.00	3.30
New York City & State & Southern States..	6.00	4½&6½
Boston, Mass.....	6.00	6.15
New England States, except Maine.	6.00	2½&4½

12

W. S. WALKER,

IMPORTER OF

Diamonds, Fine Watches and Jewellery,

ENGLISH AND FRENCH CLOCKS,

SILVER and SILVER-PLATED WARE, &c., &c.

No. 321 Notre Dame Street,

(OPPOSITE THE SEMINARY CLOCK,)

MONTREAL.

Established 1853.

A. T. HOLLAND & CO.,

Exchange Brokers

98 ST. FRANCOIS XAVIER STREET,

MONTREAL.

POSTAGE AND BILL STAMPS SOLD BY AUTHORITY

BANKS IN SOME
— OF THE —
LEADING CITIES IN THE DOMINION.

Place.	Name.	Place.	Name.
Montreal,	Bk. of Commerce.	Ottawa..	British N. America
"	British N. America.	"	..Bk. of Commerce.
"	Hochelaga Peoples.	"	..Nationale.
"	Jacques-Cartier.	"	..Merchants Bank.
"	Merchants-Molsons.	"	..Montreal-Ontario.
"	Montreal Nationale.	"	..Ottawa-Quebec.
"	Ontario-Quebec.	"	..Union Bank.
"	Toronto-Union Bk.	Halifax,	s.Bk. of N. Scotia.
"	Ville Marie.	"	British N. America.
Toronto.	British N. America.	"	Halifax Bank'ng Co
"	Commerce-Quebec.	"	Mer'chts Bank of H.
"	Dominion-Federal.	"	Montreal-Peoples.
"	Imperial Bank.	"	Union Bk. of H'fax.
"	Merchants Bank.	St. John.	N.B. Bk. of N.B.
"	Molsons-Montreal.	"	Bank of N.S.
"	Ontario-Quebec.	"	British N. America.
"	Standard-Toronto.	"	Maritime-Montreal.

**Leading Hotels in Montreal and some of the Principal
Cities in the Dominion.**

Place.	Name.	Name.	Place.
Montreal..	Windsor.	Toronto..	Queen's.
"	..St. Law'nce Hall.	"	..Rossin.
"	..Albion.	"	..Walker.
"	..Richelieu.	"	..American.
"	..Canada.	"	..Revere.
"	..American.	Ottawa..	The Russell.
"	..N. York House.	"	..Windsor.
Quebec..	St. Louis & Russell.	"	..Grand Union.
"	..Albion.	Halifax,	N.S. Halifax House
"	..Mountain Hill.	"	..International.
"	..Henchey's.	"	..Waverly.
"	..Blanchard's.	St. John,	N B..Royal.
London, Ont..	Tecumseh.	"	..Waverley.
"	..Gregg House.	"	..New Victoria.
		"	..International.

VICTORIA SQUARE LAUNDRY.

THE MOST POPULAR LAUNDRY IN THE CITY

We employ only the most experienced hands, and the steadily increasing number of our customers is proof that our work gives general satisfaction.

No Washing Machines or Chemicals Used.

All hand-to-hand work.

All are cordially invited to visit the Laundry at any time, to satisfy themselves that everything is done as advertised. Shirts and Collars made to order **A SPECIALTY**, and a perfect fit guaranteed.

Also, Shirts and Collars manufactured for shops at reasonable rates.

Clothes called for every day in the week, and returned in the afternoon of the Third day after, to any part of the city.

In particular cases, washing can be finished and returned in a few hours.

Orders left at the Office or through the Post Office will be attended to promptly, and a List Book sent.

ENTRANCE :

No. 3 ST. JAMES STREET WEST.

L. W. SCOTT & CO.,

Proprietors.

MONTREAL CAB TARIFF.

From any place to any others, provided the time occupied does not exceed 20 minutes..	} Persons	1 Horse	2 Horse
	1 or 2	\$0.25	\$0.50
	3 or 4	0.50	0.65

When time exceeds above mentioned for distance, hour rates to be charged.

From any place to any other, and back, provided the time occu- pied do not exceed 30 minutes	} 1 or 2	0.40	0.65
" " "	3 or 4	0.60	0.75

BY THE HOUR.

One hour	1 or 2	0.75	1.00
"	3 or 4	1.00	1.25
Every subsequent hour	1 or 2	0.60	1.00
"	3 or 4	0.75	1.25

REMARKS.—For each trunk or box carried in any vehicle—10c. Fractions of hours to be charged at hour rates; not less than one quarter of an hour shall be charged when the time exceeds an hour. Tariff by the hour to apply to all rides extending beyond the city limits, where the engagement is commenced and concluded within the city. Fifty per cent to be added to the tariff rate night till four a.m.

PRINCIPAL RAILWAY TICKET OFFICES.

Canadian Pacific Railway, Head office 101, 103 St. James Street.

Grand Trunk Railway, 143 St. James st., W. O'Brien, Agt.

Delaware & Hudson Railway, 143 St. James st., C. C. McFall, Agt.

Central Vermont Railway, 136 St. James st., A. C. Stonegrave, Agt.

South Eastern Railway, 202 St James st., A. B. Chaffee, Jr., Agt.

North Shore Railway, 143 St. James st.

CANADIAN PACIFIC RAILWAY

EASTERN DIVISION.

Through without Change, with Speed Unrivalled

THE OLD RELIABLE

MONTREAL & OTTAWA

SHORT LINE

—BETWEEN—

THE METROPOLIS OF CANADA

—AND—

The Capital of the Dominion

And the Boundless Lumber Districts of the

UPPER OTTAWA RIVER.

THE GREAT SCENIC ROUTE OF CANADA.

W. C. VAN HORNE,
Gen'l. Manager,

ARCHER BAKER,
Gen'l. Super't.,

GEO. W. HIBBARD,
Asst. Gen'l. Pass. Agt.

CANADIAN PACIFIC RAILWAY.

EASTERN DIVISION.

CONDENSED TIME TABLE.

GOING WEST.

Montreal and Ottawa to Smith's Falls, Irish Creek and Brockville

STATION.	Mls. frm Montreal	Express and Mixed.	Night Express.
Montreal	1	8.45 a.m.	
St. Martin Junction	12	9.10	4 30 p.m
Lachute.....	43	10.00	6.15
Calumet.....	59	10.25	6.50
{ Arr.		10.35	7.00
{ Lve.	118	12.10 p.m.	8.54
Hull		12.15	9.00
Ottawa.....	120	4.20	10.30
{ Arr.		5.20	11.35
{ Lve.	149	6.00	11.50
Carleton Junct'n.		7.15	12.30
Smith's Falls	195	9.00	1.35
Brockville		Arr	

GOING EAST.

Brockville, Irish Creek and Smith's Falls to Ottawa and Montreal

Brockville.....lve.		4.10 a.m.	4.10 p.m
Smith's Falls	28	5.15	5.00
Carleton Junct'n.	46	5.50	5.33
{ Arr.		6.00	5.40
{ Lve.	75	7.00	6.30
Ottawa.....		8.15	6.35
Hull	77	8.20	6.40
Calumet	136	10.25	8.38
{ Arr.		10.35	8.46
{ Lve.	152	11.09	9.19
Lachute		183	12.15
St. Martin Junction.....	183	12.45	10.56
Montreal	195		

Intercolonial Railway.

YEARS OF EXPERIENCE HAVE PROVED
The INTERCOLONIAL
 TO BE THE QUICKEST ROUTE FOR
EUROPEAN FREIGHT

To and from all parts in Canada and the West.

MERCHANTS and CONSIGNEES should bear this fact in mind, and order their CANADIAN FREIGHT "via HALIFAX" per **INTERCOLONIAL**, avoiding all foreign vexatious Customs regulations, and days of delay in transit by other routes.

THE INTERCOLONIAL

Has now the finest terminal facilities of any Railway on the Atlantic Sea-board, having deep water Termini on the principal Harbours in Canada, viz.,

HALIFAX, PICTOU,

SHEDIAC, ST. JOHN,

NEWCASTLE and QUEBEC.

THUS BECOMING THE

GREAT CANADIAN HIGHWAY
TO THE OCEAN.

CANADIAN PACIFIC RAILWAY.

(EASTERN DIVISION.)

The Old Reliable Montreal and Ottawa Short Line.

Winter Arrangement in effect, Monday, Dec. 24th, 1883.
Trains run on standard time (6 minutes slower than Montreal time.)

TIME TABLE.	Local Express.	Fast Express.	Local Express.
Leave Montreal.	7.00 a.m.	8.45 a.m.	4.30 p.m.
Arrive Ottawa.	11.30 "	12.15 p.m.	9.90 "
Leave Ottawa.	8.15 a.m.	4.30 p.m.	6.35 p.m.
Arrive Montreal.	12.45 p.m.	8.00 "	10.56 "

Close connection at Ottawa, with trains to and from BROCKVILLE, PERTH, SUDBURY, NORTH BAY, PEMBROKE, and all points in the Upper Ottawa Valley. For full information regarding Time Tables of all through and Local Trains, Tickets, Seats in Parlor Cars, &c., apply at the Company's new City Ticket Office, 154 St. James Street, Windsor Hotel Ticket Office, Quebec Gate Station, Hochelaga, and Mile End Depots.

GEO. W. HIBBARD.

Asst.-Gen. Pass. Agent.

W. C. VAN HORNE,
Gen'l Manager.

ARCHER BAKER,
Gen. Supt.

DALHOUSIE SQUARE STATION.

CANADA PACIFIC RAILWAY.

LEAVE FOR OTTAWA—Express, 7.00, 8.45 a.m., 4.30 p.m.
St. Jerome, 10.45 a.m. and 5.00 p.m. St. Lin, 5.00 p.m.
St. Eustache, 4.40 p.m. ARRIVE—From Ottawa, Express,
12.45 p.m., 8.00 p.m. and 10.56 p.m. From St. Jerome,
8.35 a.m., 3.50 p.m. From St. Lin, 8.35 a.m. From St.
Eustache, 9.48 a.m.

NORTH SHORE RAILWAY.

For Three Rivers and Quebec—3 and 10 p.m. Sunday.
train, 4.00 p.m. Joliette and St. Felix de Valois—5.15 p.m.
Arrive from Quebec—6.30 a.m. and 4.05 p.m. Sunday,
10.35 p.m. From Joliette and St. Felix de Valois, 8.50
a.m.

New Route to Boston!

—VIA—

N. Y., L. ERIE & W.R.R.

D. & H., B. H. T. & W. and Fitchburg R.R's.

*This Line has been recently opened and
is equipped with*

Pullman Palace Sleeping Coaches

WHICH ARE RUN THROUGH TO
BOSTON WITHOUT CHANGE.

FOR PASSENGERS FOR ALBANY, NORTH
ADAMS, FITCHBURG, BOSTON and OTHER
EASTERN CITIES, will find this the PLEASANT-
EST and MOST DESIRABLE Route.

TICKETS AND SLEEPING CAR BERTHS

VIA THIS ROUTE
CAN BE PROCURED OF ALL AGENTS SELLING
ERIE RAILWAY TICKETS.

J. S. BARTLETT,
Northern Pass. Agt., Buffalo, N. Y.

E. S. BOWEN,
Supt. New York.

CENTRAL VERMONT R. R.

Green Mountain Route.

TRAINS LEAVE MONTREAL.

8.30 a.m.—Fast Train arriving at St. Albans 10.50 a.m., Burlington 12.10 p.m., Montpelier 12.56 p.m., White River Junction 2.40 p.m., and Boston, via Concord, Manchester and Lowell 7.05 p.m., New London 9.50 p.m., and New York via Springfield at 11.10 p.m.

5.30 p.m.—Night Express—Arriving at St. Albans 7.55 p.m., Burlington 9.10 p.m., Rutland 11.20 p.m., Troy 2.05 a.m., Albany 2.25 a.m., and New York 7.30 a.m. Also to Waterloo and Magog, Montpelier, White River Junction, Bellows Falls, Northampton, Holyoke, Springfield, New York, via New Haven and Boston, via Fitchburg, arriving 9.27 a.m.

8.30 p.m.—Boston Night Express—Arriving St. Albans 10.40 p.m., Burlington 12.10 a.m., Montpelier 1.00 a.m., White River Junction 2.45 a.m., Concord 5.35 a.m., Manchester 6.18 a.m., Lowell 7.38 a.m., and Boston 8.30 a.m. Close connections at White River Junction for all New England points.

GOING NORTH.

The Night Express via Troy leaves New York at 6.30 p.m., arriving in Montreal at 8.25 a.m. Day express leaves Boston, via Fitchburg 8.00 a.m., via Lowell 8.30 a.m., arriving in Montreal 8.30 p.m. Fast Train leaves Boston via Lowell at 1.00 p.m., New York via Springfield at 9.00 a.m., arriving Montreal 11.05 p.m., with Pullman Buffet Parlor Cars to Montreal *without damage*. Night Expresses leave Boston, via Lowell, at 7.00 p.m., via Fitchburg 6 p.m., and New York at 4.30 p.m., via Springfield, arriving in Montreal at 8.25 a.m. For Tickets and Freight Rates, apply at Central Vermont Railroad Office, 136 St. James Street.

A. C. STONEGRAVE,
Canadian Passenger Agent.

S. W. CUMMINGS,
Gen'l. Passenger Agent.

J. W. HOBART,
Gen'l. Manager

GRAND TRUNK RAILWAY.

NO CHANGE VIA THIS ROUTE

—BETWEEN—

BOSTON, MONTREAL AND CHICAGO.

THE ONLY LINE RUNNING

Pullman Palace Drawing Room

—AND—

SLEEPING CARS

THROUGH to CHICAGO

—BY THE—

CHICAGO AND GRAND TRUNK

RAILWAY.

WITHOUT CHANGE.

The Intercolonial Railway

IN CONNECTION WITH THE

GRAND TRUNK RAILWAY

—FOR—

**Halifax, St. John and all points in the
Maritime Provinces.**

**CONDENCED THROUGH TABLE—GOING WEST—
GRAND TRUNK RAILWAY, MAIN LINE—
BOSTON, PORTLAND TO MONTREAL.**

Boston, via B. & M. or Eastern Railways leave at 9 a.m.; Portland, leave at 1 30 p.m.; Danville Junction, at 2.40 p.m.; Lewiston Junction, at 2.46 p.m.; South Paris, leave at 3.40 p.m.; Norway, arrive at 3.45 p.m.; Norway, leave at 3.27 p.m.; South Paris, arrive at 3.32 p.m.; Gorham, arrive at 5.35 p.m., leave at 5.55 p.m.; Island Pond, arrive at 8.20 p.m., leave at 9.15 p.m.; Sherbrooke, at 11.45 p.m.; Richmond, arrive at 12.30 a.m., leave at 2.00 p.m.; Montreal, arrive at 6.05 a.m.

GOING EAST.—Montreal, leave 10.00 p.m.; Richmond, arrive 1.30 a.m., leave 2.30 a.m.; Island Pond, arrive 5.30 a.m., leave 6.46 a.m.; Gorham, arrive 8.55 a.m., leave 9.20 a.m.; South Paris, leave 10.00 a.m.; Norway, arrive 10.05 a.m., leave 10.40 a.m.; South Paris, arrive 10.45 a.m.; Danville, Jc., arrive 11.35 a.m., leave 11.35 a.m.; Bangor, Me., arrive 6.50 p.m.; St. John, N.B., arrive 6.30 a.m.; Portland, arrive 13.35 a.m.; Boston, B & M., arrive 5.10 a.m.; Dominion Steamship Co., makes direct connection at Portland for Liverpool.

SOUTH-EASTERN RAILWAY.

Boston, Lowell, Nashua, &c.—9.00 a.m. and 5.10 p.m. Portland, via White Mountains—9 a.m. Newport, Waterloo, Bedford, Springfield and all points on Connecticut River Line—5.10 p.m. **ARRIVE**—From Boston, Lowell, Nashua, &c.—9.15 a.m. and 8.30 p.m. From Portland—8.30 p.m. From Springfield and Conn. River Points—9.15 a.m. From Newport, Waterloo and Local Points, 9.15 a.m.

DELAWARE AND HUDSON RIVER.

GOING SOUTH—Albany, Troy, Rouse's Point, 9.45 a.m.; for New York and Rouse's Point, 6.10 p.m.; arriving from Albany, Troy and Rouse's Point, 6.35 p.m.; from New York, 8.25 a.m.

GRAND TRUNK GOING EAST — CONDENCED
THROUGH TABLES—CHICAGO, TORONTO
AND MONTREAL.

Chicago, leave 3.21 p.m., 9.20 p.m.; Detroit, 8.00 a.m.; Sarnia, Pt. Edw'd., 3.10 a.m., 12.40 p.m.; London, 6.30 a.m., 1.55 p.m.; Stratford, arrive 5.30 a.m., 3.35 p.m.; leave 5.35 a.m., 3.45 p.m.; Guelph, 6.40 a.m., 5.15 p.m.; Toronto, arrive 8.10 a.m., 7.05 p.m.; leave 9.00 a.m., 7.50 p.m.; Oshawa, 10.20 a.m., 9.10 p.m.; Coburg, arrive 11.25 a.m., 10.30 p.m.; leave 11.30 a.m., 10.40 p.m.; Belleville, arrive 12.45 p.m., 12.01 a.m.; leave 12.50 p.m., 12.10 a.m.; Kingston, arrive 2.20 p.m., 1.40 a.m.; leave 2.25 p.m., 1.50 a.m.; Ottawa, via C. P., arrive 6.30 p.m., 7.00 a.m.; leave 6.30 p.m., 7.00 a.m.; Brockville, arrive 4.00 p.m., 3.25 a.m.; leave 4.05 p.m., 3.35 a.m.; Prescott, arrive 4.30 p.m., 4.05 a.m.; leave 4.35 p.m., 4.10 a.m.; Cornwall, 5.50 p.m., 5.35 a.m.; leave 5.55 p.m., 5.45 a.m.; Ottawa, C. A.; Montreal, arrived 8.00 p.m., 8.00 a.m.

GRAND TRUNK GOING WEST — CONDENCED
THROUGH TABLES—MONTREAL, TORONTO
AND CHICAGO.

Montreal leave 9.00 a.m., 11.30 p.m.; Lachine Junction, 9.05 a.m., 11.35 p.m.; Ottawa, [via] C. A.; Cornwall, arrived 11.30 a.m., 1.55 p.m.; leave 11.40 a.m., 2.00 p.m.; Prescott, arrive 1.15 p.m., 2.00 a.m.; leave 1.20 p.m.; Brockville, arrive 1.50 p.m., 4.00 a.m.; leave 2.05 p.m., 4.05 a.m.; Ottawa, via C. P., leave 10.45 a.m.; Kingston, arrive 3.55 p.m., 5.45 a.m.; leave 5.05 p.m., 5.50 a.m.; Belleville, arrive 5.40 p.m., 7.30 a.m.; leave 5.50 p.m., 7.35 a.m.; Coburg, arrive 7.20 p.m., 9.00 a.m.; leave 7.35 p.m., 9.15 a.m.; Toronto, arrive 10.30 p.m., 11.30 a.m.; leave 12.15 p.m.; [via G. W. Div. G. T. Ry. to Chicago.]; Hamilton, leave 12.30 a.m.; London, leave 3.35 a.m.; Detroit, 6.20 a.m.; Guelph, 2.10 p.m.; Stratford, arrive 3.45 p.m.; leave 3.55 p.m.; London, arrive 5.15 p.m.; Sarnia, Pt. Edw'd., 6.40 p.m.; Detroit, 9.25 p.m.; Chicago, arrive 7.45 p.m., 8.10 a.m.; G. T. R.

CONDENCED THROUGH TABLE INTERCOLONIAL RAILWAY OF CANADA.

GOING WEST.—Halifax, d., 2.15 p.m.; Windsor Junction, 2.48; Truro, a. d., 4.45, 5.05; Amherst, a. d., 8.15, 8.35; Moncton, a., 10.30; St. John, d., 7.15; Moncton, a., 10.40; Moncton, d., 11.00; Chatham Junction, 2.00 a.m.; Campb'lton, a. d., 6.30, 6.50; Ste. Flavie, a. d., 10.30, 10.50; Trois Pistoles, a. d., 1.10. 1.30 p.m.; Riv. du Loup, a. d., 2.30, 2.40; Chaud're Curve, a. d., 6.55, 7.00; Pointe Levis, a., 7.20; Quebec, a., by ferry; Pte. Levis, G. T. R., d., 8.00 p.m.; Montreal, G. T. R., a., 6.05 a.m.; Ottawa, Can. At. R., a 12.20 p.m.; Ottawa, Can. Pac. R., a 12.20; Torodto, G. T. R., a 10.30.

GOING EAST.—Toronto, G. T. R., d 9.00 a.m.; Ottawa, C. P. R., 4.30 p.m.; Ottawa, Can. At., 4.50; Montreal, G. T. R., 10.00; Quebea, d by ferry; Pointe Levis-7.30 a.m.; Chaudiere Curve, a d, 7.50, 7.55; Riv. du Loup, a d, 12.05, 12.15 p.m.; Trois Pistoles, a d, 1.15, 1.35; Ste. Flavie, a d, 3.40, 3.50; Campb'lton, a d, 7.50, 8.10; Chatham Junction, 12.40 a.m.; Moncton, a, 3.40; Moncton d, 4.00; St. John, a, 7.00; Moncton, d, 4.00; Amherst, a d, 5.55, 6.10; Truro, a d, 9.18, 9.37; Windsor Junction, 11.36; Halifax, a, 13.10 p.m.

PLACES OF AMUSEMENT.

Academy of Music, Victoria street, next Queen's Block
St. Catherine st.

Theatre Royal, Cote street, near Craig st.

SKATING RINKS.

Victoria Skating Rink, Drummond street, behind Windsor Hotel.

Crystal Palace Skating Rink, Dominion Square, Metcalfe Street.

Champ de Mars Skating Rink, Champ de Mars, Craig Street.

LACROSSE CLUBS.

The Shamrock, J. McShane, M. P. President; F. E. McKenna, Secretary. The Monereal, A. W. Stevenson, Pres.; T. L. Paton, Hon. Secretary. The Independent, John Lewis, President; W. Scullion, Secretary.

ATHLETIC CLUBS.—CURLING.

Royal Caledonian Curling Club.—Club Room at Thistle Club Room, St. Monique st., off Dorchester, near the Ice Palace.

Montreal Thistle Curling Club.—Same as above—St. Monique st.

Montreal Curling Club.—Club House, 1079 St. Catherine st.

Montreal Caledonian Curling Club.—Rink, corner of Mountain and St. Catherine sts.

SNOW-SHOE CLUBS.

Montreal Snow-shoe Club.—Club Rooms—The Gymnasium, corner of Mansfield and Burnside sts. St. George's Snow-shoe Club. Tuque Bleu Snow-shoe Club. Le Canadian Snow-shoe Club, I. A. Beauvais, President; C. O. Lapierre, Secretary.

PLACES OF INTEREST
IN OR ABOUT MONTREAL.

City Hall,
New Post Office,
New Court House,
French Cathedral,
Bank of Montreal.
Bank British North America,
The Merchants Bank,
Molsons Bank,
Viger Square.

The Drive around the Mountain and to Mountain Park, from which point can be obtained one of the finest views on the continent of America.

McGill College,
English Cathedral,
Church of Notre Dame de Lourdes,
Jesuit Church,
Grey Nunnery.
-Victoria Bridge,
The Drive to Back River,
The Drive to Lachine,
Hochelaga Convent.

J. & T. BELL,

MANUFACTURERS OF

FINE BOOTS AND SHOES,

WHOLESALE,

MONTREAL.

RETAIL DEPARTMENT,

273 Notre Dame Street.

Stock Expressly Selected for Carnival Week.

OUR SPECIALTIES ARE

LADIES' DRESS SHOES,

BLACK SATIN SLIPPERS,

WHITE JEAN SLIPPERS,

FRENCH KID SLIPPERS,

Gentlemen's Dancing Pumps in French Kid,
Patent Leather, &c.

MOCCASINS AND FELT OVER BOOTS,

RAILWAY TIME TABLES.

BONAVENTURE STATION.

GRAND TRUNK RAILWAY.

GOING WEST—Passenger train for Toronto, 9.00 a.m. Express for all points West, 9.00 p.m. every day (Sundays included). Express for Chicago, 11.30 p.m. (except Sunday). Mixed to Brockville, 12.30 p.m. For Cornwall, 5 p.m. Ottawa via Coteau, 8.45 a.m., 4.30 p.m. **ARRIVE FROM THE WEST**—Express, 8.00 a.m. Passenger from Toronto, 7 & 9 p.m. Mixed, 6.30 p.m. Cornwall, 8.45 a.m. Ottawa via Coteau, 11.35 a.m., 8.20 p.m.

GOING EAST—Island Pond, 3.15 p.m. Mixed to Quebec, Richmond and Island Pond, 7 a.m. Quebec, Mixed, 7.30 p.m. on Sundays only. Express, 10.00 p.m. Portland, 10.00 p.m. Mixed for St. Hyacinthe, 5.10 p.m. Huntingdon and Fort Covington, 4 p.m. Hemmingford at 4.00 p.m. Sorel, 8.00, 5.10 p.m. **ARRIVE**—From Quebec and Portland, 7.05 a.m. Island Pond, 12.03 a.m., 6.00 p.m. Mixed from Quebec, Richmond, 9.40 p.m. From Sorel, 10.04 a.m. and 5.35 p.m. From Huntingdon and Fort Covington, 9.15 a.m. **FOR LACHINE**—7.00, 7.55, 9.00 a.m.; 12 noon, 3.30, 4.00, 6.15 p.m. Saturdays only 2.00 p.m., St. Lambert, St. Henri and Point St. Charles, 5.45, 5.50 and 9.00 a.m. 12.10, 4, 6.50 and 7.30 p.m. Saturdays only 2.00 p.m. Leave Lachine, 7.25, 8.20, 9.35 a.m., 1.90, 4.00, 5.30 7.00 p.m., Saturdays only 2.30 p.m. Leave St. Lamberts, Point St. Charles and St. Henri, 6.15, 7.35, 8.50, 9.45 a.m., 1, 6.55 and 8.00 p.m., Saturdays only 2.45

CENTRAL VERMONT RAILWAY.

GOING SOUTH AND WEST—St. Johns and St. Albans, 9.30 a.m., 4.45 p.m., 8.30 p.m., Boston, 8.30 a.m., 9.30 p.m., New York via St. Albans and Troy, 4.45 p.m., New York and White River Junction and Springfield, 8.30 a.m. and 8.30 p.m. Waterloo and Magog, 4.45 p.m. **ARRIVE**—From Boston, 8.25 a.m., 9.30 and 11.05 p.m. New York via Springfield, 8.25 a.m. New York via Troy and St. Albans, 8.25 a.m.

TOBOGGANING CLUBS.

The Lansdowne, Slide on Fletcher's Field, Pres., Alderman J. C. Wilson; Secretary, Mr. John Corristine. The Tuque Bleu. The Park.

THE DON
BREWING AND MALTING
COMPANY.

BREWERS OF
STOCK ALES
AND
PORTER,

—AND—

THE CELEBRATED PIONEER LAGER.

Thos. Davies & Co.,

TORONTO.

THE DON

RECEIVING AND PAYING

OF THE

RENTS

AND

EXPENSES

OF THE

LANDS

OF THE

100-1000

THE
MOUNTAIN

VIEW

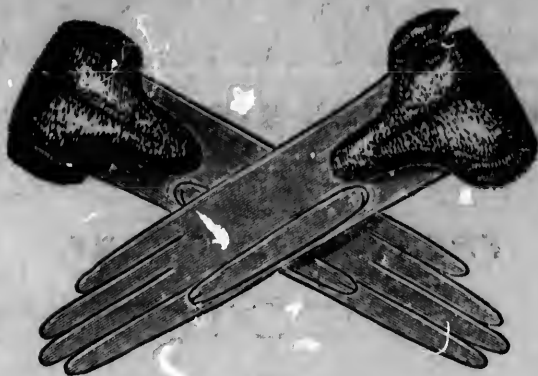
OF THE

STATE OF

MISSISSIPPI

1850





JAS. HALL & Co.

BROCKVILLE, ONT.

MANUFACTURERS OF

GLOVES & MITTS

AND DEALERS IN

Indian Moccasins.

FINE CALF and BUCK GOODS a Specialty.

J. MACDONALD & CO.

WELLINGTON STREET EAST,

—AND—

FRONT STREET EAST,

TORONTO.

DIRECT IMPORTERS OF

Staples and Fancy Dry Goods, Carpets,

&c. &c.

Merchants visiting Toronto will find one of the largest and most varied Stocks in

FANCY DRESS GOODS,

BLACK AND COLORED SILKS,

BLACK AND COLORED CASHMERES,

SCOTCH AND ENGLISH TWEEDS,

BROAD CLOTHS.

Etc., Etc.

Letter orders promptly filled. Samples and Price Lists mailed on application as above.

J. MACDONALD & CO.

