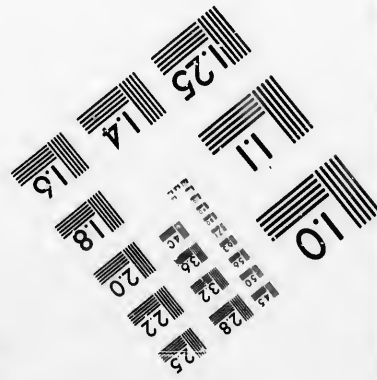
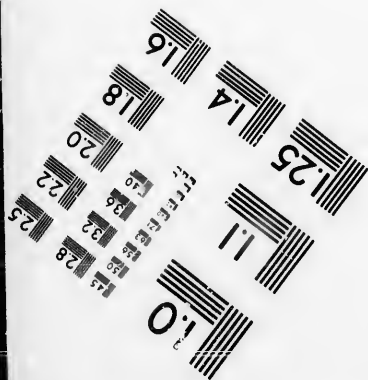
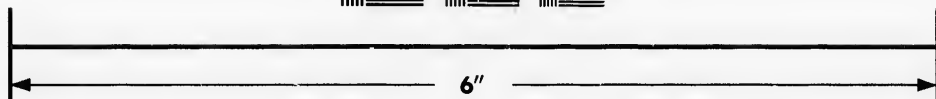
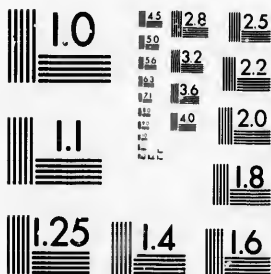


**IMAGE EVALUATION
TEST TARGET (MT-3)**



**Photographic
Sciences
Corporation**

23 WEST MAIN STREET
WEBSTER, N.Y. 14580
(716) 872-4503

15 28
18 25
22 20
25 18

**CIHM/ICMH
Microfiche
Series.**

**CIHM/ICMH
Collection de
microfiches.**



Canadian Institute for Historical Microreproductions / Institut canadien de microreproductions historiques

11
10
14

© 1986

Technical and Bibliographic Notes/Notes techniques et bibliographiques

The Institute has attempted to obtain the best original copy available for filming. Features of this copy which may be bibliographically unique, which may alter any of the images in the reproduction, or which may significantly change the usual method of filming, are checked below.

L'institut a microfilmé le meilleur exemplaire qu'il lui a été possible de se procurer. Les détails de cet exemplaire qui sont peut-être uniques du point de vue bibliographique, qui peuvent modifier une image reproduite, ou qui peuvent exiger une modification dans la méthode normale de filmage sont indiqués ci-dessous.

- Coloured covers/
Couverture de couleur
- Covers damaged/
Couverture endommagée
- Covers restored and/or laminated/
Couverture restaurée et/ou pelliculée
- Cover title missing/
Le titre de couverture manque
- Coloured maps/
Cartes géographiques en couleur
- Coloured ink (i.e. other than blue or black)/
Encre de couleur (i.e. autre que bleue ou noire)
- Coloured plates and/or illustrations/
Planches et/ou illustrations en couleur
- Bound with other material/
Relié avec d'autres documents
- Tight binding may cause shadows or distortion
along interior margin/
La reliure serrée peut causer de l'ombre ou de la
distorsion le long de la marge intérieure
- Blank leaves added during restoration may
appear within the text. Whenever possible, these
have been omitted from filming/
Il se peut que certaines pages blanches ajoutées
lors d'une restauration apparaissent dans le texte,
mais, lorsque cela était possible, ces pages n'ont
pas été filmées.
- Additional comments:/
Commentaires supplémentaires:

- Coloured pages/
Pages de couleur
- Pages damaged/
Pages endommagées
- Pages restored and/or laminated/
Pages restaurées et/ou pelliculées
- Pages discoloured, stained or foxed/
Pages décolorées, tachetées ou piquées
- Pages detached/
Pages détachées
- Showthrough/
Transparence
- Quality of print varies/
Qualité inégale de l'impression
- Includes supplementary material/
Comprend du matériel supplémentaire
- Only edition available/
Seule édition disponible
- Pages wholly or partially obscured by errata
slips, tissues, etc., have been refilmed to
ensure the best possible image/
Les pages totalement ou partiellement
obscurcies par un feuillet d'errata, une pelure,
etc., ont été filmées à nouveau de façon à
obtenir la meilleure image possible.

This item is filmed at the reduction ratio checked below/
Ce document est filmé au taux de réduction indiqué ci-dessous.

10X	12X	14X	16X	18X	20X	22X	24X	26X	28X	30X	32X
						✓					

The copy filmed here has been reproduced thanks to the generosity of:

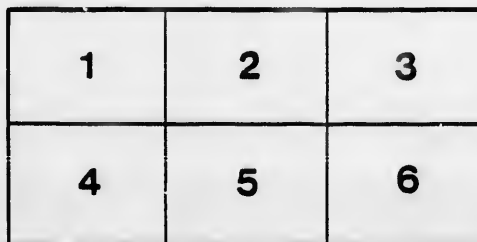
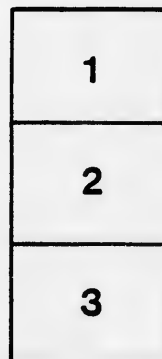
Archives of Ontario
Toronto

The images appearing here are the best quality possible considering the condition and legibility of the original copy and in keeping with the filming contract specifications.

Original copies in printed paper covers are filmed beginning with the front cover and ending on the last page with a printed or illustrated impression, or the back cover when appropriate. All other original copies are filmed beginning on the first page with a printed or illustrated impression, and ending on the last page with a printed or illustrated impression.

The last recorded frame on each microfiche shall contain the symbol \rightarrow (meaning "CONTINUED"), or the symbol ∇ (meaning "END"), whichever applies.

Maps, plates, charts, etc., may be filmed at different reduction ratios. Those too large to be entirely included in one exposure are filmed beginning in the upper left hand corner, left to right and top to bottom, as many frames as required. The following diagrams illustrate the method:



L'exemplaire filmé fut reproduit grâce à la générosité de:

Archives of Ontario
Toronto

Les images suivantes ont été reproduites avec le plus grand soin, compte tenu de la condition et de la netteté de l'exemplaire filmé, et en conformité avec les conditions du contrat de filmage.

Les exemplaires originaux dont la couverture en papier est imprimée sont filmés en commençant par le premier plat et en terminant soit par la dernière page qui comporte une empreinte d'impression ou d'illustration, soit par le second plat, selon le cas. Tous les autres exemplaires originaux sont filmés en commençant par la première page qui comporte une empreinte d'impression ou d'illustration et en terminant par la dernière page qui comporte une telle empreinte.

Un des symboles suivants apparaîtra sur la dernière image de chaque microfiche, selon le cas: le symbole \rightarrow signifie "A SUIVRE", le symbole ∇ signifie "FIN".

Les cartes, planches, tableaux, etc., peuvent être filmés à des taux de réduction différents. Lorsque le document est trop grand pour être reproduit en un seul cliché, il est filmé à partir de l'angle supérieur gauche, de gauche à droite, et de haut en bas, en prenant le nombre d'images nécessaire. Les diagrammes suivants illustrent la méthode.

rrata
to

peiture.
n à



32X

List of Voters



Of the.....

Municipality of the

Township * of *

*** * Pickering,**

For the year 1897.

D. R. Beaton, :- Clerk.

PICKERING :

Printed by W. J. Clark, at the "News" office.



...

Tom

Donald E

PRINT



✦ * LIST * OF * VOTERS * ✦

— { OF THE } —

.... MUNICIPALITY

— { OF THE } —

Township * of * Pickering

— { FOR THE YEAR } —

.... 1897.

Donald R. Beaton, - - Township Clerk.

PICKERING :

PRINTED BY W. J. CLARK, AT THE OFFICE OF THE PICKERING NEWS.

1897.



use
the
sted
eal
the
pies

500127

VOTERS' LIST 1897

Instructions to those to whom these Lists are sent.

SECTION 6—"The Sheriff shall, immediately upon receipt of his copies, cause one of them to be posted up in a conspicuous place in the Court House ; the Clerk of the Peace, upon receipt of his copies shall cause one of them to be posted up in a conspicuous place in his office ; every Public and Separate School Head Master or Mistress shall in a like manner post up one of his or her copies or the door of the School House, and every Postmaster shall post up one of his copies in the Post Office."—Chapter 9, R. S. O.

Schedule of Post Office.

1 Pickering	19 Glen Major
2 Dunbarton	20 Highland Creek
3 Rouge Hill	21 Locust Hill
4 Port Union	22 Mongolia
5 Audley	23 Stouffville
6 Brock Road	24 Scarboro
7 Cherrywood	25 Box Grove
8 Whitevale	26 Cedar Grove
9 Kinsale	27 Markham
10 Greenwood	28 Godwood
11 Brougham	29 Toronto
12 Green River	30 Oshawa
13 Atha	31 Port Perry
14 Altona	32 Myrtle
15 Claremont	33 Uxbridge
16 Balsam	34 Woburn
17 Whitby	35 Unionville
18 Brooklin	

Voters' List for 1897.

—: Municipality of the —:

Township of Pickering,

Polling Sub-Division No. 1.

Comprising all the Lots from No. 1 to No. 10 inclusive, from the Lake to the Fourth Concession Line.

PART I.—List of persons entitled to vote at both Municipal Elections and Elections to the Legislative Assembly.

NO. ON ROLL.	NAME.	JUROR.	OCCUPATION	LOT	CON	QUALIFICATION.	5 2
17	Austin, Sylvanus		farmer	2	1	f	m f 17
82	Allman, John		laborer	2	2	t	m f 17
68	Brown, Milton W	j	farmer	3	1	f	m f 17
66	Balsdon, Edwin	j	farmer	10	b f	t	m f 1
70	Balmer, William	j	farmer	2	2	t	m f 17
85	Bradley, Robert J	j	farmer	2	1	t	m f 17
87	Bradford, Charles	j	farmer	10	2	t	m f 1
88	Bradford, George	j	farmer	10	2	t	m f 1
90	Brown, Wing R	j	farmer	6	1	t	m f 1
94	Brown, Warren L	j	farmer	7	1	t	m f 1
100	Branton, John		laborer	6	2	t	m f 17
103	Bath, John		farmer	1	1	f	m f 17
111	Blake, Henry	j	farmer	7	3	t	m f 5
121	Boyes, William		mason	2	3	f	m f 5
122	Bryan, Edward	j	farmer	9	3	t	m f 1
127	Brown, Thomas W		farmer	9	3	f	m f 1
129	Bye, Joseph	j	farmer	6	3	t	m f 5
130	Bye, Russell	j	farmer	6	3	t	m f 5
137	Boone, Llewellyn	j	farmer	10	2	f	m f 1

POLLING SUB DIVISION NO. 1.

5

NO. ON ROLL.	NAME.	JUROR.	OCCUPATION	LOT	CON	QUALIFICATION.	5
281	Brown, N J		farmer	6	1	f	m f 1
265	Carruthers, D W	j	farmer	5	1	f	m f 17
280	Coombe, William	j	farmer	6	1	t	m f 17
296	Cronk, Stephen		farmer	10	2	f	m f 1
297	Cronk, Robert H	j	farmer	10	3	f	m f 1
298	Cornell, Edward	j	farmer	9	2	f	m f 1
299	Cornell, James	j	farmer	9	2	f	m f 1
308	Cornell, Gervas	j	farmer	8	2	f	m f 1
309	Cornell, William V	j	farmer	8	2	f	m f 1
310	Cornell, Walter	j	farmer	8	2	f	m f 1
328	Chapman, N J	j	farmer	9	3	f	m f 5
329	Chapman, Frank M	i	farmer	9	3	t	m f 5
380	Chapman, Ernest L	j	farmer	9	3	t	m f 5
343	Crawford, T E	j	farmer	8	3	t	m f 10
696	Clark, Smith		farmer	10	3	f	m f 1
86	Carter, John		gentleman	2	1	f	m f 17
402	Davey, W J	j	farmer	1	2	f	m f 17
403	Davey, Thomas N	j	farmer	1	2	f	m f 17
404	Davey, Byron	j	farmer	1	2	f	m f 17
405	Davey, Frederick	j	farmer	1	2	f	m f 17
500	Forrester, Philip		laborer	2	b f	t	m f 17
506	Fowlie, Benjamin		laborer	9	1	t	m f 1
540	Grayer, John	j	farmer	3	b f	t	m f 17
548	Gorman, Patrick	j	farmer	9	b f	t	m f 1
567	Gormley, John		laborer	4	1	t	m f 17
600	Gulliver, John H		laborer	7	2	t	m f 1
679	Hall, David	j	farmer	4	b f	t	m f 17
683	Hobbs, William		farmer	8	1	f	m f 1
684	Hobbs, Fred W	j	farmer	8	1	f s	m f 1
693	Hill, Louis		laborer	3	2	t	m f 5
695	Harris, William	j	farmer	10	3	t	m f 1
699	Hartrick, Benjamin		farmer	8	1	f	m f 1
700	Hartrick, Geo B	j	farmer	8	1	f	m f 1

(g,*

the Lake

and Elec.

ATION.

m f 17

m f 17

m f 17

m f 1

m f 17

m f 17

m f 1

m f 1

m f 1

m f 1

m f 17

m f 17

m f 5

m f 5

m f 1

m f 1

m f 5

m f 5

m f 1

POLLING SUB DIVISION NO 1.

NO. ON ROLL	NAME.	JUROR	OCCUPATION	LOT	CON	QUALIFICATION	P. O.	
705	Heard, Moses		farmer	8	2	t	m f	1
706	Heard, Moses jr	j	farmer	8	2	t	m f	1
710	Hancock, Thomas		agent	10	1	t	m f	1
724	Howland, Robert	j	farmer	2	b f	t	m f	1
730	Huntley, Geo A	j	farmer	3	3	t	m f	5
821	Irving, Simon		farmer	2	3	f	m f	5
841	Johnston, Robert E	j	farmer	6	2	t	m f	1
882	Kemp, William	j	farmer	1	b f	t	m f	17
890	Kennedy, James	j	farmer	7	b f	t	m f	1
891	Kennedy, George	j	farmer	7	b f	t	m f	1
893	Kennedy, Michael	j	farmer	5	b f	t	m f	1
981	Lee, Whitfield		farmer	1	1	f	m f	17
955	Linton, Samuel	j	farmer	9	2	f	m f	1
1024	McCausland, William		farmer	7	b t	t	m f	1
1025	McCausland, William jr	j	farmer	7	b f	t	m f	1
1026	McCausland, Lundy	j	farmer	7	b f	t	m f	1
1028	Morcombe, William	j	farmer	9	b f	t	m f	1
1081	McGuire, John	j	farmer	5	2	t	m f	1
1082	McGuire, Michael	j	farmer	5	2	t	m f	1
1083	McGuire, Richard	j	farmer	5	2	t	m f	1
1085	McBrady, Daniel		gentleman	3	3	f	m f	5
1092	Mercer, Walter		laborer	8	3	t	m f	1
1094	McBrady, James	j	farmer	4	3	f	m f	5
1806	Madill, Wm B		farmer	3	3	f	m f	5
1235	Neal, Thomas		farmer	2	2	t	m f	17
1236	Neal, George	j	farmer	2	2	t	m f	17
1237	Neal, Charles	j	farmer	2	2	t	m f	17
1262	Oryis, Ira	j	farmer	5	1	f	m f	17
1263	Orvis, Spencer	j	farmer	5	1	f	m f	17
1270	O'Connor, George	j	farmer	1	3	f	m f	17
1277	Osborne, Thomas C	j	farmer	2	3	t	m f	5
1278	Osborne, Cephas H	j	farmer	2	3	f s	m f	5
1289	Philip, Richard T		farmer	4	1	f	m f	17

Voters' List for 1897.

—: Municipality of the —:

Township of Pickering,

Polling Sub-Division No. 1.

Comprising all the Lots from No. 1 to No. 10 inclusive, from the Lake to the Fourth Concession Line.

PART II—List of persons entitled to vote at Municipal Elections only.

NO. ON ROLL.	NAME.	JUROR.	OCCUPATION	LOT.	CON	QUALIFICATION.	50 2.
64	Brown, Mrs E		widow	8	1	f	17
65	Brown, Frank			8	1	f	1
91	Brown, Mrs S		widow	6	1	f	1
118	Boone, Annie W		spinster	10	2	f	1
126	Byron, Mrs Jane		widow	8	3	f	1
138	Bell, John		farmer	7	3	f	5
134	Bell, John jr		farmer	7	3	f	5
138	Bell, Albert		farmer	7	3	f	5
135	Bell, William		farmer	7	3	f	5
1084	Brown, Sherman			5	2	f	17
248	Cowan, Wm jr		farmer	10	1	f	2
264	Carruthers, Mrs R		widow	4	1	f	17
332	Collins, Mrs		widow	2	3	f	2
344	Crawford, W F			8	3	f	33
680	Collins, Mrs R		widow	4	b f	f	1
892	Campbell, James			7	b f	f	17
1348	Cummings, Mrs			3	3	f	
463	Elliott, Francis		farmer	10	8	t	5
464	Elliott, Thomas		farmer	10	3	f	5

POLLING SUB DIVISION NO. 1.

NO. ON ROLL.	NAME.	JUROR.	OCCUPATION	LOT	CON	QUALIFICATION.	P. O.
802	Fothergill, John J		farmer	10	1	f	17
89	Field, Thomas		farmer	10	2	f	1
1029	Foster, Mr			9	1	f	
626	Guthrie, Richard		farmer	1	3	f	5
627	Guthrie, Wm H		farmer	1	3	f	5
1581	Gold, W S			6	b f	f	17
842	Johnston, Arthur		farmer	6	2	f	10
549	Logan, Robert			9	b f	f	
1385	Madill, Mrs		widow	5	3	f	
1027	McCausland, Mary		spinster	5	b f	f	1
1040	McKay, Miss		spinster	6	2	f	
1080	McGuire, Mrs		widow	5	2	t	1
1509	Margach, Alex		smith	8	b f	f	1
1086	McBrady, Francis J			3	3	f	5
1322	Post, A A			4	2	f	
1334	Puckrin, Isaac		farmer	5	3	f	5
1845	Puckrin, John		farmer	3	3	f	5
1846	Puckrin, Simon		farmer	3	3	f	5
1847	Puckrin, William		farmer	3	3	f	5
67	Richardson, Jas T			10	b f	f	
68	Richardson, W V		notary	10	b t	f	1
547	Richardson, Mrs J		widow	3	b f	f	17
725	Richardson, A W			2	b f	f	17
1745	Ross, Hugh			2	1	f	17
1746	Ross, George			2	2	f	17
1445	Richardson, A M			2	1	f	17
1682	Richardson, Mrs E A		widow	1	1	f	17
123	Thompson, Mrs J		widow	9	3	t	17
124	Thompson, Janet		spinster	9	3	f	17
125	Thompson, Christina		spinster	9	3	f	17
707	Taylor, H B			8	2	f	17
708	Taylor, Charles			8	2	f	17
1681	Taylor, Richard		farmer	1	1	t	17

ng,*

the Lake

s only.

ICATION.

P. O.
17
1
1
1
5
5
5
17
2
17
2
33
1
17
5
5

POLLING SUB DIVISION NO 1.

NO. ON ROLL	NAME.	JUROR	OCCUPATION	LOT	CON	QUALIFICATION.	P. O.
97	Vail, Mrs M		widow	7	1	f	1
98	Vail, Phoebe		spinster	7	1	f	1
99	Vail, Maria		spinster	7	1	f	1
101	Vickers, Mrs H		widow	6	2	f	17
71	Woodruff, V B			2	2	f	17
112	Whiteman, Dr			7	3	f	
181	Whitfield, T B			6	3	f	17
132	Whitfield, T G			6	3	f	17
1764	Wetherald, Mrs J		widow	10	1	f	1

Voters' List for 1897.

—: Municipality of the —:

Township of Pickering,

Polling Sub-Division No. 1.

Comprising all the Lots from No. 1 to No. 10 inclusive, from the Lake to the Fourth Concession Line.

PART III.—List of Persons entitled to vote at Elections to the LEGISLATIVE ASSEMBLY only.

NO. ON ROLL.	NAME.	JUROR.	OCCUPATION	LOT.	CON	QUALIFICATION.	6 2.
92	Brown, David B		laborer	6	1	m f	1
93	Brown, Gilbert B		laborer	6	1	m f	1
102	Brown, Richard		laborer	6	1	m f	1
269	Cormack, George		laborer	10	1	m f	1
475	Edwards, Isaac		laborer	2	2	m f	17
584	Gorman, Jeremiah		laborer	9	b f	m f	1
976	Harlock, Joseph		laborer	10	b f	m f	1
712	Hancock, Herbert		laborer	10	1	m f	1
713	Hancock, Wm E		laborer	10	1	m f	1
690	Hubbard, Aaron		laborer	3	b f	m f	17
825	Ireland, Robert		laborer	1	b f	m f	17
943	Lee, John H		laborer	4	b f	m f	1
1046	McPherson, Herbert		laborer	6	1	m f	17
1323	Powell, Woodruff		laborer	5	1	m f	1
1535	Spy, Henry		laborer	1	b f	m f	17
1544	Smith, Arthur		laborer	1	b f	m f	17
1778	Woodward, Enos		laborer	3	b f	m f	17
1795	Woodward, William		laborer	2	3	m f	17
1799	Walters, John		laborer	2	3	m f	5

Voters' List for 1897.

—: Municipality of the —:

Township of Pickering,

Polling Sub-Division No. 2.

Comprising all the Lots from No. 11 to No. 14 inclusive, from the Lake to the Fourth Concession Line.

PART I.—List of persons entitled to vote at both Municipal Elections and Elections to the Legislative Assembly.

NO. ON ROLL.	NAME.	JUROR.	OCCUPATION	LOT	CON	QUALIFICATION.	P. O.
22	Annan, Robert		farmer	12	2	f m f	1
28	Annan, David jr	j	farmer	12	2	f m f	1
24	Annan, Theodore	j	farmer	12	2	f m f	1
1910	Annan, David	j	farmer	14	1	f m f	1
1924	Anderson, E A		clergyman	14	2	t m f	1
104	Boyes, John	j	farmer	11	1	t m f	1
105	Boyes, Albert	j	farmer	11	1	f s m f	1
110	Brown, Franklin	j	farmer	12	2	f m f	1
114	Barrett, Richard	j	farmer	12	2	f m f	1
1911	Bunting, Brereton		gentleman	14	1	f m f	1
278	Cullis, William	j	farmer	12	1	t m f	1
274	Cullis, Richard		farmer	12	1	t m f	1
889	Calvert, Thomas	j	farmer	18	8	t m f	1
1960	Douglas, George		gentleman	14	1	f m f	1
1961	Douglas, Michael	j	farmer	14	1	f m f	1
1962	Douglas, Thomas		farmer	14	1	f m f	1
395	Dale, William J	j	farmer	18	1	f m f	1
410	Douglas, Andrew	j	farmer	14	1	t m f	1
416	Doyle, Joseph	j	farmer	12	8	f m f	1

POLLING SUB DIVISION NO. 2

13

NO. ON ROLL.	NAME.	JUROR.	OCCUPATION	LOT	CON	QUALIFICATION.	P. O.
417	Doyle, Frederick	j	farmer	12	3	f s	m f 1
1930	Dickie, William	j	laborer	14	1	f	m f 1
1932	Dinginan, Nelson		gentleman	14	1	f	m f 1
464	Elliott, Thos (see d 1)		farmer	11	3	f	m f 5
1941	Every, David F	j	farmer	14	2	t	m f 1
473	Elviss, W H		millor	14	1	t	m f 1
485	Field, Thomas (see d 1)	j	farmer	13	b f	f	m f 1
486	Field, Claude	j	farmer	13	b f	f	m f 1
487	Field, George	j	farmer	13	b f	f	m f 1
511	Forayth, Andrew	j	farmer	11	2	f	m f 1
1944	Field, John		gentleman	14	1	f	m f 1
572	Greenlaw, John	j	farmer	14	b f	t	m f 1
585	Gordon, Henry		farmer	13	1	f	m f 1
586	Gordon, George	j	farmer	13	1	t	m f 1
587	Gordon, Lafayette	j	farmer	13	1	f	m f 1
1948	Gordon, Robert	j	carpenter	14	2	f	m f 1
1949	Gordon, George A		carpenter	14	1	f	m f 1
677	Head, Thomas H		laborer	14	b f	t	m f 1
701	Ham, William		farmer	11	2	f	m f 1
719	Huggins, Alfred	j	farmer	14	3	f	m f 1
718	Haight, Henry A	j	farmer	13	3	f	m f 1
1971	Haney, William		laborer	14	1	f	m f 1
1978	Hartrick, Wm T		gentleman	14	1	f	m f 1
2036	Henderson, William		laborer	14	1	f	m f 1
830	Jones, George E	j	farmer	14	2	f	m f 1
1986	Kerr, George		banker	14	1	in	m f 1
921	Leaming, Thomas	j	farmer	12	b f	f	m f 1
922	Leaming, Philip		farmer	12	b f	f	m f 1
929	Larkin, John		farmer	13	b f	f	m f 1
930	Larkin, Henry	j	farmer	13	b f	f	m f 1
969	Lockwood, William	j	farmer	11	2	t	m f 1
1988	Ludgate, John		laborer	14	1	f	m f 1
1993	Lintol, John A	j	R R	14	1	f	m f 1

NO. ON ROLL	NAME	JUROR	OCCUPATION	LOT	CON	QUALIFICATION		P. O.
1065	Miller, Robt		farmer	13	1	f	m f	1
1067	Margach, Alex (see d 1)	j	smith	12	2	f	m f	1
1116	McDermaid, Peter		farmer	14	2	f	m f	1
1117	McDermaid, Donald	j	farmer	14	2	f	m f	1
1998	McQuay, James H	i	agent	14	1	f	m f	1
2003	McGinty, Edward		laborer	14	2	f	m f	1
2008	McAulay, Alexander		clergyman	14	1	t	m f	1
2030	McFarlane, D B	j	agent	14	1	t	m f	1
1435	Mutton, Oliver	j	farmer	11	2	t	m f	1
1267	O'Leary, Timothy	j	farmer	12	3	t	m f	1
1268	O'Leary, George	j	farmer	12	3	t	m f	1
2023	O'Connor, Jeremiah		laborer	14	1	t	m f	1
2025	O'Connor, Patrick		R R	14	1	t	m f	1
2064	O'Grady, Patrick	j	laborer	14	2	t	m f	1
2065	O'Grady, William		farmer	14	2	t	m f	1
1342	Parsons, Louis	j	farmer	13	2	t	m f	1
2029	Palmer, George M	j	farmer	14	1	f	m f	1
1434	Richards, James		farmer	11	1	f	m f	1
1417	Ridley, Arthur N	j	farmer	11	2	f	m f	1
1453	Remmer, Enos	j	farmer	13	3	t	m f	1
1454	Rowe, Philip J	j	farmer	11	3	f	m f	1
1455	Rowson, George	j	farmer	14	3	f	m f	1
1464	Richardson, Joshua N		gentleman	14	2	f	m f	1
2633	Richardson, W V (see 1)	j	notary	14	1	f	m f	1
2035	Rankin, John	j	laborer	14	1	f	m f	1
1528	Richardson, F J		gentleman	12	b f	f	m f	17
1510	Stork, Robert C	j	farmer	11	b f	t	m f	1
1526	Stephenson, John	j	farmer	12	b f	t	m f	1
1527	Stephenson, James A	j	farmer	12	b f	t	m f	1
1546	Shaughnessy, Michael	j	laborer	14	1	f	m f	1
2045	Seldon, George	j	R R	14	2	f	m f	1
2047	Stewart, Wm F		butcher	14	1	t	m f	1
2050	Somerville, James	j	manufac'er	14	1	t	m f	1

Voters' List for 1897.

—: Municipality of the —:

Township of Pickering,

Polling Sub Division No. 2.

Comprising all the Lots from No. 11 to No. 14 inclusive, from the Lake to the Fourth Concession Line.

PART II—List of persons entitled to vote at Municipal Elections only.

NO. ON ROLL.	NAME.	JUROR	OCCUPATION	LOT	CON	QUALIFICATION	P. O.
1909	Andrew, Mrs S		widow	14	1	f	1
187	Boone, L (see d 1)		farmer	18	3	f	i
170	Bray, Walter		farmer	11	3	t	5
1118	Boone, Edward			12	3	f	
1269	Boone, A W (see d 1)		spinster	12	3	f	1
266	Clark, William		farmer	14	1	f	1
267	Clark, Wm J		farmer	14	1	f s	1
268	Clark, Frederick		farmer	14	1	t s	1
1927	Collins, Mrs R (see d 1)		widow	14	2	f	1
2034	Cornell, Mary A		spinster	14	1	f	1
422	Doughty, Mrs M		widow	14	3	f	1
1926	Dale, S A		spinster	14	1	f	1
1099	Duggan, Mrs		widow	11	3	f	10
468	Elliott, Francis (see d 1)			11	3	t	
1511	Fothergill, J J (see d 1)			11	b f	f	17
593	Gee, John E		farmer	14	1	f	1
594	Gee, Frank		farmer	14	1	f	1
1950	Gordon, Wm D		carpenter	14	1	f	1
474	Gee, Mrs F R		widow	14	1	f	29

POLLING SUB-DIVISION NO. 2

17

NO. ON ROLL.	NAME.	JUROR.	OCCUPATION	LOT	CON	QUALIFICATION.	P.O.
687	Howland, Mrs		widow	14	1	f	1
1974	Howlett, Mrs		widow	14	1	f	1
1768	Hartrick, Benj (see d 1)		farmer	11	1	f	1
1976	Kinnelly, Mary		widow	14	1	f	1
1942	Logan, Christina		spinster	14	2	f	1
937	Leavens, Mrs D		widow	13	2	f	1
956	Linton, James		carpenter	11	1	f	1
957	Linton, Frank			11	1	f	17
970	Legan, William		merchant	11	2	f	1
1987	Latchford, Mary		widow	14	1	f	1
1994	Lidgett, Sarah		spinster	14	1	f	1
1995	Leng, Mrs George		widow	14	1	f	1
1343	Leng, J H			13	2	f	7
340	McGeogh, James			12	3	f	
1066	Milzar, Win J			13	1	f	
1098	McBrady, Robt		farmer	11	3	t	10
2000	Maver, Mrs		widow	14	1	f	1
2021	Mahler, Edward			14	1	f	
1232	Nowlan, Thomas		farmer	14	b f	f	8
1233	Nowlan, James		farmer	14	b f	f	8
1234	Nowlan, Robert		farmer	14	b f	f	8
2113	O'Leary, Margaret		spinster	14	1	f	1
2114	O'Leary, Julia		spinster	14	1	f	1
2117	O'Leary, Mrs L		widow	14	1	f	29
1306	Pollard, Richard		farmer	14	b f	t	1
1312	Powell, John (see d 1)		farmer	11	b f	f	1
1999	Peart, Mrs A		widow	14	1	f	29
106	Richards, Thomas			11	1	f	
1307	Roach, W			14	b f	f	
1442	Richards, Mrs John		widow	11	2	t	1
1772	Richardson, Mrs E		widow	11	b f	f	17
2048	Stewart, Mrs F		widow	14	1	f	1
172	Taylor, John			11	3	f	29

ing,*

m the Lake

ms only.

QUALIFICATION	P.O.
f	1
f	1
t	5
f	1
f	1
fs	1
ts	1
f	1
f	1
f	1
f	1
t	10
f	17
f	1
f	1
f	1
f	29

NO. ON ROLL	NAME.	JUROR	OCCUPATION	LOT	CGN	QUALIFICATION.	P. O.
1781	Waring, Mrs F		widow	14	2	f	1
1782	Wright, Mrs S		widow	13	2	f	1
1804	Westney, Stephen (see 1)		farmer	11	3	f	1
2057	Wonnacott, Mrs M		widow	14	1	f	
2058	Wonnacott, John S			14	1	f	

IFFICATION. P. O.
 f 1
 f 1
 f 1
 f
 f

Voters' List for 1897.

—: Municipality of the —:

Township of Pickering,

Polling Sub Division No. 2.

Comprising all the Lots from No. 11 to No. 14 inclusive, from the Lake to the Fourth Concession Line.

PART III.—List of Persons entitled to vote at Elections to the LEGISLATIVE ASSEMBLY only.

NO. ON ROLL.	NAME.	JUROR	OCCUPATION	LOT	CON	QUALIFICATION	P. O.
148	Badgerow, Seth		laborer	13	3	m f	6
283	Casey, Cornelius		laborer	14	1	m f	1
408	Dickie, Alexander		laborer	11	1	m f	1
496	Freeman, Frederick		millor	14	1	m f	1
514	Firth, Wm B		teacher	14	2	m f	1
1955	Gilders, George		laborer	14	1	m f	1
1977	Horn, John B		millor	14	1	m f	1
2375	Jackman, David		laborer	13	2	m f	1
935	Law, Alfred		laborer	12	1	m f	1
2376	Luton, James		laborer	13	2	m f	1
961	Lee, Peter		laborer	14	3	m f	1
1068	Margach, Frederick		laborer	12	2	m f	1
1992	Marritt, Isaac		laborer	14	1	m f	1
2007	Murkar, John		teacher	14	1	m f	1

Voters' List for 1897.

—: Municipality of the —:

Township of Pickering,

Polling Sub Division No. 3.

Comprising all the Lots from No. 15 to No. 18 inclusive, from the Lake to the Fourth Concession Line.

PART I.—List of persons entitled to vote at both Municipal Elections and Elections to the Legislative Assembly

NO. ON ROLL.	NAME.	JUROR	OCCUPATION	LOT	C N	QUALIFICATION	D
18	Allaway, William	j	cooper	16	2	t	m f 1
19	Allaway, Alfred		cooper	16	2	t	m f 1
25	Annan, John	j	farmer	17	1	f	m f 1
1908	Andrew, William	j	livery	15	2	f	m f 1
82	Brien, James	j	farmer	15	2	t	m f 1
115	Banks, William H	j	farmer	16	2	t	m f 1
117	Banks, Lorenzo	j	farmer	15	2	t	m f 1
119	Barker, Joseph S		millar	16	2	t	m f 1
161	Budgerow, Oliver	j	farmer	15	3	t	m f 1
1932	Bond, R A		postmaster	15	2	t	m f 1
1914	Buteaman, R M		physician	15	2	f	m f 1
1915	Burt, Richard		farmer	15	2	f	m f 1
1916	Bundy, J H	j	tinsmith	15	2	f	m f 1
1917	Burrell, John A	j	teamster	15	2	t	m f 1
266	Clark, William (see d 2)		farmer	15	1	f	m f 1
267	Clark, Wm J (see d 2)	j	farmer	15	1	f s	m f 1
268	Clark, Fredk (see d 2)	j	farmer	15	1	f s	m f 1
272	Cain, Timothy		laborer	16	1	f	m f 1
286	Courtice, W L	j	farmer	15	b f	t	m f 1

POLLING SUB DIVISION NO. 3

NO. ON ROLL.	NAME.	JUROR.	OCCUPATION	LOT	CON	QUALIFICATION	P. D.
311	Calvert, Hamilton	j	farmer	17	2	t	m f 1
327	Cowan, George jr	j	farmer	18	2	f	m f 1
333	Counor, Jeremiah H	j	farmer	18	3	f	m f 1
334	Counor, Thomas	j	farmer	18	3	f s	m f 1
1921	Cowan, George S	j	shoemaker	15	2	f	m f 1
1922	Clark, W J	j	publisher	15	2	t	m f 1
1934	Decker, George W	j	livery	16	1	f	m f 1
1928	Dickie, John	j	merchant	15	2	t	m f 1
1931	Daubar, W T	j	merchant	15	2	f	m f 1
1936	Dewar, Malcolm C	j	physician	15	2	m	m f 1
1964	Dillingham, Robt	j	undertaker	15	1	t	m f 1
499	Fawcett, George	j	laborer	18	2	f	m f 1
1945	Findlay, Alexander	j		15	2	f	m f 1
1947	Falconer, Alexander	j	sadler	15	2	f	m f 1
551	Gormley, James	j	farmer	17	b t	f	m f 1
552	Gormley, Joseph	j	farmer	17	b f	f	m f 1
553	Gormley, Daniel	j	farmer	17	b f	f	m f 1
555	Gormley, Robert J	j	farmer	17	b f	f	m f 1
556	Gormley, John	j	farmer	17	b f	f	m f 1
557	Gormley, David	j	farmer	17	b f	f	m f 1
558	Gormley, Thos A	j	farmer	17	b f	f	m f 1
559	Gormley, William	j	farmer	17	b f	f	m f 1
560	Gormley, Edward	j	farmer	17	b f	f	m f 1
561	Gormley, Samuel	j	farmer	17	b f	t	m f 1
564	Gormley, Arthur	j	farmer	17	b f	f	m f 1
565	Gormley, Richard	j	farmer	17	b f	f	m f 1
593	Gee, John E (see d 2)	j	farmer	15	1	f	m f 1
594	Gee, Frank (see d 2)	j	farmer	15	1	f	m f 1
595	Gillman, John	j	farmer	18	2	f	m f 1
614	Goodwin, John	j	farmer	16	3	t	m f 1
1950	Gordon, Wm D (see d 2)	j	cooper	15	1	f	m f 1
1952	Gordon, John	j	carpenter	15	1	f	m f 1
1956	Gordon, James	j	hotelkeeper	15	2	f	m f 1

ring,*

from the Lake

ctions and Elec-

ALIFICATION

m f 1

m f 1

m f 1

m f 1

m f 1

m f 1

m f 1

m f 1

m f 1

m f 1

m f 1

m f 1

m f 1

m f 1

m f 1

m f 1

m f 1

m f 1

m f 1

NO. ON ROLL	NAME	JURISDICTION	OCCUPATION	AGE	SEX	QUALIFICATION		P. O.
1957	Gallagher, E F	j	clergyman	15	1	t	m f	1
1958	Greig, T A	j	agent	15	2	t	m f	1
685	Holt, George		farmer	16	1	f	m f	1
686	Holt, Charles	j	farmer	16	1	t s	m f	1
715	Hopkins, W H	j	V S	15	2	t	m f	1
717	Haight, Edward C	j	farmer	15	3	f	m f	1
1966	Herks, Shaderick		R R	16	2	t	m f	1
1968	Hiltz, Alonza	j	merchant	15	2	f	m f	1
1972	Harrigan, William		laborer	16	2	f	m f	1
1973	Ham, Wm G	j	wright	15	2	f	m f	1
1979	Howlett, William		laborer	15	1	t	m f	1
828	Jones, Uriah	j	farmer	18	1	f	m f	1
1985	Jacques, John		laborer	16	2	f	m f	1
923	Linton, John R	j	farmer	16	b f	f	m f	1
932	Leslie, John	j	shoemaker	15	1	f	m f	1
949	Leach, William	j	farmer	17	2	b	m f	1
952	Law, Thomas		farmer	15	2	t	m f	1
953	Law, Thomas jr	j	farmer	15	2	t	m f	1
956	Linton, James (see d 2)		carpenter	16	2	f	m f	1
1989	Logan, Wm (see d 2)	j	merchant	15	2	f	m f	1
1996	Law, John W		milller	15	2	t	m f	1
1061	Matthews, Frank		laborer	16	1	f	m f	1
1069	McKeown, George		weaver	16	2	f	m f	1
1071	Moore, Henry	j	farmer	18	2	f	m f	1
1087	Moore, Henry		laborer	17	3	f	m f	1
2004	Margach, Nelson		tailor	15	2	t	m f	1
2011	Morrissey, James		mason	15	1	f	m f	1
2115	Moore, Richard	j	smith	15	2	f	m f	1
2020	Mullett, Alfred	j	farmer	15	1	f	m f	1
2115	O'Connor, Jeremiah jr		R R	15	1	t	m f	1
1306	Pollard, Richard (see d 2)	j	farmer	15	b f	t	m f	1
2040	Peak, William	j	teamster	15	1	t	m f	1
1458	Reddin, Timothy	j	farmer	18	3	t	m f	1

POLLING SUB DIVISION NO. 3

QUALIFICATION.		P. O.	NO. ON ROLL.		NAME.	JUROR.	OCCUPATION	LOT	CON	QUALIFICATION.	P. O.
m	f	1	1459	Reddin, John		farmer	18	3	f	m f	1
m	f	1	2043	Rogers, James H	j	baker	15	2	f	m f	1
m	f	1	2044	Rogers, William D	j	baker	15	2	f	m f	1
m	f	1	1512	Shepherd, William		farmer	18	b f	f	m f	1
m	f	1	1542	Salter, George	j	farmer	18	b f	t	m f	1
m	f	1	1560	Salter, Levi	j	farmer	18	b f	t	m f	1
m	f	1	1562	Swallow, Matthew		farmer	18	1	f	m f	1
m	f	1	1563	Swallow, Chas A	j	farmer	18	1	f	m f	1
m	f	1	2049	Smith, David	j	agent	16	2	f	m f	1
m	f	1	1983	Sullivan, Patrick	j	laborer	16	2	t	m f	1
m	f	1	2055	Thom, James		clergyman	15	2	t	m f	1
m	f	1	1757	Vanstone, William	j	farmer	17	1	t	m f	1
m	f	1	1779	Woodruff, Warren		butcher	16	2	t	m f	1
m	f	1	1783	Wilson, George	j	farmer	15	1	t	m f	1
m	f	1	1784	Wilson, Robert	j	farmer	15	1	t	m f	1
m	f	1	2060	Wise, Isaac		merchant	16	2	f	m f	1
m	f	1	2063	Winter, J R		book keeper	16	2	f	m f	1

Voters' List for 1897.

—: Municipality of the —:

Township of Pickering,

Polling Sub Division No. 3.

Comprising all the Lots from No. 15 to No. 18 inclusive, from the Lake to the Fourth Concession Line.

PART II—List of persons entitled to vote at Municipal Elections only.

NO. ON ROLL.	NAME.	JUROR	OCCUPATION	LOT	C N	QUALIFICATION	P. C.
1902	Abrey, Mrs John		widow	15	1	f	29
1905	Abbott, Byron			16	1	f	
1907	Andrew, Mrs James		widow	15	2	f	1
1913	Bunting, B (see d 2)		gentleman	15	2	f	1
1918	Cleudennan, H			15	2	f	17
241	Cowal, John		farmer	18	1	t	2
241	Cowan, William		farmer	18	1	f	2
322	Cowan, George		farmer	18	3	f	6
323	Cowan, Thomas		farmer	18	3	f	6
324	Cowan, Joseph		farmer	18	3	t	6
325	Cowan, James		farmer	18	3	f	6
326	Comiskey, Mrs P		widow	18	3	f	6
1920	Cuthbert, John			15	2	f	29
409	Dafoe, Albert			15	1	f	30
415	Decker, Chas F			17	2	f	17
1926	Dale, S A (see d 2)		spinster	15	2	f	1
1933	Dowswell, A B			15	2	f	29
1935	Dacker, D M			15	1	f	17
1939	Deacon, Mr			15	2	f	

POLLING SUB DIVISION NO. 3.

25

NO. ON ROLL.	NAME.	JUROR.	OCCUPATION	LOT	CON	QUALIFICATION.	P. O.
1785	Dunbar, William		gentleman	15	1	f	2
562	Gormley, Margaret		spinster	17	b f	f	1
566	Gordon, Mrs Elizabeth		widow	17	b f	f	1
606	Gibbons, Margaret		widow	16	1	f	1
951	Greenwood, J H		solicitor	17	2	f	17
1351	Haight, Seneca			15	3	f	
554	Hick, Benjamin			16	b f	f	
702	Holboura, T W		farmer	15	1	f	2
1969	Head, Mrs Emily		widow	15	2	f	1
1970	Head, Etta		spinster	15	2	f	1
1981	Hodgson, William			16	2	f	29
385	Knowles, Richard			17	2	f	
902	Knox, Thomas		farmer	18	3	f	6
903	Knox, Mrs		widow	18	3	f	6
118	Linton, Isaac			15	2	f	
933	Leng, George		farmer	17	2	f	1
937	Leavens, Mrs D (see d 2)		widow	15	1	f	1
950	Liscombe, Isabella		spinster	17	2	f	10
2000	Maver, Mrs (see d 2)		widow	15	1	f	1
2001	McCausland Mary (see 1)		spinster	15	2	f	1
2002	McCausland, Susannah		spinster	15	2	f	1
1232	Nowlan, Thos (see d 2)		farmer	15	b f	f	8
1233	Nowlan, James (see d 2)		farmer	15	b f	f	8
1234	Nowlan, Robt (see d 2)		farmer	15	b f	f	8
2011	O'Connor, Mary		spinster	15	1	f	1
2012	O'Connor, Honora		spinster	15	1	f	1
2116	O'Connor, C A		spinster	15	1	f	1
1264	O'Connor, Helen		spinster	18	1	t	1
1265	O'Connor, Kate		spinster	18	1	t	1
1276	O'Leary, William		hotelkeeper	16	1	f	34
1350	Percy, John		farmer	17	3	f	6
2027	Pollard, Mrs		widow	15	2	f	1
2028	Pirie, Mrs		widow	15	2	f	1

ring, *

from the Lake

ctions only.

QUALIFICATION

f	5
f	2
f	29
f	1
f	1
f	17
t	2
f	2
f	6
f	6
t	6
f	6
f	6
f	29
f	30
f	17
f	1
f	29
f	17
f	

NO. ON ROLL	NAME.	JUROR	OCCUPATION	LOT	CON	QUALIFICATION.	P. O.
1959	Remmer, John		farmer	15	2	f	1
1266	Reddin Daniel			18	1	f	29
1307	Roach, W (see d 2)			15	b f	f	
1449	Ryan, John			16	1	f	29
1464	Richardson, J N (see 2)		gentleman	17	2	f	1
2038	Reid, Mrs M		widow	16	2	f	29
287	Squire, William			15	b f	f	18
2046	Stewart, Mrs John		widow	15	1	f	1
1543	Salter, Isaac			18	b f	f	30
1547	Sleep, William		farmer	18	1	f	1
1548	Sleep, Edward		farmer	18	1	f s	1
1549	Sleep Walter		farmer	18	1	t s	1
1576	Spink, John L			16	2	f	29
1984	Sulliyon, William			16	2	t	24
615	Varty, Mrs		widow	16	3	f	1
312	Westlake, Mrs		widow	17	2	f	1
1929	Wright, Ed (see d 2)		gentleman	15	2	f	1
2061	Westlake, William			15	2	f	17
2062	Willson, R S			15	2	t	17

Voters' List for 1897.

—: Municipality of the —:

Township of Pickering,

Polling Sub-Division No. 3.

Comprising all the Lots from No. 15 to No. 18 inclusive, from the Lake to the Fourth Concession Line.

PART III.—List of Persons entitled to vote at Elections to the LEGISLATIVE ASSEMBLY only.

NO. ON ROLL.	NAME.	JUROR	OCCUPATION	LOT	CON	QUALIFICATION	P. O.
	13 Allin, George		laborer	15	1	m f	1
	20 Allaway, Rupert		cooper	16	2	m f	1
	21 Allaway, James		cooper	16	2	m f	1
	62 Boyce, Henry		laborer	15	2	m f	1
	1919 Burrows, Heber		clerk	15	2	m f	1
	260 Clark, Thomas		laborer	17	b f	m f	1
	303 Crow, George T		laborer	15	2	m f	1
	488 Found, Thomas		laborer	15	b f	m f	1
	1946 Fawkes, Wm H		laborer	16	1	m f	1
	580 Gormley, Robert		laborer	18	b f	m f	1
	1954 Gordon, W J		barber	15	2	m f	1
	703 Hall, George		laborer	18	1	m f	1
	714 Holt, James		laborer	17	1	m f	1
	936 Latchett, John		laborer	15	b f	m f	1
	1070 Morrish, Thomas		laborer	16	1	m f	1
	2119 Nicholson, John		laborer	15	2	m f	1
	1337 Payne, Henry		laborer	15	3	m f	1
	1523 Shepperd, Wm J		laborer	17	1	m f	1
	2068 Smith, David J		laborer	15	1	m f	1
	1786 Wilson, Joshua		laborer	15	1	m f	1

QUALIFICATION. P. O.
 f 1
 f 29
 f 29
 f 1
 f 29
 f 18
 f 1
 f 30
 f 1
 f s 1
 f s 1
 f 29
 f 24
 f 1
 f 1
 f 1
 f 17
 f 17

Voters' List for 1897.

—: Municipality of the :—

Township of Pickering,

Polling Sub Division No. 4.

Comprising all the Lots from No. 19 to No. 26 inclusive, from the Lake to the Fourth Concession Line.

PART I.—List of persons entitled to vote at both Municipal Elections and Elections to the Legislative Assembly.

NO. ON ROLL.	NAME.	JUROR	OCCUPATION	LOT	CON	QUALIFICATION	P. C.
16	Annan, Andrew		farmer	22	b f	t	m f 2
31	Ackford, Albert	j	farmer	24	2	f	m f 2
35	Arrowsmith, Elijah		farmer	21	1	t	m f 1
10	Anderson, William		farmer	26	1	f	m f 2
11	Anderson, Robert	j	farmer	26	1	f	m f 2
1	Andrew, James	j	farmer	19	b f	f	m f 1
60	Booth, Albert		laborer	25	1	t	m f 2
76	Bellehamber, William		gentleman	23	b f	f	m f 2
77	Bunker, W W		farmer	20	1	f	m f 1
78	Bunker, Frederick	j	farmer	20	1	f	m f 1
79	Bunker, Wm H	j	farmer	20	1	f	m f 1
80	Bunker, Charles	j	farmer	20	1	t	m f 1
81	Bush, Brentwood		farmer	23	1	f	m f 2
107	Boyes, Arthur	j	farmer	25	3	t	m f 1
138	Brander, John	j	farmer	26	2	t	m f 2
140	Burkholder, A C		farmer	26	2	t	m f 7
141	Burkholder, J H	j	farmer	26	2	t	m f 7
181	Brignall, Amos	j	farmer	20	3	t	m f 6
250	Conway, Gregory		laborer	26	b f	t	m f 2

POLLING SUB-DIVISION NO. 4

No. ON ROLL.	NAME.	JUROR.	OCCUPATION	LOT	CON	QUALIFICATION	P. O.
255	Campbell, William	j	smith	25	1	t	m f 2
261	Chisholm, John		clergyman	25	1	t	m f 2
288	Creighton, John		farmer	25	1	t	m f 2
289	Creighton, John jr	j	farmer	25	1	t	m f 2
300	Contts, Thomas		carpenter	24	2	f	m f 2
305	Campbell, Edward	j	farmer	25	2	f	m f 2
322	Cowan, Geo (see d 3)	j	farmer	19	3	f	m f 6
223	Cowan, Thos (see d 3)	j	farmer	19	3	f	m f 6
324	Cowan, Joseph (see d 3)	j	farmer	19	3	f	m f 6
325	Cowan, James (see d 3)	j	farmer	19	3	f	m f 6
396	Deverell, Robert	j	farmer	19	1	f	m f 1
397	Dunbar, Wm (see d 3)		gentleman	25	1	f	m f 2
398	Dales, John R		physician	25	1	in	m f 2
403	Dunn, John	j	farmer	22	3	t	m f 1
406	Dringham, Calvin	j	farmer	19	2	f	m f 1
426	Dwyer, John		farmer	20	2	f	m f 1
427	Dwyer, Michael	j	farmer	20	2	f	m f 1
1569	Decker, David B		farmer	21	2	f	m f 1
393	Downing, George	j	farmer	21	b f	t	m f 1
462	Edwards, William		carpenter	23	b f	f	m f 2
494	Falconer, Robert	j	laborer	25	1	f	m f 2
495	Falconer, George	j	sadler	25	1	t	m f 2
497	Fawcett, Benjamin	j	farmer	22	1	t	m f 1
503	Ferguson, James	i	farmer	26	2	f	m f 2
569	Gormley, Joseph	i	hotelkeeper	23	1	t	m f 2
573	Gordon, Joseph	j	farmer	19	b f	f	m f 1
574	Gordon, Alexander	i	farmer	19	b f	f	m f 1
576	Greenbury, Froderick		laborer	25	1	t	m f 2
577	Greenbury, David		laborer	25	1	t	m f 2
578	Greenbury, Burt		laborer	25	1	t	m f 2
589	Grant, Louis M		wright	25	1	f	m f 2
599	Gourlie, Louis E	j	farmer	24	2	t	m f 2
602	Gillespie, Charles		farmer	24	2	t	m f 2

ng,*

n the Lake

ons and Elec-

IFICATION

m f 2
m f 2

m f 1
m f 2

m f 2
m f 1

m f 2
m f 2

m f 1
m f 1

m f 1
m f 1

m f 2
m f 1

m f 2
m f 7

m f 7
m f 6

m f 2

NO. ON ROLL	NAME.	JUROR	OCCUPATION	LOT	CON	QUALIFICATION.	P. O.
605	Gitchrist, James	j	farmer	26	2	f m t	7
677	Hilts, Wesley		sailor	23	b f	t m f	2
670	Hilts, Hezekiah		laborer	23	b f	t m f	2
672	Hadley, James		laborer	23	b f	f m f	2
688	Henderson, Thomas		carpenter	25	1	f m f	2
691	Howlett, Albert	j	laborer	25	1	t r a f	2
698	Henderson, William	j	carpenter	25	1	f m f	2
702	Holbourn, T W (see d 3)	j	farmer	25	1	f m t	2
728	Hilts, Joseph	j	farmer	26	3	t m f	7
726	Hare, Albert	j	farmer	22	3	t m f	6
884	King, Samuel	j	farmer	24	1	t m f	2
885	King, Charles I	j	farmer	24	1	t m f	2
900	King, Enoch		farmer	24	2	f m f	2
901	King, Henry		farmer	24	2	f m f	2
902	Knox, Thos (see d 3)	j	farmer	19	3	f m f	6
907	King, Charles J		laborer	25	3	f m f	7
933	Leng, Geo (see d 3)	j	farmer	21	1	f m f	1
934	Lamoreaux, Jas A		carpenter	26	1	f m f	2
	Lamereaux, T W		gentleman	22	3	t m f	2
1030	Marquis, Thos B	j	farmer	19	b f	f m f	1
1031	Marquis, Herbert	j	farmer	19	b f	f m f	1
1032	Mansfield, Thos	j	fisherman	23	b f	f m f	2
1042	Moody, Thomas		grain buyer	22	1	m m f	2
1051	Morrison, Henry		farmer	24	b f	f m f	2
1053	Morrison, Henry jr	j	farmer	24	b f	f s m f	2
1054	Morrison, Peter	j	farmer	24	b f	f s m f	2
1055	Morrison, Fleming	j	farmer	24	b f	f s m f	2
1056	Morrison, David	j	farmer	24	b f	f s m f	2
1063	McConochie, Samuel	j	farmer	26	1	f m f	2
1072	McDonald, Charles		R R	25	1	t m f	2
1230	Nicholson, Samuel		R R	24	1	m m f	2
1261	O'Brien, Matthew		sailor	23	b f	f m f	2
1274	O'Brien, William		sailor	23	b f	f m f	2

POLLING SUB-DIVISION NO. 4.

31

QUALIFICATION.		P. O.	NO. ON ROLL.	NAME.	JUROR.	OCCUPATION	LOT	CON	QUALIFICATION.	P. O.	
m f		7	1280	O'Neil, David	j	farmer	19	3	f	m f	1
m f		2	1304	Prouse, James	j	farmer	19	b f	t	m f	2
m f		2	1313	Parker, George	j	merchant	25	1	f	m f	2
m f		2	1314	Parker, John	j	clerk	25	1	f	m f	2
m f		2	1324	Palmer, Alexander	j	farmer	23	2	f	m f	1
m f		2	1325	Palmer, Jas L	j	farmer	20	2	f	m f	1
m f		2	1326	Palmer, Chas S	j	farmer	22	2	f	m f	1
m f		2	1336	Palmer, John	j	farmer	19	3	f	m f	1
m f		7	1338	Pugh, David E	j	farmer	19	2	f	m f	1
m f		6	1339	Peebles, Alexander	j	farmer	23	3	t	m f	6
m f		2	1340	Peebles, William	j	farmer	23	3	t	m f	6
m f		2	1432	Remmer, John (see d 3)	j	farmer	23	b f	f	m f	6
m f		2	1513	Stoner, Abram	j	laborer	22	b f	f	m f	2
m f		2	1514	Sparks, William	j	lbr master	23	b f	f	m f	2
m f		6	1516	Stoner, Edward	j	laborer	23	b f	t	m f	2
m f		7	1522	Smith, George	j	farmer	26	b f	f	m f	2
m f		1	1524	Symons, Joseph	j	farmer	22	b f	t	m f	1
m f		2	1537	Saunders, Thomas	j	farmer	25	1	t	m f	2
m f		2	1538	Saunders, John	j	farmer	25	1	f s	m f	2
m f		1	1539	Saunders, Joseph	j	farmer	25	1	f s	m f	2
m f		1	1547	Sleep, Wm (see d 3)	j	farmer	19	1	f	m f	1
m f		2	1548	Sleep, Edward (see d 3)	j	farmer	19	1	f s	m f	1
m f		2	1549	Sleep, Walter (see d 3)	j	farmer	19	1	f s	m f	1
m f		2	1566	Short, John	j	laborer	24	1	t	m f	2
m f		2	1568	Stotts, George L	j	farmer	21	2	t	m f	1
m f		2	1573	Sleep, Francis	j	farmer	20	2	t	m f	1
m f		2	1580	Spencer, Frank	j	laborer	26	1	t	m f	2
m f		2	729	Stoyer, Sannel	j	gentleman	26	3	f	m f	7
m f		2	1674	Tripp, John	j	gentleman	25	1	f	m f	2
m f		2	1678	Thompson, William	j	farmer	26	2	t	m f	7
m f		2	1701	Tesfy, Patrick	j	farmer	26	3	f	m f	7
m f		2	1760	Welsh, Timothy	j	farmer	21	b f	f	m f	1
m f		2	1762	Wright, William	j	fisherman	23	b f	t	m f	1

NO. ON ROLL	NAME.	JUROR	OCCUPATION	LOT	CON	QUALIFICATION.	P. O.	
1765	White, George	j	burner	26	1	f	m f	2
1778	Wood, George	j	farmer	26	1	f	m f	2
1775	White, James	j	farmer	21	2	t	m f	1
1796	White, William	j	farmer	26	3	f	m f	6
1801	White, James		gentleman	21	3	f	m f	6

QUALIFICATION.		P. O.
f	m f	2
f	m f	2
t	m f	1
f	m f	6
f	m f	6

Voters' List for 1897.

—: Municipality of the —:

Township of Pickering,

Polling Sub Division No. 4.

Comprising all the Lots from No. 19 to No. 26 inclusive, from the Lake to the Fourth Concession Line.

PART II—List of persons entitled to vote at Municipal Elections only.

NO. ON ROLL.	NAME.	JUROR	OCCUPATION	LOT.	CON	QUALIFICATION	P. O.
14	Avis, John H		hotelkeeper	23	b f	f	29
30	Ashbridge, Levi			22	3	f	29
1679	Annan, Robt (see d 2)		farmer	26	2	f	1
2	Andrew, Mrs Jas (see 3)		widow	19	b f	f	1
57	Burrell, Chas			23	b f	f	29
74	Brown, Janet		spinster	25	1	f	2
128	Burk, Bridget		widow	20	3	f	
139	Brand, Margaret		spinster	26	2	f	1
279	Crown, Mrs D		widow	25	1	f	2
1341	Cochraue, Mrs E A		widow	23	3	f	17
432	Decker, D M (see d 3)			22	2	f	17
575	Gordon, Mrs Joseph		widow	19	b f	f	1
588	Gibson, Margaret		widow	23	1	f	2
598	Gourlie, Mrs		widow	24	2	f	2
1525	Gardiner, Mrs		widow	22	b f	f	24
498	Haney, Mrs		widow	22	1	f	
676	Hilts, Mrs James		widow	22	b f	f	2
721	Holmes, Mrs		widow	26	1	f	2
727	Hilts, William		farmer	26	3	t	7

NO. ON ROLL.	NAME.	JUROR	OCCUPATION	LOT	CON	QUALIFICATION.	P. O.
895	Kayes, Jas H		farmer	21	3	t	6
903	Knox, Mrs (see d 3)		widow	19	3	f	6
1135	Lamoreaux, J W			22	3	f	
1136	Lamoreaux, S W			22	3	f	
962	Lawson, James		farmer	25	2	f	7
963	Lawson, David		farmer	25	2	f	7
964	Lawson, Alex		farmer	25	2	f	7
1297	Loye, Robt W			23	b f	f	29
1298	Loye, Spencer			23	b f	f	29
692	McIntosh, John			25	1	f	
1296	Mathews, W D			23	b f	f	29
1763	Monkhouse, Jos.		merchant	23	b f	f	14
1264	O'Connor, Helen (see 3)		spinster	19	1	f	1
1265	O'Connor, Kate (see 3)		spinster	19	1	t	1
182	O'Connor, John			20	3	f	
142	Petty, Charles		manufac'er	26	2	f	7
1305	Parker, Thos		barrister	19	b f	f	29
1315	Pizer, Mrs Wm		widow	25	1	t	2
1776	Palmer, Geo M (see 3)		farmer	21	2	f	1
1458	Reddin, Timothy (see 3)		farmer	19	3	t	6
1459	Reddip, John		farmer	19	3	f	6
1469	Robson, John P		farmer	23	3	f	6
1517	Stoner, Fredk			23	b f	f	
1564	Secker, Sarah		widow	22	1	f	2
36	Tripp, John jr			21	1	f	
75	Thomson, Esther		spinster	25	1	f	2
1672	Tripp, Mrs Hannah		widow	23	b f	f	
1686	Taylor, Elizabeth		widow	23	b f	f	24
1716	Taylor, John F			22	3	f	29
394	Tripp, Ira D			21	b f	t	
603	Tripp, Mrs Joshua		widow	24	2	f	
1761	Westgate, Mrs		widow	20	b f	f	1
1774	Wood, Mrs Mary		widow	26	1	f	2

Voters' List for 1897.

—: Municipality of the —:

Township of Pickering,

Polling Sub-Division No. 4.

Comprising all the Lots from No. 19 to No. 26 inclusive, from the Lake to the Fourth Concession Line.

PART III.—List of Persons entitled to vote at Elections to the LEGISLATIVE ASSEMBLY only.

NO. ON ROLL.	NAME.	JUROR.	OCCUPATION	LOT	CON	QUALIFICATION	P. O.
12	Annan, Thomas		laborer	25	b f	m f	2
29	Ashley, Joseph		laborer	22	2	m f	1
8	Andrew, Thomas		laborer	19	b f	m f	1
73	Bell, William		laborer	23	b f	m f	2
291	Corbett, William		laborer	19	1	m f	1
407	Dunn, Douglas		laborer	22	1	m f	1
413	Dales, F A		physician	26	1	m f	2
428	Dwyer, John jr		laborer	20	2	m f	1
429	Dwyer James		laborer	20	2	m f	1
878	King, James		laborer	23	b f	m f	2
879	King, James jr		laborer	25	b f	m f	2
941	Long, Chance		laborer	25	1	n. f	2
1039	McGuire, Charles		laborer	26	b f	m f	2
1041	McCabe, John		laborer	26	b f	m f	2
1057	Morrish, William		laborer	23	b f	m f	2
1064	McGinty, John		mason	26	2	m f	2
1273	O'Brien, John		laborer	24	1	m f	2
1433	Richards, Alfred		laborer	22	1	m f	1
1439	Remmer, William		laborer	23	b f	m f	1

POLLING SUB-DIVISION NO. 4.

37

NO. ON ROLL.	NAME.	JUROR.	OCCUPATION	LOT	CON	QUALIFICATION.	P. O.
1533	Stoner, George		laborer	22	b f	m f	2
1534	Stoner, Ira		laborer	22	b f	m f	2
1536	Stoner, William		sailor	23	b f	m f	2
1570	Stewart, Robt M		teacher	19	1	m f	1
1572	Shepherd Alex		carpenter	25	1	m f	2

om the Lake

GISLATIVE

QUALIFICATION	P. O.
m f	2
m f	1
m f	1
m f	2
m f	1
m f	1
m f	2
m f	1
m f	1
m f	2
m f	2
m f	2
m f	2
m f	2
m f	2
m f	2
m f	2
m f	2
m f	1
m f	1
m f	1

Voters' List for 1897.

—: Municipality of the :—

Township of Pickering,

Polling Sub-Division No. 5.

Comprising all the Lots from No. 27 to No. 35 inclusive, from the Lake to the Fourth Concession Line.

PART I.—List of persons entitled to vote at both Municipal Elections and Elections to the Legislative Assembly.

NO. ON ROLL.	NAME.	JUROR.	OCCUPATION	LOT	CON	QUALIFICATION	P. O.
4	Annan, Peter	j	farmer	28	b t	f m f	2
5	Annan, John		farmer	28	b f	f m f	2
6	Annis, Chas A		farmer	35	b t	f m f	4
7	Annis, Chas A jr	j	farmer	35	b f	f m f	4
15	Anderson, John	j	farmer	27	1	f m f	2
26	Allison, Andrew		farmer	28	2	f m f	2
27	Allison, Andrew J	j	farmer	28	2	f m f	2
28	Allison, Wm A	j	farmer	28	2	f m f	2
58	Black, Joseph		laborer	32	b f	f m f	3
59	Black, Robert		laborer	32	b f	f m f	3
83	Birns, Thomas	j	farmer	29	1	t m f	2
116	Barkey, Martin	j	farmer	34	2	f m f	7
144	Burkholder, Noah	j	farmer	35	3	f m f	7
146	Burkholder, Harvey		laborer	29	2	t m f	7
155	Burkholder, William	j	farmer	31	3	t m f	7
239	Clark, Charles	j	farmer	29	b f	t m f	2
241	Cowan, John (see d 3)	j	farmer	32	b f	f m f	2
242	Cowan, Wm (see d 3)		farmer	32	b f	f m f	2
243	Cowan, Wm jr (see d 1)	j	farmer	30	b f	f m f	2

POLLING SUB-DIVISION NO. 5

NO. ON ROLL.	NAME.	JUROR	OCCUPATION	LOT.	CON	QUALIFICATION	P. O.	
244	Chester, Thomas	j	farmer	34	b f	f	m f	4
245	Chester, Wilham	j	farmer	34	b f	f	m f	20
246	Crust, John	j	farmer	35	b f	t	m f	3
248	Carson, Thos G		laborer	35	b f	f	m f	3
257	Collins, William	j	farmer	29	b f	t	m f	2
258	Collins, John	j	farmer	29	b f	t	m f	2
270	Corbett, William	j	farmer	27	1	t	m f	2
276	Coulitce, John	j	farmer	34	1	t	m f	3
277	Coulitce George	j	farmer	34	1	t	m f	3
284	Camps, George		R R	35	b f	t	m f	4
292	Courtney, A C	j	farmer	30	1	t	m f	2
294	Carson, Robert	j	farmer	28	1	t	m f	2
304	Chapman, James		laborer	31	2	f	m f	7
306	Clark, Robert	j	farmer	35	2	f	m f	7
307	Clark, John	j	farmer	35	2	f	m f	7
315	Carter, Benjamin	j	farmer	33	2	t	m f	7
317	Cober, John		farmer	33	3	f	m f	7
318	Cober, Jesse	j	farmer	33	3	f s	m f	7
391	Dixon, William	j	farmer	29	b f	t	m f	2
418	Davidson, George	j	farmer	29	3	f	m f	7
419	Davidson, James	j	farmer	29	3	f	m f	7
420	Daviason, Robert	j	farmer	29	3	t	m f	7
421	Davidson, John	j	farmer	29	3	f	m f	7
489	Found, James	j	farmer	27	b f	t	m f	2
492	Found, Robert	j	farmer	29	1	t	m f	2
550	Gosline, Isaac		R R	35	b f	f	m f	4
580	Graham, John	j	farmer	34	b f	f	m f	3
581	Graham, John jr	j	farmer	34	b f	f	m f	3
582	Graham, John	j	farmer	33	b f	f	m f	3
590	Gilmer, William		farmer	28	1	f	m f	2
591	Gilmer, Robert	j	farmer	28	1	f s	m f	2
592	Gilmer, William J	j	farmer	28	1	f s	m f	2
604	Gilchrist, William	j	farmer	27	2	f	m f	7

ing,*

from the Lake

tions and Elec-

ALIFICATION P. O.

m f 2
m f 2

m f 4
m f 4

m f 2
m f 2

m f 2
m f 2

m f 3
m f 3

m f 2
m f 7

m f 7
m f 7

m f 7
m f 2

m f 2
m f 2

m f 2

NO. ON ROLL.	NAME.	JUROR.	OCCUPATION	LOT	CON	QUALIFICATION.	R. O.	
607	Gates, George	j	laborer	31	3	f	m f	7
608	Garland, Robert		farmer	33	3	f	m f	7
609	Garland, John	j	farmer	33	3	f	m f	7
610	Garland, James	j	farmer	33	3	f	m f	7
611	Garland, Robert jr	i	farmer	33	3	f	m f	7
616	Green, John	j	merchant	31	3	t	m f	7
679	Holmes, Cuthbert W	j	farmer	30	b f	f	m f	2
681	Holbourn, S W	j	farmer	32	b f	t	m f	3
682	Holbourn, Thomas		farmer	32	b f	f	m f	3
689	Hedges, George	j	farmer	32	1	f	m f	7
704	Hollinger, William	j	farmer	32	2	f	m f	7
709	Henderson, John	j	farmer	33	2	f	m f	7
727	Hilts, William (see d 4)		farmer	28	3	f	m f	7
826	Judd, Francis		laborer	29	2	f	m f	7
831	Jackson, Arthur	j	farmer	34	3	f	m f	7
870	Kinloch, George	j	farmer	35	1	f	m f	3
887	Karr, John		farmer	29	1	f	m f	2
888	Karr, William	j	farmer	29	1	f	m f	2
924	Leng, Henry		R R	35	b f	f	m f	4
925	Laskey, Thomas		gentleman	35	b f	f	m f	4
926	Luke, Wallace		toll-keeper	34	b f	t	m f	3
938	Lacey, Thomas	j	farmer	31	1	f	m f	2
940	Lotton, William	j	farmer	33	1	f	m f	2
944	Lotton, Marshall	j	farmer	30	1	t	m f	2
945	Lotton, James		farmer	30	1	t	m f	2
946	Lotton, Jonathan	j	farmer	30	1	t	m f	2
947	Lotton, John	j	farmer	30	1	t	m f	2
960	Laughlin, James	j	farmer	34	2	f	m f	7
962	Lawson, James (see d 4)		farmer	29	3	f	m f	7
963	Lawson, David (see d 4)	j	farmer	29	3	f	m f	7
964	Lawson, Alex (see d 4)	j	farmer	29	3	f	m f	7
965	Laughlin, Jos P	j	farmer	28	3	t	m f	7
1034	Marks, Peter	j	farmer	30	b f	t	m f	2

POLLING SUB DIVISION NO. 5

41

QUALIFICATION.		P. O.	NO. ON ROLL.	NAME.	JUROR	OCCUPATION	LOT.	CON	QUALIFICATION	P. O.	
m f		7	1035	Marks, Henry	j	farmer	30	b f	f s	m f	2
m f		7	1134	Mitchell, William	j	farmer	31	b f	t	m f	2
m f		7	1044	Mosher, Seneca		laborer	34	b f	t	m f	3
m f		7	1058	Murray, John		laborer	27	b f	f	m f	2
m f		7	1074	McCrae, James	j	farmer	34	2	f	m f	7
ra f		7	1075	McCrae, John W	j	farmer	34	2	f s	m f	7
m f		2	1076	McCrae, Francis J	j	farmer	34	2	f s	m f	7
m f		3	1078	Monney, William	j	farmer	30	2	t	m f	7
m f		3	1300	Philcox, James		laborer	33	b f	f	m f	3
m f		7	1301	Portwine, Francis		fisherman	35	b f	f	m f	4
m f		7	1308	Parsons, Josiah	j	farmer	33	b f	t	m f	3
m f		7	1309	Parsons, Levi	j	farmer	33	b f	f s	m f	3
m f		7	1316	Pearce, Roger	j	farmer	33	1	f	m f	3
m f		7	1317	Pearce, Joseph	j	farmer	33	1	f	m f	3
m f		7	1318	Pearce, John	j	farmer	33	1	f	m f	3
m f		3	1328	Petty, Chas (see d 4)		manufac'er	31	2	f	m f	7
m f		2	1329	Petty, Wm P	j	farmer	35	2	t	m f	7
m f		2	1331	Poynter, H E	j	smith	31	2	f	m f	7
m f		4	939	Pickens, Thomas		farmer	31	1	f	m f	2
m f		4	1048	Pearce, William		farmer	30	1	f	m f	3
m f		3	1437	Richards, James	j	farmer	27	2	t	m f	2
m f		2	1456	Reesor, John B	j	farmer	34	3	t	m f	7
m f		2	1465	Roach, Frederick		farmer	30	2	f	m f	7
m f		2	1466	Roach, Wesley J	j	farmer	30	2	f	m f	7
m f		2	1467	Roach, Malcom F	j	farmer	30	2	f	m f	7
m f		2	1518	Stotts, Dewitt		farmer	35	b f	f	m f	20
m f		2	1519	Stotts, William	j	farmer	35	b f	f	m f	20
m f		7	1520	Stotts, Lorenzo	j	farmer	35	b f	f	m f	20
m f		7	1545	Strickland, Owen	j	farmer	28	b f	f	m f	2
m f		7	1571	Sinclair, John A	j	farmer	33	1	f	m f	7
m f		7	1577	Smith, Charles		farmer	32	2	f	m f	7
m f		7	1578	Smith, John	j	farmer	32	2	f	m f	7
m f		2	1579	Spencer, William	j	ditcher	31	2	f	m f	7

NO. ON ROLL	NAME.	JUROR.	OCCUPATION	TOT	CON	QUALIFICATION.	P. O.
1582	Stover, C W	j	farmer	28	3	t m f	7
1583	Stover, Alfred	j	farmer	28	3	t m f	7
1590	Stover, Benjamin	j	farmer	29	3	f m f	7
1673	Thom, Alexander	j	farmer	28	b f	f m f	2
1675	Thom, William	j	farmer	28	1	t m f	2
1680	Thom, James	j	farmer	28	2	f m f	7
1684	Toyne, George	j	farmer	31	b f	t m f	3
1687	Taylor, James C		farmer	29	2	f m f	7
1688	Taylor, Wilham J	j	farmer	35	3	f m f	7
1694	Taylor, William		farmer	29	2	f m f	7
1702	Todd, James	j	farmer	32	3	f m f	7
1755	Vanhorn, William	j	farmer	35	1	f m f	3
1898	Yates, Thomas	j	R R	35	b f	f m i	4

QUALIFICATION.

P. O.

m f 7
 m f 7
 m f 7
 m f 2
 m f 2
 m f 7
 m f 3
 m f 7
 m f 7
 m f 7
 m f 7
 m f 3
 m f 4

Voters' List for 1897.

—: Municipality of the —:

Township of Pickering,

Polling Sub Division No. 5.

Comprising all the Lots from No. 27 to No. 35 inclusive, from the Lake to the Fourth Concession Line.

PART II—List of persons entitled to vote at Municipal Elections only.

NO. ON ROLL.	NAME.	JUROR.	OCCUPATION	LOT	CON	QUALIFICATION	P. O.
8	Annis, Andrew		farmer	35	1	f	4
9	Annis, Jeremiah			35	1	f	4
490	Annis, Levi			27	b f	f	
1037	Allison, Mrs Wm		widow	31	b f	f	2
1310	Annis, David			33	b f	f	24
77	Bunker, W W (see d 4)		farmer	28	2	f	1
78	Bunker, Fred (see d 4)		farmer	28	2	f	1
79	Bunker, Wm H (see d 4)		farmer	28	2	f	1
80	Bunker, Chas (see d 4)		farmer	28	2	f	1
1689	Brown, Janet (see d 4)		spinster	30	2	f	2
249	Currah, Mary		spinster	34	b f	f	3
254	Carter, R C			35	b f	f	
316	Carter, Thomas		gentleman	33	2	f	8
397	Dunbar Wm (see d 3 4)		gentleman	35	1	f	2
399	Dixon, Mrs Elizabeth		widow	31	2	f	7
493	Falconer, Geo (see d 4)		sadler	29	2	f	2
295	Gilmer, Rose A		spinster	26	1	f	15
533	Graham, Mrs H		widow	33	b f	f	3
605	Gilchrist, Jas (see d 4)		farmer	27	2	f	7

POLLING SUB-DIVISION NO. 5.

NO. ON ROLL.	NAME.	JUROR.	OCCUPATION	LOT	CON	QUALIFICATION.	P. O.
156	Hood, William			81	3	f	17
697	Hollinger, Mrs M		widow	32	1	f	7
723	Helliwell, H J			28	3	f	20
1695	Holliday, George			29	2	f	
247	Lit'lejohn, Ann		widow	35	b f	f	20
928	Loudon, James			35	b f	f	29
392	McConochie, Saml			29	b f	f	
1047	Medd, Martha		widow	30	1	t	2
1089	Mainland, Isabella		spinster	31	3	f	7
1090	Mainland, Jemima		spinster	31	3	f	7
1091	Mainland, Jessie		spinster	31	3	f	7
1685	Moody, Robert			31	b f	f	
1696	Pizer, William I			29	2	f	
1077	Pallister, Mrs		widow	34	2	f	8
1352	Pugh, Josiah		farmer	27	3	f	8
1353	Pugh, George E		farmer	27	3	f	8
1457	Reesor, Noah		farmer	34	3	f	26
271	Sullivan, Robert			27	1	f	29
240	Tripp, John (see d 4)		gentleman	29	b f	f	2
278	Taylor, James		merchant	34	1	f	8
1036	Tripp, Mrs H (see d 4)		widow	30	b f	f	
1671	Thom, Mrs Ellen		widow	30	b f	f	2
1754	Vanhorn, Mrs E		widow	35	1	f	3
84	White, George (see d 4)		farmer	29	1	f	2
1438	Woodruff, John		farmer	27	2	f	
1777	Walton, Mrs Mercy		widow	27	b f	f	2

Voters' List for 1897.

—: Municipality of the :—

Township of Pickering,

Polling Sub-Division No. 5.

Comprising all the Lots from No. 27 to No. 35 inclusive, from the Lake to the Fourth Concession Line.

PART III.—List of Persons entitled to vote at Elections to the LEGISLATIVE ASSEMBLY only.

NO. ON ROLL.	NAME.	JUROR.	OCCUPATION	LOT	CON	QUALIFICATION	P. O.
72	Brown, Thomas		laborer	32	b f	m f	4
145	Burrows, James		laborer	35	3	m f	7
252	Craven, Edmund		laborer	30	b f	m f	2
253	Chapple, Henry		laborer	30	1	m f	2
412	Degeer, Charles		carpenter	31	2	m f	7
491	Found. William		laborer	29	b f	m f	2
563	Gibson, Robert		laborer	35	b f	m f	4
675	Henderson, Thomas		laborer	32	b f	m f	3
827	Judd, William		laborer	29	2	m f	7
889	Karr, Woodruff		laborer	29	1	m f	2
958	Lintner, Charles		laborer	30	3	m f	7
1038	McKay, Archie		laborer	34	b f	m f	4
1043	Massie, William		laborer	30	b f	m f	2
1049	McGinty, Frank		laborer	28	b f	m f	2
1050	Madill, Preston		laborer	32	1	m f	3
1231	Norris. W J		laborer	32	2	m f	7
1275	Osland, George		laborer	31	3	m f	7
1311	Pratt, James		engineer	35	b f	m f	4
2377	Pearce. John		laborer	30	b f	m f	2

POLLING SUB DIVISION NO. 5.

NO. ON ROLL.	NAME.	JUROR.	OCCUPATION	LOT	CON	QUALIFICATION.	P. O.
1332	Palmer, F J		laborer	30	2	m f	7
1441	Ray, James		laborer	29	1	m f	2
1446	Rees, Edward		laborer	32	1	m f	3
1477	Roach, Ezra		laborer	27	3	m f	7
1532	Sullivan, John		st agent	35	b f	m f	4

Voters' List for 1897.

— Municipality of the —

Township of Pickering,

Polling Sub-Division No. 6.

Comprising all the Lots from No. 1 to No. 10 inclusive, from the Fourth Concession Line to the Seventh Concession Line.

PART I.—List of persons entitled to vote at both Municipal Elections and Elections to the Legislative Assembly.

NO. ON ROLL.	NAME.	JUROR	OCCUPATION	LOT.	CON	QUALIFICATION	P. O.
40	Adamson, John	j	farmer	9	6	t	m f 10
41	Adamson, Simon	j	farmer	9	6	f s	m f 10
44	Adamson, Henry	j	farmer	7	5	t	m f 10
46	Agars, George		laborer	5	6	f	m f 9
152	Bell, William J	j	farmer	2	4	t	m f 5
164	Brown, John	j	farmer	8	5	f	m f 10
173	Bayles, Thomas N	j	farmer	8	5	f	m f 10
184	Bowes, Edward		laborer	10	6	t	m f 10
352	Corbett, Stuart	j	farmer	9	5	t	m f 10
353	Corbett, Alexander	j	farmer	9	5	t	m f 10
356	Clark, William		farmer	8	6	f	m f 10
357	Clark, William G	j	farmer	8	6	f s	m f 10
358	Cammack, Robt	j	farmer	3	4	t	m f 5
430	Dennis, William	j	farmer	4	6	t	m f 9
465	Edwards, John	j	farmer	2	4	f	m f 5
470	Emerson, John	j	laborer	10	6	f	m f 10
612	Gibson, James	j	farmer	10	4	t	m f 10
618	Graham, John		laborer	2	4	f	m f 5
619	Gea, William	j	farmer	7	5	f	m f 10

POLLING SUB-DIVISION NO. 6.

NO. ON ROLL.	NAME.	JUROR.	OCCUPATION	LOT	CON	QUALIFICATION.	P. O.	
620	Gee, Wesley	j	farmer	7	5	f	m f	10
628	Gibson, Judson		farmer	7	6	f	m f	10
629	Gibson, Frederick	j	farmer	7	6	f s	m f	10
750	Harbron, Joseph	j	laborer	7	6	t	m f	9
772	Hortop, James	j	farmer	5	6	f	m f	9
778	Hortop, Jos N	j	farmer	5	6	f	m f	9
823	Ireland, William	j	farmer	9	4	t	m f	10
859	Jones, Alonzo	j	farmer	9	6	t	m f	16
967	Lynde, Charles		postmaster	2	4	f	m f	5
971	Lawrence, Geo E.	j	farmer	5	4	f	m f	5
972	Lawrence, Ira	j	farmer	8	4	f s	m f	5
980	Lawton, John	j	farmer	1	5	f	m f	9
981	Lawton, Frank	j	farmer	1	5	f s	m f	9
982	Lawrence, John		carpenter	3	5	f	m f	9
986	Lidgett, James	j	farmer	10	5	t	m f	10
987	Lidgett, Nelson	j	farmer	10	5	f s	m f	10
	Lawrence, Albert	j	farmer	3	5	t	m f	9
1000	Lewis, John	j	farmer	7	6	t	m f	9
1001	Lewis, Thomas	j	farmer	7	6	t	m f	9
1002	Lewis, Francis	j	farmer	7	6	t	m f	9
1096	McQuay, Frank O	j	farmer	6	4	f	m f	5
1097	McCarthy, F G	j	farmer	7	4	f	m f	5
1104	Maddaford, Emanuel	j	farmer	1	4	t	m f	5
1105	Maddaford, Thomas	j	farmer	1	4	t	m f	5
1106	Maddaford, William	j	farmer	1	4	t	m f	5
1125	McMillan, John	j	farmer	10	4	t	m f	5
1126	McMillan, Robert	j	farmer	10	4	t	m f	5
1127	McMillan, John jr	j	farmer	10	4	t	m f	5
1128	McMillan, William	j	farmer	10	4	t	m f	5
1146	Madden, Thomas	j	farmer	9	5	f	m f	10
1150	Mackie, John	j	farmer	2	6	f	m f	9
1158	Moore, Alexander	j	farmer	10	6	t	m f	10
1159	Moore, Thomas	j	farmer	10	6	t	m f	10

POLLING SUB-DIVISION NO. 6

49

QUALIFICATION		P. O.	NAME.		JUROR	OCCUPATION	LOT.	CON	QUALIFICATION		P. O.
NO. ON ROLL.											
m f	10		1160	Moore, Alex jr	j	farmer	10	6	f s	m f	10
m f	10		1161	Moore, John	j	farmer	10	6	f s	m f	10
m f	10		1173	Mowbray, R R		farmer	3	6	f	m f	9
m f	9		1148	Mackey, Charles	j	farmer	2	6	t	m f	9
m f	9		1149	Mackey, Sylvester		farmer	2	6	f	m f	9
m f	9		1241	Newton William		laborer	2	6	t	m f	9
m f	10		1272	Orvis, Selah		farmer	3	4	f	m f	5
m f	16		1231	O'Leary, Timothy		farmer	4	4	f	m f	5
m f	5		1283	Orvis, Nathan		laborer	3	4	f	m f	5
m f	5		1284	Orvis, Myron		laborer	3	4	f	m f	5
m f	5		1287	Orvis, William P	j	farmer	9	4	t	m f	5
m f	9		1344	Puckrin, Isaac (see d 1)		farmer	5	4	f	m f	5
m f	9		1345	Puckrin, John (see d 1)	j	farmer	5	4	f	m f	5
m f	9		1346	Puckrin, Simon (see d 1)	j	farmer	5	4	f	m f	5
m f	10		1347	Puckerin, Wm (see d 1)	j	farmer	5	4	f	m f	5
m f	10		1367	Plaskett, James	j	farmer	7	4	t	m f	5
m f	9		1374	Parkins, Aaron	j	farmer	4	5	f	m f	9
m f	9		1381	Parkins, William	j	farmer	4	6	f	m f	9
m f	9		1382	Parrott, Robert	j	farmer	5	5	t	m f	9
m f	9		1394	Pallister, John	j	farmer	6	6	t	m f	9
m f	5		1362	Pilkey, Henry C	j	farmer	3	5	f	m f	5
m f	5		1460	Reiney, William		butcher	2	4	f	m f	1
m f	5		1474	Redman, Ed	j	farmer	1	6	t	m f	9
m f	5		1476	Redman, Seth	j	farmer	4	6	f	m f	9
m f	5		1478	Rodd, John		merchant	3	5	f	m f	9
m f	5		1481	Rogers, Clarkson		farmer	6	6	f	m f	9
m f	5		1482	Rogers, Alfred	j	farmer	6	6	f	m f	9
m f	5		1484	Richardson, Thomas	j	laborer	4	6	f	m f	9
m f	5		1717	Redman, Seth		farmer	5	5	f	m f	9
m f	10		1585	Smith, Frank T	j	farmer	8	4	f	m f	5
m f	9		1586	Squiar, William	j	farmer	6	4	f	m f	10
m f	10		1588	Seldon, John	j	farmer	9	5	f	m f	10
m f	10		1589	Saunders, William	j	farmer	7	5	t	m f	10

POLLING SUB-DIVISION NO. 6

NO. ON ROLL.	NAME.	JUROR.	OCCUPATION	LOT	CON	QUALIFICATION.	P. O.	
1601	Scott, Mr	j	farmer	1	4	t	m f	5
	Sanderson, Thomas	J	farmer	8	5	t	m f	10
1603	Sadler, Wilfred		farmer	5	5	f	m f	9
1607	Salton, Geo		farmer	3	6	f	m f	9
1608	Salton, John W	i	farmer	3	6	f s	m f	9
1610	Sadler, William	j	farmer	5	6	t	m f	9
1611	Smith, William	j	farmer	8	4	t	m f	5
1716	Thompson, Frank	j	farmer	5	5	t	m f	9
1718	Tripp, Joseph	j	farmer	3	6	t	m f	9
1724	Tate, William		gentleman	10	6	f	m f	10
1825	Wilson, Richard		farmer	8	5	f	m f	10
1828	Wilson, William		carpenter	10	6	f	m f	10
1840	Wilson John	j	farmer	6	5	t	m f	9
1845	Weatherill, Bailey	J	farmer	6	5	f	m f	9
1844	Wagner, Benjamin	j	smith	3	6	f	m f	9
1846	Wilson, George	j	farmer	10	6	f	m f	10

Voters' List for 1897.

—: Municipality of the :—

Township of Pickering,

Polling Sub-Division No. 6.

Comprising all the Lots from No. 1 to No. 10 inclusive, from the Fourth Concession Line to the Seventh Concession Line.

PART II—List of persons entitled to vote at Municipal Elections only.

NO. ON ROLL.	NAME.	JUROR.	OCCUPATION	LOT	CON	QUALIFICATION.	P. O.
45	Adamson, Mrs E		widow	7	5	f	10
163	Brignall, Mrs Jane		widow	3	5	f	9
165	Brown, Mary		widow	7	5	f	10
319	Colwell, T G		butcher	1	5	t	17
328	Chapman N J (see d 1)		farmer	9	4	t	5
329	Chapman, F M (see d 1)		farmer	9	4	t	5
330	Chapman, E L (see d 1)		farmer	9	4	t	5
1162	Cowan, Wm (see d 3 5)		farmer	10	6	f	2
1130	Dunlop, Mrs S		widow	10	4	f	29
154	Edwards, William		farmer	2	4	f	16
1114	Fotheringham, Mrs J		widow	1	4	f	17
1612	Farewell, J E		barrister	8	4	f	17
431	Gold, Matthew		clergyman	4	6	f	17
613	Gibson, Mrs George		widow	10	4	f	10
1238	Gold, W S (see d 1)		gentleman	2	6	f	17
774	Harrison, Mrs A		widow	7	6	f	9
1288	Haney, Alexander			9	4	f	29
1395	Hyfield, Mrs J		widow	6	6	f	15
732	Hardy, Henry			1	4	f	

NO. ON ROLL.	NAME.	JUROR.	OCCUPATION	LOT	CON	QUALIFICATION	5 2.
835	Johnston, Graham		farmer	10	5	t	10
860	Jones, John C		farmer	9	6	f	16
1380	Jones, Mrs George		widow	1	6	f	17
42	Larkin, Patrick		gentleman	9	6	f	29
320	Mackey, Frank			1	5	f	
321	Mackey, Charles			1	5	f	
354	McKittrick, Mrs		widow	9	5	f	10
359	Madill, Wm B (see d 1)			3	4	f	
1003	Mowbray, Mrs E		widow	7	6	f	17
1095	McQuay, Mrs Thomas		widow	6	4	f	5
1107	McGillivray, John A		barrister	1	4	f	29
1108	McGillivray, Theo A		barrister	1	4	f	17
1109	McGillivray, Chas		physician	1	4	f	17
1110	McGillivray, Donald		physician	1	4	f	33
1111	McGillivray, N H			1	4	f	17
1112	McGillivray, Mrs C A		widow	1	4	f	17
1113	McGillivray, Miss E		spinster	1	4	f	17
1133	Mackey, Sylvester			3	4	f	17
1368	McCann, Philip			7	4	f	17
1369	McCann, Thomas			7	4	f	17
1841	Montgomery, Mrs		widow	6	5	f	17
1377	Prouse, William		farmer	1	6	t	9
1378	Prouse, Arthur		farmer	1	6	t	9
1379	Prouse, William jr		farmer	1	6	t	9
331	Raham, J C			9	4	f	33
1163	Richardson, F J (see 2)		gentleman	9	5	f	17
1242	Robb, John		farmer	2	6	f	17
1468	Rogers, Royal		farmer	8	4	f	9
1472	Reid, Mrs Sarah		widow	3	5	f	9
1475	Redman, William			1	6	f	31
751	Snell, Mrs Samuel		widow	6	7	f	9
824	Smith, G Y		barrister	9	4	f	17
1129	Smith, John			10	4	f	17

Voters' List for 1897.

Municipality of the

Township of Pickering,

Polling Sub-Division No. 6.

Comprising all the Lots from No. 1 to No. 10 inclusive, from the Fourth Concession Line to the Seventh Concession Line.

PART III.—List of Persons entitled to vote at Elections to the LEGISLATIVE ASSEMBLY only.

NO. ON ROLL.	NAME.	JUROR.	OCCUPATION	LOT	CON	QUALIFICATION.	P. O.
47	Astridge, Henry		laborer	3	6	m f	9
160	Bee, John H		laborer	3	4	m f	5
342	Childerose, Andrew		laborer	7	4	m f	5
521	Fardale, Samuel		laborer	4	6	m f	9
657	Graham, Edward		laborer	8	6	m f	10
571	Gerry, Samuel		laborer	10	5	m f	10
832	Jacks, Thomas		laborer	5	4	m f	5
1004	Lawrence, Edward		carpenter	4	6	m f	9
1115	Marritt, Frank		laborer	4	4	m f	5
1147	McBrien, Joseph		laborer	6	5	m f	9
1271	Orvis, Amos B		farmer	3	4	m f	9
1282	Orvis, Alvin		merchant	3	5	m f	9
1363	Plowman, Donald		laborer	2	4	m f	5
1462	Richardson, John		laborer	6	4	m f	5
1463	Richardson, George		laborer	3	6	m f	9
1479	Richardson, Nathan		laborer	7	6	m f	9
1606	Salton, James		laborer	2	6	m f	9
1633	Sterriker, Chris		laborer	7	6	m f	9
1838	Wilson, Walter		laborer	5	5	m f	10
1850	Waddington, Albert		laborer	3	6	m f	9

Voters' List for 1897.

—: Municipality of the —:

Township of Pickering,

Polling Sub Division No. 7.

Comprising all the Lots from No. 11 to No. 18 inclusive, from the Fourth Concession Line to the Seventh Concession Line.

PART I.—List of persons entitled to vote at both Municipal Elections and Elections to the Legislative Assembly.

P. O.	NO. ON ROLL	NAME.	JUROR	OCCUPATION	LOT	CON	QUALIFICATION.	P. O.
		Aicken, John	j	farmer	18	4	t m f	6
		Aicken, James	j	farmer	18	4	t m f	6
	166	Brown, Robert		carpenter	11	6	f m f	10
	170	Bray, Walter (see d 2)	j	farmer	11	4	t m f	5
	179	Badgerow, William	j	farmer	18	4	t m f	10
	186	Byers, James	j	farmer	18	6	f m f	10
	198	Burton, John	j	farmer	16	6	f m f	11
	206	Briguall, W N		laborer	11	5	f m f	10
	207	Brignall, Benjamin		laborer	11	5	f m f	10
	211	Burkholder, Aaron	j	farmer	18	6	t m f	10
	2141	Boddell, William	j	merchant	18	5	f m f	11
	2143	Brown, T C		wright	18	5	f m f	11
	2144	Bear, Thomas		laborer	18	6	t m f	11
	2147	Burk, Joseph	j	gardener	18	5	f m f	11
	2165	Bateson, U E		physician	18	5	t m f	11
	2150	Beattie, James		laborer	18	6	t m f	11
	301	Carlton, Samuel		laborer	11	4	t m f	10
	313	Crawford, Norman		laborer	18	4	t m f	6
	345	Connor Isaac	j	farmer	15	5	f m f	11

NO. ON ROLL.	NAME.	JUROR.	OCCUPATION	LOT	CON	QUALIFICATION	P. O.
846	Carey, Michael		laborer	11	5	t m f	10
850	Crummer, William		milller	12	5	t m f	10
860	Catherwood, Thomas	j	farmer	14	6	f m f	10
866	Clive, James		laborer	15	6	t m f	10
2149	Cowie, William		agent	18	5	f m f	11
2158	Carlton, William		laborer	18	6	t m f	11
2160	Cowie, John	j	farmer	18	5	f m f	11
2162	Coltman, William		teacher	18	5	t m f	11
433	Dunlop, Hamilton		laborer	11	6	f m f	10
434	Devitt, William	j	farmer	15	6	f m f	10
446	Devitt, John		farmer	14	5	f m f	10
447	Devitt, Robert	j	farmer	14	5	f m f	10
448	Devitt, John jr	j	farmer	14	5	f m f	10
467	Ellicott, Harry	j	farmer	16	4	f m f	6
468	Ellicott, William	j	farmer	16	4	f m f	6
515	Fuller, Henry C	j	farmer	15	4	t m f	6
516	Fuller, Charles		farmer	15	4	f m f	6
523	Ferguson, George		laborer	14	4	t m f	6
621	Gleeson, Edward	j	hotelkeeper	12	5	t m f	10
623	Gleeson, Michael		postmaster	11	6	f m f	10
632	Gammage, Thomas	j	farmer	18	5	t m f	11
637	Green, F L		milller	12	6	f m f	10
638	Green, Walter S		milller	12	6	f m f	10
736	Hubbard, Asa	j	farmer	18	4	f m f	11
740	Hamilton, Alfred		laborer	18	5	t m f	11
743	Hamilton, John	j	farmer	16	5	t m f	10
168	Hick, James	j	farmer	12	5	f m f	10
833	Jackson, Edgerton	j	farmer	11	5	f m f	10
834	Jackson, George	j	farmer	11	5	f m f	10
835	Johnston, Graham (see 6)	j	farmer	11	5	t m f	10
838	Johnston, Lancelot	j	farmer	16	6	f m f	11
839	Johnston, Oliver		farmer	16	6	f m f	11
843	Jackson, W H		postmaster	18	4	f m f	6

POLLING SUB DIVISION NO. 7.

57

P. O.	NO. ON ROLL.	NAME.	JUROR.	OCCUPATION	LOT	CON	QUALIFICATION.	6
10	844	Jackson, James		smith	18	4	f m f	6
10	904	Keeler, Lorenzo	j	farmer	12	4	t ra f	10
10	990	Lynde, John	j	farmer	12	5	t m f	10
10	996	Liscombe, W H	j	farmer	14	6	f m f	10
11	997	Law, George	j	smith	11	6	t m f	10
11	2178	Littlejohn, Joram		laborer	18	5	t m f	11
11	2179	Littlejohn, John		laborer	18	5	f m f	11
11	1098	McBrady, Robt (see d 2)	j	farmer	12	4	f m f	10
10	1100	McCormack, James		farmer	17	4	f m f	11
10	1101	McCormack, Thomas	j	farmer	17	4	f m f	11
10	1102	McCormack, William	j	farmer	17	4	f m f	11
10	1131	Medd, Richard	j	farmer	18	4	t m f	11
10	1139	Meen, Benjamin		farmer	11	5	f m f	10
6	1140	Meen, Frederick	j	farmer	11	5	f m f	10
6	1142	Matthews, Peter		laborer	18	5	t m f	11
6	1151	Mackey, Levi		bailiff	12	5	t m f	10
6	1168	McDonald, Thomas H		clergyman	11	6	t m f	10
6	1192	Miller, Robert	j	farmer	15	6	f m f	11
10	1350	Perey, John (see d 3)	j	farmer	17	4	f m f	6
10	1354	Pengelly, William		farmer	18	5	f m f	10
11	1355	Pengelly, William jr	j	farmer	11	4	t m f	10
10	1365	Pengelly, James	j	laborer	13	5	t m f	10
10	1384	Philip, George		farmer	17	6	f m f	11
11	1385	Philip, Thomas	j	farmer	17	5	f m f	11
11	1386	Philip, John	j	farmer	17	6	f m f	11
10	1387	Philip, George jr	j	farmer	17	6	f m f	11
10	2188	Poucher, Thomas	j	auctioneer	18	5	f m f	11
10	2194	Price, Robt J		farmer	18	5	f m f	11
10	1469	Robson, J P (see d 4)	j	farmer	18	4	f m f	6
10	1587	Somerville, Robert	j	farmer	11	5	f m f	10
11	1492	Shea, John		laborer	13	5	f m f	10
11	1594	Scott, James	j	farmer	15	4	t m f	6
6	1613	Sadler, Thomas	j	farmer	13	6	f m f	10

POLLING SUB-DIVISION NO. 7.

NO. ON ROLL.	NAME.	JUROR.	OCCUPATION	LOT	CON	QUALIFICATION	P. O.
1621	Stevenson, S H	j	farmer	18	6	f m f	11
1622	Stevenson, John	j	farmer	18	6	f m f	11
1627	Stewart, Samuel	j	farmer	13	6	t m f	10
1358	Sadler, William		farmer	13	6	f m f	10
1709	Teefy, John		shoemaker	11	5	f m f	10
1722	Tremble, Alfred		laborer	11	5	t m f	10
1727	Taylor, Spencer	j	farmer	14	6	t m f	10
1828	Wilson, Richard jr (see 6)	j	farmer	11	6	t m f	10
1824	Wilson, Newrick (see 6)	j	farmer	11	6	t m f	10
1826	White, Lorenzo	j	farmer	13	6	f m f	10
1827	White, Melville	j	farmer	13	6	f s m f	10
1834	Wilson, Thomas		farmer	13	5	t m f	10
1842	Ward, George		teacher	11	6	t m f	10
2199	Young, George	j	carpenter	18	5	t m f	10
2206	Young, Joseph A		carpenter	18	5	f m f	11

Voters' List for 1897.

—: Municipality of the —:

Township of Pickering,

Polling Sub-Division No. 7.

Comprising all the Lots from No. 11 to No. 18 inclusive, from the Fourth Concession Line to the Seventh Concession Line.

PART II—List of persons entitled to vote at Municipal Elections only.

NO. ON ROLL.	NAME.	JUROR	OCCUPATION	LOT	CON	QUALIFICATION.	P. O.
14	Avis, J H (see d 4)		hotelkeeper	14	4	f	29
208	Brignall, Mrs Ann		widow	11	5	f	10
2145	Barnes, Ann		spinster	18	6	f	12
741	Britton, George			18	5	f	
1143	Beaton, J S		merchant	18	5	f	30
1202	Boyer, Ira D		musician	14	6	f	15
151	Bailey, William		farmer	18	4	f	17
2151	Beattie, Annie		spinster	18	6	f	
180	Crawford, W F (see d 1)			18	4	f	33
347	Cowan, John		carpenter	18	5	f	11
745	Carpenter, Ira B		gentleman	16	5	f	17
1138	Cartwright, Mr		solicitor	15	4	f	29
2164	Durham, Mrs N		widow	18	5	f	11
171	Elliott, Mrs A		widow	11	4	f	5
1201	Ensign, Mrs Van		widow	14	6	f	15
517	Fuller, John		farmer	14	4	f	27
522	Fisher, Mrs		widow	11	6	f	16
593	Gee, John E (see d 2.3)		farmer	14	6	f	1
594	Gee, Frank (see d 2.3)		farmer	14	16	f	1

POLLING SUB-DIVISION NO. 7

NO. ON ROLL.	NAME.	JUROR	OCCUPATION	LOT	CON	QUALIFICATION	P. O.
639	Green, Mrs S		widow	11	6	f	29
1728	Geddes, James			14	6	f	
737	Houck, Mrs		widow	16	4	f	17
749	Howell, Mrs H		widow	15	5	f	17
1132	Hubbard, Mrs W		widow	18	4	f	11
1357	Hamilton, Mrs		widow	13	5	f	29
902	Knox, Thos (see d 3 4)		farmer	15	4	f	6
908	Knox, Mrs (see d 3 4)		widow	15	4	f	6
995	Liscombe, Isabella (see 3)		spinster	11	6	f	10
2159	Mechin, Hugh		merchant	18	6	f	11
640	McKay, Mrs Ann		widow	11	6	f	10
1141	McKay, Mrs		widow	11	5	f	10
1190	Miller, John		farmer	17	6	f	11
1191	Miller, James		solicitor	17	6	f	11
1193	Miller, John jr		farmer	17	6	f	11
1194	Miller, George		farmer	17	6	f	11
1195	Miller, Andrew		farmer	17	6	f	11
1200	Madill, James B		farmer	14	6	f	10
1137	McDonald, Mr		solicitor	15	4	f	29
2181	McIntyre, Mrs Mary		widow	18	5	f	11
1376	Phillips, R S		farmer	18	5	f	11
1890	Philip, Colin		farmer	18	5	f	11
2187	Palmer, Mrs G S		widow	18	5	f	11
1103	Puckrin, Isaac (see 1'6)		farmer	16	5	f	6
1473	Ryan, Edward			11	5	f	29
1356	Somerville, John			11	4	f	
1366	Shea, Joseph			13	5	f	29
1393	Shea, Mrs Ann		widow	13	5	f	10
1596	Stark, Mrs H		widow	18	5	f	11
1614	Stevenson, N L		farmer	18	6	f	11
1615	Stevenson, Robt F		farmer	18	6	f	11
905	Todd, Wilham			12	4	f	23
1811	Woodruff, Mrs M		widow	18	4	f	1

POLLING SUB-DIVISION NO 7.

61

P. O.	NO. ON ROLL.	NAME.	JUROR.	OCCUPATION	LOT	CON	QUALIFICATION	P. O.
29	212	Wood, Minnie		spinster	18	6	f	10
	2166	Wilson, William		farmer	18	5	f	11
17	633	Wilson, Newrick		farmer	18	5	f	11
17	1825	Wilson, Richard (see 6)		farmer	11	6	f	10
11	2200	Young, Mrs U		widow	18	5	f	11

29
17
17
11
29
6
6
10
11
10
10
11
11
11
11
11
10
29
11
11
11
11
6
29
29
10
11
11
11
23
1

Voters' List for 1897.

—: Municipality of the —:

Township of Pickering,

Polling Sub Division No. 7.

Comprising all the Lots from No. 11 to No. 18 inclusive, from the Fourth Concession Line to the Seventh Concession Line.

PART III.—List of Persons entitled to vote at Elections to the LEGISLATIVE ASSEMBLY only.

NO. ON ROLL.	NAME.	JUROR.	OCCUPATION	LOT	CON	QUALIFICATION.	P. O.
48	Ashton, William J		laborer	15	6	m f	10
2140	Allbright, Louis		laborer	13	6	m f	11
167	Badgerow, Wilfred		laborer	12	4	m f	10
2146	Beattie, Robert		laborer	18	6	m f	11
2152	Beattie, James jr		laborer	18	6	m f	11
157	Badgerow, Jacob		laborer	13	4	m f	10
466	Elliott, William		laborer	11	5	m f	10
513	Farley, George		laborer	16	5	m f	11
744	Hamilton, William		laborer	16	5	m f	10
746	Hamilton, Milford		laborer	16	5	m f	10
822	Irvine, John		laborer	12	4	m f	10
1375	Perry, Peter		laborer	11	5	m f	10
1407	Parrinder, Wm		laborer	13	6	m f	10
1471	Randall, Richard		carpenter	11	5	m f	10
1741	Todd, John		laborer	18	4	m f	11
1836	Wilson, Thos A		laborer	13	5	m f	10

Voters' List for 1897.

—: Municipality of the :—

Township of Pickering,

Polling Sub-Division No. 8.

Comprising all the Lots from No. 19 to No. 28 inclusive, from the Fourth Concession Line to the Seventh Concession Line.

PART I.—List of persons entitled to vote at both Municipal Elections and Elections to the Legislative Assembly.

NO. ON ROLL.	NAME.	JUROR.	OCCUPATION	LOT	CON	QUALIFICATION.	P. O.
38	Allbright, Thomas	j	farmer	25	5	f	m f 8
39	Allbright, Alexander	j	farmer	25	5	f	m f 11
149	Burk, W B	j	farmer	21	4	t	m f 11
150	Burk, John B		farmer	21	4	f	m f 11
187	Blandin, John	j	farmer	22	6	f	m f 11
193	Bell, John C	j	farmer	25	6	f	m f 11
199	Barclay, Chas A	j	farmer	19	6	f	m f 11
2155	Burrell, Alexander		laborer	19	5	t	m f 11
2156	Burrell, John		laborer	19	5	t	m f 11
337	Carter, Joseph	j	farmer	25	4	t	m f 8
361	Calvert, George		farmer	26	6	f	m f 12
362	Calvert, John	j	farmer	26	6	f	m f 12
2153	Connors, Geo W		teacher	19	5	t	m f 11
2161	Cowan, John (see d 7)	j	carpenter	19	6	f	m f 11
2175	Dafoe, David		laborer	19	5	t	m f 11
2176	Dafoe, John		laborer	19	5	t	m f 11
504	Farthing, John		laborer	23	4	t	m f 8
509	Fitzpatrick, Michael	j	farmer	20	4	f	m f 6
518	Frazer, James		laborer	20	5	f	m f 11

NO. ON ROLL.	NAME.	JUROR	OCCUPATION	LOT	CON	QUALIFICATION	5 R.
630	Greig, Robert	j	farmer	24	6	f	m f 11
631	Greig, John	j	farmer	24	5	f	m f 11
2167	Gerow, John M	j	hotelkeeper	19	6	f	m f 11
2168	Gerow, John F	j	clerk	19	6	f	m f 11
739	Hastings, George	j	farmer	24	5	f	m f 11
747	Hogle, James	j	farmer	20	5	f	m f 11
734	Hood, George	j	farmer	24	5	t	m f 11
752	Hastings, Alvin	j	farmer	20	5	t	m f 11
753	Hastings, John	j	farmer	20	5	f	m f 11
754	Harvey, Wesley	j	farmer	20	6	t	m f 11
756	Ham, John	j	farmer	21	6	t	m f 11
757	Ham, Francis	j	farmer	21	6	t	m f 11
759	Holtby, Edward	j	farmer	23	5	f	m f 11
760	Holtby, John H	j	farmer	23	5	f	m f 11
764	Hubbard, Jess	j	farmer	22	5	t	m f 11
766	Hogle, Parsons	j	farmer	19	4	t	m f 11
779	Holtby, William E	j	farmer	23	6	t	m f 11
781	Hood, John jr	j	laborer	19	6	f	m f 11
2170	Hubbard, James	j	laborer	19	5	f	m f 11
840	Jackson, Robert	j	farmer	21	6	f	m f 11
845	Johnston, Harrison	j	farmer	27	6	f	m f 11
1401	Johnston, John	j	farmer	27	6	f	m f 12
895	Kayes, Jas H (see d 4)	j	farmer	24	4	t	m f 6
973	Lotton, David	j	laborer	23	5	t	m f 11
994	Linton, George D	j	farmer	21	5	f	m f 11
983	Laidlaw James	j	laborer	19	6	t	m f 11
2173	Liscomb, Harvey	j	laborer	19	6	t	m f 11
1119	Mitchell, John	j	farmer	23	4	t	m f 6
1120	Mitchell, Joseph	j	farmer	23	4	f s	m f 6
1144	Major, William	j	farmer	26	5	f	m f 8
1145	Major, W. H	j	farmer	26	5	f s	m f 8
2182	Matthews, Wm	j	laborer	19	5	f	m f 11
2183	Mechin, Hugh (see d 7)	j	merchant	19	6	f	m f 11

POLLING SUB DIVISION NO. 8

NO. ON ROLL	NAME.	JUROR	OCCUPATION	LOT	CON	QUALIFICATION.	AGE
f 11	2185 Mairs, John		laborer	19	6	f m f	11
f 11	2186 Mosgrove, William	j	smith	19	6	f m f	11
f 11	2193 McIntyre, Dugald		farmer	19	5	f m f	11
f 11	1246 Norton, William H	j	farmer	26	6	f m f	11
f 11	1852 Pugh, Josiah (see d 5)		farmer	27	4	f m f	8
f 11	1853 Pugh, Geo E (see d 5)	j	farmer	27	4	f m f	8
f 11	1859 Pugh, Oliver H	j	farmer	22	4	f m f	8
f 11	1860 Pugh, Hngh	j	farmer	26	4	f m f	8
f 11	1861 Pugh, Jndson	j	farmer	27	4	f m f	8
f 11	1870 Phillips, John		farmer	22	5	f m f	11
f 11	1871 Phillips, John jr		farmer	22	5	f m f	11
f 11	1872 Phillips, Geo W	j	farmer	22	5	f m f	11
f 11	1876 Phillips, R S (see d 7)	j	farmer	19	5	f m f	11
f 11	1890 Philip, Colin (see d 7)	j	farmer	19	6	f m f	11
f 11	1891 Patterson, John	j	farmer	24	6	f m f	11
f 11	1896 Percy, Uriah	j	farmer	27	6	t m f	12
f 11	1897 Percy, Albert	j	farmer	27	6	f s m f	12
f 11	1298 Percy, William H	j	farmer	27	6	f s m f	12
f 11	1899 Percy, Willis J	j	farmer	27	6	f s m f	12
f 11	1616 Storry, Francis	j	farmer	22	6	t m f	11
f 11	1626 Spears, James V	j	farmer	28	6	f m f	18
f 12	2190 Stephenson, David		laborer	19	6	t m f	11
f 6	1711 Sleigh, John		farmer	27	5	f m f	8
f 11	1614 Stevenson, N L (see 7)	j	farmer	19	5	f m f	11
f 11	1615 Stevenson, R F (see 7)	j	farmer	19	5	f m f	11
f 11	1697 Tool, George	j	farmer	23	4	f m f	6
f 11	1705 Tool, John W	j	farmer	24	4	f m f	8
f 6	1708 Tool, John		farmer	23	5	f m f	8
f 6	1710 Thomson, Adolphus	j	farmer	27	5	t m f	8
f 8	1712 Thornton, Thomas	j	farmer	23	5	f m f	11
f 8	1720 Tomlinson, Frank		laborer	26	6	t m f	11
f 11	2208 Urquhart, Alexander		tailor	19	6	t m f	11
f 11	1791 Wright, Robt	j	farmer	23	6	t m f	11

POLLING SUB DIVISION NO. 8

NO. ON ROLL.	NAME.	JUROR	OCCUPATION	LOT	CON	QUALIFICATION	P. O.
1800	Willson, Edward	j	farmer	21	4	f	m f 11
1802	Whitc, James		farmer	28	4	f	m f 8
1808	White William		farmer	28	5	f	m f 8
1809	Witter, R W	j	farmer	22	4	t	m f 6
1829	Wilber, H B		laborer	24	6	t	m f 11
1837	Wagg, George	j	farmer	27	5	t	m f 12
1838	Wagg, Nelson	j	farmer	27	5	t	m f 12
1847	White, John A	j	farmer	25	5	f	m f 11
1857	Wingfield, John		laborer	22	6	t	m f 11
2197	Williams, James	j	laborer	19	6	f	m f 11
2198	Willis, T B		postmaster	19	6	f	m f 11
2202	Wagner, J H	j	butcher	19	5	f	m f 11
2206	Wilson, Wm (see d 7)	j	farmer	19	5	f	m f 11
2207	Wilbur, Israel		laborer	19	5	t	m f 11
2206	Wilbur, Clive		laborer	19	5	t	m f 11

Voters' List for 1897.

—: Municipality of the —:

Township of Pickering,

Polling Sub-Division No. 8.

Comprising all the Lots from No. 19 to No. 28 inclusive, from the Fourth Concession Line to the Seyenth Concession Line.

PART II—List of persons entitled to vote at Municipal Elections only.

NO. ON ROLL.	NAME.	JUROR	OCCUPATION	LOT	CON	QUALIFICATION.	P. O.
37	Annis, David		farmer	28	5	f	8
151	Brignall, Amos (see d 4)		farmer	19	5	t	6
2172	Barry, John		gentleman	19	6	f	15
2191	Brown, T C (see d 7)		wright	19	6	f	11
1839	Beiere, Charles		undertaker	27	5	f	27
338	Carter, Thos (see d 5)		gentleman	25	4	f	8
2164	Dunham, Mrs N (see 7)		widow	19	6	f	11
2171	Forsyth, J D		farmer	19	6	f	15
782	Hunter, Thomas		farmer	25	6	f	11
2169	Hubbard, Mrs W (see 7)		widow	19	6	f	11
2208	Keast, Mrs Jane		widow	19	5	f	10
2174	Liscombe, Mrs Jane		widow	19	6	f	11
1121	Lamoreaux, T W (see 4)		farmer	23	4	f	2
765	Matthews, C W			22	5	f	
897	McLaren, James		physician	26	4	f	
1122	Major, A E		farmer	28	4	f	8
1123	Major, W S		farmer	28	4	f	8
1124	Major, H H		V S	28	4	f	8
1171	Morgan, John		farmer	28	6	t	12

POLLING SUB DIVISION NO 8.

NO. ON ROLL.	NAME.	JUROR.	OCCUPATION	LOT	CON	QUALIFICATION	AGE
1172	Morgan, Alex		farmer	28	6	t	12
1196	Madill, Henry		farmer	19	6	f	11
1197	Madill, Sylvanns		farmer	19	6	f	11
2181	McIntyre, Mrs M (see 7)		widow	19	6	f	11
2189	McCann, Sarah		spinster	19	5	f	11
1617	McNeal, James			22	6	f	
2154	Rutledge, James		solicitor	19	5	f	17
2192	Reynolds, W M			19	5	f	
767	Robson, W B			19	4	f	
758	Sharrard, Mrs R		widow	21	6	f	15
788	Sharrard, Aaron		gentleman	25	6	f	17
1714	Turner, Jacob		farmer	23	5	f	9
1798	Underhill, Robt		farmer	23	6	f	15
1792	Wright, Frederick		farmer	23	6	t	11
1801	White, Thomas		farmer	28	5	t	8
2199	Young, Geo (see d 7)		carpenter	19	6	t	11
2200	Young, Mrs U (see d 7)		widow	19	6	f	11

Voters' List for 1897.

—: Municipality of the :—

Township of Pickering,

Polling Sub Division No. 8.

Comprising all the Lots from No. 19 to No. 28 inclusive, from the Fourth Concession Line to the Seventh Concession Line.

PART III. — List of Persons entitled to vote at Elections to the LEGISLATIVE ASSEMBLY only.

NO. ON ROLL	NAME.	OCCUPATION	LOT	CON	QUALIFICATION.	P. O.
336	Carter, William	laborer	23	5	m f	11
349	Carr, William	laborer	19	5	m f	6
355	Cochrane, Smith	laborer	20	6	m f	11
373	Cowie, John W	farmer	26	6	m f	11
733	Hackney, Charles	laborer	23	6	m f	11
795	Hanson, Daniel	laborer	28	6	m f	13
796	Hanson, Henry	laborer	28	6	m f	13
899	Kayes, George E	laborer	24	4	m f	6
975	Lotton, James	laborer	24	5	m f	11
979	Lotton, John	laborer	25	5	m f	11
992	Littlejohn, Isaac	farmer	25	5	m f	11
1239	Neal, William	laborer	19	6	m f	11
1245	Neal, Lawrence	laborer	19	6	m f	11
1247	Neal, Thomas	laborer	21	6	m f	11
1364	Pugh, Thos L	farmer	26	4	m f	8
1591	Sykes, Samuel	laborer	23	5	m f	8
1618	Saunderson, Wm	laborer	26	5	m f	11

Voters' List for 1897.

—: Municipality of the —:

Township of Pickering,

Polling Sub-Division No. 9.

Comprising all the Lots from No. 29 to No. 35 inclusive, from the Fourth Concession Line to the Seventh Concession Line.

PART I.—List of persons entitled to vote at both Municipal Elections and Elections to the Legislative Assembly.

NO. ON ROLL.	NAME.	JUROR	OCCUPATION	LOT	CON	QUALIFICATION	P. O.	
87	Annis, David (see d 8)	j	farmer	31	5	f	m f	8
2069	Armstrong, Alex	j	sadler	31	5	f	m f	8
143	Beare, John S	j	farmer	35	4	f	m f	7
158	Besse, John H	j	hotelkeeper	31	4	f	m f	8
159	Besse, W S	j	hotelkeeper	31	4	f	m f	8
174	Bell, John J		farmer	35	5	f	m f	12
175	Barton, Isaac		laborer	29	5	f	m f	12
177	Bice, John	j	carpenter	35	5	f	m f	12
188	Bice, Elias	j	farmer	34	6	t	m f	12
189	Bice, Nelson		farmer	33	6	f	m f	12
190	Booth, William		laborer	29	6	t	m f	12
192	Barton, Wm R	j	smith	34	6	f	m f	12
194	Barton, Richard	j	butcher	35	6	t	m f	12
200	Barnes, Wm G		farmer	33	6	f	m f	12
202	Burgess, Francis		farmer	35	5	f	m f	12
2070	Burton, Israel		carpenter	31	5	f	m f	8
2071	Burton, Frank S	j	carpenter	31	5	f	m f	8
2072	Beare, Thomas		merchant	31	5	f	m f	8
2074	Beaton, D R		tp clerk	31	5	t	m f	8

POLLING SUB DIVISION NO. 9.

71

NO. ON ROLL.	NAME.	JUROR	OCCUPATION	LOT	CON	QUALIFICATION.	P. O.
2076	Burton, Thomas		farmer	30	5	f	m f 8
2077	Burkholder, John		laborer	31	5	t	m f 8
2078	Burkholder, George		laborer	31	5	t	m f 8
2080	Carter, George	j	farmer	32	4	t	m f 8
2081	Carter, Thos (see d 5 8)		gentleman	32	4	f	m f 8
2088	Chapman, John		laborer	31	4	t	m f 8
422	Doten, Joseph		manufac'er	34	5	t	m f 12
424	Dafoe, Robert		thresher	33	5	t	m f 12
435	Doten, Sanford		laborer	33	6	t	m f 12
2082	Degeer, Simon		laborer	32	5	t	m f 8
481	Elhs, Thomas	j	merchant	34	6	t	m f 12
2084	Ellison, B A	j	smith	32	4	f	m f 8
519	Ferrier, O P		farmer	34	5	f	m f 12
520	Ferrier, George	j	farmer	34	5	f s	m f 12
525	Fuller, W A	j	merchant	34	6	f	m f 12
526	Forster, Clarence		turner	33	6	t	m f 12
532	Fowler, James		turner	33	6	t	m f 12
2091	Fenton, Daniel		laborer	32	4	t	m f 8
2094	Gercw, W G	j	smith	31	5	f	m f 8
738	Hamilton, James		butcher	31	4	f	m f 8
742	Hodgson, Charles	j	farmer	29	4	f	m f 8
761	Hagerman, Theophilus	j	farmer	34	5	f	m f 8
762	Hagerman, Wheaton A	j	farmer	35	5	t	m f 8
769	Hoover, Daniel	j	farmer	35	6	t	m f 12
770	Hoover, Walter F	j	farmer	35	6	t	m f 12
775	Hoover, P R		miller	34	6	f	m f 12
776	Hoover, Alphaus		miller	34	6	f	m f 12
777	Hoover, William		miller	34	6	f	m f 12
778	Hopkins, Henry	j	V S	33	6	f	m f 12
2107	Hutchison, J C		physician	32	4	t	m f 8
906	King, John		laborer	31	5	f	m f 12
910	Kirton, John	j	farmer	31	4	t	m f 7
977	Long, Henry		laborer	32	4	f	m f 8

NO. ON ROLL	NAME.	JUROR	OCCUPATION	LOT	CON	QUALIFICATION	P. O.	
985	Larkin, John	j	farmer	33	4	f	m f	8
2097	Liddell, James		laborer	32	4	f	m f	8
2127	Lount, Wm E	j	manufac'er	31	5	f	m f	8
2101	Lynde, S B		agent	31	5	t	m f	9
2110	Long, James		laborer	31	5	f	m f	8
1122	Major, A E (see d 8)	j	farmer	29	4	f	m f	8
1123	Major, W S (see d 8)	j	farmer	30	4	t	m f	8
1153	Moore, John jr	j	farmer	30	5	t	m f	8
1154	Moore, John		farmer	30	5	t	m f	8
1165	Milne, Robert	j	farmer	30	6	f	m f	12
1166	Milne, George D	j	farmer	30	6	f	m f	12
1167	Milne, Walter B	j	farmer	30	6	f	m f	12
1170	McIntyre, Thomas		farmer	31	5	f	m f	12
1171	Morgan, John (see d 8)	j	farmer	29	6	t	m f	12
1175	Moore, Peter		laborer	31	6	t	m f	12
1177	Michell, John H	j	farmer	31	6	t	m f	12
771	McNeeley, Joseph		farmer	35	6	f	m f	12
1704	Moyer, Isaac A		farmer	31	f	f	m f	7
2103	Miller, William	j	gentleman	32	4	f	m f	8
1624	Maggs, James		farmer	35	6	f	m f	12
1232	Nowlan, Thos (see d 2 3)	j	farmer	32	4	f	m f	8
1233	Nowlan, Jas (see d 2 3)	j	farmer	32	4	f	m f	8
1234	Nowlan, Robt (see d 2 3)	j	farmer	32	4	f	m f	8
1240	Nighswander, Eli		millor	35	6	f	m f	12
2105	Oke, John H		clergyman	32	4	t	m f	8
1373	Postill, Thomas	j	farmer	34	5	f	m f	12
1388	Paul, James		farmer	30	6	f	m f	12
1403	Postill, Francis	j	farmer	35	6	f s	m f	12
1404	Pennock, William		laborer	32	6	t	m f	12
2125	Pennock, Joseph		shaper	30	5	t	m f	8
2115	Pennock, S R		undertaker	31	5	f	m f	8
2114	Pallister, William		farmer	31	5	f	m f	8
2111	Pherrill, Stewart		laborer	31	4	t	m f	8

POLLING SUB DIVISION NO. 9.

73

NO. ON ROLL.	NAME.	JUROR	OCCUPATION	LOT	CON	QUALIFICATION.	P. O.
1461	Rae, James		shoemaker	31	4	f m f	8
1470	Reesor, Samuel G		thresher	34	4	f m f	8
1489	Robinson, Peter J		diteber	35	6	t m f	12
2116	Rose, James		tailor	31	4	f m f	8
2117	Reesor, Chas C	j	farmer	31	5	f m f	8
1597	Stover, Menno	j	farmer	34	4	t m f	7
1599	Smith, Wm L	i	farmer	35	5	t m f	8
1619	Shank, William		laborer	29	5	t m f	12
1625	Spence, Samuel		laborer	34	6	f m f	12
2119	Smith, W H		mason	31	5	t m f	8
2121	Siple, M E		clergyman	31	4	t m f	8
2130	Smith, W H jr		mason	32	4	f m f	8
2124	Thornton, Edward	j	farmer	32	4	t m f	8
1699	Tweedie, Robt	j	farmer	35	4	t m f	8
1713	Turner, David S	j	farmer	29	5	f m f	8
1714	Turner, Jacob (see d 8)	j	farmer	29	5	t m f	8
1725	Turner, Marshall	j	farmer	33	6	t m f	12
2129	Tran, George		gentleman	32	4	f m f	8
2135	Taylor, Jas (see d 5)		merchant	31	5	f m f	8
1690	Thornton, James	j	farmer	31	5	f m f	8
1691	Thornton, A E	j	farmer	31	5	f m f	8
1692	Thornton, E A	j	farmer	31	5	f m f	8
1803	Wilson, Joseph		wright	31	4	f m f	8
1807	White, Thomas (see 8)	j	farmer	32	4	f m f	8
1816	White, T P		gentleman	32	5	t m f	8
1815	Wonch, J W	j	farmer	30	4	f m f	8
1817	Windsor, Norris		laborer	32	5	t m f	12
1818	Windsor, John		shoemaker	32	5	f m f	12
1819	Wilson, Fawcett	j	farmer	33	5	t m f	8
1820	Wilson, Eli	j	farmer	33	5	t m f	8
1821	Wilson, Benson	j	farmer	33	5	t m f	12
1822	Wilson, John		farmer	33	5	f m f	8
2131	Windsor, Silas		shoemaker	31	5	f m f	8
2137	Weese, W O		millar	32	4	t m f	8
2133	Wetherill, H A		wright	32	4	t m f	8
1899	Young, Uriah	j	farmer	33	6	f m f	12

Voters' List for 1897.

—: Municipality of the —:

Township of Pickering,

Polling Sub-Division No. 9.

Comprising all the Lots from No. 29 to No. 35 inclusive, from the Fourth Concession Line to the Seventh Concession Line.

PART II—List of persons entitled to vote at Municipal Elections only.

NO. ON ROLL.	NAME.	JUROR	OCCUPATION	LOT	CON	QUALIFICATION	P. O.
176	Burton, William		farmer	35	5	f	12
210	Burk, W H		farmer	30	5	f	12
2073	Besse, Mrs E		widow	34	5	f	
2019	Burkholder, Ezra			31	5	f	
2134	Ball, James			31	5	f	
763	Button, William		gentleman	35	5	f	21
1600	Bannerman, Geo			35	5	f	
1620	Beierl, Chas (see d 8)			29	5	f	27
911	Beaton, Mrs H		widow	32	4	f	29
912	Beaton, J S		merchant	32	4	f	30
913	Beaton, Hector			32	4	f	29
914	Beaton, F A			32	4	f	29
2086	Cooper, Levi			31	4	f	
195	Dunsheath, W S			35	6	f	
436	Doten, Mrs N		widow	33	6	f	12
2090	Dunbar, F J		barrister	31	4	f	29
2138	Delong, Albert			32	4	f	18
2108	Hollinger, Wm (see 5)		farmer	32	4	f	7
2098	Hilts, Alexander		farmer	32	4	f	

POLLING SUB DIVISION NO 9.

75

NO. ON ROLL.	NAME.	JUROR.	OCCUPATION	LOT	CON	QUALIFICATION	P. O.
1900	Jardine, David			31	5	f	
978	Long, William			32	4	f	8
1124	Major, H H (see d 8)		V S	29	5	f	8
1172	Morgan, Alex (see d 8)		farmer	29	6	f	15
1178	Michell, A T		gentleman	31	6	f	28
2104	Miller, Mrs		widow	32	4	f	8
425	Nighswander, D B		merchant	33	5	f	21
2102	Peck, Mrs		widow	31	5	f	
1402	Postill, Mrs Ellen		widow	35	6	f	12
2113	Pallister, Mrs (see d 5)		widow	31	5	f	8
1598	Rcesor, Christian		farmer	34	4	f	26
1700	Reesor, E A			35	4	f	
	Stephenson, James			35	5	f	21
1623	Searles, Elizabeth		widow	35	6	f	12
1632	Stewart, Peter		farmer	31	6	f	18
2075	Thompson, Dr			31	5	f	29
1715	Turner, John H			29	5	f	
1808	White, Wm (see d 8)		farmer	32	4	f	8
2109	White, Jas (see d 8)		farmer	31	5	f	8
1155	Ward, Thomas		teacher	30	5	f	29

*

arth

6
P.
12
12
21
27
29
30
29
29
12
29
18
7

Voters' List for 1897.

—: Municipality of the —:

Township of Pickering,

Polling Sub Division No. 9.

Comprising all the Lots from No. 29 to No. 35 inclusive, from the Fourth Concession Line to the Seventh Concession Line.

PART III.—List of Persons entitled to vote at Elections to the LEGISLATIVE ASSEMBLY only.

NO. ON ROLL.	NAME.	JUROR.	OCCUPATION	LOT	CON	QUALIFICATION.	P. O.
2087	Burkholder, Wesley		tailor	31	4	m f	8
341	Carter, John		laborer	35	4	m f	8
348	Crayford, Roland		laborer	31	6	m f	12
449	Dunlop, Alexander		laborer	33	6	m f	12
508	Fretz, M C		farmer	34	4	m f	8
531	Flumerfeldt, Mason		teacher	29	5	m f	12
748	Hutchings, Wm		laborer	34	5	m f	12
768	Hawkins, Roger		laborer	33	5	m f	12
2095	Hilts, William		laborer	31	4	m f	8
2096	Hilts, Stephen		laborer	31	4	m f	8
976	Lehman, Chester		painter	33	4	m f	8
999	Lott, John		carpenter	32	5	m f	12
1187	Murray, John		laborer	31	5	m f	12
1389	Postill, Frederick		auctioneer	34	5	m f	12
1575	Stover, Levi		laborer	33	4	m f	8
1730	Tomlinson, William		laborer	29	5	m f	12
1756	Vardon, Robert		gentleman	31	4	m f	6
1832	Windsor, John jr		laborer	31	5	m f	12
1853	Wolfe, Cornelius		laborer	31	6	m f	13
2123	White, Benj F		laborer	32	4	m f	8
2132	Waite, R M		book keeper	30	5	m f	8
2133	Weir, Frank		millor	31	4	m f	8

Voters' List for 1897.

—: Municipality of the —:

Township of Pickering,

Polling Sub-Division No. 10.

Comprising all the Lots from No. 1 to No. 14 inclusive, from the Seventh Concession Line to the Northern Townline.

PART I.—List of persons entitled to vote at both Municipal Elections and Elections to the Legislative Assembly.

NO. ON ROLL.	NAME.	JUROR.	OCCUPATION	LOT	CON	QUALIFICATION.	P. O.
14	Anson, John	j	farmer	1	9	f	m f 16
52	Arbuckle, Wm		laborer	5	9	t	m f 16
55	Allbright, James		laborer	10	9	t	m f 16
208	Birrell, Davia	j	farmer	9	7	f	m f 10
204	Birrell, Robt A	j	farmer	9	7	f	m f 10
209	Boyer, Abram		farmer	12	7	f	m f 10
225	Balsdon, John I	j	farmer	1	8	t	m f 16
234	Baxter, Arthur		laborer	4	8	t	m f 16
364	Coultis, Wm H	j	farmer	2	7	t	m f 16
365	Coultis, George		farmer	2	7	f	m f 16
371	Corner, William	j	farmer	2	7	t	m f 9
375	Cochrane, James	j	farmer	10	8	t	m f 15
376	Cochrane, William		farmer	10	8	f	m f 15
388	Coates, Wm H	j	farmer	11	9	t	m f 15
438	Disney, C W	j	farmer	6	7	f	m f 16
439	Disney, John W	j	farmer	6	7	f	m f 16
444	Disney, John E	j	merchant	4	8	t	m f 16
450	Davidson, James I		farmer	1	8	f	m f 16
451	Davidson, Jas I jr	j		1	8	f	m f 16

NO. ON KOLL	NAME.	JUROR	OCCUPATION	LOT	CON	QUALIFICATION.	5 2
454	Dunn, John W	j	farmer	3	7	t	m f 16
457	Disney, Samuel	j	farmer	6	7	t	m f 16
460	Diamond, Peter	j	farmer	14	9	t	m f 15
471	Everett, William	j	smith	4	8	f	m f 16
472	Edwards, Wm (see d 6)	j	farmer	5	8	f	m f 16
476	Evans, James jr	j	farmer	13	18	t	m f 15
477	Evans, Edwin W jr	j	farmer	13	8	t	m f 15
478	Evans, James	j	farmer	18	6	f	m f 15
285	Ellis, Abraham		agent	4	8	t	m f 16
588	Florence, Charles		millor	8	8	t	m f 15
634	Gosling, Thomas	j	farmer	14	7	f	m f 15
645	Gosling, John	j	farmer	13	8	f	m f 15
663	Gilroy, George		laborer	14	9	t	m f 15
784	Harbron, William		farmer	5	7	f	m f 9
785	Harbron, Frederick	j	farmer	5	7	f	m f 9
786	Harbron, George	j	farmer	5	7	f	m f 9
787	Harbron, Wm J	j	farmer	5	7	f	m f 9
797	Hortop, James	j	farmer	8	8	t	m f 16
816	Holden, S J		farmer	9	9	f	m f 16
817	Holden, Albert B	j	farmer	9	9	f	m f 16
818	Holden, Arthur F	j	farmer	9	9	f	m f 16
846	Jones, John E		farmer	5	7	f	m f 16
847	Jones, Joseph W	j	farmer	5	7	f	m f 16
848	Jones, Frank E	j	farmer	4	7	t	m f 16
851	Jones, Wm H	j	farmer	3	8	t	m f 16
854	Jones, Henry	j	farmer	7	7	t	m f 16
855	Jones, John C (see d 6)		farmer	7	7	f	m f 16
856	Jones, Wm F	j	farmer	8	7	t	m f 16
861	Jones, John R		laborer	4	8	t	m f 16
863	Jones, John A	j	farmer	3	8	t	m f 16
865	Jones, William P	j	farmer	5	8	f	m f 16
867	Johnston, Arthur (see 1)	i	labrcer	11	7	f	m f 10
868	Jones, Samuel	j	farmer	6	8	f	m f 16

POLLING SUB-DIVISION NO. 10.

79

NO. ON ROLL.	NAME.	JUROR.	OCCUPATION	LOT	CON	QUALIFICATION	P. O.
f 16	872 Jones, David	j	farmer	8	8	t	m f 16
f 16	874 Jones, Joseph M	j	farmer	4	9	t	m f 16
f 15	876 Johnston, George	j	farmer	10	7	t	m f 16
f 16	1008 Linton, Brian		laborer	12	8	t	m f 15
f 16	1011 Lee, Thomas		laborer	9	8	t	m f 15
f 15	1018 Linton, William	j	farmer	18	8	f	m f 15
f 15	1179 McAvoy, R W	j	farmer	3	7	f	m f 9
f 15	1180 Mowbray, R W	j	farmer	4	7	t	m f 9
f 16	1181 Mowbray, Hugh		farmer	4	7	f	m f 9
f 15	1182 Middleton, Geo jr	j	farmer	13	7	t	m f 15
f 15	1183 Middleton, William	j	farmer	13	7	t	m f 15
f 15	1184 Middleton, George		farmer	13	7	f	m f 15
f 15	1185 McAvoy, T C	j	farmer	8	7	f	m f 16
f 9	1188 Moore, John	j	farmer	8	8	t	m f 16
f 9	1198 Marnien, George		laborer	2	8	t	m f 16
f 9	1200 Madill, Jas B (see d 7)	j	farmer	14	7	t	m f 11
f 9	1204 McAvoy, John D	j	farmer	6	8	f	m f 16
f 16	1216 Mutch, George	j	farmer	4	8	t	m f 16
f 16	1408 Pugh, David E	j	farmer	9	8	f	m f 15
f 16	1412 Proctor, Charles		farmer	11	8	f	m f 15
f 16	1413 Proctor, Onas jr	j	farmer	11	8	f s	m f 15
f 16	1414 Philp, Wesley J		postmaster	4	9	t	m f 16
f 16	1422 Pugh, Armand	j	farmer	12	9	f	m f 15
f 16	1425 Pilkey, David	j	farmer	3	9	t	m f 16
f 16	1637 Scott, William, G	j	farmer	12	8	f	m f 15
f 16	1654 Smith, James		laborer	8	8	f	m f 16
f 15	1655 Sadler, J W	j	farmer	9	9	t	m f 16
f 16	1734 Taun, George	j	farmer	12	8	f	m f 15
f 16	1735 Taun, Richard	j	farmer	12	8	f	m f 15
f 16	1848 Wilson, C J		farmer	13	7	t	m f 10
f 16	1851 Wilson, James S	j	farmer	1	7	t	m f 16
f 10	1852 Wilson, Thomas		farmer	1	7	f	m f 16
f 16	1860 Wilkin, James	j	farmer	1	8	t	m f 16

POLLING SUB-DIVISION NO. 10.

NO. ON ROLL.	NAME.	JUROR.	OCCUPATION	LOT.	CON	QUALIFICATION	R.
1866	Williams, William		farmer	7	9	f	m f 16
1876	Wilson, Richard	j	farmer	4	8	f	m f 16
1877	Wilson, George T	j	farmer	4	8	f	m f 16
1878	Wilson, Richard W	j	farmer	4	8	f	m f 16
1890	Ward, Richard	j	farmer	4	9	f	m f 16
1891	Ward, Jutson	j	farmer	4	9	f	m f 16
1891	Ward, R W	J	farmer	4	9	f	m f 16
1898	Wilson, John		laborer	12	9	t	m f 15

Voters' List for 1897.

—: Municipality of the —:

Township of Pickering,

Polling Sub-Division No. 10.

Comprising all the Lots from No. 1 to No. 14 inclusive, from the Seventh Concession Line to the Northern Townline.

PART II—List of persons entitled to vote at Municipal Elections only.

NO. ON ROLL	NAME.	JUROR.	OCCUPATION	LOT	CON	QUALIFICATION.	5 2
877	Birrell, James		gentleman	10	7	f	29
1202	Boyer, Ira D (see d 7)		musician	14	7	f	15
1415	Blackburn, Enos			4	9	f	33
455	Collius, Mrs J		widow	3	7	f	17
461	Evans, Ed W		farmer	14	9	f	15
1201	Ensign, Mrs Van (see 7)		widow	14	7	f	15
372	Gold, W S (see d 1 6)		gentleman	2	7	f	17
608	Garland, Robt (see d 5)		farmer	8	9	f	7
609	Garland, John (see d 5)		farmer	8	9	f	7
610	Garland, James (see d 5)		farmer	8	9	f	7
611	Garland, Robt jr (see 5)		farmer	8	9	f	7
864	Gold, Matt (see d 6)		clergyman	3	8	f	17
458	Hubbard, A			6	7	f	33
1656	Hunt, Alfred			6	9	f	
852	Jones, Mrs J L		widow	2	9	f	
866	Jones, Samuel		gentleman	7	8	f	17
227	Mitchell Joseph			1	8	f	17
875	Pugh, Mrs Thos		widow	4	9	f	19
1420	Pugh, Edward E		farmer	9	9	f	15

NO. ON ROLL.	NAME.	JUROR.	OCCUPATION	LOT.	CON	QUALIFICATION	P. O.
1421	Pugh, David		farmer	9	9	f	15
1427	Pugh, Thomas E.		farmer	13	9	f	15
1652	Spencer, Robert		farmer	1	9	f	19
1653	Spencer, Uriah		farmer	1	9	f	19
226	Thompson, John			1	8	f	17
1748	Trew, Mr			10	8	f	
236	White, Thomas			4	8	f	
389	Waddell, Alexander		gentleman	11	9	f	23
1217	Ward, William		gentleman	4	8	f	33
1428	Warville, Mrs		widow	8	8	f	
1861	Wilkin, Alexander		gentleman	1	8	f	15

Voters' List for 1897.

—: Municipality of the —:

Township of Pickering,

Polling Sub-Division No. 10.

Comprising all the Lots from No. 1 to No. 14 inclusive, from the Seventh Concession Line to the Northern Townline.

PART III.—List of Persons entitled to vote at Elections to the LEGISLATIVE ASSEMBLY only.

NO. ON ROLL	NAME.	JUROR.	OCCUPATION	LOT	CON	QUALIFICATION.	6 a
50	Anderson, Arthur		laborer	4	9	m f	16
205	Bushby, William		laborer	9	7	m f	10
281	Bushby, John		laborer	10	9	m f	15
374	Crayford, William		laborer	11	7	m f	10
487	Dwyer, Edward		laborer	12	7	m f	10
1017	Linton, Bryan jr		laborer	12	9	m f	15
1023	Lee, George		laborer	11	8	m f	15
1207	Mantle, Edward		laborer	13	9	m f	15
1213	Madill, Albert		laborer	11	7	m f	10
1214	Madill, Joseph H		laborer	14	7	m f	11
1491	Rivis, Thomas		laborer	10	7	m f	10
1494	Robertson, Alex		laborer	6	9	m f	16
1501	Robertson, George		laborer	1	9	m f	16
1647	Smith, Charles		teacher	1	8	m f	16
1738	Thompson, Robt		laborer	1	8	m f	16
1895	Wilson, Andrew		laborer	12	9	m f	15
1896	Wilson, Frederick		laborer	12	9	m f	15
1897	Waddell, William		laborer	11	9	m f	15

Voters' List for 1897.

—: Municipality of the —:

Township of Pickering,

Polling Sub-Division No. 11.

Comprising all the Lots from No. 15 to No. 22 inclusive, from the Seventh Concession Line to the Northern Townline.

PART I.—List of persons entitled to vote at both Municipal Elections and Elections to the Legislative Assembly.

NO. ON ROLL.	NAME.	JUROR.	OCCUPATION	LOT	CON	QUALIFICATION.	P. O.
2210	Astridge, George		jeweller	18	9	t	m f 15
2216	Anderson, William		mason	19	9	f	m f 15
2226	Anderson, James	j	teamster	19	9	f	m f 15
222	Beelby, Matthew	j	farmer	20	8	f	m f 15
223	Beelby, Kirk	j	farmer	20	8	f s	m f 15
2217	Bundy, William	j	tinsmith	18	9	f	m f 15
2219	Bundy, Joshua	j	gentleman	19	9	f	m f 15
2224	Burgess, George		gentleman	18	9	f	m f 15
2225	Bray, Samuel		gentleman	18	8	f	m f 15
2227	Brodie, George M		ph. sician	18	9	t	m f 15
2229	Bundy, George		undertaker	19	9	f	m f 15
2231	Brodie, Chas J		V S	18	8	f	m f 15
2236	Burton, Nicholas	j	sadler	19	9	f	m f 15
2240	Boyer, Ira D (see 7 10)	j	musician	18	8	f	m f 15
2241	Baynard, George	j	laborer	18	9	f	m f 15
233	Bundy, Abram		painter	18	9	f	m f 15
543	Barry, John (see d 8)		gentleman	18	9	f	m f 15
386	Cooper, George	j	farmer	22	9	f	m f 15
2243	Campbell, Robert		R R .	18	9	t	m f 15

POLLING SUB DIVISION NO 11.

85

NO. ON ROLL.	NAME.	JUROR.	OCCUPATION	LOT	CON	QUALIFICATION	o a
2247	Collins, Joseph		laborer	18	9	t	m f 15
2261	Caster, Tobias	j	gr dealer	19	9	f	m f 15
2249	Dowswell, William	j	wright	19	9	f	m f 15
2251	Dunn, Thomas		conyey'cer	18	9	f	m f 15
2371	Derusha, Edward		gentleman	18	9	f	m f 15
479	Evans, Josiah	i	farmer	16	9	f	m f 15
2220	Evans, Ed W (see d 10)		farmer	18	8	t	m f 15
2264	Evans, Rolph	j	farmer	18	9	f	m f 15
2266	Eastwood, W F		physician	18	8	f	m f 15
528	Forsyth, Daniel	j	farmer	17	8	f	m f 15
529	Forsyth, Malcolm	j	farmer	17	8	f	m f 15
536	Forgie, John jr	j	farmer	19	9	t	m f 15
537	Forgie, John		farmer	19	9	f	m f 15
542	Forsyth, J D (see d 8)	j	farmer	18	9	t	m f 15
2267	Farmer, Frederick		tailor	18	9	f	m f 15
2268	Forsyth, Caleb		teamster	18	9	t	m f 15
2269	Forsyth, Elias		laborer	18	9	t	m f 15
2271	Found, Henry		mason	18	9	f	m f 15
2272	Farmer, John S	j	shoemaker	18	9	f	m f 15
635	Graham, John		farmer	15	8	f	m f 15
642	Gibson, William	j	farmer	15	7	f	m f 15
2274	Gibson, John	j	farmer	18	9	f	m f 15
644	Gibson, Edward		farmer	15	7	f	m f 15
652	Graham, Thos O	j	farmer	22	8	t	m f 15
654	Graham, John		farmer	15	8	t	m f 15
659	Gibson, William		laborer	21	8	t	m f 15
669	Gregg, Joseph		gentleman	18	9	f	m f 15
2275	Gerow, George		manufac'er	18	9	f	m f 15
2276	Gerow, John	j	manufac'er	18	9	f	m f 15
2281	Graham, W J	j	smith	19	9	t	m f 15
2284	Gibbons, Thomas	j	merchant	19	9	f	m f 15
2285	Green, Thomas		laborer	18	9	f	m f 15
2200	Graham, John W		liveryman	18	9	f	m f 15

*

nth

Elec.

o
a

15
15

15
15

15
15

15
15

15
15

15
15

15
15

15
15

15
15

15

NO. ON ROLL.	NAME.	JUROR	OCCUPATION	LOT	CON	QUALIFICATION	3 2
2702	Gibson, James	j	laborer	18	9	t	m f 15
798	Harvey, James		smith	18	9	t	m f 15
800	Hood, William	j	farmer	20	7	f	m f 15
808	Henry, William	j	merchant	18	9	t	m f 15
819	Hardy, Wesley	j	laborer	18	9	t	m f 15
2279	Howe, John		carpenter	18	9	t	m f 15
2287	Hopper, R P	j	gentleman	18	9	f	m f 15
2288	Henderson, Magnus	j	shoemaker	18	9	f	m f 15
2290	Hutchison, Foster	j	agent	19	9	f	m f 15
2292	Hopper, David	j	merchant	19	8	t	m f 15
2294	Hickingbottom, Andrew		laborer	18	9	t	m f 15
2296	Hamilton, Andrew	j	gentleman	19	8	f	m f 15
2298	Jobbitt, James H	j	shoemaker	18	9	f	m f 15
1009	Lawrence, Paul		gentleman	19	8	t	m f 15
1006	Linton, William		laborer	17	8	t	m f 15
2310	Leaper, William	j	carpenter	18	8	f	m f 15
2316	Leggitt, James		R R	19	9	t	m f 15
2321	Leggitt, Thomas		clergyman	18	9	t	m f 15
2347	Law, Joseph		gentleman	18	9	f	m f 15
1186	Madill, James H	j	farmer	19	7	f	m f 11
1190	Miller, John (see d 7)		farmer	17	7	f	m f 11
1193	Miller, John jr (see d 7)	j	farmer	17	7	f	m f 11
1194	Miller, George (see d 7)	j	farmer	17	7	f	m f 11
1195	Miller, Andrew (see d 7)	j	farmer	17	7	f	m f 11
1196	Madill, Henry (see d 8)		farmer	20	7	f	m f 11
1197	Madill, Sylvanus (see 8)	j	farmer	20	7	f	m f 11
1202	Michell, Tobias	j	farmer	18	8	f	m f 15
2334	Michell, Henry D		gentleman	17	8	t	m f 15
1218	McFarlane, James	j	farmer	20	9	f	m f 15
1227	Morgan, George G	j	farmer	19	9	f	m f 15
2324	Middleton, Charles		gentleman	18	8	f	m f 15
2325	Macnab, John M		postmaster	18	8	f	m f 15
2326	Macnab, Duncan		merchant	18	8	f	m f 15

POLLING SUB DIVISION NO. 11

87

NO. ON ROLL.	NAME.	JUROR.	OCCUPATION	LOT	CON	QUALIFICATION.	5
2327	Macnab, Peter	j	clerk	18	9	f	m f 15
2329	Macnab, Charles	j	clerk	19	9	f	m f 15
2330	Macnab, Peter jr	j		19	9	f	m f 15
2331	Morgan, Alex (see 8 9)		farmer	18	9	f	m f 15
2332	Michell, Wm J	j	farmer	19	8	f	m f 15
2333	Michell, Chas A	j	farmer	19	8	f	m f 15
2335	Mantle, John F		laborer	19	9	f	m f 15
1409	Pilkey, Joseph	j	farmer	17	8	f	m f 15
1410	Pilkey, Luther	j	farmer	18	7	f	m f 15
1411	Pilkey, Lyman J	j	farmer	17	8	f	m f 15
1416	Pugh, Price		farmer	22	9	f	m f 15
1420	Pugh, E E (see d 10)	j	farmer	18	7	f	m f 15
1421	Pugh, David (see d 10)		farmer	18	7	f	m f 15
1423	Powrie, David		R R	18	9	t	m f 15
1427	Pugh, Thos E (see d 10)	j	farmer	18	9	f	m f 15
2337	Palmer, B S		shoemaker	19	9	f	m f 15
2339	Powell, W H		farmer	18	9	t	m f 15
2341	Powell, Ira	j	agent	19	9	f	m f 15
2342	Patterson, Thomas	j	carpenter	18	9	t	m f 15
1485	Russell, David	j	farmer	15	7	t	m f 11
1487	Russell, John	j	farmer	15	7	f	m f 11
1488	Russell, Duncan	j	farmer	15	7	f	m f 11
1492	Rumohr, Peter		butcher	19	8	f	m f 15
1502	Reid, John		farmer	18	9	f	m f 15
1503	Rawson, Albert	j	mason	19	9	f	m f 15
2345	Roberts, Henry		R R	19	9	f	m f 15
2352	Rawson, Reubin	j	carpenter	19	9	f	m f 15
2353	Rumohr, Sherman E	j	butcher	18	8	t	m f 15
2355	Rawson, W W		tailor	19	9	t	m f 15
1636	Scott, William		farmer	21	8	f	m f 15
1639	Slack, Albert	j	farmer	22	7	t	m f 15
1641	Sadler, Robert		gentleman	18	9	f	m f 15
1642	Slack, Joseph	j	farmer	19	9	t	m f 15

NO. ON ROLL.	NAME.	JUROR.	OCCUPATION	LOT	CON	QUALIFICATION	P. O.
1651	Soden, Francis	j	farmer	16	8	f	m f 15
2316	Spofford, Frank	j	farmer	18	9	f	m f 15
2350	Sharrard, Amos	j	carpenter	18	8	t	ra f 15
2357	Stokes, George		farmer	18	8	f	m f 15
2258	Shepherdson, William	j	laborer	18	9	t	m f 15
1737	Tracy, Alfred		farmer	18	9	f	m f 15
1742	Tarr, Nathan	j	baker	19	9	f	m f 15
2359	Thomson, Henry	j	smith	18	9	f	m f 15
1749	Underhill, James	j	farmer	19	8	t	m f 15
1750	Underhill, John	j	farmer	19	8	t	m f 15
1751	Underhill, Robt (see 8)		farmer	19	8	f	m f 15
1744	Underhill, John	j	farmer	21	9	t	m f 15
1792	Wright, Fredk (see 8)	j	farmer	20	7	t	m f 11
1854	Wilson, Thomas	j	farmer	20	7	f	m f 11
1855	Wilson, W T	j	farmer	20	7	f s	m f 11
2362	Wilkin, Alex (see 10)		gentleman	18	8	t	m f 15
2363	Wilkin, George		farmer	18	8	t	m f 15
2368	Ward, Robt W	j	manufac'er	18	9	f	m f 15
2370	Wilson, Alexander	j	hotelkeeper	18	9	t	m f 15
2372	White, Alexander		clergyman	18	9	t	m f 15
2361	Young, William		gentleman	19	9	f	m f 15



Compt

P

NO. ON ROLL

2232

2233

2209

2245

2248

2246

655

2288

2340

2259

459

2252

2253

2254

460

2265

2268

535

2218

Voters' List for 1897.

—: Municipality of the —:

Township of Pickering,

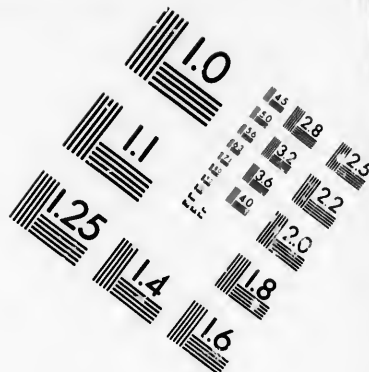
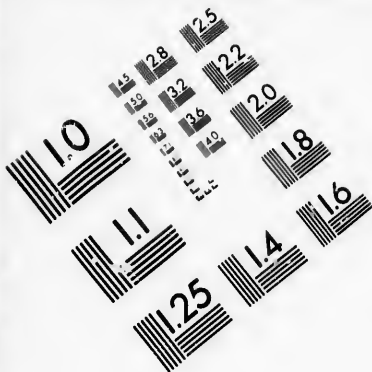
Polling Sub-Division No. 11.

Comprising all the Lots from No. 15 to No. 22 inclusive, from the Seventh Concession Line to the Northern Townline.

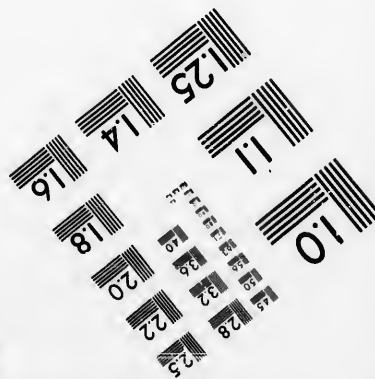
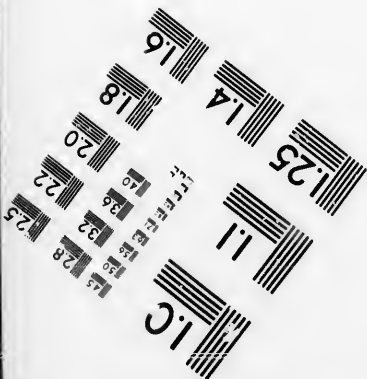
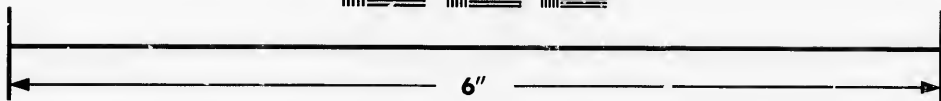
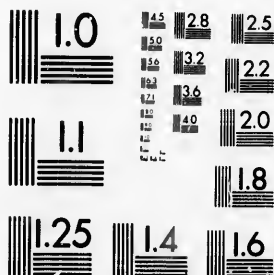
PART II—List of persons entitled to vote at Municipal Elections only.

NO. ON ROLL	NAME.	JUROR.	OCCUPATION	LOT	CON	QUALIFICATION.	P. O.
2232	Bell, Mary A		spinster	18	9	f	15
2233	Bell, Ruth		spinster	18	9	f	15
2209	Brown, Mrs M		widow	18	9	f	15
2245	Bundy, David			18	9	f	
2248	Birrell, Jas (see 10)			18	9	f	29
2246	Cowie, Robt D		farmer	18	8	f	13
655	Carson, Mrs M		widow	15	8	f	15
2283	Coates, Mrs		widow	19	9	f	
2340	Cunningham, Mrs		widow	18	9	f	
2259	Collins, Mrs		widow	18	9	f	
459	Diamond, Peter (see 1C)		farmer	15	9	t	15
2252	Dunn, Miss M		spinster	18	9	f	
2253	Dolphin, Mary Ann		widow	18	8	f	15
2254	Dolphin, Charles			18	8	f	
460	Evans, James (see 10)		farmer	15	9	f	15
2265	Evans, Melessea J		widow	18	9	f	15
2263	Edwards, Wm (see 6-10)		farmer	18	8	f	16
535	Found, Mrs		widow	18	9	f	15
2218	Gunn, Matilda		spinster	18	9	f	15





**IMAGE EVALUATION
TEST TARGET (MT-3)**



**Photographic
Sciences
Corporation**

23 WEST MAIN STREET
WEBSTER, N.Y. 14580
(716) 872-4503

15
16
18
20
22
25
28
32
36
40
45
48

50
55
60
65
70
75
80
85
90
95
100

NO. ON ROLL	NAME.	JUROR.	OCCUPATION.	LOT	CON	QUALIFICATION.	P. O.
634	Gosling, Thos (see 10)		farmer	15	8	f	15
647	Gibson, Mrs Wm		widow	19	8	f	15
672	Garbutt, Charles		farmer	18	9	f	83
678	Goode, Cephas			18	9	f	29
2286	Gentle, Henry			19	9	f	29
480	Hubbard, Duncan		teacher	16	9	f	
781	Hood, John jr (see d 8)		laborer	19	7	f	11
2312	Hyfield, Mrs J (see d 6)		widow	19	9	t	15
2297	Johnston, Thomas		tailor	18	9	f	29
2311	Linton, Mrs H		widow	18	8	f	15
2282	Murray, Mrs E		widow	18	9	f	
1191	Miller, James (see 7)		solicitor	17	7	f	
1192	Miller, Robt (see 7)		farmer	17	7	f	11
1219	McFarlane, David			20	9	f	29
1220	McFarlane, Agnes		spinster	20	9	f	29
1221	McFarlane, Walter			20	9	f	29
1222	McFarlane, Sarah		spinster	20	9	f	
1223	McFarlane, Mary		spinster	20	9	f	
2319	McDonald, Charles			18	9	f	29
2320	Milne, Mrs C		widow	18	8	f	15
1643	Michell, Chas V			19	9	f	29
1631	Mechin, Hugh (see 7 8)		merchant	19	7	f	11
653	Nesbitt, Robert			22	8	f	28
2342	Patterson, Mrs H		widow	18	9	f	15
1408	Pugh, D E (see d 10)		farmer	15	9	f	15
2336	Pallister, Margaret		widow	18	8	f	15
2388	Pickett, Margaret		widow	18	9	f	15
2344	Rawson, Martha		widow	19	9	f	15
2270	Slack, James		farmer	18	9	f	15
2318	Stokes, Mrs R		widow	19	9	f	15
2317	Scarr, Mrs		widow	19	9	t	
1680	Smith, Richard			19	7	t	
2348	Sharrard, Mrs R (see 8)		widow	18	9	f	15

POLLING SUB-DIVISION NO. 11.

91

NO. ON ROLL.	NAME.	JUROR.	OCCUPATION	LOT	CON	QUALIFICATION	P. O.
2295	Thomson, Thomas			18	9	f	88
1791	Wright, Robert (see 8)		farmer	20	7	t	11
1859	Wilson, Newrick (see 7)		farmer	22	7	f	11
1890	Ward, Richard (see 10)		farmer	15	8	f	16
1891	Ward, Jutson (see 10)		farmer	15	8	f	16
1892	Ward, B W (see 10)		farmer	15	8	f	16

Voters' List for 1897.

Municipality of the

Township of Pickering,

Polling Sub Division No. 11.

Comprising all the Lots from No. 15 to No. 22 inclusive, from the Seventh Concession Line to the Northern Townline.

PART III.—List of Persons entitled to vote at Elections to the LEGISLATIVE ASSEMBLY only.

NO. ON ROLL.	NAME.	JUROR.	OCCUPATION	LOT	CON	QUALIFICATION	6 a
49	Adamsen, Samuel		laborer	18	9	m f	15
54	Anderson, Samuel		laborer	19	8	m f	15
2222	Bundy, Judson		laborer	18	9	m f	15
2223	Bundy, J B		laborer	18	8	m f	15
2238	Bowes, Alexander		laborer	19	9	m f	15
2242	Bowes, Luther		clerk	18	8	m f	15
381	Carson, Wm J		laborer	15	8	m f	15
2257	Covington, William		laborer	18	9	m f	15
456	Day, Robt W		laborer	19	8	m f	15
2250	Dowswell, Frederick		carpenter	19	9	m f	15
2256	Dunn, Douglas		laborer	18	9	m f	15
2255	Dolphin, Duncan		laborer	18	8	m f	15
2230	Dowswell, Albert		smith	19	9	m f	15
541	Forsyth, Abijah		laborer	18	8	m f	15
544	Forsyth, Ellsworth		laborer	17	8	m f	15
2273	Forsyth, Thomas		laborer	18	9	m f	15
656	Graham, Thomas		laborer	15	8	m f	15
675	Garbutt, Charles jr		laborer	18	9	m f	15
807	Hutchinson, Robt		laborer	19	8	m f	15

POLLING SUB DIVISION NO. 11.

93

NO. ON ROLL.	NAME.	JUROR	OCCUPATION	LOT.	CON	QUALIFICATION	6
815	Hardy, Walter		laborer	18	9	m f	15
2291	Hughes, T B		st agent	18	9	m f	15
2301	Handrahan, Wm		barber	18	9	m f	15
2305	Howe, James E		carpenter	18	9	m f	15
2207	Kennedy, D W		tinsmith	19	9	m f	15
2299	King, Hay		contractor	18	9	m f	15
1018	Linton, Joseph		laborer	19	9	m f	15
1021	Lidgett, George		laborer	22	9	m f	15
2318	Linton, Joseph		laborer	19	9	m f	15
1228	Mantle, Albert		laborer	19	9	m f	15
1229	Mantle, Joseph		laborer	19	9	m f	15
1419	Pugh, Robert		laborer	22	9	m f	15
1429	Pluintree, Thomas		laborer	16	9	m f	15
1480	Rutledge, John		laborer	16	7	m f	11
1629	Smith, Albert		laborer	19	7	m f	15
1635	Smith, Arthur		laborer	19	7	m f	15
2349	Sharrard, Ira		laborer	19	9	m f	15
1789	Thompson, Joseph		laborer	18	9	m f	15
2365	Torrie, Arthur E		teacher	19	9	m f	15
2366	Thomson, William		smith	18	9	m f	15
2367	White, George		R R	21	9	m f	15
1902	Young, James		laborer	20	9	m f	15

*

th

VE

6

15

15

15

15

15

15

15

15

15

15

15

15

15

15

15

15

15

15

15

Voters' List for 1897.

— Municipality of the —

Township of Pickering,

Polling Sub-Division No. 12.

Comprising all the Lots from No. 23 to No. 95 inclusive, from the Seventh Concession Line to the Northern Townline.

PART I.—List of persons entitled to vote at both Municipal Elections and Elections to the Legislative Assembly.

NO. ON ROLL.	NAME.	JUROR	OCCUPATION	LOT	CON	QUALIFICATION	6
51	Alsop, Hiram	j	laborer	25	9	f	m f 14
196	Barkey, William	j	farmer	34	7	f	m f 12
197	Barkey, David		farmer	34	7	f	m f 12
210	Bark, W H (see 9)		farmer	30	7	f	m f 12
215	Burkholder, Solomon	j	farmer	29	8	f	m f 13
216	Burkholder, Menno	j	farmer	35	7	f	m f 22
218	Beelby, Frank	j	farmer	29	7	t	m f 15
220	Brander, William	i	farmer	29	7	t	m f 13
224	Byer, Henry	j	farmer	30	8	f	m f 13
229	Barkey, Wilmot	j	farmer	28	9	f	m f 14
230	Barkey, Daniel		farmer	28	9	f	m f 14
232	Bayles, John		farmer	32	9	t	m f 14
1732	Burkholder, David		farmer	31	7	f	m f 22
1393	Barkey, Anthony		farmer	33	7	f	m f 23
368	Cowie, William	j	farmer	26	7	f	m f 13
377	Cowie, Robt D (see 11)	j	farmer	27	7	t	m f 13
380	Conley, William		farmer	31	7	f	m f 13
383	Cliff, Lincoln	j	manufac'er	31	9	t	m f 14
384	Cliff, Edwin		manufac'er	31	9	t	m f 14

POLLING SUB-DIVISION NO 12.

95

NO. ON ROLL.	NAME.	JUROR.	OCCUPATION	LOT	CON.	QUALIFICATION	CLASS.
885	Coates, Geo W	j	farmer	28	9	f m f	15
882	Coultis, Wm J	j	farmer	24	8	f m f	15
441	Dunkeld, James	j	farmer	32	7	f m f	13
442	Dunkeld, William	j	farmer	32	7	f m f	13
448	Dunkeld, Thomas	j	farmer	32	7	f m f	13
452	Davis, Philip	j	farmer	81	8	f m f	14
488	Elford, Henry	j	farmer	24	9	t m f	15
540	Forsyth, Rolph	j	farmer	31	9	f m f	14
636	Gostick, Thos C	j	farmer	24	7	f m f	15
648	Gregg, Hugh jr	j	farmer	23	8	f m f	15
649	Gregg, Hugh	j	farmer	25	8	f m f	15
650	Gregg, David	j	farmer	25	8	f s m f	15
651	Gregg, Thomas	j	farmer	25	8	f s m f	15
658	Gigg, Joseph	j	laborer	85	8	f m f	22
661	Gourhe, William	j	farmer	25	9	t m f	15
665	Graham, Robert	j	farmer	23	9	f m f	15
666	Graham, Wm M	j	farmer	23	9	f m f	15
667	Graham, Thomas	j	V S	23	9	f m f	15
679	Giebner, Otto	j	farmer	35	8	t m f	22
1212	Gregg, W J	j	farmer	25	8	f m f	15
732	Hunter, Thos (see 8)	j	farmer	24	7	t m f	11
788	Hanson, James	j	laborer	29	7	f m f	13
790	Hoover, Samuel B	j	farmer	30	7	f m f	18
791	Hoover, Noah B	j	farmer	35	7	f m f	22
792	Hoover, John G	j	farmer	34	9	f m f	23
793	Hoover, Isaiah	j	farmer	34	9	f m f	23
794	Hoover, Joseph	j	farmer	34	9	f m f	23
805	Hoover, Simon R	j	farmer	33	8	f m f	14
806	Hoover, Albert	j	farmer	33	8	f m f	14
810	Hoover, Jacob B	j	farmer	34	8	f m f	14
811	Hoover, Elias B	j	farmer	34	8	f m f	14
812	Hoover, John R	j	farmer	32	8	f m f	14
813	Hoover, John A	j	farmer	28	9	f m f	14

NO. ON ROLL	NAME.	JUROR.	OCCUPATION	LOT	CON	QUALIFICATION.	AGE
870	Johnston, Michael	j	farmer	32	9	f m f	14
871	Johnston, Frederick	j	farmer	32	9	f m f	14
908	Kester, Enoch		farmer	29	9	t m f	14
909	Kester, Marshall		laborer	29	9	f m f	14
915	Kester, Lorn	j	farmer	35	9	f m f	23
916	Kirby, George	j	farmer	83	7	t m f	18
919	Kelly, George	j	laborer	26	9	t m f	14
1010	Lapp, Alexander	j	farmer	31	8	f m f	18
1014	Lapp, Seth		laborer	35	8	f m f	22
1015	Lehman; Abram B	j	farmer	35	8	f m f	22
1016	Lehman, Henry	j	farmer	35	8	f m f	22
1019	Lehman; Ephriam		laborer	29	9	f m f	14
1020	Lehman, Benjamin		jeweller	29	9	f m f	14
1022	Lott, Hiram B	j	farmer	38	7	f m f	18
917	Lott, Ralph		farmer	38	7	f m f	18
918	Lott, Abram		gentleman	38	7	f m f	18
1205	McAvoy, Chas C	j	farmer	32	8	t m f	18
1207	Meyer, Jacob	j	farmer	30	9	t m f	14
1208	Meyer, Edward		farmer	30	9	f m f	14
1209	Mantle, Abraham		laborer	29	9	f m f	14
1210	McDonald, Patk	j	farmer	25	8	t m f	18
1211	McDonald, Wm J	j	farmer	25	8	t m f	18
1224	Monkhonse, Jos (see 4)		postmaster	30	9	f m f	14
1225	Monkhonse, W J	j	clerk	30	9	f m f	14
1226	Mowder, Nelson	j	laborer	31	9	f m f	14
1243	Neal, James	j	farmer	24	8	t m f	18
1249	Nighswander, Christian	j	farmer	35	7	f m f	22
1250	Nighswander, Ralph	j	farmer	35	7	f m f	22
1254	Nighswander, Michael	j	farmer	34	7	f m f	22
1255	Nighswander, Tillman	j	farmer	34	7	f m f	22
1256	Nighswander, A B	j	shoemaker	31	8	f m f	18
1256	Nighswander, Wilfrid		laborer	31	8	f m f	18
1258	Nighswander, Martin		farmer	31	9	f m f	14

POLLING SUB DIVISION NO. 12.

97

NO. ON ROLL.	NAME.	JUROR.	OCCUPATION	LOT	CON	QUALIFICATION	AGE
1259	Nighswander, Enos	j	farmer	31	9	f s	m f 14
1392	Pipher, Andrew	j	farmer	33	7	t	m f 12
1417	Pugh, William D	j	farmer	24	9	t	m f 15
1493	Richardson, George	j	farmer	25	9	f	m f 15
1495	Reesor, Elias	j	farmer	27	9	f	m f 14
1496	Reesor, William	j	farmer	27	9	f	m f 14
1497	Reesor, Barkis	j	farmer	27	9	f	m f 14
1498	Reesor, Flavius	j	carpenter	29	9	f	m f 14
1499	Reesor, Aylmer	j	carpenter	29	9	f	m f 14
1500	Reesor, Abram	j	farmer	30	9	f	m f 14
1504	Roper, Henry	j	farmer	33	9	t	m f 14
1632	Stewart, Peter (see 9)	j	farmer	28	7	f	m f 13
1634	Spears, Adam	j	farmer	29	7	f	m f 13
1638	Story, Andrew	j	farmer	23	8	f	m f 15
1644	Storry, William	j	farmer	23	7	t	m f 15
1658	Slack, James (see 11)	j	farmer	24	9	t	m f 15
1729	Turner, Wm B	j	farmer	32	7	f	m f 12
1731	Turner, Wm J	j	farmer	31	7	t	m f 12
1747	Underhill, James	j	farmer	25	7	t	m f 13
1859	Wilson, New (see 7 11)	j	farmer	23	7	f	m f 11
1862	Whitson, Robert	j	farmer	28	8	f	m f 13
1863	Whitson, John	j	farmer	28	8	f	m f 13
1864	Whitson Adam	j	farmer	26	7	f	m f 13
1865	White, John	j	farmer	29	9	f	m f 14
1866	White, Francis	j	farmer	29	9	f s	m f 14
1869	Wideman, Joseph	j	postmaster	29	8	t	m f 13
1872	Wideman, Abram	j	farmer	35	9	t	m f 23
1901	Yake, Harmon	j	farmer	33	9	f	m f 14

Voters' List for 1897.

—: Municipality of the —:

Township of Pickering,

Polling Sub-Division No. 12.

Comprising all the Lots from No. 23 to No. 35 inclusive, from the Seventh Concession Line to the Northern Townline.

PART II—List of persons entitled to vote at Municipal Elections only.

NO. ON ROLL	NAME.	JUROR	OCCUPATION	LOT	CON	QUALIFICATION.	P. O.
215	Beelby, Matt (see 11)		farmer	29	7	f	15
434	Bennett, Thomas		hotelkeeper	24	9	f	33
671	Burkholder, A B			35	8	f	25
1206	Bently, Mrs		widow	32	8	f	23
1870	Brownsberger, David			29	8	f	
369	Cowie, John (see 7)		farmer	26	7	f	11
370	Cowie, Catharine		widow	26	7	f	18
378	Cowie, Mrs John		widow	27	7	f	
379	Coulson, David			30	7	f	35
388	Coates, W H (see 10)		farmer	33	8	t	15
1733	Conley, Mrs W		widow	31	7	f	25
440	Dunkeld, Mrs T		widow	32	7	f	13
534	Forsyth, Susan		widow	30	9	f	14
1873	Freel, S L		physician	35	9	f	23
668	Graham, Mrs M		widow	23	9	f	15
390	Heisey, Jacob			33	8	f	23
801	Hodgson, Henry		farmer	34	9	t	14
803	Hayward, Alfred			24	8	t	
804	Hayward, Mrs		widow	24	8	f	

POLLING SUB-DIVISION NO. 12

99

NO. ON ROLL.	NAME.	JUROR.	OCCUPATION	LOT.	CON	QUALIFICATION	♂ ♀
814	Hoover, Martin		miller	28	9	f	26
869	Johnston, Mrs A		widow	26	8	f	18
1650	Law, Joseph (see 11)		gentleman	27	8	f	15
662	Michell, W J (see 11)		gentleman	25	9	f	15
1215	Michell, C A (see 11)		farmer	30	8	f	15
1188	Moore, John (see 10)			24	7	f	16
1505	Morgan, George		manufac'er	33	9	f	27
1506	Morgan, Thomas		manufac'er	33	9	f	27
1645	Medd, Mrs M (see 5)		widow	28	7	f	2
1748	Miller, John (see 7 11)		farmer	25	7	f	11
1251	Nighswander, Henry			34	7	f	29
1252	Nighswander, Jacob			34	7	f	
1418	Pugh, Price (see 11)		farmer	24	9	f	15
783	Sharrard, Aaron (see 8)		gentleman	24	7	f	17
1648	Spofford, Mrs M		widow	26	9	f	15
1636	Scott, Wm (see 11)		farmer	25	7	f	11
1649	Spofford, F (see 11)		farmer	26	9	f	15
1659	Sypher, David			24	9	f	28
221	Ward, Robt W (see 11)			29	7	f	15
1871	Wideman, Christian			35	9	f	23
1875	Walker, George			29	9	f	28

Voters' List for 1897.

— Municipality of the —

Township of Pickering,

Polling Sub Division No. 12.

Comprising all the Lots from No. 23 to No. 35 inclusive, from the Seventh Concession Line to the Northern Townline.

PART III.—List of Persons entitled to vote at Elections to the LEGISLATIVE ASSEMBLY only.

NO. ON ROLL.	NAME.	JUROR.	OCCUPATION	LOT	CON	QUALIFICATION.	P. O.
212	Bowes, Robert		farmer	25	9	m f	15
214	Bowes, James		farmer	25	9	m f	15
227	Burkholder, Joseph		laborer	28	9	m f	14
217	Burkholder, Joseph		laborer	35	7	m f	22
545	Forsyth, Daniel jr		laborer	23	9	m f	15
853	Jones, Alexander		laborer	23	8	m f	15
858	Jerman, Henry		smith	28	7	m f	13
1248	Neal, Lawrence		laborer	27	8	m f	15
1483	Riddell, James		laborer	26	7	m f	13
1646	Stover, Jacob		laborer	29	8	m f	13
1670	Scott, John		laborer	32	9	m f	14
1740	Todd, Willham		laborer	27	7	m f	13
1871	Wallace, R B		laborer	30	8	m f	18

CERTIFICATE.

I hereby certify that the aggregate number of names on the foregoing List, qualified to serve as Jurors, is eight hundred and fifty-five. (855).

D. R. BEATON,
Clerk of Pickering Tp.

I Donald Robert Beaton, Clerk of the Municipality of the Township of Pickering, in the County of Ontario, do hereby certify that Parts I and III of the within Voters' List constitutes a correct list for the year 1897 of all persons, appearing by the last revised Assessment Roll of the said Municipality to be entitled to vote at Elections for Members of the Legislative Assembly; and that Parts I and II constitutes a correct list for the said year of all persons appearing by said Roll to be entitled to vote at Municipal elections in the said Municipality; and I hereby call upon all electors to examine the said list, and if any omissions or other errors are perceived therein, to take immediate proceedings to have said errors corrected according to law.

Dated at Pickering, this 22nd day of Aug., 1897.

Donald R. Beaton

Clerk of the Municipality of the
Township of Pickering,
Whitevale. P. O.

