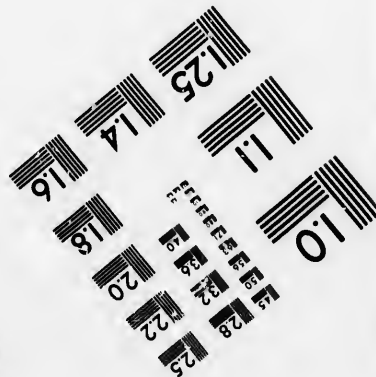
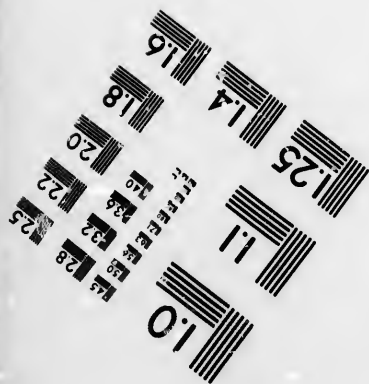
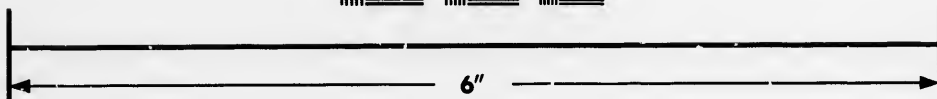
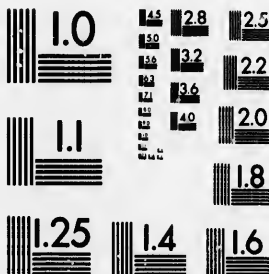


**IMAGE EVALUATION
TEST TARGET (MT-3)**



**Photographic
Sciences
Corporation**

23 WEST MAIN STREET
WEBSTER, N.Y. 14580
(716) 872-4503

1.5 1.8 2.0 2.2 2.5
2.8 3.2 3.6 3.8

**CIHM/ICMH
Microfiche
Series.**

**CIHM/ICMH
Collection de
microfiches.**



Canadian Institute for Historical Microreproductions / Institut canadien de microreproductions historiques

1.0 1.5 1.8 2.0 2.2 2.5
2.8 3.2 3.6 3.8

© 1987

Technical and Bibliographic Notes/Notes techniques et bibliographiques

The Institute has attempted to obtain the best original copy available for filming. Features of this copy which may be bibliographically unique, which may alter any of the images in the reproduction, or which may significantly change the usual method of filming, are checked below.

L'Institut a microfilmé le meilleur exemplaire qu'il lui a été possible de se procurer. Les détails de cet exemplaire qui sont peut-être uniques du point de vue bibliographique, qui peuvent modifier une image reproduite, ou qui peuvent exiger une modification dans la méthode normale de filmage sont indiqués ci-dessous.

- Coloured covers/
Couverture de couleur
- Covers damaged/
Couverture endommagée
- Covers restored and/or laminated/
Couverture restaurée et/ou pelliculée
- Cover title missing/
Le titre de couverture manquant
- Coloured maps/
Cartes géographiques en couleur
- Coloured ink (i.e. other than blue or black)/
Encre de couleur (i.e. autre que bleue ou noire)
- Coloured plates and/or illustrations/
Planches et/ou illustrations en couleur
- Bound with other material/
Relié avec d'autres documents
- Tight binding may cause shadows or distortion along interior margin/
La reliure serrée peut causer de l'ombre ou de la distorsion le long de la marge intérieure
- Blank leaves added during restoration may appear within the text. Whenever possible, these have been omitted from filming/
Il se peut que certaines pages blanches ajoutées lors d'une restauration apparaissent dans le texte, mais, lorsque cela était possible, ces pages n'ont pas été filmées.
- Additional comments:/
Commentaires supplémentaires:

- Coloured pages/
Pages de couleur
- Pages damaged/
Pages endommagées
- Pages restored and/or laminated/
Pages restaurées et/ou pelliculées
- Pages discoloured, stained or foxed/
Pages décolorées, tachetées ou piquées
- Pages detached/
Pages détachées
- Showthrough/
Transparence
- Quality of print varies/
Qualité inégale de l'impression
- Includes supplementary material/
Comprend du matériel supplémentaire
- Only edition available/
Seule édition disponible
- Pages wholly or partially obscured by errata slips, tissues, etc., have been refilmed to ensure the best possible image/
Les pages totalement ou partiellement obscurcies par un feuillet d'errata, une pelure, etc., ont été filmées à nouveau de façon à obtenir la meilleure image possible.

This item is filmed at the reduction ratio checked below/
Ce document est filmé au taux de réduction indiqué ci-dessous.

10X	12X	14X	16X	18X	20X	22X	24X	26X	28X	30X	32X
<input type="checkbox"/>	<input type="checkbox"/>	<input type="checkbox"/>	<input type="checkbox"/>	<input type="checkbox"/>	<input type="checkbox"/>	<input type="checkbox"/>	<input type="checkbox"/>	<input type="checkbox"/>	<input type="checkbox"/>	<input type="checkbox"/>	<input checked="" type="checkbox"/>

The copy filmed here has been reproduced thanks to the generosity of:

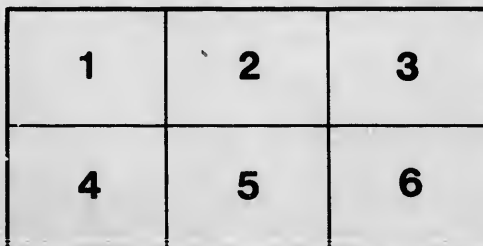
Metropolitan Toronto Library
Canadian History Department

The images appearing here are the best quality possible considering the condition and legibility of the original copy and in keeping with the filming contract specifications.

Original copies in printed paper covers are filmed beginning with the front cover and ending on the last page with a printed or illustrated impression, or the back cover when appropriate. All other original copies are filmed beginning on the first page with a printed or illustrated impression, and ending on the last page with a printed or illustrated impression.

The last recorded frame on each microfiche shall contain the symbol \rightarrow (meaning "CONTINUED"), or the symbol ∇ (meaning "END"), whichever applies.

Maps, plates, charts, etc., may be filmed at different reduction ratios. Those too large to be entirely included in one exposure are filmed beginning in the upper left hand corner, left to right and top to bottom, as many frames as required. The following diagrams illustrate the method:



L'exemplaire filmé fut reproduit grâce à la générosité de:

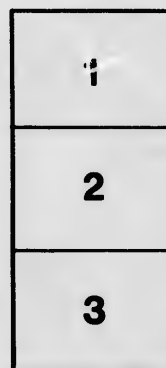
Metropolitan Toronto Library
Canadian History Department

Les images suivantes ont été reproduites avec le plus grand soin, compte tenu de la condition et de la netteté de l'exemplaire filmé, et en conformité avec les conditions du contrat de filmage.

Les exemplaires originaux dont la couverture en papier est imprimée sont filmés en commençant par le premier plat et en terminant soit par la dernière page qui comporte une empreinte d'impression ou d'illustration, soit par le second plat, selon le cas. Tous les autres exemplaires originaux sont filmés en commençant par la première page qui comporte une empreinte d'impression ou d'illustration et en terminant par la dernière page qui comporte une telle empreinte.

Un des symboles suivants apparaîtra sur la dernière image de chaque microfiche, selon le cas: le symbole \rightarrow signifie "A SUIVRE", le symbole ∇ signifie "FIN".

Les cartes, planches, tableaux, etc., peuvent être filmés à des taux de réduction différents. Lorsque le document est trop grand pour être reproduit en un seul cliché, il est filmé à partir de l'angle supérieur gauche, de gauche à droite, et de haut en bas, en prenant le nombre d'images nécessaire. Les diagrammes suivants illustrent la méthode.



trata
o
elure.
à



32X

NUMBER OF LOTS	CONVEY- SIONS.	TOWNSHIPS.	
No. 59 and quarter of 58	1	Vaughan,	262
6 and 7	1	Reach,	100
1	6	Do.	200
25 and 26	1	Uxbridge,	100
16, 17, 18	2	do.	600
East half of 10	1	do.	100
9 and 10	6	do.	100
12, 13, 14	7	E. Gwillimbury,	600
19	8	do.	200
West halves of 7, 8, 9	3	York,	100
part of 61	1	Whitchurb,	95
B	4	do.	200
25, 29, and 31	6	do.	600
26	3	Scott,	200
22	5	do.	200
21	6	do.	200
60	1	Markham,	190
West half of 14	3	do.	100
E. halves 29, 30, W. Hurontario-st.	1	Mono,	200
21 and east half of 33	1	Albion,	300
11, and 18	3	do.	100
32	5	do.	200
25	6	do.	200
26	9	do.	200
29	1	Caledon,	200
15	3	Medonte.	200
West half of 2 and all 12	1	do.	300
15 and 17	5	do.	400
7 and 16	6	do.	400
20	7	do.	200
18	8	do.	200
7, 8, 9 and 11	10	do.	300
13	1	Orillia, S.	200
5	2	do.	200
10	1	do.	200
3	5	do.	200
1 and 3	1	Orillia, N.	400
5	4	do.	200
2 and 5	6	do.	400
1 and 13	8	do.	400
11	10	do.	200
8, 10, and west half of 13	12	do.	500
11	16	do.	200
6	4	Mersea,	200
2	6	do.	200
6 and 7. (100 acres each)	4	Barton,	200
6, 8, 9, 12, 13, 19, 20 and 21	8	Saltfleet,	800
13 and 12	7	do.	300
29 and west half of 30	5	Beverley,	300
24	9	North Crosby,	200
16	6	do.	200
1 and half of 6	5	Walsingham,	300
S. half of 15, east of Talbot-road		Southwold,	100
5, 6, 7, 8 and 10	2	North Dorchester,	1000
2, 4 and 6	6	Aldborough,	600
North-west half of 3	3	do.	100
Front, or northerly 3-4 of 11, 12	6	do.	300
18	10	Carradoc,	200
22. [broken front]	B	Haldimand,	100
North half of 22	1	Percy,	100
19	10	Manvers,	200
23 and 25	1	Gainsboro',	400
41, & E. half of 42 [Bay-side]	1	Marysburgh,	150
N. half of E. half of 3	2	Fredericksburgh } Additional, }	50
18	3	Pittsburgh,	200
11 and 13	6	do.	400
13	7	do.	200
15	9	do.	200
31, 32, [whole] & 31, 35, 36, } 37, and 38 [broken Lots] }	12	do.	550
10	13	do.	200
18 and west half of 17	11	Rawdon,	300
21	8	Richmond,	200
17	7	Kingston,	200
336, town-lot, 1-5 acre Kingston		do.	
Water lot 3, opposite 6 do.		do.	
25 West of Hurontario-street	2	Mono,	160
7 East of do.	2	Mulmer,	172
13	1	Amarinth,	200
27	3	do.	200
West half of 23	3	do.	100

* * Several Building Lots at the Village of Dundas, near Coote's Paradise.

LANDS FOR SALE,
IN THE OFFICE OF W. W. BALDWIN—YORK, Upper Canada.

NUMBER OF LOTS.	CONSER- VATIONS.	TOWNSHIPS.	
No. 1	1	York, W. of Yonge-st.	210
12, 13 and 11	3	Whitechurch	1000
13 and 15	4	do.	200
17	8	E. Gwilliambury	200
7	1	Scott	200
14	6	Saltfleet	100
North half of 11	6	Tecumseth	100
South half of 29	1	Whitby	300
S. 50 acres & broken front 32	1	do.	
33	3	do.	200
22, 23, 25, 26, 31, 32, 34 and 35	4	do.	1000
7 and 8	2	Whitechurch	450
66, on Yonge-Street	1	do.	100
66, on do.	1	King	210
32	3	do.	200
32	7	do.	200
32	12	do.	200
East ends of 21 and 22	12	do.	200
4	2	Mono	200
9	1	do.	200
West half of 1	5	do.	100
South-east quarter of 1	5	do.	50
East half of 22	1	Adjala	100
22	2	do.	200
8	14	Innisfil	200
22	1	Essa	200
1	2	do.	200
13	7	do.	200
4	10	do.	200
21	12	Manvers	200
South half of 30	1	Clarke	100
16 and 18, [broken Lots]	12		
17 do.	11	Cartwright	200
14	5	Hope	200
21	1	Elmsly	200
21 and 25	2	do.	400
22 and 24	11	Townsend	200
23	12	do.	200
24	13	do.	200
24	14	do.	200
22, 24, 25, 26 and 28	10	Norwich	1000
22, 23, 25, 27 and 28	11	do.	1000
22, 24, 25, 26 and 28	12	do.	1000
1, 3, 4, 5 and 7	10	Derham	1000
1, 2, 4, 6 and 7	11	do.	1000
1 and 7	12	do.	400
North halves of 12, 13 and 14	2	Charlotteville	400
South halves of 12, 13 and 14	1	do.	400

☞ Several **BUILDING LOTS** in **YORK TO LET**, and others in the vicinity **FOR SALE**.

