

**CIHM
Microfiche
Series
(Monographs)**

**ICMH
Collection de
microfiches
(monographies)**



Canadian Institute for Historical Microreproductions / Institut canadien de microreproductions historiques

© 1996

Technical and Bibliographic Notes / Notes technique et bibliographiques

The Institute has attempted to obtain the best original copy available for filming. Features of this copy which may be bibliographically unique, which may alter any of the images in the reproduction, or which may significantly change the usual method of filming are checked below.

L'Institut a microfilmé le meilleur exemplaire qu'il lui a été possible de se procurer. Les détails de cet exemplaire qui sont peut-être uniques du point de vue bibliographique, qui peuvent modifier une image reproduite, ou qui peuvent exiger une modifications dans la méthode normale de filmage sont indiqués ci-dessous.

- Coloured covers / Couverture de couleur
- Covers damaged / Couverture endommagée
- Covers restored and/or laminated / Couverture restaurée et/ou pelliculée
- Cover title missing / Le titre de couverture manque
- Coloured maps / Cartes géographiques en couleur
- Coloured ink (i.e. other than blue or black) / Encre de couleur (i.e. autre que bleue ou noire)
- Coloured plates and/or illustrations / Planches et/ou illustrations en couleur
- Bound with other material / Relié avec d'autres documents
- Only edition available / Seule édition disponible
- Tight binding may cause shadows or distortion along interior margin / La reliure serrée peut causer de l'ombre ou de la distorsion le long de la marge intérieure.
- Blank leaves added during restorations may appear within the text. Whenever possible, these have been omitted from filming / Il se peut que certaines pages blanches ajoutées lors d'une restauration apparaissent dans le texte, mais, lorsque cela était possible, ces pages n'ont pas été filmées.
- Additional comments / Commentaires supplémentaires:

- Coloured pages / Pages de couleur
- Pages damaged / Pages endommagées
- Pages restored and/or laminated / Pages restaurées et/ou pelliculées
- Pages discoloured, stained or foxed / Pages décolorées, tachetées ou piquées
- Pages detached / Pages détachées
- Showthrough / Transparence
- Quality of print varies / Qualité inégale de l'impression
- Includes supplementary material / Comprend du matériel supplémentaire
- Pages wholly or partially obscured by errata slips, tissues, etc., have been refilmed to ensure the best possible image / Les pages totalement ou partiellement obscurcies par un feuillet d'errata, une pelure, etc., ont été filmées à nouveau de façon à obtenir la meilleure image possible.
- Opposing pages with varying colouration or discolourations are filmed twice to ensure the best possible image / Les pages s'opposant ayant des colorations variables ou des décolorations sont filmées deux fois afin d'obtenir la meilleure image possible.

This item is filmed at the reduction ratio checked below /
Ce document est filmé au taux de réduction indiqué ci-dessous.

	10X		14X		18X		22X		26X		30X
	12X		16X		20X		24X		28X		32X
									<input checked="" type="checkbox"/>		

The copy filmed here has been reproduced thanks to the generosity of:

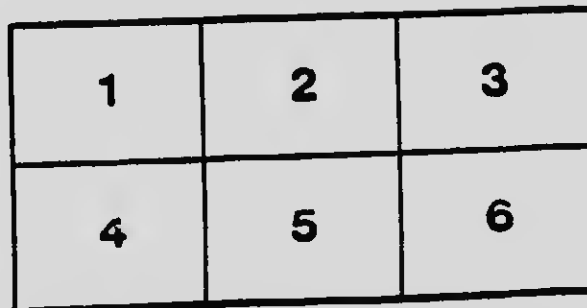
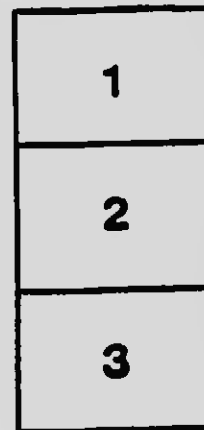
National Library of Canada

The images appearing here are the best quality possible considering the condition and legibility of the original copy and in keeping with the filming contract specifications.

Original copies in printed paper covers are filmed beginning with the front cover and ending on the last page with a printed or illustrated impression, or the back cover when appropriate. All other original copies are filmed beginning on the first page with a printed or illustrated impression, and ending on the last page with a printed or illustrated impression.

The last recorded frame on each microfiche shall contain the symbol \rightarrow (meaning "CONTINUED"), or the symbol ∇ (meaning "END"), whichever applies.

Maps, plates, charts, etc., may be filmed at different reduction ratios. Those too large to be entirely included in one exposure are filmed beginning in the upper left hand corner, left to right and top to bottom, as many frames as required. The following diagrams illustrate the method:



L'exemplaire filmé fut reproduit grâce à la générosité de:

Bibliothèque nationale du Canada

Les images suivantes ont été reproduites avec le plus grand soin, compte tenu de la condition et de la netteté de l'exemplaire filmé, et en conformité avec les conditions du contrat de filmage.

Les exemplaires originaux dont la couverture en papier est imprimée sont filmés en commençant par le premier plat et en terminant soit par la dernière page qui comporte une empreinte d'impression ou d'illustration, soit par le second plat, selon le cas. Tous les autres exemplaires originaux sont filmés en commençant par la première page qui comporte une empreinte d'impression ou d'illustration et en terminant par la dernière page qui comporte une telle empreinte.

Un des symboles suivants apparaît sur la dernière image de chaque microfiche, selon le cas: le symbole \rightarrow signifie "A SUIVRE", le symbole ∇ signifie "FIN".

Les cartes, planches, tableaux, etc., peuvent être filmés à des taux de réduction différents. Lorsque le document est trop grand pour être reproduit en un seul cliché, il est filmé à partir de l'angle supérieur gauche, de gauche à droite, et de haut en bas, en prenant le nombre d'images nécessaire. Les diagrammes suivants illustrent la méthode.

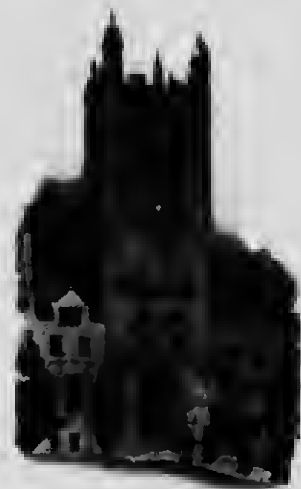
[c. 1910-15]

Trinity College



Queen's Park
Toronto

LE 3
T733
T75



Trinity College
Toronto



Corporation and Council of Trinity College

J. A. WORRELL, K.C., M.A., D.C.L., CHANCELLOR,
HIS GRACE, THE ARCHBISHOP OF ALGOMA, METROPOLITAN OF CANADA,
THEIR LORDSHIPS, THE BISHOPS OF TORONTO, HUDON, NIAGARA,
OTTAWA, ONTARIO,
THE HON. FEATHERSTONE OSLER, K.C., D.C.L., TORONTO,
SIR EDMUND GOSLER, CHAIRMAN OF BOARD OF ENDOWMENT,
THE HON. FREDERIC NICOLLS, VICE-CHAIRMAN,
SIR PENNY PELLATT, C.V.O., HONORARY TREASURER,
D. J. GOGGIN, M.A., D.C.L., CHAIRMAN OF COUNCIL ADMIN.,
THE PROVOST OF TRINITY COLLEGE, VICE-CHANCELLOR,
THE DEANS OF RESHENCE, ARTS, AND DIVINITY,
THE REGISTRAR OF TRINITY COLLEGE.

Other Clerical Members

VERY REV. G. F. STARR, M.A., D.D., KINGSTON,
VERY REV. D. T. GAVEN, D.D., HAMILTON,
VEN. G. C. MACKENZIE, D.C.L., BRANTFORD,
VEN. GOWAN GILMOR, D.D., BRUCE MINKS,
VEN. A. W. MAC KAY, B.D., OTTAWA,
VEN. G. R. BEAMISH, M.A., BELLEVILLE,
REV. C. J. S. BETHUNE, M.A., D.C.L., GORETIC,
REV. E. C. CAVLEY, M.A., D.D., TORONTO,
REV. E. G. ORCHARD, M.A., D.D., PORT HOPE,
REV. CANON RIGBY, M.A., L.L.D., PORT HOPE,
REV. CANON SUTHERLAND, M.A., HAMILTON,
REV. CANON DAVIS, R.A., SARNA,
REV. CANON PLUMMER, L.Th., TORONTO,
REV. CANON PERCY, STURGEON FALLS,
REV. CANON HEDLEY, M.A., PORT ARTHUR,
REV. CANON BEDFORD JONES, M.A., BROCKVILLE,
REV. CANON PLIMPTRE, M.A., TORONTO,
REV. G. S. ANDERSON, L.Th., OTTAWA,
REV. I. I. SMITH, L.Th., OTTAWA,
REV. J. S. RHOUGHALL, M.A., TORONTO,
REV. W. H. WHITE, M.A., PELEBOROUGH,
REV. C. W. BALDUR, M.A., NORTH BAY,
REV. GEORGE CODE, M.A., ATHENS.

Graduates in Medicine

G. A. RINGHAM, M.D., C.M., TORONTO,
ARTHUR JUKES JOHNSON, M.R., TORONTO,
W. H. MORRISON, M.R., LONDON,
R. B. NEVILL, B.A., M.D., C.M., TORONTO,
W. H. PEPLER, M.D., C.M., TORONTO,
R. J. READ, M.A., M.D., C.M., D.D.S., TORONTO.

Other Lay Members

HON. JUSTICE F. E. HODGINS, B.A., TORONTO,
COL. C. S. MACINNIS, C.M.G., K.C., M.A., TORONTO,
CHARLES MORSE, K.C., J.C.L., OTTAWA,
ALBERT HALL, M.S., DOG., TORONTO,
HIS HONOUR JUDGE McDONALD, D.C.L., BROCKVILLE,
LT.-COL. HENRY BROOK, B.C.L., TORONTO,
CAPT. A. E. MATHESON, M.A., PEROG,
CAPT. G. R. STRATHY, M.A., TORONTO,
ALEXANDER BRUCE, K.C., M.A., TORONTO,
W. B. CARROLL, K.C., M.A., GANANQUER,
N. E. DAVIDSON, K.C., M.A., TORONTO,
D. T. SYMONS, K.C., B.C.L., TORONTO,
PROFESSOR G. S. BRETT, M.A., TORONTO,
ELMES HENDERSON, M.A., TORONTO,
PETER PERRY, M.A., PEROG,
J. A. HOUSTON, M.A., TORONTO,
KIRWAN MARTIN, M.A., HAMILTON,
C. M. BALDWIN, M.A., TORONTO,
R. B. BEAUMONT, M.A., TORONTO,
A. H. CAMPBELL, B.A., TORONTO,
J. H. COLLINSON, M.A., HAMILTON,
E. GLYN OSLER, B.A., TORONTO,
F. GORDON OSLER, Esq., TORONTO,
P. A. MANNING, Esq., TORONTO,
M. McLAUGHLIN, Esq., TORONTO,
C. S. SCOTT, Esq., HAMILTON,
J. A. KAMMERER, Esq., TORONTO,
H. GIMMER, Esq., GLEBO.

SYDNEY H. JONES, Esq., SECRETARY AND BURSAR

Endorsement Committee

IN ADDITION TO THE CAMPAIGN COMMITTEE, WHOSE NAMES WILL BE FOUND HEREUNDER, AND THE CORPORATION AND COUNCIL OF TRINITY COLLEGE, WHOSE NAMES APPEAR ON THE FOLLOWING PAGE, THE FOLLOWING HAVE CONSENTED TO BE MEMBERS OF THE ENDORSEMENT COMMITTEE, IN TOKEN OF THEIR HEARTY APPROVAL OF THE PRESENT CAMPAIGN, OF THE IMPORTANCE OF THE WORK OF TRINITY COLLEGE, AND THEIR CONFIDENCE IN ITS ADMINISTRATION.

THE RIGHT HON. SIR GILBERT PARKER, D.C.L., BART
SIR WILLIAM OSLER, M.D., D.C.L., BART
THE RIGHT REVEREND C. H. RRENT, D.D.
THE HON. MR. JUSTICE HAUGHTON LENNON.
MAJOR-GENERAL C. W. ROBINSON, C.B.
MAJOR-GENERAL J. T. FOTHERINGHAM, C.M.G.
GEORGE R. PARKIN, C.M.G., D.C.L., LL.D.

L. M. GRASSETT, M.D., C.M.
MATTHEW WILSON, K.C., D.C.L.
WILLIAM PROUDFOOT, K.C., M.P.P.
I. H. INGERSOLL, K.C.
JOHN CATTO, ESQUIRE.
C. A. C. JENNINGS, ESQUIRE.
MR. AND MRS. E. C. WHITNEY.

LADY WHITNEY.
MRS. CHRISTOPHER ROBINSON.
MRS. C. W. E. BODY.
MRS. H. D. WARREN.
MRS. ARTHUR KELLEY EVANS.
MISS STRACHAN.
MISS CONSTANCE LAING, M.A.

MISS CARTWRIGHT, B.A., PRINCIPAL OF ST. HILDA'S COLLEGE,
MRS. P. J. DYKES, B.A., PRESIDENT OF ST. HILDA'S ALUMNAE ASSOCIATION.

Campaign Committee

*J. A. WORRELL, K.C., D.C.L., CHANCELLOR AND CHAIRMAN.
*D. J. GOGGIN, M.A., D.C.L., VICE-CHAIRMAN.
*SIR HENRY BELLATT, C.V.O., HONORARY TREASURER.
*REV. T. C. S. MACKLEM, M.A., D.D., LL.D., PROVOST OF TRINITY COLLEGE.
*A. H. YOUNG, M.A., D.C.L., DEAN OF RESIDENCE, SECRETARY OF COMMITTEE.
*W. A. KIRKWOOD, M.A., PH.D., REGISTRAR.
*REV. F. H. COSGRAVE, M.A., B.D., DEAN OF DIVINITY.
*SYDNEY H. JONES, HONORARY ASSISTANT TREASURER.

COL. C. S. MACINNES, C.M.G., K.C., M.A.
COL. H. C. OSBORNE, C.M.G., M.A.
LT.-COL. HENRY BROCK, B.C.L.
MAJOR A. D. ARMOUR, M.A.
MAJOR W. ERIC HARRIS, B.A.
CAPT. G. B. STRATHY, M.A.
W. H. PEPLER, M.D., C.M.

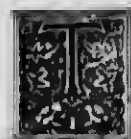
*R. J. READE, M.A., M.D., C.M., D.D.S.
*N. F. DAVIDSON, K.C., M.A.
*D. T. SYMONS, K.C., B.C.L.
C. M. BALDWIN, M.A.
GEORGE W. MORLEY, B.A., LL.B.
F. GORDON OSLER, ESQUIRE.

(The address for the foregoing names is in each case Toronto)

THE VERY REVEREND G. L. STARR, M.A., D.D., KINGSTON.
THE VERY REVEREND D. T. OWEN, D.D., HAMILTON.
THE REVEREND CANON SNOWDON, M.A., OTTAWA.
THE REVEREND W. H. WHITE, M.A., PETERBOROUGH.
THE REVEREND J. B. FOTHERINGHAM, B.A., BRANTFORD.
J. F. ORDE, K.C., OTTAWA.
C. S. SCOTT, F.C.A., HAMILTON.

*THE ASTERISK DENOTES MEMBERS OF THE CAMPAIGN EXECUTIVE COMMITTEE, OF WHICH THE PROVOST IS CHAIRMAN AND DR. A. H. YOUNG IS SECRETARY.

The University of Trinity College



THE illustrations in this Booklet shew the buildings which have been designed by Messrs. Darling and Pearson for the new Trinity College in Queen's Park, the present site having been purchased by the City of Toronto for a public park. The contemplated removal is a result of the federation of the University of Trinity College with the University of Toronto.

Those who remember the architectural beauty of the buildings on Queen Street West, erected at various dates since 1850, and who cherish happy memories associated with them, will note with pleasure, that in the new buildings the familiar and attractive features of the old College are preserved.

Foundation Principles

Trinity College was founded nearly seventy years ago by the Right Reverend John Strachan, first Bishop of Toronto, in order to provide:

1. The best possible secular education combined with religious instruction and worship in accordance with the principles of the Church of England, a fundamental principle from which Trinity College has not departed, and will never depart.
2. Collegiate Residence, where young men during the period of their higher education might enjoy those exceptional advantages which Residence alone can give, a privilege which was extended to Women Students, in 1888, by the establishment of St. Hilda's College.
3. A Theological College, where men could be prepared for the Ministry of the Church of England.

Federation with the University of Toronto

After Trinity College had given more than fifty years of invaluable service as an independent University, its governing body wisely decided



to meet the changed conditions of later times by entering into federation with the University of Toronto. The privileges enjoyed by the State institution were thereby secured for our Church University, which in federation, as before, retains its Collegiate freedom with complete independence in respect of government, internal administration, and religious teaching.

The thoroughly representative character of Trinity College may be seen by reference to another page of this booklet containing the names of the Council, on which are represented the Bishops and Synods of each Diocese in the old Province of Ontario, as well as the Graduates of Trinity, and other affiliated interests. Trinity College occupies a four-fold position, being:

1. The Church University of Ontario federated with the State University of Ontario.
2. An Arts College in the University of Toronto, being one of the four Colleges which make up the Faculty of Arts.
3. A Collegiate Residence, providing an educational home for Men Students in Trinity College and for Women Students in St. Hilda's College.
4. A Theological College—for the instruction and training of candidates for the Ministry of the Church of England, on the comprehensive basis of the Book of Common Prayer in its entirety—and a University conferring Degrees in Divinity.

The Faculty of Arts

In further explanation of the work of Trinity College in connection with the Degree of Bachelor of Arts, it may be stated that the four Arts Colleges of the University of Toronto (named in chronological order) are: University College, governed by the Province of Ontario; Victoria College, governed by the Methodist Church; Trinity College, governed by the Church of England in Ontario; and St. Michael's College, governed by the Roman Catholic Church. There are, however, no denominational restrictions upon the admission of Students to the Arts courses of Trinity College.





PART OF THE SOUTH FACADE, IN WHICH THE FAMILIAR FEATURES OF THE ORIGINAL TRINITY COLLEGE HAVE BEEN FAITHFULLY PRESERVED. IN THE CENTRE IS THE MAIN ENTRANCE, LEADING DIRECTLY TO THE ADMINISTRATION OFFICES AND TO THE LIBRARY, AND GIVING ACCESS TO THE TWO QUADRANGLES BY WHICH ALL OTHER PARTS OF THE COLLEGE ARE REACHED.

The Faculty of Divinity

The whole position of Theology in connection with the University of Toronto is as follows:

Besides Victoria University, Trinity University, and St. Michael's College, which all teach both Arts and Divinity, there are two Theological Colleges, namely, Wycliffe College (Church of England) and Knox College (Presbyterian), which teach Divinity subjects only. These two Colleges, while providing all necessary instruction in Divinity subjects, look to one or another of the Arts Colleges of the University for the Arts teaching needed by their Students, except in the departments of Religious Knowledge, in which they bear their share with the other Colleges.

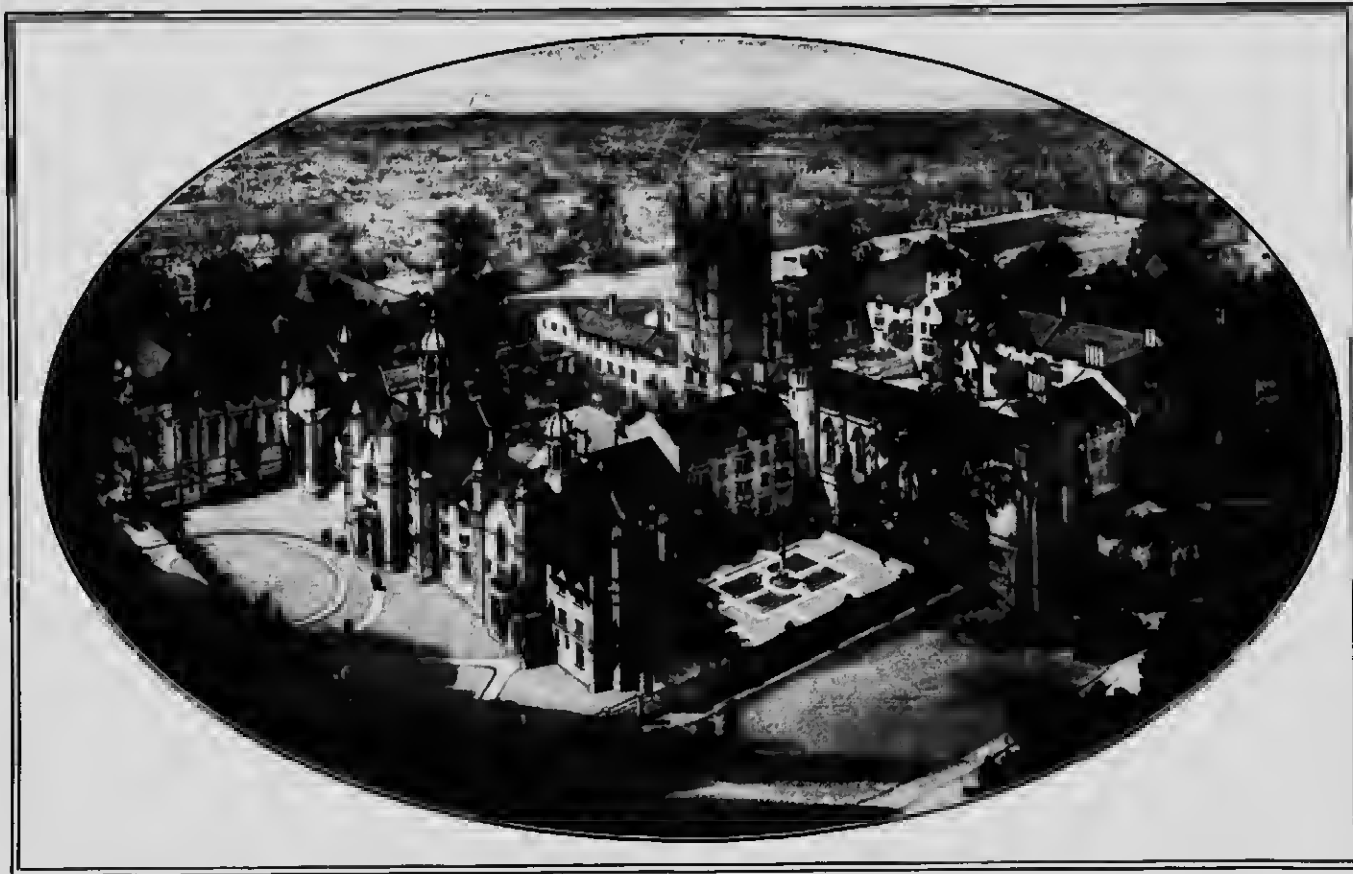
Co-operation in Divinity Degrees

Trinity College, while holding in abeyance its degree-conferring powers in respect of all other faculties because of its federation with the University of Toronto, still exercises independent University functions in the Faculty of Divinity, conferring the Degrees of Bachelor of Divinity and Doctor of Divinity. In respect of these degrees Trinity College, Wycliffe College, Huron College (all in Ontario), and the other Theological Colleges and Universities of the Church of England throughout Canada, co-operate in conducting joint examinations for all their candidates. In this way the value of these degrees is enhanced, and the Colleges as well as the Church they represent are strengthened by this united action.

St. Hilda's College

St. Hilda's College is the Residence for the Women Students of Trinity College. It was established in 1888 through the exertions of Dr. Body, then Provost, and has played an important and most useful part in the educational work of Trinity College for over thirty years. That a Collegiate Residence for Women pursuing a University education is essential to the highest success, is now generally recognized. The plans for the removal of Trinity College to Queen's Park include, of course, the erection of a suitable building there for St. Hilda's College.





AN AEROPLANE VIEW OF THE BUILDINGS, SHOWING THEIR EXTENT AND THE PLAN OF THE TWO QUADRANGLES, WITH THE HENDERSON TOWER IN THE MIDDLE AND THE MEMORIAL CHAPEL AT THE WEST END OF THE HOSKIN AVENUE FACADE IS THE CONVOCATION HALL.

The site set apart for it by the University is on the west side of Devonshire Place, with a frontage on St. George Street. It will thus be near Trinity and closer to the University buildings than any other Residence for Women.

St. Hilda's, which is the pioneer College or Residence for Women in Canada, owes much to its founder and to its first Principal, Miss Ellen Patteson, who for some years prior to her death was Mrs. Oswald Rigby. To commemorate her and to form a fund for the purpose of helping successive generations of undergraduates, a movement was initiated some time ago by Miss Playter and others toward founding the Ellen Patteson Rigby Memorial. A considerable amount had been raised before the demands of the war became insistent, but not enough for the attainment of the original purpose. Therefore a promise has been made to the St. Hilda's Alumnae Association that to this object shall be devoted out of the givings for St. Hilda's a sum sufficient to make the desired capital. As the need for scholarships and other aids to the students is urgent, the foundation of such offers an excellent means of establishing memorials of former benefactors and members of the College.

Trinity's Immediate Needs

1. Educational: There is very urgent need of a supplemental endowment for the educational work of the College. The salaries at present paid to the Professors are wholly inadequate, being far below those paid by other Colleges in the University. That Trinity has, nevertheless, always enjoyed the services of a Staff second to none is an eloquent tribute to the self-sacrificing devotion of these men; and we trust that, by the generous co-operation of many friends, the College will soon be enabled to pay them salaries commensurate with their worth.

2. Buildings: Owing to the very great increase in the cost of building, it is imperatively necessary that the building fund now available be largely augmented before contracts are let for the new buildings.

From the sale of the original College property, with accumulations, we have about \$750,000 available for Building and Endowment. This should be augmented by at least \$400,000 to enable us





THE GARDEN FRONT, AFFORDING A CLOSE VIEW OF THE EXTERIOR OF THE CHAPEL, AND BEYOND TO THE EAST END OF THE PROVOST'S LODGE, WITH A GLIMPSE OF THE FAMILIAR LANTERN-TOWER SURMOUNTING THE ENTRANCE HALL--A REPRODUCTION OF THE ORIGINAL LANTERN OF 1852.



to establish Trinity College and St. Hilda's on the new site, and make a beginning of the increases so urgently needed in salaries. Accordingly, our appeal is now made for the sum named, as follows:

For the Educational Work of Trinity College, especially salaries, \$200,000.

For the new Building for St. Hilda's College, our Residence for Women Students, \$100,000.

For the Memorial Chapel, as part of the new Buildings for Trinity College, \$100,000.

We earnestly ask for your generous help in providing this amount. The worthy history of Trinity College during sixty-seven years, the great services rendered by its many Graduates in every walk of life, the varied needs of Canada in the coming

VIEW OF THE WEST SIDE OF THE CHANCELLORS' QUADRANGLE, SHOWING THE DINING HALL ON THE RIGHT, AND BELOW IT THE WINDOWS OF THE GYMNASIUM FOR INDOOR GAMES IN WINTER. THE MAIN GYMNASIUM (FOR THE WHOLE UNIVERSITY) IS IN HART HOUSE NEARBY.



years—needs which Trinity College can do much to supply—and the present inability of the College to pay adequate salaries to the men who are giving their lives to the education of our sons and daughters—these considerations are surely ample justification for this appeal.

The New Buildings

The illustrations in this booklet give an excellent idea of the beauty and appropriateness of the new buildings for Trinity College. We regret that it is not possible to include views of the new St. Hilda's College, for the reason that the plans for this building are not yet completed.

While our specific appeal is made for the definite objects already named, we should welcome very heartily gifts designated to other necessary

THE FIRST QUADRANGLE, WHICH IS TO BE KNOWN AS THE FOUNDER'S QUADRANGLE, IN MEMORY OF TRINITY'S FOUNDER, THE HONOURABLE AND RIGHT REVEREND JOHN STRACHAN, FIRST BISHOP OF TORONTO. THE ARCHWAY IN THE TOWER LEADS TO THE CHANCELLORS' QUADRANGLE.

purposes, if Benefactors desire to donate distinctive portions of the new Buildings, or endow particular Chairs, or in some other way forward the important educational aims for which Trinity College was founded. In this connection, the following parts of the buildings might be considered:

Convocation Hall
Dining Hall
Central Tower

St. Hilda's College
The College Library
Residence Houses or Halls

Memorial names which have been proposed include the following: "The Founder's Quadrangle," in memory of Bishop Strachan; "The Henderson Tower," in memory of our most generous Benefactor Dr. James Henderson, who has been well called Trinity's Second Founder; "The Chancellors' Quadrangle," with the several Residence Houses or Halls in the Quad. named after the successive Chancellors: Sir John Beverley Robinson, Bart., The Hon. John Hillyard Cameron, Q.C., The Hon. George William Allan, Christopher Robinson, K.C., and John Austin Worrell, K.C.

If benefactions are designated to Professorial Chairs, memorial names might appropriately be attached to these. We need endowed Chairs in Latin, Greek, Hebrew, English Literature, and Modern Languages, in the Faculty of Arts; and in the Faculty of Divinity, Chairs in Old and New Testament, Systematic Theology, Homiletics, and Church Music.

Endowments are needed also to make adequate provision for the Officials of Trinity College, whose duties are of the utmost importance to the residential life and educational work of the College, especially the Provost, the Registrar, and the Deans of Arts, Divinity, and Residence.

An organ for the Chapel would be a fitting gift, as would also an endowment for the Library.





A GENERAL VIEW OF THE BUILDINGS, SHEWING
THE HOSKIN AVENUE FRONT ON THE LEFT,
AND ON THE RIGHT THE GARDEN FRONT
RUNNING NORTH TOWARDS BLOOR STREET.

The War and Trinity College

In 1914 everything was in readiness for the erection of Trinity's new buildings, when the outbreak of the war postponed the undertaking. The time is now come when the work must be taken up again.

In the new College it is proposed to make the Chapel a fitting Memorial of the war. While remembering with special reverence those who gave their lives in the great cause, we wish to commemorate the survivors also, who offered themselves just as freely and with equal courage and devotion. The following figures will help to show the part taken in the war by Trinity College:—

Total Enlistments reported and tabulated up to 31st March, 1919.....	430
Military Rank—	
Commissioned Officers.....	334
Non-commissioned Officers.....	21
	355
Casualties—	
Fatal.....	49
Wounded or Ill.....	197
	246
Honours—	
Titles and Medals.....	67
Honourable Mention.....	63
	130

Since these statistics were compiled we have learned of over sixty more of our graduates in the United States, who enlisted with the American Expeditionary Force. Similar returns are still coming in, but the information is not yet complete enough for tabulation. Our War Memorial Volume, now in preparation, will contain the completed record.

In addition to notices of those who went overseas there will be something said about those who rendered service of various kinds at home, especially in connection with Recruiting and Hospital work. So far as possible, the book will be illustrated with photographs of the fighting men, particularly of those who are not returning.





THE FOUNDER'S QUADRANGLE, SHEWING THE LIBRARY ON THE LEFT, AND ON THE RIGHT THE LECTURE ROOMS. THE LIBRARY WILL AFFORD ACCOMMOATION FOR 20,000 VOLUMES, WITH A STAIRWAY LEAGING LOWN TO A LARGE STACK ROOM IN THE BASEMENT.

Conclusion

Not wishing to overload this Poklet with details and figures which may not be of equal interest to all its readers, we invite those who desire fuller information to write to the Chancellor, the Provost, or any member of the Campaign Committee, who will gladly supply the desired particulars.

Having thus stated the facts briefly and plainly, we are content to leave the issue to the good judgment and generous impulses of our readers.

We feel confident that you will not fail to recognize the importance of providing the highest and best educational facilities for our young men and young women, so that they may be fitted to teach in our Schools, to take their part in the Professional, Political, and Business activities of the Dominion; to preach in our pulpits or otherwise minister in sacred things; and to maintain and advance that standard of Empire and high sense of duty which, in these past few years, have helped to save the world from irreparable disaster.





THE INNER QUADRANGLE, FOR WHICH THE NAME OF "THE CHANCELLORS' QUADRANGLE" HAS BEEN SUGGESTED, WITH THE SEVERAL HALLS OF RESIDENCE AROUND IT NAMED AFTER SUCCESSIVE CHANCELLORS OF TRINITY COLLEGE.

TRINITY COLLEGE : TORONTO

Jan'y 1915.

PLANS FOR PROPOSED BUILDINGS

Darling & Pearson
Architects Toronto

THE ACCOMPANYING PLANS SHEW THE ACCOMMODATION
OUTLINED BELOW

ACADEMIC

- Class Rooms for 350 Students as follows
- Resident Men Students 150
- Non Resident Men Students 75
- Women Students 125
- Total 350
- Chapel to seat 350 persons
- Convocation Hall, to seat 550 persons
- Library for 20,000 volumes, with Reading Rooms underneath (on ground floor) and fireproof Stack Room in Basement
- Working Laboratories for Experiments &c

ADMINISTRATION

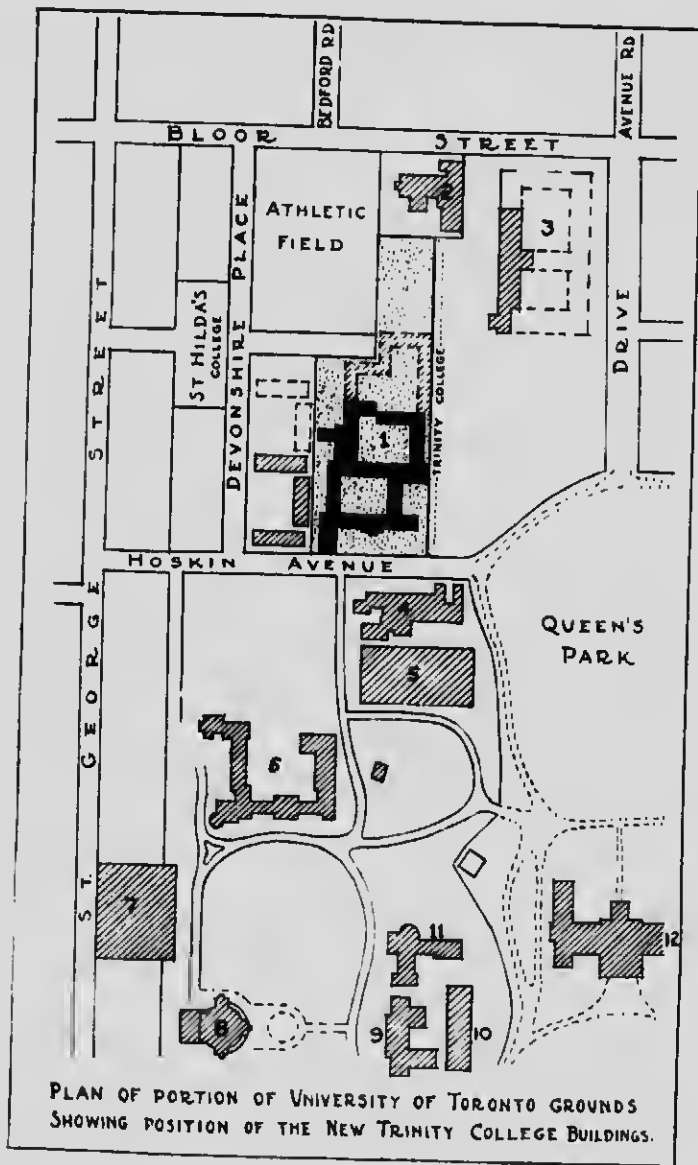
- Offices for Provost, Registrar, Bursar and Stenographers with Vaults for Records &c
- Quarters for Hall Porter, Waiting Room for Visitors
- Lavatories &c

RESIDENTIAL

- Dining Hall to seat 200 Students & 40 members of staff and Visitors

- Two private Dining Rooms for Class dinners, Committee dinners, &c
- Living Rooms for 150 Students as follows
- 122 Study Bedrooms
- 15 Studies with separate Bedrooms
- 15 Studies with separate Bedrooms and with Bathroom common to two Students
- Residence for Provost
- Living Rooms for 12 Resident Members of Staff
- each suite comprising Study, Bedroom, Bath room, Partry (or Cyp Room) and Hall
- Hospital rooms, completely isolated including Nurses' quarters
- Gymnasium under Dining Hall measuring 38.96 feet and 18 feet high suitable for Indoor Basketball and other games in winter
- Court for Squash Racquets
- Steward's Department consisting of Servants Dining Hall, Steward's quarters, Bedrooms for 30 Men and for 10 Women Servants, Bathrooms &c
- Carpenter Shop in Basement
- Trunk Rooms, Cyp Rooms, Lavatories, Shower Baths &c

THE PLANS FOR THE NEW BUILDINGS OF TRINITY COLLEGE PROVIDE ACADEMIC ACCOMMODATION FOR 350 STUDENTS, INCLUDING MEN AND WOMEN. RESIDENTIAL ACCOMMODATION FOR 150 MEN STUDENTS IS PROVIDED IN TRINITY COLLEGE, AND FOR 100 WOMEN STUDENTS IN ST. HILDA'S COLLEGE. FURTHER DETAILS ARE GIVEN ABOVE.





ROUS & MANN, LIMITED, TORONTO



