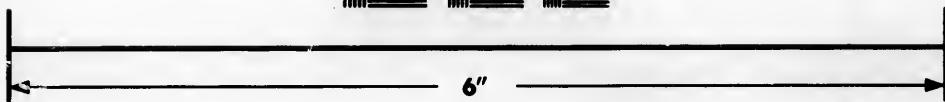
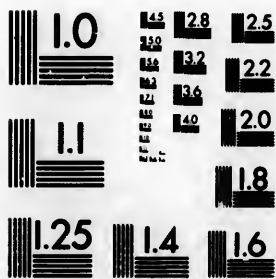


**IMAGE EVALUATION
TEST TARGET (MT-3)**



**Photographic
Sciences
Corporation**

23 WEST MAIN STREET
WEBSTER, N.Y. 14580
(716) 872-4503

1.8
2.0
2.2
2.5
2.8
3.2
3.6
4.0
4.5
5.0

**CIHM/ICMH
Microfiche
Series.**

**CIHM/ICMH
Collection de
microfiches.**



Canadian Institute for Historical Microreproductions / Institut canadien de microreproductions historiques

1.0
1.1
1.2
1.3
1.4
1.5
1.6
1.7
1.8
1.9
2.0

© 1984

Technical and Bibliographic Notes/Notes techniques et bibliographiques

The Institute has attempted to obtain the best original copy available for filming. Features of this copy which may be bibliographically unique, which may alter any of the images in the reproduction, or which may significantly change the usual method of filming, are checked below.

L'Institut a microfilmé le meilleur exemplaire qu'il lui a été possible de se procurer. Les détails de cet exemplaire qui sont peut-être uniques du point de vue bibliographique, qui peuvent modifier une image reproduite, ou qui peuvent exiger une modification dans la méthode normale de filmage sont indiqués ci-dessous.

- Coloured covers/
Couverture de couleur
- Covers damaged/
Couverture endommagée
- Covers restored and/or laminated/
Couverture restaurée et/ou pelliculée
- Cover title missing/
Le titre de couverture manque
- Coloured maps/
Cartes géographiques en couleur
- Coloured ink (i.e. other than blue or black)/
Encre de couleur (i.e. autre que bleue ou noire)
- Coloured plates and/or illustrations/
Planches et/ou illustrations en couleur
- Bound with other material/
Relié avec d'autres documents
- Tight binding may cause shadows or distortion
along interior margin/
La reliure serrée peut causer de l'ombre ou de la
distortion le long de la marge intérieure
- Blank leaves added during restoration may
appear within the text. Whenever possible, these
have been omitted from filming/
Il se peut que certaines pages blanches ajoutées
lors d'une restauration apparaissent dans le texte,
mais, lorsque cela était possible, ces pages n'ont
pas été filmées.
- Additional comments:/
Commentaires supplémentaires:

- Coloured pages/
Pages de couleur
- Pages damaged/
Pages endommagées
- Pages restored and/or laminated/
Pages restaurées et/ou pelliculées
- Pages discoloured, stained or foxed/
Pages décolorées, tachetées ou piquées
- Pages detached/
Pages détachées
- Showthrough/
Transparence
- Quality of print varies/
Qualité inégale de l'impression
- Includes supplementary material/
Comprend du matériel supplémentaire
- Only edition available/
Seule édition disponible
- Pages wholly or partially obscured by errata
slips, tissues, etc., have been refilmed to
ensure the best possible image/
Les pages totalement ou partiellement
obscurcies par un feuillet d'errata, une pelure,
etc., ont été filmées à nouveau de façon à
obtenir la meilleure image possible.

This item is filmed at the reduction ratio checked below/
Ce document est filmé au taux de réduction indiqué ci-dessous.

10X	14X	18X	22X	26X	30X
<input type="checkbox"/>	<input type="checkbox"/>	<input type="checkbox"/>	<input type="checkbox"/>	<input checked="" type="checkbox"/>	<input type="checkbox"/>
12X	16X	20X	24X	28X	32X

The copy filmed here has been reproduced thanks to the generosity of:

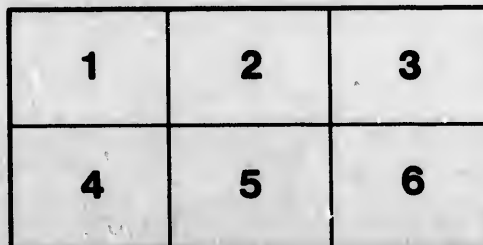
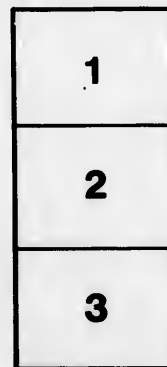
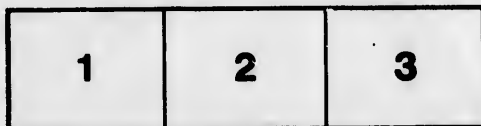
Library of the Public
Archives of Canada

The images appearing here are the best quality possible considering the condition and legibility of the original copy and in keeping with the filming contract specifications.

Original copies in printed paper covers are filmed beginning with the front cover and ending on the last page with a printed or illustrated impression, or the back cover when appropriate. All other original copies are filmed beginning on the first page with a printed or illustrated impression, and ending on the last page with a printed or illustrated impression.

The last recorded frame on each microfiche shall contain the symbol \rightarrow (meaning "CONTINUED"), or the symbol ∇ (meaning "END"), whichever applies.

Maps, plates, charts, etc., may be filmed at different reduction ratios. Those too large to be entirely included in one exposure are filmed beginning in the upper left hand corner, left to right and top to bottom, as many frames as required. The following diagrams illustrate the method:



L'exemplaire filmé fut reproduit grâce à la générosité de:

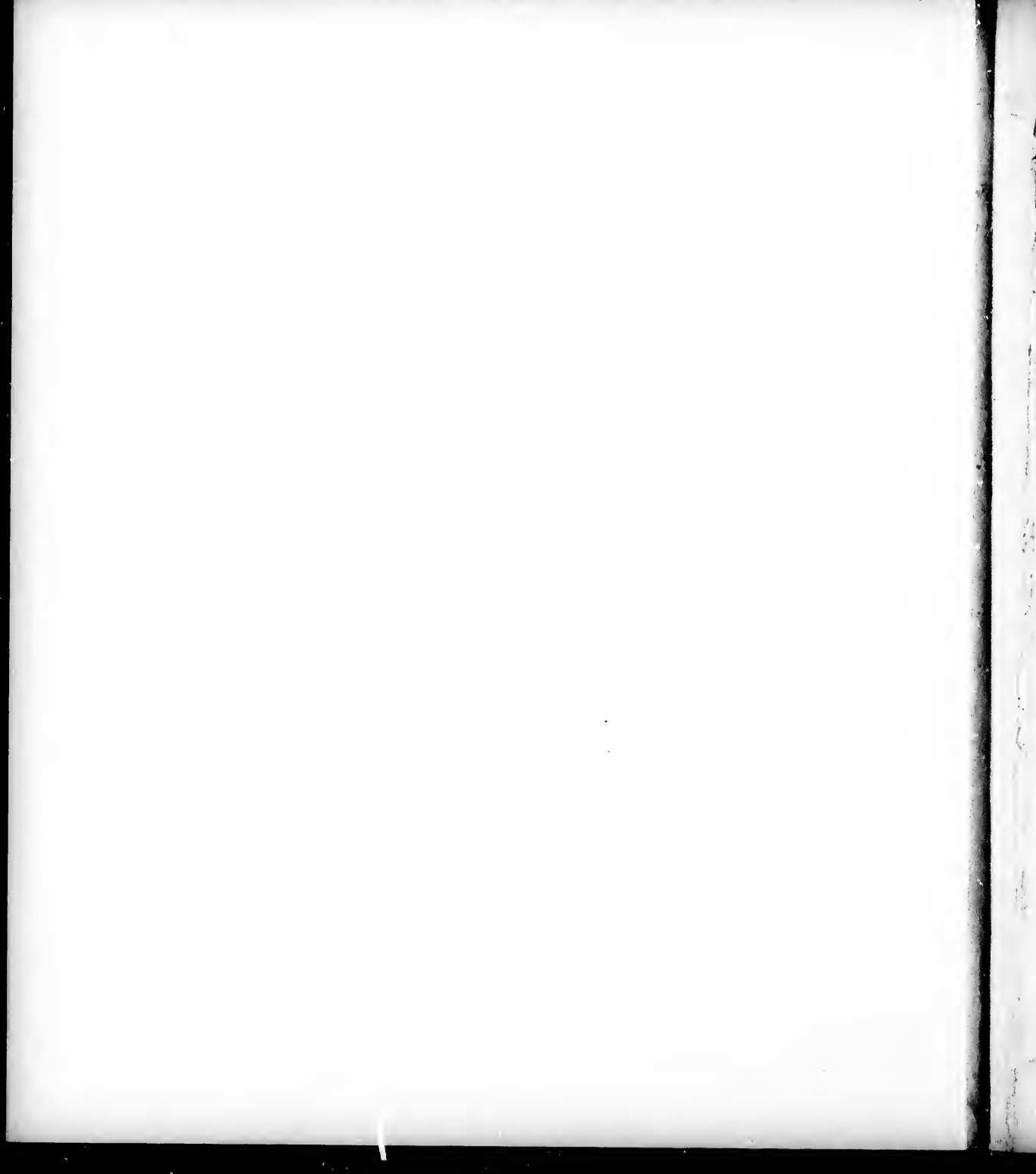
La bibliothèque des Archives
publiques du Canada

Les images suivantes ont été reproduites avec le plus grand soin, compte tenu de la condition et de la netteté de l'exemplaire filmé, et en conformité avec les conditions du contrat de filmage.

Les exemplaires originaux dont la couverture en papier est imprimée sont filmés en commençant par le premier plat et en terminant soit par la dernière page qui comporte une empreinte d'impression ou d'illustration, soit par le second plat, selon le cas. Tous les autres exemplaires originaux sont filmés en commençant par la première page qui comporte une empreinte d'impression ou d'illustration et en terminant par la dernière page qui comporte une telle empreinte.

Un des symboles suivants apparaîtra sur la dernière image de chaque microfiche, selon le cas: le symbole \rightarrow signifie "A SUIVRE", le symbole ∇ signifie "FIN".

Les cartes, planches, tableaux, etc., peuvent être filmés à des taux de réduction différents. Lorsque le document est trop grand pour être reproduit en un seul cliché, il est filmé à partir de l'angle supérieur gauche, de gauche à droite, et de haut en bas, en prenant le nombre d'images nécessaire. Les diagrammes suivants illustrent la méthode.



A B S T R A C T
OF THE
CENSUS OF THE POPULATION
AND OTHER
STATISTICAL RETURNS
OF
PRINCE EDWARD ISLAND :
TAKEN IN THE YEAR 1848,
BY VIRTUE OF AN ACT OF THE GENERAL ASSEMBLY.



CHARLOTTETOWN :
Printed by James Douglas Haszard, Printer to the Queen's most Excellent Majesty.
1849.

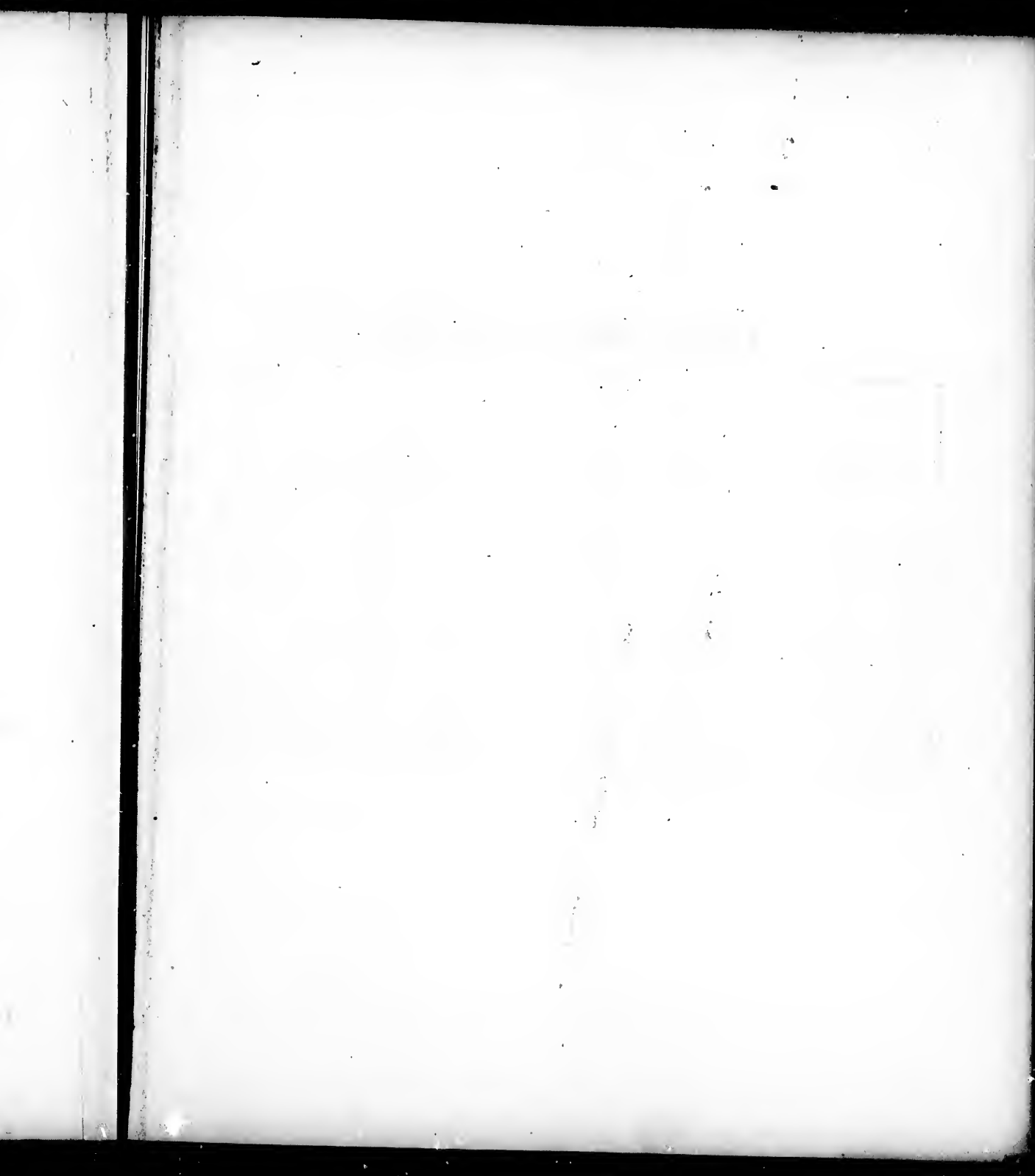
1-2-60

1-2-60

1-2-60

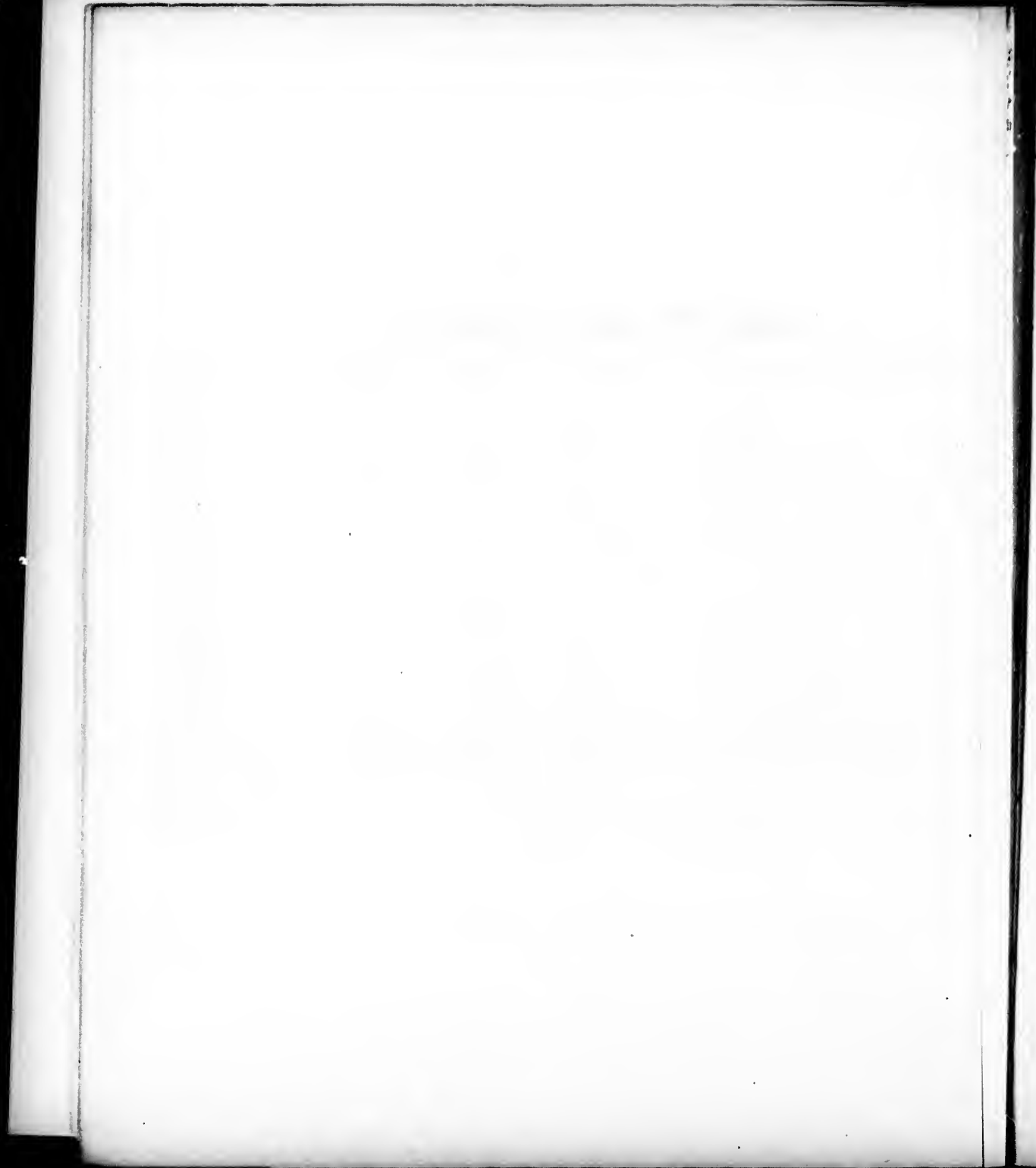
1-2-60

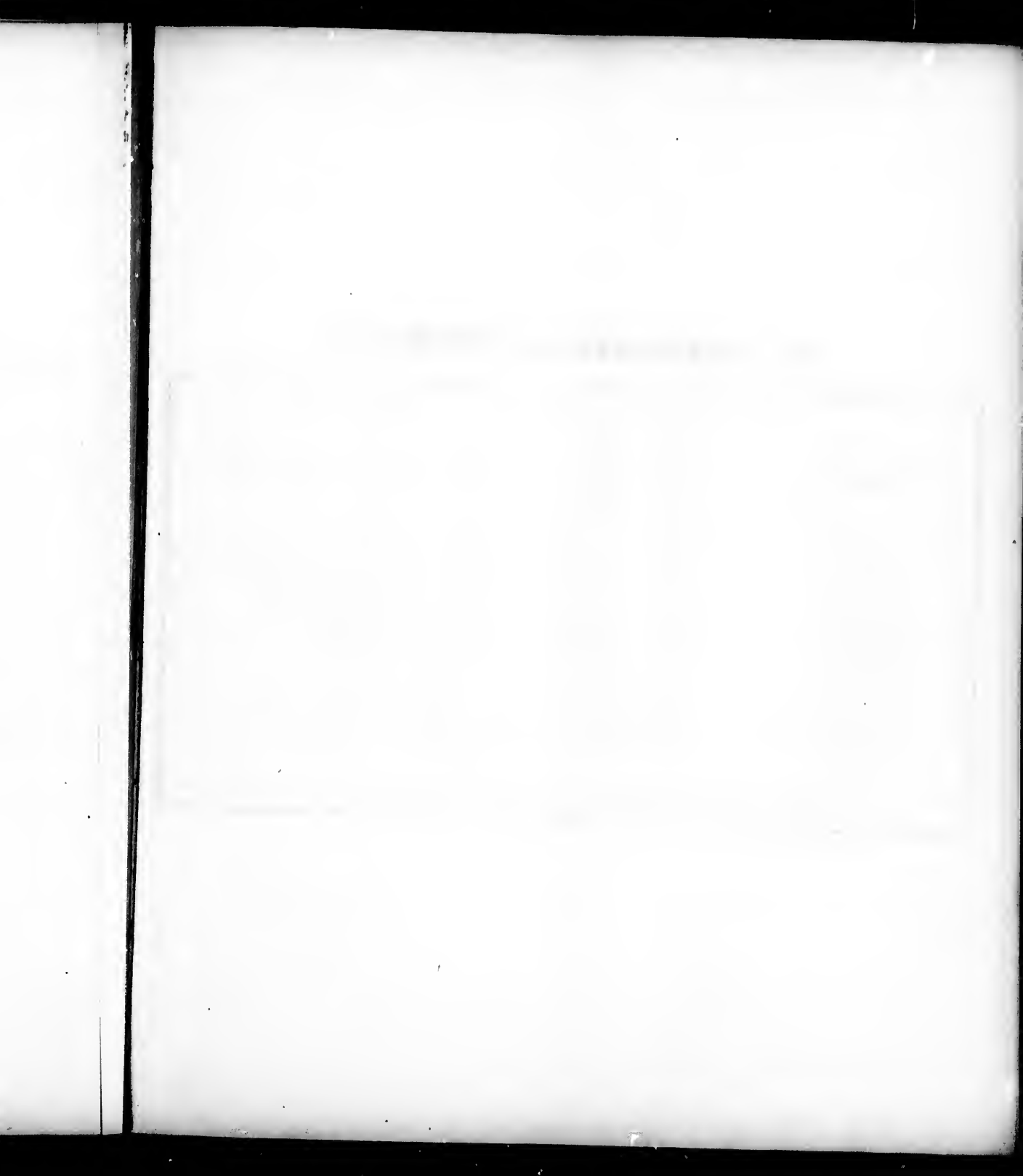
1-2-60



First Electoral District

NUMBER OF TOWNSHIPS	MALES.				FEMALES.				Age not stated.	Members of Church of England.	Free Church.	Kirk of Scotland.	Presbytery of P. E. Island.	Roman Catholics.	Methodists.
	Under 16 years of age.	From 16 to 45.	From 45 to 60.	Upwards of 60.	Under 16 years of age.	From 16 to 45.	From 45 to 60.	Upwards of 60.							
No. 1,	274	212	44	18	279	206	35	15	—	14	—	9	10	1035	15
No. 2,	113	83	13	5	113	81	14	3	—	13	—	—	—	412	—
No. 3,	111	82	13	9	112	72	10	4	1	71	—	—	133	195	15
No. 4,	122	87	17	12	101	73	15	5	—	48	12	2	217	149	—
No. 5,	111	75	14	7	107	78	20	5	—	36	—	—	73	285	5
No. 6,	50	36	9	4	34	30	8	1	—	33	—	—	40	99	—
No. 7,	113	70	18	14	79	70	20	4	9	4	—	—	85	145	12
No. 8,	109	63	20	4	84	65	13	5	—	7	1	1	148	123	45
No. 9,	38	20	1	2	25	24	3	1	—	—	—	10	—	104	—
No. 10,	20	16	4	1	15	13	2	—	1	—	2	—	—	52	—
No. 11,	83	69	24	7	88	62	16	1	—	113	—	—	60	163	8
No. 12, (including Lennox Island),	43	44	10	5	54	31	8	2	—	135	8	15	27	5	7
No. 13,	100	114	20	13	126	97	16	8	1	124	—	8	216	102	21
No. 14,	184	131	26	21	170	126	24	10	—	21	—	1	128	541	—
TOTAL,	1471	1102	233	122	1387	1028	204	64	12	619	23	46	1137	3410	128





First Electoral District

NUMBER OF TOWNSHIP.	NUMBER OF ACRES HELD					Number of Acres of arable land.	CROPS RAISED IN 1847.						
	In fee simple.	Under Lease.	By written demises.	By verbal agreements.	By Occupants not freeholders or tenants.		Wheat.	Barley.	Oats.	Potatoes.	Turnips.	Clover Seed.	Hay.
							Bushels.	Bushels.	Bushels.	Bushels.	Bushels.	lbs.	Tons.
Township 1,	130	8927	802	. .	900	3835	5392	555	6051	34,420	680	. .	643
Township 2,	260	2936	625	. .	55	1486	2099	297	2880	9607	262	. .	200
Township 3,	2983	950	706	450	2822	887	2056	237	1414	6578	399	172	261
Township 4,	130	3425	. .	112	425	989	1729	429	2041	6546	983	72	242
Township 5,	65	2718	440	150	. .	1153	1285	276	2156	6685	506	12	170
Township 6,	130	994	272	30	312	746	822	213	1689	3967	780	12	123
Township 7,	3397	1215	100	. .	450	1079	2021	87	2304	3929	998	25	299
Township 8,	1500	130	. .	50	4675	773	920	117	1368	2594	35	82	181
Township 9,	114	1258	. .	60	130	355	255	56	279	1076	98
Township 10,	230	670	185	341	52	451	898	454	. .	33
Township 11,	800	4148	800	450	. .	1606	1620	170	2693	8091	942	. .	230
Township 12,	732	403	395	187	580	640	674	46	640	3615	982	. .	97
Township 13,	6462	3130	. .	1075	237	3718	1931	454	5439	9833	1513	. .	394
Township 14,	5725	2213	403	. .	1212	2932	1618	507	6936	9446	1016	40	633
Lonnox Island,	2	604	1
	22,658	33,167	4543	2564	11,798	20,384	22,765	3496	36,341	107,889	9550	415	3605

of Prince County.

Turnips.	Clover Seed.	Hay.
Shells.	lbs.	Tons.
380	..	643
262	..	200
399	172	261
383	72	242
506	12	170
190	12	123
198	25	299
35	82	181
41	235	385
13	119	158
10	73	117
75	394	642
33	161	313
125	617	941
148	832	1475
..	..	1
50	415	3605

ACRES UNDER CROP—1848.															
Horses.	Neat Cattle.	Sheep.	Hogs.	Wheat.	Barley.	Oats.	Potatoes.	Turnips.	Churches.	School Houses.	Brow-erics, &c.	Crist Mills.	Carding Mills.	Saw Mills.	Threshing Machines.
252	761	1545	617	535	92	587	391	31	1	3	.	3	1	2	.
84	271	550	238	187	27	237	102	21	.	1
65	286	485	221	164	28	170	67	17	.	3	.	.	.	2	.
59	294	494	145	136	31	139	63	15	1	2
80	245	478	186	142	23	152	71	23
35	187	255	109	78	14	93	31	14	.	.	.	1	.	1	.
60	272	587	130	141	22	143	43	16	3	2	.	.	.	2	.
41	235	385	58	62	9	80	30	.	.	1	.	1	1	2	.
13	119	158	36	26	8	41	14	5	.	1	.	1	.	4	.
10	73	117	51	27	3	29	15	10	.	1	.	.	.	1	.
75	394	642	176	142	26	204	83	31	.	1	.	.	.	1	.
33	161	313	66	83	13	91	47	23	.	1	.	1	.	1	2
125	617	941	230	241	52	352	109	46	1	3	.	1	.	1	.
148	832	1475	303	201	63	399	114	43	2	1	.	2	1	1	1
.	16	.	1
1080	4747	8425	2616	2165	411	2717	1196	295	9	20	.	11	3	18	4





Second Electoral District

NUMBER OF TOWNSHIPS	MALES.				FEMALES.				Members of Church of England.	Free Church.	Kirk of Scotland.	Presbytery of P. E. Island.	Roman Catholics.	Methodists.
	Under 16 years of age.	From 16 to 45.	From 45 to 60.	Upwards of 60.	Under 16 years of age.	From 16 to 45.	From 45 to 60.	Upwards of 60.						
No. 15,	181	163	30	16	188	159	26	17	7	—	—	4	738	18
No. 16,	207	164	30	18	170	168	25	16	62	10	4	256	393	—
No. 17,	296	260	55	32	280	233	52	16	398	1	22	186	438	26
No. 18,	226	192	42	23	205	184	30	23	72	2	11	507	335	6
TOTAL,	910	779	157	89	843	744	142	72	539	13	37	956	1904	50





Second Electoral District

NUMBER OF TOWNSHIP.	NUMBER OF ACRES HELD					Number of Acres of arable land.	CROPS RAISED IN 1847.						
	In fee simple.	Under Lease.	By written demises.	By verbal agreement.	By Occupants not freeholders or ten- ants.		Wheat.	Barley.	Oats.	Potatoes.	Turnips.	Clover Seed.	Hay.
							Bushels.	Bushels.	Bushels.	Bushels.	Bushels.	lbs.	Tons.
Township 15	9692	131	2050	2454	2733	671	4744	8720	1164	. .	614
Township 16	1900	8184	. .	395	200	2979	2512	581	7467	8227	2062	20	805
Township 17	15,147	3178	6	456	300	9299	4381	1251	17,730	12,853	6977	92	1784
Township 18	6919	4191	. .	2223	50	4980	4875	1462	16,422	12,333	5008	289	1211
TOTAL	33,657	15,553	6	3210	2600	19,712	14,501	3965	46,363	42,133	15,211	401	4414

of Prince County.

1947.		
Cornips.	Clover Seed.	Hay.
Bushels.	lbs.	Tons.
1164	• •	614
2062	20	805
6977	92	1784
5008	239	1211
5,211	401	4414

ACRES UNDER CROP—1848.																
Horses.	Neat Cattle.	Sheep.	Hogs.	Wheat.	Barley.	Oats.	Potatoes.	Turnips.	Churches.	School Houses.	Breweries, &c.	Grist Mills.	Carding Mills.	Saw Mills.	Threshing Machines.	
134	597	1115	181	288	65	388	90	•	2	3	•	1	•	2	•	
159	768	1368	254	257	62	464	119	42	1	2	•	1	•	2	2	
311	1186	2215	•99	458	98	764	169	87	3	4	•	2	1	1	7	
254	1134	2579	417	510	93	930	173	32	1	4	•	5	1	•	3	
858	3685	7277	1241	1513	318	2546	571	211	7	13	•	9	2	5	17	





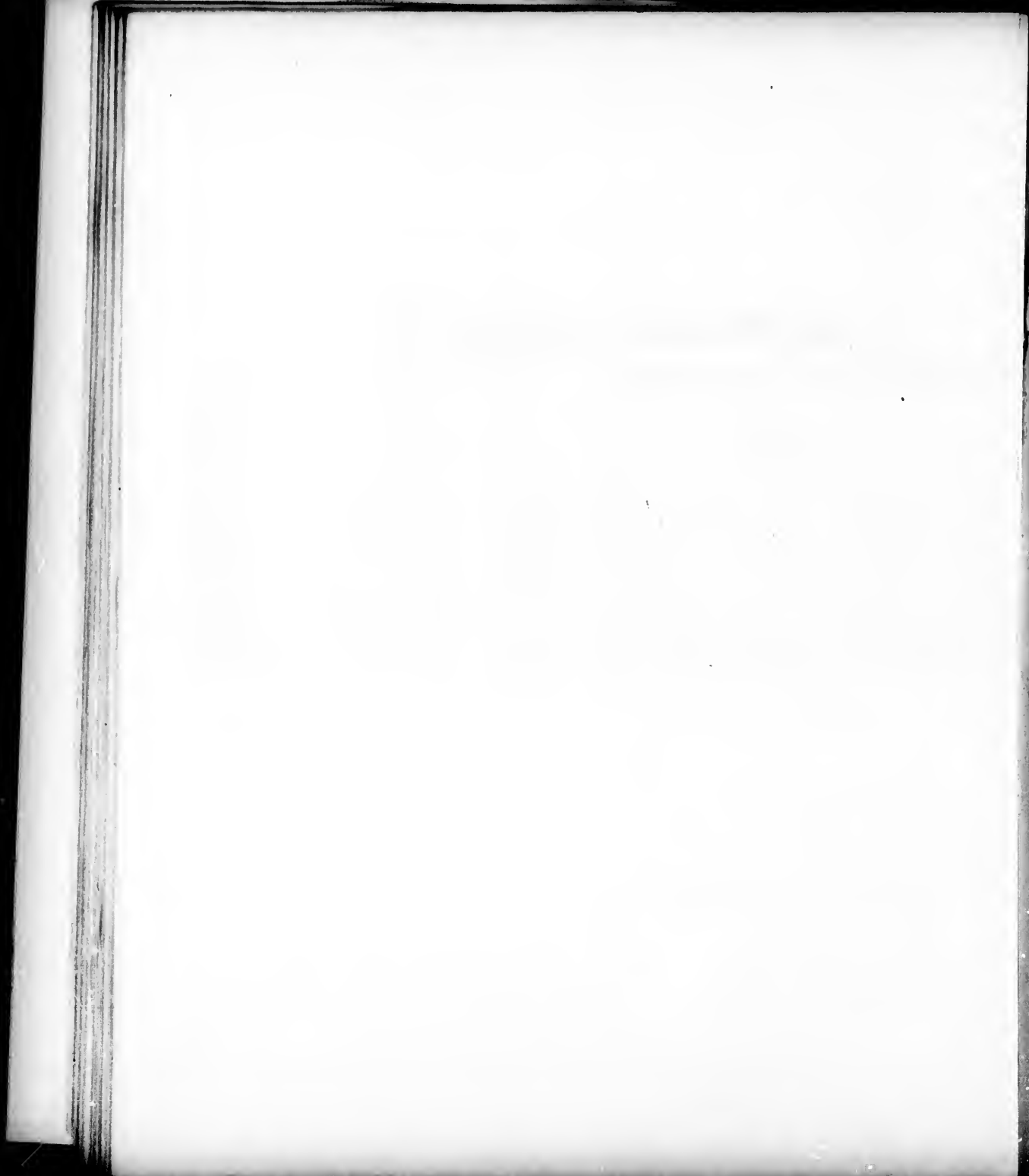
Third Electoral District

NUMBER OF TOWNSHIP.	MALES.				FEMALES.				Age not stated.	Members of Church of England.	Free Church.	Kirk of Scotland.	Presbytery of P. E. Island.	Roman Catholics.	Methodists.
	Under 16 years of age.	From 16 to 45.	From 45 to 60.	Upwards of 60.	Under 16 years of age.	From 16 to 45.	From 45 to 60.	Upwards of 60.							
No. 19,	348	251	58	26	305	252	69	21	—	174	—	104	331	518	132
No. 25,	198	145	36	16	149	126	35	9	—	78	—	69	230	126	107
No. 26,	207	161	47	17	173	160	35	8	—	7	—	6	228	312	139
No. 27,	276	189	57	13	266	183	42	4	—	13	—	126	10	618	218
No. 28,	331	248	57	34	301	265	51	20	—	116	1	352	8	179	462
TOTAL,	1360	994	255	106	1194	986	232	64	1	388	1	657	797	1753	1058

ct

of Prince County.

				NATIVES OF												INDIANS.													
Kirk of Scotland.	Presbytery of P. E. Island.	Roman Catholics.	Methodists.	Baptists.	Bible Christians.	Quakers.	Jews.	Universalists.	Mormons.	Unitarians.	Other denominations.	Religious profession not stated.	England.	Scotland.	Ireland.	British Colonies.	P. E. Island.	Other Countries.	Country not stated.	Deaf and Dumb.	Blind.	Lunatic.	Males.	Females.	Total number of Males.	Total number of Females.	Total number of Inhabitants.		
104	331	518	132	14	33	—	—	11	14	—	2	—	95	120	107	53	954	4	—	—	—	—	—	—	—	—	—	—	—
69	220	126	107	24	11	—	—	—	43	—	35	—	32	71	53	25	524	8	—	—	—	—	—	—	—	—	—	—	—
6	228	312	139	15	—	—	—	—	1	—	—	—	8	20	198	29	539	14	—	1	—	—	—	—	—	—	—	—	—
126	10	618	218	40	—	—	—	—	—	—	—	6	13	41	251	28	690	2	6	—	—	—	—	—	—	—	—	—	—
352	8	179	462	55	5	—	—	—	—	—	13	16	76	58	59	44	1060	5	5	—	1	1	—	—	—	—	—	—	—
657	797	1753	1053	48	49	—	—	11	58	—	50	22	224	310	668	179	3767	33	11	1	1	8	7	3	2722	2479	5202		





Third Electoral District

NUMBER OF TOWNSHIP.	NUMBER OF ACRES HELD					Number of Acres of arable land.	CROPS RAISED IN 1847.						
	In fee simple.	Under Lease.	By written demise.	By verbal agreement.	By Occupants not freeholders or ten- ants.		Wheat.	Barley.	Oats.	Potatoes.	Turnips.	Clover seed.	Hay.
							Bushels.	Bushels.	Bushels.	Bushels.	Bushels.	lbs.	Tons.
Township 19	3276	11,050	350	1532	603	5384	5358	847	17,706	16,039	5914	1357	1234
Township 25	12,541	850	..	897	..	4407	2943	473	13,281	7064	2776	30	976
Township 26	11,165	6498	..	100	710	5037	3669	793	14,405	11,838	3233	..	1372
Township 27	4561	6762	1375	4063	2549	1102	12,594	7155	2233	92	783
Township 28	7813	9026	1013	715	100	7505	5333	2029	20,391	24,378	6585	2482	2186
TOTAL	39,356	31,186	1363	3244	2788	23,446	19,837	5309	73,877	66,474	20,746	4011	6451

ct

of Prince County.

1847.			ACRES UNDER CROP—1848.															
Turnips.	Clover seed.	Hay.	Horses.	Neat Cattle.	Sheep.	Hogs.	Wheat.	Barley.	Oats.	Potatoes.	Turnips.	Churches.	School Houses.	Breweries, &c.	Grist Mills.	Carding Mills.	Saw Mills.	Threshing Machines.
Bushels.	lbs.	Tons.					Wheat.	Barley.	Oats.	Potatoes.	Turnips.							
5914	1357	1234	274	1225	2540	485	547	97	1129	285	100	1	2	1	3	2	2	4
2776	80	976	170	719	1556	303	462	66	828	121	33	1	4	.	3	.	6	4
3233	.	1372	253	1053	2110	383	423	64	795	154	66	2	2	.	2	1	4	14
2238	92	783	210	774	1535	265	311	109	723	177	83	3	6	.	.	.	1	3
6585	2482	2186	396	1449	3251	426	741	209	1098	318	97	5	5	.	4	1	5	32
20,746	4011	6451	1303	5220	10,992	1862	2484	545	4573	1055	384	12	19	1	12	4	18	57





First Electoral District

NUMBER OF TOWNSHIP.	MALES.				FEMALES.				Members of Church of England.	Free Church.	Kirk of Scotland.	Presbytery of P. E. Island.	Roman Catholics.	Methodists.
	Under 16 years of age.	From 16 to 45.	From 45 to 60.	Upwards of 60.	Under 16 years of age.	From 16 to 45.	From 45 to 60.	Upwards of 60.						
No. 20,	251	169	55	24	271	187	54	21	260	111	130	269	207	47
No. 21,	207	178	36	28	216	171	32	18	217	260	89	241	40	23
No. 22,	298	218	41	25	304	225	37	21	60	391	34	101	437	52
No. 23,	346	256	56	38	317	266	66	10	132	89	131	258	462	11
No. 24, (including Peter's Island.)	499	364	96	31	442	379	95	32	215	90	224	130	1179	8
No. 33,	229	221	38	22	207	193	39	10	175	67	238	143	105	83
No. 34,	341	270	95	56	331	286	74	24	183	31	265	209	487	227
No. 67,	244	137	44	19	221	150	33	13	92	461	126	14	104	—
TOTAL,	2415	1813	461	243	2309	1857	430	149	1334	1500	1237	1365	3071	454

of Queen's County.

Kirk of Scotland.	Presbytery of P. E. Island.	Roman Catholics.	Methodists.	Baptists.	Bible Christians.	Quakers.	Jews.	Universalists.	Mormons.	Unitarians.	Other denominations.	NATIVES OF						Deaf and Dumb.	Blind.	Insane.	INDIANS.		Total number of Males.	Total number of Females.	Total number of Inhabitants.				
												England.	Scotland.	Ireland.	British Colonies.	P. E. Island.	Other Countries.				Males.	Females.							
130	269	207	47	5	2	—	—	—	—	—	1	2	64	101	57	45	762	3	3	—	—	—	—	—	—	—	501	541	1042
89	241	40	23	1	15	—	—	—	—	—	—	—	46	179	26	16	618	1	—	—	1	—	—	—	—	—	449	437	886
34	101	437	52	44	—	—	—	—	—	—	—	—	36	293	222	24	593	1	—	—	—	—	—	—	—	—	582	587	1169
131	258	462	11	52	114	—	—	—	—	—	—	6	115	213	46	28	946	7	—	—	—	—	—	—	—	—	696	659	1355
224	130	1179	—	57	38	—	—	—	—	—	—	—	95	122	53	16	1651	1	1	—	—	—	—	—	—	—	990	948	1938
238	143	105	83	2	140	—	—	—	—	—	—	—	153	94	46	8	658	—	1	—	—	—	—	—	—	—	535	483	1018
265	209	487	227	75	—	—	—	—	—	—	—	—	125	102	168	34	1044	4	1	1	1	—	—	—	—	—	762	715	1477
126	14	104	—	51	8	—	—	—	—	—	—	5	26	331	57	20	427	—	1	—	—	—	—	—	—	—	444	417	861
1237	1365	3071	454	85	317	—	—	—	—	—	1	13	660	1435	675	191	6699	17	7	2	22	27	42	—	—	—	4959	4787	9746



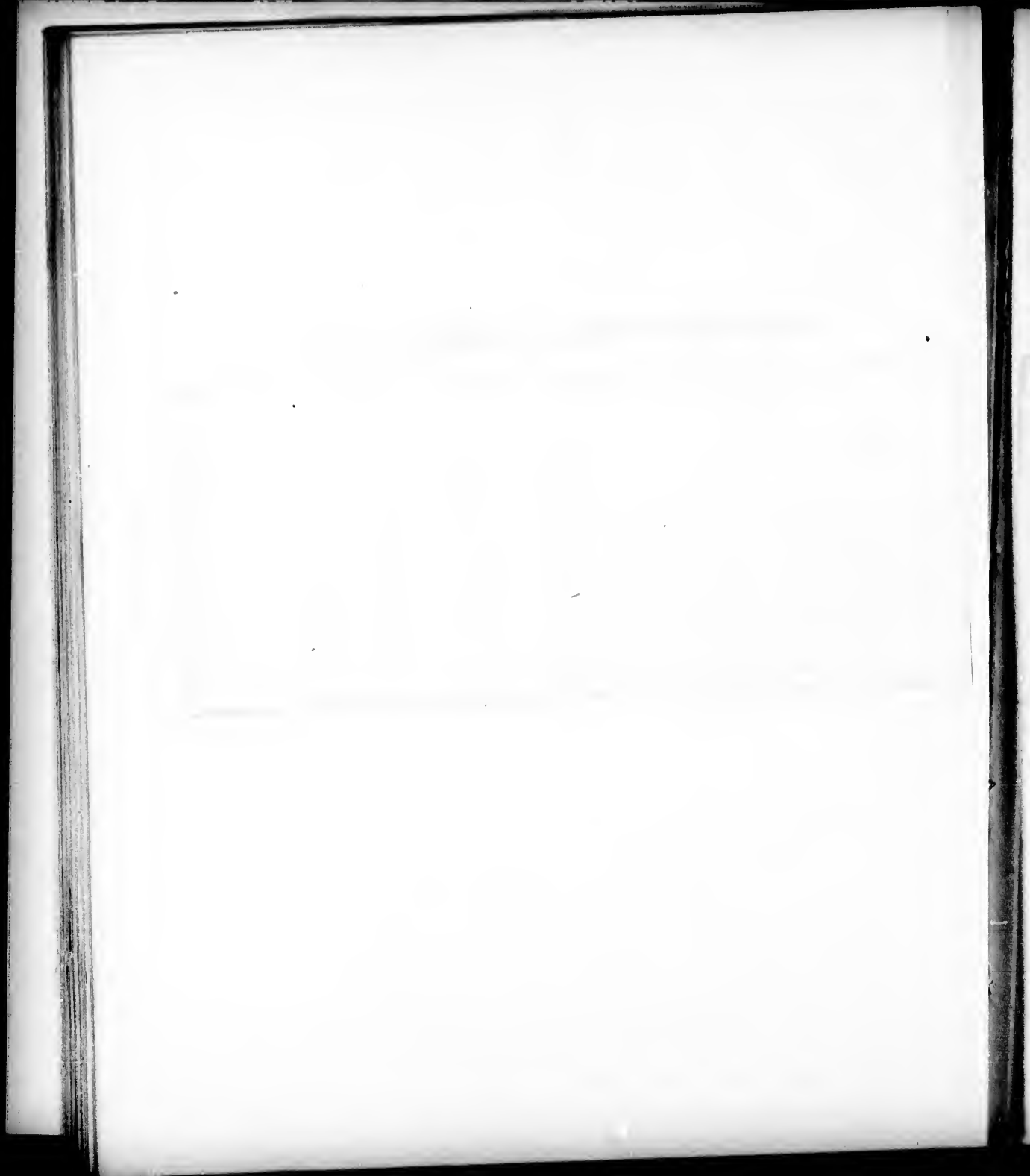


First Electoral District

NUMBER OF TOWNSHIP.	NUMBER OF ACRES HELD					Number of Acres of arable land.	CROPS RAISED IN 1847.						
	In fee simple.	Under Lease.	By written demises.	By verbal agreement.	By Occupants not freeholders or ten- ants.		Wheat.	Barley.	Oats.	Potatoes.	Turnips.	Clover Seed.	Hay.
							Bushels.	Bushels.	Bushels.	Bushels.	Bushels.	lbs.	Tons.
Township 20	1972	9784	609	512	274	4291	5939	1040	17,044	13,623	3114	1054	781
Township 21	3439	6322	..	682	232	3454	4357	1384	14,258	13,119	2733	260	739
Township 22	1646	13,625	..	345	100	2719	5025	816	10,203	15,308	3786	369	467
Township 23	1737	9287	1939	609	524	4397	8567	1531	16,998	12,711	11,298	21	811
Township 24	3833	7994	3877	2029	670	6085	9036	3983	19,626	16,584	7916	62	1092
Township 33	8187	9101	210	7526	7130	3177	25,260	11,823	7985	2859	1775
Township 34	4322	14,787	..	281	..	9762	7400	3362	33,473	22,466	12,317	2222	1603
Township 67	9296	4286	110	150	200	3029	2203	232	10,190	9881	1100	..	509
TOTAL	34,432	75,186	6745	4608	2020	41,763	49,657	15,525	147,052	115,525	50,249	6847	7777

of Queen's County.

1917.			ACRES UNDER CROP—1913.															
Turnips.	Clover Seed.	Hay.	Horses.	Neat Cattle.	Sheep.	Hogs.	Wheat.	Barley.	Oats.	Potatoes.	Turnips.	Churches.	School Houses.	Brow-eries, &c.	Grist Mills.	Carding Mills.	Saw Mills.	Threshing Machines.
Bushels.	lbs.	Tons.																
3114	1054	781	246	897	1552	348	494	72	393	166	16	.	3	2	2	1	.	8
2733	260	739	219	801	1390	316	411	82	334	145	24	3	3	1	3	.	1	2
3786	369	467	176	781	1205	272	429	61	332	197	71	2	3	.	2	1	4	8
11,298	21	811	268	1063	1926	286	719	111	381	196	59	4	3	.	2	.	1	11
7916	62	1092	455	1393	2983	576	932	272	1201	284	57	2	3	1	1	.	1	6
7985	2359	1775	354	1270	3251	395	787	238	1465	255	76	2	3	3	3	.	2	24
12,317	2222	1603	508	1801	3843	674	780	271	2164	462	161	6	5	.	4	1	1	13
1100	..	509	119	754	1314	182	203	24	701	181	34	2	2	.	1	.	4	1
50,249	6847	7777	2345	8760	17,464	3049	4755	1131	8971	1886	498	21	25	7	18	3	14	73



Second Electoral District

NUMBER OF TOWNSHIP.	MALES.				FEMALES.				Age not stated.	Members of Church of England.	Free Church.	Kirk of Scotland.	Presbytery of P. E. Island.	Roman Catholics.	Methodists.
	Under 16 years of age.	From 16 to 45.	From 45 to 60.	Upwards of 60.	Under 16 years of age.	From 16 to 45.	From 45 to 60.	Upwards of 60.							
No. 29,	371	294	50	47	358	273	58	30	—	307	84	265	105	449	243
No. 30,	251	168	82	13	259	160	52	6	—	32	119	385	2	413	6
No. 31,	317	198	46	23	328	201	41	20	—	303	226	175	33	232	108
No. 32,	310	224	57	35	229	223	66	20	—	361	—	278	11	182	196
No. 35,	291	195	55	29	251	220	36	24	2	50	35	66	8	909	35
No. 36,	273	213	53	29	269	221	46	16	—	10	—	1	6	1083	1
No. 37,	164	201	31	22	133	164	35	19	1	46	—	—	58	666	9
No. 48,	271	219	42	32	257	254	44	25	—	55	—	356	—	396	99
No. 65, (including Saint Peter's Islands)	378	275	64	42	325	285	55	28	—	131	326	479	4	358	36
TOTAL,	2626	1987	480	272	2409	2001	433	188	3	1295	790	2005	227	4688	643

	Baptists.	Bible Christians.	Quakers.
No. 29,	34	6	1
No. 30,	32	—	—
No. 31,	33	1	—
No. 32,	163	—	—
No. 35,	—	—	—
No. 36,	2	1	—
No. 37,	—	—	—
No. 48,	25	13	—
No. 65,	12	—	—
TOTAL,	61	21	1

of Queen's County.

	Roman Catholics.	Methodists.	Baptists.	Bible Christians.	Quakers.	Jews.	Universalists.	Mormons.	Unitarians.	Other denominations.	Religious profession not stated.	NATIVES OF							INDIANS.		Total number of Males.	Total number of Females.	Total number of Inhabitants.						
												England.	Scotland.	Ireland.	British Colonies.	P. E. Island.	Other Countries.	Country not stated.	Deaf and Dumb.	Blind.				Insane.	Males.	Females.			
449	239	34	6	1	—	—	—	—	—	—	8	135	111	293	20	921	1	—	—	—	—	—	—	—	762	719	1481		
413	6	52	—	—	—	—	—	—	—	—	13	9	198	323	1	450	—	10	1	2	—	—	—	—	514	477	991		
232	108	93	1	—	—	—	—	—	—	3	—	149	172	120	29	704	—	—	3	—	—	—	—	—	584	590	1174		
182	136	163	—	—	—	—	1	—	—	—	—	133	88	115	20	801	7	—	—	—	1	1	—	—	—	626	538	1164	
909	35	—	—	—	—	—	—	—	—	—	—	15	71	252	3	759	3	—	—	—	—	—	—	—	—	570	531	1103	
1083	1	2	1	—	—	—	—	—	—	16	—	4	56	452	5	601	2	—	—	—	2	—	—	—	—	568	552	1120	
666	—	—	—	—	—	—	—	—	—	—	—	25	45	82	12	606	—	—	—	2	1	—	—	—	—	418	351	770	
396	99	25	13	—	—	—	—	—	—	—	—	24	96	185	22	816	1	—	—	—	—	—	—	—	—	589	603	1192	
358	36	12	—	—	—	—	—	—	—	—	6	42	239	168	12	983	3	—	5	4	—	—	—	—	—	762	697	1459	
4688	643	61	21	1	—	—	1	—	—	51	16	536	1076	1990	124	6641	17	15	11	6	10	—	—	—	28	27	5393	5058	10454





Second Electoral District

NUMBER OF TOWNSHIP.	NUMBER OF ACRES HELD					Number of Acres of arable land.	CROPS RAISED IN 1847.						
	In fee simple.	Under Lease.	By written demises.	By verbal agreement.	By Occupants not freeholders or ten- ants.		Wheat.	Barley.	Oats.	Potatoes.	Turnips.	Sec.	Hay.
							Bushels.	Bushels.	Bushels.	Bushels.	Bushels.	lbs.	Tons.
Township 29	554	10,556	2334	3444	25	5469	4270	3003	17,696	18,085	4215	98 ³	1004
Township 30	2637	3613	100	.	5159	2660	1674	631	8,113	10,189	110	.	204
Township 31	5417	8069	307	1070	45	4086	4041	576	12,018	13,217	3506	24	774
Township 32	5828	8018	153	.	793	5653	5976	1694	15,511	21,004	4635	35	1424
Township 35	4330	11,654	1545	1039	.	4421	2899	1515	18,165	12,049	2896	137	85 ⁵
Township 36	100	10,487	1715	1271	280	2792	1944	503	11,856	9,626	693	20	296
Township 37	8491	2432	589	1153	959	2489	2426	968	8,088	9,522	764	.	985
Township 48	2667	12,366	.	282	.	4427	5585	2011	20,795	24,283	3568	122	1121
Township 65	3961	11,211	815	1461	450	5491	5607	1623	16,814	28,380	2355	18	873
TOTAL	34,985	78,406	7558	9720	7711	37,488	34,422	12,524	139,056	146,355	22,772	1339	7536

of Queen's County.

			ACRES UNDER CROP—1848.																
Horses.	Neat Cattle.	Sheep.	Hogs.	ACRES UNDER CROP—1848.					Churches	School Houses.	Breweries, &c.	Grist Mills.	Carding Mills.	Saw Mills.	Threshing Machines.				
				Wheat.	Barley.	Oats.	Potatoes.	Turnips.											
215	983	1004		321	1094	2152	467	503	127	1116	317	31	3	4	.	4	1	4	11
110	..	204		114	523	755	123	163	75	581	244	1	.	1	.	2	1	1	.
506	24	774		220	861	1709	333	411	46	756	219	101	3	2	1	3	1	6	2
635	35	1424		322	1081	1983	376	621	119	1078	388	65	3	4	.	5	1	5	7
896	137	855		291	1008	1584	354	290	126	1063	247	48	.	4	.	1	.	1	4
693	26	296		198	690	1014	315	200	46	773	245	27	2	3	.	1	.	2	.
764	..	985		194	709	1095	419	233	113	532	174	11	1	2	.	2	.	3	1
568	122	1121		244	905	1659	546	477	126	919	391	51	3	2	.	2	1	5	8
2355	18	873		308	1002	2079	340	543	128	1014	412	51	3	6	.	1	.	2	1
772	1339	7536		2212	7873	14,030	3073	3441	966	7832	2667	386	18	28	1	21	5	31	34



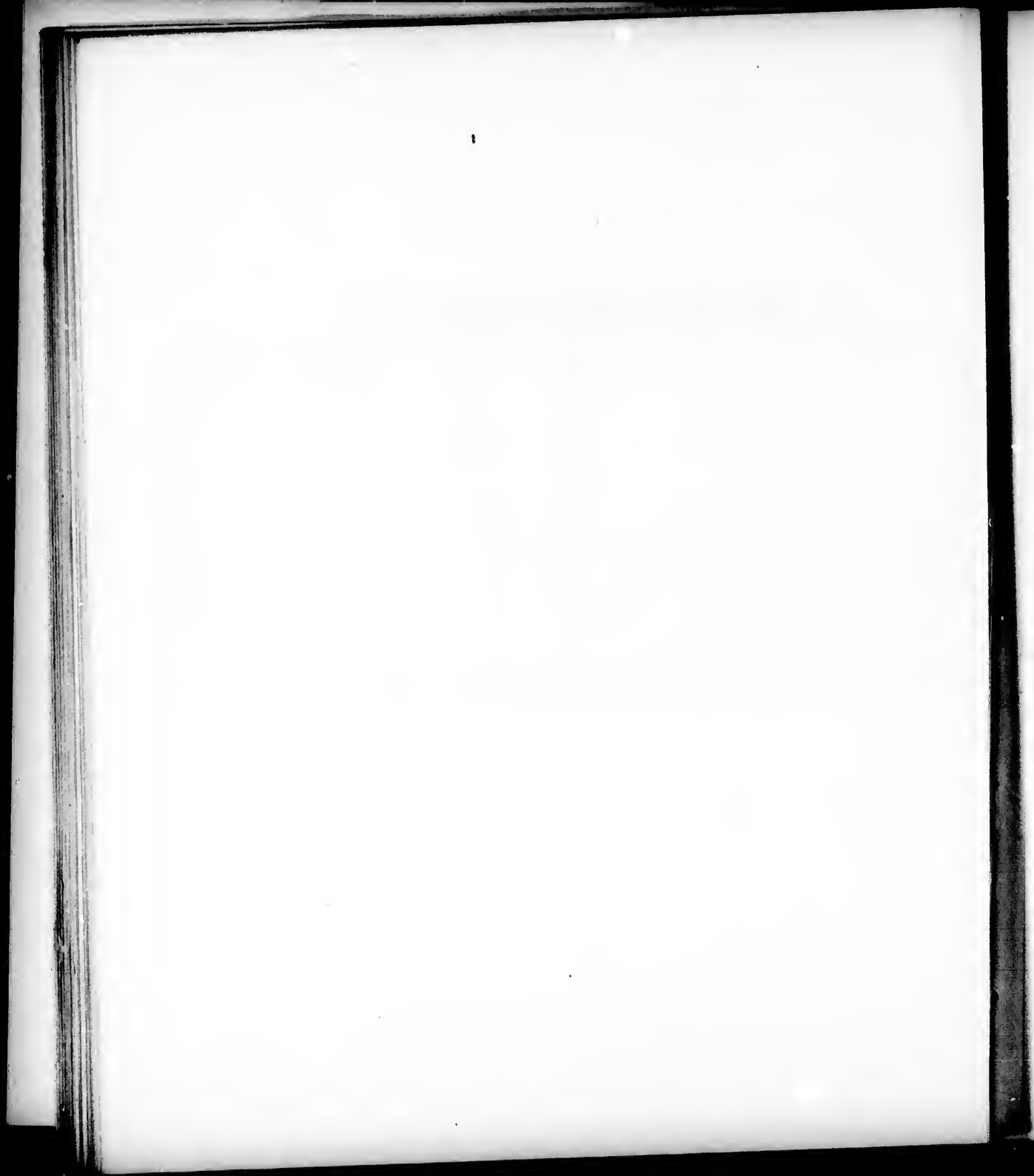


Third Electoral District

NUMBER OF TOWNSHIP.	MALES.				FEMALES.				Members of Church of England.	Free Church.	Kirk of Scotland.	Presbytery of P. E. Island.	Roman Catholics.	Methodists.
	Under 16 years of age.	From 16 to 45.	From 45 to 60.	Upwards of 60.	Under 16 years of age.	From 16 to 45.	From 45 to 60.	Upwards of 60.						
No. 49,	384	292	62	47	350	308	38	30	128	7	264	—	716	250
No. 50,	316	352	62	33	324	303	56	20	205	6	465	—	576	69
No. 57,	472	335	102	54	466	352	85	53	16	98	1311	—	415	—
No. 58,	241	203	47	17	234	191	45	12	3	161	670	—	132	—
No. 60,	144	101	22	18	126	111	27	13	3	13	545	—	—	—
No. 62,	203	138	25	16	178	138	23	23	—	223	498	—	16	—
Governor's Island,	—	—	2	—	1	1	—	—	—	—	—	—	4	—
TOTAL,	1760	1421	322	185	1679	1404	272	151	355	500	3753	—	1859	319

of Queen's County.

Presbytery of P. E. Island.	Roman Catholics.	Methodists.	Baptists.	Bible Christians.	Quakers.	Jews.	Universalists.	Mormons.	Unitarians.	Other denominations.	NATIVES OF						Country not stated.	Deaf and Dumb.	Blind.	Insane.	INDIANS.		Total number of Males.	Total number of Females.	Total number of Inhabitants.
											England.	Scotland.	Ireland.	British Colonies.	P. E. Island.	Other Countries.					Males.	Females.			
—	716	250	98	48	—	—	—	—	—	—	45	75	173	63	1127	28	—	—	1	4	—	—	785	726	1511
—	576	69	27	112	—	—	—	—	—	6	34	129	68	10	1220	5	—	—	—	2	—	—	763	703	1466
—	415	—	63	16	—	—	—	—	—	—	4	463	138	27	1286	1	—	1	3	3	—	—	963	956	1919
—	132	—	22	—	—	—	—	—	—	—	6	264	72	12	633	—	—	—	12	12	—	—	508	480	988
—	—	—	1	—	—	—	—	—	—	—	4	178	—	10	370	—	—	—	3	3	—	—	235	277	562
—	16	—	7	—	—	—	—	—	—	—	1	220	3	43	475	2	—	—	1	3	—	—	382	362	744
—	4	—	—	—	—	—	—	—	—	—	—	—	3	1	—	—	—	—	—	—	—	—	2	2	4
—	1859	318	218	176	—	—	—	—	—	6	94	1329	457	166	5111	36	1	1	5	17	—	—	3688	3506	7194





Third Electoral District

NUMBER OF TOWNSHIP.	NUMBER OF ACRES HELD					Number of Acres of arable land.	CROPS RAISED IN 1847.							
	In fee simple.	Under Lease.	By written demise.	By verbal agreement.	By Occupants not freeholders or ten- ants.		Wheat.	Barley.	Oats.	Potatoes.	Turnip.	Clover Seed.	Hay.	
							Bushels.	Bushels.	Bushels.	Bushels.	Bushels.	lbs.	Tons.	
Township 49	7090	7012	..	463	1137	5473	7003	1374	21,436	13,036	1671	368	1493	
Township 50	8013	6237	..	437	707	400	5757	6519	1924	23,223	15,539	2133	..	1590
Township 57	8293	10,215	..	110	467	330	6342	5832	1325	30,180	24,535	127	..	1209
Township 58	5261	6076	425	..	2753	2433	494	11,574	12,465	91	..	393
Township 60	4124	1947	180	1200	2097	1830	165	6084	5009	137	..	284
Township 62	2120	4287	77	1763	1900	2324	467	7648	5162	355	100	359
TOTAL	34,910	35,774	672	2319	4830	24,322	25,996	5749	100,145	80,816	4564	468	5333	

of Queen's County.

	Clover Seed.	Hay.
lbs.	lbs.	Tons.
1	268	1493
3	..	1590
27	..	1209
01	..	398
37	..	224
55	100	359
64	468	5333

Horses.	Neat Cattle.	Sheep.	Hogs.	Acres under Crop—1848.					Charches	School Houses.	Breweries, &c.	Grist Mills.	Carding Mills.	Saw Mills.	Threshing Machines.
				Wheat.	Barley.	Oats.	Potatoes	Turnips							
332	1201	2014	452	638	109	1155	230	61	3	4	.	4	3	3	8
346	1373	2400	512	565	151	1109	234	40	2	5	.	3	1	1	.
364	1493	2379	599	439	124	1461	347	.	3	4	.	4	.	3	1
164	687	1563	235	197	56	769	164	6	.	2	.	1	.	1	.
97	419	745	156	131	24	412	103	.	.	2	.	.	.	1	.
111	537	1113	191	184	37	394	104	2	.	2	.	2	.	3	.
1414	5713	10,714	1945	2254	501	5300	1332	109	8	19	.	14	4	12	9





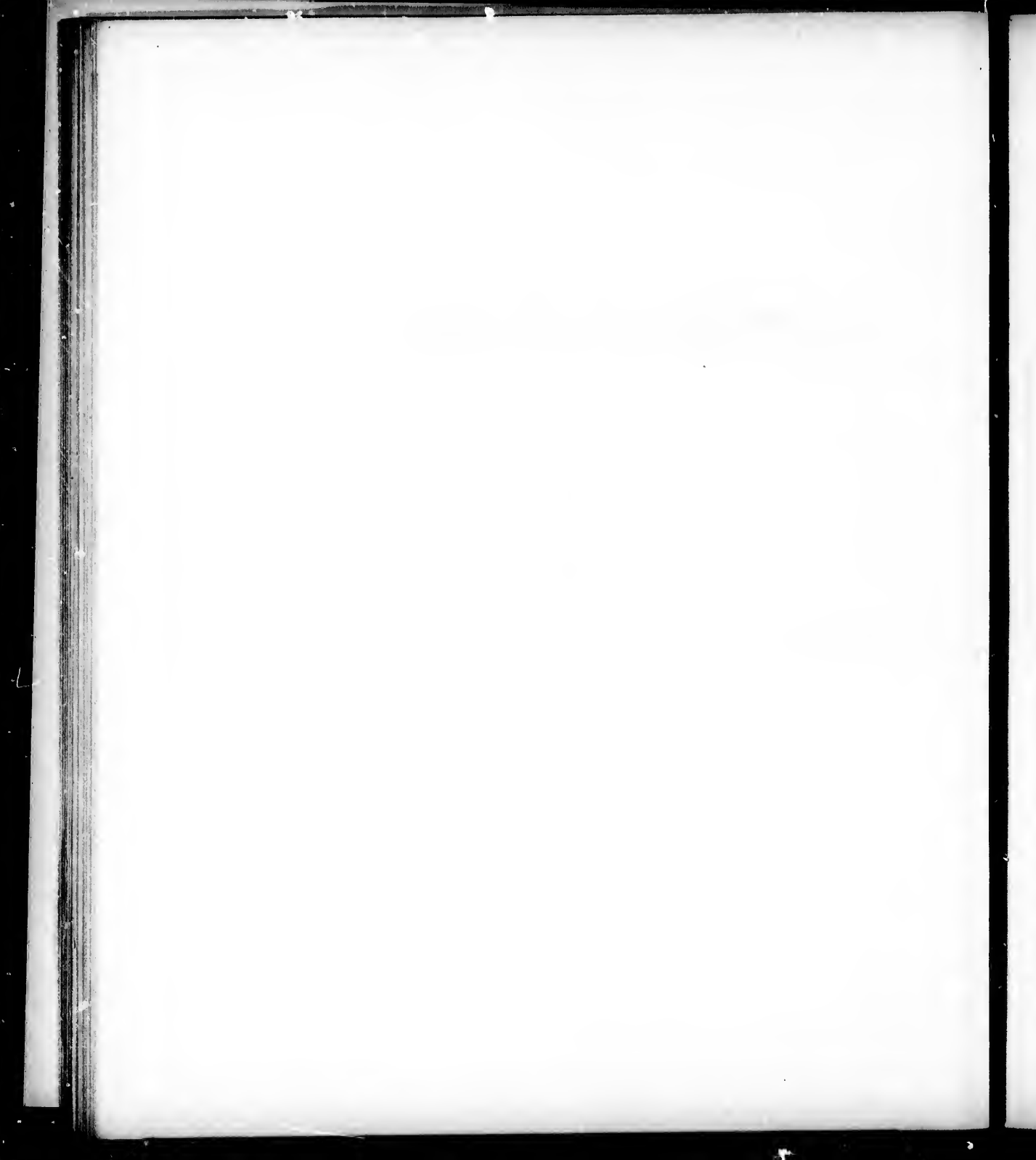
First Electoral District

NUMBER OF TOWNSHIP.	MALES.				FEMALES.				Age not stated.	Members of Church of England.	Free Church.	Kirk of Scotland.	Presbytery of P. E. Island	Roman Catholics.	Methodists.	Baptists.
	Under 16 years of age.	From 16 to 45.	From 45 to 60.	Upwards of 60.	Under 16 years of age.	From 16 to 45.	From 45 to 60.	Upwards of 60.								
No. 43,	182	143	39	12	178	158	38	17	11	6	—	7	309	456	—	—
No. 44,	236	180	35	17	183	200	33	13	—	43	—	16	15	820	3	10
No. 45,	250	221	42	21	196	218	46	8	—	15	—	13	8	951	5	23
No. 46,	150	116	26	13	150	115	24	10	2	2	—	8	—	572	1	289
No. 47,	213	226	50	25	230	237	47	18	1	8	—	38	—	699	—	—
Total,	1031	886	192	83	937	928	188	66	14	74	—	82	332	3498	9	325

ct

of King's County.

Airk of Scotland.	Presbytery of P. E. Island	Roman Catholics.	Methodists.	Baptists.	Bible Christians.	Quakers.	Jews.	Universalists.	Mormons.	Unitarians.	Other denominations.	Religious profession not stated.	NATIVES OF							INDIANS.		Total number of Males.	Total number of Females.	Total number of Inhabitants.					
													England.	Scotland.	Ireland.	British Colonies.	P. E. Island.	Other Countries.	Country not stated.	Deaf and Dumb.	Blind.				Insane.	Males.	Females.		
7	309	456	—	—	—	—	—	—	—	—	—	—	4	26	16	28	701	3	—	1	—	—	—	—	—	—	376	391	778
16	15	820	3	—	—	—	—	—	—	—	—	—	15	18	110	60	694	—	—	—	—	—	—	—	—	—	468	429	897
13	8	951	5	10	—	—	—	—	—	—	—	—	3	39	34	43	819	4	—	—	—	—	—	—	—	—	538	474	1012
8	—	572	1	23	—	—	—	—	—	—	—	—	2	43	44	28	453	3	—	—	—	—	—	—	—	—	305	299	606
38	—	699	—	289	—	—	—	—	—	—	12	—	11	73	40	17	906	—	3	—	—	—	—	—	—	—	514	532	1047
82	332	3498	9	322	—	—	—	—	—	—	12	1	35	279	244	176	3583	10	3	1	2	7	4	6	2201	2125	4340		





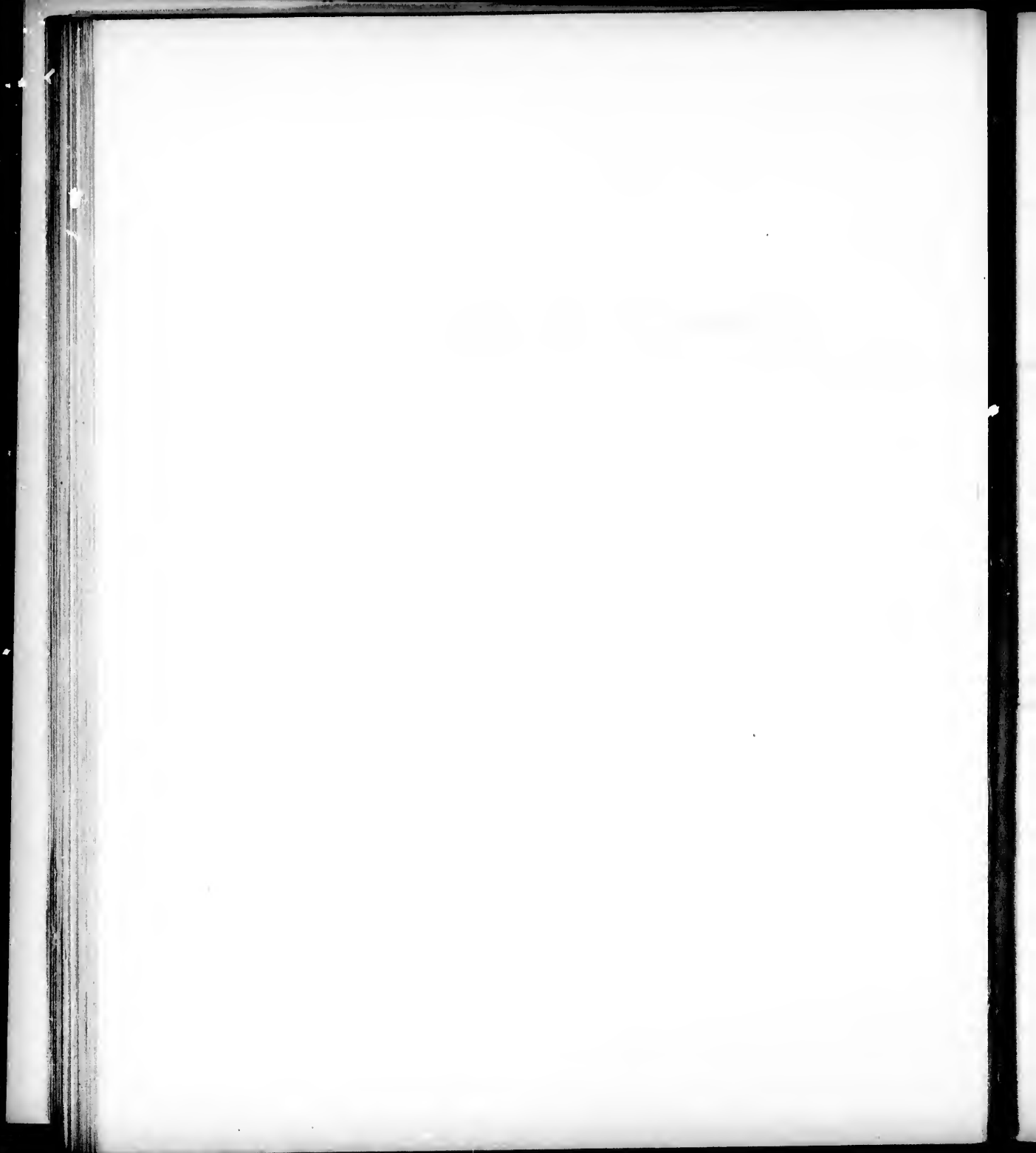
First Electoral District

NUMBER OF TOWNSHIP.	NUMBER OF ACRES HELD					Number of Acres of arable land.	CROPS RAISED IN 1847.						
	In fee simple.	Under Lease.	By written demises.	By verbal agreement	By Occupants not freeholders or ten- ants.		Wheat. Bushels.	Barley. Bushels.	Oats. Bushels.	Potatoes. Bushels.	Turnips. Bushels.	Clover Seed. lbs.	Hay. Tons.
Township 43	3330	3619	. .	491	1243	2179	2180	1931	10,491	7914	1608	68	516
Township 44	7203	1153	100	50	1242	1797	2432	2058	12,910	6696	2049	. .	488
Township 45	3143	731	7037	2518	2973	1702	10,037	6021	262	. .	411
Township 46	2551	1745	570	. .	4050	1698	1391	1099	9933	3359	209	. .	251
Township 47	5713	260	5263	1250	2330	4288	3576	3025	23,665	7826	1170	. .	945
TOTAL	21,933	7515	5933	1791	15,922	4,480	11,652	10,415	66,976	31,916	5298	68	2611

of King's County.

Clover Seed.	Hay.
lbs.	Tons.
68	516
••	488
••	411
••	251
••	945
68	2611

Horses.	Neat Cattle.	Sheep.	Hogs.	ACRES UNDER CROP—1848.					Churches	School Houses.	Drewo-ries, &c.	Grist Mills.	Carding Mills.	Saw Mills.	Threshing Machines.
				Wheat.	Barley.	Oats.	Potatoes	Turnips							
181	739	1258	359	195	129	638	129	45	1	1	•	•	•	2	•
178	644	1194	336	205	151	526	133	36	2	4	•	2	•	1	•
210	612	1273	232	190	172	699	118	11	1	1	•	1	•	•	•
131	555	1136	179	130	105	526	117	14	•	1	•	•	•	2	1
301	1179	2325	512	170	153	1360	182	3	4	4	•	4	•	1	2
1001	3759	7186	1618	890	710	3719	679	109	8	11	•	7	•	6	3





Second Electoral District

NUMBER OF TOWNSHIP.	MALES.				FEMALES.				Age not stated.	Members of Church of England.	Free Church.	Kirk of Scotland.	Presbytery of P. E. Island.	Roman Catholics.	Methodists.	Baptists.
	Under 16 years of age.	From 16 to 45.	From 45 to 60.	Upwards of 60.	Under 16 years of age.	From 16 to 45.	From 45 to 60.	Upwards of 60.								
No. 38,	106	90	30	9	119	103	15	11	—	22	—	—	163	297	—	1
No. 39,	97	99	25	14	90	88	19	8	—	1	—	—	122	309	—	11
No. 40,	183	131	46	16	161	134	25	14	—	19	—	9	371	300	—	—
No. 41,	222	163	42	18	183	161	26	18	—	20	19	35	148	603	—	11
No. 42,	141	113	22	14	138	110	27	9	12	—	—	1	9	573	—	—
No. 55,	183	158	40	20	195	152	40	22	—	12	62	79	10	609	11	29
No. 56,	179	165	36	19	173	150	39	22	—	74	11	12	258	369	3	56
Boughton Island,	13	12	5	1	8	20	8	1	—	—	—	—	42	26	—	—
TOTAL,	1124	931	246	111	1067	921	199	105	14	149	92	136	1123	3086	14	108

istrict

of King's County.

Baptists.	Bible Christians.	Quakers.	Jews.	Universalists.	Mormons.	Unitarians.	Other denominations.	Religious profession not stated.	NATIVES OF										INDIANS.		Total number of Males.	Total number of Females.	Total number of Inhabitants.									
									England.	Scotland.	Ireland.	British Colonies.	P. E. Island.	Other Countries.	Country not stated.	Deaf and Dumb.	Blind.	Inane.	Males.	Females.												
1	—	—	—	—	—	—	—	9	10	17	44	25	385	12	—	—	—	—	—	—	—	—	—	235	248	483						
—	—	—	—	—	—	—	—	—	1	8	60	32	331	12	—	—	—	—	—	—	—	—	—	—	—	235	207	440				
9	—	—	—	—	—	—	—	—	13	13	108	62	513	1	—	—	1	1	—	—	19	28	—	—	—	—	395	360	755			
35	—	—	—	—	—	—	—	—	8	130	32	51	611	1	—	—	1	1	—	—	—	—	—	—	—	—	—	445	391	836		
1	—	—	—	—	—	—	—	2	3	17	39	—	517	8	—	—	1	1	—	—	—	—	—	—	—	—	—	290	284	586		
79	—	—	—	—	—	—	—	—	14	141	5	5	647	—	—	—	1	1	—	—	—	—	—	—	—	—	—	—	401	419	812	
12	—	—	—	—	—	—	—	—	30	39	33	38	641	—	—	—	1	1	—	—	—	—	—	—	—	—	—	—	399	384	783	
—	—	—	—	—	—	—	—	—	—	1	1	1	65	—	—	—	—	—	—	—	—	—	—	—	—	—	—	—	—	31	37	68
36	1123	3086	14	108	—	—	—	10	79	366	322	217	3710	16	8	4	4	6	19	26	2431	2318	4763									





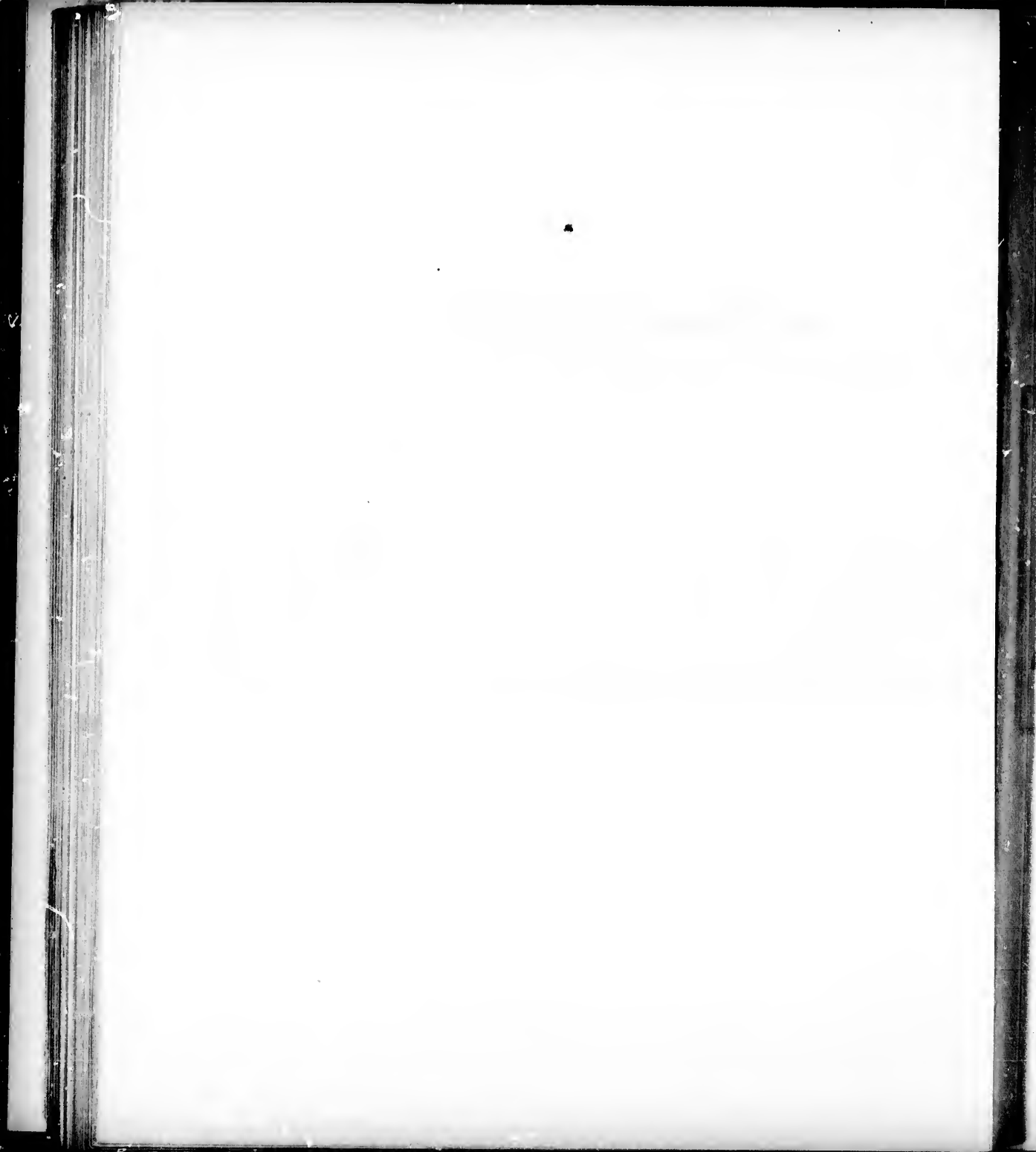
Second Electoral District

NUMBER OF TOWNSHIP.	NUMBER OF ACRES HELD					Number of Acres of arable land.	CROPS RAISED IN 1847.						
	In fee simple.	Under Lease.	By written demise.	By verbal agreement.	By Occupants not freeholders or tenants.		Wheat. Bushels.	Barley. Bushels.	Oats. Bushels.	Potatoes. Bushels.	Turnips. Bushels.	Clover Seed. lbs.	Hay. Tons.
Township 38	6421	1691	150	213	814	1480	2046	929	6357	6761	1218	95	538
Township 39	2691	249	692	777	..	2165	1692	939	6917	5438	985	27	250
Township 40	4254	1170	609	2396	390	1969	2770	890	9830	8833	1763	66	321
Township 41	537	2518	..	3810	..	1609	2304	1765	10,392	8447	1397	4	281
Township 42	300	872	..	880	3163	2077	1123	1681	9051	5485	418	18	261
Township 55	11,050	50	875	150	150	2204	2520	1544	9633	6579	468	160	613
Township 56	342	6821	..	520	..	1928	2411	1189	8612	5749	702	..	591
Boughton Island	..	453	124	255	152	480	414	51
TOTAL,	25,598	13,824	2326	8746	4517	13,556	16,111	9089	61,262	47,706	6951	370	2896

of King's County.

	Clover Seed.	Hay.
	lbs.	Tons.
8	95	538
5	27	250
3	66	321
7	4	281
8	18	261
8	160	613
2	..	581
.	..	51
1	370	2896

ACRES UNDER CROP—1848.															
Horses.	Neat Cattle.	Sheep.	Hogs.	Wheat.	Barley.	Oats.	Potatoes.	Turnips.	Churches.	School Houses.	Breweries, &c.	Grist Mills.	Carding Mills.	Saw Mills.	Threshing Machines.
127	505	950	319	130	63	302	109	6	2	2	.	1	.	3	1
118	436	705	281	142	74	358	106	31	.	1	.	1	1	.	1
154	564	840	375	243	81	532	140	26	1	3	.	2	.	1	.
190	653	1245	313	175	110	556	131	34	1	2	1	.	.	2	.
151	504	981	236	95	119	464	95	21	.	2	.	1	1	1	1
167	692	1110	249	203	91	468	111	29	2	2	.	.	.	1	5
159	647	1167	246	195	82	432	117	33	1	.	.	2	.	2	5
18	48	103	30	19	7	25	6	5
1082	4049	7101	2049	1210	627	3137	815	185	7	12	1	7	2	10	13





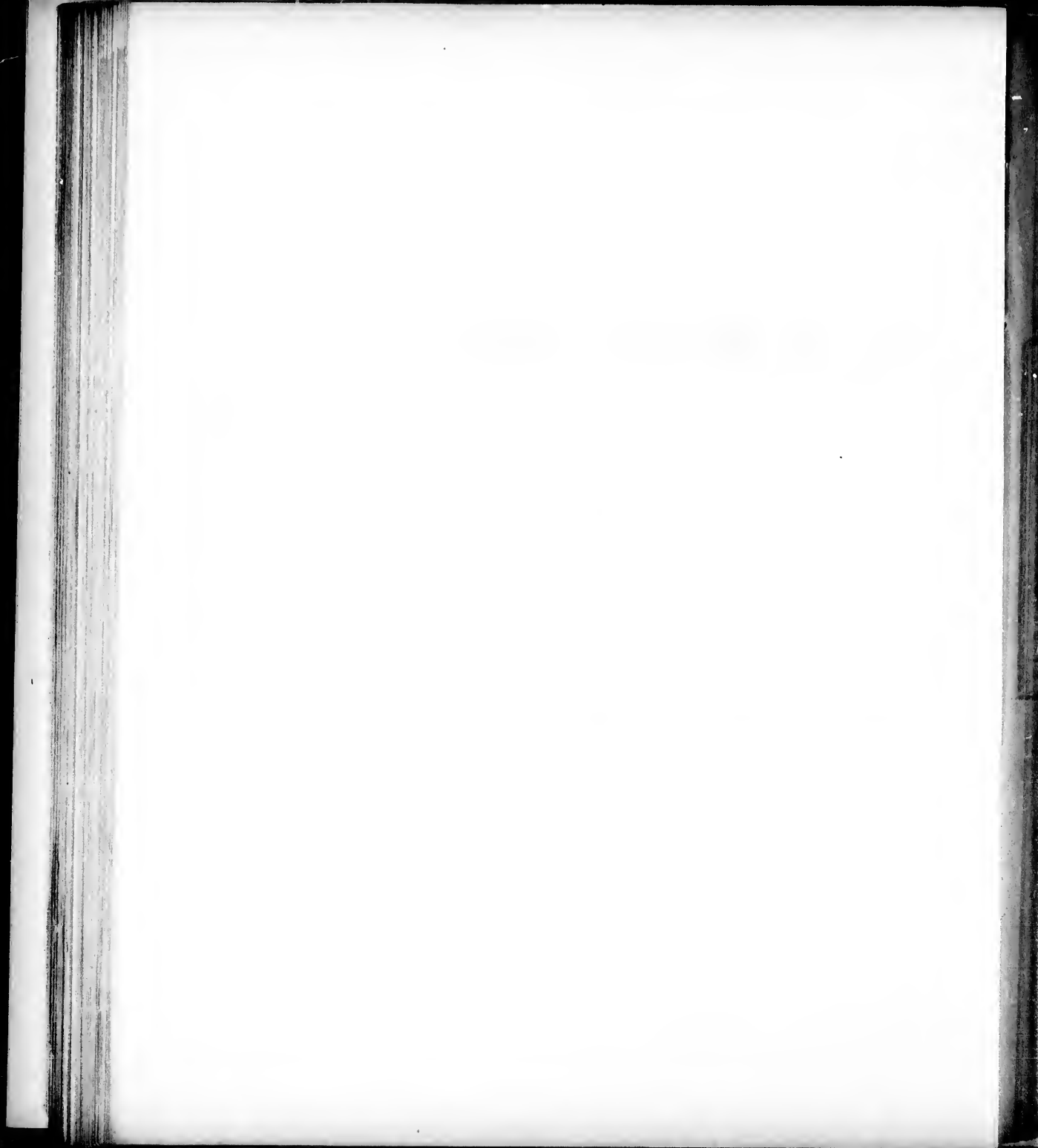
Third Electoral District

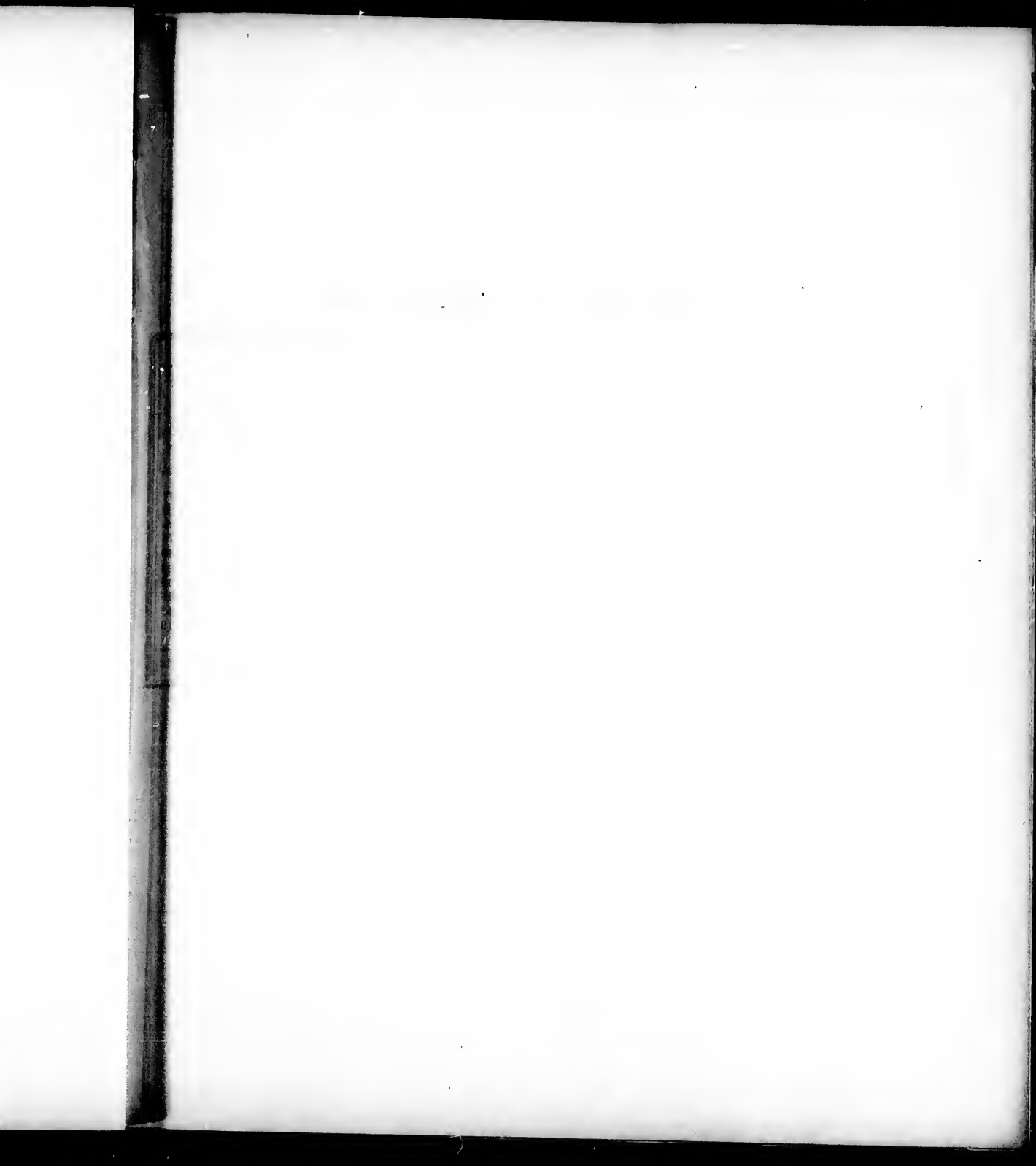
NUMBER OF TOWNSHIP.	MALES.				FEMALES.				Members of Church of England.	Free Church.	Kirk of Scotland.	Presbytery of P. E. Island.	Roman Catholics.	Methodists.
	Under 16 years of age.	From 16 to 45.	From 45 to 60.	Upwards of 60.	Under 16 years of age.	From 16 to 45.	From 45 to 60.	Upwards of 60.						
No. 54,	69	68	12	12	76	58	15	6	17	16	14	10	259	—
No. 53,	104	100	27	12	132	100	20	9	32	28	92	10	251	—
No. 52,	160	125	34	22	173	144	30	7	36	95	179	—	205	—
No. 51,	221	148	46	12	209	149	37	9	9	67	173	—	397	10
No. 66,	79	51	13	9	84	60	16	5	—	22	51	—	221	—
No. 59,	217	186	32	31	184	180	34	24	39	481	101	—	62	58
No. 61,	113	89	19	11	138	92	16	14	21	22	22	—	322	—
No. 63,	100	84	18	7	102	78	15	5	7	79	135	41	118	—
No. 64,	309	195	47	32	312	218	33	27	68	247	381	—	57	50
Panmure Island,	2	2	1	1	2	2	1	1	—	6	—	—	6	—
TOTAL,	1374	1048	249	149	1412	1081	217	107	229	1033	1148	61	1898	118

istrict

of King's County.

	Presbytery of P. E. Island.	Roman Catholics.	Methodists.	Baptists.	Bible Christians.	Quakers.	Jews.	Universalists.	Mormons.	Unitarians.	Other denominations.	NATIVES OF							Deaf and Dumb.	Blind.	Insane.	INDIANS.		Total number of Males.	Total number of Females.	Total number of Inhabitants.			
												England.	Scotland.	Ireland.	British Colonies.	P. E. Island.	Other Countries.	Males.				Females.							
14	10	239	—	—	—	—	—	—	—	—	—	13	62	9	11	221	—	1	1	1	—	—	—	—	—	—	161	155	316
72	10	251	—	91	—	—	—	—	—	—	—	9	98	44	26	326	1	2	—	—	—	—	—	—	—	243	261	504	
79	—	205	—	114	—	—	—	—	—	—	66	21	192	33	30	419	—	—	1	—	—	—	—	—	—	341	354	695	
73	—	397	10	164	11	—	—	—	—	—	—	3	179	182	34	433	—	—	—	—	—	—	—	—	—	427	404	831	
51	—	221	—	23	—	—	—	—	—	—	—	—	69	95	6	147	—	—	—	—	—	—	—	—	—	152	165	317	
01	—	62	58	91	27	—	—	—	—	—	29	24	409	10	17	423	5	—	—	—	—	—	—	—	—	466	422	888	
22	—	322	—	7	96	—	—	—	—	—	—	2	30	19	89	46	307	1	—	—	—	—	—	—	—	232	260	492	
35	41	118	—	17	12	—	—	—	—	—	—	10	57	34	33	273	2	—	—	—	—	—	—	—	—	209	200	409	
81	—	57	50	53	212	—	—	—	—	—	—	5	117	15	53	900	—	—	—	—	—	—	—	—	—	583	590	1173	
—	—	6	—	—	—	—	—	—	—	—	—	—	—	4	—	8	—	—	—	—	—	—	—	—	—	11	8	19	
18	61	1898	118	560	458	—	—	—	—	—	102	227	1277	511	256	3357	9	4	2	5	5	2	2825	2819	5644				



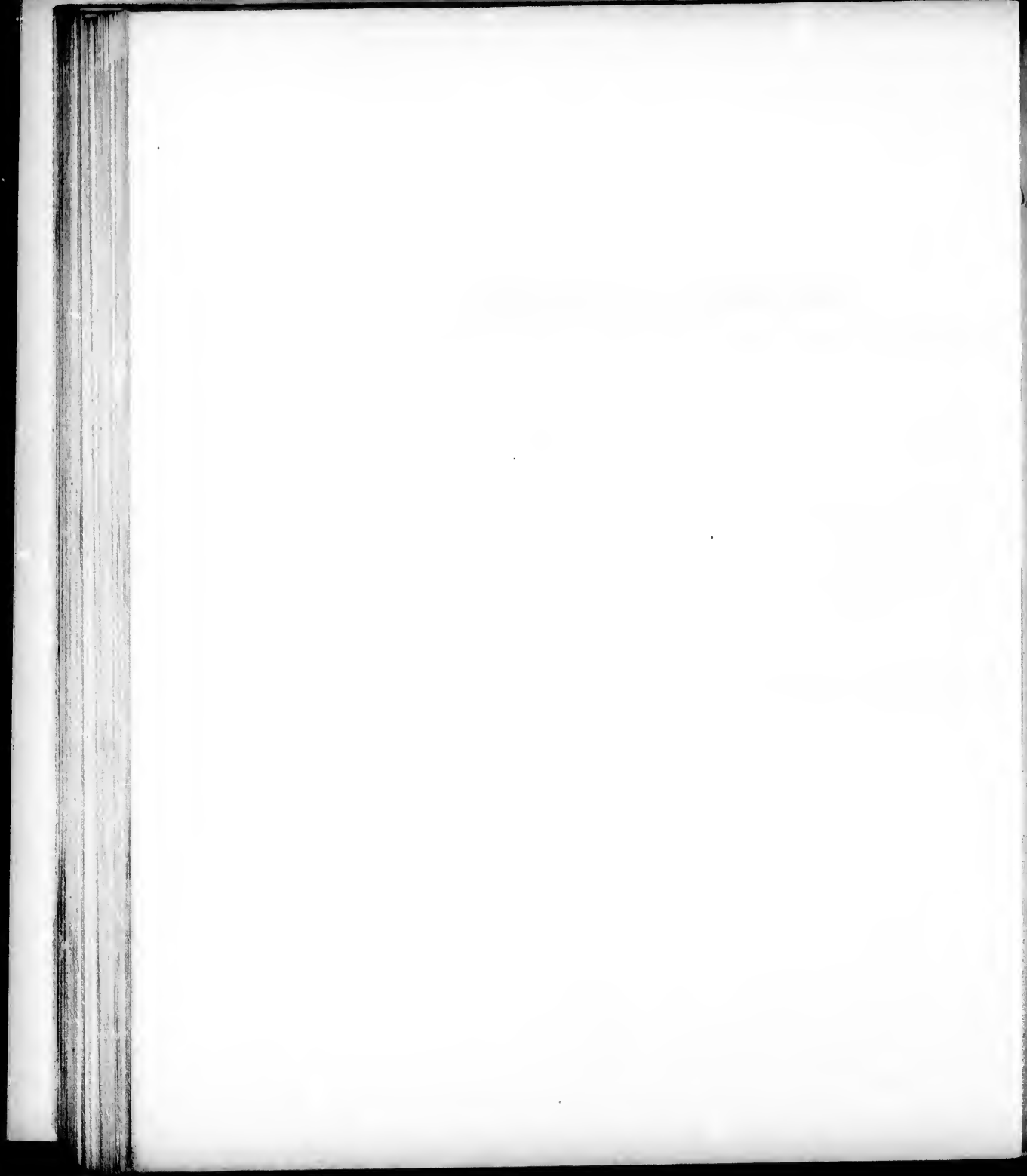


Third Electoral District

NUMBER OF TOWNSHIP.	NUMBER OF ACRES HELD					Number of Acres of arable land.	CROPS RAISED IN 1847.						
	In fee simple.	Under Lease.	By written demises.	By verbal agreement.	By Occupants not freeholders or tenants.		Wheat.	Barley.	Oats.	Potatoes.	Turnips.	Clover Seed.	Hay.
							Bushels.	Bushels.	Bushels.	Bushels.	Bushels.	lbs.	Tons.
Township 51	4244	7532	300	200	90	1855	2026	545	7422	11,850	191	30	337
Township 52	4060	899	..	192	4377	1815	2078	761	5566	9317	539	10	313
Township 53	1471	2941	..	652	1589	1567	1804	694	5951	7962	746	39	296
Township 54	2585	1242	195	100	1755	764	738	414	2494	3270	462	..	174
Township 59	2445	9281	300	260	412	1473	1916	847	8914	15,322	475	50	339
Township 61	510	4921	200	1152	1720	623	3961	7932	412	50	167
Township 63	1785	2517	389	1378	1892	1933	6506	7456	645	..	193
Township 64	3107	5120	784	904	366	2269	4115	1403	12,580	8331	2091	756	457
Township 66	100	100	3983	540	753	161	2661	4209	30	1	141
Panmure Island	100	..	100	60	142	38	320	550	65	..	19
TOTAL,	20,407	34,553	1879	2308	12,961	12,873	17,184	7,419	56,375	76,199	5656	936	2438

of King's County.

1847.			ACRES UNDER CROP—1848.															
Turnips.	Clover Seed.	Hay.	Cows.	Neat Cattle.	Sheep.	Hogs.	Wheat.	Barley.	Oats.	Potatoes.	Turnips.	Churches.	School Houses.	Breweries, &c.	Grist Mills.	Carding Mills.	Saw Mills.	Threshing Machines.
Bushels.	lbs.	Tons.																
191	30	337	125	491	898	156	231	50	502	188	6	.	2	.	2	.	2	1
539	10	313	115	481	677	205	185	53	362	142	14	2	3	.	2	.	6	.
746	39	296	100	440	817	207	160	50	355	96	21	1	.	.	1	.	1	1
462	.	174	63	229	359	124	70	32	154	40	12	.	1	1	1	.	4	.
475	50	339	136	689	998	279	164	66	498	222	6	.	3	.	2	2	3	3
412	50	167	86	322	496	214	142	44	264	92	17	1	2	.	1	.	3	2
645	.	195	86	369	496	278	168	103	375	93	13	1	1	.	1	.	.	6
2091	756	457	202	790	1811	316	434	108	683	108	53	4	5	.	3	.	4	7
30	1	141	46	202	304	83	84	16	226	86	6	1	.
65	.	19	6	16	38	12	9	2	13	5
5656	936	2438	965	4029	6894	1904	1647	524	3152	1072	148	9	17	1	13	2	24	20





Abstract of the Returns of the

ELECTORAL DISTRICT, &c.	MALES.				FEMALES.				Age not stated.	Members of Church of England.	Free Church.	Kirk of Scotland.	Presbytery of P. E. Island.	Roman Catholics.	Methodists.	Baptists.	Bible Christians.	Quakers.
	Under 16 years of age.	From 16 to 45.	From 45 to 60.	Upwards of 60.	Under 16 years of age.	From 16 to 45.	From 45 to 60.	Upwards of 60.										
PRINCE'S COUNTY.																		
First District,	1471	1102	233	122	1387	1028	204	64	12	619	23	46	1137	3410	128	2	182	—
Second District,	910	779	157	89	843	744	142	70	—	539	13	37	956	1904	50	178	54	—
Third District,	1360	994	255	106	1194	886	232	64	—	388	1	657	797	1753	1058	318	49	—
Prince T. & Roy.,	96	101	17	24	77	100	18	14	—	19	—	—	389	29	9	—	—	—
TOTAL,	3837	2976	662	341	3501	2858	596	214	13	1565	37	740	3279	7096	1245	51	285	—
QUEEN'S COUNTY.																		
First District,	2415	1813	461	243	2309	1857	430	149	—	1331	1500	1237	1365	3071	454	368	317	—
Second District,	2626	1937	480	272	2409	2001	433	188	3	1295	790	2005	227	4688	643	660	21	—
Third District,	1760	1421	322	185	1679	1404	272	151	—	355	508	3753	—	1859	319	218	176	—
Char. T. & Roy.,	982	1104	139	94	964	1226	110	98	—	1420	55	654	33	1590	853	87	15	—
TOTAL,	7783	6325	1402	794	7361	6488	1245	586	3	4404	2853	7649	1625	11,208	2269	1347	529	—
KING'S COUNTY.																		
First District,	1031	886	192	88	937	928	188	66	14	74	—	82	332	3498	9	322	—	—
Second District,	1124	931	246	111	1067	921	199	105	14	149	92	136	1123	3086	14	108	—	—
Third District,	1374	1048	249	149	1412	1081	217	107	—	329	1063	1148	61	1898	118	560	458	—
George T. & Roy.,	156	152	35	14	149	141	22	9	—	109	26	140	16	361	1	19	3	—
TOTAL,	3685	3017	722	362	3565	3071	626	287	28	561	1181	1506	1532	8843	145	1009	461	—
TOTAL P. E. Island,	15,305	12,318	2786	1437	14,427	12,417	2467	1087	44	6530	4071	9895	6436	27,147	3659	2907	4275	—

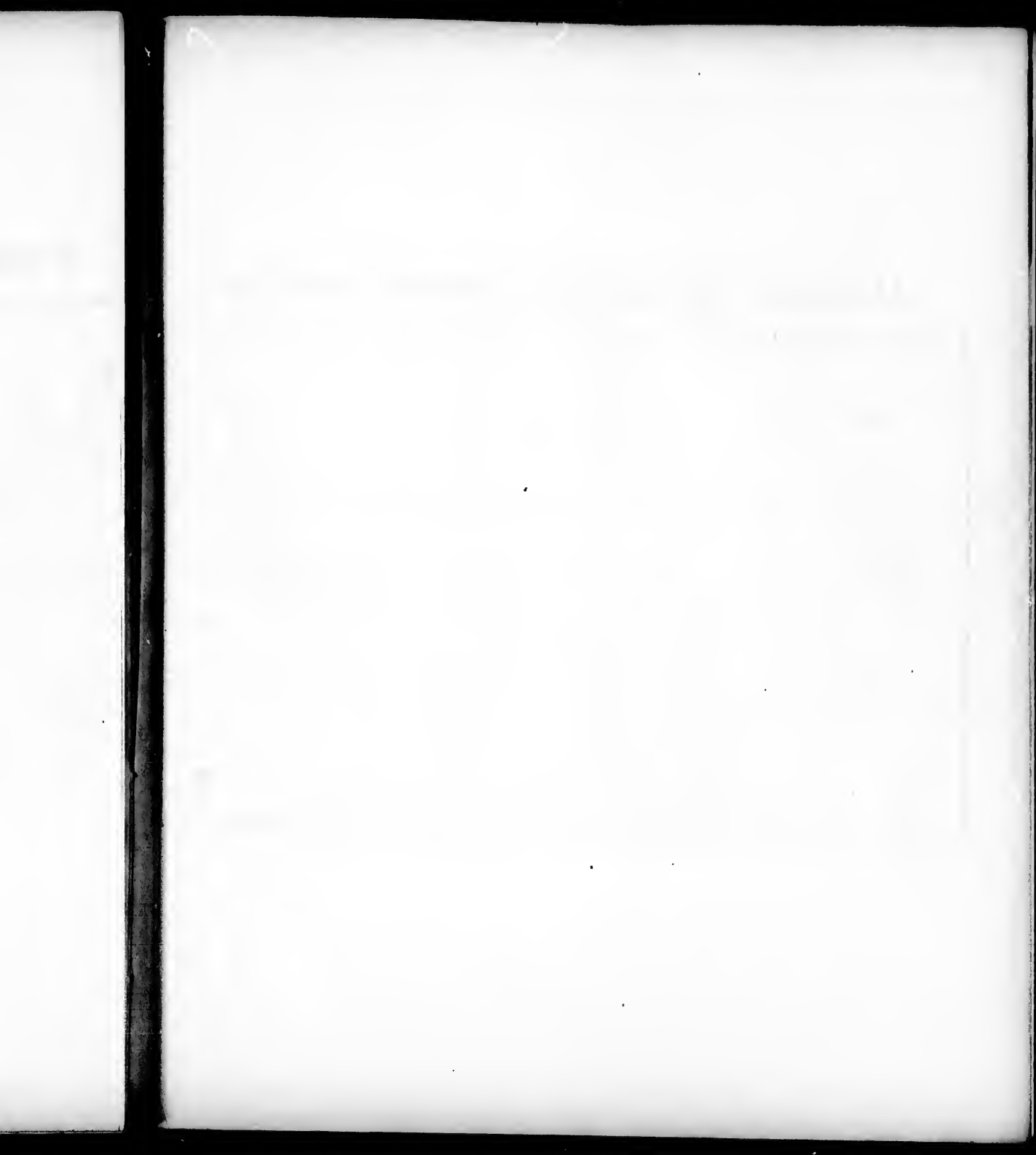
Population of P. E. Island.—1848.

Roman Catholics.	Methodists.	Baptists.	Bible Christians.	Quakers.	Jews.	Universalists.	Mormons.	Unitarians.	Other denominations.	Religious profession not stated.	NATIVES OF										INDIANS.		Total number of Males.	Total number of Females.	Total number of Inhabitants.	Total number of Inhabitants in 1841.	Increase.
											England.	Scotland.	Ireland.	British Colonies.	P. E. Island.	Other Countries.	Country not stated.	Deaf and Dumb.	Blind.	Inane.	Males.	Females.					
3410	120	9	182	—	—	—	—	1	2	55	229	184	379	202	4567	48	14	4	2	13	62	63	2990	2746	5748	4061	1687
1904	50	17	54	—	—	—	—	—	7	7	175	153	129	143	3147	6	11	7	1	7	7	9	1942	1803	3745	3091	654
1753	1058	31	49	—	—	11	58	—	60	22	221	310	668	179	3767	33	11	1	1	8	7	9	2722	2479	5202	4049	1153
29	9	—	—	—	—	—	—	—	—	—	4	21	19	6	397	—	—	—	—	—	—	—	238	209	447	387	60
7096	1215	54	285	—	1	11	58	1	59	77	632	651	1155	530	11,878	87	23	12	4	28	76	68	7892	7237	15,142	11,588	3554
3071	454	38	317	—	—	—	—	1	13	—	660	1435	675	191	6699	17	—	7	2	22	27	42	4959	4787	9746	7326	2420
4608	643	66	21	1	—	1	—	—	51	16	536	1076	1990	124	6641	17	15	11	6	10	28	27	5393	5058	10451	7221	3233
1859	319	21	176	—	—	—	—	—	6	—	94	1329	457	166	5111	36	1	1	5	17	—	—	3688	3506	7194	5805	1389
1590	853	8	15	—	—	—	3	4	7	—	684	240	950	369	2467	16	—	1	—	3	—	—	2319	2398	4717	3896	821
11,208	2269	131	529	1	—	1	3	5	77	16	1974	4080	4072	811	20,918	86	16	20	13	52	55	69	16,359	15,749	32,111	24,248	7863
3498	9	32	—	—	—	—	—	—	12	1	35	279	244	176	3583	10	3	1	2	7	4	6	2201	2125	4340	3507	833
3086	14	108	—	—	—	—	—	—	10	—	79	366	322	217	3710	16	8	4	4	6	19	26	2431	2318	4763	3571	1192
1898	118	56	458	—	—	—	—	—	102	—	227	1277	511	256	3357	9	—	4	2	5	5	2	2825	2819	5644	3564	2080
361	1	19	3	—	—	—	—	—	—	—	50	83	63	66	413	3	—	—	—	1	—	—	357	321	678	556	122
8843	145	108	461	—	—	—	—	—	114	11	391	2005	1140	715	11,063	38	11	9	8	19	28	34	7814	7583	15,425	11,198	4227
27,147	3659	290	4275	1	1	12	61	6	250	104	2997	6736	6407	2086	43,858	211	52	41	25	99	159	171	32,065	30,569	62,678	47,034	15,644

THE HISTORY OF THE UNITED STATES OF AMERICA

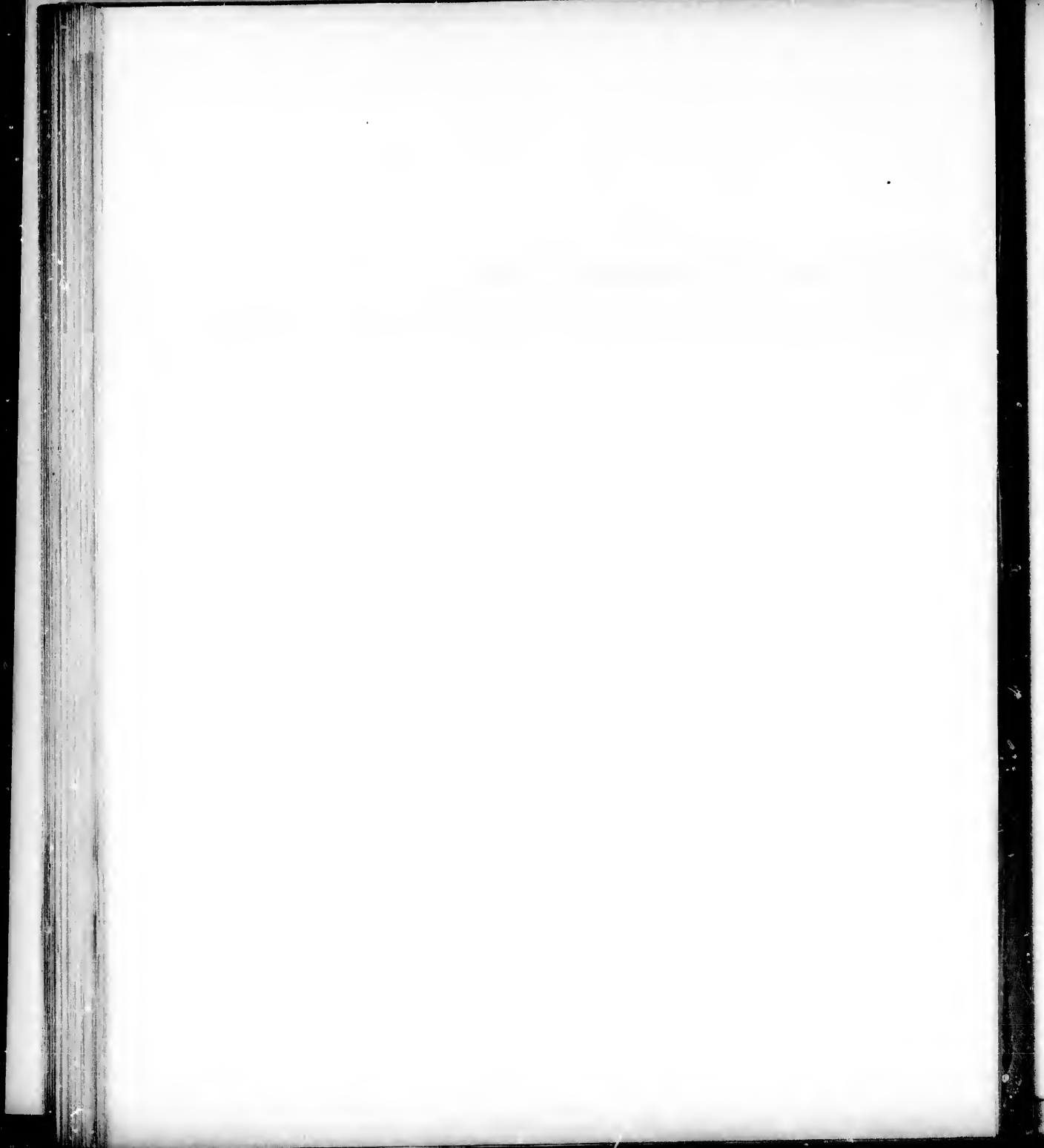
By CHARLES A. BEAN

NEW YORK: THE CENTURY CO., 1900.



Abstract of the Statistical Returns

ELECTORAL DISTRICTS, &c.		NUMBER OF ACRES HELD					Number of Acres of arable land.	CROPS RAISED IN 1847.						
		In fee simple.	Under Lease.	By written demise.	By verbal agreement.	By Occupants not freeholders or tenants.		Wheat.	Barley.	Oats.	Potatoes.	Turnips.	Clover Seed.	Hay.
								Bushels.	Bushels.	Bushels.	Bushels.	Bushels.	lbs.	Tons.
PRINCE COUNTY.	First District,	22,653	33,167	4543	2564	11,798	20,331	22,765	3196	36,341	107,889	9550	415	3605
	Second District,	33,657	15,553	6	3210	2600	19,712	11,501	3965	46,363	42,133	15,211	401	4414
	Third District,	39,356	34,186	1363	3244	2788	26,446	19,837	5309	73,877	66,474	20,716	4011	6451
	Prince T. & Roy.	4632	1245		100	136	3066	2616	816	11,595	7180	2772	30	605
	Total.	100,303	84,151	5912	9118	17,322	69,604	59,749	13,586	173,176	223,676	48,279	4857	15,075
QUEEN'S COUNTY.	First District,	34,432	75,186	6745	4608	2020	41,703	49,657	15,525	147,052	115,525	50,249	6847	7777
	Second District,	31,935	73,406	7558	9720	7711	37,488	34,432	12,524	129,056	146,355	22,722	1339	7536
	Third District,	34,910	35,774	672	2319	4830	24,322	25,996	5749	100,145	20,816	4564	468	5333
	Char. T. & Roy.,	6695	1334	250	160	—	2530	4781	939	9006	5785	10,021	—	1320
	Total.	111,022	199,700	15,225	16,807	14,561	106,103	111,856	31,737	385,259	348,481	37,000	8654	21,966
KING'S COUNTY.	First District,	21,998	7515	5338	1791	15,922	12,480	11,652	10,415	66,976	31,816	5398	68	2611
	Second District,	25,598	13,824	2326	8746	4517	13,556	15,111	1089	61,262	47,706	6951	370	2836
	Third District,	20,407	34,553	1879	2309	12,061	12,873	17,184	7419	56,375	76,199	5656	936	2438
	George T. & Roy.	1321	133	32	13	151	769	1235	275	3335	3697	193	15	142
	Total.	69,324	56,075	10,175	12,838	33,551	39,678	45,182	27,193	187,948	159,418	18,058	1389	8064
TOTAL, P. E. ISLAND.		260,649	330,926	31,312	38,783	65,434	215,389	219,787	75,521	746,383	751,575	153,933	14,900	35,128
Totals, as per Census of 1847.		251,762	228,595	32,224	40,668	60,511	141,580	153,459	83,299	611,844	2,230,114
.....		28,337	16,331	4923	73,809	66,326	131,539
.....		912	1835	7773	1,498,539



es of Lands, Rents, &c. P. E. Island.—1848.

ACRE. CY.	RENT PER ACRE.			NUMBER OF TOWNSHIP.	NUMBER OF PERSONS HOLDING					NUMBER OF TERMS OF LEASE OR AGREEMENT.					RENT PER ACRE, STIRLING.			RENT PER ACRE, CURRENCY.			RENT PER ACRE.	
	2s. and above 1s.	Over 2s. and not over			In fee simple.	Under Lease.	Under demise.	By agreements.	Without agreements.	999 years.	From 100 years to 999.	30 years & under 100.	30 years & under 50.	Under 30 years.	6d. and under	1s. and above 6d.	2s. and above 1s.	6d. and under	1s. and above 6d.	2s. and above 1s.	Over 2s. and not over 3s.	Over 3s.
		3s.	over 3s.																			
				Continued	1200	2611	291	349	657	2006	357	215	50	70	183	2030	184	79	291	257	23	52
				Township 39	32	4	11	31	•	2	•	•	34	1	1	2	13	•	6	17	•	•
				Township 40	20	18	8	52	6	12	•	•	50	•	2	9	•	9	16	30	•	1
				Township 41	10	48	•	76	1	5	•	•	107	2	1	5	1	8	26	80	•	1
				Township 42	4	13	•	17	43	7	•	•	2	•	•	•	•	•	10	22	•	•
				Township 43	43	56	•	7	11	37	1	1	11	1	3	•	•	•	47	4	•	•
				Township 44	76	39	•	2	17	37	•	•	•	3	17	8	2	•	•	•	1	2
				Township 45	36	9	•	•	86	9	•	•	•	•	•	9	•	•	•	•	•	•
				Township 46	31	26	5	•	44	26	•	•	•	•	7	14	•	•	7	•	•	•
				Township 47	51	4	46	14	33	•	•	•	•	•	•	17	•	•	•	•	•	•
				Township 48	28	157	•	6	•	139	6	3	3	6	•	124	14	•	5	4	1	10
				Township 49	85	97	5	5	19	95	•	•	1	5	4	38	2	1	7	38	4	9
				Township 50	91	81	9	11	9	44	•	•	35	4	•	56	24	•	1	13	•	6
				Township 51	37	89	4	3	2	88	2	•	•	•	2	88	•	•	•	•	•	•
				Township 52	41	13	•	3	50	13	•	•	•	•	6	5	•	•	2	1	•	1
				Township 53	19	31	•	9	20	37	•	•	•	3	8	25	7	•	•	•	•	•
				Township 54	14	16	2	2	20	•	•	•	•	16	3	13	2	•	•	•	•	•
				Township 55	104	2	8	2	2	•	•	•	•	•	•	2	•	•	•	•	•	•
				Township 56	7	86	•	12	•	10	11	64	•	1	18	77	•	•	•	•	•	2
				Township 57	92	153	2	11	5	111	21	8	•	13	17	132	•	•	7	•	•	•
				Township 58	64	80	•	6	•	22	3	12	•	46	6	44	•	6	27	•	•	1
				Township 59	21	112	2	5	6	86	2	4	1	23	8	72	10	1	•	22	•	1
				Township 60	39	26	•	2	18	21	2	•	1	•	1	24	1	•	•	•	•	•
				Township 61	7	75	1	•	•	39	33	1	•	•	•	33	•	2	39	•	•	•
				Township 62	19	57	1	2	22	39	3	8	3	4	•	46	6	•	1	5	•	•
				Township 63	20	42	•	•	•	41	•	•	•	•	4	14	19	•	•	•	•	5
				Township 64	43	84	15	17	8	97	•	•	•	1	6	44	47	•	•	•	•	1
				Township 65	41	139	13	21	6	128	•	•	•	•	•	94	73	•	•	•	•	•
				Township 66	—	2	•	•	49	1	•	•	•	•	•	•	•	•	•	•	•	•
				Township 67	76	52	2	3	3	50	1	•	•	•	11	41	•	•	•	•	•	•
				TOTAL TOWNSHIPS,	2351	4222	425	671	851	3202	440	319	302	199	314	3068	405	106	494	493	37	85
				Char. Town & Roy.,	128	38	3	1	•	4	3	3	•	12	•	•	•	•	•	3	•	26
				Georgetown & Roy.,	54	5	2	2	10	3	•	•	•	2	•	2	•	•	•	4	•	4
				Princetown & Roy.,	51	18	•	1	8	17	1	•	•	•	1	17	•	•	•	•	•	•
				Panmure Island,	1	•	1	•	•	•	•	•	•	•	•	•	•	•	•	•	•	•
				Boughton Island,	•	7	•	•	•	7	•	•	•	•	•	7	•	•	•	•	•	•
				Governor's Island,	•	3	•	•	•	•	•	•	•	3	•	•	•	•	•	3	•	•
				TOTAL P. E. ISLAND,	2585	4293	431	675	869	3233	444	322	308	216	315	3092	405	106	494	503	37	115
				Returns, 1841.	2039	2647	346	580	734	1733	153	216	129	55	46	2056	341	45	596	57	40	10
				Increase,	546	1646	91	95	135	1500	291	106	179	161	269	1042	64	61	•	446	•	150

