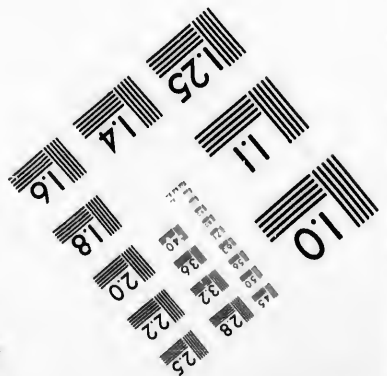
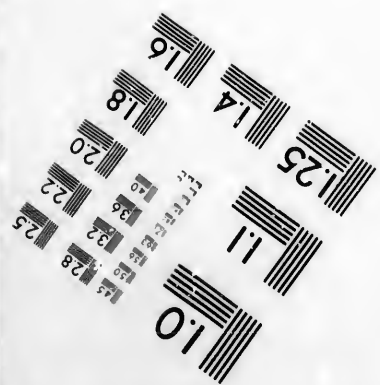
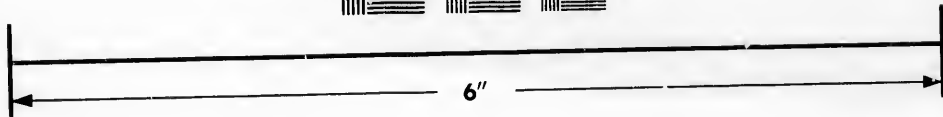
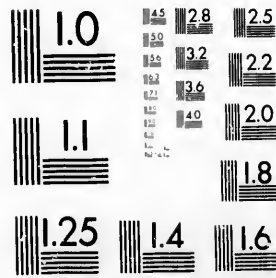


**IMAGE EVALUATION  
TEST TARGET (MT-3)**



**Photographic  
Sciences  
Corporation**

23 WEST MAIN STREET  
WEBSTER, N.Y. 14580  
(716) 872-4503

**CIHM/ICMH  
Microfiche  
Series.**

**CIHM/ICMH  
Collection de  
microfiches.**



**Canadian Institute for Historical Microreproductions**

**Institut canadien de microreproductions historiques**

**1980**

Technical and Bibliographic Notes/Notes techniques et bibliographiques

The Institute has attempted to obtain the best original copy available for filming. Features of this copy which may be bibliographically unique, which may alter any of the images in the reproduction, or which may significantly change the usual method of filming, are checked below.

L'Institut a microfilmé le meilleur exemplaire qu'il lui a été possible d'obtenir. Les détails de cet exemplaire qui sont peut-être uniques du point de vue bibliographique, qui peuvent modifier une image reproduite, ou qui peuvent exiger une modification dans la méthode normale de filmage sont indiqués ci-dessous.

- Coloured covers/  
Couverture de couleur
- Covers damaged/  
Couverture endommagée
- Covers restored and/or laminated/  
Couverture restaurée et/ou pelliculée
- Cover title missing/  
Le titre de couverture manque
- Coloured maps/  
Cartes géographiques en couleur
- Coloured ink (i.e. other than blue or black)/  
Encre de couleur (i.e. autre que bleue ou noire)
- Coloured plates and/or illustrations/  
Planches et/ou illustrations en couleur
- Bound with other material/  
Relié avec d'autres documents
- Tight binding may cause shadows or distortion  
along interior margin/  
La reliure serrée peut causer de l'ombre ou de la  
distortion le long de la marge intérieure
- Blank leaves added during restoration may  
appear within the text. Whenever possible, these  
have been omitted from filming/  
Il se peut que certaines pages blanches ajoutées  
lors d'une restauration apparaissent dans le texte,  
mais, lorsque cela était possible, ces pages n'ont  
pas été filmées.
- Additional comments:/  
Commentaires supplémentaires:

- Coloured pages/  
Pages de couleur
- Pages damaged/  
Pages endommagées
- Pages restored and/or laminated/  
Pages restaurés et/ou pelliculés
- Pages discoloured, stained or foxed/  
Pages décolorées, tachetées ou piquées
- Pages detached/  
Pages détachées
- Showthrough/  
Transparence
- Quality of print varies/  
Qualité inégale de l'impression
- Includes supplementary material/  
Comprend du matériel supplémentaire
- Only edition available/  
Seule édition disponible
- Pages wholly or partially obscured by errata  
slips, tissues, etc., have been refilmed to  
ensure the best possible image/  
Les pages totalement ou partiellement  
obscurcies par un feuillet d'errata, une pelure,  
etc., ont été filmées à nouveau de façon à  
obtenir la meilleure image possible.

This item is filmed at the reduction ratio checked below/  
Ce document est filmé au taux de réduction indiqué ci-dessous.

10X	12X	14X	16X	18X	20X	22X	24X	26X	28X	30X	32X
						✓					

The copy filmed here has been reproduced thanks to the generosity of:

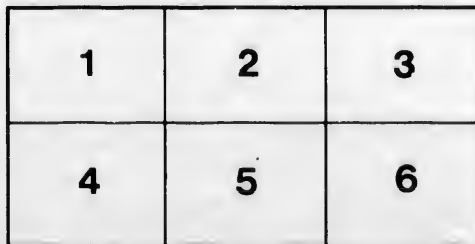
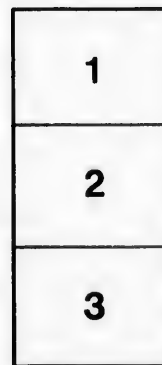
Library  
Agriculture Canada

The images appearing here are the best quality possible considering the condition and legibility of the original copy and in keeping with the filming contract specifications.

Original copies in printed paper covers are filmed beginning with the front cover and ending on the last page with a printed or illustrated impression, or the back cover when appropriate. All other original copies are filmed beginning on the first page with a printed or illustrated impression, and ending on the last page with a printed or illustrated impression.

The last recorded frame on each microfiche shall contain the symbol  $\rightarrow$  (meaning "CONTINUED"), or the symbol  $\nabla$  (meaning "END"), whichever applies.

Maps, plates, charts, etc., may be filmed at different reduction ratios. Those too large to be entirely included in one exposure are filmed beginning in the upper left hand corner, left to right and top to bottom, as many frames as required. The following diagrams illustrate the method:



L'exemplaire filmé fut reproduit grâce à la générosité de:

Bibliothèque  
Agriculture Canada

Les images suivantes ont été reproduites avec le plus grand soin, compte tenu de la condition et de la netteté de l'exemplaire filmé, et en conformité avec les conditions du contrat de filmage.

Les exemplaires originaux dont la couverture en papier est imprimée sont filmés en commençant par le premier plat et en terminant soit par la dernière page qui comporte une empreinte d'impression ou d'illustration, soit par le second plat, selon le cas. Tous les autres exemplaires originaux sont filmés en commençant par la première page qui comporte une empreinte d'impression ou d'illustration et en terminant par la dernière page qui comporte une telle empreinte.

Un des symboles suivants apparaîtra sur la dernière image de chaque microfiche, selon le cas: le symbole  $\rightarrow$  signifie "A SUIVRE", le symbole  $\nabla$  signifie "FIN".

Les cartes, planches, tableaux, etc., peuvent être filmés à des taux de réduction différents. Lorsque le document est trop grand pour être reproduit en un seul cliché, il est filmé à partir de l'angle supérieur gauche, de gauche à droite, et de haut en bas, en prenant le nombre d'images nécessaire. Les diagrammes suivants illustrent la méthode.

PLA

Prof. Macoun, G. L. S.  
With compliments of Auth.  
83276  
6

# A PRELIMINARY LIST

OF THE

# PLANTS OF NEW BRUNSWICK.

COMPILED BY

REV. JAMES FOWLER, M.A.

*With assistance of Members of New Brunswick Natural History Society.*



SAINT JOHN, N. B.  
ELLIS, ROBERTSON & Co. — "GLOBE" PRESS.  
1885.

3

NOTE: The following is a list of the names of the persons who have been appointed to the various positions in the office of the Secretary of the Board of Education, for the year 1864.

SECRETARY OF THE BOARD OF EDUCATION

PR

**T**

The m  
Hook  
of son  
year t  
Trees  
the au  
of Bo  
power  
read a  
of Nev  
subseq  
same y  
the mo  
quit to  
route.  
talent  
1864)  
Brunsv  
tin Nat

<sup>1</sup>He  
three of  
a tree t  
dant, at  
Wood-

## PRELIMINARY LIST OF THE PLANTS OF NEW BRUNSWICK.

COMPILED BY REV. JAMES FOWLER, M.A.

*With assistance of Members of N. B. Natural History Society.*

### HISTORICAL NOTE.

THE writer has been unable to obtain any published information on the Flora of New Brunswick of earlier date than 1862. The name of the Province occurs a few times in the works of Pursh, Hooker, Gray and others, but only in connexion with the distribution of some particular species of plant. During the above-mentioned year there appeared "A Description of the Forest and Ornamental Trees of New Brunswick, by D. R. Munro, St. John, N. B." As the author proves himself innocent to the last degree of all knowledge of Botany, his descriptions are simply amusing exhibitions of the power of imagination.<sup>1</sup> On February 12th, 1864, Prof. L. W. Bailey read an interesting paper entitled "Notes on the Geology and Botany of New Brunswick" before the Natural History Society, which was subsequently published in the *Canadian Naturalist* for April of the same year. The author describes the character of the country from the mouth of the Tobique to its source, and thence down the Nepisiquit to Bathurst, giving partial lists of the plants met with on the route. The reading of this paper gave an impulse to the Botanic talent of the Society, and at the following April meeting (April 8, 1864) Mr. Robert Matthew read a "List of the Plants of New Brunswick," but, unfortunately, it was never published. (See Bulletin Nat. Hist. Soc., I, p. 18.)

<sup>1</sup>He describes three species of Oak, two of Elm, three of Beech, and three of Ash as being abundant. His Bilberry (*Vaccinium*) grows into a tree thirty feet and upwards, and Dogwood (*Cornus Florida*) is abundant, attaining a height of thirty feet. He finds two species of Moose Wood—the Round-leaf and the Notch-leaf Moose Wood.



The next notice appeared in 1869, when Mr. G. F. Matthew published a valuable and thoughtful paper "On the Occurrence of Arctic and Western Plants in Continental Acadia." The paper was read before the Society, April 13, 1869, and published in the June number of *Canadian Naturalist*.

In 1876, Dr. L. W. Bailey and Edward Jack, Esq., prepared and published a "Descriptive Catalogue of the Woods and Minerals of New Brunswick," for use at the Centennial Exhibition at Philadelphia. It embodies a large amount of valuable information from an economic standpoint, and gives the most reliable account of the uses of our forest trees that has yet been presented to the public.

No further references to the subject occur till January, 1879, when the Provincial Agricultural Report for the previous year appeared with a "List of New Brunswick Plants" by the present writer. The List was subsequently published in the *Educational Circular*. It gives the names of 1,074 species, 743 of which are Phanerogams and the remainder Cryptogams. All of these the writer had himself collected or seen in the possession of others. The publication awakened the interest of the students of Botany, and specimens of rare or new plants were forwarded to him from different parts of the Province. His own residence in Fredericton in 1878-9 gave him an opportunity of securing some new material, and in the Report of the following year (1880) he published "Additions to the List of New Brunswick Plants," accompanied by an article on the "Advantages resulting from a Knowledge of the Flora of our Province."

In 1882 the New Brunswick Natural History Society published the first number of its Annual Bulletin, containing the Report of the Botanical Committee of the Society, and a List of the species discovered since the publication of the previous paper. The two succeeding Bulletins contain additional Lists bringing up the number of species discovered to the close of 1883. In Bulletin No. 2 appeared an interesting paper on the "Botany of the Upper St. John" by Mr. G. U. Hay, who has devoted considerable attention to an investigation of the plants of the St. John and its tributaries. Since his removal to Ontario (1880) the writer has received specimens of many new species from botanic friends, and by their kind aid has compiled the present Catalogue as a contribution to the advancement of Botanic Science in his native Province. His aim has been in the compilation to exclude every species of which he had not seen a

specim  
rule an  
as Ast  
is exce  
large c  
charac

It i  
to the  
visited  
ber alr  
render  
indulge

The  
excepti  
specifi  
as far a

The  
ance he  
as G. H  
Wetmo  
work w

QUEEN'S

specimen. The few instances in which he has deviated from this rule are mentioned in their appropriate places. A few genera, such as Aster and Solidago, are in a very unsatisfactory condition, and it is exceedingly desirable that Botanists make special efforts to secure large collections of perfect specimens for future study, that the true character of our species may be ascertained.

It is unnecessary to say that the present List is imperfect owing to the fact that only a limited area of the Province has yet been visited by Botanists. Every year will add new species to the number already known, but the author trusts that the assistance he has rendered to the students of our Flora will secure for him the kind indulgence of the reader.

The order and names of Families and Genera are, with very few exceptions, those of Bentham & Hooker's *Genera Plantarum*. The specific names are from Watson's Index and Gray's Synoptical Flora as far as they go. The remainder are taken from the Manual.

The writer acknowledges, with warmest gratitude, the kind assistance he has received from such students of New Brunswick's Flora as G. F. Matthew, George U. Hay, J. Brittain, R. Chalmers, J. E. Wetmore, J. Vroom, J. Moser, and others, without whose aid this work would have been impossible.

JAMES FOWLER.

QUEEN'S COLLEGE, KINGSTON, ONT.

*February 4, 1885.*

*List of  
spre  
in g*

Aconitum  
Papaver  
Papaver  
*Fow*

Glaucium  
Adlumia  
intro

Erysimum  
heap

Diploxys  
*Hay*

Diploxys  
*Hay*

Brassica  
Tilia Eur

Ampelops  
but h

Trifolium  
Trifolium

Lotus cor  
*Hay,*

Ornithopus  
the p

Ribes aure

Bupleurum

Carum Ca  
places

Helianthus  
Anthemis

APPENDIX.

---

*List of Plants, mostly of European origin, found on ballast or spreading from ballast deposits, together with a few spontaneous in gardens or escaping from them.*

- Aconitum Napellus, L. Spontaneous in gardens, *Fowler, Vroom.*  
Papaver dubium, L. Ballast, Buctouche, *Fowler.*  
Papaver Rheas, L. Spontaneous in garden at Manse, Bass River, *Fowler.*  
Glaucium luteum, Scop. Ballast St. John, *Hay.*  
Adlumia cirrhosa, Raf. Spontaneous in gardens wherever it is introduced.  
Erysimum orientale, R. Brown. Apparently permanent on ballast heaps, Richibucto, *Fowler.*  
Diplotaxis tenuifolia, DC. Ballast, Richibucto, *Fowler*; St. John, *Hay.*  
Diplotaxis muralis, DC. Ballast, Richibucto, *Fowler*; St. John, *Hay.*  
Brassica campestris, L. Ballast, St. John, *Hay.*  
Tilia Europea, L. Planted for ornament.  
Ampelopsis quinquefolia, Michx. Extensively planted for ornament, but has not yet been found wild.  
Trifolium resupinatum, L. Ballast, St. John, *Fowler.*  
Trifolium ornithopodioides, L. Ballast, St. John, *Fowler.*  
Lotus corniculatus, L. Fairville, 1877, *Fowler*; ballast, St. John, *Hay*, 1881, Herb.  
Ornithopus scorpioides, L. Occurring in a garden at St. Stephen the past two seasons, *Vroom, Herb., Bulletin III. 33.*  
Ribes aureum, Pursh. Cultivated for ornament.  
Bupleurum rotundifolium, L. Ballast, St. John, *Hay.*  
Carum Carui, L. Becoming a very troublesome weed in several places in St. John Co.  
Helianthus tuberosus, L. Spontaneous about garden fences.  
Anthemis tinctoria, L. Ballast, St. John, *Hay.*

- Chrysanthemum Parthenium, Pers. In gardens, scarcely wild.  
 Chrysanthemum Coronarium, L. Ballast, St. John, *Hay*, Herb.  
 Chrysanthemum segetum, L. Ballast, St. John, *Hay*, Herb.  
 Senecio Jacobæus, L. Firmly established at Newcastle, Miramichi.  
 Senecio viscosus, L. Spreading rapidly at Bathurst and Shediac.  
 Carduus crispus, L. West side Courtenay Bay, *Hay*.  
 Onopordon Acanthium, Vaill. Ballast at Buctouche.  
 Silybum Marianum, Vaill. In gardens.  
 Lampana communis, L. Ballast, St. John, *Hay*.  
 Crepis virens, L. Ballast, St. John.  
 Tragopogon pratensis, L. In a field, St. Stephen, *Vroom*.  
 Borago officinalis, L. Escaped from gardens in a few places.  
 Physalis pubescens, L. Found occasionally in gardens.  
 Linaria Cymbalaria, Mill. Ballast Wharf, St. John, *Hay*, 1881.  
 Linaria minor, Desf. Ballast Wharf, St. John, *Hay*, 1881.  
 Mimulus moschatus, Dougl. Alma, *Brittain*. Probably outcast  
 from a garden.  
 Satureia hortensis, L. Found growing on a railroad embankment  
 near Hillsborough, *Brittain*.  
 Galeopsis Ladanum, L. Ballast, St. John, *Hay*.  
 Mercurialis annua, L. Spread from ballast at Buctouche.  
 Daphne Mezereum. Near Fredericton, *W. T. L. Reed*.  
 Salix acutifolia, L. Planted for ornament, Kent Co.  
 Populus dilatata, Ait. Often planted under the name of Lombardy  
 Poplar.  
 Populus alba, L. White Poplar or Abele. Often planted. Spreads  
 by the roots.

PLA

1. C
- 1 C. ven
- 2 C. Vir
2. T
- 3 T. dioi
- 4 T. Cor
3. A
- 5 A. mul

<sup>1</sup>Herbari

hi.

A PRELIMINARY CATALOGUE  
OF THE  
PLANTS OF NEW BRUNSWICK.

PHANEROGAMIA.

CLASS I. — EXOGENOUS PLANTS.

· SUB-CLASS I. — ANGIOSPERMÆ.

DIVISION A. — POLYPETALÆ.

I. RANUNCULACEÆ.

1. CLEMATIS, L. - - VIRGIN'S BOWER CLEMATIS.
- 1 C. verticillaris, DC. St. Stephen, *Vroom*; abundant on Nashwaaksis, *Moser*; Herb.<sup>1</sup>
- 2 C. Virginiana, L. Common throughout the province.
2. THALICTRUM, Tourn. - - - MEADOW-RUE.
- 3 T. dioicum, L. Fredericton, *Fowler*; Keswick Ridge, *Dr. Bailey*, Nashwaaksis, Douglas, *Vroom*, Herb.; Grand Lake, Woodstock, Eel River, St. Francis, Tobique, *Hay*; Bailey, Can. Nat., 1864, p. 83; Flat Lands, Restigouche, *Chalmers*.
- 4 T. Cornuti, L. Very common along wet banks of brooks. Herb.
3. ANEMONE, L. - - ANEMONE. WIND-FLOWER.
- 5 A. multifida, DC. St. John River above Fredericton, Grand Falls, *Moser*; from mouth of St. Francis to Tobique, *Hay*. Bulletin II. 27.

<sup>1</sup>*Herbarium of New Brunswick Natural History Society.*

- 6 A. *cylindrica*, Gray. St. Francis River, *Hay*. 6.  
 7 A. *Virginiana*, L. Mouth of Upsalquitch, *Fowler*; Grand Falls, 22 C.  
 St. John River, *Moser*; Lower Kennebecasis, Mada-  
 waska, St. Francis, *Hay*, Bulletin II. 25, 27; Andover and  
 along St. John, *Wetmore*.  
 8 A. *dichotoma*, L., (*A. Pennsylvanica*, L.) Rather common 7.  
 throughout the province. 23 A.  
 9 A. *nemorosa*, L. Rare in northern counties. Near mouth of N. 8.  
 W. Miramichi, *Fowler*; South Bay, *Mrs. Heustis*; Rothe-  
 say and Bloomfield, *Hay*, Herb.  
 10 A. *Hepatica*, L., (*Hepatica triloba*, Chaix.) Keswick Ridge, 24 A.  
 Herb. N. B. Univers., *Fowler*; in Herb., *Moser*; St.  
 Stephen, *Vroom*; *Petitecodiac*, *William Price*. 25 A.

4. RANUNCULUS, L. - BUTTERCUP. CROWFOOT.

- 11 R. *aquatilis*, L., var. *trichophyllus*, Gray. In sluggish brooks. 9.  
 Black River, Northumberland Co.; Bass River, Kent Co., 26 B. v  
*Fowler*, in Herb.; Tobique River, *Hay*.  
 12 R. *multifidus*, Pursh., (*R. Purshii*, Torrey.) In ditches at Point 10.  
 de Buté and Belledune. 27 C. t  
 13 R. *Flammula*, L., var. *reptans*, Gray. Woodstock, *Fowler*; 11.  
 Fredericton, Herb.; common at Salmon River and 28 B. p  
 Andover, *Wetmore*; along St. John River, *Hay*.  
 14 R. *Cymbalaria*, Pursh. Near brackish or salt water along the 12.  
 rivers Kouchibouguac, Richibuc<sup>o</sup>, St. John, *Fowler*; Herb. 29 N. a  
 15 R. *abortivus*, L. Bass River, Kouchibouguac, *Fowler*; Lan-  
 caster, *Mrs. Heustis*; Hampton, *Hay*, Herb.  
 16 R. *sceleratus*, L. Shediac, River Charlo, *Fowler*; St. Stephen, 30 N. p  
*Vroom*.  
 17 R. *recurvatus*, Poir. Along a small shaded brook near Manse,  
 Bass River, Fredericton, *Fowler*; Kennebecasis and St.  
 John, *Hay*, in Herb.; *Vroom*; Clifton and Andover, *Wetmore*.  
 18 R. *Pennsylvanicus*, L. Rather rare. Kouchibouguac, *Fowler*;  
 Grand Lake and Keswick Ridge, *Hay*, Herb.  
 19 R. *repens*, L. We have two forms, one introduced and com-  
 mon about St. John, the other taller and smoother, native.  
 The introduced form may be recognized by its hairy creep-  
 ing runners and blotched leaves.

5. CALTHA, L. - - - MARSH MARIGOLD.

- 21 C. *palustris*, L. Common. Bass River, Coal Branch, Kent 30 N. p  
 Co., *Fowler*; Indian Falls on Nepisiquit, *Dr. Bailey*, Can.  
 Nat. 1864, p. 92; Madawaska County, *Hay*.

6. COPTIS, Salisb. - - - - - GOLDTHREAD.
- 22 C. trifolia, Salisb. Common. Bass River, Miramichi, *Fowler*;  
Carleton, Herb. *Mrs. Heustis*; *Hay*, Herb.
7. AQUILEGIA, Tourn. - - - - - COLUMBINE.
- 23 A. vulgaris, L. Escaped from gardens near St. John, *Fowler*;  
Milkish and Aroostook Falls, *Hay*, Herb. Bulletin II. 29.
8. ACTÆA, L. - - - - - BANEERRY.
- 24 A. spicata, L., var. rubra, Michx. Bass River, *Fowler*; Camp-  
bellton, *Hay*, Herb.
- 25 A. alba, Bigel. Rather rare. Fredericton, *Fowler*; Camp-  
bellton, *Hay*, in Herb.; in rich woods along St. John, *Hay*.

## II. BERBERIDACEÆ.

9. BERBERIS, L. - - - - - BARBERRY.
- 26 B. vulgaris, L. Occasionally found near garden fences.
10. CAULOPHYLLUM, Michx. - PAPPOOSE-ROOT.
- 27 C. thalictroides, Michx. Nashwaaksis, *Moser*; rich intervals  
of Upper St. John, St. Francis, Eel River, Andover, *Hay*,  
Herb., Bulletin II. 25, 30; Aroostook Junction on rich  
flats, *Wetmore*.

## III. NYMPHÆACEÆ.

11. BRASENIA, Schreber. - - - WATER-SHIELD.
- 28 B. peltata, Pursh. Near residence of W. S. Butler, Esq., Grand  
Lake. Near railway station, Fredericton, *Fowler*; Cox's  
Point, Grand Lake, *Hay*, Herb.; St. Stephen, *Vroom*;  
Clifton Lakes and Salmon River, *Wetmore*.
12. NUPHAR, Smith. - - - YELLOW POND-LILY.
- 29 N. advena, Ait. Abundant in King's Co., Salmon River, Q. C.,  
St. John Co., *Hay*, Herb.; Springfield and St. Croix  
River, *Fowler*; Nepisiquit Lakes, *Dr. Bailey*, Can. Nat.  
1864, p. 90; abundant in lakes near Campbellton, *Chalmers*.
- 30 N. pumilum, Smith. Woodstock, *Fowler*; abundant at Salmon  
River, *Wetmore*; Petiteodiac and Nauwigewauk, *Brittain*;  
Nepisiquit Lakes, *Dr. Bailey*, Can. Nat. 1864, p. 90; Kes-  
wick, Nepisiquit Lakes, *Hay*, Herb. Bulletin II. 31.



13. NYMPHÆA, Tourn. - - - WATER-LILY.

- 31 N. odorata, Ait. Lakes in St. John Co., Grand Lake, *Fowler, Hay*; Gondola Point and other places in King's Co., *Hay, Herb.*; St. Croix River, *Vroom.*

IV. SARRACENIACEÆ.

14. SARRACENIA, Tourn. - SIDE-SADDLE FLOWER.

- 32 S. purpurea, L. Common in bogs. Point Escuminac, *Fredericton, Fowler*; St. John, *Hay, Herb.*

V. PAPAVERACEÆ.

15. PAPAVER, L. - - - - - POPPY.

- 33 P. somniferum, L. Spontaneous in gardens. Scarcely wild.

16. SANGUINARIA, Dill. - - - BLOODROOT.

- 34 S. Canadensis, L. Petitecodiac, *Brittain*; Nashwaaksis, *Vroom* in Herb.; Keswick Ridge, *Moser*; Metapedia, *Chalmers*; common at Aroostook Junction, *Wetmore*; abundant on St. Francis, low lands on Tobique, along Upper St. John, Eel River, *Hay. Bulletin II. 25, 30.*

17. CHELIDONIUM, L. - - - CELANDINE.

- 35 C. majus, L. A garden weed in Fredericton, *Fowler*; Richmond, Carleton Co., *Vroom, Herb.*; apparently naturalized at Lower Woodstock, *Hay.*

VI. FUMARIACEÆ.

18. DICENTRA, Bork. - DUTCHMAN'S BREECHES.

- 36 D. Cucullaria, DC. Bass River, Salmon River, Kent County, *Fowler*; Dutch Valley, *Wetmore*; in Herb. *Mrs. Heustis*; Hampton and Norton, *Hay, Herb.*; common in rich woods at Andover, Salmon River, Waterford, *Wetmore.*

19. CORYDALIS, Vent. - - - CORYDALIS.

- 37 C. glauca, Pursh. Road from Weldford Station to Salmon River, Fredericton, *Fowler*; Douglas Mountain and Milkish, *Hay, Herb.*; Highland Park, Herb. *Mrs. Heustis*; Island in Nictau Lake, *Dr. Bailey, Can. Nat. 1864, p. 88.*

20. FUMARIA, L. - - - - - FUMITORY.

- 38 F. officinalis, L. In a few places, Buctouche, St. John, *Fowler*; Woodstock, *Hay, Herb.*

VII. CRUCIFERÆ.

21. NASTURTIUM, R. Brown. - WATER-CRESS.
- 39 N. officinale, R. Brown. Hillsborough, *Brittain*; Carleton, *Hay*, Herb.
- 40 N. palustre, DC. Fredericton, *Fowler*; Kennebecasis, *Matthew*; along St. John River, Grand Falls, *Hay*.
22. BARBAREA, R. Brown. - - WINTER CRESS.
- 41 B. vulgaris, R. Brown. Weed in fields, Richibucto.
23. ARABIS, L. - - - - - ROCK CRESS.
- 42 A. petræa, Lam. On cliffs of Minister's Face, *Wetmore*.
- 43 A. hirsuta, Scop. Eel River, Restigouche County, Portland, *Fowler*, Herb.; Grand Falls, Madawaska, *Hay*.
- 44 A. Drummondii, Gray. Sand beach at Eel River, Restigouche County, St. John, *Fowler*, Herb.
24. CARDAMINE, L. - - - - BITTER CRESS.
- 45 C. pratensis, L. Fls. purple. St. Patrick, Charlotte County, *Vroom*, Herb.
- 46 C. hirsuta, L. Common. Bass River, Fredericton, Carleton, *Fowler*; Herb. *Mrs. Heustis*; Campbellton, Herb.
25. DENTARIA, L. - TOOTHWORT. PEPPER-ROOT.
- 47 D. diphylla, L. Bass River, Fredericton, *Fowler*; St. John and King's Co., Quispamsis, *Hay*, Herb.; Campbellton, *Chalmers*. Included in Cardamine by Bentham & Hooker, *Gen. Plant.* I. 70.
26. DRABA, L. - - - - WHITLOW-GRASS.
- 48 D. incana, L., var. confusa, Poir. Nashwaaksis, *Moser*, Herb. "Cambridge, Sept. 14, 1881.—I have just received a specimen of *Draba incana*, L., collected by Mr. Charles Lindon of Buffalo, N. Y., in or near Bathurst, N. B.—*Sereno Watson*."
27. SISYMBRIUM, L. - - HEDGE MUSTARD.
- 49 S. officinale, Scop. Streets of Fredericton, *Fowler*; spreading rapidly at St. Stephen, *Vroom*.
28. ERYSIMUM, L. - - - TREACLE MUSTARD.
- 50 E. cheiranthoides, L. Campbellton, *Chalmers*.

29. CAMELINA, Crantz. - - - FALSE FLAX. 64 V.  
 51 C. SATIVA, Crantz. Among flax, Coal Branch, Kent Co. 65 V.  
 30. BRASSICA, Tourn. - - - MUSTARD. 66 V.  
 52 B. SINAPISTRUM, Boissier. (*Sinapis arvensis*, L.) Troublesome weed, especially in southern counties. 67 V.  
 53 B. ALBA, Gray. (*Sinapis alba*, L.) A rare scape from gardens. 68 V.  
 54 B. NIGRA, Koch. (*Sinapis nigra*, L.) Escaped in a few places. Grand Manan, *Hay*, Herb. 69 V.  
 31. CAPSELLA, Vent. - - SHEPHERD'S PURSE.  
 55 C. BURSA-PASTORIS, Moench. Common weed. 70 V.  
 32. SENEBIERA, Poir. - WART-CRESS. SWINE-CRESS. 71 V.  
 56 S. DIDYMA, Pers. Spreading from ballast, St. John, *Fowler; Hay*, Herb. 72 V.  
 57 S. CORONOPUS, DC. Spreading from ballast, St. John, *Fowler; Hay*, Herb. 73 P. ;  
 33. LEPIDIUM, L. - PEPPERGRASS. PEPPERWORT. 74 P. ;  
 58 L. RUDERALE, L. Naturalized from ballast. 39.  
 34. CAKILE, Tourn. - - - SEA-ROCKET. 73 P. ;  
 59 C. Americana, Nutt. Common on sea beaches. Kouchibouguac, *Fowler; Sheldon's Point, Hay*, Herb. 74 P. ;  
 35. RAPHANUS, L. - - - RADISH. 40.  
 60 R. RAPHANISTRUM, L. Troublesome weed in fields at F<sup>n</sup>ton. 75 S. o

VIII. CISTACEÆ.

36. HUDSONIA, L. - - - HUDSONIA.  
 61 H. tomentosa, Nutt. Abundant on Kouchibouguac beach, *Fowler; Bathurst, Chalmers*.  
 37. LECHEA, L. - - - PINVEED. 41.  
 62 L. minor, Lam. Kouchibouguac beach, Goat Island in Grand Lake, *Fowler; Hay*, Herb.; Hopewell, *Brittain*. 75 S. o

IX. VIOLACEÆ.

38. VIOLA, L. - - - VIOLET. HEART'S EASE. 41.  
 63 V. lanceolata, L. On shore at Rothesay, *Fowler; Gondola Point and Grand Lake, Hay*, Herb., *Bulletin II. 31; Milkish, I. Allen Jack; Lake Utopia, Wetmore*. 76 S. D

- 64 V. *primulæfolia*, L. St. Andrews, *Vroom*.
- 65 V. *blanda*, Willd. Very common.
- 66 V. *renifolia*, Gray. This plant seems to be common, if the identification is correct. Douglas Road, near Portland, *Wetmore*; Petitcodiac, *Brittain*; St. John, St. Francis and Tobique Rivers, *Hay*.
- 67 V. *Selkirkii*, Pursh. Clifton, *Wetmore*, Herb.; near Half Moon Lake, St. John, and St. Francis River, *Hay*. Bulletin II. 25; Eel River, Woodstock, Fredericton, *W. T. L. Reed*.
- 68 V. *cucullata*, Ait. Abundant everywhere, and very variable. Fls. sometimes white.
- 69 V. *canina* L., var. *sylvestris*, Regel. Portland and Douglas Road, *Wetmore*; in Herb. *Mrs. Heustis*; St. Stephen, *Vroom*; St. Francis and all along St. John, Grand Manan, *Hay*, Herb.; Bathurst, *Chalmers*.
- 70 V. *Canadensis*, L. Near Woodstock, *Chalmers*, Herb.; Richmond, *Hay*; 6 miles below Woodstock, *W. T. L. Reed*.
- 71 V. *pubescens*, Ait. Fredericton, *Fowler*; Campbellton, *Hay*, Herb.; rather common on river flats, St. John River, Salmon River and Waterford, *Wetmore*; St. Francis, Eel, Tobique and Kennebecasis Rivers, *Hay*.
- 72 V. *TRICOLOR*, L. Spontaneous in gardens; ballast, St. John, *Hay*, Herb.; escaped near Bathurst, *Chalmers*; spreading from a garden near Tobique Forks, *Hay*.

X. POLYGALACEÆ.

39. POLYGALA, Tourn. - - - MILKWORT.
- 73 P. *Senega*, L. Aroostook Falls and Tobique Narrows, *Hay* and *Wetmore*, Herb. Bulletin II. 22, 29.
- 74 P. *paucifolia*, Willd. A specimen in Dr. Bailey's Herb. is labelled "Rushiagonish, Capt. Moody." St. Stephen and Milltown, *Vroom*, Herb.; Fredericton Junction, *Dr. Bailey*.

XI. CARYOPHYLLACEÆ.

40. SAPONARIA, L. - - - SOAPWORT.
- 75 S. *OFFICINALIS*, L. Queensbury Parsonage, *Dr. Bailey*; shore of Long Reach, *Hay*.
41. SILENE, L. - - - CATCHFLY. CAMPION.
- 76 S. *INFLATA*, Smith. Miramichi, Richibucto, *Fowler*; Restigouche, *Chalmers*; abundant along Upper St. John, *Hay*, Herb. Bulletin II. 28.

- 77 S. ARMERIA, L. Spontaneous in gardens.
- 78 S. NOCTIFLORA, L. Weed in cultivated grounds, Bass River, Carleton, *Fowler, Hay*, Herb.; common in meadows, Andover, *Wetmore*; spreading along St. John, Salmon and Tobique Rivers, *Hay*.
42. LYCHNIS, Tourn. - - - - - LYCHNIS.
- 79 L. VESPERTINA, Sibth. St. Stephen, *Vroom*, Herb.
- 80 L. GITHAGO, Lam. In wheat fields, common.
- 81 L. FLOS-CUCULI, L. Probably escaped from gardens, Campbellton, *Chalmers*.
43. CERASTIUM, L. - - - - - MOUSE-EAR CHICKWEED.
- 82 C. VISCOSUM, L. Common. Bass River, *Fowler*; St. John, *Hay*, Herb.
- 83 C. arvense, L. Restigouche and St. John, *Fowler*; St. Francis, near St. Hilaire, *Hay*, Herb. Bulletin II. 28.
44. STELLARIA, L. - - - - - CHICKWEED. STARWORT.
- 84 S. MEDIA, Smith. Abundant everywhere.
- 85 S. longifolia, Muhl. Fredericton, *Fowler*, Herb.; common at Salmon River, *Wetmore*.
- 86 S. longipes, Goldie. Pollett River, *Brittain*; Norton, *Hay*, Herb.; a reduced form on sand beach at Belledune, *Fowler*.
- 87 S. uliginosa, Murr. In rills from springs, Kouchibouguac, and Molus River, *Fowler*, Herb.
- 88 S. crassifolia, Ehrh. Shediac, *Brittain*.
- 89 S. borealis, Bigel. Rather rare. Bass River, *Fowler*; scarce at Salmon River, *Wetmore*.
- 90 S. humifusa, Rottboell. Rare. Harvey, York Co., *Fowler*; Shediac, *Brittain*.
45. ARENARIA, L. - - - - - SANDWORT.
- 91 A. lateriflora, L. Common. Richibucto, Shediac, *Fowler*; St. John Co., *Hay*, Herb.
- 92 A. peplodes, L. Rare. On sandy shore, Shediac, *Fowler*; Dalhousie, *Ross*; Restigouche, *Chalmers*.
46. SAGINA, L. - - - - - PEARLWORT.
- 93 S. procumbens, L. Bass River, Kent. Co., *Fowler*; Carleton, *Hay*, Herb.

94 S. no  
47. S  
95 S. AR  
48. S  
96 S. ru  
97 S. sal  
98 S. me  
49. P  
99 P. OLF  
G  
50. C  
100 C. Ca  
I  
N  
C  
101 C. Vi  
H  
51. M  
102 M. for  
Pe  
co  
on  
St.  
3-v  
lar  
he  
spa  
Fl.  
52. HY  
103 H. PER  
Jo

94 *S. nodoza*, Fenzl. Sent from Restigouche by *Chalmers*; Pea Point, Charlotte Co., *Hay*, Herb.

47. SPERGULA, L. - - - - SPURREY.

95 *S. arvensis*, L. A pestilent weed in damp soil, Miramichi.

48. SPERGULARIA, Pers. - - - SAND-SPURREY.

96 *S. rubra*, Presl. Fredericton, *Fowler*; Norton, *Hay*, Herb.; Campbellton, *Chalmers*.

97 *S. salina*, Presl. Sea shore of Kent.

98 *S. media*, Presl. Salt marshes and sands, Kouchibouguac, *Fowler*; Courtenay Bay, *Hay*, Herb.

## XII. PORTULACACEÆ.

49. PORTULACA, Tourn. - - - PURSLANE.

99 *P. oleracea*, L. Troublesome garden weed. Fredericton, Grand Lake, *Fowler*; St. Stephen, *Vroom*; Salmon River, *Wetmore*.

50. CLAYTONIA, L. - - - SPRING-BEAUTY.

100 *C. Caroliniana*, Michx. Ox-bow, Salmon River, Blackville, *Fowler*, Herb.; Clifton, *Wetmore*; in Herb. *Mrs. Heustis*; Norton, *Hay*, Bulletin II. 32; Sheldon's Point, St. John, *Chalmers*.

101 *C. Virginia*, L. "Vicinity of Bathurst, N. B. (McGill Coll. Herb.)" Macoun Cat. Can. Plants, p. 82. Have not seen it.

51. MONTIA, L.

102 *M. fontana*, L. "Sepals 2, rarely 3, persistent, suborbicular. Petals 5, hypogynous, unguiculate, with the claws a little connate; 3 of them somewhat smaller. Stamens 3, inserted on the claws of the smaller petals, very rarely 4 or 5. Styles very short, almost separate, spreading. Capsule 3-valved, 3-seeded. Seeds turgid, minutely tuberculate, large. A very small glabrous procumbent rather fleshy herb, growing in water or wet places. Leaves opposite, spatulate. Raceme few-flowered, terminal." Torr. & Gr. Fl. I. 202. Shediac, *Brittain*.

## XIII. HYPERICACEÆ.

52. HYPERICUM, L. - - - ST. JOHN'S-WORT.

103 *H. perforatum*, L. Kouchibouguasis, Bass River, *Fowler*; St. John and King's Counties, *Hay*, Herb.

- 104 *H. ellipticum*. Kouchibouguac, Norton, *Fowler, Hay*, Herb.  
 105 *H. mutilum*, L. Kouchibouguac, *Fowler*; Norton, *Hay*, Herb.;  
 Carleton, Herb. *Mrs. Heustis*.  
 106 *H. Canadense*, L. Richibucto, *Fowler*; Carleton, *Hay*, Herb.  
 Var. *major*, Gray. Rare. Bass River.  
 53. ELODES, Adans. - MARSH ST. JOHN'S-WORT.  
 107 *E. Virginica*, Nutt. Kouchibouguac, St. John, *Fowler*; St.  
 John County, *Hay*, Herb.

XIV. MALVACEÆ.

54. MALVA, L. - - - - - MALLOW.  
 108 *M. rotundifolia*, L. Bass River, Richibucto, *Fowler*; Carle-  
 ton, *Hay*, Herb.  
 109 *M. sylvestris*, L. Escaped from gardens in a few places.  
 110 *M. crispa*, L. Beside dwellings, Bass River.  
 111 *M. moschata*, L. Spontaneous in gardens, Bass River, *Fowler*;  
 Campbellton, Herb.  
 55. HIBISCUS, L. - - - - - ROSE-MALLOW.  
 112 *H. trionum*, L. A rare garden weed, Kingston, Kent Co.

XV. TILIACEÆ.

56. TILIA, L. - LINDEN. BASS-WOOD. LIME-TREE.  
 113 *T. Americana*, L. Woodstock and Grand Lake, *Fowler*; shore  
 of Long Reach, Lower Nerepis, Carleton, *Hay*, Herb.

XVI. GERANIACEÆ.

57. GERANIUM, L. - - - - - CRANESBILL.  
 114 *G. pratense*, L. Near St. John. Probably a garden scape.  
 115 *G. Carolinianum*, L. Bass River, Salmon River, *Fowler*;  
 Grand Lake, *Hay*, Herb.  
 116 *G. Robertianum*, L. Quaco Cliffs, University Herb.; Lower  
 Norton, *Arthur I. Trueman*, Herb.; Sugar Loaf at Clifton  
 and Minister's Face, *Wetmore, Hay*.  
 58. ERODIUM, L'Her. - - - - - STORKSBILL.  
 117 *E. cicutarium*, L'Her. Ballast, Carleton, *Hay*, Herb.

59. OXALIS, L. - - - - WOOD-SORREL.
- 118 O. Acetosella, L. Abundant everywhere in deep woods. A variety on Bald Mt., Tobique, with light purple flowers, *Hay*.
- 119 O. corniculata, L., var. stricta, Sav. Common. Coal Branch, Kent Co., *Fowler*; Quispamsis, *Hay*, Herb.; Carleton, Herb. *Mrs. Heustis*.
60. IMPATIENS, L. - BALSAM. JEWEL-WEED.
- 120 I. fulva, Nutt. Common. Kouchibouguac, Bass River, Miramichi, St. John, *Fowler*; Grand Lake, *Hay*, Herb.
- 121 I. pallida, Nutt. "Found by *Dr. Bailey* and *W. T. L. Reed* 1 mile below Andover, and on E. side of the river, near St. Leonard's, August 10, 1884," *Vroom in litt.*; Richmond, Carleton Co., Aug. 13th, 1884, *Hay*.

XVII. ILICINEÆ.

61. ILEX, L. - - - - HOLLY.
- 122 I. verticillata, Gray. Kouchibouguac and St. John, *Fowler*; Brookville, *Hay*, Herb.
62. NEMOPANTHES, Raf. - MOUNTAIN HOLLY
- 123 N. Canadensis, DC. Rather scarce. Kouchibouguac, Bass River, *Fowler*; Brookville and Norton, *Hay*, Herb.

XVIII. RHAMNACEÆ,

63. RHAMNUS, Tourn. - - - BUCKTHORN.
- 124 R. alnifolius, L'Her. Mouth of Eel River, Restigouche Co., near Green Head, St. John Co., *Fowler*; St. Francis River, *Hay*, Herb., Bulletin II. 24; Petitecodiac, *Brittain*.

XIX. VITACEÆ.

64. VITIS, Tourn. - - - GRAPE.
- 125 V. riparia, Michx. Banks of St. John River near Fredericton and Grand Lake, *Fowler*, *Hay*, in Herb.

XX. SAPINDACEÆ.

65. ÆSCULUS, L. - - - HORSE-CHESTNUT.
- 126 Æ. HIPPOCASTANUM, L. Planted for ornament.



66. ACER, Tourn. - - - - - MAPLE.  
 127 A. Pennsylvanicum, L. Bass River. Common in Kent.  
 128 A. epicatum, Lam. Common in damp woods.  
 129 A. saccharinum, Wang. Abundant in forests.  
 130 A. dasycarpum, Ehrh. Rather rare. Have not seen it in northern counties. Harris Cove, Kennebecasis, Fredericton, Mouth of Nashwaaksis, Shore of Grand Lake, *Fowler*; Keswick, *Hay*.  
 131 A. rubrum, L. Common forest tree.

XXI. ANACARDIACEÆ.

67. RHUS, L. - - - - - SUMACH.  
 132 R. typhina, L. Common. Bass River, Kouchibouguac, *Fowler*; Grand Manan, *Hay*, Herb.  
 133 R. Toxicodendron, L. Woodstock, Kouchibouguac, *Fowler*; common on St. John and tributaries, Jemseg, *Hay*, Herb.

XXII. LEGUMINOSÆ.

68. MEDICAGO, L. - - - - - MEDICK.  
 134 M. LUPULINA, L. Naturalized in several places.  
 135 M. MACULATA, Willd. Introduced in ballast, Carleton, *Hay*, Herb.  
 136 M. DENTICULATA, Willd. Introduced, Buetouche, St. John.  
 69. MELILOTUS, Tourn. - - - SWEET CLOVER.  
 137 M. OFFICINALIS, Willd. Escaped in a few places. Norton, *Hay*, Herb.  
 138 M. ALBA, Lam. Richibucto, *Fowler*; Woodstock, *Hay*, Herb.  
 70. TRIFOLIUM, L. - - - CLOVER. TREFOIL.  
 139 T. ARVENSE, L. Richibucto, along the railway track, St. John, *Fowler*; Lever Settlement, Charlotte Co., *Vroom*; Lancaster and Torryburn, *Hay*, Herb.  
 140 T. PRATENSE, L. Extensively cultivated.  
 141 T. repens, L. *White Clover*. Everywhere.  
 142 T. agrarium, L. Queensbury, *Dr. Bailey*; Fredericton, *Vroom*; Carleton, *Mrs. Heustis*; Salmon River, *Wetmore*; abundant along N. B. Railway between St. John and Vanceboro, Sackville, *Hay*, Herb.

143 T.  
 144 T.  
 71.  
 145 R.  
 146 R.  
 72.  
 147 A.  
 73.  
 148 O. ca.  
 74.  
 149 H. b.  
 75.  
 150 D. C.  
 76.  
 151 V. SA.  
 152 V. ni.  
 153 V. Ch.  
 154 V. TE.  
 155 V. An.  
 77. I.  
 156 L. ma.

143 T. procumbens, L. Richibucto, *Fowler*; Petitecodiac, *Mrs. Heustis*; Grand Manan, St. Andrews, Prince William, Norton, *Hay*, Bulletin II. 31.

144 T. hybridum, L. St. Stephen, frequent, *Vroom*; Norton, *Hay*, Herb.

71. ROBINIA, L. - - - - - LOCUST-TREE.

145 R. PSEUDACACIA, L. Frequently planted.

146 R. VISCOSA, Vent. Frequently planted.

72. ASTRAGALUS, L. - - - - - MILK-VETCH.

147 A. alpinus, L. Nepisiquit River, *Fowler*; Petitecodiac, *Brittain*; abundant on Upper St. John, Madawaska, *Hay*, Herb., Bulletin II. 27; "Tobique Village, *Dr. Bailey*; Mouth of Aroostook," *Vroom in litt.*

73. OXYTROPIS, L.

148 O. campestris, DC. Islands of St. John River, *Dr. Bailey*; Edmundton and along banks of Upper St. John, Mouth of Tobique, *Hay*, Herb., Bulletin II. 27.

74. HEDYSARUM, Tourn.

149 H. boreale, Nutt. Near Pabineau Falls on Nepisiquit River, *Fowler*; Grand Falls of St. John, *Moser*; abundant on Upper St. John, rarer on Tobique, Eel and other tributaries, Edmundton, *Hay*, Herb.

75. DESMODIUM, DC. - - - - - TICK-TREFOIL.

150 D. Canadense, DC. Opposite Fredericton, *Fowler*; Queensbury, *Hay*, Herb.; along Hammond River, *Brittain*.

76. VICIA, L. - - - - - VETCH. TARE.

151 V. SATIVA, L., var. angustifolia, Gray. Occasionally found in fields or on roadsides. Richibucto, *Fowler*; New Mills, Herb.; Tobique River, *Hay*.

152 V. HIRSUTA, Koch. Along the I. C. R. near St. John.

153 V. Cracca, L. Restigouche, *Fowler*; Grand Lake, *Hay*, Herb.; abundant at Andover, *Wetmore*.

154 V. TETRASPERMA, L. Along I. C. R. near St. John, *Fowler*, *Hay*, Herb.; Petitecodiac, *Brittain*.

155 V. Americana, Muhl. Belledune, *Chalmers*.

77. LATHYRUS, L. - VETCHLING. EVERLASTING PEA.

156 L. maritimus, Bigelow. Sea coast, Richibucto, St. John, *Fowler*; Hopewell Cape, *Hay*, Herb.

- 157 *L. palustris*, L. St. John, *Hay*, Herb.  
var. *myrtifolius*, Gray. Fredericton, Hampton, Kouchibouguac, *Fowler*; St. John, *Hay*, Herb.

78. AMPHICARPÆA, Ell. - - - HOG PEA-NUT.

- 158 *A. monoica*, Nutt. St. John River near Fredericton, *Fowler*; Petiteodiac, *Brittain*; Upper St. Croix, *Vroom*; Andover, *Hay*, *Wetmore*, Bulletin II. 30; Harris Cove, *Fowler*.

79. APIOS, Boerhaave. - - - GROUND-NUT.

- 159 *A. tuberosa*, Moench. St. John River opposite Fredericton and Keswick Ridge, *Fowler*; Upper St. Croix and St. Stephen, *Vroom*, Herb.; Nashwaak, *Moser*.

XXIII. ROSACEÆ.

80. PRUNUS, Tourn. - - - PLUM. CHERRY.

- 160 *P. pumila*, L. Grand Lake, *Fowler*, *Hay*; St. John, Tobique and Kennebecasis Rivers, Drury's Cove, *Hay*, Herb., Bulletin II. 28, 32; Restigouche River, University Herb.; Tobique River, *Wetmore*.  
161 *P. Pennsylvanica*, L. Very common. St. John, *Hay*, Herb.  
162 *P. Virginiana*, L. Common along rivers.  
163 *P. serotina*, Ehrh. Oxbow, Salmon River, *Fowler*; Norton, *Hay*, Herb.

81. SPIRÆA, L. - - - MEADOW-SWEET.

- 164 *S. salicifolia*, L. Common. Kouchibouguac, Richibucto, Miramichi, *Fowler*; Jemseg, *Hay*, Herb.; Indian Falls of Nepisiquit, *Dr. Bailey*, Can. Nat. 1864, p. 92.  
165 *S. tomentosa*, L. Near Napan on Richibucto road, *Fowler*; Petiteodiac, Herb. *Mrs. Heustis*; St. John and King's Counties, *Hay*, Herb., Bulletin II. 32; White fls., Jackson Settlement, Charlotte County, *Vroom*; common at Salmon River, *Wetmore*,

82. RUBUS, Tourn. - - - BRAMBLE.

- 166 *R. odoratus*, L. Old Gardens, Chamcook, Charlotte Co., *Hay*, Herb. Not known truly wild.  
167 *R. Dalibarda*, L. (*Dalibarda repens*, L.) Not rare in dry woods in Kent Co., *Fowler*; Madawaska, Bocabee, *Hay*, Herb.  
168 *R. Chamæmorus* L. Peat bogs, Kent Co., *Fowler*; St. John, *Matthew*; Point Lepreaux, *Hay*, Herb.; Herring Cove, Campobello, *Vroom*.

169 R. tu  
170 R. st  
171 R. oc  
172 R. vi  
173 R. Ca  
174 R. hi  
83. C  
175 G. all  
176 G. Vi  
177 G. ma  
178 G. stri  
179 G. riva  
84. W  
180 W. fra  
85. F  
181 F. Virg  
182 F. vesc  
86 PO  
183 P. Nor  
184 P. Cana  
K

- 169 R. triflorus, Richardson. Common. Lancaster, *Mrs. Heustis*;  
Bass River, Kouchibouguac, *Fowler*; Norton, *Hay*, Herb.
- 170 R. strigosus, Michx. Abundant on burnt waste land every-  
where.
- 171 R. occidentalis, L. Keswick, *Hay*. *Moser*, *Fowler*; said to  
occur in Westmoreland; Richmond, *Hay*.
- 172 R. villosus, Ait., var. frondosus, Torrey. Common. Kouchi-  
bouguac, *Fowler*; Nerepis, Herb. *Mrs. Heustis*; Grand  
Lake, *Hay*, Herb.
- 173 R. Canadensis, L. Bass River, *Fowler*.
- 174 R. hispidus, L. Near Weldford Station, Fredericton; Grand  
Lake, *Hay*.

83. GEUM, L. - - - - - AVENS.

- 175 G. album, Gmelin. Not reported from Northern Counties.  
Woodstock, *Fowler*; Keswick Ridge, *Moser*; St. John  
and Kennebecasis Rivers, *Hay*, Herb., near St. Hilaire,  
*Hay*. Bulletin II. 28. Eel River, York Co., *Hay*. Bul-  
letin II. 30; common about Hampton, *Brittain*; Andover,  
*Wetmore*.
- 176 G. Virginicum, L. Hampton and Petiteodiac, *Brittain*, Herb. ;  
Salmon River, *Wetmore*; Norton, *Hay*.
- 177 G. macrophyllum, Willd. Hudson's Brook, Kent Co. ; Lily Lake  
St. John Co., *Fowler*; Salmon Creek, *Wetmore*.
- 178 G. strictum, Ait. Fredericton, *Fowler*; common about Andover,  
*Wetmore*; Sussex and Apohaqui, *Brittain*.
- 179 G. rivale, L. St. John and King's Counties, *Hay*, Herb. ;  
Kouchibouguac, Richibucto River, *Fowler*.

84. WALDSTEINIA, Willd. BARREN STRAWBERRY.

- 180 W. fragarioides, Tratt. Eel River, Carleton Co., *Hay*.

85. FRAGARIA, Tourn. - - - STRAWBERRY.

- 181 F. Virginiana, Ehrh. Common everywhere.
- 182 F. vesca, L. Rare at Bass River, *Fowler*; St. John County,  
*Hay*, Herb. Bulletin II. 32; common at Andover, *Wetmore*.

86 POTENTILLA, L. CINQUE-FOIL, FIVE-FINGER.

- 183 P. Norvegica, L. Kouchibouguac, *Fowler*; Lancaster, *Hay*,  
Herb.
- 184 P. Canadensis, L., var. simplex, Torr & Gray. Rather common.  
Kouchibouguac, *Fowler*, Herb.; Nerepis, *Mrs. Heustis*.

- 185 *P. argentea*, L. Chamcook Mountain, Norton, *Hay*.
- 186 *P. arguta*, Pursh. Keswick Ridge, *Moser*; Indian Falls of Nepisiquit, *Dr. Bailey*, Can. Nat. 1864, p. 92; Grand Falls, l. c. p. 93.
- 187 *P. Anserina*, L. Common on brackish marshes and river banks.
- 188 *P. fruticosa*, L. Rothesay, *Fowler*; Madawaska and rare along Upper St. John, *Hay*, Herb.
- 189 *P. tridentata*, Ait. Buctouche, Carleton, *Fowler*; Sugar Loaf, Restigouche, *Chalmers*; Nerepis, Upper St. John, Head Waters of Tobique, Douglas Mountain, *Hay*, Herb., Bulletin II. 32.
- 190 *P. palustris*, Scop. Rather common, Lancaster, *Hay*, Herb.
87. AGRIMONIA, Tourn. - - - AGRIMONY.
- 191 *A. Eupatoria*, L. Canaan, Kent Co., *Fowler*; Campbellton, St. John River, *Hay*, Herb.
88. ROSA, Tourn. - - - - - ROSE.
- 192 *R. Carolina*, L. Common throughout the Province.
- 193 *R. parviflora*, Ehrh. (*R. lucida*, Gray, Manual, 158) Common. Bass River, Kouchibouguac, *Fowler*; Lancaster, *Hay*, Herb.
- 194 *R. blanda*, Ait. *Petitecodiac*, *Brittain*, Herb.; Tobique River, *Hay*.
- 195 *R. RUBIGINOSA*, L. Common about garden fences.
89. PYRUS, L. - " - - - PEAR. APPLE.
- 196 *P. arbutifolia*, L., var. *melanocarpa*, Hook. Bass River, Kouchibouguac, Miramichi, *Fowler*; St. John, Herb. *Mrs. Heustis*; *Hay*, Herb.
- 197 *P. Americana*, DC. Common. Often planted.
90. CRATÆGUS, L. - HAWTHORNE, WHITE THORN.
- 198 *C. OXYACANTHA*, L. Frequently planted for hedges and beside fences.
- 199 *C. tomentosa*, L. Rather common. *Brittain* sends it from Pollet River with pink fls.  
var. *pyrifolia*, Gray. Some fine specimens along the road at Government House, Fredericton.
- 91 AMELANCHIER, Media. JUNE-BERRY. SHAD-BUSH.
- 200 *A. Canadensis*, Torr & Gray. Abundant throughout the Province.

92  
201 S. A  
202 S. V  
93.  
203 T. co  
94. M  
204 M. nu  
95. C  
205 C. An  
96. F  
206 P. Car  
r  
H  
J  
97. R  
207 R. Cyl  
to  
208 R. oxy  
209 R. lacu  
210 R. pro  
211 R. flor

var. oblongifolia, Torr. & Gray. Rather rare. Bass River, Blackville, *Fowler*; Campbellton, *Hay*, Herb.; St. John, *Mrs. Heustis*.

var. oligocarpa, Gray. Common in damp woods. Bass River, *Fowler*; Carleton, *Mrs. Heustis*; *Hay*, Herb.

XXIV. SAXIFRAGACEÆ.

92 SAXIFRAGA, L. - - - - - SAXIFRAGE.

201 S. Aizoon, Jacq. On wet rocks opposite Rothesay, Herb. *Dr. Bailey*; near St. John, *Trueman*, Herb.; Narrows, St. John, and Minister's Face, *Wetmore*, *Hay*.

202 S. Virginicensis, Michx. York Co., Herb. *Dr. Bailey*; Mouth of Maetaquae, *Vroom*.

93. TIARELLA, L. - - - - - FALSE MITRE-WORT.

203 T. cordifolia, L. Lewy's Island, St. Croix River. Com. about Fredericton, *Fowler*; Norton and Tobique, *Hay*, Herb.; Herb. *Mrs. Heustis*; Tobique, near Pokiok, *Dr. Bailey*, Can. Nat. 1864, p. 86.

94. MITELLA, Tourn. - MITRE-WORT. BISHOP'S-CAP.

204 M. nuda, L. Kouchibouguac, Miramichi, *Fowler*; St. John and King's, *Hay*, Herb.; Carleton, *Mrs. Heustis*; Cedar Brook on Tobique, *Dr. Bailey*, Can. Nat. 1864, p. 86.

95. CHRYOSPLENIUM, Tourn. GOLDEN SAXIFRAGE.

205 C. Americanum, Schwein. Common. Bass River, St. John.

96. PARNASSIA, Tourn. - - GRASS OF PARNASSUS.

206 P. Caroliniana, Michx. York Co., *Dr. Bailey*; Tobique Narrows and Andover, *Wetmore*; near mouth St. John, *Hay*, Herb.; Flat Lands, Restigouche, *Chalmers*; Banks of St. John River, just above mouth of Aroostook, *Vroom*.

97. RIBES, L. - - - - - CURRANT. GOOSEBERRY.

207 R. Cynosbati, L. Specimen from Rev. (now Dr.) J. P. Sheraton, Black Lake, St. John.

208 R. oxycanthoides, L. (*R. hirtellum*, Michx.) Common.

209 R. lacustre, Poir. Rather common.

210 R. prostratum, L'Her. Common.

211 R. floridum, L. St. John.

- 212 R. rubrum, L. Kouchibouguac, *Fowler*; Norton, *Hay*, Herb.;  
Feldspar Mountain on Nepisiquit, *Dr. Bailey*, Can. Nat.  
1864, p. 91.

XXV. CRASSULACEÆ.

98. SEDUM, Tourn. - - - STONE-CROP. ORPINE.  
213 S. ACRE, L. Escaped from gardens in a few places. Hampton,  
*Brittain*, Herb.; Norton, *Hay*.  
214 S. TELEPHIUM, L. Becoming a troublesome weed in some parts  
of St. John and King's Co's.  
215 S. Rhodiola, DC. On exposed sea cliffs, St. John Co., *Fowler*;  
Minister's Face, *Wetmore*; St. George, 5 miles from coast,  
*Vroom*, Bulletin II. 32.  
99. PENTHORUM, L. - - - DITCH STONE-CROP.  
216 P. sedoides, L. Norton and Jemseg, *Hay*; Fredericton, Uni-  
versity Herb.

XXVI. DROSERACEÆ.

100. DROSERA, L. - - - - - SUN-DEW.  
217 D. rotundifolia, L. Common. Black River, Northumberland  
Co., Bass River, *Fowler*; Lily Lake, *Hay*, Herb.  
218 D. intermedia, Drev & Hayne, var. Americana, DC. (*D. longi-*  
*folia*, L.) Lake Elsie, near Richibucto, *Fowler*; St. John  
Co., *Hay*; Herb. *Mrs. Heustis*.

XXVII. HAMAMELACEÆ.

101. HAMAMELIS, L. - - - - - WITCH-HAZEL.  
219. H. Virginiana, L. Bass River, *Fowler*, Herb.; shores of Ken-  
nebecasis, Bulletin II. 32, Grand Lake, *Hay*, Herb.;  
Petiteodiac, *Brittain*.

XXVIII. HALORAGEÆ.

102. PROSERPINACA, L. - - - - - MERMAID-WEED.  
220 P. palustris, L. Rare. Digdeguash and St. Patrick, *Vroom*,  
Bulletin III. 33.  
103. HIPPURIS, L. - - - - - MARE'S-TAIL.  
221 H. vulgaris, L. Rare. St. John, Shediac, Dorchester, *Fowler*;  
Digdeguash, *Vroom*.

104. MYRIOPHYLLUM, Vaill. - WATER-MILFOIL.  
222 M. spicatum, L. Kouchibouguac, Bass River, Kennebecasis, *Fowler*; Petitecodiac, *Brittain*; Tobique River, *Hay*.  
223 M. tenellum, Bigelow. Have only seen it in Lake Elsie, near Richibucto.  
105. CALLITRICHE, L.  
224 C. verna, L. Common in stagnant water, ditches, etc. Kouchibouguac, Miramichi, Kent, *Fowler*; Spurr's Cove, Carleton Co., *Hay*.  
225 C. autumnalis, L. In a pond at Rothesay Station.

XXIX. ONAGRACEÆ.

106. EPILOBIUM, L. - - - WILLOW-HERB.  
226 E. spicatum, Lam. (E. angustifolium, L.) Abundant everywhere on recently burned land.  
227 E. palustre, L., var. lineare, Gray. Rather common. Kouchibouguac, Richibucto, *Fowler*; Spurr's Cove, *Hay*, Herb.  
228 E. coloratum, Muhl. Kouchibouguac, *Fowler*; St. John Co., *Hay*, Herb.  
107. LUDWIGIA, L. - - - FALSE LOOSESTRIFE.  
229 L. palustris, Ell. Ditches, Fredericton, *Fowler*; St. Stephen, *Vroom*, Herb.; Petitecodiac, Nauwigewauk, Taborville, *Brittain*; Nashwaaksis, *Moser*.  
108. ŒNOTHERA, L. - - - EVENING PRIMROSE.  
230 Œ. biennis, L. Common. Kouchibouguac, Richibucto, St. John, *Fowler*; Norton, *Hay*, Herb. The vars. have not been worked out.  
231 Œ. pumila, L. Bass River, *Fowler*; near St. John, *Hay*, Herb.

109. CIRCÆA, Tourm. - ENCHANTER'S NIGHTSHADE.  
232 C. Alpina L. Com. Richibucto, *Fowler*; Brookville, *Hay*, Herb.  
233 C. Lutetiana, L. Queensbury, Herb., *Dr. Bailey*; Lower Norton, *Brittain*; Eel River, York Co., Richmond, Upper St. John, Keswick Ridge, *Hay*, Herb.; Andover, *Wetmore*.

XXX. CUCURBITACEÆ.

110. ECHINOCYSTIS, Torr. & Gray. WILD BALSAM-APPLE.  
234 E. lobata, Torr. & Gr. Intervals and Islands at the mouth of the Keswick, *Moser*, *Hay*, Herb.



XXXI. FICOIDEÆ.

- 111. MOLLUGO, L. - - INDIAN CHICKWEED.
- 235 M. verticillata, L. Shore near residence of Walter S. Butler, Esq., Grand Lake. *Fowler, Hay, Herb.*

XXXII. UMBELLIFERÆ.

- 112. HYDROCOTYLE, Tourn. WATER PENNYWORT.
- 236 H. Americana, L. Common. Bass River, *Fowler*; Spurr's Cove, Tobique River, *Hay, Herb.*
- 113. SANICULA, Tourn. - BLACK SNAKEROOT.
- 237 S. Canadensis, L. Lower Norton and Sussex, *Brittain, Herb.*
- 238 S. Marilandica, L. Bass River, Woodstock, *Fowler*; Tobique, near Pokiok, *Dr. Bailey, Can. Nat. 1864, p. 83*; Campbellton, *Chalmers, Hay, Herb.*; Salmon River and Andover, *Wetmore*; abundant on Upper St. John and tributaries, *Hay, Bulletin II. 25.*
- 114. CICUTA, L. - - - WATER-HEMLOCK.
- 239 C. maculata, L. Abundant in Kent Co., *Fowler*; Campbellton and St. John Co., *Hay, Herb.* The root is a deadly poison.
- 240 C. bullifera, L. In wet places, Bass River.
- 115. SIUM, L. - - - - WATER-PARSNIP.
- 241 S. cicutafolium, Gmelin. (S. lineare, Michx.) Common. Kouchibouguac, Weldford, *Fowler*; Norton, Long Reach, *Hay, Herb.*
- 116. CRYPTOTENIA, DC. - - - HONEWORT.
- 242 C. Canadensis, C. Woodstock, *Fowler*; Mouth of Tobique, *Hay, Wetmore*; Sussex, *Brittain.*
- 117. OSMORRHIZA, Raf. - - SWEET CICELY.
- 243 O. longistylis, DC. Woodstock, *Fowler*; Pollet River near Petitecodiac, *Brittain.*
- 244 O. brevistylis, DC. Coal Branch, Bass River, *Fowler*; Quispamsis, *Hay, Herb.*
- 118. ÆTHUSA, L. - - - FOOL'S-PARSLEY.
- 245 Æ. CYNAPIUM, L. A plant from Kingston in the Univers. Herb. bears this label. No other specimen has been reported.

*Heracleum lanatum* accidentally omitted

119.  
246 L. Sc  
120.  
247 T. au  
121.  
248 S. Ca  
122.  
249 A. atr  
250 A. Gm  
123. I  
251 P. SAT  
g  
124. A  
252 A. race  
F  
H  
253 A. hispi  
F  
254 A. nudic  
ler  
M  
bet  
255 A. trifol  
wa  
W  
125. CO  
256 C. Canad  
257 C. circina  
ove

119. LIGUSTICUM, L. - - - - LOVAGE.
- 246 L. Scotieum, L. Near salt water on banks and rocks, Kent Co.,  
*Fowler*; coast near St. John, *Hay*.
120. THASPIUM, Nutt. - - - MEADOW-PARSNIP.
- 247 T. anreum, Nutt. Along the St. John River near Woodstock,  
*Fowler*, *Hay*; *Rothesay*, *Hay*, Herb.
121. SELINUM, L. - - - - HEMLOCK-PARSLEY.
- 248 S. Canadense, Michx., (Conioselinum Canadense, Torr. & Gr.)  
Bass River, *Fowler*; *Spurr's Cove*, St. John, *Hay*, Herb.
122. ARCHANGELICA, Hoffm.
- 249 A. atropurpurea, Hoffm. *Bartibog*, Northumberland Co., *Fowler*;  
*Harris Cove* on the *Kennebecasis*, *Matthew*.
- 250 A. Gmelini, DC. East side of *Courtenay Bay*, St. John, *Fowler*,  
*Hay*, Herb.
123. PASTINACA, Tourn. - - - - PARSNIP.
- 251 P. SATIVA, L. Escaped from gardens in some places. This  
genus is included in *Peucedanum* by *Benth. & Hooker*.

XXXIII. ARALIACEÆ.

124. ARALIA, Tourn. - GINSENG. WILD SARSAPARILLA.
- 252 A. racemosa, L. Not common. Bass River, Molus River,  
*Fowler*; Upper St. John and branches, *Norton*, *Hay*,  
Herb., *Bulletin II.* 32.
- 253 A. hispida, Michx. Abundant in dry burnt woods in Kent,  
*Fowler*; *Campbellton* and St. John Co., *Hay*, Herb.
- 254 A. nudicaulis, L. *Miramichi*, *Kouchibouguac*, St. John, *Fowler*,  
*Hay*, Herb.; *Carleton*, Herb. *Mrs. Heustis*; *Bald*  
*Mountain* on *Tobique*, *Dr. Bailey*, *Can. Nat.* 1864, p. 87,  
between *Pabineau* and *Grand Falls*, l. c. p. 94.
- 255 A. trifolia, Gray. *Hudson's Brook*, Kent Co., *Fowler*; *Nash-*  
*waaksis*, *Vroom*, Herb.; *Salmon Creek* and *Salmon River*,  
*Wetmore*.

XXXIV. CORNACEÆ.

125. CORNUS, Tourn. - - - CORNEL. DOGWOOD.
- 256 C. Canadensis, L. Abundant throughout the Province.
- 257 C. circinata, L'Her. *Weldford*, *Fowler*; Upper St. John, *And-*  
*over*, *Hay*, Herb.; *Petitcodiac*, *Britain*, *Bulletin II.* 32.

- 258 *C. sericea*, L. Hudson's Brook, Kent Co.  
 259 *C. stolonifera*, Michx. Fredericton, *Fowler*; Fairville, *Hay*,  
 Herb.; Mosquito Cove, Herb. *Mrs. Heustis*; Tobique near  
 Pokiok, *Dr. Bailey*, Can. Nat, 1864, p. 83, Cedar Brook,  
 p. 86.  
 260 *C. alternifolia*, L. Bass River, Molus River, Kent Co., Wood-  
 stock, Grand Lake.

DIVISION B.—GAMOPETALÆ.

XXXV. CAPRIFOLIACÆ.

126. *SAMBUCUS*, Tourn. - - - - ELDER.  
 261 *S. racemosa*, L. (*S. pubens*, Michx.) Rather common. Kou-  
 chibouguac, Bass River, *Fowler*; Norton, *Hay*, Herb.;  
 Lancaster, Herb. *Mrs. Heustis*; Island in Nictau Lake,  
*Dr. Bailey*, Can. Nat. 1864, p. 88.  
 262 *S. Canadensis*, L. Rather common. Kouchibouguac, Frederic-  
 ton, *Fowler*; Norton, *Hay*, Herb.  
 127. *VIBURNUM*, L. - - - - ARROW-WOOD.  
 263 *V. lantanoides*, Michx. Very common in Kent, *Fowler*; St.  
 John, *Hay*, Herb.; Green Head, Herb. *Mrs. Heustis*.  
 264 *V. Opulus*, L. On intervalles, Bass River, *Fowler*, Herb.;  
 Upper St. John and Madawaska, *Hay*; Westfield, Herb.  
*Mrs. Heustis*; Tobique near Pokiok, *Dr. Bailey*, Can.  
 Nat. 1864, p. 83, Cedar Brook, l. c. p. 86.  
 265 *V. pauciflorum*, Pylaie. Tay's Mills, York Co., *Moser*; Tobique,  
*Hay*.  
 266 *V. dentatum*, L. Chiputneticook Falls and St. Stephen, *Vroom*,  
 Herb.  
 267 *V. cassinoides*, L. (*V. nudum*, var. *cassinoides*, Torr. & Gr.)  
 Common throughout the Province. Howe's Road, *Hay*,  
 Herb.  
 268 *V. Lentago*, L. Chiputneticook Falls, Charlotte Co., *Vroom*.  
 128. *SYMPHORICARPUS*, Dill. - SNOWBERRY.  
 269 *S. racemosus*, Michx. Common in cultivation.

*Pa*  
 129.  
 270 *L. bor*  
 I  
 b  
 130. I  
 271 *L. cær*  
 C  
 R  
 H  
 272 *L. cilia*  
 G  
 273 *L. invo*  
 131. D  
 274 *D. trifid*  
 to  
 qu  
 132. C  
 275 *C. occid*  
 133. H  
 276 *H. cœrul*  
 hav  
 Ker  
 134. MI  
 277 *M. repens*  
 St.  
 135. GA  
 278. *G. MOLLU*  
 St. J  
 279 *G. APARIN*  
*Hay*  
 280 *G. trifidur*  
 buct

129. LINNÆA. Gronov. - LINNÆA. TWIN-FLOWER.

- 270 *L. borealis*, Gronov. Common. Kouchibouguac, Kent Co., *Fowler*; St. John, *Hay*, Herb.; Green Head, Herb. *Mrs. Heustis*; Cedar Brook on Tobique, *Dr. Bailey*, Can. Nat. 1864, p. 86, Feldspar Mountain on Nepisiquit, l. c. p. 91, between Pabineau and Grand Falls, l. c. p. 94.

130. LONICERA, L. - HONEYSUCKLE. WOODBINE.

- 271 *L. cærulea*, L. In swamps. Kouchibouguac, Weldford, Kent Co., Black River, Northumberland Co., *Fowler*; Salmon River, *Wetmore*; St. John, *Hay*, Herb.; Green Head, Herb. *Mrs. Heustis*.
- 272 *L. ciliata*, Muhl. Bass River, *Fowler*; Carleton, *Hay*, Herb.; Green Head, Herb. *Mrs. Heustis*.
- 273 *L. involucrata*, Banks. Campbellton, *Chalmers*.

131. DIERVILLA, Tourn. - BUSH-HONEYSUCKLE.

- 274 *D. trifida*, Moench. Rather common. Kouchibouguac, Hampton, *Fowler*; Lancaster, *Hay*, Herb.; Indian Falls, Nepisiquit, *Dr. Bailey*, Can. Nat. 1864, p. 92.

XXXVI. RUBIACEÆ.

132. CEPHALANTHUS, L. - - - BUTTON-BUSH.

- 275 *C. occidentalis*, L. St. Stephen and St. James, *Vroom*.

133. HOUSTONIA, L, - - - - - BLUETS.

- 276 *H. cærulea*, L. Very abundant in some parts of St. John Co.; have not noticed it farther north. Rothesay, *Fowler*; Kennebecasis, *Hay*, Herb.; Herb. *Mrs. Heustis*.

134. MITCHELLA, L, - - - - - PARTRIDGE-BERRY.

- 277 *M. repens*, L. Kouchibouguac, Bass River, Fredericton, *Fowler*; St. John and King's, *Hay*, Herb.

135. GALIUM, L. - - - - - BEDSTRAW. CLEAVERS.

- 278 *G. mollugo*, L. Spreading from ballast, Richibucto, *Fowler*; St. John, *Hay*, Herb.
- 279 *G. aparine*. Introduced in ballast, Carleton, *Fowler*; St. John, *Hay*, Herb.; Petitcodiac, *Brittain*.
- 280 *G. trifidum*, L., var. *pusillum*, Gray. In sphagnous bogs, Richibucto, Lily Lake, *Fowler*; St. John, *Hay*, Herb.

- var. latifolium, Torr. St. John, *Hay*, Herb.  
 281 *G. asprellum*, Michx. Common. Kouchibouguac, Bass River, *Fowler*; St. John Co., *Hay*, Herb.  
 282 *G. triflorum*, Michx. Kouchibouguac, *Fowler*; Norton, *Hay*, Herb.

XXXVII. VALERIANACEÆ.

136. VALERIANA, Tourn. - - - VALERIAN.  
 283 *V. sylvatica*, Banks. Richmond, Carleton Co., *Vroom*; Arthur-  
 ette, *Wetmore*; Tobique, *Hay*.

XXXVIII. COMPOSITÆ.

137. EUPATORIUM, Tourn. - THOROUGHWORT.  
 284. *E. purpureum*, L. Rather common along streams. Black River, Northumberland Co., *Fowler*; Norton, *Hay*, Herb.  
 285 *E. perfoliatum*, L. Common in Kent Co., *Fowler*; St John River and tributaries, *Hay*, Herb.  
 286 *E. ageratoides*, L. Banks of the Restigouche, *Fowler*; St. John River and Campbellton, *Hay*, Herb.; Andover, *Wetmore*.  
 138. SOLIDAGO, L. - - - GOLDEN-ROD.  
 287 *S. squarrosa*, Muhl. Kouchibouguac, *Fowler*; Harris Cove, *Mattheo*; abundant east side St. John River, between Grand Falls and Tobique, *Hay*; Andover, *Wetmore*; Restigouche, *Chalmers*.  
 288 *S. latifolia*, L. Kouchibouguac, Bass River, Point LeNim in Restigouche Co., Fredericton, *Fowler*; Lancaster, *Hay*, Herb.; Mouth of Aroostook, *Vroom*.  
 289 *S. bicolor*, L. Abundant in barrens along the Richibucto River, Kouchibouguac, *Fowler*; Norton and Tobique, *Hay*, Herb. var. concolor, Torr. & Gr. Tattagouche River, *Chalmers*, Herb.  
 290 *S. macrophylla*, Pursh. (*S. thyrsoides*, E. Meyer.) Bass River, *Fowler*; Petitcodiac, *Brittain*; Campbellton, *Chalmers*.  
 291 *S. sempervirens*, L. Salt marshes. Buetoche, *Fowler*; Courtenay Bay and Taylor's Island, *Hay*, Herb.  
 292 *S. puberula*, Nutt. Abundant in burnt barrens along the Richibucto River, *Fowler*; "A glabrate and ambiguous form," Gray. Syn. Fl.; abundant in St. John Co.; St. Stephen, *Vroom*.

P  
 293 *S. uli*  
 294 *S. spe*  
 295 *S. rug*  
 296 *S. neg*  
 297 *S. jun*  
 298 *S. sero*  
 299 *S. Cana*  
 300 *S. nemo*  
 301 *S. lance*  
 139. A  
 302 *A. macr*  
 303 *A. radul*  
 304 *A. undul*  
 305 *A. cordif*  
 306 *A. sagitt*  
 307 *A. Lindl*  
 308 *A. diffusi*  
 309 *A. panicu*  
 310 *A. tardifl*  
 and  
 form  
 A. loy  
 A. ju

- 293 *S. uliginosa*, Nutt. (*S. stricta*, Gray's Manual, p. 240.) In wet barrens along the Richibucto River, Kouchibouguac, *Fowler*.
- 294 *S. speciosa*, Nutt. St. Stephen, *Vroom*.
- 295 *S. rugosa*, Mill. (*S. altissima*, Torr. & Gr.) Abundant along fences and roadsides, Kent Co., *Fowler*; Norton, *Hay*, Herb.; St. John, Herb. *Mrs. Heustis*.
- 296 *S. neglecta*, Torr. & Gr. In swamps and bogs. St. John Co., *Hay*.
- 297 *S. juncea*, Ait. (*S. arguta*, Torr. & Gr.) Smithtown, K. C., *Brittain*; near St. John, *Hay*; St. Stephen, Woodstock, *Vroom*, Bulletin III. 33.
- 298 *S. serotina*, Ait. (*S. gigantea*, Gray's Manual, p. 245.) Restigouche, *Fowler*; St. John and King's Co.'s, *Hay*, Herb.; Fredericton, *Moser*; Digdeguash, *Hay*.
- 299 *S. Canadensis*, L. Abundant in Kent, King's and St. John Co.'s, *Fowler*; Norton, *Hay*, Herb.
- 300 *S. nemoralis*, Ait. The most abundant *Solidago* in western part of Charlotte Co., *Vroom*, Herb.
- 301 *S. lanceolata*, L. Very abundant in Kent Co., *Fowler*; Norton, *Hay*, Herb.

## 139. ASTER, Tourn. - - - ASTER. STARWORT.

- 302 *A. macrophyllus*, L. Kouchibouguac, Bass River, St. John, *Fowler*; Torryburn, *Hay*, Herb.
- 303 *A. radula*, Ait. Kouchibouguac, Richibucto, Bass River, *Fowler*; St. John, *Hay*, Herb.
- 304 *A. undulatus*, L. Reported from Petitcodiac by *Brittain*. Have not seen it.
- 305 *A. cordifolius*, L. Bass River, *Fowler*; Petitcodiac, *Brittain*; Carleton, Herb. *Mrs. Heustis*.
- 306 *A. sagittifolius*, Willd. Petitcodiac, *Brittain*. Have not seen it.
- 307 *A. Lindleyanus*, Torr. & Gr. Petitcodiac, *Brittain*. An interesting discovery.
- 308 *A. diffusus*, Ait. (*A. miser*, Gray, Manual.) Abundant in Kent Co., *Fowler*; Norton, *Hay*, Herb.; Carleton, Herb. *Mrs. Heustis*.
- 309 *A. paniculatus*, Lam. (*A. simplex*, Torr. & Gr.) Shores of Kouchibouguasis River, *Fowler*; Norton, *Hay*, Herb.
- 310 *A. tardiflorus*, L. Richibucto, *Fowler*. Only a single specimen and therefore somewhat doubtful. *A. longifolius* partly of former list. = 312. var. Carleton Hills.

*A. longifolius*, Lam. Bass River, *Fowler*.

*A. junceus*, Ait. Moncton, 1883. *Brittain*.

- 311 A. *Novi-Belgii*, L. (*A. longifolius*, Gray, Manual, 233.) Richibucto and Carleton, *Fowler*; St. John, *Hay*. This includes *A. æstivus* of former list.
- 312 A. *punicus*, L. Very common in swamps and along brooks. var. *levicaulis*, Gray, Syn. Fl. Carleton, *Fowler*; Salmon River, *Wetmore*. See 310
- 313 A. *umbellatus*, Mill. (*Diplopappus umbellatus*, Torr. & Gr.) Common. Kouchibouguac, St. John, *Fowler*; Norton, *Hay*, Herb.
- 314 A. *linariifolius*, L. (*Diplopappus linariifolius*, Hook.) Pabineau Falls, on Nepisiquit River.
- 315 A. *acuminatus*, Michx. Common in Kent, St. John, *Fowler*, *Hay*, Herb.; Carleton, Herb. *Mrs. Heustis*.
- 316 A. *nemoralis*, Ait. St. John, *Rev.* (now *Dr.*) *J. P. Sheraton*, *Hay*, Herb.; Carleton, Herb. *Mrs. Heustis*; St. Stephen, *Vroom*.
140. ERIGERON, L. - - - - FLEABANE.
- 317 E. *hyssopifolius*, Michx. (*Aster graminifolius*, Pursh.) Mouth of Aroostook, Tattagouche Falls, *Fowler*; Lower Kennebecasis and Madawaska County, *Hay*, Herb., Bulletin II. 28, 32; Flat Lands, Restigouche, *Chalmers*; common about Andover, *Wetmore*.
- 318 E. *Philadelphicus*, L. Woodstock, *Fowler*; St. John River and Norton, *Hay*, Herb.
- 319 E. *annuus*, Pers. "Rather common about Hampton and Petitcodiac." *Brittain*, Herb.
- 320 E. *strigosus*, Muhl. Norton, *Hay*, Herb.; Carleton, Herb. *Mrs. Heustis*; Bass River, *Fowler*.
- 321 E. *acris*, L., var. *Dræbachensis*, Blytt. Shore at Belledune, Restigouche, *Fowler*; Grand Falls, St. John, and Tobique, *Hay*; New Mills, *Chalmers*.
- 322 E. *Canadensis*, L. Very common. Now spreading widely over the globe. Specimens received from Beirut.
141. ANTENNARIA, Gaertn. - - - - EVERLASTING.
- 323 A. *plantaginifolia*, Hook. Common on sterile knolls.
142. ANAPHALIS, DC. - - - - EVERLASTING.
- 324 A. *margaritacea*, Benth. & Hooker. (*Antennaria margaritacea*, R. Br.) Abundant throughout.

143.  
325 G. po  
326 G. de  
  
327 G. uli  
328 G. syl  
  
144.  
329 I. HER  
I  
145.  
330 A. arto  
C  
146. X  
331 X. stru  
147. F  
332 H. scab  
no  
148. R  
333 R. hirta  
Yo  
Ha  
149. H  
334 H. decap  
335 H. ANNU  
150. BI  
336 B. fronde  
337 B. conn  
We  
338 B. cernua  
Hay  
151. AC  
339 A. Millef

143. GNAPHALIUM, L. - CUD-WEED. EVERLASTING.

- 325 *G. polycephalum*, Michx. Salmon River, *Wetmore*.  
326 *G. decurrens*, Ives. Green Head near St. John, abundant along Salmon River and Grand Lake, *Fowler*; *Petitecodiac* and Hillsborough, *Brittain*.  
327 *G. uliginosum*, L. Common in damp ground.  
328 *G. sylvaticum*, L. Abundant at Campbellton, in woods at River Charlo, *Fowler*; *Petitecodiac* and Hopewell, *Brittain*; Campbellton, Herb. Certainly native.

144. INULA, L. - - - - - ELECAMPANE.

- 329 *I. Helenium*, L. Roadside at Norton, and at Newcastle, Grand Lake, *Fowler*; Hampton, *Hay*.

145. AMBROSIA, Tourne. - - - - - RAGWEED.

- 330 *A. artemisiaefolia*, L. Seems to be rare. Coal Branch in Kent Co., *Fowler*; Norton, *Hay*, Herb.

146. XANTHIUM, Tourne. - COCKLEBUR. CLOTBUR.

- 331 *X. strumarium*, L. Cape Bald, *Brittain*. Have not seen it.

147. HELIOPSIS, Pers. - - - - - OX-EYE.

- 332 *H. scabra*, Dunal. Sugar Island, St. John River, *Moser*. Have no specimen.

148. RUDBECKIA, L. - - - - - CONE-FLOWER.

- 333 *R. hirta*, L. Occasionally in grass fields, Restigouche, Kent, York, *Fowler*; Grand Falls, Grand Lake and Norton, *Hay*, Herb.

149. HELIANTHUS, L. - - - - - SUNFLOWER.

- 334 *H. decapetalus*, L. Eel River, Carleton Co., *Hay*.  
335 *H. annuus*, L. Common in gardens.

150. BIDENS, L. - - - - - BUR-MARIGOLD.

- 336 *B. frondosa*, L. Common about dwellings.  
337 *B. connata*, Muhl. *Petitecodiac*, *Brittain*, Herb.; Chipman, *Wetmore*.  
338 *B. cernua*, L. Kouchibouguac, Belledune, *Fowler*; Norton, *Hay*, Herb.; Chipman, *Wetmore*.

151. ACHILLEA, L. . - - - - - YARROW.

- 339 *A. Millefolium*, L. Abundant everywhere.



- 340 A. Ptarmica, L. Looks like a native at River Charlo, Restigouche Co., and Kouhibouguac, Kent Co., *Fowler*, Herb.; Campbellton, *Chalmers*.
152. ANTHEMIS, L. - - - - - CHAMOMILE.
- 341 A. COTULA, L. (Maruta Cotula, DC.) Very common near dwellings.
- 342 A. ARVENSIS, L. Ballast, Buctouche.
153. CHRYSANTHEMUM, Tourn. { WHITE-WEED.  
{ OX-EYE-DAISY.
- 343 C. Leucanthemum, L. (Leucanthemum vulgare, Lam.) A very troublesome weed everywhere.
154. TANACETUM, L. - - - - - TANSY.
- 344 T. VULGARE, L. Often the only memorial of the gardens of the early settlers.
- 345 T. Huronense, Nutt. Mouth of the Upsalquitch, St. John River, near Fredericton, *Fowler*; along the Upper St. John, but not on its tributaries, *Hay*, Bulletin II. 27.
155. ARTEMISIA, L. - - - - - WORMWOOD.
- 346 A. caudata, Michx. Goat Island, Grand Lake, *Fowler*, *Hay*, Herb.
- 347 A. ABSINTHIUM, L. Abundant on roadsides, Buetouche, *Fowler*; St. John, *Hay*, Herb.
- 348 A. BIENNIS, Willd. Introduced and spreading rapidly. Kouhibouguac, Fairville, *Fowler*; Eel River, Restigouche, Herb.
- 349 A. VULGARIS, L. Waste grounds near houses in some places.
156. TUSSILAGO, Tourn. - - - - - COLTSFOOT.
- 350 T. FARFARA, L. Spreading rapidly at St. John and Carleton. In St. John it sprang up rapidly and covered sites not built upon after the Great Fire. Bulletin II. 31.
157. PETASITES, Tourn. BUTLER-BUR. SWEET COLTSFOOT.
- 351 P. palmata, Gray. (Nardosmia palmata, Hook.) Black River, Northumberland Co., along Richibucto River and Kouhibouguac River, *Fowler*; Petitcodiac, *Brittain*; St. John, *Hay*, *Goold*.
158. ARNICA, L. - - - - - ARNICA.
- 352 A. Chamissonis, Less. (A. mollis, Hook.) Grand Falls of Nepisiquit, *Fowler*; Tobique Narrows, *Hay*, Bulletin II. 30; Andover and Grand Falls of St. John, *Wetmore*.

P  
159.  
353 E. hie  
160.  
354 S. vu  
355 S. aur  
var.  
o  
I  
161. A  
356 A. LA  
var.  
SO  
162. C  
357 C. NUTA  
163. C  
358 C. ARVE  
359 C. LANG  
mo  
360 C. mutie  
To  
164. CI  
361 C. BENE  
der  
362 C. NIGRA  
Fre  
165. CI  
363 C. INTY  
Lah  
166. HI  
364 H. Canad  
Car  
Co.

159. ERECHTHITES, Rafin. - - FIREWEED.  
353 E. hieracifolia, Raf. Very common on recently burnt land.
160. SENECEO, Tourn. - - - GROUNDSEL.  
354 S. VULGARIS, L. A weed in gardens and waste grounds.  
355 S. aureus, L. What I take for the typical form was sent from Restigouche by *Mr. Chalmers*, and from Florenceville by *Mr. Hay*.  
var. Balsamite, Torr. & Gr. Grand Falls of St. John, *Fowler*; rocky shores of Kennebecasis, *Hay*; a peculiar form of this (var. lanceolatus, Oakes) has been found at Lily Lake, *Fowler*, *Hay*, and at Hartland, Carleton Co., *Hay*.
161. ARCTIUM, L. - - - BURDOCK.  
356 A. LAPPAL, L. Common near dwellings.  
var. tomentosum, Gray. Abundant at Richmond and Morrison's Mill, Fredericton, *Vroom*.
162. CARDUUS, Tourn. - PLUMELESS THISTLE.  
357 C. NUTANS, L. Spreading from ballast near Chatham.
163. CNICUS, Tourn. - - PLUMED THISTLE.  
358 C. ARVENSIS, Hoffm. (*Cirsium arvense*, Scop.) Too abundant.  
359 C. LANCEOLATUS, Hoffm. (*Cirsium lanceolatum*, Scop.) Common.  
360 C. muticus, Pursh. Kouchibouguac, *Fowler*; St. John Co., Tobique River, *Hay*, Herb.
164. CENTAUREA, L. - - BLESSED THISTLE.  
361 C. BENEDICTA, L. (*Cnicus benedictus*, L.) Escaped from gardens in a few places.  
362 C. NIGRA, L. Abundant in some places in Restigouche and at Fredericton.
165. CICHORIUM, Tourn. - - - CICHORY.  
363 C. INTYBUS, L. In a few places. Bathurst, *Fowler*; Grand Lake, *Hay*, Herb.
166. HIERACIUM, Tourn. - - HAWKWEED.  
364 H. Canadense, Michx. Kouchibouguac, Bass River, *Fowler*; Campbellton, Herb.; Grand Lake, Tobique, *Hay*; King's Co., *Brittain*, Bulletin II. 32; Belledune, *Chalmers*.

365 *H. scabrum*, Michx. Kouchibouguac, Bass River, *Fowler*; Campbellton, *Hay*.

366 *H. UMBELLATUM*, L. Belledune, *Chalmers*. Identified by Prof. Macoun.

167. *LEONTODON*, L. - - - - HAWKBIT.

367 *L. AUTUMNALIS*, L. Kouchibouguac, Richibucto River, *Fowler*; Partridge Island, *Hay*, Herb.; St. Hilaire, *Hay*, Bulletin II. 28, 32.

168. *TARAXACUM*, Haller. - - - DANDELION.

368 *T. OFFICINALE*, Weber, (*T. Dens-leonis*, Desf.) Abundant everywhere.

169. *LACTUCA*, Tourn. - - - - LETTUCE.

369 *L. Canadensis*, L. Common in Kent Co., *Fowler*; Welsford, *Hay*, Herb.; between Pabineau and Grand Falls, *Dr. Bailey*, Can. Nat. 1864, p. 94.

370 *L. integrifolia*, Bigel. (*L. Canadensis*, var. *integrifolia*, Gray, Manual.) Rare. Norton, *Hay*, Herl.

371 *L. leucophaea*, Gray. (*Mulgedium leucophaeum*, DC.) Common in Kent and Northumberland, *Fowler*; Campbellton, *Hay*, Herb.

170. *PRENANTHES*, Vaill. - RATTLESNAKE-ROOT.

372 *P. racemosa*, Michx. (*Nabalus racemosus*, Hook.) Mouth of Kennebec isis, *Fowler*, *Hay*, Herb.; Campbellton, *Chalmers*; Grand Falls, *Wetmore*, Bulletin II. 32.

373 *P. serpentaria*, Pursh. Along the Richibucto River, *Fowler*; Quispamsis, *Hay*, Herb. (*Nabalus albus* of former list.)

374 *P. altissima*, L. Bass River, Kouchibouguac, *Fowler*.

375 *P. Mainensis*, Gray. "Shore of St. John River at St. Francis, *Pringle*; very common on the St. John River, *Goodale*." Has not been reported by N. B. botanists. Gray, Syn. Flor.

171. *SONCHUS*, Tourn. - - - SOW-THISTLE.

376 *S. OLERACEUS*, L. Weed in gardens, St. John, St. Andrew's, St. Stephen, *Hay*, *Vroom*, Herb.

377 *S. ASPER*, Vill. Gardens and rich soil around dwellings.

378 *S. ARVENSIS*, L. Garden weed.

*Pr*  
172. L.  
379 *L. Car*  
M  
J  
H  
380 *L. Dor*  
A  
W  
381 *L. spic*  
382 *L. Kal*  
St  
K  
383 *L. infla*  
Lo  
  
173. C  
384 *C. RAPU*  
a r  
Vr  
385 *C. rotun*  
Ne  
wh  
Bul  
386 *C. aparin*  
Her  
Ha  
  
174. GA  
387 *G. dumos*  
Fou  
388 *G. resinos*  
umb  
  
175. VAC  
389 *V. Penns*  
var. ni  
390 *V. Canad*  
burn

XXXIX. LOBELIACEÆ.

172. LOBELIA, L.

- 379 L. *Cardinalis*, L. St. Andrew's and St. Stephen, *Vroom*; Magaguadavie, St. Croix and tributaries, *Matthew* and *Vroom*; Eel River, Carleton Co., Digdeguash River, *Hay*, Herb.
- 380 L. *Dortmanna*, L. Rather rare. Lake Elsie near Richibucto, *Fowler*; foot Douglas Mountain, *Hay*; Clifton Lake, *Wetmore*; Grand Manan, *D. McL. Smith*.
- 381 L. *spicata*, Lam. Moncton, *Brittain*. Have not seen it.
- 382 L. *Kalmii*, L. Limestone hills, St. John, *Matthew*; shores of St. John and Restigouche Rivers, *Fowler*; St. John and King's Co.'s, *Hay*, Herb.
- 383 L. *inflata*, L. Very common throughout the Province.  
Lobelia is included in Campanulaceæ by Benth. & Hooker.

XL. CAMPANULACEÆ.

173. CAMPANULA, TOURN. - BELL-FLOWER. HARE-BELL.

- 384 C. *RAPUNCULOIDES*, L. St. John, Carleton, *Fowler*, *Hay*, Herb.; a roadside weed at Richmond Corner and St. Stephen, *Vroom*.
- 385 C. *rotundifolia*, L. Abundant near St. John, Grand Falls of Nepisiquit, Nigadoo, Blackville, *Fowler*; abundant everywhere in clefts of rocks on St. John and tributaries, *Hay*, Bulletin II. 28, 30; Herb. Have not seen it in Kent.
- 386 C. *aparinoides*, Pursh. St. George and St. Stephen, *Vroom*, Herb.; Grand Lake, Gondola Point, Westfield, King's Co., *Hay*; St. George, Chipman, Andover, *Wetmore*.

XLI. VACCINIACEÆ.

174. GAYLUSSACIA, H. B. K. - HUCKLEBERRY.

- 387 G. *dumosa*, Torr. & Gr. In a peat bog near Richibucto, *Fowler*; St. Stephen, *Vroom*, Herb.
- 388 G. *resinosa*, Torr. & Gr. Rather common in Kent and Northumberland Co.'s, Grand Lake, *Fowler*.

175. VACCINIUM, L. - BLUEBERRY. BILBERRY.

- 389 V. *Pennsylvanicum*, Lam. Abundant in barrens and swamps. var. *nigrum*, Wood., has black berries without a bloom.
- 390 V. *Canadense*, Kalm. Less abundant than the preceding, in burned barrens and swamps.

- 391 *V. corymbosum*, L. Apparently rare. Grand Lake, *Hay*; St. Stephen, *Vroom*.  
 var. *atroceum*, Gray. A single specimen found at Weldford on the Richibucto River seems to belong to this form.
- 392 *V. caespitosum*, Michx. St. Francis River and Upper St. John, *Hay*, Bulletin II. 25, 27.

176. OXYCOCCUS, Pers. - - - CRANBERRY.

- 393 *O. palustris*, Pers. Common in peat bogs everywhere and on marshes round the coast.
- 394 *O. macrocarpus*, Pursh. Peat bogs and marshes. Abundant.

177. CHIOGENES, Salisb. - - - SNOWBERRY.

- 395 *C. hispidula*, Torr. & Gr. Abundant in mossy damp woods.

XLII. ERICACEÆ.

178. ARCTOSTAPHYLUS, Adans. - BEARBERRY.

- 396 *A. Uva-ursi*, Spreng. Kennebecasis Island, *Hay*, Herb.

179. GAULTHERIA, Kalm, L. - AROMATIC WINTERGREEN.

- 397 *G. procumbens*, L. Common in Northumberland and Kent, *Fowler*, and in St. John and King's, *Hay*, Herb. "I never found it north of Bathurst," *Chalmers*.

180. CASSANDRA, Don. - - - LEATHER-LEAF.

- 398 *C. calyculata*, Don. Abundant in bogs throughout the Province, *Fowler*; St. John, *Hay*, Herb.; Bald Mountain on the Tobique, *Dr. Bailey*, Can. Nat. 1864, p. 87.

181. EPIGÆA, L. - - - MAYFLOWER.

- 399 *E. repens*, L. Abundant in Kent and Northumberland, *Fowler*; St. John and King's, *Hay*, Herb. "I never found it north of Bathurst," *Chalmers*.

182. ANDROMEDA, L. - - - ANDROMEDA.

- 400 *A. polifolia*, L. Common in cold bogs. Kent Co., *Fowler*; St. John, *Hay*, Herb.

183. KALMIA, L. - - - AMERICAN LAUREL.

- 401 *K. angustifolia*, L. Abundant in dry barrens.
- 402 *K. glauca*, Ait. Common. Kouchibouguac, along Richibucto River, *Fowler*; St. John, Jemseg, *Hay*, Herb.

184. I
- 403 *L. latif*  
*B*  
*M*  
*C*
185. R
- 404 *R. Rhod*  
 in  
*Il*
186. PY
- 405 *P. minor*  
 hou
- 406 *P. secun*
- 407 *P. chlora*  
 stod  
 pres  
 date  
 mon
- 408 *P. elliptic*  
 Indi
- 409 *P. rotund*  
 var. in  
*Hay*  
 var. ass  
 var. uli
187. MO
- 410 *M. uniflor*  
 land  
 Rive
188. CHI
- 411 *C. umbella*  
*Foule*
189. MON
- 412 *M. uniflora*  
 and K

184. LEDUM, L. - - - - LABRADOR TEA.

- 403 L. latifolium, Ait. Common in wet barrens. Kouchibouguac, Bass River, *Fowler*; St. John Co., *Hay*, Herb.; Herb. *Mrs. Heustis*; Bald Mountain on the Tobique, *Dr. Bailey*, Can. Nat. 1864, p. 87, Nictau Lake, l. c. p. 88.

185. RHODODENDRON, L. - - - ROSE-BAY.

- 404 R. Rhodora, Don. Covering extensive tracts of swampy ground in the northern counties, *Fowler*; St. John and King's, *Hay*, Herb.

186. PYROLA, Tourn. - WINTERGREEN. SHINLEAF.

- 405 P. minor, L. Hopewell, *Brittain*. Said to be found at Dalhousie.
- 406 P. secunda, L. Common in rich woods.
- 407 P. chloranthes, Swartz. Lily Lake, *Hay*, Herb.; between Woodstock and Houlton, *Vroom*. "A specimen of this plant presented to the Herbarium by I. Allan Jack, Esq., is dated Fredericton, 1844; Petitecodiac, *Brittain*; Richmond, *Vroom*." Bulletin III. 34.
- 408 P. elliptica, Nutt. Very common. Norton, *Hay*, Herb.; Indian Falls of Nepisiquit, *Dr. Bailey*, Can. Nat. 1864, p. 92.
- 409 P. rotundifolia, L. Common. Bass River, *Fowler*.  
 var. incarnata, DC. Fredericton, *Dr. Bailey*; Edmundton, *Hay*.  
 var. asarifolia, Hook. Woodstock, *Fowler*.  
 var. uliginosa, Gray. Andover, *Hay*, Bulletin II. 30.

187. MONESES, Salisb. - ONE-FLOWERED PYROLA.

- 410 M. uniflora, Gray. Rather common. Kent and Northumberland Co., *Fowler*; St. John Co., *Hay*, Herb.; Salmon River, *Wetmore*.

188. CHIMAPHILA, Pursh. - - - PIPSISSEWA.

- 411 C. umbellata, Nutt. Common. Bass River, Kouchibouguac, *Fowler*; Grand Lake, *Hay*, Herb.

XLIII. MONOTROPEÆ.

189. MONOTROPA, L. - INDIAN PIPE. PINE-SAP.

- 412 M. uniflora, L. Restigouche and Kent Co.'s, *Fowler*; St. John and King's, *Hay*, Herb.

190. HYPOPITYS, Scop. - - - PINE-SAP.  
 413 H. lanuginosa, Nutt. Growing in shade of pine trees at St. Andrew's, *Vroom*; Petitecodiac, *Brittain*, Herb.; Andover, *Wetmore*; Lily Lake, *Hay*; Sheldon's Point, Lancaster, *Mrs. H. W. Frith*. (Monotropa Hypopitys of former editions.)

XLIV. PLUMBAGINACEÆ.

191. STATICE, Tourn. - - - SEA-LAVENDER.  
 414 S. Limonium, L., var. Caroliniana, Gray. Common in salt marshes round the coast. Kouchibouguac, *Fowler*; Sackville and St. John, *Hay*, Herb.

XLV. PRIMULACEÆ.

192. PRIMULA, J. - - - PRIMROSE.  
 415 P. farinosa, L. Restigouche, *Chalmers*.  
 416 P. Mistassinica, Michx. The form found on Lower Kennebecasis Dr. Gray pronounces "P. Mistassinica passing into P. farinosa." Flat Lands, Restigouche, *Chalmers*.

193. STEIRONEMA, Raf.  
 417 S. ciliatum, Raf. (*Lysimachia ciliata*, L.) Salmon River in Kent Co., Fredericton, *Fowler*; St. John and King's, *Hay*.

194. LYSIMACHIA, L. - - - LOOSESTRIFE.  
 418 L. quadrifolia, L. "Sandy or gravelly soil, New Brunswick," Gray, Syn. Flor. Our botanists have not reported it.  
 419 L. stricta, Ait. Common in Kent Co., *Fowler*; St. John and King's, *Hay*, Herb.; Lancaster, Herb. *Mrs. Heustis*.  
 420 L. thyrsoiflora, L. Rather rare. Shediac, *Fowler*; Hopewell Cape and Norton, *Hay*, Herb.

195. TRIENTALIS, L. - CHICKWEED-WINTERGREEN.  
 421 T. Americana, Pursh. Common throughout the Province.

196. GLAUX, L. - - - SEA-MILKWORT.  
 422 G. maritima, L. Common round the coast everywhere.

197. ANAGALLIS, L. - - - PIMPERNEL.  
 423. A. ARVENSIS, L. Rare. St. Andrew's, *Vroom*; St. John, *Hay*, Herb.

*Pr*  
 198. S  
 424 S. Valc  
 sn  
 199. F  
 425 F. Ame  
 To  
 426 F. samb  
 427 F. pubes  
 200 AP  
 428 A. andro  
 Joh  
 Dr.  
 429 A. canna  
 Kes  
 Her  
 201. AS  
 439 A. incarn  
 Wel  
 Char  
 Vroo  
 431 A. Cornut  
 Wes  
 202 GEN  
 432 G. Amarel  
 Resti  
 Burn  
 433 G. linearis,  
 Nash  
 and L

198. SAMOLUS, Tourn. - - WATER-PIMPERNEL.

424 S. Valerandi, L., var. Americanus, Gray. Muddy shore of a small brook at Kouchibouguac, only place I have noticed it.

XLVI. OLEACEÆ.

199. FRAXINUS, Tourn. - - - - ASH.

425 F. Americana, L. Common. Kent Co., *Fowler*; abundant on Tobique, *Hay*.

426 F. sambueifolia, Lam. Common. Abundant on Tobique, *Hay*.

427 F. pubescens, Lam. Bellisle, *Brittain*. On Darling's Island.

XLVII. APOCYNACEÆ.

200 APOCYNUM, Tourn. - DOGBANE. INDIAN HEMP.

428 A. androsæmifolium, L. Common in Kent Co., *Fowler*; St. John and King's, *Hay*, Herb.; Nepisiquit River, *Fowler*, *Dr. Bailey*, Can. Nat. 1864, p. 94.

429 A. cannabinum, L. Restigouche, Pabineau Falls, Grand Lake, Keswick Islands, *Fowler*; St. John and King's, *Hay*, Herb.; abundant on Upper St. John, *Wetmore*, *Hay*.

XLVIII. ASCLEPIADACEÆ.

201. ASCLEPIAS, L. - - - - MILKWEED.

430 A. incarnata, L. Keswick Valley, *Dr. Bailey*, *Hay*, *Fowler*, Welsford, Upper St. John and tributaries, Eel River, *Hay*; Charlotte and Carleton Co.'s, St. James and Richmond, *Vroom*; Pokiok and Tobique River, *Wetmore*.

431 A. Cornuti, Decaisne. In old fields, Fredericton, *Fowler*; Westfield and Upper St. John, *Hay*.

XLIX. GENTIANACEÆ.

202 GENTIANA, L. - - - - GENTIAN.

432 G. Amarella, L., var. acuta, Hook. f. At the mouth of the Restigouche, *Chalmers*, Herb.; Keswick Ridge, *G. H. Burnett*; Falls at the mouth of the St. John, *Hay*.

433 G. linearis, Fresl. Near Weldford Station, Kent Co., *Fowler*; Nashwaaksis, *Moser*, Herb.; near Green River, *Dr. Bailey* and *Mr. Reed*.



203. *HALENIA*, Borkh. - - SPURRED GENTIAN.
- 434 *H. deflexa*, Griseb. Abundant along the Restigouche River and at the mouth of the Upsalquitch, Carleton, St. John Co., *Fowler*; rather abundant on St John and its tributaries, Andover, *Hay*, Bulletin II. 30.
204. *MENYANTHES*, Tourn. - - BUCKBEAN.
- 435 *M. trifoliata*, L. Common in bogs, Kent, *Fowler*; St. John and King's, *Hay*, Herb.
205. *LIMNANTHEMUM*, Gmelin. - FLOATING-HEART.
- 436 *L. lacunosum*, Griseb. St. Stephen, *Vroom*; abundant in a lake near residence of G. G. King, Esq., Salmon River, Queen's Co., *Hay*, Herb.; King's Co., *Brittain*; Clifton Lake, *Wetmore*; Musquash, St. John Co., *D. McL. Smith*.

L. POLEMONEACEÆ.

206. *COLLOMIA*, Nutt.
- 437 *C. linearis*, Nutt. This plant is a native of the region from Winnipeg and Mackenzie River west to the Pacific. It is therefore strange to find it growing at Eel River, Restigouche Co., on sands often covered by the tides and on the high rocky hill towards Dalhousie. If it is not native, it is at least thoroughly naturalized.

*Polemonium esculentum*, L. Trout Lake, *Brittain*. 1885

LI. BORRAGINACEÆ.

207. *CYNOGLOSSUM*, Tourn. - HOUND'S-TONGUE.
- 438 *C. Virginicum*, L. *Petitcodiac*, *Brittain*, Herb.
208. *ECHINOSPERMUM*, Swartz. - STICKSEED.
- 439 *E. Virginicum*, Lehm. Sand beach at Eel River, Restigouche, *Fowler*, *Chalmers*; Carleton, *Hay*, Herb. (*E. Lappula* of former list.)
209. *SYMPHYTUM*, Tourn. - - - COMFREY.
- 440 *S. OFFICINALE*, L. Apparently naturalized in St. John Cemetery.
210. *LYCOPSIS*, L. - - - - - BUGLOSS.
- 441 *L. ARVENSIS*, L. Sand beach, Eel River, Restigouche, Herb.
211. *MERTENSIA*, Roth. - - SEA-LUNGWORT.
- 442 *M. maritima*, Don. Sand beaches, Restigouche, St. John.

*Pre*

212. M

443 *M. laxa*  
*F*  
*inc*  
*He*

444 *M. ARV*  
Ke

213. LI

445 *L. OFFIC*  
Co.

214. EC

446 *E. VULGA*  
*Bri*

215. CO

447 *C. sepium*  
the c

*C. ARVENS*

216. CUS

448 *C. Gronov*  
aceou  
Islan  
*Britt*  
Utop

217. SOL

449 *S. NIGRUM*  
Carle

450 *S. DULCAM*

218. DAT

451 *D. STRAMC*  
*Fowl*  
Steph

452 *D. TATULA*  
heaps

212. MYOSOTIS, L. - - - FORGET-ME-NOT.

443 M. *laxa*, Lehm. In wet ditches at Point LeNim, Restigouche, *Fowler*; rather abundant in southern sections of the Province, Howe's Lake, *Hay*, Herb.; Carleton, Herb. *Mrs. Heustis*.

444 M. *arvensis*, Hoffm. Spreading from a garden at Bass River, Kent Co., 1876, *Fowler*; St. Andrew's, *Vroom*.

213. LITHOSPERMUM, L. - - - GROMWELL.

445 L. *officinale*, L. Roadside near Campbellton, Restigouche Co., *Fowler*, *Hay*, Herb.

214. ECHIUUM, L. - VIPER'S BUGLOSS. BLUEWEED.

446 E. *vulgare*, L. Fredericton, *Fowler*; Petitcodiac and Quaco, *Brittain*, Herb.

LII. CONVOLVULACEÆ.

215. CONVOLVULUS, L. - - - BINDWEED.

447 C. *sepium*, L., var. *Americanus*, Sims. Rather common near the coast. Kouchibouguac, *Fowler*; Norton, *Hay*, Herb.

C. *arvensis*, L. Cultivated fields, Richibucto. Rare.

216. CUSCUTA, Tourn. - - - DODDER.

448 C. *Gronovii*, Willd. Twining around grasses and other herbaceous plants, mouth of Kennebecasis, *Fowler*; Partridge Island, Lower St. John, Grand Lake, *Hay*; Cape Bald, *Brittain*; Nashwaaksis and St. Stephen, also at Lake Utopia, Bulletin III. 32.

LIII. SOLANACEÆ.

217. SOLANUM, Tourn. - - - NIGHTSHADE.

449 S. *nigrum*, L. Occasionally near dwellings. Kouchibouguac, Carleton, *Fowler*, *Hay*, Herb.

450 S. *dulcamara*, L. Near dwellings, Fredericton.

218. DATURA, L. - STRAMONIUM. THORN-APPLE.

451 D. *stramonium*, L. Rarely escaped from gardens in Kent, *Fowler*; weed well established at St. Andrew's and St. Stephen, *Vroom*.

452 D. *tatula*, L. Garden weed. Richibucto, Carleton, ballast heaps, St. John.

219. HYOSCYAMUS, Tourn. - - - HENBANE.  
 453 H. NIGER, L. Scarce. Miramichi, Richibucto, Bass River,  
*Fowler*; Dalhousie, St. John, *Hay*, Herb., Bulletin II. 31.

LIV. SCROPHULARIACEÆ.

220. VERBASCUM, L. - - - - - MULLEIN.  
 454 V. THAPSUS, L. Rather rare. Newcastle, Northumberland  
 Co., Kouchibouguasis, Kent Co., *Fowler*; Dalhousie,  
 Herb.; King's County, *Hay*.  
 455 V. BLATTARIA, L. St. Andrew's, Richmond, *Vroom*.

221. LINARIA, Tourn. - - - - - TOAD-FLAX.  
 456 L. Canadensis, Dumont. St. Stephen, *Vroom*, Herb.  
 457 L. VULGARIS, Mill. Escaped from gardens in a few places.  
 Kouchibouguac, Bass River, *Fowler*; Woodstock, *Hay*,  
 Herb.

222. CHELONE, Tourn. - SNAKE-HEAD. TURTLE-HEAD.  
 458 C. glabra, L. Common in Kent Co., *Fowler*; Norton, *Hay*.  
 Herb.

223. MIMULUS, L. - - - - - MONKEY-FLOWER.  
 459 M. ringens, L. Common in wet places.

224. ILYSANTHES, Raf. - - - - - FALSE PIMPERNEL.  
 460 I. gratioloides, Benth. In wet sandy or gravelly places subject  
 to inundation. Bass River, *Fowler*; York County,  
*Moser*.

225. LIMOSELLA, L. - - - - - MUDWORT.  
 461 L. aquatica, L., var. tenuifolia, Hoffm. Very rare. Near St.  
 Stephen, *Vroom*.

226. VERONICA, L. - - - - - SPEEDWELL.  
 462 V. VIRGINICA, L. Have only seen it in gardens.  
 463 V. Americana, Schw. Common in brooks and ditches. Kent  
 Co., *Fowler*; Norton, *Hay*, Herb.; Andover and Chip-  
 man, *Wetmore*.  
 464 V. scutellata, L. Common. Along Richibucto River, Wood-  
 stock, *Fowler*; Norton, *Hay*, Herb.  
 465 V. officinalis, L. Dry fields or hills, Norton, and near Frederic-  
 ton, *Fowler*; Campbellton, *Chalmers*.

*Pro*  
 466 V. serpy  
 N  
 467 V. pere  
 da  
 468 V. ARVI  
 V  
 469 V. AGR  
 spr  
 tou  
 227. CA  
 470 C. pallid  
 gou  
 Ho  
 228. EU  
 471 E. officin  
 St.  
 ton,  
 var. T  
 abun  
 229. BA  
 472 B. ODONT  
 cast  
 mou  
 230. PE  
 473 P. Canad  
 474 P. Furbis  
 Rive  
 more  
 231. RH  
 475 R. Crista-  
 on B  
 St. J  
 232. ME  
 476 M. Americ  
 John

466 V. serpyllifolia, L. Very common. Bass River, *Fowler*; Norton, *Hay*, Herb.; Carleton, Herb. *Mrs. Heustis*.

467 V. peregrina, L. Have only seen it at Kouchibougnasis in damp waste ground.

468 V. ARVENSIS, L. Chamcook Mt., *Hay*, Herb.; St. Andrew's, *Vroom*; Portage, King's Co., and Hillsborough, *Brittain*.

469 V. AGRESTIS, L. Escaped from a garden at Richibucto, and spreading, *Fowler*; Fredericton, University Herb.; Carleton, *Hay*, Herb.; St. Andrew's, *Vroom*.

227. CASTILLEIA, Tourn. - - - PAINTED CUP.

470 C. pallida, Kunth., var. septentrionalis, Gray. Hills of Restigouche, *Fowler*; common on Upper St. John, Tobique, *Hay*, Herb., Bulletin II. 28.

228. EUPHRASIA, Tourn. - - - EYEBRIGHT.

471 E. officinalis, L. Very abundant on dry hills near Bathurst and St. John, *Fowler*; McAdam Brook, Charlotte Co., Carleton, *Hay*, Herb.

var. Tartarica, Benth. (E. latifolia, Pursh.) Cape Bald and abundant on a marsh at Cape Enrage, *Brittain*.

229. BARTSIA, L.

472 B. ODONTITES, Hudson. Westmoreland Co., *Trueman*; Lancaster beach, and abundant on an island at the Falls, mouth of St. John, *Hay*, Herb.

230. PEDICULARIS, Tourn. - - - LOUSEWORT.

473 P. Canadensis, L. Grand Falls of the St. John, *Moser*.

474 P. Furbishiae, Watson. Rather common on both sides St. John River between Grand Falls and Andover, *Hay* and *Wetmore*; abundant at mouth of Aroostook, *Vroom*.

231. RHINANTHUS, L. - - - YELLOW-RATTLE.

475 R. Crista-galli, L. Common near St. John, North of Miramichi on Bathurst road; Blacklands, Restigouche Co., *Fowler*; St. John and King's, Herb.

232. MELAMPYRUM, Tourn. - - - COW-WHEAT.

476 M. Americanum, Michx. Common in Kent Co., *Fowler*; St. John, *Hay*, Herb.

LIV. OROBANCHACEÆ.

233. APHYLLON, Mitchell. - - - CANCER-ROOT.  
 471 A. uniflorum, Gray. Nashwaaksis, *Fowler*; Petitcodiac, *Brittain*.  
 234. EPIPHEGUS, Nutt.  
 473 E. Virginiana, Bart. Rather rare. Bass River, Kent Co., and Norton, *Fowler*.

LVI. LENTIBULARIACEÆ.

235. UTRICULARIA, L. - - - BLADDERWORT.  
 479 U. clandestina, Nutt. Shallow water of a small lake near Richibucto, *Fowler*; Cape Enrage, *Brittain*.  
 480 U. vulgaris, L. Common in stagnant waters and slow streams and lakes. Richibucto River, also Rothesay, *Fowler*, Herb.; McAdam Junction, *Hay*.  
 481 U. intermedia, Hayne. St. Patrick, Charlotte Co., *Vroom*, Herb.; Otty's Lake near Hampton, *Brittain*, Herb.  
 482 U. cornuta, Michx. Common in peat bogs. St. John, *Matthew*, *Sheraton*, *Hay*, Herb.; near Richibucto, *Fowler*.

LVII. VERBENACEÆ.

236. PHRYMA, L. - - - - - LOPSEED.  
 483 P. Leptostachya, L. Woodstock and Keswick Ridge, *Fowler*; Upper St. John, *Hay*, Herb., Bulletin II. 30; Lower Norton, *Brittain*; Andover, *Wetmore*.  
 237. VERBENA, Tourn. - - - - - VERVAIN.  
 484 V. urticifolia, L. Keswick Ridge, *Moser*, *Hay*, Herb.; Eel River, York Co., *Hay*, Bulletin II. 30.  
 485 V. hastata, L. Waste grounds. Kouchibouguac, *Fowler*; Norton and Tobique, *Hay*, Herb., Bulletin II. 30; Andover and St. George, *Wetmore*.

LVIII. LABIATÆ.

238. MENTHA, Tourn. - - - - - MINT.  
 486 M. VIRIDIS, L. Baltimore, Albert Co., *Brittain*.  
 487 M. PIPERITA, L. Sparingly escaped from gardens.  
 488 M. ARVENSIS, L. Field at Norton.  
 489 M. SATIVA, L. Escaped from gardens.

*Pre*  
 490 M. Can  
 an  
 var.  
 go  
 239. L  
 491 L. Virg  
 Ho  
 492 L. sinua  
 Ki  
 240. H  
 493 H. puleg  
 Fo  
 241. CA  
 494 C. Clinop  
 Fo  
 An  
 Co.  
 242. NE  
 495 N. CATAR  
 Hay  
 496 N. Glech  
 side  
 Hay  
 243. SC  
 497 S. laterifl  
 498 S. galeric  
 244. BR  
 499 B. vulgar  
 245. STA  
 500 S. palustr  
 St. S  
 tain,  
 Buct  
 246. GA  
 501 G. TETRA  
 Herb

- 490 M. Canadensis, L. Common in Kent Co., *Fowler*; St. John and King's, *Hay*, Herb.  
var. glabrata, Benth. Rather rare. St. John and Restigouche, *Fowler*; Campbellton, *Hay*, Herb.; *Chalmers*.

239. LYCOPUS, Tourn. WATER HOREHOUND. BUGLE-WEED.

- 491 L. Virginicus, L. Common in Kent Co., *Fowler*; King's, *Hay*, Herb.  
492 L. sinuatus, Ell. Common in wet grounds, Kent Co., *Fowler*; King's, *Hay*, Herb.

240. HEDEOMA, Pers. - - - PENNYROYAL.

- 493 H. pulegioides, Pers. In a waste field at Green Head, St. John, *Fowler*, *Hay*, Herb.

241. CALAMINTHA, Tourn. - - - CALAMINT.

- 494 C. Clinopodium, Benth. Open woods on hillsides, Restigouche, *Fowler*; Keswick Ridge, *Burnett*; Eel River, *Hay*, Herb.; Andover and Tobique River, *Wetmore*; Bellisle, King's Co., *Brittain*.

242. NEPETA, L. - - - CAT-MINT.

- 495 N. CATARIA, L. Rarely escaped from gardens, Grand Lake, *Hay*, Herb.  
496 N. Glechoma, Benth. About dwellings. Abundant on roadsides between Shediac and Shemogue, *Fowler*; Clifton, *Hay*, Herb.

243. SCUTELLARIA, L. - - - SKULLCAP.

- 497 S. lateriflora, L. Common everywhere. Herb.  
498 S. galericulata, L. Common everywhere. Herb.

244. BRUNELLA, Tourn. - SELF-HEAL. HEAL-ALL.

- 499 B. vulgaris, L. Common everywhere. Herb.

245. STACHYS, Tourn. - - - WOUNDWORT.

- 500 S. palustris, L. Napan Bridge, Northumberland Co., *Fowler*; St. Stephen and Chamcook, *Voom*, Herb.; Quaco, *Brittain*; Partridge Island, *Hay*; introduced in ballast at Buctouche, *Fowler*.

246. GALEOPSIS, L. - - - HEMP-NETTLE.

- 501 G. TETRAHIT, L. A very common weed in rich damp soil. Herb.

247. LEONURUS, L. - - - MOTHERWORT.  
 502 L. CARDIACA, L. Common in waste places near dwellings.  
 248. LAMIUM; Tourn. - - - DEAD-NETTLE.  
 503 L. AMPLEXICAULE, L. St. Andrew's, *Vroom*.  
 249. TEUCRIUM, L. - - - - GERMANDER.  
 504 T. Canadense, L. Sand beach, Kouchibouguac.

LIX. PLANTAGINACEÆ.

250. PLANTAGO, Tourn. - PLANTAIN. RIBWORT.  
 505 P. MAJOR, L. Everywhere near dwellings.  
 506 P. decipiens, Barneoud. Miramichi and St. John. (P. maritima of former list.)  
 507 P. LANCEOLATA, L. St. John, *Hay*, Herb.; *Fowler*.

DIVISION C.—APETALÆ.

LX. AMARANTACEÆ.

251. AMARANTUS, Tourn. - - - AMARANTH.  
 508 A. RETROFLEXUS, L. Along the shore at Fredericton, *Fowler*; Salmon River, *Wetmore*.

LXI. CHENOPODIACEÆ.

252. CHENOPODIUM, L. - PIGWEED. GOOSEFOOT.  
 509 C. ALBUM, L. A very common weed.  
 510 C. URBICUM, L. At the railway depot, Carleton, *Fowler*, *Hay*; Petitcodiac, *Brittain*.  
 511 C. HYBRIDUM, L. Petitcodiac, *Brittain*.  
 512 C. BOTRYS, L. On the shore at Government House. Probably an outcast from the garden.  
 513 C. capitatum, Benth. & Hook. (*Blitum capitatum*, L.) Indigenous, or at least fully naturalized about Andover and mouth of Aroostook, *Wetmore*; Eel River, Restigouche Co., Herb.; Tobique River and Grand Lake, apparently indigenous, *Hay*, Bulletin II. 29.

*Pre*  
 253. A  
 514 A. patu  
 al  
 var.  
 var.  
 254. S  
 515 S. herba  
 255. SU  
 516 S. marit  
 256. SA  
 517 S. Kali,  
*Fo*  
 257. PO  
 518 P. Penns  
*mor*  
 519 P. incarna  
 Rive  
 520 P. PERSIC  
 521 P. Hydro  
 boug  
*more*  
 522 P. acre, H  
 523 P. hydrop  
 King  
 524 P. amphib  
 River  
 525 P. Hartwr  
 list.)  
 in Ke  
 526 P. avicular  
 8 star  
 Britta  
 Mone  
 quite  
 or an  
 527 P. maritim  
 Kent.

253. ATRIPLEX, Tourn. - - - - ORACHE.  
514 A. patula, L. Several forms of this very variable plant occur along the sea coast. *Fowler*.  
var. hastata, Gray. Carleton, *Hay*, Herb.  
var. littoralis, Gray. St. John, *Hay*.  
254. SALICORNIA, Tourn. - GLASSWORT. SAMPHIRE.  
515 S. herbacea, L. Common in salt marshes round the coast.  
255. SUAEDA, Forskel. - - - - SEE-BLITE.  
516 S. maritima, Domortier. Salt marshes on the coast.  
256. SALSOLA, L. - - - - SALTWORT.  
517 S. Kali, L. Common on sand beaches along the Gulf shore, *Fowler*; St. Andrew's, *Vroom*, Herb.

LXII. POLYGONACEÆ.

257. POLYGONUM, L. - - - - KNOTWEED.  
518 P. Pennsylvanicum, L. Shediac, *Moser*; Salmon River, *Wetmore*.  
519 P. incarnatum, Ell. Moncton and Keswick, *Moser*; Salmon River, *Wetmore*.  
520 P. PERSICARIA, L. Common about dwellings and barns.  
521 P. Hydropiper, L. Common in wet grounds and ditches, Kouchibouguac, *Fowler*; Norton, *Hay*, Herb.; Chipman, *Wetmore*.  
522 P. acre, H. B. K. Fredericton, *Moser*; Bass River, *Fowler*.  
523 P. hydropiperoides, Michx. Keswick, *Moser*; Bloomfield, King's Co., *Brittain*, Herb.  
524 P. amphibium, L., var. aquaticum, Willd. In water, Hammond River, *Fowler*.  
525 P. Hartwrightii, Gray. (P. amphibium, var. terrestre of former list.) Wet soil, or in water, Oxbow, Salmon River, and in Kent Co., *Fowler*; Tobique, *Hay*.  
526 P. aviculare, L. Abundant in yards. The European plant with 8 stamens occurs at the railway depot, Carleton. Mr. Brittain sends specimens of a plant from salt marshes at Moncton, Hillsborough, etc., which grows erect, nearly or quite 2 feet high, and which seems to be a tall form of this or an allied species.  
527 P. maritimum, L. Sandy sea shore of Northumberland and Kent.



- 528 *P. arifolium*, L. Low grounds, Kouchibouguac, *Fowler*; Hope-  
well, *Brittain*.  
 529 *P. sagittatum*, L. Kouchibouguac, Fredericton, *Fowler*; Jem-  
seg and King's Co., *Hay*, Herb.  
 530 *P. CONVOLVULUS*, L. Kouchibouguac and Bass River, *Fowler*;  
Eel River, Restigouche, Herb.  
 531 *P. cilinode*, Michx. Climbing over shrubs and fallen trees,  
Kouchibouguac, *Fowler*; Norton, *Hay*, Herb.  
 532 *P. dumetorum*, L., var. *scandens*, Gray. Norton, *Fowler*; along  
St. John River, *Hay*.  
 533 *P. TAR ARICUM*, L. Extensively cultivated and spontaneous  
for a few years.

253. FAGOPYRUM, Tourn. - - - BUCKWHEAT.

- 534 *F. ESCULENTUM*, Moench. Cultivated and remaining as a weed  
for a few years.

259. RUMEX, L. - - - DOCK. SORREL.

- 535 *R. FRATENSIS*, Mert. Campbellton, *Chalmers*; also Herb.  
 536 *R. orbiculatus*, Gray. In wet places, Kent, *Fowler*; Campbell-  
ton, *Chalmers*.  
 537 *R. salicifolius*, Weinmann. Shore of Richibueto River, *Fowler*;  
Campbellton, Herb.; Campbellton and New Mills, *Chal-  
mers*.  
 538 *R. CRISPUS*, L. Fredericton. In grass fields.  
 539 *R. obtusifolius*, L. Tabusintac on Bathurst road, *Fowler*;  
Germain Brook, King's Co., *Brittain*.  
 540 *R. maritimus*, L. Shore near mouth of Molus River, and  
Shediac.  
 541 *R. ACETOSELLA*, L. The most abundant weed in old and barren  
fields.  
 542 *R. occidentalis*, Watson. Campbellton, *Chalmers*. *Fide* Prof.  
Macoun.

LXIII. ARISTOLOCHIACEÆ.

260. ASARUM, Tourn. - - - WILD-GINGER.

- 543 *A. Canadense*, L. Fredericton, *Fowler*; Queensbury, *Dr.  
Bailey*; Morrison's Mills, *room*, Herb.; common about  
Andover in rich woods, *Wetmore*; abundant on Upper St.  
John and St. Francis, Salmon (Victoria Co.) and Eel  
Rivers, *Hay*, Bulletin II. 25; Darling's Island, *Brittain*.

261. D  
 544 D. palus  
 B  
 262. SI  
 545 S. Canad  
 St.  
 Na  
 263. CO  
 546 C. livida,  
 Por  
 264. EU  
 547 E. polygo  
 548 E. HELIOS  
 Herb  
 549 E. CYPARI  
 about  
 550 E. PEPLUS  
 weed  
 265. ULM  
 551 U. Americ  
 266. HUM  
 552 H. LUPULU  
 267. CAN  
 553 C. sativa, L  
 ler; ne  
 268. URTI  
 554 U. gracilis,  
 Fowler

LXIV. THYMELEACEÆ.

261. DIRCA, L. - LEATHERWOOD. MOOSEWOOD.  
544 D. palustris, L. Keswick Ridge, *G. H. Burnett*; Hillsborough,  
*Brittain*.

LXV. ELEAGNACEÆ.

262. SHEPHERDIA, Nutt. - - - SHEPHERDIA.  
545 S. Canadensis, Nutt. Clinging to rocky banks at Grand Falls,  
St. John, and at Cape Bon Ami, Restigouche, *Fowler*;  
Narrows, Tobique River, *Hay*, Bulletin II. 30.

LXVI. SANTALACEÆ.

263. COMANDRA, Nutt. - BASTARD TOAD-FLAX.  
546 C. livida, Richardson. Near St. John, *Matthew*, *Brittain*;  
Port Elgin, *Brittain*.

LXVII. EUPHORBIACEÆ.

264. EUPHORBIA, L. - - - - - SPURGE.  
547 E. polygonifolia, L. Kouchibouguae beach in sand.  
548 E. HELIOSCOPIA, L. River Charlo and Buctouche, *Fowler*,  
Herb.  
549 E. CYPARISSIAS, L. Have only noticed it in gardens, *Fowler*;  
about roadsides in a few places, Nashwaak, *Vroom*.  
550 E. PEPLUS, L. Spontaneous in gardens, Richibucto, *Fowler*;  
weed in gardens, Chipman, *Wetmore*.

LXVIII. URTICACEÆ.

265. ULMUS, L. - - - - - ELM.  
551 U. Americana, L. Common on rich intervals.  
266. HUMULUS, L. - - - - - HOP.  
552 H. LUPULUS, L. Cultivated. Scarcely wild.  
267. CANNABIS, Tourn. - - - - - HEMP.  
553 C. sativa, L. Spontaneous in a few places. Richibucto, *Fow-*  
*ler*; near Taborville Bridge, King's Co., *Brittain*, Herb.  
268. URTICA, Tourn. - - - - - NETTLE.  
554 U. gracilis, Ait. Rather common in waste places. Bass River,  
*Fowler*, Herb.; Salmon River (Victoria Co.), *Hay*.

- 555 U. *DIOICA*, L. Ballast, St. John, *Hay*, Herb.  
 556 U. *URENS*, L. Bass River, *Fowler*; St. John, *Hay*, Herb.; St. Andrew's, *Vroom*.

269. *LAPORTEA*, Gaudichaud. - WOOD-NETTLE.

- 557 L. *Canadensis*, Gaudichaud. Rich intervalles, Kouchibouguac, Bass River, *Fowler*; Norton, *Hay*, Herb.

270. *PILEA*, Lind. - RICHWEED. CLEARWEED.

- 558 P. *pumila*, Gray. Odell's Grove at Frederieton, Norton, *Fowler*, *Hay*; Petitecodiac and Havelock, *Brittain*; a troublesome weed on grounds of C. E. Grosvenor at Canterbury, *Hay*.

LXIX. JUGLANDACEÆ.

271. *JUGLANS*, L. - - - - - WALNUT.

- 559 J. *cinerea*, L. Rich woods along the St. John and its tributaries. Have not seen it in northern counties, *Fowler*; forming beautiful groves at Eel River, Woodstock and elsewhere on Upper St. John, Norton, *Hay*, Herb.

LXX. MYRICACEÆ.

272. *MYRICA*, L. - BAYBERRY. WAX-MYRTLE.

- 560 M. *Gale*, L. Wet places in barrens and along low shores of ponds and streams. Common.  
 561 M. *cerifera*, L. Sand beach on the sea shore, Kent and Northumberland, *Fowler*; Petitecodiac, *Brittain*.  
 562 M. *asprenifolia*, Endl. (*Comptonia asplenifolia*, Ait.) Abundant in dry gravelly ground, Kent, *Fowler*; Norton, McAdam Junction, *Hay*, Herb.

LXXI. CUPULIFERÆ.

273. *BETULA*, L. - - - - - BIRCH.

- 563 B. *lenta*, L. Common forest tree.  
 564 B. *lutea*, Michx. f. Common forest tree in rich soil.  
 565 B. *alba*, L., var. *populifolia*, Spach. Common.  
 566 B. *papyracea*, Ait. Common in rich soil everywhere.  
 567 B. *pumila*, L. Swamps and bogs, Richibucto.

274. *ALNUS*, Gaertn. - - - - - ALNER.

- 568 A. *incana*, Willd. Along streams everywhere.

*Pro*  
 569 A. *viridula*, L.  
 275. C.  
 570 O. *Virginiana*, L.  
 276. C.  
 571 C. *rostrata*, L.  
 277. Q.  
 572 Q. *rubra*, L.  
 573 Q. *macrocarpa*, L.  
 of  
 574 Q. *coccinea*, L.  
 tain  
 not  
 278. FA  
 575 F. *ferruginea*, L.  
 279. SA  
 576 S. *humilis*, L.  
 577 S. *discolor*, L.  
 mon  
 578 S. *petiolaris*, L.  
*Vroom*  
 579 S. *cordata*, L.  
 Salm  
 580 S. *livida*, L.  
 581 S. *viminalis*, L.  
 582 S. *lucida*, L.  
 583 S. *nigra*, L.  
 584 S. *FRAGILIS*, L.  
 585 S. *BABYLONICA*, L.  
 586 S. *myrtilloides*, L.  
 587 S. *pyrifolia*, L.  
 land,  
 Gray

569 *A. viridis*, DC. Common in damp soil. Richibucto, *Fowler*; Carleton, *Hay*, Herb.

275. OSTRYA, Scop. - HOP-HORNBEAM. LEVER-WOOD.

570 *O. Virginica*, Willd. Rather rare. Bass River, Fredericton.

276. CORYLUS, L. - - - - HAZELNUT.

571 *C. rostrata*, Ait. Common along banks of streams.

277. QUERCUS, L. - - - - OAK.

572 *Q. rubra*, L. Rather common. Kent, Northumberland, York.

573 *Q. macrocarpa*, Michx. (*Q. alba* of former list.) Near residence of W. S. Butler, Esq., Grand Lake. Rare.

574 *Q. coccinea*, Wang., var. *ambigua*, Grav. Is said by Mr. Brittain to be quite common at Bellisle, King's Co. I have not seen it.

278. FAGUS, L. - - - - BEECH.

575 *F. ferruginea*, Ait. Common forest tree.

## LXII. SALICACEÆ.

279. SALIX, L. - - - - WILLOW.

576 *S. humilis*, Marshall. Dry barrens. Bass River, Kouchibouguac.

577 *S. discolor*, Muhl. Banks of streams and wet grounds. Common.

578 *S. petiolaris*, Smith. Petitecodiac, *Brittain*; St. Stephen, *Vroblm.*

579 *S. cordata*, Muhl. Bass River, *Fowler*; Petitecodiac, *Brittain*; Salmon River, *Wetmore.*

580 *S. livida*, Wahl., var. *occidentalis*, Gray. Very common.

581 *S. viminalis*, L. Cultivated in a few places.

582 *S. lucida*, Muhl. Rather common. Kouchibouguac.

583 *S. nigra*, Marsh. Have only seen it at Harris Cove.

584 *S. fragilis*, L. Commonly planted.

585 *S. BABYLONICA*, Tourn. Cultivated for ornament.

586 *S. myrtilloides*, L. In bogs, Richibucto.

587 *S. pyrifolia*, Anderss. Abundant in Gloucester, Northumberland, Kent Co.'s, also at Carleton, St. John Co. (Not in Gray's Manual.)

280. POPULUS, L. - - - - POPLAR. ASPEN.  
 588 P. tremuloides, Michx. Common forest tree.  
 589 P. grandidentata, Michx. Rather common.  
 590 P. balsamifera, L. Not common. Kouchibouguac, Bass River.  
 var. candicans, Gray. Planted for ornament.

LXXIII. EMPETRACEÆ.

281. EMPETRUM, L. - - - - CROWBERRY.  
 591 E. nigrum, L. Hillocks in bogs, common. Hanging over rocky  
 banks some places along Bay Chaleur.

*Corema Conradii.* — *Carlton, St John Co.*  
 SUB-CLASS II. — GYMNOSPERMÆ.

LXXIV. CONIFERÆ.

282. THUJA, L. - - - - CEDAR.  
 592 T. occidentalis, L. Common throughout the Province.  
 283. JUNIPERUS, L. - - - - JUNIPER.  
 593 J. communis, L. Dry pastures and barren hills. St. John,  
*Fowler; King's, Charlotte, Hay.*  
 594 J. Sabina, L., var. procumbens, Pursh. Sand beach, Eel River,  
 Restigouche Co., *Fowler; N. Head of Grand Manan, Hay,*  
 Herb.  
 284. TAXUS, Tourn. - - - - GROUND-HEMLOCK.  
 595 T. baccata, L., var. Canadensis, Gray. Common in Kent,  
*Fowler; St. John, Hay.*  
 285. PINUS, Tourn. - - - - PINE.  
 596 P. Banksiana, Lambert. Abundant on dry burnt barrens in  
 Kent and Northumberland, *Fowler; "forms thick groves  
 extending for miles about Petitcodiac and Anagance,"  
 Vroom, Bulletin II. 36.*  
 597 P. resinosa, Ait. Abundant in many places in old forests.  
 598 P. Strobus, L. Our most valuable forest tree.  
 286. PICEA, Link. - - - - SPRUCE.  
 599 P. alba, Link. (*Abies alba*, Michx.) Common throughout.  
 600 P. nigra, Link. (*Abies nigra*, Poir.) Common throughout.

*Pre*  
 287. T  
 601 T. Can  
 N  
 30  
 288. A  
 602 A. balsa  
 289. L  
 603 L. Ame  
 CLAS  
 290. VA  
 604 V. spirali  
 291. MI  
 605 M. ophiog  
 Eel  
 606 M. monop  
 no s  
 292. LI  
 607 L. Læselii  
 Step  
 Eel  
 293. CAL  
 608 C. borealis  
 Bath  
 vicin  
 C. F.  
 Park

287. TSUGA, Carr. - - - - - HEMLOCK.  
601 T. Canadensis, Endl. (*Abies Canadensis*, Michx.) In Kent,  
Northumberland, Gloucester and King's, forming large  
forests.  
288. ABIES, Tourn. - - - - - FIR.  
602 A. balsamea, Marshall. Common everywhere.  
289. LARIX, Tourn. - - LARCH. HACHMATAC.  
603 L. Americana, Michx. Common throughout.
- 

CLASS II.--ENDOGENOUS PLANTS.

---

LXXV. HYDROCHARIDACEÆ.

290. VALISNERIA, Licheli. - TAPE-GRASS. EEL-GRASS.  
604 V. spiralis, L. In shallow water. St. Stephen, *Vroom*.

LXXVI. ORCHIDACEÆ.

291. MICROSTYLIS, Nutt. - ADDER'S-MOUTH.  
605 M. ophioglossoides, Nutt. Several places in Kent, Fredericton;  
Eel River and Grand Lake, *Hay*.  
606 M. monophyllos, Lind. Little Rocher, *Brittain*, *Vroom*. Have  
no specimen.  
292. LIPARIS, L. - - - - - TWAYBLADE.  
607 L. Læselii, Richard. Harris Cove, Lily Lake, *Fowler*; St.  
Stephen, Fredericton, *Vroom*; Grand Lake, Kennebecensis,  
Eel River, *Hay*.  
293. CALYPSO, Salisb. - - - - - CALYPSO.  
608 C. borealis, Salisb. Rare. "Collected at Somerset Vale,  
Bathurst, by J. Meehan, 1881; also a fine bunch from  
vicinity of Indiantown, as early as 1861, by one of Prof.  
C. F. Hart's pupils." Many specimens found in Highland  
Park, near St. John, by G. U. Hay, 1882; also at Petit-

codiac by Mr. Vroom. Bulletin I. 22. Two specimens collected in Odell's Grove, Fredericton, in Herb. *Dr. Bailey*.

294. CORALLORHIZA, R. Brown. - CORAL-ROOT.

- 609 *C. innata*, R. Br. Scarce. Black River in Northumberland Co., Carleton, *Fowler*, Herb.; Andover, *Wetmore*.  
 610 *C. multiflora*, Nutt. Rather common in Kent Co., *Fowler*; St. John, *Hay*, Herb.

295. LISTERA, R. Brown. - - - TWAYBLADE.

- 611 *L. cordata*, R. Brown. Rare. Kouchibouguac, *Fowler*; Dorchester, *Hay*, Herb.  
 612 *L. convallarioides*, Hook. On the brink of a densely shaded brook near the Manse, Bass River, *Fowler*; Upper St. John and Madawaska River, *Hay*, Herb.; near Campbellton, *Chalmers*.

296. SPIRANTHES, L. - - - LADIES' TRESSES.

- 613 *S. latifolia*, Torr. Titusville, *Brittain*, Herb.; Andover and Tobique River, *Hay*, *Wetmore*; Eel River, Carleton Co., *Hay*; North Mountain, *Vroom*.  
 614 *S. Romanzoviana*, Chamisso. Kouchibouguac, Richibucto, *Fowler*; Campbellton, and St. John and King's Co.'s, *Hay*, Herb.  
 615 *S. gracilis*, Bigel. Baie Verte, *A. I. Trueman*, Herb., Bulletin I. 22; Petitcodiac, *Brittain*.

297. GOODYERA, R. BROWN. RATTLESNAKE-PLANTAIN.

- 616 *G. repens*, R. Brown. Sugar Loaf, Restigouche Co., and Bass River, *Fowler*; Long Lake, St. John Co., Upper St. John and Tobique, *Hay*, Herb.; St. Stephen, St. George, St. James', St. David's, *Vroom*; Tobique River, Clifton and Chipman, *Wetmore*.  
 617 *G. pubescens*, R. Br. Petitcodiac, *Brittain*, Herb.

298. ARETHUSA, L. - - - ARETHUSA.

- 618 *A. bulbosa*, L. Scarce. Richibucto, Fredericton, *Fowler*; Norton, *Hay*, Herb.; Chipman, *Wetmore*; Musquash, St. John Co., *D. McL. Smith*.

299. CALOPOGON, R. Br. - - - CALOPOGON.

- 619 *C. pulchellus*, R. Br. Bogs. Richibucto, Kouchibouguac, Herb.; Tay's Mills, York Co., *Moser*.

300. P  
 620 P. ophi  
*ler*  
 W  
 301. O  
 621 O. spect  
 Ca  
 302. H  
 622 H. tride  
*Ha*  
 623 H. viridi  
 Pet  
 For  
 624 H. hyper  
*Hay*  
 625 H. dilata  
*Fo*  
*Hay*  
 Fall  
 626 H. obtusa  
 Cam  
 John  
 627 H. Hooke  
 Lake  
 628 H. orbicul  
 Herb  
 etin  
 629 H. blepha  
 Fred  
 man,  
 630 H. lacera,  
 Ham  
 Port  
 631 H. psychod  
*Fo*  
 632 H. fimbriat  
 303. CYP  
 633 C. parviflor  
 near I





- 634 *C. pubescens*, Willd. Rather rare. Galloway, near Richibucto, *Fowler*; Edmundton, *Hay*, Herb.; common at Andover, *Wetmore*.
- 635 *C. spectabile*, Swartz. St. John Co., *Fowler*, *Hay*, Herb.; Restigonche, *Chalmers*; York and Carleton Co.'s, *Vroom*; Andover and Tobique River, *Wetmore*.
- 636 *C. acaule*, Ait. Rather common. Black River, Northumberland Co., Fredericton, *Fowler*; Lily Lake, *Hay*, Herb.; with white fls., St. Francis River, *Hay*, Bulletin II. 25.

LXXVII. IRIDACEÆ.

304. IRIS, L. - - - - - BLUE-FLAG.
- 637 *I. versicolor*, L. Abundant in wet places throughout the Province.
305. SISYRINCHIUM, L. . BLUE-EYED GRASS.
- 638 *S. Bermudiana*, L. Among grass everywhere.

LXXVIII. LILIACEÆ.

306. SMILAX, Tourn. - - - CARRION-FLOWER.
- 639 *S. herbacea*, L. Rothesay, Fredericton, *Fowler*; rather common along St. John River, St. Hilaire, *Hay*, Herb., Bulletin II. 28.
307. POLYGONATUM, Tourn. - SOLOMON'S-SEAL.
- 640 *P. biflorum*, Ell. Fredericton, *Fowler*; St. Stephen, *Vroom*, Herb.; common at Salmon River and Andover, *Wetmore*; St. Francis and Upper St. John, *Hay*, Bulletin II. 25; Petitecodiac, *Brittain*.
308. STREPTOPUS, Michx. - TWISTED-STALK.
- 641 *S. amplexifolius*, DC. Kent and Northumberland, *Fowler*; Campbellton, *Hay*, Herb.; Lancaster, Herb. *Mrs. Heustis*; rather common at Salmon River, *Wetmore*; Tobique, *Dr. Bailey*, Can. Nat. 1864, p. 83, Bald Mountain, p. 87.
- 642 *S. roseus*, Michx. Very common in northern counties, *Fowler*; St. John and King's, *Hay*, Herb.
309. SMILACINA, Desf. - FALSE SOLOMON'S-SEAL.
- 643 *S. racemosa*, Desf. Bass River, *Fowler*; Welsford, *Hay*, Herb.; Nerepis Valley, Herb. *Mrs. Heustis*.

*Pro*

644 *S. stella*  
va  
be  
To  
F

645 *S. trifol*  
Co

646 *S. bifoli*

310. II

647 II. FULV

311. AL

648 *A. tricod*  
Eel

649 *A. Schær*  
Rot  
mon  
Bul  
Can

312. LI

650 *L. Canad*  
Her

313. ER

651 *E. Americ*  
coun  
Co.,  
at N  
*Mrs.*

314. TOI

652 *T. glutino*  
Upp  
Bulle

315. UVU

653 *U. sessilifo*  
Lake,  
Lake,

- 644 *S. stellata*, Desf. Moist banks, Kouchibouguac, *Fowler*; intervalles, Salmon River, *Wetmore*; St. John River, Kennebecasis, *Hay*; Petitcodiac, *Brittain*; Cedar Brook on Tobique, *Dr. Bailey*, Can. Nat. 1864, p. 86. Indian Falls, Nepisiquit, l. c. p. 92.
- 645 *S. trifolia*, Desf. Kouchibouguac and Hudson's Brook, Kent Co., *Fowler*; St. John Co., *Hay*, Herb.
- 646 *S. bifolia*, Ker. Very common throughout.

310. HEMEROCALLIS, L. - - - DAY-LILY.

- 647 *H. fulva*, L. Occasionally escapes from gardens.

311. ALLIUM, L. - - - ONION. GARLIC.

- 648 *A. tricoccum*, Ait. Hampton and Petitcodiac, *Brittain*, Herb.; Eel River, Carleton Co., *Hay*, Bulletin II. 30.
- 649 *A. Schœnoprasum*, L. Pabineau Falls on Nepisiquit, and Rotheray, *Fowler*; Nauwigewauk, *Hay*, Herb.; very common along Upper St. John, Tobique and Eel Rivers, *Hay*, Bulletin II. 28; Indian Falls of Nepisiquit, *Dr. Bailey*, Can. Nat. 1864, p. 92; Hammond River, *D. McL. Smith*.

312. LILIUM, L. - - - - - LILY.

- 650 *L. Canadense*, L. Common on intervalles and moist meadows. Herb.

313. ERYTHRONIUM, L. - DOG'S-TOOTH VIOLET.

- 651 *E. Americanum*, Smith. Have not noticed it in northern counties except a single plant near Hudson's Brook, Kent Co., abundant at Fredericton, *Fowler*; near St. John and at Norton on Kennebecasis, *Hay*, Herb.; St. John, Herb. *Mrs. Heustis*.

314. TOFIELDIA, Huds. - - - FALSE ASPHODEL.

- 652 *T. glutinosa*, Willd. Flat Lands, Restigouche, *Chalmers*; along Upper St. John, Eel and Tobique Rivers, *Hay*, Herb., Bulletin II. 27.

315. UVULARIA, L. - - - - - BELLWORT.

- 653 *U. sessilifolia*, L. St. John and King's, *Hay*, Herb.; Lily Lake, Herb. *Mrs. Heustis*; Kouchibouguac and Grand Lake, *Fowler*.

316. CLINTONIA, Raf. - - - CLINTONIA.

- 654 C. borealis, Raf. St. John and King's, *Hay*, Herb.; St. John, Herb. *Mrs. Heustis*; Kouchibouguac, *Fowler*; along Tobique River, *Dr. Bailey*, Can. Nat. 1864, p. 83, 86. Bald Mt., p. 87, between Pabineau and Grand Falls, p. 94.

317. MEDEOLA, Gronov. - INDIAN CUCUMBER-ROOT.

- 655 M. Virginica, L. Kouchibouguac and Bass River, *Fowler*; St. John, *Hay*, Herb.

318. TRILLIUM, L. - THREE-LEAVED NIGHTSHADE.

- 656 T. erectum, L. Have not noticed it in the northern counties, though Chalmers sends it from Restigouche. Common about St. John, Loch Lomond, St. Croix River, *Fowler*; Upper St. John and tributaries, Norton, *Hay*, Herb.; St. John, Herb. *Mrs. Heustis*; Tobique near Pokiok, *Dr. Bailey*, Can. Nat 1864, p. 82. Bald Mt., p. 87.  
var. alba from Eel River, Carleton Co., *W. T. L. Reed*.

- 657 T. cernuum, L. Gallows Hill near Napan, Northumberland Co., Bass River, Oxbow on Salmon River, *Fowler*; common on river flats at Andover and Salmon River, *Wetmore*; St. Francis and Kennebecasis, Norton, *Hay*, Herb., Bulletin II. 25; Tobique at Two Brooks, *Dr. Bailey*, Can. Nat. 1864, p. 85.

- 658 T. erythrocarpum, Michx. Common, especially in recently burned grounds in northern counties, *Fowler*; St. John and King's Co., *Hay*, Herb.; St. John, Herb. *Mrs. Heustis*.

319. VERATRUM, Tourn. - { INDIAN POKE.  
WHITE HELLEBORE.

- 659 V. viride, Ait. Rather common on intervalles, Restigouche, Richibucto, St. John and Kennebecasis Rivers.

320. ZYGADENUS, Michx. - - - ZYGADENE.

- 660 Z. glaucus, Nutt. Sand beach at Belledune.

LXXIX. PONTEDERIACEÆ.

321. PONTEDERIA, L. . - PICKEREL-WEED.

- 661 P. cordata, L. Kennebecasis, near railway station, Fredericton, Grand Lake, *Fowler*; several places on the St. John River, Tobique Lake, Norton, *Hay*, Herb.; Herb. *Mrs. Heustis*; common in western parts of Charlotte Co., *Vroom*; Clifton Lake, *Wetmore*.

322. X

662 X. flexu  
St.  
lan

323. JU

663 J. effusu  
var. co  
else

664 J. filiform  
stoc

665 J. Balticu

666 J. Stygiu  
*Fou*  
near

667 J. bufoniu

668 J. Gerard  
St. J

669 J. tenuis,  
Ando  
var. see

670 J. Greenii,  
guasi

671 J. pelocarp

672 J. articul  
Clifto

673 J. nodosus,  
Ando  
Upp

674 J. Canaden  
Kent.  
var. coar

Bocab

324. LUZU

675 L. pilosa, W

676 L. parviflor  
reaux

677 L. campestr

LXXX. XYRIDACEÆ.

322. XYRIS, L. - - - YELLOW-EYED GRASS,

- 662 X. flexuosa, Muhl., var. pusilla, Gray. Kendrick's Lake, near St. Stephen, *Vroom*, Herb.; Pointe de Bute, Westmorland, *A. I. Trueman*.

LXXXI. JUNCACEÆ.

323. JUNCUS, L. - - - RUSH. BOG-RUSH.

- 663 J. effusus, L. Abundant in marshy ground.  
var. conglomeratus, Gray. Less common. Fredericton and elsewhere.
- 664 J. filiformis, L. Richibucto, Kouchibouguac, *Fowler*; Woodstock, *Hay*, Herb.; Salmon River, *Wetmore*.
- 665 J. Balticus, Dethard. Common on the coast of Kent.
- 666 J. Stygius, L. Peat bogs at Richibucto and Point Esequinac, *Fowler*, Herb.; Andover and Salmon River, *Wetmore*; near St. John, *Hay*.
- 667 J. bufonius, L. Very common throughout. *Hay*, Herb.
- 668 J. Gerardii, Loisel. Salt marshes at Kouchibouguasis, *Fowler*; St. John, *Hay*, Herb.
- 669 J. tenuis, Willd. Common. Hopewell Cape, *Hay*, Herb.; Andover, *Wetmore*.  
var. secundus, Gray. Bass River, *Fowler*; Salmon River, *Wetmore*.
- 670 J. Greenii, Oakes & Tuckerm. Wet sandy places, Kouchibouguasis, Kent Co., *Fowler*, Herb.
- 671 J. pelocarpus, E. Meyer. Bocabec, *Wetmore*; Quaco, *Brittain*.
- 672 J. articulatus, L. Hampton, Petitcodiac, Baie Verte, *Brittain*; Clifton, *Wetmore*.
- 673 J. nodosus, L. Restigouche, *Fowler*; Campbellton, Herb.; Andover and Salmon River, *Wetmore*; Green River, Upper St. John, *Hay*.
- 674 J. Canadensis, J. Gay, var. longicaudatus, Engelm. Common in Kent.  
var. coarctatus, Engelm. Rather common in Kent, *Fowler*; Bocabec and Chipman, *Wetmore*.

324. LUZULA, DC. - - - WOOD-RUSH.

- 675 L. pilosa, Willd. Common in old fields.
- 676 L. parviflora, Desv., var. melanocarpa, Gray. Upper Gaspeaux and Blissville, Perth, Victoria Co., *Wetmore*.
- 677 L. campestris, DC. Dry fields. Common.

LXXXII. TYPHACEÆ.

325. TYPHA, Tourn. - - - CAT-TAIL. FLAG.  
 678 T. latifolia, L. Common in wet muddy places throughout.
326. SPARGANIUM, Tourn. - - - BUR-REED.  
 679 S. simplex, Hudson. In wet places and borders of lakes. St. John Co., *Hay*, Herb.  
 var. Nuttallii, Engelm. In water, Bass River, *Fowler*; Welsford, *Hay*, Herb.  
 var. androcladum, Engelm. Norton, *Hay*, Herb.  
 var. angustifolium, Engelm. Salmon River, *Hay*, *Wetmore* Herb.; Kennebecasis, Bass River, *Fowler*.  
 680 S. minimum, Bauhin. Campbellton, *Chalmers*.

LXXXIII. ARACEÆ.

327. ARISÆMA, Martius. - - - INDIAN TURNIP.  
 681 A. triphyllum, Torr. Common. Bass River, Woodstock, *Fowler*; St. John and King's Co.'s, *Hay*, Herb.
328. CALLA, L. - - - CALLA. WATER ARUM.  
 682 C. palustris, L. In cold muddy places. Grand Falls, St. Francis River and Quispamsis, *Hay*; in Herb. *Mrs. Heustis*; Bulletin II. 32; Andover, Chipman, Clifton, *Wetmore*; Fredericton, Bathurst road N. of Miramichi, *Fowler*.
329. SYMPLOCARPUS, Salisb. - - - SKUNK-CABBAGE.  
 683 S. fetidus, Salisb. Lake Utopia, *Vroom*, Herb.; Mr. G. F. Matthew reports it at Milkish, King's Co., and Dr. Duncan at Nigadoo River, Gloucester Co. "Near Episcopal Church, Lower Hammond River," *Brittain*.
330. ACORUS, L. - - - SWEET-FLAG. CALAMUS.  
 684 A. Calamus, L. Common on borders of lakes and Konchibonguac, *Fowler*; Kennebecasis Cape, *Hay*.

LXXXIV. LEMNACEÆ.

331. LEMNA, L. - - - - - DUCKWEED.  
 685 L. trisulca, L. Petitcodiac, *Brittain*.  
 686 L. minor, L. Petitcodiac, *Brittain*.  
 687 L. polyrrhiza, L. Sussex, *Brittain*.

*Pre*  
 332. A  
 688 A. Plan  
 pl  
 He  
 333. SA  
 689 S. varia  
 var  
 690 S. calyci  
 of  
 Fo  
 691 S. gramin  
 near  
 St.  
 334. TR  
 692 T. palustr  
 Hay  
 693 T. maritim  
 Fou  
 335. SCH  
 694 S. palustr  
 Fou  
 Vroo  
 336. POT  
 695 P. natans,  
 706 P. Clayton  
 Salm  
 697 P. Spirillus  
 Fou  
 698 P. hybridu  
 699 P. rufescen  
 700 P. lonchite  
 Maco  
 701 P. mine  
 Fou  
 702 P. melong  
 Hay.

LXXXV. ALISMACEÆ.

332. ALISMA, L. - - - WATER-PLANTAIN.

688 A. Plantago, L., var. Americanum, Gray. Common in wet places, Kent, *Fowler*; Campbellton and St. John, *Hay*, Herb.

333. SAGITTARIA, L. - - - ARROWHEAD.

689 S. variabilis, Engelm. Several forms or vars. of this extremely variable species occur. Common in water or soft mud.

690 S. calycina, Engelm., var. spongiosa, Engelm. Near the head of the tide in the Richibucto River, and at Rothesay, *Fowler*, Herb.; Tobique River, *Hay*.

691 S. graminea, Michx. In water, Rothesay, and in a small lake near Richibucto, *Fowler*, Herb.; Grand Lake and Upper St. John, *Hay*; Clifton, *Wetmore*.

LXXXVI. NAIADACEÆ.

334. TRIGLOCHIN, L. - - - ARROW-GRASS.

692 T. palustre, L. Rather rare. Belledune, *Fowler*; Carleton, *Hay*, Herb.; Andover, Tobique River, *Wetmore*.

693 T. maritimum, L. Common in salt marshes along the coast, *Fowler*; Carleton, *Hay*, Herb.

335. SCHEUCHZERIA, L.

694 S. palustris, L. Soft peat bogs. Richibucto, Fredericton, *Fowler*; Tay's Mills, York Co., *Moser*; St. Stephen, *Vroom*; McAdam Junction, *Hay*.

336. POTAMOGETON, Tourn. - - - PONDWEED.

695 P. natans, L. In slow flowing water, Salmon River, Kent Co.

696 P. Claytonii, Tuckerman. Rather common. Hampton and Salmon River, *Fowler*; Norton, *Hay*, Herb.

697 P. Spirillus, Tuckerman. In the Kennebecasis at Norton, *Fowler*; Lake Utopia and Salmon River, *Wetmore*.

698 P. hybridus, Michx. St. James and St. Stephen, *Vroom*.

699 P. rufescens, Schrader. St. Stephen, *Vroom*.

700 P. lonchites, Tuckerman. Tobique Lakes, *Hay*. *Fide* Prof. Macoun.

701 P. . . . . mineus, L. In flowing water at Coal Branch, Kent Co., *Fowler*; Tobique River, *Hay*; Salmon River, *Wetmore*.

702 P. . . . . nelongus, Wulfen. Bass River, Kent Co.; Tobique Lake, *Hay*.

- 703 *P. perfoliatus*, L. Ponds and slow streams, Norton, *Hay*, Herb.  
 704 *P. compressus*, L. Still and slow flowing water, St. John.  
 705 *P. obtusifolius*, Mertens and Koch. Very rare. Little Roher, *Brittain*.  
 706 *P. pauciflorus*, Pursh. Restigouche. The specimens are without fruit and therefore doubtful.  
 707 *P. pusillus*, L. Little Roher, *Brittain*.  
 var. *major*, Fries. St. Stephen, *Vroom*.  
 708 *P. pectinatus*, L. Harris Cove, *Matthew*; Norton, *Fowler*.  
 709 *P. Robbinsii*, Oakes. Petitecodiac and Hampton, *Brittain*, Herb.; Tobique Lakes, *Hay*.

337. RUPPIA, L. - - - - DITCH-GRASS.

- 710 *R. maritima*, L. Growing under water in estuaries of rivers flowing into the Gulf.

338. ZANNICHELLIA, Micheli. - HORNED PONDWEED.

- 711 *Z. palustris*, L. Growing under water in streams rendered brackish by the tides. Richibucto, *Fowler*; Spurr's Cove, *Fowler*, *Hay*, Herb.

339. ZOSTERA, L. - EEL GRASS. GRASS-WRACK.

- 712 *Z. marina*, L. Growing under water in shallow bogs along the Gulf coast.

340. NAIAS, L.

- 713 *N. flexilis*, Rostk. Potter's Lake, St. Stephen, *Vroom*.

LXXXVII. ERIOCAULONACEÆ.

341. ERIOCAULON, L. - - - - PIPEWORT.

- 714 *E. septangulare*, With. Lily Lake, *Fowler*; Dark Lake, *Hay*, Herb.; Welsford, Herb. *Mrs. Heustis*; St. Stephen, *Vroom*.

LXXXVIII. CYPERACEÆ.

342. CYPERUS, L. - - - - GALINGALE.

- 715 *C. diandrus*, Torr. Fredericton, *Wm. Massie*.  
 716 *C. phymatodes*, Muhl. Sandy bank of Kennebecasis, Norton, Fredericton, *Fowler*, *Vroom*.

*Pr*  
 343. I  
 717 D. spa  
 ton  
 344. I  
 718 H. Rol  
 S  
 719 H. obtu  
 720 H. palu  
 gr  
 721 H. tenu  
 T  
 722 H. acie  
 F  
 723 H. pygn  
 345. SC  
 724 S. caespit  
 725 S. Clint  
 rick  
 726 S. subter  
 727 S. punge  
 728 S. validu  
 729 S. mariti  
 730 S. microc  
 ton,  
 731 S. atrovir  
 eriet  
 732 S. rufus,  
 Rive  
 3. *Eriop*  
 346. ERI  
 733 E. alpinu  
 Fow  
 hillsi  
 734 E. vaginat  
 Herb  
 735 E. russolu  
 Port  
 man,  
 736 E. Virginic  
 Fowl

343. DULICHIMUM, Richard.

- 717 *D. spathaceum*, Pers. Very wet places. Kent, *Fowler*; Norton, *Hay*, Herb.

344. HELEOCHARIS, R. Brown. - SPIKE-RUSH.

- 718 *H. Robbinsii*, Oakes. Kendrick's Lake and Potter's Lake near St. Stephen, *Vroom*, Herb.  
 719 *H. obtusa*, Schultes. Muddy places. Common.  
 720 *H. palustris*, R. Br. Common, both the large form, which grows in water, and the smaller form in wet grassy places.  
 721 *H. tenuis*, Schultes. On a wet bank, Kouchibouguac, *Fowler*; Tobique Lakes, *Hay*; Petitecodiac and Hampton, *Brittain*.  
 722 *H. acicularis*, R. Br. Muddy shores and ditches, common, *Fowler*; Spurr's Cove, *Hay*, Herb.  
 723 *H. pygmaea*, Torr. Brackish marshes and shores, Kent Co.

345. SCIRPUS, L. - - - BULRUSH. CLUBRUSH.

- 724 *S. caespitosus*, L. Richibucto, *Fowler*; Lily Lake, *Hay*, Herb.  
 725 *S. Clintonii*, Gray. Madawaska, *Hay*; Digdeguash, St. Patrick, *Vroom* Herb.  
 726 *S. subterminalis*, Torr. Petitecodiac, Quaco, *Brittain*, Herb.  
 727 *S. pungens*, Vahl. Common on salt or brackish shores.  
 728 *S. validus*, Vahl. In still fresh water. Common.  
 729 *S. maritimus*, L. Salt marshes. Common.  
 730 *S. microcarpus*, Presl. Common. Kent, *Fowler*; Campbellton, *Hay*, Herb.  
 731 *S. atrovirens*, Muhl. Wet meadows and bogs. Norton, *Fredricton*, *Fowler*; Grand Manan, *Hay*, Herb.  
 732 *S. rufus*, (*Blysmus rufus*, L.) Marshy ground at mouth of Eel River, Restigouche Co., Herb.

3. *Eriophorum* Common  
 346. ERIOPHORUM, L. - - - COTTON-GRASS.

- 733 *E. alpinum*, L. Grand Falls of Nepisiquit and near St. John, *Fowler*; St. Francis and Lily Lake, *Hay*, Herb.; shaded hillside at Andover, *Wetmore*.  
 734 *E. vaginatum*, L. Common in bogs. Kent, Carleton, *Fowler*, Herb.; Lancaster, *Mrs. Heustis*.  
 735 *E. russeolum*, Fries. Bog near Richibucto, *Fowler*; Cape Bald, Port Elgin, Hillsborough, Cape Enrage, *Brittain*; Chipman, *Wetmore*.  
 736 *E. Virginicum*, L. Common in bogs in northern counties, *Fowler*; Lily Lake, *Hay*, Herb.



- 737 *E. polystachyon*, L. Common throughout the Province.  
 738 *E. gracile*, Koch. Rather common. Bass River, *Fowler*; Lancaster, *Hay*, Herb.

347. RHYNCHOSPORA, Vahl. - - - BEAK-RUSH.

- 739 *R. fusca*, Roem & Schultes. Near Hampton, *Brittain*, Herb.  
 740 *R. alba*, Vahl. Peat bogs. Near Richibucto, *Fowler*; border of Clifton Lake, *Wetmore*.

348. CAREX, L. - - - - - SEDGE.

- 741 *C. gynocrates*, Wormskiold. Restigouche, *Chalmers*; Arthur-ette, *Wetmore*.  
 742 *C. pauciflora*, Lightfoot. Bog near St. John, *Fowler*; mouth of Madawaska, *Hay*, Herb.; Chipman, *Wetmore*.  
 743 *C. polytrichoides*, Muhl. Rather common. Bass River, *Fowler*; Spurr's Cove, *Hay*, Herb.  
 744 *C. bromoides*, Schk. Petitecodiac, Pollet River and Portage, *Brittain*; Arthurette and Salmon River, *Wetmore*.  
 745 *C. teretiuscula*, Good. Swamps. Kouchibouguac, *Fowler*; Salmon River, *Wetmore*.  
 746 *C. vulpinoidea*, Michx. Near St. John, *Matthew*.  
 747 *C. stipata*, Muhl. Common. Bass River, *Fowler*; Norton, *Hay*, Herb.  
 748 *C. rosea*, Schk. Petitecodiac and Portage, *Brittain*.  
 749 *C. areta*, Boott. Petitecodiac and Hampton, *Brittain*. Determined by Prof. Macoun.  
 750 *C. tenella*, Schk. Damp shady grounds, Bass River.  
 751 *C. trisperma*, Dew. Swamps and woods. Bass River, *Fowler*; Carleton, *Hay*, Herb.  
 752 *C. tenuiflora*, Wahl. Tobique River, *Hay*; Petitecodiac, *Brittain*.  
 753 *C. canescens*, L. Common. Bass River, *Fowler*; Lily Lake, *Hay*, Herb.  
     var. *vitis*, Gray. Common. Bass River, *Fowler*; Carleton, *Hay*, Herb.; rather common at Salmon River, *Wetmore*.  
 754 *C. Norvegica*, Schk. Marshy ground, Shediac, *Brittain*. Determined by Prof. Macoun.  
 755 *C. Deweyana*, Schw. Bass River, *Fowler*; Petitecodiac, *Brittain*, Herb.; Gaspereaux River, Salmon River, *Wetmore*; Aroostook Falls, *Hay*.  
 756 *C. sterilis*, Willd. Petitecodiac, *Brittain*. Determined by Prof. Macoun.

*C. spilis*, Dew. Front Lake, *Brittain*

- 757 *C. ste*  
 var  
 var  
 758 *C. scop*  
 C  
 var.  
 759 *C. lago*  
 at  
 var.  
 760 *C. crist*  
 761 *C. adus*  
 qu  
 Pe  
 Ca  
 id  
 th  
 Ke  
 762 *C. fœne*  
 Sa  
 He  
 763 *C. stram*  
 ter,  
 tion  
 var. t  
 var. f  
 deg  
 764 *C. vulgan*  
 765 *C. aquati*  
 766 *C. torta*,  
 Peti  
 767 *C. aperta*  
 Saln  
 768 *C. stricta*,  
*Hay*  
 var. str  
 769 *C. lenticu*  
 Saln  
 770 *C. salina*,  
 foun  
 771 *C. maritim*  
 caste  
 772 *C. crinita*,  
 boug

- 757 *C. stellulata*, L. *Petitecodiac, Brittain.*  
var. *scirpoides*, Gray. Common in Kent, *Fowler*; Carleton, *Hay*, Herb.; *Petitecodiac, Brittain.*  
var. *angustata*, Gray. Wet ground, Bass River.
- 758 *C. scoparia*, Schk. Very common. Bass River, *Fowler*; Campbellton, Herb.  
var. *minor*, Boot. Sent from Restigouche by *Chalmers.*
- 759 *C. lagopodioides*, Schk. Bass River, *Fowler*, Herb.; not rare at Salmon River, *Wetmore.*  
var. *moniliformis*, Boot. Bass River.
- 760 *C. cristata*, Schw. Tobique River, *Hay.*
- 761 *C. adusta*, Boot. Richibucto River, Bass River, *Fowler*; Nepisiquit Lakes and Lower Tobique, *Hay* (the var. *glomerata*); *Petitecodiac, Brittain*, Herb. There are two forms of this *Carex* as determined by Col. S. Olney, one of which he identifies as *C. abolutescens*, Schw., var. *glomerata*, Olney, the other as var. *sparsiflora*, Olney. Both are found in Kent Co.
- 762 *C. fœnea*, Willd., var. *sabulonum*, Gray. (*C. silicea*, Olney.) Sand beaches on the coast. Kouchibouguac, *Fowler*, Herb.
- 763 *C. straminea*, Schk., var. *typica*, Gray. Kouchibougnasis, *Fowler*, Herb.; McAdam Junction, *Hay*; Fredericton Junction, *Fowler.*  
var. *tenera*, Gray. Kent Co. Rather rare.  
var. *festucacea*, Gray. St. John, *Hay, Fowler*, Herb.; Digdeguash, *Hay.*
- 764 *C. vulgaris*, Fries. Bass River, Carleton, *Fowler*, Herb.
- 765 *C. aquatilis*, Wahl. Kent Co., St. John Co., Harris Cove.
- 766 *C. torta*, Boot. Salmon Creek and Gaspereaux River, *Wetmore*; *Petitecodiac, Brittain.*
- 767 *C. aperta*, Boot. Near Richibucto, *Fowler*; rather common at Salmon River, *Wetmore.*
- 768 *C. stricta*, Lam. Richibucto, Fredericton, *Fowler*; Norton, *Hay*, Herb.; Salmon River, *Wetmore.*  
var. *strictior*, Gray. Tobique and Salmon Rivers, *Wetmore.*
- 769 *C. lenticularis*, Michx. Bass River, *Fowler*, Herb.; not rare at Salmon River, *Wetmore*; St. Stephen, *Vroom.*
- 770 *C. salina*, Wahl. Salt marsh at Molus River, Kent Co. Only found it once.
- 771 *C. maritima*, Vahl. Salt marshes, Molus River, *Fowler*, *ester, Hay*, Herb.
- 772 *C. crinita*, Lam. Along rills and brooks. Common. Kouchibouguac, *Fowler*; Norton, *Hay*, Herb.

- 773 *C. gynandra*, Schw. Tobique River, *Hay* and *Chalmers*.  
 774 *C. limosa*, L. Peat bogs, Richibucto, Bass River, *Fowler*,  
 Herb.  
 775 *C. irrigua*, Smith. Peat bogs, Kent Co., *Fowler*; Lily Lake,  
*Hay*, Herb.  
 776 *C. Buxbaumii*, Wahl. Restigouche near mouth of Upsalquitch,  
*Fowler*; Lily Lake, *Hay*, Herb.  
 777 *C. atrata*, L. Madawaska River, *Hay*; Tobique, *Wetmore*.  
 778 *C. aurea*, Nutt. Near St. John, *Fowler*; Kennebecasis Island,  
*Hay*, Herb.; Andover and Minister's Face, *Wetmore*.  
 779 *C. panicea*, L. Wet meadows, Bass River.  
 780 *C. granularis*, Muhl. Wet grounds, Bass River, *Fowler*; Col-  
 lege grounds, Fredericton, *Wetmore*; Sussex, *Brittain*.  
 781 *C. pallescens*, L., var. *undulata*, Gray. Bass River, *Fowler*;  
 Aroostook Falls, Carleton, *Hay*, Herb.  
 782 *C. gracillima*, Schw. Bass River, *Fowler*; Tobique, *Hay*.  
 783 *C. laxiflora*, Lam. Several vars. and forms of this exceedingly  
 variable plant are found, but they have not been worked  
 out. More material is required.  
 784 *C. oligocarpa*, Schk. Bellisle and Petiteodiac, *Brittain*.  
 785 *C. pedunculata*, Muhl. Petiteodiac, Havelock, *Brittain*; Red  
 Bank and Salmon River, *Wetmore*; St. Stephen, *Vroom*;  
 Nashwaaksis, *Moser*.  
 786 *C. umbellata*, Schk. Rocky ground near the Manse at Black-  
 ville, *Fowler*; Red Bank, *Wetmore*; Petiteodiac, *Brittain*.  
 787 *C. Novæ-Angliæ*, Schw. St. John, *Fowler*, *Hay*, Herb.;  
 Petiteodiac, *Brittain*; Chipman, *Wetmore*.  
 788 *C. Emmonsii*, Dew. Dry bank near Manse, Blackville, *Fowler*;  
 Petiteodiac, *Brittain*; Salmon River, *Wetmore*.  
 789 *C. Pennsylvania*, Lam. Dry knolls in woods between Richi-  
 bucto and Molus River, *Fowler*; not rare at Salmon River  
 on dry banks, *Wetmore*.  
 790 *C. varia*, Muhl. Dry knolls in woods, Bass River, Fredericton  
 Junction, *Fowler*; rather common at Salmon River, *Wet-  
 more*.  
 791 *C. pubescens*, Muhl. Petiteodiac, *Brittain*.  
 792 *C. scabrata*, Schw. Wet grounds, Bass River, *Fowler*; Norton,  
*Hay*; Campbellton, Herb.  
 793 *C. aretata*, Boot. Margin of dry woods beside Manse, Bass  
 River, *Fowler*, Herb.; rather common at Salmon River,  
*Wetmore*; St. John, *Hay*; various places in Westmorland,  
*Brittain*, Bulletin III. 36.  
 794 *C. debilis*, Michx. Bass River, Fredericton, *Fowler*; Carleton,  
*Hay*, Herb.; common at Salmon River, *Wetmore*.

- 795 *C. capill*  
 Ke  
 796 *C. flexili*  
 Bar  
 Pet  
 797 *C. flava*,  
 Bas  
 798 *C. Cæderi*  
 Her  
 799 *C. filifor*  
 Artl  
 800 *C. lanugin*  
 Herl  
 801 *C. Hough*  
 Co.,  
 802 *C. riparia*,  
 803 *C. Psendo*  
 ditch  
 and l  
 804 *C. hystrici*  
 Herb  
 805 *C. tentacul*  
 River  
 806 *C. intumes*  
 King  
 807 *C. lupulina*  
 808 *C. follicula*  
*Britto*  
 809 *C. rostrata*,  
 Herb.  
 810 *C. retrorsa*,  
 ler, H  
 811 *C. utriculat*  
*Fowler*  
 812 *C. Vaseyi*, I  
 813 *C. monile*, T  
*Fowler*  
 814 *C. Tuckerm*  
 815 *C. oligosper*  
 Herb.;  
 816 *C. miliaris*, I  
 side of  
 817 *C. longirostr*

- 795 *C. capillaris*, L. Bass River, *Fowler*; Edmundton, *Hay*, Herb.; Kennebecasis Bay, *Wetmore*.
- 796 *C. flexilis*, Rudge. Near Weldford Station, *Fowler*, Herb.; Red Bank Creek and Tobique River, *Wetmore*; common at Petitecodiac, *Brittain*.
- 797 *C. flava*, L. Common in damp meadows. St. John, *Matthew*; Bass River, *Fowler*, Herb.
- 798 *C. Oederi*, Ehrh. Rothesay, on shore, *Fowler*; Carleton, *Hay*, Herb.; Tobique, *Wetmore*.
- 799 *C. filiformis*, L. Lake Elsie near Richibucto, *Fowler*, Herb.; Arthurette, *Wetmore*.
- 800 *C. lanuginosa*, Michx. Moncton and Petitecodiac, *Brittain*, Herb.; Edmundton, *Hay*.
- 801 *C. Houghtonii*, Torr. Dry grassy places, Coal Branch, Kent Co., *Fowler*, Herb.; Tobique River at Pokiok, *Wetmore*.
- 802 *C. riparia*, Curtis. In water near Weldford Station.
- 803 *C. Pseudo-Cyperus*, L. Frequent along borders of lakes and in ditches in Kent Co., *Fowler*; Long Lake, St. John Co., and McAdam Junction, *Hay*.
- 804 *C. hystricina*, Willd. Lily Lake, *Fowler*; Welsford, *Hay*, Herb.
- 805 *C. tentaculata*, Muhl. Abundant along the shore near Bass River Bridge.
- 806 *C. intumescens*, Rudge. Rather common in Kent, *Fowler*; King's Co. and on St. John River, *Hay*, Herb.
- 807 *C. lupulina*, Muhl. Hampton and Norton, *Fowler*, *Hay*, Herb.
- 808 *C. folliculata*, L. Norton, *Fowler*, *Hay*, Herb.; St. Martin's, *Brittain*, Herb.
- 809 *C. rostrata*, Michx. Bog at Rothesay, *Fowler*; Lily Lake, *Hay*, Herb.; border of Clifton Lake, *Wetmore*.
- 810 *C. retrorsa*, Schw. Common in wet places at Bass River, *Fowler*, Herb.
- 811 *C. utriculata*, Boot. Swampy places, Bass River, Fredericton, *Fowler*; Norton, *Hay*, Herb.
- 812 *C. Vaseyi*, Dew. Borders of Lake Elsie near Richibucto.
- 813 *C. monile*, Tuck. Wet places at Bass River and Fredericton, *Fowler*; Salmon River, *Hay*.
- 814 *C. Tuckermani*, Boot. Wet bank of Bass River near Bridge.
- 815 *C. oligosperma*, Michx. In a peat bog near Richibucto, *Fowler*, Herb.; Madawaska, *Hay*.
- 816 *C. miliaris*, Michx. Wet shores at Rothesay and on opposite side of river, *Fowler*, Herb.
- 817 *C. longirostris*, Torr. Andover, *Wetmore*; Sussex, *Brittain*.

LXXXIX. GRAMINEÆ.

349. PANICUM, L. - - - PANIC-GRASS.
- 818 P. GLABRUM, Gaudin. Fredericton, on railway track, *Fowler*; Nashwaaksis, *Moser*; Hampton, *Brittain*, Herb.; Salmon River, *Wetmore*.
- 819 P. capillare, L. A weed in gardens and cultivated grounds, Bass River.
- 820 P. dichotomum, L. In dry fields and woods. Common in Kent.
350. OPLISMENUS, Beauv. - COCK-SPUR GRASS.
- 821 O. CRUS-GALLI, Kunth. (*Panicum Crus-galli*, L.) A very variable and troublesome weed about barnyards and gardens.
351. SETARIA, Beauv. - BRISTLY FOX-TAIL GRASS.
- 822 S. VERTICILLATA, Beauv. Reported by *Hay* on ballast, St. John.
- 823 S. GLAUCA, Beauv. A common weed in gardens and manured grounds, Bass River.
- 824 S. VIRIDIS, Beauv. Gardens and cultivated grounds, Bass River.
352. SPARTINA, Schreb. - CORD OR MARSH GRASS.
- 825 S. cynosuroides, Willd. Marshes, especially near the coast, Kent Co.
- 826 S. juncea, Willd. Salt marshes, Kouchibouguac, Richibucto.
- 827 S. striata, Roth., var. alterniflora, Gray. Salt marshes, Richibucto.
353. ZIZANIA, Gronov. - WATER OR INDIAN-RICE.
- 828 Z. aquatica, L. Abundant in water at Hampton and other places in King's Co., *Brittain*; not rare at Salmon River, *Wetmore*.
354. LEERSIA, Solander. - - RICE CUT-GRASS.
- 829 L. oryzoides, Swartz. Wet banks of streams, Bass River.
355. ANDROPOGON, L. - - - BEARD-GRASS.
- 830 A. scoparius, Michx. Goat Island in Grand Lake.
356. PHALARIS, L. - - - CANARY-GRASS.
- 831 P. CANARIENSIS, L. Spreading from ballast at St. John.  
*P. arundinacea, L. accidentally omitted*

357. AN?
- 832 A. ODORAT  
River
358. HIE
- 833 H. borealis  
elsew
359. ALO
- 834 A. genicula
- 835 A. aristulat
360. STIP
- 836 S. Richards
361. ORY
- 837 O. asperifol  
*Fowler*  
in blud
362. MILI
- 838 M. effusum,
363. MUE
- 839 M. glomerat  
easis.
- 840 M. Mexican  
*tain*, H
- 841 M. sylvatica.  
*Fowler*
364. BRAC
- 842 B. aristatum
365. PHILE
- 843 P. PRATENSE
366. AGRO
- 844 A. scabra, W
- 845 A. canina, L.
- 846 A. vulgaris, L
- 847 A. alba, L.

357. ANTHOXANTHUM, L. - SWEET VERNAL-GRASS.
- 832 A. ODORATUM, L. Common in grass fields and pastures. Bass River.
358. HIEROCHLOE, Gmelin. - - HOLY-GRASS.
- 833 H. borealis, Roem & Schultes. Molus River, Richibucto and elsewhere in Kent Co.
359. ALOPECURUS, L. - - FOXTAIL-GRASS.
- 834 A. geniculatus, L. Wet places. Carleton.
- 835 A. aristulatus, Michx. Wet places. Bass River.
360. STIPA, L. - - - FEATHER-GRASS.
- 836 S. Richardsonii, Link. Petitecodiac, *Brittain*.
361. ORYZOPSIS, Michx. - - MOUNTAIN RICE.
- 837 O. asperifolia, Michx. Fredericton Junction and Port Elgin, *Fowler*; Petitecodiac, *Brittain*; common at Salmon River in blueberry barrens, *Wetmore*.
362. MILIUM, L. - - - MILLET-GRASS.
- 838 M. effusum, L. Richmond, Carleton Co., *Vroom*.
363. MUEHLENBERGIA, Schreb. DROP-SEED GRASS.
- 839 M. glomerata, Trin. Weldford, Kent Co., banks of Kennebecasis.
- 840 M. Mexicana, Trin. Fredericton, *Fowler*; Petitecodiac, *Brittain*, Herb.
- 841 M. sylvatica, Torr. & Gr. Low rocky places, Fredericton, *Fowler*; Bellisle, King's Co., *Brittain*.
364. BRACHYELETTRUM, Beauv.
- 842 B. aristatum, Beauv. Rocky woods, Molus River, Kent Co.
365. PHELEUM, L. - TIMOTHY. HERD'S-GRASS.
- 843 P. PRATENSE, L. Cultivated for hay.
366. AGROSTIS, L. - - - BENT-GRASS.
- 844 A. scabra, Willd. Common throughout.
- 845 A. canina, L. Molus River, Kent Co., in dry barrens.
- 846 A. vulgaris, L. Abundant in old or dry fields.
- 847 A. alba, L. In damp grassy ground, Bass River.

367. CINNA, L. - - - WOOD REED-GRASS.
- 848 C. arundinacea, L., var. pendula, Gray. In deep shady places, Molus River, Bass River.
368. DEYEUXIA, Clarion. - REED BENT-GRASS.
- 849 D. Canadensis, (Calamagrostis Canadensis, Beauv.) The most abundant grass in wild meadows.
- 850 D. stricta, (Calamagrostis stricta, Trin.) Shediac, *Brittain*.
369. AMMOPHILA, Host. - - SEA SAND-REED.
- 851 A. arenaria, Host. (Calamagrostis arenaria, Roth.) St. John, *Hay*; Kouchibouguac, *Fowler*.
370. DESCHAMPSIA, Beauv. - - HAIR-GRASS.
- 852 D. flexuosa (Aira flexuosa, L.) On rocks near the mouth of the Kennebecasis.
- 853 D. caespitosa (Aira caespitosa, L.) Kennebecasis, Tabusintac on the Bathurst road, Restigouche.
371. TRISETUM, Persoon.
- 854 T. subspicatum, Beauv., var. molle, Gray. On rocky banks, Restigouche. *Fowler*; Upper Gaspercaux, *Wetmore*; Upper St. John, *Hay*.
372. AVENA, L. - - - - - OAT.
- 855 A. striata, Michx. Bass River, Tabusintac on Bathurst road, *Fowler*; Upper St. John, *Hay*; Petitcodiac, *Brittain*, Bulletin II. 32.
373. DANTHONIA, DC. - - WILD OAT-GRASS.
- 856 D. spicata, Beauv. Dry barren commons. Bass River.
374. PHRAGMITES, Trin. - - - - REED.
- 857 P. communis, Trin. Restigouche, *Chalmers*; St. Stephen *Vroom*; Sackville, Herb. *Mrs. Heustis*.
375. EATONIA, Raf.
- 858 E. Pennsylvanica, Gray. Scarce. Restigouche, Kennebecasis.
376. DACTYLIS, L. - - - ORCHARD-GRASS.
- 859 D. GLOMERATA, L. Fields and yards. Bass River.

*Brizopyrum spicatum*, Hook. Shediac, *Brittain*

377. P  
860 P. annua  
gro  
861 P. comp  
Joh  
862 P. caesia,  
863 P. seroti  
*Fo*  
864 P. prater  
diac  
865 P. TRIVIA  
866 P. debilis
378. GR  
867 G. melico  
Herb  
379. GLY  
868 G. Canad  
869 G. clongat  
*more*  
870 G. obtusa,  
871 G. nervata  
St. J  
872 G. pallida,  
873 G. aquatica  
874 G. fluitans,  
875 G. maritim  
876 G. distans,
380. FES  
877 F. ovina, L  
*ler*; M  
878 F. ELATIO.  
879 F. nutans, V  
men.
381. BRO  
880 B. SECALIN  
881 B. RACEMOS  
882 B. ciliatus,  
River,

377. POA, L. - MEADOW-GRASS. SPEAR-GRASS.

- 860 P. annua, L. A troublesome weed in gardens and cultivated grounds.
- 861 P. compressa, L. Harvey, York Co., Fredericton Junction, St. John, *Fowler*; Bellisle, *Brittain*.
- 862 P. cæsia, Smith. Taborville, King's Co., *Brittain*.
- 863 P. serotina, Ehrh. Along brooks in damp fields, Bass River, *Fowler*; Hampton, *Brittain*.
- 864 P. pratensis, L. Bass River, *Fowler*; common about Petitecodiac, *Brittain*.
- 865 P. TRIVIALIS, L. Introduced in ballast at Richibucto.
- 866 P. debilis, Torr. Petitecodiac, *Brittain*.

378. GRAPHEPHORUM, Desv.

- 867 G. melicoides, Beauv. Petitecodiac and Titusville, *Brittain*, Herb.

379. GLYCERIA, R. Brown. - - - MANNA-GRASS.

- 868 G. Canadensis, Trin. Common in bogs and very wet places.
- 869 G. elongata, Trin. Bass River, *Fowler*; Salmon River, *Wetmore*.
- 870 G. obtusa, Trin. St. Stephen, *Vroom*.
- 871 G. nervata, Trin. In damp grounds and meadows, Bass River, St. John.
- 872 G. pallida, Trin. In water, Petitecodiac, *Brittain*.
- 873 G. aquatica, Smith. In water and very wet places, Bass River.
- 874 G. fluitans, R. Brown. In shallow water, Bass River; St. John.
- 875 G. maritima, Wahl. Frequent on sea coast of Kent.
- 876 G. distans, Wahl. Salt marshes, Bathurst, St. John.

380. FESTUCA, L. - - - FESCUE-GRASS.

- 877 F. ovina, L., var. duriuscula, Gray. Scarce. Richibucto, *Fowler*; Moneton and Shediac, *Brittain*.
- 878 F. ELATIOR, L., var. PRATENSIS, Gray. In fields, Fredericton.
- 879 F. nutans, Willd. Lower Norton, *Brittain*. Have no specimens.

381. BROMUS, L. - - - BROME-GRASS.

- 880 B. SECALINUS, L. Rare in wheat fields, Bass River.
- 881 B. RACEMOSUS, L. Among wheat, Bass River.
- 882 B. ciliatus, L. On intervalles, Bass River, *Fowler*; Salmon River, *Wetmore*.



382. LOLIUM, L. - - - DARNEL. RYE-GRASS.  
 883 L. PERENNE, L. Near railway depot, Carleton, *Hay*. No specimen.  
 884 L. TEMULENTUM, L. Near railway depot, Carleton, *Hay*. Almost the only noxious grass known. No specimen.  
 383. TRITICUM, L. - - - - - WHEAT.  
 885 T. repens, L. A very troublesome weed on sandy soil. Varies greatly, especially on the sea coast.  
 886 T. caninum, L. On intervalles, Coal Branch, Kent Co.  
 384. HORDEUM, L. - BARLEY. SQUIRREL-TAIL GRASS.  
 887 H. jubatum, L. Sandy soil along the Gulf shore.  
 385. ELYMUS, L. - LYME-GRASS. WILD-RYE.  
 888 E. Virginicus, L. On intervalles, Hampton, Coal Branch.  
 889 E. Canadensis, L. University Herb. Sussex and Petitcodiac, *Britain*; E. River, Carleton Co., *Hay*.  
 890 E. mollis, Trin. Sand beaches, Kouchibouguac, *Fowler*; Restigouche, *Chalmers*.  
 386. ASPRELLA, Willd. - BOTTLE-BRUSH GRASS.  
 891 A. Hystrix, Willd. (*Gymnostrichum Hystrix*, Schreb.) Eel River, Carleton Co., *Hay*.

CRYPTOGAMIA.

CLASS III.—ACROGENOUS CRYPTOGRAMS.

XC. EQUISETACEÆ.

387. EQUISETUM, L. - HORSETAIL. SCOURING RUSH.  
 892 E. arvense, L. Very common in damp soil.  
 893 E. pratense, Ehrh. Restigouche River, *Chalmers*.  
 894 E. sylvaticum, L. Very common throughout.  
 895 E. limosum, L. Rather common. Kent, *Fowler*; Tobique Lakes, Carleton, *Hay*, Herb.; Nepisiquit Lakes, *Bailey*, Can. Nat. 1864, p. 90.

- 896 E. hyema  
Vict  
 897 E. scirpoi  
Le N  
 388. POI  
 898 P. vulgare  
the n  
River  
 389. ADI  
 899 A. pedatur  
Kesw  
II. 3  
Daley  
 390 PTEI  
 900 P. aquilina,  
 391. PELL  
 901 P. gracilis,  
Morris  
Wood  
 392. ASPI  
 902 A. viride, H  
ter Co  
*Fowler*  
Herb.  
 903 A. thelypter  
*Fowler*  
toria C  
 904 A. Filix-fœm  
 393. SCOL  
 905 S. vulgare, s  
Herb.  
fax, Bu  
 394. PHEG  
 906 P. polypodio  
Herb.

- 896 E. hyemale, L. Rather rare. Bass River, *Fowler*; Drummond, Victoria Co., *Hay*.  
897 E. scirpoides, Michx. Common about River Charlo and Point Le Nim, *Fowler*, Herb.

XCI. FILICES.

388. POLYPODIUM, L. - - - POLYPODY.  
898 P. vulgare, L. Common in clefts of rocks near St. John. In the northern counties I have only seen it at one spot at Bass River, *Fowler*; Island in Nictau Lake, *Hay*.  
389. ADIANTUM, L. - - - MAIDENHAIR.  
899 A. pedatum, L. Upper Restigouche and Upper St. John, Keswick Ridge, *Fowler*; Andover, *Hay*, Herb., Bulletin II. 30; Moose Mountain, Carleton Co., *Dr. Bailey*; Daley's Woods near Woodstock, *Hay*.  
390 PTERIS, L. - - - BRAKE OR BRACKEN.  
900 P. aquilina, L. Our most abundant Fern, everywhere.  
391. PELLÆA, Link. - - - CLIFF-BRAKE.  
901 P. gracilis, Hook. Cold damp clefts of densely shaded rocks. Morris Rock, Restigouche, Grand Falls, St. John, *Fowler*; Woodstock and Madawaska, *Hay*.  
392. ASPLENIUM, L. - - - SPLEENWORT.  
902 A. viride, Hudson. Clefts of rocks, Tattagouche Falls, Gloucester Co., Green Head near St. John, and Drury's Cove, *Fowler*; found at several stations about St. John, *Hay*, Herb.  
903 A. thelypteroides, Michx. Rich shady woods, Bass River, *Fowler*; Fredericton, *Vroom*, Herb.; Salmon River (Victoria Co.) and Woodstock, *Hay*.  
904 A. Filix-fœmina, Bernh. Very common throughout.  
393. SCOLOPENDRIUM, Smith. - HART'S TONGUE.  
905 S. vulgare, Smith. Near Woodstock, James Sutton, 1881, Herb. Presented to Herb. by Peter Jack, Esq, of Halifax, Bulletin II. 30.  
394. PHEGOPTERIS, Fec. - - - BEECH-FERN.  
906 P. polypodioides, Fec. Common throughout. Carleton, *Hay*, Herb.

907 P. *Dryopteris*, Fee. Common throughout. Carleton, *Hay*, Herb.

395. *ASPIDIUM*, Swartz. - SHIELD-FERN. WOOD-FERN.

908 A. *Thelypteris*, Swartz. In wet places, Bass River, *Fowler*; Green Head, Herb.

909 A. *Novaboracense*, Swartz. Rather common. Kouchibouguac, Bass River, *Fowler*; Lily Lake, *Hay*, Herb.

910 A. *fragans*, Swartz. Have only found it in clefts of rocks at the railway tunnel in Restigouche. Said to be found near Dalhousie.

911 A. *spinulosum*, Swartz, var. *intermedium*, Eaton. Our common form found everywhere.

var. *dilatatum*, Eaton. Not common. Bass River, *Fowler*; St. John, *Hay*, Herb.

912 A. *cristatum*, Swartz. Scarce. Bass River, Green Head, *Fowler*, *Hay*, Herb.; Andover and Upper Gaspereaux, *Wetmore*.

913 A. *Goldianum*, Hook. Near Woodstock. Presented to Herb. by Mr. Peter Jaek, Herb., Bulletin II. 31.

914 A. *Filix-mas*, Swartz. Keswick Ridge, *Moser*, *Hay*, Herb.; Daley's wood, Richmond, *Hay*.

915 A. *marginale*, Swartz. Rather common. Bass River, *Fowler*; Gondola Point, *Hay*, Herb.; St. Stephen, *Vroom*.

916 A. *aerostichoides*, Swartz. In the northern counties I have only noticed a single tuft near Molus River, Kent Co., *Fowler*; Upper Tobique, common near St. John, Kennebecasis, *Hay*, Herb.; Mosquito Cove, Herb. *Mrs. Heustis*; Andover, common at Salmon River, *Wetmore*.

917 A. *aculeatum*, Swartz, var. *Braunii*, Koch. Not rare. Sugar Loaf in Restigouche, Odell's Grove, Fredericton, *Fowler*, *Moser*, Herb.; St. Francis River, Andover and Salmon River, *Hay*, *Wetmore*, Bulletin II. 25; Campbellton, *Chalmers*, Herb.

396. *CYSTOPTERIS*, Bernhaldi. - BLADDER-FERN.

918 C. *bulbifera*, Bernh. Damp shaded ravines, Restigouche, St. John, *Fowler*; very abundant about Lower St. John, Coldbrook, *Hay*, Herb.

919 C. *fragilis*, Bernh. Rather common. Coal Branch, Kent Co., *Fowler*; Campbellton, Herb.; St. John and tributaries, *Hay*; Fredericton, *Vroom*.

397. ST

920 S. Germa  
*Fou*  
of S  
*Dr.*

398. ONO

921 O. sensibil  
comm  
Herb  
p. 83  
var. ob  
King

399. WOO

922 W. Ilvensis  
of Up  
Kesw  
*Hay*;  
casis,  
*Hay*.

923 W. hyperbo  
*Fowle*  
29, Ho  
given a  
copyin

400. DICK

924 D. punctilob  
and op

401. OSMU

925 O. regalis, L  
ton, *F*  
Herb.;  
*Bailey*.

926 O. Claytonia  
*Hay*, H

927 O. cinnamom  
countie  
var. frond  
step of  
to form  
fertile  
Kent C

397. STRUTHIOPTERIS, Willd. - OSTRICH-FERN.  
920 *S. Germanica*, Willd. Common in rich alluvial soil, Kent Co., *Fowler*; very abundant on low grounds of Tobique, mouth of St. Francis, *Hay*, Bulletin II. 25; on Tobique River, *Dr. Bailey*, Can. Nat. 1864, p. 83.
398. ONOCLEA, L. - - - SENSITIVE-FERN.  
921 *O. sensibilis*, L. Rather common in northern counties, *Fowler*; common on St. John and tributaries, Campbellton, *Hay*, Herb.; along Tobique River, *Dr. Bailey*, Can. Nat. 1864, p. 83, 85.  
var. *obtusilobata*, Torr. Richibucto, *Fowler*; Havelock, King's Co., *Brittain*.
399. WOODSIA, R. Brown. - - - WOODSIA.  
922 *W. Ilvensis*, R. Br. Restigouche on Sugar Loaf and at mouth of Upsalquitch, *Fowler*; St. Stephen, *Vroom*; found at Keswick, Nashwaaksis and near Green Head, St. John, *Hay*; in Herb. *Mrs. Heustis*; Minister's Face, Kennebecasis, Bulletin II. 29; very abundant about Lower Tobique, *Hay*.  
923 *W. hyperborea*, R. Br. Rare. At tunnel in Restigouche, *Fowler*; Aroostook Falls, *Hay* and *Wetmore*, Bulletin II. 29, Herb.; Grand Falls, *Peter Jack*. This fern was given as *W. glabella* in former list through a mistake in copying the label.
400. DICKSONIA, L'Her. - - - DICKSONIA.  
924 *D. punctilobula*, Kunze. Very common in pastures, roadsides and open woods.
401. OSMUNDA, L. - - - FLOWERING-FERN.  
925 *O. regalis*, L. Swamps and wet places. Bass River, Fredericton, *Fowler*; Upper Tobique and Campbellton, *Hay*, Herb.; St. John, Herb. *Mrs. Heustis*; Tobique, *Dr. Bailey*, Can. Nat. 1864, p. 83.  
926 *O. Claytoniana*, L. Very common throughout. Lancaster, *Hay*, Herb.  
927 *O. cinnamomea*, L. Very common in swamps in northern counties, *Fowler*; Campbellton, *Hay*, Herb.  
var. *frondosa*, Gray. Beautiful specimens showing every step of the change from the common sterile form of frond to forms having several of the upper pinnæ completely fertile were once found by the writer at Molus River, Kent Co.

402. BOTRYCHIUM, Swartz. - - - MOGWORT.

- 928 *B. lanceolatum*, Augstroem. Bass River near Manse, Fredericton, at Salamanca, *Fowler, Vroom*, Herb.; Kennebecasis, *Hay*.
- 929 *B. matricariæfolium*, A. Br. Petitecodiac, St. Martin's, *Brittain*, Herb. Reported from near Dalhousie.
- 930 *B. Virginicum*, Swartz. Rather common. Bass River, *Fowler*; Eel River, Victoria Co., *Hay*, Herb.; St. John, Herb. *Mrs. Teustis*; on dry rocky heights at the mouth of the Upsalquitch is a reduced form only a few inches high, *B. gracile*, Pursh.
- 931 *B. lunarioides*, Swartz. Rather common. Bass River, Miramichi, Fredericton.
- 932 *B. simplex*, Hitchcock. Is said to be found near Dalhousie, but the writer has not seen it.

403. OPHIOGLOSSUM, L. - - - ADDER'S-TONGUE.

- 933 *O. vulgatum*, L. Hopewell and Cape Enrage, *Brittain*, Herb.

XII. LYCOPODIACEÆ.

404. LYCOPODIUM.

- 934 *L. lucidulum*, Michx. Common in Kent, *Fowler*; Brookville, *Hay*, Herb.
- 935 *L. Selago*, L. Among grass on Carleton Heights, *Fowler*, Herb.
- 936 *L. inundatum*, L. Bass River and several places in Kent, *Fowler*, Herb.; not rare at Salmon River, *Wetmore*.
- 937 *L. annotinum*, L. In dry woods, common. *Fowler*, Herb.
- 938 *L. dendroideum*, Michx. Rather common. Bass River, *Fowler*, Herb.
- 939 *L. clavatum*, L. In dry woods, common. Bass River, *Fowler*, Herb.
- 940 *L. complanatum*, L. In dry woods. Common in Kent, *Fowler*; Campbellton, Herb.

405. SELAGINELLA, Beauv.

- 941 *S. rupestris*, Spreng. Keswick, *Burnett*, 1881. Herb.

406. ISOETES, L. - - - - - QUILLWORT.

- 942 *I. echinospora*, Durien, var. *Braunii*, Engelm. Rather common in Charlotte Co., *Vroom*.

e-  
s,  
n,

r;  
b.  
he  
B.

ra-  
but

erb.

ille,  
ler,

ent,

ler,

ler,

ler;

ion

