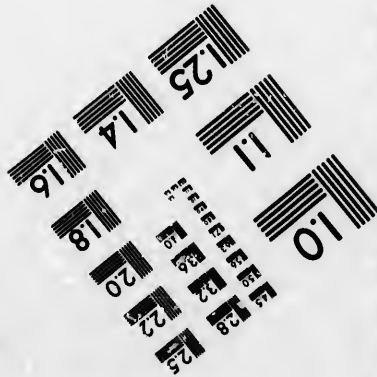
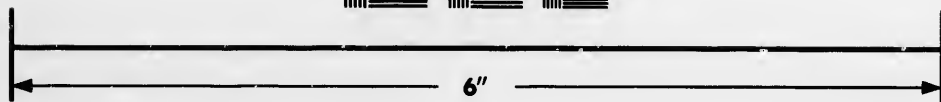
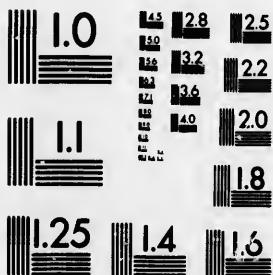


IMAGE EVALUATION
TEST TARGET (MT-3)



Photographic
Sciences
Corporation

23 WEST MAIN STREET
WEBSTER, N.Y. 14580
(716) 872-4503

18
20
22
25
28
32
36
40

**CIHM/ICMH
Microfiche
Series.**

**CIHM/ICMH
Collection de
microfiches.**



Canadian Institute for Historical Microreproductions / Institut canadien de microreproductions historiques

10
15
20
25
30
35
40

© 1987

Technical and Bibliographic Notes/Notes techniques et bibliographiques

The Institute has attempted to obtain the best original copy available for filming. Features of this copy which may be bibliographically unique, which may alter any of the images in the reproduction, or which may significantly change the usual method of filming, are checked below.

L'Institut a microfilmé le meilleur exemplaire qu'il lui a été possible de se procurer. Les détails de cet exemplaire qui sont peut-être uniques du point de vue bibliographique, qui peuvent modifier une image reproduite, ou qui peuvent exiger une modification dans la méthode normale de filmage sont indiqués ci-dessous.

- Coloured covers/
Couverture de couleur
- Covers damaged/
Couverture endommagée
- Covers restored and/or laminated/
Couverture restaurée et/ou pelliculée
- Cover title missing/
Le titre de couverture manque
- Coloured maps/
Cartes géographiques en couleur
- Coloured ink (i.e. other than blue or black)/
Encre de couleur (i.e. autre que bleue ou noire)
- Coloured plates and/or illustrations/
Planches et/ou illustrations en couleur
- Bound with other material/
Relié avec d'autres documents
- Tight binding may cause shadows or distortion
along interior margin/
La reliure serrée peut causer de l'ombre ou de la
distorsion le long de la marge intérieure
- Blank leaves added during restoration may
appear within the text. Whenever possible, these
have been omitted from filming/
Il se peut que certaines pages blanches ajoutées
lors d'une restauration apparaissent dans le texte,
mais, lorsque cela était possible, ces pages n'ont
pas été filmées.
- Additional comments:/
Commentaires supplémentaires:

- Coloured pages/
Pages de couleur
- Pages damaged/
Pages endommagées
- Pages restored and/or laminated/
Pages restaurées et/ou pelliculées
- Pages discoloured, stained or foxed/
Pages décolorées, tachetées ou piquées
- Pages detached/
Pages détachées
- Showthrough/
Transparence
- Quality of print varies/
Qualité inégale de l'impression
- Includes supplementary material/
Comprend du matériel supplémentaire
- Only edition available/
Seule édition disponible
- Pages wholly or partially obscured by errata
slips, tissues, etc., have been refilmed to
ensure the best possible image/
Les pages totalement ou partiellement
obscurcies par un feuillet d'errata, une pelure,
etc., ont été filmées à nouveau de façon à
obtenir la meilleure image possible.

[Printed ephemera] 1 sheet, [4] p.

This item is filmed at the reduction ratio checked below/
Ce document est filmé au taux de réduction indiqué ci-dessous.

10X	12X	14X	16X	18X	20X	22X	24X	26X	28X	30X	32X
						✓					

The copy filmed here has been reproduced thanks to the generosity of:

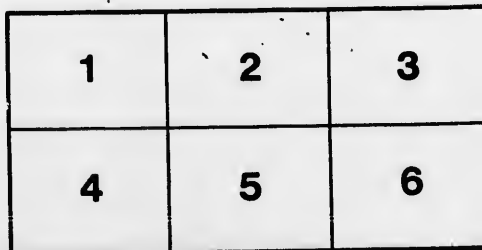
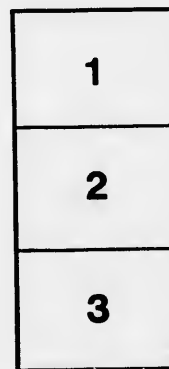
Metropolitan Toronto Library
Canadian History Department

The images appearing here are the best quality possible considering the condition and legibility of the original copy and in keeping with the filming contract specifications.

Original copies in printed paper covers are filmed beginning with the front cover and ending on the last page with a printed or illustrated impression, or the back cover when appropriate. All other original copies are filmed beginning on the first page with a printed or illustrated impression, and ending on the last page with a printed or illustrated impression.

The last recorded frame on each microfiche shall contain the symbol \rightarrow (meaning "CONTINUED"), or the symbol ∇ (meaning "END"), whichever applies.

Maps, plates, charts, etc., may be filmed at different reduction ratios. Those too large to be entirely included in one exposure are filmed beginning in the upper left hand corner, left to right and top to bottom, as many frames as required. The following diagrams illustrate the method:



L'exemplaire filmé fut reproduit grâce à la générosité de:

Metropolitan Toronto Library
Canadian History Department

Les images suivantes ont été reproduites avec le plus grand soin, compte tenu de la condition et de la netteté de l'exemplaire filmé, et en conformité avec les conditions du contrat de filmage.

Les exemplaires originaux dont la couverture en papier est imprimée sont filmés en commençant par le premier plat et en terminant soit par la dernière page qui comporte une empreinte d'impression ou d'illustration, soit par le second plat, selon le cas. Tous les autres exemplaires originaux sont filmés en commençant par la première page qui comporte une empreinte d'impression ou d'illustration et en terminant par la dernière page qui comporte une telle empreinte.

Un des symboles suivants apparaîtra sur la dernière image de chaque microfiche, selon le cas: le symbole \rightarrow signifie "A SUIVRE", le symbole ∇ signifie "FIN".

Les cartes, planches, tableaux, etc., peuvent être filmés à des taux de réduction différents. Lorsque le document est trop grand pour être reproduit en un seul cliché, il est filmé à partir de l'angle supérieur gauche, de gauche à droite, et de haut en bas, en prenant le nombre d'images nécessaire. Les diagrammes suivants illustrent la méthode.

rata

elure,
à

32X

1 Entry

1501

ST. PAUL'S INSTITUTE,

TARSUS, ASIA MINOR,

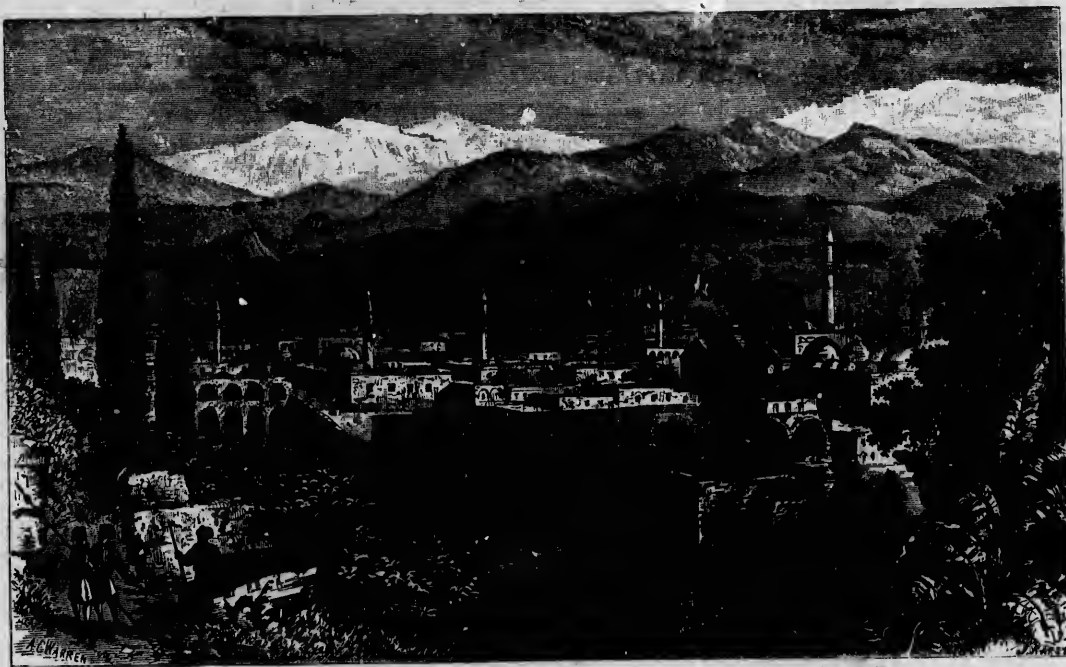
AN INSTITUTION FOR THE

TRAINING OF NATIVE PREACHERS AND TEACHERS.

FOR

EVANGELICAL CHRISTIAN WORK

THROUGHOUT THE TURKISH EMPIRE.



THE CITY OF TARSUS.

CANADIAN COMMITTEE.

HON. S. H. BLAKE, Q.C.
(Chairman).
JOHN MACDONALD.
ROBERT KILGOUR.
HENRY J. CLARKE.



GEORGE ANDERSON,
(Secretary-Treasurer).
W. H. HOWLAND.
HAMILTON CASSELS.
ELIAS ROGERS.

To those in Canada interested in Missionary Work.

Mr. Jenanyan, from the home of St. Paul, Tarsus, a no mean city of Cilicia, is in our midst. As a citizen of that city he comes to this continent asking aid in furthering the life-work of the Apostle of the Gentiles. We would have been disappointed had the people to the south of us not responded to the call.

Mr. Jenanyan, a convert to Christianity, bears to us the message that Light has again arisen in his native land, which is dispelling the darkness that for centuries has enshrouded it. He tells us of the earnest desire of his fellow citizens at Tarsus for more Light, and asks us to accept the honor of helping in this work.

He has graduated from Union Theological Seminary, New York, and has been appointed, along with Mr. Alexander McLachlan, of Toronto, a graduate from the same Seminary, to undertake the work of establishing a Christian Training School at Tarsus to train native teachers and preachers for Christian work among their fellow countrymen. The people there are too poor to do this for themselves.

The whole of the expense incurred in this country in connection with the establishment of the work has been undertaken by the Officers of the Board in the United States, whose names are a guarantee in every land. All the contributions will, therefore, be appropriated directly to the support of this institution in Tarsus. There is none such as the one proposed under the care of any Protestant mission throughout all Asia Minor.

The work is undenominational, and the Institution will be open to the deserving poor and orphans of both sexes.

The annual support of a student is \$50. It will not be difficult, therefore, for many individuals, congregations, Sabbath schools, Bible classes and other religious organizations to undertake the care of a pupil. On this being done, the name will be registered and information quarterly sent to those supporting as to the welfare and progress of the student.

We earnestly commend this work to your heartiest consideration. We desire, with God's blessing, that it may be made a great success. With no merely sentimental idea do we earnestly desire thus to keep alive the memory of the Apostle Paul.

We believe that the more the project is thought out, the more will it commend itself to those who are enjoying the blessings resulting from the life-work of a man so largely used by God, and who was faithful even unto death.

Information will be gladly given by either the Chairman or the Secretary.

Commending this work to your prayers, and to your kind Christian consideration,

Believe us in the work,

Faithfully yours,

GEO. ANDERSON, *Sec-Treas.*

S. H. BLAKE, *Chairman.*

26 EARL STREET, TORONTO.

BOARD OF TRUSTEES.

PRESIDENT.

REV. HOWARD CROSBY, D.D., LL.D., New York.

VICE-PRESIDENT.

COL. ELLIOTT F. SHEPARD, New York.

TREASURER.

WALTER T. HATCH, ESQ., 14 Nassau St., New York.

CORRESPONDING SECRETARY.

DANIEL W. McWILLIAMS, ESQ., Brooklyn, N.Y.

RECORDING SECRETARY.

LOUIS C. WHITON, ESQ., 115 Broadway, New York.

THE ADVISORY BOARD OF MANAGERS.

REV. CHARLES F. DEEMS, D.D., LL.D., - New York.

" JOHN HALL, D.D., LL.D., - - " "

" CYRUS HAMLIN, D.D., LL.D., Lexington, Mass.

" *ROSWELL D. HITCHCOCK, D.D. LL.D., New York.

" JAMES M. KING, D.D., - - - " "

" WILLIAM ORMISTON, D.D., LL.D., " "

" A. G. RULIFFSON, - - - " "

" R. S. STORRS, D.D., LL.D., Brooklyn, N.Y.

" WILLIAM M. TAYLOR, D.D., LL.D., New York.

CORNELIUS N. BLISS, ESQ., - - - " "

WILLIAM F. LEE, ESQ., - - - " "

FREDERICK MANVEL, ESQ., - Brooklyn, N.Y.

GUSTAVE SCHWAB, ESQ., - - - New York.

PROF. WILLIAM H. THOMSON, M.D., - - - " "

IRA E. THURBER, ESQ., - - - Brooklyn, N.Y.

JOHN H. WASHBURN, ESQ., - - - New York.

*Deceased.

275.64

1887. St. Paul's inst.

MEMORIAL

THE MEMORIAL OF THE
CITY OF NEW YORK
IN
HONOR OF
THE
MAYORS OF THE CITY OF NEW YORK
FROM 1785 TO 1887
BY
JOHN H. WATSON
NEW YORK
1887

