

**CIHM  
Microfiche  
Series  
(Monographs)**

**ICMH  
Collection de  
microfiches  
(monographies)**



**Canadian Institute for Historical Microreproductions / Institut canadien de microreproductions historiques**

**© 1998**



The copy filmed here has been reproduced thanks to the generosity of:

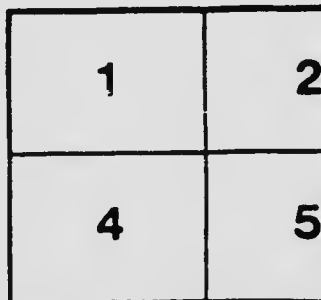
Vancouver City Archives

The images appearing here are the best quality possible considering the condition and legibility of the original copy and in keeping with the filming contract specifications.

Original copies in printed paper covers are filmed beginning with the front cover and ending on the last page with a printed or illustrated impression, or the back cover when appropriate. All other original copies are filmed beginning on the first page with a printed or illustrated impression, and ending on the last page with a printed or illustrated impression.

The last recorded frame on each microfiche shall contain the symbol  $\rightarrow$  (meaning "CONTINUED"), or the symbol  $\nabla$  (meaning "END"), whichever applies.

Maps, plates, charts, etc., may be filmed at different reduction ratios. Those too large to be entirely included in one exposure are filmed beginning in the upper left hand corner, left to right and top to bottom, as many frames as required. The following diagrams illustrate the method:



L'exemplaire filmé fut reproduit grâce à la générosité de:

Vancouver City Archives

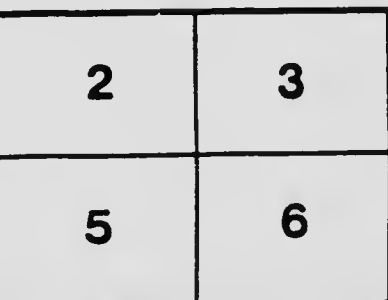
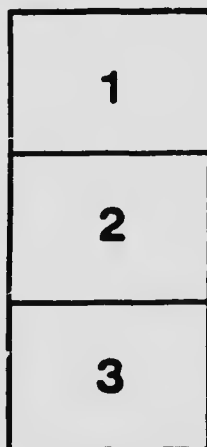
Les images suivantes ont été reproduites avec le plus grand soin, compte tenu de la condition et de la netteté de l'exemplaire filmé, et en conformité avec les conditions du contrat de filmage.

Les exemplaires originaux dont la couverture en papier est imprimée sont filmés en commençant par le premier plat et en terminant soit par la dernière page qui comporte une empreinte d'impression ou d'illustration, soit par le second plat, selon le cas. Tous les autres exemplaires originaux sont filmés en commençant par la première page qui comporte une empreinte d'impression ou d'illustration et en terminant par la dernière page qui comporte une telle empreinte.

Un des symboles suivants apparaît sur la dernière image de chaque microfiche, selon le cas: le symbole  $\rightarrow$  signifie "A SUIVRE", le symbole  $\nabla$  signifie "FIN".

Les cartes, planches, tableaux, etc., peuvent être filmés à des taux de réduction différents.

Lorsque le document est trop grand pour être reproduit en un seul cliché, il est filmé à partir de l'angle supérieur gauche, de gauche à droite, et de haut en bas, en prenant le nombre d'images nécessaire. Les diagrammes suivants illustrent la méthode.



And 153  
776

SECOND EDITION

"THE FUTURE IS OURS"

# North Vancouver

City and District Municipalities



THE CITY HALL

- A City of Rapid Growth
- An Ideal Sunny Slope for Homes
- The Purest Water From the Mountain Springs
- A Choice Sphere for the Fruit Grower and Florist
- The Investors Assured Hope
- The Tourists' Matchless Scenic Resort
- The Sportsman's and Angler's Paradise
- Unsurpassed Natural Facilities for Industries
- The Finest Harbor in the World
- Thousand Acres Ready for Docks
- The Coming Centre of Railway Enterprise
- All Improvements Exempt From Taxation
- Grand Boulevard, Third Largest in the World
- The United Wireless Station

## The Brightest Prospect in Canada

PUBLISHED BY AUTHORITY OF THE JOINT CIVIC COMMITTEE  
 CHAIRMAN, ALDERMAN G. W. McRAE  
 HON. SECRETARY, MR. ALEX. PHILIP, O.M.C.

# WHAT NORTH VANCOUVER HAS :

## FOR HOMES

A great area of sunny slopes sheltered from the north and east winds. Fertile soil for all kinds of fruit and vegetables. Sites large and small at moderate prices. Good roads and good water.

## FOR INDUSTRIES

What could be better than the banks of the Seymour, the Lynn, the Mosquito, the Mackay, the Capilano, the Sisters, and the Cypress Creeks. An immense wealth of the purest water entirely free from lime and alkali eminent-ly suited for woollen, cotton, pulp or paper mills.

## FOR LUMBERING

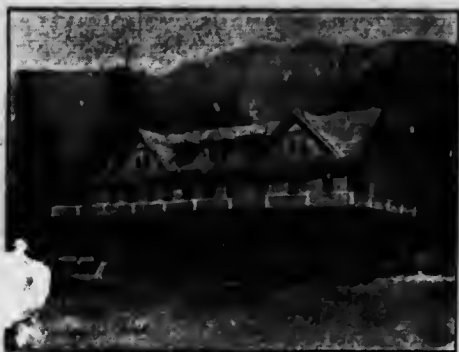
We still have the wealth of the upper valleys of the Seymour, the Lynn and the Capilano, estimated at more than 1,000,000,000 feet of the finest fir and cedar.

## FOR MINING

The Lynn Valley and the Seymour Valley Mines are proving specially rich in copper and will soon give employment to many workers.

## FOR WHARVES AND SHIPPING

About thirty miles of seaboard on the best natural harbor in the world, and about 1000 acres of tide flats ready for the construction of wharves, docks, elevators and warehouses; requiring only the energy and resources of a harbor board to bring them to abundant usefulness.



CANYON VIEW HOTEL

## FOR THE TOURIST

Many scenic points of great interest and beauty. Canyons on Seymour, Lynn, Capilano and Cypress Creeks, Grouse Mountain, (4250 feet), Mount Crown, (5200 feet), The Lions, (6500 feet), Goat Mountain (4500 feet) and others. Victoria Park, Alexandra Gardens, Queensbury Boulevard and Park, Lynn Valley Park Fell Park and Ottawa Gardens.

## NORTH VANCOUVER

Has nine Churches, seven Schools, two Banking Offices, fifteen Real Estate and Insurance Offices, seven Hotels, eight Restaurants, three Fish Canneries, six Saw Mills, three Wood Working Factories, one Steam Laundry, three Boat Building Yards and one Marine Railway, one Powder Mill, one Rock Breaking Plant, twenty-six Stores of different kinds, three Medical Doctors, one Dentist, five Architects (1 naval) two Printing Establishments, Horticultural Association and Farmers' Institute. Ten miles of Electric Tramway System soon to be extended, Electric Light and Telephone Systems.

North Vancouver has also a hearty welcome for every new settler and for every visitor

**THE FUTURE IS OURS**

# NORTH VANCOUVER

A CITY OF HOMES



THE EXHIBITION HALL

**I**N 1902 there was only the Moodyville School to accommodate thirty scholars. Now there are several public and private schools all well attended and well manned.

In 1902 there was only one Mission Station, now there are a number of strong congregations and mission stations.

In 1902 the only Friendly Society was the Independent Order of Foresters, now vigorous Lodges also exist of the Masonic Order, the Knights of Pythias, the Odd Fellows, the Eagles, the Orange Society, Sons of England, and St. Andrew's Caledonian Society.

In 1903 the Horticultural Association and Farmers' Institute was organized and it has been the means of useful work in connection with fruit growing, etc. It has erected the Exhibition Hall which is proving a valuable civic asset for exhibition and concert purposes.

Arrangements are being made for Public Tennis and Bowling Grounds in the Alexandra Gardens, and the Athletic Grounds adjoining are in excellent shape for all sorts of athletic sports. The Japanese Tea Gardens there also give promise to be a feature of great interest.

The Ferry Service now owned by the city is being greatly improved and popularized; and an excellent and popular tramway service is being maintained by the B. C. Electric Railway Company.



CENTRAL PUBLIC SCHOOL

**N**ORTH VANCOUVER AS a homesite is but at its beginning; as a tourist resort it is at its best. No place in this broad Dominion can claim a more complete variety of sights and scenes from the hands of nature. The tourist can climb her mountains, and from thence scan the sea of mountains and snow-clad peaks to the north and the east, the rich fertile valley of the Fraser to the south and the varied scenery of sea and mountains to the west; and he can enjoy to the utmost the splendour of the rising sun in the morning or the brilliant hues of the setting sun in the evening. He can descend to the rivers and there revel either in Waltonian sport, or in the sights and scenery in the great canyons where the rocks on either side rise like gigantic castle walls to a height of from 200 to 300 feet; or in the cosy nooks he may find a wonderful pleitude and great variety of flowers, ferns and other



SEYMOUR CANYON

plants of interest. If he is fortunate enough to be there when the mountains are shedding their winter snow or the rainfall is heavy, he will find the canyons filled with roaring torrents of water, carrying down to the sea not only great trees and other debris from the mountains, but also driving onward large boulder stones in their tumultuous course.



LYNN CANYON

**Seymour Canyon** can be reached by the Keith Road to the Seymour Bridge and north 2 miles along Seymour Road.

**Lynn Canyon** can be reached by the Lynn Valley Road and Westover Road.

**Capilano Canyon** can be reached by Keith Road and Capilano Road. Several views of great interest can be seen at and near Capilano Hotel.

**Cypress Canyon** can be reached by a trail cleared from Caulfield's Landing near Point Atkinson

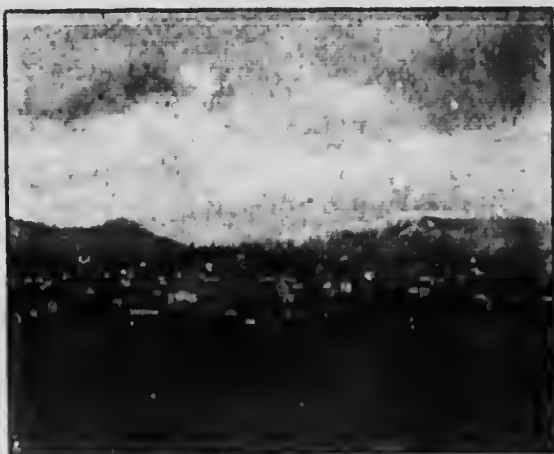


CAPILANO CANYON



# NORTH VANCOUVER

— A MOST PROGRESSIVE COMMUNITY —



View of City of North Vancouver from Inlet

Last five years have shown marvellous progress in spite of some temporary disadvantages.

In 1904 the population was about 1000, now it is 5000.

In 1904 the assessed valuation was \$1,031,150, now it is about \$7,500,000.

In 1901 the number of municipal voters was 574, now it is 1100.

The City as a residence centre is beautifully situated and it has a total area of 3,000 acres.

The District extends from Howe Sound in the west to the North Arm on the east. Lynn Valley, north-east from the city is meantime the most popular part of the district for residences, but a number of delightful summer resorts are being opened up including White Cliff, West Capilano, Deep Cove, Woodlands and Brighton Beach.

Excellent water systems have been constructed for the city, and for the Lynn Valley which are proving a great boon. Water records have been obtained to conserve local supplies in abundance for all local requirements.

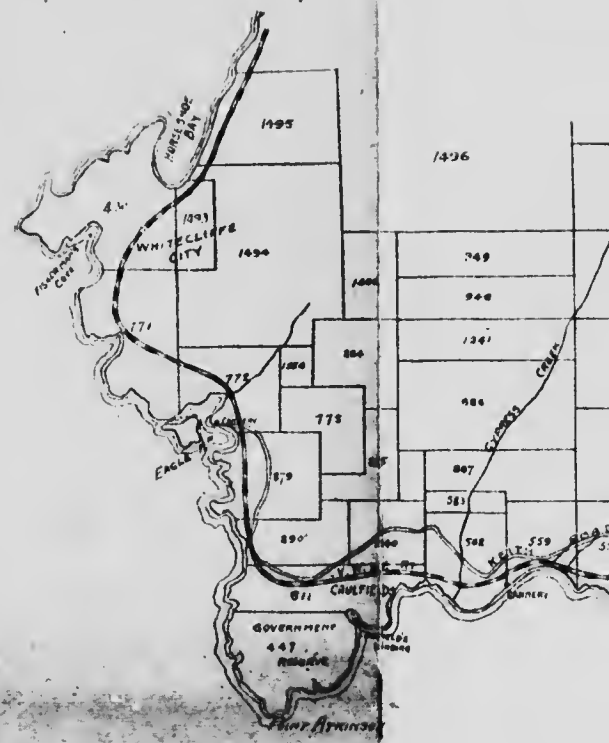
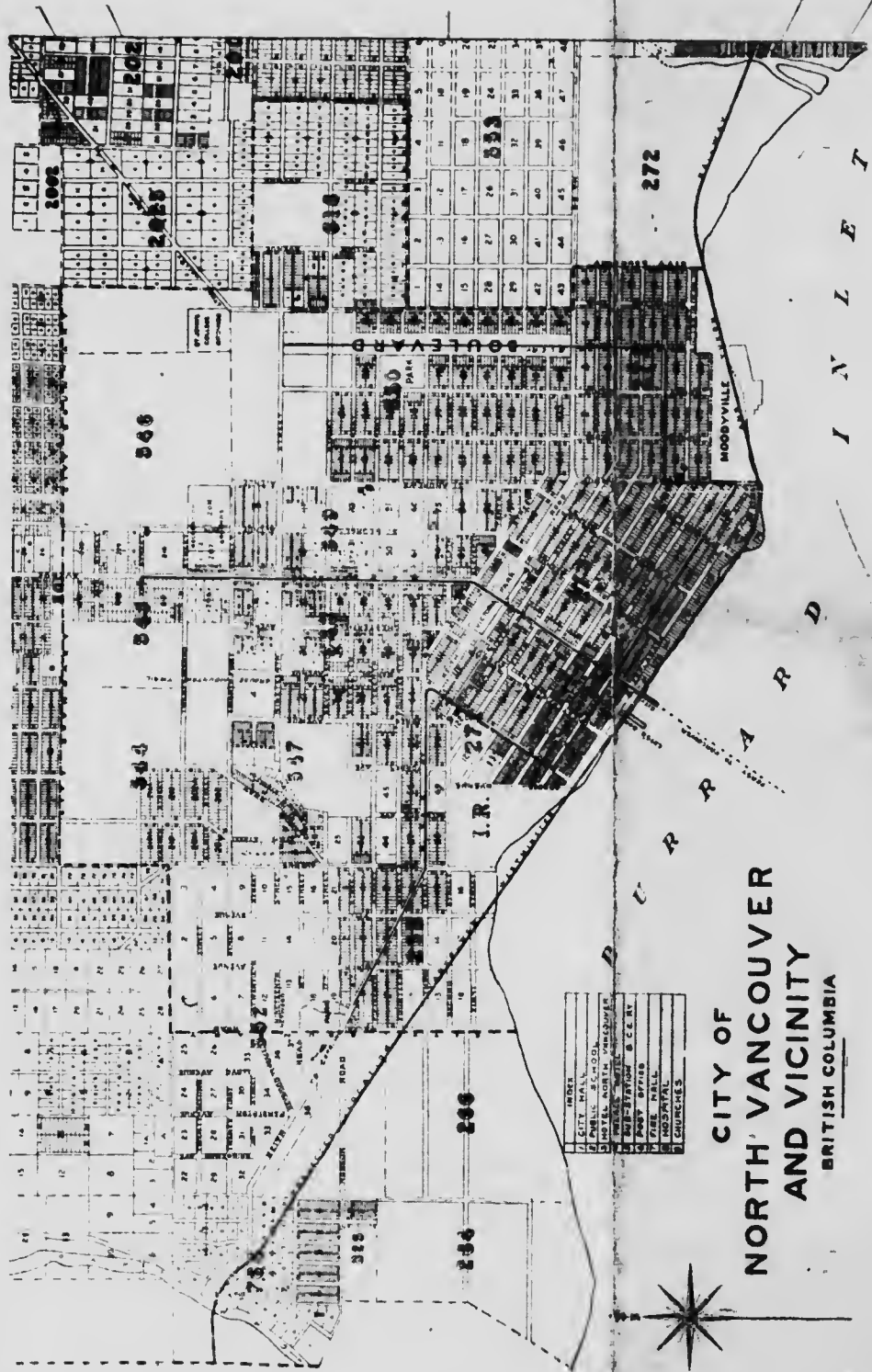
## The Great Needs

are a railway and traffic bridge across the Second Narrows; Railways; and a Harbor Board for Burrard Inlet. Towards these the Dominion Government has promised a bridge subsidy of \$200,000 and a liberal bonus for railway building. The completion of these works will at once place North Vancouver in touch with all the transcontinental railways which enter Vancouver and ensure the early occupation of the loreshore lands with wharves, docks, elevators and industrial works.

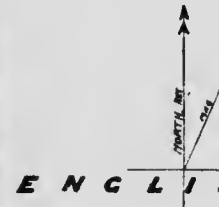
Active steps are now being taken at Ottawa to have a Harbor Board for Burrard Inlet incorporated. If that is done it will ensure the early equipment of the finest natural harbor in the world—without an exception—for the reception and handling of an enormous shipping business.

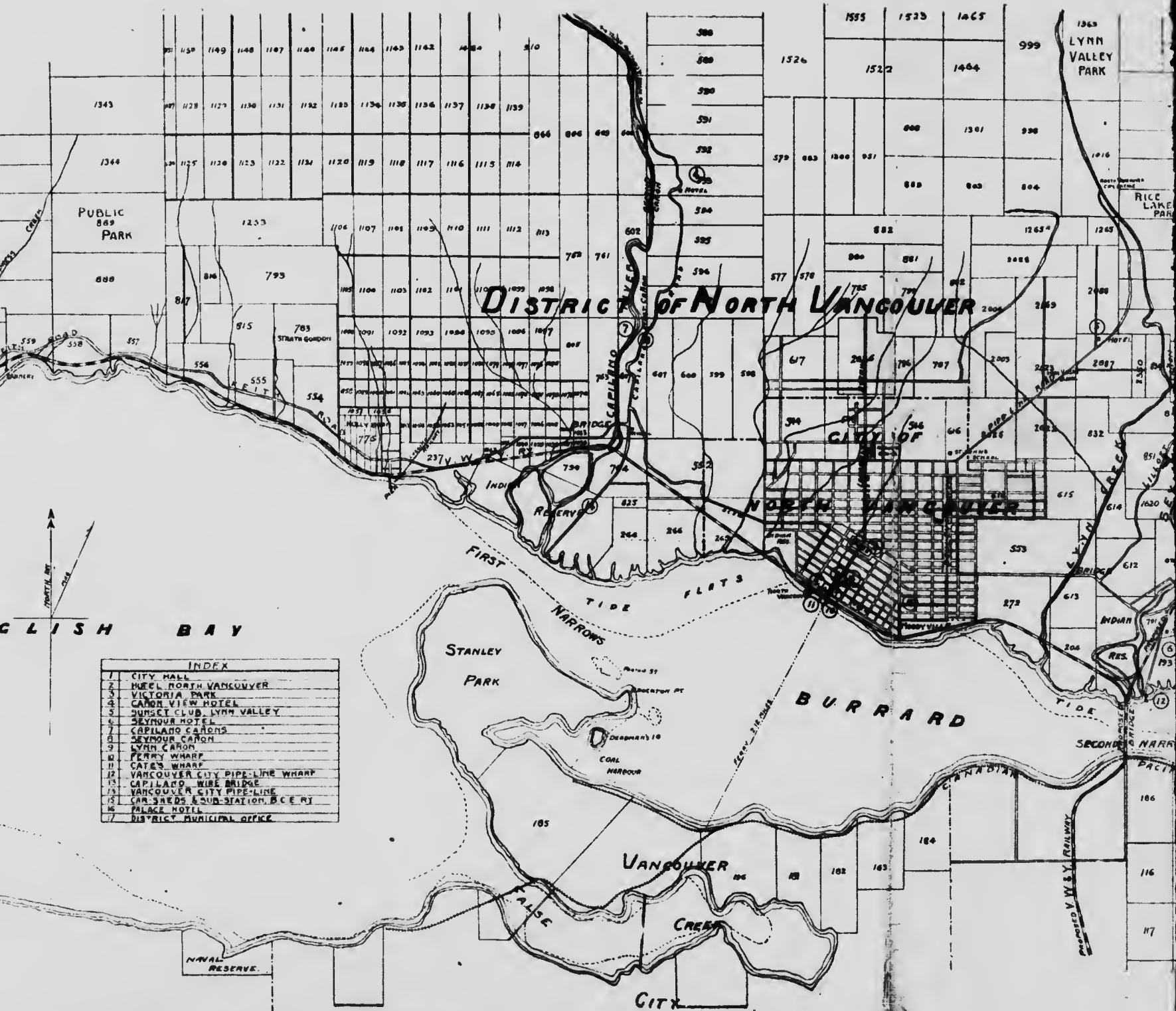
**The Bridge is coming! The Railways are coming!  
The Businesses have long been ready to come but  
could not owing to lack of transportation facilities.  
The Harbor Board is being organized : : : : :**

**THE FUTURE IS OURS**



**INKSTER & WARD**  
Real Estate, Insurance, Loans  
421 Richards St., Phone 2180  
VANCOUVER, B.C.





# DISTRICT OF NORTH VANCOUVER

## CITY OF NORTH VANCOUVER

ENGLISH BAY

INDEX	
1	CITY HALL
2	MUEL NORTH VANCOUVER
3	VICTORIA PARK
4	CANOE VIEW HOTEL
5	SUNSET CLUB, LYNN VALLEY
6	SEYMOUR HOTEL
7	CAPILANO CANYON
8	SEYMOUR CANYON
9	LYNN CANYON
10	PERRY WHARF
11	CATES WHARF
12	VANCOUVER CITY PIPE-LINE WHARF
13	CAPILANO WIRE BRIDGE
14	VANCOUVER CITY PIPE-LINE
15	CAR-SHEDS & SUB-STATION, B.C.E.R.
16	PALACE HOTEL
17	DISTRICT MUNICIPAL OFFICE

INKSTER & WARD



1436

PUBLIC  
PARK  
869

DISTRICT OF NORTH VANCOUVER

CITY OF

ENGLISH BAY

INDEX	
1	CITY HALL
2	HOTEL NORTH VANCOUVER
3	VICTORIA PARK
4	CARON VIEW HOTEL
5	SUNSET CLUB, LYNN VALLEY
6	SEYMOUR HOTEL
7	CAPILANO CANONS
8	SEYMOUR CANON
9	LYNN CANON
10	PERRY WHARF
11	CATES WHARF
12	VANCOUVER CITY PIPE-LINE WHARF
13	CAPILANO WIRE BRIDGE
14	VANCOUVER CITY PIPE-LINE
15	CAR-SREDS & SUB-STATION, B.C.E.R.Y.
16	PALACE HOTEL
17	DISTRICT MUNICIPAL OFFICE

INKSTER & WARD

**WALKER & WARD**  
 Real Estate, Insurance, Loans  
 421 Richards St., Phone 2186  
 VANCOUVER, B. C.



1535 1465

1404

1361

800

802

707

66

593

872

184

183

999  
LYNN VALLEY PARK

1016

1565

2000

615

593

872

184

183

862  
861

850  
878

857  
870  
888

852  
843  
845

832  
814  
812

613  
612  
610

872  
613  
608

184

183

874  
877

886  
1478

1403  
1361

1419  
1490

800  
828  
827

826  
778  
830

2044  
2029  
2075

621  
621

184

183

897

1406  
1403

1000  
1413  
1410

1001  
1006  
1008

1415  
1410

800  
1359  
1360

2049  
2048

623  
622  
621

184

183

1007

1000  
1007  
1006

1000  
1008  
1008

1000  
1008  
1008

1000  
1008  
1008

1000  
1008  
1008

1000  
1008  
1008

1000  
1008  
1008

1000  
1008  
1008

1000  
1008  
1008

1000  
1008  
1008

1007

1000  
1007  
1006

1000  
1008  
1008

1000  
1008  
1008

1000  
1008  
1008

1000  
1008  
1008

1000  
1008  
1008

1000  
1008  
1008

1000  
1008  
1008

1000  
1008  
1008

1000  
1008  
1008

1353  
871

878  
879

1550  
1534

1000  
1008  
1008

1000  
1008  
1008

1000  
1008  
1008

1000  
1008  
1008

1000  
1008  
1008

1000  
1008  
1008

1000  
1008  
1008

1000  
1008  
1008

VANCOUVER

DEEP COVE

BURRARD INLET

PACIFIC RAILWAY

INDIAN RESERVE

FRASER RIVER

LYNN VALLEY PARK

RICE LAKE PARK

WOODLAKE

BRONNILL BAY

KEITH ROAD

INDIAN RESERVE

# HOTELS



HOTEL NORTH VANCOUVER

## FERRY TIME TABLE

Half hourly service between North Vancouver and Vancouver City from 6 a.m. to 12 p.m.

Wharves at foot of Lonsdale Ave., North Vancouver and foot of Columbia Street, Vancouver.

## TRAM CARS

Tram cars leave the wharf half hourly on the arrival of the ferry boats.

Fastward Cars take passengers for Seymour River and Lynn Valley and to the Queensbary boulevard and park.



PALACE HOTEL



CAPILANO HOTEL

Northward Car takes passengers going up Lonsdale Avenue to Exhibition Building and Grounds and is the route to Grouse Mountain.

Westward Cars take passengers toward Capilano Hotels and to West Capilano.

Tally-ho and Automobile for Canyon and Capilano Hotels meet all cars.

Livery Stables at North Vancouver Hotel and at Bert Anson's.



LYNN VALLEY HOTEL



