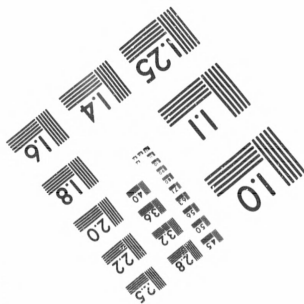
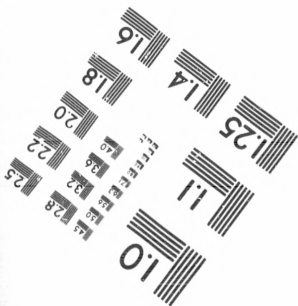
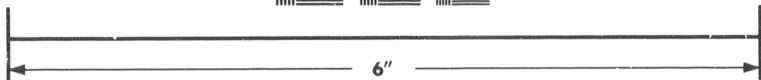
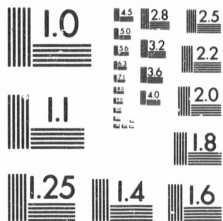


**IMAGE EVALUATION
TEST TARGET (MT-3)**



**Photographic
Sciences
Corporation**

23 WEST MAIN STREET
WEBSTER, N.Y. 14580
(716) 872-4503

**CIHM/ICMH
Microfiche
Series.**

**CIHM/ICMH
Collection de
microfiches.**



Canadian Institute for Historical Microreproductions / Institut canadien de microreproductions historiques

© 1983

Technical and Bibliographic Notes/Notes techniques et bibliographiques

The Institute has attempted to obtain the best original copy available for filming. Features of this copy which may be bibliographically unique, which may alter any of the images in the reproduction, or which may significantly change the usual method of filming, are checked below.

L'Institut a microfilmé le meilleur exemplaire qu'il lui a été possible de se procurer. Les détails de cet exemplaire qui sont peut-être uniques du point de vue bibliographique, qui peuvent modifier une image reproduite, ou qui peuvent exiger une modification dans la méthode normale de filmage sont indiqués ci-dessous.

- Coloured covers/
Couverture de couleur
- Covers damaged/
Couverture endommagée
- Covers restored and/or laminated/
Couverture restaurée et/ou pelliculée
- Cover title missing/
Le titre de couverture manque
- Coloured maps/
Cartes géographiques en couleur
- Coloured ink (i.e. other than blue or black)/
Encre de couleur (i.e. autre que bleue ou noire)
- Coloured plates and/or illustrations/
Planches et/ou illustrations en couleur
- Bound with other material/
Relié avec d'autres documents
- Tight binding may cause shadows or distortion along interior margin/
La reliure serrée peut causer de l'ombre ou de la distortion le long de la marge intérieure
- Blank leaves added during restoration may appear within the text. Whenever possible, these have been omitted from filming/
Il se peut que certaines pages blanches ajoutées lors d'une restauration apparaissent dans le texte, mais, lorsque cela était possible, ces pages n'ont pas été filmées.
- Additional comments:/
Commentaires supplémentaires:

- Coloured pages/
Pages de couleur
- Pages damaged/
Pages endommagées
- Pages restored and/or laminated/
Pages restaurées et/ou pelliculées
- Pages discoloured, stained or foxed/
Pages décolorées, tachées ou piquées
- Pages detached/
Pages détachées
- Showthrough/
Transparence
- Quality of print varies/
Qualité inégale de l'impression
- Includes supplementary material/
Comprend du matériel supplémentaire
- Only edition available/
Seule édition disponible
- Pages wholly or partially obscured by errata slips, tissues, etc., have been refilmed to ensure the best possible image/
Les pages totalement ou partiellement obscurcies par un feuillet d'errata, une pelure, etc., ont été filmées à nouveau de façon à obtenir la meilleure image possible.

This item is filmed at the reduction ratio checked below/
Ce document est filmé au taux de réduction indiqué ci-dessous.

10X	14X	18X	22X	26X	30X
<input type="checkbox"/>	<input type="checkbox"/>	<input checked="" type="checkbox"/>	<input type="checkbox"/>	<input type="checkbox"/>	<input type="checkbox"/>
12X	16X	20X	24X	28X	32X

The copy filmed here has been reproduced thanks to the generosity of:

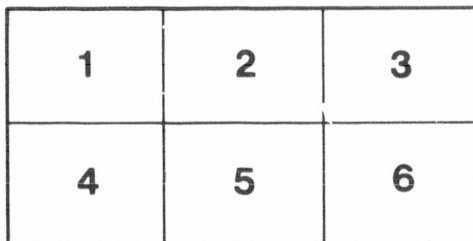
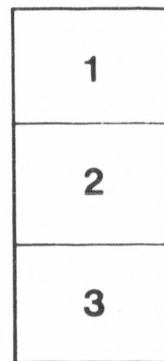
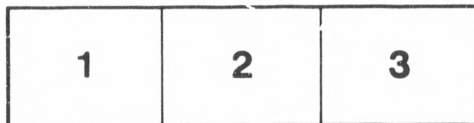
Thomas Fisher Rare Book Library,
University of Toronto Library

The images appearing here are the best quality possible considering the condition and legibility of the original copy and in keeping with the filming contract specifications.

Original copies in printed paper covers are filmed beginning with the front cover and ending on the last page with a printed or illustrated impression, or the back cover when appropriate. All other original copies are filmed beginning on the first page with a printed or illustrated impression, and ending on the last page with a printed or illustrated impression.

The last recorded frame on each microfiche shall contain the symbol → (meaning "CONTINUED"), or the symbol ▼ (meaning "END"), whichever applies.

Maps, plates, charts, etc., may be filmed at different reduction ratios. Those too large to be entirely included in one exposure are filmed beginning in the upper left hand corner, left to right and top to bottom, as many frames as required. The following diagrams illustrate the method:



L'exemplaire filmé fut reproduit grâce à la générosité de:

Thomas Fisher Rare Book Library,
University of Toronto Library

Les images suivantes ont été reproduites avec le plus grand soin, compte tenu de la condition et de la netteté de l'exemplaire filmé, et en conformité avec les conditions du contrat de filmage.

Les exemplaires originaux dont la couverture en papier est imprimée sont filmés en commençant par le premier plat et en terminant soit par la dernière page qui comporte une empreinte d'impression ou d'illustration, soit par le second plat, selon le cas. Tous les autres exemplaires originaux sont filmés en commençant par la première page qui comporte une empreinte d'impression ou d'illustration et en terminant par la dernière page qui comporte une telle empreinte.

Un des symboles suivants apparaîtra sur la dernière image de chaque microfiche, selon le cas: le symbole → signifie "A SUIVRE", le symbole ▼ signifie "FIN".

Les cartes, planches, tableaux, etc., peuvent être filmés à des taux de réduction différents. Lorsque le document est trop grand pour être reproduit en un seul cliché, il est filmé à partir de l'angle supérieur gauche, de gauche à droite, et de haut en bas, en prenant le nombre d'images nécessaire. Les diagrammes suivants illustrent la méthode.

[By Prof. A. F. Fowden]

Pamph
HC
B

British Association

FOR THE

Advancement of Science

1897

LIBRARY
JUN 27 1932
UNIVERSITY OF TORONTO

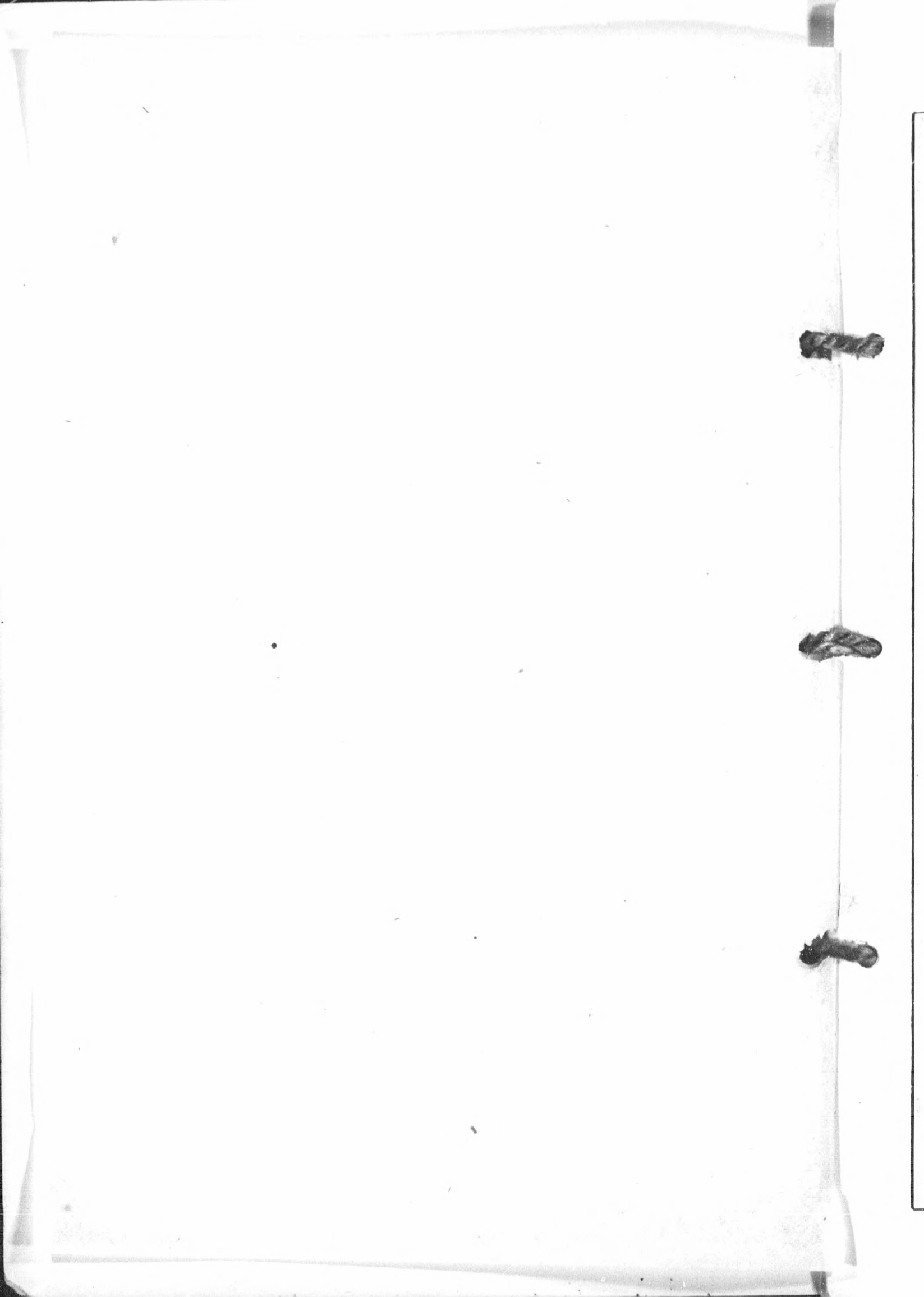
TORONTO

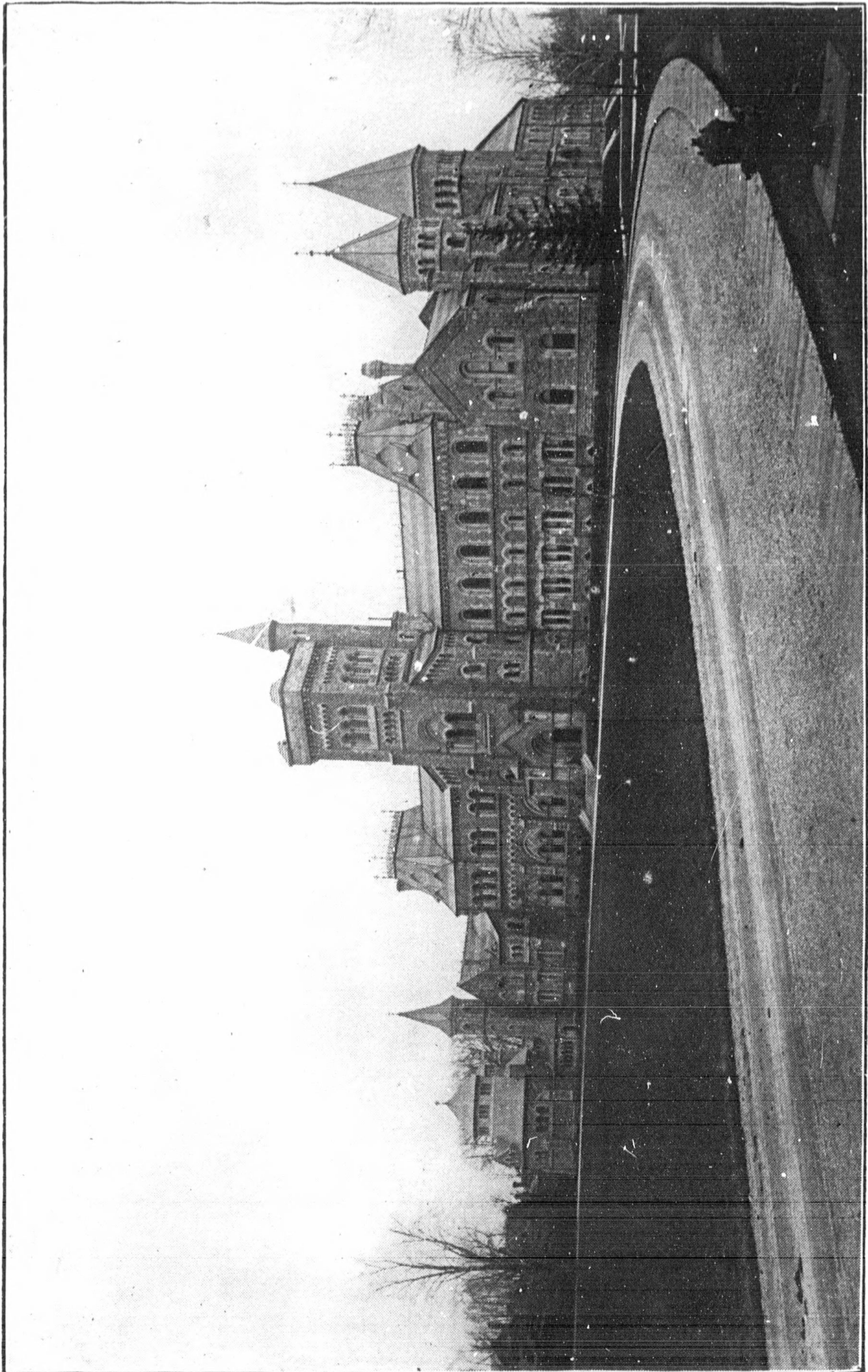


MEETING

SPECIAL EXCURSIONS

copy of Prof. Fowden





UNIVERSITY OF TORONTO.

Pam
HC
B



Pamph.
HC
B



NIAGARA FALLS, CANADIAN SIDE

SATURDAY, AUG. 21ST

(A) Niagara River, Niagara Falls, and Return.

This trip, in favourable weather, is one of the most charming in the world.

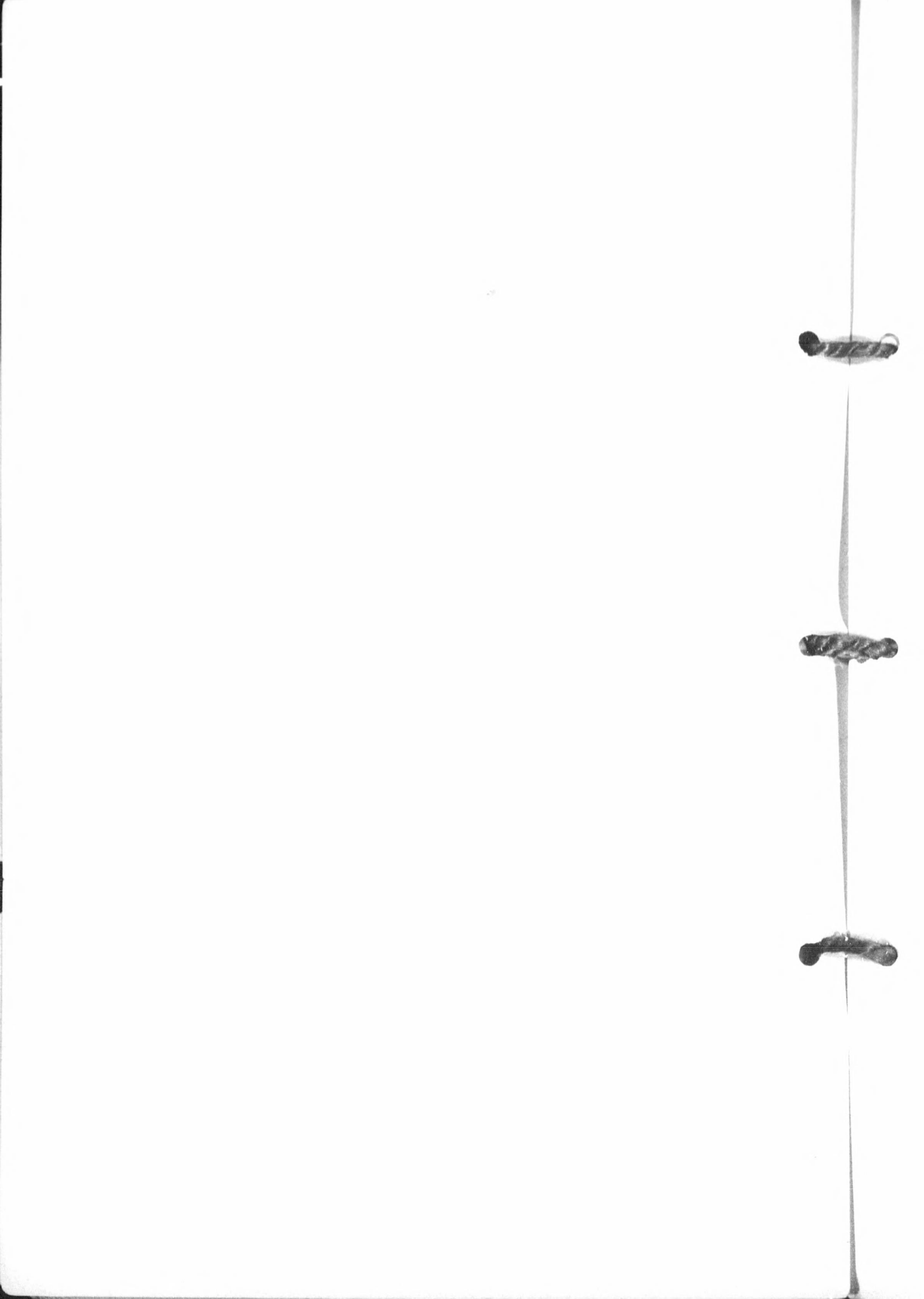
Leaving Toronto by one of the steamers of the Niagara Navigation Company, we reach, after a delightful sail of about two hours on Lake Ontario, the town of Niagara-on-the-Lake.

It is situated on the Canadian side of the Niagara River and just opposite the American Fort—the river forming the boundary line between Canada and the United States.

The boat, after a short stay, proceeds up the river to Queenston, opposite which, on the American side, is the village of Lewiston. A ferry runs between Queenston and Lewiston.

Here one has a choice of routes to the Falls, as electric railways are laid on both the Canadian and American sides of the river. To obtain a view of both sides take the Canadian road from Queenston to the Falls, crossing at the Falls to the American side, and returning from the Falls to Lewiston by the Gorge road; or vice versa.

The Canadian road runs through Queenston to the top of Queenston Heights, rising 350 feet in a mile and a half. It then skirts, in some places, the brink of the precipices which overlook the river, passes the Whirlpool and Rapids, and finally reaches the Falls. The excursionists taking the *Chippewa and Upper Rapids Excursion* will continue in the same cars, passing along the great rapids *above the Falls*, and returning to Queen Victoria Park for luncheon. One can then cross the bridge at the Falls and take the great Gorge Route back to Lewiston; this road being built close to the waters' edge and giving one an idea of the terrific power of the waters which



boil forth from the foot of the Falls and tumble onwards in seething rapids to Lake Ontario.

Points of Interest.

CANADIAN SIDE.

Brock's Monument on Queenston Heights and view from top; Battlefield and spot where Brock fell, with tablet erected by the Prince of Wales; The Gorge; Whirlpool with rapids above and below; Falls; Queen Victoria Park; Rapids above Falls; Suspension Bridges; Chippewa.

AMERICAN SIDE.

Observation Tower in Prospect Park; American Falls; Devil's Hole; Whirlpool Rapids where Webb lost his life.

Rates.

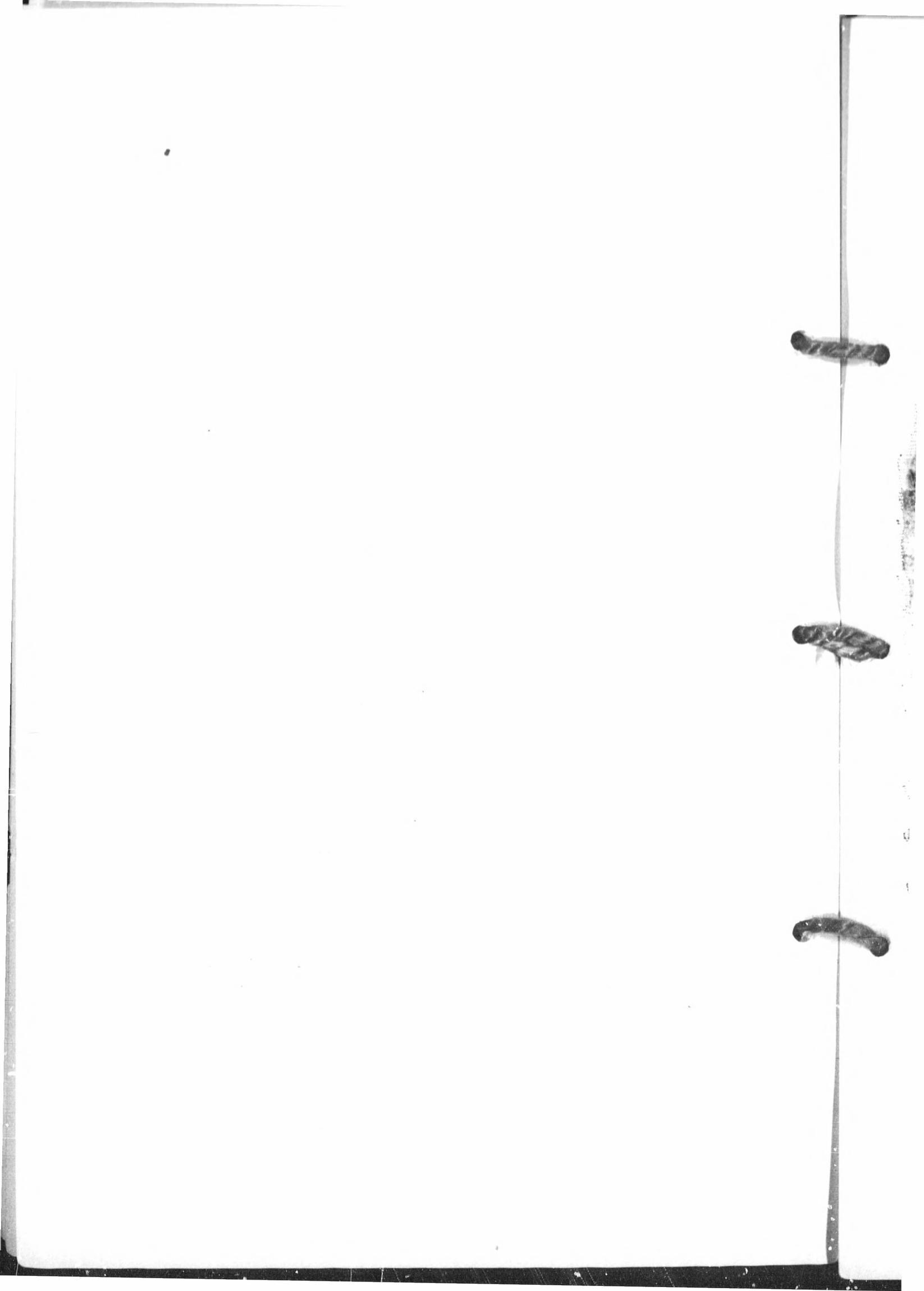
- 1.—To *Niagara Falls* via Queenston and Niagara Falls Park and River Railway, *Canadian side*, and return same way, good for any boat sailing Saturday, August 21st, and return until Monday, August 23rd. \$1.50
Return same day 1.25
 - 2.—*Niagara Falls* via Lewiston and Niagara Falls and Lewiston Electric Railway (Gorge Route), *American side*, returning same way, good for any boat sailing Saturday, August 21st, and return until Monday, August 23rd. 1.50
Return same day 1.25
 - 3.—*Chippewa Upper Rapids* via Queenston, Niagara Falls Park and River Railway, *Canadian side*, to Chippewa, return to Falls across Upper Suspension Bridge to the American side, Niagara Falls and Lewiston Electric Railway (Gorge Route) to Lewiston, good for any boat sailing Saturday, August 21st, return same day or on Monday, August 23rd. Bridge toll included..... 1.75
- One can also go to Niagara-on-the-Lake or to Queenston on any Wednesday or Saturday afternoon at 2 p.m. and return same evening for75

Time Table.

Boats leave on Saturday, Aug. 21st, at 7, 9, 11 a.m., 2, 4.45 p.m., returning same day; but if one wishes to see the Falls the morning boats must be taken.

Distances.

Toronto to Niagara 36 miles, Niagara to Queenston 7 miles, Queenston to Falls 7 miles.



SATURDAY, AUG. 21ST.

(B) Muskoka District and Return.

The journey to the Muskoka district is made partly by rail and partly by boat.

Leaving Toronto in the morning by the Grand Trunk Railway one arrives at Muskoka Wharf, on the southerly end of Lake Muskoka, in about three hours. Here the boats of the



ECHO ROCK, LAKE JOSEPH

Muskoka Navigation Company are ready to transfer the passengers to any of the desirable points on the Lakes.

One has a choice of many routes, and the three large lakes, Muskoka, Rosseau and Joseph are provided with comfortable resting places with good accommodation. But perhaps the best trip for one who has but a limited time at his disposal is



from Muskoka Wharf, through Lake Muskoka, and along the Indian River to Port Carling, which lies at the entrance to Lake Rosseau. Then from Port Carling through Lake Rosseau to Port Sandfield, which is at the Junction of Lake Rosseau and Lake Joseph. Then through Lake Joseph to Port Cockburn.

Rates.

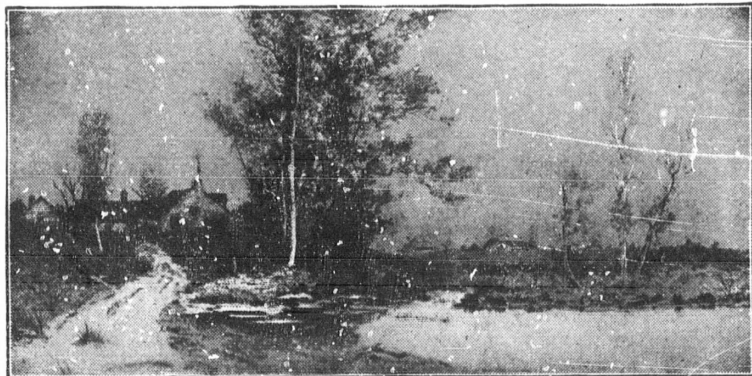
From Toronto to any point on the Muskoka Lakes and return, good going Saturday, Aug. 21st, and returning Monday, 23rd..... \$1.65

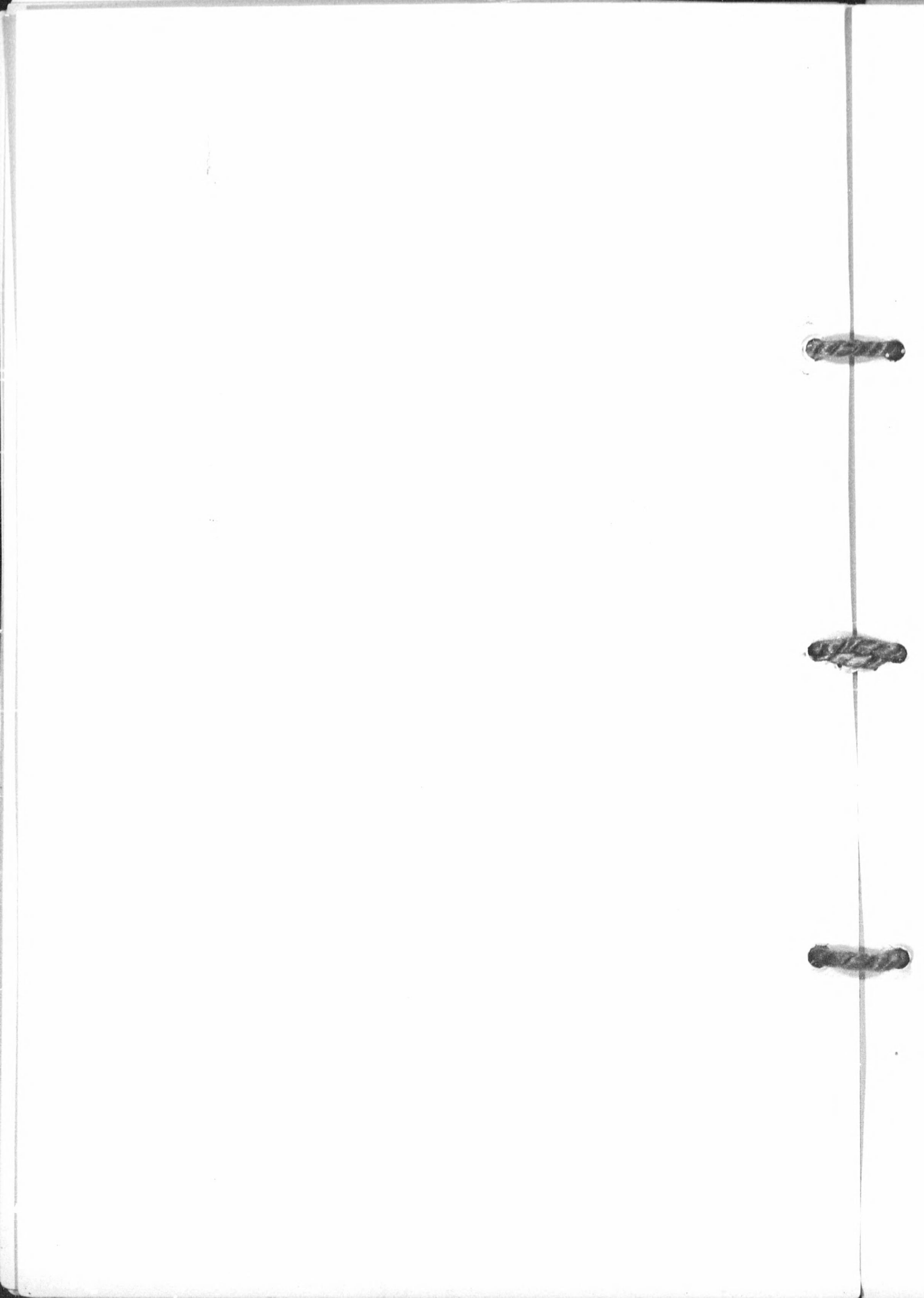
Time Table.

Leave Toronto by G.T.R., Union Station, 11.20 a.m., reaching Muskoka Wharf at 2.53 p.m. If the Lake Joseph route be taken, one arrives at Port Cockburn about 8 p.m. If the Lake Rosseau route be chosen, one reaches Rosseau about 7.30 p.m. Dinner is served on the Muskoka boats; charge 50 cents.

Distances.

Toronto to Muskoka Wharf, 112 miles.
Muskoka Wharf to Beaumaris, 13 miles.
Muskoka Wharf to Bala, 20 miles.
Beaumaris to Port Carling, 7 miles.
Muskoka Wharf to Rosseau, 36 miles.
Muskoka Wharf to Port Cockburn, 29 miles.





SATURDAY, AUG. 21ST.

(C) Penetanguishene and Return.

Penetanguishene is situated on Georgian Bay, and its harbour is one of the finest sheets of water in Canada. The islands of the Georgian Bay, thousands in number, commence at the mouth of this harbour, and extend northwards for fifty miles. The run from Toronto to Penetanguishene is made in a few hours, and there is good accommodation at the Penetanguishene Hotel.

Points of Interest.

Indian Reserve on Christian Island, Giant's Tomb, French Settlement, Martyr's Memorial Church of St. Joseph, Wye River.

Rates.

The railway fare from Toronto to Penetanguishene and return is \$3.10, good from Saturday until Monday. The rate at the "Penetanguishene" is \$2.00 per diem; and portions of a day proportionately.

Time Table.

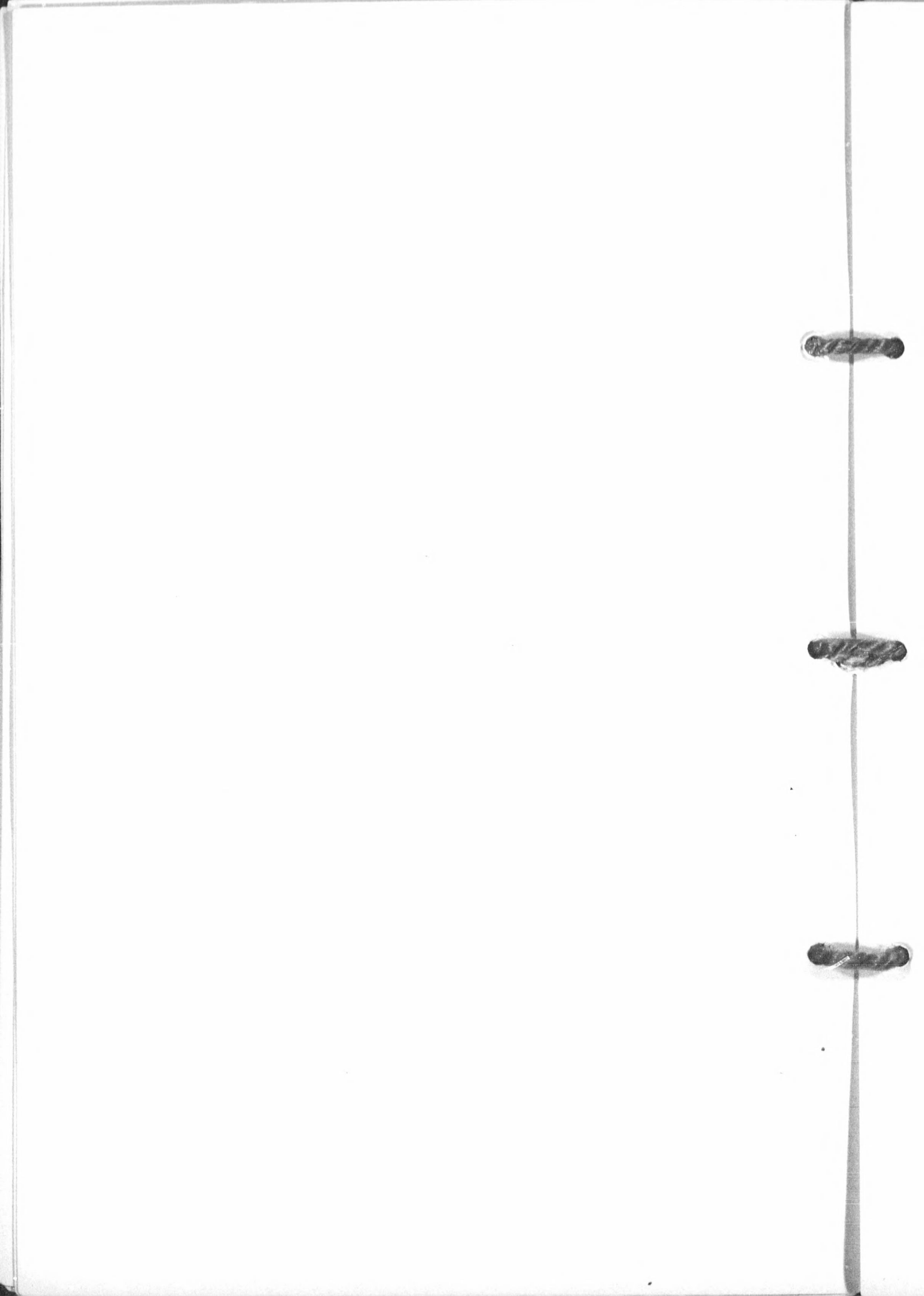
For this excursion (Saturday to Monday) the most pleasant way is to leave Toronto by the morning train of the Grand Trunk, which departs from the Union Station at 8.45 a.m., reaching Penetanguishene about noon.

Distance.

From Toronto to Penetanguishene is 102 miles; time by rail, 3½ hours.

N.B.

For this excursion, arrangements have been made by the proprietor of the Hotel to run the small steamer *Voyageur* through the islands about Penetanguishene. A small sum will be charged each passenger in order to cover the expenses of the trip, which will take two or three hours.



SATURDAY, AUG. 21ST.

(D) Hamilton, Niagara Falls, and Return.

Instead of going across Lake Ontario to Niagara Falls, the choice is left of going via Hamilton by rail. Or, if one desires to go by boat to Hamilton, there is an excellent line of steamers belonging to the Hamilton Steamboat Co., which runs between Toronto and Hamilton daily. Connections are made by the boats with all points west of Hamilton.

Rates.

To Niagara Falls, via Hamilton, all rail, good from Saturday, August 21st, to Monday, August 23rd, and to stop over in Hamilton.....	\$1.50
Return same day	1.25
Toronto to Hamilton, by Macassa or Modjeska, and return, any day of the week.....	1.25
Toronto to Hamilton, on Wednesdays and Saturdays, leaving at 2 p.m., and return.....	0.50
Going by boat, returning C.P.R., Sat.-Mon....	1.25
Going by boat, returning by boat, Sat.-Mon....	0.85

Time Table.

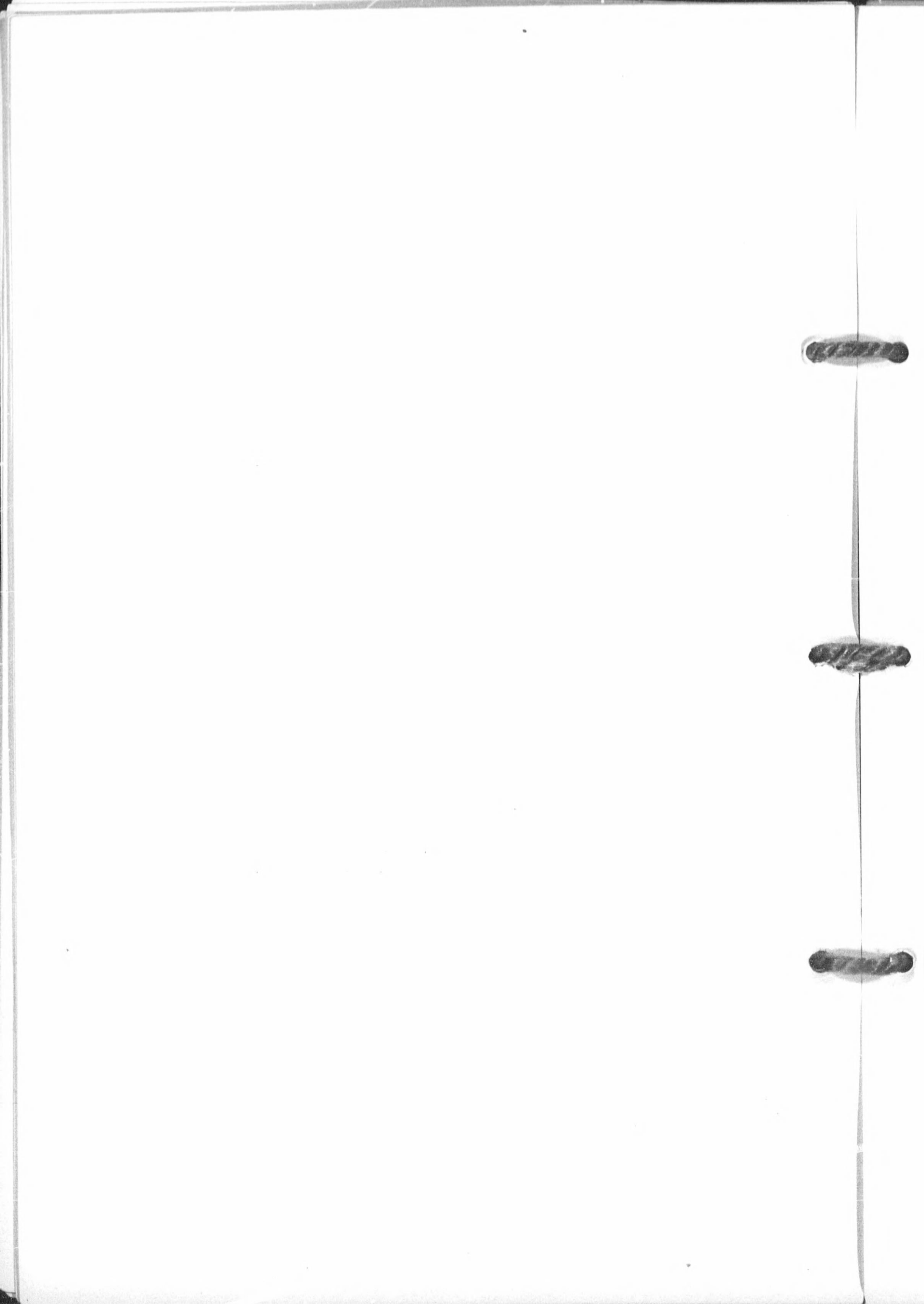
Trains of G.T.R. and C.P.R. run to Hamilton every few hours during the day. Boats (Macassa and Modjeska) leave Toronto 7.30 a.m., 11 a.m., 2 p.m. daily; returning same day, leave Hamilton 10.45 a.m.; 2 p.m., 5.30 p.m.

Distance.

Toronto to Hamilton, 40 miles; Niagara Falls, 82 miles.

N.B.

In connection with this trip, the Science Association and Board of Trade of Hamilton are arranging a reception for the members of the Association, the details of which will be published before Aug. 18.



SATURDAY, AUG. 21ST.

(X) Toronto to Peterboro', Rice Lake and Return.

This excursion has been specially arranged for sections G and H, and will probably be conducted by Mr. A. F. Chamberlain, Dr. G. H. Needler and Mr. David Boyle.

The trip to Peterboro' is made by rail, either G.T.R. or C.P.R.; the latter being the shorter route. Steamer will then convey the visitors down the Otonabee River to Rice Lake.

At Peterboro' are the largest electrical works in Canada, belonging to the Canadian General Electric Co., covering a space of 12 acres, and including five large buildings devoted entirely to the manufacture of electrical supplies. These buildings will be thrown open to the visitors.

Rice Lake is of interest to all historians and anthropologists, and an opportunity will be given those taking this trip to visit the celebrated Serpent Mounds and the Indian village of Hiawatha.

Peterboro' and Rice Lake canoes have become famous all over the continent. They are manufactured by several large firms in Peterboro'.

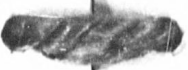
Rates.

Toronto to Peterboro' and return.....	\$1.75
Peterboro' to Rice Lake and return (including Dinner and Supper)	1.25
Hotel Expenses at Grand Central Hotel.....	2.00
Total expense of journey.....	\$5.00

Time Table.

Leave Toronto any train Saturday, preferably 5.10 p.m. or 9 p.m. C.P.R. Stop at Grand Central Hotel, Peterboro', where the special rate of \$2.00 has been arranged to cover expenses of stay.

Breakfast at hotel Sunday morning 7-8. Leave at 8 a.m. for Rice Lake by steamer *North Star*, reaching there about noon. Dinner at Rice Lake. The afternoon will then be spent in visiting points of interest on the Lake, and supper will be



served in the evening. Return to Peterboro' same night. Those not interested in electrical work may leave Monday at 7.10 a.m.

Breakfast at hotel, Monday. Visit Electrical Works and Canoe Companies' works from 9 a.m. to 1 p.m. Dinner at hotel. Leave for Toronto 4.10 p.m.

Distance.

Toronto to Peterboro', C.P.R. direct line, 76 miles.

Peterboro', down the Otonabee River to Rice Lake, 25 miles.

Mouth of Otonabee to Idyl Wyld in Rice Lake, 9 miles.

N.B.—Those desirous of making this excursion, and of also going to Niagara on Saturday, can easily combine the two trips by leaving Toronto for Niagara at either 7, 9, or 11 a.m.; then returning to Toronto at 4.30 p.m. or 8.15 p.m. The C.P.R. train can be taken for Peterboro' at 5.10 p.m. or 9 p.m.

MONDAY, AUG. 23RD.

Toronto to Don Valley and Return.

This excursion is for the Geological Section (C), and will be conducted by Dr. A. P. Coleman and Dr. J. W. Spencer.

It will probably take place in the morning at 9-11, and is for the object of viewing the interglacial deposits in the valley of the River Don.

Details will be arranged on Friday, August 20.

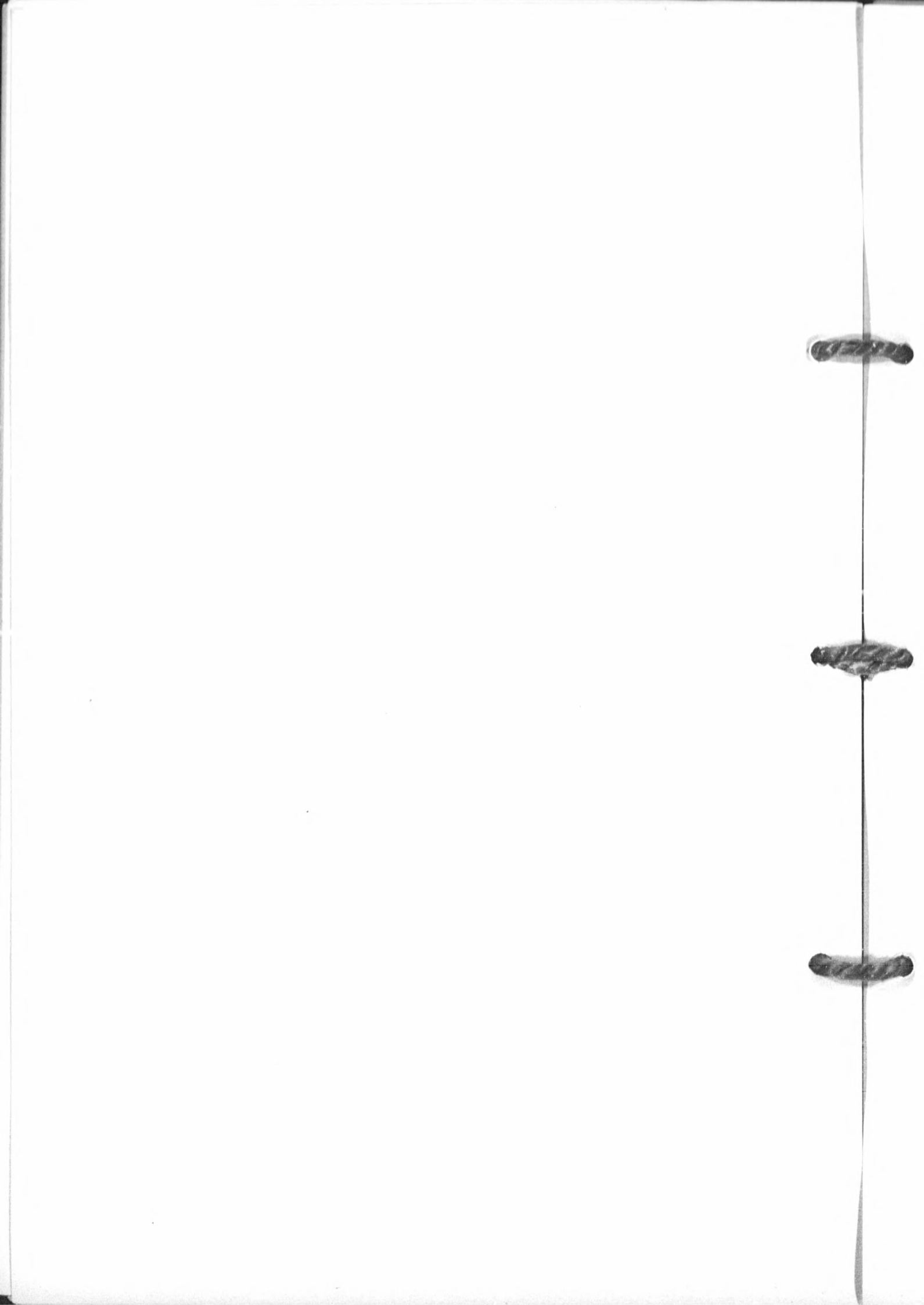
MONDAY, AUG. 23RD.

Toronto to Scarboro' Heights and Return.

This trip will start on Monday afternoon, at 1.20 o'clock, by G.T.R. for Markham Road, reaching there at 2 p.m.

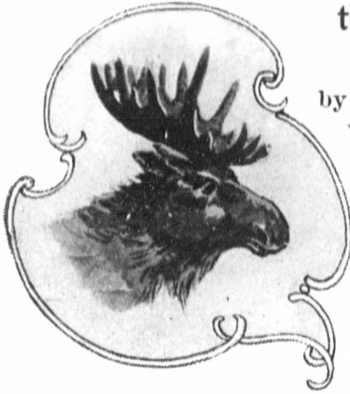
Conveyances will then take the party to the Heights of Scarboro', and after a walk of about two miles, the conveyances will be taken to East Toronto. From here the journey home will be made in electric cars.

N.B.—This trip will be free of charge to all geologists, and those desirous of making it will please notify Dr. A. P. Coleman, not later than Friday evening, August 20.



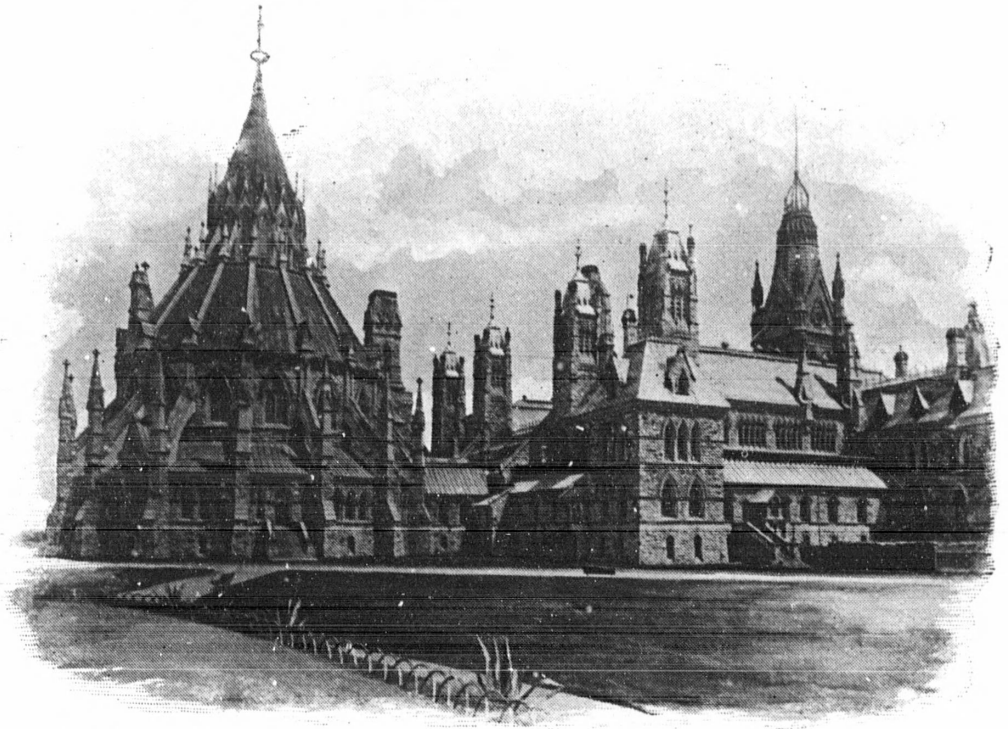
THURSDAY, AUG. 26TH.

(E) Toronto to Ottawa and Montreal,
via Parry Sound, and through
the Algonquin Park.



This trip, which has been specially arranged by the Canada Atlantic and Grand Trunk Railways, is made partly by boat and partly by rail. The first portion of the journey is by rail from Toronto to Penetanguishene. There the steamer is taken for Parry Sound, and the journey, which takes four or five hours, is made through the thousands of islands which lie scattered over the eastern shore of Georgian Bay. From Parry Sound a run of three or four hours brings us to the famous Algonquin

Park, an area covering nearly 2,000 square miles, set apart by the Ontario Government as a game preserve, where no one is allowed to shoot, and where it is only possible to fish by permission of the Government. From this point there is a succession of lakes and streams, some of which run alongside of the railway track, until we reach the city of Ottawa, the capital of the Dominion.





Ottawa is, next to Quebec, the most picturesque city on the continent. The Parliament Buildings situated on a bluff towering above the Ottawa River, the Chaudiere Falls, and the long line of the Laurentian Mountains stretching away to the north, form a picture not easily forgotten.

On reaching Ottawa, Friday, August 27th, at 7 p.m., the excursionists of this trip will be met by the Citizens' Committee of Ottawa, who will present each excursionist with a souvenir, and a banquet will be given in honour of the guests at 8 p.m.

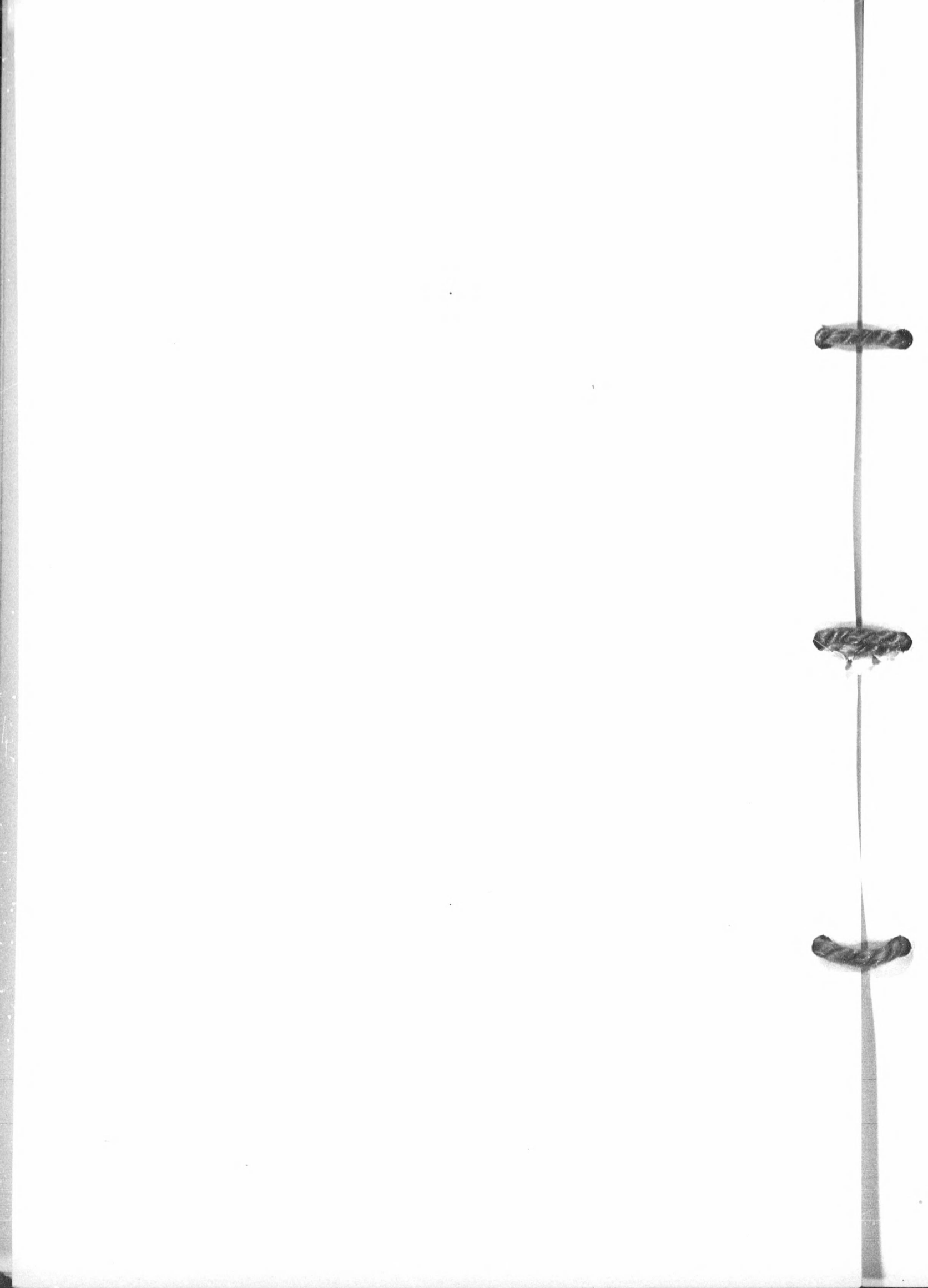
On Saturday morning the visitors will be shown the city, and a lunch at Rockliffe on the Ottawa River will be given at noon. The train will leave for Montreal in the afternoon of August 28th. Montreal will be reached that evening.



ENTRANCE TO ROCK LAKE

Rates.

Toronto to Penetanguishene, Parry Sound, Ottawa, Montreal, return by G.T.R. to Toronto, good from Thursday, August 26th to Wednesday, Sept. 1st...	\$9.00
Sleeping Car from Parry Sound to Montreal	2.50
Room and Breakfast at Russell House.....	1.25



Time Table.

Leave Toronto by special train Thursday, August 26th, at 10.45 a.m.; arrive at Penetanguishene 1.45 p.m. Lunch at Penetanguishene Hotel from 1.45 to 2.45 p.m., for which a charge of 75 cents will be made, this, however, including transportation from train to hotel and back to boat.

Leave by steamer *City of Toronto* at 3 p.m.; dinner on boat, 75 cents; arrive at Rose Point, Parry Sound Harbor, at 8 p.m. Here sleepers will be waiting for the excursionists, and the train will be drawn out on the dock to ensure as much cool air as possible.

Early next morning the train will move out, and at 8 a.m. will reach Rock Lake on the border line of Algonquin Park, where breakfast will be served under canvas from 9 to 11 a.m. This breakfast is given by the Toronto Committee, and to it are invited all the prominent citizens of Ottawa.

Leave Rock Lake at 12.30; lunch at Madawaska, 1.30 p.m. to 2 p.m. (50 cents); reach Ottawa at 7 p.m. Dinner at 8 p.m. at the Russell House, which is a stone's throw from the C.A.R. station, sleep that night and breakfast next morning at the Russell House.

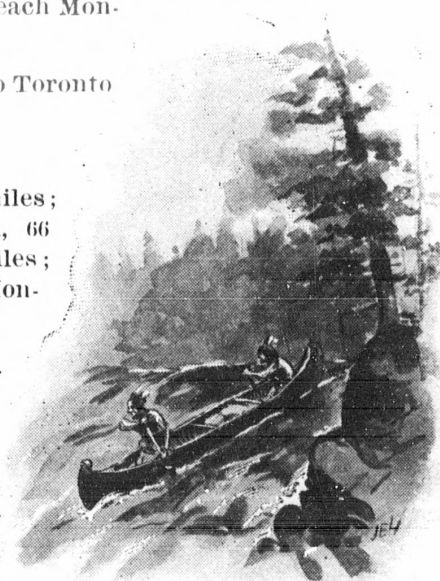
Tour through the city of Ottawa from 9 a.m. to 12.30 p.m., Saturday. Lunch 12.30 to 2.30 p.m. at Rockliffe, given by city of Ottawa. Leave Ottawa 3.30 p.m.; reach Montreal 7 p.m.

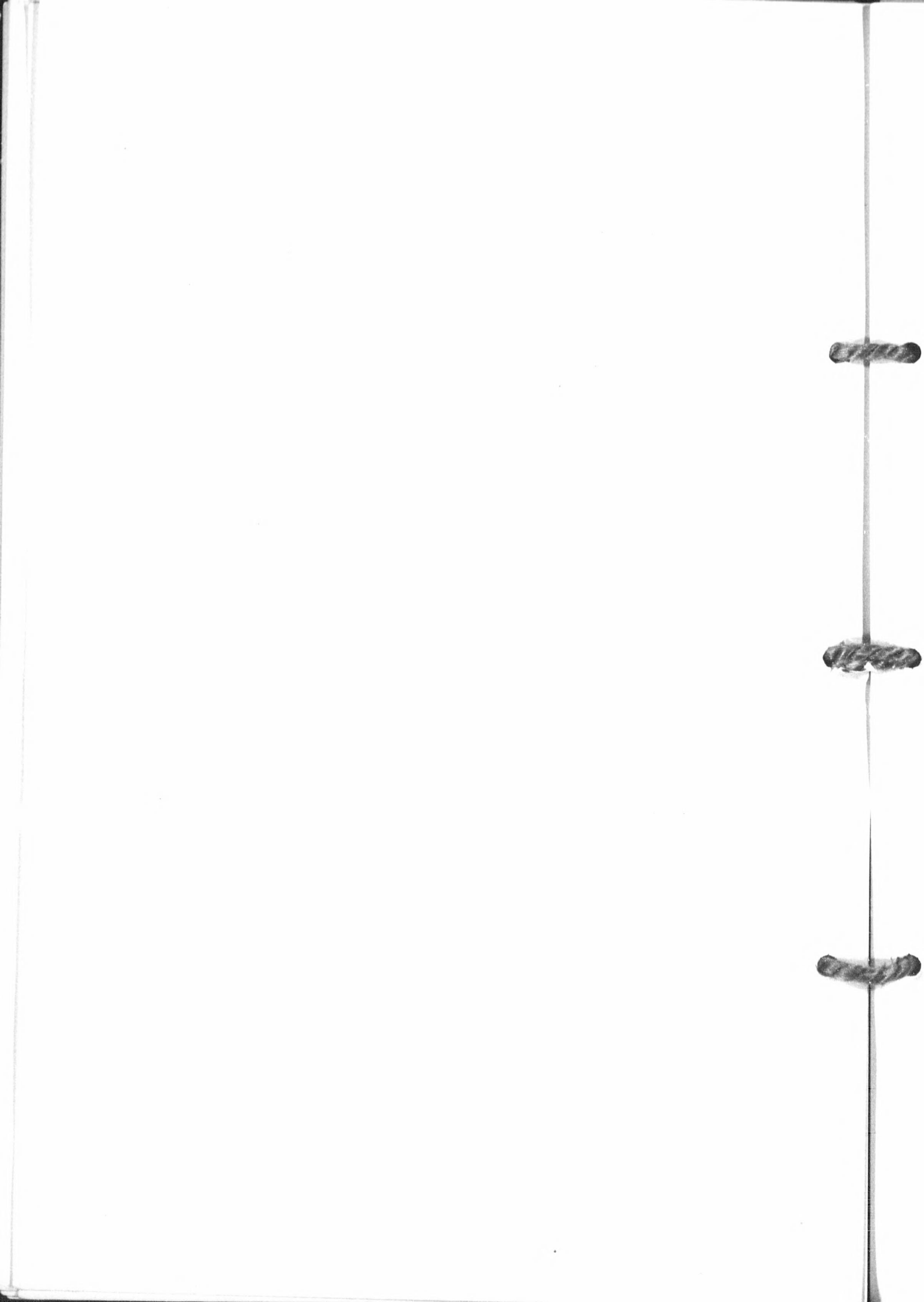
Return on any train of G.T.R. to Toronto on or before Wednesday, Sept. 1st.

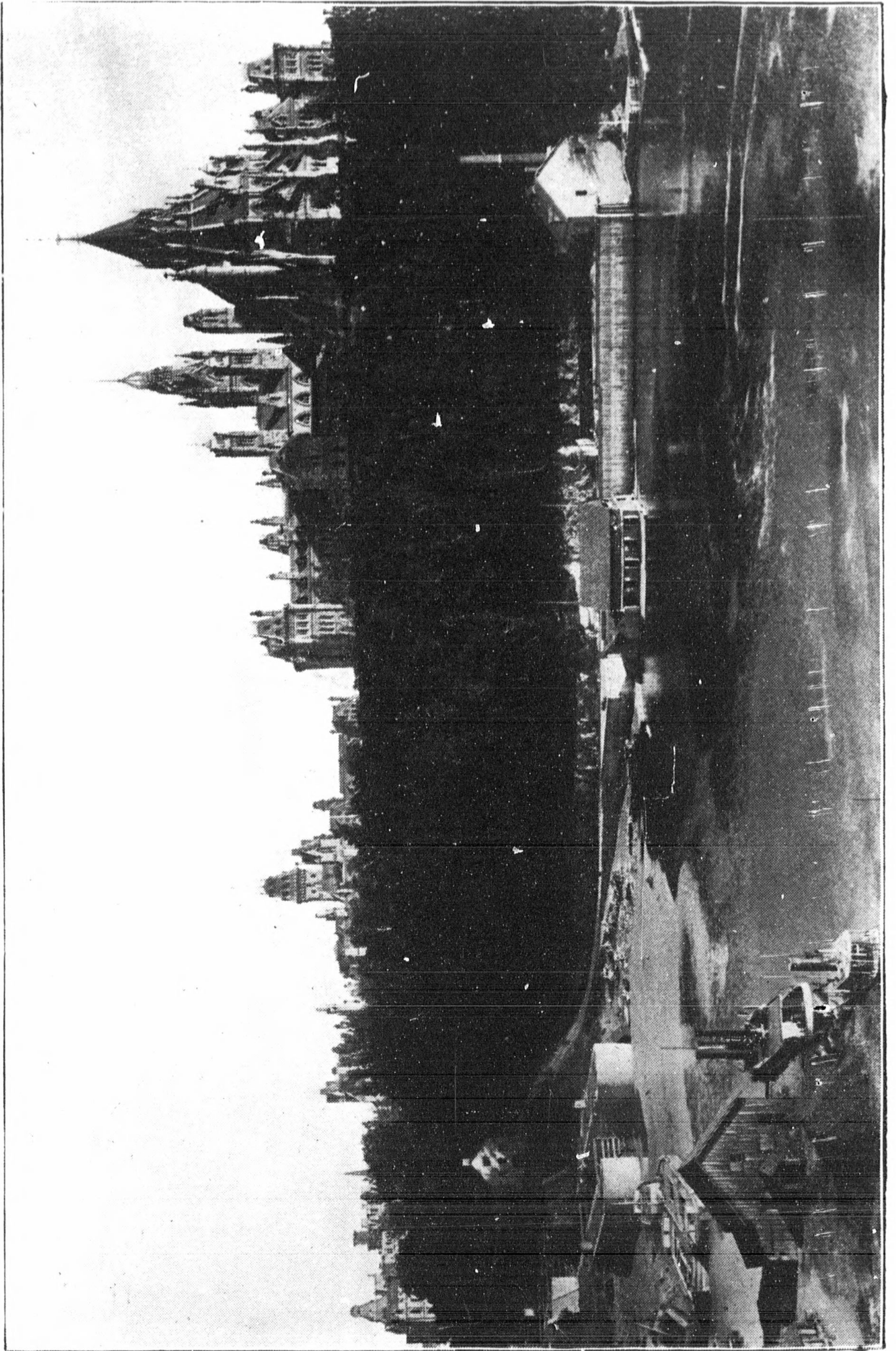
Distances.

Toronto to Penetanguishene, 102 miles; Penetanguishene to Parry Sound, 66 miles; Parry Sound to Ottawa, 260 miles; Ottawa to Montreal, 119 miles; Montreal to Toronto, 333 miles.

Mr. W. Keating, G.T.R., and Mr. J. E. Walsh, C.A.R., will conduct this excursion, and as the number will be limited to 250, those desirous of going will please notify the above gentlemen in time.







PARLIAMENT HILL, OTTAWA



THURSDAY, AUG. 26TH.

(F) Toronto to Kingston and Return.

This trip may be taken by rail or by boat. In connection with it the following invitation has been extended to the members of the British Association :

“A committee of the citizens of Kingston invite the visiting members of the British Association for the Advancement of Science to an excursion among the Thousand Islands of the St. Lawrence.

“The steamer will leave Kingston on Thursday, August 26th, at about 2.45 p.m., and will return about 10 p.m. Members wishing to avail themselves of this invitation will kindly register their names in the Secretary's Office at the earliest possible date. Information regarding the excursion may be obtained at the meeting from Prof. W. L. Goodwin, Chairman of the Kingston Committee.”

Rates.

Toronto to Kingston and return by G.T.R., \$2.25.

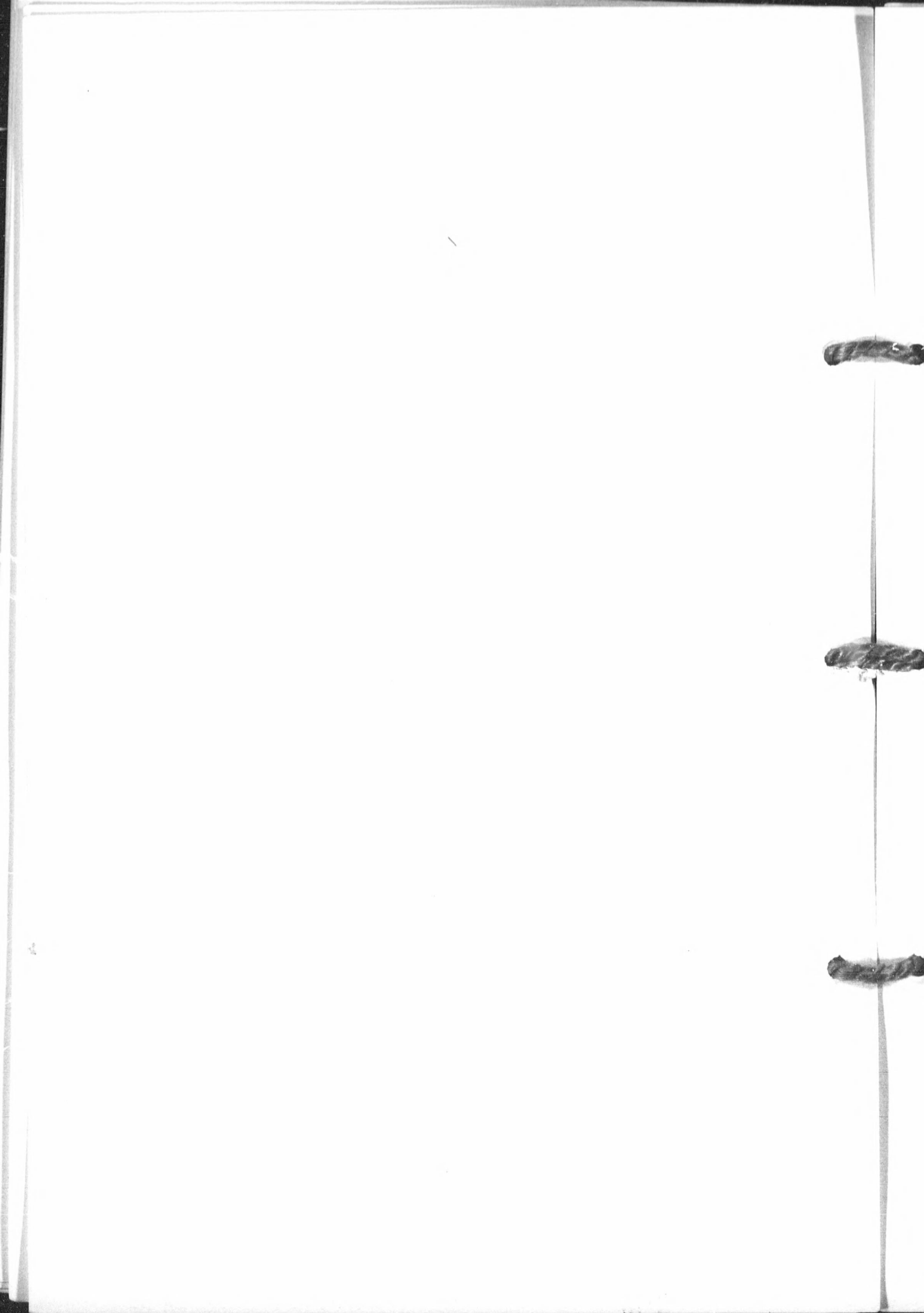
This rate will be obtainable only on the guarantee of 100 taking the excursion.

Time Table.

To take advantage of the above excursion it will be necessary to leave Toronto by the G.T.R. at 9 a.m.; this train reaches Kingston at 1.55 p.m.

Distance.

From Toronto to Kingston, 163 miles.



Other Excursions.

1. Toronto to Ottawa and return, all rail, C.P.R. \$5.00
2. Toronto to Ottawa and return, all rail, G.T.R., via
Coteau Landing 5.00
3. Toronto to Ottawa, C.P.R., steamer to Montreal, rail
to Toronto, C.P.R. 8.00

On this trip passengers take the C.P.R. to Ottawa. The steamer *Empress*, which leaves Ottawa every morning at 7.30 a.m. (Queen's Wharf), takes the passengers to Grenville, which is reached about 12.50 p.m. Thence from Grenville by the steamer *Sovereign*, which reaches Montreal at 6.30 p.m.

N.B.—Delegates wishing to take this route to attend the banquet given in Ottawa on Friday, August 27th, at 8 p.m., should leave Toronto by the C.P.R. either Thursday at 9 p.m. or on Friday at 9.10 a.m.

4. Toronto to Kingston, G.T.R. or C.P.R., steamer to Montreal,
rail to Toronto \$9.00
5. Toronto to Brockville or Prescott, steamer to Mon-
treal, rail to Toronto, G.T.R. 8.50
6. Toronto to Penetanguishene, steamer to Parry Sound,
rail to Maple Lake, stage to Port Cockburn,
steamer to Muskoka Wharf, rail to Toronto. 4.50

The above are all going August 26th, good to return up to September 1st.



Toronto Electric Street Railway.

Fare between any two points within city.....	5 cents.
Six tickets.....	25 "
From 6 to 7.30 a.m. and 5 to 6.30 p.m., eight tickets....	25 "

Trips for Single Fare.

1. Around the Belt Line, which runs over King St., Spadina Ave., Bloor St., Sherbourne St., a distance of 5½ miles in 45 minutes. Take *Belt Line* car.

2. For College Street West to High Park, take the *College St.* car going west at any point. Distance, about 5 miles.

3. For King St. East to Balmy Beach on Lake shore, take *King St.* car, going east. Distance, about 5 miles.

4. For King St. West to Humber Bay on Lake shore, take *King St.* car, going west. Distance, 4 miles.

N.B.—Bicycles are carried on all the street railways for one extra fare each.

Sunday car service stops at about 10 p.m.

Suburban Trips.

1. Take Toronto Street Railway to the Woodbine, *King St. East*, transfer to Scarboro' Electric Railway, which goes to Victoria Park.

Fare from Woodbine to Scarboro'..... 5 cents.

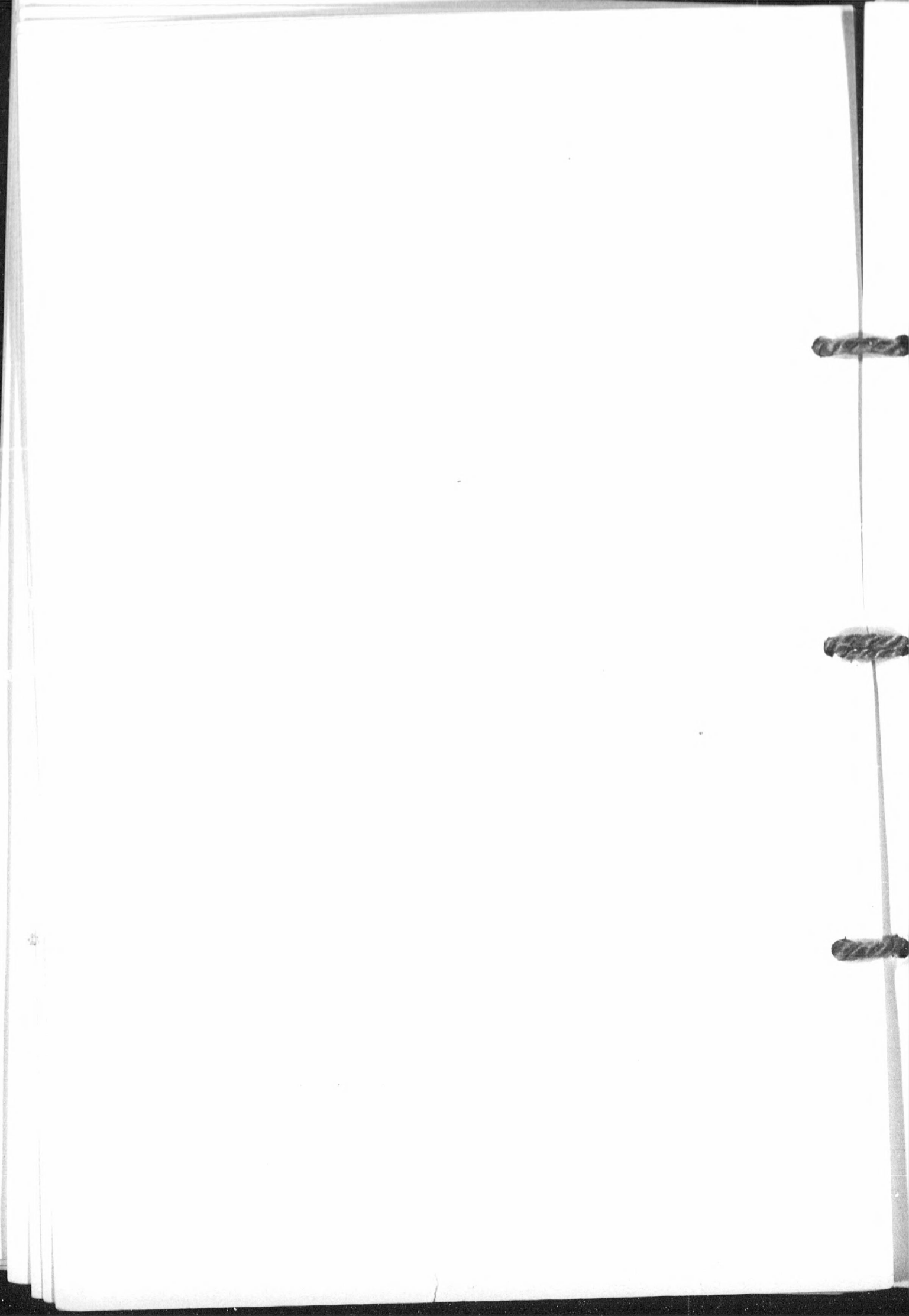
2. Take Street Railway to Sunnyside, Humber Bay. Transfer to Mimico Electric Road, which runs along the lake shore, close to the water's edge, about a mile and a half, and passes the Humber River, then Mimico, reaching Long Branch on the lake in about half an hour.

Fare from Sunnyside to Mimico and return... 10 cents.

 " " Long Branch " ... 15 "

3. Take Street Railway to North Toronto, then Metropolitan Electric Road to Richmond Hill, a distance of 14 miles.

Fare to Richmond Hill and return..... 25 cents.



Trip to Toronto Island.

Ferries run from the wharf at the foot of Yonge St. every twenty minutes throughout the day, Sundays included, until 10 p.m., to the Island opposite Toronto.

Fare to *Island Park* or *Hanlan's Point* and
return 10 cents.

To see the Island with its chief features, passengers should take the Ferry to *Island Park*; then, walking to the lake shore and turning westward, they will pass the Lighthouse and *Lakeside Home*; and then turning northward will reach *Hanlan's Point*. This walk is pleasant in cool weather, and takes about one hour.

Distance from Toronto to *Island Park* or *Hanlan's Point* is about one mile. Ferries cross in 10 to 15 minutes.

Trip to Trenton and Coe Hill Mines.

A special trip for the Geological Section is being arranged, to go to Trenton via G.T.R., thence to the Central Ontario Mines. The Central Ontario Railway will give free transportation over their road, with lunch and dinner, and the citizens of Trenton have arranged to tender the delegates a reception and banquet on the evening of their arrival.

The date of this excursion will be fixed at an early day, and those interested should apply to Mr. John D. Evans, who will be present during the meetings.



NOTES AS TO TICKETS.

The **Post Office** and **Telegraph Office** are in the West Corridor of the Main Building of Toronto University.

The **Reading** and **Writing Room** adjoin the Post Office.

Thos. Cook & Sons, the General Excursion Agents of the Association, have their Ticket Office in the Reading Room, where information as to Tours in all parts of Canada and the United States will be obtained.

Railway Certificates for general travel in Canada will be obtained on presentation of Membership Tickets at the Ticket Office in the Reading Room.

Railway Tickets and Sleeping Car Berths will be purchased at the Railway Offices :

Grand Trunk Railway, No. 1 King St. West; Mr. W. Keating, Agent.

Canadian Pacific Railway, No. 1, King St. East; Mr. C. E. McPherson, Agent.

Steamer Tickets will be obtained :

Niagara River Line, 72 Yonge St.

Hamilton Steamboat Co., Yonge St. Dock.

Richelieu & Ontario Navigation Co., No. 2, King St. East.

Thousand Islands and St. Lawrence Co. (American Line),
72 Yonge St.

SPECIAL EXCURSIONS.

Members are requested to fill up and leave their application form at the Reading Room as promptly as possible.

Tickets so applied for, will, if desired, be delivered at the Ticket Office in the Reading Room.

Tickets for the **Special Excursions** will be purchased for **Saturday, August 21—23 :**

A. 1, 2, 3, Niagara River Line Office, 72 Yonge St.

B. C., Grand Trunk Railway, 1 King St. West.

D., Canadian Pacific Railway, 1 King St. East.

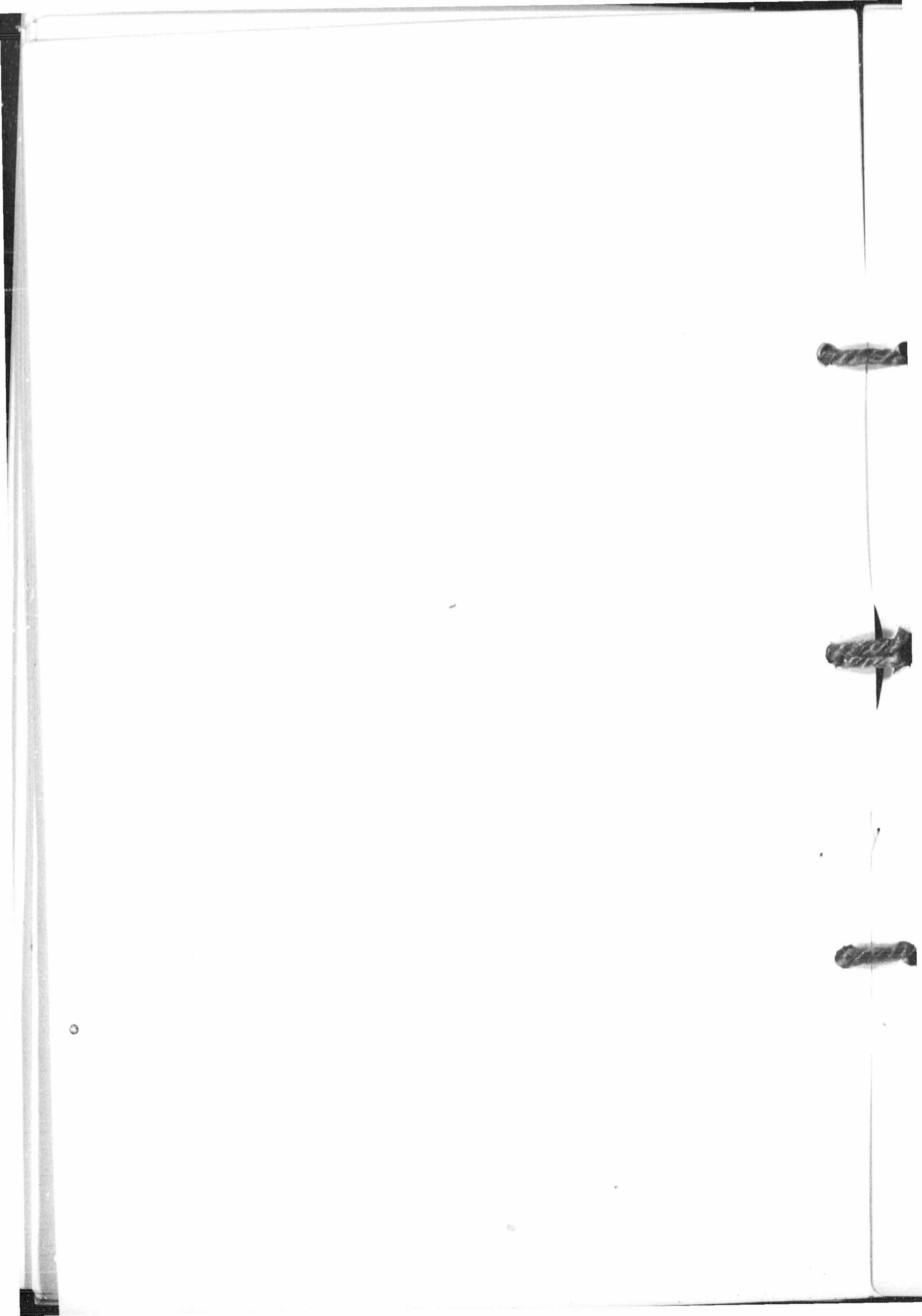
Grand Trunk Railway, 1 King St. West.

X., Canadian Pacific Railway, 1 King St. East.

Thursday, August 26 - September 1 :

E. F., Grand Trunk Railway, 1 King St. West.

Other Excursions.—At office of the Railway which the member may select as his route.



Facts About Toronto.

THE CITY OF TORONTO is situated upon the northern shore of Lake Ontario, on a plateau gently ascending north for a distance of three miles, where an altitude of about 220 feet is reached. It extends about eight miles along the lake, and is generally flat. The river Don flows through the eastern part of the City, and the river Humber lies immediately to the west of its western limit. The climate is not as extreme in winter as in some of the eastern Canadian cities, and in summer the heat is tempered by the grateful breezes which blow from off the cool waters of the lake. The area within the City limits is 10,391 acres, or 16.2 square miles.

Population	200,000
Miles of Streets	256
" of Water Mains	248
" of Sewers	228
" of Gas Mains	225
" of Underground Electric Conduit	120
" of Steam Railway Track.....	80
" of Electric Street Railway Track.....	85
Public School Attendance	28,000
Public School Teachers	600
Attendance at Universities and Colleges.....	6,000
Attendance at High Schools.....	1,000
High School Teachers	33
Churches in Toronto	182
Parks and Gardens, area.....	1,115 acres
Attendance at Industrial Exhibition in 1896	303,000

Postal Business, 1896.

Number of Letters Delivered by Carriers	16,825,756
" of Letters Posted at Toronto	15,639,572
" of Post Cards Posted at Toronto.....	4,257,988
" of Books, etc., Posted at Toronto	9,879,506



PRINTED BY
THE ARBUTHNOT BROS. COMPANY, LIMITED
TORONTO.

