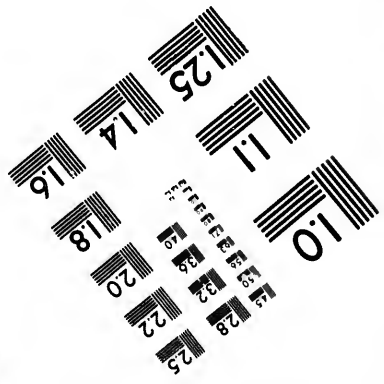
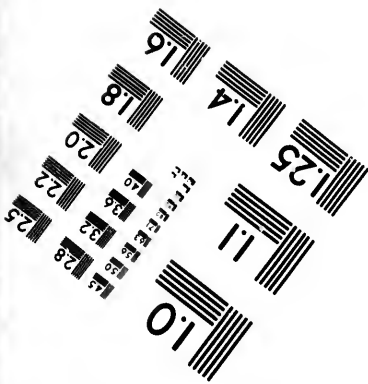
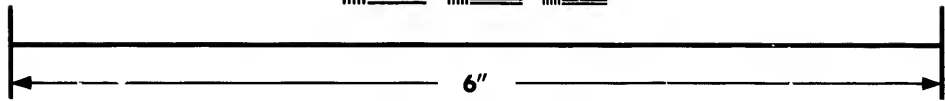
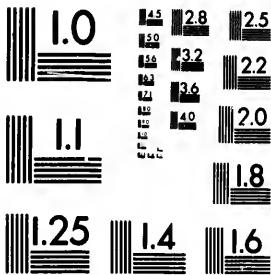


**IMAGE EVALUATION  
TEST TARGET (MT-3)**



**Photographic  
Sciences  
Corporation**

23 WEST MAIN STREET  
WEBSTER, N.Y. 14580  
(716) 872-4503

15  
12  
13  
14  
16  
18  
20  
22  
25

**CIHM/ICMH  
Microfiche  
Series.**

**CIHM/ICMH  
Collection de  
microfiches.**



**Canadian Institute for Historical Microreproductions / Institut canadien de microreproductions historiques**

11  
10  
12  
13  
14

**© 1987**

Technical and Bibliographic Notes/Notes techniques et bibliographiques

The Institute has attempted to obtain the best original copy available for filming. Features of this copy which may be bibliographically unique, which may alter any of the images in the reproduction, or which may significantly change the usual method of filming, are checked below.

L'Institut a microfilmé le meilleur exemplaire qu'il lui a été possible de se procurer. Les détails de cet exemplaire qui sont peut-être uniques du point de vue bibliographique, qui peuvent modifier une image reproduite, ou qui peuvent exiger une modification dans la méthode normale de filmage sont indiqués ci-dessous.

- Coloured covers/  
Couverture de couleur
- Covers damaged/  
Couverture endommagée
- Covers restored and/or laminated/  
Couverture restaurée et/ou pelliculée
- Cover title missing/  
Le titre de couverture manque
- Coloured maps/  
Cartes géographiques en couleur
- Coloured ink (i.e. other than blue or black)/  
Encre de couleur (i.e. autre que bleue ou noire)
- Coloured plates and/or illustrations/  
Planches et/ou illustrations en couleur
- Bound with other material/  
Relié avec d'autres documents
- Tight binding may cause shadows or distortion along interior margin/  
Le reliure serrée peut causer de l'ombre ou de la distorsion le long de la marge intérieure
- Blank leaves added during restoration may appear within the text. Whenever possible, these have been omitted from filming/  
Il se peut que certaines pages blanches ajoutées lors d'une restauration apparaissent dans le texte, mais, lorsque cela était possible, ces pages n'ont pas été filmées.
- Additional comments:/  
Commentaires supplémentaires:

- Coloured pages/  
Pages de couleur
- Pages damaged/  
Pages endommagées
- Pages restored and/or laminated/  
Pages restaurées et/ou pelliculées
- Pages discoloured, stained or foxed/  
Pages décolorées, tachetées ou piquées
- Pages detached/  
Pages détachées
- Showthrough/  
Transparence
- Quality of print varies/  
Qualité inégale de l'impression
- Includes supplementary material/  
Comprend du matériel supplémentaire
- Only edition available/  
Seule édition disponible
- Pages wholly or partially obscured by errata slips, tissues, etc., have been refilmed to ensure the best possible image/  
Les pages totalement ou partiellement obscurcies par un feuillet d'errata, une pelure, etc., ont été filmées à nouveau de façon à obtenir la meilleure image possible.

This item is filmed at the reduction ratio checked below/  
Ce document est filmé au taux de réduction indiqué ci-dessous.

10X	14X	18X	22X	26X	30X
<input type="checkbox"/>	<input type="checkbox"/>	<input type="checkbox"/>	<input checked="" type="checkbox"/>	<input type="checkbox"/>	<input type="checkbox"/>
12X	16X	20X	24X	28X	32X

The copy filmed here has been reproduced thanks to the generosity of:

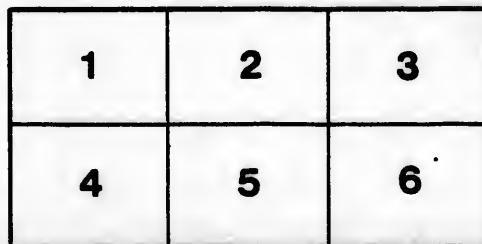
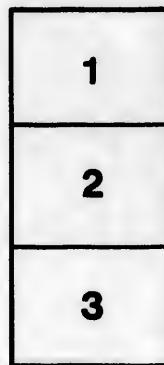
D. B. Weldon Library  
University of Western Ontario  
(Regional History Room)

The images appearing here are the best quality possible considering the condition and legibility of the original copy and in keeping with the filming contract specifications.

Original copies in printed paper covers are filmed beginning with the front cover and ending on the last page with a printed or illustrated impression, or the back cover when appropriate. All other original copies are filmed beginning on the first page with a printed or illustrated impression, and ending on the last page with a printed or illustrated impression.

The last recorded frame on each microfiche shall contain the symbol  $\rightarrow$  (meaning "CONTINUED"), or the symbol  $\nabla$  (meaning "END"), whichever applies.

Maps, plates, charts, etc., may be filmed at different reduction ratios. Those too large to be entirely included in one exposure are filmed beginning in the upper left hand corner, left to right and top to bottom, as many frames as required. The following diagrams illustrate the method:



L'exemplaire filmé fut reproduit grâce à la générosité de:

D. B. Weldon Library  
University of Western Ontario  
(Regional History Room)

Les images suivantes ont été reproduites avec le plus grand soin, compte tenu de la condition et de la netteté de l'exemplaire filmé, et en conformité avec les conditions du contrat de filmage.

Les exemplaires originaux dont la couverture en papier est imprimée sont filmés en commençant par le premier plat et en terminant soit par la dernière page qui comporte une empreinte d'impression ou d'illustration, soit par le second plat, selon le cas. Tous les autres exemplaires originaux sont filmés en commençant par la première page qui comporte une empreinte d'impression ou d'illustration et en terminant par la dernière page qui comporte une telle empreinte.

Un des symboles suivants apparaîtra sur la dernière image de chaque microfiche, selon le cas: le symbole  $\rightarrow$  signifie "A SUIVRE", le symbole  $\nabla$  signifie "FIN".

Les cartes, planches, tableaux, etc., peuvent être filmés à des taux de réduction différents. Lorsque le document est trop grand pour être reproduit en un seul cliché, il est filmé à partir de l'angle supérieur gauche, de gauche à droite, et de haut en bas, en prenant le nombre d'images nécessaire. Les diagrammes suivants illustrent la méthode.

rrata  
to

pelure,  
h à

32X

1896.

SEC. 2, S. C. 4.—The Sheriff shall, immediately on the receipt of his copies, cause one of them to be posted up in a conspicuous place in the Court House; the Clerk of the Peace, upon the receipt of his copies, shall cause one of them to be posted up in a conspicuous place in his office; every Public or Separate School Head Master or Mistress shall post one of his or her copies on the door of the school house; and every Post Master shall post up one of his copies in his Post Office.

Municipality of New York

MEMORIAL OF THE OFFICERS

- |                        |                   |
|------------------------|-------------------|
| 1. Crumlin.            | 13. Campbell.     |
| 2. Dorchester Station. | 14. Hamilton.     |
| 3. Thamesford.         | 15. Darwent.      |
| 4. London.             | 16. Aven.         |
| 5. London East.        | 17. Belmont.      |
| 6. Nilestown.          | 18. St Thomas.    |
| 7. Evelyn.             | 19. Ealing.       |
| 8. Mossley.            | 20. Pond Mills.   |
| 9. Putnam.             | 21. Banner.       |
| 10. Ingersoll.         | 22. Ealing.       |
| 11. Gladstone.         | 23. Wilton Grove. |
| 12. Verchoyie.         | 24. Clinton.      |

# VOTERS' LIST, 1896.

## Municipality of North Dorchester.

### POLLING SUB-DIVISION No. 1.

Comprising Lots Nos. 1 to 9, both inclusive, in Concessions Nos. 1, 2, 3 and 4, north of the River Thames.

PART I.—Persons entitled to vote at both Municipal elections and elections to the Legislative Assembly :

No. on Roll.	Name.	Title.	M. F.	Cop.	Lot.	P. O.
j 169	Armour, Archibald .....	f	m f	3	e pt 5	2
313	Arms, George .....	t	m f	4	pt 9	2
j 116	Bell, William .....	f	m f	2	n half 7	2
j 168	Barry, David .....	f	m f	3	w pt 6	2
j 177	Baker, Frank .....	t	m f	3	s pt 7	2
j 297	Burke, John .....	f	m f	4	pt 9	2
j 11	Carroll, William .....	t	m f	1	pt 1	1
130	Creighton, George A .....	f s	m f	2	s half 4	6
131	Creighton, Charles W. ....	f s	m f	2	s half 4	6
j 136	Crockett, James .....	f	m f	2	s w qr 3	6
j 145	Couch, John .....	t	m f	3	s w pt 1	6
146	Couch, Nelson R. ....	f s	m f	3	s w pt 1	6
159	Cartwright, Harvey .....	f	m f	3	n w pt 1	6
j 126	Dickey, Jacob .....	f	m f	2	s half 5	2
127	Dickey, Robert .....	f	m f	2	s half 5	2
128	Dickey, Frederick .....	f s	m f	2	s half 5	2
292	Dunn, John .....	f	m f	4	pt 9	2
313	Deo, Charles .....	t	m f	4	pt 9	2
j 324	Dale, William D. ....	f	m f	4	e pt 8	2
110	Elliott, John .....	f	m f	2	pt 9	2
125	English, Thomas .....	f	m f	2	n w qr 5	1
j 6	Fredine, John .....	f	m f	1	pt 1	1
109	Farquhar, John .....	t	m f	4	pt 9	2
j 176	Ford, J. J. ....	f	m f	3	n half 7	2
j 326	Fredine, Carl .....	t	m f	4	e pt 7	2

## TOWNSHIP OF NORTH DORCHESTER.

No. on Roll.	Name.	Title.	M. F.	Con.	Lot.	P. O.
j 174	Gee, Philip.....	f	m f	3	n e pt 6	2
175	Gee, Albert.....	f s	m f	3	n e pt 6	2
299	Graham, Angus.....	f	m f	4	pt 9	2
9	Hazlett, William.....	f	m f	1	pt 1	1
j 42	Henderson, Samuel.....	f	m f	1	w pt 9	1
j 156	Henry, Anthony.....	f	m f	3	n pt 2	6
157	Henry, Jas. Ambrose.....	f s	m f	3	n pt 2	6
j 182	Hunt, John W.....	f	m f	3	n half 8	2
j 287	Hunter, Frank.....	f	m f	4	n e pt 9	2
290	Hunter, John.....	f	m f	4	pt 9	2
313	Hunt, John.....	f	m f	4	pt 9	2
314	Hunt, Charles H.....	f	m f	4	pt 9	2
35	Isaac, Emanuel.....	f	m f	1	n half 6	1
121	Irwin, Thomas.....	f	m f	2	n half 6	2
122	Irwin, Andrew A.....	f s	m f	2	n half 6	2
j 124	Irwin, Frederick.....	f	m f	2	n e qr 5	2
117	Johnston, Andrew.....	t	m f	2	s w qr.7	2
j 144	Kirby, George.....	t	m f	2	s half 1	1
j 153	Kilborn, John.....	f	m f	3	pt s e pt 2	6
154	Kilborn, Isaac.....	f	m f	3	s e pt 2	6
155	Kilborn, Walter.....	f	m f	3	s e pt 2	6
164	Kilborn, William.....	f	m f	3	nw pt 5	2
j 17	Mossop, Hugh J.....	f	m f	1	s half 2	1
149	Marsh, William.....	f	m f	3	n e pt 1	6
150	Marsh, John.....	f s	m f	3	n e pt 1	6
151	Marsh Richard.....	f s	m f	3	n e pt 1	6
295	Monk, L. D.....	f	m t	4	pt 9	2
308	Mossop, John.....	f	m f	4	pt 9	2
315	Mullin, John.....	f	m f	4	pt 9	2
12	McCaveny, Thomas.....	f	m f	1	pt 1	1
j 29	McKenzie, R. A. B.....	f	m f	1	n e qr 5	1
j 160	McIntyre, Daniel.....	f	m f	3	n pt 4	6
113	Nichol, James.....	f	m f	2	s half 8	2
j 114	Nichol, Andrew.....	f	m f	2	s e qr 7	2
161	Nelson, Nelson.....	t	m f	3	n pt 4	2



POLLING SUB-DIVISION No. 1.

3

No. on Roll.	Name.	Title.	M. F.	Con.	Lot.	P. O.
j 108	Oliver, William	f	m f	2	n half 9	2
134	Oliver, Beattie	f s	m f	2	n e qr 3	1
135	Oliver, Adam	f s	m f	2	n e qr 3	1
j 139	Oliver, James	f	m f	2	n pt 2	1
7	Phelan, Thomas	f	m f	1	pt 1	1
34	Parker, Alexander	f	m f	1	s half 6	1
j 35	Parker, John	f	m f	1	s half 6	1
j 132	Parker, Edward	f	m f	2	n e qr 4	1
j 140	Parkinson, John	f	m f	2	s half n half 2	1
j 141	Parkinson, Thomas	f	m f	2	n half 1	1
142	Parkinson, Thomas J.	f s	m f	2	n half 1	1
143	Parkinson, William J.	f s	m f	2	n half 1	1
j 298	Patterson, George	f	m f	4	pt 9	2
13	Richard, Phillip B.	f	m f	1	pt 1	1
j 117	Rogers, James	f	m f	2	pt s half 9	2
112	Rogers, James O.	f s	m f	2	pt 9	2
j 119	Robertson, John	f	m f	2	s half 6	2
j 180	Rogers, Ephraim	f	m f	3	s e qr 8	2
j 189	Robins, Peter	f	m f	3	e pt 9	2
306	Richmond, William	f	m f	4	pt 9	2
307	Redmond, Rev. R.	t	m f	4	pt 9	2
312	Rolph, James	f	m f	4	pt 6	2
2	Smith, Thomas	f	m f	1	n half s half 1	1
3	Smith, Charles	f	m f	1	n half s half 1	1
4	Snow, Thomas	t	m f	1	pt 1	1
10	Shuttleworth, George	t	m f	1	pt 1	1
j 23	Stothers, James	f	m f	1	pt 4	1
j 24	Stothers, Joseph	f	m f	2	n w pt 4	1
27	Stothers, Robert J.	f	m f	1	n half 4	1
j 158	Swart, Lawyer	f	m f	3	pt 2 & 3	6
170	Shaw, Edward T.	t	m f	3	s pt 6	2
j 171	Shaw, Lyman	t	m f	3	s pt 6	2
j 172	Shaw, William H.	t	m f	3	s pt 6	2
j 173	Shaw, Richard	t	m f	4	pt 7	2
j 187	Slaght, Abram	f	m f	3	w pt e half 9	2
j 188	Slaght, Thomas	f	m f	3	w pt e half 9	2
303	Shaw, John	f	m f	4	pt 9	2
309	Strathdee, George	f	m f	4	pt 9	2
j 323	Swart, Rossel	f	m f	4	w pt 8	2
325	Shaw, William	t	m f	4	pt 7	2
5	Taylor, John	f	m f	1	pt 1	1
j 43	Temple, Robert J.	t	m f	1	e pt 9	1

## TOWNSHIP OF NORTH DORCHESTER.

No. on Roll.	Name.	Title.	M. F.	Con.	Lot.	P. O.
14	Warden, James	f	m f	1	n half 2	1
15	Warden, William C	f s	m f	1	n half 2	1
16	Warden, Ernest	f s	m f	1	n half 2	1
18	Wood, Daniel	f	m f	1	n w pt 3	1
19	Wood, James	f	m f	1	n w pt 3	1
22	Weir, William J.	f	m f	1	s half 3	1
26	Weir, Joseph H.	f	m f	1	n half 4	1
28	Weir, Joseph C.	f	m f	1	s half 4	1
30	Weir, William B	f	m f	1	s half 5	1
36	Wilson, David	f	m f	1	7	1
38	Wilson, William M.	f s	m f	1	7	1
115	Weir, James H.	f	m f	2	n half 8	1
137	Weir, John	f	m f	2	n w qr 3	1
138	Weir, David	f	m f	2	n w qr 3	1
163	Wilson, William T.	f	m f	2	s pt 3 & 4	2
294	Wilson, Joseph	f	m f	4	pt 9	2
318	Williams, George	f	m f	4	pt 9	2
319	Wilson, James	f	m f	4	pt 9	2
179	Young, Warner	t	m f	3	s w qr 8	2
184	Young, Abram, sen.	f	m f	3	w half 9	2
185	Young, David	f s	m f	3	w half 9	2
186	Young, Abram jr	f s	m f	3	w half 9	2

## PART 2.—Persons entitled to vote at Municipal elections only :

1	Byers, James	f		1	s pt 1	1
240	Buchanan, James A.	f		4	pt 9	10
118	Clegg, Mrs.	f		2	s w qr 7	4
129	Creighton, Mrs.	f		2	s half 4	6
178	Cartwright, Sidney	f		3	s pt 7	
411	Creighton, John	f		2	s half 1	6
8	Dreaney, Robert	f		1	pt 1	4
320	Egan, Joseph	f		4	pt 9	15
288	Hunter, Sarah	f		4	pt 9	4
296	Hunter, Mrs.	f		4	pt 9	2
20	Logan, Edward	f		1	n e pt 3	1
21	Logan, John F.	f		1	n e pt 3	1
301	Lester, Mrs.	t		4	pt 9	2
	Lea, William	f		3	pt 1	

POLLING SUB-DIVISION No. 1.

5

No. on Roll.	Name.	Title.	M. F.	Con.	Lot.	P. O.
429	O'Dell, F. A.....	f		3	s w pt 2	6
322	Oakley, Mrs.....	f		4	pt 9	2
133	Oliver, Mrs.....	f		2	n e pt 3	1
148	Parkinson, Samuel.....	f		3	s e pt 1	22
408	Piggott, Henry.....	f		4	5	6
165	Short, Thomas.....	f		3	s w pt 5	4
169	Shaw, Mrs.....	f		3	s e pt 6	2
147	Showler, George.....	f		3	s w pt 1	4
310	Shaw, Sidney.....	f		4	pt 9	2
300	Turnbull, Mrs.....	f		4	pt 9	
37	Wilson, Mrs.....	f		1	7	1
39	Weir, Mrs.....	f		1	8	1
293	Worth, Mrs.....	f		4	pt 9	

PART III.—Persons entitled to vote at the elections of the Legislative Assembly only:

305	Ansell, George .....	m f	4	9	2
33	Beckley, John.....	m f	1	6	1
291	Blandon, Henry .....	m f	4	9	2
181	Crockett, George .....	m f	3	8	2
41	Ford, William .....	m f	1	8	1
183	Hunter, Stephen .....	m f	3	8	2
166	Kilborn, Edward .....	m f	3	5	2
120	Milton, William .....	m f	2	6	2
162	Munroe, D.....	m f	3	4	6
317	Maule, Arthur.....	m f	4	9	2
311	Nelson, Andrew M .....	m f	4	9	2
152	Proctor, William .....	m f	3	2	6
25	Stothers, William.....	m f	1	4	1
	Smith, Philip.....	m f	2	14	
40	Talbott, William .....	m f	1	8	1
44	Temple, William .....	m f	1	9	1
123	Veale, Frederick .....	m f	2	6	2
31	Wright, Joseph.....	m f	1	5	1

## TOWNSHIP OF NORTH DORCHESTER.

## POLLING SUB-DIVISION No. 2,

Comprising Lots Nos. 10 to 18, both inclusive, in Concessions Nos. 1, 2, 3, 4 and 5, north of the River Thames.

PART I.—Persons entitled to vote at both Municipal elections and elections to the Legislative Assembly :

No. on Roll.	Name.	Title.	M. F.	Con.	Lot.	P. O.
267	Andrews, Joshua .....	t	m f	4	pt 10	2
284	Aylsworth, D. P. ....	f	m f	4	pt 10	2
j 57	Bott, Raywood.....	t	m f	1	s pt 11	2
j 58	Bott, John .....	t	m f	1	s pt 11	2
j 72	Banks, Richard. ....	t	m f	1	s half 12	3
196	Barker, Esau.....	f	m f	3	swpt 12	2
198	Beverly, John ....	f	m f	3	se pt 12	2
j 205	Barker, James .....	t	m f	3	s half 14	2
j 206	Barker, Henry.....	t	m f	3	s half 14	2
253	Burke, Edward .....	f	m f	4	n pt 11	2
345	Buchanan, Daniel.....	f	m f	5	17	2
86	Counter, Richard .....	f	m f	2	se pt 18	3
j 212	Calvert, John.....	t	m f	3	w half 17	3
213	Calvert, David.....	f s	m f	3	w half 17	3
264	Crow, George .....	f	m f	4	pt 10	2
268	Carson, Andrew .....	t	m f	4	pt 10	2
272	Collins, William.....	f	m f	4	pt 10	2
j 277	Capstick, William.....	f	m f	4	pt 10	2
278	Chittick, George .....	f	m f	4	pt 10	2
282	Copeland, Charles E.....	t	m f	4	pt 10	2
j 285	Chittick, William H., jr....	t	m f	4	pt 10	2
338	Carroll, John .....	t	m f	5	n w pt 16	2
j 339	Carroll, Denis .....	f	m f	5	s pt 16	2
340	Carroll James .....	f s	m f	5	s pt 16	2
101	Durand, John.....	f	m f	2	s half 12	1
102	Durand, George D. ....	f s	m f	2	s half 12	2
j 194	Daw, Henry.....	t	m f	3	s half 11	2
j 242	Duffield, Robert.....	f	m f	4	e half 14	2
251	Duckworth, Lawrence ....	f	m f	4	pt 11	2
j 228	Edwards, Charles .....	f	m f	4	s half 18	21
229	English, John.....	f	m f	4	s half 17	21



## TOWNSHIP OF NORTH DORCHESTER.

No. on Roll.	Name.	Title.	M. F.	Con.	Lot.	P. O.
j 83	McMurray, Samuel.....	f	m f	2	n half 18	3
85	McMurray, William .....	f s	m f	2	n half 18	3
92	McKay, Remember .....	f	m f	2	n half 16	3
93	McKay, George.....	f s	m f	2	n half 16	3
j 199	McFarlane, Thomas.....	f	m f	3	n half 12	2
j 217	McFarlane, Robert.....	f	m f	3	n e qr 17	3
233	McKay, Donald.....	f	m f	4	s w pt 16	2
234	McKay, John.....	f s	m f	4	s w pt 16	2
235	McKay, William A.....	f s	m f	4	s w pt 16	2
260	McMillan, Thomas.....	f	m f	4	pt 11	2
261	McMillan, David.....	t	m f	4	pt 11	2
j 280	McCann, E. A .....	f	m f	4	pt 10	2
281	McCann, John.....	f	m f	4	pt 10	2
j 203	Neely, Robert .....	f	m f	3	pt 13	2
215	Neely, Thomas.....	f	m f	3	s e pt 17	2
j 88	O'Neil, Robert F.....	t	m f	2	w half 17	3
209	Ovens, William .....	f s	m f	3	n w qr. 16	3
j 211	Ovens, Richard .....	f	m f	3	e half 16	2
j 238	Oliver, Samuel.....	f	m f	4	n w pt 16	2
	Ovens, William.....	t	m f	4	pt. 9	2
65	Paterson, Thomas .....	f	m f	1	pt 13 & 14	3
66	Paterson, George .....	f s	m f	1	pt 16	3
j 72	Payne, William H.....	f	m f	1	pt s w qr 16	3
74	Payne, Isaac.....	f	m f	1	n w qr 16	3
j 77	Paterson, George.....	f	m f	1	s half 17	3
78	Paterson, Thomas H. ....	f s	m f	1	17	3
79	Paterson, Gilbert T.....	f s	m f	1	17	3
j 247	Pinegar, Richard.....	f	m f	4	n pt 12	2
j 248	Pinegar, Luther .....	f	m f	4	n pt 12	2
346	Powell, Edward .....	t	m f	5	18	21
j 99	Riddick, John L.....	t	m f	2	s half 14	2
j 220	Ross, David .....	f	m f	3	s e pt 18	3
j 221	Ross, Robert.....	f	m f	3	s e pt 18	3
236	Ross, James.....	f	m f	4	n e qr 16	2
237	Ross, Adam W.....	f s	m f	4	n e qr 16	2
j 239	Rollston, George.....	t	m f	4	s half 15	2
	Rollston, Charles .....	f s	m f	4	s half 15	2
250	Ross, Donald.....	f	m f	4	pt 11	2
j 344	Richard, Herbert .....	f	m f	5	17	2

POLLING SUB-DIVISION No. 2.

9

Lot. P. O.  
 half 18 3  
 half 18 3  
 half 16 3  
 half 16 3  
 half 12 2  
 qr-17 3  
 pt 16 2  
 pt 16 2  
 pt 16 2  
 pt 11 2  
 pt 11 2  
 pt 10 2  
 pt 10 2

No. on Roll.	Name.	Title.	M. F.	Con.	Lot.	P. O.
80	Spice, Thomas	f	m f	1	n half 18	3
90	St Clair, Marshall	f s	m f	2	s e qr 16	3
225	Sutherland, Robert	f	m f	4	n half 18	21
226	Sutherland, William	f	m f	4	n half 18	21
245	Shields, James H.	f	m f	4	pt 13	2
254	Sutherland, Robert	f	m f	4	pt 11	2
266	Spring, Peter	f	m f	4	pt 10	2
270	Smith, Melvin	f	m f	4	pt 10	2
329	Smith, Sidney A.	f	m f	5	pt 12	2
331	Sutherland, John	f	m f	5	e pt 13	2
332	Sutherland, Alexander	f	m f	5	w half 14	2
334	Strong, Thomas	t	m f	5	e pt 14	2
337	Sutherland, Daniel	f	m f	5	pt e half 14	2

pt 13 2  
 pt 17 2  
 f 17 3  
 . 16 3  
 f 16 2  
 t 16 2  
 ot.9 2

45	Talbott, F. B.	f	m f	1	n half 10	1
46	Talbott, F. E. L.	f s	m f	1	n half 10	1
45	Talbott, Arthur	f s	m f	1	n half 10	1
75	Taylor, Samuel	f	m f	1	e half 16	3
204	Thompson, John	f	m f	3	n half 14	2
218	Torrens, William	f	m f	3	n w qr 18	3
219	Torrens, James	f s	m f	3	n w qr 18	3
273	Tallack, Mark	f	m f	4	pt 10	2

14 3  
 16 3  
 16 3  
 16 3  
 17 3  
 17 3  
 17 3  
 12 2  
 2 2  
 8 21  
 4 2  
 3 3  
 3 3  
 2 2  
 2 2  
 2 2  
 2 2  
 2 2

48	Woods, Samuel	f	m f	1	s half 10	1
49	Woods, Joseph	f	m f	2	s half 10	1
76	Wallace, Meredith	f	m f	2	n half 17	3
100	Wilson, Samuel	f	m f	2	s half 13	2
244	Walker, John	t	m f	4	w half 14	2
252	Webster, Frederick	f	m f	4	pt 11	2
257	Wilson, John	f	m f	4	pt 11	2
258	Wilson, William	f	m f	4	pt 11	2
265	Webster, John	f	m f	4	pt 10	2
274	Wilson, William E.	f	m f	4	pt 10	2
246	Williamson, John L.	t	m f	4	pt 10	2
275	Wilson, James	f	m f	4	pt 10	2
327	Webster, Thomas	f	m f	5	pt 12	2
335	Wallace, Edward	f	m f	5	pt e half 14	2

## PART II.—Persons entitled to vote at Municipal elections only:

No. on Roll.	Name.	Title.	M. F.	Con.	Lot.	P. O.
216	Brock, Mrs. Rebecca .....	f		4	n e qr 17	2
269	Budden, Stephen .....	t		4	pt 10	2
56	Clipperton, Joseph .....	f		1	n w pt 11	1
286	Chittick, William H., sen..	f		4	pt 10	2
359	Chittick, William J. ....	t		3	s half 10	2
193	Daw, Mrs .....	t		3	s half 11	2
197	Hunter, Mrs .....	f		3	c pt s half 12	2
61	Isaac, John R. ....	f		1	12	4
431	Jackson, William .....	f		3	s half 11	6
222	Leslie, Benjah .....	f		3	n e qr 18	3
223	Leslie, John .....	f		3	n e qr 18	3
224	Leslie, Thomas .....	f		3	n e qr 18	3
341	Loughlin, Thomas .....	f		5	pt 16	21
342	Loughlin, William .....	f		5	pt 16	21
64	Morrison, Mrs .....	f		1	n w qr 13	3
98	Miller, J. C. ....	f		2	n half 14	18
106	Marr, Robert .....	f		2	n half 11	20
214	Morrison, Mrs. ....	f		4	w half 17	3
374	Mitchell, William .....	f		4	pt 11	2
96	McCarthy, N. C. ....	f		2	w half 15	3
391	McCann, Ezekiel .....	f		4	pt 10	2
378	Neely, George .....	f		4	pt 10	2
208	Ovens, Mrs .....	f		3	n w qr 16	3
255	Ovens, Mrs .....	f		4	pt 11	2
207	Routledge, Robert .....	f		3	s half 14	5



POLLING SUB-DIVISION No. 2.

11

No. on Roll.	Name	Title.	M. F.	Con.	Lot.	P. O.
89	St Clair, M.		f	2	s e qr 16	3
249	Sage, Nelson		f	4	12	4
262	Stevenson, William		f	4	pt 11	6
59	Taylor, William		f	1	s pt 11	1
63	Tamblyn, Charles		f	1	s half 12	4
50	Woods, Allen		f	2	n half 10	1
60	Wilkinson, George		f	2	n e pt 13	7
372	Wade, George		f	4	pt 11	2
343	Walker, Miss L.		f	5	pt 11	21

PART III.—Persons entitled to vote at the elections of the Legislative Assembly: only:

200	Alexander, George		m f	3	13	2
201	Alexander, Samuel		m f	3	13	2
202	Alexander, Stephen		m f	4	13	2
243	Ayling, William		m f	4	14	2
283	Baker, Richard		m f	4	10	2
97	Crow, William		m f	2	15	3
227	Collins, William		m f	4	18	2
279	Crandall, William		m f	4	10	2
333	Cox, John		m f	5	14	2
51	Johnston, Ola		m f	2	10	1
271	McKintosh, W		m f	4	10	2
210	Smith, Jacob		m f	3	11	2
	Smith, Philip		m f	2	14	2
91	Torrance, Abram		m f	2	16	3
336	Wallace, Cornelius		m f	5	14	2

## POLLING SUB-DIVISION NO. 3.

Comprising Lots Nos. A, B, and 1 to 12, both inclusive, in Concessions A, B and No 1, south of the River Thames.

PART I.—Persons entitled to vote at both Municipal elections and elections to the Legislative Assembly.

No.	Name.	Title.	M. F.	Con.	Lot.	P. O.
586	Arms, Thomas .....	f	m f	1	s e p t 11	8
j 480	Barry, Gerald .....	f	m f	B	pt 11 & 12	2
481	Barry, William A .....	f s	m f	B	pt 11 & 12	2
482	Barry, Jasper C .....	f s	m f	B	pt 11 & 12	2
j 483	Bennett, George .....	t	m f	B	. s p t 11	2
505	Bolding, Richard .....	f	m f	B	pt 4	9
j 506	Bennett, Stephen .....	f	m f	B	pt 4	9
514	Brompton, Jabez .....	f	m f	B	pt 4	9
519	Brown, Thomas H. ....	f	m f	B	pt 4	9
j 535	Butler, Judson .....	f	m f	1	n e p t A	9
j 549	Beacham, James .....	f	m f	1	w half 2	9
j 573	Budden, George .....	f	m f	1	e half 9	9
587	Beacham, William .....	f	m f	1	s w p t 11	8
j 349	Collins, John .....	t	m f	A	s p t 1	9
j 355	Capstick, William E .....	f	m f	A	w p t 10	2
488	Capstick, Jonathan .....	f	m f	B	n p t 10	2
j 489	Capstick, Albert .....	f	m f	B	s w p t 10	2
j 500	Clifford, Frederick .....	f	m f	B	n e p t 5	9
j 501	Clifford, Robert .....	f	m f	B	s p t 5	9
511	Clifford, Thomas .....	t	m f	B	pt 4	9
522	Collins, Frederick J .....	f	m f	B	pt 3	9
j 523	Couch, Joseph .....	f	m f	B	w p t 3	9
524	Couch, Frederick .....	f s	m f	B	w p t 3	9
j 525	Choate, Charles .....	f	m f	B	n p t 1 & 2	9
j 552	Collins, Hamilton .....	f	m f	1	. e half 3	9
j 554	Collins, John .....	t	m f	1	n p t w half 3	9
555	Collins, William .....	f	m f	1	n p t w half 3	9
556	Collins, George .....	f s	m f	1	n p t w half 3	9
j 557	Collins, David .....	t	m f	1	s p t w p t 3	9
j 558	Collins, Albert .....	f s	m f	1	s p t 3	9
j 562	Couch, William .....	t	m f	1	w half 5	9
j 566	Connor, Thomas .....	t	m f	1	s e q r 7	9
j 567	Campbell, Archibald .....	f	m f	1	w half 9	8
j 494	Dundass, Richard .....	f	m f	B	n p t 6	9
j 529	Dundass, John C .....	f	m f	B	pt A & B	9

POLLING SUB-DIVISION No. 3.

13

No. on Roll.	Name.	Title.	M. F.	Con.	Lot.	P. O.
530	Dundass, Nathaniel .....	f s	m f	B	A & B	9
j 543	Dundass, Albert F. ....	t	m f	l	w half 1	9
j 546	Dundass, William P. ....	f	m f	l	e half 2	9
588	Dakins, Marsh. ....	f	m f	l	sw pt 12	8
j 565	Empey, Andrew. ....	f	m f	l	n pt 6	9
479	Foreman, John. ....	f	m f	B	pt 12	2
j 486	Fiffield, Hiram. ....	f	m f	B	s e pt-10	2
487	Fiffield, William A. ....	t	m f	l	n e qr 7	9
j 490	Fulkerson, Joseph. ....	f	m f	B	n w pt 9.	2
j 513	Fralic, George. ....	f	m f	B	pt 4	9
j 542	Faulds, Wesley. ....	f	m f	l	e half 1	9
353	Glendillen, William. ....	f	m f	A	w pt 8	2
354	Godwin, Benjamin. ....	f	m f	A	e pt 10	2
356	Hampton, Richard. ....	f	m f	A	11 & 12	2
357	Hampton, Richard J. ....	f s	m f	A	11 & 12	2
521	Hanham, Elijah. ....	f	m f	B	pt 4	9
j 537	Huntley, Thomas. ....	f	m f	l	n pt A & B	9
538	Huntley George. ....	f s	m f	l	n pt A & B	9
j 561	Hutchinson, John. ....	t	m f	l	e half 5	9
j 347	Irwin, George. ....	f	m f	A	e pt 1	9
j 508	Magee, Charles A. ....	f	m f	B	pt 4	9
j 540	Magee, Isaac. ....	t	m f	l	n w pt B	9
j 576	Morrison, William. ....	f	m f	l	s w pt 10	8
577	Morrison, Charles. ....	f s	m f	l	pt 10	8
j 502	McNiven, Angus. ....	f	m f	B	pt 4	9
j 503	McNiven, Hugh. ....	f	m f	B	pt 4	9
515	McKenzie, Donald. ....	f	m f	B	pt 4	9
j 516	McKenzie, James. ....	f	m f	B	pt 4	9
j 478	Pyatt, George. ....	t	m f	B	pt 12	2
512	Perley, Allan. ....	f	m f	B	pt 4	9
j 559	Pirle, James. ....	f	m f	l	4	9
j 560	Pirle, Frank. ....	f	m f	l	4	9

## TOWNSHIP OF NORTH DORCHESTER.

No. on Roll.	Name.	Title.	M. F.	Con.	Lot.	P. O.
j 563	Rowse, James H .....	f	m f	l	n half s half 6	9
j 485	Sharen, William .....	t	m f	B	n e pt 11	2
j 492	Small, Charles .....	f	m f	B	s pt 8	9
493	Small, Arthur .....	f s	m f	B	s pt 7	9
498	Stinebaugh, Peter .....	f	m f	B	pt 5	9
j 499	Sharp, Isafah .....	f	m f	B	pt 5 & 6	9
510	Skinner, William .....	f	m f	B	pt 4	9
520	Stobridge, Lawrence .....	t	m f	B	pt 4	9
j 539	Shannon, John .....	f	m f	l	s e pt A	9
j 567	Sherin, Richard .....	f	m f	l	w half 7	9
589	Treherne, William .....	t	m f	l	pt 12	8
507	Uglow, William .....	f	m f	B	pt 4	9
550	Vannatter, John .....	t	m f	B	e half 9	9
j 351	Wright, Samuel .....	t	m f	A	2	9
j 517	Wallis, Richard .....	f	m f	B	pt 4	9
j 568	Wallis, Walter .....	f	m f	l	e half 8	9
569	Wallis, George W. ....	f s	m f	l	e half 8	9
570	Wallis, William .....	f s	m f	l	e half 8	9
j 571	Wallis, Kidman .....	f	m f	l	w half 8	9
572	Wallis, Charles .....	f s	m f	l	w half 8	9

## PART II.—Persons entitled to vote at Municipal elections only :

701	Allison, William .....	f		l	s e pt 6	9
581	Anderson, John .....	f		l	pt 11	15
689	Armes, Frederick .....	t		l	s e qr 11	8
350	Bowman William .....	f		A	s pt 1	10
484	Bennett, Thomas .....	f		B	s pt 11	18
536	Butler, Mrs .....	f		l	n e pt A	9
691	Barr, Samuel .....	f		l n w pt e half	10	8
692	Barr, Allen .....	f		l n w pt e half	10	8
579	Blair, Alexander .....	f		l	pt 11	15
580	Beattie, William .....	f		l	pt 11	23
583	Beacon, John .....	f		l	pt 11	24
685	Beacham, William .....	f		l	pt 11	8

POLLING SUB-DIVISION No. 3.

15

Lot.	P. O.	No. on Roll.	Name.	Title.	M. F.	Con.	Lot,	P. O.
half 6	9	527	Currie, John.....	f		B	s pt 1 & 2	10
		553	Collins, James.....	f		1	e half 3	10
pt 11	2		Coates, William, sen.....	f		2	s e pt 12	8
s pt 8	9		Coates, William.....	f		1	s e pt 12	8
s pt 7	9							
pt 5	9	495	Dundass, James.....	t		B	n pt 6	10
5 & 6	9	496	Dundass, William.....	t		B	n pt 6	10
pt 4	9	497	Dundass, T. B.....	f		B	n pt 6	
pt 4	9	544	Dundass, William C.....	f		1	w half 1	10
pt A	9	545	Dundass, Mrs. Ann.....	f		1	w half 1	10
half 7	9	547	Dundass, Henry.....	f		1	e half 2	4
		548	Dundass, Mrs. J. N.....	f		1	e half 2	9
			Dibb, Daniel R.....	f		1	pt 11	17
pt 12	8							
		574	Eagan, James.....	f		1	e half 9	
pt 4	9	551	Gould, William H.....	f		B	e half 9	4
		532	Halpin, Matthew.....	t		B	n pt A & B	9
half 9	9	533	Halpin, Patrick.....	f		B	n pt A & B	9
		584	Harkness, Adam.....	f		1	pt 11	17
		772	Jelly, William.....	f		1	e pt 10	8
2	9	765	Lane, Thomas.....	f		1	pt 12	8
pt 4	9	674	Leslie, Simon.....	t		1	pt 12	8
half 8	9	541	Magee, Mrs.....	f		1	w pt B	8
half 8	9	352	McNiven, Robert.....	f		A	2	10
half 8	9		Rowse, James C.....	f		1	6	13
half 8	9	578	Ray, William.....	f		1	pt 11	20
half 8	9	491	Swabb, William.....	f		B	s w pt 9	4
			Thompson, William.....	f		1	pt 11	15
			Topham, Peter.....	f		1	pt 12	8

PART III.—Persons entitled to vote at the elections of the Legislative Assembly only:

pt 1	10	526	Berdan, Elias.....	m f		B	2	9
pt 11	18	528	Couch, Henry.....	m f		B	2	9
pt A	9	564	Flaherty, James.....	m f		1	6	9
pt 10	8	531	Huntley, Arthur.....	m f		B	A	9
pt 10	8	509	Magee, Robert A.....	m f		B	4	9
pt 11	15	504	Smith, Duncan.....	m f		B	4	9
pt 11	23							
pt 11	24							
pt 11	8							

## POLLING SUB-DIVISION NO. 4,

Comprising Lots 13 to 24, both inclusive, in Concessions A, B and No. 1, south of the River Thames.

PART I.—Persons entitled to vote at both Municipal elections and elections to the Legislative Assembly :

No. on Roll.	Name.	Title.	M. F.	Con.	Lot	P.O.
j 604	Aylsworth William N. ....	f	m f	l	n e qr 17	2
j 605	Aylsworth, Henry W. ....	t	m f	l	n w qr 17	2
373	Banks, John .....	t	m f	A	pt 17	2
376	Baker, Jesse .....	f	m f	A	pt 17	2
387	Bevens, William .....	t	m f	A	pt 18	2
428	Barnard, John .....	f	m f	A	pt 24	6
432	Barnard, Luther .....	f	m f	B	n pt s half 24	6
433	Barnard, Albert .....	f s	m f	B	n pt s half 24	6
j 473	Banks, William .....	f	m f	B	c pt 13	2
j 474	Banks, Osborne .....	f	m f	B	s e qr 13	2
j 608	Bell, John .....	f	m f	l	n w pt 18	2
j 622	Border, William .....	t	m f	l	w half 22	6
j 629	Brownlee, Andrew. ....	f	m f	l	n half 24	6
630	Brownlee, John .....	f s	m f	l	n half 24	6
631	Brownlee, William A. ....	f s	m f	l	n half 24	6
j 358	Chittick, George .....	f	m f	A	pt 16	2
j 359	Chittick, William J. ....	f	m f	A	pt 17	2
379	Collar, David .....	t	m f	A	pt 17	2
411	Creighton, John .....	f	m f	A	pt 23	6
462	Cave, William, sen. ....	f	m f	B	n pt 16	2
463	Cave, William, jr. ....	f s	m f	B	n pt 16	2
j 468	Cartwright, James P. ....	f	m f	B	14	2
j 612	Cartwright, William A. ....	t	m f	l	w half 19	2
j 615	Court, Samuel .....	f	m f	l	s w qr 20	15
616	Court, William C .....	f s	m f	l	s w qr 20	15
632	Court, William .....	f	m f	l	s w pt 24	6
633	Court, John .....	f	m f	l	s w pt 24	6
j 369	Drake, William .....	t	m f	A	pt 17	2
j 402	Denton, John .....	t	m f	A	e pt 21	2
422	Duncan, William .....	t	m f	A	pt 24	6
j 611	Dakon, William .....	f	m f	l	pt. n half 18	2
j 435	Edwards, Walter .....	f	m f	B	n pt 22	6

POLLING SUB-DIVISION No. 4.

17

No. on Roll.	Name.	Title.	M. F.	Con.	Lot.	P. O.
j 399	Finch, Andrew R.....	f	m f	A	19	2
j 413	Gilmour, John.....	f	m f	A	n pt 23	6
j 414	Gilmour, Andrew.....	f	m f	B	s pt 23	6
j 421	Groat, James.....	f	m f	A	pt 24	6
j 436	Gilmour, David.....	f	m f	B	c pt 22	6
j 458	Guest, Henry.....	t	m f	B	s pt 17	2
j 618	Gilmour, James.....	f	m f	l	n half 21	6
j 619	Gilmour, Andrew.....	f s	m f	l	n half 21	6
j 361	Hunter, Thomas.....	f	m f	A	pt 17	2
j 380	Harding, Frederick.....	f	m f	A	pt 17	2
j 419	Harvey, Kennedy.....	t	m f	A	n w pt 24	6
j 438	Harris, George.....	f	m f	B	s w qr 21	6
j 439	Harris, Robert.....	f	m f	B	s & c pt 21	2
j 440	Harris, Thomas.....	f	m f	B	s & c pt 21	2
j 456	Hartle, George.....	f	m f	B	n e qr 18	2
j 457	Hayes, James.....	f	m f	B	pt n w qr 17	2
j 624	Harris, Henry.....	f	m f	l	s pt 22	15
383	Johnston, William.....	f	m f	A	pt 17	2
405	James, A. J.....	f	m f	A	e pt 22	6
406	James, David A.....	f s	m f	A	e pt 22	6
j 431	Jackson, William.....	f	m f	B	c pt 24	6
j 447	Judge, James.....	t	m f	B	n e pt 19	2
j 627	Jackson, David.....	f	m f	l	n half 23	6
j 628	Jackson, John.....	f	m f	l	n pt s half 24	6
j 416	Knott, John, sen.....	t	m f	B	c pt 24	6
430	Knott, John, jr.....	f	m f	B	c pt 24	6
j 448	Lane, James H.....	f	m f	B	s pt 19	2
609	Lane, Walter B.....	f	m f	l	s half 18	2
610	Lane, N. Jerome.....	f	m f	l	s e qr 19	2
360	Morrish, Charles.....	f	m f	A	pt 17	2
364	Mitchell, Joseph.....	f	m f	A	pt 17	2
370	Merrill, Chauncey.....	t	m f	A	pt 17	2
374	Mitchell, William.....	f	m f	A	pt 17	2
400	Maybee, O. M.....	f	m f	A	pt 20	2
j 613	Madole, Burton.....	f	m f	l	e pt 20	2
j 621	Morehouse, Charles.....	f	m f	l	n e pt 22	6

B and No. 1,  
and elections

Lot P.O.  
e qr 17 2  
w qr 17 2  
  
pt 17 2  
pt 17 2  
pt 18 2  
pt 24 6  
half 24 6  
half 24 6  
c pt 13 2  
e qr 13 2  
v pt 18 2  
half 22 6  
half 24 6  
half 24 6  
half 24 6  
  
pt 16 2  
pt 17 2  
pt 17 2  
pt 23 6  
pt 16 2  
pt 16 2  
14 2  
lf 19 2  
r 20 15  
r 20 15  
t 24 6  
t 24 6  
  
17 2  
21 2  
24 6  
18 2  
  
22 6

## TOWNSHIP OF NORTH DORCHESTER.

No. on Roll.	Name.	Title.	M. F.	Con.	Lot.	P. O.
	389 McNiven, John .....	f	m f	A	pt 18	2
	391 McCann, Ezekiel .....	f	m f	A	pt 18	2
j	461 McDonald, James.....	f	m f	B	n e pt 17	2
	465 McLean, Robert.....	f	m f	B	w half 15	2
j	378 Neely, George.....	f	m f	A	pt 17	2
j	395 O'Neil, William H.....	f	m f	A	pt 17	2
	396 Partlo, H. W.....	t	m f	A	pt 18	2
j	403 Patterson, James.....	f	m f	A	pt 21	2
j	404 Phillimore, John.....	t	m f	A	w pt 21	2
j	408 Piggott, Henry, sen.....	f	m f	A	pt 23	6
	409 Piggott, Henry, jr.....	f s	m f	A	pt 23	6
	424 Puckridge, R. W.....	t	m f	A	pt 24	6
j	437 Rolph, Solomon.....	t	m f	B	s w pt 22	6
	362 Sweet, William.....	f	m f	A	pt 17	2
	363 Sweet, Nathan.....	f	m f	A	pt 17	2
	365 Swartout, George.....	f	m f	A	pt 17	2
	366 Smith, William.....	f	m f	A	pt 17	2
	368 Sweet, Sheldon.....	f	m f	A	pt 17	2
	386 Sweet, Orlow.....	f	m f	A	pt 17	2
	425 Swift, George.....	f	m f	A	pt 24	6
j	442 Smith, Aaron.....	f	m f	B	n w pt 20	2
	443 Stronghill, Byron.....	f	m f	B	n pt 20	2
	450 Smith, Alfred.....	f	m f	B	s pt 18	2
	451 Smith, Richard C.....	f s	m f	B	s pt 18	2
	453 Smith, William.....	f	m f	B	pt 18	2
j	475 Sharp, John.....	f	m f	B	pt 13	2
j	477 Steele, John.....	f	m f	B	pt 13	2
j	600 Strathdee, James.....	f	m f	l	s pt 15	2
	602 Smith, Lewis.....	f	m f	l	pt 16	2
	603 Smith, Delbert.....	f	m f	l	n pt 16	2
	392 Talbott, William C.....	t	m f	A	pt 18	2
j	445 Temple, James.....	f	m f	B	n pt 19	2
	446 Temple, Wesley.....	f s	m f	B	n pt 19	2
j	449 Terpin, James.....	f	m f	B	c pt 19	2
j	625 Thompson, William.....	f	m f	l	s e qr 23	15
j	626 Thompson, Andrew.....	f	m f	l	s w qr 23	15



POLLING SUB-DIVISION No. 4.

19

No. on Roll.	Name.	Title.	M. F.	Con.	Lot.	P. O.
302	Williams, William.....	t	m f	A	pt 17	2
J 372	Wade, George.....	f	m f	A	pt 17	2
377	Walker, Francis.....	f	m f	A	pt 17	2
418	Wallace, William.....	t	m f	A	pt 24	6
J 466	Wallace, Frank.....	t	m f	B	e half 15	2
J 617	Webber, Robert.....	f	m f	l	s w qr 21	6
	Willer, Hugh.....	f	m f	B	pt 20	2

PART II.—Persons entitled to vote at Municipal elections only :

606	Aylsworth, Richard.....	f		l	n w qr 17	4
388	Bell, Miss.....	f		A	pt 18	2
	Banks, William G.....	f		l	s half 13	8
62	Banks, Richard.....	f		l	s half 13	3
598	Byrne, John.....	f		l	pt 15	15
597	Carrothers, Paul.....	f		l	pt 15	17
623	Cowan, Hugh.....	f		l	w half 22	15
292	Dunn, John.....	f		B	s half 17	2
865	Dunn, John P.....	f		l	pt 12 & 13	10
590	Evans, John P.....	t		l	pt n half 13	4
427	Greenfield, George.....	f		A	pt 24	6
454	Graham, George.....	f		B	pt 18	7
592	Hobbs, T. S.....	t		l	pt n half 13	4
	Hartle, William.....	t		l	s e pt 14	8
426	Jackson, Mrs.....	t		A	pt 24	6
	Johnston, George.....	f		l	pt 14	9
	Johnston, Richard.....	f		l	pt 14	9
593	Masuret, M. ....	t		l	pt 13	4
467	McLean, Hugh.....	f		A	e half 15	10
	McMurray, Edward.....	f		A	pt 17	11
595	McKerlie, William.....	f		l	n e pt 14	
596	McKerlie, Charles.....	t		l	n e pt 14	19
	McNiven, Angus.....	f		l	s w pt 16	2
	McNiven, James.....	f		l	s w pt 16	2
429	O'Dell, F. A.....	f		B	pt 24	6

## TOWNSHIP OF NORTH DORCHESTER.

No. on Roll.	Name.	Title.	M. F.	Con.	Lot.	P. O.
141	Parkinson, Thomas.....	f		A	n w pt 24	1
420	Pearson, Mrs.....	f		A	pt 24	6
397	Partlo, William.....	f		A	pt 18	10
371	Richardson, John.....	f		A	pt 17	10
	Rossiter, Armon.....	f		A	pt 18	13
390	Rossiter, Mrs.....	t		A	pt 18	2
417	Rowatt, Thomas.....	f		A	n e pt 24	4
312	Rolph, James.....	f		B	s w pt 22	2
375	Snively, Mrs.....	f		A	pt 17	2
394	Smith, John.....	f		A	pt 18	4
594	Sage, Willard.....	f		l	pt n half 13	6
266	Spring, Peter.....	f		l	s e qr 16	2
591	Trebilcock, Fred T.....	t		l	pt 13	4
634	Thompson, Robert.....	l		!	pt s half 24	15
381	Weldon, Thomas H.....	f		A	pt 17	4
294	Wilson, Joseph.....	f		B	c pt 24	2

PART III.—Persons entitled to vote at the elections of the Legislative Assembly only:

367	Alexander, Abram.....	m f	A	16	2
362	Collar, Frank.....	m f	A	17	2
393	Coulter, Rev. J.....	m f	A	18	2
464	Collar, John.....	m f	B	16	2
470	Griffith, George.....	m f	B	14	2
476	Hayes, Thomas.....	m f	B	13	2
	Holt, John.....	m f	B	20	2
384	Johnston, Joseph.....	m f	A	17	2
385	Johnston, George.....	m f	A	17	2
415	Last, Frederick.....	m f	A	22	6
460	Madole, David.....	m f	B	16	2
398	McDonald, Alexander.....	m f	A	18	2
407	McMullen, George.....	m f	A	23	6
455	Nelson, William J.....	m f	B	18	2
401	O'Neil, William.....	m f	A	20	2
444	Smith, Thomas.....	m f	B	20	2
452	Smith, Anthony.....	m f	B	18	2
607	Smith, Edward.....	m f	l	18	2
620	Smithers, George.....	m f	l	21	6
601	Todd, William.....	m f	l	16	2
410	Vanvollicum, Frank.....	m f	A	23	6
469	Weldon, Thomas H.....	m f	B	14	2
471	Walker, William.....	m f	B	14	2
472	Whittaker, William.....	m f	B	14	2

POLLING SUB DIVISION No. 5.

21

POLLING SUB-DIVISION No. 5,

Comprising Lots Nos. 19 to 24, both inclusive, in Concessions Nos. 2 3, 4, 5 and 6, south of the River Thames.

PART I.—Persons entitled to vote at both Municipal elections and elections to the Legislative Assembly :

Lot.	P. O.
w pt 24	1
pt 24	6
pt 18	10
pt 17	10
pt 18	13
pt 18	2
e pt 24	4
w pt 22	2

pt 17	2
pt 18	4
half 13	6
e qr 16	2
pt 13	4
half 24	15
pt 17	4
c pt 24	2

the Legislative

16	2
17	2
18	2
16	2
14	2
13	2
20	2
17	2
17	2
22	6
16	2
18	2
23	6
18	2
20	2
20	2
18	2
18	2
21	6
16	2
23	6
14	2
14	2
14	2

No. on Roll.	Name.	Title.	M. F.	Con.	Lot.	P. O.
j 999	Abbott, John.....	f	m f	5	w hf 20	11
j 639	Beattie, John P.....	f	m f	2	s pt 23	15
644	Beattie, Edward.....	f	m f	2	21	15
j 645	Beattie, James.....	f	m f	2	21	15
j 821	Beattie, Charles.....	f	m f	3	n hf 24	15
828	Black, Duncan.....	t	m f	4	s pt 24	17
830	Barton, George.....	f	m f	4	n hf 23	15
j 831	Barton, Warren.....	f	m f	4	n w qr 22	15
j 1000	Brown, Hugh.....	f	m f	5	s hf 21	17
1001	Brown, Neil.....	f	m f	5	s hf 21	17
j 1002	Brown, Archibald.....	f	m f	5	n hf 21	11
j 1008	Brown, William.....	f	m f	5	e hf 23	17
1009	Brown, Dugal.....	f	m f	5	e hf 23	17
j 1010	Brown, Archibald.....	f	m f	5	pt 24	17
1150	Blanshard, John.....	t	m f	6	pt 24	17
j 1071	Brown, Alexander.....	f	m f	6	pt 24	17
j 657	Campbell, Angus.....	t	m f	2	e hf 20	2
838	Campbell, William, sen...	f	m f	4	n hf & s e pt 20	11
j 839	Campbell, William, jun...	f	m f	4	n hf 20	11
j 840	Campbell, Daniel.....	f	m f	4	n hf 20	11
j 841	Campbell, Colin.....	f	m f	4	n hf 20	11
j 1014	Collard, Marshall.....	f	m f	5	n pt 24	17
1036	Currie, Rev. John.....	t	m f	6	pt 24	17
1037	Cheyne, William.....	f	m f	6	pt 24	17
1062	Cornel, Dugald.....	f	m f	6	pt 24	17
j 635	Dibb, John G.....	t	m f	2	s hf 24	15
j 812	Dodds, Andrew.....	f	m f	4	e hf 22	15
j 814	Dibb, James.....	f	m f	3	s w qr 22	15
824	Dibb, John.....	f	m f	4	s hf n hf 24	15
j 825	Dibb, Richard.....	f	m f	4	n hf s hf 24	17
j 826	Dibb, Daniel R.....	f	m f	4	s w qr 22	17
j 1018	Dyer, William.....	f	m f	6	pt 24	17
1032	Donald, James.....	t	m f	6	pt 24	17
j 1031	Eden, Charles R.....	f	m f	6	pt 24	17

	No. on Roll.	Name.	Title.	M. F.	Con.	Lot.	P. O.
j	832	Finch, John.....	f	m f	4	s hf 23	11
j	836	Farquhar, Frederick.....	t	m f	4	s hf 21	11
j	837	Farquhar, Robert.....	t	m f	4	s hf 21	11
j	1073	Fitchett, Freeman.....	f	m f	6	e hf 23	17
j	1076	Fitchett, James.....	f	m f	6	e hf 22	17
	1077	Groat, Edward.....	f	m f	6	pt 21	17
	996	Hazen, Mark.....	f	m f	5	pt 19	11
j	648	Jeffery, Andrew.....	f	m f	2	e hf 20	15
j	844	Jackson, Henry.....	f	m f	4	s pt 19	11
	845	Jackson, Victor.....	f s	m f	4	s pt 19	11
	846	Jackson, Samuel.....	f s	m f	4	s pt 19	11
	1034	Jackson, Rev. Thomas....	t	m f	6	pt 24	17
	847	Lavine, Frank.....	f	m f	4	pt 19	11
j	992	Marsh, Elgin.....	f	m f	5	pt 19	11
	993	Marsh, Lewis.....	f s	m f	5	pt 19	11
j	1003	Moore, William.....	f	m f	5	n e pt 22	11
	1025	Moore, William.....	f	m f	6	pt 24	17
	1029	Mildrum, J. A.....	f	m f	6	pt 24	17
	1030	Manning, Gabriel.....	f	m f	6	pt 24	17
	1033	Mohr, Philip.....	t	m f	6	pt 24	17
j	1083	Marsh, W. R.....	f	m f	6	n e pt 19	11
	1039	Mohr, William.....	f	m f	6	pt 24	17
j	649	McNiven, Angus.....	f	m f	2	19	2
j	651	McNiven, James.....	f	m f	2	19	2
j	803	McCallum, Angus A.....	f	m f	3	19	11
j	805	McCallum, Duncan.....	f	m f	3	e hf 20	11
	806	McCallum, Solomon.....	f s	m f	3	e hf 20	11
j	807	McCallum, Neil N.....	f	m f	3	w hf 20	11
j	810	McVicar, Archibald.....	f	m f	3	s hf 21	15
j	816	McLelan, John.....	f	m f	3	s w pt 23	15
j	817	McLelan, James.....	f	m f	3	s e pt 24	15
	829	McLelan, James.....	f	m f	4	n e pt 24	15
j	833	McVicar, John.....	f	m f	4	n e qr 22	15

POLLING SUB-DIVISION No. 5.

23

Lot. P. O.  
 hf 23 11  
 hf 21 11  
 hf 21 11  
 hf 23 17  
 hf 22 17  
  
 pt 21 17  
  
 pt 19 11  
  
 hf 20 15  
 pt 19 11  
 pt 19 11  
 pt 19 11  
 pt 24 17  
  
 pt 19 11  
  
 pt 19 11  
 pt 19 11  
 pt 22 11  
 pt 24 17  
 pt 24 17  
 pt 24 17  
 pt 19 11  
 pt 24 17  
  
 19 2  
 19 2  
 19 11  
 f 20 11  
 hf 20 11  
 f 20 11  
 f 21 15  
 t 23 15  
 t 24 15  
 t 24 15  
 r 22 15

No. on Roll.	Name.	Title.	M. F.	Con.	Lot	P.O.
j 834	McCallum, Angus .....	f	m f	4	n w qr 21	11
j 835	McCallum, Neil .....	f	m f	4	n e qr 21	11
990	McMurray, Levi.....	f	m f	5	pt 18 & 19	11
j 1020	McGrath, John .....	f	m f	6	pt 24	17
1023	McPhail, Archibald.....	f	m f	6	pt 24	17
j 1006	Orr, J. Wesley.....	f	m f	5	s w qr 22	17
636	Pasmore, George.....	f	m f	2	n pt 23	15
637	Pasmore, Phillip.....	f s	m f	2	n pt 23	15
809	Pickle, Wilmot.....	f	m f	3	n hf 21	15
994	Pyatt, James.....	t	m f	5	pt 19	11
j 1024	Potts, Joseph.....	f	m f	6	pt 24	17
j 998	Rogers, Edward.....	f	m f	5	n e qr 20	11
j 1005	Rogers, Albert.....	f	m f	5	n w pt 22	11
1035	Racey, Rev. Geo. W.....	t	m f	6	pt 24	17
j 815	Shields, Charles.....	f	m f	3	n pt 23	15
j 823	Sanderson, Samuel.....	f	m f	4	n w pt 24	15
j 841	Swales, Bartholomew....	f	m f	4	n pt 19	11
848	Spring, David.....	t	m f	4	pt 19	11
1017	Shields, James.....	f	m f	5	s w pt 24	17
1019	Skelding, Charles.....	f	m f	6	pt 24	17
j 1026	Strachan, John .....	f	m f	6	pt 24	17
1052	Stewart, Alexander.....	f	m f	6	pt 24	17
1078	Shain, James .....	f	m f	6	s pt 20	11
j 634	Thompson, Robert.....	f	m f	2	n pt 24	15
641	Thompson, William, sen..	f	m f	2	w hf 22	15
j 642	Thompson, William, jun...	f	m f	2	w hf 22	15
643	Thompson, George.....	f s	m f	2	w hf 22	15
j 666	Thompson, David .....	f	m f	2	w hf 20	15
j 813	Thompson, James .....	f	m f	3	n w qr 22	15
843	Topham, John H.....	f	m f	4	pt 19	11
997	Tooley, Richard.....	f	m f	5	s pt 19	14
j 1065	Taylor, Colin .....	f	m f	6	pt 20	17
j 1084	Taylor, David.....	f	m f	6	pt 19	14
j 1015	Venning, A Wesley.....	f	m f	6	pt's qr 24	17

TOWNSHIP OF NORTH DORCHESTER.

No. on Roll.	Name.	Title.	M. F.	Con.	Lot.	P. O.
818	Walker, David, sen.....	f	m f	3	s w pt 24	15
j 819	Walker, David, jun.....	f	m f	3	s w pt 24	15
j 820	Walker, Samuel.....	f	m f	3	s w pt 24	15
j 827	Willsie, Joseph.....	f	m f	4	s pt 24	15
1045	Weldon, John H.....	t	m f	6	pt 24	17
1048	Waun, William.....	t	m f	6	pt 24	17
1051	White, William.....	f	m f	6	pt 24	17
1070	Willsie, Merritt.....	f	m f	6	n pt 24	17
j 1079	York, Hiram.....	f	m f	6	n pt 20	11
j 1080	York, Augustus.....	f	m f	6	n w pt 19	11
1081	York, Luther L.....	f s	m f	6	n w pt 19	11

PART II.—Persons entitled to vote at Municipal elections only:

1063	Abbott, Mrs.....	f		6	pt 24	..
1012	Booth, Mrs.....	f		5	c pt 24	17
1028	Brown, Neil J.....	f		6	pt 24	6
1049	Bain, George.....	f		6	pt 24	17
1072	Brown, Duncan.....	f		6	w hf 23	..
1038	Barrows, Chancey.....	f		6	pt 24	4
1011	Collard, William.....	f		5	pt n hf s ht 24	17
1066	Campbell, Daniel.....	f		6	pt 24	17
109	Farquhar, John.....	f		4	s hf 21	2
1067	Ferguson, Mrs.....	f		6	pt 24	..
1060	Hall, Miss Alice.....	f		6	pt 24	17
1064	Henry, William.....	f		6	pt 24	17
1047	Kennedy, Miss Catherine..	f		6	pt 24	17
1057	Luton, Mrs.....	t		6	pt 24	17
638	Manning, Mrs.....	f		2	s hf n hf 24	15
995	Marsh, Mrs.....	f		5	pt 17	11

POLLING SUB-DIVISION No. 5.

25

No. on Roll.	Name.	Title.	M. F.	Con.	Lot.	P. O.
808	McCallum, Hugh.....	f		3	w hf 20	11
811	McVicar, Mrs.....	f		3	s hf 21	15
1055	McPherson, Robert.....	f		6	pt 24	17
1056	McPherson, John.....	f		6	pt 24	17
1059	McCallum, Hugh.....	f		6	pt 24	4
1068	McInnes, Angus.....	f		6	pt 24	17
1061	Nugent, William T.....	f		6	pt 24	17
1021	Strachan, Thomas W.....	f		6	pt 24	17
1022	Strachan, Stewart.....	f		6	pt 24	17
1043	Sinclair, Mrs.....	f		6	pt 24	17
1085	Taylor, John.....	f		6	pt 24	17
1017	Venning, Andrew.....	f		5	pt s hf 24	17
1041	Willisie, Miss Matilda.....	f		6	pt 24	17
1042	Willisie, Miss Hannah.....	f		6	pt 24	17
1046	Weldon, Joseph.....	f		6	pt 24	15
1075	Willisie, George W.....	f		6	w hf 22	17

PART III.—Persons entitled to vote at the elections of the Legislative Assembly only:

804	Chivers, Robert.....	m f		3	19	15
1004	Connor, James.....	m f		5	22	15
1058	Fawcett, William.....	m f		6	24	17
798	Grece, Charles.....	m f		5	24	17
1074	Higgs, John.....	m f		6	23	17
1082	Hazen, Jasper.....	m f		6	19	11
822	Langford, Thomas.....	m f		3	24	15
1040	Mohr, Frederick.....	m f		6	24	17
991	McMurray, Roy.....	m f		5	19	11
640	Pearce, William.....	m f		2	23	15
1053	Stewart, Angus.....	m f		6	24	17
1044	Sinclair, Archibald.....	m f		6	24	17
1085	Taylor, Joseph.....	m f		6	19	14
1069	Winegarden, Timothy.....	m f		6	24	17

## POLLING SUB-DIVISION NO. 6.

Comprising Lots Nos. 13 to 18, both inclusive, in Concessions Nos. 2, 3, 4, 5 and 6, south of the River Thames.

PART I.—Persons entitled to vote at both Municipal elections and elections to the Legislative Assembly.

No. on Roll.	Name.	Title.	M. F.	Con.	Lot.	P. O.
j 981	Abbott, Edwin .....	f	m f	5	s hf 16	14
1089	Abbott, William .....	f	m f	6	n hf 18	11
1090	Abbott, Charles .....	f s	m f	6	n hf 18	11
1091	Abbott, Alford .....	f s	m f	6	n hf 18	11
668	Banks, William J. ....	f	m f	2	n e qr 13	8
792	Bronskill, William J. ....	f s	m f	3	s e pt 17	8
793	Bronskill, Robert .....	f s	m f	3	s e pt 17	8
794	Bronskill, Thomas .....	f s	m f	3	s e pt 17	8
j 802	Brodie, George B. ....	f	m f	3	pt 18	11
851	Brodie, Alexander A. ....	f	m f	4	pt 18	11
852	Brodie, James .....	f s	m f	4	pt 18	11
j 970	Brook, William .....	f	m f	5	pt 13	14
j 1086	Brown, John .....	f	m f	6	pt 18	11
j 665	Campbell, Daniel .....	f	m f	2	s pt 14	8
669	Coates, William, sen. ....	f	m f	2	s e qr 13	8
j 670	Coates, William, jun. ....	f	m f	2	s e qr 13	8
774	Campbell, John .....	f	m f	3	pt 13	8
j 785	Campbell, Neil .....	f	m f	3	n pt 15	8
j 786	Campbell, Colin J. ....	f	m f	3	s hf 15	8
787	Campbell, Colin, sen. ....	f	m f	3	s pt n hf 15	8
788	Campbell, Colin, jun. ....	f s	m f	3	s pt n hf 15	8
j 856	Cooper, Lewis .....	f	m f	4	n e qr 17	11
j 864	Connor, Charles .....	f	m f	4	n pt 13 & 14	14
966	Calhoun, Samuel .....	f	m f	5	pt 13	14
j 1103	Cline, Seth .....	f	m f	6	s pt 13	14
1104	Cline, George A. ....	f s	m f	6	s pt 13	14
j 860	Demaray, Phineas .....	f	m f	4	n w pt 16	11
j 986	Ewins, Freeman .....	f	m f	5	s pt 18	11
j 1093	Ewins, Robert .....	f	m f	6	n pt 17	11
1094	Ewins, James, sen. ....	f	m f	6	n pt 17	11
j 1095	Ewins, James, jun. ....	f	m f	6	n pt 17	11
j 1096	Ewins, Samuel .....	f	m f	6	s hf 16	11
j 1097	Ewins, William .....	f	m f	6	s hf 16	11

No. on P  
1101  
1102

652  
773  
850  
962  
971  
972  
973  
974

66  
97  
98  
98

7  
8  
9  
9



POLLING SUB-DIVISION No. 6.

27

Nos. 2, 3,  
elections

P. O.  
14  
11  
11  
11

8  
8  
8  
8  
11  
11  
14  
11

8  
8  
8  
8  
8  
8  
11

14  
14  
14  
14

11

1  
1  
1

No. on Roll.	Name.	Title.	M. F.	Con.	Lot.	P. O.
j 1101	Eaton, James	f	m f	6	14	14
1102	Eaton, Wesley	f s	m f	6	14	14
652	Farquhar, John	t	m f	2	17	2
773	Fulkerson, Mathias	t	m f	3	pt 13	8
850	Farquhar, Charles	t	m f	4	pt 18	11
j 962	Facey, Robert	f	m f	5	pt 13	14
j 971	Finch, Henry	f	m f	5	14	14
972	Finch, Lawrence	f s	m f	5	14	14
973	Finch, Walker	f s	m f	5	14	14
974	Finch, Walter	f s	m f	5	14	14
j 664	Hartle, William	t	m f	2	n hf 14	8
979	Hunter, William	f	m f	5	n e pt 16	11
980	Hunter, William H.	f s	m f	5	n e pt 16	11
988	Hunter, Paul	f	m f	5	pt 18	11
772	Jelly, William	f	m f	3	s pt 13	8
j 859	Jackson, William	f	m f	4	s pt 16	11
j 963	Jelly, J. J.	f	m f	5	pt 13	14
968	Jelly, James E.	f s	m f	5	s e pt 13	14
j 863	Kunz, Frank	f	m f	4	s pt 13 & 14	14
660	Malpass, William F.	f	m f	2	s pt 16	8
j 663	Malpass, William	f	m f	2	s pt 15	8
j 667	Myrick, Gardner	f	m f	2	w hf 13	8
j 855	Malpass, Bertram	t	m f	4	s hf 17	11
j 857	Manning, Henry	f	m f	4	n w qr 17	11
1087	Monk, James	t	m f	6	n w pt 18	11
654	McNiven, Angus	f	m f	2	18	2
j 655	McNiven, William	f	m f	2	s hf 17	2
j 656	McNiven, Archibald	f	m f	2	18	2
782	McCallum, James	f	m f	3	s hf 14	8
783	McCallum, Alexander	f s	m f	3	s hf 14	8
j 789	McCallum, John	f	m f	3	s hf 16	8
j 795	McConnel Way	f	m f	3	e pt 17	11
849	McCallum, John	f	m f	4	pt 18	11

## TOWNSHIP OF NORTH DORCHESTER.

No. on Roll.	Name.	Title.	M. F.	Con.	Lot.	P. O.
j 861	McCallum, Angus .....	f	m f	4	s pt 15	14
j 984	McMurray, Morris .....	f	m f	5	n e pt 18	11
j 985	McMurray, Byron .....	f s	m f	5	n e pt 18	11
j 1105	McVicar, Donald .....	f	m f	6	n hf 13	14
797	Potticary, William .....	t	m f	3	17	11
j 657	Sanger, Robert .....	t	m f	2	n w pt 16	2
j 659	Spring, Edward .....	f	m f	2	n e pt 16	8
j 661	Strathdee, John .....	f	m f	2	n hf 15	8
j 662	Strathdee, William .....	f	m f	2	n hf s hf 15	8
775	Spence, James .....	f	m f	3	pt 13	8
776	Spence Thomas .....	f	m f	3	n e pt 13	8
j 777	Spence, H. Nelson .....	f	m f	3	n e pt 13	8
778	Spence, Walter .....	f s	m f	3	n e pt 13	8
j 790	Scott, Alexander .....	f	m f	3	n hf 16	18
799	Stanley, George .....	f	m f	3	s w pt 18	11
964	Snively, Cole .....	t	m f	5	pt 13	14
j 976	Secord, Solomon .....	f	m f	5	s hf 15	14
j 977	Secord, William .....	f	m f	5	n e pt 15	11
j 987	Spring, Daniel .....	f	m f	5	pt s pt 18	11
j 779	Topham, Wellington .....	t	m f	3	n hf 14	8
j 780	Topham, Peter, jun .....	f	m f	3	n w pt 13	8
781	Topham, Peter, sen .....	f	m f	3	n hf 14	8
j 800	Watcher, William .....	f	m f	3	n w pt 18	11
301	Watcher, George .....	f s	m f	3	n w pt 18	11
j 853	Ward, Jefferson .....	f	m f	4	pt n hf 18	11
j 854	Ward, John .....	f	m f	4	pt n hf 18	11
j 967	Warren, Hugh .....	t	m f	5	s e pt 13	14
796	York, Stephen .....	f	m f	3	s w pt 17	11
j 982	York, William S .....	f	m f	5	s pt 17	14
1099	York, William .....	f	m f	6	15	14
j 1100	York, Frederick .....	f	m f	6	15	14

POLLING SUB-DIVISION No. 6.

PART II.—Persons entitled to vote at Municipal elections only :

No. on Roll.	Name.	Title.	M. F.	Con.	Lot.	P. O.
791	Bronskill, Mrs. ....	f		3	s e pt 17	11
951	Barrons, Henry.....	f		5	n w pt 13	14
784	Campbell, Mrs.....	f		3	n pt 15	8
865	Dunn, John P.....	f		4	n hf 13 & 14	10
1088	Faulds, George.....	f		6	n w pt 18	17
309	Hartle, George.....	f		2	n half 14	2
874	Jackson, Alonzo.....	f		5	n e pt 13	14
666	Learn, Mrs.....	f		2	pt s half 14	8
858	Manning, Mrs.....	f		4	n w qr 17	11
944	McMurray, Edward A.....	f		4	pt 18	14
969	McKee, Mrs.....	t		5	n pt 13	14
1092	McVicar, Alexander.....	f		6	s w pt 17	14
869	Rodway, Thomas.....	f		5	n e pt s half 13	14
266	Spring, Peter.....	f		2	n w pt 16	2
309	Strathdee, George.....	f		2	n half s half 15	2

PART III.—Persons entitled to vote at the elections to the Legislative Assembly only :

No. on Roll.	Name.	Title.	M. F.	Con.	Lot.	P. O.
798	Guin, Errob.....		m f	3	17	11
989	Hunter, Charles.....		m f	5	18	11
862	McCallum, A. P.....		m f	4	15	14
653	Sangster, James.....		m f	2	19	2
658	Sanger, William.....		m f	2	16	2
975	Venning, Andrew.....		m f	5	14	14
983	Ward, Edison.....		m f	5	17	14

## POLLING SUB-DIVISION NO. 7.

Comprising Lots 7 to 12, both inclusive, in Concessions Nos. 2, 3, 4, 5 and 6, south of the River Thames.

PART I.—Persons entitled to vote at both Municipal elections and elections to the Legislative Assembly :

No. on Roll.	Name.	Title.	M. F.	Con.	Lot.	P. O.
j 680	Amess, William .....	f	m f	2	s w pt 11	8
j 689	Arms, Frederick .....	t	m f	2	n e qr 10	8
1108	Adams, Samuel .....	f	m f	6	pt 12	14
1169	Adams, Clayton.....	f	m f	6	pt 12	14
587	Beacham, William, sen ...	t	m f	2	w pt 9	8
j 685	Beacham, William, jr.....	t	m f	2	w pt 9	8
691	Barr, Samuel.....	f	m f	2	s half 8	8
692	Barr, Allen.....	f	m f	2	s half 8	8
j 868	Barr, John.....	f	m f	4	s half 12	14
j 934	Bowen, William .....	f	m f	5	n half 9	14
935	Bowen, Justus .....	f s	m f	5	n half 9	14
j 951	Barrons, Henry.....	f	m f	5	n e pt 12	14
952	Barrons, James .....	f s	m f	5	n e pt 12	14
954	Bunkel, William.....	f	m f	5	pt 12	14
j 1113	Barr, Robert .....	f	m t	6	pt 11 & 12	14
j 1119	Beacham, John.....	t	m f	6	n half 9	14
j 683	Chilton, Thomas .....	f	m f	2	s e qr 10	8
j 690	Carswell, Thomas.....	f	m f	2	n e qr 9	8
j 699	Cornish, Thomas J. S.....	f	m f	2	n pt s half 7	8
751	Cornish, Thomas J.....	f	m f	3	e half 7	13
752	Cornish, Arthur.....	f	m f	3	e half 7	13
786	Coates, Eldon .....	f	m f	3	pt 12	8
j 873	Campbell, Daniel .....	f	m f	4	s w qr 10	14
j 759	Demaray, Samuel, jr.....	f	m f	3	s half 10	8
760	Demaray, Samuel, sen.....	f	m f	3	s half 10	8
958	Doan, W.....	f	m f	5	pt 12	14
j 753	Ferguson, George H.....	f	m f	3	w half 7	13
754	Fleming, George.....	f	m f	3	w half 7	13
j 933	Faulds, Willial.....	f	m f	5	s half 8	14
j 936	Fitzpatrick, Hugh.....	f	m f	5	s e qr.9	14
955	Frost, William .....	f	m f	5	pt 12	14
j 1106	Facey, Joseph .....	t	m f	6	pt 12	14

POLLING SUB-DIVISION No. 7.

31

No. on Roll.	Name.	Title.	M. F.	Con.	Lot	P.O.
1112	Facey, Samuel E.....	f	m f	6	pt 12	14
j 1115	Ferguson, Colin.....	f	m f	6	w half 10	14
j 1116	Ferguson, Daniel.....	f	m f	6	e half 10	14
1117	Ferguson, Herbert.....	f s	m f	6	e half 10	14
1120	Faulds, Andrew.....	f	m f	6	n half 9	14
j 1121	Faulds, James.....	f	m f	6	n e qr 8	14
187	Gibson, George.....	f	m f	2	n w qr 10	8
188	Gibson, John.....	f	m f	2	n e pt 11	8
j 757	Gee, Frederick D.....	t	m f	3	e half 9	8
758	Gee, James.....	t	m f	3	e half 9	8
j 938	Goodrich, James.....	f	m f	5	s w qr 9	14
961	Garton, Adin.....	f	m f	5	pt 12	14
j 1124	Gilbert, James.....	f	m f	6	s e pt 7	16
945	Hunter, John.....	f	m f	5	pt 10	11
j 695	Johnston, George.....	f	m f	2	n half 7	9
j 696	Johnston, Richard.....	f	m f	2	n half 7	9
j 771	Jelly Richard.....	f	m f	3	s pt 12	8
j 874	Jackson, Alonzo.....	f	m f	4	e half 10	14
j 881	Jenkin, John.....	f	m f	4	n pt 7	13
j 930	Johnson, Charles.....	f	m f	5	w pt 12	13
j 948	Jackson, Oswald.....	f	m f	5	n half 11	14
j 953	Kingwell, Philip.....	t	m f	5	w pt 12	14
957	Kellog, Wilton.....	f	m f	5	pt 12	14
1107	Krigger, Lewis.....	f	m f	6	pt 12	14
j 1122	Keaslor, Jacob.....	f	m f	6	s half 8	16
j 674	Lesley, Simon.....	t	m f	2	s w pt 12	8
j 765	Lane, Thomas.....	f	m f	3	n pt 12	8
766	Lane, Morley.....	f s	m f	3	n pt 12	8
767	Lane, Sidney.....	f s	m f	3	n pt 12	8
j 882	Leaman, Samuel.....	f	m f	4	s pt 7	13
883	Leaman, George.....	f s	m f	4	s pt 7	13
884	Leaman, Charles.....	f s	m f	4	s pt 7	13
j 929	Lucas, Daniel.....	f	m f	5	w pt e half 7	13
j 1123	Laur, George.....	f	m f	6	n pt 7	16

## TOWNSHIP OF NORTH DORCHESTER.

No. on Roll.	Name.	Title.	M. F.	Con.	Lot.	P. O.
671	Moakes, John.....	f	m f	2	s w pt 12	8
672	Moakes, James.....	f	m f	3	n w pt 12	8
j 677	Morrison, Thomas.....	f	m f	2	n pt 12	8
770	Moir, James.....	f	m f	3	pt 12	8
j 866	Morris, Nassaw.....	f	m f	4	pt 11 & 12	14
867	Morris, William A.....	fs	m f	4	pt 12	14
673	McCallum, Peter.....	t	m f	3	n w pt 12	8
j 871	McMillan, Archibald.....	t	m f	4	n w qr 10	8
j 944	McMurray, Edward.....	t	m f	5	pt 10	14
j 946	McCraidee, Charles.....	t	m f	5	s w qr 10	14
959	McKee, Thomas.....	t	m f	5	pt 12	14
j 880	Newell, Robert?.....	t	m f	4	n e qr 8	13
j 950	O'Neil, Hillyard.....	f	m f	5	s half 11	14
675	Pyatt, John.....	t	m f	2	c pt w half 12	8
676	Pyatt, James.....	t	m f	2	c pt w half 12	8
j 755	Rowse, John.....	f	m f	3	n half 8	8
869	Rodway, Thomas.....	f	m f	4	pt 11	14
682	Scott, William S.,.....	f	m f	2	pt 10 & 11	8
j 872	Sadler, John.....	f	m f	4	n e qr 11	8
j 870	Scott, Thomas.....	f	m f	4	n w qr 10	8
j 875	Steele, Archibald.....	f	m f	4	s half 9	14
876	Smith, William.....	f	m f	4	n half 9	14
j 877	Smith, James.....	f	m f	4	n w qr 8	14
j 879	Sadler, William.....	f	m f	4	s w qr 8	14
j 931	Sadler, Clarkson.....	f	m f	5	n w qr 8	14
939	Sharpe, Thomas.....	f	m f	5	n pt 10	14
j 940	Sharpe, Benjamin.....	f	m f	5	n pt 10	14
942	Smith, Enoch.....	f	m f	5	s e pt 10	14
694	Vincent, Edward.....	t	m f	2	n e qr 8	9
j 756	Venning, John.....	f	m f	3	s half 8	8
761	Venning, Richard, sen.....	f	m f	3	n pt 10	8

POLLING SUB-DIVISION No. 7.

33

No. on Roll.	Name.	Title.	M. F.	Con.	Lot.	P. O.
J 762	Venning, George		f m f	3	n pt 11	8
J 763	Venning, Charles		f m f	3	n pt 11	8
764	Venning, Richard, jr		f s m f	3	10	8
769	Venning, John		f m f	3	pt 12	8
1118	Venning, James		f m f	6	n half s half 9	14
956	White, Isaac		f m f	5	pt 12	14
J 960	York, Dennis		f m f	5	pt 12	14
J 1111	York, Burtlin		f m f	5	pt 12	14

PART II.—Persons entitled to vote at Municipal elections only :

681	Amoss, Miss Dora		f	2	s w pt 11	8
586	Arms, Thomas		f	2	n w qr 8	8
1089	Abbott, William		f	6	pt 12	2
566	Connor, Thomas		f	2	n e qr 8	9
865	Dunn, John P		f	4	n pt 12	10
962	Facey, Robert		f	6	pt 12	14
937	Fitzpatrick, David		f	6	w pt 7	
868	Graham, William		f	2	w pt 9	4
697	Johnson, Mrs		f	2	n half 7	8
698	Johnston, Robert		f	2	n half 7	
948	Jackson, Mrs		f	5	n half 11	14
772	Jelly, William		f	2	c pt 12	8
679	Manning, Jacob I		f	2	pt n half 11	15
693	Magée, Mrs. Hannah		f	2	n w qr 8	9

## TOWNSHIP OF NORTH DORCHESTER.

No. on Roll.	Name.	Title.	M. F.	Con.	Lot.	P. O.
478	Pyatt, George .....	f		2	pt n w qr 11	2
776	Spence, Thomas .....	f		2	s half n half 11	8
777	Spence, Nelson H. ....	f		1	s half n half 11	8
932	Sadler, Mrs. ....	f		5	n w qr 8	14
796	York, Stephen. ....	f		5	s w qr 10	11
947	York, Henry W. ....	f		5	s w qr 10	11

## PART III.—Persons entitled to vote at the elections of the Legislative Assembly only:

1114	Hubbard, Alexander .....	m f	6		11	14
684	Johnston, Benjamin. ....	m f	2		10	8
941	McKee, William. ....	m f	5		10	14
678	Pyatt, Cinnamon. ....	m f	2		11	8
703	Sims, William. ....	m f	2		7	8
878	Shea, John. ....	m f	4		8	14
943	Smith, Hiram. ....	m f	5		10	14
1125	Wright, Amos. ....	m f	6		7	16

Compr

electio

No. on

} 701

} 704

1143

} 70

70

80

110

} 110

8

8

8

8

} 1

} 1

} 1

} 1

} 1

} 1

} 1

} 1

} 1

} 1

} 1

} 1

} 1

} 1

} 1

} 1

} 1

} 1

} 1

} 1

} 1

} 1

} 1

} 1

} 1

} 1

} 1

} 1

} 1

} 1

} 1

} 1

} 1

} 1



## POLLING SUB-DIVISION No. 8.

Comprising Lots A, B and Nos. 1, 2, 3, 4, 5 and 6, in Concessions Nos. 1, 2, 3, 4, 5 and 6, south of the River Thames.

PART I.—Persons entitled to vote at both Municipal elections and elections to the Legislative Assembly:

No. on Roll.	Name.	Title.	M. F.	Con.	Lot.	P. O.
j 701	Allison, William	f	m f	2	e half 6	9
j 704	Atkins, Richard	f	m f	2	n half 5	9
1143	Andrews, J. H.	f	m f	6	pt 3	16
j 702	Brady, Norman	f	m f	2	s w pt 5	13
705	Barry, Thomas A.	f	m f	2	n e pt 4	9
707	Bird, Arthur J.	t	m f	2	n pt 4	9
899	Bongard, William L.	f	m f	4	pt A	13
1164	Bowey, George	f	m f	6	w pt B	16
j 1165	Bowey, John	f	m f	6	w pt B	16
893	Clement, Daniel	f	m f	4	n half 3	13
895	Clement, John	f s	m f	4	n half 3	13
891	Craik, James, sen	f	m f	4	s w qr 2	13
892	Craik, George	f	m f	2	s w pt n half 3	13
894	Craik, James, jr	f s	m f	4	s w qr 2	13
j 918	Cornish, J. Wesley	t	m f	5	s half n half 3	16
j 1138	Carnell, James	f	m f	6	pt 4	16
j 1152	Cook, Benjamin	f	m f	6	pt 3	16
j 1132	Degroat, Jonathan	f	m f	6	w pt 4	16
	Degroat, Alexander	f s	m f	6	w pt 4	16
1136	Dafoe, William	f	m f	6	pt 4	16
1141	Demaray, Richard	f	m f	6	pt 4	16
1159	Dafoe, Arthur	f	m f	6	s e qr 6	16
1161	Dafoe, E. Harmon	f	m f	6	n e qr 2	16
j 723	Eyre, Henry	f	m f	3	n pt A	13
1135	Ferney, John	f	m f	6	pt 4	16
1158	Fleming, Andrew	f	m f	6	pt 3	16
j 706	George, E. D.	f	m f	2	n pt 4	9
j 708	George, Henry	f	m f	2	n pt 4	13
709	George, Frederick	f s	m f	2	s half 4	13

## TOWNSHIP OF NORTH DORCHESTER.

No. on Roll.	Name.	Title.	M. F.	Con.	Lot.	P. O.
710	George, Herbert .....	f s	m f	2	s half 4	13
900	Goff, William .....	t	m f	4	pt A	13
901	Goff, Abram .....	t	m f	5	A & B	13
902	Goff, Henry .....	f s	m f	5	A & B	13
910	Groat, Daniel, sen.....	f	m f	5	s w qr 2	16
911	Groat, Daniel, Jr.....	f s	m f	5	s w qr 2	16
921	Gobel, Daniel.....	f	m f	5	s half 4	16
j 922	Gobel, George.....	f	m f	5	s half 4	16
j 700	Howe, J. Frank.....	f	m f	2	w half 6	9
j 718	Howe, Charles A.....	f	m f	2	s e pt 2	13
j 719	Howe, Robert .....	f	m f	2	s e pt 1	13
j 732	Howe, Frederick.....	f	m f	3	n pt 1	13
j 733	Howe, Newton .....	f	m f	3	n pt 1	13
j 897	Hopkins, F. B.....	f	m f	4	pt A	13
898	Hopkins, H. P.....	f	m f	4	pt A	13
907	Hugo, Henry.....	t	m f	5	s w qr 1	16
j 923	Haley, Arthur .....	f	m f	5	n w pt 4	13
j 1133	Herron, Henry .....	f	m f	6	c pt 4	16
749	Irvine, Francis.....	f	m f	3	n half 6	13
750	Irvine, Hamilton .....	f s	m f	3	n half 6	13
j 909	Johnston, John.....	f	m f	5	s e qr 2	16
1130	Johnston, Lawrence.....	f	m f	6	n half 5	16
j 1153	Johnston, William H.....	f	m f	6	n e qr 3	16
1144	Jolliffe, James .....	f	m f	6	pt 3	16
j 1167	Jolliffe, James .....	t	m f	6	e pt A	16
j 737	Longfield, David .....	f	m f	3	n w qr 3	13
j 738	Longfield, John.....	f	m f	3	s pt 4	13
j 740	Longfield, Amos.....	t	m f	3	n pt 4	13
916	Lucas, Silas .....	f	m f	5	s half 3	16
917	Lucas, Harmon.....	f s	m f	5	s half 5	16
1140	Lyle, Albert.....	f	m f	6	pt 4	16
711	Marwood, John.....	f	m f	2	s w qr 3	13
744	Morris, Samuel.....	f	m f	3	pt 3	13
j 889	Morris, Joseph.....	f	m f	4	pt n half 4	13
j 892	Morris, John.....	f	m f	4	s half 4	13
893	Maybee, William.....	t	m f	2	s w pt n half 3	13
j 1134	Miller, Theodore.....	f	m f	6	pt 4	16

POLLING SUB-DIVISION No. 8.

37

P. O.	No. on Roll.	Name.	Title.	M. F.	Con.	Lot.	P. O.
13	j 727	McLachlin, Duncan	f	m f	3	s pt B	13
13	728	McLachlan, Archibald	f s	m f	3	s pt B	13
13	734	McVicar, Duncan	f	m f	3	2	13
13	j 735	McVicar, Finlay	f	m f	3	n e qr 3	13
16	894	McCallum, John	t	m f	4	n e qr 4	13
16							
16							
	730	Noad, Cranswick	f	m f	3	s pt 1	13
	731	Noad, Henry	f s	m f	3	s pt 1	13
	j 891	Northcott, John	t	m f	4	s half 4	13
9	j 896	Newell, William G.	f	m f	4	s half 3	13
13	897	Newell, Robert	f	m f	4	s half 3	13
13	898	Newell, James A.	f s	m f	4	s half 3	13
13	j 895	Newell, John R.	f	m f	4	s w pt 1	13
13	j 1128	Nigh, Valentine	f	m f	6	s half 5	16
13	1129	Nigh, Herbert	f s	m f	6	s half 5	16
13							
16							
13							
16	890	Oliaria, Abram	f	m f	4	pt 4	13
13	j 720	Phelps, Othniel	f	m f	2	s pt B	13
13	j 736	Parsons, Henry	f	m f	3	s pt 3	13
	j 888	Parsons, George	f	m f	5	s e pt 5	13
	j 920	Parsons, Walter	f	m f	5	s half, n half 4	16
	924	Parsons, Thomas	f	m f	5	n half 5	13
	j 1155	Pike, George	f	m f	6	n w qr 2	16
	j 715	Rath, Joseph	f	m f	2	n half 2	9
	j 716	Rath, Henry	f	m f	2	s e qr 3	13
	717	Rath, Fredrick	f s	m f	2	s e qr 3	13
	j 745	Rowse, James C.	f	m f	3	n w pt 5	13
	j 886	Rickard, William	f	m f	4	s half 6	14
	j 887	Rossiter, Armon	f	m f	4	n half 5	13
	j 928	Rickard, Philip H.	f	m f	5	w half 6	13
	1139	Row, Robert	f	m f	6	pt 4	16
	713	Stevens, Stephen	f	m f	2	n pt 3	9
	714	Stevens, Edmond	f s	m f	2	n pt 3	9
	j 721	Shannon, Michael	f	m f	2	e pt A	9
	j 722	Shannon, Thomas	f	m f	2	w pt A & B	9
	j 725	Stone, William	t	m f	3	n pt B	13
	743	St Clair, Vining	f	m f	3	pt 4	13
	746	Steele, John	f	m f	3	s w pt 5	13
	j 747	Steele, Robert	f	m f	3	n e pt 6	13

No. on Roll.	Name.	Title.	M. F.	Con.	Lot.	P. O.
748	Steele, Alexander.....	f	m f	3	s w pt 5	13
885	Steele, William.....	t	m f	4	n w pt 6	13
926	Smith, Murray.....	f	m f	5	s half 5	16
927	Smjth, David.....	f s	m f	5	s half 5	16
1142	Staples, Rev. S.....	t	m f	6	pt 3	16
1150	Smith, George E.....	f	m f	6	c pt 3	16
1151	Smith, Thomas.....	f	m f	6	n w pt 3	16
1163	Swartout, John.....	f	m f	6	e half 1	16
899	Wright, James.....	f	m f	4	n half 2	13
890	Wright, John.....	f s	m f	4	n half 2	13
904	Whitcraft, Jacob.....	f	m f	5	n half 1	13
905	Whitcraft, George.....	f s	m f	5	n half 1	13
906	Whitcraft, Edgar.....	f s	m f	5	n half 1	13
1146	Wright, William.....	t	m f	6	pt 3	16
1149	Willie, Henry.....	f	m f	6	pt 3	16
1157	Whaley, Lyman.....	f	m f	6	s w pt 3	16
1166	Wilcox, John.....	f	m f	6	pt A & B	16

## PART II.—Persons entitled to vote at Municipal elections only :

1145	Bettridge, Miss.....	f		6	pt 3	16
903	Coleridge, John.....	f		5	A & B	10
1160	Dafoe, John.....	f		6	2	16
1156	George, Charles.....	t		6	s pt 2 & 3	16
739	Longfield, Mrs. Alice.....	f		3	n pt 4	13
908	Lucas, Silas J.....	f		5	s w qr 1	4
896	McCullogh, John.....	f		5	c pt 2	
919	McCallum, Mrs.....	f		5	pts 2 & 3	16
1147	McCallum, Miss Agnes.....	f		6	pt 3	16
1126	Pullin, Richard.....	f		6	w half 6	16
1127	Pullin, Arthur.....	t		6	s e qr 6	16
1148	Pullin, Robert.....	f		6	pt 3	16

POLLING SUB-DIVISION No. 8.

39

No. on Roll.	Name.	Title.	M. F.	Con.	Lot	P.O.
563	Rowse, James H.....	f		3	n w pt 5	9
1162	Rowe, William.....	f		6	s w qr 1	16
539	Shannon, John.....	f		2	n half 1	9
726	Stone, William.....	f		3	s pt A	12
729	Smith, James.....	f		4	n e pt 1	18
912	Tocker, Mrs.....	f		5	n e pt 2	13
913	Tocker, Christiana.....	f		5	n e pt 2	13
914	Tocker, Isabella.....	f		5	n e pt 2	13
915	Tocker, Jane.....	f		5	n e pt 2	13

PART III.—Persons entitled to vote at the elections of the Legislative Assembly only:

742	Irvine, George.....	m f		3	4	13
741	Longfield, Wesley.....	m f		3	4	13
1133	Lyons, Henry.....	m f		6	4	16
724	Mullin, James.....	m f		3	A	13
1131	McIntyre, William.....	m f		6	5	14
1154	Sims, Joseph.....	m f		6	3	16

Total number of persons qualified to act as Jurors are (444) four hundred and forty-four.

I, D. P. Aylsworth, Clerk of the Municipality of North Dorchester, in the County of Middlesex, do hereby certify that Parts I. and III. of the within List constitute a correct list for the year 1896 of all persons appearing by the last Revised Assessment Roll of the said Municipality to be entitled to vote at elections for Members of the Legislative Assembly, and that Parts I. and II. constitute a correct list for the said year of all persons appearing by the said Roll to be entitled to vote at Municipal Elections in said Municipality; and that a copy of such List was first posted up in my office at North Dorchester on the 11th day of July; and I hereby call upon all electors to examine the said List, and if any omissions or other errors are perceived therein, to take immediate proceedings to have the said errors corrected according to law.

D. P. AYLSWORTH,

Clerk of North Dorchester,

Dorchester Station Post Office.

Dated this 11th day of July, 1896.

CAHON DON Q 18 X 7 V 54  
0E

r, in  
the  
ar-  
en-  
and  
ons  
in  
ny  
on  
rs  
ld

CA40NDON Q18 X7V54

OE

