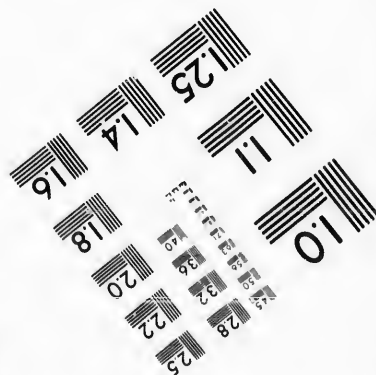
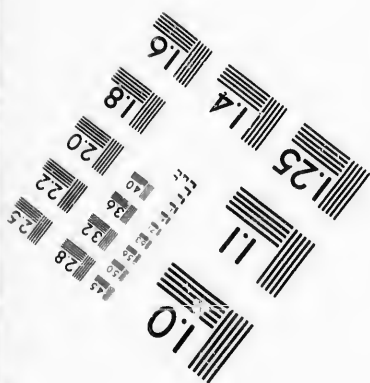
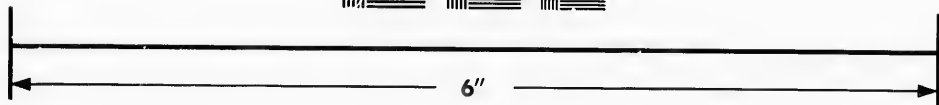
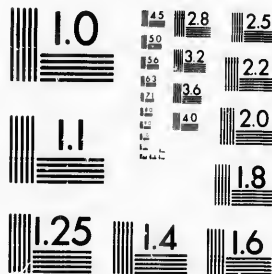


**IMAGE EVALUATION
TEST TARGET (MT-3)**



**Photographic
Sciences
Corporation**

23 WEST MAIN STREET
WEBSTER, N.Y. 14580
(716) 872-4503

**CIHM/ICMH
Microfiche
Series.**

**CIHM/ICMH
Collection de
microfiches.**



Canadian Institute for Historical Microreproductions / Institut canadien de microreproductions historiques

© 1987

The copy filmed here has been reproduced thanks to the generosity of:

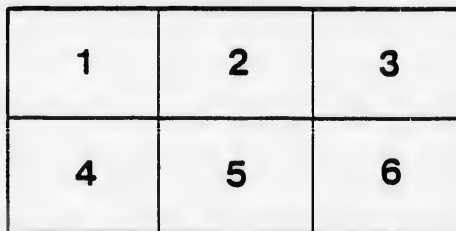
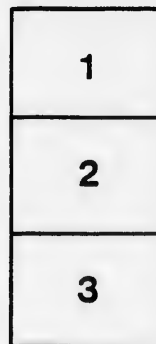
Harold Campbell Vaughan Memorial Library
Acadia University.

The images appearing here are the best quality possible considering the condition and legibility of the original copy and in keeping with the filming contract specifications.

Original copies in printed paper covers are filmed beginning with the front cover and ending on the last page with a printed or illustrated impression, or the back cover when appropriate. All other original copies are filmed beginning on the first page with a printed or illustrated impression, and ending on the last page with a printed or illustrated impression.

The last recorded frame on each microfiche shall contain the symbol \rightarrow (meaning "CONTINUED"), or the symbol ∇ (meaning "END"), whichever applies.

Maps, plates, charts, etc., may be filmed at different reduction ratios. Those too large to be entirely included in one exposure are filmed beginning in the upper left hand corner, left to right and top to bottom, as many frames as required. The following diagrams illustrate the method:



L'exemplaire filmé fut reproduit grâce à la générosité de:

Harold Campbell Vaughan Memorial Library
Acadia University.

Les images suivantes ont été reproduites avec le plus grand soin, compte tenu de la condition et de la netteté de l'exemplaire filmé, et en conformité avec les conditions du contrat de filmage.

Les exemplaires originaux dont la couverture en papier est imprimée sont filmés en commençant par le premier plat et en terminant soit par la dernière page qui comporte une empreinte d'impression ou d'illustration, soit par le second plat, selon le cas. Tous les autres exemplaires originaux sont filmés en commençant par la première page qui comporte une empreinte d'impression ou d'illustration et en terminant par la dernière page qui comporte une telle empreinte.

Un des symboles suivants apparaîtra sur la dernière image de chaque microfiche, selon le cas: le symbole \rightarrow signifie "A SUIVRE", le symbole ∇ signifie "FIN".

Les cartes, planches, tableaux, etc., pouvant être filmés à des taux de réduction différents. Lorsque le document est trop grand pour être reproduit en un seul cliché, il est filmé à partir de l'angle supérieur gauche, de gauche à droite, et de haut en bas, en prenant le nombre d'images nécessaire. Les diagrammes suivants illustrent la méthode.

ails
du
odifier
une
image

rrata
o

elure.
n à

32X

From a

Business Man's

Point of View.

MR. DANIEL R. NOYES,

OF ST. PAUL, MINN.

Is a business man who has attained success as well as prominence in the commercial world. As a close observer of the times, his testimony has value. We commend this extract from a recent newspaper issue, to the business men and citizens of Montreal :

“ While, for a few years past, compelled to retire somewhat from active service, I have been watching, with deep interest, the advancing line of the Young Men’s Christian Association, noting with admiration its remarkable improvement in organization, equipment, drill and discipline, and with especial pleasure its gain in character and *esprit du corps*. Not long since, these Associations were little more than independent companies, undisciplined, and with untrained officers and leaders. Now, nearly every state has its regiment, every section its corps, which is doing faithful and salient service for God among young men.

In those earlier years the duties of the individual member and even the work of the Association itself was not well defined. The field was large and open, and the work in some measure experimental. One Association engaged in one branch of Christian work, another in quite a different one—all good work and commendable ; but the general advance of this growing army was irregular. There were too many skirmishers, too many men out of line, and, as might have been expected, too many stragglers.

There is no longer any doubt as to the object of the Association, or the direct way to attain it. The officers are better trained and know how to direct the

energies of the Association to the end desired, namely, THE SALVATION OF THE SOULS AND BODIES OF YOUNG MEN.

Never before in the history of mankind have such means and influence and power for good been placed in the hands of young men. Never before have such forces been banded together for a single purpose of good. It is this unity of purpose and simplicity of machinery that commend the Association and its work to the business man. He notes, at once, directness of application, and consequent economy in the use of means, and feels an assurance of results, and it is RESULTS that a business man looks for. Good organization, fine equipment and even a great showing of work count but little with him, unless they minister directly to profitable results—to desirable ends.

In its growth and development, the Young Men's Christian Association is the religious marvel of this century, and in its business like methods, directness of application and its capacity to meet one of the greatest needs of our times, it is a marvel of practical wisdom.

The Association had its beginning in England, in 1844, in the mind of a *Christian business man*, and it had its beginning in this country with men of the same kind. Business men have furnished means, advice and aid all through its development, and have given it many a local habitation. The Young Men's Christian Association needs the sympathy and aid of every class in the community to enable it to do its best and most complete work, but *it especially commends itself to the generous support of business men*. It works directly in the line of their interests by attracting young men to that which is good, and educating them in ways that make them competent

and faithful. It helps to give character to the community. As an evidence of this note the sure mention of a fine Young Men's Christian Association building, if there is, or is to be one, in every general advertisement put forth by enterprising cities, east or west, north or south.

The organization is, of course, capable of future improvement, and the aid of the best and busiest business men is needed to bring to the Association the wise counsel and needed financial support necessary to assure their increased efficiency and usefulness."

With the Compliments of

THE BUILDING COMMITTEE

Young Men's Christian Association of Montreal.

Chairman,

JOHN KENNEDY,

Chief Engineer, Harbor Commissioners.

WARDEN KING Warden King & Son.
GEO. HAGUE General Manager, Merchants Bank.
D. W. ROSS Ross, Hall and Co.
R. H. HOLLAND R. H. Holland & Co.
ABNER KINGMAN Kingman, Brown & Co.
J. MURRAY SMITH Manager, Bank of Toronto.
L. H. PACKARD L. H. Packard & Co.
DR. F. W. KELLEY Montreal High School.
D. BENTLEY D. Bentley & Co.
DAVID YUILE North America Glass Co.

Treasurer,

CHARLES CUSHING,

Notary.

Secretary,

D. A. BUDGE.



Have you subscribed towards the Building Fund?

If not, the Committee respectfully solicits your co-operation in the erection and complete equipment of this Central Building on Dominion Square, for the Spiritual, Social, Educational and Physical work amongst the Young Men of this City. \$30,000 is still required.

