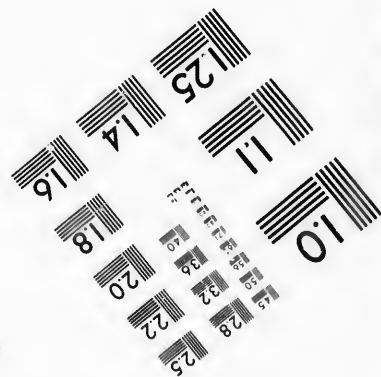
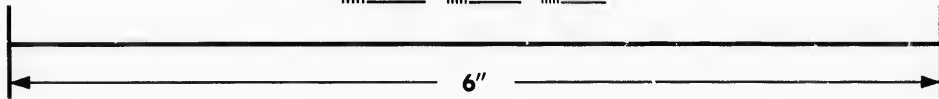
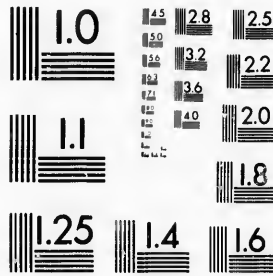


**IMAGE EVALUATION
TEST TARGET (MT-3)**



**Photographic
Sciences
Corporation**

23 WEST MAIN STREET
WEBSTER, N.Y. 14580
(716) 872-4503

1.45 1.28
1.20 1.22
1.18 1.20
1.18 1.20

**CIHM/ICMH
Microfiche
Series.**

**CIHM/ICMH
Collection de
microfiches.**



Canadian Institute for Historical Microreproductions / Institut canadien de microreproductions historiques

1.10
1.10

© 1987

Technical and Bibliographic Notes/Notes techniques et bibliographiques

The Institute has attempted to obtain the best original copy available for filming. Features of this copy which may be bibliographically unique, which may alter any of the images in the reproduction, or which may significantly change the usual method of filming, are checked below.

L'Institut a microfilmé le meilleur exemplaire qu'il lui a été possible de se procurer. Les détails de cet exemplaire qui sont peut-être uniques du point de vue bibliographique, qui peuvent modifier une image reproduite, ou qui peuvent exiger une modification dans la méthode normale de filmage sont indiqués ci-dessous.

- | | |
|--|--|
| <input type="checkbox"/> Coloured covers/
Couverture de couleur | <input type="checkbox"/> Coloured pages/
Pages de couleur |
| <input type="checkbox"/> Covers damaged/
Couverture endommagée | <input type="checkbox"/> Pages damaged/
Pages endommagées |
| <input type="checkbox"/> Covers restored and/or laminated/
Couverture restaurée et/ou pelliculée | <input type="checkbox"/> Pages restored and/or laminated/
Pages restaurées et/ou pelliculées |
| <input type="checkbox"/> Cover title missing/
Le titre de couverture manque | <input checked="" type="checkbox"/> Pages discoloured, stained or foxed/
Pages décolorées, tachetées ou piquées |
| <input type="checkbox"/> Coloured maps/
Cartes géographiques en couleur | <input type="checkbox"/> Pages detached/
Pages détachées |
| <input type="checkbox"/> Coloured ink (i.e. other than blue or black)/
Encre de couleur (i.e. autre que bleue ou noire) | <input checked="" type="checkbox"/> Snowthrough/
Transparence |
| <input type="checkbox"/> Coloured plates and/or illustrations/
Planches et/ou illustrations en couleur | <input checked="" type="checkbox"/> Quality of print varies/
Qualité inégale de l'impression |
| <input type="checkbox"/> Bound with other material/
Relié avec d'autres documents | <input type="checkbox"/> Includes supplementary material/
Comprend du matériel supplémentaire |
| <input type="checkbox"/> Tight binding may cause shadows or distortion
along interior margin/
La reliure serrée peut causer de l'ombre ou de la
distorsion le long de la marge intérieure | <input type="checkbox"/> Only edition available/
Seule édition disponible |
| <input type="checkbox"/> Blank leaves added during restoration may
appear within the text. Whenever possible, these
have been omitted from filming/
Il se peut que certaines pages blanches ajoutées
lors d'une restauration apparaissent dans le texte,
mais, lorsque cela était possible, ces pages n'ont
pas été filmées. | <input type="checkbox"/> Pages wholly or partially obscured by errata
slips, tissues, etc., have been refilmed to
ensure the best possible image/
Les pages totalement ou partiellement
obscurcies par un feuillet d'errata, une pelure,
etc., ont été filmées à nouveau de façon à
obtenir la meilleure image possible. |
| <input checked="" type="checkbox"/> Additional comments:/ [Printed ephemera] 1 sheet (verso blank)
Commentaires supplémentaires: | |

This item is filmed at the reduction ratio checked below/
Ce document est filmé au taux de réduction indiqué ci-dessous.

10X	14X	18X	22X	26X	30X	
						✓
12X	16X	20X	24X	28X	32X	

The copy filmed here has been reproduced thanks to the generosity of:

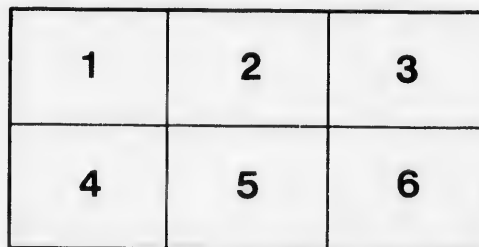
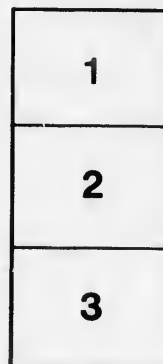
New Brunswick Museum
Saint John

The images appearing here are the best quality possible considering the condition and legibility of the original copy and in keeping with the filming contract specifications.

Original copies in printed paper covers are filmed beginning with the front cover and ending on the last page with a printed or illustrated impression, or the back cover when appropriate. All other original copies are filmed beginning on the first page with a printed or illustrated impression, and ending on the last page with a printed or illustrated impression.

The last recorded frame on each microfiche shall contain the symbol → (meaning "CONTINUED"), or the symbol ∇ (meaning "END"), whichever applies.

Maps, plates, charts, etc., may be filmed at different reduction ratios. Those too large to be entirely included in one exposure are filmed beginning in the upper left hand corner, left to right and top to bottom, as many frames as required. The following diagrams illustrate the method:



L'exemplaire filmé fut reproduit grâce à la générosité de:

New Brunswick Museum
Saint John

Les images suivantes ont été reproduites avec le plus grand soin, compte tenu de la condition et de la netteté de l'exemplaire filmé, et en conformité avec les conditions du contrat de filmage.

Les exemplaires originaux dont la couverture en papier est imprimée sont filmés en commençant par le premier plat et en terminant soit par la dernière page qui comporte une empreinte d'impression ou d'illustration, soit par le second plat, selon le cas. Tous les autres exemplaires originaux sont filmés en commençant par la première page qui comporte une empreinte d'impression ou d'illustration et en terminant par la dernière page qui comporte une telle empreinte.

Un des symboles suivants apparaîtra sur la dernière image de chaque microfiche, selon le cas: le symbole → signifie "A SUIVRE", le symbole ∇ signifie "FIN".

Les cartes, planches, tableaux, etc., peuvent être filmés à des taux de réduction différents. Lorsque le document est trop grand pour être reproduit en un seul cliché, il est filmé à partir de l'angle supérieur gauche, de gauche à droite, et de haut en bas, en prenant le nombre d'images nécessaire. Les diagrammes suivants illustrent la méthode.

rrata
o

pelure,
à

✓

32X

THEATRE.

St. John Dramatic Lyceum
SOUTH SIDE KING SQUARE.

MANAGER & PROPRIETOR, -- J. W. LANERGAN.
Assistant Manager, J. B. Browne. | Leader of the Orchestra, W. Mullaly.
Business Agent, H. B. Hapgood

Second time this Season of Falconer's great Irish Drama, called

PEEP O' DAY

Or, Saviourneen Deelish!

Played in London two successive Seasons.

HARRY KAVANAH--CAPT. PEEP O' DAY, . . . FRANK ROCHE.
MRS. LANERGAN, as . . . KATHLEEN, "Saviourneen Deelish."
MARY GRACE, "The Flower of Erin," by . . . RACHEL NOAH.
With the Song "Saviourneen Deelish."
FRANK HARDENBERG as BARNEY O'TOOLE.
Assisted by a powerful and efficient cast of characters.

Secure your Seats during the day.

THURSDAY EVE'NG, JUNE 27, 1867.

Will be presented the Irish Drama of

PEEP O' DAY!

Or Saviourneen Deelish.

(With the following powerful distribution of characters.)

HARRY KAVANAH, } A true son of Erin, {	MR. FRANK ROCHE.
CAPT. PEEP O' DAY, } Bold Soldier Boys. {	" T. C. HOWARD.
LIEUTENANT GRAHAM, } Bold Soldier Boys. {	" H. L. BASCOMB.
BARNEY O'TOOLE, (Foster Brother of Harry)	" FRANK HARDENBERG
PATRICK GRACE, (the good landlord)	" J. SCOTT.
MR. O'LEARY,	" J. B. FULLER.
STEPHEN PURCELL,	" D. R. ALLEN.
BLACK MULLINS, (a murderer)	" SHIRLEY FRANCE.
SERGEANT O'GRADY, (a yeoman)	" E. J. MACK.
RED MURTOGH, (the false guide)	" J. H. BROWNK.
DERWOOD,	" T. H. BURNS.
PHELIM,	" C. MINGAY.
PHADRIG,	" H. FRAIL
	Soldiers, Peep o' Day Boys, &c., &c.
KATHLEEN KAVANAH, "Saviourneen Deelish."	MRS. J. W. LANERGAN.
MARY GRACE, "The Flower of Erin."	RACHEL NOAH.
MRS. KAVANAH,	SUSAN FLOOD.
NANCK O'TOOLE,	MISS ROBERTS.
MOLSHIEE,	MRS. D. R. ALLEN.
BIDDY,	MRS. J. H. BROWNE.
WIDOW MAHONE,	MISS TOWNSEND.
NORAH,	MISS EFFIE WARREN.
PEGGY,	MISS JOHNSON.

INCIDENTS, &c.

ACT 1.—The Lover's Dingle among the Green Hills; the fair Kathleen; Barney's love; the false friend; the use of Gold; the Brother's rater; the Plot; Treachery; the Arrest; the Parting.
(A lapse of seven years is supposed to occur between first and second acts.)
ACT 2.—Barney and the Stranger; the broken-hearted Kathleen returns to her desolate home; a Story of Wrong and Cruelty; a Woman's resolve; THE PATTERN or FESTIVAL FAIR; FURCELL again; SONG—Barney—Barney too sharp for Furcell!—HOOROO FIGHT. IRISH JIG BY THE CHARACTERS. Who's for a Reel; Clear the counter girls; THE FACTION FIGHT. TABLEAU.
ACT 3.—Black Mullins and Stephen Purcell; Husband and Wife; The Yarned Letter; the Starve Maid; Poor Kathleen; Capt. Howard and the false guide; A STRUGGLE FOR LIFE; THE OLD QUARRY IN THE POIL DHUL, or DARK VALLEY; The grave being dug for its victim; Arrival of Kathleen. Encounter with Mullins; A Prayer for Life—"Oh, my brother may not die, my villain, die!" THRILLING TABLEAU.
ACT 4.—Mr. Grace's House; Kavanah in Disguise; the False Peep o' Day Boy; the Absolution; Barney on the Watch; Mary Grace Rescued by Captain Peep o' Day; Purcell arrested; the Lover's Dingle; THE DEAD RESTORED TO LIFE; YOUR HOUR HAS COME; Death of Purcell, Kathleen's Restoration to Happiness; Peace and contentment again visit THE PEEP O' DAY BOYS AND THE GREEN HILLS OF OLD ERIN.

Prices of Admission.

RESERVABLE ORCHESTRA SEAT, 50 cts. | PARQUETTE, 50 cts.

Reserved Seats on the Dress Circle and Stall 25 cts. each.

Which can be secured at the Office of the Lyceum during the day of each performance, from 11 A.M. to 1 1/2 P.M.

RESERVED SEAT, 25 cts. | Reserved until the performance is by order, or sold.

Tickets for sale during the day at Church & Co.'s Stationery Shop, Prince Wm. Street, and at the Hotel.

50.—The two Best Seats of the Dress Circle are set apart for the exclusive use of Colored People.

Doors open at 7 1/2; Performance to commence at 8.

LADIES UNACCOMPANIED BY GENTLEMEN NOT ADMITTED.

GOOD ORDER IS EXPECTED AND WILL BE RIGIDLY ENFORCED.

G. W. DAY, Printer, 4 Market Street, St. John.

