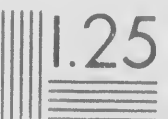
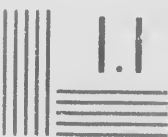
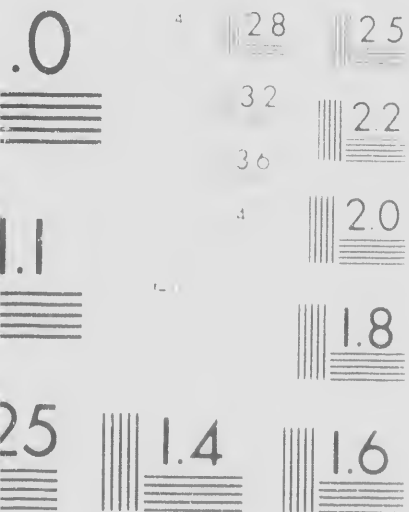
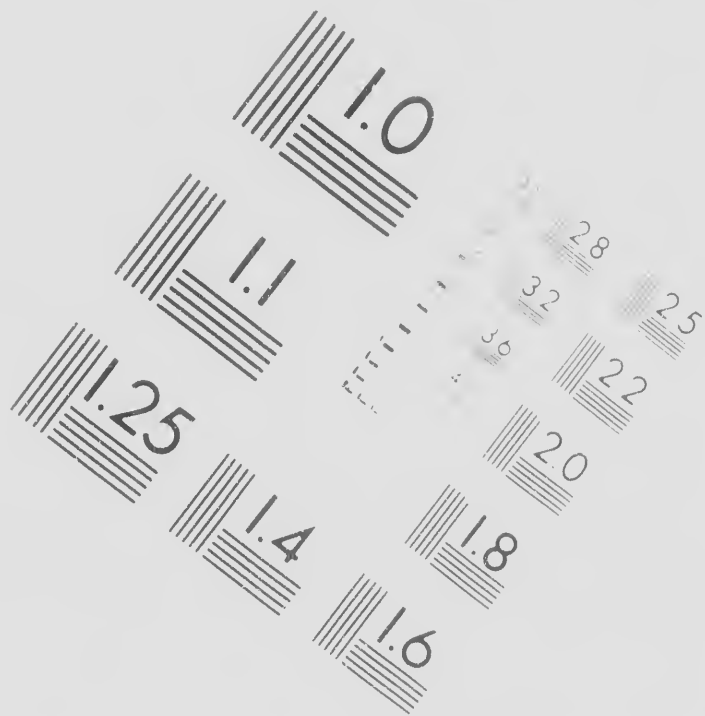


**IMAGE
TEST TA**



PERFORMANCE EVALUATION
TARGET (MT-3)



**CIHM/ICMH
Microfiche
Series.**

**CIHM/ICM
Collection
microfiche**

CMH
on de
hes.

Technical

The Institute has attempted to
original copy available for film
copy which may be bibliograph
which may alter any of the im
reproduction, or which may si
the usual method of filming, a

- Coloured covers/
Couverture de couleur
- Covers damaged/
Couverture endommagée
- Covers restored and/or la
Couverture restaurée et/o
- Cover title missing/
Le titre de couverture ma
- Coloured maps/
Cartes géographiques en
- Coloured ink (i.e. other th
Encre de couleur (i.e. autr
- Coloured plates and/or ill
Planches et/ou illustration
- Bound with other materia
Relié avec d'autres docum
- Tight binding may cause s
along interior margin/

Technical and Bibliographic Notes/Notes techniques et bibliographiques

... to obtain the best
... filming. Features of this
... graphically unique,
... images in the
... significantly change
... are checked below

L'Institut a microfilmé le meilleur exemplaire
qu'il lui a été possible de se procurer. Les détails
de cet exemplaire qui sont peut être uniques du
point de vue bibliographique, qui peuvent modifier
une image reproduite, ou qui peuvent exiger une
modification dans la méthode normale de filmage
sont indiqués ci-dessous.

...
... gée
... or laminated/
... et/ou pelliculée

Coloured pages/
Pages de couleur

... manque
... en couleur

Pages damaged/
Pages endommagées

... r than blue or black)/
... autre que bleue ou noire)

Pages restored and/or laminated/
Pages restaurées et/ou pelliculées

... r illustrations/
... tions en couleur

Pages discoloured, stained or foxed/
Pages décolorées, tachetées ou piquées

... erial/
... cuments

Pages detached/
Pages détachées

... se shadows or distortion

Showthrough/
Transparence

Quality of print varies/
Qualité inégale de l'impression

Includes supplementary material/
Comprend du matériel supplémentaire

Only edition available/
Seule édition disponible

The copy filmed here has been reproduced thanks to the generosity of:

Library of Congress
Photoduplication Service

The images appearing here are the best quality possible considering the condition and legibility of the original copy and in keeping with the filming contract specifications.

Original copies in printed paper covers are filmed beginning with the front cover and ending on the last page with a printed or illustrated impression, or the back cover when appropriate. All other original copies are filmed beginning on the first page with a printed or illustrated impression, and ending on the last page with a printed or illustrated impression.

Maps, plates, charts, etc., may be filmed at different reduction ratios. Those too large to be entirely included in one exposure are filmed beginning in the upper left hand corner, left to right and top to bottom, as many frames as required. The following diagrams illustrate the method:

L'exemplaire filmé fut reproduit grâce à la générosité de:

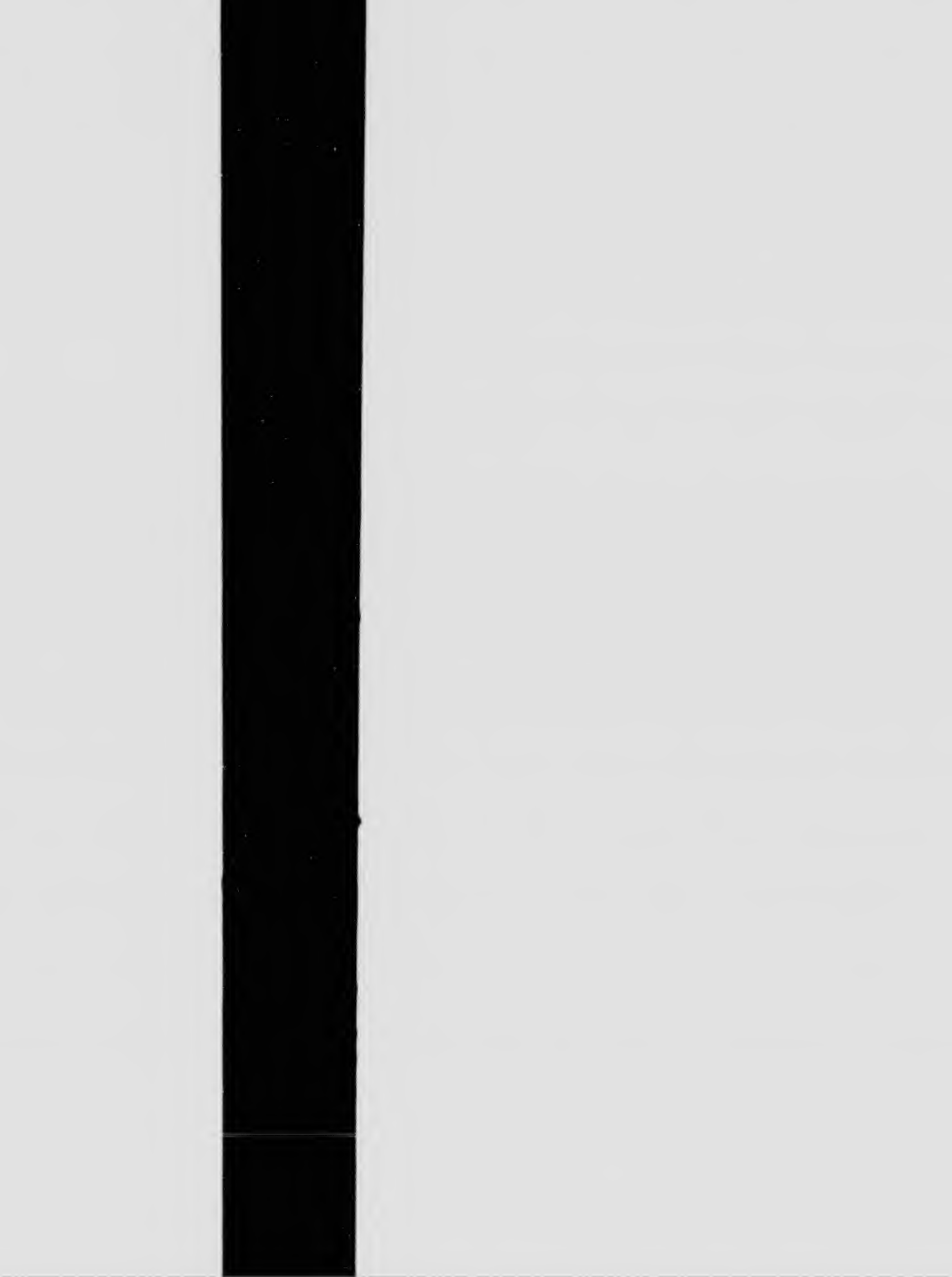
Library of Congress
Photoduplication Service

Les images suivantes ont été reproduites avec le plus grand soin, compte tenu de la condition et de la netteté de l'exemplaire filmé, et en conformité avec les conditions du contrat de filmage.

Les exemplaires originaux dont la couverture en papier est imprimée sont filmés en commençant par le premier plat et en terminant soit par la dernière page qui comporte une empreinte d'impression ou d'illustration, soit par le second plat, selon le cas. Tous les autres exemplaires originaux sont filmés en commençant par la première page qui comporte une empreinte d'impression ou d'illustration et en terminant par la dernière page qui comporte une telle empreinte.

Les cartes, planches, tableaux, etc., peuvent être filmés à des taux de réduction différents.

Lorsque le document est trop grand pour être reproduit en un seul cliché, il est filmé à partir de l'angle supérieur gauche, de gauche à droite, et de haut en bas, en prenant le nombre d'images nécessaire. Les diagrammes suivants illustrent la méthode.



FEB. Dye's Ready Reference List. 1893.

Counterfeits. **DOMINION OF CANADA.** Copyrighted.

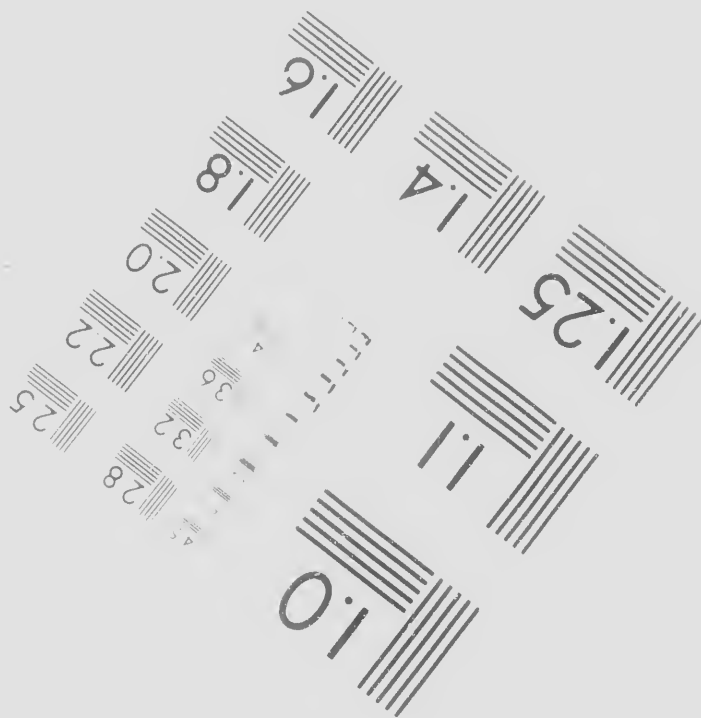
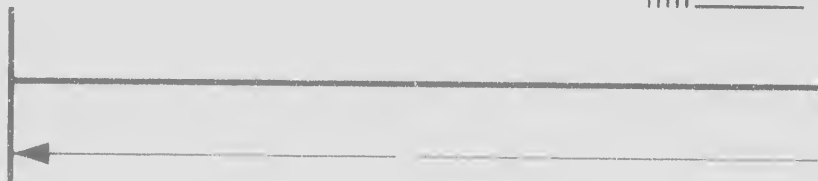
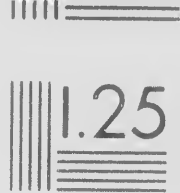
\$1	Dominion of Canada.	Cartier Issue.	Toronto backs.	Letter D....	<i>Dangerous</i>
1	"	"	"	" A.....	<i>Poor</i>
1	Bank of British N. A....	St. John, N. B.....			<i>Old Counterfeit</i>
1	Bank of Montreal.	Montreal, P. Q.....			"
1	Bank of Toronto.	Toronto, Ont.....			"
1	Union Bank of P. E. I. ...	Charlottetown, P. E. I.	Old Issue.....		<i>Photo</i>

2	Dominion of Canada...	Dufferin Issue.	Montreal backs.	Letter B....	<i>Dangerous</i>
2	"	"	Toronto backs.	" C	"
2	"	Wansdowne Issue,		" B	<i>Passable</i>
2	Bank of Montreal.	Montreal, Que.....			<i>Old Counterfeit</i>
2	"	Ottawa, Ont.....			"
2	Bank of Toronto.	Toronto, Ont.....			"
2	Quebec Bank.	Toronto, Ont.....			"
2	Union Bank of P. E. I....	Charlottetown, P. E. I.	Old Issue...	<i>Photo. & Litho</i>	
2	"	"	New "		<i>Poor</i>

4	Bank of British N. A....	St. John, N. B.	Old Issue.....		<i>Photo</i>
4	Dominion Bank.	Toronto, Ont.....			<i>Dangerous</i>
4	Bank of Upper Can.	From worthless	4 West Can.....		<i>Altered</i>

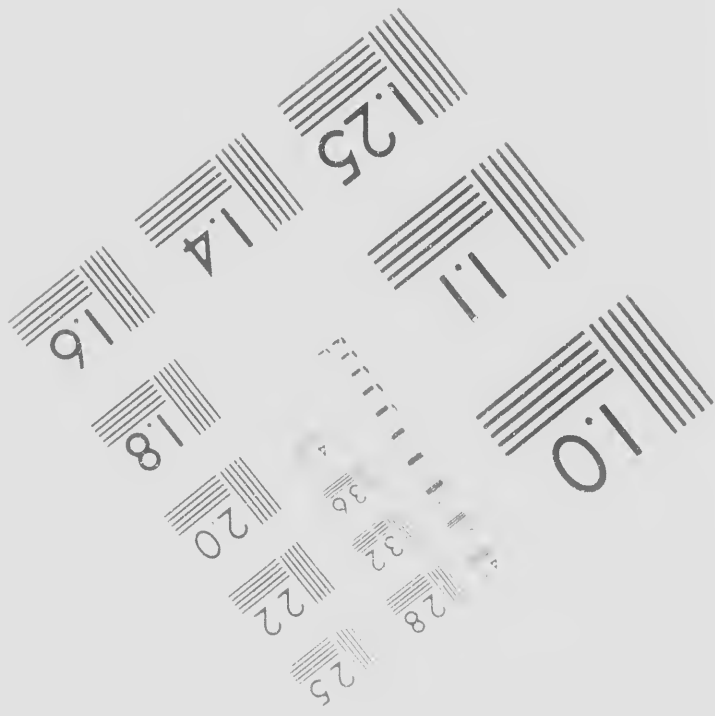
5	Bank of British N. A....	Montreal, Que.	Old Issue.	Letter D....	<i>Dangerous</i>
5	"	Kingston, Ont.	"	"	"
5	"	Quebec, Que.	"	"	<i>Photo</i>
5	Bank of Montreal.	Montreal, Que.	"	"	<i>Old Counterfeit</i>
5	"	"	"	"	"
5	Bank of Nova Scotia.	Halifax, N. S.	Letter B.....		<i>Pen and Brush Work</i>
5	Bank of Toronto.	Port Hope, Ont.....			<i>Photo</i>
5	"	Peterborough, Ont.....			"
5	Canadian Bank of Com...	Toronto, Ont.	Old Issue.	Letter C.....	<i>Dangerous</i>
5	Maritime Bank	St. John, N. B.,			<i>Pen and Brush Work</i>
5	Union Bank of P. E. I....	Charlestown, P. E. I.			<i>Photo</i>

10	Bank of British N. A.	Ottawa, Ont.	Old Issue.....		<i>Photo</i>
10	Canadian Bank of Com.	Toronto, Ont.	Letter D.	Old Issue...	<i>Dangerous</i>
10	La Banque Nationale.	Quebec, Que.....			<i>Passable</i>
10	Maritime Bank.	St. John, N. B.	Letter A..		<i>Pen and Brush Work</i>
10	Merchants' Bank of Canada.	Montreal, Que.	Letter D.....		<i>Photo</i>
10	Merchants' Bank of Halifax.	Halifax, N. S.	Old Issue.....		<i>Photo and Litho</i>
10	"	"	"	"	<i>Eng. and Litho</i>
10	Ontario Bank	Rowmansville, Ont.	Old Issue.	A..	<i>Dangerous</i>



Photograph
Science
Corporati

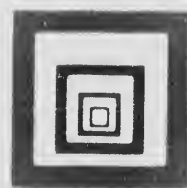
2.5 1.8 1.4 1.6



aphic
ces
ation

23 WEST MAIN STREET
WEBSTER, N.Y. 14580
(716) 872-4503

C



Canadian Institute for Historical Microreproductions / Institut canadien de microreproduction

© 1988

reproductions historiques

36

Planches et/ou illustrations

Bound with other material

Relié avec d'autres documents

Tight binding may cause shadows
along interior margin/

La reliure serrée peut causer
distorsion le long de la marge

Blank leaves added during
restoration may appear within the text. We
have been omitted from film.

Il se peut que certaines pages
ajoutées lors d'une restauration appa
raissent dans le texte. Elles ont
été omises lors de la prise en
film, mais, lorsque cela était possible,
elles ont été filmées.

Additional comments: /

Commentaires supplémentaires

This item is filmed at the reduction rate of

Ce document est filmé au taux de réduction de

10X

14X



12X

16X

ons en couleur

Qualité inégale de l'impression

erial/
cuments

Includes supplementary material/
Comprend du matériel supplémentaire

se shadows or distortion

Only edition available/
Seule édition disponible

causer de l'ombre ou de la
marge intérieure

Pages wholly or partially obscured by errata
slips, tissues, etc., have been refilmed to
ensure the best possible image/
Les pages totalement ou partiellement
obscurcies par un feuillet d'errata, une pelure
etc., ont été filmées à nouveau de façon à
obtenir la meilleure image possible

ring restoration may

Whenever possible, these
m filming/

pages blanches ajoutées
apparaissent dans le texte,
t possible, ces pages n'ont

CIHM no. 60569

mentaires

duction ratio checked below/

ux de réduction indiqué ci-dessous.

18X

22X

26X

30X



16X

20X

24X

28X

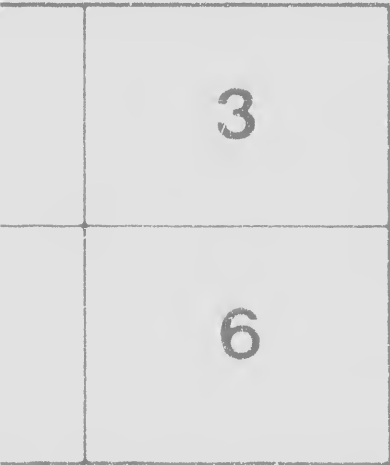
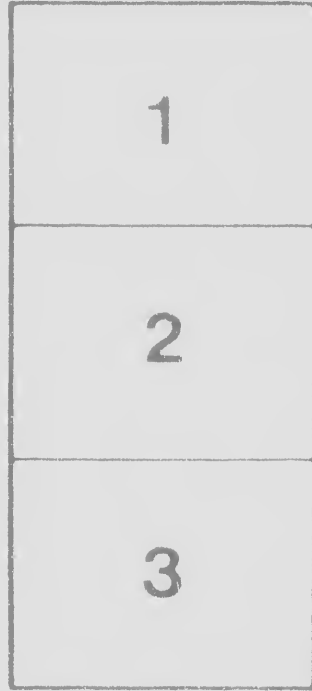
32X

different reduction ratios. Those too large to be entirely included in one exposure are filmed beginning in the upper left hand corner, left to right and top to bottom, as many frames as required. The following diagrams illustrate the method:



films à des taux de réduction différents.

Lorsque le document est trop grand pour être reproduit en un seul cliché, il est filmé à partir de l'angle supérieur gauche, de gauche à droite, et de haut en bas, en prenant le nombre d'images nécessaire. Les diagrammes suivants illustrent la méthode.





5	Union Bank of P. E. I.	Charlestown, P. E. I.	Photo
10	Bank of British N. A.	Ottawa, Ont.	Old Issue.....Photo
10	Canadian Bank of Com.	Toronto, Ont.	Letter D. Old Issue...Dangerous
10	La Banque Nationale.	Quebec, Que.Passable
10	Maritime Bank.	St. John, N. B.	Letter A..Pen and Brush Work
10	Merchants' Bank of Canada	Montreal, Que.	Letter D.....Photo
10	Merchants' Bank of Halifax	Halifax, N. S.	Old Issue.....Photo and Litho
10	"	"	".....Eng. and Litho
10	Ontario Bank	Bowmansville, Ont.	Old Issue. A..Dangerous
10	Peoples Bk of New Brunsw'k.	Fredericton, N. B.	Letter A.....Photo

BANKS FAILED, CLOSED, MERGED, in LIQUIDATION & in RECEIVER'S HANDS

NEW BRUNSWICK.		"	British Canadian Bank....Fraud
Fredericton,	Central Bk of N. B...	Closed	"
Moncton,	W. moreland Bk of N.B.	Failed	"
St. Andrews,	Charlotte County Bk.	"	"
St. John,	Commercial Bk of N.B...	"	"
"	Maritime Bank.	In Liq.	"
NOVA SCOTIA.		"	St. Lawrence Bank.....Merged
Liverpool,	Bank of Acadia, N.S...	Failed	PRINCE EDWARD ISLAND.
Liverpool,	Bank of Liverpool	"	Charlottetown, Bk of P. E. I.....Closed
Pictou,	Pictou Bank.....	In Liq.	"
ONTARIO.		"	Union Bk of P.E.I..Merged
Brantford	Bank of Brantford.....	Failed	Rustico, Farmer's Bank.....See page 58
Clifton,	Bank of Clifton.....	"	QUEBEC.
"	Bk. of Western Can.....	Fraud	Montreal, Bank of Canada.....Failed
Elgin,	Zimmerman's Bank.....	Closed	"
Hamilton,	Gore Bk of Niagara...	Merged	"
Kingston,	Commercial Bk of Can.	"	"
London,	Bank of London...	Suspended	"
St. Cath.,	Niagara Dis. Bk.....	Merged	"
Toronto,	Agri. Bk of Up. Can.....	Failed	"
"	Bank of the People.....	Closed	"
"	Bk of Upper Can.....	In R. H	"
			Quebec, Stadacona Bank.....Closed
			Stanstead, Provincial Bk of Can... "

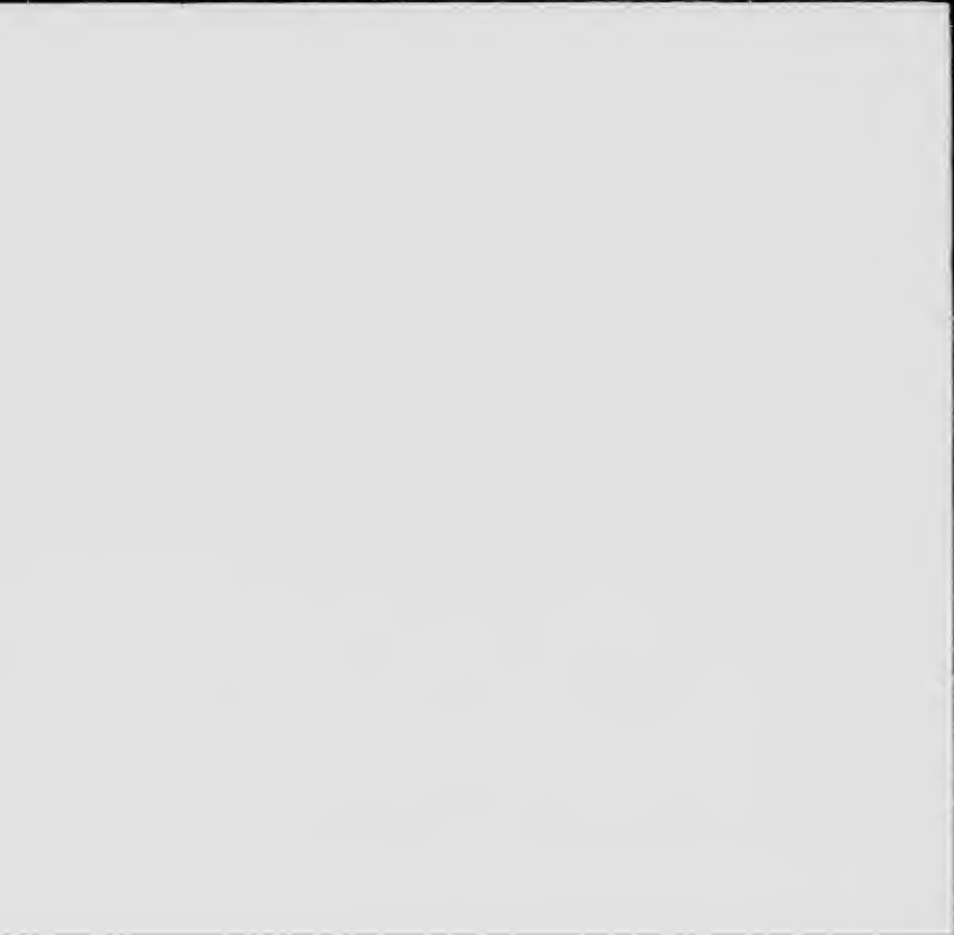
Bills of Issue on Merged banks, or banks in Liquidation, are received at face value at the banks of redemption. The bills of Closed or Failed banks are worthless For other banks see page 60.

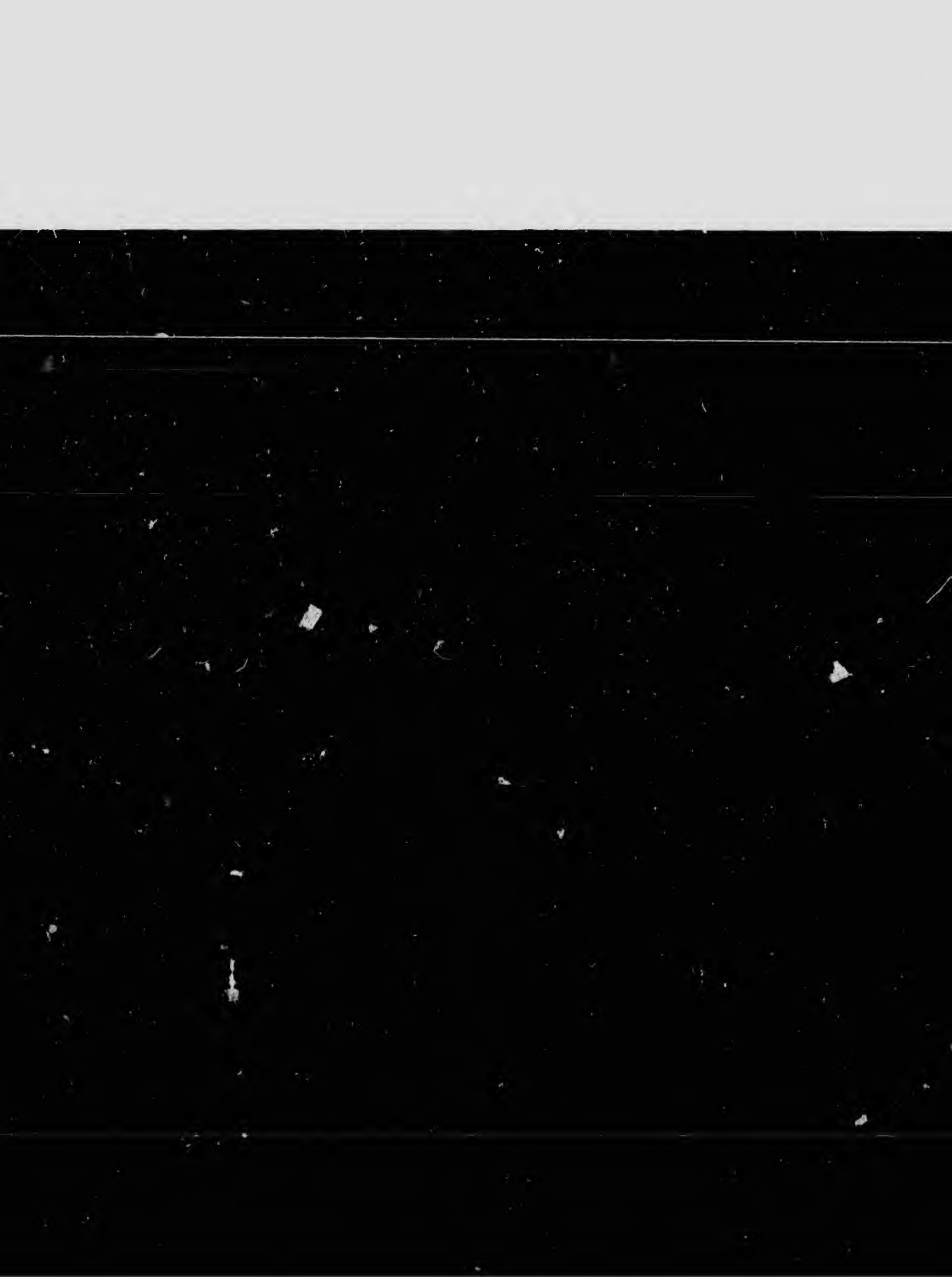










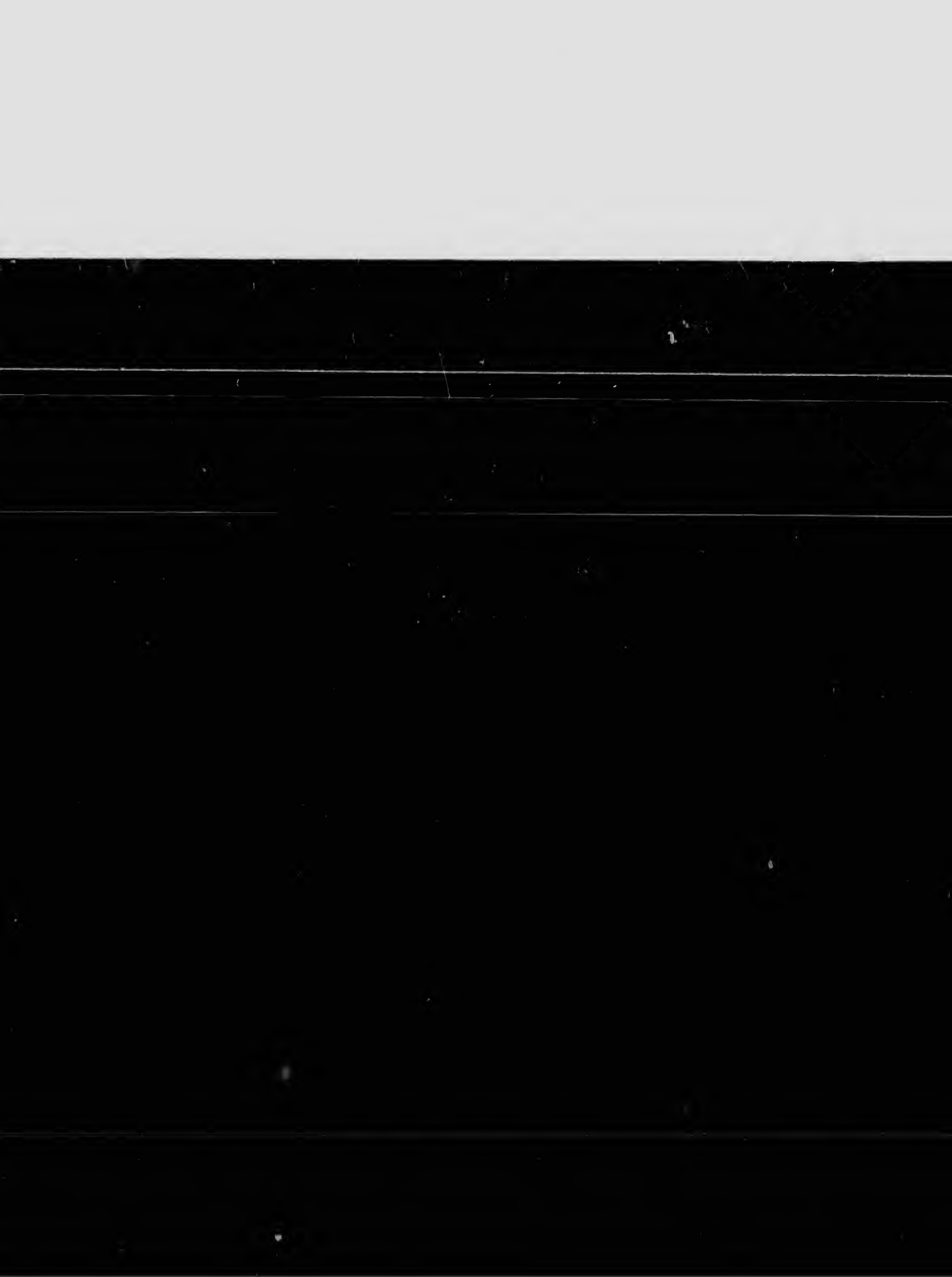
















As bills of the same kind, and of
U. S. Notes, Treasury Notes of
original proportions remain,
When otherwise mutilated,
value ; but fragments not of
then all fragments are redee
NATIONAL BANK NOTES of 3-5 of or
urer. Less than 3-5, then re
without affidavit that the n

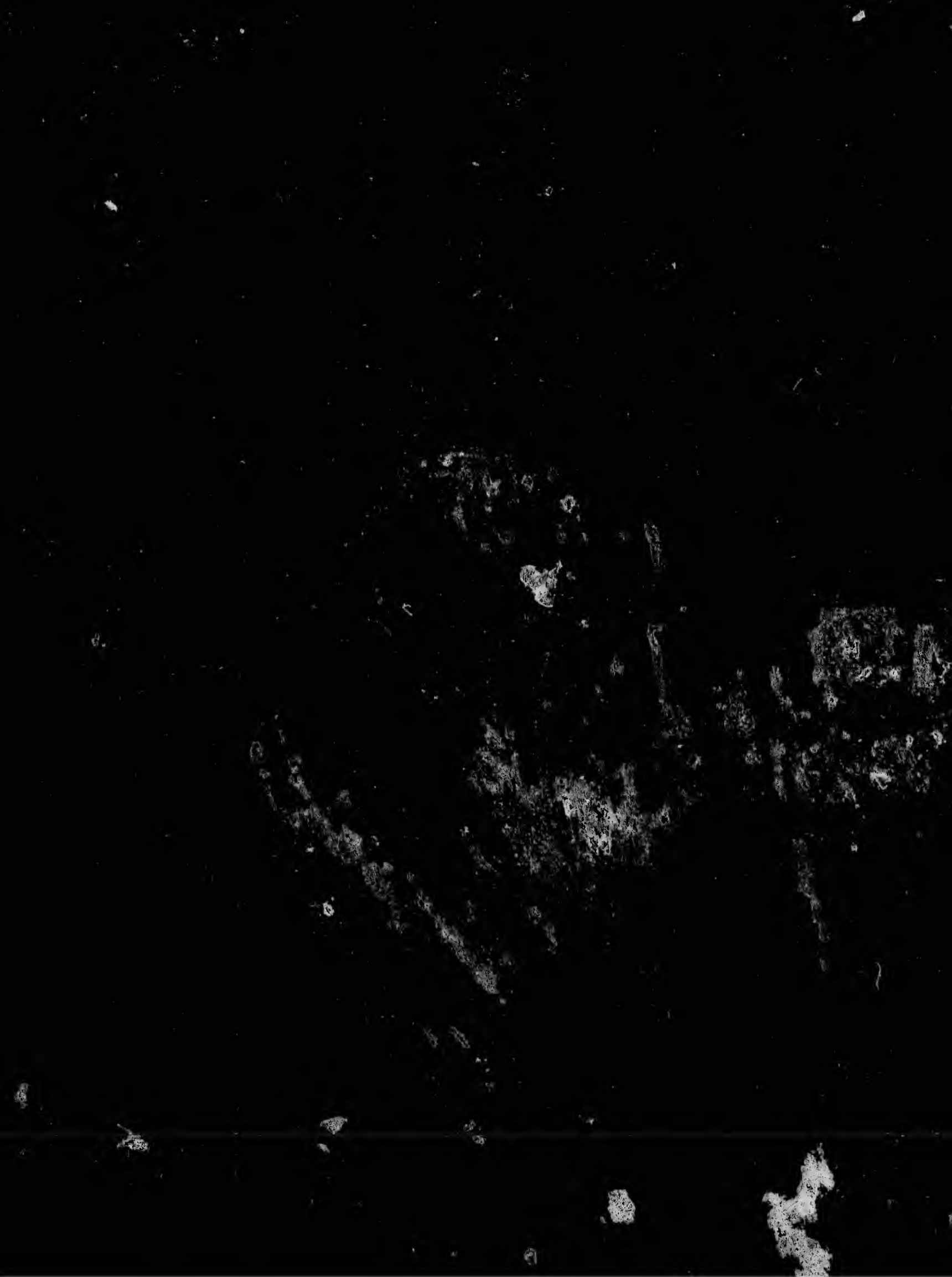
LEGAL TENDER NOTE DISCOUNT DIAGRAM.

and of different kinds, vary in size; hence, any diagram is practically of but little use.
 Notes of 1890, Gold or Silver Certificates, and Fractional Currency Notes, when not mutilated so that less than three-fourths remain, are redeemable at full face value by the U. S. Treasurer or the several Assistant Treasurers of the U. S. Treasury Department, and if of clearly more than two-fifths, then redeemable at one-half face value by the U. S. Treasurer only, and if of clearly more than two-fifths, are not redeemable, except by affidavit that the missing portions are totally destroyed, in which case they are redeemable at full face value.
 Notes of original proportions, bearing name of bank and signature of one officer, redeemable at full face value by the U. S. Treasurer or the several Assistant Treasurers of the U. S. Treasury Department, when redeemable similar to the U. S. notes. Unless clearly more than two-fifths remain, not acceptable from the banks by the U. S. Treasurer, and if of clearly more than two-fifths, are not redeemable, except by affidavit that the missing portions are totally destroyed.

three-fifths of the
the United States
one-half of face
ly destroyed, and

y the U. S. Treas-
he U.S. Treasurer

















As bills of the same kind, and of
U. S. Notes, Treasury Notes of
original proportions remain,
When otherwise mutilated,
value ; but fragments not cl
then all fragments are redee
NATIONAL BANK NOTES of 3-5 of ori
urer. Less than 3-5, then re
without affidavit that the m

of different kinds, vary in size; hence, any diagram is practically of but little use.
of 1890, Gold or Silver Certificates, and Fractional Currency Notes, when not mutilated so that less than three
main, are redeemable at full face value by the U. S. Treasurer or the several Assistant Treasurers of the U.
ted, redeemable by the U. S. Treasurer only, and if of clearly more than two fifths, then redeemable at one
ot clearly more than two-fifths, are not redeemable, except by affidavit that the missing portions are totally de
redeemable at full face value.
f original proportions, bearing name of bank and signature of one officer redeemable at full face value by the
en redeemable similar to the U. S. notes. Unless clearly more than 25 not acceptable from the banks by the U.
ne missing parts are totally destroyed.

three-fifths of the
of the United States
one-half of face
ly destroyed, and

y the U. S. Treas-
ne U.S. Treasurer

