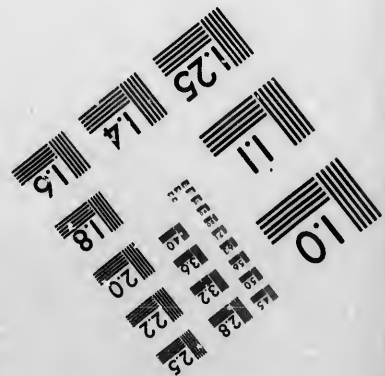
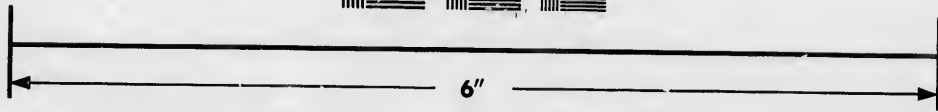
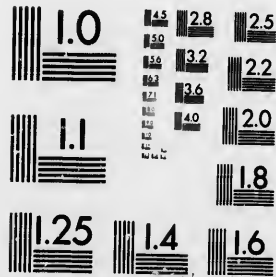


IMAGE EVALUATION
TEST TARGET (MT-3)



Photographic
Sciences
Corporation

23 WEST MAIN STREET
WEBSTER, N.Y. 14580
(716) 872-4503

1.8 2.0 2.2 2.5
2.8 3.2 3.6 4.0 4.5 5.0 5.6 6.3 7.1 8.0 9.0 10.0 11.2 12.5 14.0 16.0 18.0 20.0 22.5 25.0 28.0 31.5 36.0 40.0 45.0 50.0 56.0 63.0 71.0 80.0 90.0 100.0

**CIHM/ICMH
Microfiche
Series.**

**CIHM/ICMH
Collection de
microfiches.**



Canadian Institute for Historical Microreproductions / Institut canadien de microreproductions historiques

© 1986

10
11

Technical and Bibliographic Notes/Notes techniques et bibliographiques

The Institute has attempted to obtain the best original copy available for filming. Features of this copy which may be bibliographically unique, which may alter any of the images in the reproduction, or which may significantly change the usual method of filming, are checked below.

L'Institut a microfilmé le meilleur exemplaire qu'il lui a été possible de se procurer. Les détails de cet exemplaire qui sont peut-être uniques du point de vue bibliographique, qui peuvent modifier une image reproduite, ou qui peuvent exiger une modification dans la méthode normale de filmage sont indiqués ci-dessous.

- Coloured covers/
Couverture de couleur
- Covers damaged/
Couverture endommagée
- Covers restored and/or laminated/
Couverture restaurée et/ou pelliculée
- Cover title missing/
Le titre de couverture manque
- Coloured maps/
Cartes géographiques en couleur
- Coloured ink (i.e. other than blue or black)/
Encre de couleur (i.e. autre que bleue ou noire)
- Coloured plates and/or illustrations/
Planches et/ou illustrations en couleur
- Bound with other material/
Relié avec d'autres documents
- Tight binding may cause shadows or distortion along interior margin/
La reliure serrée peut causer de l'ombre ou de la distorsion le long de la marge intérieure
- Blank leaves added during restoration may appear within the text. Whenever possible, these have been omitted from filming/
Il se peut que certaines pages blanches ajoutées lors d'une restauration apparaissent dans le texte, mais, lorsque cela était possible, ces pages n'ont pas été filmées.
- Additional comments:/
Commentaires supplémentaires:
Pages are creased.
[Printed Ephemera] [4]p.
- Coloured pages/
Pages de couleur
- Pages damaged/
Pages endommagées
- Pages restored and/or laminated/
Pages restaurées et/ou pelliculées
- Pages discoloured, stained or foxed/
Pages décolorées, tachetées ou piquées
- Pages detached/
Pages détachées
- Showthrough/
Transparence
- Quality of print varies/
Qualité inégale de l'impression
- Includes supplementary material/
Comprend du matériel supplémentaire
- Only edition available/
Seule édition disponible
- Pages wholly or partially obscured by errata slips, tissues, etc., have been refilmed to ensure the best possible image/
Les pages totalement ou partiellement obscurcies par un feuillet d'errata, une pelure, etc., ont été filmées à nouveau de façon à obtenir la meilleure image possible.

This item is filmed at the reduction ratio checked below/
Ce document est filmé au taux de réduction indiqué ci-dessous.

10X	12X	14X	16X	18X	20X	22X	24X	26X	28X	30X	32X
				✓							

The copy filmed here has been reproduced thanks to the generosity of:

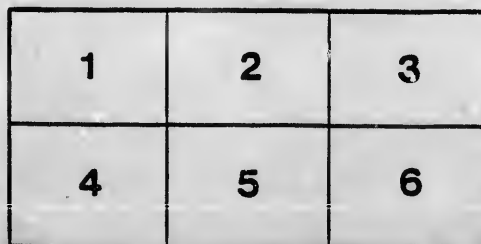
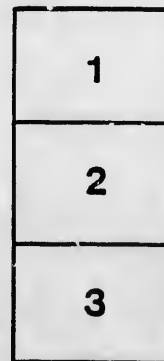
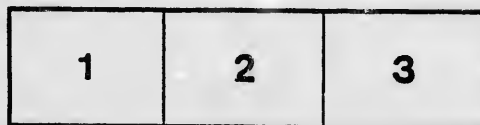
Archives of Ontario
Toronto

The images appearing here are the best quality possible considering the condition and legibility of the original copy and in keeping with the filming contract specifications.

Original copies in printed paper covers are filmed beginning with the front cover and ending on the last page with a printed or illustrated impression, or the back cover when appropriate. All other original copies are filmed beginning on the first page with a printed or illustrated impression, and ending on the last page with a printed or illustrated impression.

The last recorded frame on each microfiche shall contain the symbol \rightarrow (meaning "CONTINUED"), or the symbol ∇ (meaning "END"), whichever applies.

Maps, plates, charts, etc., may be filmed at different reduction ratios. Those too large to be entirely included in one exposure are filmed beginning in the upper left hand corner, left to right and top to bottom, as many frames as required. The following diagrams illustrate the method:



L'exemplaire filmé fut reproduit grâce à la générosité de:

Archives of Ontario
Toronto

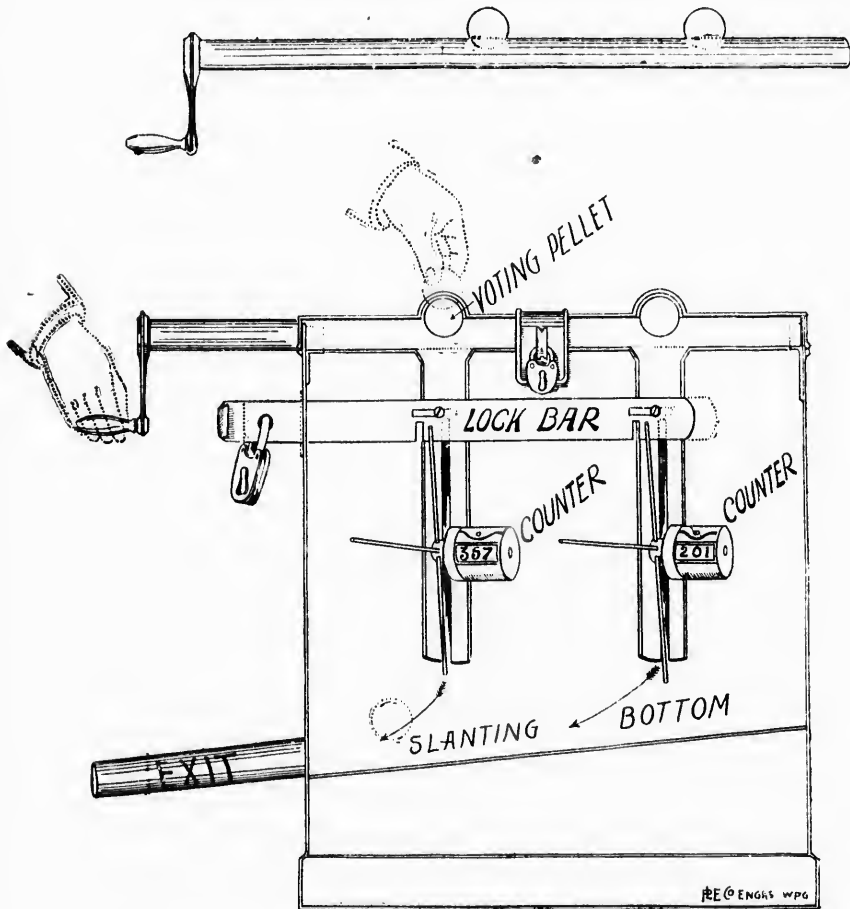
Les images suivantes ont été reproduites avec le plus grand soin, compte tenu de la condition et de la netteté de l'exemplaire filmé, et en conformité avec les conditions du contrat de filmage.

Les exemplaires originaux dont la couverture en papier est imprimée sont filmés en commençant par le premier plat et en terminant soit par la dernière page qui comporte une empreinte d'impression ou d'illustration, soit par le second plat, selon le cas. Tous les autres exemplaires originaux sont filmés en commençant par la première page qui comporte une empreinte d'impression ou d'illustration et en terminant par la dernière page qui comporte une telle empreinte.

Un des symboles suivants apparaîtra sur la dernière image de chaque microfiche, selon le cas: le symbole \rightarrow signifie "A SUIVRE", le symbole ∇ signifie "FIN".

Les cartes, planches, tableaux, etc., peuvent être filmés à des taux de réduction différents. Lorsque le document est trop grand pour être reproduit en un seul cliché, il est filmé à partir de l'angle supérieur gauche, de gauche à droite, et de haut en bas, en prenant le nombre d'images nécessaire. Les diagrammes suivants illustrent la méthode.

The Macdonald Voting Machine.



SECTIONAL VIEW OF VOTING MACHINE.

Extract from the Winnipeg Daily Tribune of April 9th, 1898 :

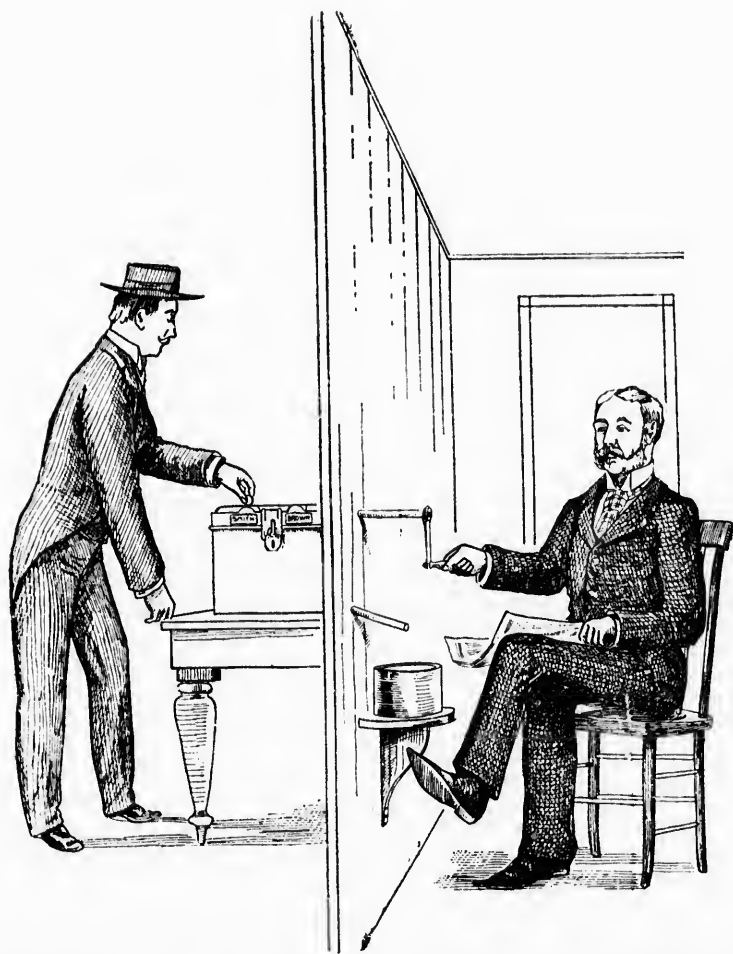
A bill is now before the legislature of Manitoba to permit municipalities to use in their elections Mr. P. A. Macdonald's voting machine. At first sight the average citizen might not think there is much need of such a machine, but a little reflection will show that the present ballot system has many disadvantages. The faults of the present system are not only many, but they are important. It is not secret, as often arranged; it is slow, mistakes are frequent, in fact constant, and it is very expensive, in that recounts and new elections are continually arising out of difficulties in it, which a perfect voting machine would get rid of. The shortcomings of the present ballot system are seen when the constant attempts at improving it are noted. At the last Dominion election an attempt was made to improve the ballot box system by a distinct failure. How easily the ballot system can be "worked" for corrupt purposes has been conclusively shown not only in successful attempts to get round the Australian ballot in the U. S., but in a couple of elections nearer home, recently ventilated in the courts.

Mr. Macdonald is master in equity of the Manitoba supreme court, and doubtless among other things that suggested the need of a new system was the frequency of election recounts and trials. These difficulties are not confined to Canada, for in a recent number of the Fortnightly Review an inventor describes at length a complicated and extensive apparatus, each machine of which system would probably cost more than a sufficient number of Mr. Macdonald's boxes to take the vote in a large Dominion constituency. In the United States, too, a voting machine has been in operation for two years.

Mr. Macdonald's machine is so simple that one minute's look at it removes a lot of objections which naturally arise. Description of even the simplest mechanical device is not an easy matter; and in this case a machine to record votes at an election where there are only two candidates will be described. It may be stated, however, that by simply extending the machine, as many candidates can be accommodated as ever enter the field in Canada.

This machine is outwardly about the size and shape of an ordinary ballot box. When in operation it is placed on a table, which table stands behind a screen. In front of the screen is another table. A round wooden rod about $1\frac{1}{2}$ inches in diameter reaches horizontally from the top of the box through the screen, and its free end extends over the table in front of the screen. From the bottom of the box a tin tube also extends over the table. The table slants slightly toward the table in front of the screen. The table on which the box is placed, behind the screen, is hidden from all view except that of the voter depositing his vote. The table in front of the screen is for the deputy returning officer, poll clerks and scrutineers.

When a voter enters the poll he gives his name to the poll clerk seated at the table, who with the scrutineers checks it off. The voter is then handed a marble, and going behind the screen, finds two holes in the top of the box, one for each candidate, properly and distinctly labelled. He puts the marble into the hole opposite the name of the candidate he prefers. The marble does not immediately fall into the body of the box, but



Voter casting his vote behind the screen.

Deputy returning officer ready to turn the rod when voter comes out.

into a little hollow in the horizontal rod. The voter then comes out from behind the screen, and the deputy returning officer turns the wooden rod over as one might turn a key in a lock. The hollow in which the marble rests is thus turned upside down and the marble falls through a perpendicular tube, immediately beneath, to the bottom of the box. In falling down this tube it turns round the sprocket of the numbering machine one turn. The numbering machine is the best form of cyclometer used on bicycles, and it is so placed that it will turn around once and once only every time a marble falls through the tube. There is of course, a tube and a counter for each candidate. The marble on reaching the bottom of the box, which is purposely made slanting, runs to one corner and out through the long tin tube to the table, where the deputy and scrutineers are sitting. The voter, by thus seeing the marble come back to the table, is assured that his vote has been properly recorded, and makes way for the next voter.

At the close of the poll the top of the box is taken off, when the counters are in full view, and the number of votes cast for each candidate instantly seen. The numbers on both the counters when added, must equal the number of names of voters on the poll book.

A simple device allows the locking up of the counters, so that they must remain in the same state as when the poll closed. In this way they can be sent in to the returning officer for his official second count, and declaration. In this there can be no marking of ballots so as to be recognized, no spoiling of ballots, no casting of blank ballots, no carrying ballots out of poll and no substitution by any interested party.

Such a box as above described would probably not cost more than \$2 all told. Larger boxes, with more holes for different candidates, would cost proportionately more. Suppose it were to be used at an election in a town or city, where a mayor was being elected for the whole place, and an alderman in each ward. The point might be raised that there would be nothing to prevent a voter who had already voted for mayor and alderman in one ward, going to another ward in which he had a vote, and casting the marble that would there be given him for a mayoralty candidate again, instead of voting for an aldermanic candidate. But this would be got over in the easiest possible way. The marble used in voting for mayor would be smaller than the other. Thus when a voter presented himself, stating that he had already voted for mayor in another ward, he would be given a large marble, which would be too large to pass through the holes opposite the names of mayoralty candidates, and he would thus be forced to vote for an aldermanic candidate. Should he attempt to use a small marble of his own the fraud would instantly be discovered, when the little marble rolled out on the scrutineers' table. There seems to be no difficulty that Mr. Macdonald has not provided for and it is likely that some municipality will use the machine in the next municipal elections and thus put it to a practical test.

NOTE—In the picture showing the machine in operation the bracket on the right side holding a bowl to receive the marble, should be replaced by a table round which the deputy returning officer, poll clerk and scrutineers are sitting. Otherwise the drawings give a very good idea of the machine.

