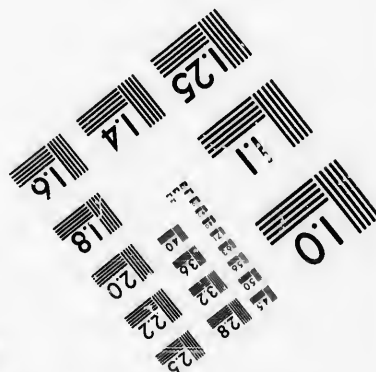
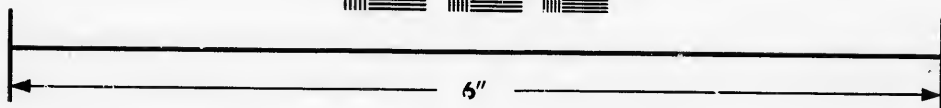
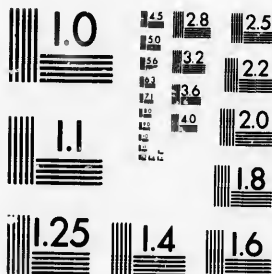


**IMAGE EVALUATION
TEST TARGET (MT-3)**



**Photographic
Sciences
Corporation**

23 WEST MAIN STREET
WEBSTER, N.Y. 14580
(716) 872-4503

15 12.8
14 12
13 11.5
12 11
11 10.5
10 10
9 9.5
8 9
7 8.5
6 8
5 7.5
4 7
3 6.5
2 6
1 5.5
0.8

**CIHM/ICMH
Microfiche
Series.**

**CIHM/ICMH
Collection de
microfiches.**



Canadian Institute for Historical Microreproductions / Institut canadien de microreproductions historiques

10
01
57

© 1986

Technical and Bibliographic Notes/Notes techniques et bibliographiques

The Institute has attempted to obtain the best original copy available for filming. Features of this copy which may be bibliographically unique, which may alter any of the images in the reproduction, or which may significantly change the usual method of filming, are checked below.

L'Institut a microfilmé le meilleur exemplaire qu'il lui a été possible de se procurer. Les détails de cet exemplaire qui sont peut-être uniques du point de vue bibliographique, qui peuvent modifier une image reproduite, ou qui peuvent exiger une modification dans la méthode normale de filmage sont indiqués ci-dessous.

- Coloured covers/
Couverture de couleur
- Covers damaged/
Couverture endommagée
- Covers restored and/or laminated/
Couverture restaurée et/ou pelliculée
- Cover title missing/
Le titre de couverture manque
- Coloured maps/
Cartes géographiques en couleur
- Coloured ink (i.e. other than blue or black)/
Encre de couleur (i.e. autre que bleue ou noire)
- Coloured plates and/or illustrations/
Planches et/ou illustrations en couleur
- Bound with other material/
Relié avec d'autres documents
- Tight binding may cause shadows or distortion along interior margin/
La reliure serrée peut causer de l'ombre ou de la distorsion le long de la marge intérieure
- Blank leaves added during restoration may appear within the text. Whenever possible, these have been omitted from filming/
Il se peut que certaines pages blanches ajoutées lors d'une restauration apparaissent dans le texte, mais, lorsque cela était possible, ces pages n'ont pas été filmées.
- Additional comments: [Printed ephemera] [4] p.
Commentaires supplémentaires:

- Coloured pages/
Pages de couleur
- Pages damaged/
Pages endommagées
- Pages restored and/or laminated/
Pages restaurées et/ou pelliculées
- Pages discoloured, stained or foxed/
Pages décolorées, tachetées ou piquées
- Pages detached/
Pages détachées
- Showthrough/
Transparence
- Quality of print varies/
Qualité inégale de l'impression
- Includes supplementary material/
Comprend du matériel supplémentaire
- Only edition available/
Seule édition disponible
- Pages wholly or partially obscured by errata slips, tissues, etc., have been refilmed to ensure the best possible image/
Les pages totalement ou partiellement obscurcies par un feuillet d'errata, une pelure, etc., ont été filmées à nouveau de façon à obtenir la meilleure image possible.

This item is filmed at the reduction ratio checked below/
Ce document est filmé au taux de réduction indiqué ci-dessous.

10X	12X	14X	16X	18X	20X	22X	24X	26X	28X	30X	32X
								/			

The copy filmed here has been reproduced thanks to the generosity of:

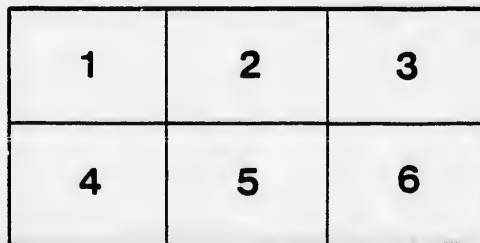
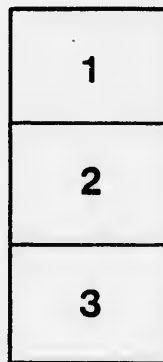
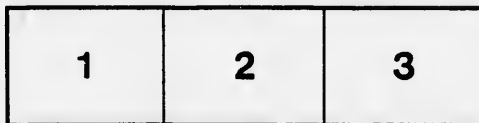
D. B. Weldon Library
University of Western Ontario
(Regional History Room)

The images appearing here are the best quality possible considering the condition and legibility of the original copy and in keeping with the filming contract specifications.

Original copies in printed paper covers are filmed beginning with the front cover and ending on the last page with a printed or illustrated impression, or the back cover when appropriate. All other original copies are filmed beginning on the first page with a printed or illustrated impression, and ending on the last page with a printed or illustrated impression.

The last recorded frame on each microfiche shall contain the symbol \rightarrow (meaning "CONTINUED"), or the symbol ∇ (meaning "END"), whichever applies.

Maps, plates, charts, etc., may be filmed at different reduction ratios. Those too large to be entirely included in one exposure are filmed beginning in the upper left hand corner, left to right and top to bottom, as many frames as required. The following diagrams illustrate the method:



L'exemplaire filmé fut reproduit grâce à la générosité de:

D. B. Weldon Library
University of Western Ontario
(Regional History Room)

Les images suivantes ont été reproduites avec le plus grand soin, compte tenu de la condition et de la netteté de l'exemplaire filmé, et en conformité avec les conditions du contrat de filmage.

Les exemplaires originaux dont la couverture en papier est imprimée sont filmés en commençant par le premier plat et en terminant soit par la dernière page qui comporte une empreinte d'impression ou d'illustration, soit par le second plat, selon le cas. Tous les autres exemplaires originaux sont filmés en commençant par la première page qui comporte une empreinte d'impression ou d'illustration et en terminant par la dernière page qui comporte une telle empreinte.

Un des symboles suivants apparaîtra sur la dernière image de chaque microfiche, selon le cas: le symbole \rightarrow signifie "A SUIVRE", le symbole ∇ signifie "FIN".

Les cartes, planches, tableaux, etc., peuvent être filmés à des taux de réduction différents. Lorsque le document est trop grand pour être reproduit en un seul cliché, il est filmé à partir de l'angle supérieur gauche, de gauche à droite, et de haut en bas, en prenant le nombre d'images nécessaire. Les diagrammes suivants illustrent la méthode.

LONDON P. R. & LITHO. CO.

MICHIGAN, OHIO
CANADIAN CIRCUIT

EIGHTEEN
THEATRES

CLEVELAND, CINCINNATI, BUFFALO,
DETROIT, TORONTO,
TOLEDO, LONDON, HAMILTON,
WOODSTOCK, SAGINAW,
GRAND RAPIDS, BAY CITY AND
JACKSON.

Grand OPERA HOUSE

London.

C. J. WHITNEY.
LESSEE.

A. E. ROOTÉ.
MANAGER

ONTARIO.



W. SMITH.

E. HOLLAND.

W. S. PARTRIDGE.

SMITH & BROS.

THE
LEADING
SANITARY
PLUMBERS
AND
HEATING
ENGINEERS
OF
WESTERN
ONTARIO.

376
RICHMOND STREET,

LONDON.

OPPOSITE GRAND OPERA HOUSE BUILDING.

A full stock of Supplies always on hand.

TELEPHONE 538.

LADIES! THE ONLY WAY TO GET HELP IS THROUGH THE "FREE PRESS" WANT COLUMN.



**Parisian
Steam
Laundry**

73 & 75 DUNDAS STREET.

BRANCH OFFICES:

226 Dundas St. 752 Waterloo. 410 Hamilton Rd.
281 " " 572 Pall Mall. 217 Wellington.
310 " " 380 Richmond. 338 Ridout.
032 " " 485

J. K. SPRY, Manager.

HUESTON'S

LIVERY,

Goupe & Gab Stables

WELLINGTON STREET.

Finest Horses and Carriages in the City.

OPEN DAY AND NIGHT. TELEPHONE 441.

ROBT. HUESTON,

Proprietor.

H. McKENNA,

-FOR-

Choice Cigars, Tobaccos

AND PIPES.

ALWAYS OPEN

..... AFTER THE OPERA.

225 DUNDAS STREET.

FURS!

FURS! + FURS!

TRY

RIVARD

For Ladies' and Gents'

: FINE :- FURS :

Best Assortment in the City.

Rivard

London's Fashionable Hatter
and Furrier,

400 RICHMOND-ST.

WILLIAMS' Pianos CANADA'S FAVORITE

Cannot be excelled for touch, singing quality, delicacy and great power of tone, with highest excellence of workmanship.

ALL THE LATEST VOCAL AND INSTRUMENTAL

MUSIC RECEIVED AS PUBLISHED.

Musical Instruments of all kinds, Strings and Fittings
AT LOWEST PRICES.

R. S. WILLIAMS & SON, 177 DUNDAS STREET,
LONDON, ONT.

J. A. CRODEN, Manager.

.. Play and Players ..

« PROGRAMME »

THREE NIGHTS

TUESDAY, WEDNESDAY, THURSDAY,
NOVEMBER 14, 15, 16. 1893

GILBERT COMIC OPERA CO.,

IN MILLOCKER'S MASTER-WORK,

The Black Hussar

CAST - OF - CHARACTERS

Hackenbeck, magistrate of Trautenfeld, Robert Jenkins
Piffow, his factotum with numerous offices, Geo. W. Williams
Helbert, colonel of the Black Hussar, dis-
guised as an army chaplain.... Fred W. Huntly
Waldmann, adjutant of the Black Hussar,
disguised as a student..... S. S. Partello
Miffin, a tragedian of the Minneger Company,
No 14..... Sidney Cox
Thorilliere, a captain of the French army,
..... Julius Schroder
Rubke, a captain of the Prussian army.... C. Sidney
Wutki, a captain of the Cossacks.. Charles De Vaux
(Programme continued on next page.)

FITZGERALD, SCANDRETT & CO.

169 Dundas Street.

— IMPORTERS OF —

English Biscuits, Fine Sardines,
Olives, Pickles,

— AND ALL LINES OF —

Staple and Fancy Groceries.

ESTABLISHED 1831.

H. DAVIS & SON,
WATCHMAKERS

JEWELLERS

DEALERS IN

Watches, Clocks, Jewellery, Spectacles,
Silver Plated Ware, &c.

170 DUNDAS ST., LONDON, ONT.

W. T. STRONG

Dispensing
Chemist,

184 Dundas Street,

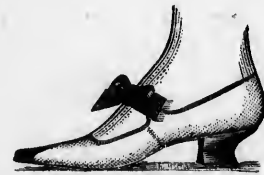
LONDON, - ONTARIO.

BROWN'S

Central Shoe Store,

145 DUNDAS ST.

Our fall stock of 1893 surpasses in style, finish and material anything heretofore attempted in the shoe line in London. We handle all the popular and standard styles; are noted for keeping the most satisfactory goods known to the modern buyer, and have superior advantages in procuring the latest American novelties in shoes. We buy no inferior goods; all our stock is of the highest grade and quality, and we guarantee the best results. We carry a complete assortment from the leading manufacturers in the United States and Canada. We can and will sell first-class Fine Footwear cheaper than any other house in the west; and we have a very large new line of Men's, Youths' and Children's Staple lines which we cannot be undersold. We have just received a large assortment of the most handsome and artistic designs in Ladies' and Gents Dress Shoes, and a beautiful selection of Overgaiters in all the leading colors. Our specialty in Ladies' Evening Shoes of the latest New York shades is certainly charming, and must be seen to be appreciated. Our new lines of Baby Moccasins are really elegant. Mothers should not fail to see them.



See our Windows . .
Inspect our Goods . .
Ascertain our Prices

And we are sure you will be agreeably surprised.

John S. Brown,

TELEPHONE 881.

IF YOU WANT THE BEST, TAKE THE "FREE PRESS." ALL THE NEWS!

IF YOU SEE IT IN THE "LONDON FREE PRESS," IT IS SO!

GO TO
SOUTHCOTTS

FOR YOUR
Overcoating

OR
FALL + SUITING

AND GET SATISFACTION AT
CLOSE PRICES.

361 RICHMOND STREET.

—————
I-I-I-I-I-I-I-I-I-I

PRINTERS
LITHOGRAPHERS
ENGRAVERS

The
London
Printing and
Lithographing
Co'y,

SUCCESSORS TO FREE PRESS
PRINTING AND LITHO.
DEPARTMENTS.

OFFICE.
"FREE PRESS"
BUILDING.

BEST WORK
AT MODERATE
PRICES.

—————
I-I-I-I-I-I-I-I-I-I

TEGUMSEH HOUSE

LONDON.



Directly opposite G.T.R. depot;
street railway past the doors;
convenient to all the wholesale
and retail business houses of
city, making it the most desir-
able hotel in the city; elevator,
and heated throughout with
steam.

Porter in attendance on
arrival of all trains.

RATES, \$2.00 AND \$2.50
PER DAY,

ACCORDING TO LOCATION.

No Extra Charge For Baggage.

C. W. DAVIS, PROP.

GRAHAM BROS

FOR

Fall and Winter Underclothing

ALL SIZES AND WEIGHTS.

CHEAPEST STOCK IN THE CITY.

150 DUNDAS STREET,

«Programme Continued.»

Shadow, a conspirator, disguised as a peddler,
..... Herman Tunner
Bruck, a conspirator, disguised as a beggar,
..... Frank Beham
Eigen, a conspirator, disguised as a rat
catcher..... Frank B. Swift
Mina..... { Hackenbeck's } Miss Addie C. Reed
Rosetta.... { Daughters, } Miss Leona Clark
Barbara, an orphan... Miss Marian Chase
Reka, a maid..... Miss Lilly Swift

«SYNOPSIS»

The scene of the Opera is laid at Trautenfeld, on the
borders of Germany and Russia. Time 1812.

ACT I.—Room in the Magistrate's House.

ACT II.—The Public Square at Trautenfeld.

ACT III.—In the Forest near Trautenfeld.

EXECUTIVE STAFF:

Appell & Cleckner.. Gilbert Opera Co.Ltd., Managers
Tiffany Dugan..... Business Manager
Charles G. Sommers..... Musical Director
Sidney Cox..... Stage Manager



(Programme continued on last page.)

McLEAN'S HARDWARE

FOR

Bissell's Carpet Sweepers.

WE CAN SHOW YOU TWELVE DIFFERENT STYLES SAME
AS ARE NOW DISPLAYED BY THE BISSELL COM-
PANY AT THE WORLD'S FAIR.

CALL AND SEE THESE GOODS

AT

McLEAN'S HARDWARE,
151 Dundas Street.

Wm. Stevely & Son,

—THE LEADING DEALERS IN—

STOVES, RANGES,

AND...
HOUSE FURNISHING GOODS.

OUR STOCK IS THE LARGEST.

OUR PRICES THE LOWEST.

362 RICHMOND STREET.

PHONE 452.

W. T. STRONG,

Dispensing

Chemist,

184 DUNDAS ST.,

LONDON, ONT.

..FOR..

Fine Etchings....

—AND—

Engravings

—TRY—

O. B. GRAVES,

222 DUNDAS STREET.

A WORD

TO the gentlemen patrons of
the GRAND. You can
have your full dress suit pressed
and cleaned up on short notice
by sending it to the LONDON
CLEANING AND REPAIRING
WORKS.

We do not wash your clothes,
but have them renovated by
first-class tailors who repair
them as well.

Parcels called for and deliv-
ered. Office of works in the
Arcade Barber Shop, Richmond
Street. PHONE 981.

LOOK OUT FOR THE "LONDON FREE PRESS" ON ALL EARLY MORNING TRAINS.

GLOVES

SILK & KID

18 to 30 inch,

IN ALL THE NEW SHADES.

TELEPHONE 611.

OPERA
FANS

EVENING GOODS

A. Rolfe

OPERA
HOSE

We show the largest range of S.I.L.K.S IN THE CITY.

OUR NEW Velour Cloth IS THE LATEST.

In all the New Tints, With Trimming to Match.

FINE DRESSMAKING.

202 DUNDAS STREET.

EDY BROS.

The Artistic Photographers,

RECEIVED

Three First Prizes

AND
DIPLOMA

For Finest Display of Photography AT WESTERN FAIR, 1893.

Cabinet Photos, \$3 per doz.

EDY BROS.,

214 DUNDAS STREET.

The HUB

Restaurant,

208 & 205 DUNDAS STREET.

For a NICE LUNCH after the Opera, go to the

Hub Restaurant.

Steaks, Chops, Chicken, Oysters, Etc.

OPEN TILL 12.00 P.M.

J. W. MARTIN, Prop.

(Late of the Martin House)

« Programme Concluded. »

During the evening, incidental to the stage performance, the ORCHESTRA of the Grand Opera House, under the direction of MR. FRED. L. EVANS, will perform the following selections:

OVERTURE—"Sunny South,".....Liseman
LANCERS—"Grand Duchess,".....Offenbach
XYLOPHONE SOLO—"Caucas Polka,".....Muller
WALTZ—"Hochzeits-Klange,".....Strauss
GALOP—"Beauty,".....Warren

The above programme subject to transposition.

N. B.—The Orchestra of the Grand Opera House may be secured for engagements outside the theatre, by applying at or addressing the Box Office.

The Furniture used on stage is supplied by JOHN FERGUSON & SON, Furniture Manufacturers.

NEXT ATTRACTION

ONLY GRAND OPERA OF THE SEASON!

Tuesday, Nov. 21st.

Sale of Seats Friday, Nov. 17.

First appearance in London of the distinguished

MARIE TAVARY

AND HER ENGLISH OPERA COMPANY.

Largest, strongest, most complete and only Grand English Opera Company now in America. Every artist of metropolitan reputation.

MARIE TAVARY,
Brilliant diva of two continents.

MADLE IRENE PEVNY, prima donna, (Royal Opera, Munich),
BARONESS HELEN VON DOENICKEF, (Imperial Opera, Berlin),
SARA CARR, EMIL STEGER, PAYNE CLARKE,
ARTHUR SEATON, CHAS. O. BASSETT,
S. DUDLEY, W.M. STEPHENS,
CONRAD BEHRENS (Imperial Opera, Stockholm),
THOMAS GUISE, SIG. MASCOTTE.

Splendid Chorus. Grand Opera Orchestra.
HERR MAX GABRIEL, Director.

VERDIS TRAGIC OPERA

« TROVATORE. »

Parquet, \$1.00; Circle, \$1.50; Balcony, 75c. and \$1.00 Reserved;
Admission, 50c.; Gallery, 25c.



« BETWEEN THE ACTS »

CONSIDER that the theatrical season and the coal-burning season start about the same time, and make a note of it that we fill all orders, large or small, in a prompt and satisfactory manner.

CAMERON'S

CITY OFFICE, - 421 Richmond St.
YARD, - - Burwell St., at G. T. R.

WE call the attention of our business men to the PROGRAM as an advertising medium. It reaches the class of people whose trade you want, and the way to get that trade is to make yourself known.

BELTON & ROOTE,

BILL POSTING,

DISTRIBUTING

...AND...

GENERAL ADVERTISING AGENTS

Control all the Bill Boards and Dead Walls throughout the City. Population of City, 49,000.

All orders for Bill Posting, Distributing, Card Tacking, and General Advertising for Western Ontario will receive prompt attention.

OFFICE: BOX OFFICE, OPERA HOUSE.

Roses, Carnations,

Palms,

Ferns, Bulbs,

J. GAMMAGE & SONS,

213 Dundas Street.

INDIAN... TEA IMPORTING HOUSE.

CEYLON

NEW BLENDS, DELICIOUS AND ECONOMICAL, AT MODERATE PRICES.

« English Breakfast, » « Five o'clock Tea, » & « Club House » Blends.
60c. 50c. 45c.

These Blends are standard selections of choice Teas. Highly recommended to families for their fine quality and economical properties.

S. FUGE,

IMPORTER OF—
CHOICE TEAS
TELEPHONE 858.

436 Richmond St.
LONDON.

