

**CIHM  
Microfiche  
Series  
(Monographs)**

**ICMH  
Collection de  
microfiches  
(monographies)**



**Canadian Institute for Historical Microreproductions / Institut canadien de microreproductions historiques**

**© 1995**

## Technical and Bibliographic Notes / Notes technique et bibliographiques

The Institute has attempted to obtain the best original copy available for filming. Features of this copy which may be bibliographically unique, which may alter any of the images in the reproduction, or which may significantly change the usual method of filming are checked below.

L'Institut a microfilmé le meilleur exemplaire qu'il lui a été possible de se procurer. Les détails de cet exemplaire qui sont peut-être uniques du point de vue bibliographique, qui peuvent modifier une image reproduite, ou qui peuvent exiger une modifications dans la méthode normale de filmage sont indiqués ci-dessous.

- |   |   |
|---|---|
| <p><input checked="" type="checkbox"/> Coloured covers /<br/>Couverture de couleur</p> <p><input type="checkbox"/> Covers damaged /<br/>Couverture endommagée</p> <p><input type="checkbox"/> Covers restored and/or laminated /<br/>Couverture restaurée et/ou pelliculée</p> <p><input type="checkbox"/> Cover title missing / Le titre de couverture manque</p> <p><input type="checkbox"/> Coloured maps / Cartes géographiques en couleur</p> <p><input checked="" type="checkbox"/> Coloured ink (i.e. other than blue or black) /<br/>Encre de couleur (i.e. autre que bleue ou noire)</p> <p><input type="checkbox"/> Coloured plates and/or illustrations /<br/>Planches et/ou illustrations en couleur</p> <p><input type="checkbox"/> Bound with other material /<br/>Relié avec d'autres documents</p> <p><input type="checkbox"/> Only edition available /<br/>Seule édition disponible</p> <p><input type="checkbox"/> Tight binding may cause shadows or distortion<br/>along interior margin / La reliure serrée peut<br/>causer de l'ombre ou de la distorsion le long de<br/>la marge intérieure.</p> <p><input type="checkbox"/> Blank leaves added during restorations may appear<br/>within the text. Whenever possible, these have<br/>been omitted from filming / Il se peut que certaines<br/>pages blanches ajoutées lors d'une restauration<br/>apparaissent dans le texte, mais, lorsque cela était<br/>possible, ces pages n'ont pas été filmées.</p> <p><input type="checkbox"/> Additional comments /<br/>Commentaires supplémentaires:</p> | <p><input checked="" type="checkbox"/> Coloured pages / Pages de couleur</p> <p><input type="checkbox"/> Pages damaged / Pages endommagées</p> <p><input type="checkbox"/> Pages restored and/or laminated /<br/>Pages restaurées et/ou pelliculées</p> <p><input checked="" type="checkbox"/> Pages discoloured, stained or foxed /<br/>Pages décolorées, tachetées ou piquées</p> <p><input checked="" type="checkbox"/> Pages detached / Pages détachées</p> <p><input checked="" type="checkbox"/> Showthrough / Transparence</p> <p><input type="checkbox"/> Quality of print varies /<br/>Qualité inégale de l'impression</p> <p><input type="checkbox"/> Includes supplementary material /<br/>Comprend du matériel supplémentaire</p> <p><input type="checkbox"/> Pages wholly or partially obscured by errata<br/>slips, tissues, etc., have been refilmed to<br/>ensure the best possible image / Les pages<br/>totalement ou partiellement obscurcies par un<br/>feuillelet d'errata, une pelure, etc., ont été filmées<br/>à nouveau de façon à obtenir la meilleure<br/>image possible.</p> <p><input type="checkbox"/> Opposing pages with varying colouration or<br/>discolourations are filmed twice to ensure the<br/>best possible image / Les pages s'opposant<br/>ayant des colorations variables ou des décolorations<br/>sont filmées deux fois afin d'obtenir la<br/>meilleure image possible.</p> |
|---|---|

This item is filmed at the reduction ratio checked below /  
Ce document est filmé au taux de réduction indiqué ci-dessous.

	10x	12x	14x	16x	18x	20x	22x	24x	26x	28x	30x	32x
									✓			

The copy filmed here has been reproduced thanks to the generosity of:

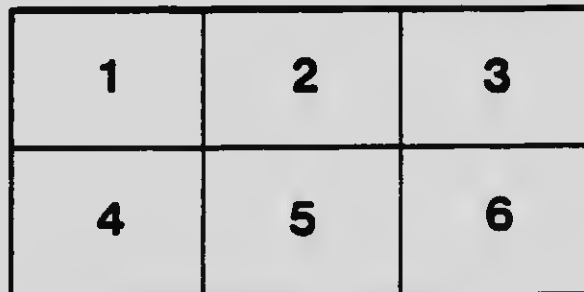
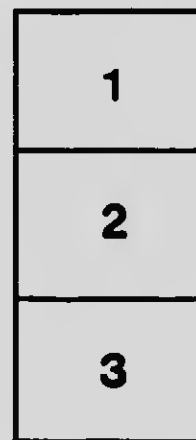
National Library of Canada

The images appearing here are the best quality possible considering the condition and legibility of the original copy and in keeping with the filming contract specifications.

Original copies in printed paper covers are filmed beginning with the front cover and ending on the last page with a printed or illustrated impression, or the back cover when appropriate. All other original copies are filmed beginning on the first page with a printed or illustrated impression, and ending on the last page with a printed or illustrated impression.

The last recorded frame on each microfiche shall contain the symbol  $\rightarrow$  (meaning "CONTINUED"), or the symbol  $\nabla$  (meaning "END"), whichever applies.

Maps, plates, charts, etc., may be filmed at different reduction ratios. Those too large to be entirely included in one exposure are filmed beginning in the upper left hand corner, left to right and top to bottom, as many frames as required. The following diagrams illustrate the method:



L'exemplaire filmé fut reproduit grâce à la générosité de:

Bibliothèque nationale du Canada

Les images suivantes ont été reproduites avec le plus grand soin, compte tenu de la condition et de la netteté de l'exemplaire filmé, et en conformité avec les conditions du contrat de filage.

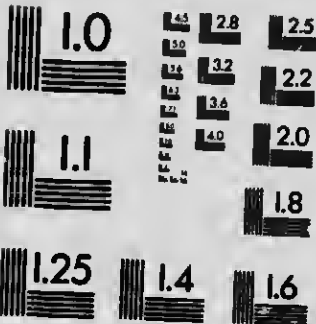
Les exemplaires originaux dont la couverture en papier est imprimée sont filmés en commençant par le premier plat et en terminant soit par la dernière page qui comporte une empreinte d'impression ou d'illustration, soit par le second plat, selon le cas. Tous les autres exemplaires originaux sont filmés en commençant par la première page qui comporte une empreinte d'impression ou d'illustration et en terminant par la dernière page qui comporte une telle empreinte.

Un des symboles suivants apparaîtra sur la dernière image de chaque microfiche, selon le cas: le symbole  $\rightarrow$  signifie "A SUIVRE", le symbole  $\nabla$  signifie "FIN".

Les cartes, planches, tableaux, etc., pouvant être filmés à des taux de réduction différents. Lorsque le document est trop grand pour être reproduit en un seul cliché, il est filmé à partir de l'angle supérieur gauche, de gauche à droite, et de haut en bas, en prenant le nombre d'images nécessaire. Les diagrammes suivants illustrent la méthode.

**MICROCOPY RESOLUTION TEST CHART**

(ANSI and ISO TEST CHART No. 2)



**APPLIED IMAGE Inc**

1853 East Main Street  
Rochester, New York 14609 USA  
(716) 482 - 0300 - Phone  
(716) 286 - 5989 - Fax

Compliments Town of Whitby

See Centre Pages

# Ontario County

Historical



# Souvenir

1854-1904

Issued on the occasion of  
the Jubilee celebration,  
July 1-4, 1904 . . . . .



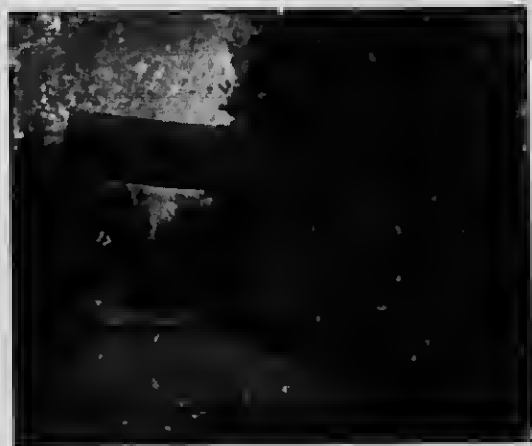


Historical

# SOUVENIR



COUNTY OF ONTARIO.



An Ancient Toll Gate—one of the landmarks

Published on the occasion of the  
County's Jubilee Celebration,  
July 1-4, 1904



THE  
NEWSTONE  
PRESS  
WHITBY



FC 3095

05

H57

1907

\*\*\*



ONTARIO, the Keystone County, is wedged in between Durham and Victoria on the east, York and Simcoe on the west, and rock-ribbed Muskoka on the north, while its southern shores are washed by Lake Ontario.

This county was first visited by white men in the month of August two hundred and eighty-nine years ago (1615).

Champlain, the French governor and explorer, accompanied by Caron and other Recollect missionaries at that time, ascended the Ottawa river, crossed to Lake Nipissing, descended the French river to Georgian Bay. Coasting along this he reached the Severn river and thence through Lake Couchiching he came to the country of the Huron Indians. He agreed to join them in an attack on the Iroquois, south-west of Oswego, in New York State. Passing through Lake Simcoe to the Taub river, which separates Mara and Thorah townships, he reached Balsam Lake, thence down the waters of the Trent to Lake Ontario. Afterwards communication with Lake Huron was made through Whitby and Reach townships and through the Horege river in Pickering township to the Holland river and Lake Simcoe. Through this latter route another expedition of French and Indians passed from Lake Huron to Niagara under instructions from the French Commandant at Quebec to avoid Fort Rouille, now Toronto, by taking this route.

The first school in the Province was established at Frenchman's Bay, in Pickering, in 1669-1670, by Fenelon and Trouve, Sulpician missionaries, who wintered there and gathered the Indians into a school. In 1778 Ontario county formed part of the District of Nassau. In 1798 it became part of the Home District, the first Registry office for which was at Niagara.

The first white settler was Benjamin Wilson, who settled in East Whitby, east of Ohawa harbor, in 1778. Some of his descendants are still living in the county.

The first "Town meeting for choosing the Town officers and other Regulators for the Towns of Whitby and Pickering" was held in 1801. The first meeting for the like purpose for the Township of Pickering alone was held in 1811. In these days there were County Lieutenants who had power to appoint Justices of the Peace and Militia Officers. In 1804 the County Lieutenant for York County was the Honorable David Wm. Smith, who in some way acquired the title to a great many parcels of land in the County. In 1851 this County was united to York and Peel for judicial and municipal purposes. On the 14th of March, 1852, the Governor General's proclamation forming the Provisional County of Ontario was issued, and Whitby named as the County Town. On the 3rd of May, 1852, the Reeves and Deputies met in the brick school house at Port Whitby, and organized the provisional County. Afterwards the meetings until the final separation from York and Peel were held in the Free Church, now the residence of James Shaw, Whitby. The proclamation dissolving the union of the Counties and erecting Ontario into an independent county was issued December 30th, 1853.

The County was organized in January, 1854, with nine minor municipalities, represented by nine Reeves and four deputy Reeves. There are now seventeen minor municipalities and two Police Villages in the County. In 1891 they were represented by 17 Reeves and 18 deputies. Now under the County Councils Act the minor municipalities are grouped into 7 divisions and represented by 14 members.

The Township of Georgina, lying to the north of Scott township, was a part of the Provisional county, but in 1853 it was by the Act 16 Vic., cap. 90, transferred from the County of Ontario to the County of York.

The population of the County in 1854 was about 30,000. In 1861 it was 41,565. In 1871 it was 45,180. In 1903 it was estimated at 38,921, but is actually much larger.

The Town of Whitby was organized as a separate municipality in January, 1855.

The Township of Scugog was separated from Reach in June, 1855, and organized as a separate municipality in January, 1856. The first white settler in this Township was a man named Graxton. It contains an Indian reservation of 800 acres on which a small tribe of Mississauga Indians still resides.

The Township of East Whitby was separated from the Township of Whitby and organized as a separate municipality in January, 1858. The first settler was Benjamin Wilson, above named.

Rama township was separated from Mars and organized as a separate municipality in January, 1863. The earliest settlers were Captain Allan McPherson, of the Sicilian Regiment, and Captains Garnet, Pass, Rooke, Coppinger and Mr. John McKinnon. It contains a reservation occupied by Chippewa Indians.

The Village of Port Perry was detached from Reach June 9th, 1871. Organized as a separate municipality in January, 1872.

The Village of Uxbridge was detached from Uxbridge Township June, 1872. Organized as a separate municipality January, 1873. It was incorporated as a town in 1883.

The Village of Cannington was detached from the Township of Brock in June, 1878. Organized as a separate municipality in January, 1879.

The Village of Beaverton was detached from the Township of Thorah in June, 1884, and organized as a separate municipality in January, 1885. The first settlers were Donald Cabler and Kenneth Cameron.

The first settler in the township of Brock was James Reekie. The date October 10th, 1818. In June, 1900, the Village of Sunderland, in the Township of Brock, was erected into a Police Village.

The first settler in the Township of Reach was Reuben Crandell. The date May, 1821.

The Township of Pickering was formerly called Edinburgh. The first settler was a man named William Peck, who settled there before 1801. On the day of June, 1900, the former Village of Canton, on Duffins' Creek, was erected into a Police Village.

The first settler in the Township of Uxbridge was Dr. Beswick in the year 1806.

The first settler in the Township of Scott was Evan Jones, a Welshman. Date of settlement, 1830.

The first settlers in the Township of Thorah were — White and a British officer, Ensign Turner.

The first settler in the Township of Mara was Patrick Corrigan, 1823. The second settler, Arthur Kelly, took up his location in 1827, and died at the age of 106.

The County of Ontario has three towns. Whitby, Oshawa and Exelbridge.

Whitby is the County Town. Here are located the County buildings including the Court House, Gaol and Registry Office, the County of Ontario House of Refuge and Industrial farm, the Armory of the 34th Regiment, and one of the Government Experimental Fruit Farms. It is an educational centre with three well equipped public schools, an efficient Roman Catholic Separate School, and one of the Ontario County Model Schools. The Whitby Collegiate Institute was established as a Grammar School in 1849, and has during its long history held a foremost place among the High Schools and Collegiate Institutes of the Province.

The Ontario Ladies' College was established in 1874 in Trafalgar Castle, the former residence of Sheriff N. G. Reynolds. Two very extensive additions, involving a large expenditure, and aggregating with the original outlay upwards of a quarter of a million dollars, have since been made. It is so well equipped and has such a numerous and able staff of instructors that it has attracted pupils from all parts of the Dominion and the United States.

The Town of Oshawa has been appropriately called the Manchester of Canada. It has a number of the largest manufacturing establishments for pianos, carriages, malleable iron work, and woollen goods in the Dominion, besides many smaller but prosperous industries. It has an excellent High School and three well graded public schools, and Bishop Bethune Ladies' College. The latter occupies Ellsmere Hall, the handsome residence of the late Hon. T. N. Gibbs. There is also a Convent school in connection with the Roman Catholic church.

The Town of Exelbridge has several important milling and manufacturing establishments. It is one of the best market towns in the Province. It has an excellent High and a well graded Public school.

Port Perry, Cannington and Beaverton are thriving villages. The former has an excellent High School and Public Schools, and is the seat of one of the Model Schools of the County. The successful co-education College of the Fricols is located at Pickering.

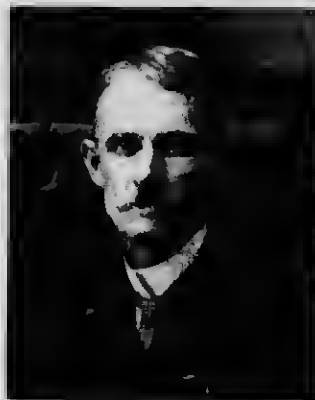
The County of Ontario was well timbered. The energy of its lumbermen in former years supplied a large amount of timber and lumber for the Province and for export to Great Britain and the United States. It was formerly one of the best grain growing counties in the Province and next to Brampton, Prince Albert was the largest grain market in the Province. The pioneer in progressive agriculture, the County of Ontario from the first has been noted for the energy and skill of its importers and breeders of live stock, and now holds a first place in the Province in this respect, having regard to its area. It also holds a leading position amongst the fruit raising counties.

The past history of the County of Ontario, as well as its present condition and prospects for the future, amply prove the wisdom shown in the selection of its motto, "*Peace, Plenty, Progress.*"



THE COUNTY COUNCIL, 1903 4

George W. Dryden, Registrar



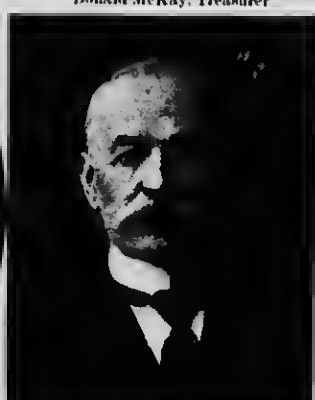
J. E. Farewell, K.C., Clerk



J. F. Paxton, Sheriff



Donald McKay, Treasurer



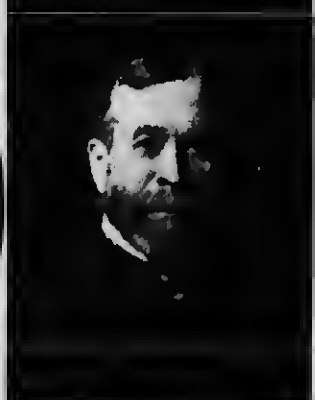
L. T. Barclay, Registrar Surrogate Court



His Honor Judge McCrimmon



G. Y. Smith, Judge Surrogate Court



His Honor Judge McIntyre

JUDICIAL AND COUNTY OFFICERS



COUNTY COURT HOUSE, WHITBY



COUNTY REGISTRY OFFICE, WHITBY



RESIDENCE OF MR. ARTHUR JOHNSON, GREENWOOD



"THISTLE HA," RESIDENCE OF MR. JOHN MILLER, BROUGHAM



LIEUT. COL. FAREWELL AND OFFICERS OF THE 34TH REGIMENT

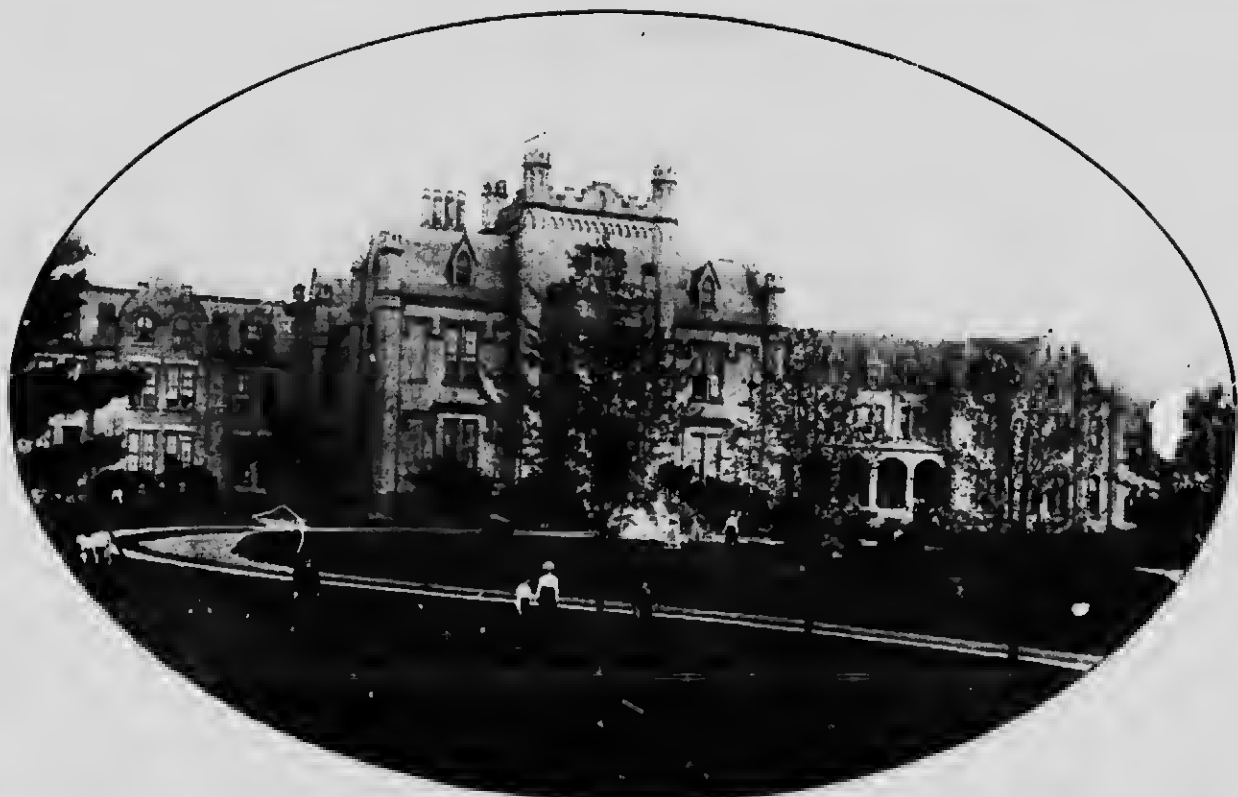




BAPTIST CHURCH, OSHAWA



PRESBYTERIAN CHURCH, OSHAWA



ONTARIO LADIES' COLLEGE, WHITBY



PORT PERRY, FROM LAKE STURGEON



CLAREMONT, LOOKING FROM THE WEST



BISHOP BETHUNE COLLEGE, OSHAWA



RESIDENCE OF MR. J. H. DOWNEY, WHITBY



BROOK STREET SOUTH, WHITBY, AT TIME OF THE QUEEN'S JUBILEE



RESIDENCE OF JAMES SMITH, WIRRY



RESIDENCE OF HIS HONOR JAMES McLEARY, WIRRY

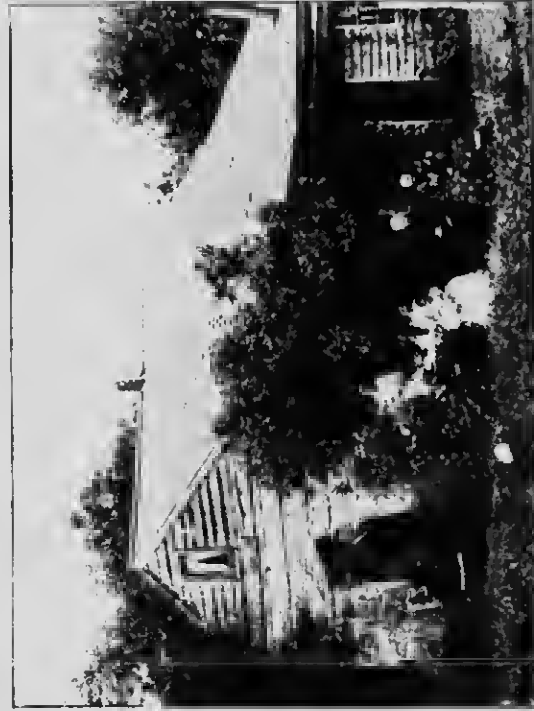


QUEEN STREET EAST, PORT PERRY



QUEEN STREET WEST, PORT PERRY





ESDEN TURNER'S HOUSE

The second house built in the township of Thorah



PRESBYTERIAN CHURCH, UTOCA

The third church building erected in Reach township



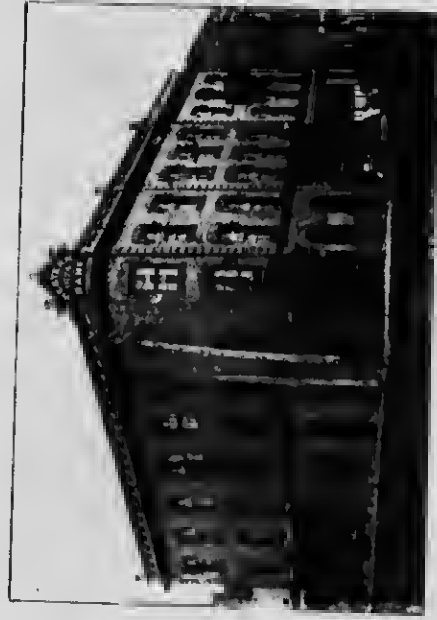
BROCK STREET NORTH WHITTY, DURING THE QUEEN'S JUBILEE



NEW G.T.R. BRIDGE, PICKERING



NEW STATION, WHITBY JUNCTION



THE WESTERN BANK OF CANADA, OSHAWA



W. H. THOMAS' RESIDENCE, OSHAWA



"MAPLE SHADE," RESIDENCE OF HON. JOHN DIVYDEN



MODEL BARN ERECTED IN 1963 BY HON. JOHN DRYDEN



ROUGE HILLS AND BRIDGE



LOOKING SOUTH ON DUFFIN'S CREEK, PICKERING

# WHITBY INVITES YOU

**WHITBY**, 30 miles east of Toronto, on the main line of the Grand Trunk, is one of the most desirable places to be found in Ontario for permanent residence, and is a most delightful spot in which to spend a summer outing.

The town has a municipal water and electric light service, with lighting available all night. The Bell Telephone Company gives a 24 hour a day service. There are excellent public schools, a Collegiate Institute which ranks amongst the best in the Province, and the Ontario Ladies' College, known all over America, is also located here.

There is no crowding in this town. All the houses have abundance of yard room, and Jesse Collings' ideal of "three acres and a cow" can be easily realized by any who so desires. Because there are such wide air spaces, and because of the elevated situation and peculiar geological formation, no town is freer of contagious disease, indeed not a single case of typhoid has ever originated within our borders.

In natural and acquired beauty few places possess greater attractions. There are orchards and gardens everywhere. From any one of a dozen elevations the eye can take in the sweep of Lake Ontario on the one side and on the other the rich meadow lands, fruitful orchards, and the tree-clad slopes of the ridges to the north.

For motoring or driving, better facilities cannot be had in America. North, east and west are perfect





BIRD'S EYE VIEW OF A PORTION OF WHITBY

roads, and each gentle hill crowned by the way opens a fresh vista of beauty. How much is offered in this way will be made clearer from the illustrations in the main body of the booklet, which was prepared primarily as a souvenir of the 50th anniversary of the formation of the County of which Whitby is the municipal capital. Claremont, Port Perry on Lake Scugog, and Pickering are all within easy driving distance, and any one of these points can be reached within an hour by auto. Farm residences similar to that of the Hon. John Dryden, and views such as that in the illustration of Rouge Hills and the seventh concession, Whitby, may be had on any of these runs.

The lake on which the town fronts affords perfect facilities for boating, bathing and fishing, and in the immediate neighborhood are excellent trout streams that will prove a delight to disciples of Isaac Walton. Permanent residents can secure at exceedingly moderate prices excellent homes already built, or admirable sites on which to build. For summer visitors there is a choice between hotels and private houses.

Whitby's present transportation facilities are good, and more extended facilities are in view. Four Grand Trunk trains make daily connection each way with Toronto. The York Radial will give an electric service to the city in the near future, and the C.P.R. last winter surveyed a route for its new line to Montreal through the centre of the town.

In brief, Whitby offers all the conveniences of city life coupled with the open air and freedom of the country, and it is within an hour's ride by rail of the Provincial metropolis, and only three hours from Niagara Falls. To this little city of homes we extend you a cordial welcome.

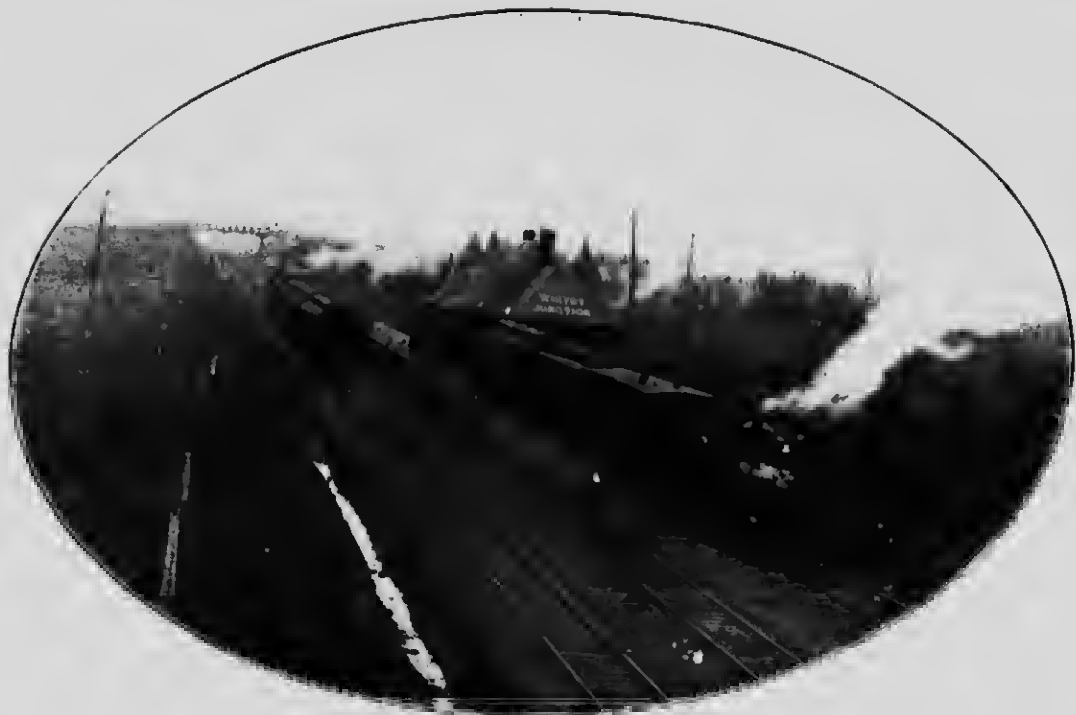
Further information will be gladly supplied on request to—

A. W. JACKSON, Mayor.

Whitby, Ontario, June, 1907.



BATHING SCENE AT HAYDENSORE PARK BEACH, WHITBY



**NEW STATION AND GROUNDS AT WHITBY JUNCTION**  
Between Brock and Centre Streets, Northern train to right, local to Toronto to left



CHRISTIAN CHURCH, OSHAWA



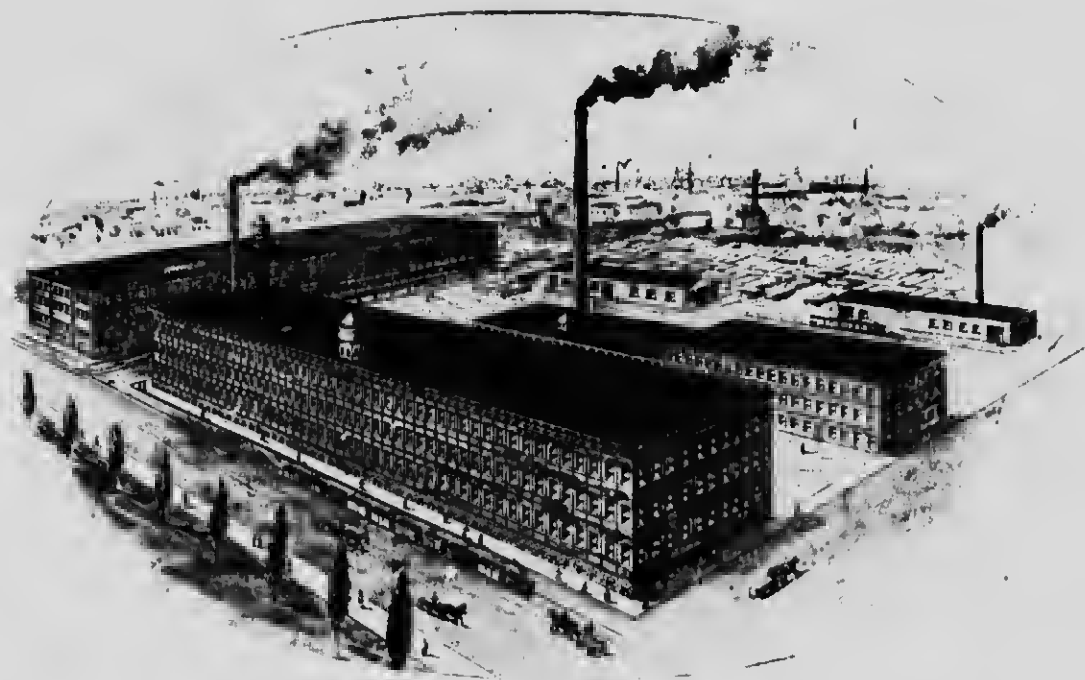
SIMCOE STREET METHODIST CHURCH, OSHAWA



"EVERETT," RESIDENCE OF THE LATE GEORGE McCHILLENCO, WINTON



RESIDENCE OF MR. E. T. BARCLAY, WINTON



McLAUGHLIN CARRIAGE CO., OSHAWA



WHITBY COLLEGIATE INSTITUTE





COUNTY HOUSE OF RUTHERFORD COUNTY, WINNAB



WHITEY HARBOR AND ELEVATORS



RURAL BEAUTY -VIEW ON 7TH CONCESSION WHITBY



LOOKING NORTH-EAST FROM PORT PERRY—SCUDDER LAKE AND ISLAND



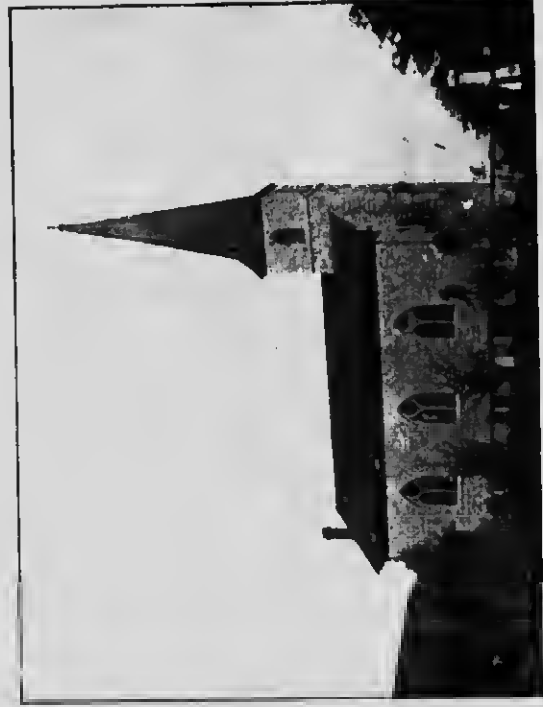
JAMES CARNEGIE'S STEAMER, ON LAKE SCUDDER



"GLADSTONE VILLA," OSHAWA, RESIDENCE    MAYOR FRED L. FOWKE



ST. ANDREW'S (PRESBYTERIAN) CHURCH, WHITBY



ST. JOHN'S (ANGLICAN) CHURCH, PORT WHITBY



VIEW OF HEYDENSHORE PARK, NEW POWER HOUSE, HARBOR, ETC., WHITBY

The engraver, in enlarging the photo, reversed the scene



PICKERING PUBLIC SCHOOL



ARMORY OF THE 34TH REGIMENT, WHITBY



METHODIST TABERNALE, WHITBY



ALL SAINTS' CHURCH, WHITBY





BOBSON'S PEAT WORKS NEAR BEAVERTON



CAMERON STREET, CANNINGTON, 40 YEARS AGO



TOWN HALL, WHITBY



RESIDENCE OF THE LATE JAMES I. DAVIDSON. BALSAM



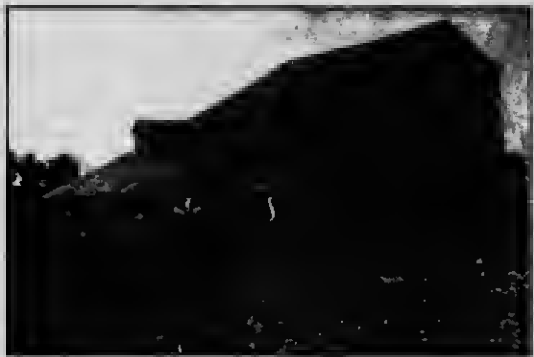
ST. ANDREW'S PRESBYTERIAN CHURCH. PICKERING



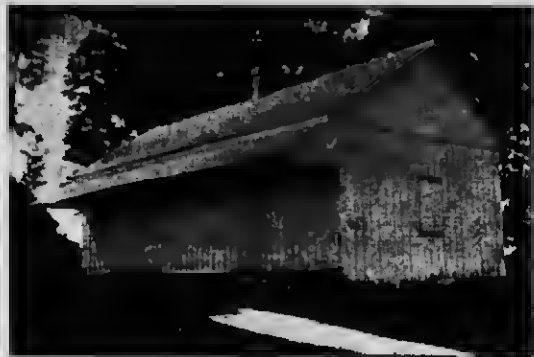
RESIDENCE OF MR. W. G. WAITERS, WHITEY



"HOUNDEN," WHITEY, RESIDENCE OF MR. F. HOWARD ANNES



GAMBLE BARN, UXBRIDGE



QUAKER CHURCH  
1st church built in Uxbridge Township, still in use



THE JAMES' HOUSE  
The oldest house in Uxbridge Township



ST. GEORGE'S CHURCH, OSRAWA



DR. WARREN'S RESIDENCE, WHITBY



RESIDENCE OF MR. JAMES RUTLEDGE, WHITBY



RESIDENCE OF MR. GEO. A. ROSS, WHITBY



TOWN HALL, CANNINGTON



**THE CRANDELL HOUSE, FIRST HOUSE ERECTED IN THE TOWNSHIP OF REACH**  
Here were born the first white children in the Township

Site at present{time





CATHOLIC CHURCH, OSHAWA



MRS. CHRISTIE, AGED 95  
Mother of County Councillor Peter Christie



METCALF STREET METHODIST CHURCH, OSHAWA



DAVIDSON BANK AND WATSON'S BLOCK, BROCK STREET, WHITBY



RESIDENCE OF MR. JAS. SHAW, WHITBY  
The meeting place of the County Council from May, 1852, until January, 1854



THE LYNDE HOUSE, WHITBY



