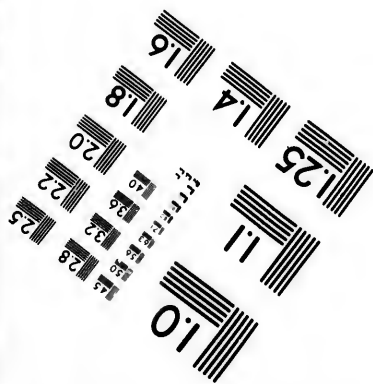
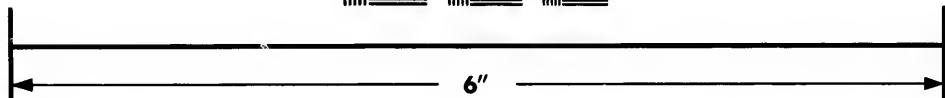
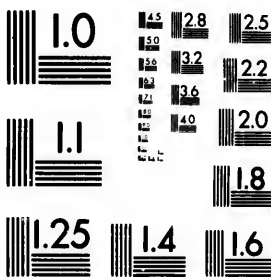


**IMAGE EVALUATION
TEST TARGET (MT-3)**



**Photographic
Sciences
Corporation**

23 WEST MAIN STREET
WEBSTER, N.Y. 14580
(716) 872-4503



**CIHM/ICMH
Microfiche
Series.**

**CIHM/ICMH
Collection de
microfiches.**



Canadian Institute for Historical Microreproductions / Institut canadien de microreproductions historiques



© 1983

Technical and Bibliographic Notes/Notes techniques et bibliographiques

The Institute has attempted to obtain the best original copy available for filming. Features of this copy which may be bibliographically unique, which may alter any of the images in the reproduction, or which may significantly change the usual method of filming, are checked below.

L'Institut a microfilmé le meilleur exemplaire qu'il lui a été possible de se procurer. Les détails de cet exemplaire qui sont peut-être uniques du point de vue bibliographique, qui peuvent modifier une image reproduite, ou qui peuvent exiger une modification dans la méthode normale de filmage sont indiqués ci-dessous.

- Coloured covers/
Couverture de couleur
- Covers damaged/
Couverture endommagée
- Covers restored and/or laminated/
Couverture restaurée et/ou pelliculée
- Cover title missing/
Le titre de couverture manque
- Coloured maps/
Cartes géographiques en couleur
- Coloured ink (i.e. other than blue or black)/
Encre de couleur (i.e. autre que bleue ou noire)
- Coloured plates and/or illustrations/
Planches et/ou illustrations en couleur
- Bound with other material/
Relié avec d'autres documents
- Tight binding may cause shadows or distortion along interior margin/
La reliure serrée peut causer de l'ombre ou de la distorsion le long de la marge intérieure
- Blank leaves added during restoration may appear within the text. Whenever possible, these have been omitted from filming/
Il se peut que certaines pages blanches ajoutées lors d'une restauration apparaissent dans le texte, mais, lorsque cela était possible, ces pages n'ont pas été filmées.
- Additional comments:/
Commentaires supplémentaires:

- Coloured pages/
Pages de couleur
- Pages damaged/
Pages endommagées
- Pages restored and/or laminated/
Pages restaurées et/ou pelliculées
- Pages discoloured, stained or foxed/
Pages décolorées, tachetées ou piquées
- Pages detached/
Pages détachées
- Showthrough/
Transparence
- Quality of print varies/
Qualité inégale de l'impression
- Includes supplementary material/
Comprend du matériel supplémentaire
- Only edition available/
Seule édition disponible
- Pages wholly or partially obscured by errata slips, tissues, etc., have been refilmed to ensure the best possible image/
Les pages totalement ou partiellement obscurcies par un feuillet d'errata, une pelure, etc., ont été filmées à nouveau de façon à obtenir la meilleure image possible.

This item is filmed at the reduction ratio checked below/
Ce document est filmé au taux de réduction indiqué ci-dessous.

10X	14X	18X	22X	26X	30X
<input type="checkbox"/>	<input type="checkbox"/>	<input type="checkbox"/>	<input checked="" type="checkbox"/>	<input type="checkbox"/>	<input type="checkbox"/>
12X	16X	20X	24X	28X	32X

The copy filmed here has been reproduced thanks to the generosity of:

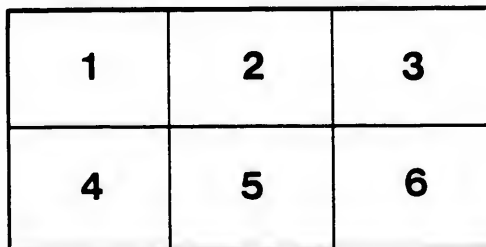
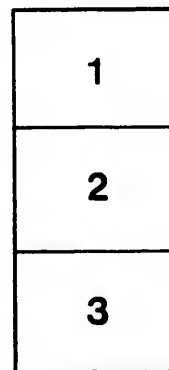
New Brunswick Museum
Saint John

The images appearing here are the best quality possible considering the condition and legibility of the original copy and in keeping with the filming contract specifications.

Original copies in printed paper covers are filmed beginning with the front cover and ending on the last page with a printed or illustrated impression, or the back cover when appropriate. All other original copies are filmed beginning on the first page with a printed or illustrated impression, and ending on the last page with a printed or illustrated impression.

The last recorded frame on each microfiche shall contain the symbol \rightarrow (meaning "CONTINUED"), or the symbol ∇ (meaning "END"), whichever applies.

Maps, plates, charts, etc., may be filmed at different reduction ratios. Those too large to be entirely included in one exposure are filmed beginning in the upper left hand corner, left to right and top to bottom, as many frames as required. The following diagrams illustrate the method:



L'exemplaire filmé fut reproduit grâce à la générosité de:

New Brunswick Museum
Saint John

Les images suivantes ont été reproduites avec le plus grand soin, compte tenu de la condition et de la netteté de l'exemplaire filmé, et en conformité avec les conditions du contrat de filmage.

Les exemplaires originaux dont la couverture en papier est imprimée sont filmés en commençant par le premier plat et en terminant soit par la dernière page qui comporte une empreinte d'impression ou d'illustration, soit par le second plat, selon le cas. Tous les autres exemplaires originaux sont filmés en commençant par la première page qui comporte une empreinte d'impression ou d'illustration et en terminant par la dernière page qui comporte une telle empreinte.

Un des symboles suivants apparaîtra sur la dernière image de chaque microfiche, selon le cas: le symbole \rightarrow signifie "A SUIVRE", le symbole ∇ signifie "FIN".

Les cartes, planches, tableaux, etc., peuvent être filmés à des taux de réduction différents. Lorsque le document est trop grand pour être reproduit en un seul cliché, il est filmé à partir de l'angle supérieur gauche, de gauche à droite, et de haut en bas, en prenant le nombre d'images nécessaire. Les diagrammes suivants illustrent la méthode.

tails
du
odifier
une
image

rrrata
to

pelure,
n à

819.12
J12



Christmas in the Sanctuary

By I. ALLEN JACK

SAINT JOHN, N. B., CANADA.
THE SAINT JOHN GLOBE PUBLISHING COMPANY, LIMITED.
1897.



'Tis winter, but to faithful hearts 'tis spring;
And truly God, as longer grow the days
And stronger the sun's beams, casts His bright rays
Upon His Church's swiftly dawning year,
To bid us forth from Advent gloom and fear
And lift our hearts to Him and joyful sing.

Our happy souls mid vernal musings dwell,
And all responsive, buds and blossoms bright,
Of lovely forms and varied hues, mid light
From countless flames, round cross and altar meet
The wistful eye, through veil of incense sweet;
While, from the organ, chords melodious swell.

O bless'd fulfilment of the prayers and dreams
Of men of old, when, in the silent night,
The shepherds heard the voice of angel bright;
And hast'ning saw the Shepherd born to lead
His docile sheep to pastures green to feed,
In certain safety, by the quiet streams.

But lo! the myst'ries from their eyes concealed:
The simple, wond'ring shepherds but a child
Beheld; nor knew that He, Who lay and smiled
So sweet, was Prophet, Priest, Redeemer, King,
And Spotless Lamb for the world's ransoming
Ere long, by desert seer, to be revealed.

O well may little children eager make
This blissful day their own: O may they learn,
Who early towards the Blessed Infant turn,
To imitate His gentle, gracious charms:
What joy to those uplifted by His arms
In age, who still are children for His sake.

What those poor shepherds saw, we seem to see;
The queen-like, calm-eyed, virgin-mother pure;
Her spouse, once justly questioning, now sure
Of all the angel told; and Him Whose birth
Brought mercy from high heav'n to sinful earth;
The holiest type of happy family.

And well may we before God's altar bring,
With our memorial of Christ's natal day,
Prayers for our kin and dear ones far away;
Yea, e'en for those, unseen, who waiting rest
Expectant of His promise to the blest,
When partings dread will cease and sorrowing.

But all in vain we gather for the feast,
If we, though freely fed, omit to feed
The hungry, or supply the pressing need
Of those who thirst, or far from kindred dwell,
Or are unclad; or cheer, by cot, in cell,
Christ's pining brothers, even to the least.

O gracious God, Who did'st all-pitying give
Thy peace, beyond man's ken, by angels' song,
To all who for the heavenly gift should long;
Grant us this choicest blessing from above,
Our hearts and minds, in knowledge and in love
Of Thee, to keep; that we in Thee may live.

