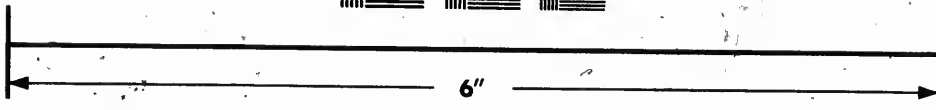
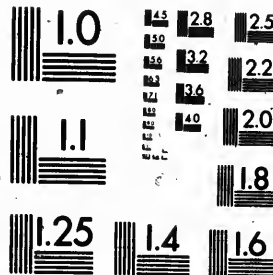


**IMAGE EVALUATION
TEST TARGET (MT-3)**



Canada



**Photographic
Sciences
Corporation**

23 WEST MAIN STREET
WEBSTER, N.Y. 14580
(716) 872-4503

**CIHM
Microfiche
Series
(Monographs)**

**ICMH
Collection de
microfiches
(monographies)**



Canadian Institute for Historical Microreproductions / Institut canadien de microreproductions historiques

© 1992

Technical and Bibliographic Notes / Notes techniques et bibliographiques

The Institute has attempted to obtain the best original copy available for filming. Features of this copy which may be bibliographically unique, which may alter any of the images in the reproduction, or which may significantly change the usual method of filming, are checked below.

L'Institut a microfilmé le meilleur exemplaire qu'il lui a été possible de se procurer. Les détails de cet exemplaire qui sont peut-être uniques du point de vue bibliographique, qui peuvent modifier une image reproduite, ou qui peuvent exiger une modification dans la méthode normale de filmage sont indiqués ci-dessous.

- Coloured covers/
Couverture de couleur
- Covers damaged/
Couverture endommagée
- Covers restored and/or laminated/
Couverture restaurée et/ou pelliculée
- Cover title missing/
Le titre de couverture manque
- Coloured maps/
Cartes géographiques en couleur
- Coloured ink (i.e. other than blue or black)/
Encre de couleur (i.e. autre que bleue ou noire)
- Coloured plates and/or illustrations/
Planches et/ou illustrations en couleur
- Bound with other material/
Relié avec d'autres documents
- Tight binding may cause shadows or distortion along interior margin/
La reliure serrée peut causer de l'ombre ou de la distorsion le long de la marge intérieure
- Blank leaves added during restoration may appear within the text. Whenever possible, these have been omitted from filming/
Il se peut que certaines pages blanches ajoutées lors d'une restauration apparaissent dans le texte, mais, lorsque cela était possible, ces pages n'ont pas été filmées.

- Coloured pages/
Pages de couleur
- Pages damaged/
Pages endommagées
- Pages restored and/or laminated/
Pages restaurées et/ou pelliculées
- Pages discoloured, stained or foxed/
Pages décolorées, tachetées ou piquées
- Pages detached/
Pages détachées
- Showthrough/
Transparence
- Quality of print varies/
Qualité inégale de l'impression
- Continuous pagination/
Pagination continue
- Includes index(es)/
Comprend un (des) index
- Title on header taken from: /
Le titre de l'en-tête provient:
- Title page of issue/
Page de titre de la livraison
- Caption of issue/
Titre de départ de la livraison
- Masthead/
Générique (périodiques) de la livraison

Additional comments:
Commentaires supplémentaires:

There are some creases in the middle of the pages. Docket title page is bound in as last page in book but filmed as first page on fiche.

This item is filmed at the reduction ratio checked below/
Ce document est filmé au taux de réduction indiqué ci-dessous.

10X	14X	18X	22X	26X	30X
<input type="checkbox"/>	<input type="checkbox"/>	<input type="checkbox"/>	<input type="checkbox"/>	<input checked="" type="checkbox"/>	<input type="checkbox"/>
12X	16X	20X	24X	28X	32X

The copy filmed here has been reproduced thanks to the generosity of:

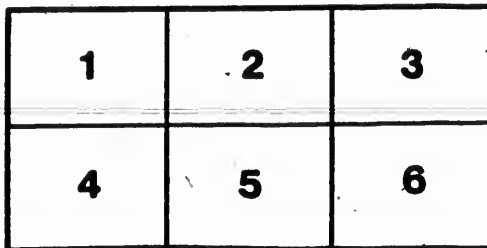
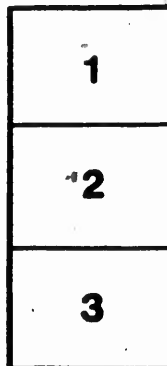
Manuscript Division,
National Archives of Canada

The images appearing here are the best quality possible considering the condition and legibility of the original copy and in keeping with the filming contract specifications.

Original copies in printed paper covers are filmed beginning with the front cover and ending on the last page with a printed or illustrated impression, or the back cover when appropriate. All other original copies are filmed beginning on the first page with a printed or illustrated impression, and ending on the last page with a printed or illustrated impression.

The last recorded frame on each microfiche shall contain the symbol \rightarrow (meaning "CONTINUED"), or the symbol ∇ (meaning "END"), whichever applies.

Maps, plates, charts, etc., may be filmed at different reduction ratios. Those too large to be entirely included in one exposure are filmed beginning in the upper left hand corner, left to right and top to bottom, as many frames as required. The following diagrams illustrate the method:



L'exemplaire filmé fut reproduit grâce à la générosité de:

Division des manuscrits,
Archives nationales du Canada

Les images suivantes ont été reproduites avec le plus grand soin, compte tenu de la condition et de la netteté de l'exemplaire filmé, et en conformité avec les conditions du contrat de filmage.

Les exemplaires originaux dont la couverture en papier est imprimée sont filmés en commençant par le premier plat et en terminant soit par la dernière page qui comporte une empreinte d'impression ou d'illustration, soit par le second plat, selon le cas. Tous les autres exemplaires originaux sont filmés en commençant par la première page qui comporte une empreinte d'impression ou d'illustration et en terminant par la dernière page qui comporte une telle empreinte.

Un des symboles suivants apparaîtra sur la dernière image de chaque microfiche, selon le cas: le symbole \rightarrow signifie "A SUIVRE", le symbole ∇ signifie "FIN".

Les cartes, planches, tableaux, etc., peuvent être filmés à des taux de réduction différents. Lorsque le document est trop grand pour être reproduit en un seul cliché, il est filmé à partir de l'angle supérieur gauche, de gauche à droite, et de haut en bas, en prenant le nombre d'images nécessaire. Les diagrammes suivants illustrent la méthode.

26 April 1830

IN APPEAL.

APRIL TERM, 1830.

WHITE,

and

APPELLANT,

CAMERON,

RESPONDENT,

Appellant's Case.

MR. AYLWIN of Counsel
For Appellant.

60
PROVINCE OF }
LOWER CANADA }

COURT OF APPEALS.

THOMAS WHITE,

and

APPELLANT,

EDWARD ANDREW CAMERON,

RESPONDENT.

Case for the Appellant.

THIS appeal has been instituted from a judgment of the court of King's Bench for the District of Quebec of February term last, by which a sale of certain immoveable property is ordered at the *folle enchère* of the appellant, and his application for leave to file a petition in answer to the proceedings had in the Court below at the instance of the Respondent, is discharged with costs.

The facts upon which this case stands are these :—Previously to the purchase by the appellant of the real property, a re-sale whereof is ordered at the appellant's *folle enchère*, it was agreed upon between him and the respondent, that if the appellant purchased the said property, the respondent would allow the amount of his certain mortgage upon the property, secured by *privilege de bailleur de fonds*, to remain in his hands at interest, upon the faith of which promise the appellant purchased the property in question.

That the appellant has satisfied all the parties collocated in the Prothonotary's report of *distribution*, excepting the respondent, and has moreover paid into the hands of the Sheriff a sum of pounds, adequate to cover all law expences—notwithstanding which the respondent has refused to allow the amount of his collocation to remain in the appellant's hands, and has obtained an order for a re-sale of the property.

In answer to the respondent's application in the court below, which was made in the shape of a rule *nisi*, the appellant filed an affidavit, ~~notwithstanding~~ ^{substantiated} all the above facts, and a petition reciting them accompanied also by an affidavit. The prayer of the petition is, that the court below do order an *enquête* upon the facts alleged, and thereupon do render such judgment as to justice shall appertain.

The reasonableness of this application appears so manifest that the appellant conceives it unnecessary at all to enlarge upon the subject. Notwithstanding this, however, the court below, by its judgment refused to order an *enquête*, and made the rule for a re-sale absolute with costs ; and it is for the reversal of that judgment that the present appeal has been instituted.

Quebec, 24th April, 1850.

T. C. AYLWIN,

For Appellant.

