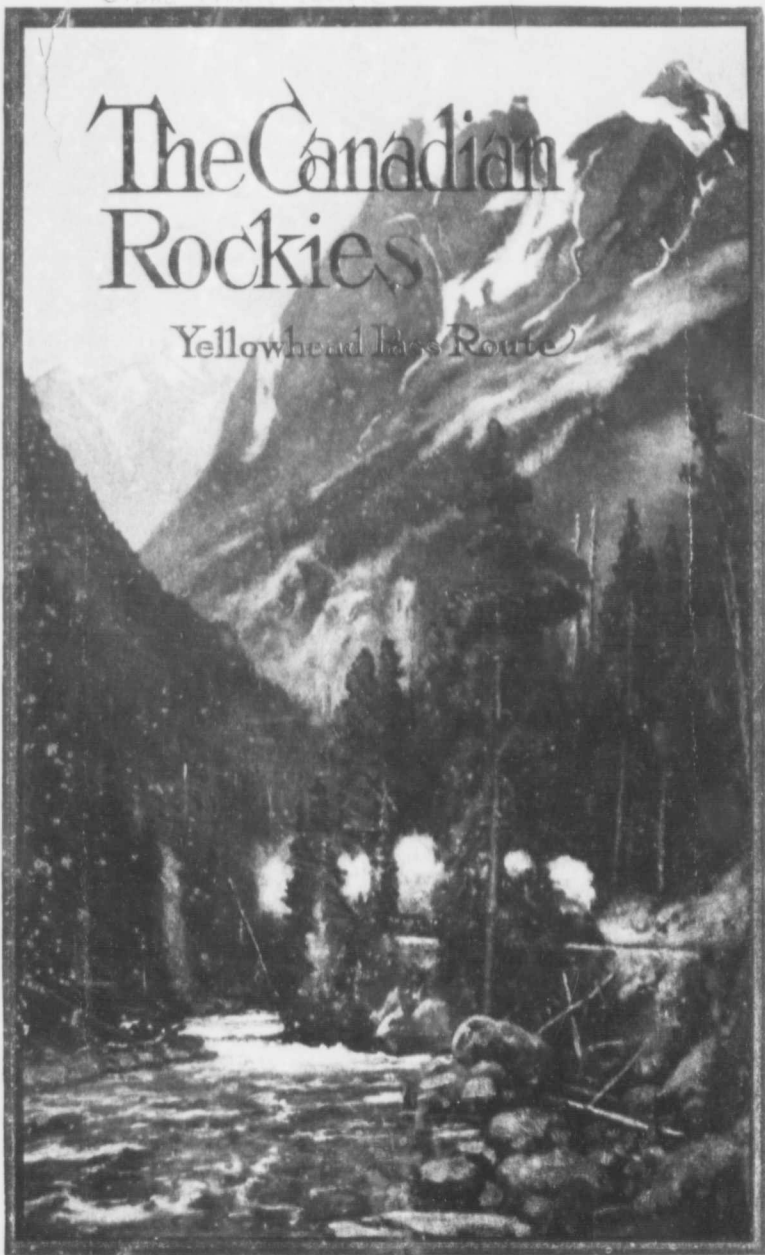
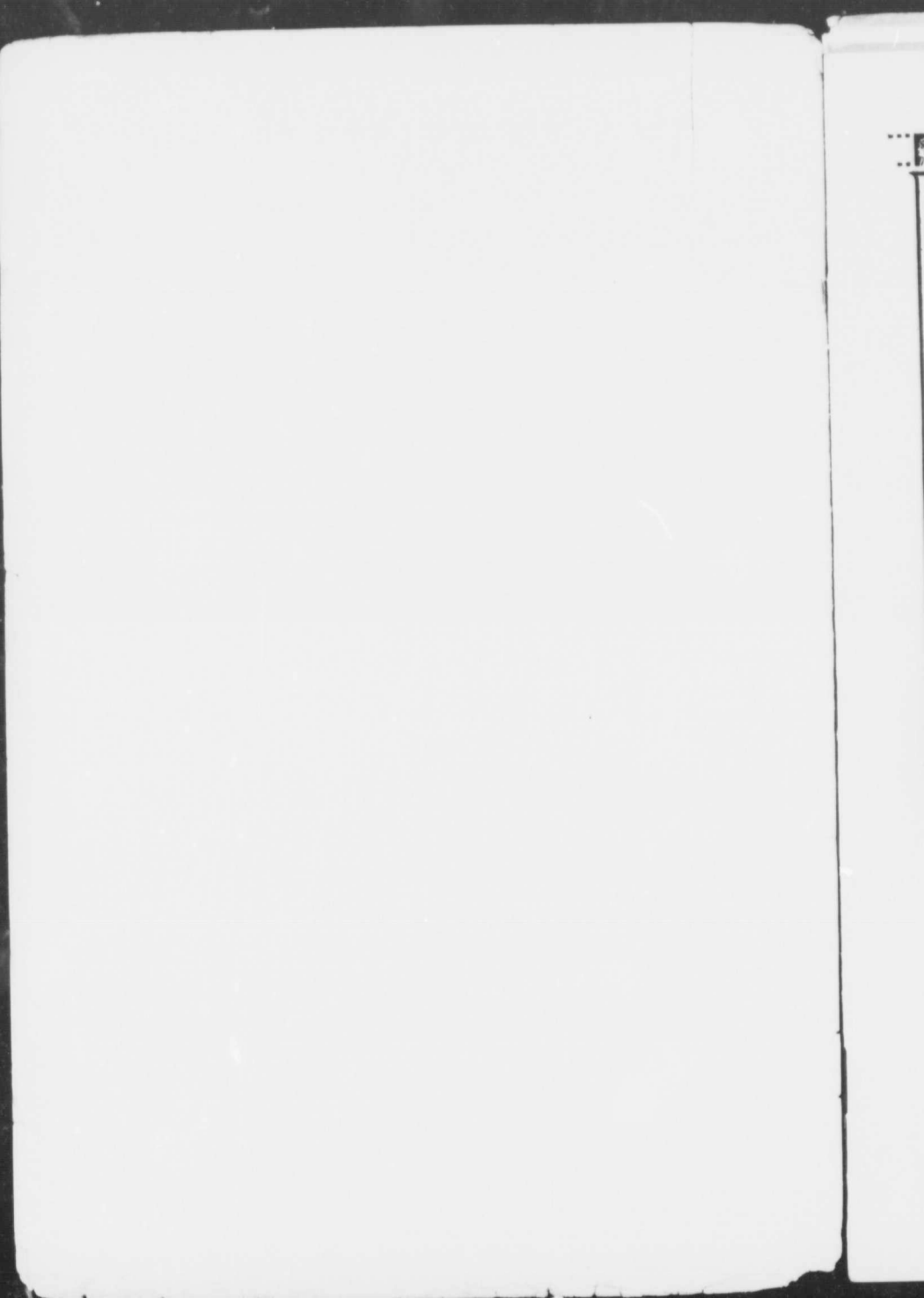


Pamph  
HC  
G

Grand Teton Park  
The Canadian  
Rockies

Yellowhead Pass Route





# The Canadian Rockies

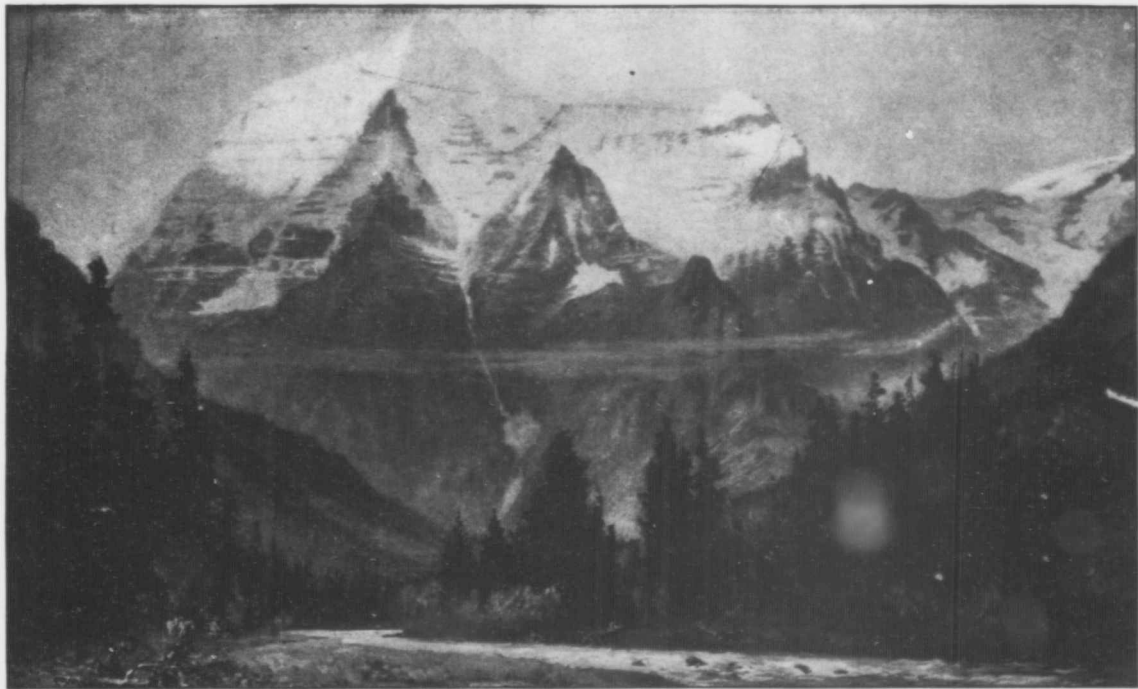
Yellowhead Pass Route



Two Hundred Miles of Majestic Mountain Scenery  
The Mecca for the TOURIST, ALPINE CLIMBER,  
ANGLER, and SPORTSMAN

Issued  
by the General Passenger Department  
**GRAND TRUNK PACIFIC RAILWAY,**  
Winnipeg, Canada.

1911



MOUNT ROBSON (13,700 FEET) THE HIGHEST MOUNTAIN IN THE CANADIAN ROCKIES.



## "The Last Wonderland"

**I**T has been the privilege of the Grand Trunk Railway System to open up, and introduce to tourists and travellers from time to time, fresh new outing places

Broadly speaking, all the "Highlands of Ontario" are the territory of the Grand Trunk, and it was by the efforts of that railway that the charm of the highlands was made known. Later when the Temiskaming & Northern Ontario Railway pushed its rails into the wilderness north of North Bay, and reached Temagami, the builders found the publicity men of the Grand Trunk already on the spot.

Through the co-operation of the railway, two attractive hotels were built on this great lake, and were ready to receive tourists by the time the first train arrived, and so it has been for the past ten or fifteen years, the Grand Trunk has pioneered until Muskoka, Lake of Bays with Temagami, Algonquin National Park, and all that vast and varied Summerland known as the Georgian Bay district, has become the Mecca for thousands of tourists from the South. And now we are coming to the Grand Trunk Pacific. Already the Prairie section of that line is under operation, and during the coming summer express trains will be running from Westfort (Fort William) to the Rocky Mountains, 200 miles west of Edmonton. There will also be stretches of the road in the Eastern provinces over which trains will travel before the end of this year. West of Quebec the line is complete for nearly 200 miles, but the "Last Wonderland," which we are to introduce here, is that portion of Canada, Edmonton to Fort George. This is a land abounding in big things, a vast and hitherto unknown section, in the central and north western part of western Canada, probably the most wild and romantic region on the American continent.

So little was known of this section that the early explorers who were pioneering and path-finding for the Grand Trunk Pacific, found waterfalls higher than Niagara, actually unknown. They also found rivers, mighty rivers, wide and deep that were from 50 to 100 miles out of place on the map.





BRULE LAKE, THE ROCHE MIETTE IN DISTANCE

When they had finished blazing the trail, they found that it wound away by the foot of Mount Robson, which, according to Government authorities, is the highest mountain in the Canadian Rockies. Despite the fact that they were able to lay an almost level line from the Atlantic to the Pacific, they found that they were travelling through some of the grandest scenery to be found anywhere in the world.

Other surprises have followed in the wake of the path-finders. They found, as the prospectors followed the trail-blazers, vast areas of the richest agricultural valleylands, rich deposits of silver and gold, great fields of coal, and forests of fine timber. They found, in short, a country so rich in resources as to insure an abundance of traffic for the splendid Railway that has been designed. They found rugged wilds literally alive with big game, together with rivers and lakes full of fish.

By midsummer of this year tourists from the East via Montreal, and from the South via Niagara Falls, will be able to travel over the Grand Trunk's double track to Sarnia, Ont., take the "Huron" or "Huron" for Port Arthur or Fort William, board an express train there, and ride away to the banks of the Athabaska.

By 1912, over the same trail, tourists will be able to travel to the very heart of the last wilderness, to the cool rivers, and limpid lakes, to the wild forests, and the hot springs of the Jasper National Park.

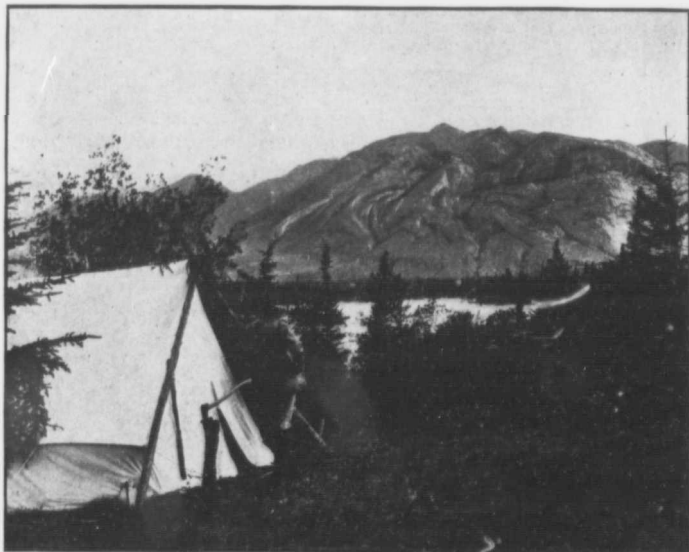


### THE CANADIAN ROCKIES

**D**URING the summer of the year 1910 a party of Grand Trunk Pacific representatives accompanied by two journalists, made the trip from Edmonton to Prince Rupert through the Yellowhead Pass to Tête Jaune Cache thence down the Fraser River to Fort George, B.C., across the Nechaco and Bulkley Valleys to Hazelton at the head of the Skeena River, thence down the river to Prince Rupert. The mountain portion of this interesting journey was a revelation to all, and it was conceded that the route of the new National Transcontinental Railway would be the scenic highway across Canada and will excel in mountain scenery that offered by any of the other transcontinental lines.

Leaving Edmonton the Prairie conditions existing in the country surrounding that prosperous city gradually disappear and before Lake Wabamun is reached the country is, to a considerable extent, covered with a thick growth of poplar and cottonwood while still preserving the fertile soil characteristic of the prairie country. Farming settlements are in evidence for a greater part of the way. Lake Wabamun itself is a beautiful sheet of water, about 14 miles long and from 1 to 4 miles wide. It is an ideal locality for a summer resort, as it is less than 50 miles from Edmonton whose leading citizens have purchased many sites for cottages.

Pembina River, which is crossed by a heavy steel bridge, is 67 miles west of Edmonton. It is a narrow stream, about 250 feet in width, but



BULLRUSH MOUNTAIN, JASPER PARK



BRULE LAKE, JASPER PARK

the gorge over which the bridge is built has a depth of 250 to 300 feet. Beyond the Pembina the country is quite flat.

The first view of the Rockies, on the Grand Trunk Pacific route, is had at the McLeod River, 123 miles west of Edmonton. This view embraces the range to the south of the Yellowhead and is about 80 miles distant. At Prairie Creek, which is practically the entrance to the mountain region, the railway runs high up on a ridge to the south side of the Athabaska River and passengers will be afforded one of the best views of the Athabaska Valley and the mountains. The river at this point is about 300 feet wide, with a swift current of eight miles an hour. Roche Miette, a prominent rocky pinnacle, rears itself to the southwest and looms up in stately grandeur. This mountain is at an elevation of about 8,000 feet and as seen from Prairie Creek seems quite close, although about twenty miles distant. After leaving Prairie Creek the line enters Jasper National Park, the five thousand square miles Reservation set aside by the Dominion Government for the preservation of the forest and the game and fish in that section of country. This is the greatest of the National Parks of Canada.

One hundred and ninety-seven miles west of Edmonton the railway enters what is known on the other transcontinental railways in America as the Foothills, but in connection with this northern route the term is a misnomer compared to the hills that are found on other transcontinental





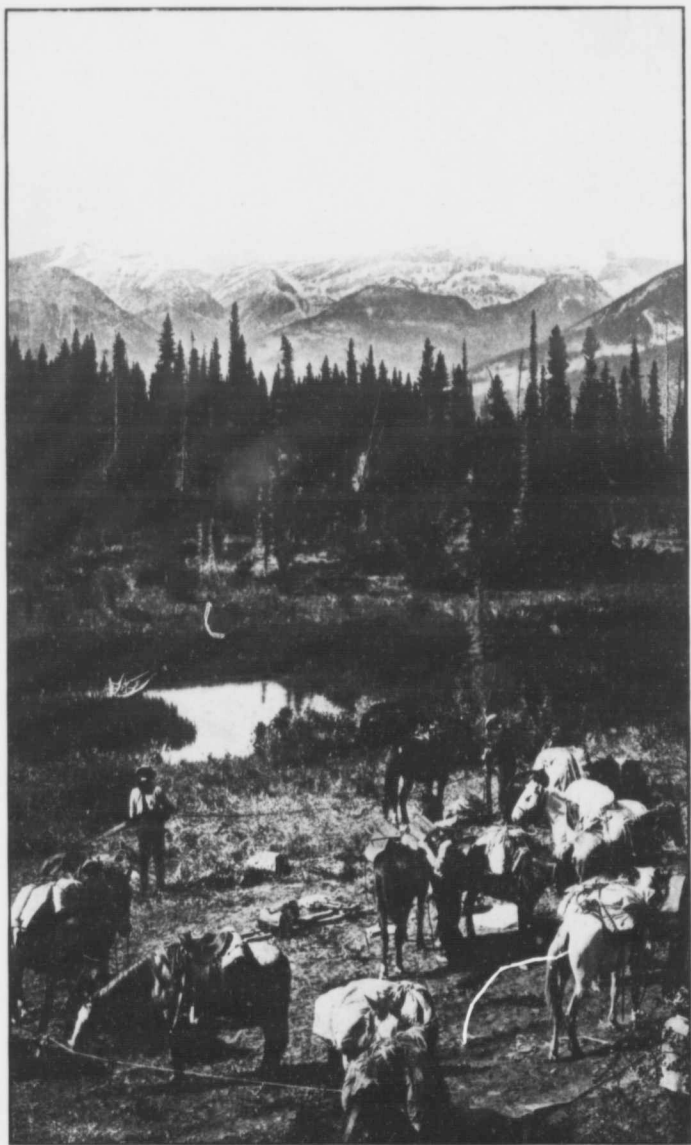
roads. Instead of undulating country with hills of a slight altitude the Grand Trunk Pacific will have mountains immediately on entering the Rockies. The first of these is reached at Brule Lake, 209 miles west of Edmonton, where, to the west, on the opposite side of the Lake, along which the railway runs, is seen a high range of mountains, the principal one of which is "Bullrush," rising from eight to ten thousand feet above the sea level. The Lake itself is an enlargement of the Athabaska River, seven miles long, half a mile wide, and affords a splendid view from the train. Seven miles further on is Fiddle Creek, with Folding Mountain rising above the valley to a height of about nine thousand feet, and on the north side high rugged mountains stand up boldly with vertical cliffs and steep rocky slopes. The Athabaska Valley is from one to two miles wide at this point and most beautiful. It is probable that one of the Grand Trunk Pacific Mountain Hotels will be erected in this vicinity, where the surroundings are most attractive.

The Athabaska Valley at this point is a valley of wonders and surprises and just the likely spot for one of the mountain resorts of the Grand Trunk Pacific. Beautiful carriage roads will no doubt be constructed and the many places that can be reached from this valley will soon make it famous. In every direction that the eye can scan magnificent views appear and one is stunned with the immensity of things. There is a surfeit of good things awaiting the traveller and tourist in this locality.



THE HOT SPRINGS, JASPER PARK

The Canadian Rockies



NEAR JASPER LAKE—THE MAIN RANGE OF THE ROCKIES IN BACKGROUND



## CANADA'S NEW NATIONAL PLAYGROUND

## Alpine Scenery of Unrivaled Magnificence

A WAY beyond the magnificent Jasper portals of the charming Athabaska Valley, through which the Grand Trunk Pacific Railway traverses the Rocky Mountains, lies a vast, wide, wild, unsubdued Alpine wonderland, rich in peerless scenic grandeur, and wild regions hallowed by history, by Indian legend and by the romance of the picturesque voyageurs, the *coureurs du bois* and the path-finders of the fur trade, who builded the foundations of an empire under the setting sun. This is a glorious heritage of the Canadian people which the Grand Trunk Pacific is developing, and which is as precious, if not as plentiful in corn and milk, as the rich plains which stretch away for a thousand miles eastward from those rugged, mighty bulwarks of the western hemisphere. It is a heritage which has not, and never can be, alienated, as it has been vested forever in the name of the nation as the Jasper National Park—an illimitable sanctuary for the work-a-day world, far from the strife and bustle of the market place, and in contact with nature, peaceful, pure and undefiled.

There is every diversity of natural features to delight and gratify the mountaineer or the explorer, or to interest and revivify the tourist. It is an expanse of indescribably sublime grandeur, with an ocean of glorious majestic, virgin peaks comprised within the numerous well defined ranges, snow-capped and glacier scored, which tower above a continental watershed wherein are the headwaters of five mighty rivers, the Saskatchewan, the Athabaska, the Thompson, the Columbia and the Fraser; rugged forest-clad slopes; flowerstrewn passes; impressive solitudes; secluded fastnesses; charmingly beautiful lakes and tarns reposing in their mountain privacy like mirrors set in emerald; vast snow fields; turbulent torrents brawling down from the frozen torpitude of their glacial sources, and beautiful, sublime vistas of majestic Alpland with wondrous, sweeping, spectacular panoramas where sunny valleys cleave the ranges of serrated, vapor-veiled peaks, all resolving into the subtle details of a harmonious whole. There are also rocks and formations of every age and description, and an abounding wealth of flora and fauna, affording exceptional opportunities for scientific and artistic study and research. Above all is the added delight to the mountaineer which lies in the fact that these regions are not "overdone," but are beckoning with the resistless lure that ever leads the adventurous beyond the confines of the vast unknown.

Around and about it everywhere is the inexpressible influence of the mountains, subtle, ethereal and aesthetic, that inspires, elevates and dignifies all who come under its spell. It is the spirit of the hills and the highlands—the spirit of the unconquerable people whose homelands lie within the shadow of their majesty—the spirit that is infused into all who tread their thrilling solitudes, breathe the life laden in the air from their rarified regions, or drink the clear distillation of heaven from their eternal snows. Such a playground is the new National Park.



IN JASPER PARK, NEAR JASPER LAKE

But even though the magnificence of the mountains may enrapture and enthuse, and their immensity may startle and astound, the chief charm to the tourist will no doubt be found in the pristine, primeval character of that new Wonderland which has hitherto been secure from invasion in its isolation and in inaccessibility—traversed only by the Indian hunter and the prospector—although the sublime grandeur of Nature in harmonised features may delight and enthrall.

The serried ranges lack nothing of the poetic romance and the old-world picturesqueness of the Alps. They have an irresistible lure, a unique attraction in their savage, untamed magnificence, and their vast expanses in which the whole of Switzerland might be lost. The extension of railway facilities is now all that is required to force the long neglected but charming, beauteous, Canadian Rockies into their proper position as foremost among the great scenic areas of the world. No longer will the globe trotter exclaim, "See Rome and die;" but rather it will be, "See the Rockies and live."

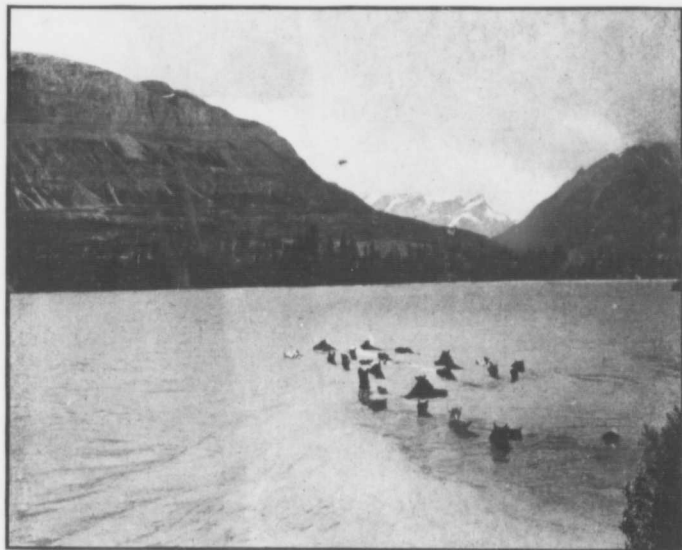
The development of this magnificent Alpland is not the least of the many advantages which must accrue to Canada through the construction of the Grand Trunk Pacific. It is, therefore, fitting that this great national playground should be on the great National Transcontinental Highway and its development will be watched with intense interest by the people throughout the world,

## THE ATHABASKA VALLEY

THE Athabaska Valley, through which the Grand Trunk Pacific approaches the mountains, is a most remarkable, natural avenue of commerce, and in many ways closely resembles the rolling prairie but for the snow-turbaned giants with which it is girt. It is so wide, so level and so gentle in its approach to the continental divide that it is almost amazing that such a pathway should have been provided by Nature when the colossal peaks were upheaved in serried ranges on every hand. For a hundred miles before the traveler enters its portals the phantom forms of nameless peaks haunt the horizon as the railway winds its way through the foothills and the beautiful valley of the Athabaska River (Mistahay Shakow Seepee), the Great River of the Woods, as it is known by the Crees. Gradually those phantoms take definite form out of their shimmering, prismatic, gauzy haze until the first escarpment of the Rockies is thrown up, well defined, mighty and defiant—transcendently beautiful with its battlemented heights, castellated towers, ramparts and beetling precipices filling the range of vision. There are, however, two peculiarly prominent elevations. These are Roche a Perdrix and Roche a Miette, the grim, cyclopean sentinels who eternally guard the portals of the pass. Those two grand old warders—landmarks to beckon the traveler on to the beautiful valley and the wonders of nature beyond—are two of the half dozen mighty peaks which the old trappers thought



JASPER LAKE, JASPER PARK



HORSES SWIMMING THE ATHABASKA AT SWIFT'S

worthy of a name. Roche Perdrix, or Folding Mountain, is a most peculiar one. As Lord Milton said in describing it after his eventful journey to the Pacific a half a century ago, it resembles "an immense sponge cake which had been cut in half." In it a long range of pinnacles, pyramids and peaks terminate abruptly in a clean-cut, sheer precipice over them all of three thousand feet high, so perpendicular that it might have been cloven at a single stroke from its fellow on the other side of the valley when the mountains were rent asunder and up-piled in glorious confusion. The scenery surrounding is of exceptional beauty.

The pass here is about five miles wide, with the beautiful Athabaska winding like a silver thread through the centre, and with well defined and distinct ranges of mountains running away in vistas in every direction—north, south, and west—in endless variety of configuration. The pass itself presents an ever-changing aspect of loveliness, with tiny stretches of flower-strewn prairie and patches of pretty parkland and intersected by brawling torrents, clear as crystal, while over and above it all is the ponderous glory of the mountains and Alpine phenomena. Five imposing peaks, Roche Perdrix, Roche Miette, Roche Ronde, Roche Jacques and Bullrush, with Roche Suetie in the background, are ranged in almost a semicircle, enclosing a stretch of valley which may be best described as an amphitheatre, in the centre of which reposes Brule Lake, a shallow expansion of the Athabaska River, mirroring on its bosom the untamed

## Yellowhead Pass Route

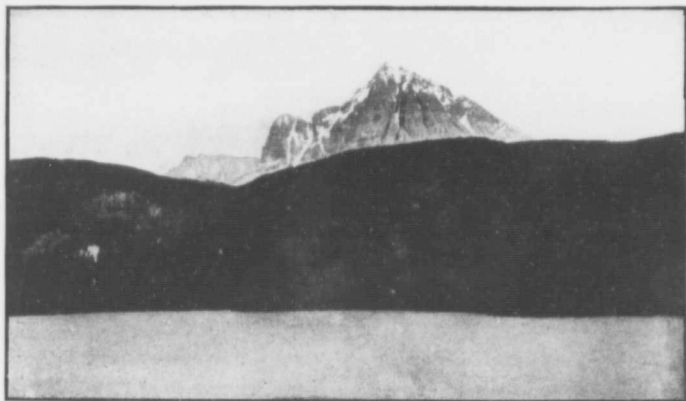
picturesqueness of the landscape. It lends a finished, glorious touch of the Great Artist of Nature who thus perfected the beauties of a picture so exquisite in its delicacy, so harmonious in the diversity of features of confusion, fracture and imposing grandeur that it might be but a dream of fairyland. The awful convulsion of nature which has left its eternal impression here in the wild fracture arouses a feeling of reverential awe which makes frail, finite humanity shudder to contemplate. But it is also one of the grandest and most enrapturing scenes upon which the eye of man may rest, and one of which even the rich expression of our language may not convey an adequate conception.

It is inspiring and captivating to view this scene as the evening approaches and all nature is at rest ; when the flaming, fervid hues glint and gleam on the waters with the hoary summits like the sheen of a million spears, and the polychromatic, iridescent tints of the sinking sun burnish the snowy helmets of these six colossal peaks, until the sombre shades and violet haze of evening creep up the corries over the last glittering pinnacle, to be in turn dispersed by the soft, silvery, shimmering opalescence of lunar splendor which envelops the landscape like a benediction.

The late Principal Grant of Queen's University, Kingston, Ont., camped there while on an engineering expedition forty years ago with Sir Sanford Fleming, and while under its spell his graphic pen painted a



THE FIDDLE BACK RANGE, JASPER PARK



MOUNT PELEE AND YELLOWHEAD LAKE

word-picture of it that ranks among some of his finest efforts. It reads in part as follows :

" The summits on one side of the Athabaska were serrated, looking sharp as the teeth of a saw ; on the other, Roche a'Miette, immediately behind the first line, reared a great, solid, unbroken cube, two thousand feet high, 'a forehead bare,' twenty times higher than Ben An's ; and, before and beyond it, away to the south and west, extended ranges with bold summits and sides scooped out, and corries far down, where formerly the wood buffalo and the elk roamed, and where the moose, big horn and bear now find shelter. There was nothing fantastic in their forms. Everything was imposing. The mighty column of Roche a' Perdrix towered a mile above our heads, scunds of clouds kissing its snowy summit, and each plication and angle of the different strata up its sides boldly and clearly revealed. Miette is the characteristic mountain of the Jasper Valley. There are others as high, but its grand, bare forehead is recognized everywhere. It is 5,800 feet above the valley, or over 8,000 feet above the sea.

" The most wonderful object was Roche a' Miette. That imposing sphinx-like head with the swelling Elizabethan ruff of sandstone and shales all around the neck, save on one side where a corrugated mass of party strata twisted like a coil of serpents from far down nearly half way up the head, haunted us for days. Mighty must have been the force which upreared and shaped such a monument. Vertical strata were piled on horizontal, and horizontal again on vertical, as if nature had determined to build a tower which would reach to the skies.

" There is a wonderful combination of beauty about these mountains. Great masses of boldly defined bare rock are united to all the beauty that variety of form, color and vegetation can give. A noble river with many



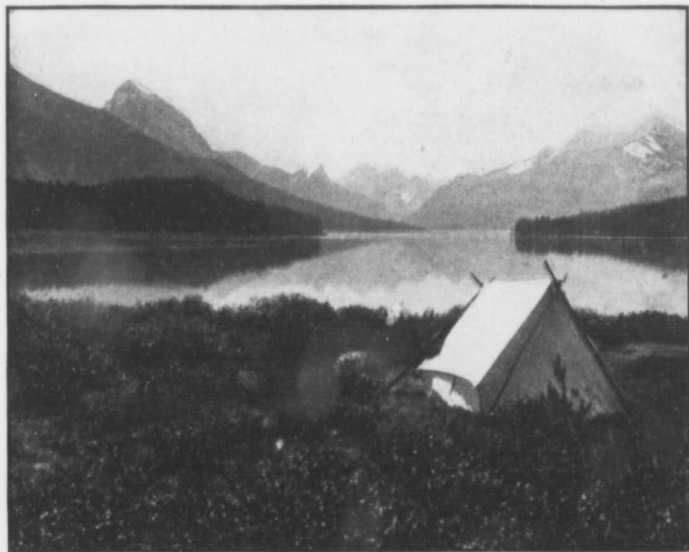


tributaries, each defining a distinct range, and a beautiful lake (Jasper) ten miles long embosomed three thousand feet above the sea, among mountains twice as high, offer innumerable scenes seldom to be found within the same compass for the artist to depict and for the traveler to delight in."

All that Principal Grant said has been heartily endorsed by Mr. Hastings, of Bradford, England, an enthusiastic and famous Alpinist who has mountaineered in many parts of the world. During the summer of 1909 he, with a party of associates and kindred spirits from England, visited the Jasper Park and Yellowhead country. Mr. Hastings, in speaking of this section, did so in the following terms:

"There is really little ground for comparison between the Rockies here and the Selkirks. Everything is on a larger and grander scale. The mountains are higher, more majestic and imposing than the Selkirks. In fact, everything is on a more magnificent scale, for nature has been lavish in an extravagant distribution of grandeur. I shall never forget my journey through that beautiful pass." Mrs. M. T. S. Schaffer in writing of this locality says:—

"Berries, berries everywhere hailed our progress. Carpets of luscious blueberries covered the otherwise arid ground for miles; on the upper slopes the Saskatoon bushes held out to us their refreshing racemes of fruit—no starving in that country. In imagination I saw a picture which in the near future was bound to come true, those low sunny river bottoms will be fruit farms."



MALIGNE LAKE



■ MAKING TOAST FOR BREAKFAST,

## THE HOT SPRINGS

IN the Valley of the Athabaska a short distance south of Brule Lake, Fiddle Creek empties into the Athabaska River and from this point it is probable that the Hot Springs will be reached. From here to the Springs is a distance of about 10 miles up the Valley of the creek. Above the flat where is found the mouth of Fiddle Creek the valley is about 400 feet wide for about half a mile, then narrows to about 40 feet with sheer rock walls rising 400 feet to 600 feet high, making a picturesque and majestic gorge. The Springs themselves are not on Fiddle Creek proper, but on a small branch which flows in from the west, known as Sulphur Creek. They are in several small basins, the incrustations being yellow, showing the strong sulphur nature. The temperature of the water of these Springs ranges from 111° to 127° and their quality is very buoyant. From a medicinal point of view, the efficacy of the water is apparent from the following :

### ANALYSIS OF JASPER PARK HOT SPRINGS

The following analysis which was made at the Experimental Farm, Ottawa, December 22nd, 1909, will be found of interest inasmuch as it contains many ingredients which go to make up a first class medicinal water.

	Parts per million	Grains per gallon
Silica ( $SiO_2$ ) .....	45	3.15
Sulphuric anhydride ( $SO_3$ ) .....	902	63.14
Carbon dioxide ( $CO_2$ ) .....	85	5.95
Phosphoric acid ( $P_2O_5$ ) .....	Traces	Traces
Chlorine ( $Cl$ ) .....	7	.49
Oxide or iron ( $Fe_2O_3$ ) alumina ( $Al_2O_3$ ) .....	None	None
Lime ( $CaO$ ) .....	558	39.06
Magnesia ( $MgO$ ) .....	108	7.56
Potash ( $K_2O$ ) .....	21	1.47
Soda ( $Na_2O$ ) .....	17	1.19
	1,743	122.01

Temperature 127 degrees Fahrenheit.

A chalet or other suitable structure will be erected at this point for the accommodation of guests who desire to remain any length of time.

The carriage road which it is the intention of building up Fiddle Creek Valley will wind and twist in serpentine fashion through a rugged grandeur of scenery. In places the driveway will follow the top of the ridge by the edge of the canon from which dizzy heights tourists will have a



MOOSE RIVER AND LAKE, B. C.

splendid view of the precipices and surroundings. The Springs are at an elevation of about 1,200 feet above the railway, but easily accessible.

Continuing west, the railway follows the Athabaska, with ranges of mountains rising to dizzy heights on both sides of the grade. The principal mountains at this point are Roche Miette on the east side and Roche Suette on the left side. The derivation of Roche Miette is partly from the French and Cree Indian languages, Roche being French for "rock," and the word "Miette," the Cree for "sheep." So-called on account of the splendid rocky mountain sheep hunting the Indians had in this locality.

Looking towards the west from this point about ten miles distant is seen the Fiddle Back range, an imposing pile of a series of peaks which tower towards the sky and are covered with snow, these peaks rising to an altitude of from six to ten thousand feet. The view at sunrise and sunset at this point is very beautiful.

Mountain sheep and bear are found in goodly numbers in this vicinity and partridges abound in the forest. Hunting, however, is not allowed in Jasper Park, and the regulations are strictly enforced by the Government guardians. The building of the Grand Trunk Pacific Railway will bring these magnificent mountain fastnesses closer to the outside world, and the mountain climber, the lover of God's out-of-doors, and the angler will be able to reach this "Mecca" with ease and comfort.



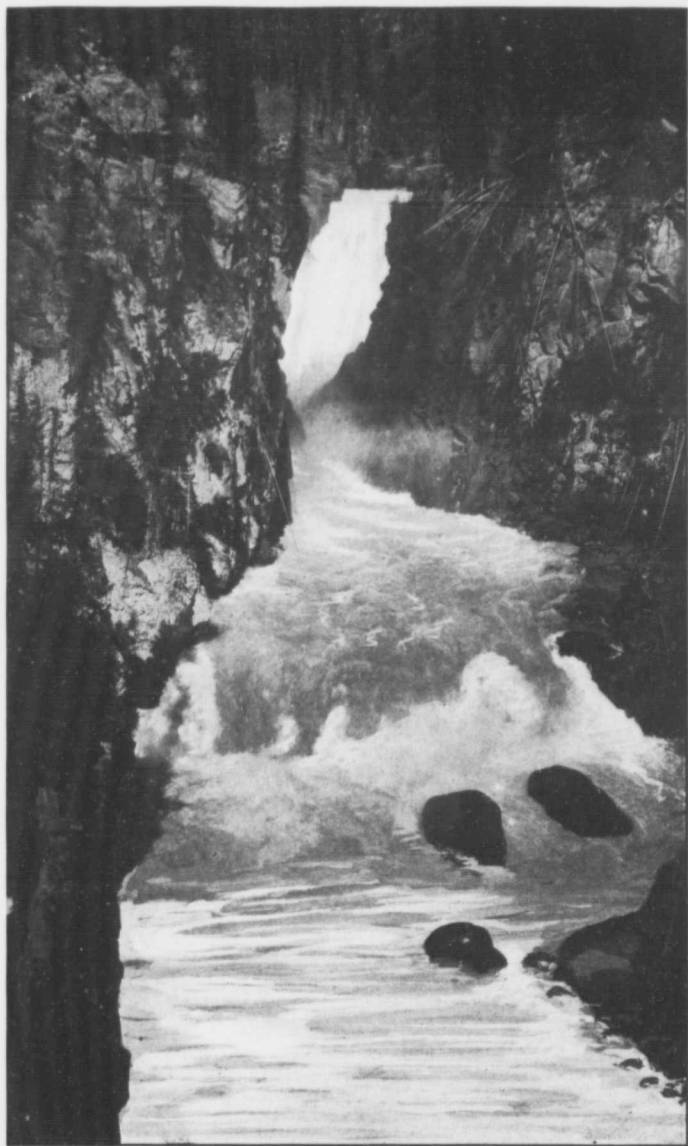
## SOME MOUNTAIN TRAILS

At this point there are a number of interesting trails that will allow those who desire the chance of exploring some of the mountain recesses. One of these is the Roche Miette trail that takes one well up on to the mountain, from which point of vantage magnificent views of the Athabaska Valley are had. A grand view is had from here of the Fiddle Back range, looking west, also Pyramid Mountain (9,700 feet) in the same direction, and to the east a long, serrated peak range. Looking west from this point are also seen Jasper Lake and Fish Lake and Rocky River winding like a silver thread through the country for miles. Jasper Lake, nestling in the valley surrounded by high mountains, is five miles long and one mile wide.

The Grand Trunk Pacific line is laid between Jasper Lake and Fish Lake and magnificent views of mountain scenery are to be had on every hand. Looking across Jasper Lake lies the site of Jasper House, an historical landmark of the early days, but now all semblance of the old times have disappeared. It was built about the year 1800 and noted by Franchere in 1814. This house was an important post of the Hudson's Bay Company and in 1817 was in charge of an old clerk named Jasper Hawes, and it was from his Christian name that the house was called "Jasper." In the earlier years of its establishment it was known as the "Rocky Mountain House" and was a famous landmark of old days.



LAKE HELENA.—SHOULDER OF MOUNT ROBSON ON RIGHT



MOOSE RIVER FALLS, B. C.



he  
Jau  
loc  
par  
Hu  
Bri  
pra  
by  
ma  
file

ba  
At  
de  
ear  
wi  
re  
th  
..  
ca  
th  
w

ri  
at  
th  
ca  
g  
th  
fa  
d  
o  
l  
le

r  
c  
r  
le

c  
M  
s  
a



Jasper Hawes was celebrated for the great shock of yellow hair that he wore and the Indian and Half Breed hunters referred to him as "Tete Jaune."—thus Yellowhead Pass, at the portal of which Jasper House is located, and beyond the Yellowhead, "Tete Jaune Cache," where the parting of the ways came for many a party of *coureurs du bois* of the Hudson's Bay Company, covering the rich fur country of the interior of British Columbia. Even as the buffalo trails which deeply indented the prairie in every direction a few years since are being rapidly obliterated by the march of settlement and the building of railways, so will the land marks of early Canadian frontier history be only a cold record in the files of the fur trading companies, as they are fast disappearing.

A few miles further on the railway crosses the Athabaska to its west bank and proceeds in a southerly direction. The scenery of this whole Athabaska Valley is grand in the extreme and is improving as we get deeper into the mountain fastnesses. To the left of the railway on the eastern side of the river is seen the "Colin Range," high rocky mountains with prominent snow-capped peaks. Crossing the Snaring River, a wild tumultuous mountain stream emptying into the Athabaska, we reach the well known place called "Swifts." Before however dealing with this part of the country we will branch off and take a side trip up the "Snaring." About 6 miles from the mouth of this river is an interesting canon, the walls of which are about 200 feet high and the gorge not more than 20 feet wide. Through this narrow chasm the waters rush through with a tumble of thirty feet, making a most vivid and picturesque fall.

At "Swifts" the scenery is gorgeous, mountains of high altitudes rising in all directions. The valley at this point is park-like, but the main attraction is the scenic grandeur of the mountains and the opportunities that are offered for mountain climbing and exploring. The place is called "Swifts" on account of a squatter who has occupied a plot of ground here for the past 18 years. He is an interesting inhabitant and the stories of his trials and hardships when living in these mountain fastnesses miles from any other habitation, is entertaining. Swift has demonstrated that even in the heart of the Rockies the country is capable of producing wheat, potatoes and all kinds of vegetables. In 1910 he had 10 acres under crop. Pyramid Mountain (9,700 feet) is reached from this locality.

About 2 miles west of "Swifts" the Maligne River, which takes its rise in Maligne Lake, empties into the Athabaska. This territory, though on the east side of the river and the opposite side on which the railway runs, is destined to be a magnificent resort for the Alpine climber, the lover of nature and the angler.

The Maligne range skirts the eastern bank of the Athabaska just opposite Henry House, sheltering within its fastnesses the charming Medicine or Maligne Lakes regarded by those who have seen them and studied them as the most beautiful place in the Rocky Mountains, if not actually in the entire world. The Medicine Lakes are typically Alpine



IN GRAND FORKS VALLEY, B. C.

waters, embosomed amidst mountain grandeur, eternal snows, glaciers and verdant forests. They ripple in the sunshine or pulsate in the winds beneath the giant peaks which rise abruptly from where the wavelets lap on their bases. Every passing whim of capricious nature, revealing as it does some new aspect of loveliness, is caught and faithfully portrayed there, with every faint, spectrum tint and delicate hue, or colour scheme rich and rare, until the placid bosom of the waters becomes but as a curtain upon which is thrown a kaleidoscopic picture of incomparable beauty weaving an ineffaceable memory which will be cherished forever by those who see it.

Four miles southwest of Swift's beautiful ranch and on the railway line is the site of Henry House, near the southern extremity of the Caledonia Valley, and directly opposite the point where the Maligne River flows into the Athabaska. Henry House, besides being a point of great historical interest, occupies a peculiarly strategic position for the Alpinist. The old trading post was established there about one hundred years ago by William Henry, one of the indomitable spirits of the fur trade employed with the Northwest Fur Company, the bitter rival of the Hudson's Bay Company. Henry selected this point to erect a post in opposition to Jasper House, because of the commanding position it gave him in that section of the mountains. It was the centre of a vast area south and easterly and also had comparatively easy means of access alike



## Yellowhead Pass Route

to the headwaters of the Columbia and the Fraser. What it was to the fur trader it is also to the mountaineer, for it is conveniently possible from there to reach the chief points of interest and the grandest scenery in all that vast section.

The turbulent, tempestuous Athabaska has its source in the eastern end of The Committee's Punch Bowl. It sweeps out through its rocky gorges and across the Buffalo Prairie to a junction with the Miette River a few miles southwest of Henry House, just where the latter surges down from the height of land in the Yellowhead Pass, and in the confluence of those two mountain torrents the great Athabaska is formed.

Away on the southern horizon defiant Mount Geikie towers aloft, sharp and inaccessible, until its summit is lost in the azure of heaven at an altitude of 11,000 feet. This is in the main range of the Rockies overlooking the great divide, and just to the southeast of Geikie lies Simpson's Pass, in which under the name of the Whirlpool River the mighty Athabaska is born in a region of perpetual snow and a succession of glaciers. The pass bears the histrionic name of Simpson because it was through it that the famous Hudson's Bay Company's governor, Sir George Simpson, made his memorable trip of exploration to the headwaters of the Columbia and beyond. Within that pass lies "The Committee's Punch Bowl," a freak of nature which is probably without a parallel in the universe. Describing it Sir George Simpson says: "The relative position of the opposite waters is such as to have hardly a correlative on



AT TETE JAUNE CACHE, B. C.



EAST SIDE OF MOUNT ROBSON, SHOWING ONE OF THE GREAT GLACIERS



the  
Co  
sur  
fro  
nar

the  
wi  
wr  
an  
no

ta  
wa  
en

Ro  
or  
ot  
P  
be  
at  
Y  
fe

M  
b

F  
a  
v  
s  
p  
h  
fl  
v  
F  
c  
v  
a  
f  
I  
c  
l  
i



the earth's surface, for a small lake sends its tribute from one end to the Columbia and from the other end to the Mackenzie." The lakelet is surrounded by a coterie of giant peaks which can be plainly discerned from Henry House, and from these it derives its peculiarly appropriate name of The Committee's Punch Bowl.

A few miles west of the junction of the Miette and the Athabaska there is a beautiful little lake about a half a mile long and a half mile wide, which simply teems with Rainbow trout. Two members of the writer's party, fishing from the shore, caught fifteen within five minutes, and the bosom of the lake seemed to be boiling with them. The fish are not large but gamey and delicious eating.

The Miette though not wide is a torrential stream, and many mountain streams tumbling down from dizzy heights empty into its rushing waters. The Rainbow trout fishing in the creeks and streams which empty into the Miette afford capital sport.

Continuing on our westward journey we reach the summit of the Rockies, from which point it is noticed that two streams take their rise, one flowing eastward joining the Athabaska and on to Hudson's Bay, the other flowing westward into the mighty Fraser and thence on to the Pacific Ocean. We also cross at this point the inter-provincial boundary between the provinces of Alberta and British Columbia. The first attractive feature which greets the eye on entering British Columbia is Yellowhead Lake, a lovely sheet of water nestling in the valley, about four miles long, with an average width of one and a half miles.

The lake is surrounded by lofty mountains, the principal peak being Mount Pelee (9,000 feet) on the south shore. The lake affords good boating and the fishing is good, the principal species being lake trout.

From Yellowhead Lake a small stream carries its waters into the Fraser River, the latter taking its rise in glaciers from the mountains about twenty miles to the south. Entering the Fraser River Valley the view is very fine from the location of the line. Looking to the south several high mountains are noticeable and in every few miles is seen picturesque streams tearing down the mountain sides with waterfalls hundreds of feet high and the water rushing through the gullies in its mad flight to the Fraser. A few miles further on we come to Moose River, a very swift and dangerous stream during June and July when the water is high. About one hundred yards from the grade at this point is Moose River Falls, a beautiful cataract where the river rushes through a canon one hundred and fifty feet high and falls over the brink of the river bed in volumes, taking three drops before reaching the valley. The first fall is about thirty feet, the second about ten feet, and the third fifteen feet. This fall is very attractive and the surroundings picturesque. Moose River empties into the Fraser at this point. From the high hills north of the railway magnificent views are had in all directions, particularly looking west where an unobstructed view of the Fraser Valley is had, also of Moose Lake about three miles distant.



ON THE FRASER RIVER NEAR TETE JAUNE CACHE

About two miles west of Moose River is a trail to Mount Robson, which has been used by the Mountain climbers in recent years. This trail is a long and difficult one (about 20 to 25 miles) but which leads to one of the less difficult routes for the ascent of the mountain.

From Moose River the railway runs at the base of the mountains on the north side of Moose Lake. Moose Lake is a beautiful sheet of water seven and one half miles long and from a half to one mile wide. On the north side of the lake the line runs through a burnt-over forest, but the outlook from the train looking south is an imposing one. The mountains to the south of the lake (The Selwyn Range) rise abruptly from the water's edge, being heavily clothed with live trees to the timber line, and above are majestic snow-capped peaks. On the north of the lake a stony slope of moderate inclination runs back for a considerable distance until the western end of the lake is reached, when the steeper rocky slopes of the Rainbow Mountains begin. Viewed from the grade the Rainbow Mountains have a gorgeous appearance of red and yellow from which they have derived their name. Moose Lake is deep and with very little current, good for boating and fishing.

From Moose Lake we proceed to Grand Forks Valley, about eight miles distant. From this point is seen the grandest view on the whole route. Great mountains surround the valley on every hand, but over all stands Mount Robson (13,700 feet) which looms up in the north like an



immense cathedral and rightly called in the description of the mountain by Milton and Cheadle in the "North West Passage by Land," as 'a giant among giants and immeasurably supreme.' When we first caught a glimpse of this magnificent pile it was partially enveloped in clouds and its peaks were continually surrounded with those fleecy clouds for three days before we had a clear view of the summit. This mountain with its surroundings is without question the finest mountain scene on the American Continent and equal to any in the world.

There is nothing on any of the Transcontinental Lines either in Canada or the United States that can compare with it. Photographs that have been taken of the valley and mountains in the past do not give any conception of its beauty, magnitude and grandeur. The Valley of the Grand Forks is a beautiful flat about ten miles long and from one half to one mile wide, the Fraser River running through on the south side and the Grand Forks running on the north side until they join at the western end of the valley.

The Valley is completely surrounded by high mountains with snow-capped, castellated peaks, and in every direction the outlook is superb.

Fishing in the Fraser at this point is good, Rainbow trout predominating. They are gamey and unexcelled for a food fish.

#### MOUNTAINEERING IN THE CANADIAN ROCKIES

**I**N describing Mount Robson the "Monarch of the Canadian Rockies," we cannot do better than to reproduce a portion of an article from the London "Times" November 16th, 1909, written by one who has visited the locality.

"Every year mountaineering is becoming more centrifugal. There was a time when to the most ambitious climber the Alps were the beginning and end of all things. The field for exploration and conquest seemed almost boundless. Two generations of climbers have reduced the Alps to subjection. Their beauty remains untouched; barrack hotels, funicular railways, and other disfigurements of the valleys and lower slopes cannot touch the glory of the great heights. Their pre-eminence as the ideal mountains for the climber—ideal in size and infinite in variety—cannot be disputed. But the novelty is no more. There are no new passes to discover, no virgin peaks to conquer. Yet discovery and conquest are of the very essence of mountaineering. The climber still begins in the Alps, but sooner or later, if he can find the time or the money, he roams afield. Norway and the Caucasus have their votaries. Some strenuous souls delight in toiling painfully up Himalayan or Andean snow slopes, contributing much material to the vexed question of mountain sickness. But the true pleasures of mountaineering are not to be found on these immense heights. For the climber, and more especially for the British climber, there remains a great Alpine field to open out and conquer, the Canadian Rockies.



## The Canadian Rockies



"Mount Robson lies only a few miles north of the valley of the Fraser to the west of the Yellowhead Pass, through which the Grand Trunk Pacific will pass. It will be visible from the railway as it crosses the Grand Fork, a tributary of the Fraser, which runs right round the western base of the great mountain. The view of the mountain from that side is one of the most impressive in the whole range of Alpine scenery. The valley is only some 2,700 feet above sea level, and the mountain rises straight and in a sheer face of 11,000 feet, a face of black rock ribbed with transverse bands of snow and lit up by a great hanging glacier on the eastern shoulder of the summit."

"To describe in detail the mountain scenery of this region, which will soon be opened out by the railway, would take up too much space. In it the characteristic features of the Rockies are in some respects exaggerated. The mountains are as high and in many cases higher than those on other routes, while the valleys are lower and wider, the general effect being one of greater spaciousness. The glaciers in this northern region are truly magnificent, and many of the individual peaks are remarkably bold in outline. There can be no doubt that the Upper Athabaska, the Upper Fraser Valley, where it opens out into Yellowhead Lake or Moose Lake, and the valleys of the Moose River and Grand Fork will become resorts of the climber and the lover of glorious scenery.

"Most beautiful of all, though less accessible, is the valley to the north



ON THE FRASER RIVER BETWEEN TETE JAUNE CACHE AND FORT GEORGE



of Mount Robson, where we camped on a little island of the glacier stream which here divides, sending half its volume into the Grand Fork, and so by the Fraser to the Pacific, and half to the Smoky River and thence to the Great Mackenzie and the Arctic Ocean.

"On this side Mount Robson is all white, a mighty face of ice and snow whence huge glaciers make their way into the valley. Of these the most magnificent falls sheer into a lake at the mountain's foot, and all day long great icebergs can be seen crashing off the glacier into the blue water below. From the western end of the lake the Grand Fork emerges and curves round the northern and western base of the mountain in a series of beautiful waterfalls."

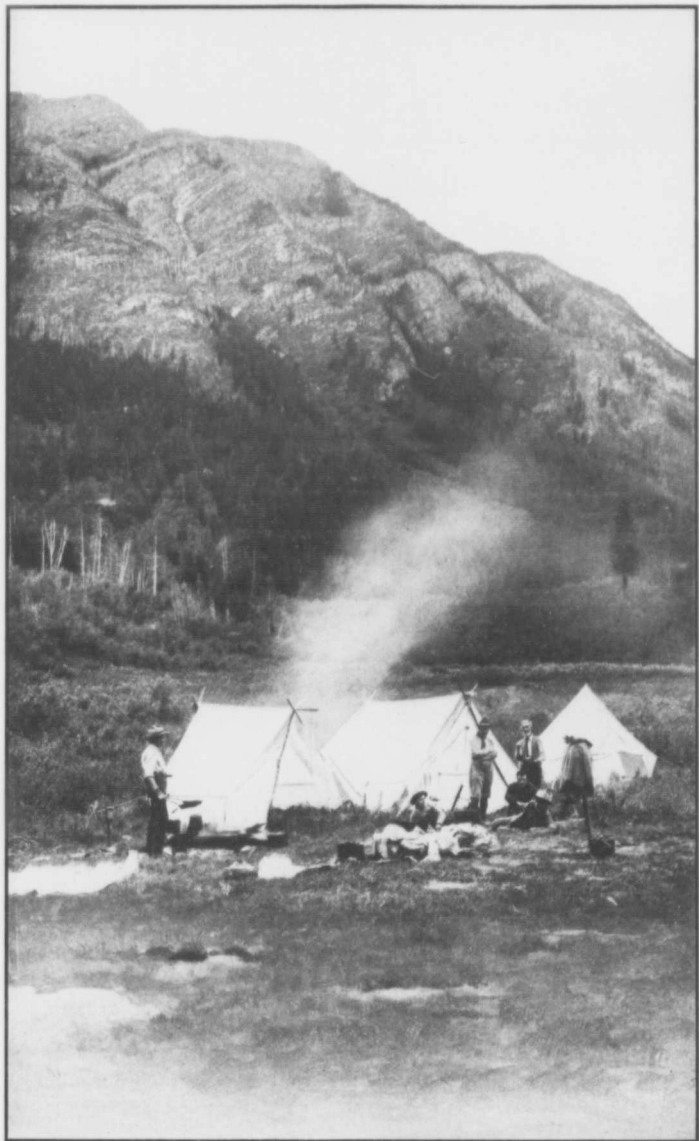
The Rev. G. R. B. Kinney, of the Alpine Club of Canada, writes in an article recently published, as follows :

"This grand, isolated peak, cloaked with untold ages of snow, towers aloft thousands of feet above all the neighboring mountains. Here is destined to be the "Mecca" of the Canadian Alpine world. Banff, Paradise Valley, Lake Louise, Yoho and Glacier, are spots long dear to the tourist's heart, but concentrated within the sweep of the base-line of Mount Robson are more beauty spots and wondrous scenery than in all the others combined. For, aside from the mountain itself, with its high-flung snow-crowned peak, its perpendicular walls of rock and its overhanging glaciers, the valleys which surround it are so full of interest that the region is destined to win world-wide repute."

So fearful is the height of Mount Robson above this valley, and so sheer is its whole face, that the avalanches slide from its very highest peak to within a few yards of the lake, where they lie the year around, at an altitude of not more than two thousand five hundred feet.

Following the trail of the beaver, and goat, and caribou, above the lake, and climbing the huge terminal moraine of an ancient glacier, through which the river had ploughed its mad way, I came to that most enchanting spot that I named by right of discovery, the "Valley of a Thousand Falls." A great wall of perpendicular cliffs, thousands of feet high, hem the valley in on every side. Here and there on sheltered ledges patches of spruces relieve, with their dark greens, the greys of the rocks, while everywhere the numerous streams from the great glaciers all around, plunge over the high precipices in countless falls of spray. A mighty tongue of ice lolls over a cliff at the head of the valley and curves so low as to reach the valley floor, while here and there in the bottom of the valley are huge springs from which flow full-fledged streams. A high-up glacier on the west has such a large field of snow at its source and flows down so steep an incline that huge chunks of ice are constantly breaking off its precipitous front and crashing into the valley below.

At the bottom of the valley and to the north, rises Mount Turner, a splendid peak of some twelve thousand feet altitude, while to the right, at an altitude of between two and three thousand feet above the valley,



ALPINE CLIMBERS CAMPING IN THE GRAND FORKS VALLEY, B.C.

the  
form  
bear  
floor  
amo  
is a

the  
mil  
glac  
Mc

dic  
gul  
onc  
see  
spr  
gu

us  
for  
bo  
bo  
flu  
H  
so  
flc  
st  
of  
th

th  
d  
al  
th  
is  
a  
ir

T  
t  
r  
r  
J  
é  
i





the Grand Forks, swift flowing from Berg Lake, leaps from the cliff and forms a superb falls as high as a Niagara, then plunges in a number of beautiful cataracts down a very narrow gorge, till it sweeps across the floor of the valley. And from the Goat trail, that winds in and out among those overhanging cliffs, truly the "Valley of a Thousand Falls," is a marvel of Alpine scenery.

The other branch of the Grand Forks, which comes in from around the south of Mount Robson, is a wilder child of nature. The several miles of its course records one long fierce scramble of roaring cataracts glad of release from the peaceful Alps above, seeking to reach the foot of Mount Robson with all possible speed.

Everywhere this "King of the Mountains" presents great perpendicular walls of rock piled high with massive masonries of ice. Each gully down its rugged sides adds its quota of plunging torrents, while in one vast ice-crowned arena, high as heaven, a mighty jet of water, shot seemingly from a hole in the wall, curves a high thrown arc and falls in spray far down the mountain side, as if thrown from some huge hydraulic gun. We called it the "Spouter."

From our camp spot under the cliffs, five miles of valley lay before us to the east. Midway its length, the foot of the great glacier forms the low divide. Lake Adolphus, gleaming in the distance, bore waters for the Pacific: Berg Lake, beneath our feet, held in its bosom, a sparkling flood that would ere long reach the Pacific, while high-flung peaks on either flank shouldered massive glaciers by the score. Here is indeed a glorious sight. No spot in all the Alpine world offers in so small a compass so many truly wonderful things. Six mighty glaciers flowing from the mountains on either side of Berg Lake, mingle their streams in its emerald waters. Nor are these baby glaciers, for not one of them is less than a quarter of a mile wide across its foot, and one of them is about a mile wide and four or five miles long.

From Grand Forks to Tête Jaune Cache, is about fourteen miles, the railway continues on the south side of the Fraser and the scenery does not lose any of its grandeur. Snow-capped mountains of high altitude on either side. At Tête Jaune Cache, mountains in every direction, the principal one being Mica Mountain (9,600 ft.). At this point there is nothing of particular interest outside the scenic attractions. A band of about twenty-five Indians have a permanent camp here and are the only inhabitants of the place at present.

The distance from Tête Jaune Cache to Fort George by the Grand Trunk Pacific when completed will be about 180 miles. The distance by the river is 320 miles, owing to its winding course. This part of the journey must at present be made by canoe and arrangements for same should be made as far as possible in advance as there are not any canoes at Tête Jaune Cache and they have to be brought up from Fort George taking about 20 days for the trip—going down the river the distance is covered in 6 days owing to the swift current of the Fraser.



SIWASH CANOE-MEN ON THE FRASER

#### HOW TO REACH THE MOUNTAINS

FROM the east the Grand Trunk Railway System offers the best routes and means of travel and patrons may reach Winnipeg either via Chicago and St. Paul or Duluth and thence via Grand Trunk Pacific Railway, or via Grand Trunk Railway System to Sarnia, Ontario, thence via the palatial steamers of the Northern Navigation Company to Port Arthur, Fort William and Westfort. At the latter point the Express trains are taken for Winnipeg and thence via the Grand Trunk Pacific to destination. Visitors going into the mountains will be able to secure accommodation on the service in effect so far as is being operated by the construction department, which it is expected will take passengers about 235 miles west of Edmonton. The balance of the journey to be made by pack horse or wagon. Guides, horses and outfits may be secured by applying to any of the parties named in list of guides in this publication. It is recommended, however, that guides should be secured as far in advance as possible and supplies, outfits and necessities needed for the trail secured at Edmonton.

From Fort George steamer may be taken down the Fraser to Soda Creek 155 miles, and from there to Ashcroft (a station on the main line of the Canadian Pacific Railway) by stage or automobile. The distance is 163 miles from Soda Creek to Ashcroft and can be made in an automobile in about 12 or 15 hours. The roads are good.

## Yellowhead Pass Route

When going in to the mountains intending travellers under no circumstances should make the journey from Fort George up stream to Tete Jaune Cache.

### GUIDES

J. W. Warner.....	Edson, Alberta.
Otto Brothers.....	Edmonton, Alberta.
William Teare (Jasper House).....	Edmonton, Alberta.
M. S. Teare (Jasper House).....	Edmonton, Alberta.
D. A. McPhee (Jasper House).....	Edmonton, Alberta.
Harvey McKenzie (Jasper House).....	Edmonton, Alberta.
H. G. Low.....	Golden, B.C.
Chas. Keller.....	Fort George, B.C.
Duncan Stewart, c/o D. H. McKinnon.....	Strathcona, Alberta.
Oswald C. Carruthers, c/o Pendennis Hotel.....	Edmonton, Alberta.
Walter Groat.....	Edmonton, Alberta.
T. Groat.....	Edmonton, Alberta.
John M. Giddie.....	Wainwright, Alberta

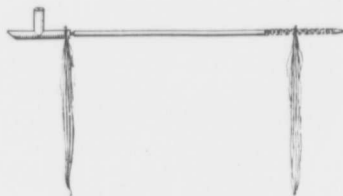
### GUIDES AND OUTFITTERS

The Leslie Company.....	Prairie Creek, Alberta
The Hudson's Bay Company.....	Edmonton, Alberta.
P. Michaelson.....	Edson, Alberta.

### WEST OF TETE JAUNE CACHE

G. B. Williams.....	Quesnel, B.C.
---------------------	---------------

The guides undertake to secure outfits, if desired.



## GAME LAWS

### ALBERTA GAME LAWS

Licenses : Residents, \$2.50 ; non-residents, \$25 ; (for birds) \$15 ; guests of resident, \$2.

#### Open Season

Goat and Sheep (2 males of each), Sept. 1st to Oct. 15th.  
Antelope, October 1st to November 1st. Bag limit (male only) 2.  
Moose, Caribou, Red Deer, November 1st to December 15th. Bag limit (male only) 1.  
Mink, Fisher, Marten, November 1st to March 31st, following year.  
Otter, Muskrat, November 1st to April 30th, following year.  
Duck, Geese, Swan, August 24th to December 31st.  
Crane, Snipe, Plover, Curlew, September 1st to December 31st.  
Grouse, Partridge, Pheasant, Chicken, October 1st to November 1st. Bag limit : 20 birds a day or 200 for the season.  
Permit from Minister of Agriculture necessary to export game.  
No person shall buy or sell any game heads unless branded by the Department.

### BRITISH COLUMBIA GAME LAWS

#### Big Game

Moose (bull), September 1st to December 31st. Females and calves under one year protected.  
Deer, September 1st to December 14th. Fawn under one year protected.  
Caribou, September 1st to December 31st. Females and calves protected at all times.  
Elk (wapiti), September 1st to December 31st. Females and calves under two years protected.  
Mountain Goat and Sheep, September 1st to November 14th. Mountain Sheep, Ewes and Lambs, protected.  
Not more than three Caribou may be killed by one person in any season, nor more than five Deer, two (bull) Elk, two (bull) Moose, two (bull) Wapiti, three Mountain Goat or two Mountain Sheep (rams) or one in Kootenay District.  
The buying and selling of heads of Mountain Sheep, Elk, Moose or Caribou is prohibited.

#### Small Game

Land Otter and Marten, November 1st to March 31st.

#### Hunting License

The fee to be paid for a general license to hunt for or shoot any animal or bird, and to angle, shall be \$1.00, but such license shall not give the holder the right to kill more than two moose, two wapiti, two mountain rams of any one species, or more than three in all ; three goats, three caribou and three deer, any one species, or more than five in all ; or more than two hundred and fifty ducks. Such license shall only hold good between January 1st and December 31st of the year it is issued.

The fee for a license to hunt bear in the spring between the 1st day of January and the 15th day of July shall be twenty-five dollars.

The fee to be paid for a season's license to shoot birds shall be fifty dollars. Such license to hold good from September 1st until March 31st in the following year : Provided, that the Provincial Game Warden may issue a special license to kill game birds to British subjects who are not residents of this Province, for a fee of five dollars a week.

#### Fishing

Salmon Trout, November 14th to September 30th.

Salmon Angling, no close season.

Trout, other than Salmon, March 26th to November 14th.

Sturgeon, July 16th to May 31st, following year.

Whitefish, November 14th to September 30th, following year.

Fee to be paid for a license to angle shall be \$5.00, such license to hold good for one year from the date of issue.

**These Game Laws are subject to change.**

AGENCIES

GRAND TRUNK SYSTEM AGENCIES

For further particulars, apply to any of the following agents :-

- Alexandria Bay, N.Y., CORNWALL BROS., Ticket Agents.  
 Battle Creek, Mich., L. J. BUSH, Passenger Agent, G.T. Ry. Station  
 Bay City, Mich., FRED. C. WHERRETT, Passenger Agent, G.T. Ry. Station.  
 Boston, Mass., E. H. BOYNTON, New England Pass. Agt., 256 Washington St.  
 Brockville, Ont., J. H. FULFORD, Ticket Agent.  
 Buffalo, N.Y., H. M. MORGAN, City Pass. and Ticket Agt., 285 Main St.  
 Chicago, Ill., C. G. ORTTENBURGER, City Pass. and Tkt. Agt., 301 So. Clark St.  
 Cortland, N.Y., D. P. DREWERY, Trav. Pass. Agent, 6 Burgess Bldk.  
 Detroit, Mich., GEO. W. WATSON, City Pass. and Ticket Agt., 118 Woodward Ave.  
 Grand Rapids, Mich., C. A. JUSTIN, City Pass. and Ticket Agt., G.T. Ry. Station.  
 Hamilton, Ont., C. E. MORGAN, City Pass. and Ticket Agent, 11 James St. North.  
 Kansas City, Mo., GAY W. NORMAN, Trav. Pass. Agent, 327 Sheidley Building.  
 Kingston, Ont., J. P. HANLEY, City Passenger and Ticket Agent.  
 Lewiston, Me., F. P. CHANDLER, Agent, G.T. Ry. Station.  
 London, Ont., R. E. RUSE, City Pass. and Tkt. Agt., cor. Richmond and Dundas Streets.  
 Los Angeles, Cal., W. H. BULLEN, Pacific Coast Agt., 302 W. 10th Bldg.  
 Milwaukee, Wis., CROSBY TRANSPORTATION CO., 396 East Water St.  
 Montreal, Que., J. QUINLAN, District Passenger Agent, Bonaventure Station.  
 " " W. H. CLANCY, City Passenger and Ticket Agent, 130 St. James St.  
 Mount Clemens, Mich., CASPER CZIEK, City Pass. and Tkt. Agt., 12 So. Gratiot Ave.  
 New York, N.Y., F. P. DWYER, Gen. Agt. Pass. Dept., Railway Exchange, 290 Broadway.  
 Niagara Falls, N.Y., W. J. HAMILTON, Ticket Agent, 1 Falls St.  
 Ogdensburg, N.Y., GEO. S. MEAGHER, Ticket Agent, 55 State St.  
 Ottawa, Ont., PERCY M. BUTTLER, City Pass. and Tkt. Agt., Russell House Bldk.  
 Peterboro, Ont., B. A. ROSE, City Passenger and Ticket Agent.  
 Pittsburg, Pa., W. ROBINSON, Trav. Pass. Agt., 507 Park Bldg.  
 Port Huron, Mich., F. H. POTTER, Tkt. Agt., G.T. Ry. Station.  
 Portland, Me., C. E. TENNY, Passenger Agent, G.T. Ry. Station.  
 Quebec, Que., GEO. H. STOTT, City Pass. and Ticket Agent, cor. St. Anne and du Fort Sts.  
 and Ferry Landing, Dalhousie St.  
 Saginaw, Mich., HUGH E. QUICK, Passenger Agt., G.T. Ry. Station.  
 San Francisco, Cal., F. W. HOPPER, Gen. Agt. Pass. Dept., 399 Monadnock Building.  
 Seattle, Wash., J. H. BURGIS, Gen. Agt. Pass. Dept., First Ave. and Yesler Way.  
 " " J. H. GOODIER, City Pass. and Tkt. Agt., First Ave. and Yesler Way.  
 Sherbrooke, Que., C. H. FOSS, City Passenger and Ticket Agent, 2 Wellington St.  
 South Bend, Ind., C. A. McNUTT, Passenger Agent, G.T. Ry. Station.  
 St. Paul, Minn., W. J. GILKERSON, Trav. Pass. Agent, Ryan Hotel Block, 400 Robert Street.  
 Toronto, Ont., A. E. DUFF, District Passenger Agent, Union Station.  
 Toronto, Ont., C. E. HORNING, City Pass. and Ticket Agent, N.W. cor. King and Yonge Sts.  
 Vancouver, B.C., H. G. SMITH, City Pass. and Ticket Agent, 527 Granville St.  
 Victoria, B.C., W. E. DUPEROW, City Pass. and Ticket Agent.  
 Winnipeg, Man., W. J. QUINLAN, District Passenger Agent, 260 Portage Ave.

European Traffic Department

- F. G. Salter, European Traffic Manager, 17-19 Cockspur St., London, S.W., England.  
 Antwerp, Belgium, P. A. CLEWS, Acting General Agent, 10-21 Canal des Brasseurs.  
 Birmingham, Eng., MORISON, POLLEXFEN & BLAIR, 6 Victoria Sq.  
 Genoa, Italy, A. VALLOTTA, Agent, Via St. Lorenzo II.  
 Glasgow, Scot., J. M. WALKER, General Agent, 75 Union Street.  
 Liverpool, Eng., WM. CUTHBERTSON, General Ass't, 20 Water St.  
 London, E.C., Eng., F. G. ENGLISH, General Agent, 44, 45 and 46 Leadenhall St.  
 Paris, France, PITT & SCOTT, Ticket Agents, 47 Rue Cambon.  
 Sheffield, Eng., J. W. DAWSON, Agent, 7 Haymarket.

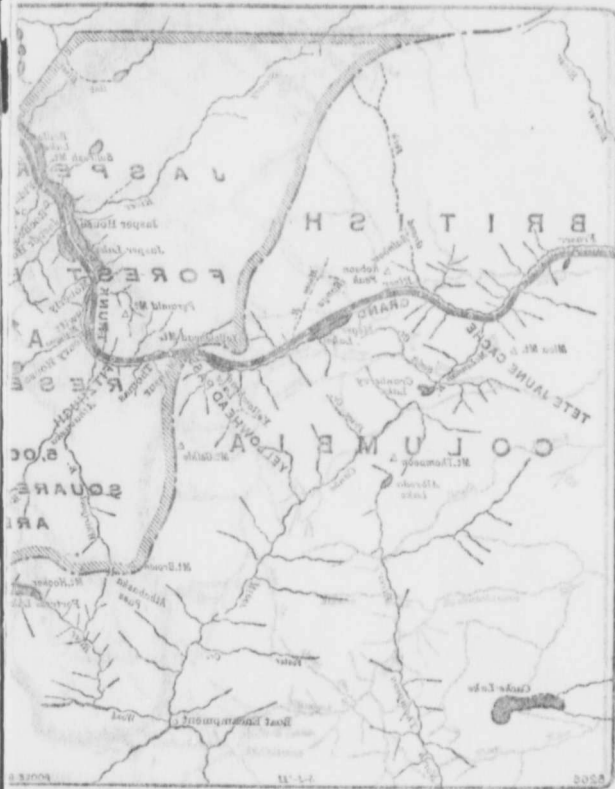
<b>CHARLES M. HAYS,</b> President, MONTREAL, QUE.	<b>E. J. CHAMBERLIN,</b> Vice-President and General Manager, WINNIPEG, MAN.	<b>W. E. DAVIS,</b> Passenger Traffic Manager, MONTREAL, QUE.
<b>G. T. BELL,</b> Assistant Passenger Traffic Manager, MONTREAL, QUE.		<b>W. P. HINTON,</b> General Passenger Agent, WINNIPEG, MAN.



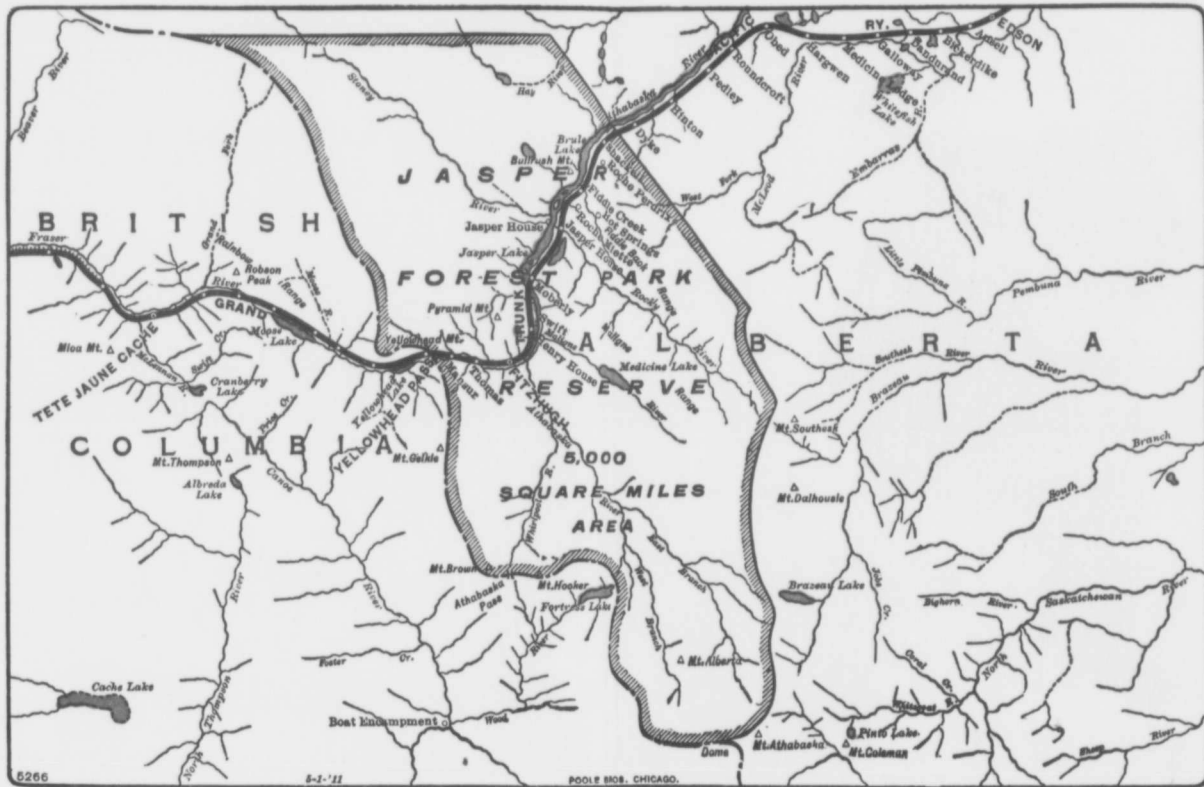
FOUR  
FIVE



THE &  
HERALD  
PRESS OF  
MONTREAL  
& DESIGNERS  
& PRINTERS



MAP SHOWING ROUTE OF THE GRAND TRUNK ROAD



MAP SHOWING ROUTE OF THE GRAND TRUNK PACIFIC RAILWAY THROUGH THE CANADIAN ROCKIES

