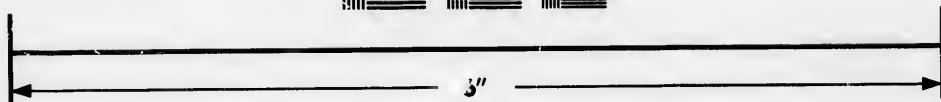
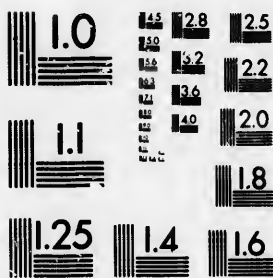


**IMAGE EVALUATION
TEST TARGET (MT-3)**



**Photographic
Sciences
Corporation**

23 WEST MAIN STREET
WEBSTER, N.Y. 14580
(716) 872-4503

2.8
2.5
2.2
2.0
1.8

**CIHM/ICMH
Microfiche
Series.**

**CIHM/ICMH
Collection de
microfiches.**



Canadian Institute for Historical Microreproductions / Institut canadien de microreproductions historiques

1.0
0.8
0.7

© 1986

Technical and Bibliographic Notes/Notes techniques et bibliographiques

The Institute has attempted to obtain the best original copy available for filming. Features of this copy which may be bibliographically unique, which may alter any of the images in the reproduction, or which may significantly change the usual method of filming, are checked below.

L'Institut a microfilmé le meilleur exemplaire qu'il lui a été possible de se procurer. Les détails de cet exemplaire qui sont peut-être uniques du point de vue bibliographique, qui peuvent modifier une image reproduite, ou qui peuvent exiger une modification dans la méthode normale de filmage sont indiqués ci-dessous.

- | | |
|--|--|
| <input type="checkbox"/> Coloured covers/
Couverture de couleur | <input checked="" type="checkbox"/> Coloured pages/
Pages de couleur |
| <input type="checkbox"/> Covers damaged/
Couverture endommagée | <input type="checkbox"/> Pages damaged/
Pages endommagées |
| <input type="checkbox"/> Covers restored and/or laminated/
Couverture restaurée et/ou pelliculée | <input type="checkbox"/> Pages restored and/or laminated/
Pages restaurées et/ou pelliculées |
| <input type="checkbox"/> Cover title missing/
Le titre de couverture manque | <input type="checkbox"/> Pages discoloured, stained or foxed/
Pages décolorées, tachetées ou piquées |
| <input type="checkbox"/> Coloured maps/
Cartes géographiques en couleur | <input type="checkbox"/> Pages detached/
Pages détachées |
| <input type="checkbox"/> Coloured ink (i.e. other than blue or black)/
Encre de couleur (i.e. autre que bleue ou noire) | <input checked="" type="checkbox"/> Showthrough/
Transparence |
| <input type="checkbox"/> Coloured plates and/or illustrations/
Planches et/ou illustrations en couleur | <input type="checkbox"/> Quality of print varies/
Qualité inégale de l'impression |
| <input type="checkbox"/> Bound with other material/
Relié avec d'autres documents | <input type="checkbox"/> Includes supplementary material/
Comprend du matériel supplémentaire |
| <input type="checkbox"/> Tight binding may cause shadows or distortion
along interior margin/
La reliure serrée peut causer de l'ombre ou de la
distorsion le long de la marge intérieure | <input type="checkbox"/> Only edition available/
Seule édition disponible |
| <input type="checkbox"/> Blank leaves added during restoration may
appear within the text. Whenever possible, these
have been omitted from filming/
Il se peut que certaines pages blanches ajoutées
lors d'une restauration apparaissent dans le texte,
mais, lorsque cela était possible, ces pages n'ont
pas été filmées. | <input type="checkbox"/> Pages wholly or partially obscured by errata
slips, tissues, etc., have been refilmed to
ensure the best possible image/
Les pages totalement ou partiellement
obscurcies par un feuillet d'errata, une pelure,
etc., ont été filmées à nouveau de façon à
obtenir la meilleure image possible. |
| <input checked="" type="checkbox"/> Additional comments: /
Commentaires supplémentaires: | [Printed ephemera] 1 sheet (verso blank) |

This item is filmed at the reduction ratio checked below/
Ce document est filmé au taux de réduction indiqué ci-dessous.

10X	14X	18X	22X	26X	30X
<input type="checkbox"/>	<input type="checkbox"/>	<input type="checkbox"/>	<input type="checkbox"/>	<input checked="" type="checkbox"/>	<input type="checkbox"/>
12X	16X	20X	24X	28X	32X

The copy filmed here has been reproduced thanks to the generosity of:

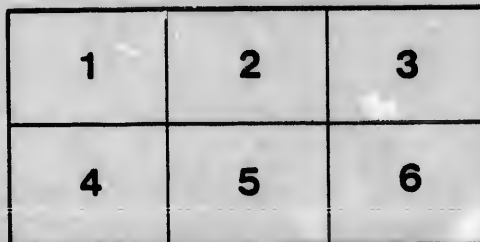
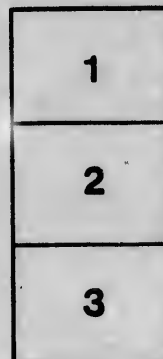
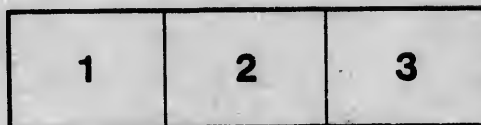
D. B. Weldon Library
University of Western Ontario
(Regional History Room)

The images appearing here are the best quality possible considering the condition and legibility of the original copy and in keeping with the filming contract specifications.

Original copies in printed paper covers are filmed beginning with the front cover and ending on the last page with a printed or illustrated impression, or the back cover when appropriate. All other original copies are filmed beginning on the first page with a printed or illustrated impression, and ending on the last page with a printed or illustrated impression.

The last recorded frame on each microfiche shall contain the symbol \rightarrow (meaning "CONTINUED"), or the symbol ∇ (meaning "END"), whichever applies.

Maps, plates, charts, etc., may be filmed at different reduction ratios. Those too large to be entirely included in one exposure are filmed beginning in the upper left hand corner, left to right and top to bottom, as many frames as required. The following diagrams illustrate the method:



L'exemplaire filmé fut reproduit grâce à la générosité de:

D. B. Weldon Library
University of Western Ontario
(Regional History Room)

Les images suivantes ont été reproduites avec le plus grand soin, compte tenu de la condition et de la netteté de l'exemplaire filmé, et en conformité avec les conditions du contrat de filmage.

Les exemplaires originaux dont la couverture en papier est imprimée sont filmés en commençant par le premier plat et en terminant soit par la dernière page qui comporte une empreinte d'impression ou d'illustration, soit par le second plat, selon le cas. Tous les autres exemplaires originaux sont filmés en commençant par la première page qui comporte une empreinte d'impression ou d'illustration et en terminant par la dernière page qui comporte une telle empreinte.

Un des symboles suivants apparaîtra sur la dernière image de chaque microfiche, selon le cas: le symbole \rightarrow signifie "A SUIVRE", le symbole ∇ signifie "FIN".

Les cartes, planches, tableaux, etc., peuvent être filmés à des taux de réduction différents. Lorsque le document est trop grand pour être reproduit en un seul cliché, il est filmé à partir de l'angle supérieur gauche, de gauche à droite, et de haut en bas, en prenant le nombre d'images nécessaire. Les diagrammes suivants illustrent la méthode.

ails
du
odifier
une
mage

rrata
to

pture,
n à



32X

Schedule of Made by Her Majesty's Justices of the From September Sessions,

THE SEAFORTH EXPOSITOR.

NAME OF PROSECUTOR	NAME OF DEFENDANT	NATURE OF CHARGE	DATE OF CONVICTION	NAME OF CONVICTING JUSTICE
Wm. H. May	Wm. Read	Assault		Geo. Brown
Arthur Kelly	Geo. Johnston	Non-payment of wages		do do
Samuel Smith	Jno. Papple	Assault	June 15th,	do do
do	Mary Papple	Abusive language	do	do do
do	Ann Mathison	do do	do	do do
Wm. Arken	Jno. Otterson	Assault	do 23rd,	do do
Geo Harvey	Wm. Bell	Abusive language	do	do do
Martha Otterson	Jno. Otterson	do do		do do
Wm. Core	Wm. Hammill	Disorderly and drunk	Sept. 3rd,	do do
do	Jno. Lockwood	do do	do 5th,	do do
Martha Otterson	Jno. Otterson	Abusive language	Oct. 8th,	do do
Jno. Cunningham	Donald McTavish	Assault	Nov. 19th,	do do
H. A. Miller	Foster	do	Oct. 16th,	Charles Burrows
do	do	Insulting language	do	do do
Chas. Burrows	John Crant	Assault and battery	Dec. 6th,	do do
Hy. Neil	Jamuel Neil	Misdemeanor	do	do do
do	do	Articles of peace	do	do do
John E. Martin	David Grant	Assault	Sept. 20th,	C. Crabb
Lewis Elliott	Augusta Morgan	do	do 21st,	do do
Archd. Hadden	Charles Thomas	do	Oct. 26th,	do do
Sarah McNeil	Hugh McNeil	do	Nov. 10th,	do do
Hugh Gardner	Thos. Doherty	Larceny	do 30th,	do do
William Sin	Dan McLeod	Assault	Oct. 21st,	John Crawford
Sterling Par	John Saitelo	do	Dec. 3rd,	do do
Henry Nelson	Thos. Elston	Non-payment of wages	Oct. 14th,	Thos. Gidley
Jane Beatty	do	Assault	do 26th,	do do
do	do	do	do 28th,	Robert Dew
do	do	Non-payment of wages	do	Archibald Bishop
Arch Hadden	Charles Thomas	Assault	do 25th,	Thos. Gidley
Lorenzo Franc	George Beer	Non-payment of wages	Nov. 25th,	Robert Dew
Jane McNeil	David Hoist	Nuisance	August 30th,	C Crabb
James Anderson	Walter Burgess	Non-payment of wages	Oct. 19th,	Wm. Mooney
Walter Renwicks	James McKay	Assault	do 16th,	do do
Catleb Raterson	H. Hubertan	Non-payment of wages	Nov. 19th,	S G. McCaughey
Wm. Phair	T. Wallace	Injury to cattle	do 29th,	do do
Margaret Rogers	James Rogers	Assault	Oct. 2nd,	do do
Thos Burke	Thos. Demody	do	do 8th,	John O'Connell
Wm. Hogen	Patrick Griffin	do	Dec 4th,	Wm. H. Reid
Patrik Griffin	John Hoggin	Threats	do 11th,	John Tavish
Margaret Twist	Alexander Twist	Abusing wife	August 26th,	Wm. H. Reid
Neil Montgomery	Wm. McKenzie	Evading market fees	do	D. L. Sills
Jno. M. Cowan	Peter McGrigor	Assault and battery	do	S. G. McCaughey
Samuel Stark	Alexander Twist	Abusive language	Sept. 7th,	D. L. Sills
Alexander Cardino	Wm. Thompson	do do	do	S. G. McCaughey
do	Margaret Simpson	do do	do 10th,	D. L. Sills
Thos Stevens	Hugh Sweney	Disorderly and drunk	do	do do
Wm. N. Watson	Wm. Hall	Breaking buggy	do 24th,	do do
Peter Baxter	Fred Howard	Drunk and disorderly	Oct. 13th,	do do
Wm. Munroe	James Richey	Assault	Dec. 6th,	do do
Wm. M. y	Jno. Clark	Cruelty to a dog	June 12th,	Wm. Coilson
R. C. Rogerson	Hankin Lawson	Throwing down a fence	Sept. 20th,	do do
			Oct. 13th,	Thos. Holmes
				Jas Gorman

Certified to be a true Copy of all Lists of Convictions returned to this Office, by the Justices

Office of the Clerk of the Peace, 27th December, 1869.

Table of Convictions.

Justices of the Peace within the County of Huron.

from September Sessions, 1869, to December, 1869.

DATE OF CONVICTION	NAME OF CONVICTING JUSTICE	AMOUNT OF PENALTY, FINE OR DAMAGE.	TIME WHEN PAID, OR TO BE PAID TO SAID JUSTICE.	BY WHOM PAID OVER BY SAID JUSTICE.	REMARKS.
	Geo. Brown				Dismissed.
	do do				do
5th	do do	\$1.00	Forthwith,	Township Treasurer,	
	do do	\$1.00	do	do do do	
	do do	\$1.00	do	do do do	
rd,	do do	\$2.00	do	do do do	
	do do				do
	do do				do
rd,	do do	\$2.00	do	Village Treasurer.	
h,	do do	\$5.00		do do do	
h,	do do	\$1.00		Township Treasurer.	
9th,	do do	\$2.00		Village Treasurer.	
5th,	Charles Burrows			Case withdrawn defendant paying costs	
	do do			do do do	
th,	do do	\$4.00	21 days,		Not yet paid.
	do do				Parties settled.
	do do				Defendant paid costs.
20th,	C. Crabb	\$9.00	Forthwith,	Town Treasurer.	
1st,	do do	25cts.	do	do do	
3th,	do do	25cts.	do		Not yet paid.
0th,	do do	25cts.	do	do do	
th,	do do		do	do do	Committed for trial.
1st,	John Crawford	\$4.00	do	Township Treasurer.	Not yet paid.
rd,	do do	\$5.00	do	do do	do do
4th,	Thos. Gidley	\$7.00	21 days,	Prosecutor.	
5th,	do do	\$3.00	Forthwith	County Treasurer.	
	do do				
th,	Robert Dew	\$2.00	do	do do	
	Archibald Bishop.				
	Thos. Gidley	62cts.	do	do do	
	Robert Dew				
5th,	C. Crabb	25cts.			
25th,	Wm. Mooney	5.75	21 days,	Prosecutor.	
at 30th,	do do	1.00	1 month	County Treasurer.	
9th,	do do	3.75	21 days,		
8th,	S. G. McCaughey	1.00		Village Treasurer.	
19th,	do do	2.75		To plaintiff,	
9th,	do do	1.00		To Treasurer.	
nd,	do do	5.00		do do	
th,	John O'Connell	1.00	8 days,	Township Treasurer.	
th,	Wm. H. Reid	2.00	21 days,		
	John Tavish			Patrick Griffin bound over to keep the peace.	
th,	Wm. H. Reid	2.00		Wm. Hoggen bound over to keep the peace.	
at 26th,	D. L. Sills	20cts.	3 days,	Village Treasurer.	
	S. G. McCaughey				
	D. L. Sills	20cts.	10 days,	do do	
	do do	6.00	Forthwith,	Township Treasurer.	
	D. L. Sills				
	S. G. McCaughey	1.00	do	Village Treasurer.	
0th,	D. L. Sills	20cts.	3 days,	do do	
	do do	20cts.	do	do do	
4th,	do do	1.00	15 days,	do do	
3th,	do do	1.00	3 days,	do do	
3th,	do do	5.00	do	do do	Not yet paid.
12th,	Wm. Coilson	1.00	Forthwith,	County Treasurer.	
20th,	do do	1.00	do		
	do do				
3th,	Thos. Holmes	2.00	do		
	Jas Gorman				

is Office, by the Justices for the County of Huron, for the Quarter ending December, 1869.

DAN LIZARS, Clerk of the Peace, County of Huron.

