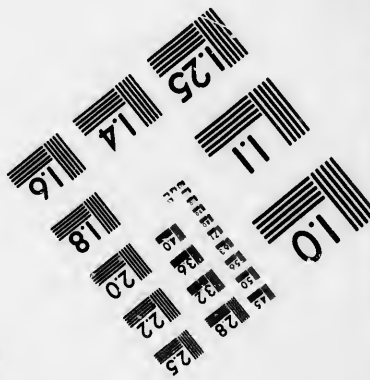
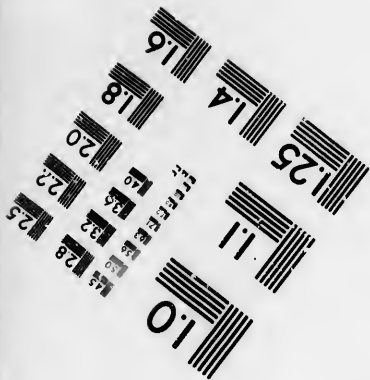
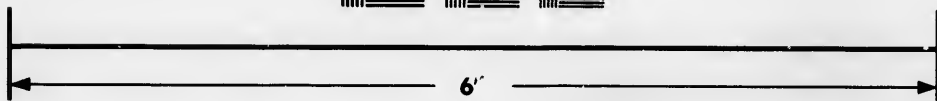
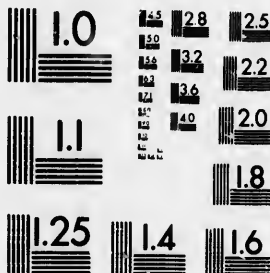


**IMAGE EVALUATION
TEST TARGET (MT-3)**



**Photographic
Sciences
Corporation**

23 WEST MAIN STREET
WEBSTER, N.Y. 14580
(716) 872-4503

**CIHM/ICMH
Microfiche
Series.**

**CIHM/ICMH
Collection de
microfiches.**



Canadian Institute for Historical Microreproductions / Institut canadien de microreproductions historiques

© 1986

Technical and Bibliographic Notes/Notes techniques et bibliographiques

The Institute has attempted to obtain the best original copy available for filming. Features of this copy which may be bibliographically unique, which may alter any of the images in the reproduction, or which may significantly change the usual method of filming, are checked below.

L'Institut a microfilmé le meilleur exemplaire qu'il lui a été possible de se procurer. Les détails de cet exemplaire qui sont peut-être uniques du point de vue bibliographique, qui peuvent modifier une image reproduite, ou qui peuvent exiger une modification dans la méthode normale de filmage sont indiqués ci-dessous.

- Coloured covers/
Couverture de couleur
- Covers damaged/
Couverture endommagée
- Covers restored and/or laminated/
Couverture restaurée et/ou pelliculée
- Cover title missing/
Le titre de couverture manque
- Coloured maps/
Cartes géographiques en couleur
- Coloured ink (i.e. other than blue or black)/
Encre de couleur (i.e. autre que bleue ou noire)
- Coloured plates and/or illustrations/
Planches et/ou illustrations en couleur
- Bound with other material/
Relié avec d'autres documents
- Tight binding may cause shadows or distortion along interior margin/
La reliure serrée peut causer de l'ombre ou de la distorsion le long de la marge intérieure
- Blank leaves added during restoration may appear within the text. Whenever possible, these have been omitted from filming/
Il se peut que certaines pages blanches ajoutées lors d'une restauration apparaissent dans le texte, mais, lorsque cela était possible, ces pages n'ont pas été filmées.

- Coloured pages/
Pages de couleur
- Pages damaged/
Pages endommagées
- Pages restored and/or laminated/
Pages restaurées et/ou pelliculées
- Pages discoloured, stained or foxed/
Pages décolorées, tachetées ou piquées
- Pages detached/
Pages détachées
- Showthrough/
Transparence
- Quality of print varies/
Qualité inégale de l'impression
- Includes supplementary material/
Comprend du matériel supplémentaire
- Only edition available/
Seule édition disponible
- Pages wholly or partially obscured by errata slips, tissues, etc., have been refilmed to ensure the best possible image/
Les pages totalement ou partiellement obscurcies par un feuillet d'errata, une pelure, etc., ont été filmées à nouveau de façon à obtenir la meilleure image possible.

- Additional comments: [Printed ephemera] 1 sheet (verso blank)
Commentaires supplémentaires:

This item is filmed at the reduction ratio checked below/
Ce document est filmé au taux de réduction indiqué ci-dessous.

10X	12X	14X	16X	18X	20X	22X	24X	26X	28X	30X	32X
						/					

The copy filmed here has been reproduced thanks to the generosity of:

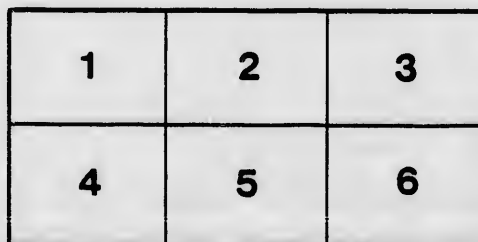
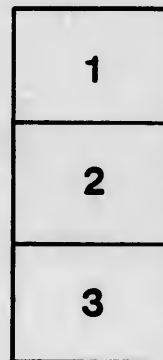
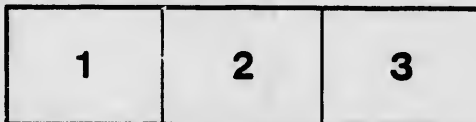
D. B. Weldon Library
University of Western Ontario
(Regional History Room)

The images appearing here are the best quality possible considering the condition and legibility of the original copy and in keeping with the filming contract specifications.

Original copies in printed paper covers are filmed beginning with the front cover and ending on the last page with a printed or illustrated impression, or the back cover when appropriate. All other original copies are filmed beginning on the first page with a printed or illustrated impression, and ending on the last page with a printed or illustrated impression.

The last recorded frame on each microfiche sheet contains the symbol \rightarrow (meaning "CONTINUED"), or the symbol ∇ (meaning "END"), whichever applies.

Maps, plates, charts, etc., may be filmed at different reduction ratios. Those too large to be entirely included in one exposure are filmed beginning in the upper left hand corner, left to right and top to bottom, as many frames as required. The following diagrams illustrate the method:



L'exemplaire filmé fut reproduit grâce à la générosité de:

D. B. Weldon Library
University of Western Ontario
(Regional History Room)

Les images suivantes ont été reproduites avec le plus grand soin, compte tenu de la condition et de la netteté de l'exemplaire filmé, et en conformité avec les conditions du contrat de filmage.

Les exemplaires originaux dont le couverture en papier est imprimée sont filmés en commençant par le premier feuillet et en terminant soit par la dernière page qui comporte une empreinte d'impression ou d'illustration, soit par le second feuillet, selon le cas. Tous les autres exemplaires originaux sont filmés en commençant par la première page qui comporte une empreinte d'impression ou d'illustration et en terminent par la dernière page qui comporte une telle empreinte.

Un des symboles suivants apparaîtra sur la dernière image de chaque microfiche, selon le cas: le symbole \rightarrow signifie "A SUIVRE", le symbole ∇ signifie "FIN".

Les cartes, planches, tableaux, etc., peuvent être filmés à des taux de réduction différents. Lorsque le document est trop grand pour être reproduit en un seul cliché, il est filmé à partir de l'angle supérieur gauche, de gauche à droite, et de haut en bas, en prenant le nombre d'images nécessaire. Les diagrammes suivants illustrent la méthode.

STATEMENT OF RECEIPTS AND DISBURSMENTS OF THE COUNTY OF MELBOURNE FOR THE YEAR 1880

RECEIPTS.

	£	s.	d.
Balance in hands of Treasurer at last Statement	7,124	7	2½
County Rate	7,274	16	8
County of Elgin, Balance of Debentures	2,500	0	0
Dividend on Stock of G. W. Railway	1,750	0	0
Port Stauley Railway account of Interest	678	0	0
Debentures sold	74,949	5	11
Gore Bank Coupons retired by them	139	10	0
Rent of Toll-gates	2,940	5	1
Assessment	54	2	6
Revenue Inspector	113	7	9
School Appropriation Refunded	7	10	0
Provincial Government, to pay Drafts	1,050	0	3
Small sums Refunded	26	10	6
W. R. Macdonald, Account of Debentures	101	5	9
Wild Land Tax	1,175	7	0
Received from Collectors	6,773	13	3
Hawkers' Licences	12	0	0
Miscellaneous	1	5	0
Jury Fees	145	0	5
Interest Account	566	13	5
Lunatic Asylum	415	16	10
Bills Receivable	5,036	2	3
Fines from Magistrates	11	5	1
Advances Refunded	1,312	15	11
Deposits to Purchase Debentures	4,931	15	7
Government School Appropriation	223	7	10

Discount of
Interest ...
Payments
Payments
Collector of
Gore Bank
Loudon Sa
Port Staul
Agricultur
Township
Lunatic As
Ditto
Advances
Great Wes
Overseer
Governmen
Bridges
Administra
Magistrate
Township
School Sup
Wild Land
Repair to
Deposits t
Jury Serv
Payments
Road Deb
Provincial
Quarter S
W. R. Ma
John Wils
Jury Fees
Advances
Revenue
Bank of U
Coupons
Roads
Fee Fund
Incident
Disburse
Captain
R. Biddu
J. Fitzg

Jury Fees

STATEMENT OF REVENUES AND DISBURSEMENTS, OF THE COUNTY OF MIDDLESEX, FOR THE YEAR 1855.

DISBURSEMENTS.

£ s. d.		£ s. d.
7,124 7 2½	Discount on Debentures	9,547 6 8
7,274 16 8	Interest	355 4 2
2,500 0 0	Payments to Townships	190 18 7
1,750 0 0	Payments to Contractors	15,152 8 4
678 0 0	Collector of Lobo	26 15 0
74,949 5 11	Gore Bank	4,639 10 0
139 10 0	London Savings' Bank	750 0 0
2,940 5 1	Port Stanley Railroad	5,630 16 0
54 2 6	Agricultural Society	3,150 0 0
113 7 9	Township Treasurers' per centage	88 11 1
7 10 0	Lunatic Asylum	3 4 2
1,050 0 3	Ditto ditto	517 10 5
26 10 6	Advances to Contractors	1,921 3 7
101 5 9	Great Western Railway Coupons	1,117 10 0
1,175 7 0	Overseer	36 7 6
6,773 13 3	Government School Appropriation	119 12 10
12 0 0	Bridges	129 17 0
1 5 0	Administration of Justice	1,190 16 6
145 0 5	Magistrates' Drafts	257 9 3
566 13 5	Township of Southwold, selection of Jurors	7 7 3
415 16 10	School Superintendents	147 14 6
5,036 2 3	Wild Land Tax	606 4 2
11 5 1	Repair to Gaol	700 4 4
1,512 15 11	Deposits to buy Debentures	2,153 18 9
4,931 15 7	Jury Services	181 9 6
223 7 10	Payments to Townships	95 15 0½
	Road Debentures Redeemed	7,682 18 8
	Provincial Government paid Draft	25 0 0
	Quarter Sessions Draft	68 5 0
	W. R. Macdonald, Agent	101 5 9
	John Wilson	75 3 9
	Jury Fees	636 6 8
	Advances to Constables	387 7 4
	Revenue Inspector	167 10 3
	Bank of Upper Canada, to pay Coupons	2,000 0 0
	Coupons	7,711 6 4
	Roads	23,308 14 10
	Fee Fund	227 15 0
	Incidental Expenses	2,050 9 6
	Disbursements	1,206 16 6
	Captain Burrows Dep. Refunded	162 3 2
	R. Biddulph ditto	185 0 0
	J. Fitzgerald bal. ditto	25 0 0

Jury Fees
 Advances
 Revenue
 Bank of U
 Coupons
 Roads
 Fee Fund
 Incidental
 Disburc
 Captain B
 R. Biddul
 J. Fitzger
 W. Fitzge
 Ba

£119,814 4 21

Statement of Books on J

RECEIPTS.

	£	s.	d.
Cash in hands of Treasurer	24,846	19	9 $\frac{3}{4}$
Railway Stock—			
Great Western Railroad	£25,000	0	0
Port Stanley Railroad	25,000	0	0
	50,000	0	0
Interest Port Stanley Railroad Stock	822	0	0
Bills Receivable	116	1	0
Fee Fund	61	15	0
County Rate, 1855	8,888	16	7
Dunwich	1	1	0 $\frac{1}{2}$
John Cameron, due on Commission	10	0	0
Toll-gates	919	15	0
Advance Account, Provisions for Criminals	799	18	11
Ditto Rymon, Wood for Gaol	203	13	5
Roads	108,008	0	7 $\frac{1}{2}$
Discount on Debentures	22,825	2	4

Handwritten: H^d - 250 per 200

Township
 Counties
 Ditto
 Drafts D
 Provincie
 Ditto
 Canada C
 Lunatic
 Fees, To
 Agricult
 Debentu
 Coupons
 Ditto Po
 Ditto G
 Sundries
 Ditto,
 Ditto,
 Debentu
 Ditto
 Ditto
 Ditto
 Ditto
 Ditto
 Provinc
 Ditto
 Deposit
 County

£217,506 3 8 $\frac{1}{2}$

JOHN BROW
 CHARLES M

Free Press Print.

Jury Fees	387 7 4
Advances to Constables	167 10 3
Revenue Inspector	2,000 0 0
Bank of Upper Canada, to pay Coupons	7,711 6 4
Coupons	23,308 14 10
Roads	227 15 0
Fee Fund	2,050 9 6
Incidental Expenses	1,296 16 3
Disbursements	162 3 2
Captain Burrows Dep. Refunded	185 0 0
R. Biddulph ditto	25 0 0
J. Fitzgerald bal. ditto	138 2 0
W. Fitzgerald ditto	24,846 19 3/4
Balance in hands of Treasurer	

£119,814 4 2 1/2

£119,814 4 2 1/2

Books on January 26th, 1856.

DISBURSEMENTS.

£	s.	d.		£	s.	d.
24,846	19	9 1/2	Townships	522	7	0
			Counties of Huron, Perth, and Bruce	3	2	11
			Ditto Oxford	5	3	0
			Drafts Drawn	7	5	7
50,000	0	0	Provincial Government bal. of C. J. Drafts	22	3	9
822	0	0	Ditto ditto Interest on Road Debt	225	0	0
116	1	0	Canada Company	50	0	0
61	15	0	Lunatic Asylum	77	12	11
8,888	16	7	Fees, Township Treasurers	485	15	1
1	1	0 1/2	Agricultural Society	200	0	0
10	0	0	Debentures Due 1855	869	15	0
919	15	0	Coupons under Bye-laws 10, 21, 29 and 36	445	14	8
799	18	11	Ditto Port Stanley Railroad	645	0	0
203	13	5	Ditto Great Western Railroad	47	10	0
108,008	0	7 1/2	Sundries, G. McLutosh	£0	18	9
22,828	2	4	Ditto, W. A. Warren	25	10	0
			Ditto, John Wilson	14	16	3
				41	5	0
			Debentures Great Western Railroad	£25,000	0	0
			Ditto Port Stanley Railroad	25,000	0	0
			Ditto under Bye-laws 6 and 10	4,000	0	0
			Ditto under Bye-law 21	20,000	0	0
			Ditto under Bye-law 29	99,870	5	0
			Ditto under Bye-law 36	32,550	0	0
				206,420	5	0
			Provincial Government for Roads, due 1860	4,500	0	0
			Ditto for Grammar School	110	0	0
			Deposits to buy Debentures	2,692	15	0
			County Account	135	8	9 1/2
				£217,506	3	8 1/2

£217,506 3 8 1/2

JOHN BROWN,
CHARLES MONSARRAT,

Auditors.

COUNTY OF ELGIN

