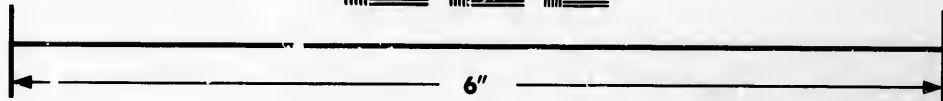
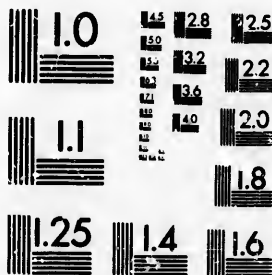


**IMAGE EVALUATION
TEST TARGET (MT-3)**



**Photographic
Sciences
Corporation**

23 WEST MAIN STREET
WEBSTER, N.Y. 14580
(716) 872-4503

1.8
2.0
2.2
2.5
2.8
3.2
3.6
4.0

**CIHM/ICMH
Microfiche
Series.**

**CIHM/ICMH
Collection de
microfiches.**



Canadian Institute for Historical Microreproductions / Institut canadien de microreproductions historiques

10
01

© 1982

Technical and Bibliographic Notes/Notes techniques et bibliographiques

The Institute has attempted to obtain the best original copy available for filming. Features of this copy which may be bibliographically unique, which may alter any of the images in the reproduction, or which may significantly change the usual method of filming, are checked below.

L'Institut a microfilmé le meilleur exemplaire qu'il lui a été possible de se procurer. Les détails de cet exemplaire qui sont peut-être uniques du point de vue bibliographique, qui peuvent modifier une image reproduite, ou qui peuvent exiger une modification dans la méthode normale de filmage sont indiqués ci-dessous.

- Coloured covers/
Couverture de couleur
- Covers damaged/
Couverture endommagée
- Covers restored and/or laminated/
Couverture restaurée et/ou pelliculée
- Cover title missing/
Le titre de couverture manque
- Coloured maps/
Cartes géographiques en couleur
- Coloured ink (i.e. other than blue or black)/
Encre de couleur (i.e. autre que bleue ou noire)
- Coloured plates and/or illustrations/
Planches et/ou illustrations en couleur
- Bound with other material/
Relié avec d'autres documents
- Tight binding may cause shadows or distortion along interior margin/
La reliure serrée peut causer de l'ombre ou de la distorsion le long de la marge intérieure
- Blank leaves added during restoration may appear within the text. Whenever possible, these have been omitted from filming/
Il se peut que certaines pages blanches ajoutées lors d'une restauration apparaissent dans le texte, mais, lorsque cela était possible, ces pages n'ont pas été filmées.
- Additional comments:/
Commentaires supplémentaires:

- Coloured pages/
Pages de couleur
- Pages damaged/
Pages endommagées
- Pages restored and/or laminated/
Pages restaurées et/ou pelliculées
- Pages discoloured, stained or foxed/
Pages décolorées, tachetées ou piquées
- Pages detached/
Pages détachées
- Showthrough/
Transparence
- Quality of print varies/
Qualité inégale de l'impression
- Includes supplementary material/
Comprend du matériel supplémentaire
- Only edition available/
Seule édition disponible
- Pages wholly or partially obscured by errata slips, tissues, etc., have been refilmed to ensure the best possible image/
Les pages totalement ou partiellement obscurcies par un feuillet d'errata, une pelure, etc., ont été filmées à nouveau de façon à obtenir la meilleure image possible.

This item is filmed at the reduction ratio checked below/
Ce document est filmé au taux de réduction indiqué ci-dessous.

10X	14X	18X	22X	26X	30X
<input type="checkbox"/>	<input type="checkbox"/>	<input type="checkbox"/>	<input checked="" type="checkbox"/>	<input type="checkbox"/>	<input type="checkbox"/>
12X	16X	20X	24X	28X	32X

The copy filmed here has been reproduced thanks to the generosity of:

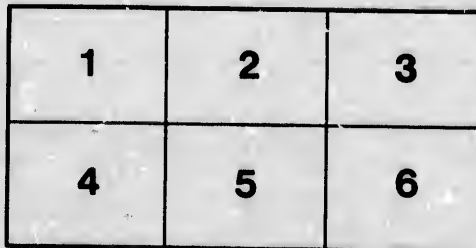
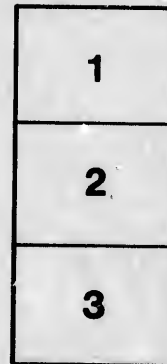
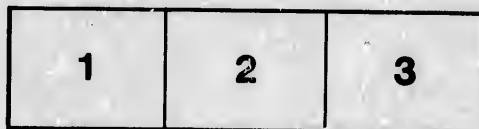
Harold Campbell Vaughan Memorial Library
Acadia University

The images appearing here are the best quality possible considering the condition and legibility of the original copy and in keeping with the filming contract specifications.

Original copies in printed paper covers are filmed beginning with the front cover and ending on the last page with a printed or illustrated impression, or the back cover when appropriate. All other original copies are filmed beginning on the first page with a printed or illustrated impression, and ending on the last page with a printed or illustrated impression.

The last recorded frame on each microfiche shall contain the symbol \rightarrow (meaning "CONTINUED"), or the symbol ∇ (meaning "END"), whichever applies.

Maps, plates, charts, etc., may be filmed at different reduction ratios. Those too large to be entirely included in one exposure are filmed beginning in the upper left hand corner, left to right and top to bottom, as many frames as required. The following diagrams illustrate the method:



L'exemplaire filmé fut reproduit grâce à la générosité de:

Harold Campbell Vaughan Memorial Library
Acadia University

Les images suivantes ont été reproduites avec le plus grand soin, compte tenu de la condition et de la netteté de l'exemplaire filmé, et en conformité avec les conditions du contrat de filmage.

Les exemplaires originaux dont la couverture en papier est imprimée sont filmés en commençant par le premier plat et en terminant soit par la dernière page qui comporte une empreinte d'impression ou d'illustration, soit par le second plat, selon le cas. Tous les autres exemplaires originaux sont filmés en commençant par la première page qui comporte une empreinte d'impression ou d'illustration et en terminant par la dernière page qui comporte une telle empreinte.

Un des symboles suivants apparaîtra sur la dernière image de chaque microfiche, selon le cas: le symbole \rightarrow signifie "A SUIVRE", le symbole ∇ signifie "FIN".

Les cartes, planches, tableaux, etc., peuvent être filmés à des taux de réduction différents. Lorsque le document est trop grand pour être reproduit en un seul cliché, il est filmé à partir de l'angle supérieur gauche, de gauche à droite, et de haut en bas, en prenant le nombre d'images nécessaire. Les diagrammes suivants illustrent la méthode.



— THE —

Londonderry Iron Co.

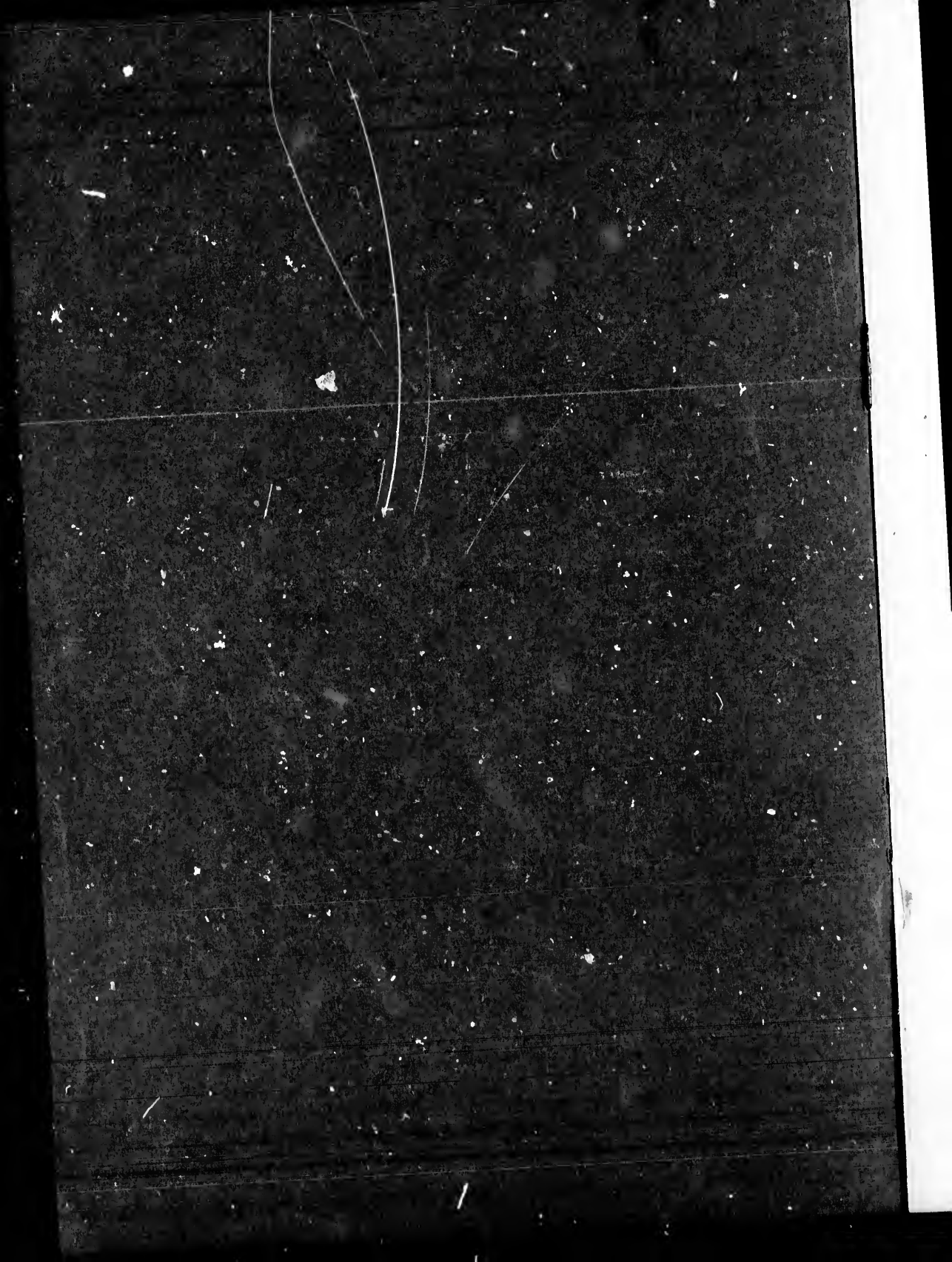
— * —
(LIMITED).
— * —

LONDONDERRY, NOVA SCOTIA.

— * —
CATALOGUE, 1896.



A
TS309
.L65



7
~~6698~~
~~1891~~

CATALOGUE OF GOODS

— MANUFACTURED BY —

THE LONDONDERRY IRON COMPANY (LTD).

LONDONDERRY, NOVA SCOTIA.

1896.

BRAND SIEMENS.

T. 501
. 165

Lo
Stre
We
Fou

All
Ore
Ver
Tou

All S
Iron
Dian
Squ

N

Londonderry Iron Company (Limited).

SIEMEN'S PIG IRON.

Low Phosphorus,
Strong for Machine
Work and General
Foundry Purposes.

Regular Brand,
for Stove Work and
General Castings,
Scrap Carrier.

High Phosphorus,
Basic Iron 2% and
over, very fluid.

SIEMEN'S PUDDLED BAR.

All Londonderry
Ore Mixture,
Very Strong,
Tough and Fibrous.

Standard Mixture,
for Bar Iron,
Strong and Fibrous.

Skelp,
Carries Good Cinder,
Welds well at Low
Heat.

SIEMEN'S BAR IRON.

All Sizes Round
Iron from $\frac{1}{4}$ to 4"
Diameter; Also
Square Iron.

Flat Bar Iron.
Oval Bar Iron.
Half Round Iron.

Beams, Tees,
Channels, Angles,
Rails, Zees,
All Sizes up to 12"

NAIL PLATE AND SHEETS.

1896

29039

Cast Iron Water & Gas Pipe.

BELL AND SPIGOT ENDS.

TURNED AND BORED ENDS.

PLAIN OR FLANGED ENDS.

Cast Iron Stop Collar Pipes.

ALL these Pipes are cast vertical, round plates, uniform thickness, tarred and tested to 300 lbs. p. sq. inch, with hammer test under pressure.

All Kinds of Special and Heavy Castings.

MACHINE WORK.

<i>HYDRAULIC MACHINERY,</i>) (Estimates and Drawings Free.
<i>TURBINES, PUMPS,</i>	
<i>HORIZONTAL and VERTICAL.</i>	
<i>STRUCTURAL WORK.</i>	
<i>BRIDGES, Etc., Etc.</i>	

Tenders given for complete Water or Gas Works systems.

CAST IRON WATER GAS PIPES,

WITH

Plain, Flanged, Bell & Spigot, Turned & Bored & Special Ends.

STANDARD WEIGHTS AND DIMENSIONS.

SIZE.	Thickness of Metal.	Weight per Foot.	Weight per Length.	Tons of 2240 lbs. per Mile.	Weight per Foot per 1-16 inch thickness.	Weight of Bell.	Weight of Flange.	Weight of Lead per Joint.	Weight of Hemp per Joint.	Thickness of Flange.	Diameter of Flange.	Diameter of Bolt Circle.	No. of Bolts.	Weight of Turned and Bored Joint.
3	$\frac{3}{8}$ "	15.5	186	36.5	2.36	14	7	6	$\frac{1}{16}$.75"	8"	6 $\frac{1}{4}$ "	4	17
4	$\frac{3}{8}$ "	19	228	44.75	2.99	17	9	8	$\frac{1}{16}$.75"	9"	7 $\frac{1}{4}$ "	4	21
6	$\frac{7}{16}$ "	30	360	70.75	4.27	27	15	13	$\frac{1}{8}$.875"	11"	9 $\frac{1}{4}$ "	6	33
8	$\frac{1}{2}$ "	42.5	510	100.25	5.57	40	24	17	$\frac{3}{16}$	1.	14"	12 $\frac{1}{4}$ "	8	49
9	$\frac{9}{16}$ "	52	624	122.5	6.22	47	30	19	$\frac{3}{16}$	1.125"	15"	13 $\frac{1}{4}$ "	8	57
10	$\frac{9}{16}$ "	60	720	141.5	6.86	54	34	20	$\frac{3}{16}$	1.25"	16"	14 $\frac{1}{4}$ "	8	66
12	$\frac{5}{8}$ "	76	912	179	8.13	69	44	22	$\frac{1}{4}$	1.375"	18"	16 "	10	84
14	$\frac{11}{16}$ "	110	1320	259.25	9.41	99	60	28	$\frac{1}{2}$	1.375"	21"	18 $\frac{1}{4}$ "	10	121
16	$\frac{3}{4}$ "	139	1668	327.75	10.73	126	63	33	$\frac{3}{4}$	1.375"	23"	20 $\frac{3}{4}$ "	12	154
20	$\frac{13}{16}$ "	185	2220	436	13.30	167	75	41	1	1.375"	27"	24 $\frac{3}{4}$ "	16	203
24	$\frac{15}{16}$ "	245	2940	577	15.86	221	80	49	1 $\frac{1}{2}$	1.375"	31"	28 $\frac{3}{4}$ "	18	270
30	1 $\frac{1}{8}$ "	351	4212	828	19.76	316	118	60	2	1.375"	38"	35 $\frac{1}{2}$ "	20	386
36	1 $\frac{1}{4}$ "	457	5895	1158	23.63	412	141	80	2 $\frac{1}{2}$	1.375"	45"	42 "	24	502

All Pipes cast from Siemen's Pig Iron—Dense, Strong, and of Uniform Thickness, and Tested to 300 pounds Water Pressure. Pipe can be made for and Tested to any required Pressure.

Standard length of Pipes 12 feet, exclusive of Bell End. Other Special Lengths can also be furnished. Thicker or Thinner Pipes than the Standard will be furnished to order, one Medium Weight besides the Standard being kept in stock.

We keep on hand a large stock of the sizes up to 12 inch, and can ship on receipt of order.

Pipe Specials, and General Water and Gas Fittings.

Tees, Crosses, Angles, Reducers, Drip Pots, etc.

All Internal Corners Curved with LARGE RADIUS to offer Least Resistance to Flow of Water.

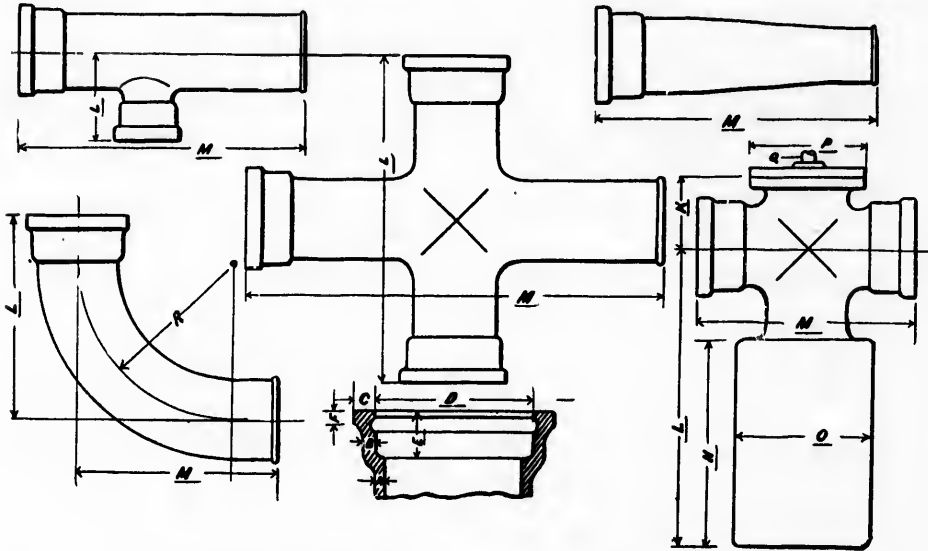


TABLE OF DIMENSIONS.

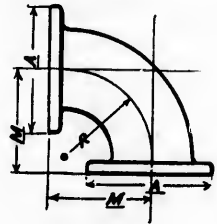
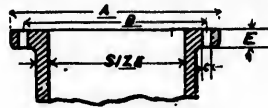
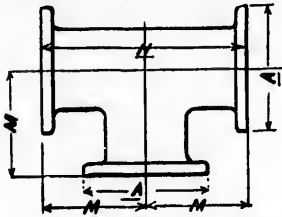
SIZE.	Tees.		Crosses.		Elbows.			Reducers.		Drip Pots.							Bell End.					
	L	M	L	M	L	M	R	M	K	L	M	N	O	P	Q	A	B	C	D	E	F	
3	''	''	''	''	''	''	''	''	''	''	''	''	''	''	''	''	''	''	''	''	''	
4	10	2 8	20	2 8						9½	2 7	2 0	1 9 1	3½	1 3 1½	8	1½	5½	4	1½		
6	12	3 0 2	0 3 0							9½	2 7	2 0	1 9 1	3½	1 3 1½	8	1½	7¼	4	1½		
8	13½	2 11 2	3½ 2 11							9½	2 7	2 1	1 9 1	3½	1 3 1½	8	1 9-16	10	4	1½		
9	14½	3 0 2	4½ 3 0							10	2 6	2 3½	1 9 1	4½	1 4 1½	8	1 9-16	11½	4	1½		
10	15	3 12 6	3 1							11	2 6	2 5½	1 9 1	6	1 5 1½	13-16	1½	12¾	4	1½		
12	16	3 3 2	8 3 3					12 to 4	4 4	12	2 5½	2 8	1 8 1	7½	1 6 1½	13-16	1½	14½	4	1½		
14	19	4 0 3	2 4 0							1	2 3 0	3 2	2 0 1	9	1 9 1½	1	1	16½	4½	1½		
16	21	5 0 3	6 5 0					16 to 12	3 6 1	5	3 6	3 6	2 5 2	0	2 0 1½	1	1½	19½	5	1½		
20	22	5 0 3	10 5 0																			
24	24	5 0 4	0 5 0																			
30	30	6 0 5	0 6 0																			
36	36	6 0 6	0 6 0																			

DIMENSIONS REFER BY LETTERS TO SKETCHES ABOVE.

CAST IRON FLANGED

Steam, Water and Gas Fittings.

Tees, Elbows, Bends, etc.; Cast Iron Suction and Rising Mains for Mine and Cornish Pumps; Pump Barrels for Acid Water.



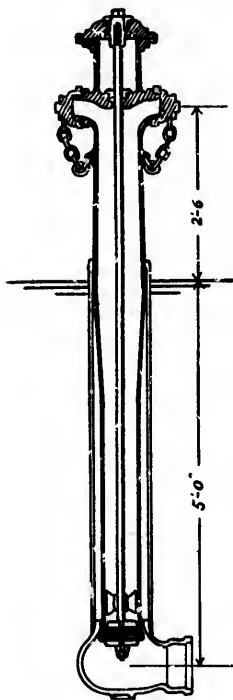
SIZE.	A	B	C	NUMBER OF BOLTS.	D	E	N	M	R
2	7	5½	5	4	½	¾	9	4½	
3	8	6½	5	4	½	¾	12	6	
4	9	7½	5	4	½	¾	14	7	
5	10	8½	5	6	½	¾	16	8	
6	11	9½	5	6	½	¾	18	9	
7	12	10½	5	6	½	¾	20	10	
8	14	12½	5	8	½	1	22	11	
9	15	13½	5	8	5/8	1½	24	12	
10	16	14½	5	8	5/8	1½	26	13	
12	18	16	5	10	¾	1¾	28	14	
14	21	18½	5	10	¾	1¾	30	15	
15	22	19½	5	12	¾	1¾	32	16	
16	23	20½	5	12	¾	1¾	36	18	
18	25	22½	1	14	7/8	1¾	38	19	
20	27	24½	1	16	7/8	1¾	42	21	
22	29	26½	1	18	7/8	1¾	46	23	
24	31	28½	1	18	7/8	1¾	48	24	

Hydraulic Piping and Valves up to 1600 lbs., with A. S. M. E. or Armstrong Joint.

Water Wheels, Turbines, and other Hydraulic Installations planned and executed.

HYDRANTS, VALVES, Valve Boxes & Water Gates.

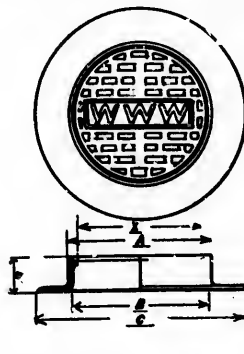
All Fittings guaranteed to fit, and Duplicate Parts kept in Stock to replace breakage at short notice.



STANDARD PATTERN.

Also made with three or four Nozzles as desired.

All Hydrants tested to 300 lbs. water pressure.



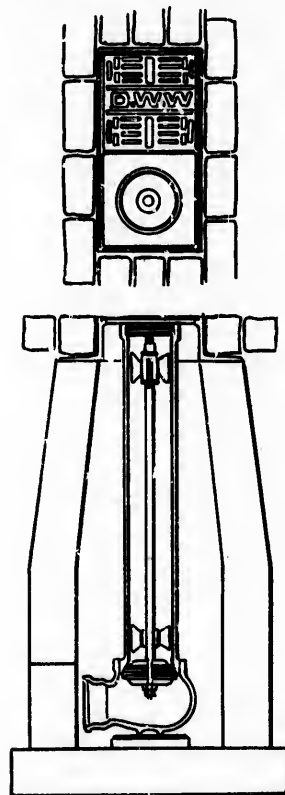
MAN HOLES

Made either Round, Square or Oblong.

STANDARD SIZES.

	X	A	B	C	D
20" Round.	20	24	22	36	7
20" Square.	20	24	22	36	7
30" Round.	30	34	32	45	7
20" x 35" Sewer.	20	24	22	36	8
	30	40	38	52	
16" Hydrant.	14½	17½	16	30	7

Sliding Gate Hydrants furnished on short notice. Also, Non-Freezing Hydrants of an improved pattern.

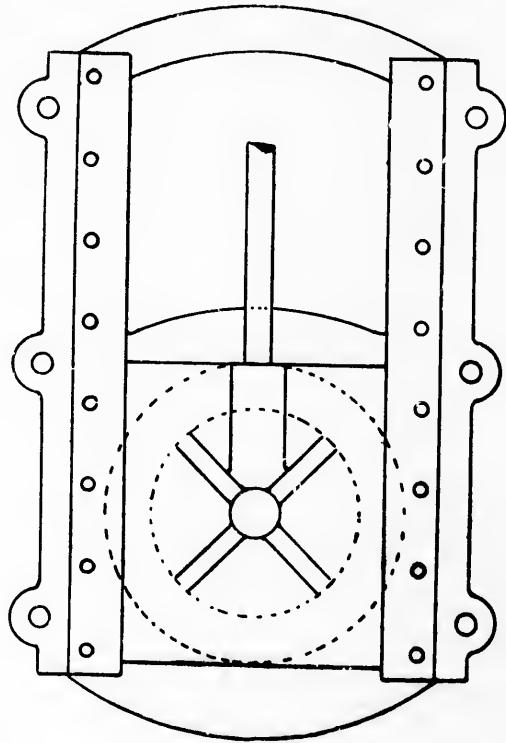
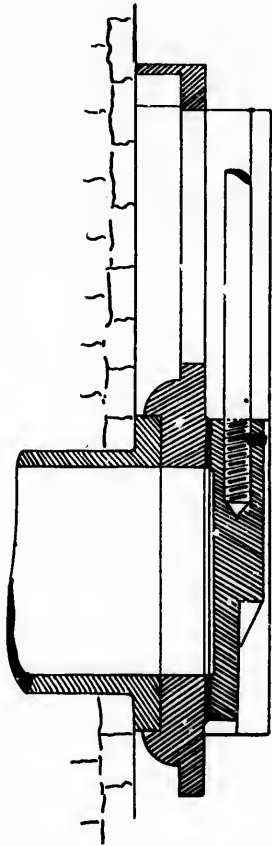


FLUSH PATTERN FOR CITIES.

When ordering, Templates of Screw Threads on Suction and Fire Hose should be sent.

SLUICE GATES.

THESE Sluice Gates are self-adjusting, having tapered Guide Channels. The Valve is released at the moment of raising by the screw and so does not grind on face of seat. These Gates are built for Water flowing in either direction.

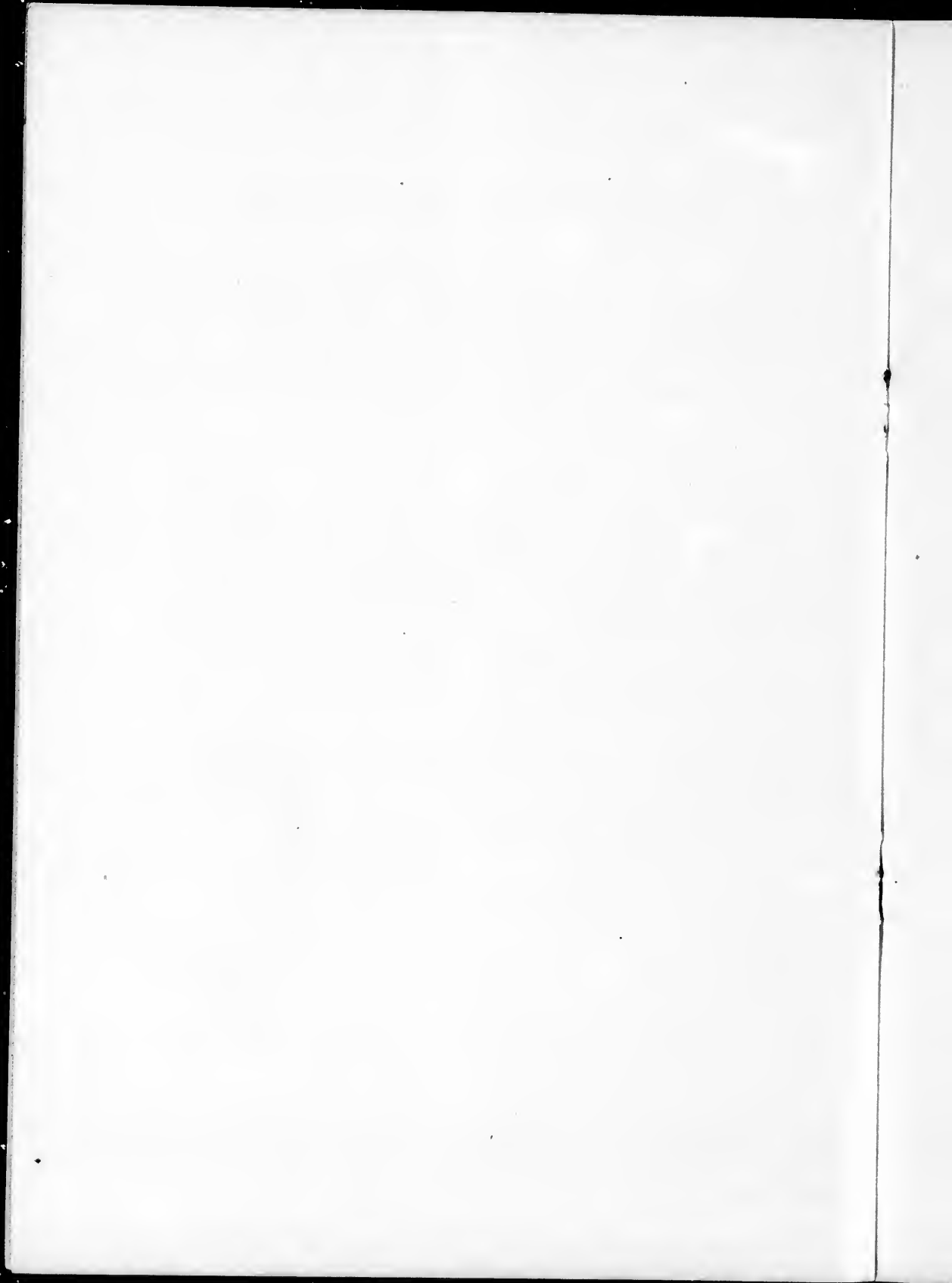


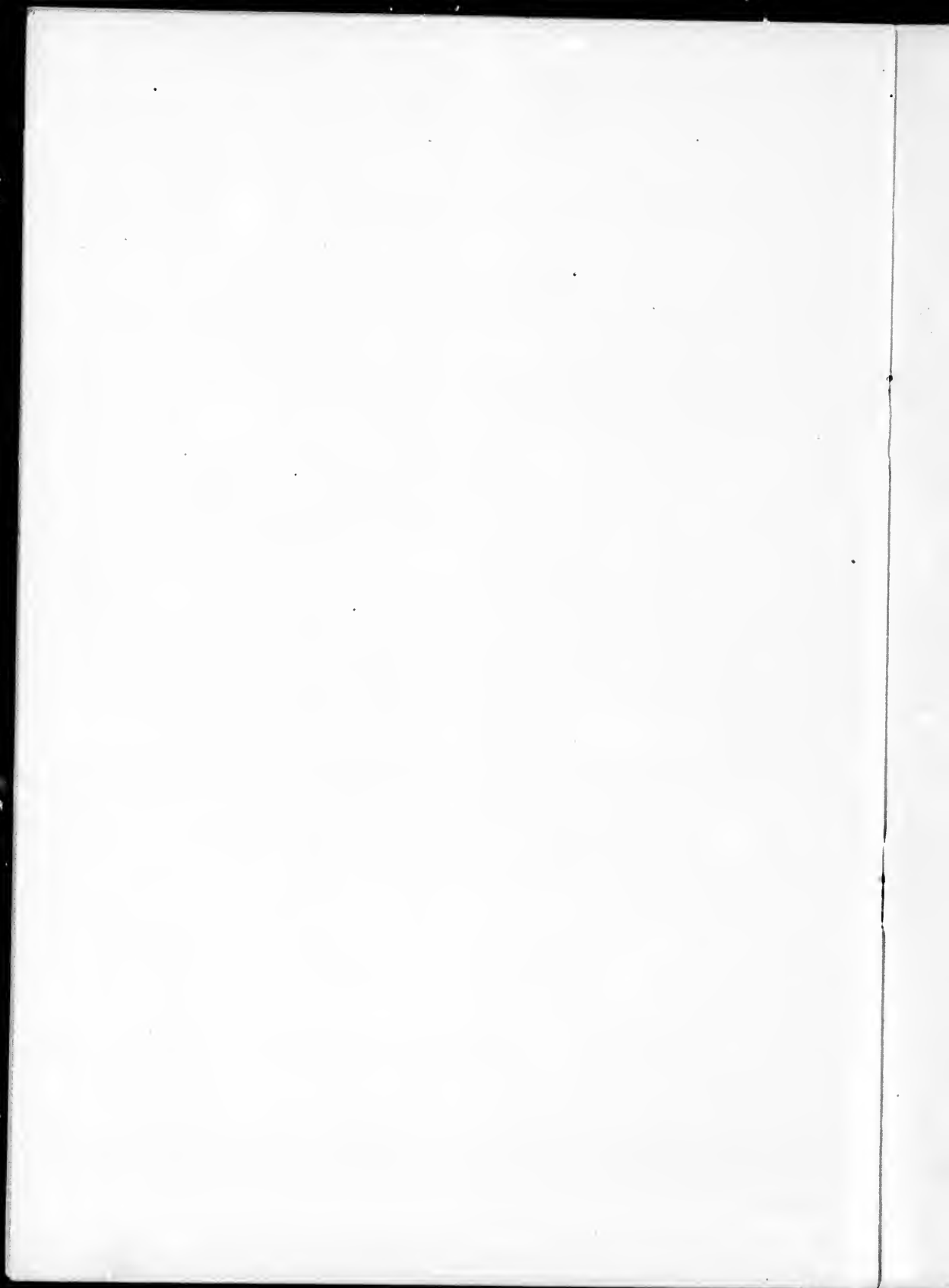
ide
by
are

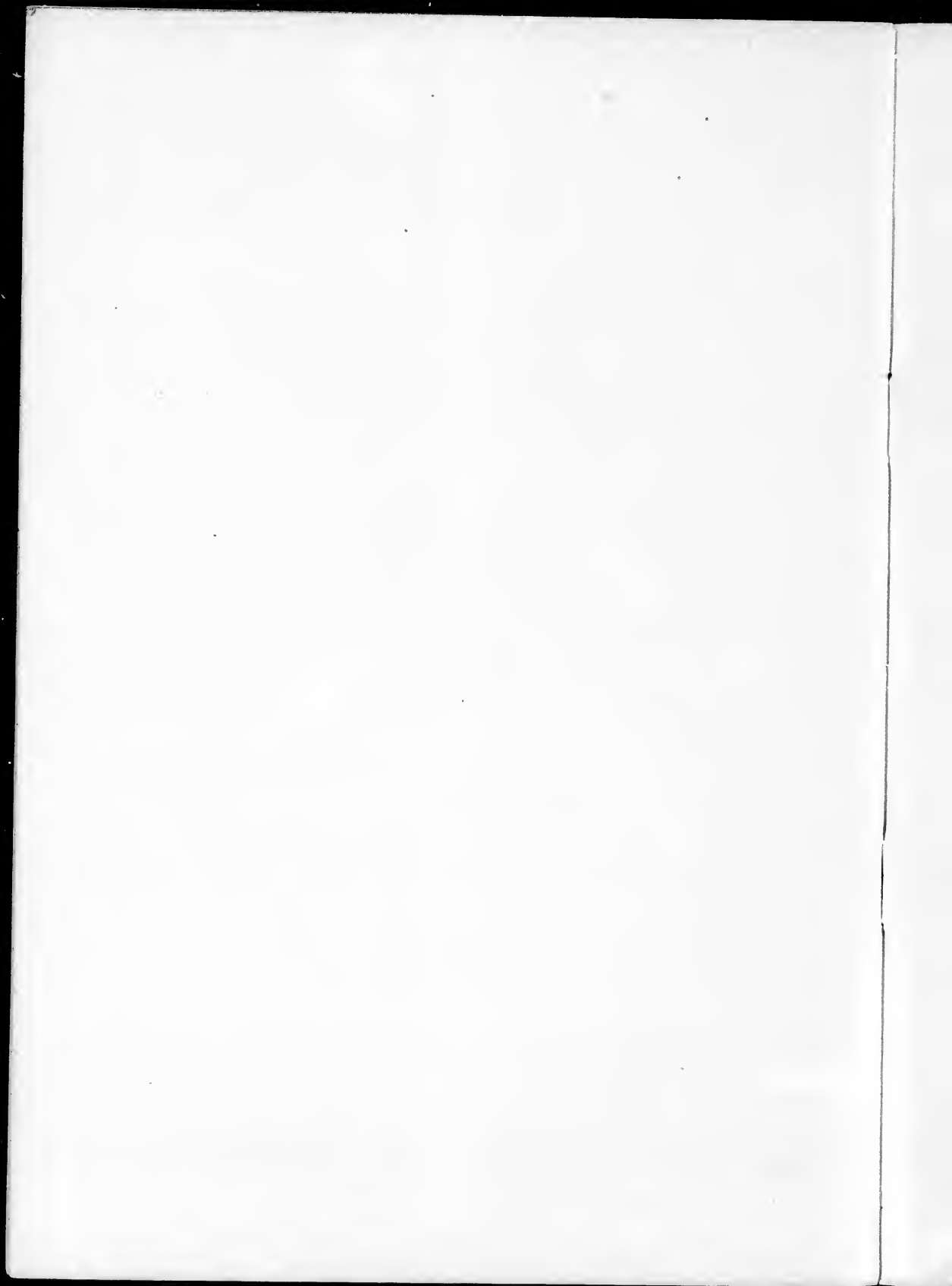
)

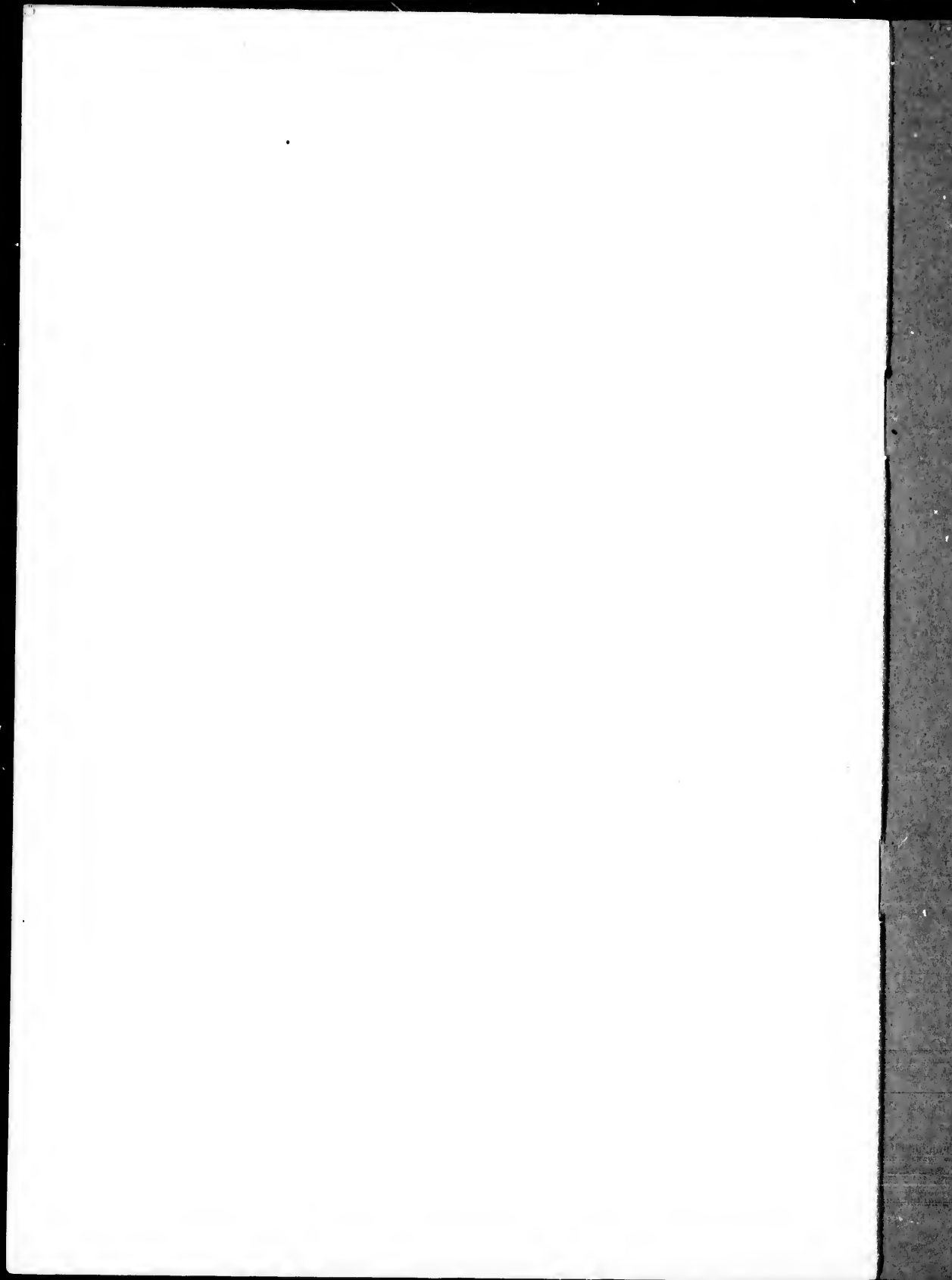
)

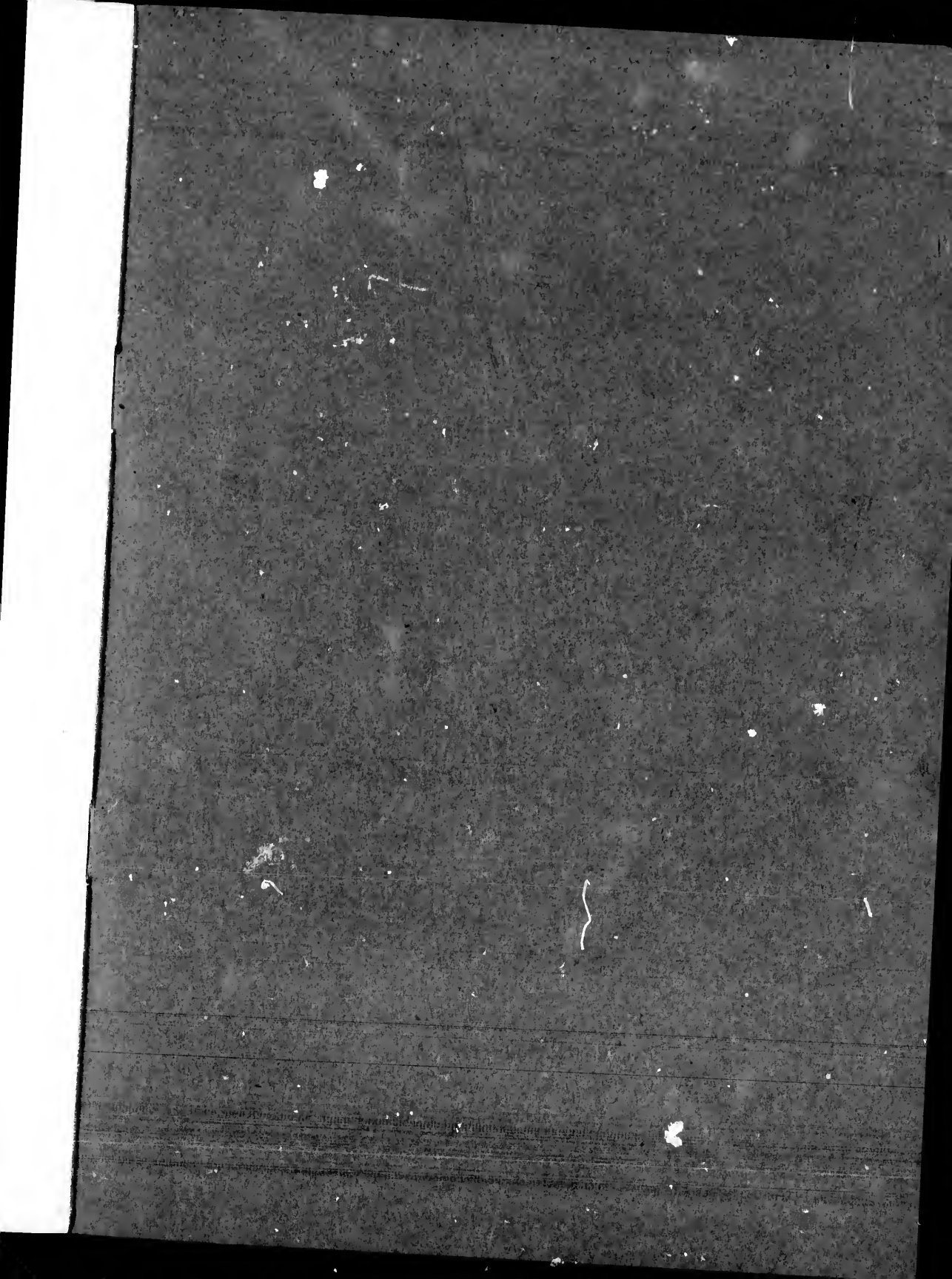
)











The Londonderry Iron Company, (Ltd).
LONDONDERRY, NOVA SCOTIA.

ESTABLISHED 1852.

The Largest and Most Complete Iron Works in Canada.

J. & A. McMILLAN, PRINTERS.

