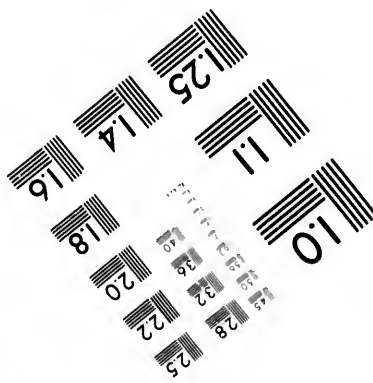
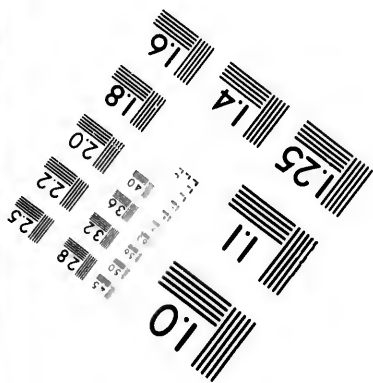
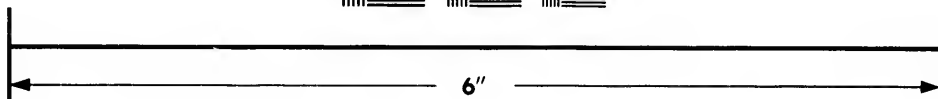
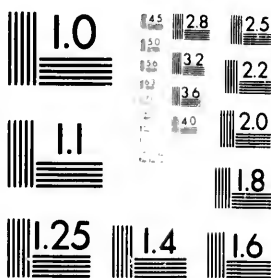


**IMAGE EVALUATION
TEST TARGET (MT-3)**



**Photographic
Sciences
Corporation**

23 WEST MAIN STREET
WEBSTER, N.Y. 14580
(716) 872-4503

2.5
2.8
3.2
2.2
2.0

**CIHM/ICMH
Microfiche
Series.**

**CIHM/ICMH
Collection de
microfiches.**

10



Canadian Institute for Historical Microreproductions

Institut canadien de microreproductions historiques

1980

Technical and Bibliographic Notes/Notes techniques et bibliographiques

The Institute has attempted to obtain the best original copy available for filming. Features of this copy which may be bibliographically unique, which may alter any of the images in the reproduction, or which may significantly change the usual method of filming, are checked below.

L'Institut a microfilmé le meilleur exemplaire qu'il lui a été possible de se procurer. Les détails de cet exemplaire qui sont peut-être uniques du point de vue bibliographique, qui peuvent modifier une image reproduite, ou qui peuvent exiger une modification dans la méthode normale de filmage sont indiqués ci-dessous.

- Coloured covers/
Couverture de couleur
- Covers damaged/
Couverture endommagée
- Covers restored and/or laminated/
Couverture restaurée et/ou pelliculée
- Cover title missing/
Le titre de couverture manque
- Coloured maps/
Cartes géographiques en couleur
- Coloured ink (i.e. other than blue or black)/
Encre de couleur (i.e. autre que bleue ou noire)
- Coloured plates and/or illustrations/
Planches et/ou illustrations en couleur
- Bound with other material/
Relié avec d'autres documents
- Tight binding may cause shadows or distortion
along interior margin/
La reliure serrée peut causer de l'ombre ou de la
distortion le long de la marge intérieure
- Blank leaves added during restoration may
appear within the text. Whenever possible, these
have been omitted from filming/
Il se peut que certaines pages blanches ajoutées
lors d'une restauration apparaissent dans le texte,
mais, lorsque cela était possible, ces pages n'ont
pas été filmées.
- Additional comments:/
Commentaires supplémentaires:

- Coloured pages/
Pages de couleur
- Pages damaged/
Pages endommagées
- Pages restored and/or laminated/
Pages restaurées et/ou pelliculées
- Pages discoloured, stained or foxed/
Pages décolorées, tachetées ou piquées
- Pages detached/
Pages détachées
- Showthrough/
Transparence
- Quality of print varies/
Qualité inégale de l'impression
- Includes supplementary material/
Comprend du matériel supplémentaire
- Only edition available/
Seule édition disponible
- Pages wholly or partially obscured by errata
slips, tissues, etc., have been refilmed to
ensure the best possible image/
Les pages totalement ou partiellement
obscurcies par un feuillet d'errata, une pelure,
etc., ont été filmées à nouveau de façon à
obtenir la meilleure image possible.

This item is filmed at the reduction ratio checked below/
Ce document est filmé au taux de réduction indiqué ci-dessous.

10X	12X	14X	16X	18X	20X	22X	24X	26X	28X	30X	32X
<input type="checkbox"/>	<input type="checkbox"/>	<input type="checkbox"/>	<input type="checkbox"/>	<input type="checkbox"/>	<input type="checkbox"/>	<input checked="" type="checkbox"/>	<input type="checkbox"/>	<input type="checkbox"/>	<input type="checkbox"/>	<input type="checkbox"/>	<input type="checkbox"/>

The copy filmed here has been reproduced thanks to the generosity of:
The Nova Scotia
Legislative Library

L'exemplaire filmé fut reproduit grâce à la générosité de:
The Nova Scotia
Legislative Library

The images appearing here are the best quality possible considering the condition and legibility of the original copy and in keeping with the filming contract specifications.

Les images suivantes ont été reproduites avec le plus grand soin, compte tenu de la condition et de la netteté de l'exemplaire filmé, et en conformité avec les conditions du contrat de filmage.

Original copies in printed paper covers are filmed beginning with the front cover and ending on the last page with a printed or illustrated impression, or the back cover when appropriate. All other original copies are filmed beginning on the first page with a printed or illustrated impression, and ending on the last page with a printed or illustrated impression.

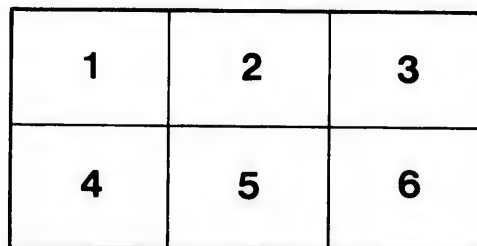
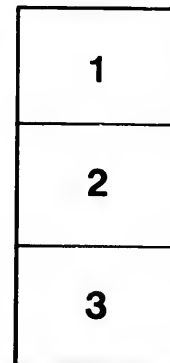
Les exemplaires originaux dont la couverture en papier est imprimée sont filmés en commençant par le premier plat et en terminant soit par la dernière page qui comporte une empreinte d'impression ou d'illustration, soit par le second plat, selon le cas. Tous les autres exemplaires originaux sont filmés en commençant par la première page qui comporte une empreinte d'impression ou d'illustration et en terminant par la dernière page qui comporte une telle empreinte.

The last recorded frame on each microfiche shall contain the symbol \rightarrow (meaning "CONTINUED"), or the symbol ∇ (meaning "END"), whichever applies.

Un des symboles suivants apparaîtra sur la dernière image de chaque microfiche, selon le cas: le symbole \rightarrow signifie "A SUIVRE", le symbole ∇ signifie "FIN".

Maps, plates, charts, etc., may be filmed at different reduction ratios. Those too large to be entirely included in one exposure are filmed beginning in the upper left hand corner, left to right and top to bottom, as many frames as required. The following diagrams illustrate the method:

Les cartes, planches, tableaux, etc., peuvent être filmés à des taux de réduction différents. Lorsque le document est trop grand pour être reproduit en un seul cliché, il est filmé à partir de l'angle supérieur gauche, de gauche à droite, et de haut en bas, en prenant le nombre d'images nécessaire. Les diagrammes suivants illustrent la méthode.



ails
du
odifier
une
nage

rata
elure,
à

NOVA SCOTIA
LEGISLATIVE LIBRARY



PROVINCE HOUSE

NOTES ON AN OCCURRENCE OF MANGANESE AND ZINC ORE IN NOVA SCOTIA.

BY E. GILPIN, JR., LL.D., F.G.S., F.R.S.C., &c.
(Deputy Commissioner and Inspector of Mines, Nova Scotia.)

Read before the Nova Scotia Mining Society, June meeting, 1893.

These brief notes are intended only to bring to the notice of the members of the Society an occurrence of manganese in a form which is, I think, new in this Province, and of an interesting specimen of zinc ore.

In the case of the former, samples of rock were brought to me from Whitehead, in Guysboro' County, which had excited the curiosity of the discoverer by the readiness with which pieces of it fused in an ordinary fire. This ready fusibility of certain rocks is not generally known, and is usually considered a mark of the presence of some valuable metal. In this case the metal was, for some reason unknown to me, considered to be zinc. The rock, a sample of which is submitted, is light brown and grey in color, weathering to a light drab. It is hard, brittle and subgranular in texture. The sample shows a folding in the shape of the letter S, and has crevices, apparently due to the folding, filled with crystalline matter slightly darker than the surrounding rock.

The samples, although resembling in a general way the rocks called felsites, had features of novelty about them, and I sent some to Mr. Leckie, manager of the Londonderry Iron Works, and the analyst of the company, Mr. Smaill, was kind enough to make a partial analysis of it. He reports that it contained:—

Silica	70.25
Alumina	15.25
Manganese oxide	9.25
Iron oxide	Small quantity.
Lime	"
Magnesia	"
Zinc	none.

The remainder being probably moisture, with some potash, soda, carbonic acid, etc.

Having disposed of the zinc theory, the presence of manganese became interesting. Presumably the manganese present is in the form of a bi-silicate of manganese, such as rhodonite, and that the greyish red or brown color of part of the sample may be due to the partial penetration of the rock by some carbonate of lime, manganese, etc. Dana, in his Mineralogy, does not give any analyses of the varieties of the silicates in any way resembling that under consideration. Allowing for the presence of a certain amount of free silica, as is usually the case in rocks of the class under considera-

NS
553.46
G
2

tion, the analyses given by him of orthoclase, present a parallelism with the exception of the absence of potash and the presence of manganese, the typical composition of this mineral being:—

Silica	64.60
Alumina	18.50
Potash	16.90

It would appear probable that the manganese has replaced nearly all the potash. The addition of moisture and free silica, and the replacement of part of the alumina and potash by the small quantities of iron, lime and magnesia would give a compound almost identical with that before you. All the analyses of orthoclase given on pages 356 to 361, of Dana's Mineralogy, have silica contents of from 64 to 75 per centum, and contain iron, magnesia, lime, soda, etc., in varying amounts up to about four per cent.

The same may be said of the possibility of the manganese having replaced the soda in an albite, the typical composition of which is:—

Silica	68.6
Alumina	19.6
Soda	11.8

In this case also the other foreign oxides would have replaced part of the soda and alumina.

It appears that feldspars are altered by the action of waters containing carbonic acid, or alkalis, or rendered acid by the decomposition of sulphurets. The completion of a course of decomposition of feldspar by the agency of water containing carbonic acid is the formation of a kaolin, or hydrous silicate of alumina; but there are many intervening steps modified by circumstances. Thus the presence of lime, iron, etc., leads to changes in composition, forming one or more links in the process. In the case before us it would appear that the mineral most convenient or most applicable has replaced the potash or soda, and marks an important change in the ultimate decomposition of the rock.

The following analyses given by Dana, of minerals resembling most closely in their silica and alumina contents the sample from Whitehead, may be of interest:—

	Silica.	Alumina.	Iron Ses. Oxide.	Magnesia.	Lime.	Soda.	Potash.	Water.
1. Albite	71.60	14.75	1.41	trace	1.06	10.06	.32
2. do	70.68	19.89	.1123	9.06
3. Sanadin	67.42	15.88	2.83	.15	2.77	.43	10.55
4. Microlin	66.9	17.8	.56	C.5	8.3
5. Felsite	71.17	13.6	1.40	.1	.4	3.19	3.5
6. Pumice	70.00	16.00	.50	2.50	6.50	3.0

Professor Lawson has kindly handed me an analysis of "Rhomboidal Feldspar" occurring near Rome, by Jameson. This is apparently a Lepidomelane with most of the iron replaced by manganese and lime.

4811

The following is a comparison of the two minerals :—

	Lepidomelane.	Rhombohedral Spar.
Silica.....	39.45	40.20
Alumina.....	9.27	9.00
Iron oxide.....	37.23	1.10
Manganese oxide.....	2.54	12.60
Lime.....	.31	20.80
Magnesia.....	3.29
Potash.....	5.06	12.00
Water.....	1.83

The analysis given by Dana, p. 238, of Gamsigradite, so named from the locality in Servia where it forms with white feldspar a rock termed timuzite, may be given in this connection. It is an aluminous iron manganese amphibole, and contains :—

Silica.....	46.58
Alumina.....	13.63
Iron.....	12.29
Manganese oxide.....	6.00
Magnesia.....	8.84
Lime.....	8.83
Soda.....	3.17
Potash.....	1.00

I do not know that manganese presented in the form of these samples is of commercial value, but its occurrence in connection with the gold-bearing strata is interesting. If the rock under consideration is to be viewed as a volcanic slag, and as having carried up its manganese contents from some unknown sources, there must be large amounts of this element contained in some silicates, and their decomposition may often prove to be the source of the deposits of manganese ores found in later rocks.

Since writing the above, I have noticed a reference showing the practical relationship of rocks containing manganese to deposits of the ores of that metal of economic value. Mr. Halse, in a paper read recently before the North of England Institute, describes some manganese deposits in one of the hills north-east of Arenig, consisting mainly of Upper Trappean rock, with a mass of feldspathic porphyry. He states, from a careful examination of the veins, that there is no evidence of their being fissure veins, the manganese merely locally filling the joints and certain superficial fissures in the country rock. It appears that the manganese has come from the feldspathic ash itself, and as a result of surface decomposition and erosion has been leached out from it and deposited in the joints and fissures.

It is to be regretted that analyses of the country rock were not given. The mode of occurrence of the ore described by Mr. Halse is that usually affected by manganese, and a good example may be seen near the Salmon River of Truro.

The other sample is a compound containing zincite, red oxide of zinc; Frankinite, an iron black compound of iron, manganese and zinc; and Willemite, a whitish silicious oxide of zinc.

This was found at Forrest Glen, on the line of the survey of the Stewiacke and Lansdowne railway, by Mr. T. Ritchie, civil engineer. The samples were submitted to Mr. Fletcher of the Geological Survey. He expressed a doubt as to the specimen being from any local deposit on account of its strong resemblance to the New Jersey ore. Mr. Ritchie, however, assured me that he had made full enquiry, and was satisfied that the sample had not been introduced, but was actually discovered. I give the occurrence as of interest on account of the rarity of zinc ore in the Province of Nova Scotia. It is found in small quantities in the gold bearing quartz veins, as traces in manganeseiferous ores, and occasionally in the carbonate ores of the coal measures.

In New Jersey, at both Franklin and Sterling, these three ores occur together, and in such quantity as to furnish an important ore of zinc. If, on further examination, the authenticity of the occurrence at Forrest Glen is confirmed, and the float traced to its source, an important addition may be made to the list of our mineral resources.



