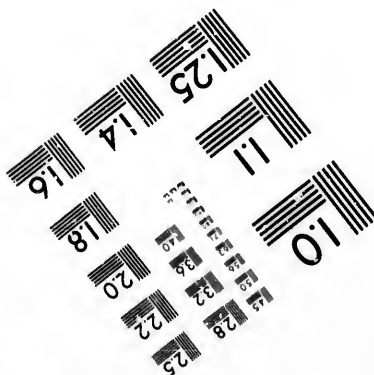
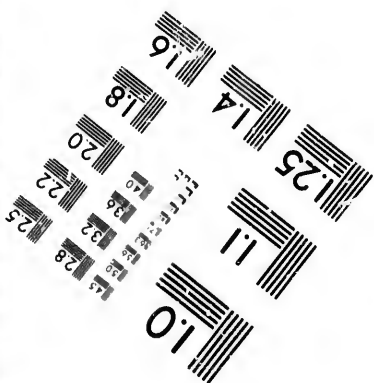
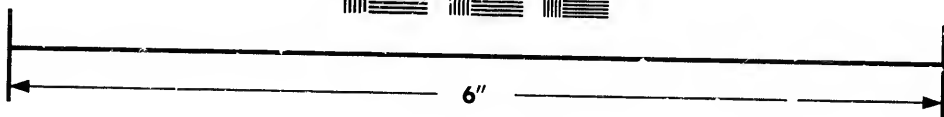
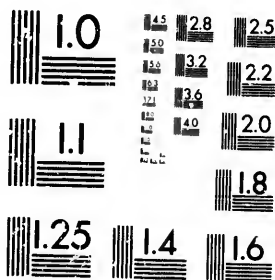


**IMAGE EVALUATION
TEST TARGET (MT-3)**



**Photographic
Sciences
Corporation**

23 WEST MAIN STREET
WEBSTER, N.Y. 14580
(716) 872-4503

15 28 25
32 22
36 20
18

**CIHM/ICMH
Microfiche
Series.**

**CIHM/ICMH
Collection de
microfiches.**



Canadian Institute for Historical Microreproductions / Institut canadien de microreproductions historiques

10

© 1981

The copy filmed here has been reproduced thanks to the generosity of:

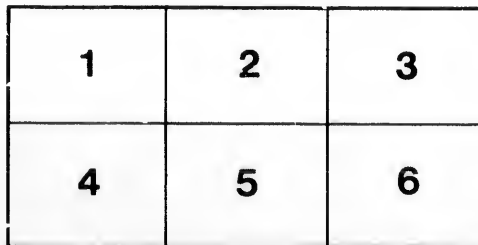
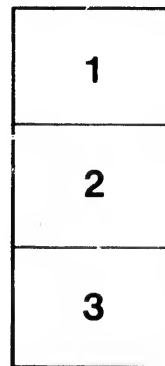
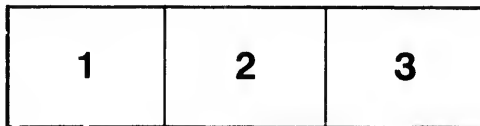
National Library of Canada

The images appearing here are the best quality possible considering the condition and legibility of the original copy and in keeping with the filming contract specifications.

Original copies in printed paper covers are filmed beginning with the front cover and ending on the last page with a printed or illustrated impression, or the back cover when appropriate. All other original copies are filmed beginning on the first page with a printed or illustrated impression, and ending on the last page with a printed or illustrated impression.

The last recorded frame on each microfiche shall contain the symbol \rightarrow (meaning "CONTINUED"), or the symbol ∇ (meaning "END"), whichever applies.

Maps, plates, charts, etc., may be filmed at different reduction ratios. Those too large to be entirely included in one exposure are filmed beginning in the upper left hand corner, left to right and top to bottom, as many frames as required. The following diagrams illustrate the method:



L'exemplaire filmé fut reproduit grâce à la générosité de:

Bibliothèque nationale du Canada

Les images suivantes ont été reproduites avec le plus grand soin, compte tenu de la condition et de la netteté de l'exemplaire filmé, et en conformité avec les conditions du contrat de filmage.

Les exemplaires originaux dont la couverture en papier est imprimée sont filmés en commençant par le premier plat et en terminant soit par la dernière page qui comporte une empreinte d'impression ou d'illustration, soit par le second plat, selon le cas. Tous les autres exemplaires originaux sont filmés en commençant par la première page qui comporte une empreinte d'impression ou d'illustration et en terminant par la dernière page qui comporte une telle empreinte.

Un des symboles suivants apparaîtra sur la dernière image de chaque microfiche, selon le cas: le symbole \rightarrow signifie "A SUIVRE", le symbole ∇ signifie "FIN".

Les cartes, planches, tableaux, etc., peuvent être filmés à des taux de réduction différents. Lorsque le document est trop grand pour être reproduit en un seul cliché, il est filmé à partir de l'angle supérieur gauche, de gauche à droite, et de haut en bas, en prenant le nombre d'images nécessaire. Les diagrammes suivants illustrent la méthode.

P 378 T
.M58 T

L A V A L U N I V E R S I T Y

M O N T R E A L B R A N C H

G E N E R A L I N S T R U C T I O N S

F O R T H E

G U I D A N C E O F A R C H I T E C T S

I N P R E P A R I N G

D E S I G N S F O R T H E I N T E N D E D B U I L D I N G S



3
2
Montreal

IMPRIMERIE GÉNÉRALE, 45, JACQUES-CARTIER SQUARE

1886

LE3

L277

U5

GENERAL INSTRUCTIONS
FOR THE
GUIDANCE OF ARCHITECTS
IN
PREPARING DESIGNS
FOR THE
BUILDING OF THE LAVAL UNIVERSITY BRANCH
MONTREAL

The Quebec Seminary purposes constructing in Montreal the necessary buildings for the Laval University Branch.

* As there is question of an important building, the Seminary has decided to call for a competition of architects from Canada and the United States for the preparation of plans.

To this end, the Quebec Seminary has secured the services of competent gentlemen who have kindly consented to prepare the articles of competition and report on the value of the plans submitted to them. The members of this Committee are Messrs.

Octave Audet, Chaplain of Sillery Convent, N. Bourassa, the well known artist of Montreal, and E. E. Taché, Assistant-Commissary of Crown Lands.

Three prizes of \$700, \$500 and \$300 are offered for the three best designs selected by the Committee after mature examination ; but no one architect will receive two prizes. These three plans will become the property of the Quebec Seminary and the other plans will be handed back to their owners.

The Seminary do not bind itself to execute any of these plans, and it will give the direction of the work to the successful architect, provided the latter furnishes all required guarantees and qualifications and consents an agreement with the business representative of the Seminary, in regard to bonus, salary and percentage.

As may be seen by the subjoined sketch, the ground on which the buildings are to be raised is situated on St. Denis street east, between Sherbrooke and Ontario streets. Berry street strikes the ground along the line KL and may serve as a private entrance. On Sherbrooke street, there is a plateau, almost level, with a front of 450 ft. by a depth of 250 ft. ; the remainder of the ground, 350 ft. front on St. Denis street, by 262 on Ontario street, is a steep slope toward Ontario street, and at the bottom it forms an almost horizontal plane, the level of which is lower than Ontario street. The difference of level between Sherbrooke and Ontario streets is of about 45 feet.

The sketch and the accompanying sections show that 10 soundings have been made indicating the depth of the soil and the line of rock. The hill is composed of four beds of soil. On the surface is a bed of black, yellow or mixed earth, varying from 10 to 18 ft ; next comes a bed of pure compact clay of from 19 to 32 ft. ; then another bed of compact clay filled with pebbles, which is from 2 to 21 ft. thick ; finally a bed of sand of 1 or 1½ ft. covers the rock. Water made its way into every sounding though they were made in january, during very cold weather.

The chief front will be on Sherbrooke street, but the St. Denis street front will require particular attention. The building in its entirety will be seen from afar chiefly from the south and south-east, and from the east on the river.

The competitors are not to be bound to follow any special style of architecture, but the gothic is excluded. Architects must however avoid extreme and superfluous ornamentation. Appropriate proportions with solidity of design and suitable and substantial architecture will be preferred.

The general exterior plan of the university shall have to give way to the exigencies of the interior apartments, and taste and picturesque designs shall have to be taken into consideration only in so far as they contribute to a useful end in the construction.

There will be four principal departments: the administrative, the law faculty, the faculty of arts and the faculty of medicine. These three faculties shall have to be connected with the administrative and radiate around it as much as possible. The apartments of each faculty shall have to be grouped together, and of easy access to the students of the respective faculties.

It is not necessary that the general construction be confined to one block. There may be two blocks, one of which will contain the administrative department with the faculties of law and arts, and the other, the faculty of medicine.

There may be also three blocks; the first containing the administrative, the second the faculty of law and arts, the third, the faculty of medicine.

There might even be a special construction capable of being lengthened indefinitely for the library, provided it be of easy access to the different departments.

In all cases the administrative department must be in the principal block which will be situate on Sherbrooke street.

The principal entrance will be on Sherbrooke street; but

there will be required a special entrance for the students of each faculty. The Berri street entrance will be used specially for provisions.

The Convocation Hall, the Chapel and the Library must be of easy access to the public and for that reason should be, as much as possible, on the lower floors.

All the parts of the building will have to be perfectly lighted, principally the lecture rooms, the museums, the laboratories and other rooms devoted to teaching.

The whole edifice will be built of Montreal stone with brick backing. The frame work of the roof and beams must be of iron, and the stairs must be of iron or stone or both. The interior walls and partitions will be of incombustible materials. The apartments of the cellar must be vaulted, at least those containing the furnaces, coal and firewood, etc., etc. The corridors, entrances, lecture-rooms, laboratories, museums and library shall have tile flooring.

The heating will be done by the hot water system.

The foundations will be laid on the rock by pillars of masonry or concrete or by piles.

The following drawings will be required :

Plans of the foundations.

Plans of the cellars and other stories.

Plans of the roofs.

Front, side and rear elevation.

Transverse and longitudinal sections for each block.

Plans of the work and embellishments to be made on the ground suitable to the buildings.

The plans shall clearly set forth the dimensions of the several materials composing the floors and shall fully exhibit the several sizes of the hot water supply, water and gas pipes ; and the sizes

of the several rooms and the thickness of the walls shall be clearly set forth in figures.

Each set of drawings shall be accompanied by a general specification describing the designs and interior arrangements and giving itemized estimates of the quantities and cost.

The scale for the drawings shall be $\frac{1}{2}$ of an inch to the foot.

The drawings will be plain, neither glazed, nor varnished. They must be geometrical line drawings without shadowing or coloring, except for the windows, for the sections and for the plans of the various floors where color shall be used to designate the materials.

No architect shall sign his plans ; but each design with the annexed specifications and estimates will be marked by a motto or cipher. A sealed envelope bearing the same motto or cipher and containing, besides the name and address of the competitor, the fees, salary or percentage he will charge or expect, should his plans be adopted, will be deposited with his drawings and opened only in case a prize is awarded for the designs bearing the same motto or cipher.

The drawings of competitors must be deposited free of charge at the Quebec Seminary addressed to the Right Reverend Superior and properly boxed without indicating, in any way, the name or residence of the competitor.

No architect will be allowed to show his plans or divulge his motto to any one before the award has been made.

The amount allowed for the whole building, inclusive of the heating system, water and gas supply for the laboratories and corresponding amphitheatres, electric light and drainage shall not exceed six hundred thousand dollars (\$600,000.)

The following is the list of halls and rooms necessary for each department, with the superficies of each or the number of persons that each may contain. This list is only approximate for super-

ficies. All modern improvements must be employed and sufficient space will have to be reserved for passages, lobbies, stairways, etc., whether the fact is mentioned or not.

LIST

ADMINISTRATIVE DEPARTMENT.

Square Feet

1200—Chief lobby at the principal entrance opening on the stairway.

200—Two porters' lodges.

1200—Vice-Rector's rooms opening on the main lobby, three apartments of 600, 400 and 200 ft, with bath room and water-closet.

520—Vice-Rector's Office (400) with safety vault (120), adjoining the Secretary's office and communicating directly by stairway or otherwise, with the Vice-Rector's rooms.

900—Secretary's rooms, office, sitting room, bed chamber, bath room, water closet and safety vault (120).

N. B.—The Vice-Rector's and Secretary's offices must stand outside of the main lobby and must be easily accessible to students from the outside and inside, and opening on a passage of sufficient width.

3000—Grand reception room communicating with the Vice-Rector's apartments, 3000, with three ante-chambers, 400 × 3.

Square feet.

4000—Ten double rooms for professors 400×10 .
Two bath rooms and water-closets.

400—Private dining-room.

1000—Another dining-room opening into the first.

1750—Recreation hall opening on a smoking room (750) and a gallery.

Convocation hall that will easily accommodate 1200 people outside of the platform and the space reserved for the students, and opening on the main lobby as far as practicable, with two waiting-rooms (750×2), ventilation and acoustics to be specially attended to.

A special space shall be reserved to contain 500 students and communicating directly with the platform.

Chapel of same dimensions as Convocation Hall, easily communicating therewith, and sacristies.

Public Hall for lectures on an incline plane, for 500 persons.

2700—Three halls for meetings of societies, etc., $1000 + 900 + 800$.

2100—Warden's lodgings with family, porters, 10 rooms.

1200—Kitchen and dependencies, bath rooms and w. c.

Tall and broad cellars, wherein vehicles can penetrate, for furnaces, coals, wood, etc.

Broad and well-lighted stairs, chiefly the central stairway.
Elevator.

LAW FACULTY.

Auditorium for 150 seats and desks.

Two smaller auditoriums for 75 seats and desks.

Square feet.

- 1500—Two halls for meetings, examination, etc., 750×2 .
1000—Two waiting rooms for professors with w. c.
300—Apparitor's room.
2500—Waiting rooms for students
600—Reading room adjoining the waiting room.
1200—Cloakroom communicating as closely as possible with
the auditoriums, waiting room and lobby.
600—Private library, reading room.
300—Water-closets and urinals.

FACULTY OF ARTS.

- 2500—Waiting room for students, 2000. Cloakroom, 500.
600—Reading room adjoining the waiting room.
300—Apparitor's room.
Two amphitheatres for science, very high, lighted from
the left or from above, the first for 150 students, and
the second for 100 students.
6400—Four special auditoriums, 2000×2 , 1200×2 .
1200—General Chemical Laboratory, for professors, near the
amphitheatres.
1600—Laboratory for chemical studies, 4 isolated rooms, 400×4 .
3000—Chemical Laboratory for students with chimneys.
1800—Two smaller Laboratories $1200 + 600$.
2600—Laboratory for physics, 4 rooms, 1200, 600, 500, 300.
1500—Mineralogical Laboratory, 2 rooms, $1000 + 500$.
1500—Zoological Laboratory, 2 rooms, $1000 + 500$.
750—Botanical Laboratory.

Square feet.

- 400—Shop adjoining the laboratories.
- 500—Large store-room, vault shape, for the laboratories of art and medicine.
- 7500—Mineralogical, geological, zoological, physical and mechanical museums so constructed as to be enlarged indefinitely.
- 3000—Museums of painting and sculpture susceptible of enlargement, lighted to that purpose.
- 6200—The halls for drawing, 3000, 2000, 1200.
- 5000—Two auditoriums for literary entertainments, 3000 + 2000.
- 2400—Two smaller auditoriums.
- 700—Two waiting rooms for professors, with water-closet 400 + 300.

LIBRARY

The library must be easily accessible to the administrative department and the three faculties, as also to the public. It must contain for the present 50,000 volumes and be susceptible of indefinite enlargement.

- 2400—Reading rooms 2000 + 400.
- 600—Spare room.
- 400—Librarian's office, water-closet.

FACULTY OF MEDECINE.

- Amphitheatre on sharp incline for 225 student, near the chemical laboratory.
- Amphitheatre on gentle incline for 150 students.
- Two auditoriums for 100 and for 75 students.

Square feet.

3000—Waiting room for students communicating easily with the auditoriums and amphitheatres.

800—Reading room adjoining the waiting room.

2000—Three waiting rooms for professors with water-closet.

2400—Two cloakrooms for students in the neighbourhood of the the waiting room and communicating with the lobbies and auditoriums as far as possible.

4000—Grand dissecting room, under the roof, with light from above.

Amphitheatre on sharp incline for 200 students, communicating with dissecting room. Light from above and on the left.

1425—Adjoining these two apartments a) room for the preparation and conservation of subjects with elevator reaching up to this hall (625) b) room for demonstration of anatomy (400) c) two work rooms for professors (400).

3600—Histological laboratory, in the form of an amphitheatre with light from the left and in front (3000); room for professor (400) and room for instruments (200).

900—Physiological laboratory.

900—Bacteriological laboratory.

900—Physico-medical laboratory.

900—Laboratory of pharmacology and materia medica.

6800—Laboratories for medical chemistry, 4800 + 2000.

N. B.—These laboratories, as well as those of the faculty of arts, must be supplied with numerous chimneys and well ventilated; connected as far as possible with those of the faculty of arts, and fed from the same general store room.

Square feet.

5000—Museums of pathology, hygiene, surgery, anthropology, human and comparative anatomy, all susceptible of indefinite enlargement.

600—Pharmacy.

300—Apparitor's rooms.

1500—Caretaker's lodgings, 5 rooms.

500—Water-closets and urinals.

NOTICE.—Architects need not take with account the buildings that stand on the grounds.

If any *important* information is sought for by an architect, it will be communicated, through the Committee, to all the other architects who may ask for a programme.

REV. M. E. METHOT,

*Superior of the Seminary of Quebec,
Rector of Laval University.*

SEMINARY OF QUEBEC,

QUEBEC, 1st OCTOBER 1886.

