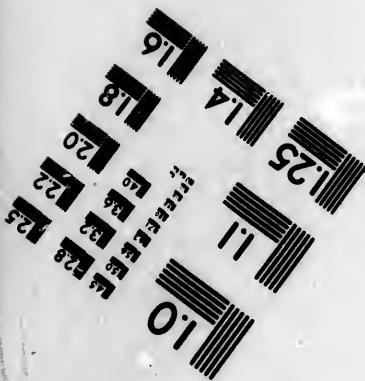
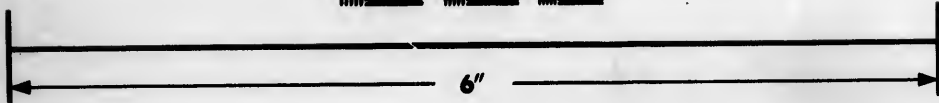
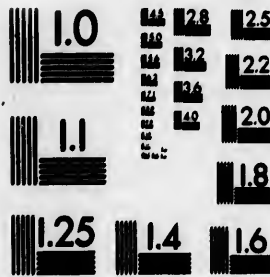


**IMAGE EVALUATION
TEST TARGET (MT-3)**



**Photographic
Sciences
Corporation**

23 WEST MAIN STREET
WEBSTER, N.Y. 14580
(716) 872-4503

**CIHM/ICMH
Microfiche
Series.**

**CIHM/ICMH
Collection de
microfiches.**



Canadian Institute for Historical Microreproductions / Institut canadien de microreproductions historiques

© 1984

Technical and Bibliographic Notes/Notes techniques et bibliographiques

The Institute has attempted to obtain the best original copy available for filming. Features of this copy which may be bibliographically unique, which may alter any of the images in the reproduction, or which may significantly change the usual method of filming, are checked below.

L'Institut a microfilmé le meilleur exemplaire qu'il lui a été possible de se procurer. Les détails de cet exemplaire qui sont peut-être uniques du point de vue bibliographique, qui peuvent modifier une image reproduite, ou qui peuvent exiger une modification dans la méthode normale de filmage sont indiqués ci-dessous.

- Coloured covers/
Couverture de couleur
- Covers damaged/
Couverture endommagée
- Covers restored and/or laminated/
Couverture restaurée et/ou pelliculée
- Cover title missing/
Le titre de couverture manque
- Coloured maps/
Cartes géographiques en couleur
- Coloured ink (i.e. other than blue or black)/
Encre de couleur (i.e. autre que bleue ou noire)
- Coloured plates and/or illustrations/
Planches et/ou illustrations en couleur
- Bound with other material/
Relié avec d'autres documents
- Tight binding may cause shadows or distortion
along interior margin/
La reliure serrée peut causer de l'ombre ou de la
distortion le long de la marge intérieure
- Blank leaves added during restoration may
appear within the text. Whenever possible, these
have been omitted from filming/
Il se peut que certaines pages blanches ajoutées
lors d'une restauration apparaissent dans le texte,
mais, lorsque cela était possible, ces pages n'ont
pas été filmées.
- Additional comments:/
Commentaires supplémentaires:

- Coloured pages/
Pages de couleur
- Pages damaged/
Pages endommagées
- Pages restored and/or laminated/
Pages restaurées et/ou pelliculées
- Pages discoloured, stained or foxed/
Pages décolorées, tachetées ou piquées
- Pages detached/
Pages détachées
- Showthrough/
Transparence
- Quality of print varies/
Qualité inégale de l'impression
- Includes supplementary material/
Comprend du matériel supplémentaire
- Only edition available/
Seule édition disponible
- Pages wholly or partially obscured by errata
slips, tissues, etc., have been refilmed to
ensure the best possible image/
Les pages totalement ou partiellement
obscurcies par un feuillet d'errata, une pelure,
etc., ont été filmées à nouveau de façon à
obtenir la meilleure image possible.

This item is filmed at the reduction ratio checked below/
Ce document est filmé au taux de réduction indiqué ci-dessous.

10X	12X	14X	16X	18X	20X	22X	24X	26X	28X	30X	32X
<input type="checkbox"/>	<input type="checkbox"/>	<input type="checkbox"/>	<input type="checkbox"/>	<input type="checkbox"/>	<input type="checkbox"/>	<input checked="" type="checkbox"/>	<input type="checkbox"/>	<input type="checkbox"/>	<input type="checkbox"/>	<input type="checkbox"/>	<input type="checkbox"/>

The copy filmed here has been reproduced thanks to the generosity of:

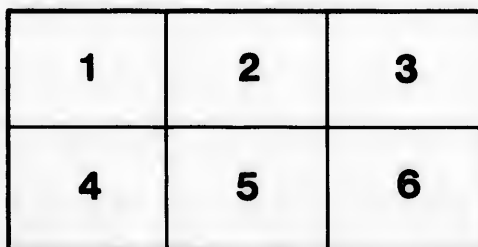
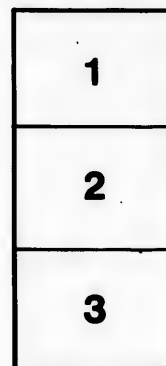
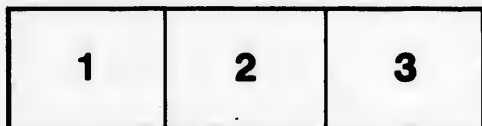
Douglas Library
Queen's University

The images appearing here are the best quality possible considering the condition and legibility of the original copy and in keeping with the filming contract specifications.

Original copies in printed paper covers are filmed beginning with the front cover and ending on the last page with a printed or illustrated impression, or the back cover when appropriate. All other original copies are filmed beginning on the first page with a printed or illustrated impression, and ending on the last page with a printed or illustrated impression.

The last recorded frame on each microfiche shall contain the symbol \rightarrow (meaning "CONTINUED"), or the symbol ∇ (meaning "END"), whichever applies.

Maps, plates, charts, etc., may be filmed at different reduction ratios. Those too large to be entirely included in one exposure are filmed beginning in the upper left hand corner, left to right and top to bottom, as many frames as required. The following diagrams illustrate the method:



L'exemplaire filmé fut reproduit grâce à la générosité de:

Douglas Library
Queen's University

Les images suivantes ont été reproduites avec le plus grand soin, compte tenu de la condition et de la netteté de l'exemplaire filmé, et en conformité avec les conditions du contrat de filmage.

Les exemplaires originaux dont la couverture en papier est imprimée sont filmés en commençant par le premier plat et en terminant soit par la dernière page qui comporte une empreinte d'impression ou d'illustration, soit par le second plat, selon le cas. Tous les autres exemplaires originaux sont filmés en commençant par la première page qui comporte une empreinte d'impression ou d'illustration et en terminant par la dernière page qui comporte une telle empreinte.

Un des symboles suivants apparaîtra sur la dernière image de chaque microfiche, selon le cas: le symbole \rightarrow signifie "A SUIVRE", le symbole ∇ signifie "FIN".

Les cartes, planches, tableaux, etc., peuvent être filmés à des taux de réduction différents. Lorsque le document est trop grand pour être reproduit en un seul cliché, il est filmé à partir de l'angle supérieur gauche, de gauche à droite, et de haut en bas, en prenant le nombre d'images nécessaire. Les diagrammes suivants illustrent la méthode.

COMMERCIAL BANK OF CANADA.

SPECIAL GENERAL MEETING OF SHAREHOLDERS.

By virtue of authority contained in the Act of Incorporation, 19th Victoria, cap. 120, the Directors of the Commercial Bank of Canada hereby call a Special General Meeting of the Shareholders, to be held at the Bank, in the City of Kingston, on WEDNESDAY, THE 20TH DAY OF NOVEMBER NEXT, at noon :

“For the purpose of taking into consideration the position of the Bank with respect to the suit against the Great Western Railway Company, and of adopting such measures as may be considered most advisable for the interests of the Bank when the result of the next trial shall have been ascertained.”

By order of the Board.

R. J. CARTWRIGHT,
President.

COMMERCIAL BANK OF CANADA, {
KINGSTON, 6th October, 1865. }

CIRCULAR.

TO THE SHAREHOLDERS OF THE COMMERCIAL BANK OF CANADA :

I beg to hand you copy of notice in Canada Gazette calling a Special General Meeting of the Shareholders, to discuss the Great Western Railway case after next trial.

The Directors desire to obtain the opinions of the Shareholders on the case generally, as well as to afford them all the information in their power relative thereto. Probably also, other matters, affecting the interests of the Shareholders, and growing out of the Great Western Railway debt, may be informally brought up; and upon these also, if discussed, it is desirable to have the views of the Shareholders.

The Directors trust that every Shareholder will attend the meeting, or if unable to attend, that he will empower some party (a Shareholder) to act on his behalf. To meet the case of those who cannot attend personally, a blank Power of Attorney to vote, in the usual form, is annexed hereto, which when duly executed, can be transmitted to the Bank, or handed in at any of the Branches.

The Directors will endeavor to secure the attendance of all the larger Shareholders in Canada, at the meeting. Many have already undertaken to be present.

By order of the Board.

C. S. ROSS,
Cashier and General Manager.

COMMERCIAL BANK OF CANADA, {
KINGSTON, 6th October, 1865. }

F5012
1865
C734

CONFIDENTIAL PAGE OF REPORT

CONFIDENTIAL - SECURITY INFORMATION

CONFIDENTIAL - SECURITY INFORMATION

CONFIDENTIAL - SECURITY INFORMATION

CONFIDENTIAL - SECURITY INFORMATION

CONFIDENTIAL - SECURITY INFORMATION

CONFIDENTIAL - SECURITY INFORMATION

CONFIDENTIAL - SECURITY INFORMATION

CONFIDENTIAL - SECURITY INFORMATION

CONFIDENTIAL - SECURITY INFORMATION

CONFIDENTIAL - SECURITY INFORMATION

Commercial Bank of Canada.

Know all Men by these Presents, that I,

of

do make, constitute, and appoint

of

my true and lawful Attorney for me and in my name, and on my behalf, to vote at all meetings of Shareholders of the Commercial Bank of Canada, for the purpose of electing Directors, or otherwise; and generally to do all lawful acts requisite for effecting the premises; hereby ratifying and confirming all that my said Attorney shall do therein by virtue hereof.

In Witness whereof, I have hereunto set my hand and seal, at

this day of in the year of our Lord
one thousand eight hundred and sixty-five.

Signed and Sealed in presence of

[L. S.]

