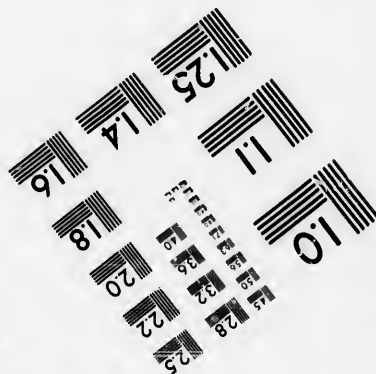
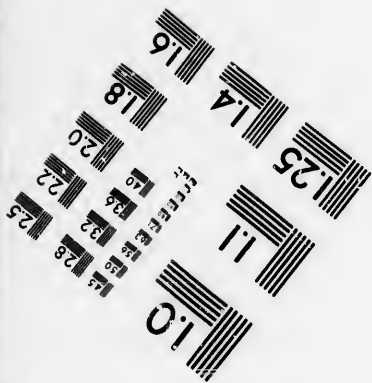
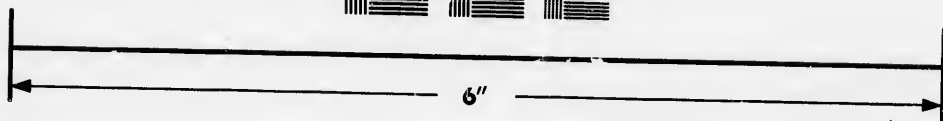
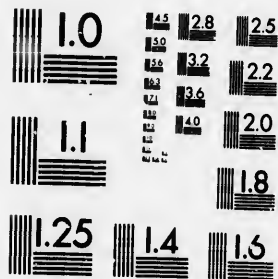


**IMAGE EVALUATION  
TEST TARGET (MT-3)**



**Photographic  
Sciences  
Corporation**

23 WEST MAIN STREET  
WEBSTER, N.Y. 14580  
(716) 872-4503

0  
11  
LE 28  
FE 32  
FS 35  
22  
20  
18  
6

**CIHM/ICMH  
Microfiche  
Series.**

**CIHM/ICMH  
Collection de  
microfiches.**



Canadian Institute for Historical Microreproductions / Institut canadien de microreproductions historiques

11  
01  
51

**© 1986**

Technical and Bibliographic Notes/Notes techniques et bibliographiques

The Institute has attempted to obtain the best original copy available for filming. Features of this copy which may be bibliographically unique, which may alter any of the images in the reproduction, or which may significantly change the usual method of filming, are checked below.

L'Institut a microfilmé le meilleur exemplaire qu'il lui a été possible de se procurer. Les détails de cet exemplaire qui sont peut-être uniques du point de vue bibliographique, qui peuvent modifier une image reproduite, ou qui peuvent exiger une modification dans la méthode normale de filmage sont indiqués ci-dessous.

- |  |   |
|--|---|
| <input type="checkbox"/> Coloured covers/<br>Couverture de couleur   | <input type="checkbox"/> Coloured pages/<br>Pages de couleur  |
| <input type="checkbox"/> Covers damaged/<br>Couverture endommagée  | <input checked="" type="checkbox"/> Pages damaged/<br>Pages endommagées   |
| <input type="checkbox"/> Covers restored and/or laminated/<br>Couverture restaurée et/ou pelliculée  | <input type="checkbox"/> Pages restored and/or laminated/<br>Pages restaurées et/ou pelliculées   |
| <input type="checkbox"/> Cover title missing/<br>Le titre de couverture manque   | <input checked="" type="checkbox"/> Pages discoloured, stained or foxed/<br>Pages décolorées, tachetées ou piquées  |
| <input type="checkbox"/> Coloured maps/<br>Cartes géographiques en couleur   | <input type="checkbox"/> Pages detached/<br>Pages détachées   |
| <input type="checkbox"/> Coloured ink (i.e. other than blue or black)/<br>Encre de couleur (i.e. autre que bleue ou noire)   | <input checked="" type="checkbox"/> Showthrough/<br>Transparence  |
| <input type="checkbox"/> Coloured plates and/or illustrations/<br>Planches et/ou illustrations en couleur  | <input type="checkbox"/> Quality of print varies/<br>Qualité inégale de l'impression  |
| <input type="checkbox"/> Bound with other material/<br>Relié avec d'autres documents   | <input type="checkbox"/> Includes supplementary material/<br>Comprend du matériel supplémentaire  |
| <input type="checkbox"/> Tight binding may cause shadows or distortion<br>along interior margin/<br>La reliure serrée peut causer de l'ombre ou de la<br>distorsion le long de la marge intérieure   | <input type="checkbox"/> Only edition available/<br>Seule édition disponible  |
| <input type="checkbox"/> Blank leaves added during restoration may<br>appear within the text. Whenever possible, these<br>have been omitted from filming/<br>Il se peut que certaines pages blanches ajoutées<br>lors d'une restauration apparaissent dans le texte,<br>mais, lorsque cela était possible, ces pages n'ont<br>pas été filmées. | <input type="checkbox"/> Pages wholly or partially obscured by errata<br>slips, tissues, etc., have been refilmed to<br>ensure the best possible image/<br>Les pages totalement ou partiellement<br>obscurcies par un feuillet d'errata, une pelure<br>etc., ont été filmées à nouveau de façon à<br>obtenir la meilleure image possible. |
| <input checked="" type="checkbox"/> Additional comments: /<br>Commentaires supplémentaires:  | [Printed ephemera] [4] p.   |

This item is filmed at the reduction ratio checked below/  
Ce document est filmé au taux de réduction indiqué ci-dessous.

10X	14X	18X	22X	26X	30X
<input type="checkbox"/>	<input type="checkbox"/>	<input type="checkbox"/>	<input type="checkbox"/>	<input checked="" type="checkbox"/>	<input type="checkbox"/>
12X	16X	20X	24X	28X	32X

The copy filmed here has been reproduced thanks to the generosity of:

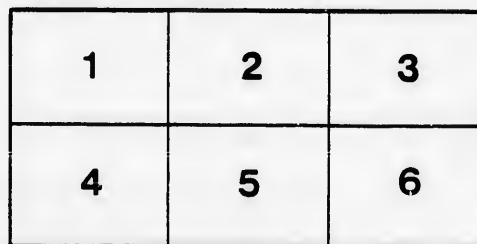
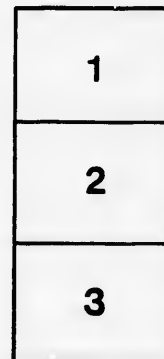
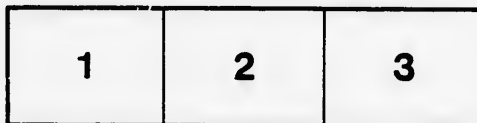
D. B. Weldon Library  
University of Western Ontario  
(Regional History Room)

The images appearing here are the best quality possible considering the condition and legibility of the original copy and in keeping with the filming contract specifications.

Original copies in printed paper covers are filmed beginning with the front cover and ending on the last page with a printed or illustrated impression, or the back cover when appropriate. All other original copies are filmed beginning on the first page with a printed or illustrated impression, and ending on the last page with a printed or illustrated impression.

The last recorded frame on each microfiche shall contain the symbol  $\rightarrow$  (meaning "CONTINUED"), or the symbol  $\nabla$  (meaning "END"), whichever applies.

Maps, plates, charts, etc., may be filmed at different reduction ratios. Those too large to be entirely included in one exposure are filmed beginning in the upper left hand corner, left to right and top to bottom, as many frames as required. The following diagrams illustrate the method:



L'exemplaire filmé fut reproduit grâce à la générosité de:

D. B. Weldon Library  
University of Western Ontario  
(Regional History Room)

Les images suivantes ont été reproduites avec le plus grand soin, compte tenu de la condition et de la netteté de l'exemplaire filmé, et en conformité avec les conditions du contrat de filmage.

Les exemplaires originaux dont la couverture en papier est imprimée sont filmés en commençant par le premier plat et en terminant soit par la dernière page qui comporte une empreinte d'impression ou d'illustration, soit par le second plat, selon le cas. Tous les autres exemplaires originaux sont filmés en commençant par la première page qui comporte une empreinte d'impression ou d'illustration et en terminant par la dernière page qui comporte une telle empreinte.

Un des symboles suivants apparaîtra sur la dernière image de chaque microfiche, selon le cas: le symbole  $\rightarrow$  signifie "A SUIVRE", le symbole  $\nabla$  signifie "FIN".

Les cartes, planches, tableaux, etc., peuvent être filmés à des taux de réduction différents. Lorsque le document est trop grand pour être reproduit en un seul cliché, il est filmé à partir de l'angle supérieur gauche, de gauche à droite, et de haut en bas, en prenant le nombre d'images nécessaire. Les diagrammes suivants illustrent la méthode.

LONDON PTD & LITHO CO

MICHIGAN, OHIO  
CANADIAN CIRCUIT

EIGHTEEN  
THEATRES

CLEVELAND, CINCINNATI, BUFFALO,  
DETROIT, TORONTO,  
TOLEDO, LONDON, HAMILTON,  
WOODSTOCK, SAGINAW,  
GRAND RAPIDS, BAY CITY AND  
JACKSON.



C. J. WHITNEY.  
LESSEE.

A. E. ROUTE.  
MANAGER

ONTARIO.



W. SMITH.

E. HOLLAND.

W. S. PARTIDGE.

**SMITH & BROS.**

THE  
LEADING  
SANITARY  
PLUMBERS  
AND  
HEATING  
ENGINEERS  
OF  
WESTERN  
ONTARIO.

376  
RICHMOND STREET,

LONDON.

OPPOSITE GRAND OPERA HOUSE BUILDING.

A full stock of Supplies always on hand.

TELEPHONE 588.

LADIES! THE ONLY WAY TO GET HELP IS THROUGH THE "FREE PRESS" WANT COLUMN.



**Parisian  
Steam  
Laundry**

73 & 75 DUNDAS STREET.

BRANCH OFFICES:

226 Dundas St. 752 Waterloo. 410 Hamilton Rd.  
280 " " 572 Pall Mall. 281 Wellington.  
310 " " 386 Richmond. 338 Rideau.  
435

J. K. SPRY, Manager.

**HUESTON'S**

**LIVERY,**

**Goupe & Gab Stables**

WELLINGTON STREET.

*Finest Horses and Carriages in the City.*

OPEN DAY AND NIGHT. TELEPHONE 441.

**ROBT. HUESTON,**

Proprietor.

**H. McKENNA,**

-FOR-

**Choice Cigars, Tobaccos**

AND PIPES.

ALWAYS OPEN .....

..... AFTER THE OPERA.

225 DUNDAS STREET.

**RIVARD**

The Leading Hatter  
and Furrier

HAS THE FINEST STOCK OF

**FURS**

IN THE CITY TO SELECT FROM.

HIS PRICES ARE RIGHT!

**Rivard**

London's Fashionable Hatter  
and Furrier,

400 RICHMOND-ST.

**WILLIAMS' Pianos**

CANADA'S  
FAVORITE

Cannot be excelled for touch, singing quality, delicacy and great power of tone, with highest excellence of workmanship.

ALL THE LATEST VOCAL AND INSTRUMENTAL

MUSIC RECEIVED AS PUBLISHED.

Musical Instruments of all kinds, Strings and Fittings  
AT LOWEST PRICES.

**R. S. WILLIAMS & SON,**

171 DUNDAS STREET,  
LONDON, ONT.

J. A. CRODEN, Manager.

*Frank Tucker*

**PROGRAMME**

Wednesday Night.

Dec 13/9

Man  
and  
Master.



(Programme continued on next page.)

SOMETHING NEW.

Opera English & Canadian  
Caramels. Chocolate Creams.

VERY FINEST Olives in Bulk

French Crystalized FRUITS. .. Fresh Roquefort Cheese

**FITZGERALD, SCANDRETT & CO.**  
189 Dundas Street.

ESTABLISHED 1831.

**H. DAVIS & SON,**  
**WATCHMAKERS**  
—AND—  
**JEWELLERS**

DEALERS IN

Watches, Clocks, Jewellery, Spectacles,  
Silver Plated Ware, &c.

170 DUNDAS ST., LONDON, ONT.

**W. T. STRONG**

Dispensing  
Chemist,

184 Dundas Street,  
LONDON, - ONTARIO.

**BROWN'S**

Central Shoe Store,

145 DUNDAS ST.



DON'T FAIL TO SEE... **Brown's Special Lines**

Ladies' Drawing-Room, Ball-Room,  
Boudoir, Theatrical, Calisthenic,  
Skating and Walking Shoes.  
Overgaiters, Moccasins & Leggings.

INSPECT BROWN'S SPECIALS IN  
Gents' Dress, Walking and Hockey Boots.  
Latest New York and Chicago Tips.

Newest Designs in Patent, Royal Tip, Oil Tan,  
Bluchers and Bals, with Scotch Welts,  
and the Celebrated Dowe's Felt Insole.

OVERSHOES, SPATS AND RUBBERS  
IN ENDLESS VARIETY.

A beautiful assortment of Fancy Slippers  
for Christmas and New Years.

See our Windows . . .  
Inspect our Goods . . .  
Ascertain our Prices

And we are sure you will be agreeably  
surprised.

**John S. Brown,**  
TELEPHONE 881.

IF YOU WANT THE BEST, TAKE THE "FREE PRESS." ALL THE NEWS!

IF YOU SEE IT IN THE "LONDON FREE PRESS," IT IS SO!

GO TO  
**SOUTHCOTT'S**

FOR YOUR  
**Overcoating**

OR  
**FALL & SUITING**

AND GET SATISFACTION AT  
CLOSE PRICES.  
**361 RICHMOND STREET.**

**GRAHAM BROS**

FOR  
**Fall and Winter Underclothing**  
ALL SIZES AND WEIGHTS.

CHEAPEST STOCK IN THE CITY.  
**159 DUNDAS STREET.**

**Wm. Stevely & Co.**

THE LEADING DEALERS IN  
**STOVES, RANGES,**

AND  
**HOUSE FURNISHING GOODS.**

OUR STOCK IS THE LARGEST.  
OUR PRICES THE LOWEST.  
**362 RICHMOND STREET.**  
PHONE 459.

-----

**The London Printing and Lithographing Co'y.**  
SUCCESSORS TO FREE PRESS PRINTING AND LITHO. DEPARTMENT.

OFFICE, "FREE PRESS" BUILDING. BEST WORK AT MODERATE PRICES.

-----

**TECUMSEH HOUSE**

LONDON.



Directly opposite G.T.R. depot; street railway past the doors; convenient to all the wholesale and retail business houses of city, making it the most desirable hotel in the city; elevator, and heated throughout with steam.

Porter in attendance on arrival of all trains.

**RATES, \$2.00 AND \$2.50 PER DAY,**

ACCORDING TO LOCATION.

No Extra Charge For Baggage.

**C. W. DAVIS, PROP.**

**«Programme Continued.»**

**THE PLAYERS.**

Chick.....	Gertie Claire
Florence Myrtle.....	Minnie Wilson
Mabel West.....	Ethel Tucker
O'Grady.....	C. W. Porter
Jerold Oak.....	C. P. Coast
Robert Myrtle.....	J. Knox Gavin
Stubb West.....	A. M. Hunt
Horace Myrtle.....	B. Richardson
Banty.....	B. W. Killman
Jim.....	Sam Porter
LARRY.....	FRANK TUCKER

**SYNOPSIS.**

ACT I.—The Mountain Home of the Wests. The murder. The clue.  
ACT II.—The Myrtle mansion. The accused.  
ACT III.—The Bay by the Myrtle mansion. The storm. Who's the coward now?  
ACT IV.—The prison across the lake. Bob and his sailor. Lay a finger on him and I'll blow your brains out.  
ACT V.—Home again. 'Tis false—'tis true, I swear it. Sheriff, do your duty. Happy denouement.

(Programme continued on last page.)

**McLEAN'S HARDWARE**

FOR  
**Bissell's Carpet Sweepers.**

WE CAN SHOW YOU TWELVE DIFFERENT STYLES SAME AS ARE NOW DISPLAYED BY THE BISSELL COMPANY AT THE WORLD'S FAIR.

CALL AND SEE THESE GOODS

AT  
**McLEAN'S HARDWARE,**  
151 Dundas Street.

**W. T. STRONG,**

Dispensing  
Chemist,  
**184 DUNDAS ST., LONDON, ONT.**

FOR  
**Fine Etchings....**

AND  
**Engravings**

TRY  
**O. B. GRAVES,**  
222 DUNDAS STREET.



**BRENER BROS**  
LONDON ONT.  
SOLD BY ALL FIRST-CLASS DEALERS.

LOOK OUT FOR THE "LONDON FREE PRESS" ON ALL EARLY MORNING TRAINS.

**GLOVES**  
— IN —  
SILK & KID  
— IF —  
18 to 30 Inch,  
IN ALL THE NEW SHADES.

TELEPHONE 611.

OPERA  
FANS

**EVENING GOODS**

*A. Rolfe*

OPERA  
HOUSE

We show the largest  
range of  
**S.I.L.K.S.**  
IN THE CITY.  
OUR  
NEW **Velour Cloth**  
IS THE LATEST.  
In all the New Tints,  
With Trimming to Match.  
**FINE DRESSMAKING.**

202 DUNDAS STREET.

**EDY BROS.**

The Artistic Photographers,

— RECEIVED —

**Three First Prizes**

— AND —

**DIPLOMA**

For Finest Display of Photography  
AT WESTERN FAIR, 1893.

Cabinet Photos, \$3 per doz.

**EDY BROS.**

214 DUNDAS STREET.

The **HUB**

Restaurant,

203 & 205 DUNDAS STREET.

For a NICE LUNCH after the  
Opera, go to the

**Hub Restaurant.**

Steaks, Chops, Chicken,  
Oysters, Etc.

OPEN TILL 12.00 P.M.

J. W. MARTIN, Prop.

(Late of the Martin House)

**«Programme Concluded.»**

During the evening, incidental to the performance, the CHALLENGE ORCHESTRA will render the following selections:—

MARCH—"Through the Waves,"..... Bennett  
WALTZ—"Ma Belle Adoree,"..... DeRoy  
OVERTURE—"Dawn till Twilight,"..... Bennett  
SELECTION—"Wang,"..... Morse  
DESCRIPTIVE—"The Chanticleers,"..... Hartman

The Furniture used on stage is supplied by JOHN FERGOUSON & SON,  
Furniture Manufacturers.

**NEXT + ATTRACTION**

To-morrow Night.

**A False Marriage**

**GRAND FAMILY MATINEE**

— SATURDAY —

Adults, 20c.; Children 10c.; to any part of  
the House.

COMING:

**Sol. Smith Russell.**

**A FINE PERFORMANCE**

is a satisfactory return  
for your money, but when  
you can get from us a  
superior quality of Coal  
or Wool at the same price  
you would pay for an inferior  
quality, it is even  
more satisfactory. When  
in need of "warmth," try  
us.

**CAMERON'S**

421 RICHMOND STREET,  
and BURWELL STREET at G. T. R.

WE call the attention of our business men to the  
PROGRAM as an advertising medium. It reaches  
the class of people whose trade you want, and the  
way to get that trade is to make yourself known.

**BELTON & ROOTE,**

BILL POSTING,

DISTRIBUTING

...AND...

**GENERAL ADVERTISING AGENTS**

Control all the Bill Boards and Dead Walls throughout  
the City. Population of City, 40,000.

All orders for Bill Posting, Distributing, Card  
Tacking, and General Advertising for  
Western Ontario will receive  
prompt attention.

OFFICE: BOX OFFICE, OPERA HOUSE.

**Roses, Carnations,**

**Palms,**

**Ferns, Bulbs,**

**J. GAMMAGE & SONS,**

213 Dundas Street.

**INDIAN... TEA IMPORTING HOUSE.**  
CEYLON

NEW BLENDS, DELICIOUS AND ECONOMICAL, AT MODERATE PRICES.

"English Breakfast," "Five o'clock Tea," & "Club House" Blends.  
60c. 50c. 45c.

These Blends are standard selections of choice Teas. Highly recommended to  
families for their fine quality and economical properties.

**S. FUGE,**

— IMPORTER OF —  
**CHOICE TEAS** 436 Richmond St.  
TELEPHONE 858. LONDON.

Box 1 Regional Secretary



