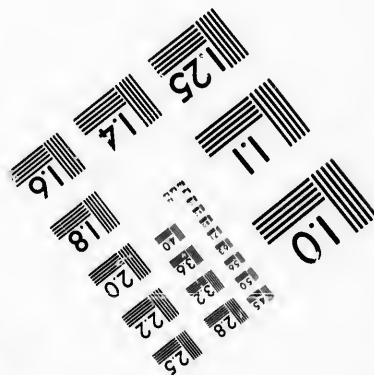
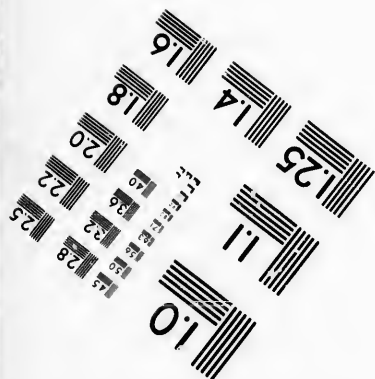
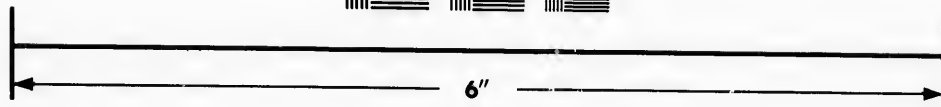
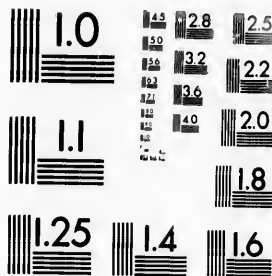


**IMAGE EVALUATION
TEST TARGET (MT-3)**



**Photographic
Sciences
Corporation**

23 WEST MAIN STREET
WEBSTER, N.Y. 14580
(716) 872-4503



**CIHM/ICMH
Microfiche
Series.**

**CIHM/ICMH
Collection de
microfiches.**



Canadian Institute for Historical Microreproductions / Institut canadien de microreproductions historiques



© 1987

Technical and Bibliographic Notes/Notes techniques et bibliographiques

The Institute has attempted to obtain the best original copy available for filming. Features of this copy which may be bibliographically unique, which may alter any of the images in the reproduction, or which may significantly change the usual method of filming, are checked below.

L'Institut a microfilmé le meilleur exemplaire qu'il lui a été possible de se procurer. Les détails de cet exemplaire qui sont peut-être uniques du point de vue bibliographique, qui peuvent modifier une image reproduite, ou qui peuvent exiger une modification dans la méthode normale de filmage sont indiqués ci-dessous.

- Coloured covers/
Couverture de couleur
- Covers damaged/
Couverture endommagée
- Covers restored and/or laminated/
Couverture restaurée et/ou pelliculée
- Cover title missing/
Le titre de couverture manque
- Coloured maps/
Cartes géographiques en couleur
- Coloured ink (i.e. other than blue or black)/
Encre de couleur (i.e. autre que bleue ou noire)
- Coloured plates and/or illustrations/
Planches et/ou illustrations en couleur
- Bound with other material/
Relié avec d'autres documents
- Tight binding may cause shadows or distortion along interior margin/
La reliure serrée peut causer de l'ombre ou de la distorsion le long de la marge intérieure
- Blank leaves added during restoration may appear within the text. Whenever possible, these have been omitted from filming/
Il se peut que certaines pages blanches ajoutées lors d'une restauration apparaissent dans le texte, mais, lorsque cela était possible, ces pages n'ont pas été filmées.
- Additional comments: [Printed ephemera] 1 sheet (verso blank)
Commentaires supplémentaires:
- Coloured pages/
Pages de couleur
- Pages damaged/
Pages endommagées
- Pages restored and/or laminated/
Pages restaurées et/ou pelliculées
- Pages discoloured, stained or foxed/
Pages décolorées, tachetées ou piquées
- Pages detached/
Pages détachées
- Showthrough/
Transparence
- Quality of print varies/
Qualité inégale de l'impression
- Includes supplementary material/
Comprend du matériel supplémentaire
- Only edition available/
Seule édition disponible
- Pages wholly or partially obscured by errata slips, tissues, etc., have been refilmed to ensure the best possible image/
Les pages totalement ou partiellement obscurcies par un feuillet d'errata, une pelure, etc., ont été filmées à nouveau de façon à obtenir la meilleure image possible.

This item is filmed at the reduction ratio checked below/
Ce document est filmé au taux de réduction indiqué ci-dessous.

10X	12X	14X	16X	18X	20X	22X	24X	26X	28X	30X	32X
						✓					

The copy filmed here has been reproduced thanks to the generosity of:

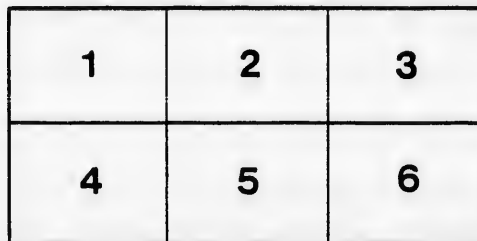
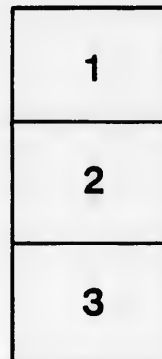
D. B. Weldon Library
University of Western Ontario
(Regional History Room)

The images appearing here are the best quality possible considering the condition and legibility of the original copy and in keeping with the filming contract specifications.

Original copies in printed paper covers are filmed beginning with the front cover and ending on the last page with a printed or illustrated impression, or the back cover when appropriate. All other original copies are filmed beginning on the first page with a printed or illustrated impression, and ending on the last page with a printed or illustrated impression.

The last recorded frame on each microfiche shall contain the symbol \rightarrow (meaning "CONTINUED"), or the symbol ∇ (meaning "END"), whichever applies.

Maps, plates, charts, etc., may be filmed at different reduction ratios. Those too large to be entirely included in one exposure are filmed beginning in the upper left hand corner, left to right and top to bottom, as many frames as required. The following diagrams illustrate the method:



L'exemplaire filmé fut reproduit grâce à la générosité de:

D. B. Weldon Library
University of Western Ontario
(Regional History Room)

Les images suivantes ont été reproduites avec le plus grand soin, compte tenu de la condition et de la netteté de l'exemplaire filmé, et en conformité avec les conditions du contrat de filmage.

Les exemplaires originaux dont la couverture en papier est imprimée sont filmés en commençant par le premier plat et en terminant soit par la dernière page qui comporte une empreinte d'impression ou d'illustration, soit par le second plat, selon le cas. Tous les autres exemplaires originaux sont filmés en commençant par la première page qui comporte une empreinte d'impression ou d'illustration et en terminant par la dernière page qui comporte une telle empreinte.

Un des symboles suivants apparaîtra sur la dernière image de chaque microfiche, selon le cas: le symbole \rightarrow signifie "A SUIVRE", le symbole ∇ signifie "FIN".

Les cartes, planches, tableaux, etc., peuvent être filmés à des taux de réduction différents. Lorsque le document est trop grand pour être reproduit en un seul cliché, il est filmé à partir de l'angle supérieur gauche, de gauche à droite, et de haut en bas, en prenant le nombre d'images nécessaire. Les diagrammes suivants illustrent la méthode.

rrata
o

pelure,
n à

RULES AND REGULATIONS

GOVERNING THE

Base Ball Championship of the Dominion



1st. That any regularly organized Base Ball Club winning the Silver Ball, now in the hands of the Maple Leaf Base Ball Club of Guelph, shall be acknowledged as the Champion Club of the Dominion of Canada.

2nd. That a single game shall in all cases decide the Championship.

3rd. That all the matches for the Championship shall be played strictly in accordance with the rules and regulations laid down by the "National Base Ball Association" of the United States and published in Chadwick's Book of Rules and Regulations, with the Rules herein enumerated.

4th. That in no case shall the Champion Club be considered the challenging party.

5th. That to prevent any misunderstanding, every Club playing for the Championship, in the event of being unsuccessful, shall lose the Ball played with during the match.

6th. That any Club winning the Championship shall furnish two sureties in the sum of fifty dollars each, to some responsible person appointed by the givers or losers of the Silver Ball, on the due delivery of the Ball, when fairly won; or farther, that in the event of a Club becoming disorganized while holding the Silver Ball, it shall be given up to the Maple Leaf Base Ball Club of Guelph, and then to be played for as in the first instance, it being the Club from which the Silver Ball emanated, consequently the owners of the Silver Ball, provided no Club is able to hold or retain possession of it for two successive years.

7th. That any Club holding the Ball for two years in succession, and in accordance with these rules, it shall become the undisputed property of that Club, and then it shall be disposed of as that Club shall think proper.

8th. That no match game for the Championship Ball shall be played sooner than the first of June or later than the 30th of September, in each year, unless agreed to by the Champion Club.

9th. That the Champion Club shall be in duty bound to accept all challenges for the Championship Ball in due rotation, and the challenged Club cannot be compelled to play inside of fourteen days from date of the preceding Championship match.

10th. That no Club shall be recognized as the Champion Club until after the Champion Ball is duly won and received from the Club from which the Silver Ball was won.

11th. That any Club competing for the Championship shall receive twenty-five per cent. of the nett gate receipts.

12th. That no Club shall be entitled to hold the Silver Ball unless they can provide an enclosed ground of sufficient size, free from obstructions, for a Championship match to be played upon.

13th. That all Championship matches be played with the "Professional Ryan Dead Ball."

14th. That all matches for the Championship be played on the grounds of the Champions.

15th. That no Club can accept a challenge for the Championship of Canada unless being duly in possession of the Silver Ball as governed by the foregoing rules and regulations.

Guelph, 1st May, 1874.

(Mercury Print.)

