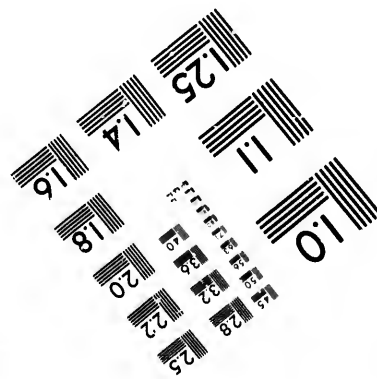
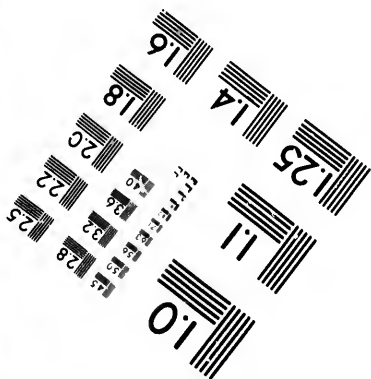
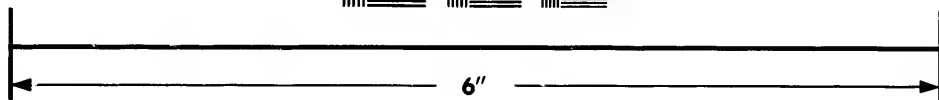
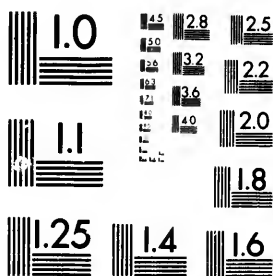


**IMAGE EVALUATION
TEST TARGET (MT-3)**



**Photographic
Sciences
Corporation**

23 WEST MAIN STREET
WEBSTER, N.Y. 14580
(716) 872-4503

1.5 2.8
3.0 3.2 2.5
3.6 2.2
2.0
8

**CIHM/ICMH
Microfiche
Series.**

**CIHM/ICMH
Collection de
microfiches.**



Canadian Institute for Historical Microreproductions / Institut canadien de microreproductions historiques

10

© 1981

Technical and Bibliographic Notes/Notes techniques et bibliographiques

The Institute has attempted to obtain the best original copy available for filming. Features of this copy which may be bibliographically unique, which may alter any of the images in the reproduction, or which may significantly change the usual method of filming, are checked below.

L'Institut a microfilmé le meilleur exemplaire qu'il lui a été possible de se procurer. Les détails de cet exemplaire qui sont peut-être uniques du point de vue bibliographique, qui peuvent modifier une image reproduite, ou qui peuvent exiger une modification dans la méthode normale de filmage sont indiqués ci-dessous.

- Coloured covers/
Couverture de couleur
- Covers damaged/
Couverture endommagée
- Covers restored and/or laminated/
Couverture restaurée et/ou pelliculée
- Cover title missing/
Le titre de couverture manque
- Coloured maps/
Cartes géographiques en couleur
- Coloured ink (i.e. other than blue or black)/
Encre de couleur (i.e. autre que bleue ou noire)
- Coloured plates and/or illustrations/
Planches et/ou illustrations en couleur
- Bound with other material/
Relié avec d'autres documents
- Tight binding may cause shadows or distortion
along interior margin/
La reliure serrée peut causer de l'ombre ou de la
distortion le long de la marge intérieure
- Blank leaves added during restoration may
appear within the text. Whenever possible, these
have been omitted from filming/
Il se peut que certaines pages blanches ajoutées
lors d'une restauration apparaissent dans le texte,
mais, lorsque cela était possible, ces pages n'ont
pas été filmées.
- Additional comments:/
Commentaires supplémentaires:

- Coloured pages/
Pages de couleur
- Pages damaged/
Pages endommagées
- Pages restored and/or laminated/
Pages restaurées et/ou pelliculées
- Pages discoloured, stained or foxed/
Pages décolorées, tachetées ou piquées
- Pages detached/
Pages détachées
- Showthrough/
Transparence
- Quality of print varies/
Qualité inégale de l'impression
- Includes supplementary material/
Comprend du matériel supplémentaire
- Only edition available/
Seule édition disponible
- Pages wholly or partially obscured by errata
slips, tissues, etc., have been refilmed to
ensure the best possible image/
Les pages totalement ou partiellement
obscurcies par un feuillet d'errata, une pelure,
etc., ont été filmées à nouveau de façon à
obtenir la meilleure image possible.

This item is filmed at the reduction ratio checked below/
Ce document est filmé au taux de réduction indiqué ci-dessous.

10X	12X	14X	16X	18X	20X	22X	24X	26X	28X	30X	32X
			✓								

The copy filmed here has been reproduced thanks to the generosity of:

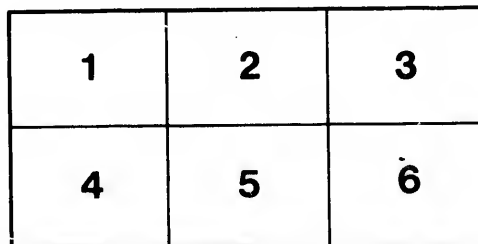
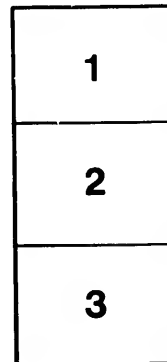
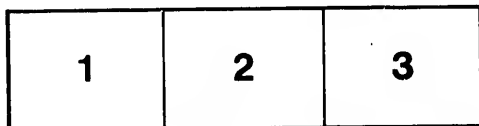
Library of the Public
Archives of Canada

The images appearing here are the best quality possible considering the condition and legibility of the original copy and in keeping with the filming contract specifications.

Original copies in printed paper covers are filmed beginning with the front cover and ending on the last page with a printed or illustrated impression, or the back cover when appropriate. All other original copies are filmed beginning on the first page with a printed or illustrated impression, and ending on the last page with a printed or illustrated impression.

The last recorded frame on each microfiche shall contain the symbol \rightarrow (meaning "CONTINUED"), or the symbol ∇ (meaning "END"), whichever applies.

Maps, plates, charts, etc., may be filmed at different reduction ratios. Those too large to be entirely included in one exposure are filmed beginning in the upper left hand corner, left to right and top to bottom, as many frames as required. The following diagrams illustrate the method:



L'exemplaire filmé fut reproduit grâce à la générosité de:

La bibliothèque des Archives
publiques du Canada

Les images suivantes ont été reproduites avec le plus grand soin, compte tenu de la condition et de la netteté de l'exemplaire filmé, et en conformité avec les conditions du contrat de filmage.

Les exemplaires originaux dont la couverture en papier est imprimée sont filmés en commençant par le premier plat et en terminant soit par la dernière page qui comporte une empreinte d'impression ou d'illustration, soit par le second plat, selon le cas. Tous les autres exemplaires originaux sont filmés en commençant par la première page qui comporte une empreinte d'impression ou d'illustration et en terminant par la dernière page qui comporte une telle empreinte.

Un des symboles suivants apparaîtra sur la dernière image de chaque microfiche, selon le cas: le symbole \rightarrow signifie "A SUIVRE", le symbole ∇ signifie "FIN".

Les cartes, planches, tableaux, etc., peuvent être filmés à des taux de réduction différents. Lorsque le document est trop grand pour être reproduit en un seul cliché, il est filmé à partir de l'angle supérieur gauche, de gauche à droite, et de haut en bas, en prenant le nombre d'images nécessaire. Les diagrammes suivants illustrent la méthode.

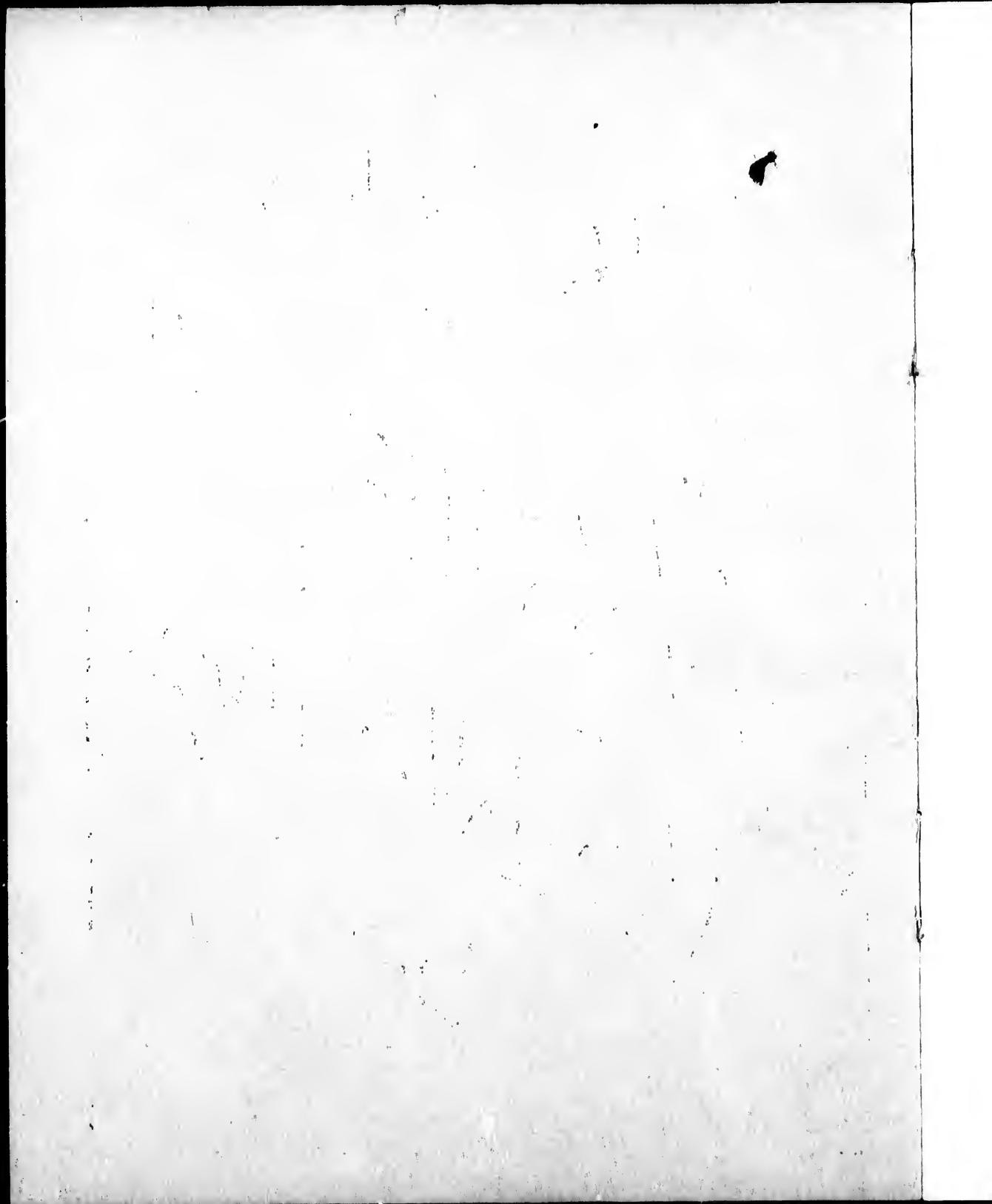
ails
du
difier
une
page

rrata
o

elure,
n à

32X

GOING
TO
WESTERN
CANADA



GOING TO WESTERN CANADA.

This little pamphlet is intended only for those who have read, in other publications, more detailed information concerning Western Canada. If any one into whose hands this may fall has not obtained information enabling him to determine upon taking up land in Western Canada, he should write to any one of the following agencies, asking for printed documents concerning Western Canada, according to which place he desires to visit or settle in :—

M. V. McINNES, No. 1 Merrill Block, Detroit,
Michigan.

D. L. CAVEN, Bad Axe, Michigan.

JAMES GRIEVE, Reed City, Michigan.

J. S. CRAWFORD, 102 West Ninth Street, Kansas
City, Missouri.

BENJAMIN DAVIES, 154 East Third Street. St.
Paul, Minn.

T. O. CURRIE, Stevens Point, Wisconsin.

C. J. BROUGHTON, 1223 Monadnock Building,
Chicago, Ill.

W. V. BENNETT, 801 New York Life Building,
Omaha, Neb.

W. H. ROGERS, Watertown, South Dakota.

ALFRED S. ROLLO, Leuark Hotel, Boise City,
Idaho.

~~D. H. MURPHY, Stratford, Iowa.~~

N. BARTHOLOMEW, 306 Fifth Street, Des Moines,
Iowa.

J. H. M. PARKER, 502 Palladio Building, Duluth,
Minn.

WILLIAM RITCHIE, Grafton, North Dakota.

1378
(70)



T seems from what people say who have been there and those who have taken up farms that Western Canada is about the best part of this continent for a man who wants to farm or go ranching. I've a mind to go, but do not know which of the places to go to. Which should you say ?

That depends on what you want to do, whether you have any capital to speak of, and what your ideas are.

What would I have to pay for land ?

Ten dollars for entering your homestead. Nothing for the land if you settle on Government land ; about \$3 to \$6 an acre if you buy from a railway.

Where is the free land ? Should I have far to go, or far from a railway to get it ?

No. In the older settled parts of Manitoba the free land in the vicinity of the railways is mostly taken up, but they have recently built a line into the Dauphin district, which has opened up a large acreage of first class land, with plenty of wood and water, as well as prairie.

How can I get there ?

Go to Winnipeg by the Canadian Pacific Railway or the Great Northern or the Northern Pacific, and there connect with rail for Dauphin.

When I get to Winnipeg, what should I do ?

Go to the office of the Commissioner of Immigration, near the C. P. R. station, and see the sectional maps of the province, and ask the officials for information generally. They will tell you where there is vacant land, not only in the Dauphin country but all over. They will tell you anything else you want to know. That is their business, and they have no interest in misleading you, or in sending you to one part of the country instead of another.

Supposing I wanted to stay near Winnipeg, or Portage la Prairie, or Brandon, or any of the larger towns of Manitoba and could not see any land on the sectional maps at the office to suit me, what sort of a deal could I make with the railway men ?

They charge about \$3 to \$6 an acre for farm lands in Manitoba; not quite so much for land in Assiniboia or Alberta. You can see all their sectional maps and get all the information you want at their offices in Winnipeg. They will give you the cold facts of the matter and let you choose for yourself, or they will advise you if you ask them. If you pay cash for the land, you get 10 per cent discount. If you want

time, you can pay one-tenth down and the rest in nine annual instalments with 6 per cent interest, and you



Winter in Western Canada.

can pay it off, if you like, as soon as your crop provides the money.

Is there any place where I could get one-quarter section free and buy the next from the railway or the Government ?

Yes. In Manitoba, but there is a greater choice in any of the Territories before named.

Is the land there as good for farming as it is in Manitoba ?

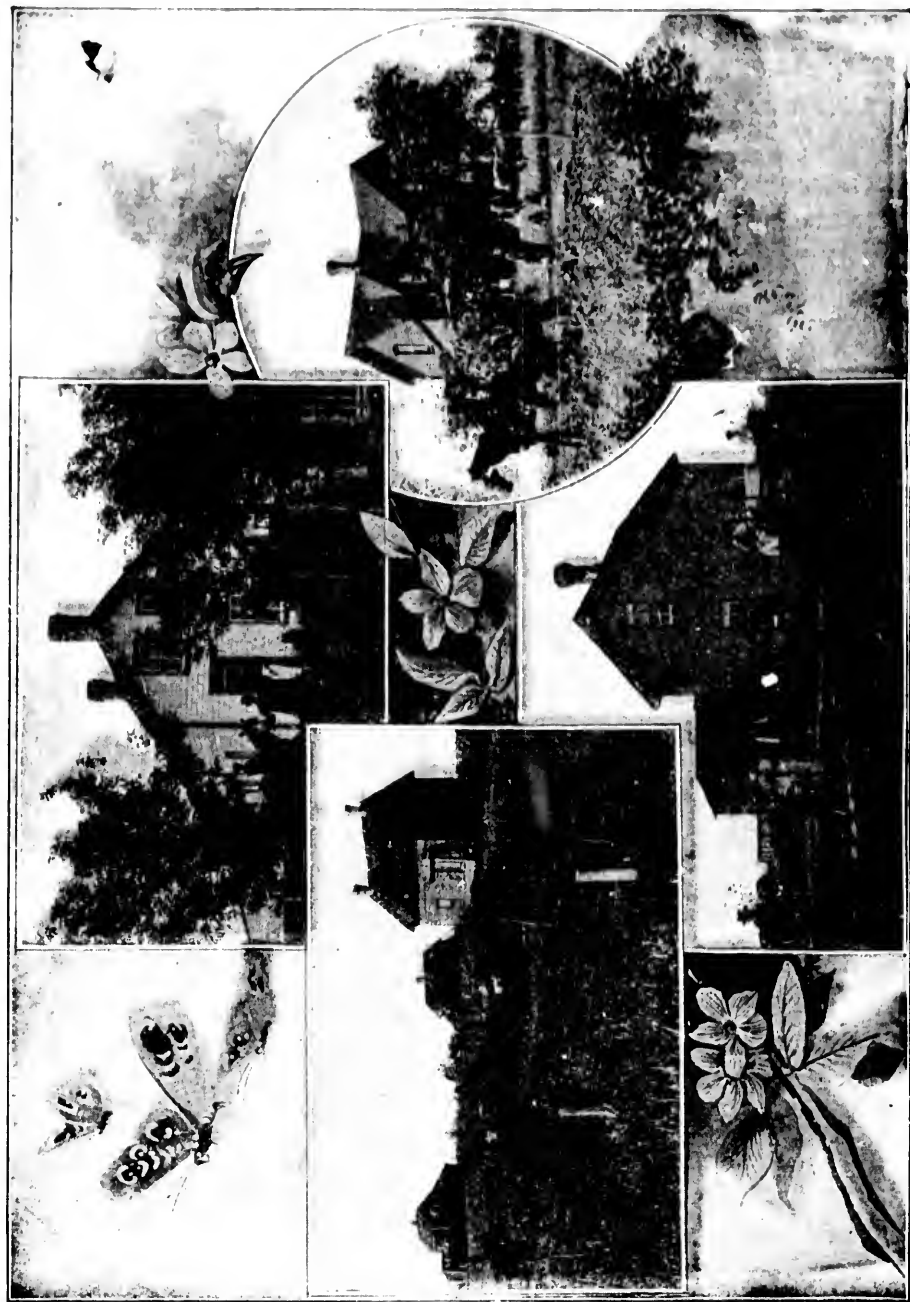
Quite as good in parts. In Eastern Assiniboia, as far west as Regina; in Northern Alberta, north of Red Deer on the Calgary and Edmonton Railway and in parts of Saskatchewan. For ranching it is better to go to Western Assiniboia or Southern Alberta.

Must I stay at Winnipeg to make a homestead entry on Government land ?

No. There are land registration offices at Winnipeg, Brandon, Minnedosa, Lake Dauphin, in Manitoba; and in the Territories at Alameda, Regina, Yorkton, Prince Albert, Battleford, Edmonton, Red Deer, Calgary and Lethbridge.

What advantage has Manitoba over the Territories that makes folks take up land there first ?

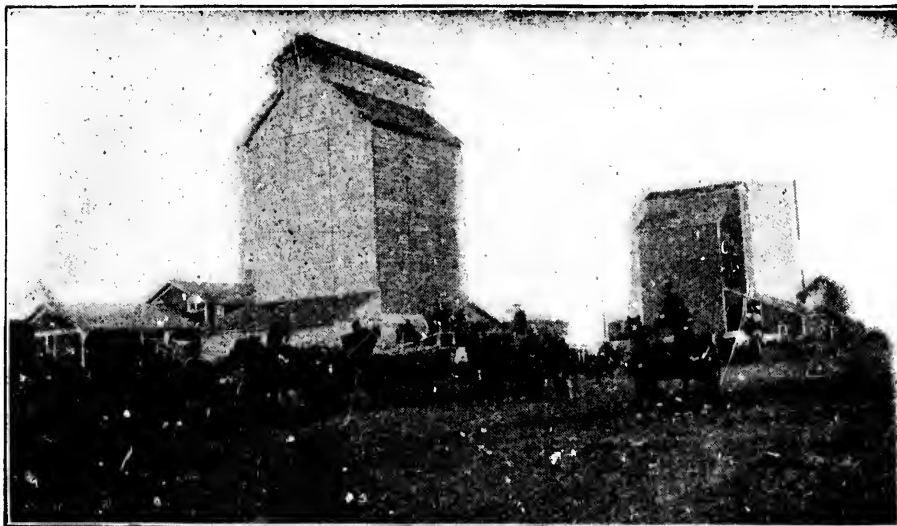
It was opened up first, that is all. It is more thickly populated, and therefore more neighbours, and easier for the children to go to school. On the other hand, if you want more unoccupied land near you for grazing your cattle and cutting hay, you had better go farther west.



Homes in Western Canada.

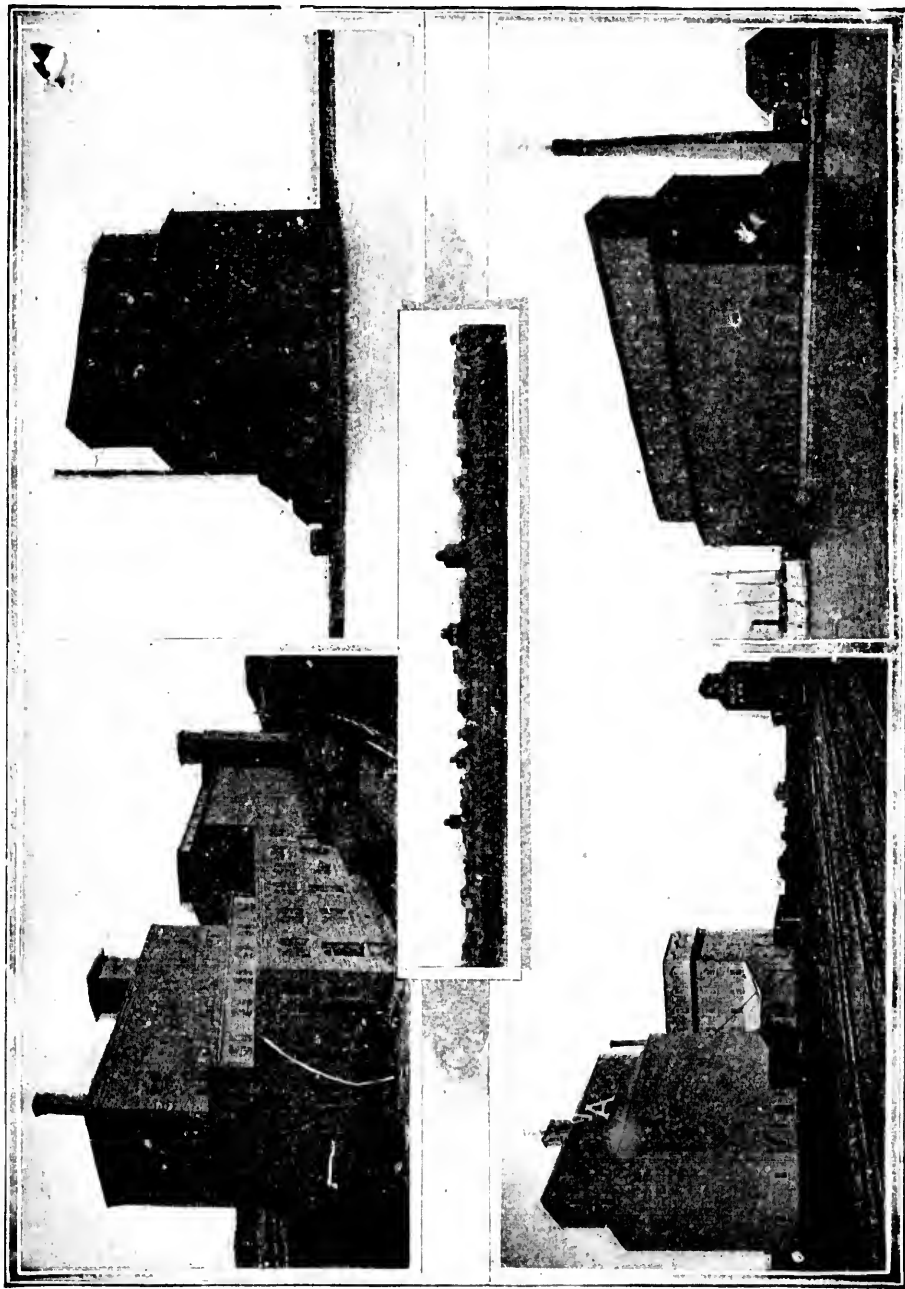
Is the other country as good, and stores, mills, elevators, and such like to be found ?

Yes. There are first class places to settle out of Manitoba. Round about Edmonton, and down the line half-way to Calgary is land that for mixed wood, water and prairie, cannot be excelled. Eastern Assiniboia, for some distance west of Manitoba, has first



Prairie Elevators.

class land for mixed farming. Round about Prince Albert and Battleford, on the Saskatchewan, with rail and, at times, river communication with Winnipeg, is some of the prettiest farming land in the country. Within a drive from the railway station are free tracts open for bona fide settlers, and you can choose which



Elevators at Fort William.

you think will suit your own individual ideas best. Right across the whole of Western Canada and north-west, south and south-west are lines of railway with stations every few miles and before you leave Winnipeg you can learn all the particulars you want to know.

Is there any good land to be had near Winnipeg ?

Yes, lots of it, but it is all in the hands of private owners, who bought in earlier days from the half-breeds and old residents. Some of it can be had on reasonable terms, with a frontage on the river ; some of it is held at more or less fancy prices. Better make full inquiries as to any of this land having been partially cultivated and left to weeds and, generally, all about it before buying.

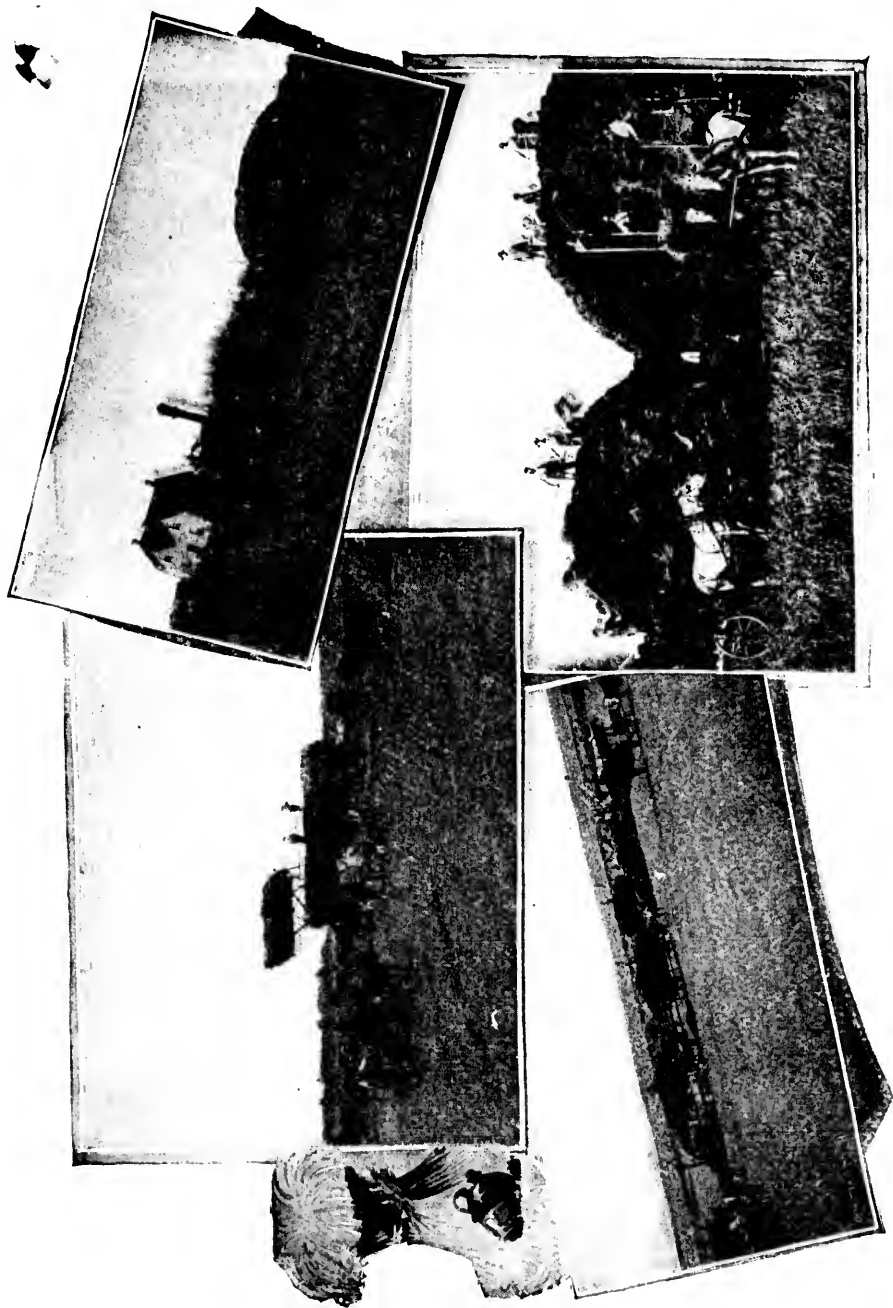
How about a market in the further off districts ?

You will find a market at the nearest railway station. You grow the stuff and the shippers' travelling men will do the rest.

Does the Government charge any duty on settlers' effects or live stock coming into Western Canada ?

Under the Customs Tariff of Canada a bona fide settler may bring into Canada, free of duty, as "Settlers' Effects," the following articles, viz.:—

Wearing apparel, household furniture, professional books, implements and tools of trade, occupation or employment, which the settler has had in actual use



Harvest scenes in Western Canada.

for at least six months before removal to Canada; musical instruments, domestic sewing machines, carts, and other vehicles, and agricultural implements in use by the settler at least one year before his removal to Canada, not to include machinery or articles imported for use in any manufacturing establishment, or for sale; provided that any dutiable article entered as settler's effects may not be so entered unless brought with the settler on his first arrival, and shall not be sold or otherwise disposed of without payment of duty, until after two years' actual use in Canada.

Live stock, when imported into Manitoba or the North-west Territories by bona fide intending settlers, shall be free, until otherwise ordered by the Governor in Council, subject to the following regulations made by the Comptroller of Customs :—

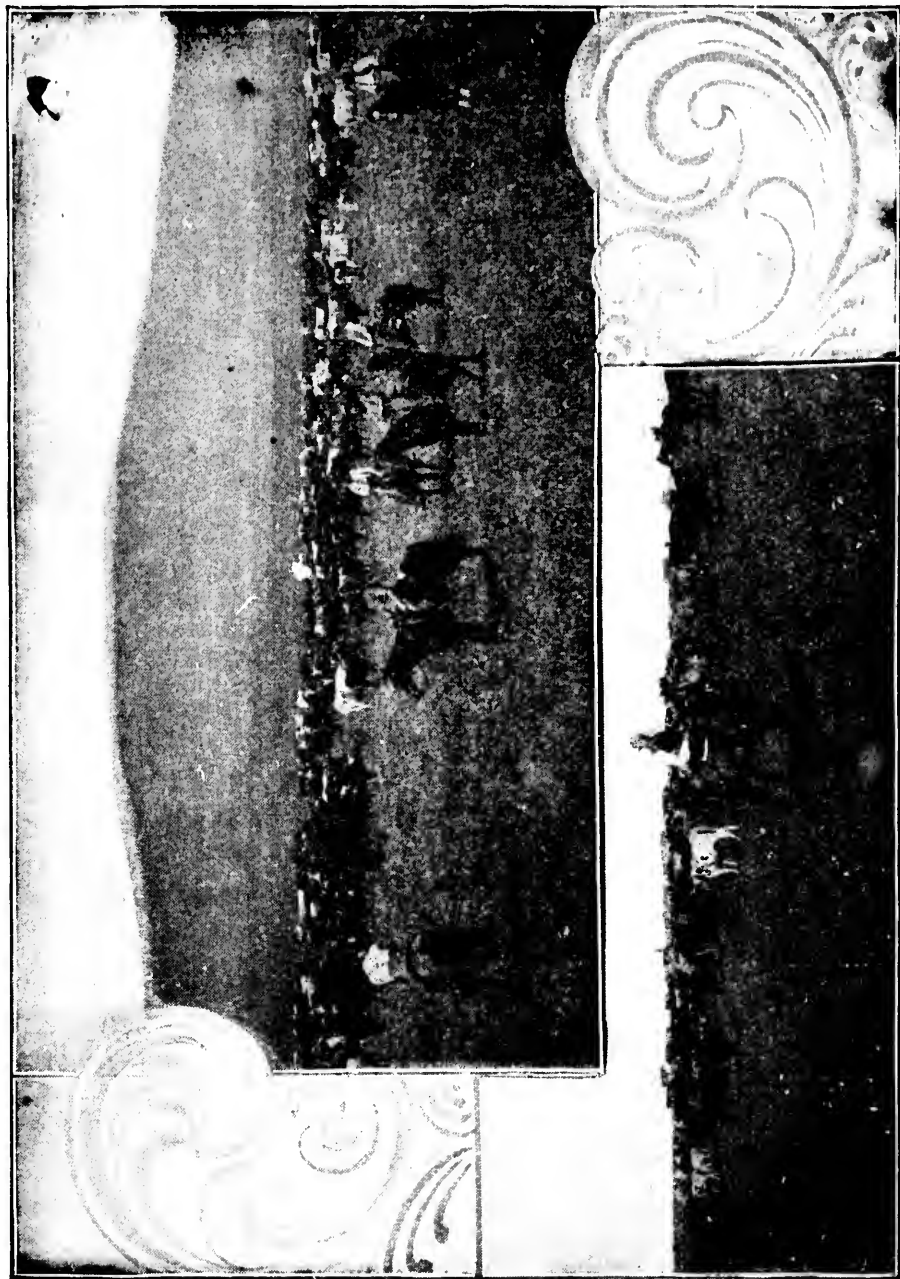
Each settler is allowed one animal of neat stock or horses for each ten acres of land purchased or otherwise secured.

One sheep or swine for each acre so secured.

If horses or cattle are brought in together, one animal allowed for each ten acres so secured.

If sheep and swine are brought in together, one animal for each acre so secured.

If horses, cattle, sheep and swine are brought in together, the same proportions to be observed.



Ranching in Western Canada

The operation of the above regulation is limited to 320 acres.

The rate of duty on stock in excess of the above numbers is 20 per cent.

BRITISH COLUMBIA TO THE YUKON.

If I want to go on to the gold fields in British Columbia or to the Klondike, or any part of the Yukon district, can I go ?

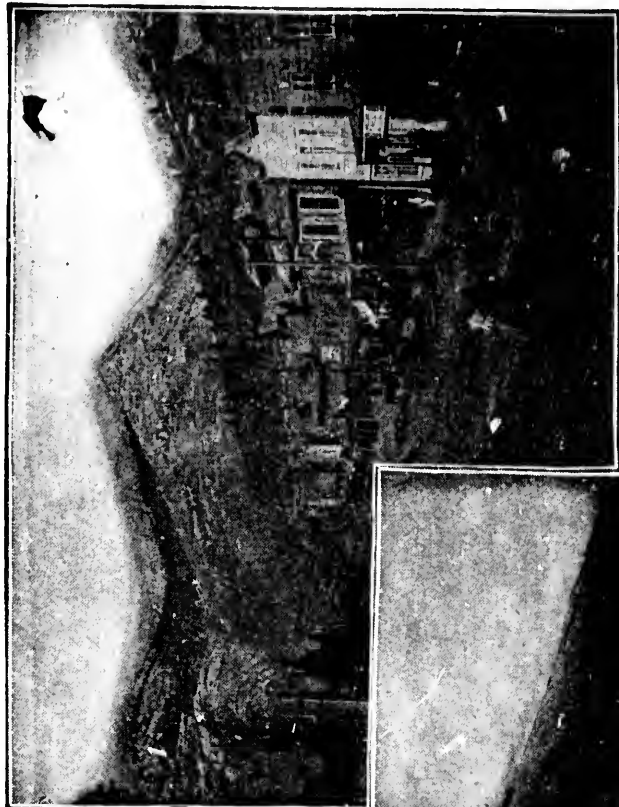
Yes. British Columbia adjoins Western Canada, with a main line of railway running clear through it to the coast, and several branches, and lines of steamboats in the interior lakes, to get into the heart of the country.

How do I get to the Kootenay Valleys and the mining districts about them ?

The Canadian Pacific Railway runs to Revelstoke, in the Rocky Mountains, and from there you can go down the Arrow Lakes by boat to Nelson, or to Rossland, or to any of the mining camps in West Kootenay. A few hours' journey to the east of Revelstoke is the village of Golden, in the mountains, and here you can make connection with boat for the mines in East Kootenay.

Can I get miners' supplies at these places ?

Yes, or at Nelson or Rossland.

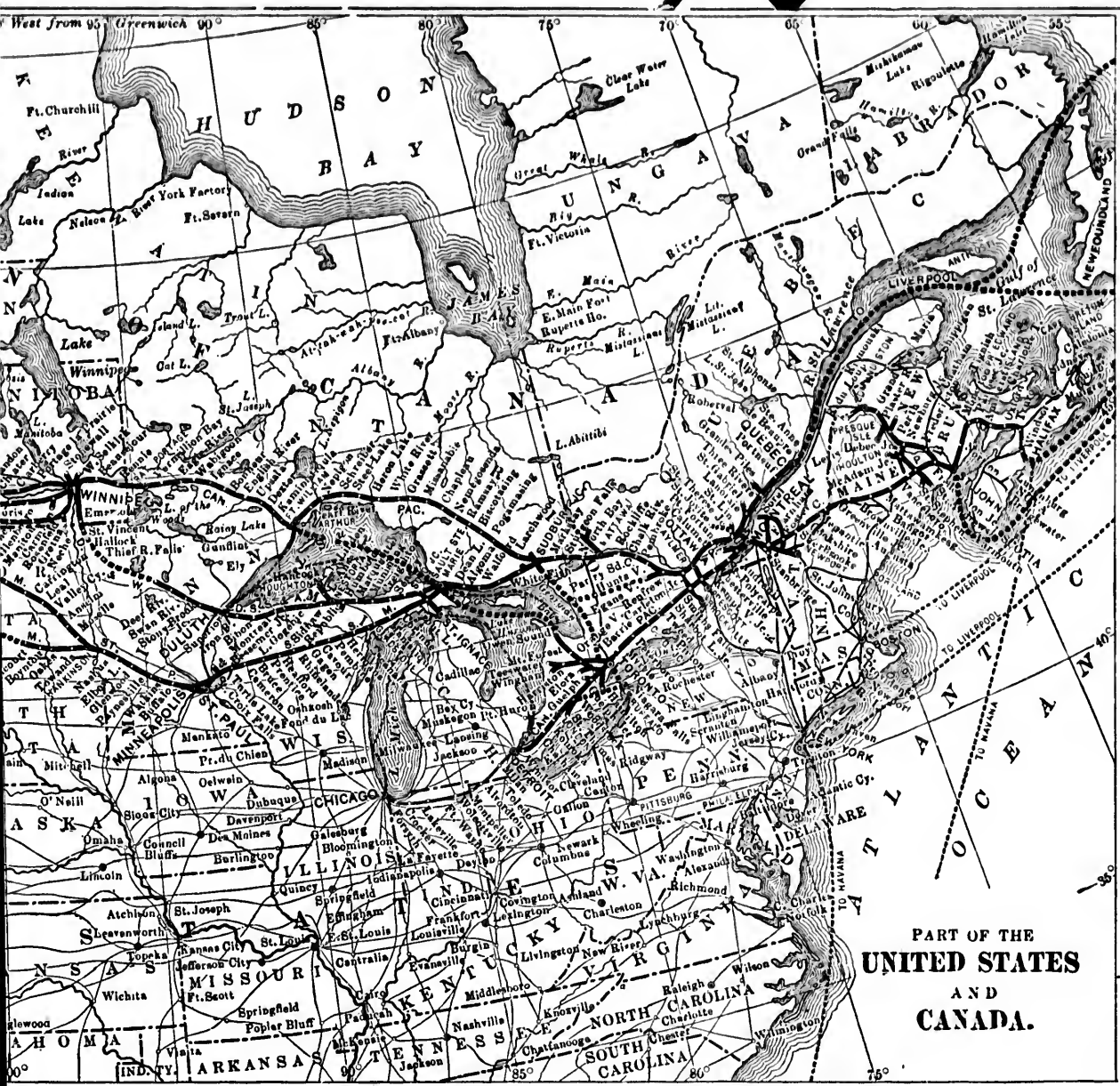


Mining Towns in British Columbia.

Is Western Canada on the road to the Yukon?

Going from the east you pass through it from end to end, unless you propose to go by Edmonton, on the east side of the mountains. In that case you change at Calgary, in Alberta (Western Canada), and go up the Calgary and Edmonton line instead of going clear through to the coast. If you are going in from the west side, you go to Vancouver or Victoria, where you purchase your outfit and go up by boat to the point from which you intend to start inland. There are several ways of going in to the Yukon country, and concerning each of these you had better make close inquiries before deciding what suits your requirements most nearly.

Special rates are given by the Canadian Pacific Railway to bona fide settlers going into Western Canada to take up land, but this privilege is not accorded to intending miners. They pay as every one else pays. Do not forget that to obtain this reduced rate, you must get a certificate from one of the Canadian Government agents that you are a bona fide intending settler. A list of the principal of such agents is given at the beginning of this book.



PART OF THE
UNITED STATES
AND
CANADA.

