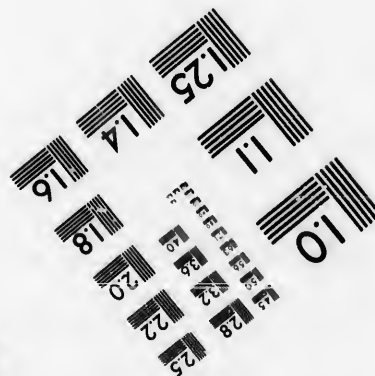
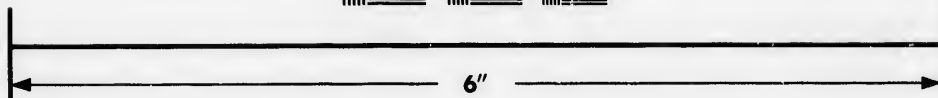
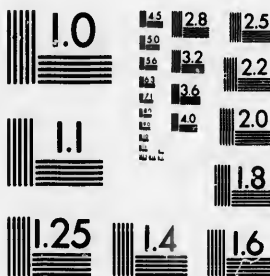


**IMAGE EVALUATION
TEST TARGET (MT-3)**



**Photographic
Sciences
Corporation**

23 WEST MAIN STREET
WEBSTER, N.Y. 14580
(716) 872-4503

15 128
16 132
18 22
20 25

**CIHM/ICMH
Microfiche
Series.**

**CIHM/ICMH
Collection de
microfiches.**



Canadian Institute for Historical Microreproductions / Institut canadien de microreproductions historiques

10
01

© 1986

Technical and Bibliographic Notes/Notes techniques et bibliographiques

The Institute has attempted to obtain the best original copy available for filming. Features of this copy which may be bibliographically unique, which may alter any of the images in the reproduction, or which may significantly change the usual method of filming, are checked below.

L'Institut a microfilmé le meilleur exemplaire qu'il lui a été possible de se procurer. Les détails de cet exemplaire qui sont peut-être uniques du point de vue bibliographique, qui peuvent modifier une image reproduite, ou qui peuvent exiger une modification dans la méthode normale de filmage sont indiqués ci-dessous.

- Coloured covers/
Couverture de couleur
- Covers damaged/
Couverture endommagée
- Covers restored and/or laminated/
Couverture restaurée et/ou pelliculée
- Cover title missing/
Le titre de couverture manque
- Coloured maps/
Cartes géographiques en couleur
- Coloured ink (i.e. other than blue or black)/
Encre de couleur (i.e. autre que bleue ou noire)
- Coloured plates and/or illustrations/
Planches et/ou illustrations en couleur
- Bound with other material/
Relié avec d'autres documents
- Tight binding may cause shadows or distortion along interior margin/
Lorsque la liure serrée peut causer de l'ombre ou de la distorsion le long de la marge intérieure
- Blank leaves added during restoration may appear within the text. Whenever possible, these have been omitted from filming/
Il se peut que certaines pages blanches ajoutées lors d'une restauration apparaissent dans le texte, mais, lorsque cela était possible, ces pages n'ont pas été filmées.
- Additional comments:/
Commentaires supplémentaires:

- Coloured pages/
Pages de couleur
- Pages damaged/
Pages endommagées
- Pages restored and/or laminated/
Pages restaurées et/ou pelliculées
- Pages discoloured, stained or foxed/
Pages décolorées, tachetées ou piquées
- Pages detached/
Pages détachées
- Showthrough/
Transparence
- Quality of print varies/
Qualité inégale de l'impression
- Includes supplementary material/
Comprend du matériel supplémentaire
- Only edition available/
Seule édition disponible
- Pages wholly or partially obscured by errata slips, tissues, etc., have been refilmed to ensure the best possible image/
Les pages totalement ou partiellement obscurcies par un feuillet d'errata, une pelure, etc., ont été filmées à nouveau de façon à obtenir la meilleure image possible.

This item is filmed at the reduction ratio checked below/
Ce document est filmé au taux de réduction indiqué ci-dessous.

10X	12X	14X	16X	18X	20X	22X	24X	26X	28X	30X	32X
						/					

The to th

The pose of th film

Origini begi the i sion, othe first sion, or ill

The shall TINU whic

Map differ entire begi right requ met

The copy filmed here has been reproduced thanks to the generosity of:

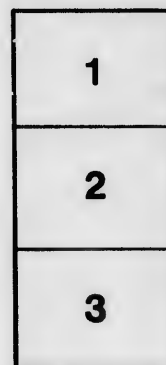
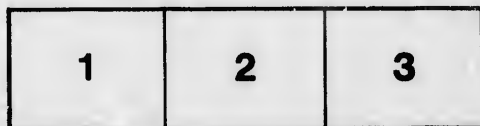
Douglas Library
Queen's University

The images appearing here are the best quality possible considering the condition and legibility of the original copy and in keeping with the filming contract specifications.

Original copies in printed paper covers are filmed beginning with the front cover and ending on the last page with a printed or illustrated impression, or the back cover when appropriate. All other original copies are filmed beginning on the first page with a printed or illustrated impression, and ending on the last page with a printed or illustrated impression.

The last recorded frame on each microfiche shall contain the symbol \rightarrow (meaning "CONTINUED"), or the symbol ∇ (meaning "END"), whichever applies.

Maps, plates, charts, etc., may be filmed at different reduction ratios. Those too large to be entirely included in one exposure are filmed beginning in the upper left hand corner, left to right and top to bottom, as many frames as required. The following diagrams illustrate the method:



L'exemplaire filmé fut reproduit grâce à la générosité de:

Douglas Library
Queen's University

Les images suivantes ont été reproduites avec le plus grand soin, compte tenu de la condition et de la netteté de l'exemplaire filmé, et en conformité avec les conditions du contrat de filmage.

Les exemplaires originaux dont la couverture en papier est imprimée sont filmés en commençant par le premier plat et en terminant soit par la dernière page qui comporte une empreinte d'impression ou d'illustration, soit par la seconde plat, selon le cas. Tous les autres exemplaires originaux sont filmés en commençant par la première page qui comporte une empreinte d'impression ou d'illustration et en terminant par la dernière page qui comporte une telle empreinte.

Un des symboles suivants apparaîtra sur la dernière image de chaque microfiche, selon le cas: le symbole \rightarrow signifie "A SUIVRE", le symbole ∇ signifie "FIN".

Les cartes, planches, tableaux, etc., pouvant être filmés à des taux de réduction différents. Lorsque le document est trop grand pour être reproduit en un seul cliché, il est filmé à partir de l'angle supérieur gauche, de gauche à droite, et de haut en bas, en prenant le nombre d'images nécessaire. Les diagrammes suivants illustrent la méthode.

ails
du
difier
une
page

rata
elure.
à

32X



The
ISLANDS
of the
GULF

Cape Breton
and
Prince Edward.

LP
P5012
m.d.
R15C2

The EDITH and LORNE PIERCE
COLLECTION of CANADIANA



Queen's University at Kingston

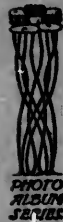
RAILWAY SERIES PHOTO ALBUMS

THE ISLANDS OF THE GULF—CAPE BRETON AND PRINCE EDWARD.
THROUGH THE EVANGELINE COUNTRY TO HALIFAX.
ST. JOHN—CITY AND RIVER.
MONTREAL—HISTORIC AND PICTURESQUE.
TORONTO—THE IDEAL SUMMER CITY.

PRICE TWENTY-FIVE CENTS EACH.

Published by W. G. MACFARLANE,
"Saturday Night" Building, Toronto,
Expressly for THE CANADA RAILWAY NEWS CO., Limited, TORONTO.

SCENIC
CENTRE



Sc For LP

Artique Int.

Fairfax 553

555

Fair

Antique Car.

Sc Fer Lf

SCENIC
CANADA
PHOTO
ALBUM
SERIES



THE LOUISBURG MONUMENT.

The Islands of the Gulf: CAPE BRETON AND PRINCE EDWARD.



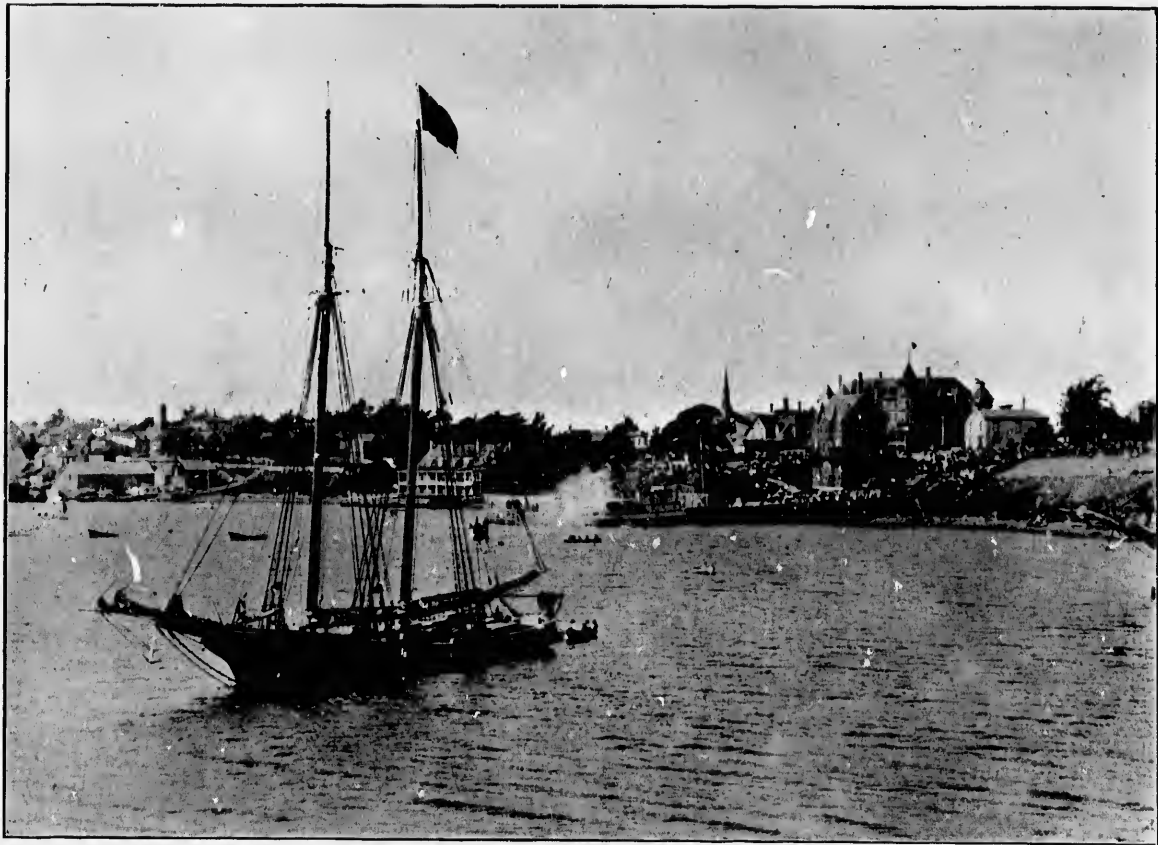
ANNED by the breezes, and lapped by the waters of the Gulf of St. Lawrence, the Islands of Cape Breton and Prince Edward are ever delightful. The dwellers and the tourists bathe in soft sunshine, and the zephyrs and billows blow new life into their sluggish veins.

Cape Breton is a land of delightful scenery. The Bras D'Or Lakes are a lovely body of placid water, reflecting the graceful outlines of the encircling hills. On the way to ancient, historic Louisburg the railway skirts Mira River and Catalone Lake, blissful and contented nature places. Louisburg is worth a visit, and a day could be delightfully spent, "Parkman" in hand, fighting over again the two great battles that were fought there for the mastery of half a continent. The erstwhile quiet little metropolis of the island, Sydney, is now witnessing a new birth, and a great northern Pittsburg is to arise here, dictating iron prices to the world. Its two thousand people, it is expected, will in ten years grow to 40,000, and Sydney will become an important commercial and manufacturing centre. The boom which has struck Sydney, will, it is expected, next strike North

LP F5012

m.d.

R1502



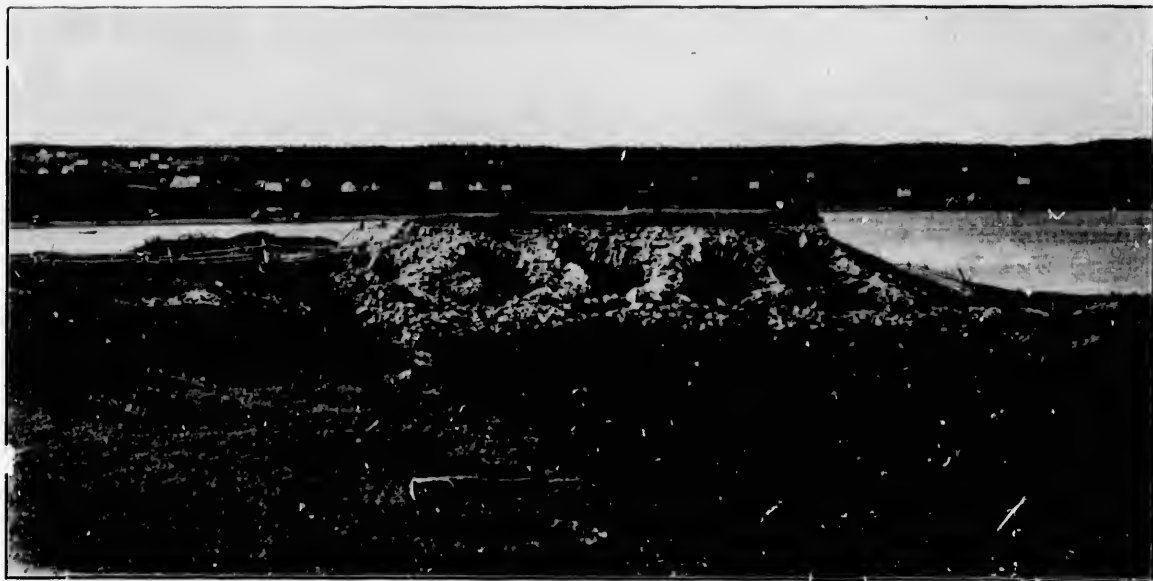
SYDNEY HARBOR, CAPE BRETON.



A CHARACTERISTIC CAPE BRETON BOATING SCENE, NEAR SYDNEY.



TOWN AND HARBOR OF SYDNEY, CAPE BRETON.



THE LAST OF LOUISBURG.

Sydney, in which a syndicate of English capitalists are deeply interested. Cape Breton certainly offers exceptional advantages as an iron producing and manufacturing centre, with abundant coal right at hand, the ore to be got from Newfoundland without railway carriage, and with admirable shipping facilities to reach the world's markets.

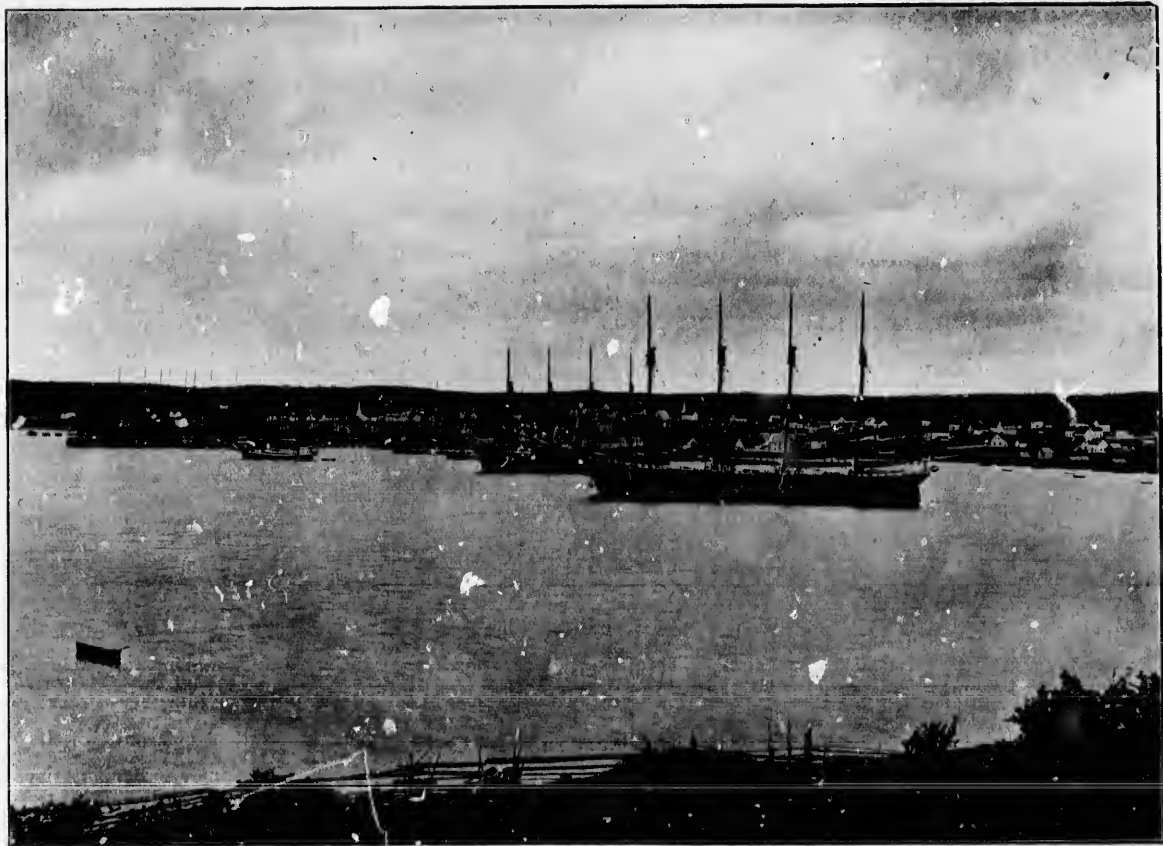


NORTH SYDNEY AND HARBOR, C.B.



MIRA RIVER ON THE ROAD TO LOUISBURG, C.B.

Prince Edward Island draws thousands of people to its shores during the summer months, for its coolness and bathing. It is a beautiful spot, with its rich, red soil, and its vivid green grasses and woods. In the richness of the colors of its landscapes, and the remarkable clearness of its atmosphere it is almost tropical, and the visitor gets much the same impression on approaching its shores as he does when cruising among the West Indies.



HARBOR AT LOUISBURG, SHOWING DOMINION COAL COMPANY'S PIER.



CATALONE LAKE ON THE ROAD TO LOUISBURG, C.B.



THE SITE OF GREATER SYDNEY. (ON

At Sydney, Cape Breton, The Dominion Iron and Steel Company, Limited, a Twenty Million Dollar American and Canadian Sydney
iron producing cities of the world. The quiet homesteads are giving way to great furnaces and mammoth factories
growth of a great city is one to inspire the beholder with awe, and it is interesting to observe in the



F GREATER SYDNEY. (ON THE FURTHER SHORE).

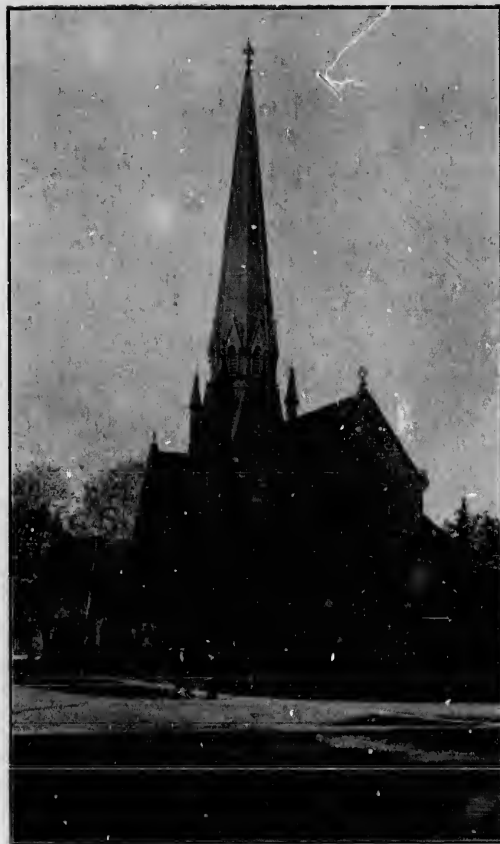
lar American and Canadian Syndicate, are creating a great manufacturing city, one which will enter into competition with the greatest furnaces and mammoth factories that stretch for some miles along the shore of an arm of Sydney Harbor. The sudden is interesting to observe in the East that phenomenon which was supposed to pertain peculiarly to the West,



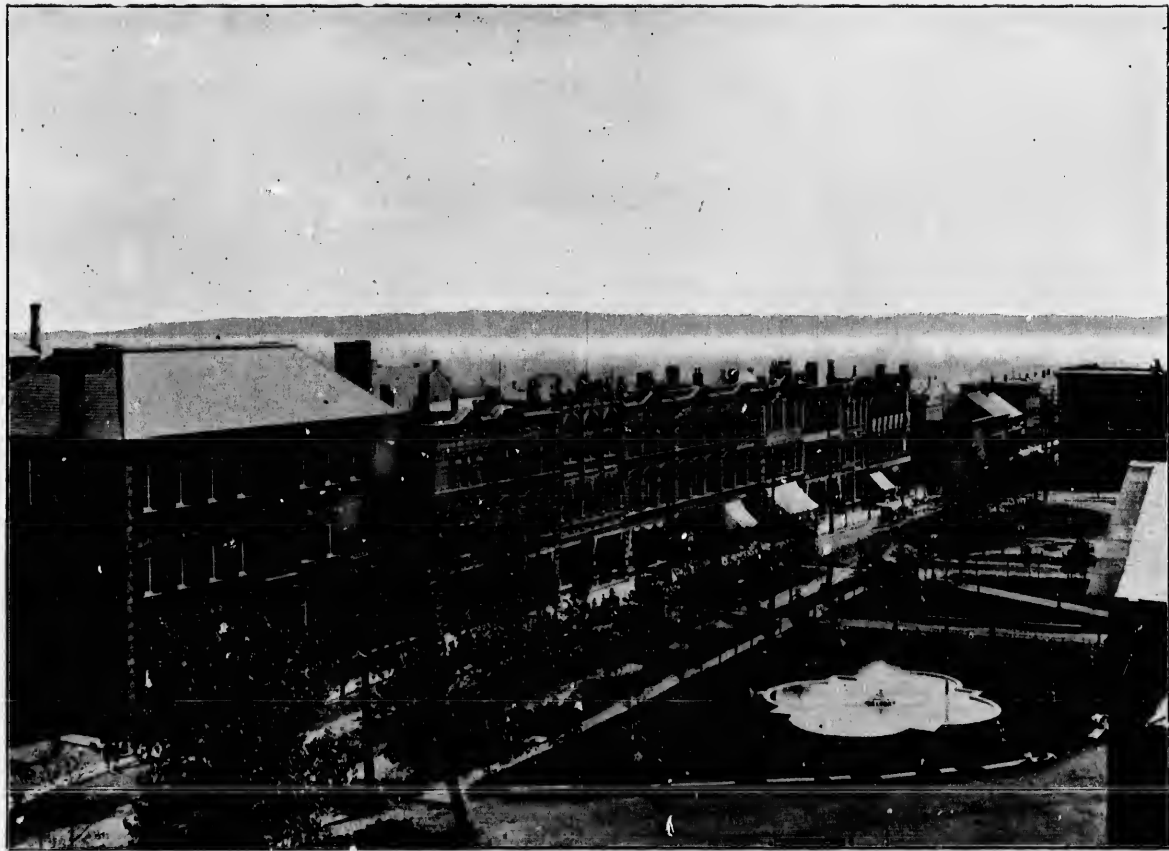
PROVINCIAL BUILDING, CHARLOTTETOWN.

The island province is a prosperous agricultural country, and its people also engage a great deal in fishing. Among its bustling towns, Charlottetown, the metropolis, must first be mentioned. Handsome buildings and streets and pretty squares give the stranger a most pleasing impression, while it lies in the centre of a number of most delightful beach and inland resorts, where bathing, boating, shooting and fishing are to be had in abundance.

Brackley Beach is reached by a carriage drive of fifteen miles from Charlottetown, and the surf bathing and fishing are excellent. Other pleasant resorts within a few miles are Rustico Beach, Tracadie Beach, Stanhope and Hampton. Malpeque, Alberton, Tignish and Souris are famed for their plover and sea-fowl shooting. Georgetown is another tourist centre, and is a beautifully laid out town. Altogether, Prince Edward Island can accommodate many thousands of tourists during the summer months, and has enough delicious pure air to supply millions with new life and vigor.



ST. JAMES PRESBYTERIAN CHURCH,
CHARLOTTETOWN, P.E.I.



VICTORIA ROW, CHARLOTTETOWN, P.E.I.



PARK ROADWAY, CHARLOTTETOWN.



VIEW EAST OF POST OFFICE, CHARLOTTETOWN, P.E.I.



FORT EDWARD, CHARLOTTETOWN.



THE ISLAND'S LOVELY BEACHES—AT CAVENDISH



A HARVESTING SCENE IN THE LAND OF SUNSHINE, PRINCE EDWARD ISLAND.



THE SAND DUNES OF PRINCE EDWARD ISLAND.



Travel
to the

"Islands of the Gulf"

where are Beaches, Yachting Grounds, and
Pure and Ever Tonic Air.

-via-

"Your Own Line"

the

INTERCOLONIAL
RAILWAY

JNO. M. LYONS,

General Passenger and Ticket
Agent,

MONCTON.

E. TIFFIN,

TRAFFIC MANAGER.

MONCTON.

