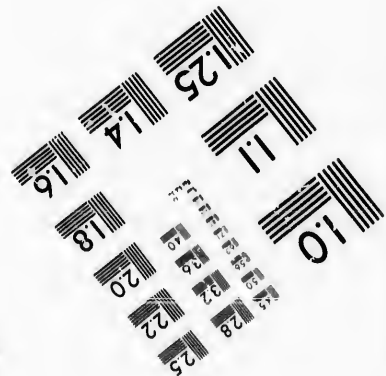
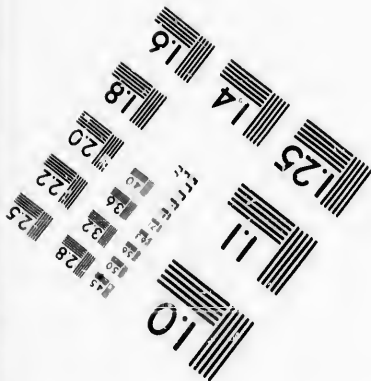
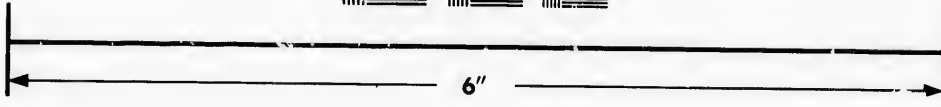
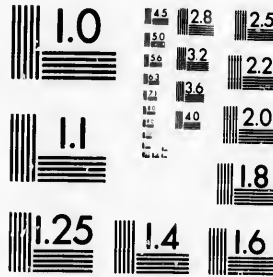


**IMAGE EVALUATION
TEST TARGET (MT-3)**



**Photographic
Sciences
Corporation**

23 WEST MAIN STREET
WEBSTER, N.Y. 14580
(716) 872-6503

25
29
32
22
20
18

**CIHM/ICMH
Microfiche
Series.**

**CIHM/ICMH
Collection de
microfiches.**



Canadian Institute for Historical Microreproductions / Institut canadien de microreproductions historiques

10

© 1986

Technical and Bibliographic Notes/Notes techniques et bibliographiques

The Institute has attempted to obtain the best original copy available for filming. Features of this copy which may be bibliographically unique, which may alter any of the images in the reproduction, or which may significantly change the usual method of filming, are checked below.

L'Institut a microfilmé le meilleur exemplaire qu'il lui a été possible de se procurer. Les détails de cet exemplaire qui sont peut-être uniques du point de vue bibliographique, qui peuvent modifier une image reproduite, ou qui peuvent exiger une modification dans la méthode normale de filmage sont indiqués ci-dessous.

- | | |
|--|--|
| <input type="checkbox"/> Coloured covers/
Couverture de couleur | <input type="checkbox"/> Coloured pages/
Pages de couleur |
| <input type="checkbox"/> Covers damaged/
Couverture endommagée | <input type="checkbox"/> Pages damaged/
Pages endommagées |
| <input type="checkbox"/> Covers restored and/or laminated/
Couverture restaurée et/ou pelliculée | <input type="checkbox"/> Pages restored and/or laminated/
Pages restaurées et/ou pelliculées |
| <input type="checkbox"/> Cover title missing/
Le titre de couverture manque | <input checked="" type="checkbox"/> Pages discoloured, stained or foxed/
Pages décolorées, tachetées ou piquées |
| <input type="checkbox"/> Coloured maps/
Cartes géographiques en couleur | <input type="checkbox"/> Pages detached/
Pages détachées |
| <input type="checkbox"/> Coloured ink (i.e. other than blue or black)/
Encre de couleur (i.e. autre que bleue ou noire) | <input checked="" type="checkbox"/> Showthrough/
Transparence |
| <input type="checkbox"/> Coloured plates and/or illustrations/
Planches et/ou illustrations en couleur | <input type="checkbox"/> Quality of print varies/
Qualité inégale de l'impression |
| <input checked="" type="checkbox"/> Bound with other material/
Relié avec d'autres documents | <input type="checkbox"/> Includes supplementary material/
Comprend du matériel supplémentaire |
| <input type="checkbox"/> Tight binding may cause shadows or distortion
along interior margin/
La reliure serrée peut causer de l'ombre ou de la
distorsion le long de la marge intérieure | <input type="checkbox"/> Only edition available/
Seule édition disponible |
| <input type="checkbox"/> Blank leaves added during restoration may
appear within the text. Whenever possible, these
have been omitted from filming/
Il se peut que certaines pages blanches ajoutées
lors d'une restauration apparaissent dans le texte,
mais, lorsque cela était possible, ces pages n'ont
pas été filmées. | <input type="checkbox"/> Pages wholly or partially obscured by errata
slips, tissues, etc., have been refilmed to
ensure the best possible image/
Les pages totalement ou partiellement
obscurcies par un feuillet d'errata, une pelure,
etc., ont été filmées à nouveau de façon à
obtenir la meilleure image possible. |
| <input type="checkbox"/> Additional comments:/
Commentaires supplémentaires: | |

This item is filmed at the reduction ratio checked below/
Ce document est filmé au taux de réduction indiqué ci-dessous.

10X	12X	14X	16X	18X	20X	22X	24X	26X	28X	30X	32X
								✓			

The copy filmed here has been reproduced thanks to the generosity of:

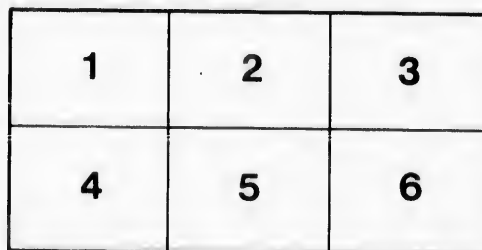
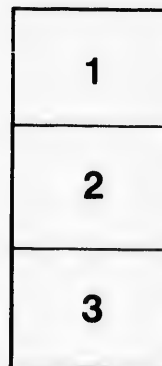
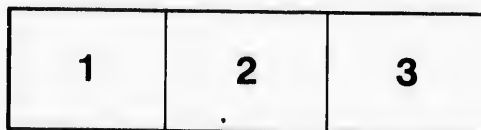
National Library of Canada

The images appearing here are the best quality possible considering the condition and legibility of the original copy and in keeping with the filming contract specifications.

Original copies in printed paper covers are filmed beginning with the front cover and ending on the last page with a printed or illustrated impression, or the back cover when appropriate. All other original copies are filmed beginning on the first page with a printed or illustrated impression, and ending on the last page with a printed or illustrated impression.

The last recorded frame on each microfiche shall contain the symbol \rightarrow (meaning "CONTINUED"), or the symbol ∇ (meaning "END"), whichever applies.

Maps, plates, charts, etc., may be filmed at different reduction ratios. Those too large to be entirely included in one exposure are filmed beginning in the upper left hand corner, left to right and top to bottom, as many frames as required. The following diagrams illustrate the method:



L'exemplaire filmé fut reproduit grâce à la générosité de:

Bibliothèque nationale du Canada

Les images suivantes ont été reproduites avec le plus grand soin, compte tenu de la condition et de la netteté de l'exemplaire filmé, et en conformité avec les conditions du contrat de filmage.

Les exemplaires originaux dont la couverture en papier est imprimée sont filmés en commençant par le premier plat et en terminant soit par la dernière page qui comporte une empreinte d'impression ou d'illustration, soit par le second plat, selon le cas. Tous les autres exemplaires originaux sont filmés en commençant par la première page qui comporte une empreinte d'impression ou d'illustration et en terminant par la dernière page qui comporte une telle empreinte.

Un des symboles suivants apparaîtra sur la dernière image de chaque microfiche, selon le cas: le symbole \rightarrow signifie "A SUIVRE", le symbole ∇ signifie "FIN".

Les cartes, planches, tableaux, etc., peuvent être filmés à des taux de réduction différents. Lorsque le document est trop grand pour être reproduit en un seul cliché, il est filmé à partir de l'angle supérieur gauche, de gauche à droite, et de haut en bas, en prenant le nombre d'images nécessaire. Les diagrammes suivants illustrent la méthode.

TOW

T.

THE COA

LIST 5

OF

TOWERS, BEACONS, BUOYS, STAKES,

AND

OTHER DAY-MARKS

IN

THE SEVENTH LIGHT-HOUSE DISTRICT:

EMBRACING

THE COAST OF FLORIDA, FROM JUPITER INLET TO EGMONT KEY, TAMPA BAY,
AND CEDAR KEYS, INCLUSIVE; TOGETHER WITH ALL THE
ADJACENT ISLANDS, KEYS, AND REEFS.

CORRECTED TO MAY, 1871.

CHARLES A. BABCOCK, COMMANDER U. S. NAVY,
Light-house Inspector Seventh District; Office, Key West, Florida.

WASHINGTON:
GOVERNMENT PRINTING OFFICE.
1871.

CHAPT
remove, or
other person
exceeding o
Approv

By the
JA

In conf
manner of co
of the United

1. In ap
the STARBOARD

2. In ap
the PORT side

3. Buoy
ways on eit

4. Buoy
must be pass

5. All ot
to mark parti

6. Perch
ating on whi

7. No de

8. Lists
in each harbor

9. Red b
on Coast Surv

Coast Survey
on Coast Surv

By order

TREASURY DE
Office L

STATE LAWS, &c.

AN ACT passed by the Legislature of the State of Florida for the protection of beacons and buoys.

CHAPTER II. SECTION 1. If any person or persons shall, maliciously or without authority, cut down, remove, or destroy any beacon or beacons, buoy or buoys, erected by any commission of pilotage, or by any other person or persons duly authorized for that purpose, he, she, or they shall, on conviction, be fined not exceeding one thousand dollars, or whipped not exceeding thirty-nine stripes, at the discretion of the jury.

Approved July 28, 1847.

W. D. MOSELY,
Governor of Florida.

By the Governor:

JAMES T. ARCHER,
Secretary of State.

DIRECTIONS.

In conformity to the terms of the act of Congress, approved September 28, 1850, prescribing the manner of coloring and numbering the buoys along the coasts and in the bays, sounds, rivers, and harbors of the United States, the following order must be observed, viz:

1. In approaching the channel, &c., from seaward, RED BUOYS, with EVEN NUMBERS, will be found on the STARBOARD side of the channel, and must be left on the STARBOARD hand in passing in.
2. In approaching the channel, &c., from seaward, BLACK BUOYS, with ODD NUMBERS, will be found on the PORT side of the channel, and must be left on the PORT hand in passing in.
3. Buoys painted with RED AND BLACK HORIZONTAL STRIPES will be found on obstructions, with channel-ways on either side of them, and may be left on either hand in passing in.
4. Buoys painted with WHITE AND BLACK PERPENDICULAR STRIPES will be found in MIDCHANNEL, and must be passed close-to to avoid danger.
5. All other distinguishing marks to buoys will be in addition to the foregoing, and may be employed to mark particular spots; a particular description of which will be given in the printed list of buoys.
6. Perches with balls, cages, &c., will, when placed, be at turning-points, the color and number indicating on which side they shall be passed.
7. No deviation from the foregoing directions will be permitted.
8. Lists of beacons and buoys, &c., will be published from time to time, showing their relative positions in each harbor, channel, bay, sound, &c., and a particular description of each given in the proper column.
9. Red buoys are marked on Coast Survey Charts, R, Nos. 2, 4, 6, 8, &c.; black buoys are marked on Coast Survey Charts, B, Nos. 1, 3, 5, 7, &c.; red and black horizontally striped buoys are marked on Coast Survey Charts, H. S., without numbers; white and black perpendicularly striped buoys are marked on Coast Survey Charts, P. S., without numbers.

By order of the Light-house Board:

TREASURY DEPARTMENT,

Office Light-house Board, Washington, D. C.

NOTICE TO MARINERS.

Mariners and others interested in commerce and the preservation of life and property from loss by shipwreck on our coasts, are earnestly requested to give prompt information to the Inspectors, Engineers, or Superintendents of Lights, or to this Board, by direct communication, of cases in which lights are not lighted punctually at sunset and extinguished at sunrise, or in which they are not properly attended to during the night, or in which light-vessels and buoys are out of position, and of all cases in which the published instructions from this Board are not strictly executed, that the Board may, with as little delay as possible, apply the proper remedy, and prevent neglect of duty in matters connected with the lights, beacons, and buoys of the United States.

OFFICE LIGHT-HOUSE BOARD, WASHINGTON.

Masters of vessels and others are forbidden to make their vessels fast to buoys or stakes, or to use them for warping purposes. These aids are provided for the purpose of rendering navigation safe and easy to all mariners, and must not, therefore, be wilfully moved, injured, or interfered with by any one.

FOG-SIGNALS ON BOARD UNITED STATES LIGHT-VESSELS.

Notice is hereby given that, on and after the first day of January, 1859, vessels approaching or passing light-vessels of the United States, in foggy or thick weather, will be warned of their proximity by the alternate ringing of a BELL and sounding of a FOG-HORN on board of the light-vessels, at intervals not exceeding five minutes.

TREASURY DEPARTMENT,

Office Light-house Board, Washington, D. C., October 5, 1858.

NOTE.

The day-beacons along the Florida Reefs, from FOWEY ROCKS, "P" to EASTERN SAMBO, "A," (between Cape Florida and Sand Key Light-houses,) are composed each of an iron shaft, thirty feet in height, erected on iron-pile foundations, distinguished by a vane, upon which one of the letters of the alphabet is shown in their regular order from "P" to "A" to Eastern Sambo inclusive, (from northward and eastward to southward and westward,) and from Eastern Sambo west channel into Key West by other letters of the alphabet, and above it is a lattice-work hoop-iron cylinder or barrel.

The colors (white, black, and red) are used in painting each of these beacons to render them as striking to the eye of the mariner as possible, and so combined that no two adjacent beacons have the same colors upon like parts. Masters of vessels may ascertain their positions in latitude and longitude by referring to the list for these beacons as they are passed.

These beacons are placed on the most projecting and dangerous points on the Florida Reefs, and are, in general, from four to six miles from the seaward shores of the Florida Keys, and within half a mile, in every case, of the edge of the Gulf stream. The depth of water where these beacons stand does not exceed four feet at low tide.

These beacons may be approached from seaward within a few hundred yards; but it would be prudent at all times (and especially in light winds, or in threatening or bad weather) to give them a good berth.

In moderate weather, it frequently happens, (especially after easterly gales,) that the force and direction of the Gulf stream sets across the reefs, carrying the vessels imperceptibly into danger, although the course steered would, if made good, carry them well outside of all danger.

When one of these beacons is discovered to the eastward of a vessel, the master may be certain that he is between the Reefs and Keys, and most likely surrounded by shoals and dangerous rocks or reefs.

The Turtle Harbor and Coffin's Patches beacons differ in appearance from the other described beacons with letters of the alphabet, and will be found fully described in their proper places on the list.

Towers, be
by ves
Ligh

Name of stat
locality of

LEPITHA ISLET
HOUSE.

North end of F
Reefs Buoy.

Mid-channel Bu

Mid-channel Bu

CAPE FLORIDA L
HOUSE.

Fowey Rocks L
con, "P."

Triumph Reef L
con, "O."

Long Reef Bea
"N."

Ajax Reef Bea
"M."

Pacific Reef Bea
"L."

Turtle Reef Bea
"R."

Turtle Harbor B
con.

Towers, beacons, buoys, spindles, and all other aids to navigation, arranged in regular order as they are passed by vessels entering from the northward and eastward, to mark the Florida Coast and Reefs from Jupiter Light-house to the Gulf at Dry Tortugas, Florida.

Name of station or locality of aid.	Color of aid.	Number, if a buoy.	Description of mark or aid.	Bearings of prominent objects from buoy, spindle, or beacon, by compass.	Depth at low water of spring tides, in feet, of buoy.	General remarks, sailing directions, and other information necessary or useful to mariners.
JUPITER INLET LIGHT-HOUSE.	Red		F. V. F. light. Tower of brick of natural color, and the lantern brown; 116 ft. in height.	This tower is between Jupiter inlet and Gilbert's bar, Florida.		This is a first order light, fixed varied by flashes. A fixed white light, varied every 45 seconds by a brilliant flash of 74 seconds duration. The coast is clear from this light to the entrance of the Florida Pass, north of Key Biscayne Cape Florida.
North end of Florida Reef-Buoy.	Red	2	1st class nun.	Cape Florida light-house, S.W. by S. 4 S. Northeastern point of Virginia Key, N.W. by W. 1 W. Northeastern end of Key Biscayne, W. by S. 1 S.	17	This buoy is placed to the north of the 16-foot spot marked on the chart, and close to it. It marks the first fowl ground in approaching the eastern and northern entrance to the Florida Pass, distant 21 miles about due east from the southern end of Virginia Key and the northern side of the entrance to "Bear's Cut." Vessels bound through the Pass, going south, will leave this buoy on the starboard hand. Small vessels bound into Hawk channel will leave it on the port hand, and steer south for the midchannel buoy, (perpendicular stripes,) 24 miles distant.
Mid-channel Buoy.	Perpendicular stripes.		2d class can.	Cape Florida light-house, S.W. 1 W. Red buoy, No. 2, N. by E. Key Biscayne, N. Eastern Point, N.W. 1 W.	21	This buoy is placed near the midchannel line leading into Hawk channel, with fowl ground with 16, 17, and 18 feet of water over it to the eastward, and may be passed by light draught vessels on either hand; but vessels bound outside the reef must give it a berth to starboard.
Mid-channel Buoy.	Perpendicular stripes.		2d class can.	Cape Florida light-house, N.W. by W. Northeastern point of Virginia Key, N.W. by E. Key Biscayne, N. Eastern Point, N. N.W. Fowey Rocks beacon, "P," S. S.E. 1 E.	21	This buoy is placed near the midchannel line leading into the Hawk channel, to the southward and westward of fowl ground, with 15 feet of water over it. Vessels passing outside of the reefs should not approach this buoy nearer than a mile to starboard, if bound south.
Cape Florida Light-house.	White		Height of tower 35 feet; fixed white light of the 2d order.	This tower is on the southern point of Key Biscayne, Florida.		There is a cluster of tall coconut trees near the keeper's dwelling, which serves as a good day distinguishing mark for the light-station.
Fowey Rocks Beacon, "P."	Cylinder white, shaft and vane black.		Beacon, letter "P," painted red; hoop-iron lattice-work; cylinder white, shaft and vane black.	Cape Florida light-house, N.W. 1 N. Soldier Key, W.	1	This beacon is placed near the edge of the Gulf stream, latitude 25° 35' 23" north; longitude 80° 03' 51" west of Greenwich.
Triumph Reef Beacon, "O."	Cylinder red, shaft and vane white.		Beacon, letter "O," painted black; hoop-iron lattice-work; cylinder red, shaft and vane white.	Elliot's Key, No. 1, S. 82° 30' 26" W., (true). Soldier Key, N. 21° 04' 14" W., (true).		This beacon is placed on the seaward edge of Triumph reef, in 25° 28' 37" north latitude, and 80° 06' 50" west longitude.
Long Reef Beacon, "N."	Cylinder black, shaft and vane red.		Beacon, letter "N," painted white; hoop-iron lattice-work; cylinder black, shaft and vane red.	Elliot's Key, No. 1, N. 52° 15' 21" W., (true). Soldier Key, N. 13° 53' 51" W., (true).		This beacon is placed not far from the seaward edge of the reef, in latitude 25° 26' 45" north; longitude 80° 07' 21" west.
Ajax Reef Beacon, "M."	Cylinder white, shaft and vane black.		Beacon, letter "M," painted red; hoop-iron lattice-work; cylinder white, shaft and vane black.	Elliot's Key, No. 2, S. 8. 72° 35' 43" E., (true). Elliot's Key, No. 1, S. 20° 06' 05" E., (true).		This beacon is placed on the seaward edge of the reef, in latitude 25° 24' 09" north; longitude 80° 07' 59" west.
Pacific Reef Beacon, "L."	Cylinder red, shaft and vane white.		Beacon, letter "L," painted black; hoop-iron lattice-work; cylinder red, shaft and vane white.	Old Rhodes Key, S. 76° 29' 51" W., (true). Elliot's Key, No. 1, N. 15° 05' 15" W., (true).		This beacon is placed on Pacific Reef, 54 miles from Old Rhodes Key, and 7.140 nautical miles from Elliot's Key, No. 1, in 25° 22' 13" north latitude, and 80° 08' 30" west longitude.
Turtle Reef Beacon, "K."	Cylinder black, shaft and vane red.		Beacon, letter "K," painted white; hoop-iron lattice-work; cylinder black, shaft and vane red.	Old Rhodes Key, S. 22° 20' 12" E., (true). Casar's Creek bank, S. 06° 28' 07" W., (true).		This beacon is placed near the northern extremity of Turtle reef and the southern side of the entrance to Turtle harbor, distant from Old Rhodes Key 4.440 nautical miles, and from Casar's creek 6.130 nautical miles. It is in 25° 16' 52" north latitude, and 80° 12' 31" west longitude.
Turtle Harbor Beacon.	Black, 36 ft. high.		An iron shaft, 6 inches in diameter, 36 feet in height, surmounted at the height of 24 ft. above the water by two ellipses, at right angles, made of open lattice-work, 8 feet by 5 feet, and at the top by two circles of lattice-work, 3 feet in diameter. The whole presents the appearance of two balls, respectively, 8 feet and 3 feet in diameter; and the whole structure painted black.	Turtle Reef beacon, W. 1 N., (magnetic). Carysfort Reef light-house, S. S.E., (magnetic).		This beacon is placed on Turtle Harbor shoals, inside of Turtle reef, and serves to mark the entrance to Turtle harbor.

Towers, beacons, buoys, spindles, and all other aids to navigation, arranged in regular order as they are passed by vessels entering from the northward and eastward, to mark the Florida Coast and Reefs from Jupiter Light-house to the Gulf at Dry Tortugas, Florida—Continued.

Name of station or locality of aid.	Color of aid.	Description of mark or aid.	Bearings of prominent objects from buoy, spindle, or beacon, by compass.	Depth at low water of spring tides, in feet, of buoy.	General remarks, sailing directions, and other information necessary or useful to mariners.	Name of station or locality of aid.
CRYSFORT REEF LIGHT-HOUSE.	Dark brown.	Iron-pile light-house structure; the tower and keeper's dwelling painted brown. The dwelling is octagonal in shape. 1st order revolving light every 30 seconds, at an elevation of 106 feet above the mean level of the sea.			This light-house is placed close to the seaward edge of the reef, in 23° 43' 15" north latitude, and 80° 12' 45" west longitude.	DRY BANK LIGHT-HOUSE.
Elbow Reef Beacon, "A."	Cylinder white, shaft and vane black.	Beacon, letter "A," painted red; hoop-iron lattice-work; cylinder white, shaft and vane black.	Grecian Shoal beacon, S. 33° E. 10' W., (true). Crysfort Reef light-house, N. 20° 29' 35" E., (true).		This beacon is placed on the seaward edge of the reef, distant 2.4-10 nautical miles from the Grecian Shoal beacon, and 5.4-10 nautical miles from Crysfort light-house, in 23° 08' 32" north latitude, and 80° 15' 40" west longitude. This shoal is of small area, being about one mile long, with an average breadth of about one-fourth of a mile. It lies about 1.4 mile outside of the general line of the reefs, detached, with deep water between it and the main reef of Grecian shoal.	LONG KEY BEACON. AMERICAN SHOAL BEACON, "A."
Grecian Shoal Beacon, "H."	Cylinder red, shaft and vane white.	Beacon, letter "H," painted black; hoop-iron lattice-work; cylinder red, shaft and vane white.	Sound Point, S. 45° 58' 23" E., (true). Basire Bank, S. 21° 24' 32" W., (true).		This beacon is on the seaward edge of the Grecian shoal, distant 3.9-10 nautical miles from Sound Point and 5.3-10 nautical miles from Basire Hill bank, in 23° 07' 22" north latitude, and 80° 17' 57" west longitude. The shoal is on the seaward extremity of the main tread of the reefs, with foul water outside of it to a little more than a mile to seaward of it, and therefore should not be approached by large vessels nearer than two miles.	MARYLAND SHOAL BEACON, "A. 2." EASTERN SAMBOURON BEACON, "A."
French Reef Beacon, "G."	Cylinder black, shaft and vane red.	Beacon, letter "G," painted red; hoop-iron lattice-work; cylinder black, shaft and vane red.	Lower Sound Point, S. 32° 33' 53" E., (true). Point Willie, S. 10° 30' 17" E., (true).		This beacon is placed on French reef, 5 nautical miles from Lower Sound Point and 6.2-10 nautical miles from Point Willie, in 23° 22' 06" north latitude, and 80° 21' 05" west longitude. It is close on the edge of the reef, with deep water close to it.	WESTERN SAMBOURON BEACON, "Z." EAST CHANNEL SHOAL BUOY.
Pickle's Reef Beacon, "K."	Cylinder white, shaft and vane black.	Beacon, letter "K," painted red; hoop-iron lattice-work; cylinder white, shaft and vane black.	Point Charles, S. 16° 57' 43" E., (true). Lower Sound Point, S. 5° 34' 30" W., (true).		This beacon is placed on the seaward edge of Pickle's reef, 5.25 nautical miles from Point Charles, and 7 nautical miles from Lower Sound Point, in 21° 50' 22" north latitude, and 80° 23' 52" west longitude. It is close to the seaward edge of the reef, with a clear coast and deep water close up to it. From a position abreast of Pickle's Reef beacon, and one mile distant, a vessel may run safely by the lead, in a S.W. by W. compass course, and carry not less than 4 fathoms water until 3 fathoms are struck to the southward and westward of the foul ground (12 and 14 feet water) of Tennessee reef; but this should only be attempted under steam and in daylight, to avoid the strength of the current.	POINT OF REEF BUOY.
Catch Reef Beacon, "E."	Cylinder red, shaft and vane white.	Beacon, letter "E," painted black; hoop-iron lattice-work; cylinder red, shaft and vane white.	Rodriguez Key, S. 40° 30' W., (magnetic). Tavernier Key, S. 43° 30' E., (magnetic).		This beacon is placed on Catch reef, in 23° 50' 30" north latitude, and 80° 27' 50" west longitude. It is on the seaward edge of the reef, with hold water close to it.	MAIN CHANNEL TRANCE BUOY.
Crocker's Reef Beacon, "D."	Cylinder black, shaft and vane red.	Beacon, letter "D," painted white; hoop-iron lattice-work; cylinder black, shaft and vane red.	Snake Creek Point, S. 30° 15' E., (magnetic).		This beacon is placed on Crocker's reef, about 4 miles from Snake Creek Point, in 21° 41' 08" north latitude, and 80° 38' 08" west longitude. The coast is clear, with hold water close up to it.	KEY WEST LIGHT-HOUSE, (HARBOR LIGHT).
Alligator Reef Beacon, "C." (Light-house building in place of Beacon.)	Cylinder white, shaft and vane black.	Beacon, letter "C," painted red; hoop-iron lattice-work; cylinder white, shaft and vane black.	Indian Key, S. 65° 30' E., (magnetic); distant 5 miles.		This beacon is placed on Alligator reef, in 21° 40' 06" north latitude, and 80° 38' 08" west longitude. This reef is at the seaward extremity (southern and westward) of the banks and shoals making out from Indian Key, Tea-table Key, and Upper Mattacombie, and where they terminate. An iron screw-pile light-house is under construction for this point.	SIXE KEY LIGHT-HOUSE.
Tennessee Reef Beacon, "C."		Building.			This reef has no less than 13 feet of water over it. There is a shoal spot with 13 and 14 feet of water over it, bearing S. by E. 1 E. from the eastern extremity of Long Key, and distant from that point 4 nautical miles.	
Coffin's Patches Beacon.	Black.	An iron shaft, 6 inches in diameter, 40 feet high, with 2 ellipses at right angles to each other 25 feet above the water. These ellipses are made of open lattice-work, 8 feet by 5, presenting the appearance of a ball. At 23 feet from the water there is an open lattice cross, with arms 9 inches broad, extending 3 ft. from the shaft. On the top there is a ball, 15 lbs. in diameter; and the entire structure is painted black.	Dry Bank light-house, S. 47° 30' W., (true).		This beacon is placed on Coffin's Patches, near the seaward edge of the reef, and bears about south from Duck Key. The coast from one mile outside of Coffin's Patches beacon to a point one mile outside Dry Bank light-house is clear, with plenty of water.	WESTERN DRY ROCK BEACON, "Y." REBECCA SHOAL BUOY. REBECCA SHOAL BEACON.

BEACONS AND BUOYS.

Towers, beacons, buoys, spinules, and all other aids to navigation, arranged in regular order as they are passed by vessels entering from the northward and eastward, to mark the Florida coast and Reefs from Jupiter Light-house to the Gulf at Dry Tortugas, Florida—Continued.

Name of station or locality of aid.	Color of aid.	Number, if a buoy.	Description of mark or aid.	Bearings of prominent objects from buoy, spinule, or beacon, by compass.	Depth at low water of spring tides, in feet, of buoy.	General remarks, sailing directions, and other information necessary or useful to mariners.
DRY BANK LIGHT-HOUSE.	Dark.		Iron-pile structure, off Dry Bank, Sombrero Key, and near Delta Shoal. An open frame-work of iron, and erected a dwelling for the keepers. Height of tower, 14 feet above water. First order fixed light.			This light-house is placed on "Sombrero" shoals, off Dry Bank, Sombrero Key, about 11 miles to the westward of "Delta" shoal, and 10 miles to the westward of the centre of "Poffin's Patches," in 24° 37' 30" N. latitude, and 81° 06' 45" W. longitude. The coast to the westward of Dry Bank light-house is clear for about 12 nautical miles, and the shoals making out from Looe Key are washed in going westward.
Looe Key Beacon.				Building.		
American Shoal Beacon, "B."	Cylinder red shaft and vane white.		Beacon, letter "B," painted black; hoop-iron lattice-work; cylinder red, shaft and vane white.	Loggerhead Key, N. 22° 00' E. (true). Eastern Samba beacon, S. 76° 35' 59" W. (true).		This beacon is placed on the seaward edge of the American shoal, about 6 nautical miles from Loggerhead Key, and 8 nautical miles from the Eastern Samba beacon, in 24° 21' 21" N. latitude, and 81° 21' 00" W. longitude. The coast is clear outside this shoal, and the water bold to within from 1 to 1 mile. The western end of Maryland shoal, with 10 feet water over it, is on the general trend of these reefs and shoals, distant 3 nautical miles.
Maryland Shoal Beacon, "A."			A 2.	Building.		
Eastern Samba Beacon, "A."	Cylinder black, shaft and vane red.		Beacon, letter "A," painted white; hoop-iron lattice-work; cylinder black, shaft and vane red.	Geiger's house, N. 32° 26' 21" E. (true). South Saddle hills, N. 132° 13' 31" W. (true).		This beacon is placed on the Eastern Samba, near the seaward side, with Speculator's shoal 1 mile to the eastward, Pelican shoal 2 miles to the eastward, and Western Samba 3 miles to the westward, in 24° 23' 32" N. latitude, and 81° 23' 52" W. longitude.
Western Samba Beacon, "Z."			Z.	Building.		
East Channel Shoal Buoy.	Red.	2	1st class can.	Key West light-house, NW. 1 N. Sand Key light-house, W. by S. 1 S.	21	This buoy is placed just to the westward of the 16-foot spot of the shoal forming the eastern side of the entrance by the East channel leading into Key West harbor, and marks the seaward extremity of the shoal to the westward of the Western Samba shoals. To be left on the starboard hand going to the westward, and also for entering by the Key West east channel.
Point of Reef Buoy.	Red.	1	1st class can.	Sand Key light-house, W. by Key West light-house, N. by W. 1 W.	24	This buoy is placed just to the westward of the 18-foot spot, and the eastern side of the entrance to Key West by that passage, as shown by the chart, 13 miles to the westward of the East Channel Shoal buoy, and 14 miles to the eastward of the Main Channel Entrance buoy. (perpendicular stripes.) To be left on the starboard hand going westward, and also in entering Key West harbor by that passage.
Main Channel Entrance Buoy.	Perpendicular stripes.		1st class min.	Sand Key light-house, W. by S. 1 S. Key West light-house, N. 1 W.	27	This buoy is placed in middle-buoy of the main entrance into Key West harbor. Vessels passing to the westward should give it a good berth to starboard. Vessels bound into Key West by the main ship channel must pass it close to on either hand, and steer S. 1 W., with Key West light-house a little open on the port bow. (See directions for going into Key West harbor.)
Key West Light-house, (Harbor Light.)	White.		Light-house tower, to the southward and eastward of the town of Key West. Fixed white light, 3d order, 50 feet high.			This light-house is in the town of Key West, on the southward and eastward side, 5 nautical miles from the Entrance buoy of the main channel, and serves to distinguish the place, and as a leading mark to the different passages and channels into the harbor; in 24° 32' 58" N. latitude, and 81° 48' 02" W. longitude.
Sand Key Light-house.	Dark.		Iron pile light-house, painted a dark color, and the lantern white. The light is fixed varied by flashes, showing for one minute a bright white light, with a brilliant flash of 10" duration every alternate minute, which is preceded and followed by partial eclipses of 25" duration.	This light-house building is on a small sand and shell island on the seaward edge of the reef 7 1/2 miles from Key West light-house.		An iron-pile structure; open-work below and above the keeper's apartments and store-rooms surrounding an iron cylinder, upon which the lantern and apparatus for lighting are placed. The light is of the 1st order, and is elevated 110 feet above the mean level of the sea.
Western Dry Rocks Beacon, "Y."			Y.	Building.		Westward of Sand Key light-house, and marks entrance to the West channel into Key West.
Rebecca Shoal Buoy.	Red.	6	1st class min.	Dry Tortugas light-house, W. 1 N.	13	This buoy is placed about one-third south from the southern and eastern points of the shoal, and to the westward of the 15-foot spot on the Isaac shoal, distant about 1 nautical mile.
Rebecca Shoal Beacon.				Building.		

Towers, beacons, buoys, spindles, and all other aids to navigation, arranged in regular order as they are passed by vessels entering from the northward and eastward, to mark the Florida Coast and Reefs from Jupiter Light-house to the Gulf at Dry Tortugas, Florida—Continued.

Name of station or locality of aid.	Color of aid.	Number, if a buoy.	Description of mark or aid.	Bearings of prominent objects from buoy, spindle, or beacon, by compass.	Depth at low water of spring tides, in feet, of buoy.	General remarks, sailing directions, and other information necessary or useful to mariners.
Tortugas Harbor Entrance Buoy, (East side.)	Red	2	2d class min.	Garden Key light-house, W. 1 N.	18	This buoy marks the western point of the shoal on the eastern side of the entrance to Dry Tortugas harbor, with 12 and 15 fathoms close to it.
Tortugas Harbor Entrance Buoy, (West side.)	Black	1	2d class can.	Dry Tortugas light-house, SW. by W. Dry Tortugas Harbor light-house, N. by W.	18	This buoy is placed at the southeast point of the shoal making out from Fort Jefferson, and marks the western side of the passage into Dry Tortugas harbor.
DRY TORTUGAS (FORT JEFFERSON) HARBOR LIGHT-HOUSE.	White		White tower inside of Fort Jefferson, Garden Key, Dry Tortugas. Fixed white light, 4th order, 70 feet above the level of the sea.			This light house is in latitude 21° 37' 47" N., and in longitude 82° 52' 53" W.
Fort Jefferson Sea-Buoy.	Red	8	1st class min.	Dry Tortugas light-house, S. W. Dry Tortugas Harbor light-house, N. NE. 1 E.	18	This buoy marks the southern extremity of the shoal making out from Fort Jefferson, Dry Tortugas, and the eastern side of the passage into Tortugas harbor between Loggerhead Key and the fort. There are but 10 feet water on the shoal at 21 nautical miles distant from the fort.
DRY TORTUGAS LIGHT-HOUSE, (LOGGER-HEAD KEY.)	White and black.		Tower, 150 feet high; lower half painted white, and the upper half black. Keeper's dwelling placed a little to the southward of the tower. Fixed white light, of the 1st order.	This light-house tower is on Loggerhead Key, the westernmost of the Dry Tortugas group. It is nearly 1 mile long N.E. and S.W., and 700 feet broad, bordered all around by bushes.		This light-house is in latitude 21° - 3' 12" N., and in longitude 82° 57' 53" W.

Entering from sea, at Cape Florida, to mark the Entrance to and the Hawk Channel and Obstructions inside the Florida Reefs, to Key West.

North end of Florida Reefs Buoy.	Red	2	1st class min.	Cape Florida light-house, S.W. by S. 1 S. Northeastern point of Virginia Key, NW. by W. 1 W. Northeastern end of Key Biscayne, W. by S. 1 S.	17	This buoy is placed to the north of the 16-foot spot marked on the chart, and close to it. It marks the first foul ground in approaching the northern and eastern entrance to the Florida Pass, distant 2½ miles about due east from the southern end of Virginia Key, and the northern side of the entrance to "Bears Cut." Vessels bound into Hawk channel, inside the outer reefs, will leave this buoy on the port hand and steer due south for first Midchannel (perpendicular stripes) buoy, distant 2½ miles.
Midchannel Buoy.	Perpendicular stripes.		3d class can.	Cape Florida light-house, S.W. 1 W. Red buoy, No. 2, N. by E. Northeastern point of Key Biscayne, NW. 1 W.	21	This buoy is placed near the midchannel line, (running north and south by compass,) leading into the Hawk channel, inside the outer reefs, with foul ground with 16, 17, and 18 feet water over it to the eastward.
CAPE FLORIDA LIGHT-HOUSE.	White		Height of light, (tower,) 95 feet; fixed white light of the 2d order.	This tower is on the south point of Key Biscayne, Florida.		There is a cluster of tall cocoa-nut trees near the light keeper's dwelling, which serves as a good day distinguishing mark for the light-station.
Midchannel Buoy.	Perpendicular stripes.		2d class can.	Cape Florida light-house, S.W. by W. Soldier Key, S.W. by S. Fowey Rocks beacon, "P," S. SE. 1 E.	20	This buoy is placed near the Midchannel line, (running north and south by compass,) leading into the Hawk channel, inside the outer reefs, and to the southward and westward of foul ground, with 15 feet water over it.
Fowey Rocks, (inside) Buoy.	Black	1	3d class min.	Cape Florida light-house, N.W. by N. 1 N. Soldier Key W. 1 S. Fowey Rocks beacon, "P," E. 1 S.	20	This buoy is placed nearly due west of the Fowey rocks, and on the port side of the narrow entrance to the channel leading to the westward, and thence north to the anchorage at Cape Florida light-house.

Entering from sea, at Cape Florida, to go inside to the Light-house Anchorage and into Key Biscayne Bay.

Soldier Key Buoy.	Perpendicular stripes.		3d class can.	Cape Florida light-house, N. W. 1 W. Bowles buoy, (north,) S. by W. Soldier Key, W. 1 S. Fowey Rocks beacon, "P," E. 1 N.	19	This buoy marks the midchannel leading to Soldier Key, and lies ½ mile nearly due west from Fowey Rocks (inside) buoy. Vessels bound inside the reefs to the southward, will leave it on the starboard hand; and vessels going to Soldier Key and to the anchorage inside of Key Biscayne, may pass it on either hand.
Coral Bunches Buoy.	Black	1	3d class min.	Cape Florida light-house, N. 1 W. Fowey Rocks buoy, No. 1, W. by S. Fowey Rocks beacon, "P," E. 1 N.	11	This buoy is placed outside of the Coral Bunches, and near Soldier Key. It marks the point to turn to the north for the light-house and Key Biscayne bay, and should be left on the port hand in going north.

Towers, beacons, buoys, spindles, and all other aids to navigation, arranged in regular order as they are passed by vessels entering from sea, to go inside to the Light-house Anchorage and into Key Biscayne Bay—
Continued.

Name of station or locality of aid.	Color of aid.	Number, if a buoy.	Description of mark or aid.	Bearings of prominent objects from buoy, spindle, or beacon, by compass.	Depth at low water of spring tides, in feet of buoy.	General remarks, sailing directions, and other information necessary or useful to mariners.
Cape Florida Shoals (inside)	Red	2	3d class can.	Coral Bunches buoy, S. Cape Florida light-house, N.W. 1/4 N.	9	This buoy marks the turning-point to the northward and westward to go to the light-house and into Key Biscayne bay, and must be left on the starboard hand.

Hawk Channel, inside the Reefs, continued from the Fowey Reefs Buoy, No. 1, going South and West.

Bache's Shoal Buoy	Red	2	2d class nun	Soldier Key buoy, (P. S.) Sands Cut, S.W. by W. North point of Sand Key, W. 1/4 S. Fowey Reefs beacon, "P." N. 6y E. 1/4 E.	30	This buoy marks the southern end of the shoals on the starboard side of the entrance to Legare anchorage, and must be left on the starboard hand by vessels going into that anchorage, and given a wide berth by vessels going through the upper channel.
Middle-channel Buoy, off Bowler's Bank, (north)	Perpendicular stripes		3d class nun	North point of Sand Key, W. 1/4 S. Black buoy, No. 3, S. 1/4 E. Bache's Shoal buoy, Red, No. 2, E. by N. 1/4 N.	15	This buoy is placed at the point for turning from a S. 1/4 W. to a S. 1/4 E. course, at the end of Bowler's bank, and may be passed close-to on either hand.
Buoy off Bowler's Bank, (west, and east side of Channel)	Black	3	3d class can	Middle-channel buoy, (P. S.) off Bowler's bank, (north), N. 1/4 W. Sands Cut, W. 1/4 S. North point of Sands Key, N.W. by W. 1/4 W.	15	This buoy is placed at the turning point from S. 1/4 E. to a S. 8y W. 1/4 W. course, and must be left on the port hand close-to.

Entering from sea, at Cape Florida, to mark the Entrance to and Channel and Obstructions inside the Florida Reefs, from Jupiter Light-house to the Gulf at Dry Tortugas, Florida.

Middle-channel Buoy, off Elliott's Key.	Perpendicular stripes		3d class can.	Long Reef beacon, "N." S.E. 1/4 E. Triumph Reef beacon, "O." E. 1/4 S. Margot Fish Shoal buoy, S. 1/4 W.	45	Off eastern end of Elliott's Key, and distant 1 mile, Triumph Reef beacon, 2 1/2 miles E. 1/4 S. in mid-channel, at the point where the course must be changed to S. 1/4 W. for the next Middle-channel buoy, and to reach Margot Fish shoal, marked by Red buoy, No. 1.
Triumph Reef Beacon, "O."	Cylinder red shaft and vane white.			Elliott's Key, No. 1, N. 82° 30' 28" W., (true.) Soldier Key, N. 21° 01' 11" W., (true.)		This beacon is placed on the seaward edge of Triumph reef, in 25° 28' 37" N. latitude, and 80° 16' 50" W. longitude.
Margot Fish Shoal Buoy.	Red	1	2d class nun.	Long Reef beacon, "N." E. 1/4 N. Triumph Reef beacon, "O." N.E. 1/4 E. Sands Cut, N. 1/4 W.	40	This buoy is placed about due east from Margot Fish shoal, and must be left on the starboard hand in going to the southward and westward.
Long Reef Beacon, N.	Cylinder black, shaft and vane red.			Elliott's Key, No. 1, N. 52° 15' 24" W., (true.) Soldier Key, N. 13° 53' 51" W., (true.)		This beacon is placed not far from the seaward edge of the reefs, in 25° 26' 15" N. latitude, and 80° 07' 21" W. longitude.
Middle-channel Buoy.	Perpendicular stripes		3d class can.	Ajax Reef beacon, "M." E. 8y E. Long Reef beacon, "N." N.E. by E. 1/4 E. The Little Reef beacon, "L." S.E. 1/4 S. North point of Sands Key, N. by W. 1/4 W.	15	In mid-channel, at the point for changing course from S. 1/4 W. to S. by W. 1/4 W.
Ajax Reef Beacon, "M."	Cylinder white, shaft and vane black.			Elliott's Key No. 2, S. 79° 35' 43" E., (true.) Elliott's Key No. 1, S. 26° 06' 33" E., (true.)		This beacon is placed on the seaward edge of this reef, in latitude 25° 21' 09" north, longitude 80° 07' 50" west.
Cesar's Creek Bank Buoy.	Red	6	2d class nun.	Ajax Reef beacon "M." E. N.E. Pacific Reef beacon "L." E. by S. Turtle Reef beacon "K." S. 1/4 W. Cary-Gort light-house, S. 1/4 W.	8	This bank, of which this buoy is placed, extends out from the land in an easterly direction 2 miles. The middle-channel buoy passes about 1/4 of a mile to the eastward of this buoy.
Pacific Reef Beacon, "L."	Cylinder red, shaft and vane white.			Old Rhodes Key, S. 76° 29' 51" W., (true.) Elliott's Key No. 1, N. 15° 45' 15" W., (true.)		This beacon is placed on Pacific Reef, 3 1/2 miles from Old Rhodes Key, and 7 1/2 in nautical miles from Elliott's Key No. 1, in 25° 22' 13" north latitude, and 80° 08' 30" west longitude.

Towers, beacons, buoys, spindles, and all other aids to navigation, arranged in regular order as they are passed by vessels entering from sea at Cape Florida, to mark the Entrance to and Channel and Obstructions inside the Florida Reefs, from Jupiter Light-house to the Gulf at Dry Tortugas, Florida—Continued.

Name of station or locality of aid.	Color of aid.	Number, if in buoy.	Description of mark or aid.	Bearings of prominent objects from buoy, spindle, or beacon, by compass.	Bearings of prominent objects from buoy, spindle, or beacon, by compass.	Depth of low water in fathoms, feet, or buoy.	General remarks, sailing directions, and other information necessary or useful to mariners.
Old Rhodes Bank Buoy.	Red	8	24 class mm	Turtle Reef beacon "K," S. 8. 1 E. Carysfort light-house, S. 1 E. Pacific Reef beacon "L," NE. by E, 1 E.	9	This buoy is placed on the eastern end of old Rhodes bank, 1/2 mile from the mid-channel line, and 1 mile to the southward of the point, to change course from S. by W. 1/2 W., to S. SW. 1/2 W.	
Turtle Reef Beacon "K"	Cylinder black, shaft and vane red.		Beacon, letter "K" painted white; hoop-iron lattice-work; cylinder black, shaft and vane red.	Old Rhodes Key, S. 22° 10' 17" E., (true.) Cesar's Creek bank, S. 6° 28' 07" W., (true.)		This beacon is placed near the northern extremity of Turtle reef, and the southern side of the entrance to Turtle harbor; distant from Old Rhodes Key 4-10 nautical miles, and from Cesar's creek 6-10 nautical miles. It is in 25° 10' 52" north latitude, and 80° 12' 31" west longitude.	
Turtle Harbor Beacon.	Black, 36 feet high.		An iron shaft 6 inches in diameter, 36 feet in height, surmounted, at the height of 21 feet above the water, by two ellipses at right angles, made of open lattice-work, 8 feet by 7 feet, and at the top by two circles of lattice-work 3 feet in diameter. The whole presents the appearance of two balls, respectively 8 feet and 3 feet in diameter, and the whole structure painted black.	Turtle Reef beacon, W. 1 N., (magnetic.) Carysfort Reef light-house, S. 8 E., (magnetic.)		This beacon is placed on Turtle Harbor shoals, inside of Turtle reef and serves to mark the entrance to Turtle harbor.	
Mid-channel Buoy. (off Key Largo.)	Perpendicular stripes.		24 class can	Carysfort Reef light-house, SE. 1 S. Old Rhodes Bank buoy, S. SW. 1 W.	14	This buoy is placed in the mid-channel line, running S. SW. 1 W. from near Old Rhodes Bank buoy No. 8, red.	
CARYSFORT REEF LIGHT-HOUSE.	Dark brown		Iron pile light-house structure; the tower and keeper's dwelling painted brown; the dwelling is octagonal in shape; 1st order revolving light, every 30 seconds, at an elevation of 100 feet above the mean level of the sea.			This light-house is placed close to the seaward edge of the reef, in 25° 13' 15" north latitude, and 80° 12' 45" west longitude.	
Key Largo Bank Buoy.	Perpendicular stripes.		24 class can	Elbow beacon "J," S. 8 E. 1 S., Green Shoals beacon "H," S. 1 E.	10	This buoy is in mid-channel, on the line S. SW. 1 W. continued from the last mid-channel buoy.	
Elbow Reef Beacon "J"	Cylinder white, shaft and vane black.		Beacon, letter "J" painted red; hoop-iron lattice-work; cylinder white, shaft and vane black.	Green Shoals beacon "H," S. 8 E. 1 S., (true.) Carysfort Reef light-house, N. 25° 20' 57" E., (true.)		This beacon is placed on the seaward edge of the reef, distant 2-4-10 nautical miles from the Green Shoal beacon, and 5-10 nautical miles from Carysfort light-house, in 25° 08' 32" north latitude, and 80° 13' 40" west longitude. This shoal is of small area, being about 1/2 mile long, with an average breadth of about 1/2 of a mile; it lies about 1/2 mile outside of the general line of the reefs, detached, with deep water between it and the main reef of Green shoal.	
Green Shoal Beacon "H"	Cylinder black, shaft and vane white.		Beacon, letter "H" painted black; hoop-iron lattice-work; cylinder red, shaft and vane white.	Sound Point, S. 15° 58' 27" E., (true.) Bath Bank, S. 21° 21' 32" W., (true.)		This beacon is on the seaward edge of the Green shoals, distant 3-9-10 nautical miles from Sound Point, and 3-3-10 nautical miles from Bath Bank, in 25° 07' 22" north latitude, and 80° 17' 57" west longitude. This shoal is on the seaward extremity of the main trend of the reefs, with few water outside of it to a little more than a mile to seaward of it, and, therefore, should not be approached by large vessels nearer than 2 miles.	
Rocky Patch Buoy	Black	5	24 class can	Elbow beacon "J," E. 1 N. ... Green Shoal beacon "H," E. by S. 1 S. French Reef beacon "G," S. 1 W. Carysfort Reef light-house, NE. 1 E.	11	This buoy is near an 11-foot spot and a patch of rocks, and must be left on the port hand going to the southward and westward.	
French Reef Beacon "G"	Cylinder black, shaft and vane red.		Beacon, letter "G" painted red; hoop-iron lattice-work; cylinder black, shaft and vane red.	Lower Sound Point, S. 32° 23' 59" E., (true.) Point Willie, S. 10° 30' 07" E., (true.)		This beacon is placed on French reef, 5 nautical miles from Lower Sound Point, and 2-10 nautical miles from Point Willie, in 25° 02' 00" north latitude, and 80° 21' 05" west longitude. It is close on the outer edge of the reef, with deep water close to it.	
Four feet Shoal Buoy	Black	7	24 class can	Green Shoal beacon, "H," NE. by E. French Reef beacon, "G," S. 1 E. Pickles Reef beacon, "P," S. 1 W.	7	This buoy is placed near a 7-foot spot, and to the westward of the shoal, with 1 and 5 feet water over it. It must be left on the port hand.	

Towers, b
by ve
the R

Name of stat
locality of

Pickles Reef B
"P"

West end of Tr
Buoy.

Catch Reef Be
"C"

Crocker's Reef
con. "D."

Hen and Chic
Buoy.

Alligator Reef
con. "C." (re
replaced by
Iron Screw
light-house.)

Tennessee Reef
con.

Alligator Shoal

Long Key S
Buoy.

Mid-channel Buoy

East Turtle Sh
Buoy.

Turtle Shoal Buoy

John's Patches B
con.

Towers, beacons, buoys, spindles, and all other aids to navigation, arranged in regular order as they are passed by vessels entering from sea at Cape Florida, to mark the entrance to and Channel and Obstructions inside the Florida Keefs, from Jupiter Light-house to the Gulf at Dry Tortugas, Florida—Continued.

Name of station or locality of aid.	Color of aid.	Number, if a buoy.	Description of mark or aid.	Bearings of prominent objects from buoy, spindle, or beacon, by compass.	Depth at low water of spring tides, in feet of buoy.	General remarks, sailing directions, and other information necessary or useful to mariners.
Pickles Reef Beacon, "F."	Cylinder white, shaft and vane black.	Beacon, letter "F," painted red; hoop-iron lattice-work; cylinder white, shaft and vane black.	Point Charles, S. 16° 57' 43" E. (true). Lower Sound Point, S. 42° 31' 30" W. (true).	This beacon is placed on the seaward edge of Pickles reef, 5.25 nautical miles from Point Charles, and 7 nautical miles from Lower Sound Point, in 21° 50' 22" north latitude, and 80° 24' 55" west longitude.
West end of Triangle Buoy.	Black.....	9	24 class mm.	Pickles Reef beacon, "F," E. by S. 1 S. Coneh Reef beacon, "E," S. 4 E. Tavernier Key, W. SW 1 W. Rodriguez Key, N. 4 E.	17	This buoy is close to a spot at the western end of the Triangle shoals, with 5 feet water over it, and must be left to port. It is 2 miles to the eastward of Tavernier Key, and nearly 21 miles to the southward of Rodriguez Key.
Coneh Reef Beacon, "E."	Cylinder red, shaft and vane white.	Beacon, letter "E," painted black; hoop-iron lattice-work; cylinder red, shaft and vane white.	Rodriguez Key, S. 40° 30' W. (magnetic). Tavernier Key, S. 43° 30' E. (magnetic).	This beacon is placed on Coneh reef, in 24° 56' 30" north latitude, and 80° 27' 50" west longitude. It is on the seaward edge of the reef, with 10 feet water close to it.
Crocker's Reef Beacon, "D."	Cylinder black, shaft and vane red.	Beacon, letter "D," painted white; hoop-iron lattice-work; cylinder black, shaft and vane red.	Snake Creek Point, S. 30° 15' E. (magnetic).	This beacon is placed on Crocker's reef, about 4 miles from Snake Creek Point, in 21° 49' 38" north latitude, and 80° 38' 08" west longitude.
Hen and Chickens Buoy.	Red.....	10	24 class mm.	Crocker's Reef beacon, "D," S. E. 1 E. Alligator Reef beacon, "C," S. W. 2 S. Coneh Reef beacon, "E," E. by N. 1 N. North point of Mattacombe Key, W. 1 N.	16	This buoy is placed on the southern side, and near the shallowest part of the Hen and Chickens shoal, with deeper water close to it, and also to the southward. There is a channel with 11 feet water through it, between the Hen and Chickens and rocks, about half a mile to the northward.
Alligator Reef Beacon, "C." (To be replaced by an iron screw-pile light-house)	Cylinder white, shaft and vane black.	Beacon, letter "C," painted red; hoop-iron lattice-work; cylinder white, shaft and vane black.	Indian Key, S. 66° 30' E. (magnetic), distant 5 miles.	This beacon is placed on Alligator reef, in 21° 40' 08" north latitude, and 80° 38' 08" west longitude. This reef is at the seaward extremity (southward and westward) of the banks and shoals making out from Indian Key, Tea Table Key, and upper Mattacombe, and where they terminate.
Tennessee Reef Beacon.	Building.
Alligator Shoal Buoy.	Black.....	11	24 class mm.	Crocker's Reef beacon, "D," N. E. by E. 1 E. Alligator Reef beacon, "C," S. E. by E. 1 E. Centre of Indian Key, W., N. W. 1 W.	10	This buoy is near the western extremity of the shoal.
Long Key Shoal Buoy.	Red.....	12	24 class mm.	East end of Long Key, N. 1 E. Coneh Keys, W. 1 S. Indian Key, N. E.	12	This buoy lies off the south point of Long Key, distant 1 1/2 miles.
Mob Channel Buoy.	Perpendicular 11 x 1 1/2 stripes.	24 class mm.	Collin's Patches beacon, S. W. 1 S. East point of Duck Key, N. W. 1 W. Southwest point of Long Key, N. S. E. 1 E.	21	This buoy is abreast of Coneh Keys.
East Turtle Shoal Buoy.	Red and black horizontal stripes.	24 class mm.	Collin's Patches beacon, S. W. 1 S. Southeast point of Duck Key, N. by E. 1 E. West end of Grassy Key, N. W. 1 W.	18	This buoy lies just to the westward of the 53-foot spot on East Turtle shoal. It may be passed on either hand.
Turtle Shoal Buoy.	Red and black horizontal stripes.	24 class mm.	Collin's Patches beacon, S. S. E. Dry Bank light-house, S. W. by W.	16	This buoy lies a little to the westward of the 64-foot spot on Turtle shoal. It may be passed on either hand.
Collin's Patches Beacon.	Black.....	An iron shaft, 6 inches in diameter, 10 feet high, with two ellipses at right angles to each other, 25 feet above the water. These ellipses are made of open lattice-work, 8 feet by 5 feet, presenting the appearance of a ball. At 33 feet above the water there is an open lattice cross, with arms 9 inches broad, extending 3 feet from the shaft. On the top there is a ball 15 inches in diameter; and the entire structure painted black.	Dry Bank light house, S. 67° 30' W. (true).	This beacon is placed on Collin's Patches, near the seaward edge of the reef, and bears about south from Duck Key.

Towers, beacons, buoys, spindles, and all other aids to navigation, arranged in regular order as they are passed by vessels entering from sea at Cape Florida, to mark the entrance to and Channel and Obstructions inside the Florida Reefs, from Jupiter Light-house to the Gulf at Dry Tortugas, Florida—Continued.

Name of station or locality of aid.	Color of aid.	Number, if a buoy.	Description of mark or aid.	Bearings of prominent objects from buoy, spindle, or beacon, by compass.	Depth, in fathoms, of spring tides, in feet, of buoy.	General remarks, sailing directions, and other information accessory or useful to mariners.
Seven-foot Buoy.	Shoal Red	11	24 class nun.	Dry Bank light-house, SW. 4 S. Coffin's Patches beacon, E. 4 S.	18	This buoy marks a shoal with 11, 11, and 7 feet of water over it. There is a 15-foot channel to the northward of it, but the best water and clearest ground lies to the southward. It should be left on the starboard hand.
Washerwoman (No. 1) Shoal Buoy.	Red and black horizontal stripes.		24 class can	Dry Bank light-house, SW. 4 S. Coffin's Patches beacon, W. by S. 4 S.	12	This buoy is placed near the eastern end of the Washerwoman shoal, which has only 3 feet of water on it.
Delta Shoal Buoy. (inside.)	Black	13	24 class nun.	Dry Bank light-house, SW. 4 S. Coffin's Patches beacon, NE. by E. 4 E. Southwest end of Night's Key, N. NW. 4 W.	15	Marks the northwest end of the Delta shoal. Vessels passing inside, between the light-house and the shoal, will leave the buoy on the starboard hand. It is one mile from the light-house.
Dry Bank Light-house. (Sombbrero Key.)	Dark		Iron-pile structure, off Dry Bank, Sombbrero Key, and near to Delta shoal. An open frame work of iron, and circular dwelling for the keeper. Height of tower 141 feet above water. First order fixed light.			This light-house is placed on Sombbrero shoals, off Dry Bank, Sombbrero Key, about 1 1/2 mile to the westward of Delta shoal, and 10 miles to the westward of the centre of Coffin's Patches, in 21° 37' 50" N. latitude, and 81° 06' 43" W. longitude.
Pigeon Key Bank Buoy.	Perpendicular stripes.		24 class can	Dry Bank light-house, SE. by E. Pigeon Key, N. by W. Washerwoman buoy, E. by N. 4 N.	26	In midchannel, off Pigeon Key and the bank making out from it.
Bahia Honda Key Buoy.	Perpendicular stripes.		24 class can	Dry Bank light-house, E. 4 N. East end of Bahia Honda Key, N. by E. 4 E.	26	Is 1 1/2 mile from the western end of Bahia Honda Key and entrance.
Loon Key Beacon.						Building.
Loggerhead Key Bank Buoy.	Red	16	24 class nun.	American Shoal beacon, "B," SW. 4 S. Southeast point Loggerhead Key, S. E. 4 E.	18	This buoy lies off a rocky patch, 1 1/2 mile to the southward and eastward of the southeast point of Loggerhead Key.
American Shoal Beacon, "B."	Cylinder red, shaft and vane white.		Beacon, letter "B," painted black; hoop-iron lattice-work; cylinder red, shaft and vane white.	Loggerhead Key, N. 22° 16' 35" E. (true). Eastern Samba beacon, "A," S. 76° 35' 59" W., (true).		This beacon is placed on the seaward edge of the American shoal, about 6 nautical miles from Loggerhead Key and 8 nautical miles from the Eastern Samba beacon, "A," in 21° 31' 21" N. latitude, and 81° 31' 46" W. longitude.
Four-foot Shoal Buoy.	Black	15	24 class nun.	American Shoal beacon, "B," S. E. 4 E. Eastern Samba beacon, "A," SW. 4 W.	23	This buoy marks the northern side of a shoal lying one mile to the eastward of the eastern end of Washerwoman shoal, No. 2.
Washerwoman Shoal (No. 2) Buoy.	Black	17	24 class nun.	Eastern Samba beacon, "A," SW. 4 S. American Shoal beacon, "B," E. SE.	18	This buoy is placed at the northeastern end of the Washerwoman shoal, which lies 4 miles to the northward and westward of the American Shoal beacon, and near a rocky patch.
Maryland Shoal Beacon, "A," 2.						Building.
Eleven-foot Shoal Buoy.	Red and black horizontal stripes.		24 class nun.	Eastern Samba beacon, "A," SW. by S. 4 S. American Shoal beacon, "B," E. by S. 4 S.	21	This buoy lies near a rocky patch with 11 feet of water over it, and off Pottery Key. From ahead of Pottery buoy a W. by S. 4 S. course will take a vessel up to Whitehead Spit buoy, (Red No. 4) Key West harbor.
Eastern Samba Beacon, "A."	Cylinder black, shaft and vane red.		Beacon, letter "A," painted white; hoop-iron lattice-work; cylinder black, shaft and vane red.	Geiger's house, N. 3° 29' 24" E. (true). South Saddle Hills, N. 13° 43' 01" W., (true).		This beacon is placed on the Eastern Samba, near the seaward side, with Spectator's shoal one mile to the eastward, Pottery shoal 2 miles to the eastward, and the Western Samba 3 miles to the westward, in 24° 29' 32" N. latitude, and 81° 29' 59" W. longitude. After passing this beacon, consult the Key West Harbor and Entrance Buoy List.

Towers, beacons, buoys, spindles, and all other aids to navigation, arranged in regular order as they are passed by vessels entering from sea at Cape Florida, to mark the entrance to and Channel and Obstructions inside the Florida Reefs, from Jupiter Light-house to the Gulf at Dry Tortugas, Florida—Continued.

Name of station or locality of aid.

Western Samba Beacon.
East Channel Buoy.

Point of Reefs

Main Channel Entrance Buoy.

Western Shoal

Mississippi Shoal Buoy.

Western Triangular Buoy.

Eastern Triangular Buoy.

Whitehead Spit Buoy.

Key West Light-house.
South end of Middle Ground Buoy.

Inner Middle Ground Buoy.

Towers, beacons, buoys, spinules, and all other aids to navigation, arranged in regular order as they are passed by vessels entering from sea, to mark the Approaches to and Channels leading into Key West Harbor, Florida.

Name of station or locality of aid.	Color of aid.	Number, if a buoy.	Description of mark or aid.	Bearings of prominent objects from buoy, spinule, or beacon, by compass.	Depth, at low water of spring tides, in feet, of buoy.	General remarks, sailing directions, and other information necessary or useful to mariners.
Western Samba Beacon.						Building.
East Channel Shoal Buoy.	Red.	2	1st class min.	Key West light-house, NW. 1 N. Sand Key light-house, W. by S. 1 S.	24	This buoy is placed just outside to the westward of the 16-foot spot of the shoal forming the eastern side of the east channel leading into Key West, and must be left on the starboard hand. When abreast of the buoy, and about 500 yards to the westward of it, and the Key West light-house bearing NW. by N. a little northerly, a northwest (a little westerly) course will lead clear of all obstructions, and in not less than 5 fathoms water up to the Whitehead spit buoy, red, No. 6. This channel between two 16-foot spots, is only about 350 yards wide. All the <i>Main Channel buoys</i> must be left to port, except the red, No. 6, which must be passed and left on the starboard hand. Steamers only, and drawing less than 14 feet water, should undertake to run this channel.

Through Point of Reefs Channel.

Point of Reefs Buoy.	Red.	4	1st class min.	Sand Key light-house, W. by S. 1 S. Key West light-house, N. by W. 1 W.	21	This buoy is placed just to the westward of the 18-foot spot, and on the eastern side of the entrance by that passage. Bring Key West light-house to bear N. by W. 1 W. abreast of and between 400 and 500 yards to the westward of the buoy, and a N. by W. 1 W. course will lead clear of all shoals above the Triangles and the <i>Main Channel buoys</i> , when steer more to the westward, to pass Red buoy No. 6, Whitehead spit.
----------------------	------	---	----------------	--	----	---

Through Main Channel.

Main Channel Entrance Buoy.	Perpendicular stripes.		1st class min.	Sand Key light-house, W. by S. 1 S. Key West light-house, N. 1 W.	27	This buoy is placed in midchannel of the main ship channel leading into Key West harbor. It should be left on either hand close to. After passing this buoy, steer N. 4 W. for Key West light-house, little open on the port bow, which will take you between the East and West Triangles; passing the Triangles a cable's length, hunt up NW. by N. until you open Fleming's Key with the town; then steer for the town.
Western Horn Buoy.	Black.	1	2d class can.	Sand Key light-house, SW. 1 W. Key West light-house, N. 1 W. Northwest Passage light-house, NW. 1 N.	21	This buoy is close to and to the eastward of a 18-foot spot, and must be left on the port hand.
Mississippi Buoy.	Shoal Red.	2	2d class min.	Sand Key light-house, SW. 1 W. Key West light-house, N. 1 W. Northwest Passage light-house, NW. 1 N.	30	This buoy is close to and to the westward of a 17-foot spot, and must be left on the starboard hand.
Western Buoy.	Triangle Black.	3	2d class can.	Sand Key light-house, SW. 1 W. Key West light-house, N. 1 W. Northwest Passage light-house, NW. 1 N.	30	This buoy is close to a 16-foot spot, and must be left on the port hand.
Eastern Buoy.	Triangle Red.	4	2d class min.	Sand Key light-house, SW. 1 W. Key West light-house, N. 1 W. Northwest Passage light-house, NW. 1 N.	30	This buoy is near a 17-foot spot, and nearly opposite to the West Triangle buoy. Pass between these two buoys, back to port, red to starboard.
Whitehead Spit Buoy.	Red.	6	1st class min.	Sand Key light-house, SW. by S. 1 S. Key West light-house, NE. 1 N. Northwest Passage light-house, NW. 1 W.	21	This buoy marks the southwest extremity of Whitehead Spit, and must be left on the starboard hand.
Key West Light-house.	White.		Fixed light.			Tower in the town.
South end of Middle Ground Buoy.	Black.	0	3d class can.	Key West light-house, E. 1 N. Northwest Passage light-house, NW. 1 W. Sand Key light-house, SW. by S. 1 S.	18	This buoy is near an 18-foot spot, with main channel to the eastward of it.
Inner Middle Ground Buoy.	Black.	11	3d class can.	Northwest Passage light-house, SW. by W. Key West light-house, SE. by E. 1 E. Sand Key light-house, S. SW.	18	This buoy marks the northwest side of the harbor at the 18-foot corner.

Towers, beacons, buoys, spindles, and all other aids to navigation, arranged in regular order as they are passed by vessels entering from sea, to mark the Main Channel into Key West Harbor, Florida—Continued.

Name of station or locality of aid.	Color of aid.	Number, if a buoy.	Description of mark or aid.	Bearings of prominent objects from buoy, spindle, or beacon, by compass.	Depth at low water of spots or shoals, in feet, if a buoy.	General remarks, sailing directions, and other information necessary or useful to mariners.
South end of Frankfort Bank Buoy.	Black.....	13	3d class can.....	Northwest Passage light-house, NW, by W. 1 W. Key West light-house, SE, by E. 1 E. Sand Key light-house, S, SW, 1 W.	18	This buoy marks the southern end of Frankfort Bank, at the 18-foot corner.
<i>Entrance by West Channel into Key West Harbor.</i>						
Western Dry Rocks Beacon.						Building.
West Channel Shoal Buoy.	Red.....	2	1st class can.....	Sand Key light-house, E..... Key West light-house, NE, 1 E. Northwest Passage light-house, N. 1 E.	21	This buoy is near an 18-foot spot due west from Sand Key light-house, and should be left on the starboard hand; also it may be passed to the eastward by giving it a berth to clear the 18-foot spot.
West side of Channel Buoy.	Black.....	1	1st class min.....	Sand Key light-house, E, by S. Key West light-house, NE, by E. Northwest Passage light-house N, by E. 1 E.	21	This buoy is to the eastward of a shoal, with 11 feet water over it, which extends in a northwesterly direction 1 mile.
Twelve-foot Buoy.	Shoal Black.....	3	3d class min.....	Sand Key light-house, SE, by E. 1 E. Key West light-house, NE, 1 E. Northwest Passage light-house, N. 1 E.	27	This buoy is near an isolated 18-foot spot.
Sixteen-foot Buoy.	Shoal Red.....	4	3d class can.....	Sand Key light-house, SE, by E. 1 E. Key West light-house, NE, 1 E. Northwest Passage light-house, N. 1 E.	33	This buoy is near a 16-foot spot, and should be left on the starboard hand.
Middle Ground Beacon.						Building; inside of outer reefs and Sand Key light-house.
Inner Sixteen-foot Shoal Buoy.	Red.....	6	2d class can.....	Sand Key light-house, S, by E. 1 E. Key West light-house, NE, 1 E. Northwest Passage light-house, N, by W.	42	This buoy is near to a 16-foot shoal, to the westward of the Middle Ground.
West Crawfish Key Bank Buoy.	Black.....	5	2d class min.....	Sand Key light-house, S..... Key West light-house, NE, by E. Northwest Passage light-house, N, by W. 1 W.	21	This buoy marks the southern extremity of the flat making out from West Crawfish key.
Eighteen-foot Shoal Buoy.	Red.....	8	2d class can.....	Sand Key light-house, SW, by S. 1 S. Key West light-house, NE, 1 N. Northwest Passage light-house, NW, by N. 1 N.	36	This buoy is near an 18-foot spot, 24 miles to the northward of the Eastern Dry Rocks.
Whitehead Spit Buoy. ("Main Ship Channel.")	Red.....	6	1st class min.....	Sand Key light-house, SW, by S. 1 S. Key West light-house, NE, 1 N. Northwest Passage light-house, NW, 1 W.	21	This buoy marks the southwest extremity of Whitehead spit, and must be left on the starboard hand.
Kingfish Buoy.	Shoal Black.....	7	3d class min.....	Sand Key light-house, S, by W. 1 W. Key West light-house, E, 1 S. Northwest Passage light-house, NW, 1 W.	18	This buoy marks the eastern edge of the Kingfish shoal, and the west side of the channel leading to the Gulf by the northwest passage. Going to the Key West anchorage, it must be left on the port hand, and the same going through the northeast passage to the Gulf.
South end of Middle Ground Buoy.	Black.....	9	3d class can.....	Key West light-house, E. 1 N. Northwest Passage light-house, NW, 1 W. Sand Key light-house, SW, by S. 1 S.	18	This buoy is near an 18-foot spot, with main channel to the eastward of it.
Inner Middle Ground Buoy.	Black.....	11	3d class can.....	Northwest Passage light-house, NW, by W. Key West light-house, SE, by E. 1 E. Sand Key light-house, S, SW.	18	This buoy marks the northwest side of the harbor at the 18-foot corner.
South end of Frankfort Bank Buoy.	Black.....	13	3d class can.....	Northwest Passage light-house, NW, by W. 1 W. Key West light-house, SE, by E. 1 E. Sand Key light-house, S, SW, 1 W.	18	This buoy marks the southern end of the Frankfort Bank at the 18-foot corner.

Towers, beacons, buoys, spindles, and all other aids to navigation, arranged in regular order as they are passed by vessels entering from sea, to mark the Main Channel into Key West Harbor, Florida—Continued.

Name of station or locality of aid.

Outer Buoy, (name.)

Outer Bar Buoy

Turning Point

NORTHWEST CORNER LIGHT-HOUSE.

Middle Ground Buoy

Middle Ground Buoy (west end.)

Middle Ground Buoy (east end.)

Middle Ground Buoy

Kingfish Buoy.

South end of Middle Ground Buoy.

Inner Middle Ground Buoy.

South end of Frankfort Bank Buoy.

Entrance Buoy, (name.)

Entrance Buoy, (name.)

Towers, beacons, buoys, spindles, and all other aids to navigation, arranged in regular order as they are passed by vessels entering from sea, to mark the Northwest Channel into Key West Harbor from the Gulf.

Name of station or locality of aid.	Color of aid.	Number, if a buoy.	Description of mark or aid.	Bearings of prominent objects from buoy, spindle, or beacon, by compass.	Depth at low water of spring tides, in fathoms.	General remarks, sailing directions, and other information necessary or useful to mariners.
Outer Buoy, (entrance)	Perpendicular stripes.	21	21 class can.	Northwest Passage light-house, S. by W. 4 W. Key West light-house, SE.	21	This buoy will be kept in midchannel, to lead to the Northwest Passage bar and entrance.
Outer Bar Buoy.	Perpendicular stripes.	31	31 class can.	Northwest Passage light-house, S. by W. 4 W. Key West light-house, SE. 4 E.	12	This buoy is in the outer bar, and should be passed close to on either side.
Turning Point Buoy.	Red.	2	21 class min.	Northwest Passage light-house, S. by W. 4 W. Key West light-house, SE. 4 E.	12	This buoy marks the turning-point in the channel, and should be left on the starboard hand, but close to.
NORTHWEST CHANNEL LIGHT-HOUSE.	Dark.		Iron screw-pile light-house, placed on the flats; to mark the entrance and channel of the bar leading to the Northwest Passage.		4	Foundation dark, dwelling and lantern white; height above sea level 10 feet; fixed white light of the 3d order, in 24° 37' 01" north latitude, and 81° 51' 01" west longitude.
Mid-channel Buoy.	Perpendicular stripes.	31	31 class min.	Northwest Passage light-house, W. 4 N. Sand Key light-house, S. 4 E. Key West light-house, S. SE. 4 E.	22	In midchannel, midway between Turning Point buoy (red, No. 2) and Middle Ground buoy, (black, No. 1).
Middle Ground Buoy, (east end.)	Black.	1	31 class can.	Northwest Passage light-house, W. by N. 4 N. Key West light-house, SE. 4 E.	12	This buoy is near the northern and western end of the Middle Ground, with the best channel to the starboard of it.
Middle Ground Buoy, (west end.)	Black.	3	31 class can.	Northwest Passage light-house, NW. by W. 4 W. Key West light-house, SE. 4 E.	12	This buoy is placed a little to the northward and eastward of a 9-foot spot, and must be left on the port hand.
Mid-channel Buoy.	Perpendicular stripes.	31	31 class min.	Key West light-house, SE. by E. 4 E. Sand Key light-house, S. by W. 4 W.	27	This buoy is in midchannel, between Middle Ground and Crawfish Key shoal.
Kingfish Buoy.	Shoal	7	31 class min.	Sand Key light-house, S. by W. 4 W. Key West light-house, E. 4 S. Northwest Passage light-house, NW. 4 W.	18	This buoy marks the eastern edge of Kingfish shoal, and the west side of the channel, leading to the Gulf, and from the Gulf by the Northwest channel.
South end of Middle Ground Buoy.	Black.	9	31 class can.	Key West light-house, E. 4 N. Northwest Passage light-house, NW. 4 W. Sand Key light-house, SW. by S. 4 S.	18	This buoy is near an 18-foot spot with main channel to the eastward of it.
Inner Middle Ground Buoy.	Black.	11	31 class can.	Northwest Passage light-house, NW. by W. 4 W. Key West light-house, SE. by E. 4 E. Sand Key light-house, S. SW.	18	This buoy marks the northwest side of the harbor at the 18-foot corner.
South end of Frankfort Bank Buoy.	Black.	14	31 class can.	Northwest Passage light-house, NW. by W. 4 W. Key West light-house, SE. by E. 4 E. Sand Key light-house, S. SW. 4 W.	18	This buoy marks the southern end of the Frankfort Bank, at the 18-foot corner.
Entrance Buoy, (mid-channel)	Perpendicular stripes.	1st	1st class can.	Sand Key light-house, E. SE. by E. 4 E. Northwest Passage light-house, N. by E. 4 E.	1	Pass this buoy close to on either hand, and steer E. by N. 4 N. until the Middle Ground buoy is passed, and leaving all buoys of the West channel on the starboard hand, until on with West Crawfish Key buoy, (No. 5, black) which leave on the port hand, and then follow the inner harbor list. Having passed West Channel buoy, (No. 8,) a N.E. by N. 4 N. course, and clearing White-head Spit buoy (No. 6, red) of the main channel, will lead into the inner harbor, between the buoys, red and black, according to the directions.

Entering from the Gulf, to mark the entrance by the North Channel into Key West Harbor.

Towers, beacons, buoys, spindles, and all other aids to navigation, arranged in regular order as they are passed by vessels entering from sea, to mark the entrance from the eastward into Dry Tortugas Harbor, Florida.

Name of station or locality of aid.	Color of aid.	Number of a buoy.	Description of mark or aid.	Bearings of prominent objects from buoy, spindle, or beacon, by compass.	Depth at low water of springs, fathoms, in feet, of buoy.	General remarks, sailing directions, and other information necessary or useful to mariners.
Southeast Point of Shoals making out from Garden and Bird Key's Buoy.	Black	1	2d class can	Dry Tortugas light-house, S.W. by W.	18	This buoy marks the southeast point of the shoal making out from the fort, with deep water close to it.
East side of Entrance Buoy.	Red	2	2d class min.	Dry Tortugas Harbor light-house, N. 4 W.	18	This buoy marks the southern point of the shoal making out from East and Sand Keys, and the east side of the channel.
DRY TORTUGAS HARBOR Light-house, (inside of Fort Jefferson.)	White		White tower, inside of Fort Jefferson, Garden Key, Dry Tortugas, 70 feet above the level of the sea; fixed white light of the 4th order.			This light-house is in latitude 24° 37' 47" north, and in longitude 82° 52' 53" west.
Garden Key Shoal Buoy.	Black	3	3d class can	Dry Tortugas light-house, W. by S.	12	This buoy marks the northeast point of Garden Key shoal.
Garden Key Shoal Buoy.	Black	5	3d class can	Dry Tortugas Harbor light-house, S.W. 4 S.	12	This buoy marks the northern point of Garden Key shoal.
<i>Sailing Directions.</i>						
Get Dry Tortugas Harbor light-house to bear W. by N., and run for it and up with red buoy No. 2, which pass on the starboard hand; then haul up NW. by W. for buoy No. 3, (black,) leaving it on the port hand; then steer W. 4 S. for buoy No. 5, (black,) which also leave on the port hand. Large vessels should not attempt to run into this harbor without a pilot, as the channel is narrow, and foul ground inside of buoy No. 3, (black.)						

To mark the Entrance into Dry Tortugas Harbor from the West or Southwest.

Fort Jefferson (Sea) Buoy.	Red	8	1st class min.	Dry Tortugas light-house, N. NW.	18	This buoy marks the southern extremity of the shoal making out from Fort Jefferson, and the eastern side of the passage into the harbor, between Loggerhead Key and the fort.
Mid-channel Buoy.	Perpendicular stripes.		3d class min.	Dry Tortugas Harbor light-house, E. 4 N.	15	An 8-foot shoal lies not far off to the southward and eastward.
Dry Tortugas Light-house, (Loggerhead Key.)	White and black.		Tower, 150 feet high; lower half painted white, and the upper black. Cooper's dwelling placed a little to the southward of the tower. Fixed white light of the 1st order.	This light-house tower is on Loggerhead Key, the westernmost of the Tortugas group. It is nearly one mile long, northeast and southwest, and 700 feet broad bordered all around by bushes.		This light-house is in latitude 24° 38' 12" north, and in longitude 82° 55' 15" west.
Dry Tortugas Harbor Light-house, (inside Fort Jefferson.)	White		White tower inside of Fort Jefferson, Garden Key, Dry Tortugas. Fixed white light 4th order, 70 feet above the level of the sea.			This light-house is in latitude 24° 37' 47" north, and longitude 82° 52' 53" west.
Garden Key Shoal Buoy.	Black	5	3d class can	Dry Tortugas light-house, W. 4 S.	12	This buoy marks the northern point of Garden Key shoal.

To mark the Entrance to Dry Tortugas Harbor from the Northwest.

Outer (Entrance) Buoy.	Perpendicular stripes.		2d class min.	Dry Tortugas light-house, S. by W. 4 W.	19	This buoy marks the Mid-channel Entrance and between a 10 and 16 feet shoal on either side.
Middle Ground Buoy.	Red and black horizontal stripes.		3d class min.	Dry Tortugas light-house, S.W. by W. 4 W.	12	This buoy is on the north side of a shoal with 11 feet of water over it, and may be passed, not too close, on either hand.

They are passed
near, Florida.

tions, and other in-
formation to mariners.

st point of the shoal
with deep water close

point of the shoals
Sand Keys, and the

24° 37' 47" north, and

st point of Garden

point of Garden Key

ons.

house to bear W. by
with red buoy No. 2,
hand; then haul up
black, leaving it on
S. 1 S. for buoy No. 5,
the port hand. Large
run into this harbor
is narrow, and foul
(black.)

ru extremity of the
at Jefferson, and the
into the harbor, be-
fore the fort.

to the southward and

21° 28' 12" north, and

21° 37' 47" north, and

point of Garden Key

channel Entrance and
and on either side.

ie of a shoal with 11
by be passed, not to

BEACONS AND BUOYS.

Towers, beacons, buoys, spindles, and all other aids to navigation, arranged in regular order as they are passed by vessels entering from sea, to mark the Entrance to Charlotte's Harbor, Florida.

Name of station or locality of aid.	Color of aid.	Number, if a buoy.	Description of mark or aid.	Bearings of prominent objects from buoy, spindle, or beacon, by compass.	Depth at low water of spring tides, in feet, of buoy.	General remarks, sailing directions, and other information necessary or useful to mariners.
Outer (Entrance) Buoy.	Perpendic-ular stripes.	24	class num.	South point of Gasparilla Island, N. E. 1 E. North point of Lacosta Island, N. E. by E. 1 E.	23	This buoy is in midchannel between the shoals, and breakers on either side. A N. E. 1 E. course from the buoy for 1 1/2 miles, and then N. E. by E. 1 E., will take you inside to a safe anchorage in 23 feet of water, under Gasparilla Island Point, to the northward of the entrance.

To mark the Caloosa Entrance to San Carlos Bay, Florida.

Outer (Entrance) Buoy.	Black	1	24 class num.	Bowditch Point, N. 1/2 W. Sinabel Island Point, NW. 1/2 W. Punta Rosa, SW. by N.	10	This buoy is placed three-fourths of a mile outside of the 12-foot soundings curve, and should be left on the port hand in going in.
Inner Buoy	Red	2	3d class num.	Punta Rosa, NW. Outer buoy, S. SE. 1 E.	10	This buoy marks the turning point for Punta Rosa and Caloosa entrance.
Stake and Board	Red	2	Stake and board, painted red, and numbered.	Inner Buoy SE. Sinabel Island Point, SW. 1 S.	6	This stake is on the southeast point of Punta Rosa Bank.
Stake and Cross	Red	4	Stake and cross, painted red, and numbered.	Outer stake, SE. by E. Punta Rosa, NW. 1 N.	3	This stake is on the southwest edge of Punta Rosa Bank.
Stake and Triangle	Red	6	Stake and triangle, painted red, and numbered.	Sinabel Island Point, S. 1/2 E. Inside of Bowditch Point, E. SE.	6	This stake is on the edge of the bank to the southward of Punta Rosa.

To mark the Entrance to and up Tampa Bay, Florida.

Outer (Entrance) Buoy.	Perpendic-ular stripes.	24	class num.	Egmont light-house, SE. by E. 1 E. Northwest point of Palm Key, SE. 1 S.	24	This buoy is placed in midchannel line for entering between Egmont and Mullet Keys. Bring Egmont light-house to bear SE. by E. 1 E., and run in for this buoy. When up with it, steer E. by S. 1 S. for Middle buoy, which pass close to, on either hand. The water is bold close to Egmont light-house, and there is a shoal with only two feet of water over it making out from the south end of Mullet Key, to the westward. The lead will guide you after getting inside. Good anchorage will be found inside of Mullet Key, in from 5 1/2 to 3 1/2 fathoms. If bound up, be guided by the buoys on either side of the main channel.
Middle Buoy, (Entrance)	Perpendic-ular stripes.	24	class num.	Egmont light-house, SE. by E. 1 E. Northwest point of Palm Key, SE. by S. 1 S.	20	
Egmont Shoal Buoy.	Red	2	3d class num.	Egmont light-house, E. by S. 1 S. Southwest point of Egmont Key, S. by E. 1 E.	18	This buoy marks the northern and western end of the shoal making out to the westward from the northward of Egmont Key.
Egmont Light-house.	White		Tower of brick, painted white, 95 feet high. Fixed white light, of the 4th order.			On Egmont Key, at the entrance to Tampa bay. The dwelling is a two-story brick building, white washed, in 27° 25' 24" N. latitude, and 82° 15' 13" W. longitude.
Turning Point Buoy.	Red	1	3d class num.	Egmont light-house, W. by N. 1 N. North end of Palm Key, SW. by W.	11	After passing inside of Egmont and Mullet Keys, on the E. by S. 1 S. course until in four fathoms water, and with the buoy No. 4 right ahead, distant 2 miles, steer E. NE. until Buoy No. 1, black, is passed on the port hand.
Bird Key Bank Buoy.	Black	1	3d class num.	Egmont light-house, W. by S. 1 S. Piney Point, N. by W.	10	When this buoy bears northwest and in 4 fathoms water, steer N. NE. 1 E. until to the northward of Piney Point and Red Buoy No. 6.
Piney Point Buoy	Black	3	3d class num.	Egmont light-house, SW. by W. 1 W. Piney Point, NW. by W. 1 W.	11	Marks the edge of Piney Point shoal, at 10 feet water.
Lower end of Mangrove Point Buoy.	Red	6	3d class num.	Piney Point, W. by N. 1 N. Mangrove Point, E. by N. 1 N.	15	Off the 10-foot spot on the lower end of Mangrove Point shoal.
Upper edge of Mangrove Point Bank Buoy.	Red	8	3d class num.	Gadsden's Point, N. NE. 1 E. Passage Point, N. NW.	16	This buoy marks a 12-foot spot on the upper edge of Mangrove Point shoals.
South end of Gadsden's Point Bank Buoy.	Black	5	3d class num.	Gadsden's Point, N. NE. Mangrove Point, S. 1 W.	12	This buoy marks a 10-foot shoal south of Gadsden's Point.
Gadsden's Buoy.	Point	7	3d class num.	Gadsden's Point, NW. 1 N. Mangrove Point, S. SW.	10	This buoy marks a 10-foot shoal off Gadsden's Point.
Head of the Bay Buoy.	Black	9	3d class num.	Ballast Point, N. E. by E. 1 E. Fort Brooke, N. by E. 1 E.	10	This buoy is placed on the port side of midchannel line, and near the head of the bay.

Towers, beacons, buoys, spindles, and all other aids to navigation, arranged in regular order as they are passed by vessels entering from Tampa Bay, to mark the Entrance to and up Manatee River, Florida.

Name of station or locality of aid.	Color of aid.	Number, if a buoy.	Description of mark or aid.	Bearings of prominent objects from buoy, spindle, or beacon, by compass.	Depth, at low water of spring tides, in feet, of buoy.	General remarks, sailing directions, and other information necessary or useful to mariners.
Bar Buoy, (Entrance.)	Perpendicular stripes.	2d class mm.	Egmont Key light-house, NW. 1 N. North point of Palm Key, W. 1 N.	9	After passing inside of Egmont Key light-house, steer SE, by S, until you make this buoy, which pass close-to on either hand, and steer E. 1 S. for Buoy No. 3, (black,) leaving stake with triangle on it and number-red "1" (black) on the port hand.
Stake and Triangle.	Black 1	Stake, with triangle on it painted black, and numbered.	Egmont light house, NW..... North end of Palm Key, W. by N.	6	This stake is 1 ft in 6 feet of water, on the point of a bank making out from Manatee Point, and must be left on the port hand.
Sand Bar Buoy.	Black 3	3d class can.	Speed's house, E. 1 S. Sprague's Point, W. by S.	71	Leave this buoy on the port hand, distant about 50 yards, and steer for Speed's Point, and you will make Buoy No. 2, (red,) which pass close-to on the starboard hand.
Shaw's Point Buoy.	Red 2	3d class mm.	Speed's Point, E. 1 S. Shaw's Point, S. by E. 1 E.	8	From this buoy steer SE, by E, for Buoy No. 5, (black,) which pass close-to on the port hand.
Speed's Point Buoy.	Black 5	3d class can.	Speed's house, NW. by W. 1 W. Bull Pen Point, E. by S. 1 S. Shaw's Point, W. by N.	1	Steer from this buoy SE, 1 E, for Buoy No. 4, (red,) leaving it on the starboard hand.
Sword-fish Point Buoy	Red 1	3d class mm.	Sword-fish Point, S. by W..... Bull Pen Point, E. Speed's house, NW. 1 N.	8	After passing this buoy, a good anchorage can be found, in 10 feet of water, off Bull Pen Point.

Entering from sea, to mark the Entrance to and Channel into Cedar Keys, Florida.

Spit Buoy	Red 2	1st class mm	Sea-horse Key Light-house, NE. by N.	27	This buoy is placed about one-half of a mile to the southward and westward of the 11-foot line of soundings off Sea-horse reef, which extends out from Sea-horse Key in a southwesterly direction 10 miles, with from 10 to 11 feet of water at its outer end. Being in not less than four fathoms water, bring Sea-horse Key light-house to bear N. by E. 1 E., and run for it until up with Black buoy, No. 1, (passing the four mid-channel buoys on either side close-to,) which leave on the port hand, and steer NE. 1 N. until up with Stake No. 2, (red,) with cross on it, which leave on the starboard hand, and steer N. 1 W. for Stake No. 4, (red,) with triangle on it; between these stakes, good anchorage can be found in from 10 to 13 feet of water. Above this channel is very narrow and crooked, and strangers should not attempt to run it without a pilot.
Outer Buoy, (Entrance.)	Perpendicular stripes.	2d class can.	Sea-horse Reef beacon, N. 1 E. Sea-horse Key light-house, N. by E. 1 E.	30	Pass this buoy on either side.
Inner Buoy, (Entrance.)	Perpendicular stripes.	2d class mm.	Sea-horse Reef beacon, NW. by N. 1 N. Sea-horse Key light-house, N. by E. 1 E.	22	In mid-channel, to be passed close to; but the best water is to starboard of it.
Sea-horse Reef Beacon.	Black	An iron screw-pile beacon, three piles, from which rises an open frame-work extending 38 feet above the water, on the top of which is a tripod surmounted by a ball 8 feet in diameter; the entire height being 50 feet, and painted black.	Sea-horse Key light-house, NE. by N. 1 N.	This beacon is near the centre of Sea-horse reef, 61 nautical miles from Sea-horse Key light-house, which extends out in a southwesterly direction 10 miles, with from 10 to 11 feet of water on it at its outer end.
Mid-channel Buoy.	Perpendicular stripes.	2d class can.	Sea-horse Reef beacon, SW. by W. 1 W. Sea-horse Key light-house, N. by E. 1 E.	20	Placed in mid-channel, and may be passed close-to on either side.
Mid-channel Buoy.	Perpendicular stripes.	2d class mm.	Sea-horse Key light-house, N. by E. 1 E. Sea-horse Reef beacon, SW. 1 W.	19	Placed in mid-channel, and may be passed on either hand close-to.
Black Buoy No. 1.	Black 1	2d class can.	Sea-horse Key light-house, N. by E. 1 E. East end of Snake Key, NE. by E. 1 E.	9	This buoy marks the bar and change of course from N. by E. 1 E. to NE. 1 N. It must be left on the port hand.
Stake and Cross.	Black 3	Stake, with cross on it, painted black, and numbered.	East end of Snake Key, E. by N. 1 N. Sea-horse Key light-house, N. by E. 1 E.	4	Placed on the edge of the west bank making out from Sea-horse Key.

Towers, beacons, buoys, spindles, and all other aids to navigation, arranged in regular order as they are passed by vessels entering from Tampa Bay, to mark the Entrance to and up Manatee River, Florida.

Name of station or locality of aid.

Stake and Cross

CEAR KEYS (OR SEA-HORSE KEY) LIGHT-HOUSE.

Stake and Triangle

Stake and Triangle

Stake and Bush

Stake and Bush

Stake and Triangle

Stake and Cross

Stake and Board

Stake and Cross

Stake and Triangle

NOTE.—The buoys, with odd numbers, may be passed on either side of the

Other districts

By

KEY WEST, FLORIDA.

Towers, beacons, buoys, spindles, and all other aids to navigation, arranged in regular order as they are passed by vessels entering from sea, to mark the Entrance to and Channel into Cedar Keys, Florida—
Continued.

Name of station or locality of aid.	Color of aid.	Number, if a buoy.	Description of mark or aid.	Bearings of prominent objects from buoy, spindle, or beacon, by compass.	Depth, in feet, of water of spring tides, with feet, of buoy.	General remarks, sailing directions, and other information necessary or useful to mariners.
Stake and Cross	Red	2	Stake, with cross on it, painted red and numbered.	Sea-horse Key light-house, N.W. $\frac{1}{4}$ N. East end of Snake Key, E. by N. $\frac{1}{4}$ N.	9	This stake is placed to the westward of a 4-foot spot, and must be left on the starboard hand; also marks the change of course from N.E. $\frac{1}{4}$ N. to N. $\frac{1}{4}$ W.
CEAR KEYS (OR SEA-HORSE KEY) LIGHT-HOUSE.	White		Light on keeper's dwelling; fixed light varied by flashes.	On Sea-horse Key, on the eastern end of the mound.		This light-house is about 10 $\frac{1}{2}$ miles distant from the southwestern extremity of Sea-horse reef, and it must be brought to bear N. by E. $\frac{1}{4}$ E. by compass, and steered for on that course until the bar, with 3 feet of water on it, is reached at Black buoy No. 1.
Stake and Triangle	Red	1	Stake with triangle on it, painted red and numbered.	Sea-horse Key light-house, W. S.W. North point of Sea-horse Key, N.W. by W. $\frac{1}{4}$ W.	7	This stake is placed a little to the westward of a 6-foot spot, and must be left on the starboard hand.
Stake and Triangle	Black	5	Stake with triangle on it, painted black and numbered.	Sea-horse Key light-house, S.W. $\frac{1}{4}$ W. North point of Snake Key, E. $\frac{1}{4}$ S.	8	Placed a little south of a 5-foot spot, and near the edge of the bank making out from Sea-horse Key. It must be left on the port hand.
Stake and Bush	Black	7	Stake with bushy top, and painted black.	Sea-horse Key light-house, S.W. $\frac{1}{4}$ W. West end of Snake Key, S.E. $\frac{1}{4}$ E.	8	Placed on the western edge of the bank, and should be passed close to on the port hand.
Stake and Bush	Red	6	Stake with bushy top, and painted red.	Sea-horse Key light-house, S.W. $\frac{1}{4}$ W. West end of Snake Key, S. by E. $\frac{1}{4}$ E.	4	Placed on the eastern edge of the bank, and must be left on the starboard hand.
Stake and Triangle	Black	9	Stake with triangle on it, painted black and numbered.	Sea-horse Key light-house, S.W. $\frac{1}{4}$ S. South end of Depot Key, E. by S.	7	Placed on the north point of a mud flat, partially visible and covered with grass. It serves to mark the turning-point into the channel leading to Way Key.
Stake and Cross	Red	8	Stake with cross on it, painted red and numbered.	Sea-horse Key light-house, S.W. $\frac{1}{4}$ S. South end of Depot Key, S. S.E.	1	Placed on the edge of the bank making out from Depot Key. It must be left on the starboard hand.
Stake and Board	Red	10	Stake with board on it, painted red and numbered.	Sea-horse Key light-house, S.W. $\frac{1}{4}$ S. South end of Depot Key, E. by S. $\frac{1}{4}$ S.	6	This stake is on the south point of a mud flat, with only one foot of water on it. It marks the turning-point up Way Key channel. It must be left on the starboard hand.
Stake and Cross	Black	11	Stake with cross on it, painted black and numbered.	Sea-horse Key light-house, S. S.W. $\frac{1}{4}$ W. South end of Depot Key, E. by S.	8	Placed to mark the southeast end of a mud flat, and must be left on the port hand.
Stake and Triangle	Red	12	Stake with triangle on it, painted red and numbered.	Sea-horse Key light-house, S.W. $\frac{1}{4}$ S. East end of Snake Key, S. S.E.	1	Placed on the edge of a mud flat, running about N.E. and S.W., with only one foot of water on it. It must be left on the port hand going to Depot Key, and left to starboard going to Way Key.

NOTE.—The courses and bearings are magnetic. Red buoys, with even numbers, must be left on the starboard hand. Black buoys, with odd numbers, must be left on the port hand. Buoys with black and white perpendicular stripes are in midchannel, and may be passed close to on either hand. Buoys with red and black horizontal stripes are on obstructions, with channels on either side of them.

Other distinguishing marks are additional and special.

BY ORDER OF THE LIGHT-HOUSE BOARD:

CHAS. A. BABCOCK, *Commander U. S. Navy,*
Light-house Inspector, Seventh District.

KEY WEST, Florida, May 1, 1871.

INDEX.

	<i>Page.</i>
Florida Coast and Reefs from Jupiter Light-house, to include Dry Tortugas, Florida.....	5
Entrance to and Obstructions in the Channel inside the Florida Reefs, from Cape Florida to Key West.....	8
Entrance to Key West Harbor by the East Channel.....	8
Entrance to Key West Harbor by the Point of Reefs Channel.....	13
Entrance to Key West Harbor by the Main Channel.....	13
Entrance to Key West Harbor by the West Channel.....	14
Entrance to Key West Harbor by the North Channel.....	15
Entrance to Key West Harbor by the Northwest Channel.....	15
Entrance to Dry Tortugas Harbor by the East Channel.....	16
Entrance to Dry Tortugas Harbor by the West or Southwest Channel.....	16
Entrance to Dry Tortugas Harbor by the Northwest Channel.....	16
Entrance to Charlotte's Harbor, Florida.....	17
Entrance to San Carlos Bay, (Caloosa Entrance,) Florida.....	17
Entrance to and up Tampa Bay, Florida.....	17
Entrance to and up Manatee River, Florida.....	18
Entrance to and Channel to Cedar Keys, Florida.....	18

Page.

.....	5
.....	8
.....	8
.....	13
.....	13
.....	14
.....	15
.....	15
.....	16
.....	16
.....	16
.....	17
.....	17
.....	17
.....	18
.....	18

