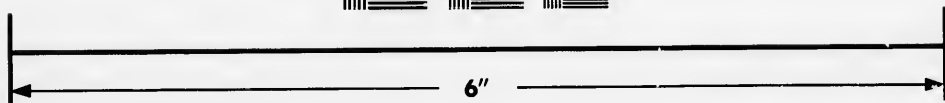
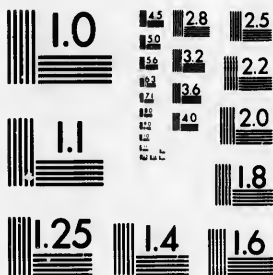
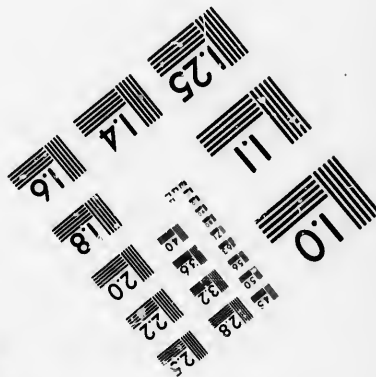
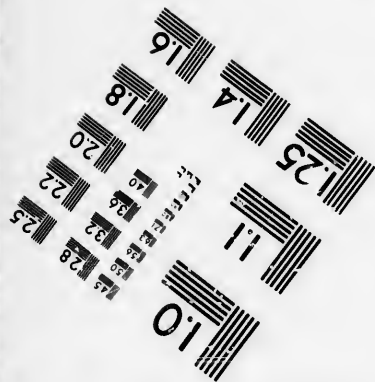


**IMAGE EVALUATION  
TEST TARGET (MT-3)**



Canada



**Photographic  
Sciences  
Corporation**

23 WEST MAIN STREET  
WEBSTER, N.Y. 14580  
(716) 872-4503

**CIHM/ICMH  
Microfiche  
Series.**

**CIHM/ICMH  
Collection de  
microfiches.**



**Canadian Institute for Historical Microreproductions / Institut canadien de microreproductions historiques**

**© 1985**

Technical and Bibliographic Notes/Notes techniques et bibliographiques

The Institute has attempted to obtain the best original copy available for filming. Features of this copy which may be bibliographically unique, which may alter any of the images in the reproduction, or which may significantly change the usual method of filming, are checked below.

L'institut a microfilmé le meilleur exemplaire qu'il lui a été possible de se procurer. Les détails de cet exemplaire qui sont peut-être uniques du point de vue bibliographique, qui peuvent modifier une image reproduite, ou qui peuvent exiger une modification dans la méthode normale de filmage sont indiqués ci-dessous.

- |                                                                                                                                                                                                                                                                                                                                                |                                                                                                                                                                                                                                                                                                                                            |
|------------------------------------------------------------------------------------------------------------------------------------------------------------------------------------------------------------------------------------------------------------------------------------------------------------------------------------------------|--------------------------------------------------------------------------------------------------------------------------------------------------------------------------------------------------------------------------------------------------------------------------------------------------------------------------------------------|
| <input type="checkbox"/> Coloured covers/<br>Couverture de couleur                                                                                                                                                                                                                                                                             | <input type="checkbox"/> Coloured pages/<br>Pages de couleur                                                                                                                                                                                                                                                                               |
| <input type="checkbox"/> Covers damaged/<br>Couverture endommagée                                                                                                                                                                                                                                                                              | <input type="checkbox"/> Pages damaged/<br>Pages endommagées                                                                                                                                                                                                                                                                               |
| <input type="checkbox"/> Covers restored and/or laminated/<br>Couverture restaurée et/ou pelliculée                                                                                                                                                                                                                                            | <input type="checkbox"/> Pages restored and/or laminated/<br>Pages restaurées et/ou pelliculées                                                                                                                                                                                                                                            |
| <input type="checkbox"/> Cover title missing/<br>Le titre de couverture manque                                                                                                                                                                                                                                                                 | <input checked="" type="checkbox"/> Pages discoloured, stained or foxed/<br>Pages décolorées, tachetées ou piquées                                                                                                                                                                                                                         |
| <input type="checkbox"/> Coloured maps/<br>Cartes géographiques en couleur                                                                                                                                                                                                                                                                     | <input type="checkbox"/> Pages detached/<br>Pages détachées                                                                                                                                                                                                                                                                                |
| <input type="checkbox"/> Coloured ink (i.e. other than blue or black)/<br>Encre de couleur (i.e. autre que bleue ou noire)                                                                                                                                                                                                                     | <input checked="" type="checkbox"/> Showthrough/<br>Transparence                                                                                                                                                                                                                                                                           |
| <input type="checkbox"/> Coloured plates and/or illustrations/<br>Planches et/ou illustrations en couleur                                                                                                                                                                                                                                      | <input type="checkbox"/> Quality of print varies/<br>Qualité inégale de l'impression                                                                                                                                                                                                                                                       |
| <input type="checkbox"/> Bound with other material/<br>Relié avec d'autres documents                                                                                                                                                                                                                                                           | <input type="checkbox"/> Includes supplementary material/<br>Comprend du matériel supplémentaire                                                                                                                                                                                                                                           |
| <input type="checkbox"/> Tight binding may cause shadows or distortion<br>along interior margin/<br>La reliure serrée peut causer de l'ombre ou de la<br>distortion le long de la marge intérieure                                                                                                                                             | <input type="checkbox"/> Only edition available/<br>Seule édition disponible                                                                                                                                                                                                                                                               |
| <input type="checkbox"/> Blank leaves added during restoration may<br>appear within the text. Whenever possible, these<br>have been omitted from filming/<br>il se peut que certaines pages blanches ajoutées<br>lors d'une restauration apparaissent dans le texte,<br>mais, lorsque cela était possible, ces pages n'ont<br>pas été filmées. | <input type="checkbox"/> Pages wholly or partially obscured by errata<br>slips, tissues, etc., have been refilmed to<br>ensure the best possible image/<br>Les pages totalement ou partiellement<br>obscurcies par un feuillet d'errata, une pelure,<br>etc., ont été filmées à nouveau de façon à<br>obtenir la meilleure image possible. |
- Additional comments:/ [Printed ephemera] 1 sheet (verso blank)  
Commentaires supplémentaires:

This item is filmed at the reduction ratio checked below/  
Ce document est filmé au taux de réduction indiqué ci-dessous.

10X	12X	14X	16X	18X	20X	22X	24X	26X	28X	30X	32X
								✓			

The copy filmed here has been reproduced thanks to the generosity of:

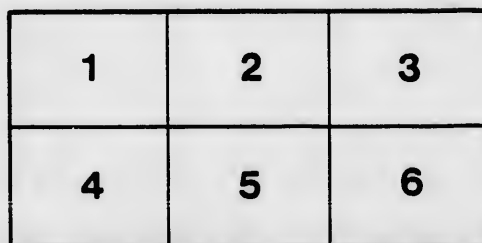
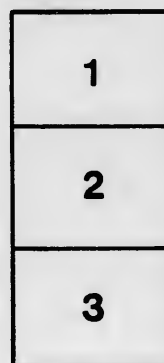
D. B. Weldon Library  
University of Western Ontario  
(Regional History Room)

The images appearing here are the best quality possible considering the condition and legibility of the original copy and in keeping with the filming contract specifications.

Original copies in printed paper covers are filmed beginning with the front cover and ending on the last page with a printed or illustrated impression, or the back cover when appropriate. All other original copies are filmed beginning on the first page with a printed or illustrated impression, and ending on the last page with a printed or illustrated impression.

The last recorded frame on each microfiche shall contain the symbol  $\rightarrow$  (meaning "CONTINUED"), or the symbol  $\nabla$  (meaning "END"), whichever applies.

Maps, plates, charts, etc., may be filmed at different reduction ratios. Those too large to be entirely included in one exposure are filmed beginning in the upper left hand corner, left to right and top to bottom, as many frames as required. The following diagrams illustrate the method:



L'exemplaire filmé fut reproduit grâce à la générosité de:

D. B. Weldon Library  
University of Western Ontario  
(Regional History Room)

Les images suivantes ont été reproduites avec le plus grand soin, compte tenu de la condition et de la netteté de l'exemplaire filmé, et en conformité avec les conditions du contrat de filmage.

Les exemplaires originaux dont la couverture en papier est imprimée sont filmés en commençant par le premier plat et en terminant soit par la dernière page qui comporte une empreinte d'impression ou d'illustration, soit par le second plat, selon le cas. Tous les autres exemplaires originaux sont filmés en commençant par la première page qui comporte une empreinte d'impression ou d'illustration et en terminant par la dernière page qui comporte une telle empreinte.

Un des symboles suivants apparaîtra sur la dernière image de chaque microfiche, selon le cas: le symbole  $\rightarrow$  signifie "A SUIVRE", le symbole  $\nabla$  signifie "FIN".

Les cartes, planches, tableaux, etc., peuvent être filmés à des taux de réduction différents. Lorsque le document est trop grand pour être reproduit en un seul cliché, il est filmé à partir de l'angle supérieur gauche, de gauche à droite, et de haut en bas, en prenant le nombre d'images nécessaire. Les diagrammes suivants illustrent la méthode.

**CITY HALL.-**  
**FOR TWO NIGHTS ONLY.**  
**FIRST TIME IN CANADA.**

NOVEL AND INTERESTING  
**EXHIBITION**  
ON  
**TUESDAY & WEDNESDAY**  
Evenings, Oct. 7th & 8th.

**MR. HENRY,**

HAVING BROUGHT HIS MAMMOTH

**OXY-HYDROGEN**

**MICROSCOPE**

Lately exhibited at the Polytechnic Institution, London, will give TWO GRAND EXHIBITIONS on the above Nights, embracing some of the most rare and beautiful objects in NATURAL HISTORY. This Instrument is the **LARGEST IN THE WORLD**, having power capable of

**MAGNIFYING 1,500,000 TIMES**

And weighs, with Gas Apparatus complete, 1,500 Cwt. An audience of ONE THOUSAND PERSONS can witness the astounding powers of this **MONSTER INSTRUMENT** at one time. Amongst the objects shown will be

**A DROP OF WATER!**

From the **RIVER THAMES**, which will be magnified to cover **TWO HUNDRED FEET**. In this will be seen thousands of living Insects magnified to the size of the Beasts of the Forest. Animacule called

**WATER TIGERS AND DRAGONS**

Will be seen occasionally devouring each other. **MITES**, in Cheese, will be magnified to the size of Rats.

# WATER TIGERS AND DRAGONS

Will be seen occasionally devouring each other. MITES, in Cheese, will be magnified to the size of Rats.

## HUMAN HAIR

Cut from the head of an infant, will be shown of the size of BAMBOO CANES; small LIVING FLIES will be seen as large as an ELEPHANT, and a BEE will be magnified to the size of an OX. The leg of a COMMON HONEY BEE will be shown 24 feet in length; altogether forming one of the most astounding and interesting Exhibitions ever seen in Canada.

### PART I.

# THE DIORAMA

Will be shown, consisting of the most Remarkable Places in the World. Selections will be made from the following Programme:—

*Interior of Castles,  
Ruins of Abbeys,  
Landscapes,*

*Icebergs,  
Avalanches,  
Glaciers,*

*Alpine Passes,  
Volcanoes,  
Water Falls*

**And views of Palestine,**

AMONGST THE VIEWS SHOWN WILL BE THE

## Interior of Westminster Abbey

TINTERN ABBEY, by Moonlight,

HOLYROOD CHAPEL, by Moonlight; NETLEY ABBEY, by Moonlight,

Interior of the Church of the Holy Sepulchre, Jerusalem; Interior of the Church of the Nativity, Bethlehem; Church of the Annunciation,

AND OTHERS TOO NUMEROUS TO MENTION.

THE EXHIBITION WILL CONCLUDE WITH A BRILLIANT DISPLAY OF

# CHINESE FIREWORKS

Showing the most beautiful pieces known in the Pyrotechnic Art, and instantly changing into Wheels, Stars, and other Devices imitating the variously colored Fires, and again changing into the beautiful and luxuriant Fountains of Water in full play, surrounded with Garlands of Flowers of every hue.

ADMISSION, 1s. 3d. A few Reserved Seats, 2s. 6d. Children half price.

DOORS OPEN at HALF-PAST SEVEN, and the EXHIBITION will COMMENCE at A QUARTER-PAST EIGHT o'clock

