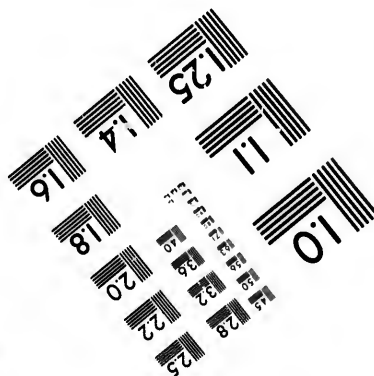
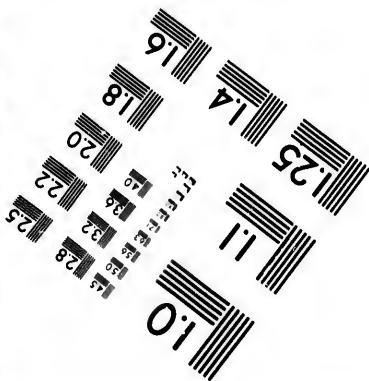
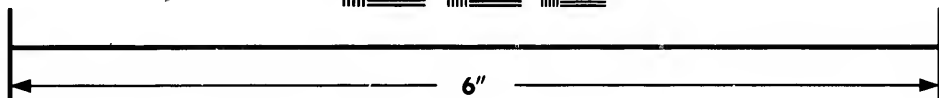
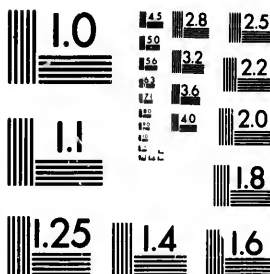


**IMAGE EVALUATION
TEST TARGET (MT-3)**



**Photographic
Sciences
Corporation**

23 WEST MAIN STREET
WEBSTER, N.Y. 14580
(716) 872-4503

15 28 25
19 32 22
4 20
8

**CIHM/ICMH
Microfiche
Series.**

**CIHM/ICMH
Collection de
microfiches.**



Canadian Institute for Historical Microreproductions / Institut canadien de microreproductions historiques

10

© 1985

Technical and Bibliographic Notes/Notes techniques et bibliographiques

The Institute has attempted to obtain the best original copy available for filming. Features of this copy which may be bibliographically unique, which may alter any of the images in the reproduction, or which may significantly change the usual method of filming, are checked below.

L'Institut a microfilmé le meilleur exemplaire qu'il lui a été possible de se procurer. Les détails de cet exemplaire qui sont peut-être uniques du point de vue bibliographique, qui peuvent modifier une image reproduite, ou qui peuvent exiger une modification dans la méthode normale de filmage sont indiqués ci-dessous.

- Coloured covers/
Couverture de couleur
- Covers damaged/
Couverture endommagée
- Covers restored and/or laminated/
Couverture restaurée et/ou pelliculée
- Cover title missing/
Le titre de couverture manque
- Coloured maps/
Cartes géographiques en couleur
- Coloured ink (i.e. other than blue or black)/
Encre de couleur (i.e. autre que bleue ou noire)
- Coloured plates and/or illustrations/
Planches et/ou illustrations en couleur
- Bound with other material/
Relié avec d'autres documents
- Tight binding may cause shadows or distortion
along interior margin/
La reliure serrée peut causer de l'ombre ou de la
distortion le long de la marge intérieure
- Blank leaves added during restoration may
appear within the text. Whenever possible, these
have been omitted from filming/
Il se peut que certaines pages blanches ajoutées
lors d'une restauration apparaissent dans le texte,
mais, lorsque cela était possible, ces pages n'ont
pas été filmées.
- Additional comments:/
Commentaires supplémentaires:

- Coloured pages/
Pages de couleur
- Pages damaged/
Pages endommagées
- Pages restored and/or laminated/
Pages restaurées et/ou pelliculées
- Pages discoloured, stained or foxed/
Pages décolorées, tachetées ou piquées
- Pages detached/
Pages détachées
- Showthrough/
Transparence
- Quality of print varies/
Qualité inégale de l'impression
- Includes supplementary material/
Comprend du matériel supplémentaire
- Only edition available/
Seule édition disponible
- Pages wholly or partially obscured by errata
slips, tissues, etc., have been refilmed to
ensure the best possible image/
Les pages totalement ou partiellement
obscurcies par un feuillet d'errata, une pelure,
etc., ont été filmées à nouveau de façon à
obtenir la meilleure image possible.

This item is filmed at the reduction ratio checked below/
Ce document est filmé au taux de réduction indiqué ci-dessous.

10X	14X	18X	22X	26X	30X
<input type="checkbox"/>	<input type="checkbox"/>	<input type="checkbox"/>	<input checked="" type="checkbox"/>	<input type="checkbox"/>	<input type="checkbox"/>
12X	16X	20X	24X	28X	32X

The copy filmed here has been reproduced thanks to the generosity of:

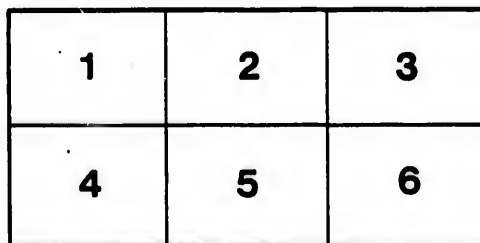
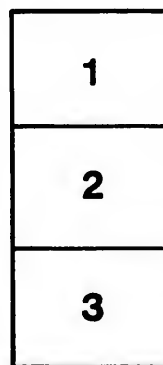
Medical Library
McGill University
Montreal

The images appearing here are the best quality possible considering the condition and legibility of the original copy and in keeping with the filming contract specifications.

Original copies in printed paper covers are filmed beginning with the front cover and ending on the last page with a printed or illustrated impression, or the back cover when appropriate. All other original copies are filmed beginning on the first page with a printed or illustrated impression, and ending on the last page with a printed or illustrated impression.

The last recorded frame on each microfiche shall contain the symbol \rightarrow (meaning "CONTINUED"), or the symbol ∇ (meaning "END"), whichever applies.

Maps, plates, charts, etc., may be filmed at different reduction ratios. Those too large to be entirely included in one exposure are filmed beginning in the upper left hand corner, left to right and top to bottom, as many frames as required. The following diagrams illustrate the method:



L'exemplaire filmé fut reproduit grâce à la générosité de:

Medical Library
McGill University
Montreal

Les images suivantes ont été reproduites avec le plus grand soin, compte tenu de la condition et de la netteté de l'exemplaire filmé, et en conformité avec les conditions du contrat de filmage.

Les exemplaires originaux dont la couverture en papier est imprimée sont filmés en commençant par le premier plat et en terminant soit par la dernière page qui comporte une empreinte d'impression ou d'illustration, soit par le second plat, selon le cas. Tous les autres exemplaires originaux sont filmés en commençant par la première page qui comporte une empreinte d'impression ou d'illustration et en terminant par la dernière page qui comporte une telle empreinte.

Un des symboles suivants apparaîtra sur la dernière image de chaque microfiche, selon le cas: le symbole \rightarrow signifie "A SUIVRE", le symbole ∇ signifie "FIN".

Les cartes, planches, tableaux, etc., peuvent être filmés à des taux de réduction différents. Lorsque le document est trop grand pour être reproduit en un seul cliché, il est filmé à partir de l'angle supérieur gauche, de gauche à droite, et de haut en bas, en prenant le nombre d'images nécessaire. Les diagrammes suivants illustrent la méthode.

*Montreal
General
Hospital*



FAIR 1896



Victoria Skating Rink

OCTOBER . . .
5th to 10th

AFTERNOON AND EVENING



UNDER THE DISTINGUISHED PATRONAGE OF

Their Excellencies
Lord and Lady Aberdeen

THE IMPROVED ANNUITY
or FAMILY INVESTMENT CONTRACT

... as issued by ...

THE TRAVELERS INSURANCE CO.
of Hartford, Conn.

FRANK F. PARKINS, Chief Agent

... Temple Building ...

Telephone 1130.

 Montreal, P.Q.



Guaranteeing the following Results :

In the event of death of the party with whom the Contract is made, the Company guarantees to pay his wife, child or other party named by him, an Annual Income of **\$1,000** for a period of **20** years, and at end of that period the sum of **\$20,000**, so that the total amount paid would be **\$40,000**.



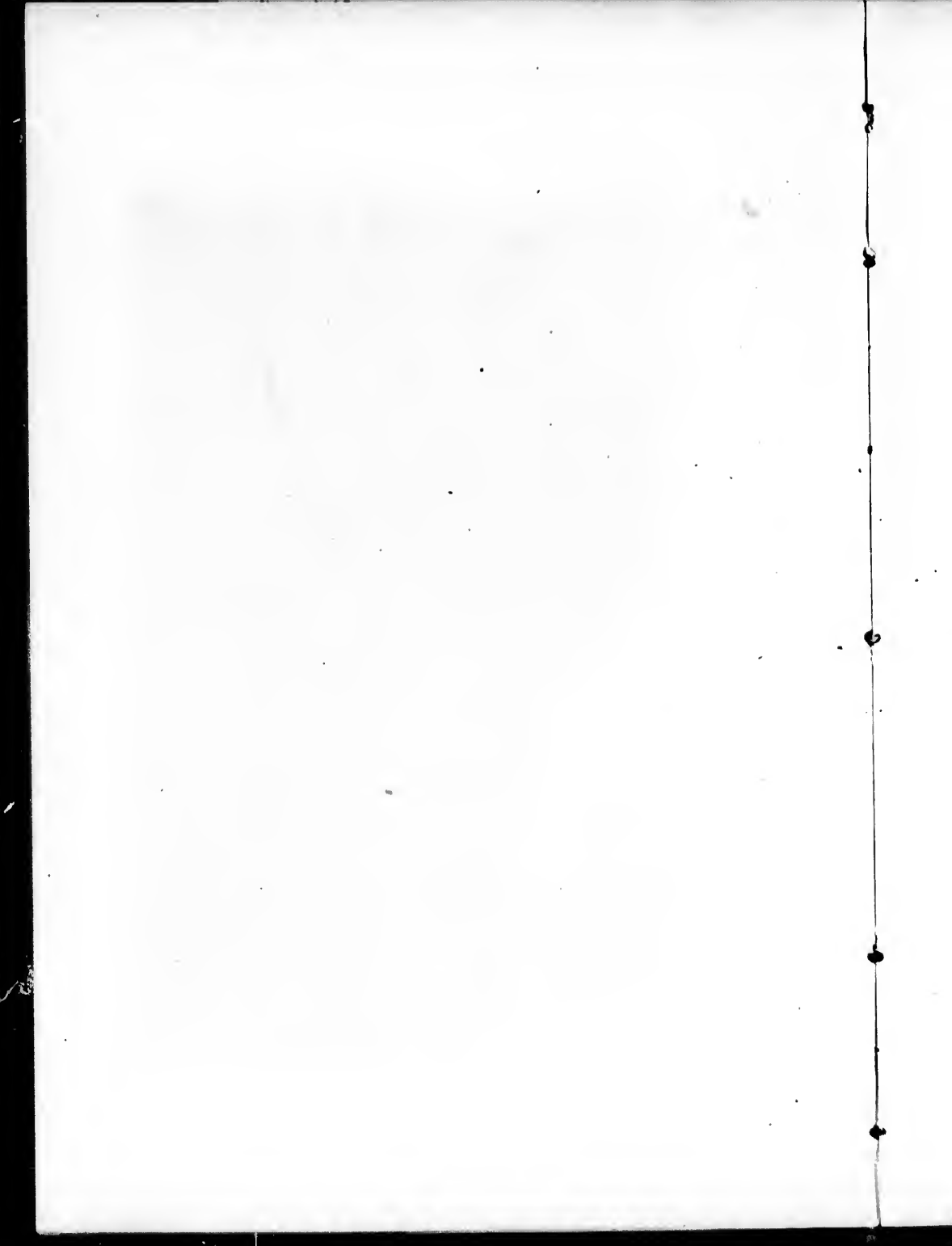
To secure such a Contract at age of 40, it would be necessary to deposit with the Company the sum of \$576.20 annually for balance of life, or \$709.20 for 20 years, \$828.60 for 15 years or \$1,097.00 for 10 years.

After three annual deposits have been made, and deposits should be discontinued, the Company would continue the Contract in force for a certain number of years, or grant a paid-up Contract, or give Cash for surrender of same, all of which is clearly stated on the Contract.

Rates and plans for different ages or amounts furnished on application.



FRONT VIEW OF MONTREAL GENERAL HOSPITAL.





Montreal General Hospital
...Fair 1896...



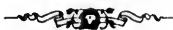
OFFICIAL OPENING

BY

His Honor the Lieut-Governor of Quebec
Sir J. Adolphe Chapleau.



Montreal General Hospital.



From the old records of the Montreal General Hospital it appears that its origin dates from the year 1819. In that year owing to the increase in the population and the great influx of immigrants, the Hotel-Dieu Nunnery was found to be inadequate to the accomodation of the indigent sick, and in consequence four rooms were hired in a house in Chaboillez Square, as a temporary hospital, by a number of philanthropic citizens, conspicuous among whom were Rev. John Bethune, Rev. Henry Esson, and Dr. Blackwood.

After a year's experience of the new institution, it was decided to erect a permanent building with provision for a larger number of patients. Accordingly, on the 25th April, 1820, a meeting of the subscribers to the establishment of a General Hospital in this city was held in the Court House, the Hon. John Richardson in the chair, when several of the most prominent citizens were elected managers of the institution. Isaac W. Clarke, was elected first president. In November 1820, the land upon which the Hospital now stands, then known as Marshall's Nursery was purchased, and the MONTREAL GENERAL HOSPITAL, erected on that site was devoted by deed :

To the reception of patients of all diseases usually admitted into such hospitals in Great Britain, without distinction of religious denomination.

The corner stone of the main body of the present building was laid on the 6th June, 1821, and was ready for the reception of patients the following May. A royal charter was granted by H. M. George IV, in January of 1823, incorporating the Society of the MONTREAL GENERAL HOSPITAL. In the year 1831, the Hon. John Richardson died, and as a record of his services rendered to the Hospital, it was decided to build a wing to be called the "Richardson wing," which was completed and opened for the reception of patients in 1832.

The Hon. John Molson, who had been vice-president since 1823, succeeded to the office of president and held it till his decease in 1835.

Alexander Skakel, L.L.D., who had been the Secretary of the institution from its inception died in 1846.

In 1848, the much respected widow of the late Hon. Chief Justice Reid, expressed her wish to build a wing to correspond with the Richardson wing, as a monument to her venerated husband ; and in 1849 the well known Reid wing was conveyed to the Society.

In 1866, the land opposite the Hospital was purchased and secured to the Institution by the generosity of Mr. Wm. Molson and Mr. J. G. Mackenzie.

In 1868, a separate building for contagious diseases was built in rear of the Richardson wing and detached from it, which did good service for many years until this class of diseases was taken over by the City Council, in 1894.

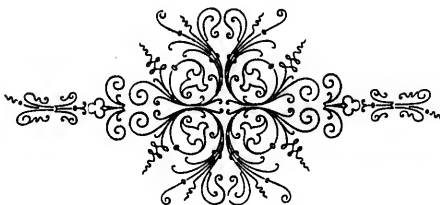
One noticeable feature in the history of this Institution, is, that all great additions made to its buildings have been erected as monuments in memory of deceased friends of the Institution.

Thus in 1871, a building to be called after his name was subscribed for and erected in memory of the late Thomas Morland, to be used as a Children's Hospital.

Coming now to the improvements and additions of later date, the two grand surgical wings known as the "Greenshields" and the "Campbell" wings, were erected and opened for the reception of patients in 1893, through the generosity of Mr. David J. Greenshields and Lord Mount Stephen.

The interior of the old part of the Hospital, which had become antiquated, was entirely renewed and rebuilt on the most modern plans, at a cost of nearly \$100,000 including the very complete Pathological Laboratory, the outer walls alone remaining, relics of the traditions of the noble founders. These renovations were completed early in 1896.

Nor must the Training School for nurses, which has proved under the management of Miss Livingston a most unqualified success, be omitted. It was founded in 1890, and stands second to none in the world for efficiency, discipline and esprit de corps.



... **S**OME ten years since, the need of proper Surgical Instruments at the Hospital having been found a serious obstacle to its usefulness a number of friends and others, to whom the cry of suffering humanity appealed strongly, organised and carried through a most successful Bazaar, from which was realized about \$7,000.00 ; this was applied to the furnishing of such Instruments as then seemed most necessary. This fund is now exhausted and the need of a new fund is seriously felt.

About a year ago, many who were more or less prominent in the former effort were joined by others desirous of again renewing the depleted treasury, and if possible of establishing a permanent Surgical Instrument fund of at least \$10,000.00.

The result is the present Fair ; and the Executive Committee deems it a privilege to place the undertaking before those who are able to give ; if only to the extent of a subscription through the Official Books that have been issued over the signature of the Chairman of the Executive Committee.

The Fair has the official sanction of the Board of management of the Hospital, as more fully shown in the following extract of the minutes of that body.



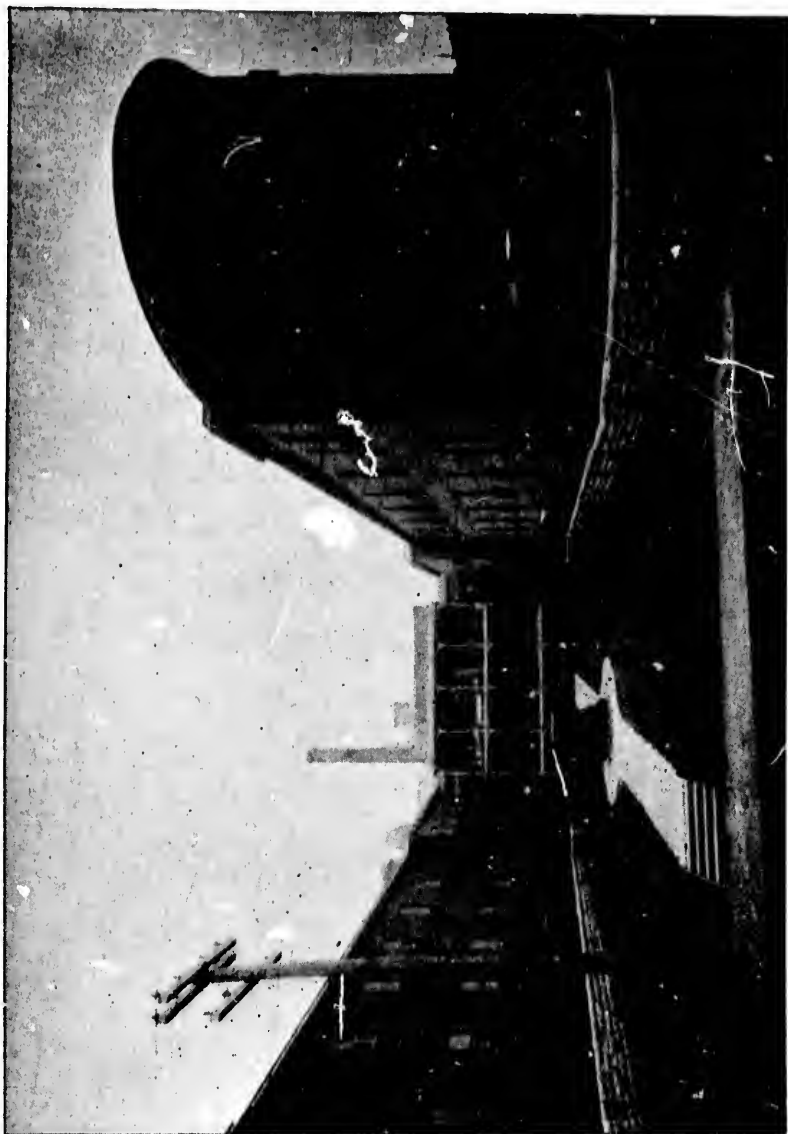
Copy of resolution passed at the meeting of the Committee of Management of the Montreal General Hospital, November 18th, 1895.

J. PATTON, Secretary.

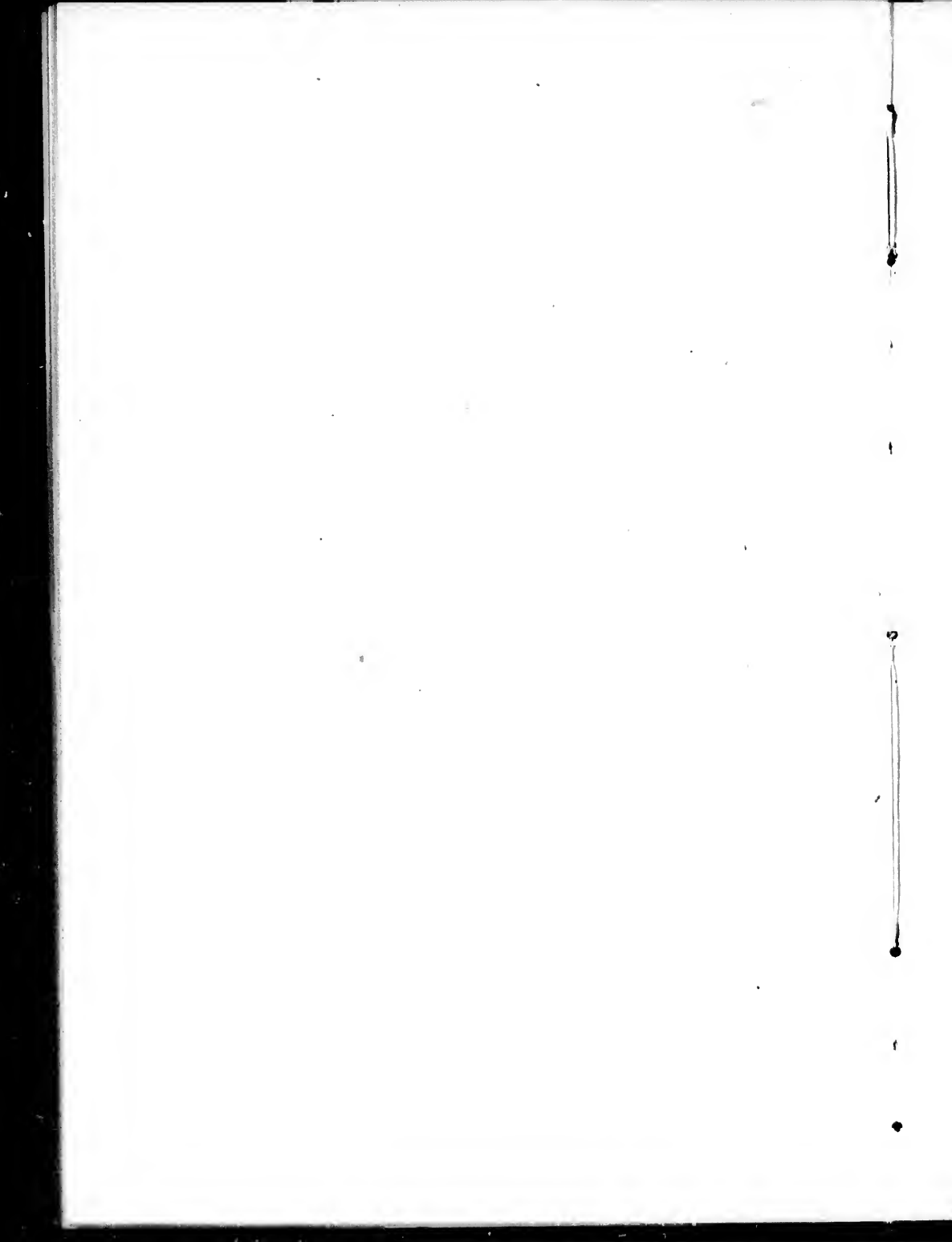
RESOLVED :

That the Committee of Management of the Montreal General Hospital do hereby heartily approve of the proposition from friends of the Hospital to raise the sum of \$10,000 00 for the purchase of instruments and appliances for the Surgical Wards of the Hospital, and do grant the patronage and approval of the Board of Governors to the project upon the following express conditions :

1. That under no circumstances shall raffling, lotteries or other devices that may be termed gambling devices be employed at the proposed Fair or in connection with other means used to attain the object proposed.



REAR VIEW OF SURGICAL WARDS.





LADY PRESIDENTS :

LADY HICKSON

LADY LACOSTE

MRS. F. WOLFERSTAN THOMAS
ACTING CONVENOR.

MRS. GEO. A. DRUMMOND

MADAME THIBAudeau.



EXECUTIVE COMMITTEE:

DAVID WATSON

CHAIRMAN.

H. J. ROSS

SECRETARY.

CHARLES GURD

TREASURER.

A. J. SMAILL

ASSISTANT SECRETARY.

E. H. Copland

J. C. Rose

Geo. R. Lighthall

F. S. Jackson

H. Laporte

D. D. MacTaggart, M.D.

H. A. Springle

R. C. Kirkpatrick, M.D.

R. A. Kerr

Frank J. Hart

Dan. Gilmour

Walter Grose

Major Freeman

W. B. Howell, M.D.

W. H. Benyon

J. T. Hagar

Geo. Sumner

W. McNally

F. C. Henshaw

Jas. McGoun

Frank F. Parkins

T. A. McLean

R. H. Barron

Robt. Weldon

Jas. T. McCall

Anson McKim

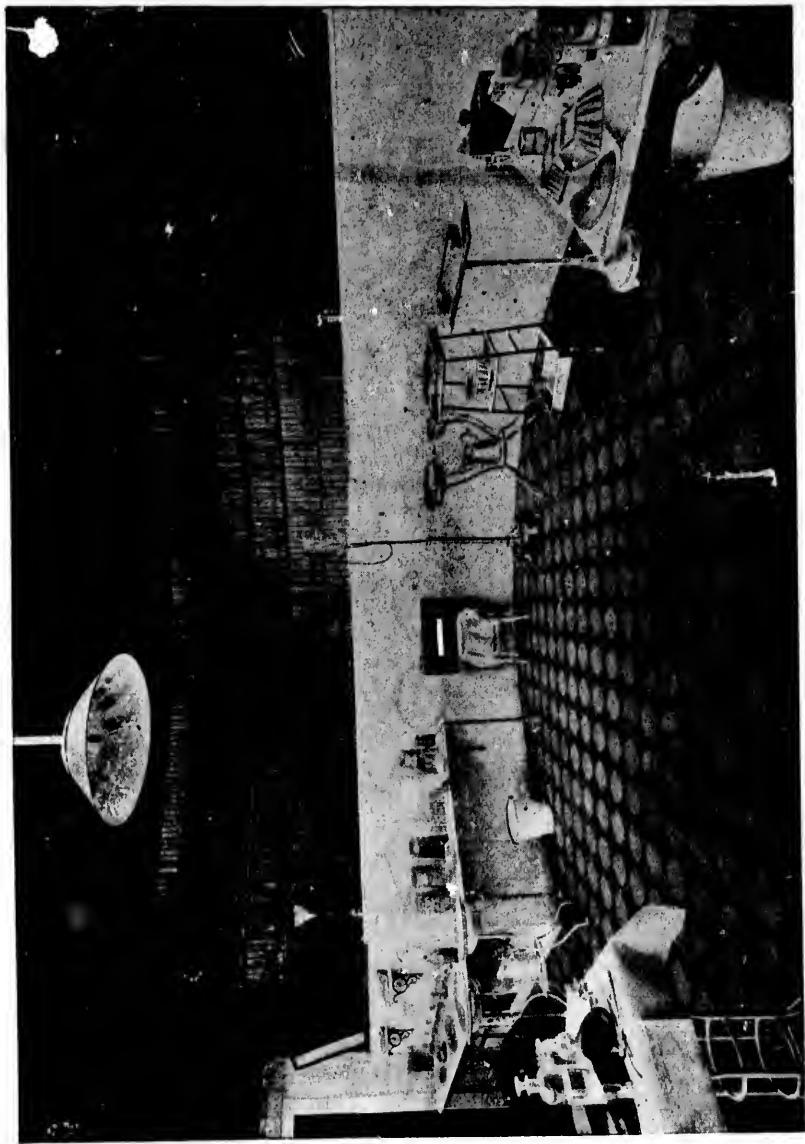


FLOOR COMMITTEE:

Geo. R. Lighthall

H. J. Ross

E. H. Copland



OPERATING ROOM.

J. & T. BELL'S

F
I
N
E

F
O
O
T
W
E
A
R



BELL'S



BELL'S



SOLD BY LEADING RETAILERS.

... LIST OF BOOTHS ...

AND LADIES IN CHARGE



1.	Parcels and Checking	-	-	-	MISS DAVID
2.	Tea and Coffee	-	-	-	MRS. MACKAY
3.	Private Tea Table	-	-	-	do
4.	C. E.—Curios	-	-	-	MISS PHILBIN
5.	10c. and 25c.	-	-	-	MRS. GROSE
6.	Candy	-	-	-	MRS. H. B. AMES
7.	Fancy No. 1 (Methodist)	-	-	-	MRS. C. MORTON
8.	Fruits	-	-	-	MRS. BOUD
9.	Toys	-	-	-	MRS. WAUGH
10.	Home Made Provisions	-	-	-	MISS STIKEMAN
11.	Bags	-	-	-	MRS. CHAS. GURD
12.	Dolls	-	-	-	MISS SYMMERS
13.	Fancy No. 2 (Medical)	-	-	-	MRS. MACCALLUM
14.	Art	-	-	-	MRS. ALEX. MORRIS
15.	Chinese	-	-	-	QUONG WAH LONG & Co.
16.	Johnson Fluid Beef	-	-	-	-
17.	Books and Stationary	-	-	-	MRS. KELLY
18.	China, Glass and Hardware	-	-	-	MRS. PATTERSON
19.	Ice Cream	-	-	-	MRS. MILES
20.	Refreshments	-	-	-	MISS ROGERS
21.	Flowers No. 1	-	-	-	MRS. BELLINGHAM
22.	Lamp Shades	-	-	-	MRS. G. H. LABBE
23.	Sofa Cushions	-	-	-	MRS. EWING
24.	Fortune Telling	-	-	-	MISS RUBENSTEIN
25.	Cigars	-	-	-	MRS. DESOLA
26.	Temperance	-	-	-	MRS. STRONG
27.	Special Donations	-	-	-	-
28.	Flowers No. 2	-	-	-	MRS. DAVIDSON
29.	Punch and Judy	-	-	-	FRANK LYMAN
30.	Galatea Illusion	-	-	-	F. H. NORMAN
31.	Vitasopic Exhibition	-	-	-	-

Special Attractions



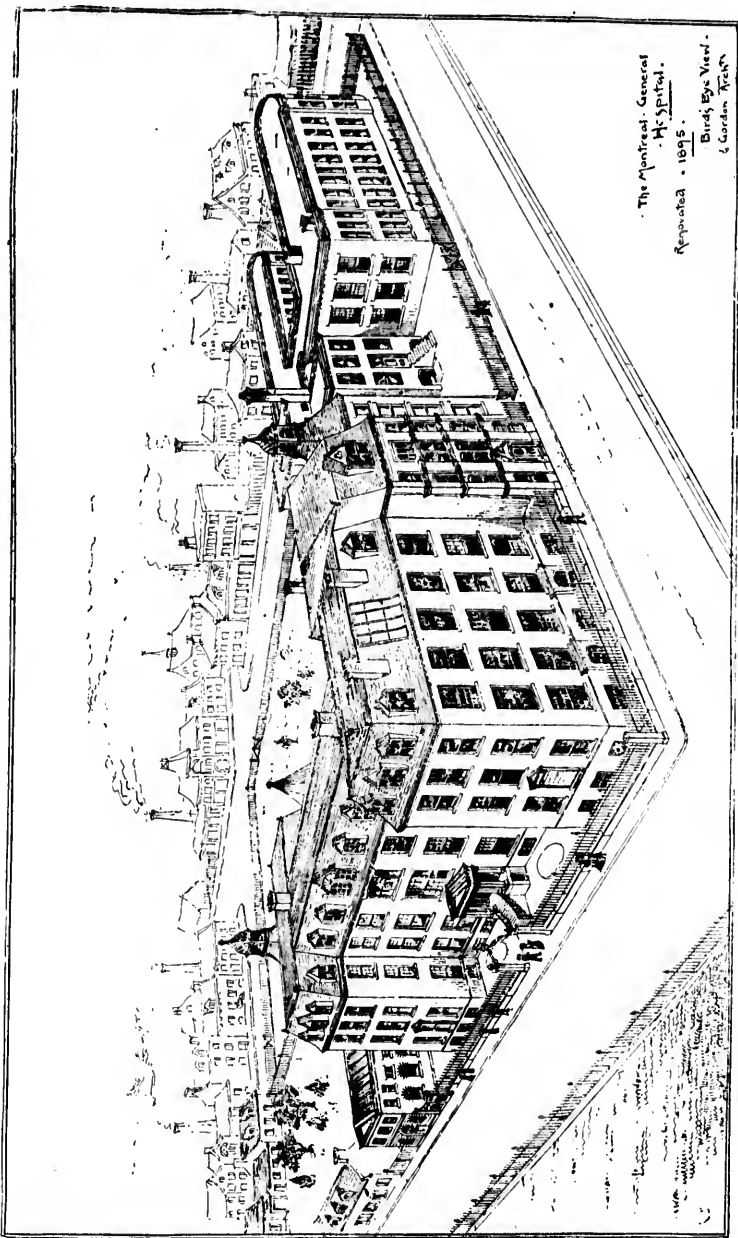
Every Afternoon and Evening ---

- Galatea Illusion PROF. F. H. NORMAN
Punch and Judy FRANK LYMAN
Vitascope Exhibition

Musical



- MONDAY**
 . . . 6th Fusiliers Band
- TUESDAY**
 . . . Handel & Hayden Society
 . . . Montreal Orchestral Association
- WEDNESDAY**
 . . . Prince of Wales Rifles Band
- THURSDAY.**
 . . . Royal Scots Band
 . . . Y. M. C. Assoc. Orchestra
- FRIDAY**
 . . . Victoria Rifles Band
- SATURDAY**
 . . . 65th Mount Royal Rifles Band



The Montreal General
Hospital.
Re-opened in 1895.
Bird's Eye View.
Gordon & Co.

BIRD'S EYE VIEW OF MONTREAL GENERAL HOSPITAL.

Ram Lal's
PURE INDIAN TEA.

The Choicest
English Breakfast Tea

THE WORLD PRODUCES.

GUARANTEED
ABSOLUTELY PURE
AS MANUFACTURED ON THE
GARDENS IN INDIA.

Goes **ONE-THIRD** farther
than **OTHER TEAS**
In Sealed Lead Packages only

Most Liberal Policy ever issued by a
Substantial and Successful
Company.

Combination Accident Policy

... of The Travelers

Granting for FATAL or DISABLING ACCIDENTS in general
as follows :

\$5,000 . . .

for Death, Loss of Sight of Both Eyes, Loss of Both Feet
or Both Hands, Loss of Hand and Foot.

\$2,500 . . .

for Loss of Right Hand, Loss of Either Leg at Knee,
Permanent Disability.

\$1,000 . . .

for Loss of Left Hand or Either Foot.

\$650

for Loss of Sight of One Eye.

\$25

Weekly Indemnity (up to 52 Weeks).

*If such Injuries are Sustained while Riding as a Passenger in
any Steam, Cable, or Electric Passenger Conveyance,
DOUBLE THE SUM in each case.*

Costs \$25 a Year for Professional, Business and Traveling Men.
Other sums at proportionate rates. Covers Injuries
by Burglars and Robbers.

FRANK F. PARKINS, Chief Agent,
Temple Building, MONTREAL.



CHASE & SANBORN'S Seal Brand Coffee
is the "finest grown." For perfect results
follow directions in each can.

Packed ground or unground in cans only.

CHASE & SANBORN,
BOSTON, MONTREAL, CHICAGO.

